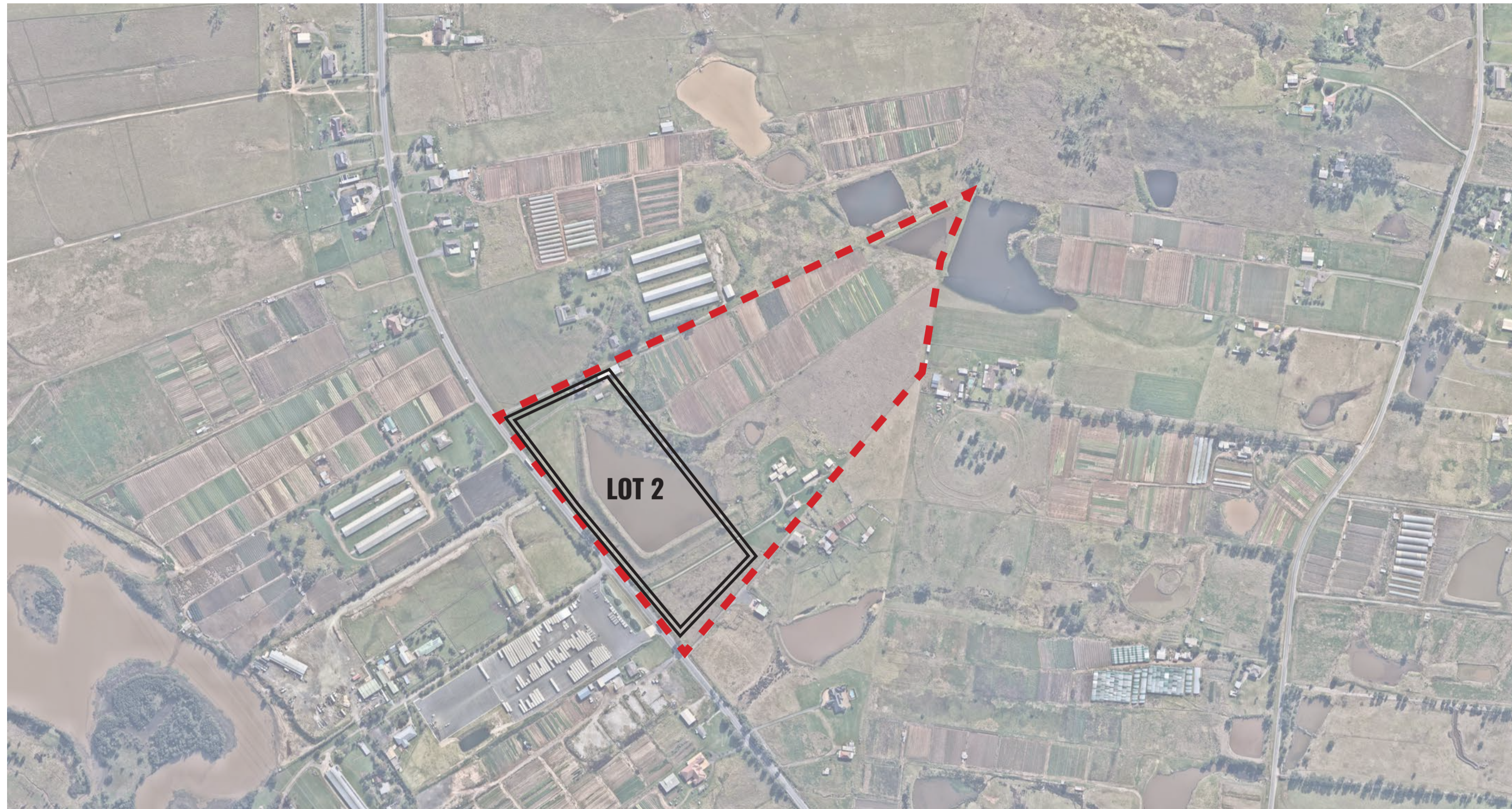


884-928 Mamre Road LOT 2, Kemp's Creek, NSW 2178

Landscape Documentation for State Significant Development Application

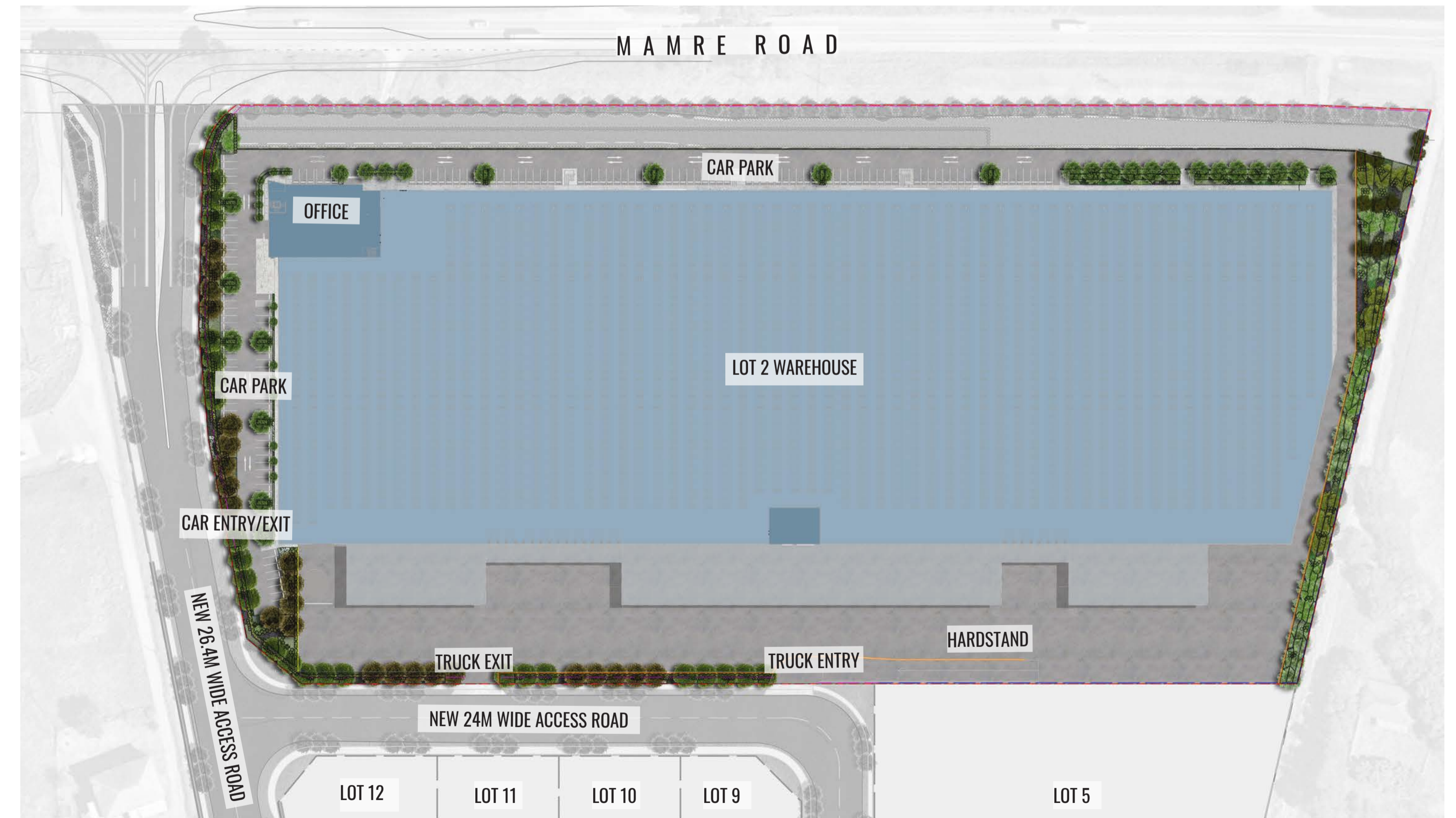


- - - - SITE BOUNDARY
 LOT BOUNDARY

IMAGE TAKEN FROM NEARMAP 2021

Drawing Register

Dwg No.	Drawing Name
LDA-00	Landscape Cover Sheet
LDA-01	Overall Landscape Plan
LDA-02	Landscape Detail Plan 1
LDA-03	Landscape Detail Plan 2
LDA-04	Landscape Detail Plan 3
LDA-05	Landscape Detail Plan 4
LDA-06	Landscape Detail Plan 5
LDA-07	Landscape Section AA & BB
LDA-08	Landscape Section CC & DD
LDA-09	Specification & Details
LDA-10	Planting Schedule & Imagery



SITE PLAN


Drawing Title:
Landscape Cover Sheet
 DWG No:

LDA-00

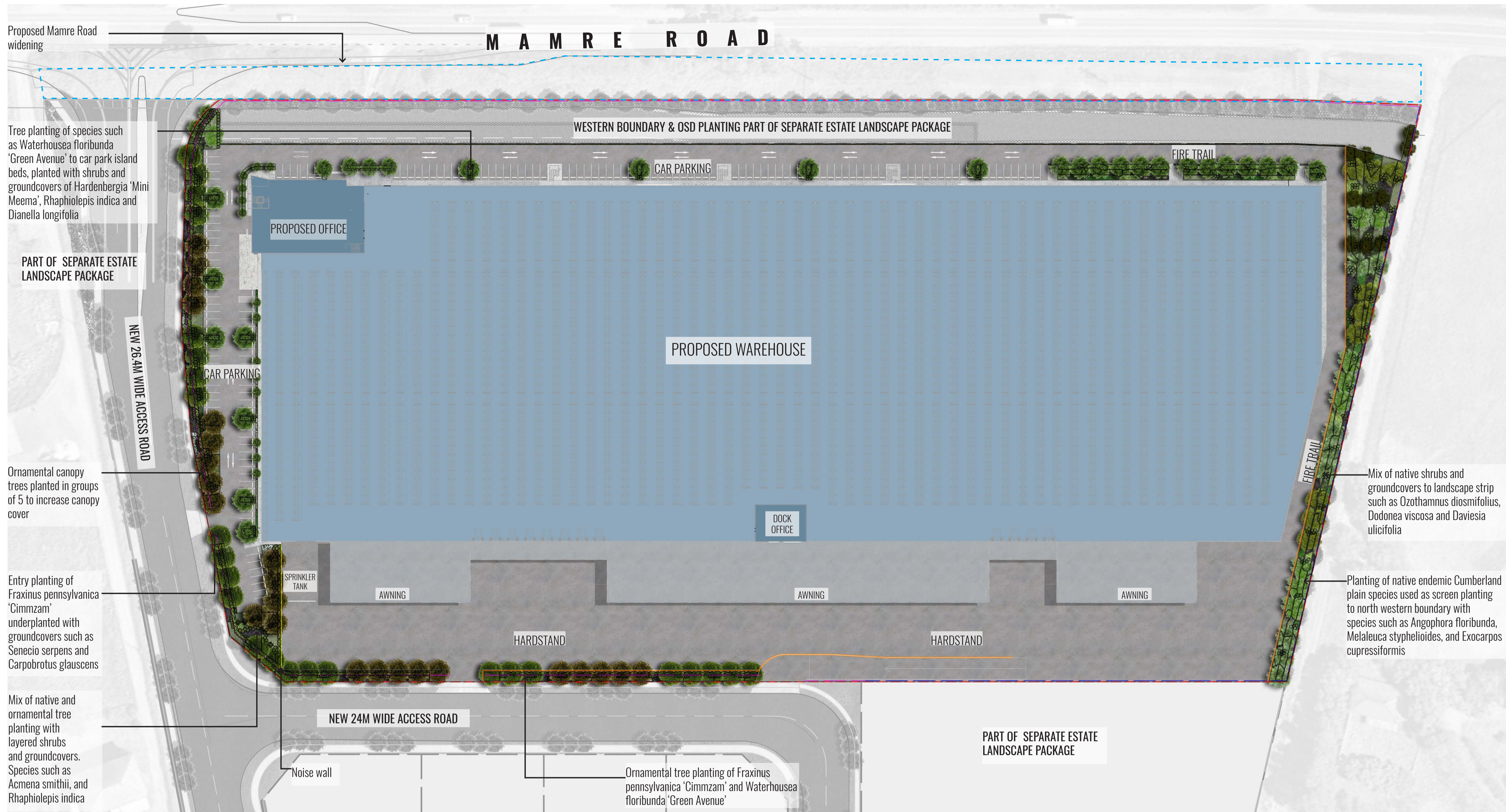
GEOSCAPES
 LANDSCAPE ARCHITECTS
 Suite 215, 284 Victoria Ave, Chatswood NSW 2067 Ph. (02) 9411 1485
 www.geoscapes.com.au
 ABN 84 620 205 781 ACN 620 205 781

Architect:


Client:

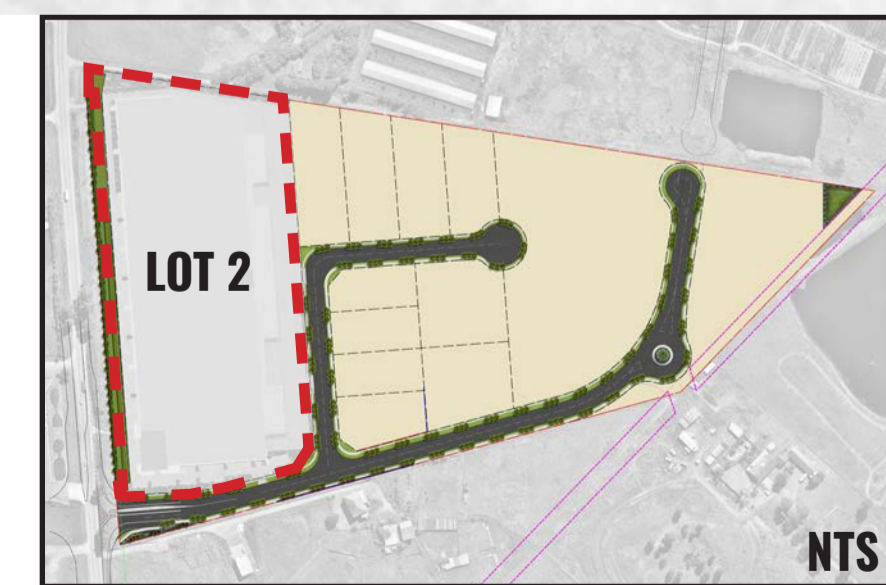

Scale: N/A Date: 01.09.2021 Job Number: 200826 North: 
 Project: 884-928 Mamre Road
 Kemp's Creek, NSW 2178

Revision		FOR STATE SIGNIFICANT DEVELOPMENT APPLICATION			
Rev	Date	Description	Drawn	Checked	
D	16.07.21	FOR SSD	KC	BG	
E	19.07.21	FOR SSD	KC	BG	
F	24.08.21	FOR SSD	KC	BG	
G	01.09.21	FOR SSD	KC	BG	



Landscape Calculations

Landscape area: 4249.65 m2 which is 6.42% of overall site area (66 109m2)
 Total Proposed Trees: 129
 Total Canopy Cover: 5178.41m2 which is 7.83% of overall site area (66 109m2)



ESTATE PLAN

Drawing Title:
Overall Landscape Plan
 DWG No:
LDA-01

GEOSCAPES
 LANDSCAPE ARCHITECTS

Suite 215, 284 Victoria Ave, Chatswood NSW 2067 Ph. (02) 9411 1485
 www.geoscapes.com.au
 ABN 84 620 205 781 ACN 620 205 781

Architect:

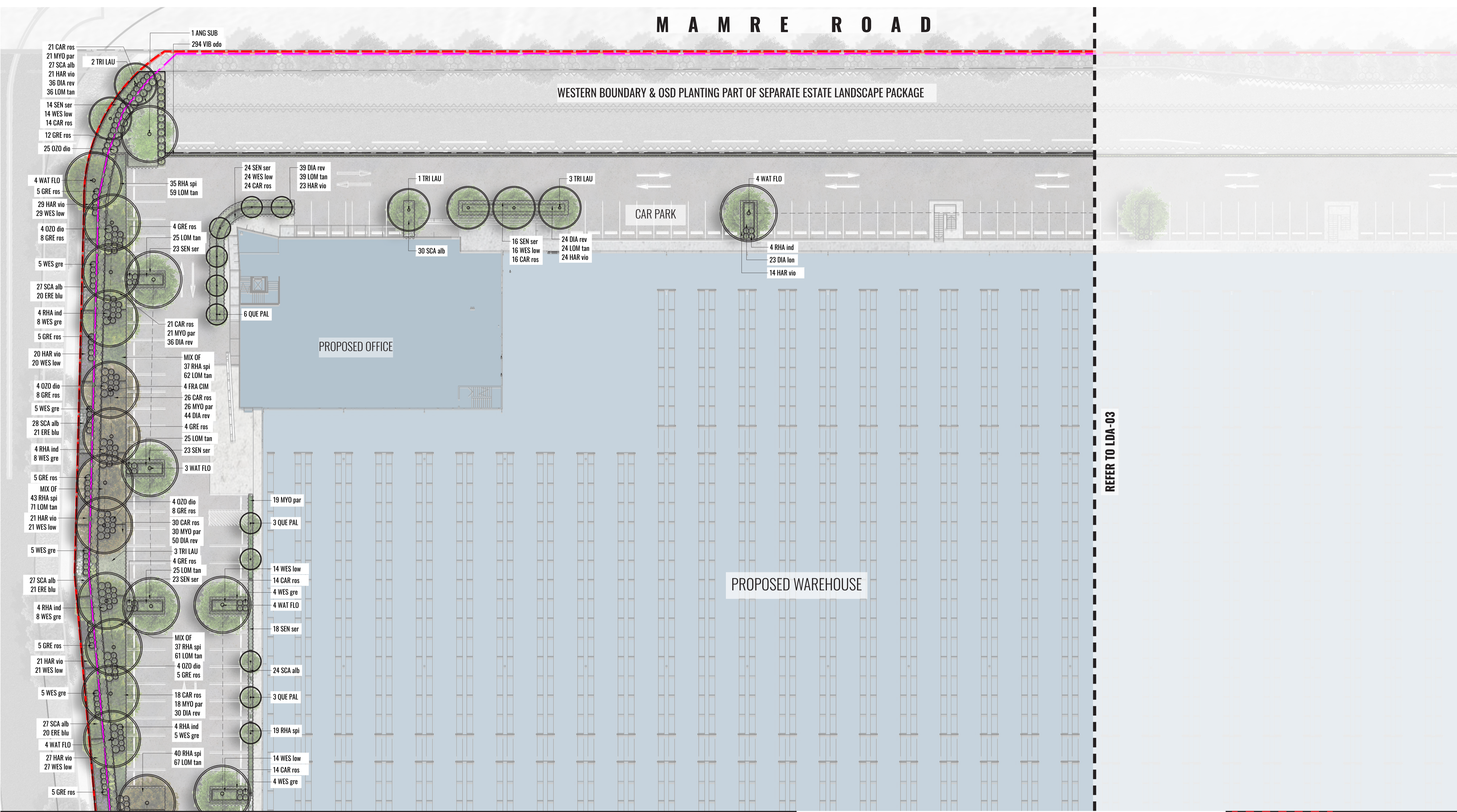
Client:

Scale: 1:600 @ A1
 Date: 01.09.2021
 Job Number: 200826
 Project: 884-928 Mamre Road
 Kempers Creek, NSW 2178

Revision		FOR STATE SIGNIFICANT DEVELOPMENT APPLICATION			
Rev	Date	Description	Drawn	Checked	
D	16.07.21	FOR SSD	KC	BG	
E	19.07.21	FOR SSD	KC	BG	
F	24.08.21	FOR SSD	KC	BG	
G	01.09.21	FOR SSD	KC	BG	

MAMRE ROAD

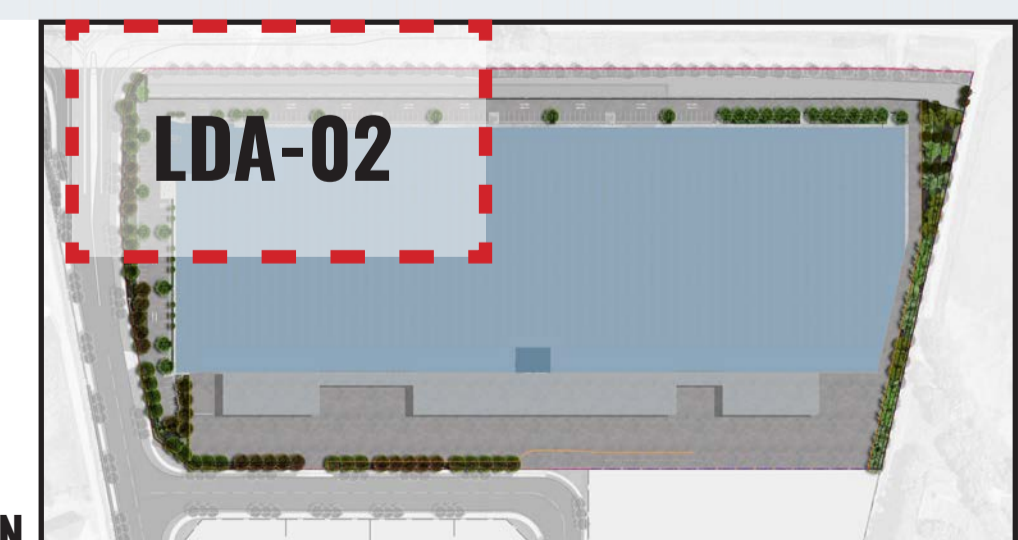
WESTERN BOUNDARY & OSD PLANTING PART OF SEPARATE ESTATE LANDSCAPE PACKAGE



REFER TO LDA-03

LEGEND

ESTATE SITE BOUNDARY	ACCENT/FEATURE PLANTING	PROPOSED TREE PLANTING	PROPOSED HEDGE PLANTING	PROPOSED SHRUB PLANTING	2.1m HIGH CHAINWIRE FENCE
LOT BOUNDARY	PROPOSED GROUNDCOVER PLANTING	+RL PROPOSED LEVELS	2.1m HIGH PALISADE FENCE	RETAINING WALL	NOISE WALL



Drawing Title:
Landscape Detail Plan 1
DWG No:

LDA-02

GEOSCAPES
LANDSCAPE ARCHITECTS
Suite 215, 284 Victoria Ave, Chatswood NSW 2067 Ph. (02) 9411 1485
www.geoscapes.com.au
ABN 84 620 205 781 ACN 620 205 781

Architect:

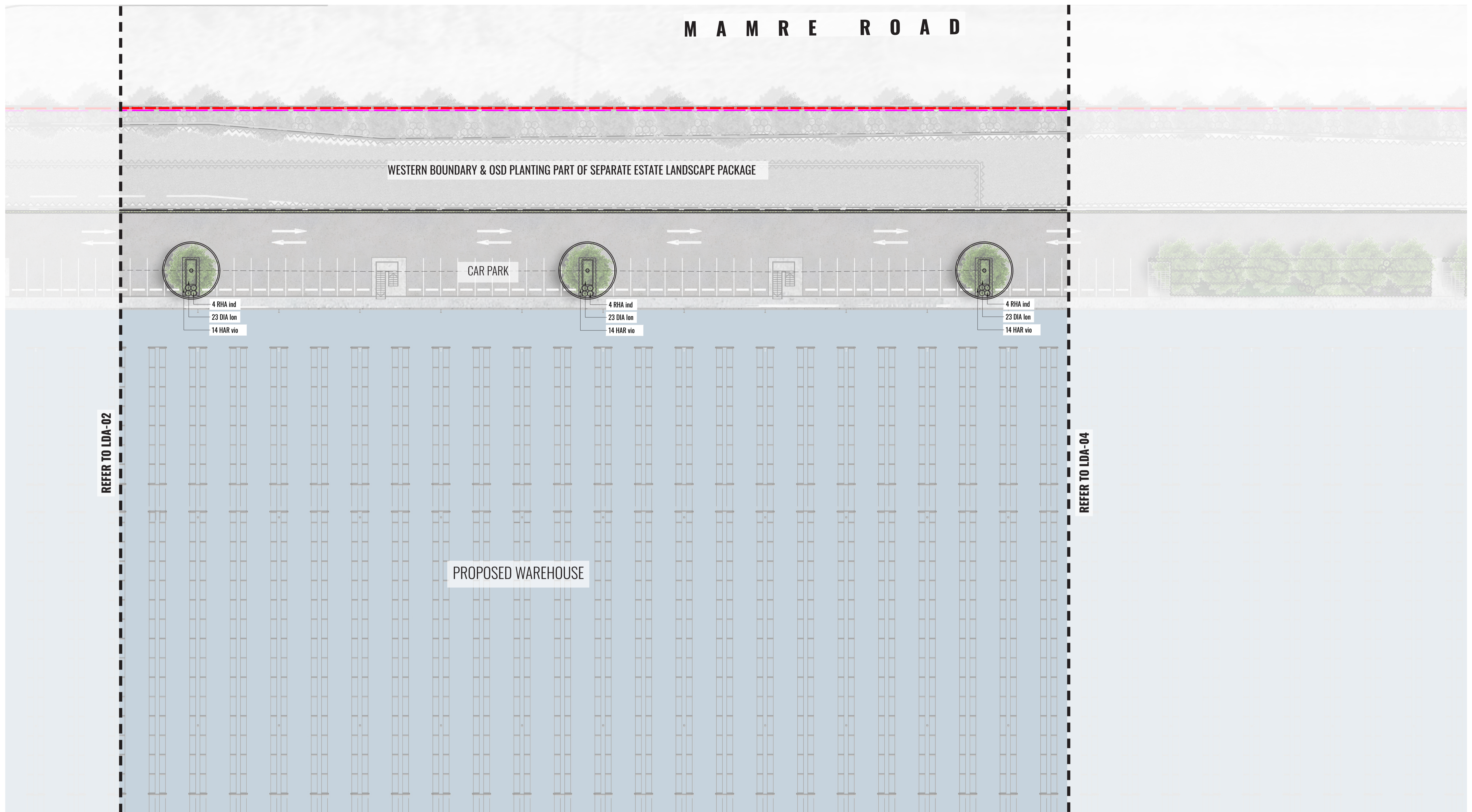
Client:

Scale: 1:250 @ A1
Date: 01.09.2021
Job Number: 200826
Project: 884-928 Mamre Road
Kemps Creek, NSW 2178

North:

FOR STATE SIGNIFICANT DEVELOPMENT APPLICATION					
Revision	Date	Description	Drawn	Checked	
D	16.07.21	FOR SSD	KC	BG	
E	19.07.21	FOR SSD	KC	BG	
F	24.08.21	FOR SSD	KC	BG	
G	01.09.21	FOR SSD	KC	BG	

MAMRE ROAD



WESTERN BOUNDARY & OSD PLANTING PART OF SEPARATE ESTATE LANDSCAPE PACKAGE

CAR PARK

PROPOSED WAREHOUSE

4 RHA ind
23 DIA lon
14 HAR vio

4 RHA ind
23 DIA lon
14 HAR vio

4 RHA ind
23 DIA lon
14 HAR vio

REFER TO LDA-02

REFER TO LDA-04

LEGEND					
	ESTATE SITE BOUNDARY		ACCENT/FEATURE PLANTING		PROPOSED TREE PLANTING
	LOT BOUNDARY		PROPOSED GROUNDCOVER PLANTING		PROPOSED SHRUB PLANTING
	+RL 36.00		2.1m HIGH PALISADE FENCE		RETAINING WALL
	2.1m HIGH CHAINWIRE FENCE		NOISE WALL		



KEY PLAN

Drawing Title:
Landscape Detail Plan 2
DWG No:

LDA-03

GEOSCAPES
LANDSCAPE ARCHITECTS
Suite 215, 284 Victoria Ave, Chatswood NSW 2067 Ph. (02) 9411 1485
www.geoscapes.com.au
ABN 84 620 205 781 ACN 620 205 781

Architect:

Client:
ALTIS
PROPERTY PARTNERS

Scale: 1:250 @ A1
Date: 01.09.2021
Job Number: 200826
Project: 884-928 Mamre Road
Kemps Creek, NSW 2178

FOR STATE SIGNIFICANT DEVELOPMENT APPLICATION					
Revision	Date	Description	Drawn	Checked	
D	16.07.21	FOR SSD	KC	BG	
E	19.07.21	FOR SSD	KC	BG	
F	24.08.21	FOR SSD	KC	BG	
G	01.09.21	FOR SSD	KC	BG	

MAMRE ROAD

WESTERN BOUNDARY & OSD PLANTING PART OF SEPARATE ESTATE LANDSCAPE PACKAGE

REFER TO LDA-03

PROPOSED WAREHOUSE

MIRVAC SITE

LEGEND	
	ESTATE SITE BOUNDARY
	ACCENT/FEATURE PLANTING
	PROPOSED TREE PLANTING
	PROPOSED HEDGE PLANTING
	PROPOSED SHRUB PLANTING
	2.1m HIGH CHAINWIRE FENCE
	LOT BOUNDARY
	PROPOSED GROUNDCOVER PLANTING
	+RL PROPOSED LEVELS
	2.1m HIGH PALISADE FENCE
	RETAINING WALL
	NOISE WALL

KEY PLAN



Drawing Title:
Landscape Detail Plan 3
DWG No:

LDA-04

GEOSCAPES
LANDSCAPE ARCHITECTS
Suite 215, 284 Victoria Ave, Chatswood NSW 2067 Ph. (02) 9411 1485
www.geoscapes.com.au
ABN 84 620 205 781 ACN 620 205 781

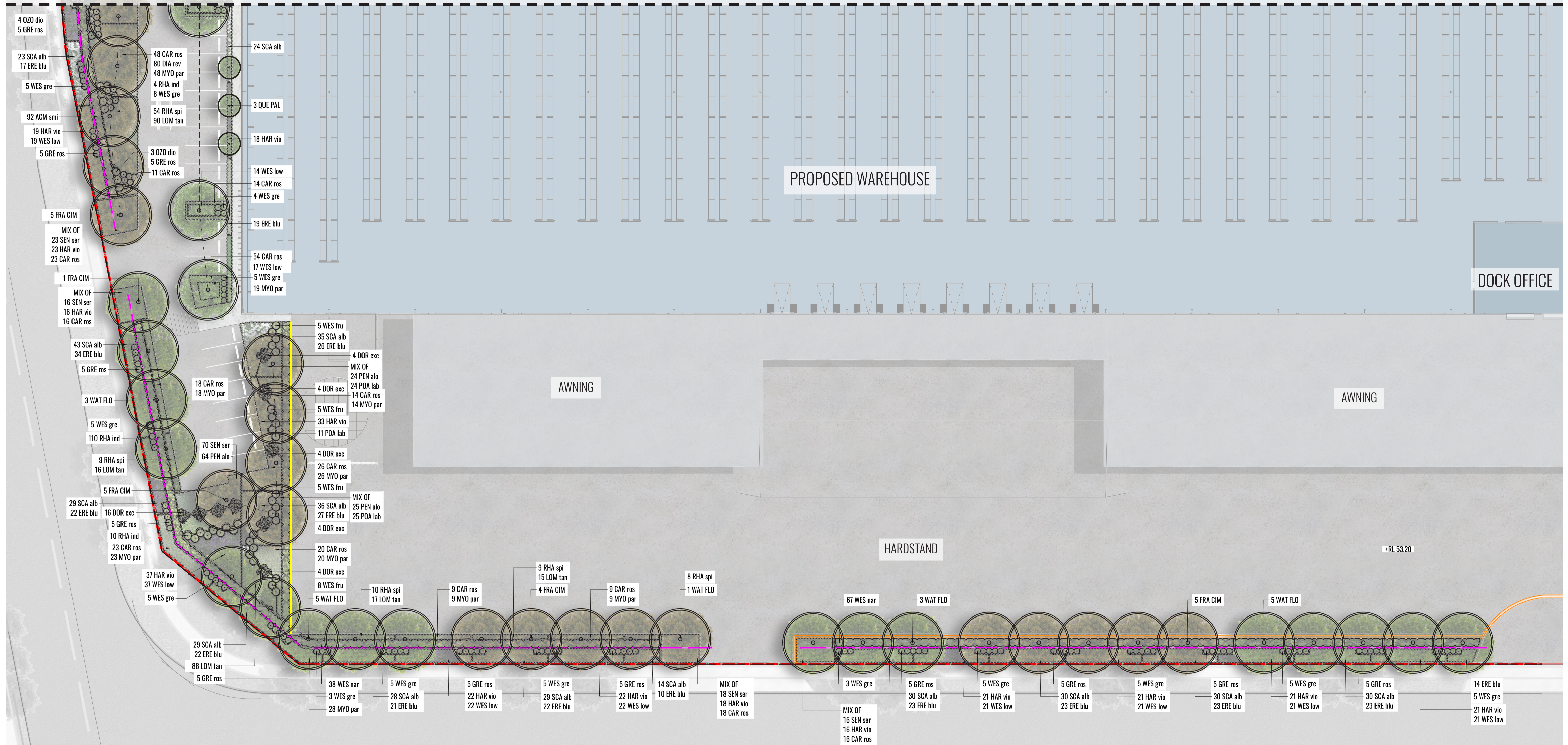
Architect:

Client:
ALTIS
PROPERTY PARTNERS

Scale: 1:250 @A1
Date: 01.09.2021
Job Number: 200826
North:
Project: 884-928 Mamre Road
Kemps Creek, NSW 2178

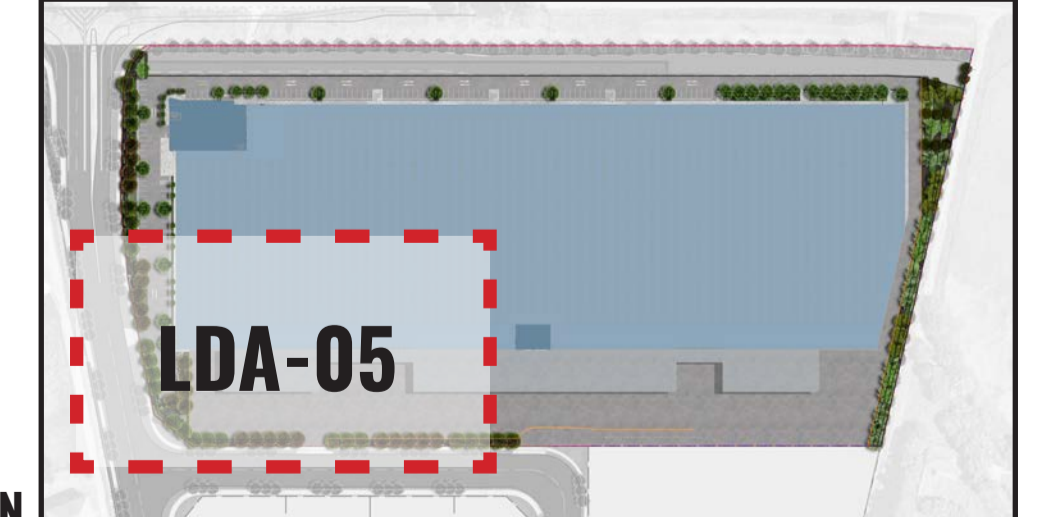
Revision		FOR STATE SIGNIFICANT DEVELOPMENT APPLICATION		
Rev	Date	Description	Drawn	Checked
D	16.07.21	FOR SSD	KC	BG
E	19.07.21	FOR SSD	KC	BG
F	24.08.21	FOR SSD	KC	BG
G	01.09.21	FOR SSD	KC	BG

REFER TO LDA-02



LEGEND

- ESTATE SITE BOUNDARY
- LOT BOUNDARY
- ACCENT/FEATURE PLANTING
- PROPOSED GROUNDCOVER PLANTING
- PROPOSED TREE PLANTING
- +RL 36.00
- PROPOSED HEDGE PLANTING
- PROPOSED SHRUB PLANTING
- RETAINING WALL
- 2.1m HIGH CHAINWIRE FENCE
- NOISE WALL



Drawing Title:
Landscape Detail Plan 4
 DWG No:
LDA-05

GEOSCAPES
 LANDSCAPE ARCHITECTS
 Suite 215, 284 Victoria Ave, Chatswood NSW 2067 Ph. (02) 9411 1485
 www.geoscapes.com.au
 ABN 84 620 205 781 ACN 620 205 781

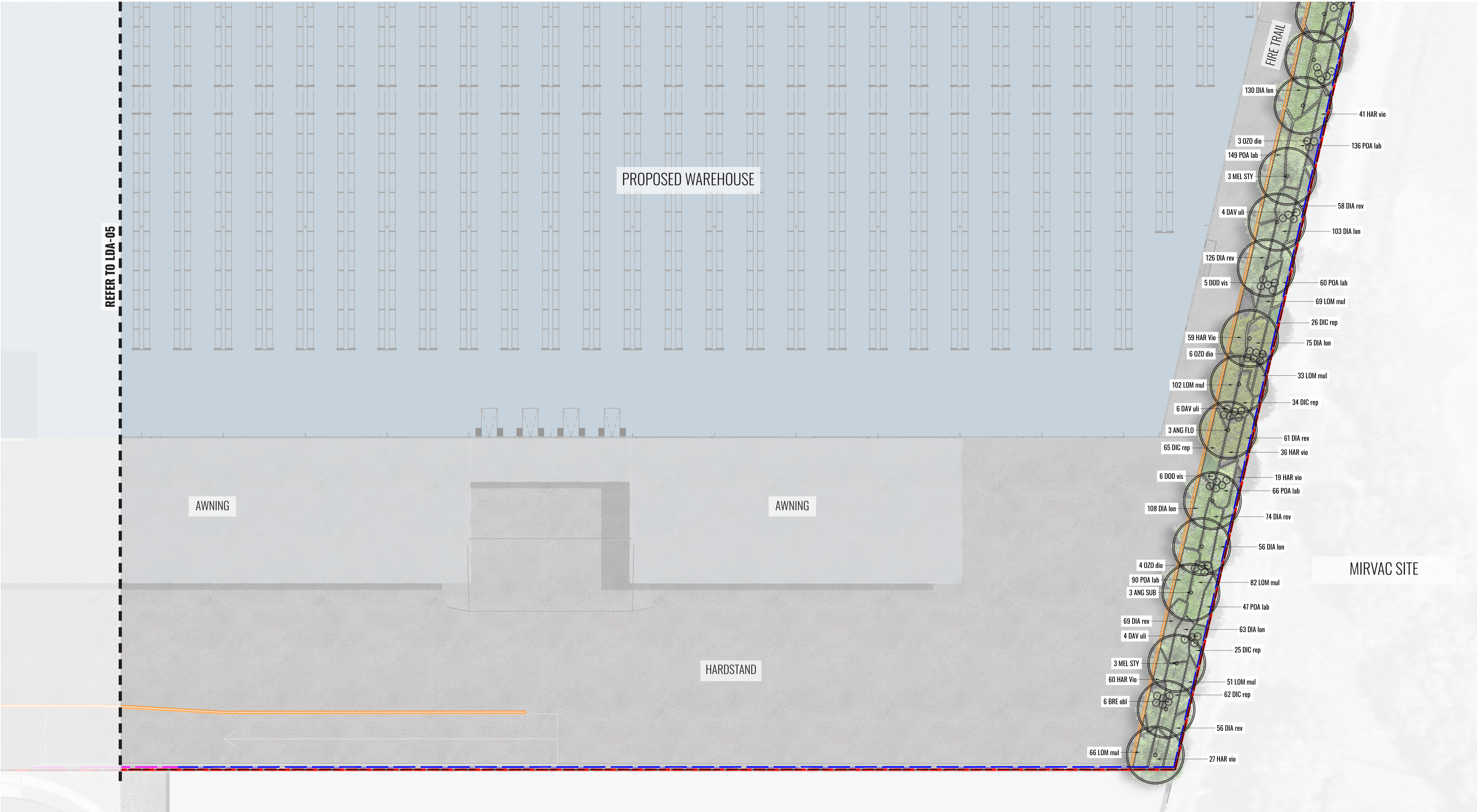
Architect:

Client:

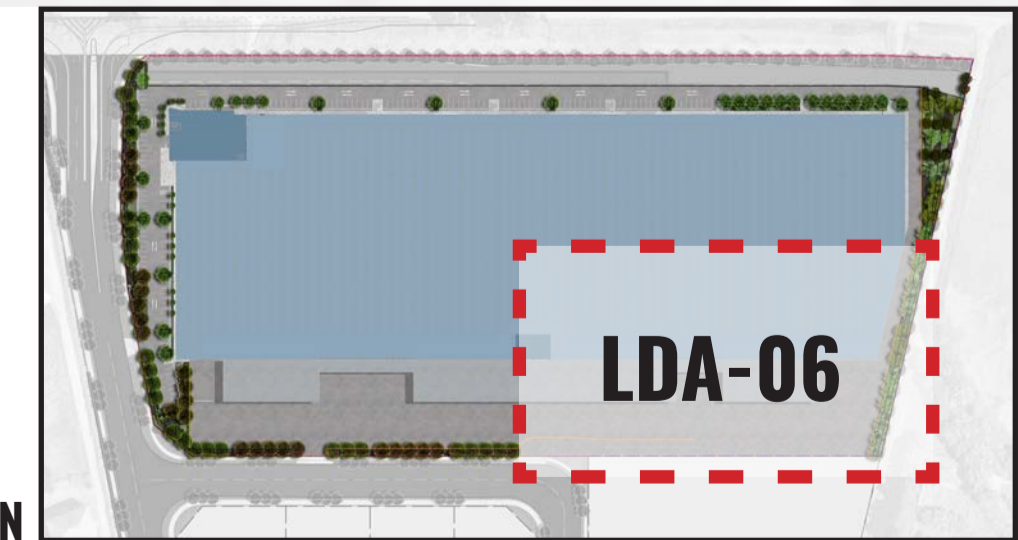
Scale: 1:250 @ A1
 Date: 01.09.2021
 Job Number: 200826
 Project: 884-928 Mamre Road
 Kemps Creek, NSW 2178

FOR STATE SIGNIFICANT DEVELOPMENT APPLICATION

Revision	Date	Description	Drawn	Checked
D	16.07.21	FOR SSD	KC	BG
E	19.07.21	FOR SSD	KC	BG
F	24.08.21	FOR SSD	KC	BG
G	01.09.21	FOR SSD	KC	BG



LEGEND					
	ESTATE SITE BOUNDARY		ACCENT/FEATURE PLANTING		PROPOSED TREE PLANTING
	LOT BOUNDARY		PROPOSED GROUNDCOVER PLANTING		PROPOSED HEDGE PLANTING
	2.1m HIGH CHAINWIRE FENCE		PROPOSED SHRUB PLANTING		RETAINING WALL
	NOISE WALL		PROPOSED LEVELS		2.1m HIGH PALISADE FENCE
			+RL 36.00		



Drawing Title:
Landscape Detail Plan 5
 DWG No:

LDA-06

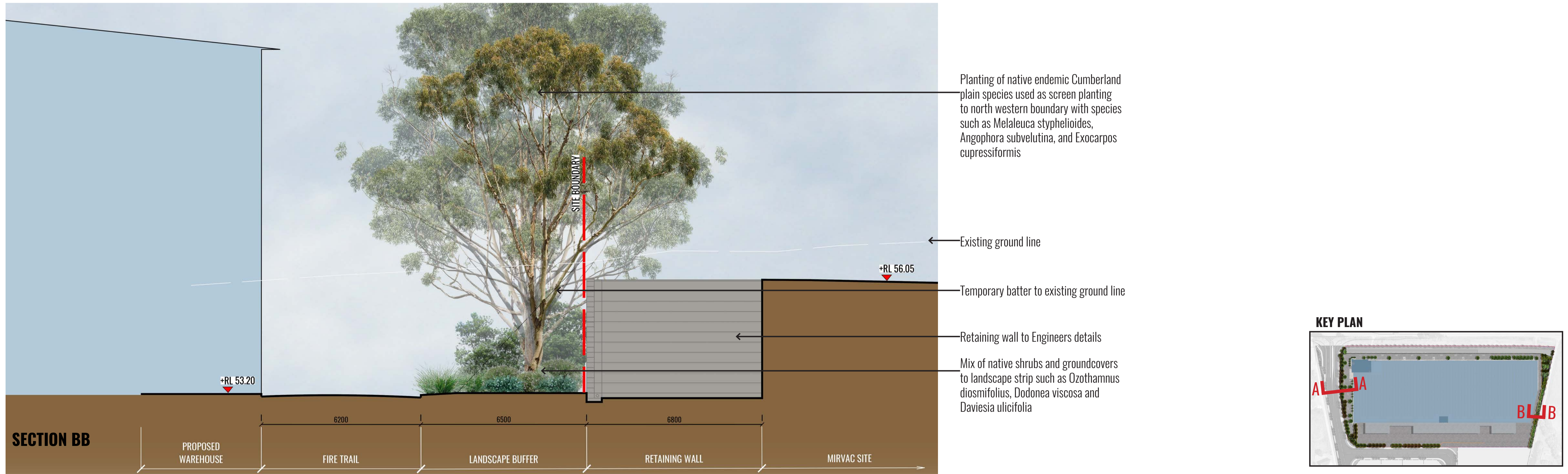
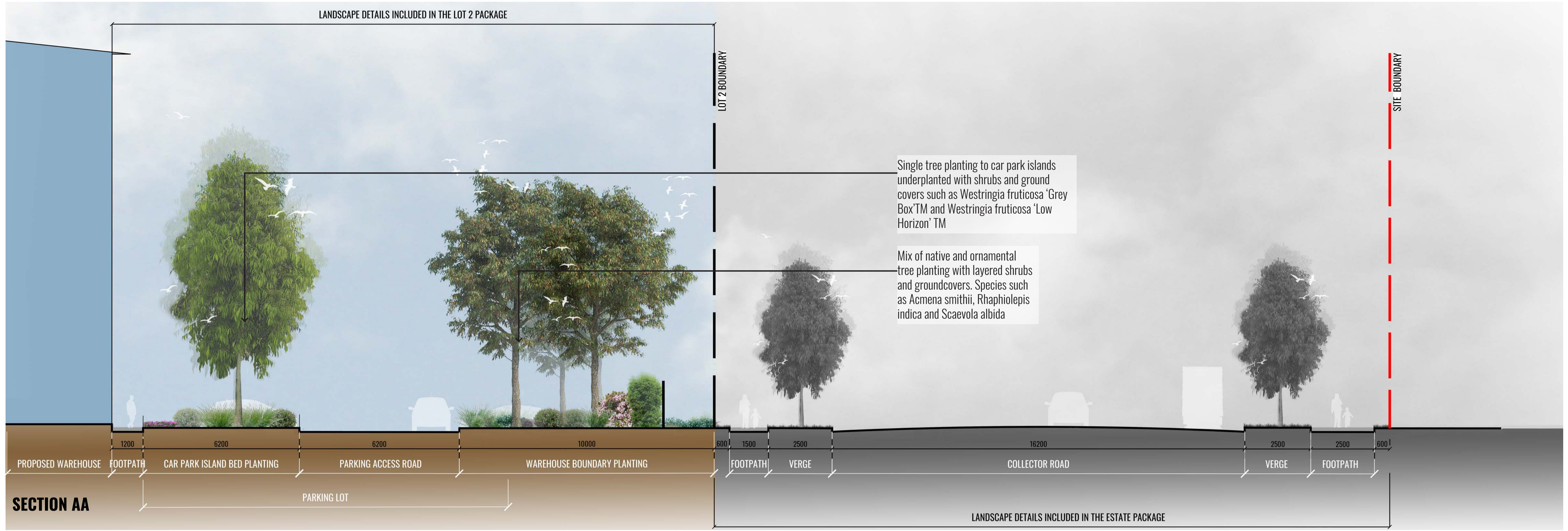
GEOSCAPES
 LANDSCAPE ARCHITECTS
 Suite 215, 284 Victoria Ave, Chatswood NSW 2067 Ph. (02) 9411 1485
 www.geoscapes.com.au
 ABN 84 620 205 781 ACN 620 205 781

Architect:

Client:

Scale: 1:250 @A1
 Date: 01.09.2021
 Job Number: 200826
 Project: 884-928 Mamre Road
 Kempers Creek, NSW 2178

FOR STATE SIGNIFICANT DEVELOPMENT APPLICATION					
Revision	Date	Description	Drawn	Checked	
D	16.07.21	FOR SSD	KC	BG	
E	19.07.21	FOR SSD	KC	BG	
F	24.08.21	FOR SSD	KC	BG	
G	01.09.21	FOR SSD	KC	BG	



Drawing Title:
Landscape Section AA & BB
 DWG No:
LDA-07

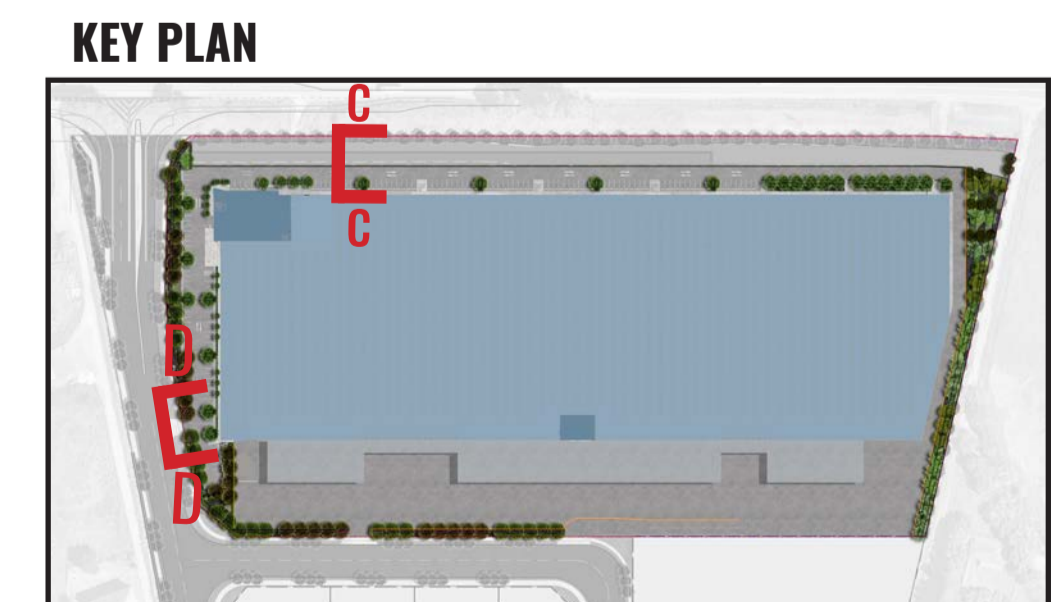
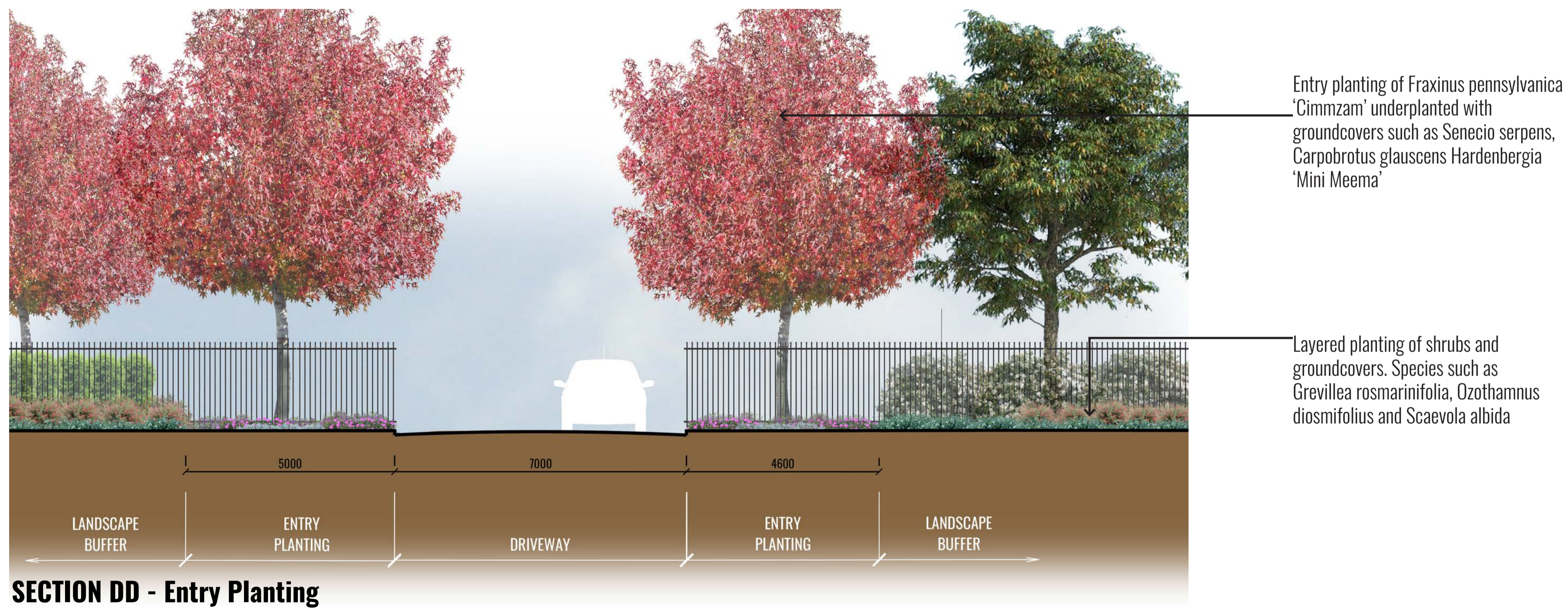
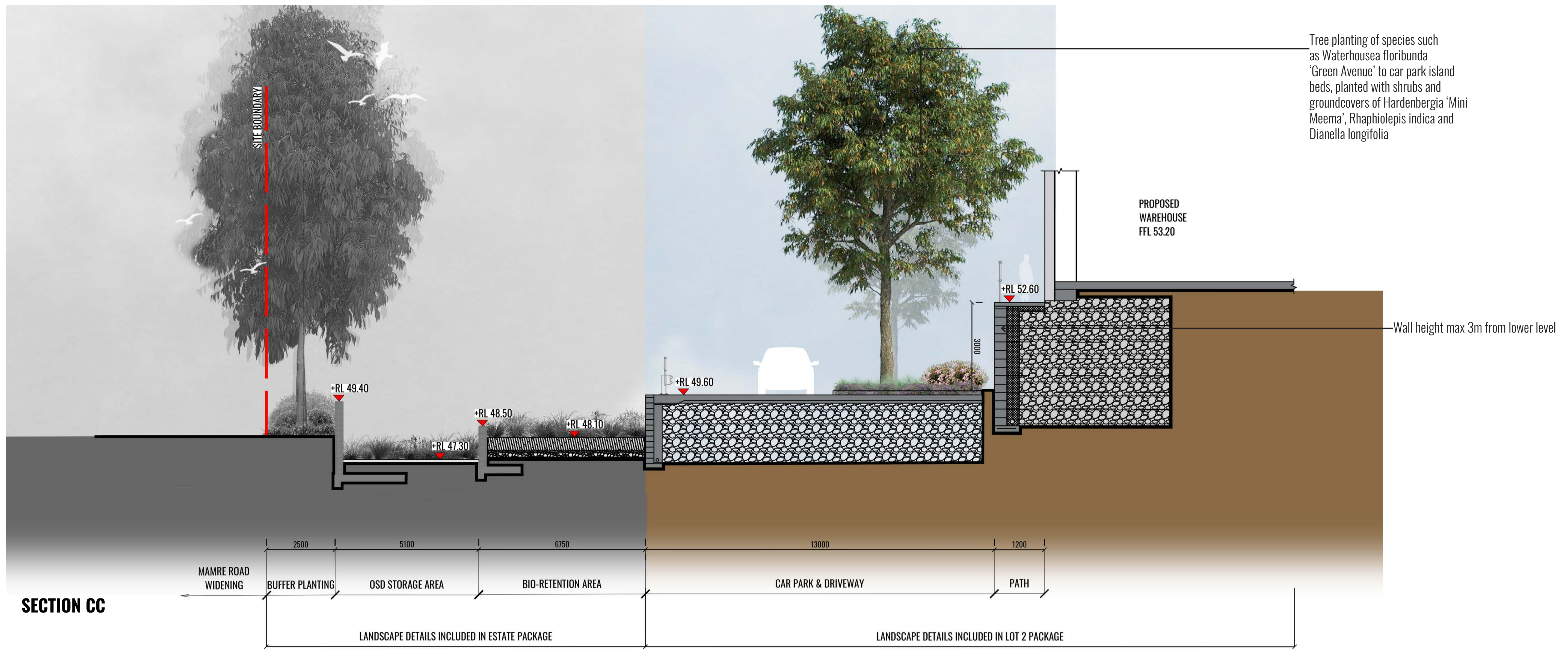
GEOSCAPES
 LANDSCAPE ARCHITECTS
 Suite 215, 284 Victoria Ave, Chatswood NSW 2067 Ph. (02) 9411 1485
 www.geoscapes.com.au
 ABN 84 620 205 781 ACN 620 205 781

Architect:

Client:

Scale: 1:75 @ A1 | Date: 01.09.2021 | Job Number: 200826 | North: N/A
 Project: 884-928 Mamre Road
 Kempers Creek, NSW 2178

Revision		FOR STATE SIGNIFICANT DEVELOPMENT APPLICATION			
Rev	Date	Description	Drawn	Checked	
D	16.07.21	FOR SSD	KC	BG	
E	19.07.21	FOR SSD	KC	BG	
F	24.08.21	FOR SSD	KC	BG	
G	01.09.21	FOR SSD	KC	BG	



Drawing Title:
Landscape Section CC &
 DWG No:

LDA-08

GEOSCAPES
 LANDSCAPE ARCHITECTS
 Suite 215, 284 Victoria Ave, Chatswood NSW 2067 Ph. (02) 9411 1485
 www.geoscapes.com.au
 ABN 84 620 205 781 ACN 620 205 781

Architect:

Client:

Scale:	Date:	Job Number:	North:	Revision FOR STATE SIGNIFICANT DEVELOPMENT APPLICATION				
1:75 @ A1	01.09.2021	200826	N/A	Rev	Date	Description	Drawn	Checked
Project: 884-928 Mamre Road Kemps Creek, NSW 2178				D	16.07.21	FOR SSD	KC	BG
				E	19.07.21	FOR SSD	KC	BG
				F	24.08.21	FOR SSD	KC	BG
				G	01.09.21	FOR SSD	KC	BG

MAINTENANCE PLAN

Maintenance shall mean the care and maintenance of the landscape works by accepted horticultural practice as rectifying any defects that become apparent in the landscape works under normal use. The landscape contractor shall attend the site on a **weekly basis** to maintain the landscape works commencing from practical completion.

Rubbish Removal

The Landscape Contractor shall undertake rubbish removal from the site on a **weekly basis** to ensure the site remains in tidy condition.

Weed Eradication

Weed growth that may occur in grassed, planted or mulched areas is to be removed using environmentally acceptable methods i.e. non-residual glyphosate herbicide (e.g. 'Roundup', applied in accordance with the manufacturer's direction.

Tree Replacement

Trees shall show signs of healthy vigorous growth and be free from disease and not exhibit signs of stress prior to handover to the client. Any trees or plant that die or fail to thrive, or are damaged or stolen will be replaced. Replacement material shall have the initial maintenance period extended in accordance with the landscape contract conditions. Trees and plant materials shall be equal to the minimum requirements of species specified and approved material delivered to site. Should the condition decline from the approved sample the Superintendent reserves the right to reject the tree / plants.

Frequency: as required.

Stakes

Adjust and/or replace stakes and ties where required. Remove staking and guying when instructed by the Superintendent

Pruning

Selective pruning may be required during the establishment period to promote a balanced canopy structure. These activities shall be carried out to the best horticultural and industry practice. All pruned material is to be removed from site.

Mulched Surfaces

All planter beds and garden areas shall have a minimum depth of 75mm organic mulch. All mulch is to be free of deleterious matter such as soil, weeds, sticks and should conform to AS 4454.

Mulched surfaces are to be kept clean and tidy and free of any deleterious material and foreign matter. Reinstall depths to a uniform level of 75mm with mulch as specified, mulch to be free of any wood material impregnated with CCA or similar toxic treatment. Top up mulch levels prior to handover to client & estate management. Organic mulch is not to be used within 1m of a building. Use pebble mulch in these areas instead.

Watering

Implement an appropriate hand watering regime in areas not irrigated in association with current watering programme to maintain plant health and vigour. The program shall reflect seasonal conditions and plant species.

Frequency: Weekly or as required.

Soil In Natural Ground

Non-Australian native garden beds to have soil installed consisting of 50% existing site topsoil and 50% new topsoil equal or equivalent to 'Organic Garden Mix' as supplied by Australian Native Landscapes. Australian native garden beds to have soil installed consisting of 50% existing site topsoil and 50% new topsoil equal or equivalent to 'Native Low 'P' Mix' as supplied by Australian Native Landscapes. Soil to conform to AS4419 refer to typical detail.

Pest and Disease Control

The Landscape Contractor shall spray for pests and disease infestations when the pest and fungal attack has been positively identified and when their populations have increased to a point that will become detrimental to plant growth. Apply all pesticides to manufacturer's directions.

Frequency: weekly inspection

Fertilising

Generally check for signs of nutrient deficiencies (yellowing of leaves, failure to thrive), and adapt fertiliser regime to suit. Fertiliser should be applied at the beginning and the end of the (summer) growing season.

Irrigation

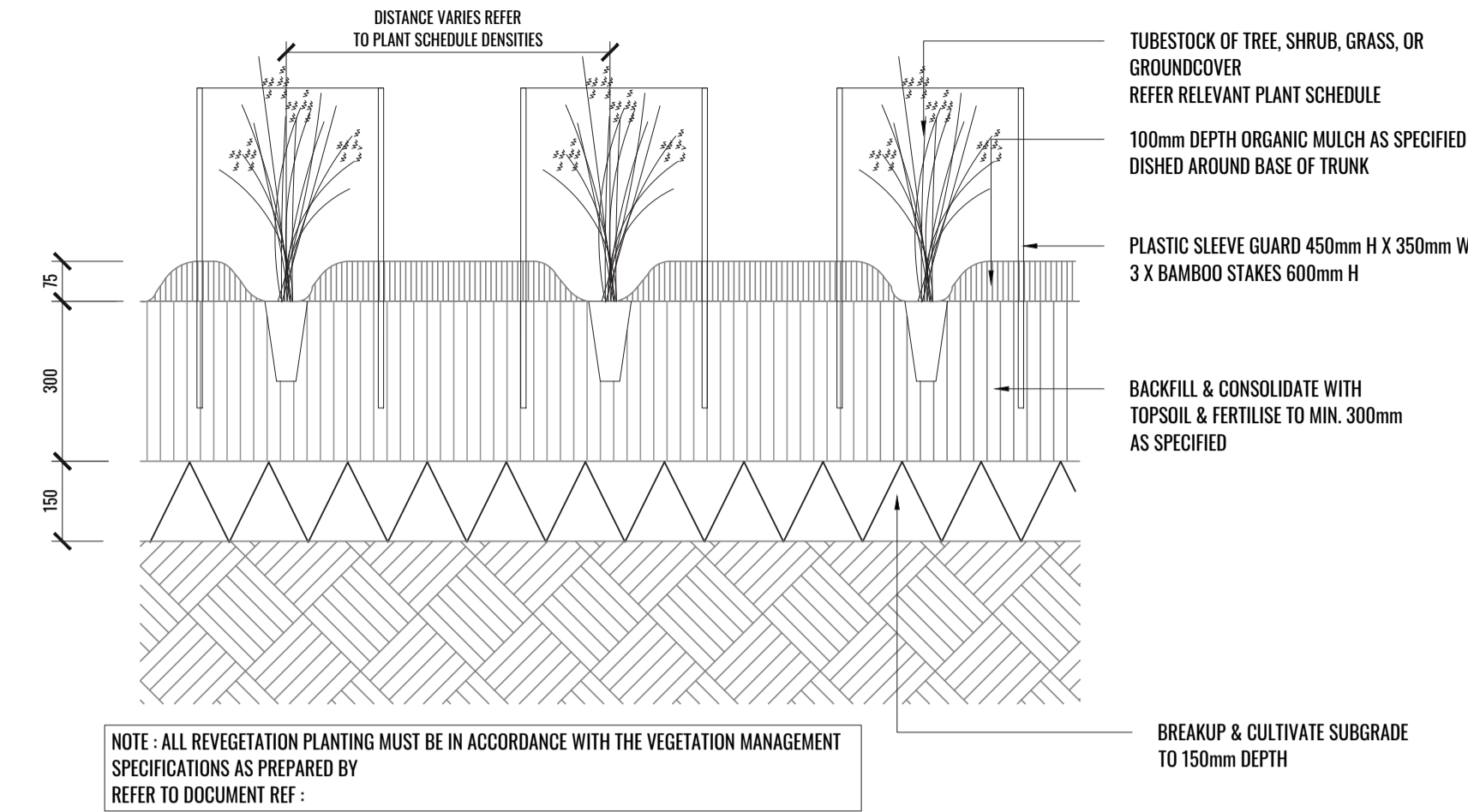
A sub surface dripper style, electrically automated self timed irrigation system is recommended to be supplied to all garden bed areas and planter container. Regular checks are to be made to ensure continued successful operation. The Landscape Contractor shall be responsible for coordination and engagement of a specialist irrigation designer and installation contractor to design, supply and install an automatic subterranean drip irrigation system to all raised planter beds.

The irrigation system will need to provide designated landscaped areas with enough water for vigorous healthy plant growth. As a general rule landscaped areas will need 20-25mm, species dependant, of water per week. The landscape Contractor will need to monitor natural rainfall using a rain switch in order to set irrigation flow rates accordingly on a monthly basis.

Standards

All grown or purchased plant stock must conform to all the conditions and requirements given in NATSPEC Guide: Specifying Trees. Soils to be in accordance with AS4419, mulching composts and conditioners to be in accordance with AS4454. Soils should conform to best practice specifications as listed in the Landscape Soils Handbook (Simon Leake & Elke Haage 2017).

TYPICAL LANDSCAPE DETAILS

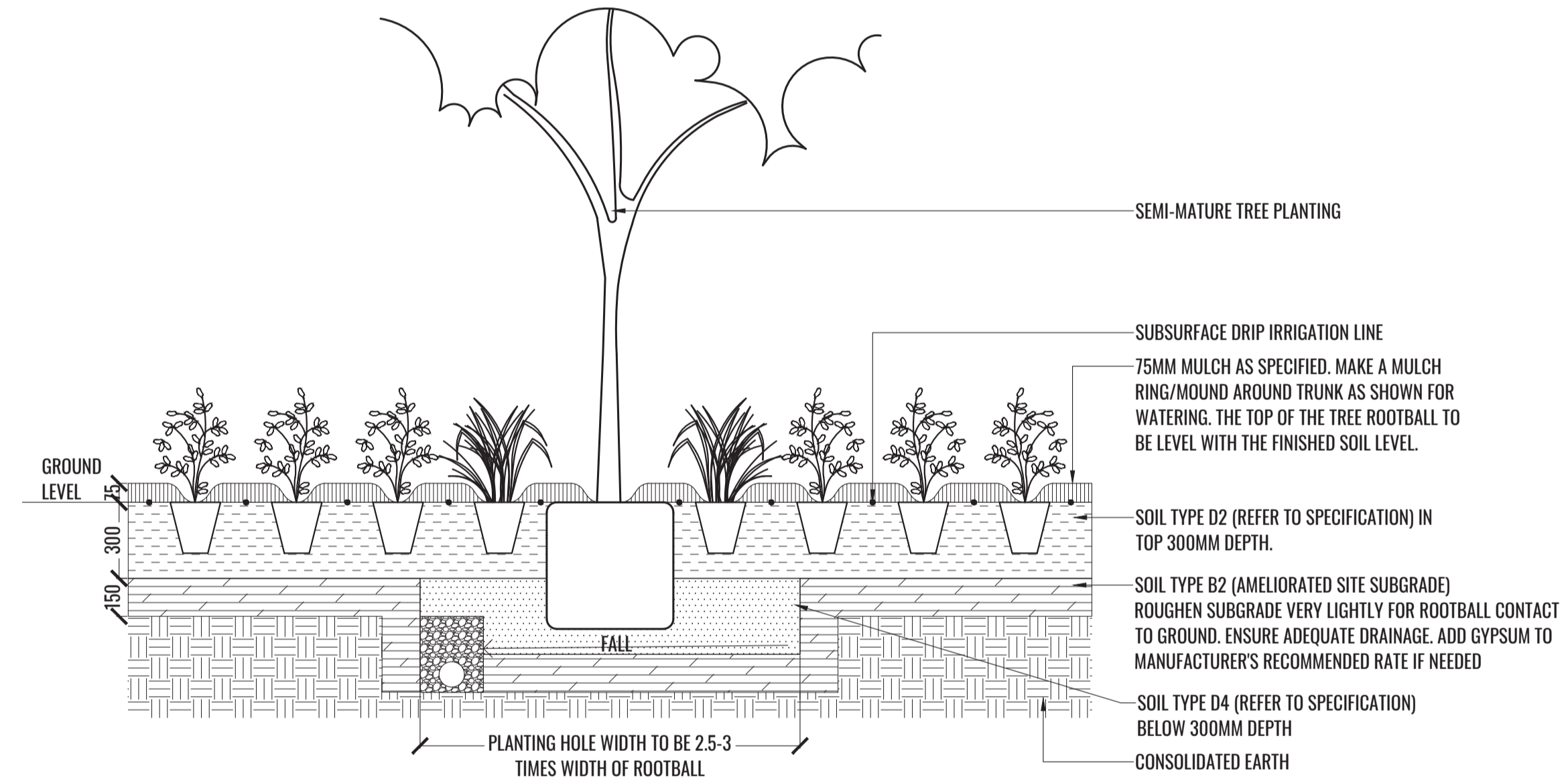


1 TUBESTOCK DETAIL

TYPICAL SECTION

SCALE 1:20

TREE/SHRUB SIZE AND QUALITY TO BE TO NATSPEC STANDARD. SPECIES IS TO BE AS PER PLAN AND PLANT SCHEDULE. ENSURE ONLY HEALTHY AND VIGOROUS, DISEASE FREE, WELL MAINTAINED PLANTS ARE USED. TAKE CARE TO ENSURE FOLIAGE, BRANCHES, TRUNKS AND ROOT CROWNS ARE NOT DAMAGED BEFORE, DURING AND AFTER PLANTING. ENSURE OPTIMUM MAINTENANCE AND ESTABLISHMENT OF TREES/SHRUBS OCCURS AS SOON AS THEY ARE AT SITE



2 MASS PLANTING AND TREE DETAIL

TYPICAL SECTION

SCALE 1:20

THOROUGHLY SOAK THE ROOTBALL OF TREE WITH FRESH WATER BEFORE TAKING OFF POT OR BAG. WHEN PLANTING HOLE IS COMPLETE USE A SHARP SPADE TO SHAVE OFF 20-50MM OF THE SIDES AND BASE OF ROOTBALL (TO ROOD PRUNE IT) BEFORE CAREFULLY PLACING INTO PLANTING HOLE. IF NORTH IS MARKED ON THE TREE, ENSURE ORIENTATION IS CORRECT WITH NORTH MARKING TO THE NORTH.

- REMOVE ANY STAKES, TIES AND LABELS. WATER ROOTBALL THOROUGHLY.
- TOP OF ROOTBALL TO FINISH FLUSH WITH TOP OF SOIL

Drawing Title:

Specification & Details

DWG No:

LDA-09



Suite 215, 284 Victoria Ave, Chatswood NSW 2067 Ph. (02) 9411 1485
www.geoscapes.com.au
ABN 84 620 205 781 ACN 620 205 781

Architect:



Client:



Scale:

As Shown @ A1
As Shown @ A3

Date:

01.09.2021

Job Number:

200826

North:

N/A

Project:

884-928 Mamre Road

Kemps Creek, NSW 2178

Revision

FOR STATE SIGNIFICANT DEVELOPMENT APPLICATION

Rev	Date	Description	Drawn	Checked
D	16.07.21	FOR SSD	KC	BG
E	19.07.21	FOR SSD	KC	BG
F	24.08.21	FOR SSD	KC	BG
G	01.09.21	FOR SSD	KC	BG

PLANTING SCHEDULE

Code	Botanical Name	Common Name	Mature Height	Cumberland Plain Species	Spacing	Pot Size	Qty*
Trees							
ANG FLO	<i>Angophora floribunda</i>	Rough-barked apple	20m	✓	As shown	100L	9
ANG SUB	<i>Angophora subvelutina</i>	Broad-Leaved Apple	17-25m	✓	As shown	100L	9
EXO CUP	<i>Exocarpos cupressiformis</i>	Native Cherry	8m	✓	As shown	100L	10
FRA CIM	<i>Fraxinus pennsylvanica 'Cimmzam'</i>	Claret Ash	12m		As shown	100L	24
MEL STY	<i>Melaleuca styphelioides</i>	Prickly Paperbark	20m	✓	As shown	100L	8
TRI LAU	<i>Tristaniopsis laurina 'Luscious'</i>	Water Gum	8m		As shown	100L	9
QUE PAL	<i>Quercus palustris 'Pringreen' Green Pillar</i>	Fastigiated Pin Oak	14m		As shown	100L	15
WAT FLO	<i>Waterhousea floribunda 'Green Avenue'</i>	Weeping Lilly Pilly	10m		As shown	100L	49
Shrubs							
ACM smi	<i>Acmena smithii</i>	Lilly Pilly	5m		1.25m Ctrs	200mm	92
BRE obl	<i>Breynia oblongifolia</i>	Coffee Bush	3m		As shown	200mm	23
DAV uli	<i>Daviesia ulicifolia</i>	Gorse Bitter-Pea	2m	✓	As shown	200mm	37
DIL jun	<i>Dillwynia juniperina</i>	Prickly Parrot-Pea	3m		As shown	200mm	17
DOD vis	<i>Dodonea viscosa subsp. viscosa</i>	Sticky Hop Bush	3m	✓	As shown	200mm	49
DOR exc	<i>Doryanthes excelsa</i>	Gynea Lily	3m		As shown	200mm	36
GRE ros	<i>Grevillea rosmarinifolia 'Crimson Villea'</i>	Crimson Villea Grevillea	0.7m		As shown	200mm	138
HAK ser	<i>Hakea sericea</i>	Needle Bush	7m		As shown	200mm	16
IND aus	<i>Indigofera australis</i>	Native Indigo	4m	✓	As shown	200mm	17
OZO dio	<i>Ozothamnus diosmifolius</i>	Rice Flower	2.5m	✓	As shown	200mm	72
RHA ind	<i>Rhaphiolepis indica</i>	Indian Hawthorn	1.5m		As shown or 0.8m Ctrs	200mm	156
VIB odo	<i>Viburnum odoratissimum</i>	Sweet Viburnum	2-4m		1.25m Ctrs	200mm	294
WES fru	<i>Westringia fruticosa</i>	Native Rosemary	1.5m		As shown	200mm	23
WES gre	<i>Westringia fruticosa 'Grey Box'™</i>	Native Rosemary	0.45m		As shown	200mm	125
WES nar	<i>Westringia fruticosa 'Naringa'</i>	Native Rosemary	2m		1.25m Ctrs	200mm	105
Grasses + Groundcover							
CAR ros	<i>Carpobrotus glaucescens</i>	Native Pigface	0.3m		3/m2	140mm	517
DIC rep	<i>Dichondra repens</i>	Kidney Plant	0.1m	✓	3/m2	140mm	788
DIA lon	<i>Dianella longifolia</i>	Blue Flax Lily	0.5m	✓	5/m2	Tubestock	1613
DIA rev	<i>Dianella revoluta</i>	Flax Lily	0.5m	✓	5/m2	Tubestock	1847
ERE blu	<i>Eremophila 'Blue Horizon'</i>	Emu Bush	0.25m		3/m2	140mm	408
HAR vio	<i>Hardenbergia violacea 'Mini Meema'</i>	Hardenbergia Meema	0.45m	✓	3/m2	140mm	1535
LOM mul	<i>Lomandra multiflora</i>	Club Rush	0.6m	✓	5/m2	Tubestock	1568
LOM tan	<i>Lomandra longifolia 'Tanika'</i>	Mat Rush	0.6m		5/m2	Tubestock	698
MYO par	<i>Myoporum parvifolium 'Yareena'</i>	Creeping Boobialla	0.2m		3/m2	140mm	349
PEN alo	<i>Pennisetum alopecuroides 'Nafray'</i>	Swamp Foxtail grass	0.7m		5/m2	Tubestock	113
POA lab	<i>Poa labillarderi</i>	Tussock Grass	0.5m		5/m2	Tubestock	1271
RHA spi	<i>Rhagodia spinescens</i>	Aussie Flat Bush	0.5m		3/m2	140mm	288
SCA alb	<i>Scaevola albida</i>	Fan Flower	0.2m	✓	4/m2	140mm	600
SEN ser	<i>Senecio serpens</i>	Blue Chalksticks	0.3m		3/m2	140mm	307
WES low	<i>Westringia fruticosa 'Low Horizon'™</i>	Low Horizon Westringia	0.3m		3/m2	140mm	415

*Plant numbers to be finalised at Detailed Design / CC-Tender stage

PLANT IMAGES



A. *Angophora floribunda* B. *Fraxinus pennsylvanica 'Cimmzam'* C. *Ozothamnus diosmifolius* D. *Tristaniopsis laurina 'Luscious'* E. *Quercus palustris 'Pringreen' Green Pillar* F. *Indigofera australis* G. *Rhaphiolepis indica* H. *Carpobrotus glaucescens* I. *Westringia fruticosa 'Naringa'* J. *Hardenbergia violacea 'Mini Meema'* K. *Scaevola albida* L. *Waterhousea floribunda 'Green Avenue'* M. *Westringia fruticosa 'Low Horizon'™* N. *Lomandra longifolia 'Tanika'* O. *Rhagodia spinescens* P. *Exocarpos cupressiformis*

Drawing Title:
Planting Schedule & Imagery
DWG No:
LDA-10

GEOSCAPES
LANDSCAPE ARCHITECTS
Suite 215, 284 Victoria Ave, Chatswood NSW 2067 Ph. (02) 9411 1485
www.geoscapes.com.au
ABN 84 620 205 781 ACN 620 205 781

Architect:
nettleontribe

Client:
ALTIS
PROPERTY PARTNERS

Scale:	Date:	Job Number:	North:	Revision	FOR STATE SIGNIFICANT DEVELOPMENT APPLICATION			
N/A	01.09.2021	200826	N/A	Rev	Date	Description	Drawn	Checked
				D	16.07.21	FOR SSD	KC	BG
				E	19.07.21	FOR SSD	KC	BG
				F	24.08.21	FOR SSD	KC	BG
				G	01.09.21	FOR SSD	KC	BG
Project:	884-928 Mamre Road Kemps Creek, NSW 2178							