

884-928 Mamre Road, Kemp's Creek, NSW 2178

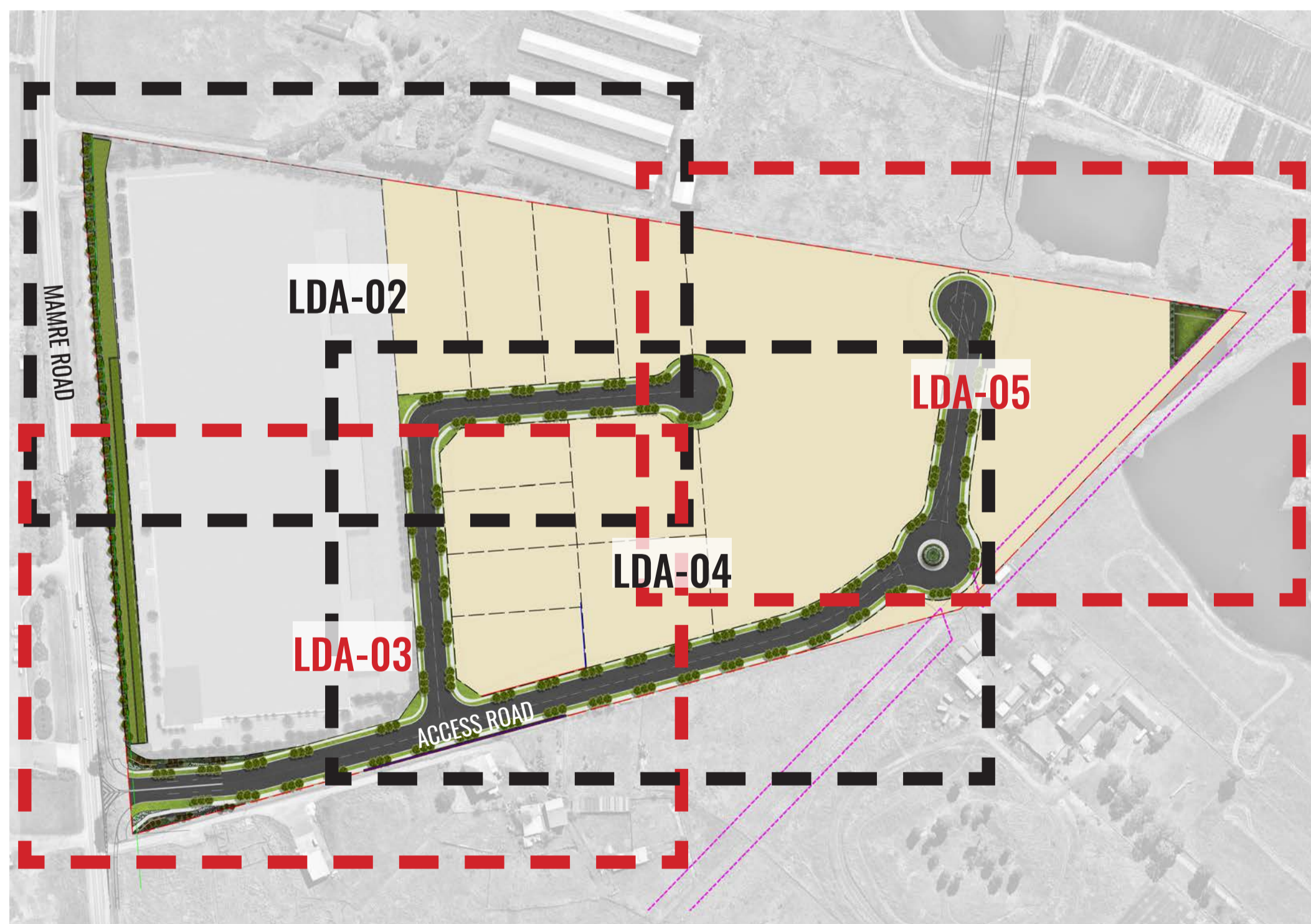
Landscape Documentation for Industrial Estate Subdivision - State Significant Development Application



IMAGE TAKEN FROM NEARMAP 2021

Drawing Register

Dwg No.	Drawing Name
LDA-00	Landscape Cover Sheet
LDA-01	Landscape Masterplan
LDA-02	Landscape Detail Plan - Sheet 1
LDA-03	Landscape Detail Plan - Sheet 2
LDA-04	Landscape Detail Plan - Sheet 3
LDA-05	Landscape Detail Plan - Sheet 4
LDA-06	Landscape Section AA & BB
LDA-07	Landscape Sections CC & DD
LDA-08	Landscape Section EE & Typical Details
LDA-09	Specification & Typical Details
LDA-10	Indicative Planting Schedule & Imagery



KEY PLAN - SHEET LAYOUTS

NTS



SITE PLAN

Drawing Title:
Landscape Cover Sheet
DWG No:

LDA-00

GEOSCAPES
LANDSCAPE ARCHITECTS
Suite 215, 284 Victoria Ave, Chatswood NSW 2067 Ph. (02) 9411 1485
www.geoscapes.com.au
ABN 84 620 205 781 ACN 620 205 781

Architect:
nettleontribe

Client:
ALTIS
PROPERTY PARTNERS

Scale:	Date:	Job Number:	North:	Revision FOR STATE SIGNIFICANT DEVELOPMENT APPLICATION				
N.A.	01.09.21	200827		Rev	Date	Description	Drawn	Checked
Project:				C	16.07.21	FOR SSD	KC	BG
				D	19.07.21	FOR SSD	KC	BG
				E	24.08.21	FOR SSD	KC	BG
				F	01.09.21	FOR SSD	KC	BG

884-928 Mamre Road
Kemp's Creek, NSW

LOT 3 - Planting of evergreen trees at site boundary as buffer to Mamre road widening underplanted with native shrubs and groundcovers. Species to include *Waterhousea floribunda* and *Ozothamnus diosmifolius*

Tristaniopsis laurina street trees in groups of 3 to streetscape at 10m centres within turf verge.

Alternate street tree planting of *Waterhousea floribunda* and *Cupaniopsis anacardioides* in turfed verges adjacent to footpaths



PART OF SEPARATE LOT 2 LANDSCAPE PACKAGE

Bio basin area with planting as specified under Penrith City Council WSUD guidelines. Species to include *Ficinia nodosa*, *Juncus usitatus*, *Lomandra longifolia* etc. **Refer to planting schedule on LDA-10**

Landscaping to roundabout with feature planting of *Ficus microcarpa hillii* underplanted with *Gazania tomentosa* and *Lomandra longifolia* 'Tanika'

Street tree planting in groups of 3. Species such as *Cupaniopsis anacardioides* and *Waterhousea floribunda* in turfed verges adjacent to footpaths

LOT 1 - Proposed Bio-basin and OSD storage area with planting as specified under Penrith City Council WSUD guidelines. Species to include *Ficinia nodosa*, *Juncus usitatus*, *Lomandra longifolia* etc. **Refer to planting schedule on LDA-10**

Lapped and capped timber interim acoustic wall planted with *Clematis aristata* climbers on both sides at 400mm centres.

Drawing Title:
Landscape Masterplan
DWG No:

LDA-01

GEOSCAPES
LANDSCAPE ARCHITECTS
Suite 215, 284 Victoria Ave, Chatswood NSW 2067 Ph. (02) 9411 1485
www.geoscapes.com.au
ABN 84 620 205 781 ACN 620 205 781

Architect:
nettleontribe

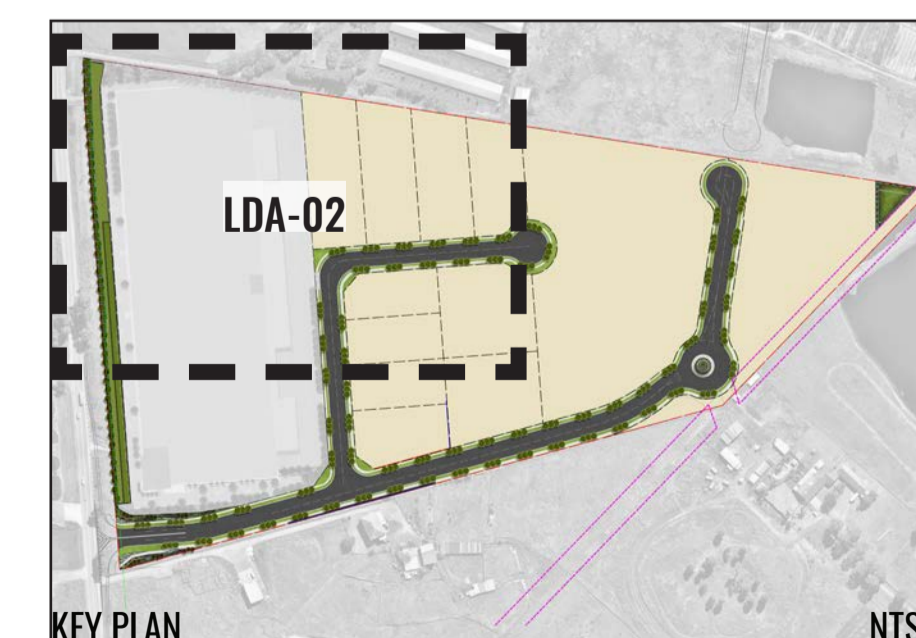
Client:
ALTIS
PROPERTY PARTNERS

Scale: 1:1000 @ A1 1:2000 @ A3	Date: 01.09.21	Job Number: 200827	North: 	Revision	FOR STATE SIGNIFICANT DEVELOPMENT APPLICATION			
Project:	884-928 Mamre Road Kemps Creek, NSW			Rev	Date	Description	Drawn	Checked
				C	16.07.21	FOR SSD	KC	BG
				D	19.07.21	FOR SSD	KC	BG
				E	24.08.21	FOR SSD	KC	BG
				F	01.09.21	FOR SSD	KC	BG



LEGEND

- CADASTRAL BOUNDARY
- LOT BOUNDARIES
- PROPOSED FREIGHT ROAD EASEMENT
- PROPOSED STREET TREES
- PROPOSED SHRUBS
- PROPOSED GROUNDCOVER PLANTING
- PROPOSED TURFED VERGE WITH FOOTPATH (VARIABLE WIDTHS)
- PROPOSED ROAD
- PROPOSED LOT SUBDIVISION
- OSD STORAGE AREA
- BIO-RETENTION AREA
- BASIN PLANTING REFER TO LDA-10
- INDICATIVE POSITION OF FEATURE WALLING
- TNSW ROAD WIDENING BOUNDARY
- TEMPORARY ACOUSTIC BARRIER 4.6M ABOVE LOT 12 PAD LEVEL RL
- TEMPORARY ACOUSTIC BARRIER 3M ABOVE LOT 13 PAD LEVEL RL
- INTERIM ACOUSTIC BARRIER 3M ABOVE ACCESS ROAD RL
- CLIMBERS TO BASE OF INTERIM ACOUSTIC WALL
- PROPOSED HEDGE



Drawing Title:
Landscape Detail Plan - Sheet 1
DWG No:

LDA-02

GEOSCAPES
LANDSCAPE ARCHITECTS
Suite 215, 284 Victoria Ave, Chatswood NSW 2067 Ph. (02) 9411 1485
www.geoscapes.com.au
ABN 84 620 205 781 ACN 620 205 781

Architect:
 nettleontribe

Client:
ALTIS
PROPERTY PARTNERS

Scale:
1:500 @ A1
1:1000 @ A3

Date:
01.09.21

Job Number:
200827

North:

Project:

884-928 Mamre Road
Kemps Creek, NSW

Revision		FOR STATE SIGNIFICANT DEVELOPMENT APPLICATION		
Rev	Date	Description	Drawn	Checked
C	16.07.21	FOR SSD	KC	BG
D	19.07.21	FOR SSD	KC	BG
E	24.08.21	FOR SSD	KC	BG
F	01.09.21	FOR SSD	KC	BG



PART OF SEPARATE LOT 2
LANDSCAPE PACKAGE

LEGEND

- CADASTRAL BOUNDARY
- LOT BOUNDARIES
- PROPOSED FREIGHT ROAD EASEMENT
- PROPOSED STREET TREES
- PROPOSED SHRUBS
- PROPOSED GROUNDCOVER PLANTING
- PROPOSED TURFED VERGE WITH FOOTPATH (VARIABLE WIDTHS)
- PROPOSED ROAD
- PROPOSED LOT SUBDIVISION
- OSD STORAGE AREA
- BIO-RETENTION AREA
- BASIN PLANTING REFER TO LDA-10
- INDICATIVE POSITION OF FEATURE WALLING
- TNSW ROAD WIDENING BOUNDARY
- TEMPORARY ACOUSTIC BARRIER 4.6M ABOVE LOT 12 PAD LEVEL RL
- TEMPORARY ACOUSTIC BARRIER 3M ABOVE LOT 13 PAD LEVEL RL
- INTERIM ACOUSTIC BARRIER 3M ABOVE ACCESS ROAD RL
- CLIMBERS TO BASE OF INTERIM ACOUSTIC WALL
- PROPOSED HEDGE



Drawing Title:
Landscape Detail Plan - Sheet 3
DWG No:

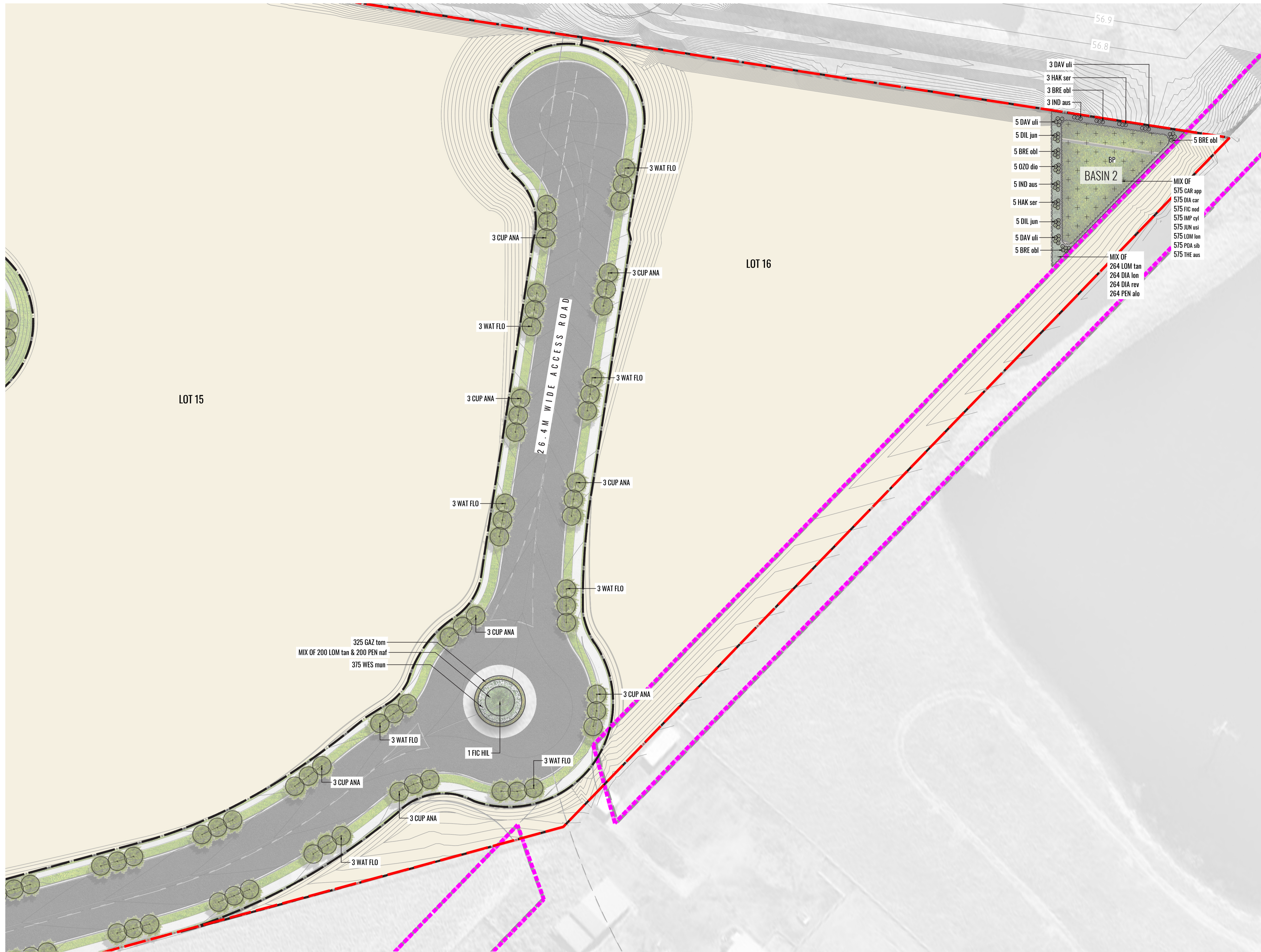
LDA-04

GEOSCAPES
LANDSCAPE ARCHITECTS
Suite 215, 284 Victoria Ave, Chatswood NSW 2067 Ph. (02) 9411 1485
www.geoscapes.com.au
ABN 84 620 205 781 ACN 620 205 781

Architect:

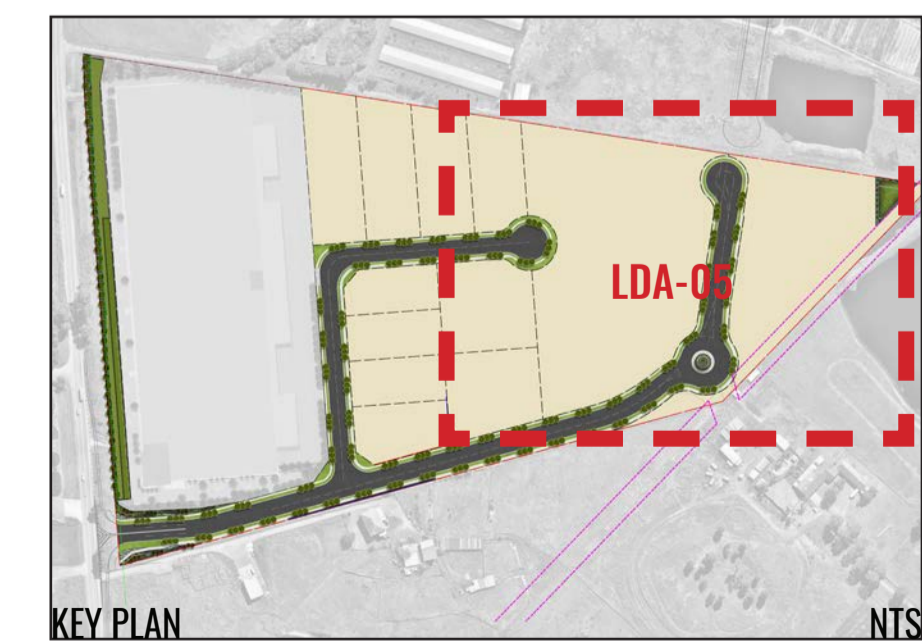
Client:
ALTIS
PROPERTY PARTNERS

Scale:	Date:	Job Number:	North:	Revision	FOR STATE SIGNIFICANT DEVELOPMENT APPLICATION				
	01.09.21	200827		Rev	Date	Description	Drawn	Checked	
Project:	884-928 Mamre Road Kemps Creek, NSW			C	16.07.21	FOR SSD	KC	BG	
				D	19.07.21	FOR SSD	KC	BG	
				E	24.08.21	FOR SSD	KC	BG	
				F	01.09.21	FOR SSD	KC	BG	



LEGEND

- CADASTRAL BOUNDARY
- LOT BOUNDARIES
- PROPOSED FREIGHT ROAD EASEMENT
- PROPOSED STREET TREES
- PROPOSED SHRUBS
- PROPOSED GROUNDCOVER PLANTING
- PROPOSED TURFED VERGE WITH FOOTPATH (VARIABLE WIDTHS)
- PROPOSED ROAD
- PROPOSED LOT SUBDIVISION
- OSD STORAGE AREA
- BIO-RETENTION AREA
- BASIN PLANTING REFER TO LDA-10
- FSW INDICATIVE POSITION OF FEATURE WALLING
- TNSW ROAD WIDENING BOUNDARY
- TEMPORARY ACOUSTIC BARRIER 4.6M ABOVE LOT 12 PAD LEVEL RL
- TEMPORARY ACOUSTIC BARRIER 3M ABOVE LOT 13 PAD LEVEL RL
- INTERIM ACOUSTIC BARRIER 3M ABOVE ACCESS ROAD RL
- CLIMBERS TO BASE OF INTERIM ACOUSTIC WALL
- PROPOSED HEDGE



Drawing Title:
Landscape Detail Plan - Sheet 4
 DWG No:
LDA-05

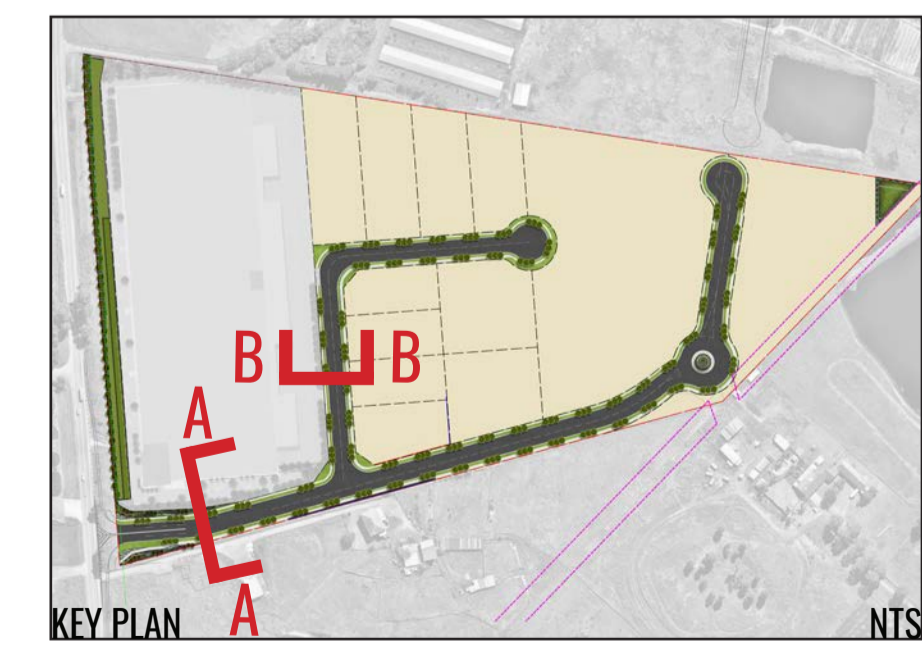
GEOSCAPES
 LANDSCAPE ARCHITECTS
 Suite 215, 284 Victoria Ave, Chatswood NSW 2067 Ph. (02) 9411 1485
 www.geoscapes.com.au
 ABN 84 620 205 781 ACN 620 205 781

Architect:

Client:

Scale: 1:500 @ A1
 1:1000 @ A3
 Date: 01.09.21
 Job Number: 200827
 North:
 Project: 884-928 Mamre Road
 Kemps Creek, NSW

FOR STATE SIGNIFICANT DEVELOPMENT APPLICATION					
Revision	Date	Description	Drawn	Checked	
C	16.07.21	FOR SSD	KC	BG	
D	19.07.21	FOR SSD	KC	BG	
E	24.08.21	FOR SSD	KC	BG	
F	01.09.21	FOR SSD	KC	BG	



Drawing Title:
Landscape Sections AA & BB
 DWG No:

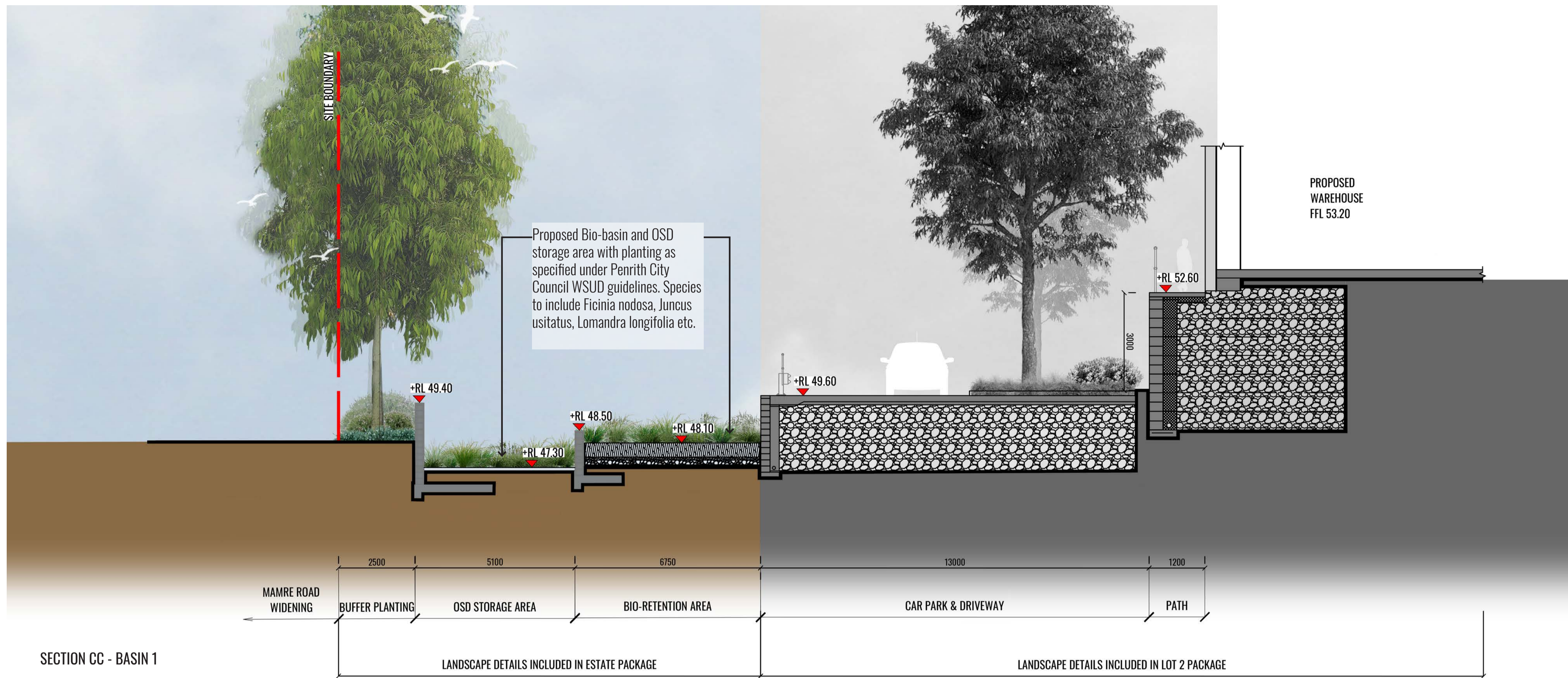
LDA-06

GEOSCAPES
 LANDSCAPE ARCHITECTS
 Suite 215, 284 Victoria Ave, Chatswood NSW 2067 Ph. (02) 9411 1485
 www.geoscapes.com.au
 ABN 84 620 205 781 ACN 620 205 781

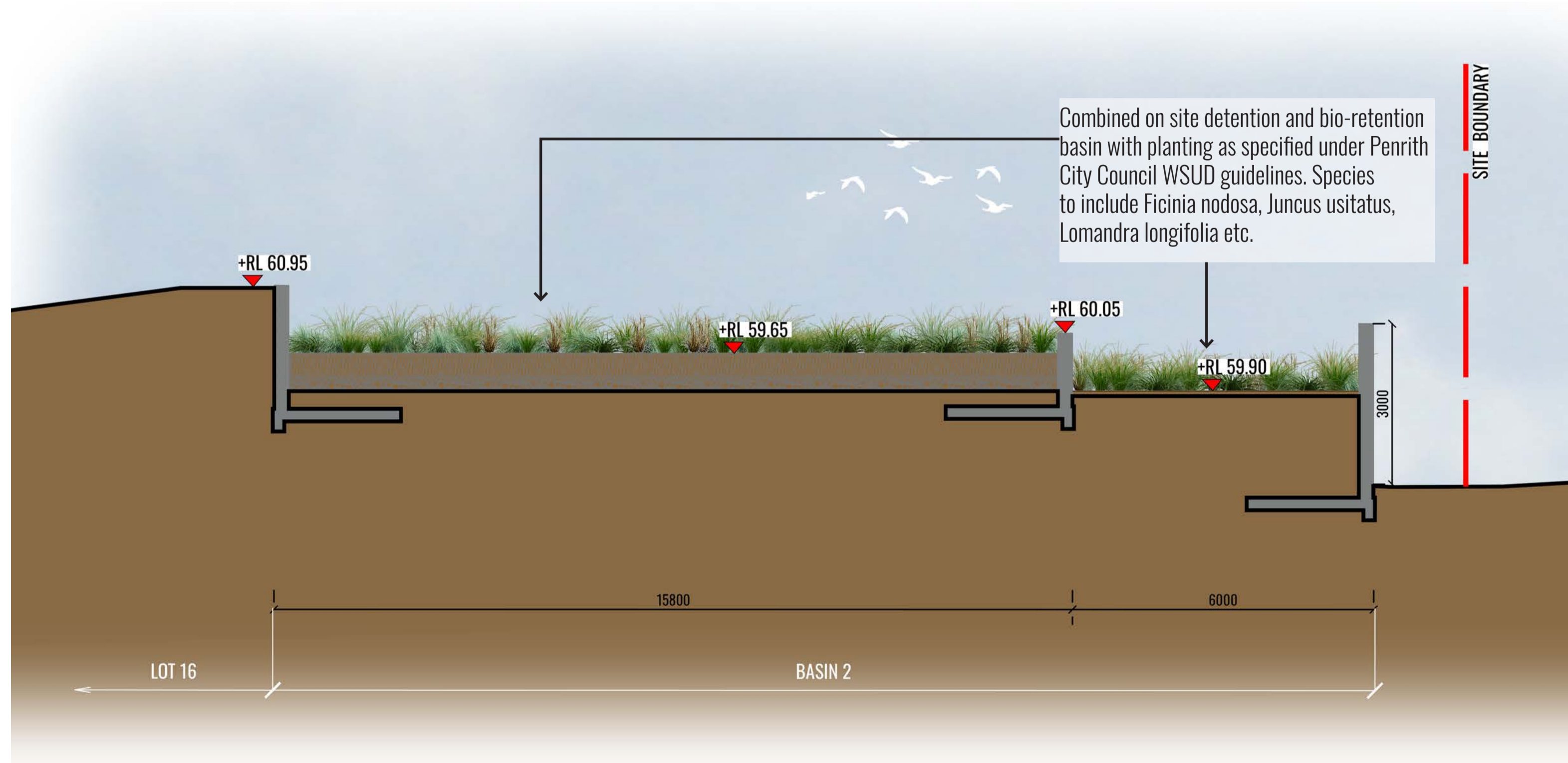
Architect:

Client:

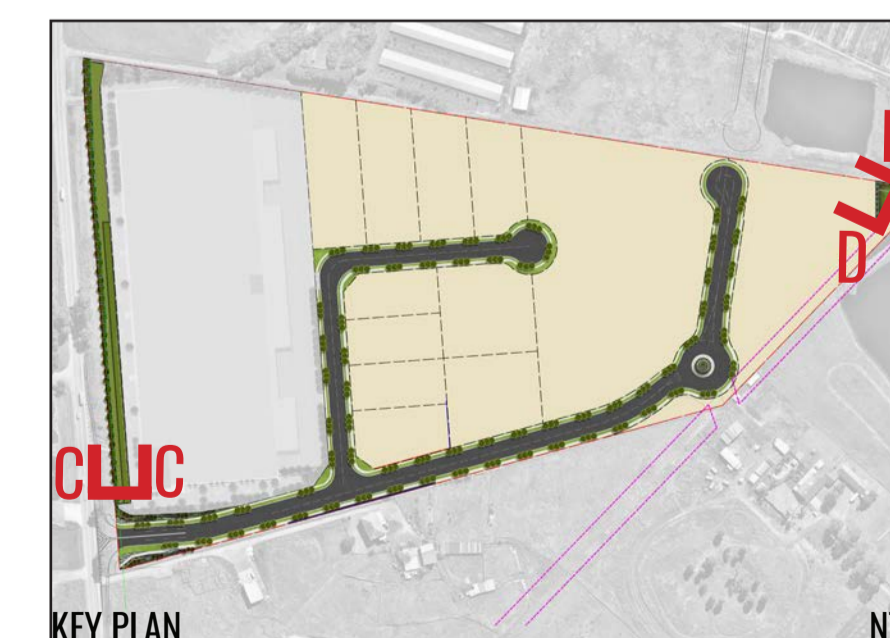
Scale: 1:75 @ A1 1:150 @ A3	Date: 01.09.21	Job Number: 200827	North: N.A.	Revision FOR STATE SIGNIFICANT DEVELOPMENT APPLICATION				
Project: 884-928 Mamre Road Kemps Creek, NSW				Rev	Date	Description	Drawn	Checked
				C	16.07.21	FOR SSD	KC	BG
				D	19.07.21	FOR SSD	KC	BG
				E	24.08.21	FOR SSD	KC	BG
				F	01.09.21	FOR SSD	KC	BG



SECTION CC - BASIN 1



SECTION DD - BASIN 2



Drawing Title:
Landscape Sections CC & DD
 DWG No:

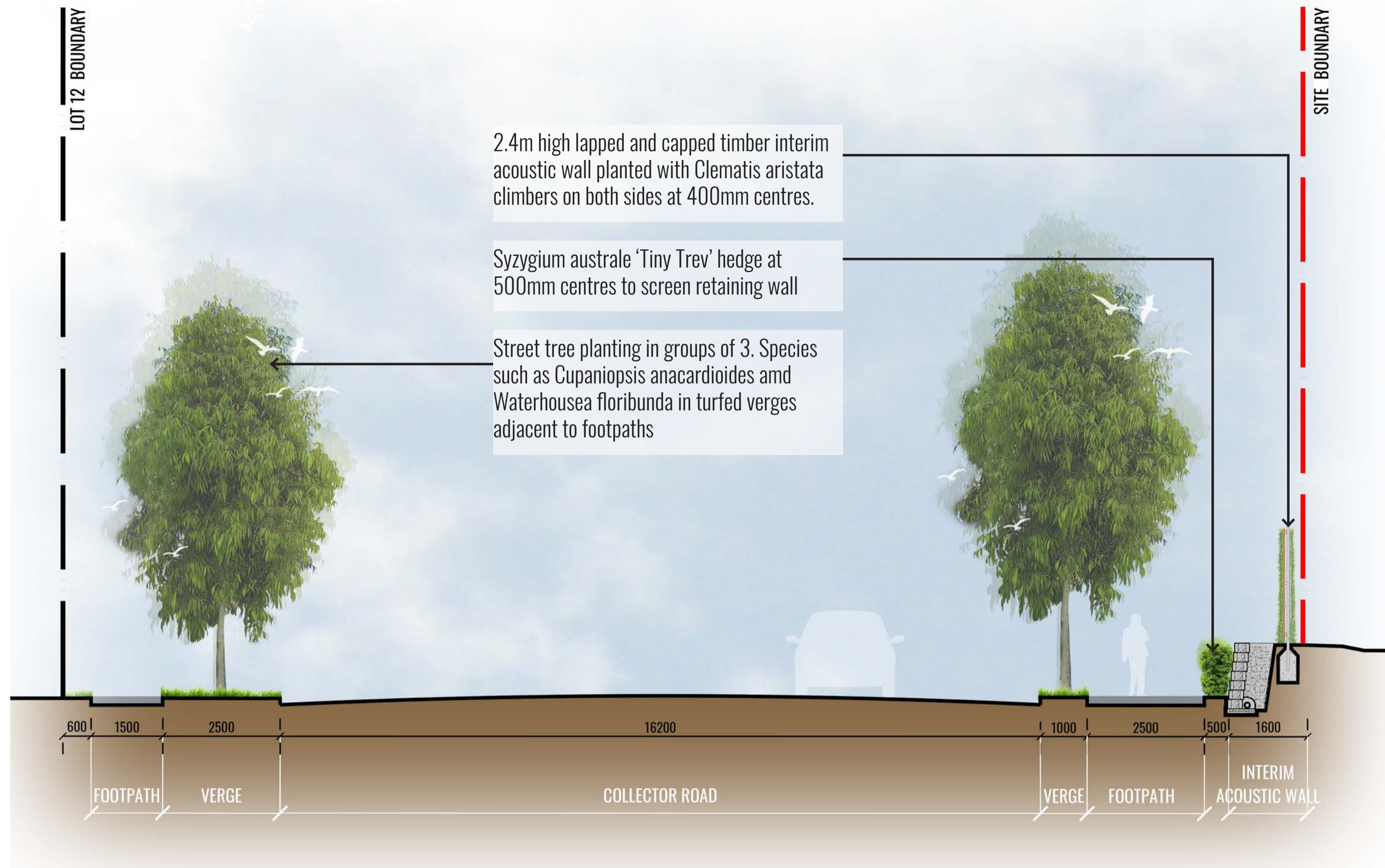
LDA-07

GEOSCAPES
 LANDSCAPE ARCHITECTS
 Suite 215, 284 Victoria Ave, Chatswood NSW 2067 Ph. (02) 9411 1485
 www.geoscapes.com.au
 ABN 84 620 205 781 ACN 620 205 781

Architect:

Client:
ALTIS
 PROPERTY PARTNERS

Scale:	Date:	Job Number:	North:	Revision	FOR STATE SIGNIFICANT DEVELOPMENT APPLICATION			
1:75 @ A1 1:150 @ A3	01.09.21	200827	N.A.	Rev	Date	Description	Drawn	Checked
Project:	884-928 Mamre Road Kemps Creek, NSW			C	16.07.21	FOR SSD	KC	BG
				D	19.07.21	FOR SSD	KC	BG
				E	24.08.21	FOR SSD	KC	BG
				F	01.09.21	FOR SSD	KC	BG



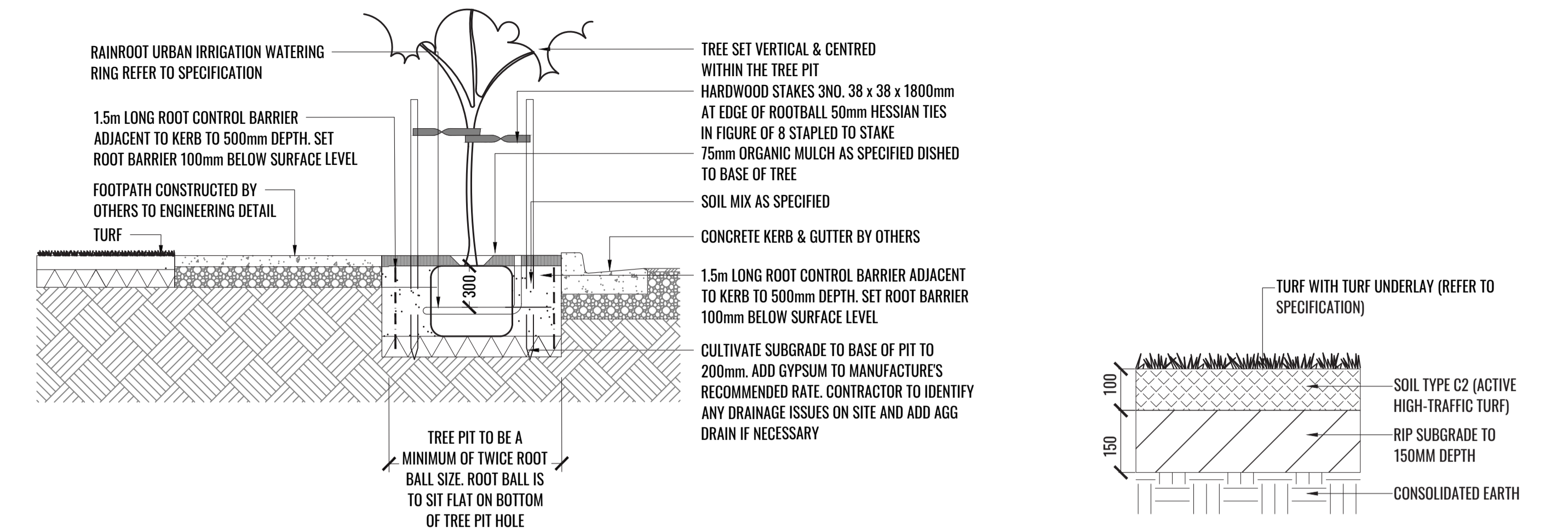
2.4m high lapped and capped timber interim acoustic wall planted with Clematis aristata climbers on both sides at 400mm centres.

Syzygium australe 'Tiny Trev' hedge at 500mm centres to screen retaining wall

Street tree planting in groups of 3. Species such as Cupaniopsis anacardioides and Waterhousea floribunda in turfed verges adjacent to footpaths

SECTION EE - INTERIM ACOUSTIC WALL

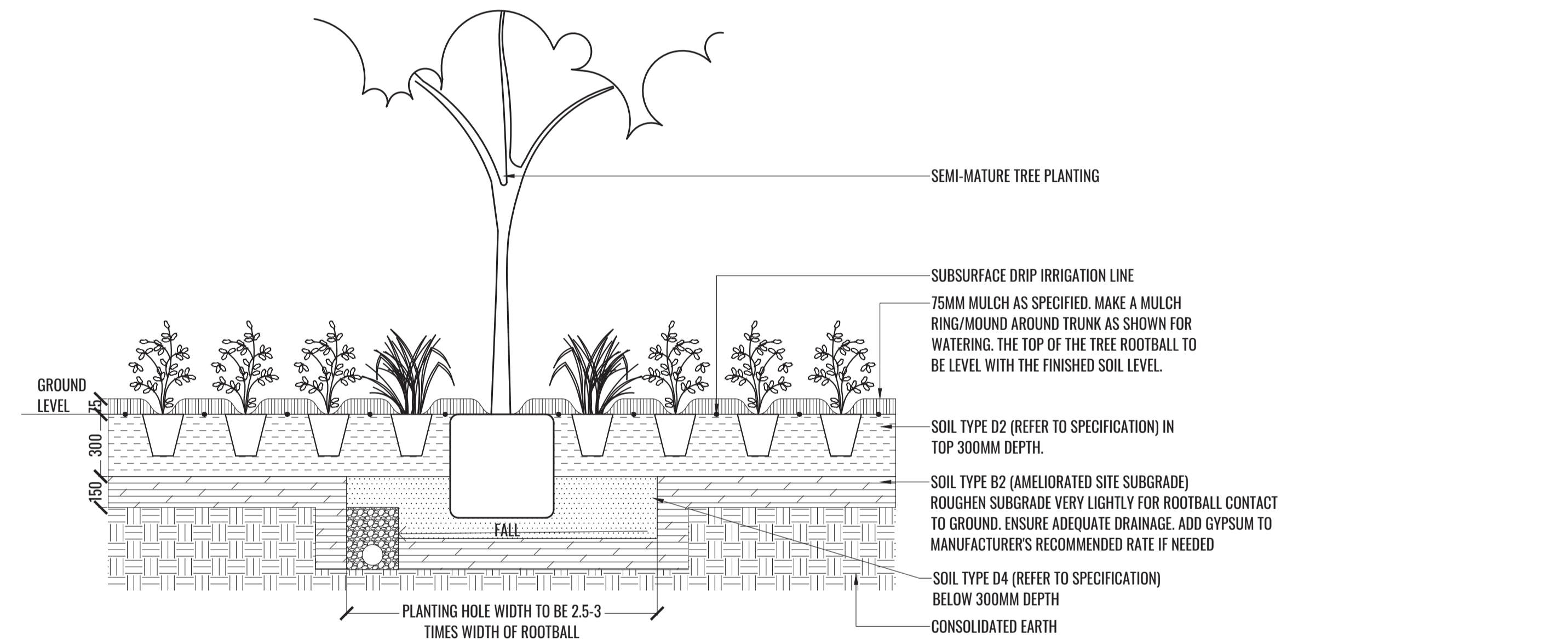
TYPICAL LANDSCAPE DETAILS



1 STREET TREE PLANTING IN TURF VERGE TYPICAL DETAIL TYPICAL SECTION SCALE 1:30

2 TURF DETAIL TYPICAL SECTION SCALE 1:10

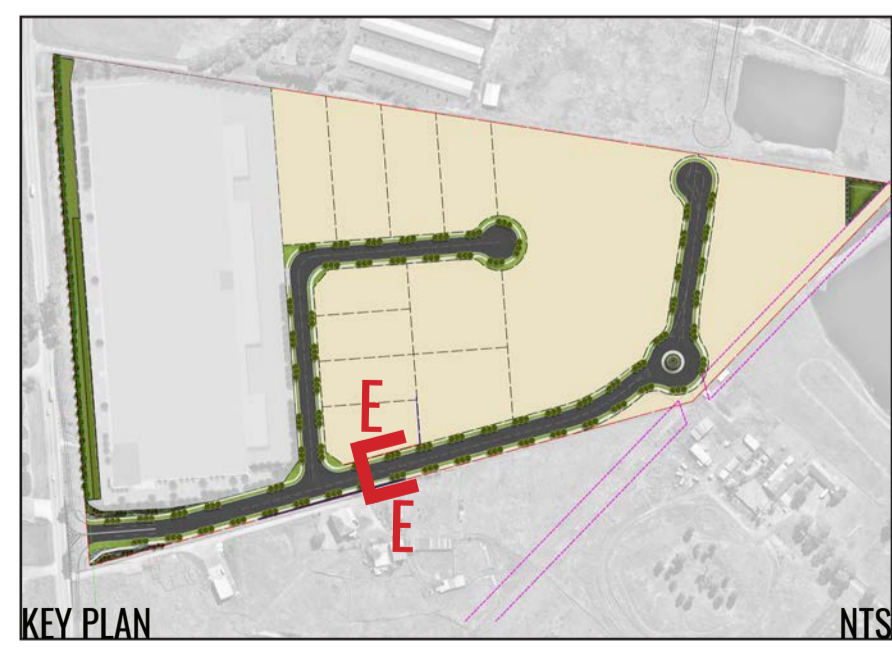
TREE/SHRUB SIZE AND QUALITY TO BE TO NATSPEC STANDARD. SPECIES IS TO BE AS PER PLAN AND PLANT SCHEDULE. ENSURE ONLY HEALTHY AND VIGOROUS, DISEASE FREE, WELL MAINTAINED PLANTS ARE USED. TAKE CARE TO ENSURE FOLIAGE, BRANCHES, TRUNKS AND ROOT CROWNS ARE NOT DAMAGED BEFORE, DURING AND AFTER PLANTING. ENSURE OPTIMUM MAINTENANCE AND ESTABLISHMENT OF TREES/SHRUBS OCCURS AS SOON AS THEY ARE AT SITE



THOROUGHLY SOAK THE ROOTBALL OF TREE WITH FRESH WATER BEFORE TAKING OFF POT OR BAG. WHEN PLANTING HOLE IS COMPLETE USE A SHARP SPADE TO SHAVE OFF 20-50MM OF THE SIDES AND BASE OF ROOTBALL (TO ROOT PRUNE IT) BEFORE CAREFULLY PLACING INTO PLANTING HOLE. IF NORTH IS MARKED ON THE TREE, ENSURE ORIENTATION IS CORRECT WITH NORTH MARKING TO THE NORTH.

- REMOVE ANY STAKES, TIES AND LABELS. WATER ROOTBALL THOROUGHLY.
- TOP OF ROOTBALL TO FINISH FLUSH WITH TOP OF SOIL

3 MASS PLANTING AND TREE DETAIL TYPICAL SECTION SCALE 1:20



Drawing Title:
Landscape Section EE & Typical Details
DWG No:
LDA-08

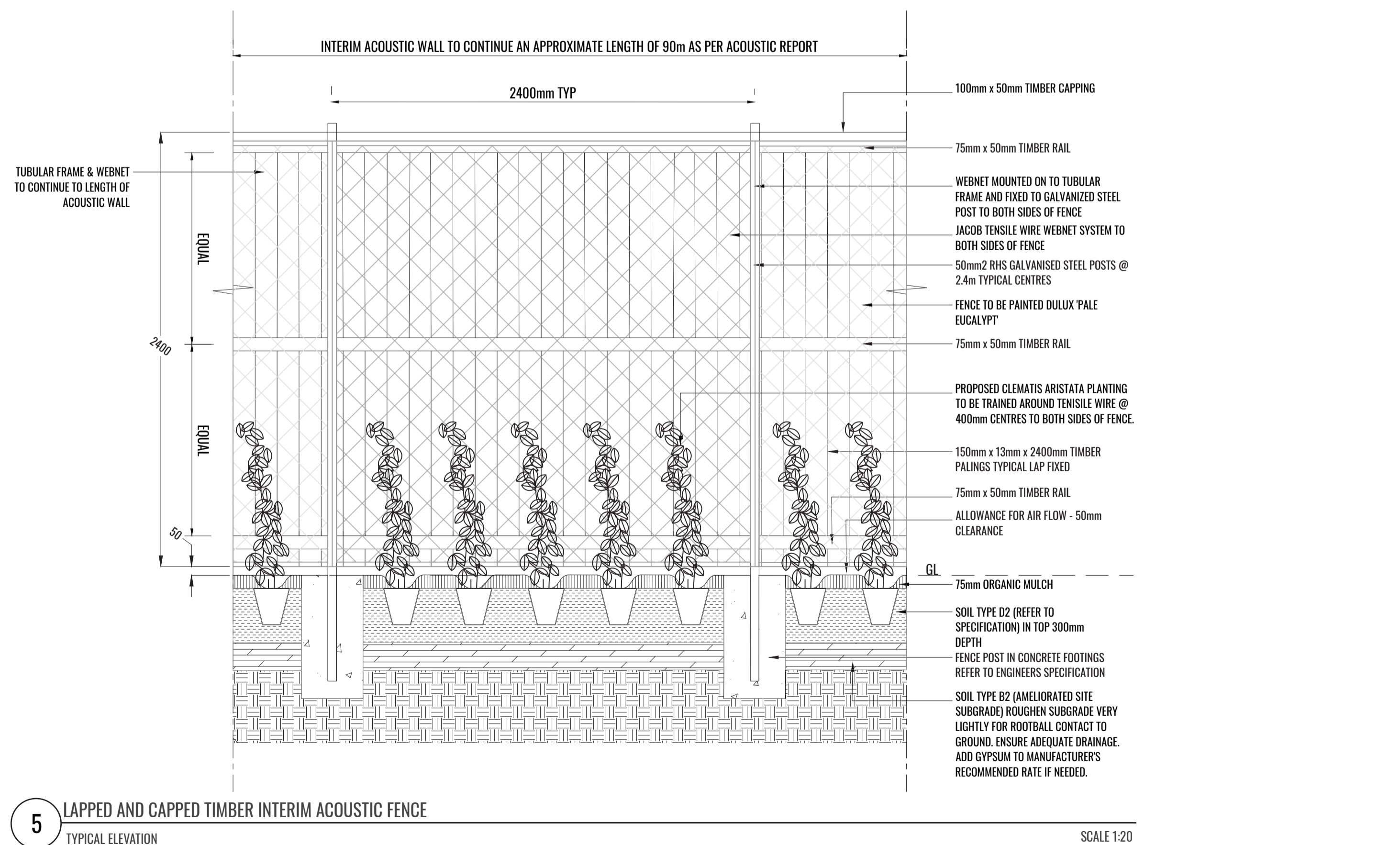
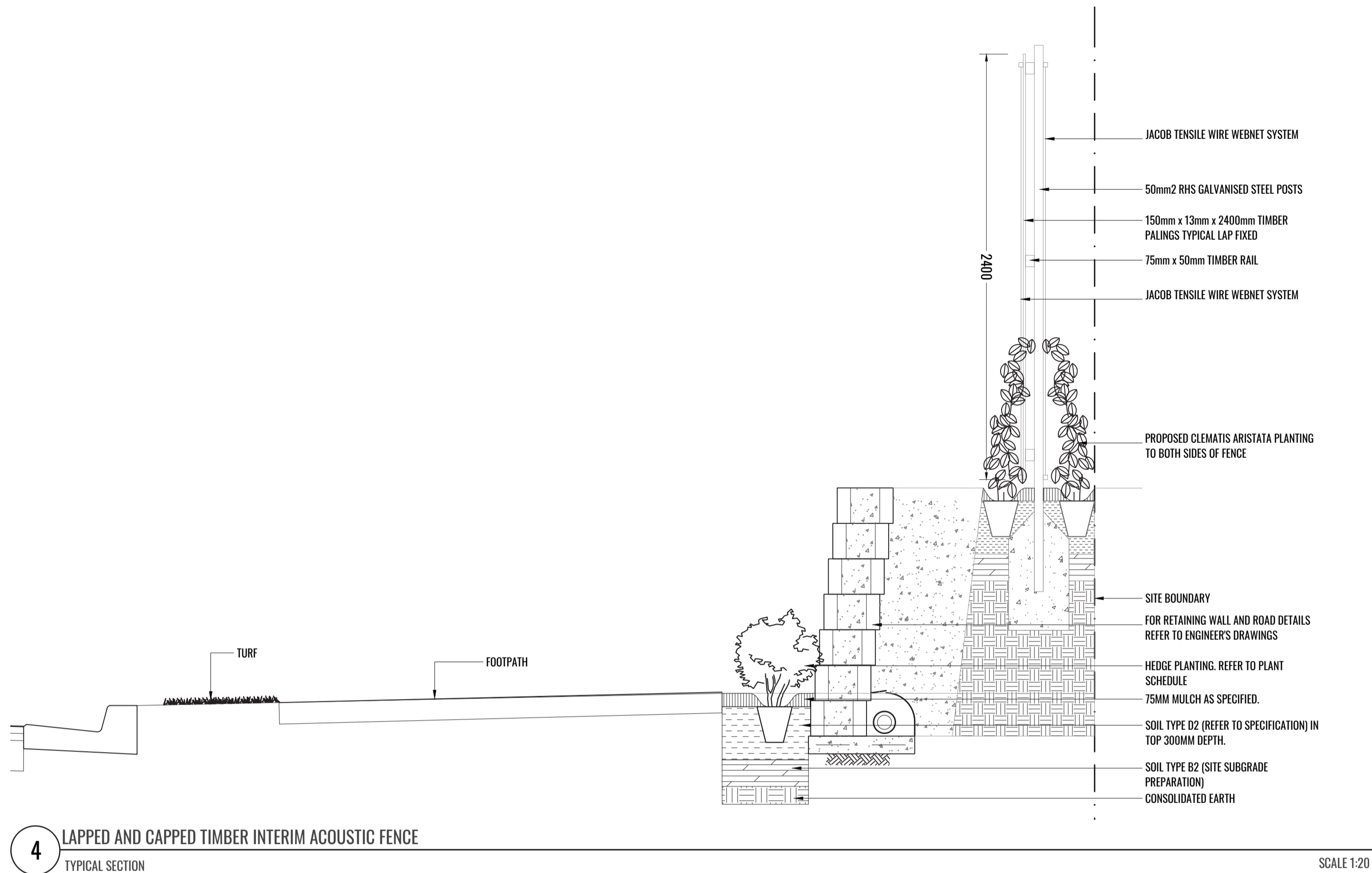
GEOSCAPES
LANDSCAPE ARCHITECTS
Suite 215, 284 Victoria Ave, Chatswood NSW 2067 Ph. (02) 9411 1485
www.geoscapes.com.au
ABN 84 620 205 781 ACN 620 205 781

Architect:
nettleontribe

Client:
ALTIS
PROPERTY PARTNERS

Scale:	Date:	Job Number:	North:	Revision	FOR STATE SIGNIFICANT DEVELOPMENT APPLICATION			
	01.09.21	200827		Rev	Date	Description	Drawn	Checked
Project:	884-928 Mamre Road Kemps Creek, NSW			C	16.07.21	FOR SSD	KC	BG
				D	19.07.21	FOR SSD	KC	BG
				E	24.08.21	FOR SSD	KC	BG
				F	01.09.21	FOR SSD	KC	BG

TYPICAL LANDSCAPE DETAILS



MAINTENANCE PLAN

Maintenance shall mean the care and maintenance of the landscape works by accepted horticultural practice as rectifying any defects that become apparent in the landscape works under normal use. The landscape contractor shall attend the site on a **weekly basis** to maintain the landscape works commencing from practical completion.

Rubbish Removal

The Landscape Contractor shall undertake rubbish removal from the site on a **weekly basis** to ensure the site remains in tidy condition.

Weed Eradication

Weed growth that may occur in grassed, planted or mulched areas is to be removed using environmentally acceptable methods i.e. non-residual glyphosate herbicide (e.g. 'Roundup', applied in accordance with the manufacturer's direction.

Tree Replacement

Trees shall show signs of healthy vigorous growth and be free from disease and not exhibit signs of stress prior to handover to the client. Any trees or plant that die or fail to thrive, or are damaged or stolen will be replaced. Replacement material shall have the initial maintenance period extended in accordance with the landscape contract conditions. Trees and plant materials shall be equal to the minimum requirements of species specified and approved material delivered to site. Should the condition decline from the approved sample the Superintendent reserves the right to reject the tree / plants.

Frequency: as required.

Stakes

Adjust and/or replace stakes and ties where required. Remove staking and guying when instructed by the Superintendent

Pruning

Selective pruning may be required during the establishment period to promote a balanced canopy structure. These activities shall be carried out to the best horticultural and industry practice. All pruned material is to be removed from site.

Mulched Surfaces

All planter beds and garden areas shall have a minimum depth of 75mm organic mulch. All mulch is to be free of deleterious matter such as soil, weeds, sticks and should conform to AS 4454.

Mulched surfaces are to be kept clean and tidy and free of any deleterious material and foreign matter. Reinstall depths to a uniform level of 75mm with mulch as specified, mulch to be free of any wood material impregnated with CCA or similar toxic treatment. Top up mulch levels prior to handover to client & estate management.

Watering

Implement an appropriate hand watering regime in areas not irrigated in association with current watering programme to maintain plant health and vigour. The program shall reflect seasonal conditions and plant species.

Frequency: Weekly or as required.

Soil In Natural Ground

Non-Australian native garden beds to have soil installed consisting of 50% existing site topsoil and 50% new topsoil equal or equivalent to 'Organic Garden Mix' as supplied by Australian Native Landscapes. Australian native garden beds to have soil installed consisting of 50% existing site topsoil and 50% new topsoil equal or equivalent to 'Native Low 'P' Mix' as supplied by Australian Native Landscapes. Soil to conform to AS4419 refer to typical detail.

Pest and Disease Control

The Landscape Contractor shall spray for pests and disease infestations when the pest and fungal attack has been positively identified and when their populations have increased to a point that will become detrimental to plant growth. Apply all pesticides to manufacturer's directions.

Frequency: weekly inspection

Fertilising

Generally check for signs of nutrient deficiencies (yellowing of leaves, failure to thrive), and adapt fertiliser regime to suit. Fertiliser should be applied at the beginning and the end of the (summer) growing season.

Irrigation

A sub surface dripper style, electrically automated self timed irrigation system is recommended to be supplied to all garden bed areas. Regular checks are to be made to ensure continued successful operation. The Landscape Contractor shall be responsible for coordination and engagement of a specialist irrigation designer and installation contractor to design, supply and install an automatic subterranean drip irrigation system to all raised planter beds.

The irrigation system will need to provide designated landscaped areas with enough water for vigorous healthy plant growth. As a general rule landscaped areas will need 20-25mm, species dependant, of water per week. The landscape Contractor will need to monitor natural rainfall using a rain switch in order to set irrigation flow rates accordingly on a monthly basis.

Standards

All grown or purchased plant stock must conform to all the conditions and requirements given in NATSPEC Guide: Specifying Trees. Soils to be in accordance with AS4419, mulching composts and conditioners to be in accordance with AS4454. Soils should conform to best practice specifications as listed in the Landscape Soils Handbook (Simon Leake & Elke Haege 2017).

Drawing Title:
Specification & Typical Details
DWG No:
LDA-09

GEOSCAPES
LANDSCAPE ARCHITECTS
Suite 215, 284 Victoria Ave, Chatswood NSW 2067 Ph. (02) 9411 1485
www.geoscapes.com.au
ABN 84 620 205 781 ACN 620 205 781

Architect:
nettleontribe

Client:
ALTIS
PROPERTY PARTNERS

Scale:	Date:	Job Number:	North:	Revision	FOR STATE SIGNIFICANT DEVELOPMENT APPLICATION			
As Shown @ A1	01.09.21	200827	N.A.	Rev	Date	Description	Drawn	Checked
Project:	884-928 Mamre Road Kemps Creek, NSW			C	16.07.21	FOR SSD	KC	BG
				D	19.07.21	FOR SSD	KC	BG
				E	24.08.21	FOR SSD	KC	BG
				F	01.09.21	FOR SSD	KC	BG

PLANTING SCHEDULE

Code	Botanical Name	Common Name	Mature Height	Spacing	Pot Size	Quantity*
Trees						
BET NIG	<i>Betula nigra</i>	River Birch	12m	As shown	100L	18
CUP ANA	<i>Cupaniopsis anacardioides</i>	Tuckeroo	10m	As shown	100L	66
ELA RET	<i>Elaeocarpus reticulatus</i> 'Prima Donna'	Blueberry Ash	10m	As shown	100L	24
FIC HIL	<i>Ficus microcarpa hillii</i>	Weeping Fig	10m	As shown	100L	1
TRI LAU	<i>Tristaniopsis laurina</i>	Water Gum	12m	As shown	100L	72
WAT FLO	<i>Waterhousea floribunda</i>	Weeping Lilly Pilly	10m	As shown	100L	91
Shrubs						
BRE obl	<i>Breynia oblongifolia</i>	Coffee Bush	3m	As shown	200mm	62
CAL lit	<i>Callistemon viminalis</i> 'Little John'	Bottlebrush	0.75m	As shown	200mm	28
DAV uli	<i>Daviesia ulicifolia</i>	Gorse Bitter-Pea	2m	As shown	200mm	61
DIL jun	<i>Dillwynia juniperina</i>	Prickly Parrot-Pea	3m	As shown	200mm	49
DOD vis	<i>Dodonea viscosa subsp. viscosa</i>	Sticky Hop Bush	3m	As shown	200mm	44
DOR exc	<i>Doryanthes excelsa</i>	Gymea Lily	3m	As shown	200mm	25
HAK ser	<i>Hakea sericea</i>	Needle Bush	7m	As shown	200mm	52
IND aus	<i>Indigofera australis</i>	Native Indigo	4m	As shown	200mm	47
OZO dio	<i>Ozothamnus diosmifolius</i>	Rice Flower	2.5m	As shown	200mm	44
PIT gol	<i>Pittosporum tenuifolium</i> 'Golfball'	Dwarf Pittosporum	0.4m	As shown	200mm	20
SYZ aus	<i>Syzygium australe</i> 'Tiny Trev'	Lilly Pilly	0.7-1m	0.5m Ctrs	200mm	198
WES gre	<i>Westringia fruticosa</i> 'Grey Box'™	Native Rosemary	0.45m	As shown	200mm	35
WES mun	<i>Westringia fruticosa</i> 'Mundi'	Native Rosemary	0.4m	6/m2	200mm	375
Grasses + Groundcover						
CAR ros	<i>Carpobrotus glaucescens</i>	Native Pigface	0.3m	3/m2	140mm	802
DIA lon	<i>Dianella longifolia</i>	Blue Flax Lily	0.5m	5/m2	Tubestock	1445
DIA rev	<i>Dianella revoluta</i>	Flax Lily	0.5m	5/m2	Tubestock	1679
DIC rep	<i>Dichondra repens</i>	Kidney Plant	0.1m	3/m2	140mm	709
ERE blu	<i>Eremophila</i> 'Blue Horizon'	Emu Bush	0.25m	3/m2	140mm	78
GAZ tom	<i>Gazania tomentosa</i>	Gazania	0.3m	8/m2	140mm	325
HAR vio	<i>Hardenbergia violacea</i> 'Mini Meema'	Hardenbergia Meema	0.45m	3/m2	140mm	256
LOM tan	<i>Lomandra longifolia</i> 'Tanika'	Mat Rush	0.6m	5/m2	Tubestock	2004
MYO par	<i>Myoporum parvifolium</i> 'Yareena'	Creeping Boobialla	0.2m	3/m2	140mm	203
PEN alo	<i>Pennisetum alopecuroides</i> 'Nafray'	Nafray	0.7m	5/m2	Tubestock	623
SCA alb	<i>Scaevola albida</i>	Fan Flower	0.2m	4/m2	140mm	225
SEN ser	<i>Senecio serpens</i>	Blue Chalksticks	0.3m	3/m2	140mm	242
WES low	<i>Westringia fruticosa</i> 'Low Horizon'™	Low Horizon Westringia	0.3m	3/m2	140mm	442
Vines/Climbers						
CLE ari	<i>Clematis aristata</i>	Goat's Beard	2m	0.4m Ctrs	Tubestock	672
Bio-Retention & OSD Basin Planting						
CAR app	<i>Carex appressa</i>	Tussock Sedge	1.0m	8m2	Tubestock	4156
DIA car	<i>Dianella caerulea</i>	Blue Flax Lily	0.7m	8m2	Tubestock	4156
FIC nod	<i>Ficinia nodosa</i>	Knobby Club-Rush	1.2m	8m2	Tubestock	4156
IMP cyl	<i>Imperata cylindrica</i>	Blady Grass	1.0m	8m2	Tubestock	4156
JUN usi	<i>Juncus usitatus</i>	Common Rush	1.2m	8m2	Tubestock	4156
LOM lon	<i>Lomandra longifolia</i>	Mat Rush	1.0m	8m2	Tubestock	4156
POA sib	<i>Poa sieberiana</i>	Grey Tussock Grass	0.8m	8m2	Tubestock	4156
THE aus	<i>Themeda australis</i>	Kangaroo Grass	1.5m	8m2	Tubestock	4156

*Plant numbers to be finalised at Detailed Design / CC-Tender stage

PLANT IMAGES



A. *Betula nigra* B. *Eremophila* 'Blue Horizon' C. *Ozothamnus diosmifolius* D. *Callistemon viminalis* 'Little John' E. *Hakea sericea* F. *Indigofera australis* G. *Westringia fruticosa* 'Mundi' H. *Carpobrotus glaucescens* I. *Tristaniopsis laurina* J. *Hardenbergia violacea* 'Mini Meema' K. *Scaevola albida* L. *Elaeocarpus reticulatus* 'Prima Donna' M. *Westringia fruticosa* 'Low Horizon'™ N. *Ficinia nodosa* O. *Juncus usitatus* P. *Ficus microcarpa hillii*

Drawing Title:
Indicative Planting Schedule & Imagery
 DWG No: **LDA-10**

GEOSCAPES
 LANDSCAPE ARCHITECTS
 Suite 215, 284 Victoria Ave, Chatswood NSW 2067 Ph. (02) 9411 1485
 www.geoscapes.com.au
 ABN 84 620 205 781 ACN 620 205 781

Architect:

Client:

Scale:	Date:	Job Number:	North:	Revision	FOR STATE SIGNIFICANT DEVELOPMENT APPLICATION			
N.A.	01.09.21	200827	N.A.	Rev	Date	Description	Drawn	Checked
				D	16.07.21	FOR SSD	KC	BG
				E	19.07.21	FOR SSD	KC	BG
				F	24.08.21	FOR SSD	KC	BG
				G	01.09.21	FOR SSD	KC	BG

Project: 884-928 Mamre Road
 Kemps Creek, NSW