

O C U L U S

SSDA LANDSCAPE DRAWINGS

DRAWING SCHEDULE				
Sheet Number	Sheet Name	Current Revision Date	Current Revision	Drawing Series
L000				
L000	COVER SHEET	21.09.21	1	L000
L002	MATERIALS SCHEDULE	21.09.21	1	L000
L004	OVERALL SITE PLAN	21.09.21	1	L000
L005	SITE PLAN LEVEL 00	21.09.21	1	L000
L006	SITE PLAN LEVEL 1	21.09.21	1	L000
L007	SITE PLAN LEVEL 2	21.09.21	1	L000
L008	SITE PLAN LEVEL 3	21.09.21	1	L000
L009	SITE PLAN LEVEL 4	21.09.21	2	L000
L100				
L100	TREE RETENTION AND DEMOLITION PLAN	21.09.21	1	L100
L200				
L200	SURFACES AND FINISHES - LEVEL 0	21.09.21	1	L200
L201	SURFACES AND FINISHES - LEVEL 1	21.09.21	1	L200
L202	SURFACES AND FINISHES - LEVEL 2	21.09.21	1	L200
L203	SURFACES AND FINISHES - LEVEL 3	21.09.21	1	L200
L204	SURFACES AND FINISHES - LEVEL 4	21.09.21	1	L200
L500				
L500	TREE PLANTING PLAN	21.09.21	1	L500
L700				
L700	SECTIONS SETOUT PLAN	21.09.21	1	L700
L701	SECTIONS	21.09.21	1	L700
L702	SECTIONS	21.09.21	1	L700
L703	SECTIONS	21.09.21	1	L700
L704	SECTIONS	21.09.21	1	L700
L705	SECTIONS	21.09.21	1	L700



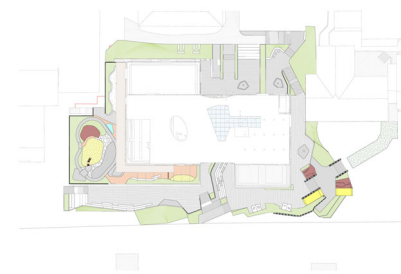
NOTES

THESE DRAWINGS ARE TO BE READ IN CONJUNCTION WITH ALL LANDSCAPE SCHEDULES AND TECHNICAL SPECIFICATION AND OTHER CONSULTANTS' DRAWINGS. CHECK AND VERIFY ALL DIMENSIONS AND SITE CONDITIONS PRIOR TO THE COMMENCEMENT OF ANY WORK. DO NOT SCALE DRAWINGS - REFER TO FIGURED DIMENSIONS ONLY. INFORM OCULUS OF ANY DISCREPANCIES FOR CLARIFICATION BEFORE PROCEEDING. UNLESS NOTED OTHERWISE THIS DRAWING IS NOT FOR CONSTRUCTION.

© OCULUS 2017 All rights reserved



SERVICES SHOWN ON THIS DRAWING ARE APPROXIMATELY ONLY. THE EXACT LOCATION IS TO BE CONFIRMED ON SITE BY CONTRACTOR PRIOR TO COMMENCEMENT WORK.



ISSUE	DATE	AMENDMENT	DRN	APRVD
1	21.09.21	Issued for SSDA	AK	RB

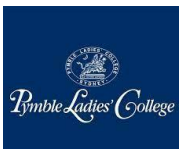
O C U L U S

Level 1, 5 Wilson Street, p.o. box 307, Newtown, 2042
p 03.9670.0699 australia@oculus.info
MELBOURNE SYDNEY WASHINGTON

PROJECT
Pymble Ladies College - Grey House Precinct
Avon Road, Pymble NSW

CLIENT
Pymble Ladies College

ARCHITECT
BVN Architecture
255 Pitt Street, Sydney NSW



STATUS
SSDA - CONCEPT DESIGN

DRAWING TITLE

COVER SHEET

PROJECT N^o
S21-015

SHEET SIZE
A1

DRAWING N^o
L000

ISSUE
1

PAVING					
CODE	MATERIAL	DESCRIPTION	FINISH	CONTROL SAMPLE	TESTING REQUIREMENTS
PV01	BLUESTONE PAVER, 600x400x30	LARGE UNIT NATURAL STONE, FORMAL PATTERN	EXFOLIATED		
PV02	BLUESTONE PAVER, 200x200x30	SMALL UNIT NATURAL STONE FORMAL PATTERN	EXFOLIATED		
PV03	BLUESTONE PAVER, 300x200x30	MEDIUM UNIT NATURAL STONE, FORMAL PATTERN	EXFOLIATED		
PV04	GRANITE PAVER, 300x200x30	MEDIUM UNIT NATURAL STONE, IRREGULAR PATTERN	EXFOLIATED		
PV05	SANDSTONE	MIXED SIZES, CRAZY PAVE	SAWN		
PV06	RECYCLED BRICK	FEATURE PAVING TRACK			
PV07	CRUSHED ROCK	CRUSHED ROCK SERVICE ROAD			
PV08	ENDICOTT STONE	NATURAL SPLIT STONE MIXED SIZES, CRAZY PAVE	NATURAL SPLIT		
PV09	TIMBER DECK	RECYCLED HARDWOOD TIMBER DECK	WIRE BRUSHED		
PV10	RIVER PEBBLES	WASHED PEBBLES			
PV11	SANDSTONE STEEPING STONE	MIXED SIZES	NATURAL SPLIT		
PV12	SOFTFALL	WETPOUR RUBBER SURFACING			
PV13	SKYLIGHT	RAISED SKYLIGHTS WITH GLAZING			

WALLS AND EDGES					
CODE	MATERIAL	DESCRIPTION	FINISH	CONTROL SAMPLE	TESTING REQUIREMENTS
ED02	SANSTONE LOG	200mm WIDE SANDSTONE LOG EDGING			
PP01	GRC PLANT POTS	PLANT POTS VARIOUS SIZES			
WA01	RECYCLED BRICK WALL	BRICK RETAINING WALL			
WA02	SANDSTONE BLOCK	600mm WIDE SANDSTONE SEATING WALL			
WA03	RAMMED EARTH				
WA04	PRECAST CONCRETE SEATING WALLS	PRECAST CONCRETE TERRACE WALLS WITH BRICK FACING			
WA05	SANSTONE WALL	200mm CONCRETE BLOCK WITH SANDSTONE CLADDING			
WA06	STEEL CLAD BLOCKWORD WALL	5mm PAINTED MILD STEEL CLADDING TO 190mm CORE-FILLED BLOCK WORK WALL			
WA07					
WA08	BRICK CLAD WALL WITH TIMBER TOP	600mm WIDE BRICK CLAD WALL WITH TIMBER TOP			
WA09	CORTEN PLANTER WALL	5mm CORTEN CLADDING TO 190mm CORE-FILLED BLOCK WORK WALL			

STAIRS					
CODE	MATERIAL	DESCRIPTION	FINISH	CONTROL SAMPLE	TESTING REQUIREMENTS
ST01	PRECAST CONCRETE STAIRS	PRECAST CONCRETE STAIRS			
ST02	SANDSTONE STAIRS	SANDSTONE LOG STAIRS			
ST03	SANDSTONE FLAG STAIRS	IRREGULAR SANDSTONE FLAG STAIRS			
TGSI01	STAINLESS STEEL STUDS	TACTILE GROUNDSURFACE INDICATOR STUDS			

BALUSTRADES, HANDRAILS & FENCES					
CODE	MATERIAL	DESCRIPTION	FINISH	CONTROL SAMPLE	TESTING REQUIREMENTS
BA01	TIMBER BATTEN BALUSTRADE	TIMBER BATTENS AND STEEL BALUSTRADE			
BA02	TIMBER POSTS AND MESH BALUSTRADE	TIMBER POSTS WITH STEEL MESH INFILL			
FE01	PLAYGROUND FENCE	MOVEABLE PLAYGROUND FENCE			
HR01					

FURNITURE SCHEDULE					
CODE	MATERIAL	DESCRIPTION	FINISH	CONTROL SAMPLE	TESTING REQUIREMENTS
FN01	TIMBER STORAGE CUPBOARD	OUTDOOR STORAGE CUPBOARD			
FN02					
FN04	TIMBER LOUNGE BENCH	TIMBER BENCH WITH CURVED END			
FN05	WATER FEATURE	METAL BOWL WATER FEATURE			
FN06	BAR STOOL	TIMBER BAR STOOL			

SHADE STRUCTURES					
CODE	MATERIAL	DESCRIPTION	FINISH	CONTROL SAMPLE	TESTING REQUIREMENTS
SS01	TIMBER STRUCTURE	TIMBER PLAYHOUSE STRUCTURE			
SS02	TIMBER STRUCTURE	TIMBER SHADE CANOPY			
SS03	STEEL SHADE STRUCTURE	PERFORATED STEEL SHADE STRUCTURE			

PLAYGROUND ELEMENTS					
CODE	MATERIAL	DESCRIPTION	FINISH	CONTROL SAMPLE	TESTING REQUIREMENTS
PE01	SLIDE	SPIRAL SLIDE			
PE03	TIMBER STEPPER	TIMBER LOG STEPPERS VARYING HEIGHTS			
PE04	TIMBER LOG	ROUND TIMBER LOG			
PE05	TIMBER LOG FLAT	TIMBER LOG WITH FLAT FACE			
PE07	CLIMBING HOLD	RUBBER CLIMBING HOLDS			
PE08					
PE09	TIMBER BRIDGE TODDLER	SMALL ARCHED TIMBER BRIDGE			
PE10	TIMBER BRIDGE	LARGE TIMBER BRIDGE WITH BALUSTRADE			
PE11	TIMBER POSTS AND NETS	CLIMBING NETS AND TIMBER POSTS			
PE12	LARGE TIMBER POSTS	MULTIFUNCTIONAL TIMBER POSTS			

LANDSCAPE ELEMENTS					
CODE	MATERIAL	DESCRIPTION	FINISH	CONTROL SAMPLE	TESTING REQUIREMENTS
BO01	SANDSTONE BOULDER	LARGE SANDSTONE BOULDER			
BO02	SANDSTONE BOULDER	MEDIUM SANDSTONE BOULDER			
BO03	SANDSTONE BOULDER	SMALL SANDSTONE BOULDER			

SOFTWORKS					
CODE	MATERIAL	DESCRIPTION	FINISH	CONTROL SAMPLE	TESTING REQUIREMENTS
MP01	MASS PLANTING	MASS PLANTING ON GRADE			
MP02	MASS PLANTING	PLANTING ON STRUCTURE			
SL01	PLAYGROUND SAND	SYDNEY SAND			
SL02	BARK MULCH	SHREDDED CEDAR MULCH			
TF01	NATURAL TURF	TURF ON NATURAL GRADE WITH CULTIVATED SUBGRADE PLANTED WITH LOW COVER PLANTS AS DETAILED AND SPECIFIED			

NOTES


THESE DRAWINGS ARE TO BE READ IN CONJUNCTION WITH ALL LANDSCAPE SCHEDULES AND TECHNICAL SPECIFICATION AND OTHER CONSULTANTS' DRAWINGS. CHECK AND VERIFY ALL DIMENSIONS AND SITE CONDITIONS PRIOR TO THE COMMENCEMENT OF ANY WORK. DO NOT SCALE DRAWINGS - REFER TO FIGURED DIMENSIONS ONLY. INFORM OCULUS OF ANY DISCREPANCIES FOR CLARIFICATION BEFORE PROCEEDING. UNLESS NOTED OTHERWISE THIS DRAWING IS NOT FOR CONSTRUCTION.

© OCULUS 2017 All rights reserved

DIAL BEFORE YOU DIG

www.1100.com.au

SERVICES SHOWN ON THIS DRAWING ARE APPROXIMATELY ONLY. THE EXACT LOCATION IS TO BE CONFIRMED ON SITE BY CONTRACTOR PRIOR TO COMMENCEMENT WORK.



ISSUE	DATE	AMENDMENT	DRN	APRVD
1	21.09.21	Issued for SSDA	AK	RB

O C U L U S

Level 1, 5 Wilson Street, p.o. box 307, Newtown, 2042
p 03.9670.0699 australia@oculus.info
MELBOURNE SYDNEY WASHINGTON

PROJECT


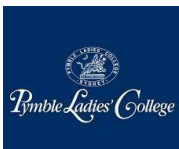
Pymble Ladies College - Grey House Precinct
Avon Road, Pymble NSW

CLIENT

Pymble Ladies College

ARCHITECT

BVN Architecture
255 Pitt Street, Sydney NSW



STATUS

SSDA - CONCEPT DESIGN

DRAWING TITLE

MATERIALS SCHEDULE

PROJECT N^o

S21-015

SHEET SIZE

A1

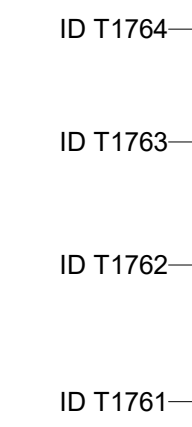
DRAWING N^o

L002

ISSUE

1

C:\Users\liz\Documents\OC_LA_PLC Grey House Precinct_R20_liz@oculus_SSDA_rvt



THESE DRAWINGS ARE TO BE READ IN CONJUNCTION WITH ALL LANDSCAPE SCHEDULES AND TECHNICAL SPECIFICATION AND OTHER CONSULTANTS DRAWINGS. CHECK AND VERIFY ALL DIMENSIONS AND SITE CONDITIONS PRIOR TO THE COMMENCEMENT OF ANY WORK. DO NOT SCALE DRAWINGS - REFER TO FIGURED DIMENSIONS ONLY. INFORM OCULUS OF ANY DISCREPANCIES FOR CLARIFICATION BEFORE PROCEEDING. UNLESS NOTED OTHERWISE THIS DRAWING IS NOT FOR CONSTRUCTION.




**DIAL BEFORE
YOU DIG**
www.1100.com.au

SERVICES SHOWN ON THIS DRAWING ARE APPROXIMATELY ONLY. THE EXACT LOCATION IS TO BE CONFIRMED ON SITE BY CONTRACTOR PRIOR TO COMMENCEMENT WORK.

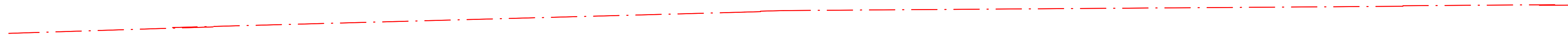
[illegible]

Level 1, 5 Wilson Street, p.o. box 307, Newtown, 2042
p 03.9670.0699 australia@oculus.info
MELBOURNE SYDNEY WASHINGTON



Pymble Ladies' College

DRAWING N°
L100ISSUE
1

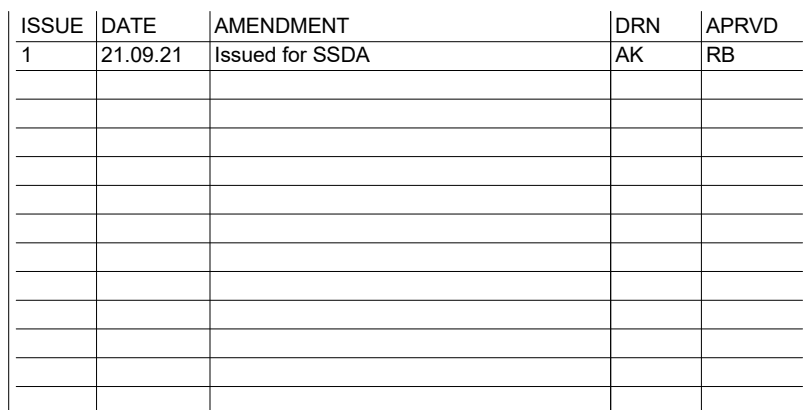


THESE DRAWINGS ARE TO BE READ IN CONJUNCTION WITH ALL LANDSCAPE SCHEDULES AND TECHNICAL SPECIFICATION AND OTHER CONSULTANTS DRAWINGS. CHECK AND VERIFY ALL DIMENSIONS AND SITE CONDITIONS PRIOR TO THE COMMENCEMENT OF ANY WORK. DO NOT SCALE DRAWINGS - REFER TO FIGURED DIMENSIONS ONLY. INFORM OCULUS OF ANY DISCREPANCIES FOR CLARIFICATION BEFORE PROCEEDING. UNLESS NOTED OTHERWISE THIS DRAWING IS NOT FOR CONSTRUCTION.



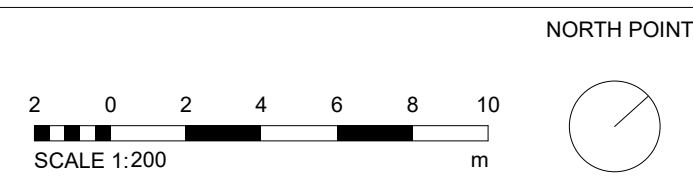
**DIAL BEFORE
YOU DIG**
www.1100.com.au

SERVICES SHOWN ON THIS DRAWING ARE APPROXIMATELY ONLY. THE EXACT LOCATION IS TO BE CONFIRMED ON SITE BY CONTRACTOR PRIOR TO COMMENCEMENT WORK.



Level 1, 5 Wilson Street, p.o. box 307, Newtown, 2042
p 03.9670.0699 australia@oculus.info
MELBOURNE SYDNEY WASHINGTON

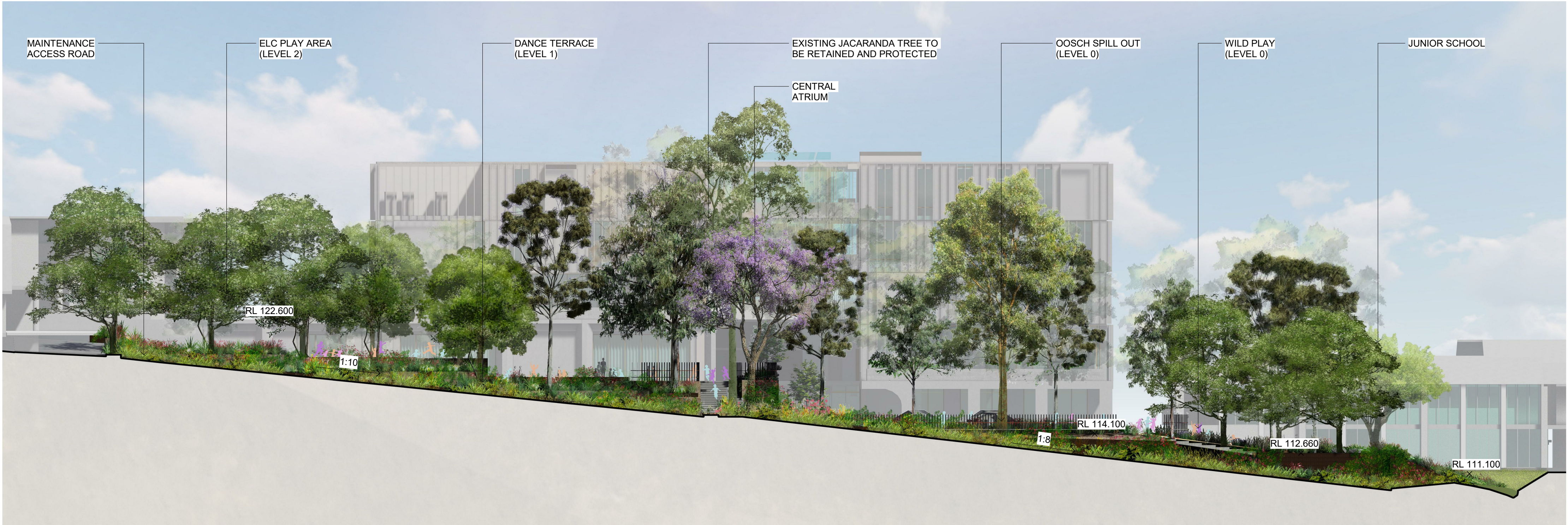
ARCHITECT
BVN Architecture
255 Pitt Street, Sydney NSW



PROJECT N° S21-015	SHEET SIZE A1
DRAWING N° L203	ISSUE 1



PROJECT N° S21-015	SHEET SIZE A1
DRAWING N° L204	ISSUE 1

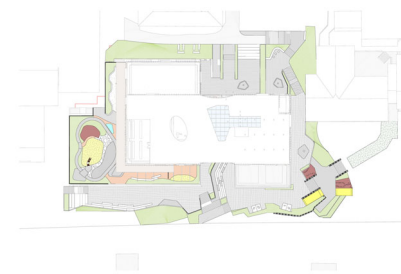


1 SOUTHERN BOUNDARY - SECTIONAL ELEVATION
L700 1 : 200



2 SOUTH PRECINCT - SECTIONAL ELEVATION
L700 1 : 200

NOTES
THESE DRAWINGS ARE TO BE READ IN CONJUNCTION WITH ALL LANDSCAPE SCHEDULES AND TECHNICAL SPECIFICATION AND OTHER CONSULTANTS' DRAWINGS. CHECK AND VERIFY ALL DIMENSIONS AND SITE CONDITIONS PRIOR TO THE COMMENCEMENT OF ANY WORK. DO NOT SCALE DRAWINGS - REFER TO FIGURED DIMENSIONS ONLY. INFORM OCULUS OF ANY DISCREPANCIES FOR CLARIFICATION BEFORE PROCEEDING. UNLESS NOTED OTHERWISE THIS DRAWING IS NOT FOR CONSTRUCTION.



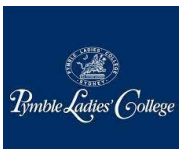
ISSUE	DATE	AMENDMENT	DRN	APRVD
1	21.09.21	Issued for SSDA	AK	RB

OCULUS
Level 1, 5 Wilson Street, p.o. box 307, Newtown, 2042
p 03.9670.0699 australia@oculus.info
MELBOURNE SYDNEY WASHINGTON

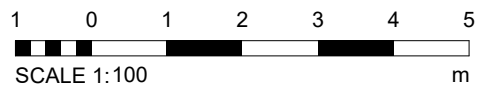
PROJECT
Pymble Ladies College - Grey House Precinct
Avon Road, Pymble NSW

CLIENT
Pymble Ladies College

ARCHITECT
BVN Architecture
255 Pitt Street, Sydney NSW

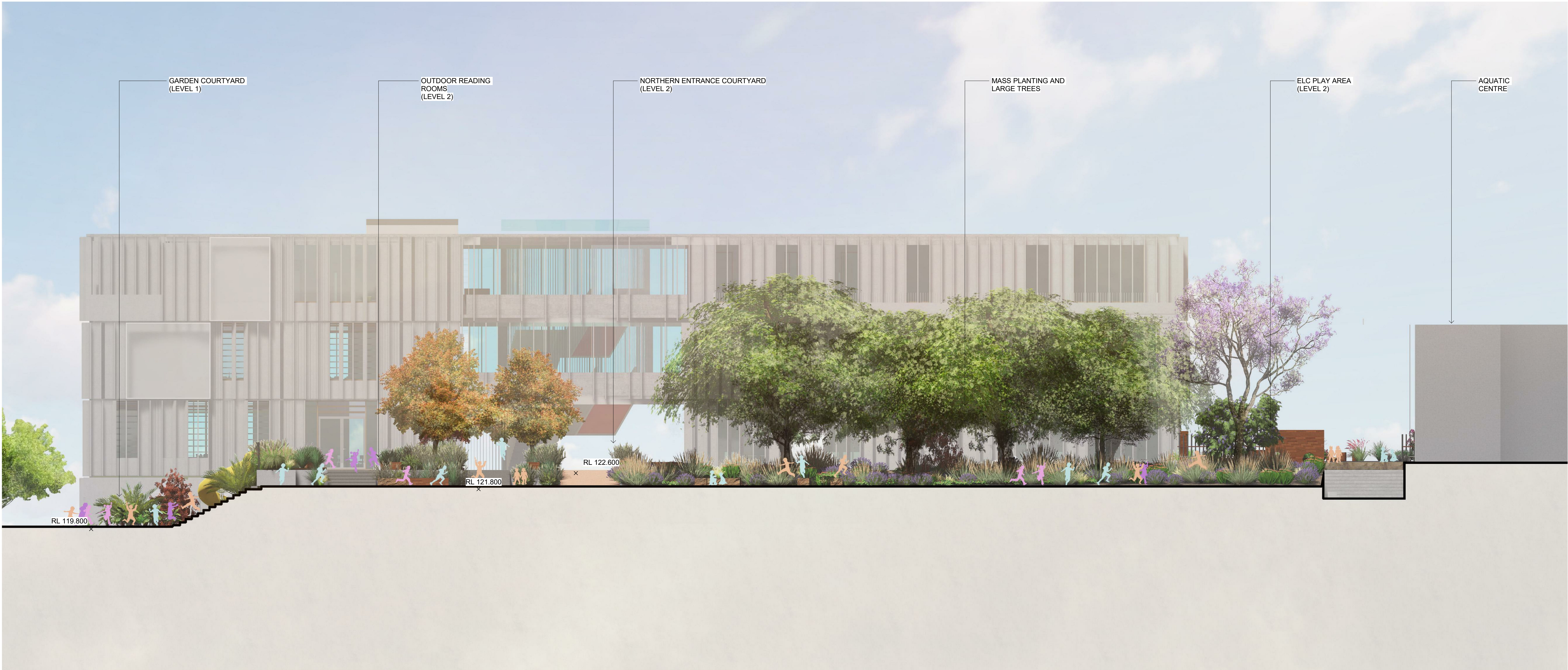


STATUS
SSDA - CONCEPT DESIGN



DRAWING TITLE
SECTIONS

PROJECT N ^o S21-015	SHEET SIZE A1
DRAWING N ^o L701	ISSUE 1



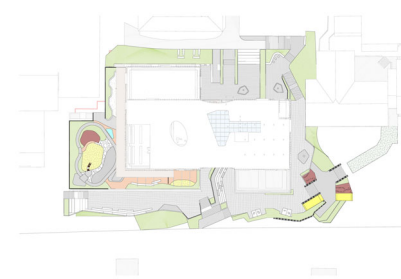
2 NORTHERN ENTRY - SECTION
L700 1 : 100

NOTES
THESE DRAWINGS ARE TO BE READ IN CONJUNCTION WITH ALL LANDSCAPE SCHEDULES AND TECHNICAL SPECIFICATION AND OTHER CONSULTANTS' DRAWINGS. CHECK AND VERIFY ALL DIMENSIONS AND SITE CONDITIONS PRIOR TO THE COMMENCEMENT OF ANY WORK. DO NOT SCALE DRAWINGS - REFER TO FIGURED DIMENSIONS ONLY. INFORM OCULUS OF ANY DISCREPANCIES FOR CLARIFICATION BEFORE PROCEEDING. UNLESS NOTED OTHERWISE THIS DRAWING IS NOT FOR CONSTRUCTION.

© OCULUS 2017 All rights reserved



SERVICES SHOWN ON THIS DRAWING ARE APPROXIMATELY ONLY. THE EXACT LOCATION IS TO BE CONFIRMED ON SITE BY CONTRACTOR PRIOR TO COMMENCEMENT WORK.



ISSUE	DATE	AMENDMENT	DRN	APRVD
1	21.09.21	Issued for SSDA	AK	RB

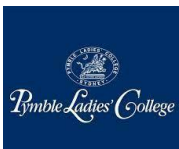
OCULUS

Level 1, 5 Wilson Street, p.o. box 307, Newtown, 2042
p 03.9670.0699 australia@oculus.info
MELBOURNE SYDNEY WASHINGTON

PROJECT
Pymble Ladies College - Grey House Precinct
Avon Road, Pymble NSW

CLIENT
Pymble Ladies College

ARCHITECT
BVN Architecture
255 Pitt Street, Sydney NSW



STATUS
SSDA - CONCEPT DESIGN

1 0 1 2 3 4 5
SCALE 1:100 m

DRAWING TITLE

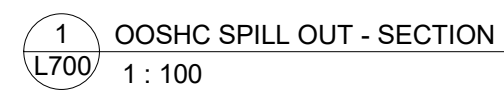
SECTIONS

PROJECT N^o
S21-015

SHEET SIZE
A1

DRAWING N^o
L703

ISSUE
1

ISSUE
1

