

1 First Floor Plan
1:500 @A0

ALL LEVELS AREA INDICATIVE AND SHOULD BE READ IN CONJUNCTION WITH CIVIL ENGINEERS DRAWINGS FOR FINAL LEVELS OF ALL EXISTING WORK.
ALL LEVELS SHOWN TO BE ±100mm

DEVELOPMENT APPLICATION



PROJECT: CHARTER HALL - HUNTINGWOOD
ADDRESS: Lot 1 DP866251
65 HUNTINGWOOD DRIVE
HUNTINGWOOD, NSW 2148
PROJECT NUMBER: 200810

Rev	Description	Date
P1	Preliminary Issue	19.08.21
A	External plant area added to Enabling Annex. Revised for SSD submission.	19.03.25

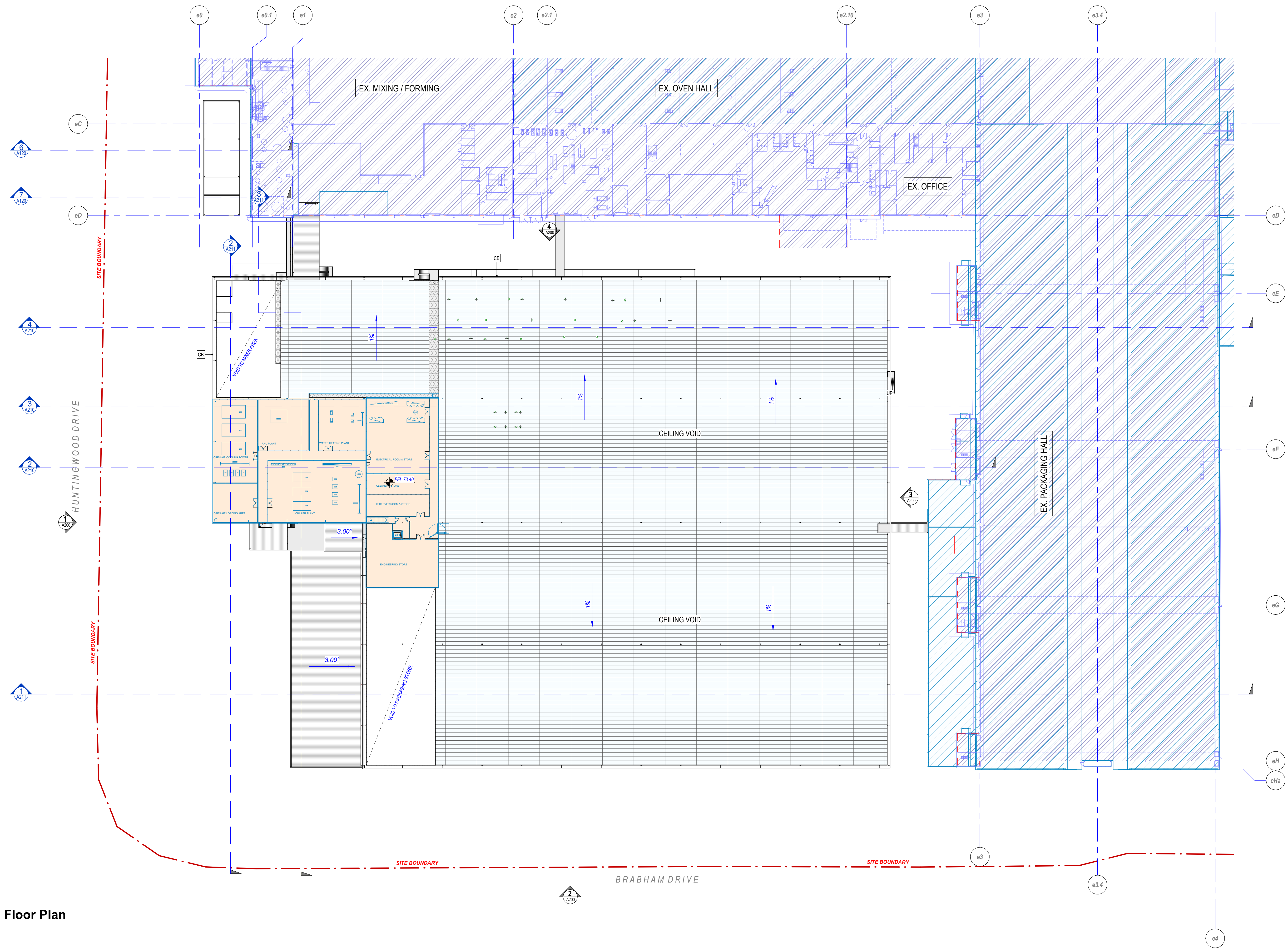
H/A Architects Pty Ltd. This drawing is confidential and is subject to copyright. It may not be copied, used, reproduced or transmitted in any way or in any form without the express permission of H/A Architects Pty Ltd.
General Notes:
Architectural drawings to be read in conjunction with all other consultants detailed drawings, specifications & reports.
Do not scale this drawing. Verify all dimensions on site.
Refer all discrepancies to H/A before commencing any work.

H/A Architects Pty Ltd A.C.N. 161 638 320
Incorporated in Australia
Registered Architect: Kola Hong (LAJ)
(Reg No. NSW #7359, QLD #0003)
e: admin@harchitects.com.au
t: 02 9169 9642
w: www.harchitects.com.au
a: Level 1, 5 George St, North Sydney NSW 2157



DRAWING TITLE: First Floor Plan (Amenities Level)
DRAWING NUMBER: 200810-AR-A104 -
DRAWN: AD
CHECKED: CH
ISSUED: HL

19/03/2025 11:45:11 AM \\server\docs\05_Grounding\05_Planet_Grounding.rvt



1 Second Floor Plan
1:500 @A0

ALL LEVELS AREA INDICATIVE AND SHOULD BE READ IN CONJUNCTION WITH CIVIL ENGINEERS DRAWINGS FOR FINAL LEVELS OF ALL EXISTING WORK.
ALL LEVELS SHOWN TO BE ±100mm

DEVELOPMENT APPLICATION



PROJECT CHARTER HALL - HUNTINGWOOD
ADDRESS Lot 1 DP866251
65 HUNTINGWOOD DRIVE
HUNTINGWOOD, NSW 2148
PROJECT NUMBER 200810

Rev	Description	Date
A	External plant area added to Enabling Annex. Revised for SSD submission.	19.03.25

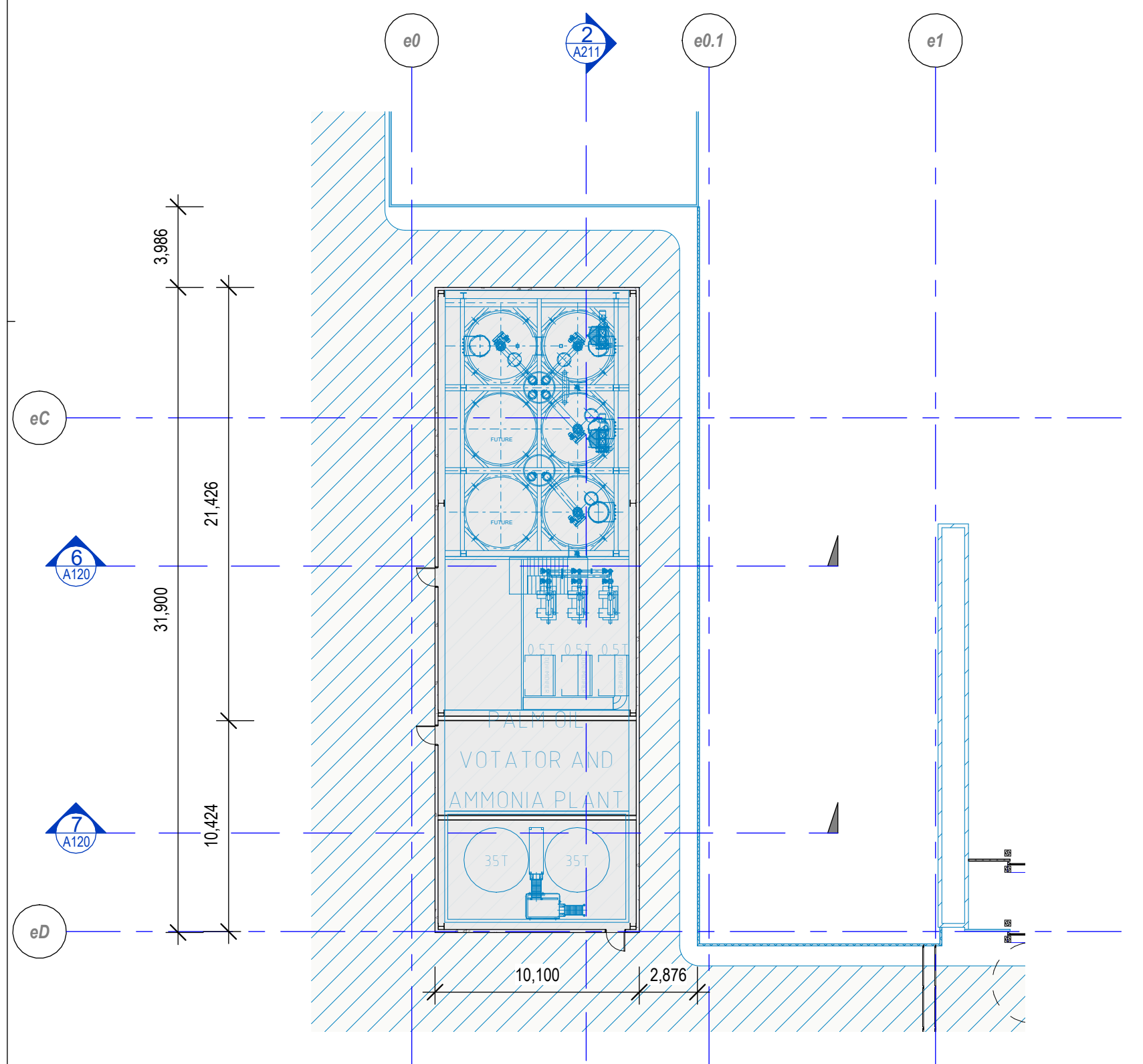
H/A Architects Pty Ltd. This drawing is confidential and is subject to copyright. It may not be copied, used, reproduced or transmitted in any way or in any form without the express permission of H/A Architects Pty Ltd.
General Notes:
Architectural drawings to be read in conjunction with all other consultants detailed drawings, specifications & reports.
Do not scale this drawing. Verify all dimensions on site.
Refer all discrepancies to H/A before commencing any work.

H/A Architects Pty Ltd A.C.N. 161 638 320
nominated architect: Kola Hong (LAI)
(Reg No. NSW 87359, QLD #0003)
e admin@harchitects.com.au
t 02 9169 8642
w www.harchitects.com.au
a Level 1, 5 George St, North Sydney NSW 2157

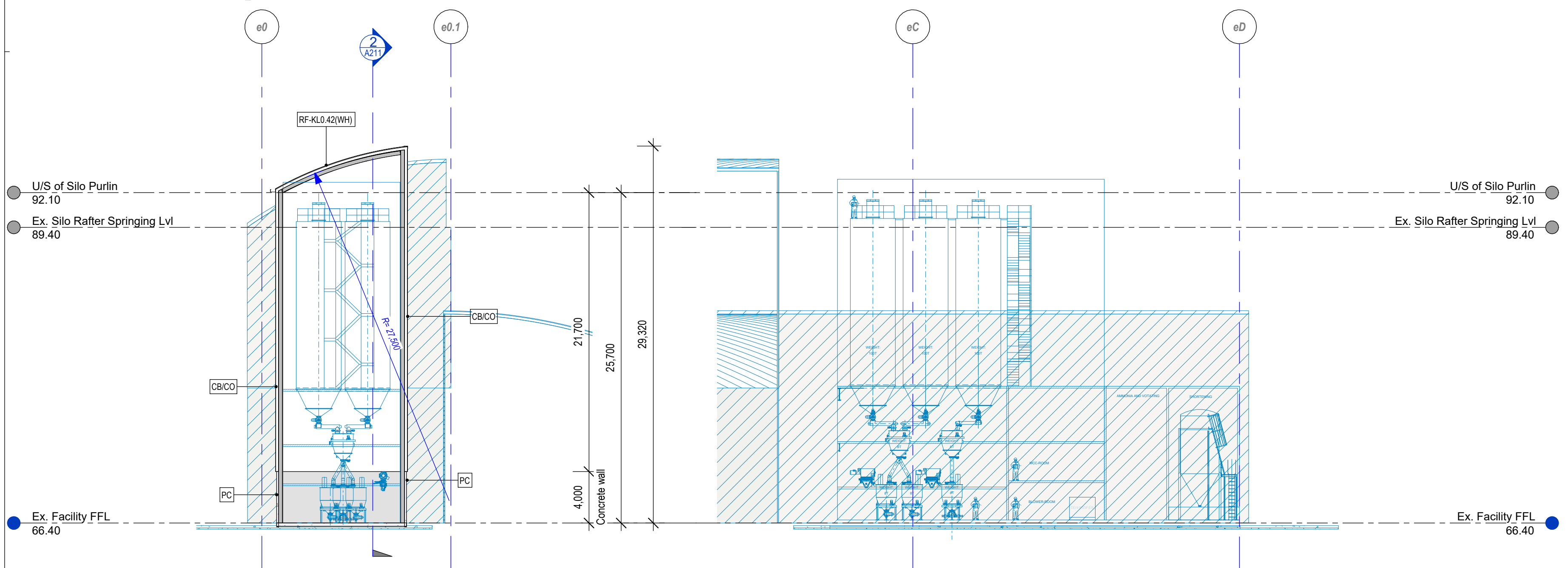


DRAWING TITLE
Second Floor (Plant & Ceiling Level)
DRAWING NUMBER
200810- AR-A105 -
DRAWN
AB
CHK
HL
ISSUE

General Legend	
CB/CO	Steel framed wall with Colorbond cladding Custom Orb profile
PC	Precast concrete wall panel to engineer's details, paint finish as specified
RF-KL0.42(VH)	0.42 BMF 'Lysaght Klip-Lok' profile clip-fixed Zincalume sheeting, 50mm min. reflective foil backed insulation be installed free of creases. Provide safety wire mesh to WorkCover requirement

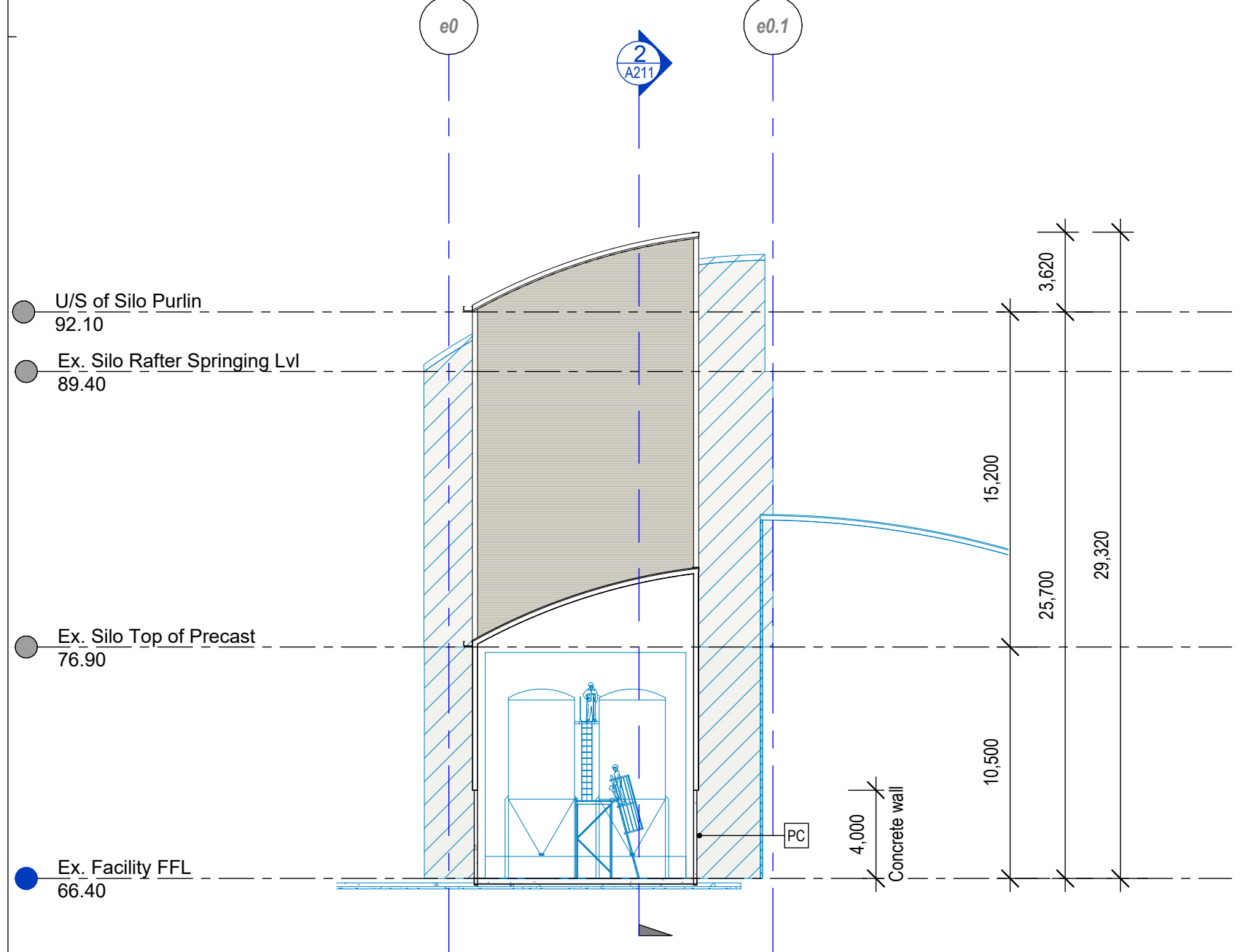


1 Silo-1 Floor Plan
1:250 @A0



6 Cross Section 1 (Silo-1 Looking East)
A003 1:250 @A0

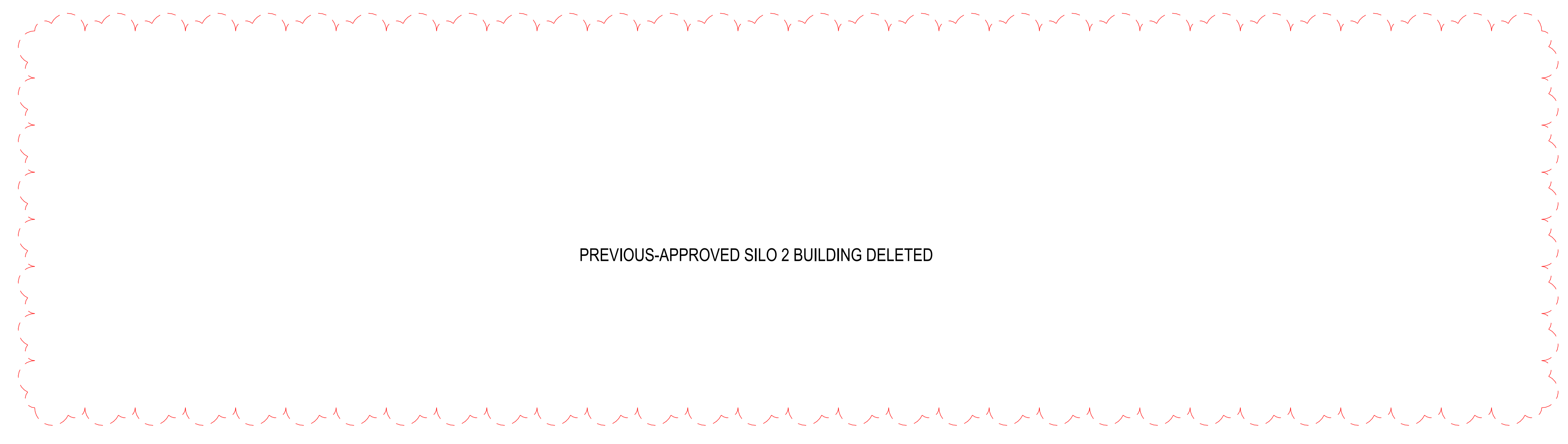
8 Longitudinal Section (Silo-1 Looking South)
1:250 @A0



7 Cross Section 2 (Silo-1 Looking East)
A003 1:250 @A0



PREVIOUS-APPROVED STORAGE SHED DELETED



PREVIOUS-APPROVED SILO 2 BUILDING DELETED

EXTERNAL FINISHES LEGEND	
1	PRE-FINISHED METAL CLADDING - COLORBOND 'SURFMIST'
2	PAINT COLOUR - COLORBOND SHALE GREY
3	PAINT COLOUR - RED TO MATCH ARONTS RED
4	PAINT COLOUR - COLORBOND MONUMENT
5	BLOCKWORK - DARK GREY
6	POWDER COATED PERFORATED SCREEN - MID GREY
7	POWDER COATED BATTENS - TIMBER MID COLOUR
8	GREEN WALL
9	ZINCALUME
10	PRE-FINISHED METAL CLADDING - COLORBOND 'WHITEHAVEN'
11	PRE-FINISHED METAL CLADDING - COLORBOND 'MONUMENT'

ALL LEVELS AREA INDICATIVE AND SHOULD BE READ IN CONJUNCTION WITH CIVIL ENGINEERS DRAWINGS FOR FINAL LEVELS OF ALL EXISTING/PROG.
ALL LEVELS SHOWN TO BE ±100mm

DEVELOPMENT APPLICATION

19/03/2025 11:42:39 AM Subarea Docs\05_Grounding\05_Proposed Grounding.rvt



PROJECT CHARTER HALL - HUNTINGWOOD
ADDRESS Lot 1 DP866251
65 HUNTINGWOOD DRIVE
HUNTINGWOOD, NSW 2148
PROJECT NUMBER 200810

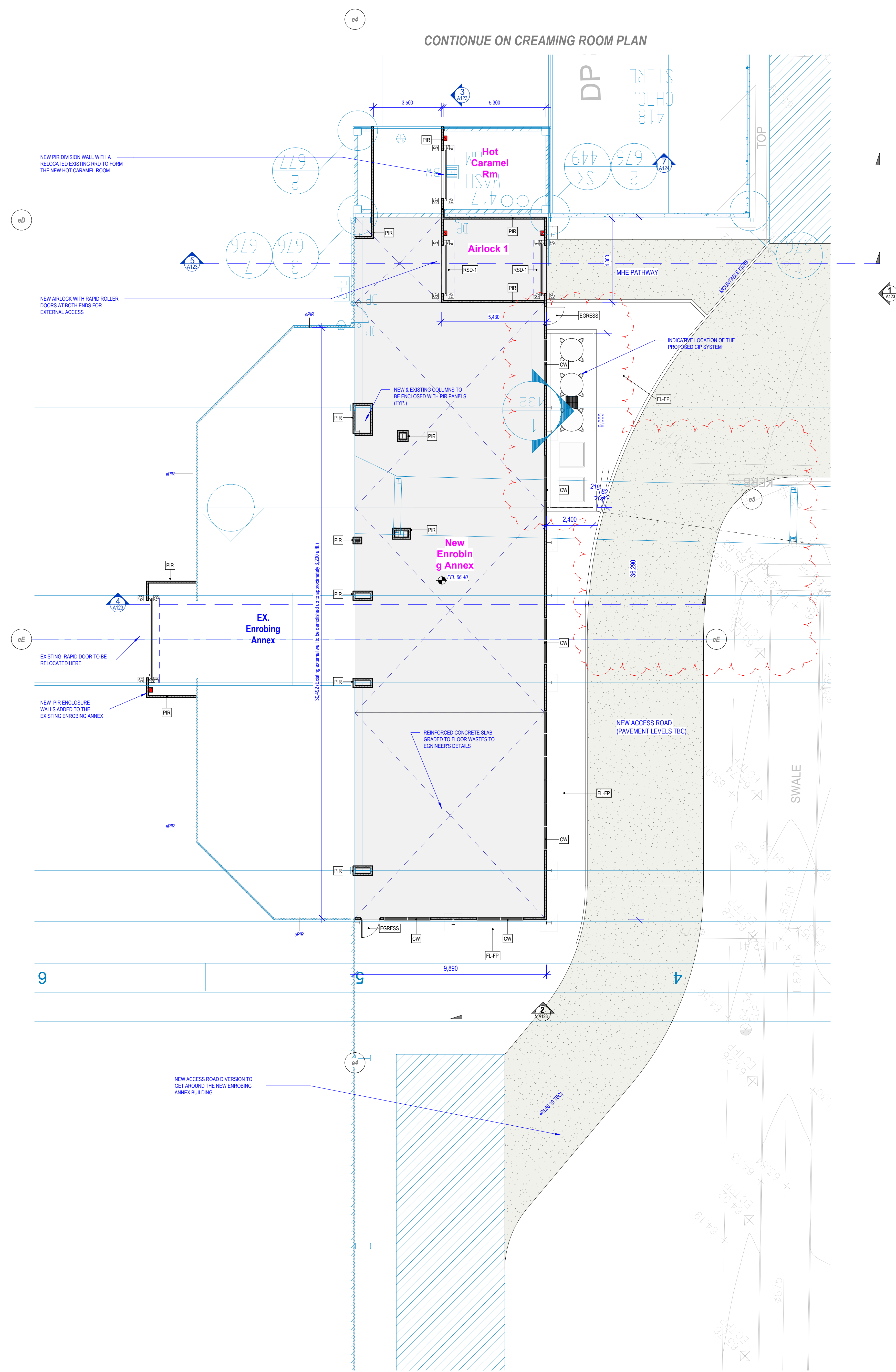
Rev	Description	Date
A	SSDA submission issue	05.02.25
B	External plant area added to Enabling Annex. Revised for SSD submission	19.03.25

H/A Architects Pty Ltd. This drawing is confidential and is subject to copyright. It may not be copied, used, reproduced or transmitted in any way or in any form without the express permission of H/A Architects Pty Ltd.
General Notes:
Architectural drawings to be read in conjunction with all other consultants detailed drawings, specifications & reports.
Do not scale this drawing. Verify all dimensions on site.
Refer all discrepancies to H/A before commencing any work.

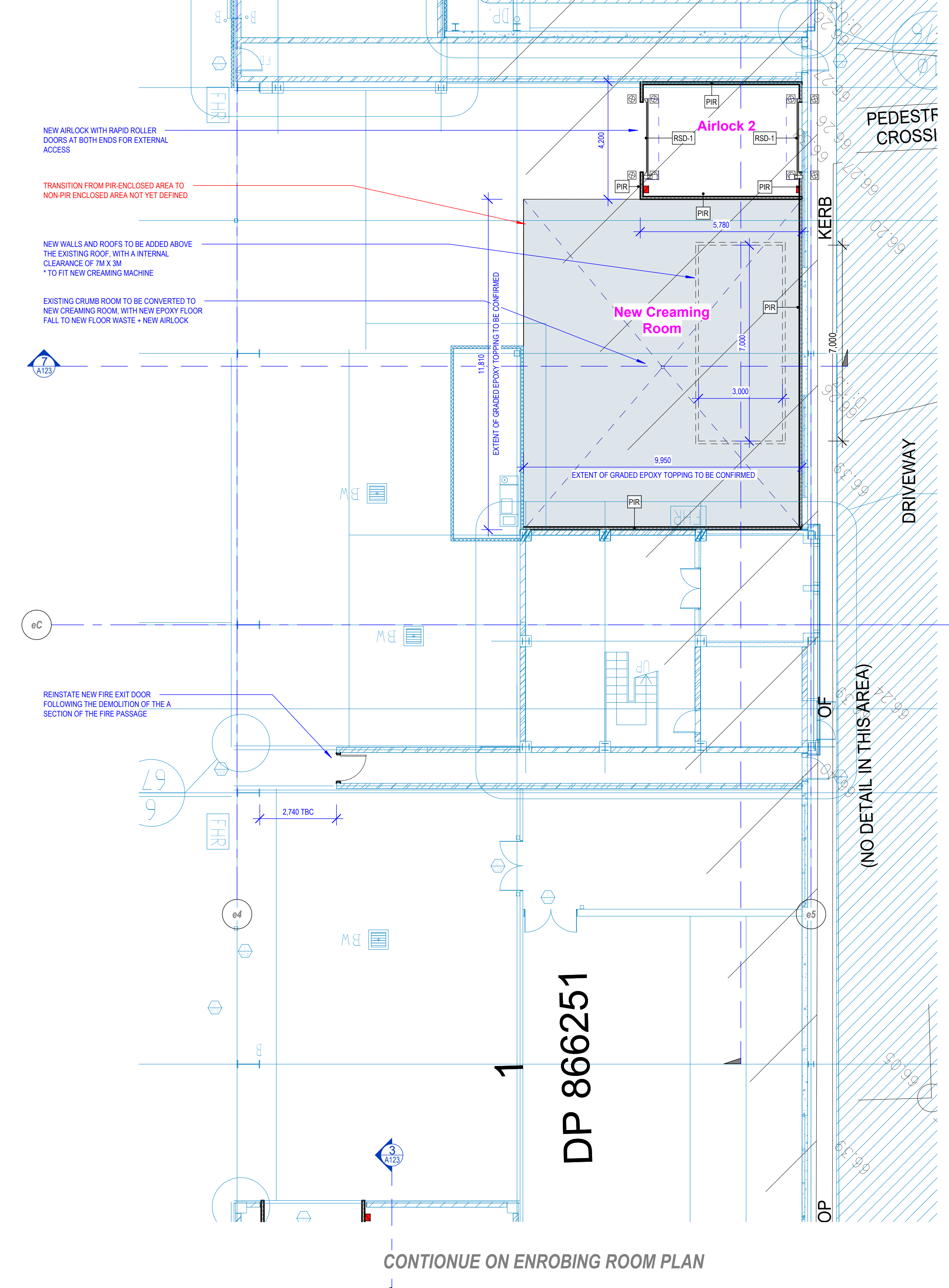
H/A Architects Pty Ltd A.C.N. 161 638 320
nominated architect: Koh Hong LIAI
(Reg No. NSW #7359, QLD #0033)
e admin@harchitects.com.au
t 02 9169 9642
w www.harchitects.com.au
a Level 1, 5 George St, North Sydney NSW 2157



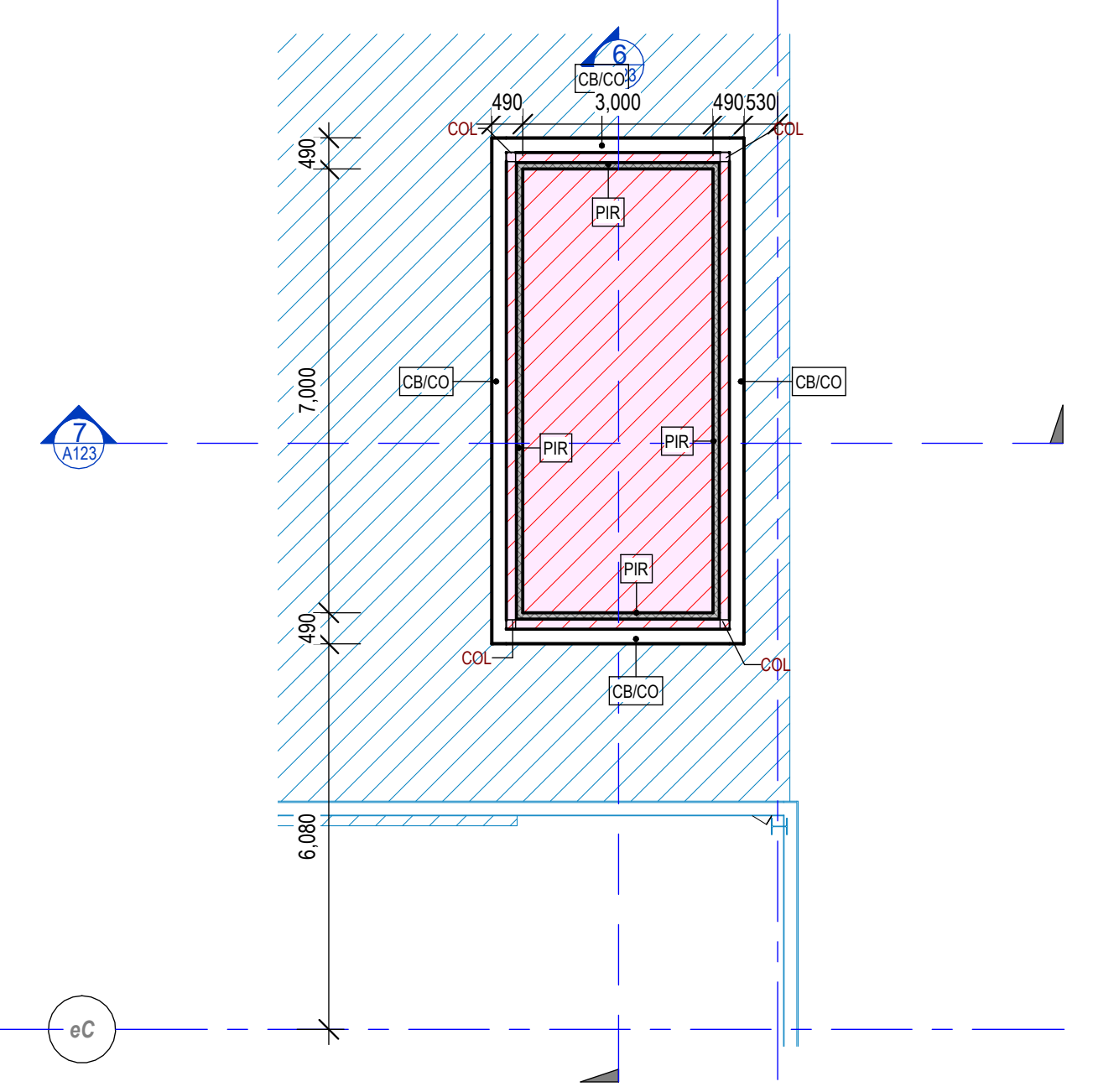
DRAWING TITLE Silo 1
DRAWING NUMBER 200810-AR-A120 -
DRAWN AB
CHECK HL
ISSUE



1 New Enrobing Annex Plan (Proposed)
A121 1:100 @A0



2 Creaming Room Plan (Proposed)
A121 1:100 @A0



3 Creaming Machine Roof Hat Plan
A121 1:100 @A0

General Legend	
CB/CO	Steel framed wall with Colorbond cladding 'Custom Orb' profile
COL	Steel column surface treated and painted to engineer's detail
CW	Aluminium framed curtain wall powdercoat finish as specified
EGRESS	Egress door
FLFP	Concrete footpath slab fall away from building to engineer's details
PIR	Polyisocyanurate (PIR) panel for temperature controlled space application to manufacturer's details. Colorbond finish as specified.
RSD-1	Insulated Steel Roller Shutter Door (Container Doors) (2.7m W x 3.0m H).

ALL LEVELS AREA INDICATIVE AND SHOULD BE READ IN CONJUNCTION WITH CIVIL ENGINEERS DRAWINGS FOR FINAL LEVELS OF ALL EXISTING/PROG.
ALL LEVELS SHOWN TO BE ±100mm

DEVELOPMENT APPLICATION

19/03/2025 11:43:20 AM \\server\docs\05_Grounding\05_Proposed_Grounding.rvt



PROJECT CHARTER HALL - HUNTINGWOOD
ADDRESS Lot 1 DP866251
65 HUNTINGWOOD DRIVE
HUNTINGWOOD, NSW 2148
PROJECT NUMBER 200810

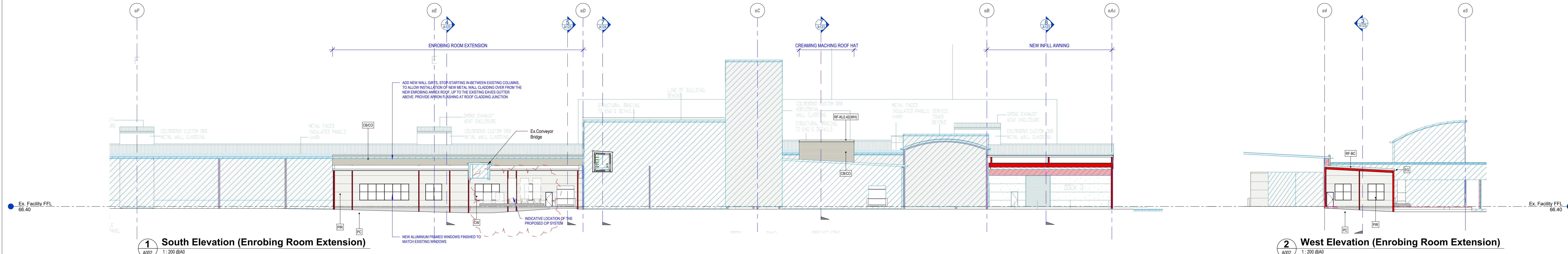
Rev	Description	Date
A	Issue for coordination	27.09.24
B	General revision. View crop expanded. Drawing to update.	09.02.25
C	External plant area added to Enrobing Annex. Revised for SSD submission.	19.03.25

H/L Architects Pty Ltd. This drawing is confidential and is subject to copyright. It may not be copied, used, reproduced or transmitted in any way or in any form without the express permission of H/L Architects Pty Ltd.
General Notes:
Architectural drawings to be read in conjunction with all other consultants' detailed design specifications & reports.
Do not scale this drawing. Verify all dimensions on site.
Refer all discrepancies to H/LA before commencing any work.

H/L Architects Pty Ltd A.C.N. 161 638 320
nominated architect: Kola Hong (LAU)
(Reg No. NSW #7359, QLD #0033)
e admin@hlaarchitects.com.au
t 02 9569 8842
www.hlaarchitects.com.au
a Level 1, 5 George St, North Sydney NSW 2157

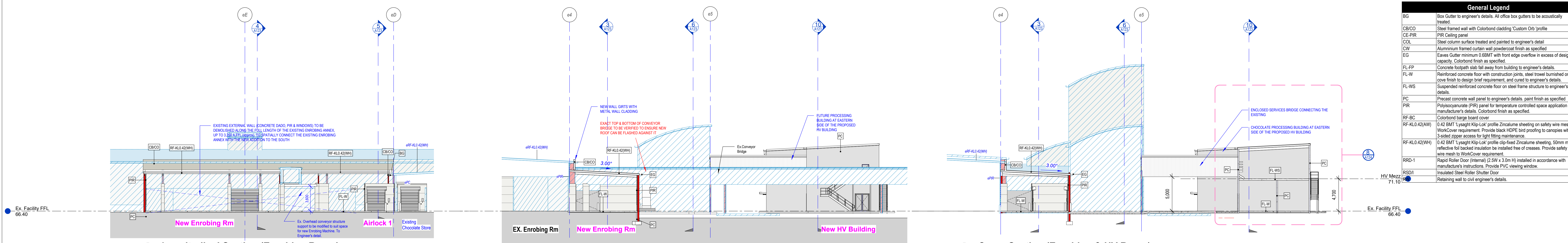


DRAWING TITLE
Creaming & Enrobing Room Floor Plans
DRAWING NUMBER
200810-AR-A122 -
DRAWN
AUTHOR
CHECKED
ISSUED



1 South Elevation (Enrobing Room Extension)
A002 1:200 @A0

2 West Elevation (Enrobing Room Extension)
A002 1:200 @A0

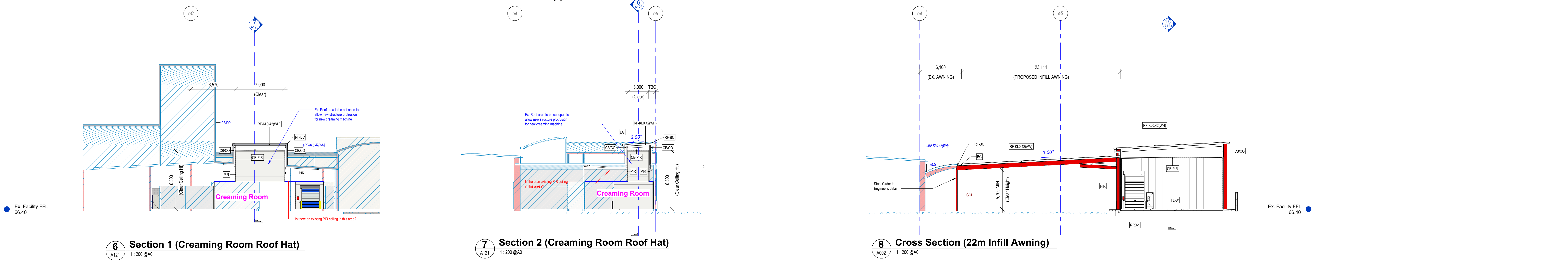


3 Longitudinal Section (Enrobing Room)
A121 1:200 @A0

4 Cross Section (Enrobing Room)
A002 1:200 @A0

5 Cross Section (Enrobing & HV Room)
A002 1:200 @A0

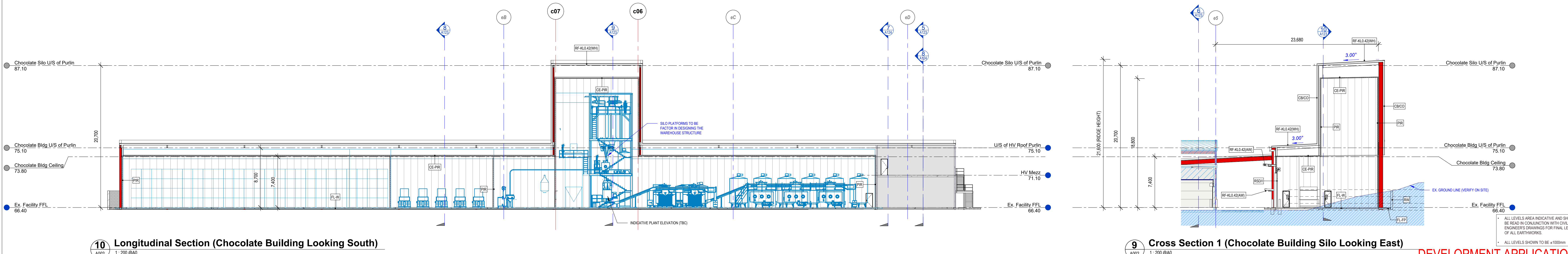
General Legend	
BC	Box Gutter to engineer's details. All office box gutters to be acoustically treated.
CB/CO	Steel framed wall with Colorbond cladding 'Custom Orb' profile.
CE-PR	PRC Ceiling panel.
COL	Steel column surface treated and painted to engineer's detail.
CW	Aluminium framed curtain wall powdercoat finish as specified.
EG	Eaves Gutter minimum 0.68MT with front edge overflow in excess of design capacity. Colorbond finish as specified.
FL-FP	Concrete footpath slab fall away from building to engineer's details.
FL-W	Reinforced concrete floor with construction joints, steel trowel burnished or cover finish to design brief requirement, and cured to engineer's details.
FL-WS	Suspended reinforced concrete floor on steel frame structure to engineer's details.
PC	Precast concrete wall panel to engineer's details, paint finish as specified.
PR	Polystyrene (PR) panels for temperature controlled space application to manufacturer's details. Colorbond finish as specified.
RF-BC	Colorbond barge board cover.
RF-KL0.42(AW)	0.42 BMT 1/2yaight Klip-Lok profile Zincalume sheeting on safety wire mesh to WorkCover requirement. Provide black HDPE end profiling to canopies with 3-sided zipper access for light fitting maintenance.
RF-KL0.42(WH)	0.42 BMT 1/2yaight Klip-Lok profile clip-fixed Zincalume sheeting, 50mm min. reflective foil backed insulation to be installed free of creases. Provide safety wire mesh to WorkCover requirement.
RRD-1	Rapid Roller Door (Internal) (2.5W x 3.0m H) installed in accordance with manufacturer's instructions. Provide P/C viewing window.
RSDD	Insulated Steel Roller Shutter Door.
Retaining wall	Retaining wall to civil engineer's details.



6 Section 1 (Creaming Room Roof Hat)
A121 1:200 @A0

7 Section 2 (Creaming Room Roof Hat)
A121 1:200 @A0

8 Cross Section (22m Infill Awning)
A002 1:200 @A0



10 Longitudinal Section (Chocolate Building Looking South)
A002 1:200 @A0

9 Cross Section 1 (Chocolate Building Silo Looking East)
A002 1:200 @A0

ALL LEVELS AREA INDICATIVE AND SHOULD BE READ IN CONJUNCTION WITH CIVIL ENGINEERS DRAWINGS FOR FINAL LEVELS OF ALL EXTERIORS.
ALL LEVELS SHOWN TO BE ±100mm

19/03/2025 11:42:47 AM - Autodesk Docs: 65_Grounding\911_05_Project Grounding.rvt



PROJECT CHARTER HALL - HUNTINGWOOD
ADDRESS Lot 1 DP866251
65 HUNTINGWOOD DRIVE
HUNTINGWOOD, NSW 2148
PROJECT NUMBER 200810

Rev	Description	Date
A	Issue for Coordination.	19.09.24
B	Issue for coordination.	27.09.24
C	Chocolate Processing Bldg details issued. Exit stairs location of the Switchroom revised as shown. Overhead services conduit bridge added.	09.10.24
D	Coordination Issue.	20.12.24
E	External plant area added to Enrobing Annex. Revised for SSD submission.	19.03.25

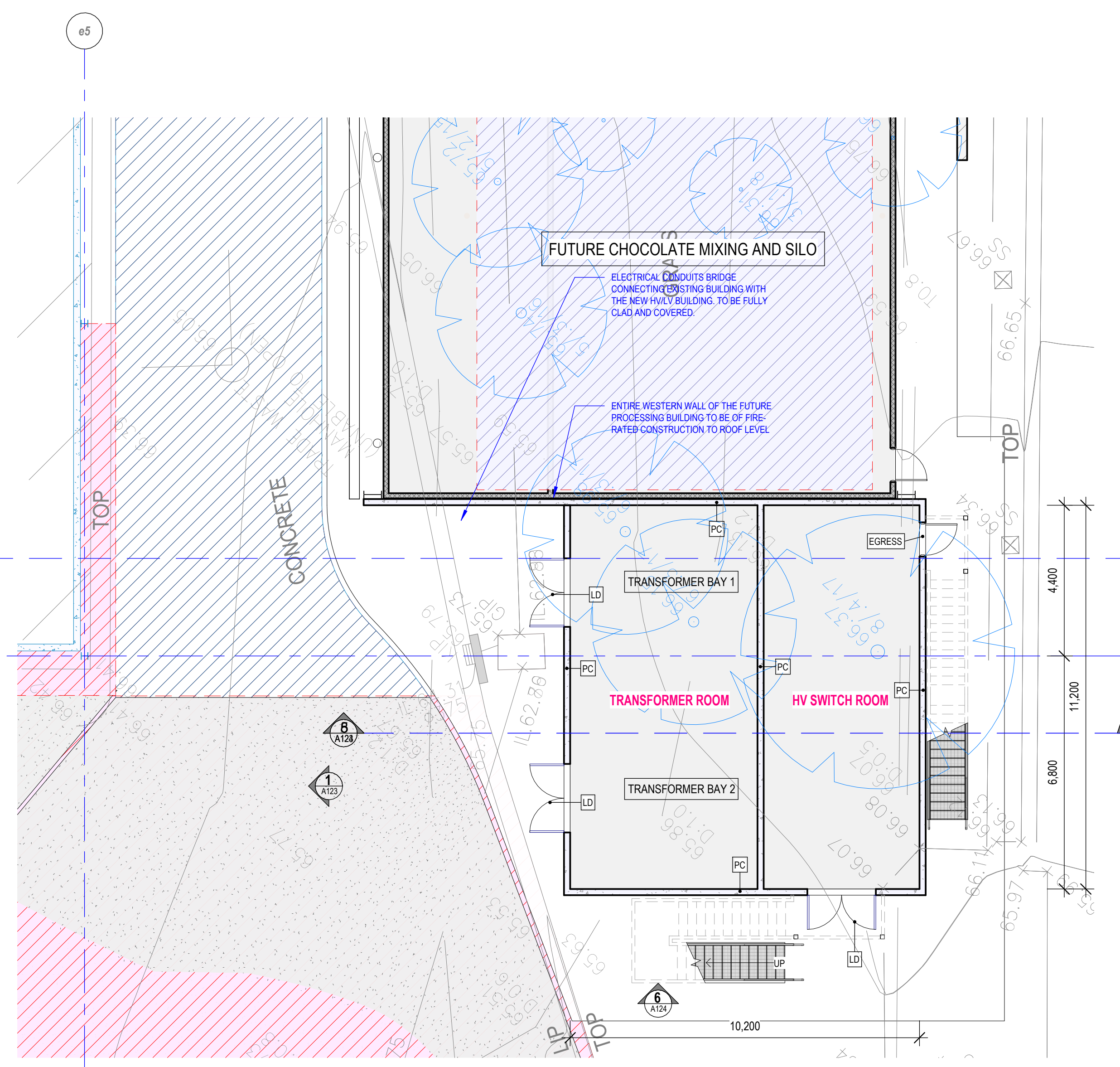
H/A Architects Pty Ltd. This drawing is confidential and is subject to copyright. It may not be copied, used, reproduced or transmitted in any way or in any form without the express permission of H/A Architects Pty Ltd.
General Notes:
Architectural drawings to be read in conjunction with all other consultants detailed drawings, specifications & reports.
Do not scale this drawing. Verify all dimensions on site.
Refer all discrepancies to H/A before commencing any work.

H/A Architects Pty Ltd A.C.N. 161 638 320
nominated architect: Kola Hong (LAI)
(Reg No. NSW #7589, QLD #0033)
e admin@harchitects.com.au
t 02 9569 8862
www.harchitects.com.au
a Level 1, 5 George St, North Sydney NSW 2157

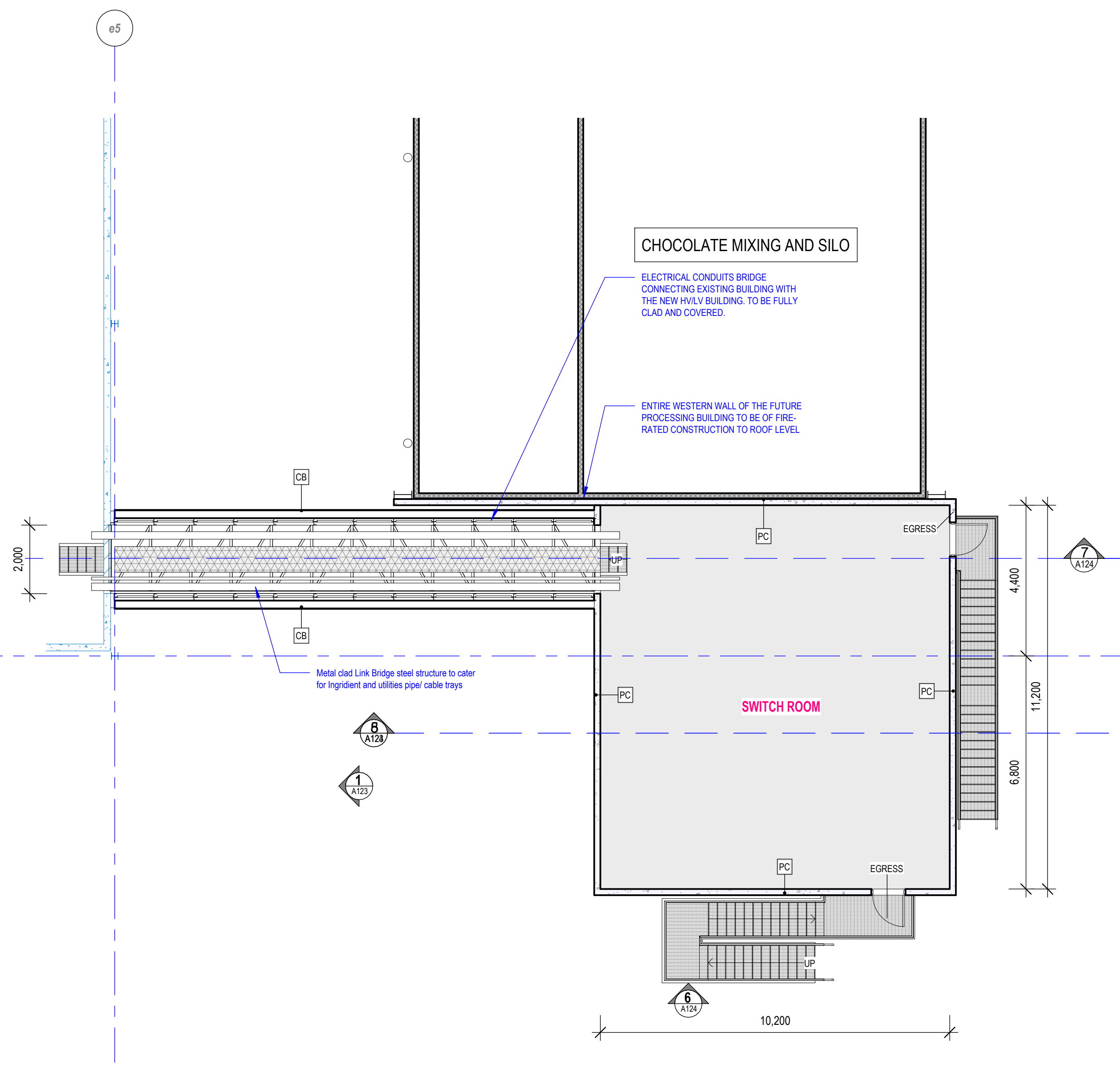


DEVELOPMENT APPLICATION
DRAWING TITLE Enrobing Room/HV Room/Chocolate Bldg Elevations and Sections
DRAWING NUMBER 200810-AR-A123 -
DRAWN AB
CHECK HL
ISSUED

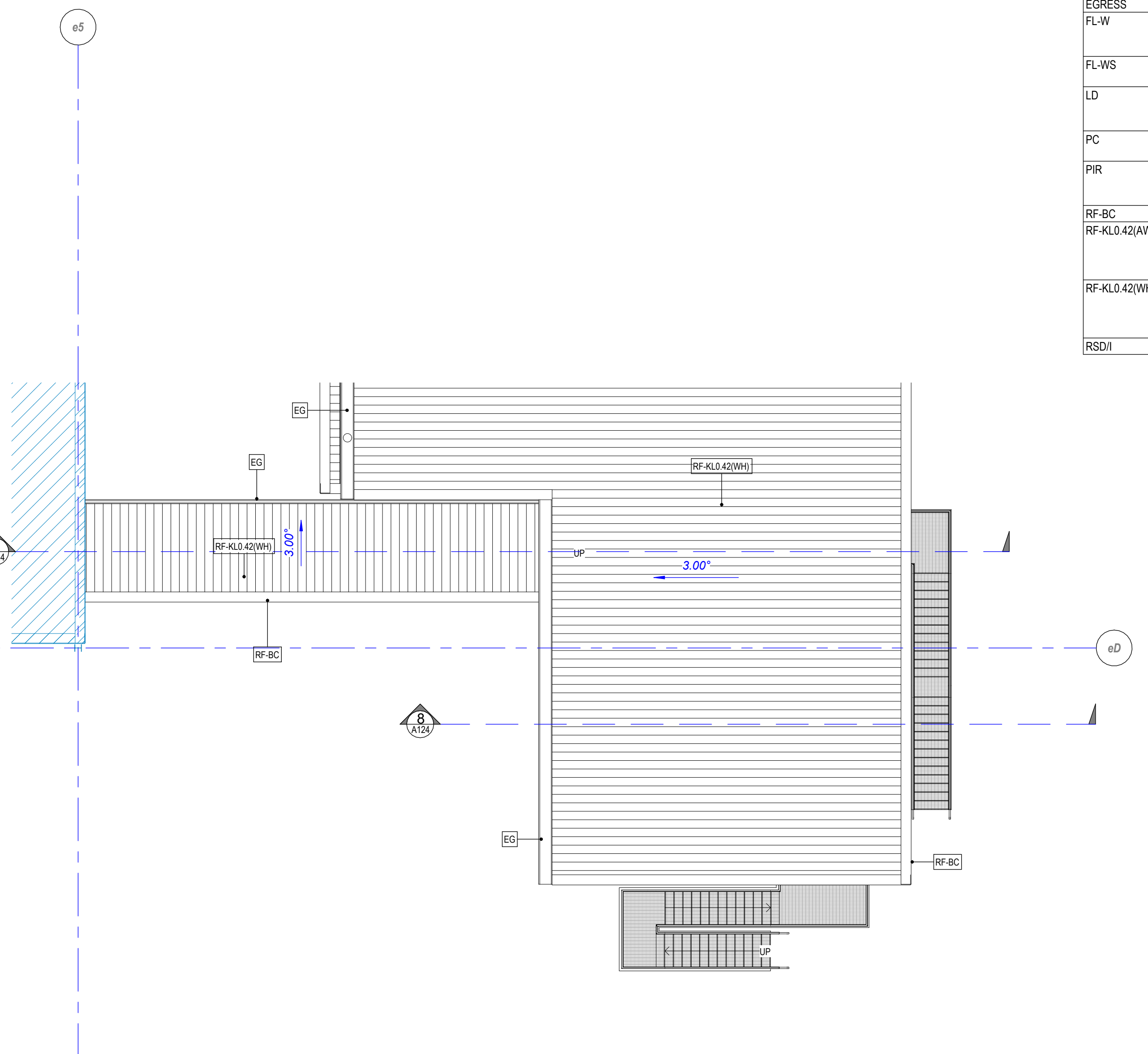
General Legend	
CB	Steel framed wall with Colorbond cladding
CB/CO	Steel framed wall with Colorbond cladding 'Custom Orb' profile
CE-CO	Lightweight Custom-Orb profile ceiling on suspension system framing
EG	Eaves Gutter minimum 0.65MT with front edge overflow in excess of design capacity. Colorbond finish as specified.
EGRESS	Egress door.
FL-W	Reinforced concrete floor with construction joints, steel towel brushed or cure finish to design brief requirement, and cured to engineer's details.
FL-WS	Suspended reinforced concrete floor on steel frame structure to engineer's details.
LD	Louvre Door Louvre assembly to be weatherproof and vermin-proof, and equipped with removable washable dust filter.
PC	Precast concrete wall panel to engineer's details. paint finish as specified.
PIR	Polyisocyanurate (PIR) panel for temperature controlled space application to manufacturer's details. Colorbond finish as specified.
RF-BC	Colorbond barge board cover.
RF-KL0.42(AW)	0.42 BMT 'Lysight Kip-Lok' profile Zincalume sheeting on safety wire mesh to WorkCover requirement. Provide black HDPE bar profiling to canopies with 3-sided zipper access for light fitting maintenance.
RF-KL0.42(WH)	0.42 BMT 'Lysight Kip-Lok' profile clip-fixed Zincalume sheeting, 50mm min. reflective foil backed insulation be installed free of creases. Provide safety wire mesh to WorkCover requirement.
RS01	Insulated Steel Roller Shutter Door



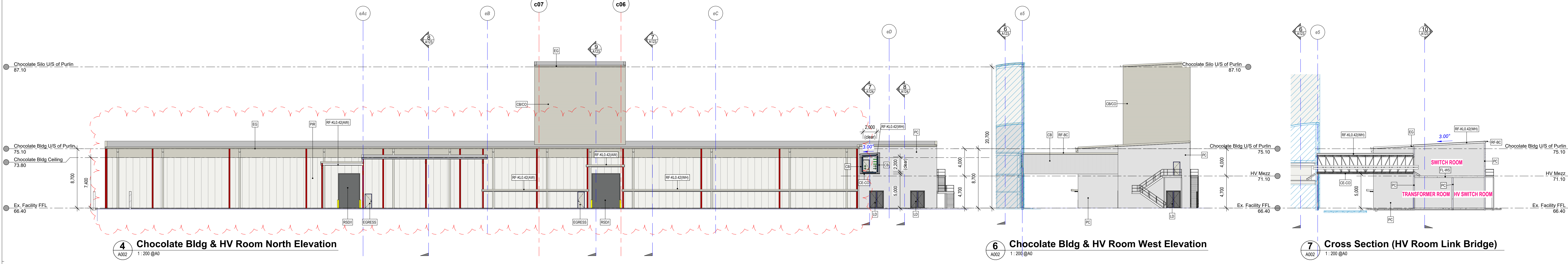
1 HV Room Ground Floor Plang Buildings Plan
A121 1:100 @A0



2 HV Room Mezzanine Plan
1:100 @A0



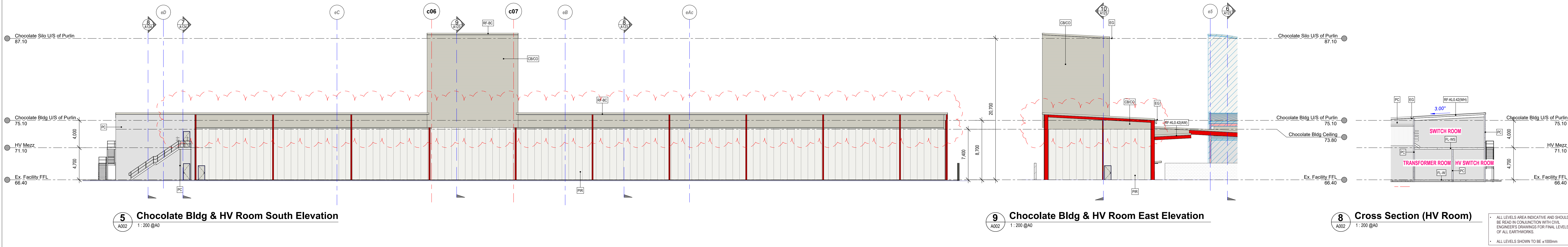
3 HV Room Roof Plan
A121 1:100 @A0



4 Chocolate Bldg & HV Room North Elevation
A002 1:200 @A0

6 Chocolate Bldg & HV Room West Elevation
A002 1:200 @A0

7 Cross Section (HV Room Link Bridge)
A002 1:200 @A0



5 Chocolate Bldg & HV Room South Elevation
A002 1:200 @A0

9 Chocolate Bldg & HV Room East Elevation
A002 1:200 @A0

8 Cross Section (HV Room)
A002 1:200 @A0

ALL LEVELS AREA INDICATIVE AND SHOULD BE READ IN CONJUNCTION WITH CIVIL ENGINEERS DRAWINGS FOR FINAL LEVELS OF ALL EXISTING/PROG.
ALL LEVELS SHOWN TO BE ±100mm

FOR CO-ORDINATION

20/10/2024 11:23:18 AM Autodesk Docs\65_Grounding\05_Planet Grounding.rvt



PROJECT CHARTER HALL - HUNTINGWOOD
ADDRESS Lot 1 DP866251
65 HUNTINGWOOD DRIVE
HUNTINGWOOD, NSW 2148
PROJECT NUMBER 200810

Rev	Description	Date
A	Issue for coordination	27.09.24
B	Chocolate Processing Bldg details issued. Exit stairs location of the Switchroom revised as shown. Overhead services conduits bridge added.	09.12.24
C	Metal cladding to Chocolate Bldg revised reflecting reduced extent of awning.	20.12.24

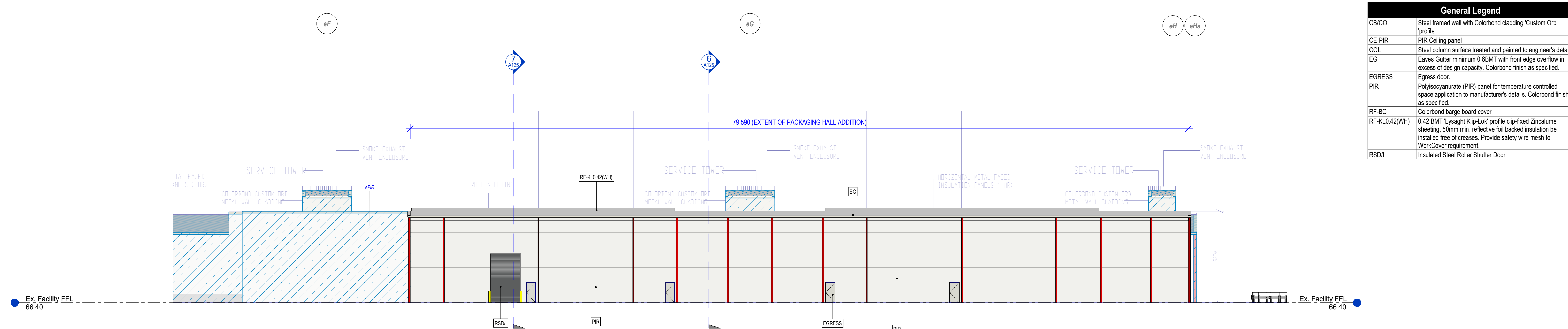
H/A Architects Pty Ltd. This drawing is confidential and is subject to copyright. It may not be copied, used, reproduced or transmitted in any way or in any form without the express permission of H/A Architects Pty Ltd.
General Notes:
Architectural drawings to be read in conjunction with all other consultants' detailed design specifications & reports.
Do not scale this drawing. Verify all dimensions on site.
Refer all discrepancies to H/A before commencing any work.

H/A Architects Pty Ltd A.C.N. 161 638 320
nominated architect: Kola Hong (LAI)
(Reg No. NSW #7589, QLD #0003)
e admin@harchitects.com.au
t 02 9569 8662
www.harchitects.com.au
a Level 1, 5 George St, North Sydney NSW 2157

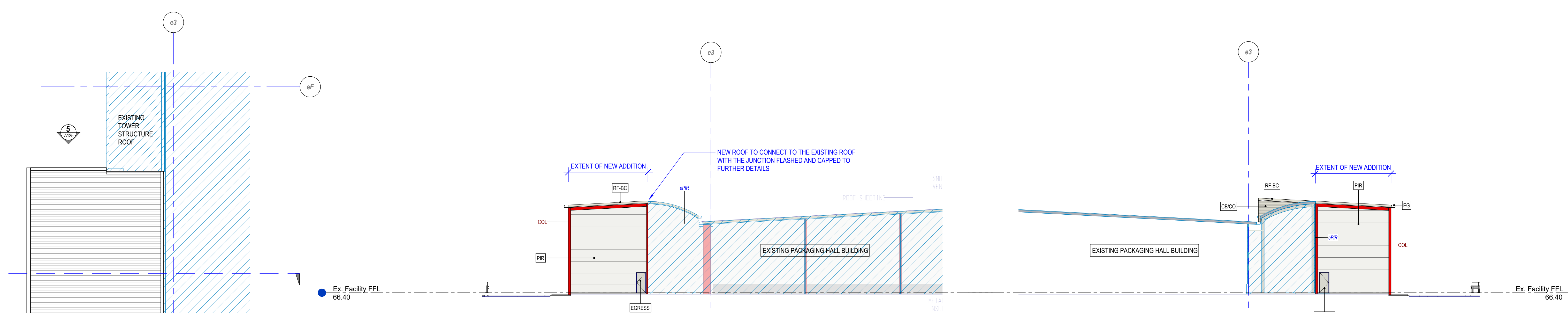


DRAWING TITLE
Chocolate Bldg n HV-LV Building Plan & Elevation
DRAWING NUMBER
200810-AR-A124 -
DRAWN
AB
CHK
HL
ISSUE
C

General Legend	
CB/CO	Steel framed wall with Colorbond cladding 'Custom Orb' profile
CE-PR	PR Ceiling panel
COL	Steel column surface treated and painted to engineer's detail
EG	Eaves Gutter minimum 0.6BMT with front edge overflow in excess of design capacity. Colorbond finish as specified.
EGRESS	Egress door
PR	Polystyrene (PIR) panel for temperature controlled space application to manufacturer's details. Colorbond finish as specified.
RF-BC	Colorbond barge board cover
RF-KL0.42(WH)	0.42 BMT 'Lysaght Kip-Lok' profile clip-fixed Zincalume sheeting. 50mm min. reflective foil backed insulation be installed free of creases. Provide safety wire mesh to WorkCover requirement.
RS01	Insulated Steel Roller Shutter Door

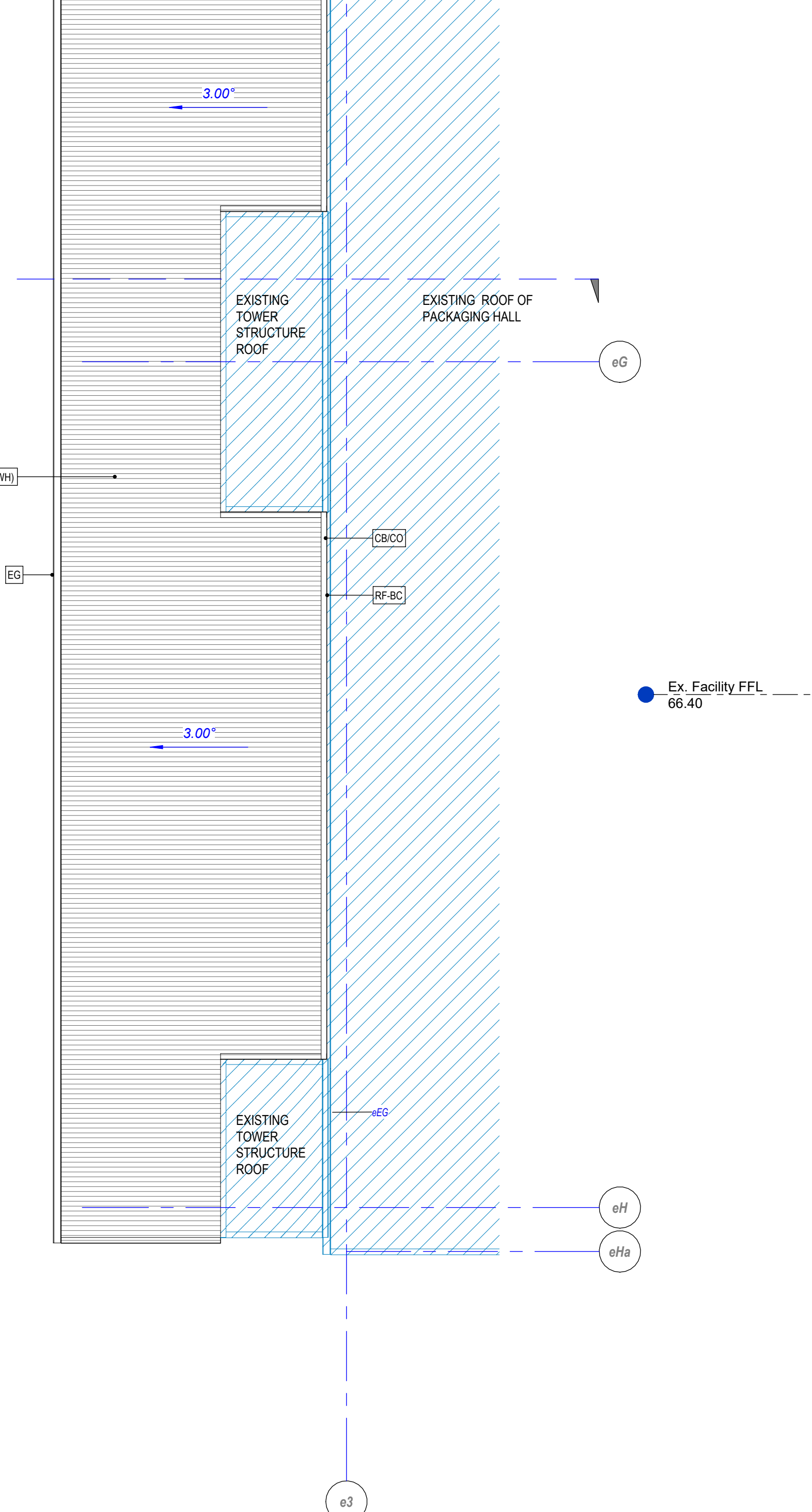


3 North Elevation (Packaging Material Store)
A002 1:200 @A0

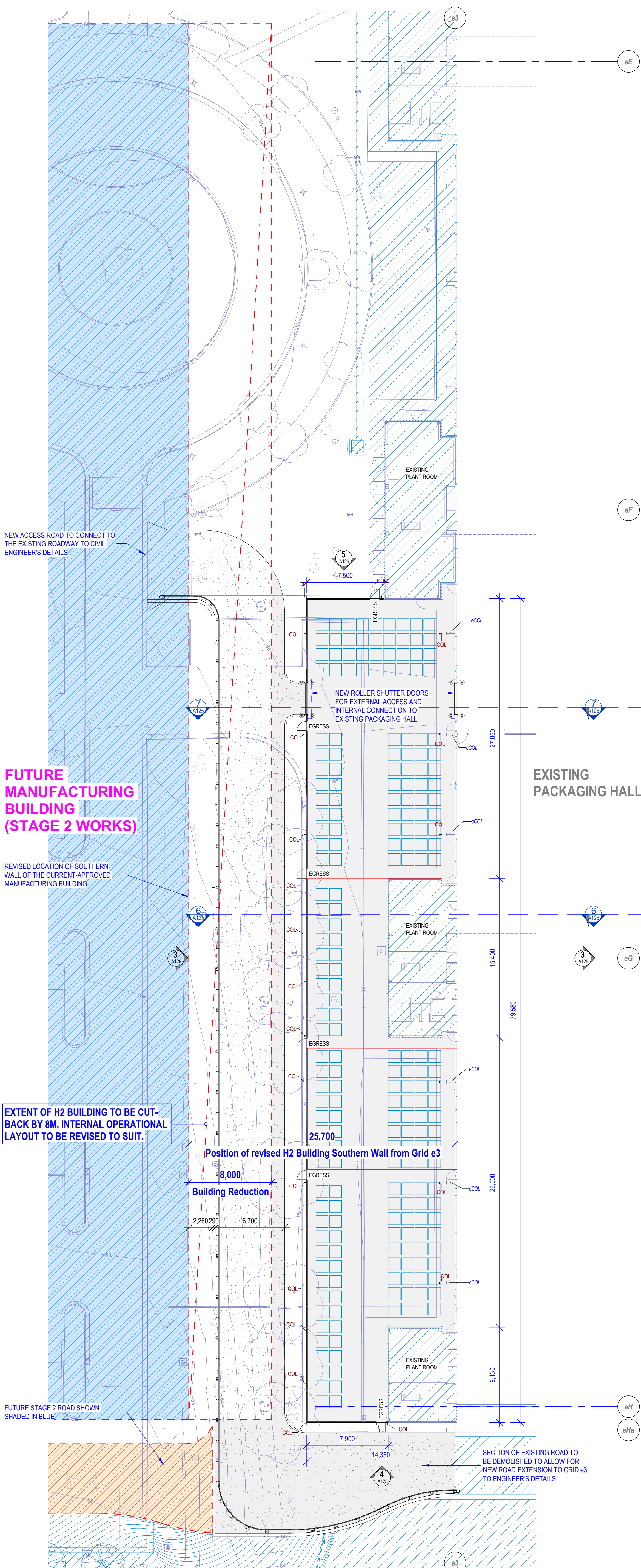


4 West Elevation (Packaging Material Store)
A002 1:200 @A0

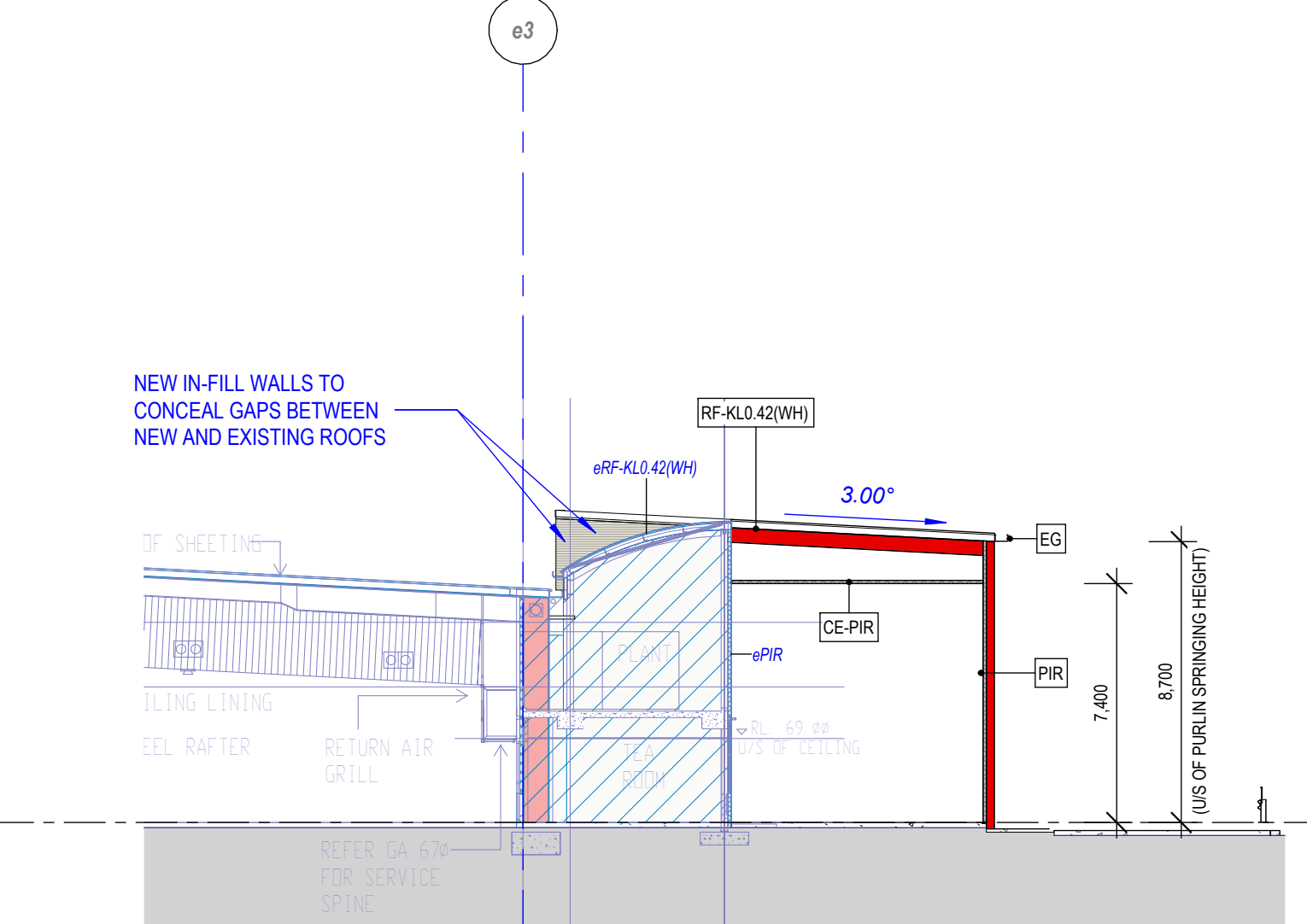
5 East Elevation (Packaging Material Store)
A002 1:200 @A0



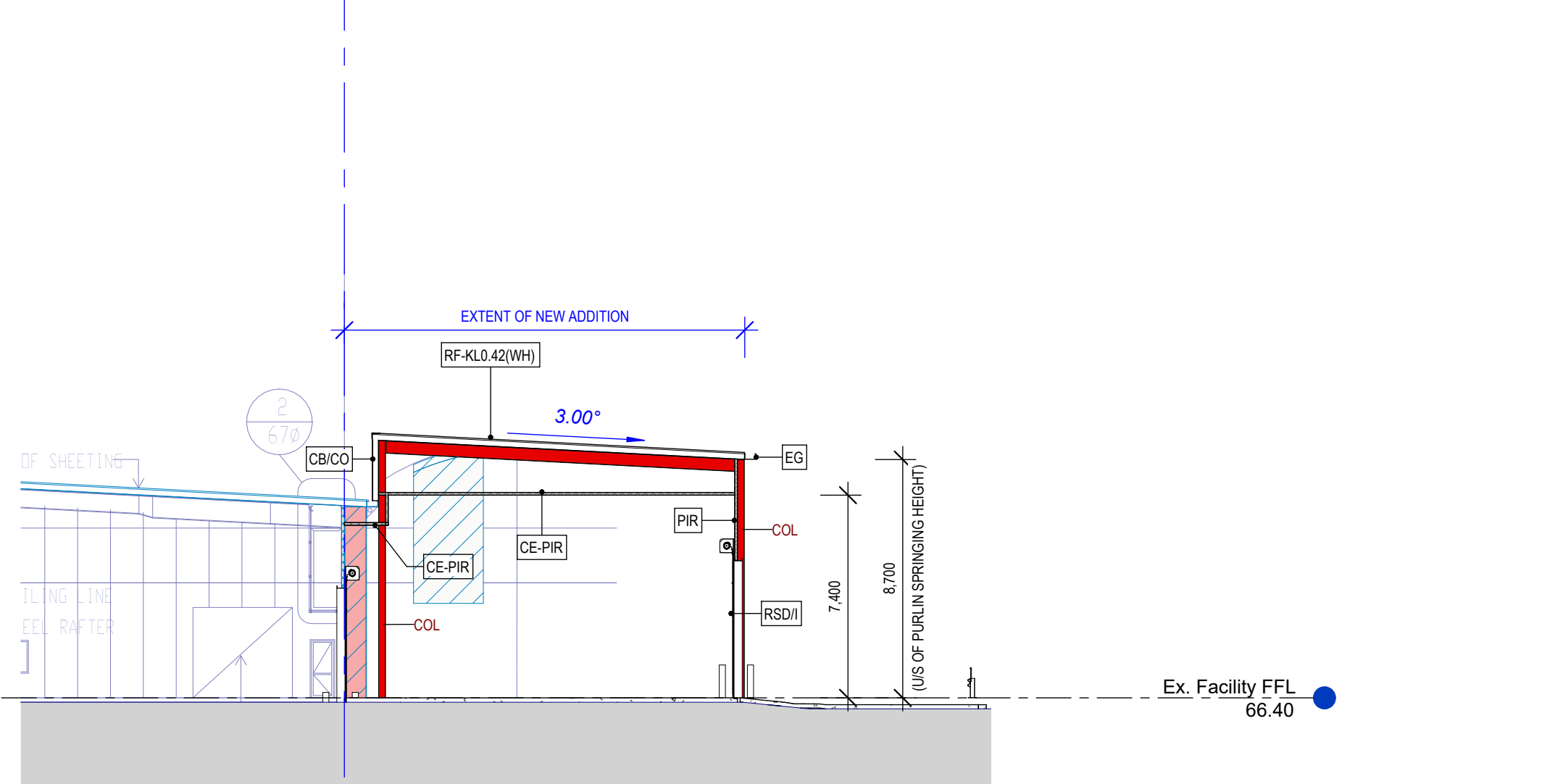
2 Roof Plan (Packaging Material Store)
CC-110 1:200 @A0



1 Site Plan (Packaging Material Store)
A002 1:200 @A0



6 Cross Section (Grid FD-FE)
A125 1:200 @A0



7 Cross Section (Grid FC)
A125 1:200 @A0

ALL LEVELS AREA INDICATIVE AND SHOULD BE READ IN CONJUNCTION WITH CIVIL ENGINEERS DRAWINGS FOR FINAL LEVELS OF ALL EXISTING/RS.

FOR CO-ORDINATION

12/12/2024 12:28:00 PM - Autodesk Docs (66_Grounding)011_05_Project Grounding.rvt



PROJECT CHARTER HALL - HUNTINGWOOD
ADDRESS Lot 1 DP866251
65 HUNTINGWOOD DRIVE
HUNTINGWOOD, NSW 2148
PROJECT NUMBER 200810

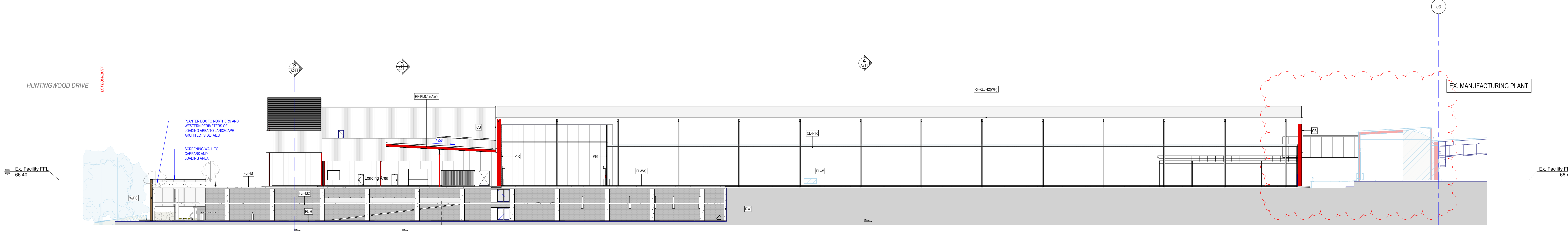
Rev	Description	Date
A	Stage 1 Site Plan in Packaging Material Store for design coordination. Oven Annex, Engineering Store and hardstand expansion into added.	12.12.24

H/L Architects Pty Ltd. This drawing is confidential and is subject to copyright. It may not be copied, used, reproduced or transmitted in any way or in any form without the express permission of H/L Architects Pty Ltd.

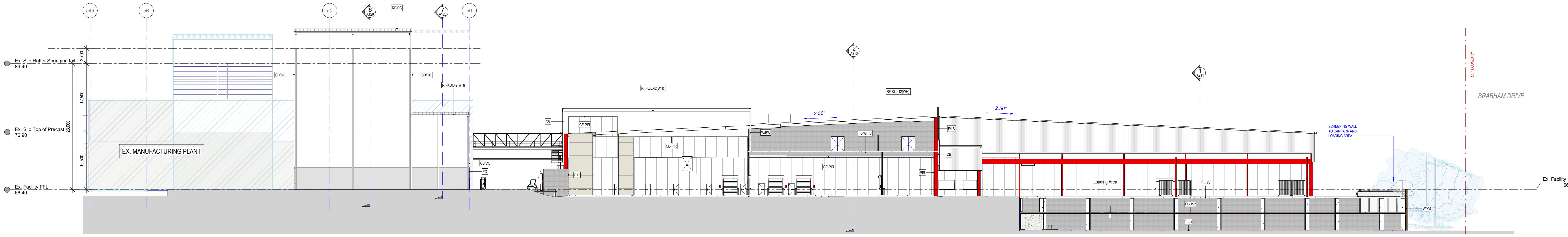
H/L Architects Pty Ltd A.C.N. 161 638 320
nominated architect: Kola Hong (AU)
(Reg No NSW #7559, QLD #0033)
e admin@hlaarchitects.com.au
t 02 9559 9942
www.hlaarchitects.com.au
a Level 1, 5 George St, North Sydney NSW 2157



DRAWING TITLE Packaging Material Store
DRAWING NUMBER
DRAWN: [blank]
AUD: [blank]
CHK: [blank]
HL: [blank]
ISSUE: [blank]



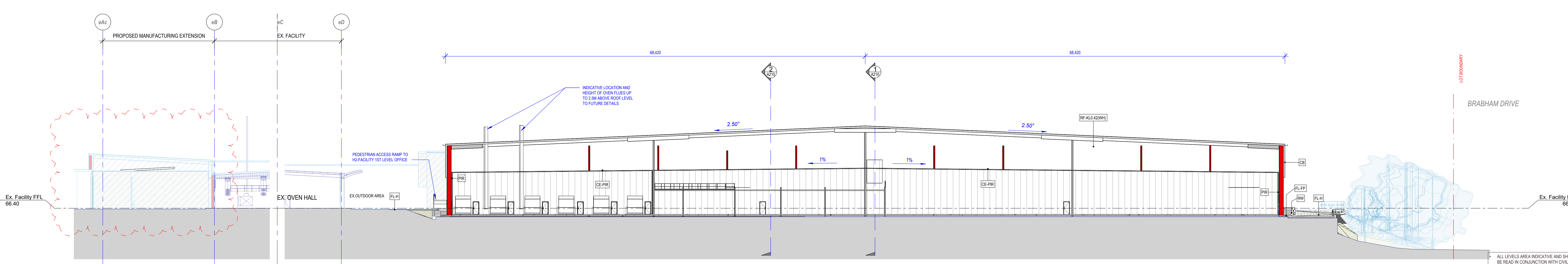
1 N-S Site Section 1 (Looking East)1
A003 1:250 @A0



2 E-W Site Section 1 (Looking South)2
A003 1:250 @A0

General Legend	
CS	Steel framed wall with Colorbond cladding
CB/CO	Steel framed wall with Colorbond cladding 'Custom Orb' profile
CE-PR	PR Ceiling panel
FLS	Proprietary fixed metal external louvre screen to be equivalent to Cori 'TUL Universal Louvre'. Louvre blade orientation to block view from below. Powdercoat finish as specified
FL-FP	Concrete footpath slab fall away from building to engineer's details.
FL-H	Heavy duty concrete pavement steel cover trowel finish to structural engineer's details.
FL-HS	
FL-HS2	
FL-W	Reinforced concrete floor with construction joints, steel trowel finished or cover finish to design brief requirement, and cured to engineer's details.
FL-WHS	Suspended reinforced concrete floor on steel frame structure to engineer's details.
FL-WS	Suspended reinforced concrete floor on steel frame structure to engineer's details.
PC	Precast concrete wall panel to engineer's details, paint finish as specified.
PIR	Polyisocyanurate (PIR) panel for temperature controlled space application to manufacturer's details. Colorbond finish as specified.
RF-BC	Colorbond barge board cover
RF-KL42(AW)	0.42 BMT 'Lysaght Kip-Lak' profile Zincalume sheeting on safety wire mesh to WorkCover requirement. Provide black HDPE end profiling to cope with 3-sided zipper access for light fitting maintenance.
RF-KL42(WH)	0.42 BMT 'Lysaght Kip-Lak' profile dip-finish Zincalume sheeting, 20mm min. reflective foil backed insulation to be installed free of creases. Provide safety wire mesh to WorkCover requirement.
RW	Retaining wall to civil engineer's details.
WBW	Blockwork wall to engineer's detail
WPS	

3 E-W Site Section 1 (Looking South)1
A003 1:250 @A0



4 E-W Site Section 1 (Looking South)
A003 1:250 @A0

002025-2-6-65 PM - Address: Docs\05_Grounding\05_Planet_Grounding.rvt



PROJECT CHARTER HALL - HUNTINGWOOD
ADDRESS Lot 1 DP866251
65 HUNTINGWOOD DRIVE
HUNTINGWOOD, NSW 2148
PROJECT NUMBER 200810

Rev	Description	Date
P1	Preliminary Issue	19.08.21
A	SSA submission issue	05.02.25

H2 Architects Pty Ltd. This drawing is confidential and is subject to copyright. It may not be copied, used, reproduced or transmitted in any way or in any form without the express permission of H2 Architects Pty Ltd.
General Notes:
Architectural drawings to be read in conjunction with all other consultants' detailed design specifications & reports.
Do not scale this drawing. Verify all dimensions on site.
Refer all discrepancies to H2A before commencing any work.

H2 Architects Pty Ltd A.C.N. 161 638 320
102/1000 Pacific Highway
North Sydney NSW 1585
e admin@h2a.com.au
t 02 9559 9662
w www.h2a.com.au
a Level 1, 5 George St, North Sydney NSW 2157



DEVELOPMENT APPLICATION

DRAWING TITLE H2 Facility Sections - Sheet 2
DRAWING NUMBER 200810-AR-A211 -
DRAWN AB
CHK HL
ISSUE

ALL LEVELS AREA INDICATIVE AND SHOULD BE READ IN CONJUNCTION WITH CIVIL ENGINEERS DRAWINGS FOR FINAL LEVELS OF ALL EXISTING/PROG.
ALL LEVELS SHOWN TO BE ±100mm