

Nepean Hospital and Integrated Ambulatory Services Redevelopment Stage 2

Signage SEARS Responses

23.08.21
Issue B

Contact

Adam Longo
Head of Urbanite

Urbanite Pty Ltd

(Part of the Frost*collective)
ABN 71 169 539 208
Tel +612 8318 9800
adam.longo@urbanite.com.au
urbanite.com.au

© Urbanite. Proprietary & confidential information.
All rights reserved. All information commercial in confidence
and is not to be disclosed to other parties other than with
the written agreement of Urbanite.

Contents

Executive summary and response to SEAR’s requirements	3
Section 1: External Identification Signage	5
Section 2: Indigenous Interpretation Signage	7
Appendix 1: External Identification Sign Details	9

Exec Summary & SEARS responses

Health Infrastructure NSW (HI) is the applicant for the proposed Stage 2 Redevelopment of Nepean Hospital in Penrith Local Government Area (LGA).

The proposal is State Significant Development (SSD) for the purposes of the Environmental Planning and Assessment Act 1979 (EP&A Act) and clause 14(a) of Schedule 1 of the State Environmental Planning Policy (State and Regional Development) 2011 (SEPP SRD) as it involves development for the purposes of a hospital with a capital investment value in excess of \$30 million.

The Stage 2 Redevelopment seeks to deliver significantly enhanced acute services, as well as a new campus main entry and drop-off area. It complements the recent Stage 1 Redevelopment (SSD 8766) approved in February 2019 and due for completion by early 2022.

The proposed Stage 2 Tower will be located west of, and connected to, the Stage 1 Tower. Portions of the North Block (north section) will be demolished with the remaining sections of the North Block (to the south of the Stage 2 Tower) to remain operational.

Departments to be provided in the Stage 2 Tower include:

- Front of House, including retail;
- Education and Training Centre;
- Transit Lounge;
- Medical Imaging;
- Interventional Radiology;
- Intensive Care Unit and Close Observation Unit;
- In-Centre Dialysis and Renal Inpatient Unit;
- Paediatric In-patient Unit;
- Plant areas;
- Clinical Support areas; and
- Kitchen.

The Stage 2 Redevelopment project scope includes:

- The Stage 2 Tower, being predominantly a 7-storey building, with roof plant;
- Demolition of parts of the existing North Block and other satellite buildings directly within the Stage 2 Tower footprint (excluding other buildings already approved under the Stage 1 SSD consent);
- Demolition of the Total Asset Management (TAM) facility;
- Reconfiguration of the loading dock area and back of house functions;
- Landscaping and other associated at-grade works within the Stage 2 Tower's immediate vicinity; and
- Barber Avenue upgrade and access road to the Stage 2 Tower's forecourt, port cochere, and front of house area.

The Stage 2 Redevelopment's SEARs was issued by the Department of Planning, Industry and Environment on 22 April 2021.

Exec Summary & SEARS responses

In preparing this report, the following SEARs General Requirements, Key Issues, and Agency's Advice letters have been addressed. The table below sets out the reference or location of these matters within this report.

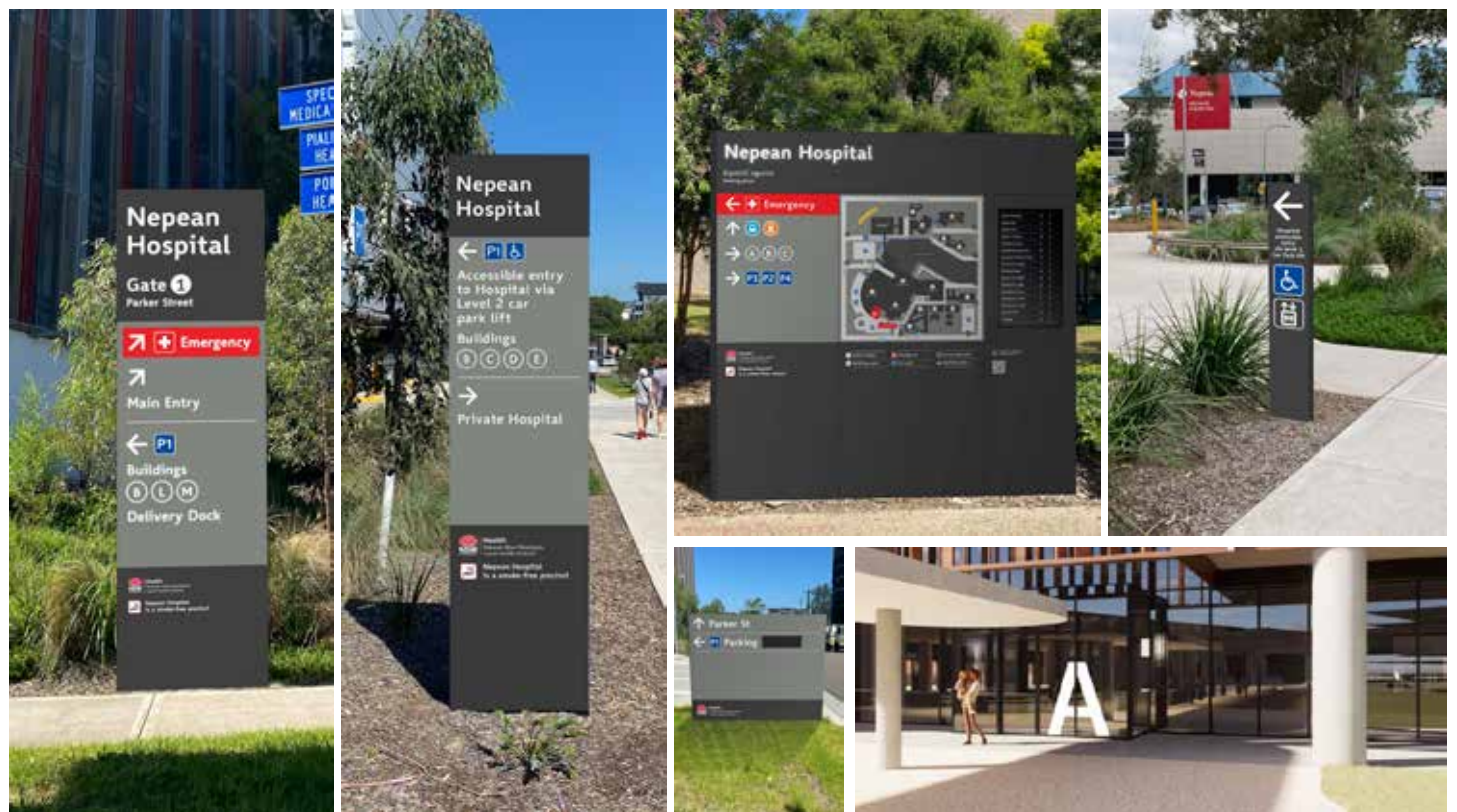
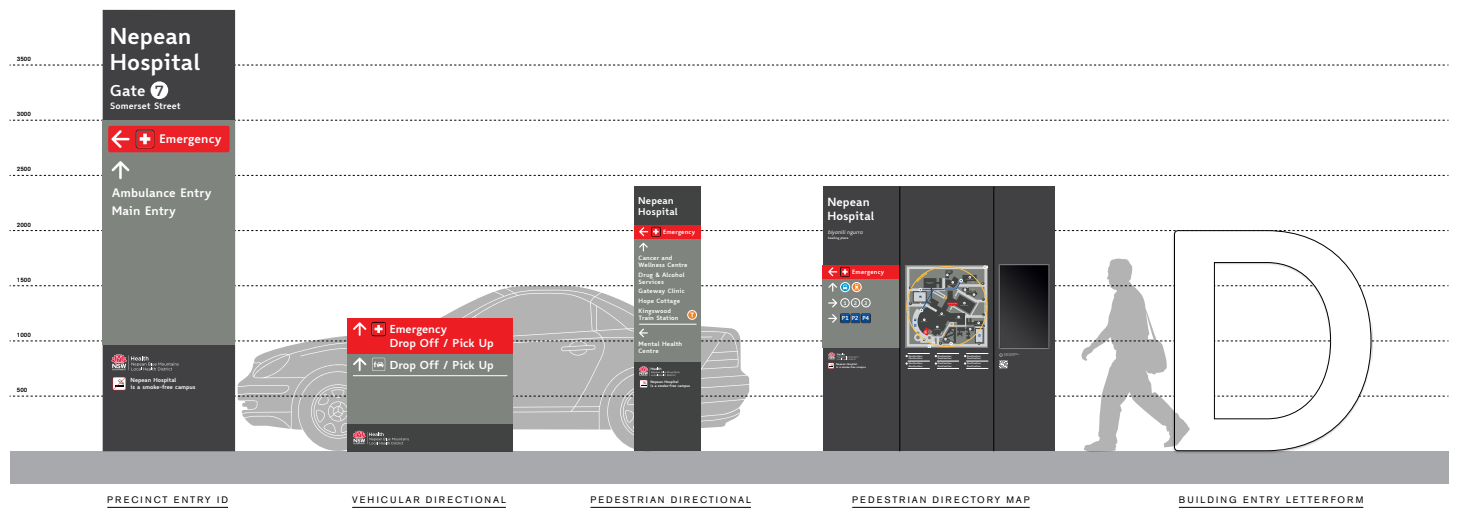
SEARS Requirements	Response - Reference Section
1. General Requirements	Refer to the following:
<ul style="list-style-type: none">• plans and details of any advertising / business identification signs to be installed, including size, location and finishes.	<ul style="list-style-type: none">• Section 1: External Identification Signage• Refer to Appendix 1 - External identification sign details
8. Aboriginal Cultural Heritage	Refer to the following:
<ul style="list-style-type: none">• demonstrates attempts to interpret the Aboriginal cultural heritage significance identified into the development	<ul style="list-style-type: none">• Section 2: Indigenous Interpretation Signage

Section 1 External Identification Signage

1. General Requirements

- plans and details of any advertising / business identification signs to be installed, including size, location and finishes.

All identification signage associated with the Stage 2 development will reflect the recent wayfinding and signage guideline developed for the Nepean Hospital precinct., These signs are of high quality materials, strategically located to provide maximum wayfinding assistance and will refer to the Stage 2 development as "Building A".



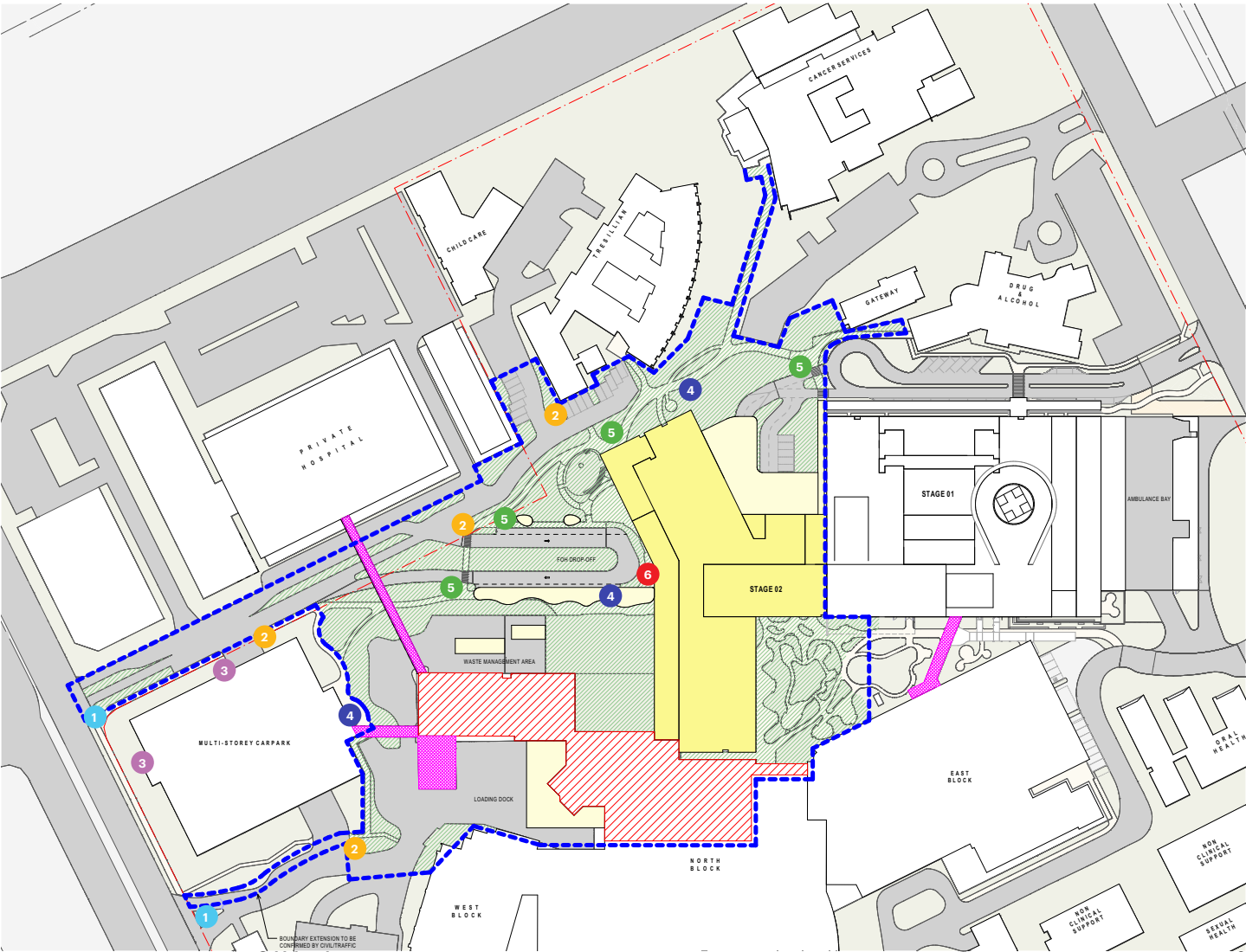
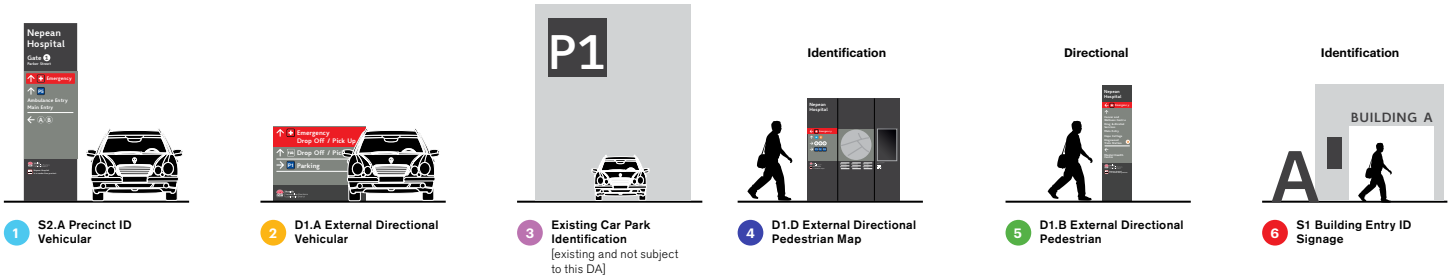
Section 1

External Identification Signage

1. General Requirements

- plans and details of any advertising / business identification signs to be installed, including size, location and finishes.

Located within the Stage 2 development zone, these identification signs range from precinct entry signage at vehicular entry points, to smaller pedestrian mapping and directional signage across the site area, indicating wayfinding information leading to the Stage 2 tower and surrounding areas.



Section 2

Indigenous Interpretation Signage

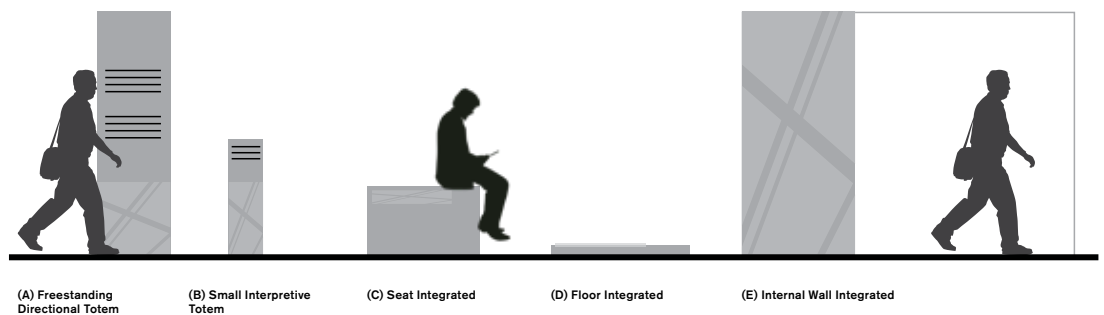
8. Aboriginal Cultural Heritage

- demonstrates attempts to interpret the Aboriginal cultural heritage significance identified into the development

Indigenous interpretive signage and graphics form a large part of the Nepean Hospital redevelopment focus. As part of the Stage 1 tower, internal department identification signage and graphics were developed which included interpretation of indigenous artworks. Similarly, there are a large number of opportunities for more integration of the interpretive signage within the landscaping for the Stage 2 development. This includes elements such as integrated lettering, landscape embedded forms and elements which compliment the landscaping and architecture and provide information and acknowledgement to these indigenous elements.

The 5 signtypes shown here are typically the best forms to integrate cultural narrative due to the key wayfinding positioning of the totem and internal wall (A,E) forms on key circulation paths, while having good integration opportunities into external seating, flooring and garden beds. (B,C,D)

TYPICAL WAYFINDING SIGNS TO INTEGRATE INDIGENOUS NARRATIVE



Section 2 Indigenous Interpretation Signage

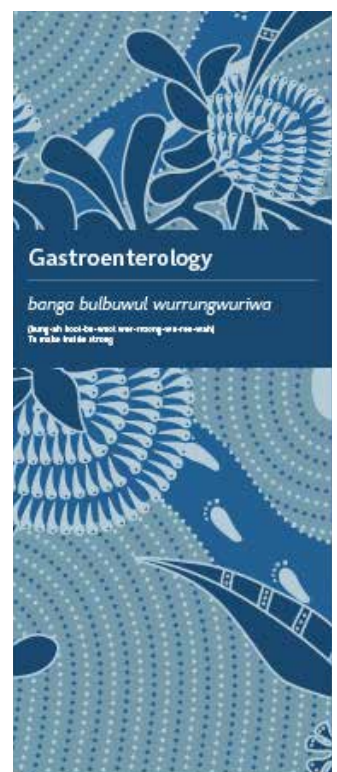
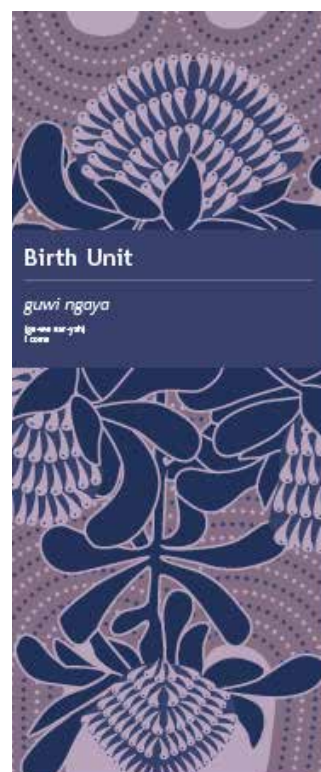
8. Aboriginal Cultural Heritage

- demonstrates attempts to interpret the Aboriginal cultural heritage significance identified into the development

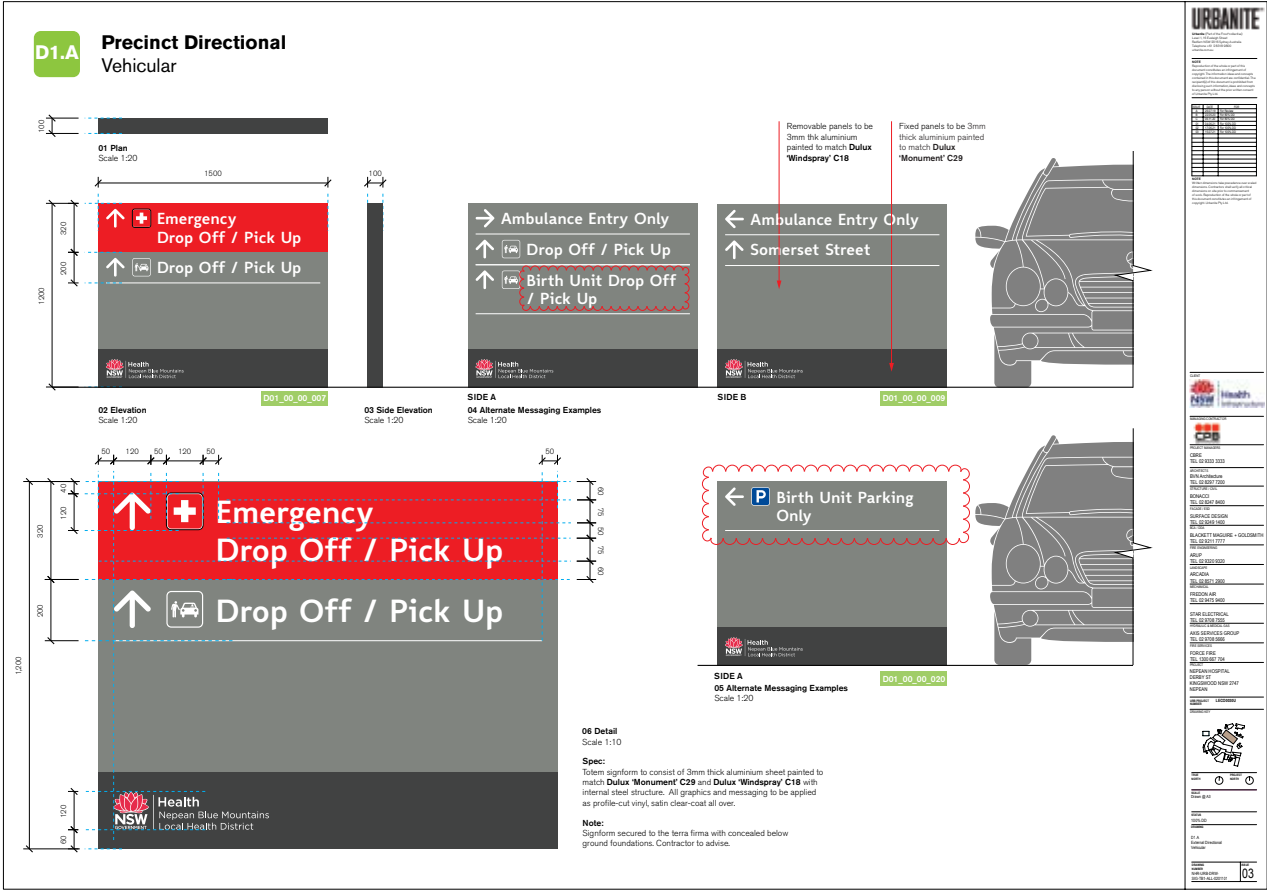
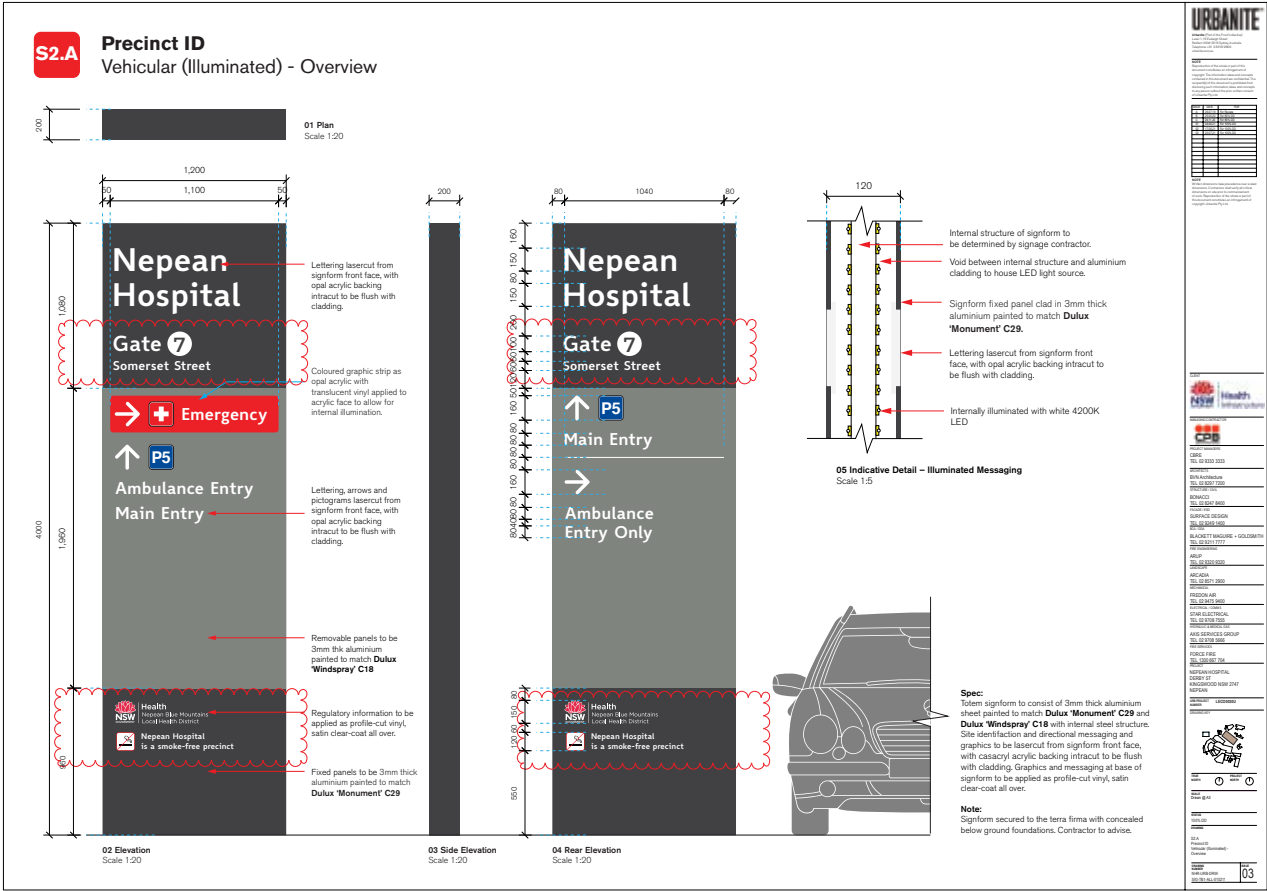
The below shows an example of the current indigenous interpretive signage approach used in the Stage 1 Tower development, which will also be applied to the internal areas of Stage 2. An indigenous artist was commissioned to create an art piece for the lobby space, which was then digitised and translated into indigenous translation department identification signs located throughout the hospital interior.

As part of the Stage 2 works art strategy, this same approach can be applied to other key artworks to help strengthen and expand the indigenous narrative both within the interiors and the exterior areas of the project.

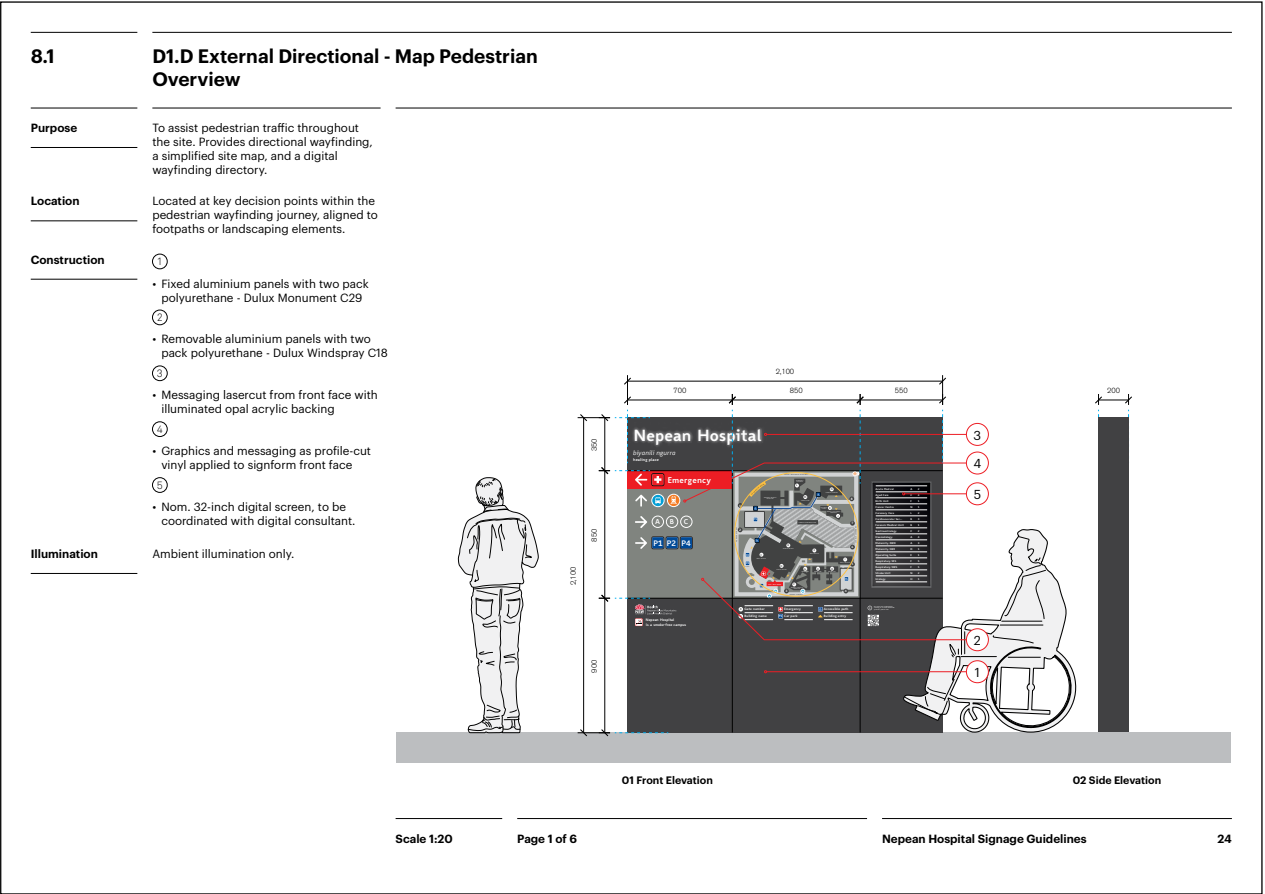
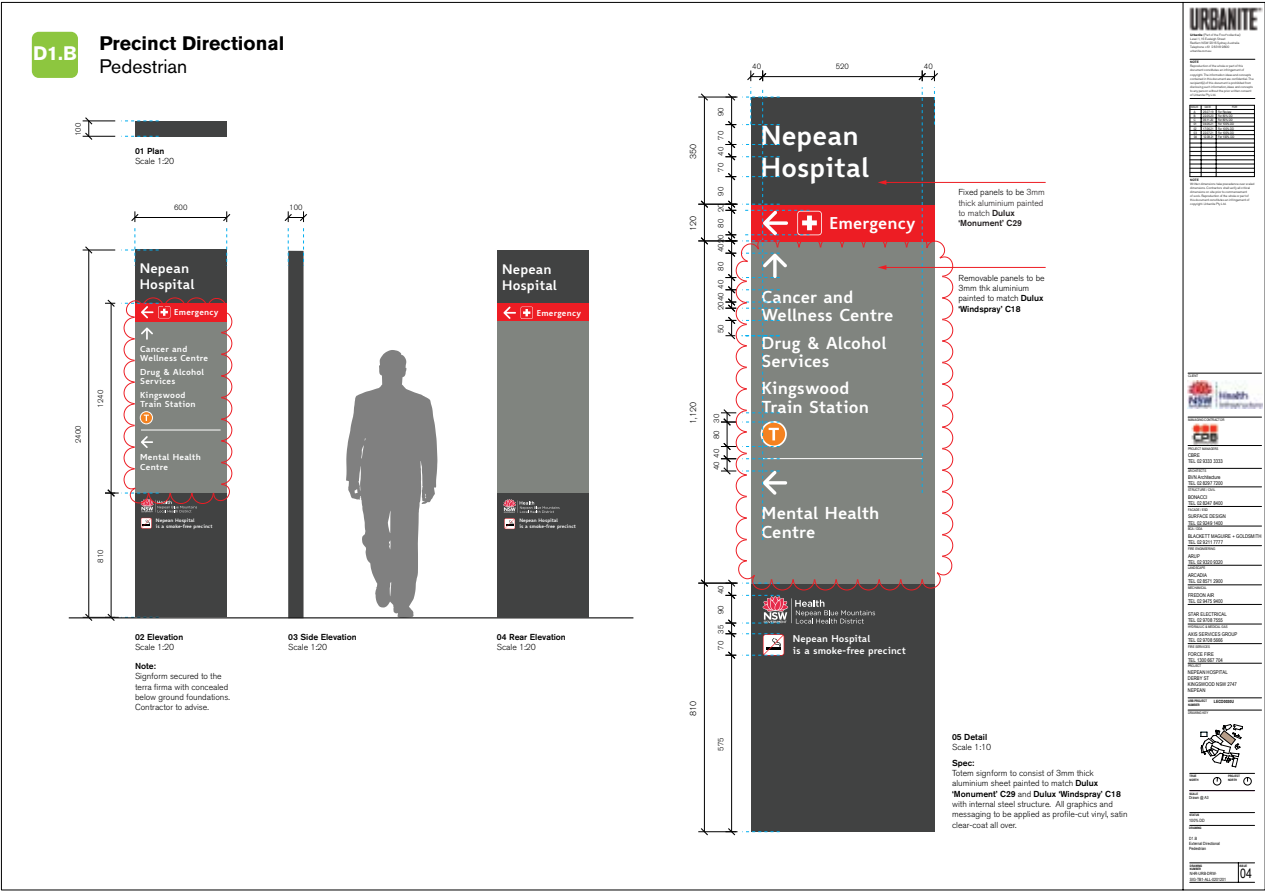
The signtypes indicated below now represent a consistent application to be utilised across all buildings within the Nepean Hospital precinct.



Appendix 1



Appendix 1



Appendix 1

SKY SIGN EXPLORATIONS

Option 5

Hospital sky sign as face-illuminated lettering mounted to the entry facade above the plant level. This option will be easily visible from all angles of approach, and integrates well into the facade architecture.

WEST ELEVATION 1:200

HERMÈS

MALMIN NOVA

LONGCHAMP

PROPRIETARY AND CONFIDENTIAL INFORMATION © URBANITE® 2019

Thank you

Urbanite Pty Ltd

(Part of the Frost*collective)
ABN 71 169 539 208
Level 1, 16 Eveleigh Street
Redfern NSW 2016
Sydney, Australia
www.frostcollective.com.au

Carlo Giannasca

Managing Director
Tel +61 2 411 204 313
carlo.giannasca@urbanite.com.au

Adam Longo

Head of Urbanite
Tel +61 422 698 055
adam.longo@urbanite.com.au