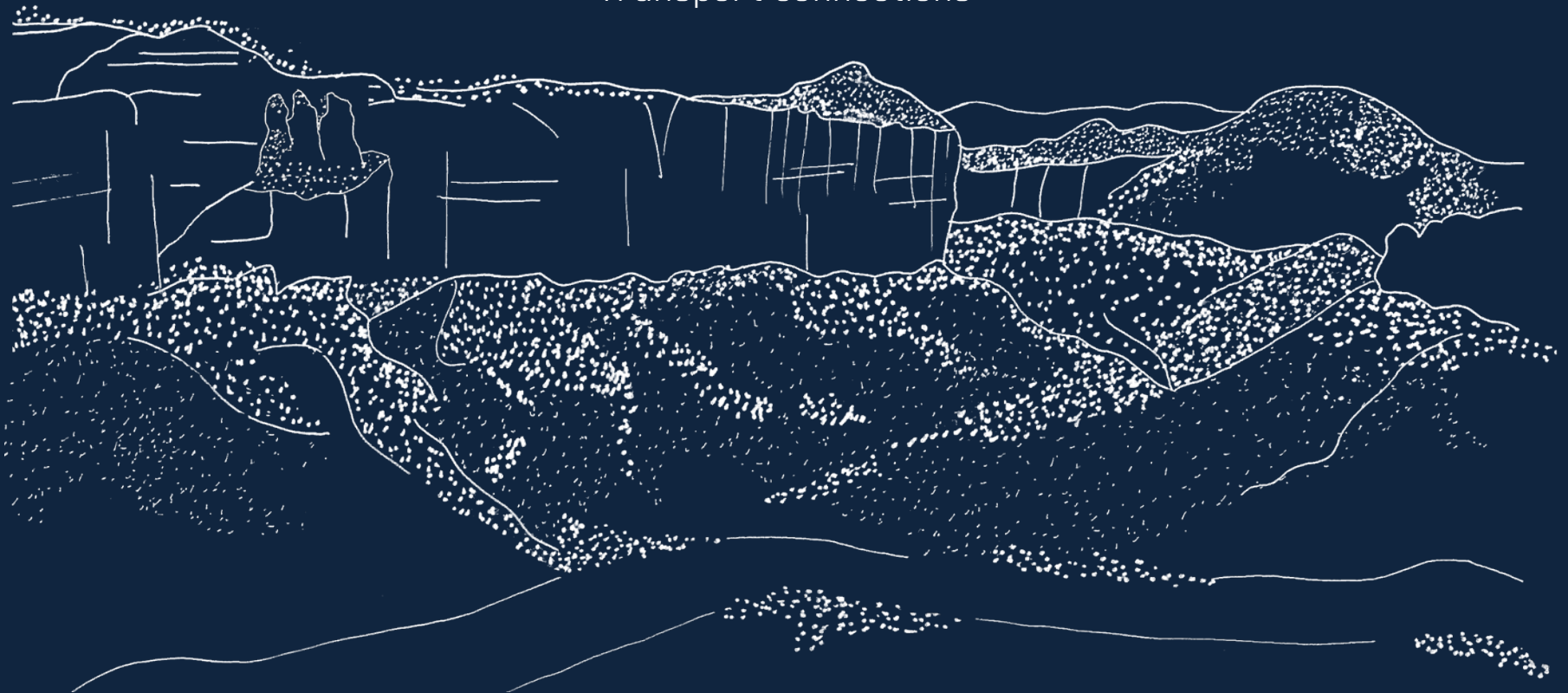


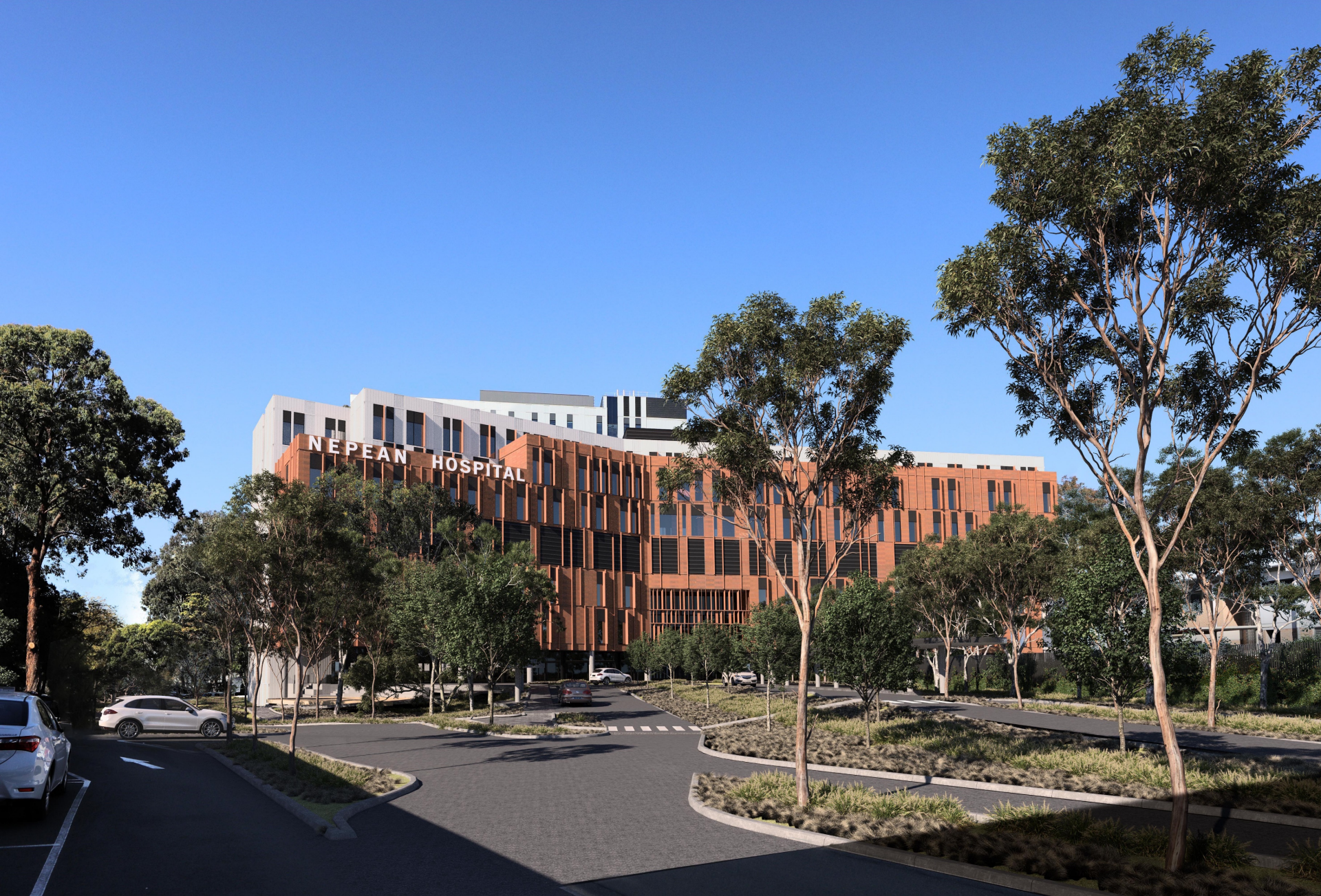
NEPEAN HOSPITAL REDEVELOPMENT STAGE 2

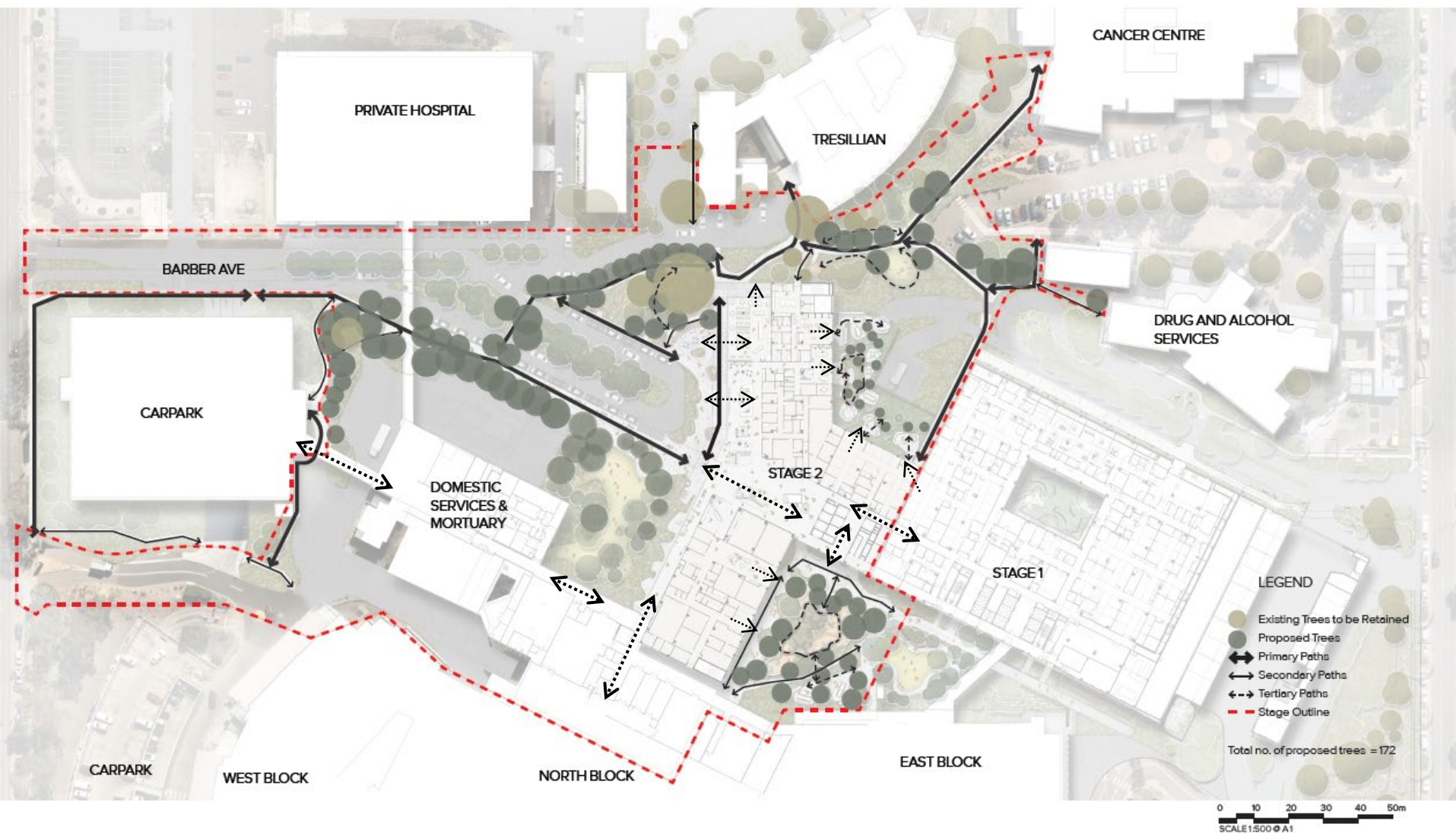
SDRP 03

AGENDA

Connections
Interpretive landscape opportunities
Indigenous arts & culture strategy
Landscape connections
User journey perspective views
Façade Materiality
ESD Principles
Transport connections





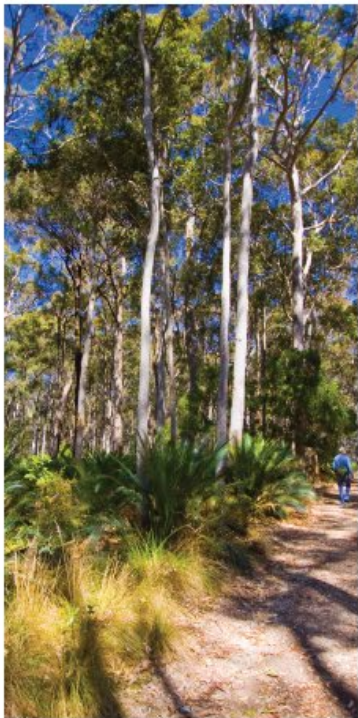
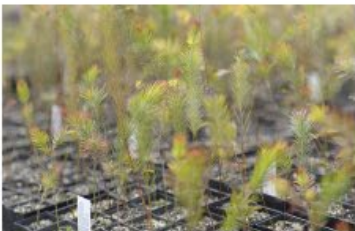




INDIGENOUS MATRIX PLANTING + TREE COPSES

Landscape areas shall be planted with a random matrix of endemic shrubs, grasses, and groundcovers which feature in the local Cumberland Plain Woodland community. The landscape within the Nepean Hospital will thus become an important link in the local ecological communities.

Tree planting will be comprised entirely of endemic species such as *Eucalyptus moluccana*, *Eucalyptus tereticornis*, and *Corymbia maculata*. Implementing a planting composition that encourages natural competition and varied growth rates creating a many-layered canopy, creating a naturalistic native landscape aesthetic, and a pedestrian experience of being amongst the native bushland of the nearby Blue Mountains National Park.



GUIDING PRINCIPLES

When positioning and incorporating indigenous signage and narrative into wayfinding, it is important that each piece should aim to further the overarching wayfinding narrative principles developed for wayfinding integration throughout the site.

Acknowledgment of indigenous culture

The inclusion of indigenous signage expressions in the building and landscape represents a **mark of respect for the Traditional Custodians**, their Country and their history. It demonstrates that we are **embracing indigenous culture and its connection to country**.

Maintenance of indigenous culture

There is an opportunity to provide a **platform to preserve and propagate** the culture within a contemporary context. Furthermore, the creation process enables us to **engage and collaborate** with the local indigenous community – a sort of **'inclusion fusion'**.

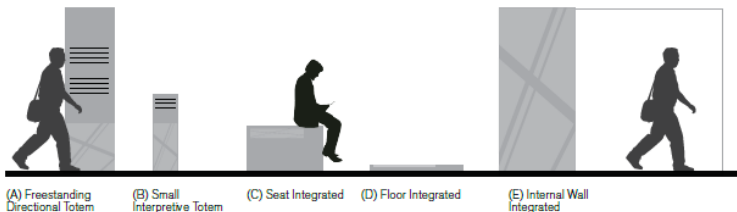
Promoting inter-generational learning

It is important that our country's **rich indigenous cultural heritage is preserved** and is not lost to future generations. Combining indigenous words and art on signage facilitates communication on two levels. Stories can be shared that **relate specifically to the location** that will resonate more strongly.

Contribution to well-being

It is widely acknowledged that the **incorporation of artwork in an environment enhances well-being** and contributes to an accelerated healing process.

TYPICAL WAYFINDING SIGNS TO INTEGRATE INDIGENOUS NARRATIVE



The 5 signtypes shown here are typically the best forms to integrate cultural narrative due to the key wayfinding positioning of the totem and internal wall (A,E) forms on key circulation paths, while having good integration opportunities into external seating, flooring and garden beds. (B,C,D)

INTEGRATION WITH LANDSCAPE & ARCHITECTURE

Opportunities exist to incorporate indigenous signage and content into the landscape elements. The content can be encased within ground paving, seating and other elements to achieve an integrated and responsive cultural narrative within the landscape.



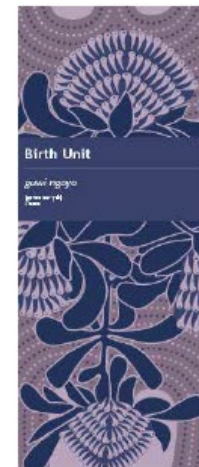
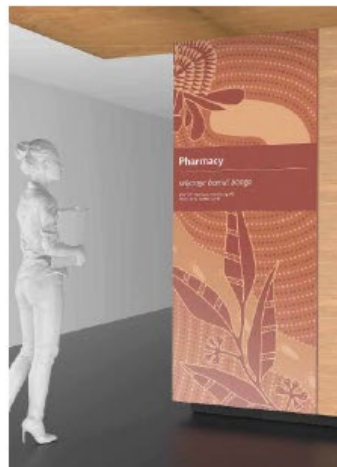


Artist Nicole Law in her studio creating artworks for Stage 1.



The Process

Urbanite has developed a number of indigenous signage within the Stage 1 Tower to identify department locations. This process involved the collaboration with an indigenous artist and stakeholder group with the process outlined below.



PROJECT	SITE	DESCRIPTION	CURATORIAL FRAMEWORK			
			Shades of a Vast Landscape	Healing + The Land	Indigenous Heritage	Vibrant Cultures
PROJECT 1. Suspended Sculpture	Internal FOH void	Major suspended sculptural installation to hang within the front of house void space. Visible from multiple floors this commission will provide a dynamic and welcoming entry experience	▼	▼		
PROJECT 2. Internal Walls Artwork	Graphic wall artworks for clinical and public spaces	Artwork will create a visual journey from lift lobby to clinical spaces, creating a unique visual identity for each floor and assisting intuitive wayfinding	▼	▼		
PROJECT 3. Indigenous Walk + Multi-purpose Room	Exterior walkway, entry portal facade and Aboriginal Multi-purpose room	Indigenous heritage to be explored through graphic artwork elements to be integrated with building architecture			▼	
PROJECT 4. Paediatric Artwork	Paediatric Ward	Fun and interactive artworks in a range of forms to provide an immersive experience for children and their carers. Forms may include sculpture, digital, soft furnishings and art making activities	▼	▼		▼
PROJECT 5. Community Engagement Artwork	Outdoor tile artwork integrated with stairs	Art making workshops with a professional artist. Artist will develop a contemporary integrated artwork concept which will be informed by ideas from workshop participants			▼	▼
PROJECT 6. Performance Space	Exterior courtyard	An outdoor stage integrated with landscape dedicated for performing arts, cultural activities and ceremonies	▼	▼	▼	▼



VENESSA POSSUM *ngurra bayali*



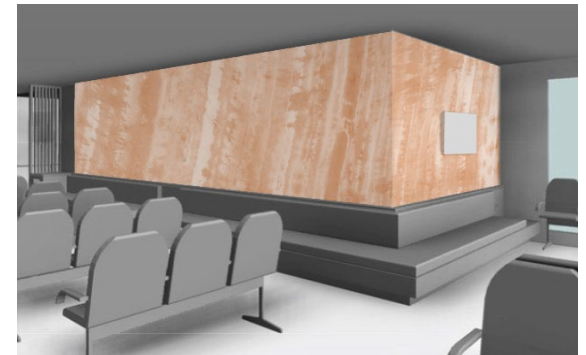
CURATORIAL BRIEF

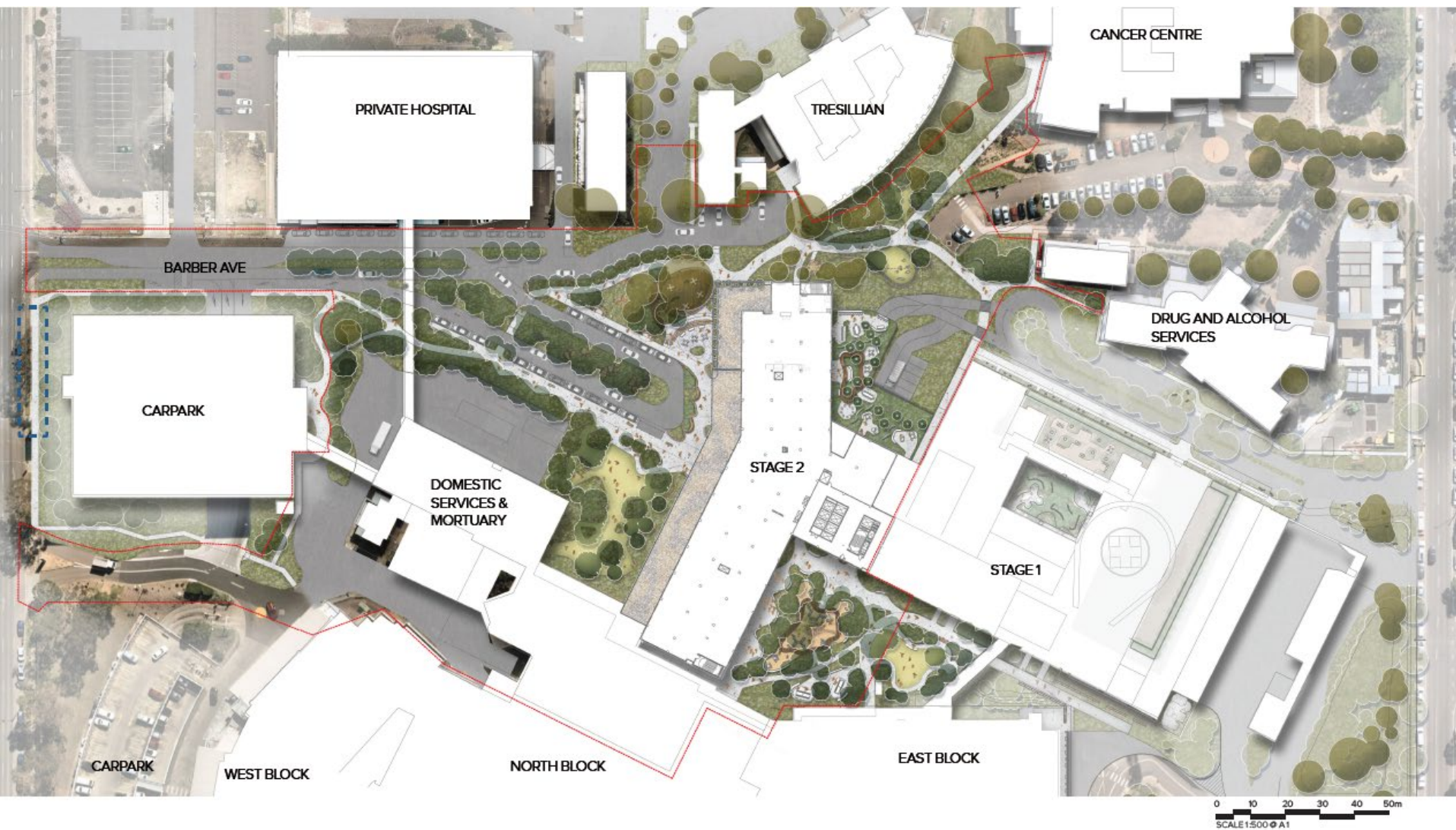
Venessa Possum, *ngurra bayali* (Country speaking) is the proposed commissioning of public art for the Nepean Hospital Emergency Department waiting room.

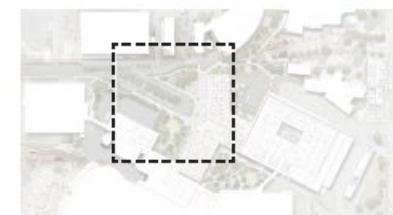
The photographic digitisation of traditional bush dye will be fabricated to maintain an air of calmness. Likewise, the earthly colour will echo the natural world and be complimentary to the architectural concept design and material palette.

The works will provide a textured yet subtle environment, the tone, colour and detail can be adjusted to suit a particular area of intension, noting a significant cultural messaging of ancestral healing, which is adding to the aim of distracting viewers from their potential fears, worry and pain.

The patterns are directional and as such can be creatively manipulated to suit each area of architecture. For example, diagonal patterns will lead the visitor along a corridor as wayfinding, whereas details will be selected for areas designed for more ambience space where people will sit and wait.



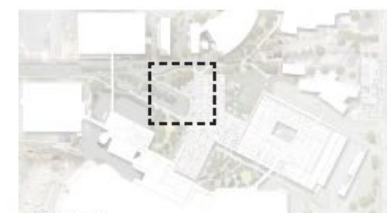




KEY PLAN LEGEND

1. Shelter design to be coordinated with Architect and Public Art
 2. Forest entry landscape character
 3. Raised decking around existing tree for communal break out space. To be further coordinated with Architects
 4. Ramped driveway at a grade allowing for accessibility path adjacent. Drop off to be further coordinated with Architects and Traffic Engineers
 5. Forecourt
 6. Ramped elevated boardwalk amongst existing trees
 7. Basin capturing water run off for treatment
 8. Open turf space
 9. Existing Waste Management
 10. Stair access to level below. To be further coordinated with Architects.
 11. Sheltered drop off/pick up pods
 12. Relocated Flagpole
 13. Screening plants to provide a buffer to the waste area
 14. Raised landform and planting to limit visual connection to waste area
 15. Sculptural Sandstone Seating and Planter
 16. Proposed Bicycle Parking (10 Spaces)
- Scope of Works line





KEY PLAN

LEGEND

1. Shelter design to be coordinated with Architect and Public Art
2. Forest entry landscape character
3. Raised decking around existing tree for communal break out space. To be further coordinated with Architects
4. Sculptural Sandstone Seating and Planter
5. Forecourt
6. Ramped elevated boardwalk amongst existing trees
7. Raised landform and planting to limit visual connection to waste area
8. Open turf space
9. Vegetated Nodes
10. Stair access to level below.
11. Sheltered drop off/pick up pods
12. Flagpoles

— Scope of Works line

Existing Tree

Proposed Tree

0 8 16 24 32 40m
SCALE 1:400 @ A1



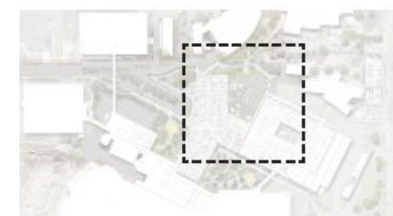
PERSPECTIVE



KEY PLAN

LEGEND


1. Weatherproof continuous canopy over drop off pathway link to main entrance, canopy to incorporate green roof component
2. Filtered views through tall clean trunked trees
3. Raised decking around existing trees for communal break out space
4. Ramped driveway at a grade allowing for equal access path adjacent
5. Ramped elevated boardwalk amongst existing trees
6. Dry creek bed collecting water run off for treatment, infiltration and movement across site
7. Raised landform and planting to limit visual connection to waste area
8. Sculptural Sandstone Seating



KEY PLAN

LEGEND

1. Stage 1 ED drop off
2. Stage 1 parallel parking
3. The clearing - flexible turf space
4. 3.0m wide pathway
5. Existing trees to be retained
6. Level 1 Transit Lounge Patient Courtyard
7. Level 1 JMO Courtyard
8. Level 1 nominated indigenous rooftop garden
9. Sandstone log retaining wall with landscaping to conceal underground OSD tank
10. Level 01 weathproof canopies
11. Level 01 Shade canopies
12. Yarn Circle
13. BBQ area to be confirmed
14. Screens to limit visual permeability to the existing Gateway Building

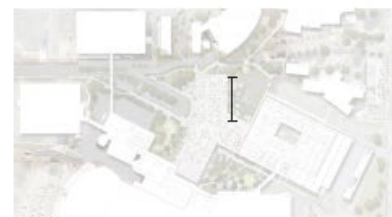
 Emergency Vehicle & Crane Access Route

 Scope of Works line

 Existing Tree

 Proposed Tree

0 5 10 15 20 25m
SCALE 1:250 @ A1



KEY PLAN

LEGEND

1. Shade Canopy
2. Native and endemic matrix planting to enclose places of respite and gathering
3. Yarning circle connected by a meandering walkway
4. Screens to allow privacy

0 2 4 6 8 10m
SCALE 1:50 @ A1



KEY PLAN

LEGEND

1. Timber walkway
2. Communal meeting space
3. Nature play including timber logs, sandstone rocks and other natural amenity
4. Outdoor dining spaces
5. Native garden beds
6. Buffering to internal educational spaces for privacy
7. Education external break out space
8. Existing substation with surrounding buffer planting for screening

--- Scope of Works line

Existing Tree

Proposed Tree

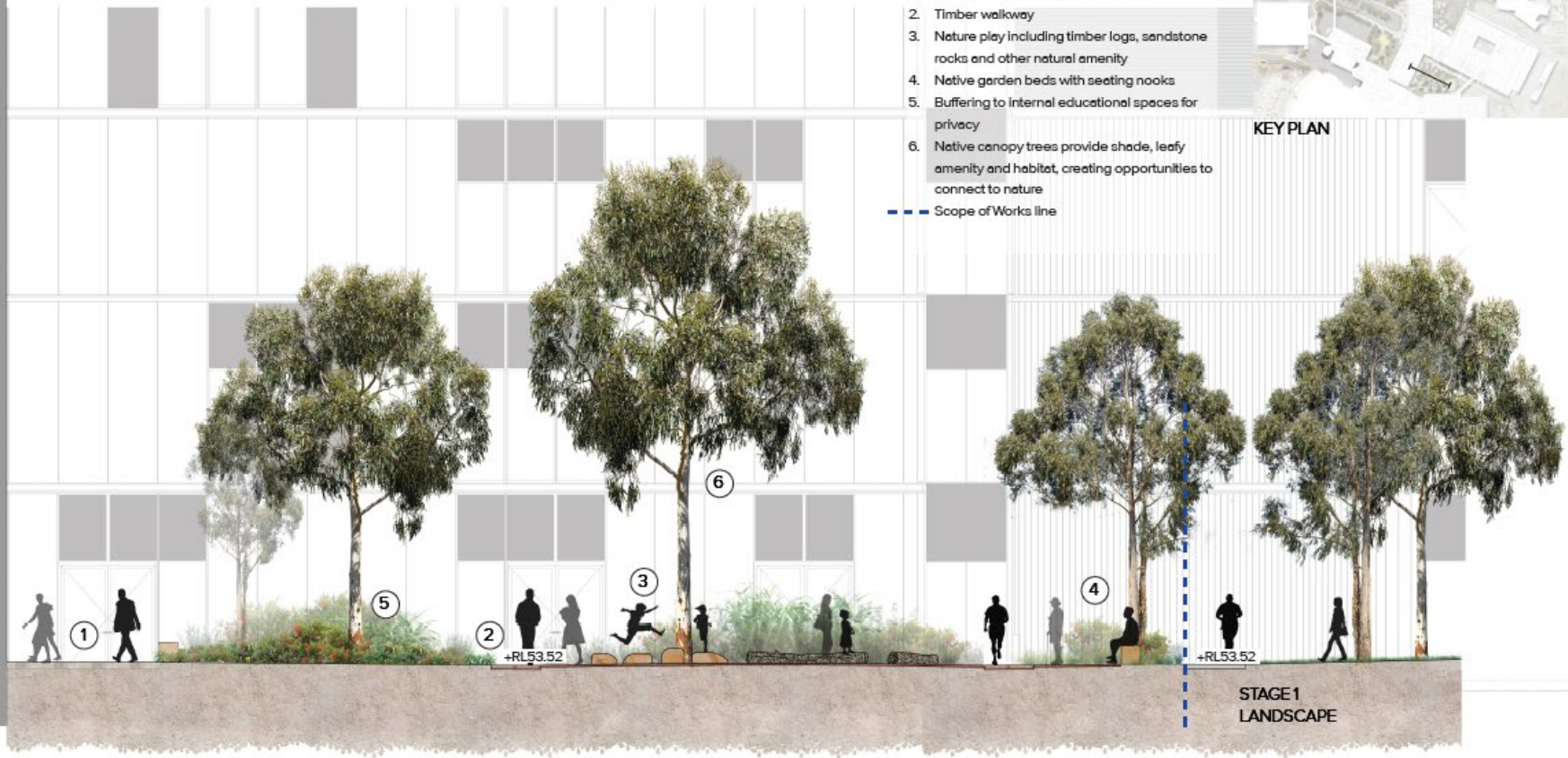
0 5 10 15 20 25m
SCALE 1:250 @ A1

LEGEND

1. Education external break out space
 2. Timber walkway
 3. Nature play including timber logs, sandstone rocks and other natural amenity
 4. Native garden beds with seating nooks
 5. Buffering to internal educational spaces for privacy
 6. Native canopy trees provide shade, leafy amenity and habitat, creating opportunities to connect to nature
- Scope of Works line

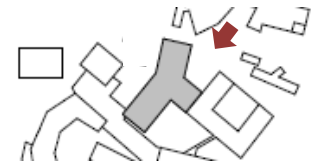


KEY PLAN



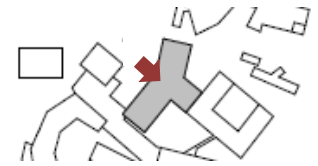
0 2 4 6 8 10m
SCALE 1:50 @ A1



















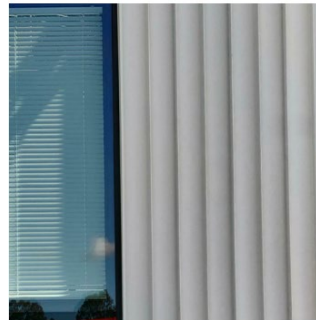
METAL PANEL FACADE

- Similar concept and modularity already used in Stage 1 to allow flexibility



DESCRIPTION:

Substrate on steel frame prefinished "flat" metal cladding, inverted ribs - white

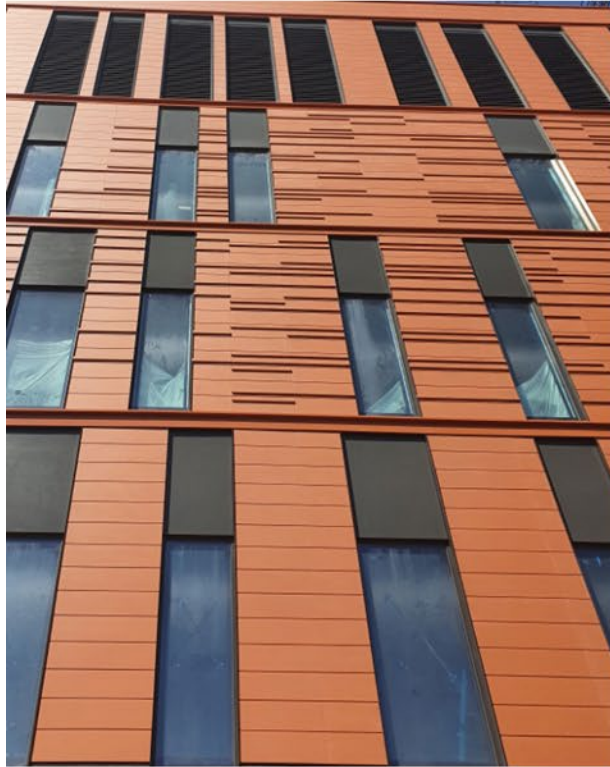


DESCRIPTION:

Substrate on steel frame prefinished "profiled" metal cladding, slender high ribs and broad flat pans- white

TERRACOTTA TILES

- Similar tile and system already used in Stage 1
- Surface finishes from Rustikotta tiles to create variations and give texture to the façade
- Substrate on steel frame with Terracotta Tile system. Façade depth varies to create visual relief



NEPEAN HOSPITAL STAGE 1, BVN

RUSTIKOTTA Collection

The Rustikotta coating system from Templo, is a traditional facade system adapted to an avant-garde production process. Thanks to its high performance this product is resistant to extreme temperatures, stable color and waterproof. The combination of natural clay and special effects on the surface contributes to give the building a special texture.

- Constant colour
- Frost resistance
- Water proof
- Natural materials
- Recycled material



RK-EX1004 - Anthracite
dimensiones: 200x100x10



RK-EX1007 - Light Grey Flamed
dimensiones: 200x100x10



RK-EX1005 - Red Flamed
dimensiones: 200x100x10



RK-EX1010 - Yellow Flamed
dimensiones: 200x100x10

RUSTIKOTTA Colección

El sistema de revestimiento Rustikotta de Templo, es un sistema de fachada tradicional adaptado a un proceso de producción más vanguardista. Gracias a sus altas prestaciones es un producto resistente a temperaturas extremas, de color estable e impermeable. La combinación de arcillas naturales y de efectos especiales sobre la superficie aporta una textura especial al edificio.

- Color estable
- Resistente a la helada
- Impermeable
- Materiales naturales
- Material reciclado



RK-EX1013 - Grunge Flamed
dimensiones: 200x100x10



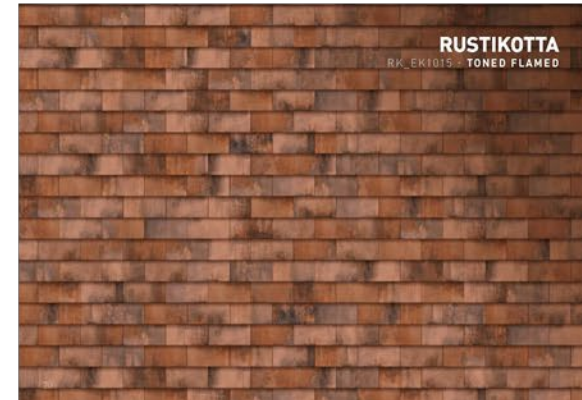
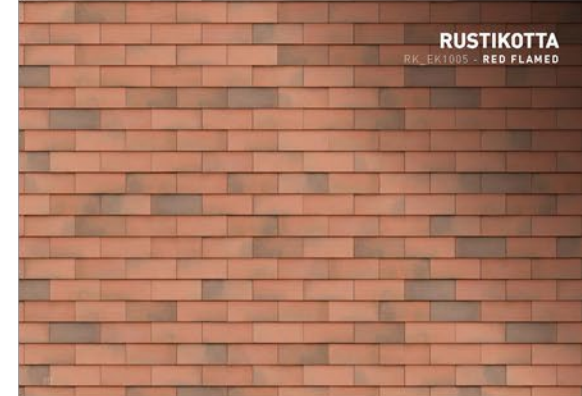
RK-EX1014 - White Splatter
dimensiones: 200x100x10



RK-EX1015 - Toned Flamed
dimensiones: 200x100x10

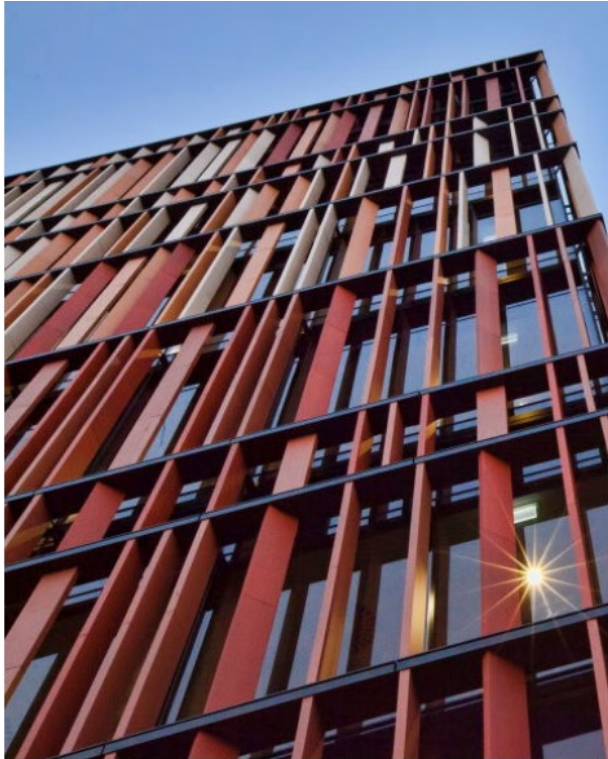


RK-EX1012 - Red Grunge
dimensiones: 200x100x10



SUNSHADE TERRACOTTA LOUVRES

- Sunshade terracotta louvre system with integrated hook system



UNIVERSITY OF NEW SOUTH WALES BIOLOGICAL SCIENCES, WOODS BAGOT

SHOP FRONT GLAZING

- Shopfront glazing system with structural mullion and glass spider fitting. Possible operable panels to be coordinated with mechanical engineer for mixed mode ventilation





Passive Solar Design

- Optimised windows
- Shading devices
- Internal blinds for user-controlled shading



Urban Heat Island Effect Reduction

- Landscape area maximised
- Light-coloured paving materials



Maximise Natural Ventilation Potential

- Mixed-mode system
- High amenity balconies



Highly Efficient Systems

- High efficiency chiller arrangement
- Variable speed fans with economy cycle
- LED lighting throughout with daylight control
- Rooftop PV



Water Sensitive Design

- Water-efficient fittings
- Rainwater collection and reuse



Sustainable Materials

- Low VOC materials
- Recycled and reused materials
- Waste reduction



Social Sustainability and Occupant Wellbeing

- Engagement of Aboriginal Community in design





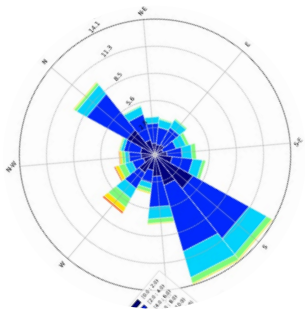
NORTH WEST FAÇADE



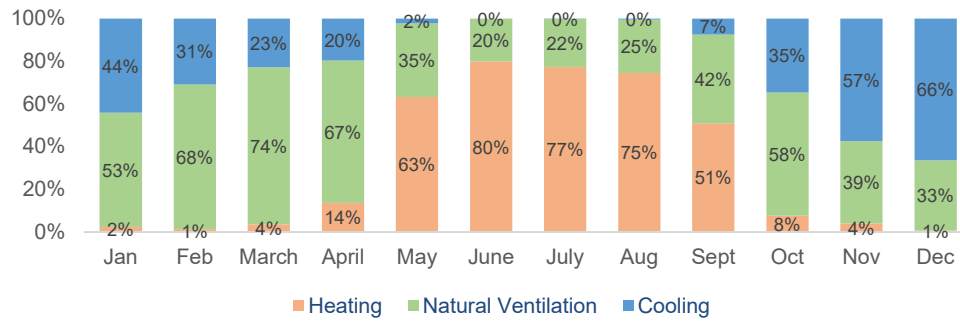
SOUTH EAST FAÇADE



NORTH EAST FAÇADE



Ventilation Mode Frequency



SIGNIFICANT OPPORTUNITY
FOR NATURAL VENTILATION

44% / year

likely to increase to **>50%** as
occupants can accept broader
setpoints when they control their
environment.



L01

Education, FOH & Retail, Clinical Support
Potentially Transit Lounge



L02

Education, FOH and Retail, Clinical Support



L03

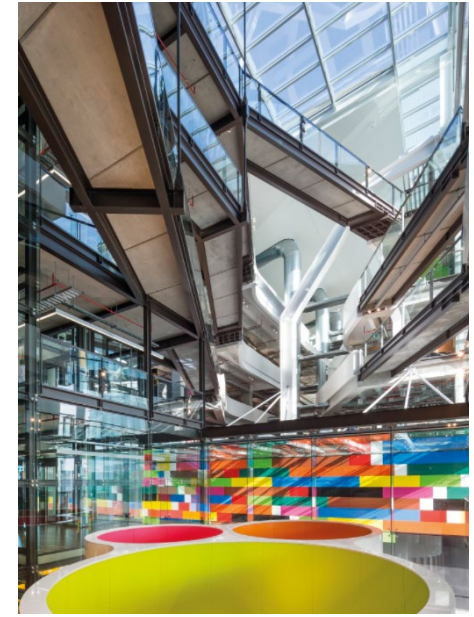
FOH and Clinical Support



Inward opening, automated high level awning windows



Mixed Mode Clinical Support spaces
(North Wharf ASB, Auckland)



Naturally ventilated Atrium space
(North Wharf ASB, Auckland)



Automated operable louvre window system



Mixed Mode Clinical Support spaces
(CSIRO, Canberra)



RED
natural ventilation is not viable



GREEN
natural ventilation is viable

Examples of BMS controls

DISTANCE FROM GREAT WESTERN HIGHWAY
BUS STOP TO FRONT OF HOUSE STAGE 2
APPROX 415m

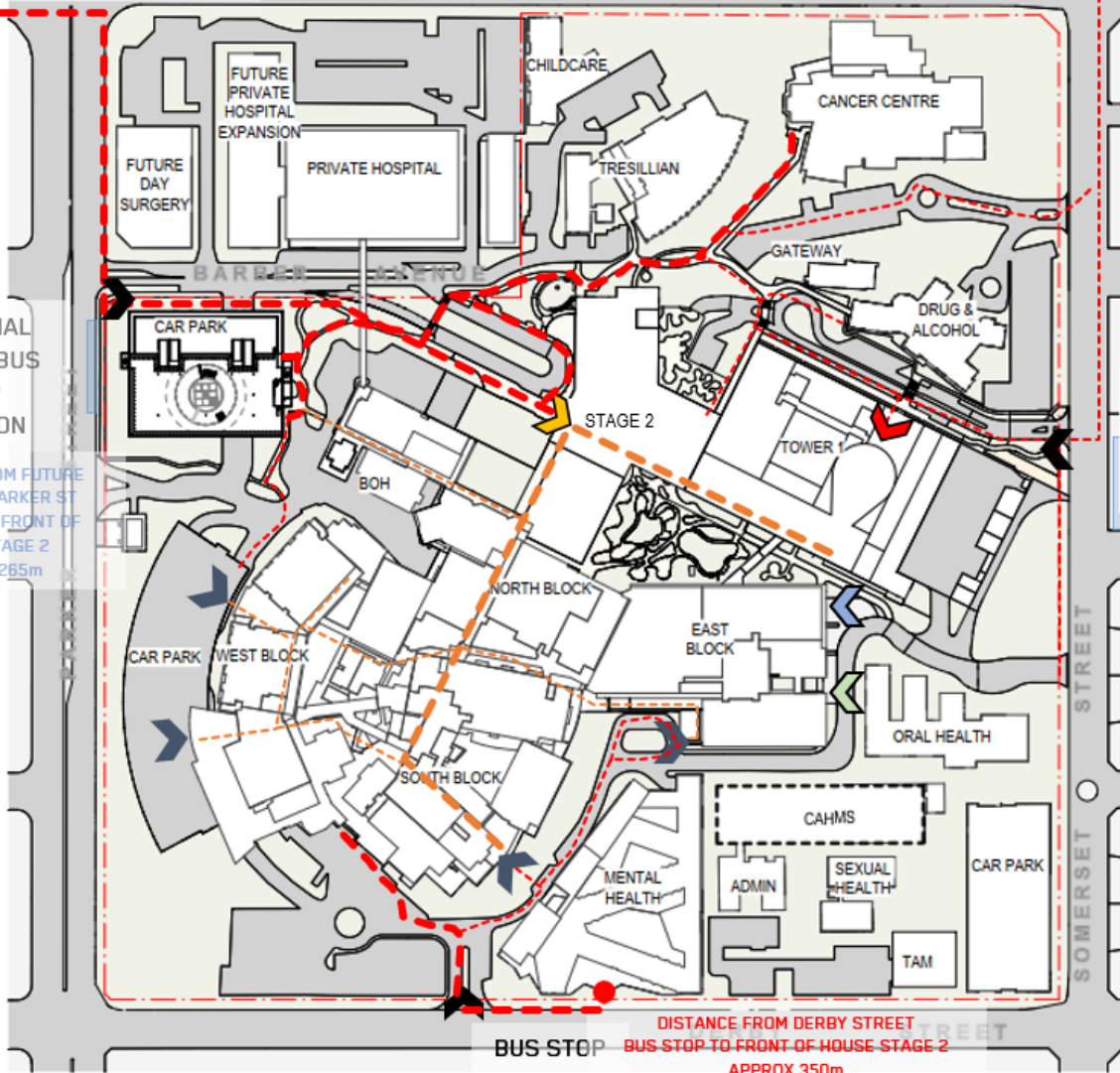
BUS STOP

POTENTIAL
FUTURE BUS
STOP
LOCATION

DISTANCE FROM FUTURE
POTENTIAL PARKER ST
BUS STOP TO FRONT OF
HOUSE STAGE 2
APPROX 265m

GREAT WESTERN HIGHWAY

KINGSWOOD
TRAIN STATION

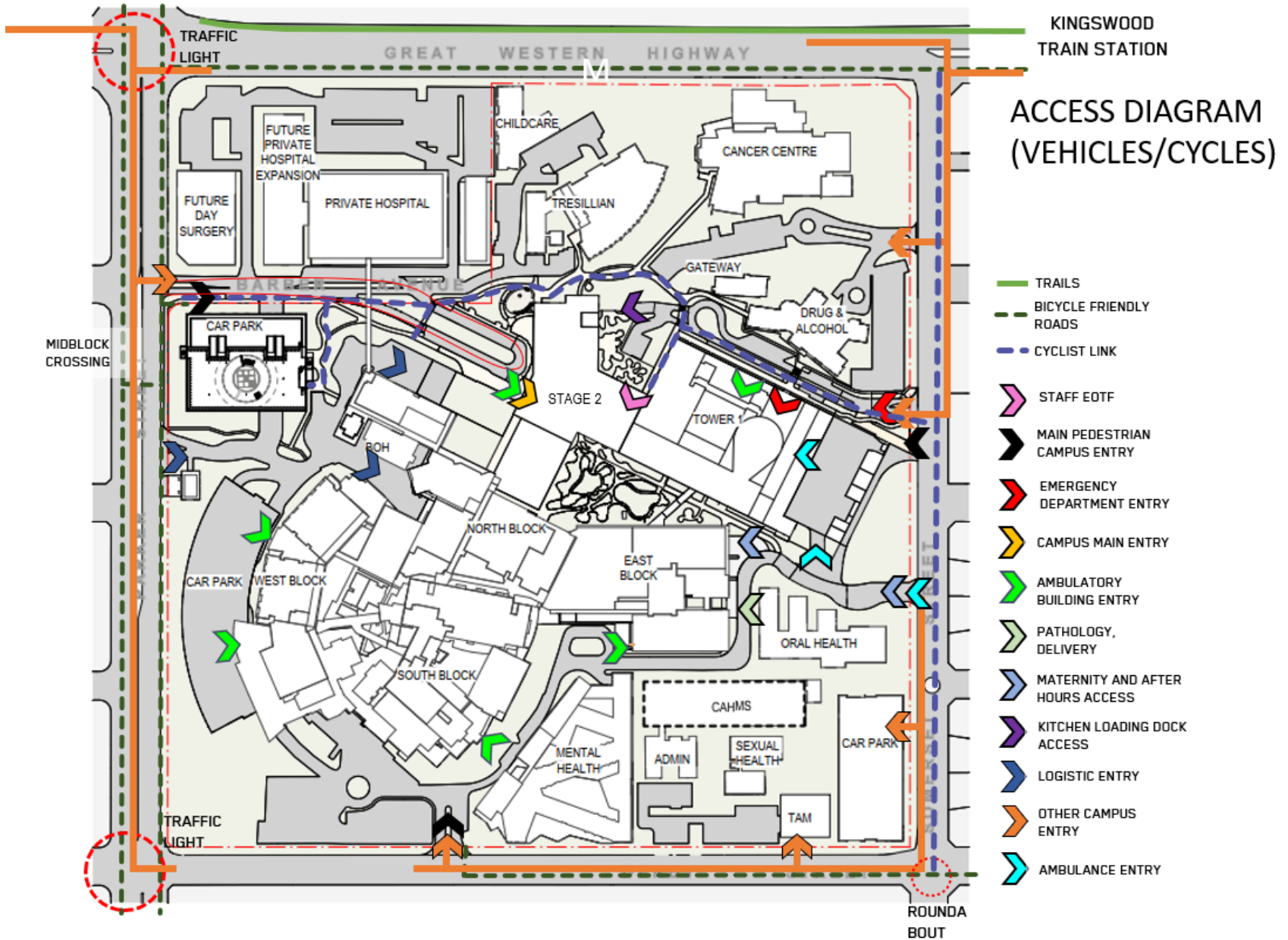


POTENTIAL
FUTURE BUS
STOP
LOCATION

- EXTERNAL PEDESTRIAN LINK
- INTERNAL PEDESTRIAN LINK
- ➡ MAIN PEDESTRIAN CAMPUS ENTRY
- ➡ EMERGENCY ENTRY
- ➡ CAMPUS MAIN ENTRY
- ➡ AMBULATORY BUILDING ENTRY
- ➡ PATHOLOGY, DELIVERY
- ➡ MATERNITY AND AFTER HOURS ACCESS

DISTANCE FROM DERBY STREET
BUS STOP TO FRONT OF HOUSE STAGE 2
APPROX 350m

BUS STOP



THANK YOU