



**NEPEAN HOSPITAL INTEGRATE AMBULATORY SERVICES REDEVELOPMENT
GOVERNMENT ARCHITECT 1ST STATE DESIGN REVIEW**

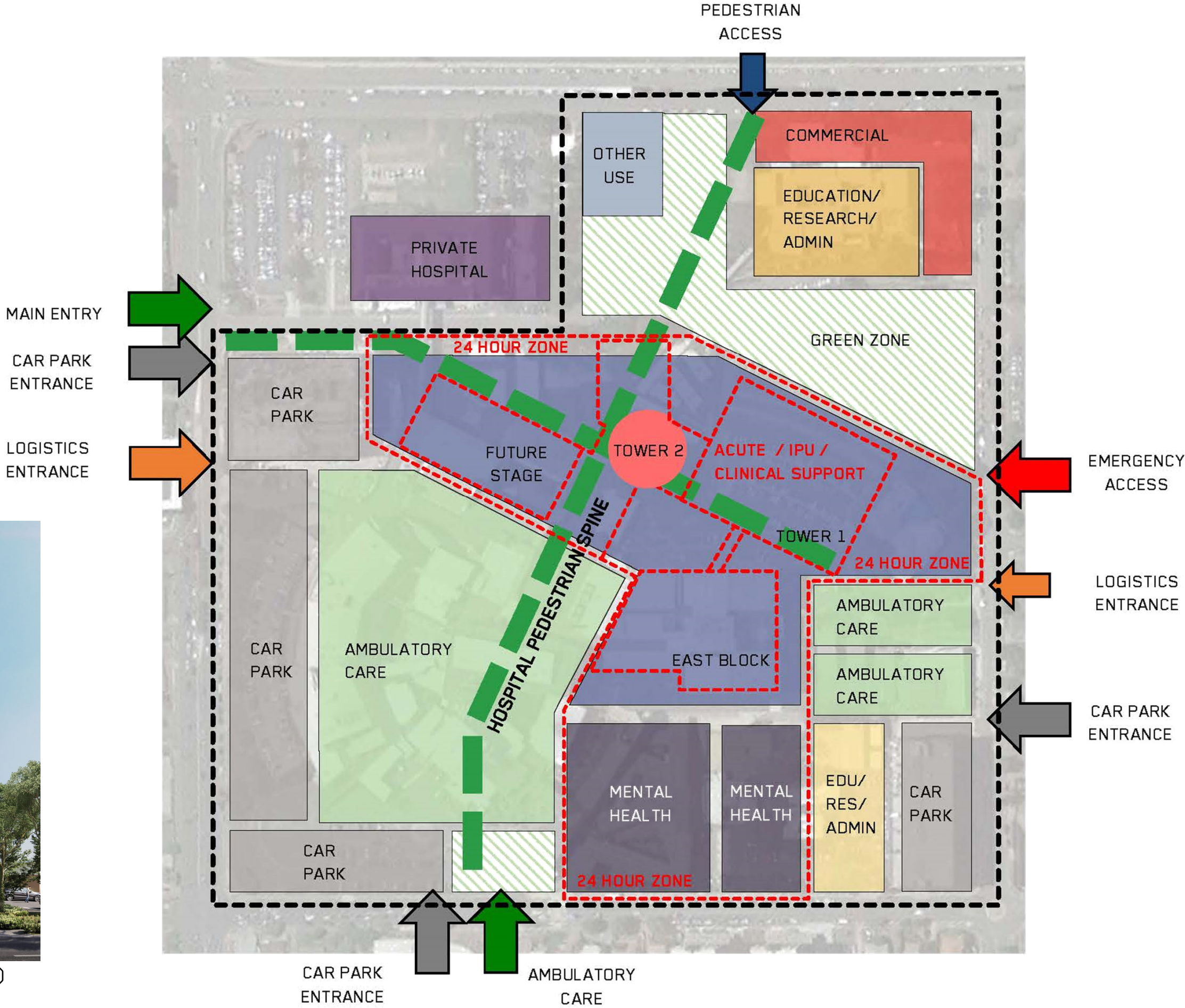
APRIL 2021

ZONAL MASTERPLAN

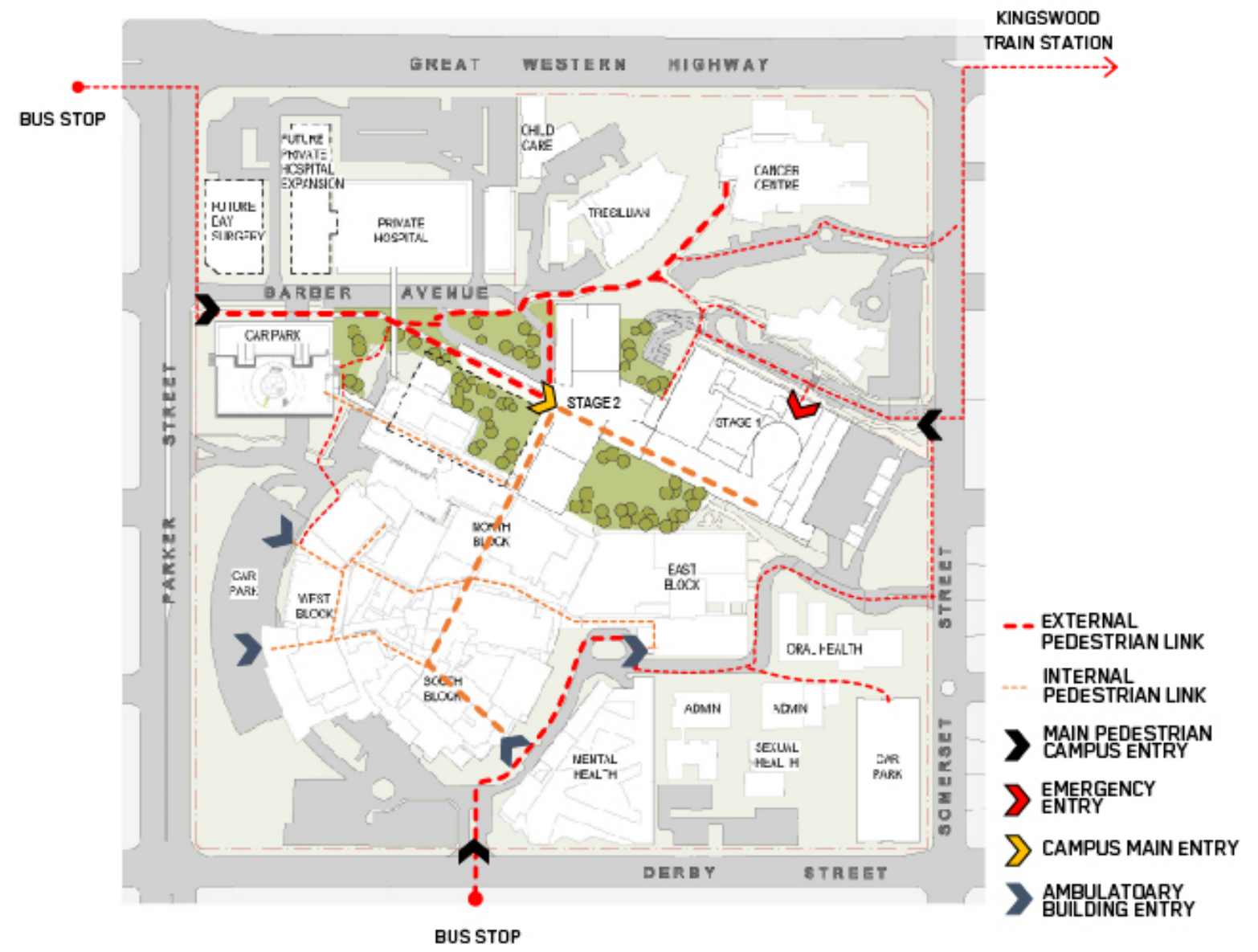
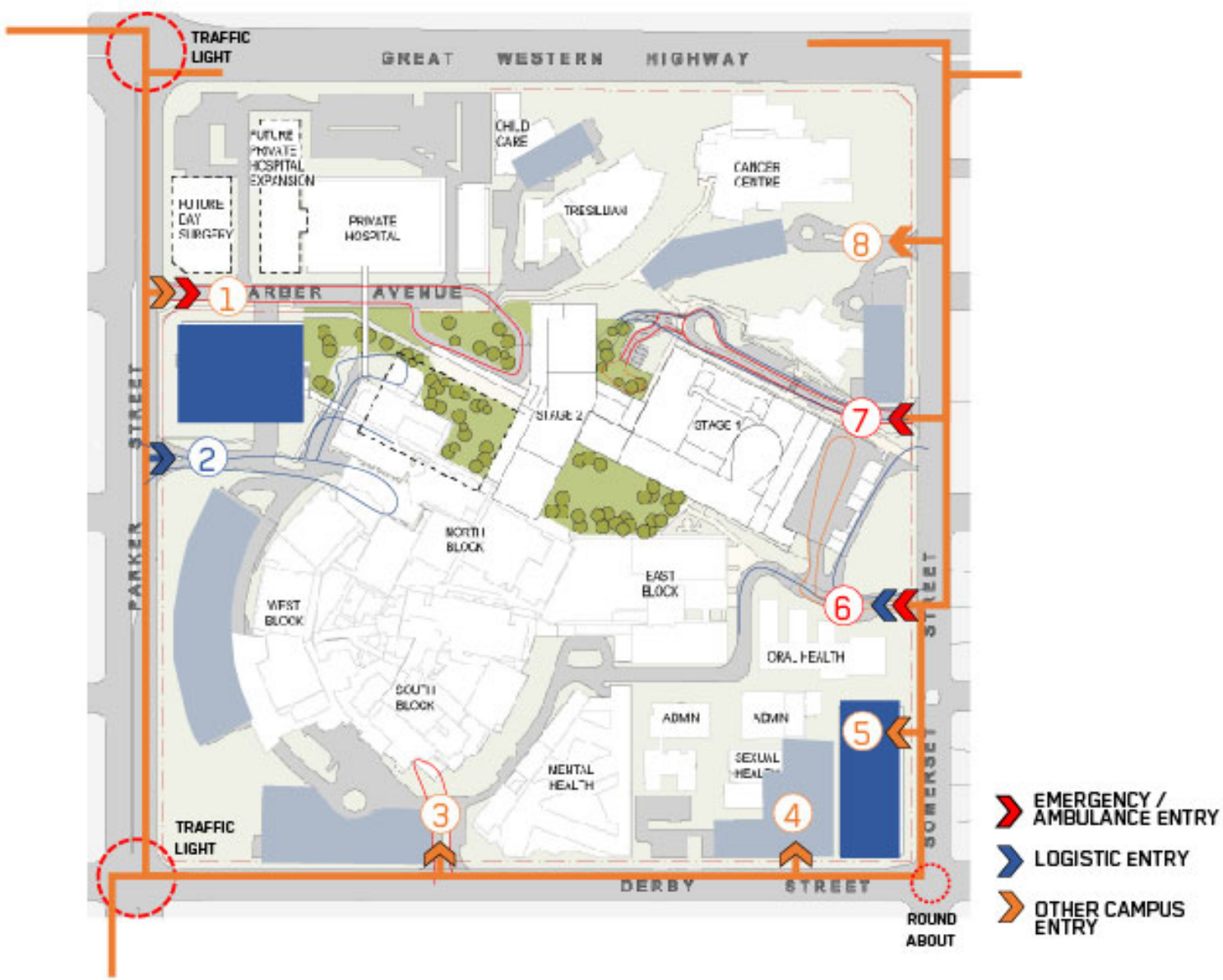
- Acute Services: move into central zone, create vertical connection and increase efficiency
- Inpatient Units and Ambulatory Care Services: consolidate into zones
- Support Services (Clinical and Non-clinical): upgrade to suit campus requirements
- Education: create a dedicated education and research zone and respond to the vision of Penrith Health and Education Precinct



6. Future Tower 1 (Under Construction)



SITE CONTEXT – PEDESTRIAN AND VEHICLE ACCESS



3D VIEWS



3D View - Stage 2



3D View - Stage 1-2



3D View - Stage 1-2 North Elevation



3D View - Stage 1-2 South Elevation

3D VIEWS, BLOCK & STACK AND SECTION

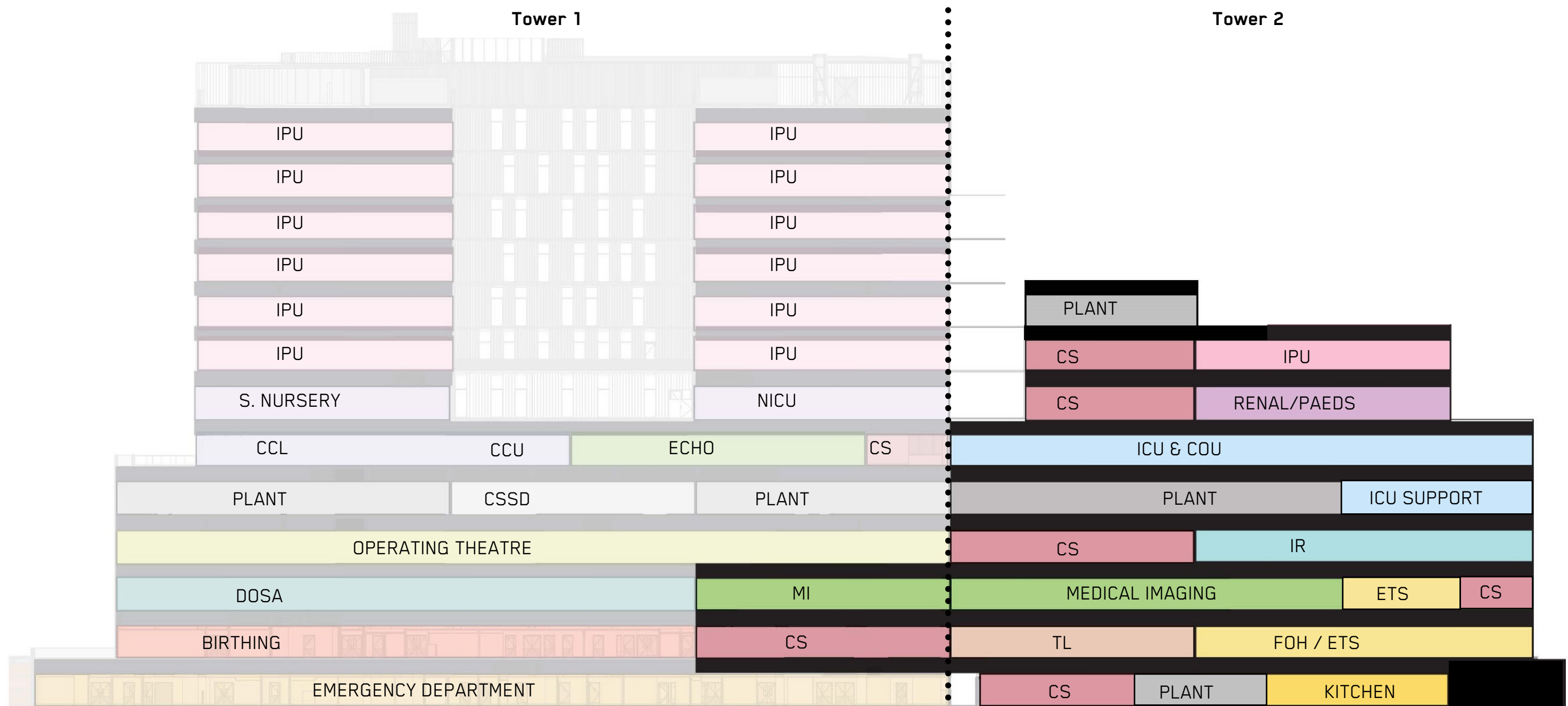
The Stage 2 project scope mainly consists of

- construction of Tower 2
- Shell space fit-out in Tower 1
- Refurbishment and repurposing of existing campus.

Acronyms:

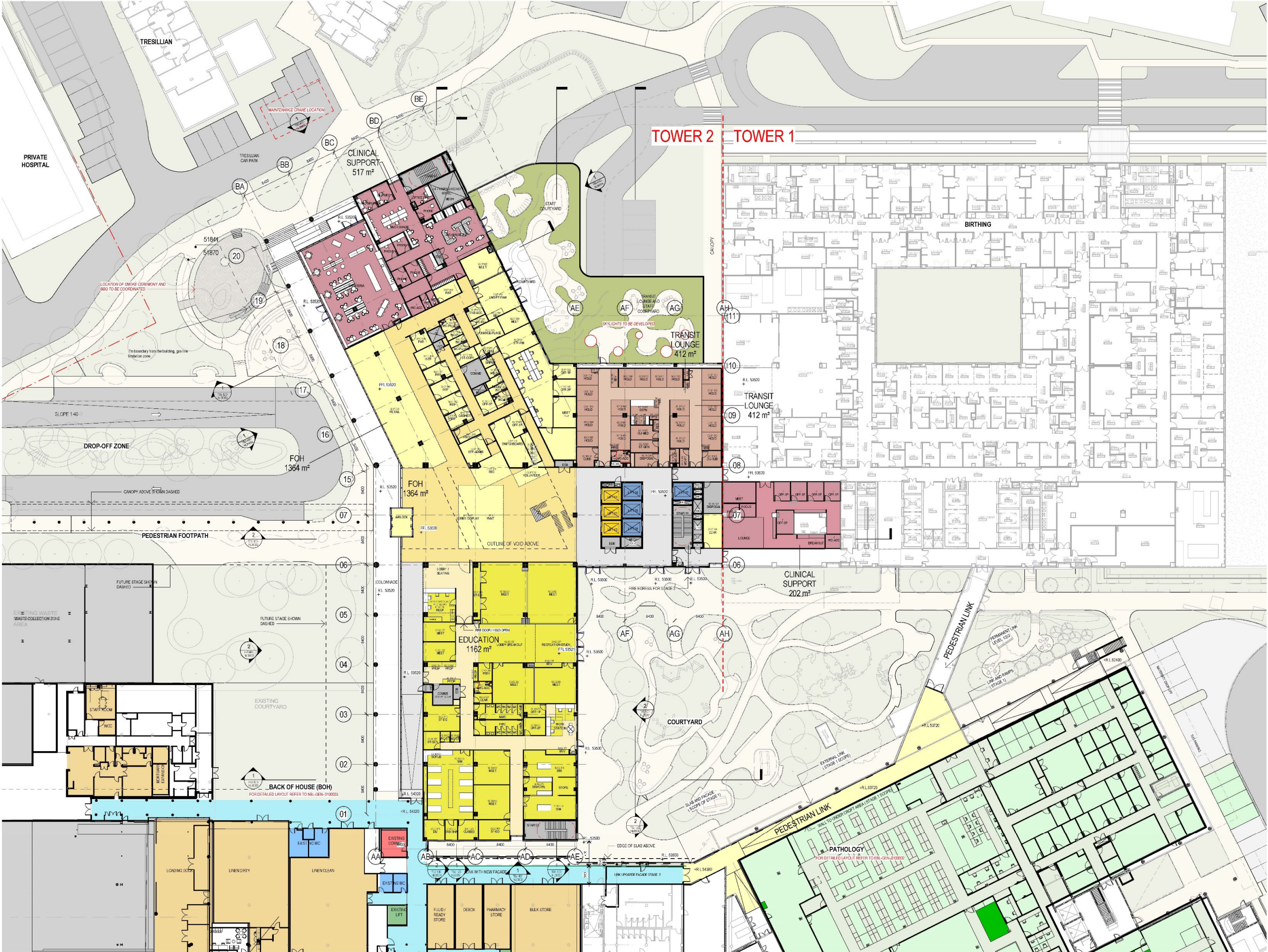
FoH: Front of House
ETS: Education and Training Centre
TL: Transit Lounge
ICU: Intensive Care Unit
COU: Close Observation Unit

IHU: Incentre Haemodialysis Unit
RACC: Renal Ambulatory Care Centre
CS: Clinical Support
S Nursery: Special Care Nursery



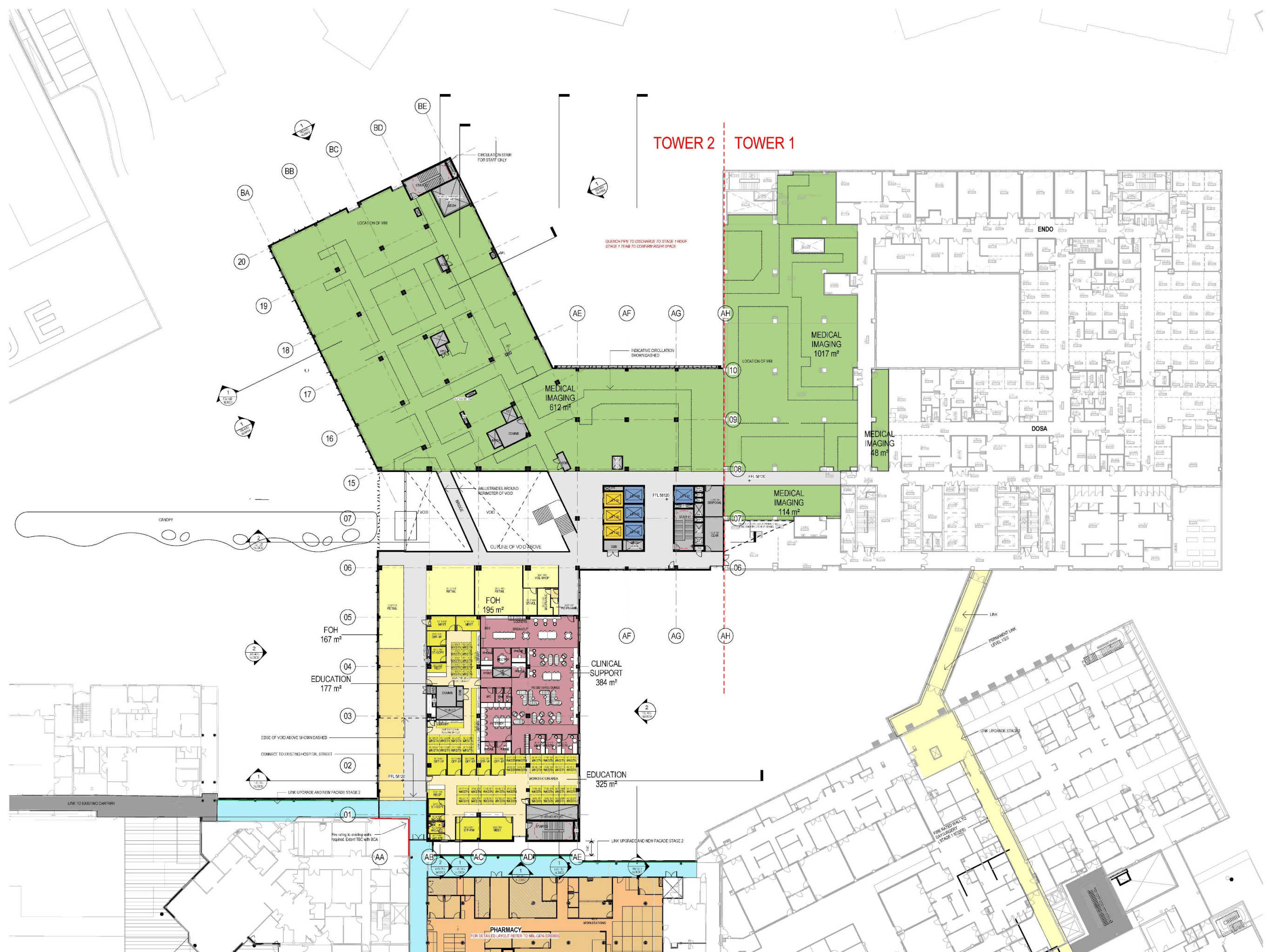
Section (Diagrammatic)

SCHEMATIC DESIGN STAGE 2



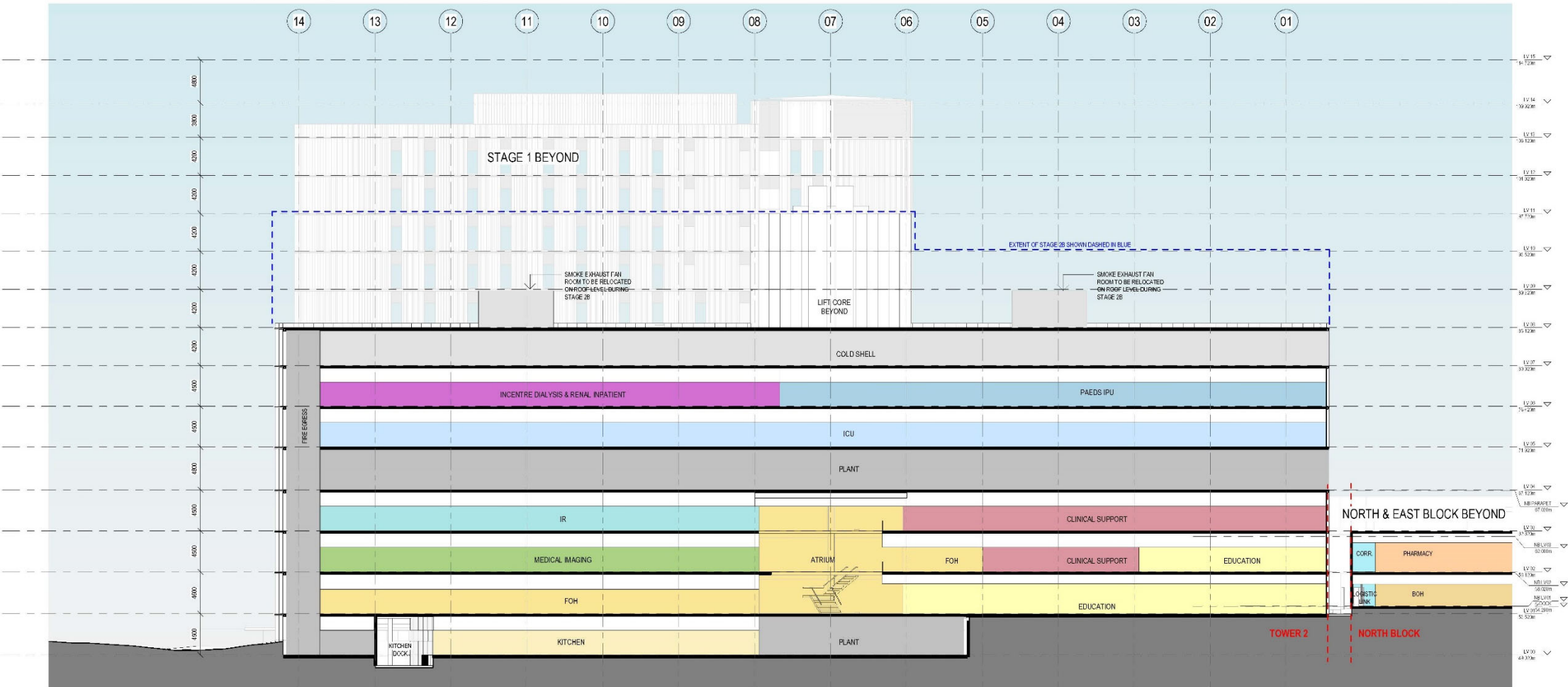
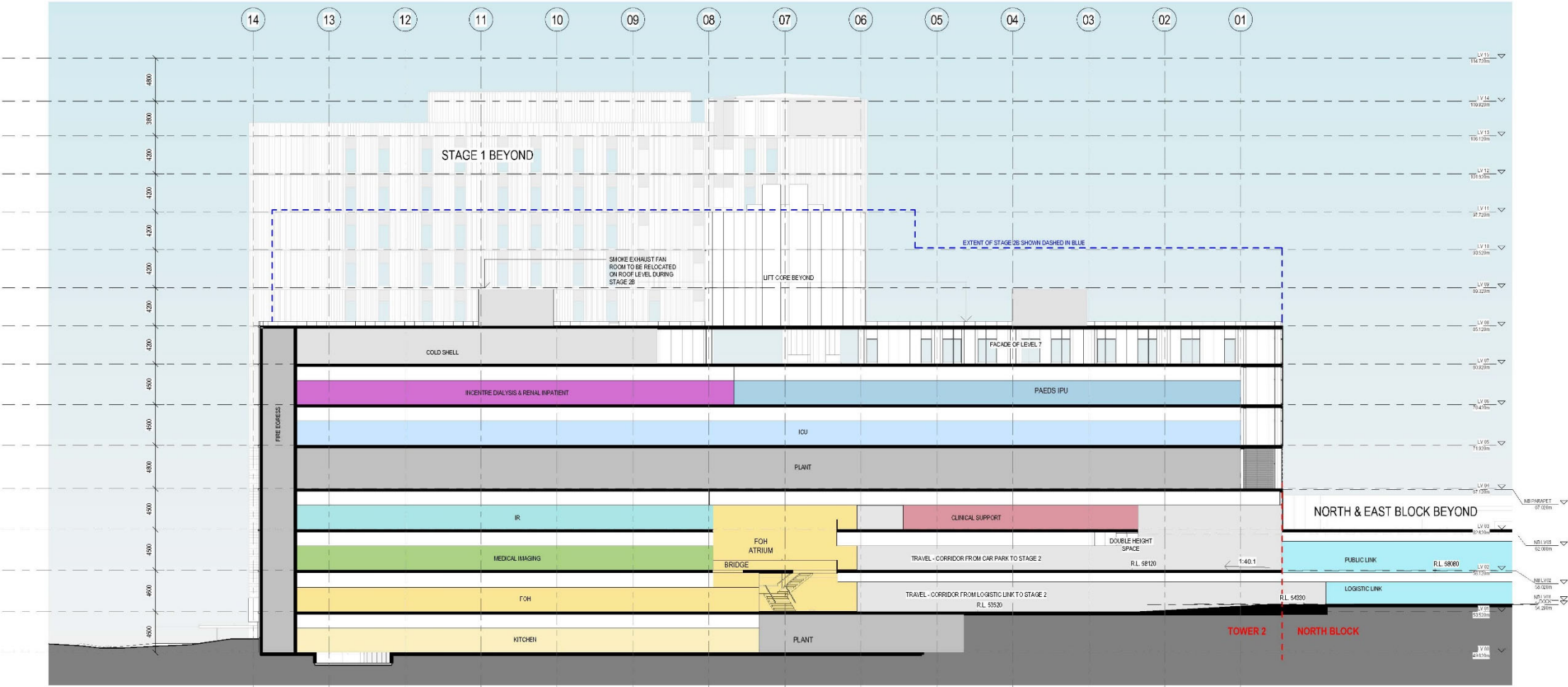
LEVEL 01

SCHEMATIC DESIGN STAGE 2



LEVEL 02

SCHEMATIC DESIGN STAGE 2 - SECTIONS



Vision - Stage 2 Principles



Retention of Existing Trees and Landform

Retention of as many existing trees across the site will not only help maintain existing habitat, shade and endemic character but it will also give scale of character in ecological maturity and hierarchy. Existing tree retention can give points of focus for way finding, spatial definition and appreciation for nature.



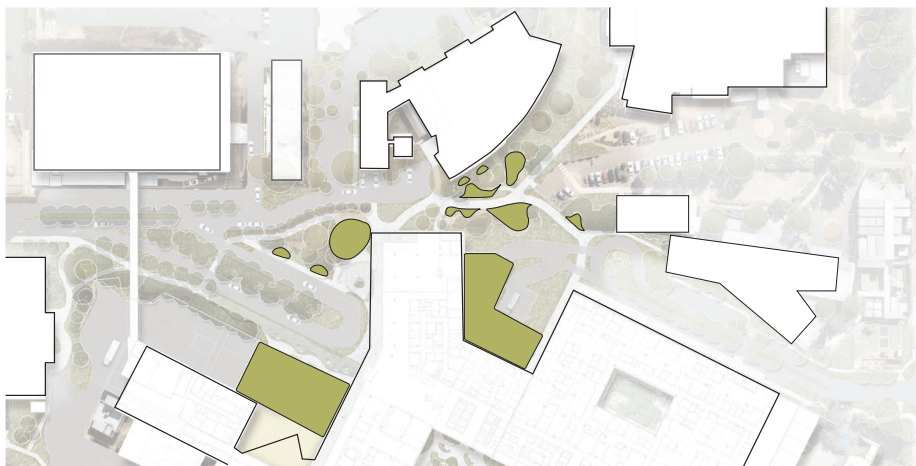
Expand on Green Links

The site has a wealth of native trees and shrubs which the proposed landscape seeks to enhance and build on. Through careful considerations of what will make up each order of planting (from the lower sensory and tangible plantings to taller canopies), knitting together existing green links through a contemporary and ecologically conscious lens will encourage understanding and appreciation for the local ecologies as well as provide those necessary vegetation corridors for endemic and native fauna.



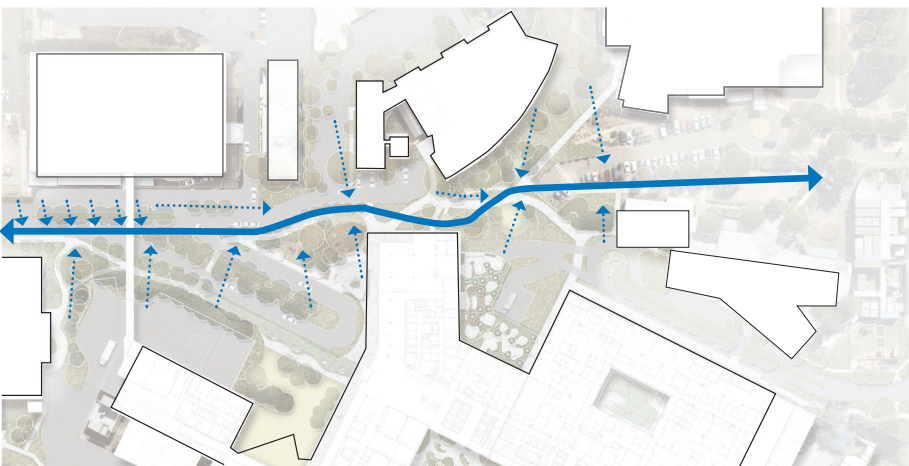
Create an Experiential Pedestrian Network

The aim to provide visitors, staff, and patients a sense of journey through the landscape, provide attractive natural comfort and inclusive amenity by utilising the existing and proposed micro-climates through incorporation of sensory driven design, and greening of edges and pathways.



Spaces that Connect People to Nature

Focusing on the role of nature in the healing process and maintaining good mental wellbeing. The landscape aims to provide a variety of inclusive spaces which one could enjoy a plethora of differing setting and outlooks. Accommodating for a variety of users and providing opportunities in reconnecting them with local nature and using qualities of scale (from larger forest clearings to more intimate garden rooms) to give richness in diverse spatiality.



Integrate WSUD

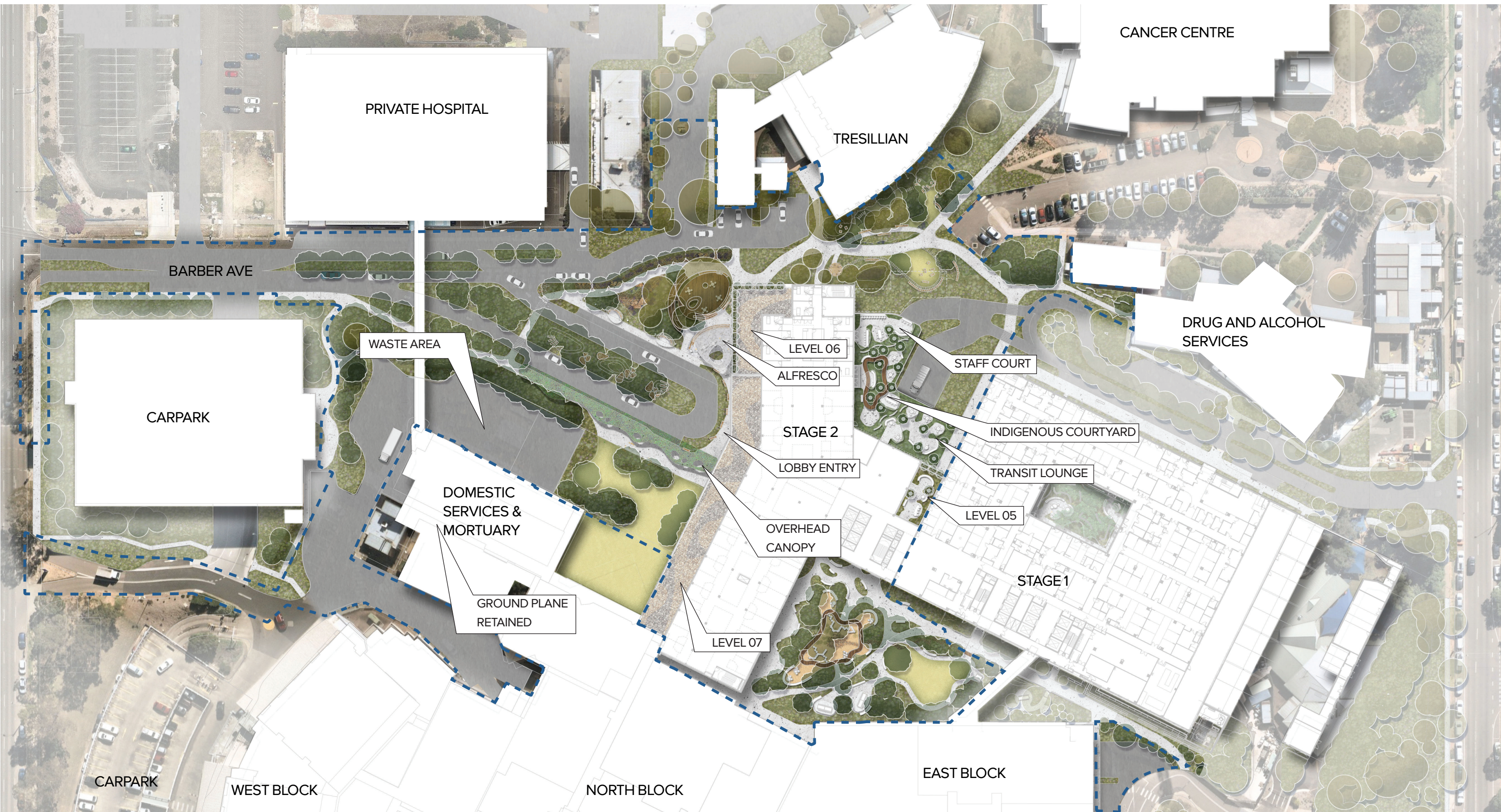
The landscape is threaded together by a naturalistic WSUD system (Swales and dry creek-beds) that create not only a visual trail and connection throughout and beyond the scope but to also accommodate and deal with the impacts of water (by taking into account existing and proposed larger impervious areas such as Barber Avenue) as well as providing links and pockets of more ecological diversity throughout.



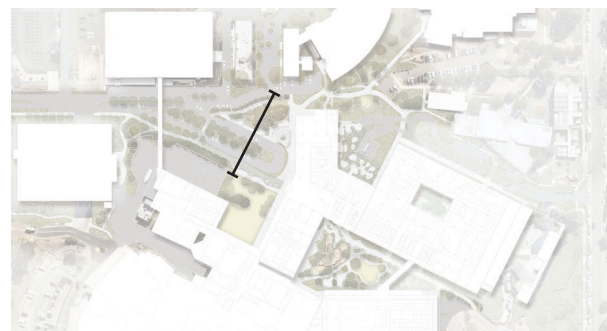
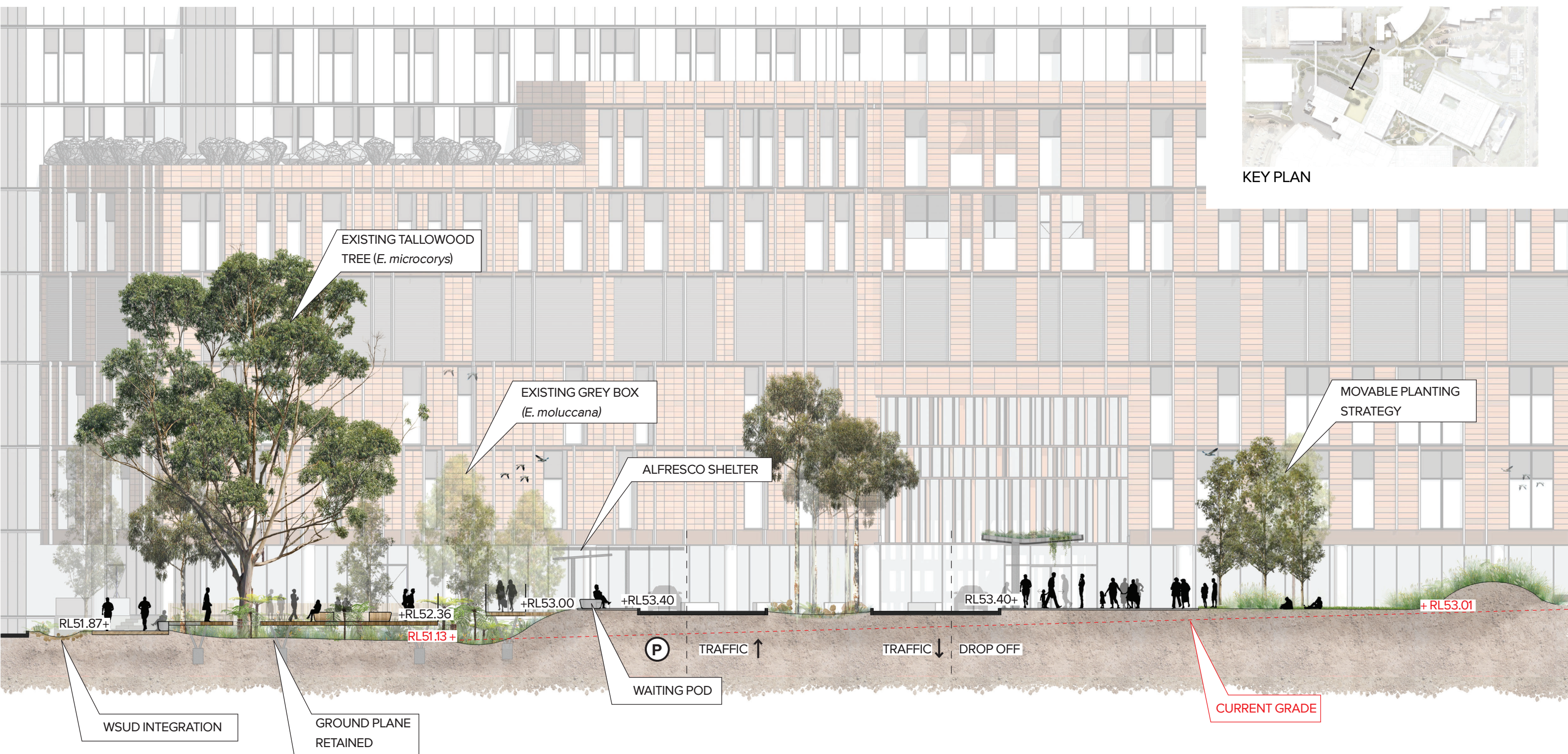
Landscape Visual Connection

Experience of the landscape should not be exclusive to the ground plane. Nature should be easily appreciated from the upper levels of the hospital, from the patients room to the staff lounge, down to the waiting and reception areas that welcome its visitors. Aspects towards nature can give soft separations to spaces, create beautiful leafy outlooks and add to the story of the landscape.

Masterplan - Stage 2



Detail Section - Drop off and Entry

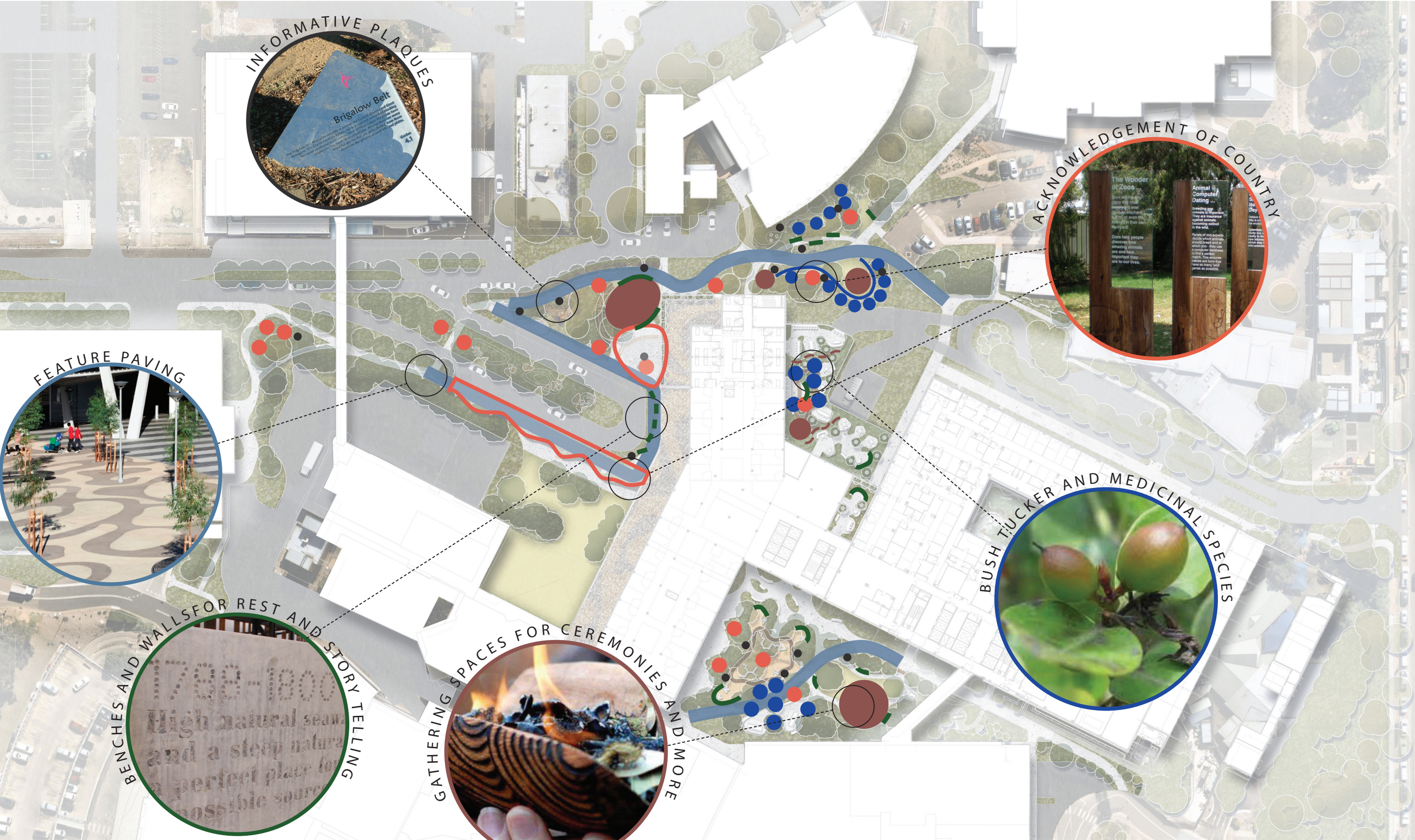


KEY PLAN

Master Plan - Planting Palette

CANOPY TREES	 <i>Corymbia maculata</i>	 <i>Eucalyptus fibrosa</i>	 <i>Eucalyptus moluccana</i>	 <i>Eucalyptus crabra</i>	 <i>Eucalyptus eugenioides</i>	 <i>Eucalyptus tereticornis</i>		
TREES	 <i>Acacia decurrens</i>	 <i>Acacia implexa</i>	 <i>Acacia parramattensis</i>	 <i>Exocarpus cupressiformis</i>	 <i>Melaleuca decora</i>			
SHRUBS	 <i>Breytia oblongifolia</i>	 <i>Bursaria spinosa</i>	 <i>Daviesia ulicifolia</i>	 <i>Dillwynia sieberi</i>	 <i>Dodonaea viscosa cuneata</i>	 <i>Indigofera australis</i>	 <i>Lissanthe strigosa</i>	 <i>Pimelia spicata</i>
GRASSES	 <i>Aristida ramosa</i>	 <i>Cymbopogon refractus</i>	 <i>Dichelachne micrantha</i>	 <i>Lomandra filiformis</i>	 <i>Lomandra multiflora</i>	 <i>Microlaena stipoides</i>	 <i>Themeda triandra</i>	
GROUNDCOVERS	 <i>Asperula conferta</i>	 <i>Desmodium varians</i>	 <i>Dianella caerulea</i>	 <i>Dichondra repens</i>	 <i>Goodenia hederacea</i>	 <i>Hardenbergia violacea</i>	 <i>Pandorea pandorana</i>	

Master Plan - Interpretive Opportunities



INDIGENOUS INTERPRETATION & WAYFINDING

GUIDING PRINCIPLES

When positioning and incorporating indigenous signage and narrative into wayfinding, it is important that each piece should aim to further the overarching wayfinding narrative principles developed for wayfinding integration throughout the site.

Acknowledgment of indigenous culture

The inclusion of indigenous signage expressions in the building and landscape represents a **mark of respect for the Traditional Custodians**, their Country and their history. It demonstrates that we are **embracing indigenous culture and its connection to country**.

Maintenance of indigenous culture

There is an opportunity to provide a **platform to preserve and propagate** the culture within a contemporary context. Furthermore, the creation process enables us to **engage and collaborate** with the local indigenous community – a sort of **'inclusion fusion'**.

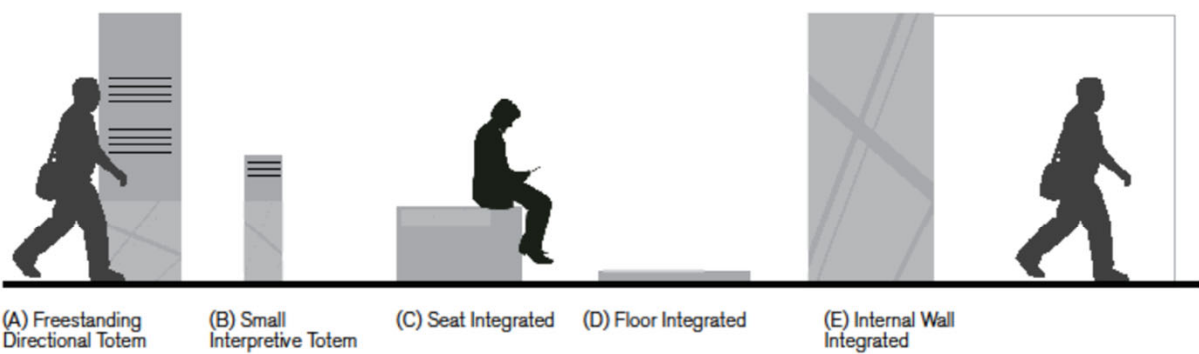
Promoting inter-generational learning

It is important that our country's **rich indigenous cultural heritage is preserved** and is not lost to future generations. Combining indigenous words and art on signage facilitates communication on two levels. Stories can be shared that **relate specifically to the location** that will resonate more strongly.

Contribution to well-being

It is widely acknowledged that the **incorporation of artwork in an environment enhances well-being** and contributes to an accelerated healing process.

TYPICAL WAYFINDING SIGNS TO INTEGRATE INDIGENOUS NARRATIVE



The 5 signtypes shown here are typically the best forms to integrate cultural narrative due to the key wayfinding positioning of the totem and internal wall (A,E) forms on key circulation paths, while having good integration opportunities into external seating, flooring and garden beds. (B,C,D)

INTEGRATION WITH LANDSCAPE & ARCHITECTURE

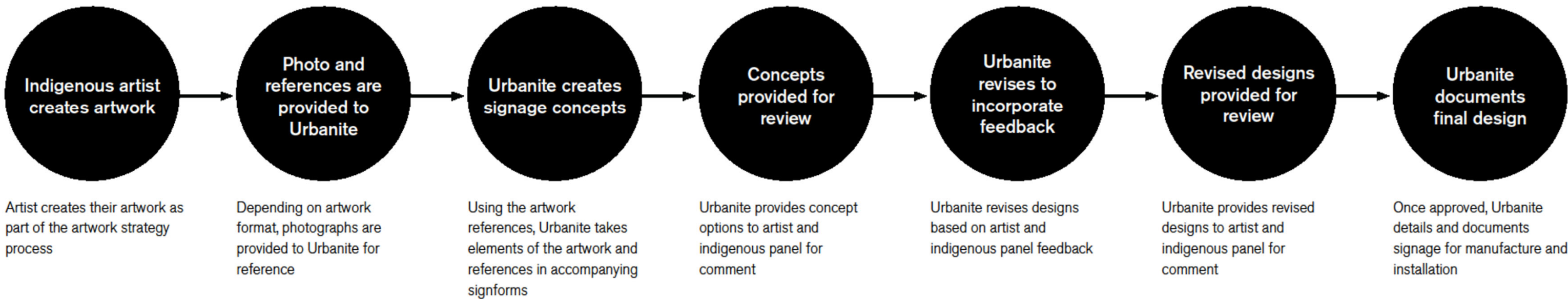
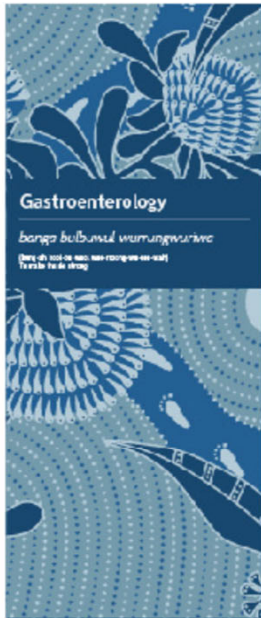
Opportunities exist to incorporate indigenous signage and content into the landscape elements. The content can be encased within ground paving, seating and other elements to achieve an integrated and responsive cultural narrative within the landscape.



STAGE 1 TOWER INDIGENOUS SIGNAGE CONSULTATION

THE PROCESS

Urbanite has developed a number of indigenous signage within the Stage 1 Tower to identify department locations. This process involved the collaboration with an indigenous artist and stakeholder group with the process outlined below.



Nepean Hospital Redevelopment Stage 2

ARTS + CULTURE STRATEGY

In preparing and delivering the Stage 2 Nepean Hospital Redevelopment Arts + Culture Strategy, our methodology and approach has included:

1. Collaboration with the BVN, Arcadia and Urbanite to ensure the arts and culture program, architecture, landscape and wayfinding work in harmony
2. Consultation with key stakeholders including Nepean Hospital Aboriginal Health Unit and multi-cultural representatives
3. Lessons learned through the delivery of previous hospital art programs including the Stage 1 Nepean Hospital Redevelopment
4. Providing value for money through streamlined procurement methods, developing artworks to be used across multiple sites and engaging the community to create collaborative artworks
5. Developing projects which will contribute to cultural, social and environmental sustainability. Including artist professional development, capacity building, mentorships and creative educational opportunities for hospital staff
6. Development of projects which meet the highest international standard for art and culture in a health setting



Proposed artwork site - ceiling and wall panels within the Aboriginal multipurpose room

Indigenous Walk + Multipurpose Room

FIRST NATIONS ENGAGEMENT

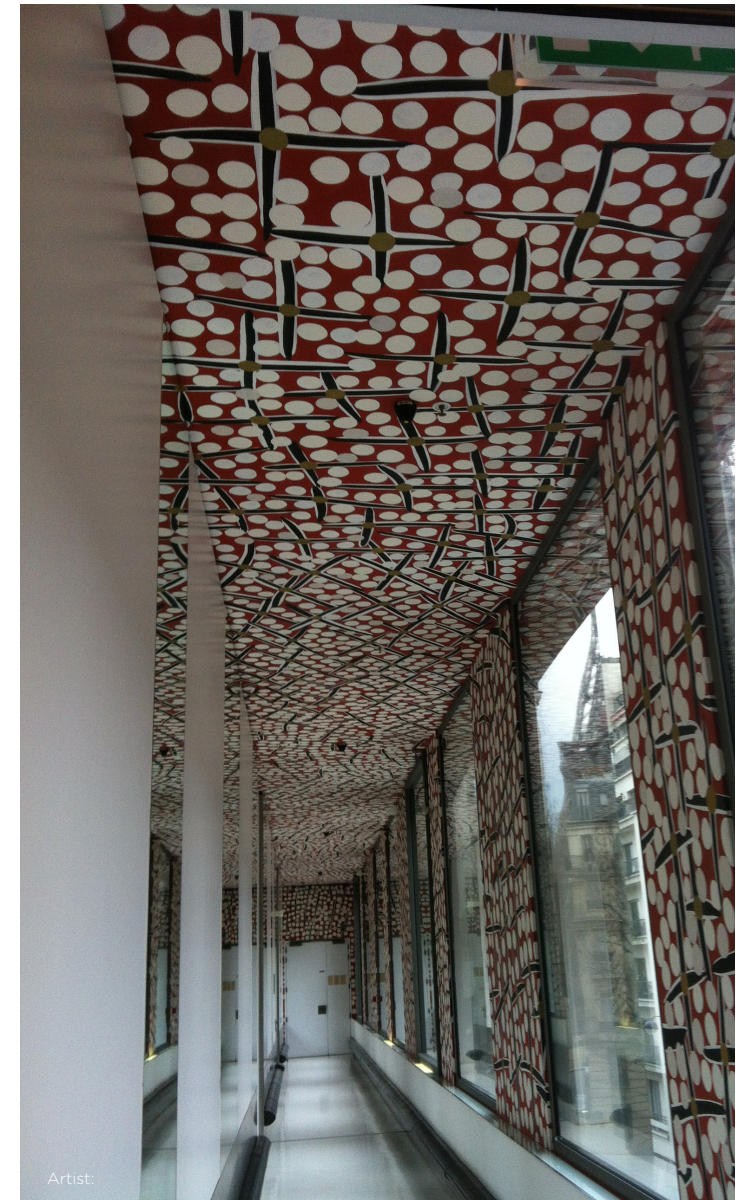
DESCRIPTION	CURATORIAL RATIONALE	SITE + SCALE	POTENTIAL ARTISTS
<p>Dharug artists will be invited to create artwork concepts which responds to the cultural heritage of the Dharug Nation on which Nepean Hospital is located.</p> <p>One artist will be selected for the commission and work collaboratively with an Indigenous design mentor, who will assist in translating the artwork into interior and exterior architectural design elements.</p>	<p>For Aboriginal people, country is something to be cared for as well as being a provider. Care of the land is the responsibility of all people and is enshrined in traditional social, cultural and spiritual practices.</p> <p>Artists will be encouraged to manifest these ideas in different forms, language or imagery, and evoke a strong site specific narrative. Drawing on themes of Indigenous Heritage and Healing and the Land the artwork will welcome visitors and create a visually striking entrance to the hospital, telling the stories of the Dharug people and their connection to Country.</p> <p>Durable materials are proposed and complementary colour palette to ensure the artwork is in harmony with the interiors and exterior building façade proposed by the architects.</p>	<p>These are integrated artworks with the artwork design being applied to:</p> <p>a) the exterior walkway soffit and</p> <p>b) the ceiling and wall panels within the Aboriginal multipurpose room.</p> <p>Integration of the artwork design will be determined collaboratively between the curator, artist and design team.</p>	<p>This project is proposed as a mentorship opportunity for an emerging to mid-career artist to collaborate with an experienced designer/fabricator.</p> <p>Dharug elders and Nepean Hospital's Aboriginal Health Unit will be consulted for guidance on suitable artists and procurement processes.</p>



Proposed artwork site - exterior walkway soffit

Project 3. Indigenous Walk + Multipurpose Room

DESCRIPTION	CURATORIAL RATIONALE	SITE + SCALE	POTENTIAL ARTISTS
<p>Dharug artists will be invited to create artwork concepts which responds to the cultural heritage of the Dharug Nation on which Nepean Hospital is located.</p> <p>One artist will be selected for the commission and work collaboratively with an Indigenous design mentor, who will assist in translating the artwork into interior and exterior architectural design elements.</p>	<p>For Aboriginal people, country is something to be cared for as well as being a provider. Care of the land is the responsibility of all people and is enshrined in traditional social, cultural and spiritual practices.</p> <p>Artists will be encouraged to manifest these ideas in different forms, language or imagery, and evoke a strong site specific narrative. Drawing on themes of Indigenous Heritage and Healing and the Land the artwork will welcome visitors and create a visually striking entrance to the hospital, telling the stories of the Dharug people and their connection to Country.</p> <p>Durable materials are proposed and complementary colour palette to ensure the artwork is in harmony with the interiors and exterior building façade proposed by the architects.</p>	<p>These are integrated artworks with the artwork design being applied to:</p> <ul style="list-style-type: none"> a) the exterior walkway soffit and b) the ceiling panels within the Aboriginal multipurpose room. <p>Integration of the artwork design will be determined collaboratively between the curator, artist and design team.</p>	<p>This project is proposed as a mentorship opportunity for an emerging to mid-career artist to collaborate with an experienced designer/fabricator.</p> <p>Dharug elders and Nepean Hospital's Aboriginal Health Unit will be consulted for guidance on suitable artists and procurement processes.</p>



Exemplar Projects. Indigenous Walk + Multipurpose Room





ESD Strategy

ESD Target

A key ESD objective of the project is to achieve a design standard equivalent to a 5 Star Green Star rating. Credits that are considered generally easy to achieve have been maximised with emphasis placed on the energy performance and indoor environmental quality of the building.

ESD Initiatives

Climate Change Adaptation Plan

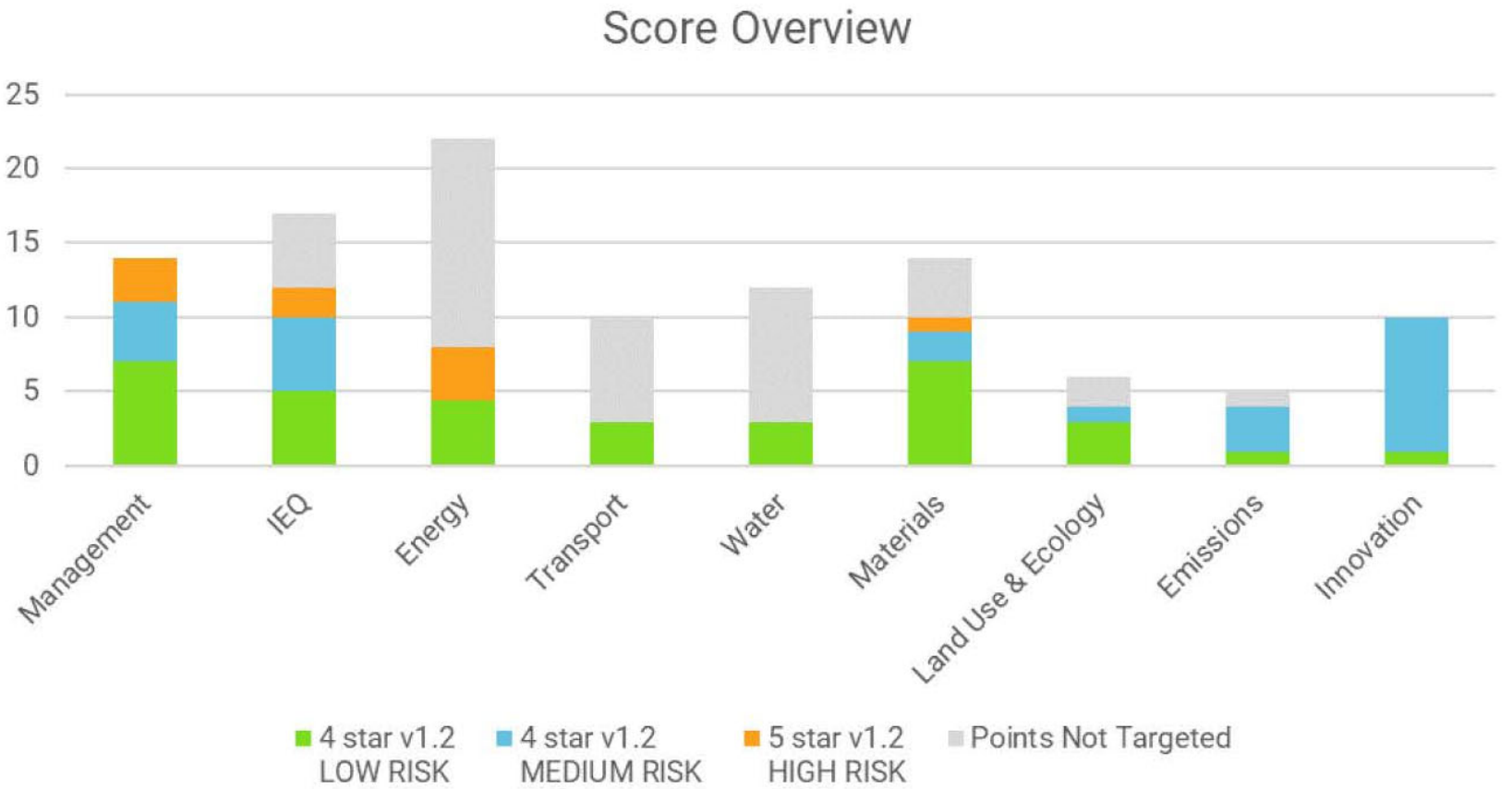
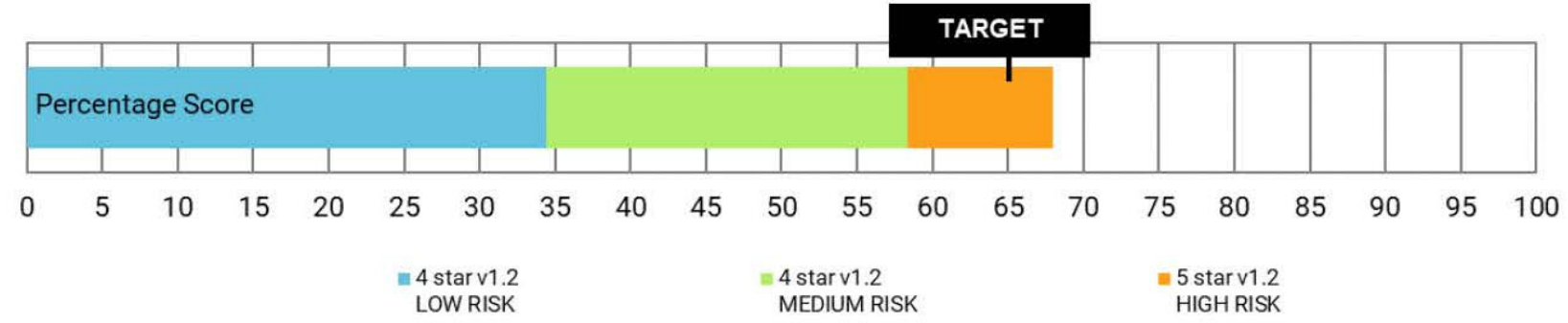
A climate change adaptation workshop was held to identify potential risks from a changing climate due to increasing temperatures, severity of floods, droughts and storms. The findings from that workshop and the mitigation measures agreed to enhance the climate resilience of the building was put together in a Climate Change Adaptation Plan.

Life Cycle Assessment

Engagement of a specialist LCA consultant is highly recommended to investigate the carbon emissions associated with the construction of the building, including the embodied carbon of the materials used. This offers more flexibility with the potential to earn additional points in the materials category in the HI ESD Framework and can reduce waste by optimising structural design, low-carbon materials, etc.

Next Steps

Confirmation of credits requiring HI/LHD input to secure the points required to achieve a 5 Star standard.
Energy modelling to ensure targeted energy credits are achieved.
On-going coordination with project team to ensure that credit requirements are still achieved, especially as the project progresses to DD.





- 1 Window areas on west elevations are low with high performance glazing mitigate afternoon solar heat gain
- 2 Shading devices proposed to control solar ingress
- 3 Mixed-mode ventilation potential through main foyer, clinical support, FOH and education spaces
- 4 Low embodied energy design and construction informed by an EN15978 Life Cycle Assessment
Recommendation to procure renewable energy to offset energy consumption



- 5 Landscaping and high SRI material reduces urban heat island effect
- 6 Water use reduced through drip irrigation, water-efficient fittings and fire system test water reclamation
- 7 Good indoor air quality through selection of low VOC materials, finishes, furniture and mattresses
- 8 End of Trip facilities to promote active transportation and reduce car use
- 9 Overall 5 Star Green Star equivalent design

SHADOW DIAGRAM – 21ST DECEMBER



09.00 AM



12.00 PM



03.00 PM

SHADOW DIAGRAM – 21ST JUNE



09.00 AM



12.00 PM



03.00 PM