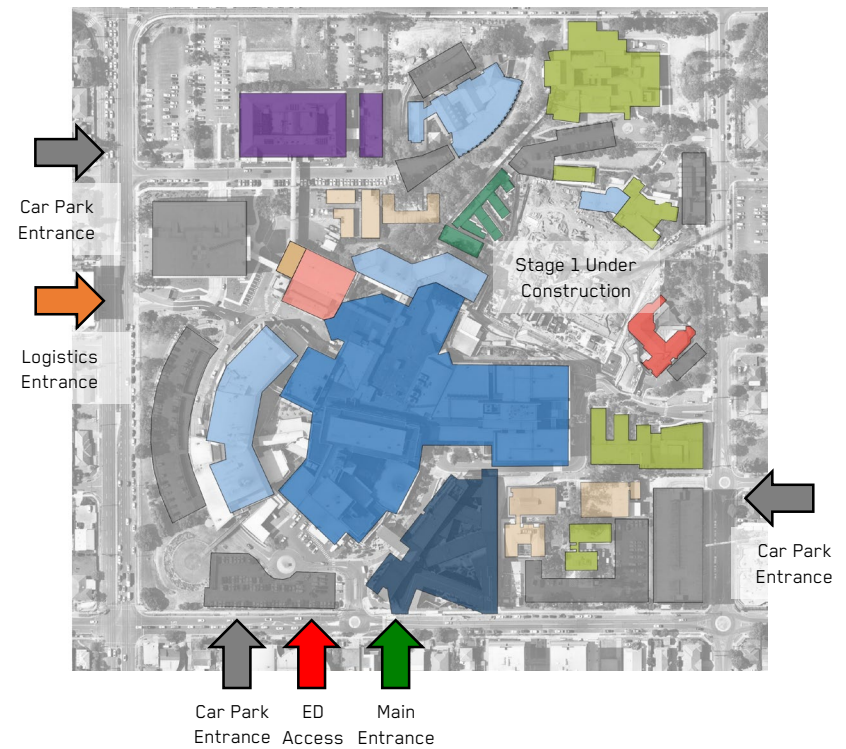
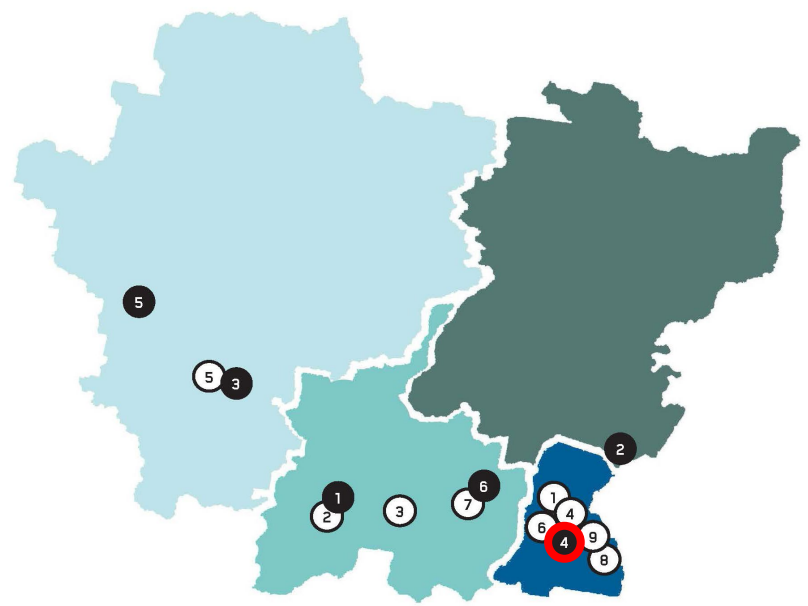


# CONTEXT PLAN & PROJECT BACKGROUND INFORMATION

# SITE PLAN AND ANALYSIS



Nepean Stage 2 Project is the second phase of Nepean Hospital Redevelopment, following Stage 1 which was approved in 2017.

Nepean hospital is part of Nepean Blue Mountain Local Health District. It is the principal referral hospital and is responsible for providing primary, secondary and tertiary level health care.

Nepean hospital provides district health care for a region which covers almost 9,180 square kilometres stretching from Penrith, Blue Mountains, Hawkesbury to the Lithgow Local Government Areas

- 1 Blue Mountains District ANZAC Memorial Hospital
- 2 Hawkesbury District Health Service
- 3 Lithgow Hospital
- 4 Nepean Hospital
- 5 Portland Tabulam Health Centre
- 6 Springwood Hospital

**Acute Services:** arranged horizontally, resulting in long travel distances and clashes between public and patient travel paths.

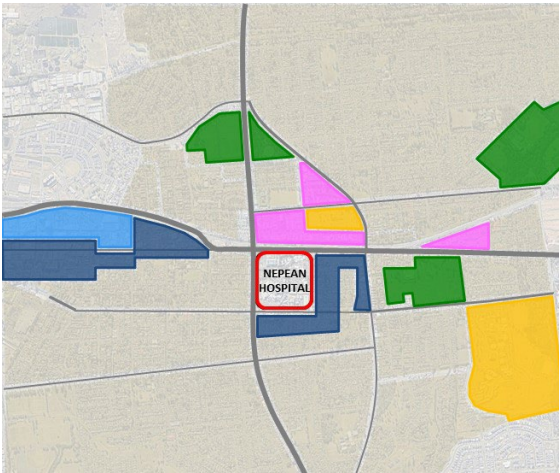
**Inpatient Units and Ambulatory Care Services:** spread throughout campus

**Support Services (Clinical and Non-clinical):** require expansion and upgrade

**Education:** require expansion

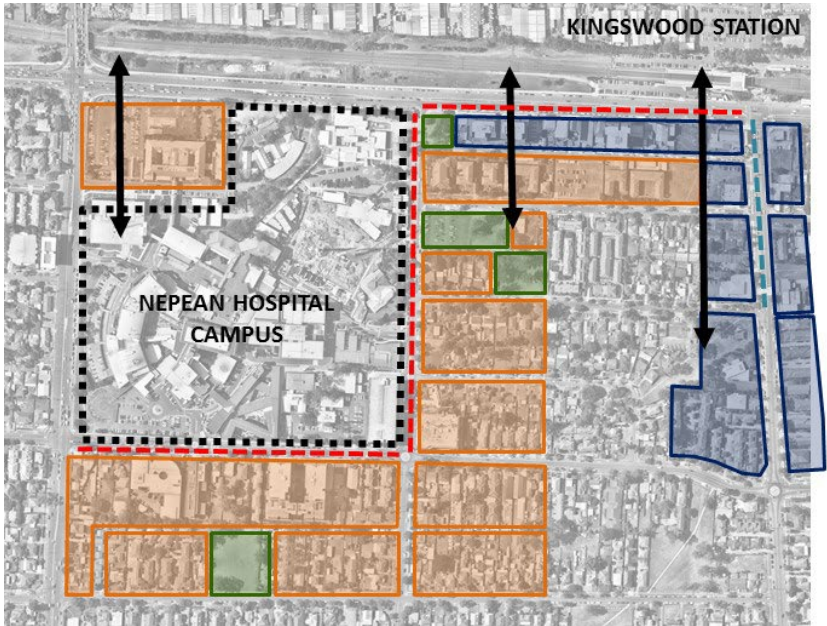
- Accommodation
- Acute
- Ambulatory Care
- Inpatient Unit
- Clinical Support
- Non-clinical Support
- Private Hospital
- Mental Health
- Administrative / Office
- Child Care
- Car Park

CONTEXT



Zoning

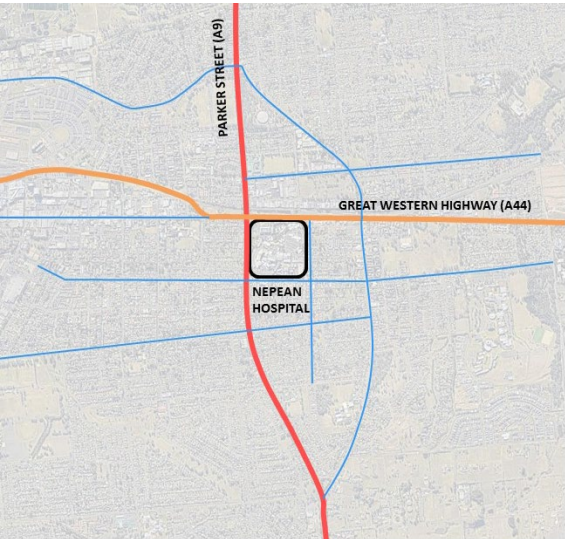
- Special Activities
- Mixed Use
- Commercial Core
- Green Spaces
- General / Light Industrial
- Residential



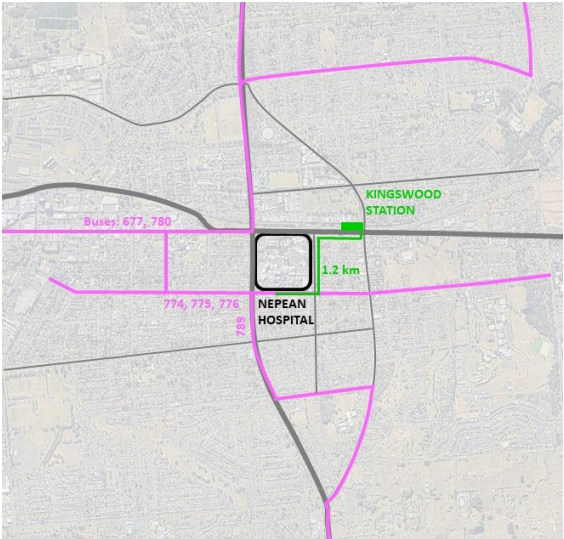
PRECINCT PLANNING CONTROLS

- Commercial / Mixed Uses
- Medical Mixed Used
- Public Recreation
- Desired Future Links
- Active Street Frontage
- Outdoor Dining Edge

E12 Part A Hospital Precinct  
12.1 Background  
12.1.1 Area included within the Hospital Precinct  
This section is to be developed on land owned by the Hospital Precinct as shown in Figure E12. The section provides specific controls for the Hospital Precinct as shown in Figure E12. The section provides specific controls for the Hospital Precinct as shown in Figure E12. The section provides specific controls for the Hospital Precinct as shown in Figure E12.



Road Network



Public Transportation Network



Strategic Vision 2011



Penrith Health and Education Precinct  
The Quarter - <https://www.thequarter.org.au/>



SITE PHOTOS



Overall Campus Photo



3. Barber Avenue Multistorey Carpark



4. Future Private Hospital Development



1. South Block / Current ED Entry



2. East Block



5 . Future Private Hospital Development

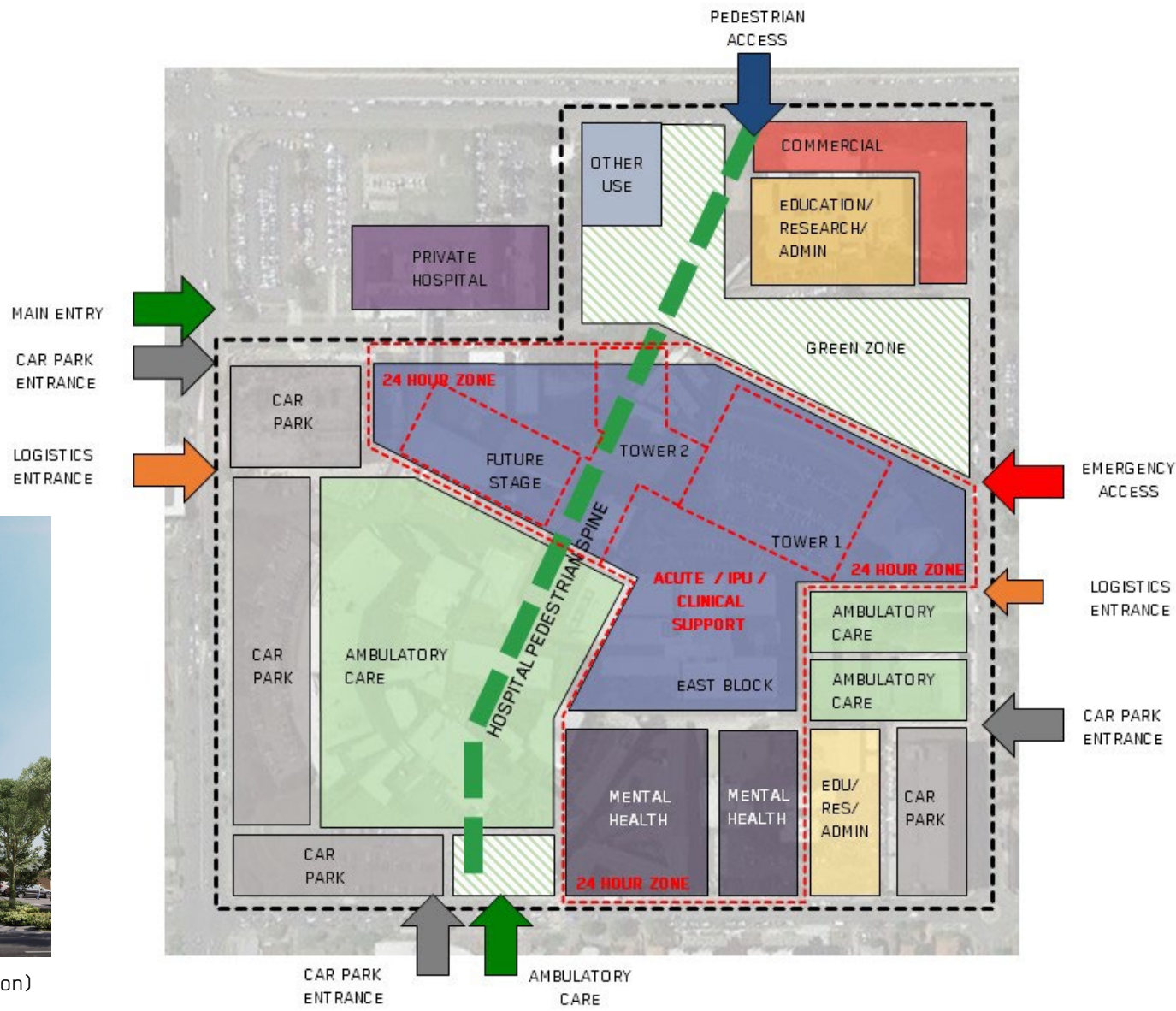


# ZONAL MASTERPLAN

- **Acute Services:** move into central zone, create vertical connection and increase efficiency
- **Inpatient Units and Ambulatory Care Services:** consolidate into zones
- **Support Services (Clinical and Non-clinical ):** upgrade to suit campus requirements
- **Education:** create a dedicated education and research zone and respond to the vision of Penrith Health and Education Precinct



6. Future Tower 1 (Under Construction)



PUBLIC DOMAIN



Trees  
Retention



Expand Link



Pedestrian  
Network



Connect to  
Nature



Integrate WSUD



Landscape Visual  
Connection



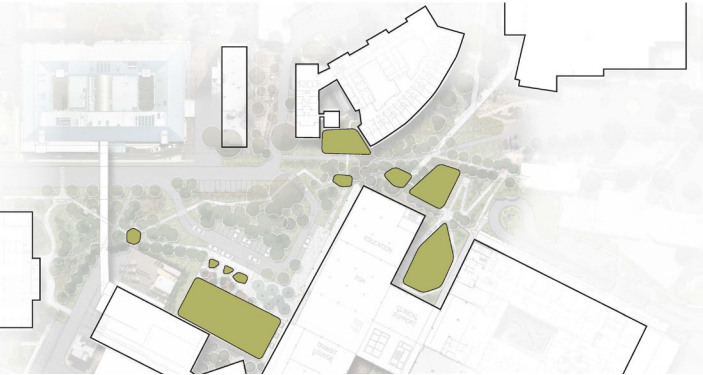
Safe Vehicle Flow



Expand On Green Link



Create an Experiential Pedestrian Network



Spaces that Connect People to Nature

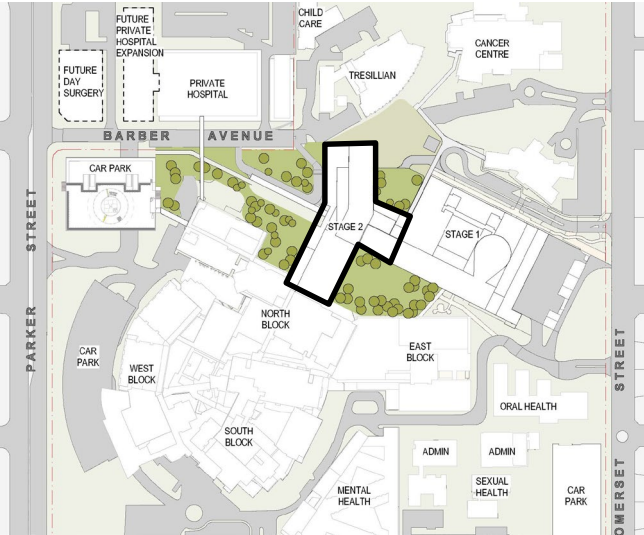


Landscape Visual Connection

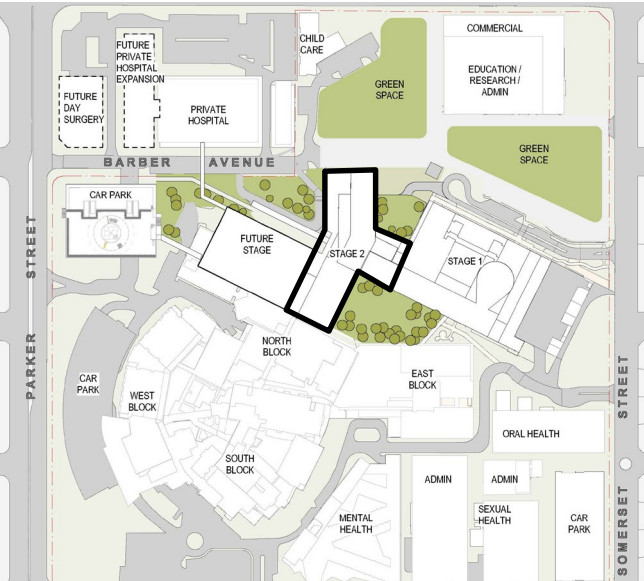




SITE PLAN



Site Plan - End of Stage 2



Site Plan - End of Masterplan



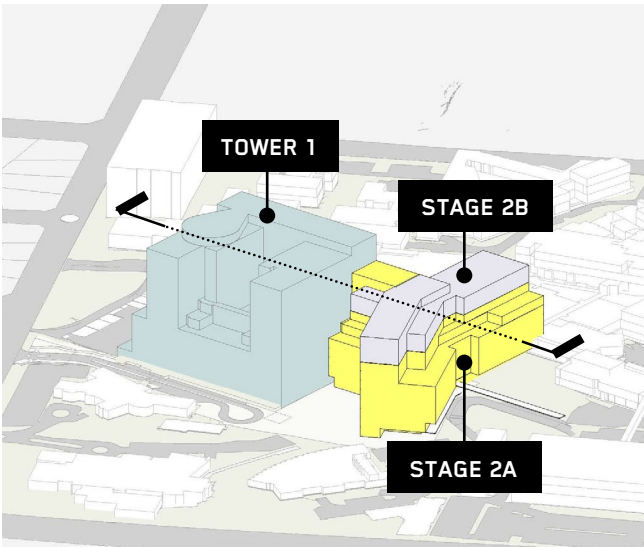
Site Plan with Preliminary Landscape Proposal by End of Stage 2

# 3D VIEWS, BLOCK & STACK AND SECTION

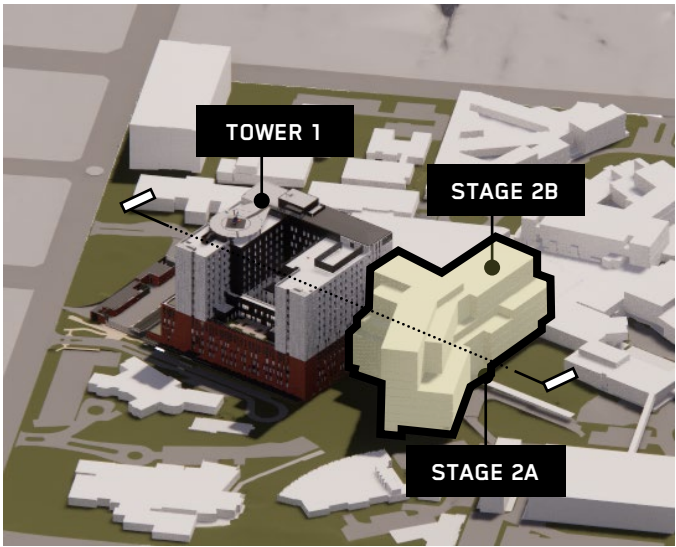
The Stage 2 project scope mainly consists of

- construction of Tower 2
- Shell space fit-out in Tower 1
- Refurbishment and repurposing of existing campus.

To optimise the budget, Tower 2 will be constructed in 2 sub stages, Stage 2A and Stage 2B.



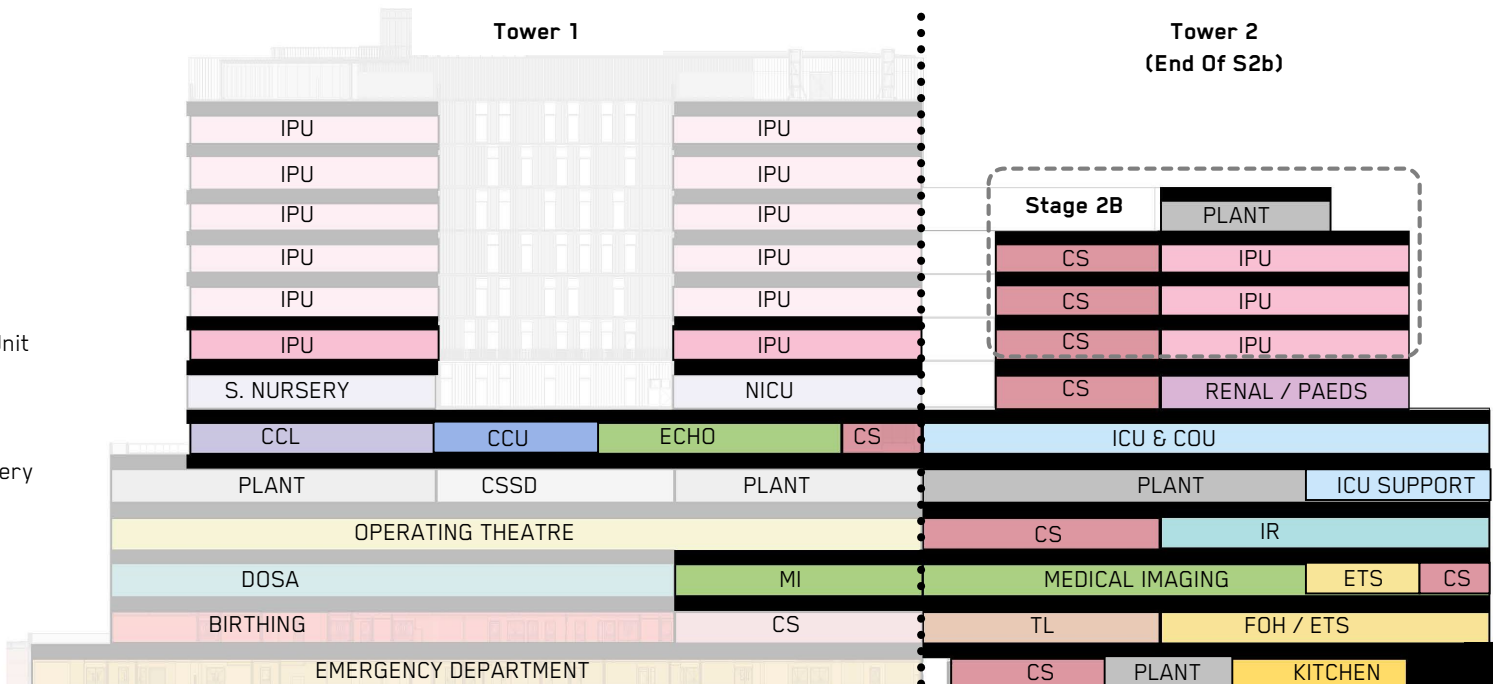
Diagrammatic Aerial View



Aerial View with Stage 1 in Render

## Acronyms:

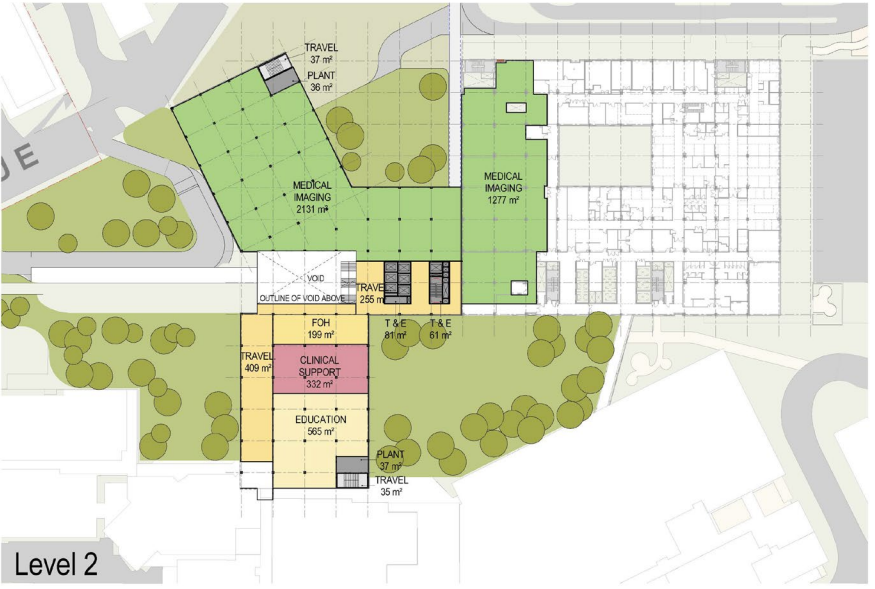
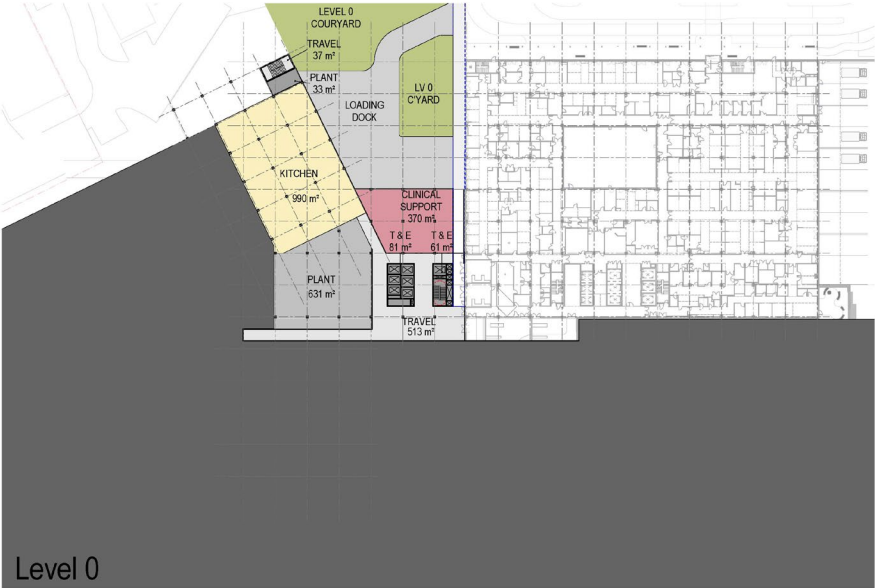
- FoH: Front of House  
ETS: Education and Training Centre  
TL: Transit Lounge  
ICU: Intensive Care Unit  
COU: Close Observation Unit  
IHU: Incentre Haemodialysis Unit  
RACC: Renal Ambulatory Care Centre  
CS: Clinical Support  
S Nursery: Special Care Nursery



Section (Diagrammatic)

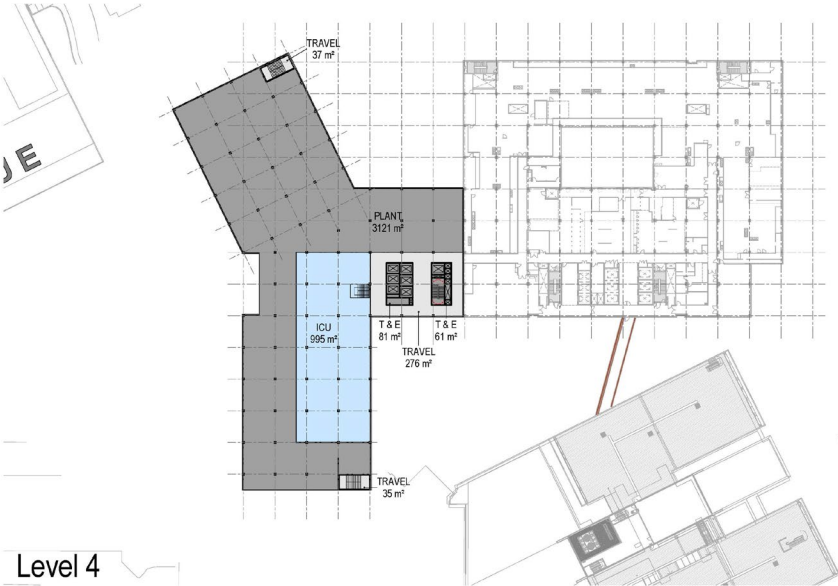


SKETCH PLANS - NEW TOWER





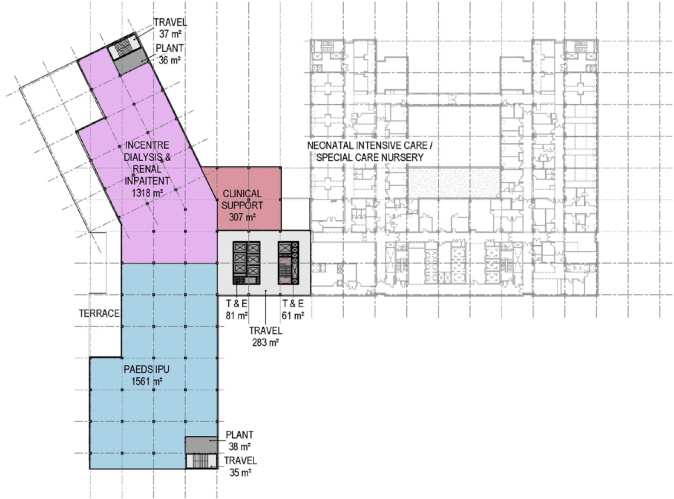
SKETCH PLANS - NEW TOWER



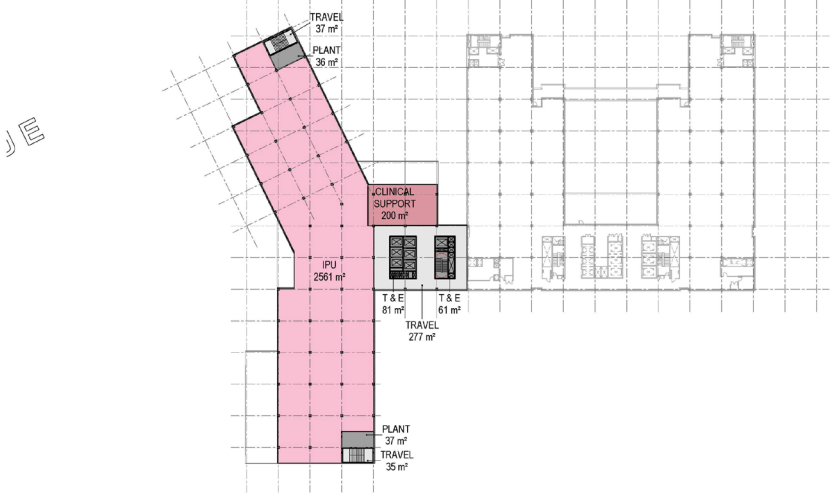
Level 4



Level 5



Level 6



Level 7-9 Stage 2B

# SKETCH PLANS - EXISTING CAMPUS

**Legend**

Current Department

Refurbished Area

Ambulatory Care / Outpatient

Office / Admin

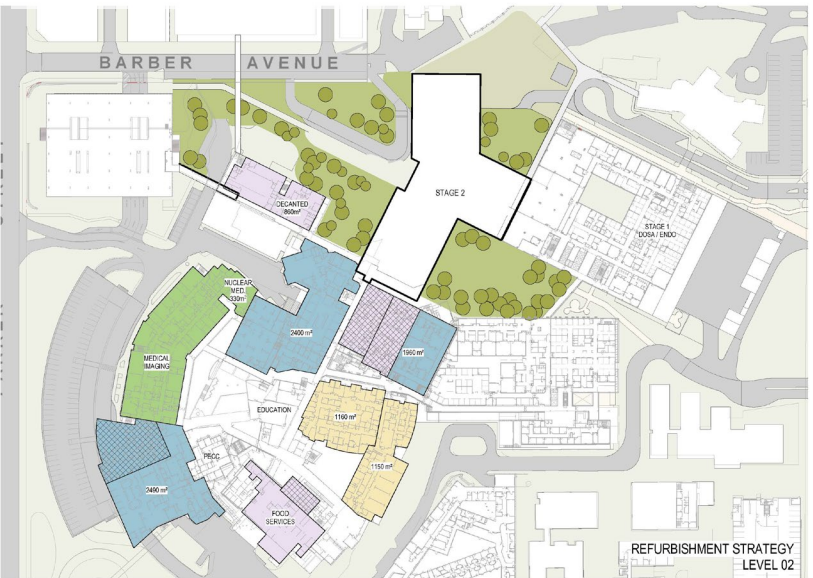
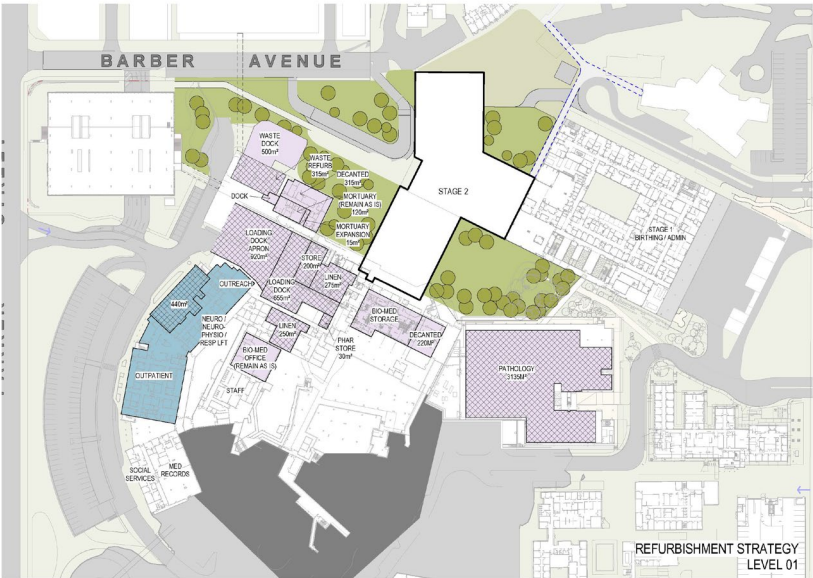
Sub-Acute

Clinical & Non-Clinical Support

Medical Imaging

Overnight Accommodation

\* Indicative location only - to be designed to efficiently respond to Certification and Design requirements

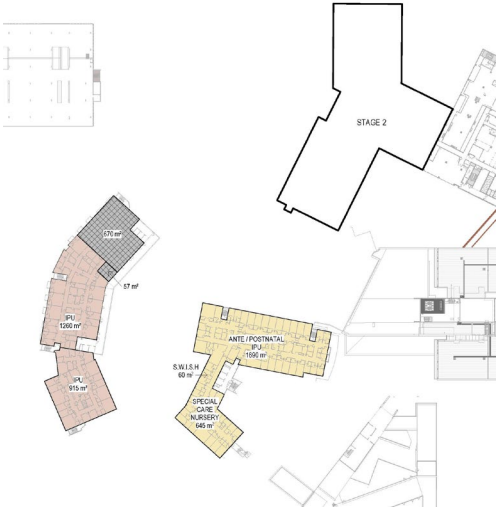


Refurbishment Plan Level 01

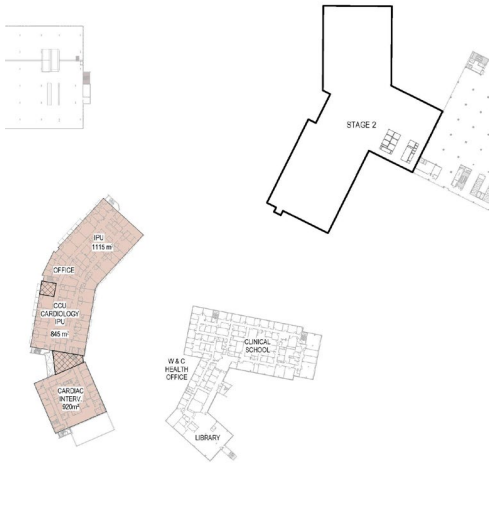
Refurbishment Plan Level 02



Refurbishment Plan Level 03



Refurbishment Plan Level 04












Refurbishment Plan Level 05



# ESD TARGETS – GREEN STAR STAGE 2

- Target 52 points for 4 Star Design & Asbuilt equivalency rating (minimum 45 points)

 Management	 Indoor Env Quality	 Energy	 Transport	 Water
<ul style="list-style-type: none"><li>Commissioning &amp; Tuning</li><li>Climate Adaptation</li><li>Building Information</li><li>Commit to performance</li><li>Metering &amp; Monitoring</li><li>Construction Enviro Mgmt.</li><li>Operational Waste</li></ul>	<ul style="list-style-type: none"><li>Indoor Air Quality</li><li>Acoustic Comfort</li><li>Lighting comfort</li><li>Visual Comfort</li><li>Indoor Pollutants</li><li>Thermal Comfort</li></ul>	<ul style="list-style-type: none"><li>Greenhouse Gas Emissions</li><li>Peak Electricity Demand Reduction</li></ul>	<ul style="list-style-type: none"><li>Access by Public Transport</li><li>Walkable Neighbourhoods</li></ul>	<ul style="list-style-type: none"><li>Sanitary Fixture Efficiency</li><li>Landscape Irrigation</li></ul>
 Materials	 Land use and ecology	 Emissions	 Innovation	<p><b>Climate Adaptation Plan</b></p> <ul style="list-style-type: none"><li>On-going alignment with LHD's sustainability plan and initiatives</li><li>Upgraded generator and HVAC capacity for extreme weather</li><li>Improved AHU/BMS control to manage bushfire smoke</li><li>Flexibility for water tank top-up in emergency</li></ul>
<ul style="list-style-type: none"><li>Life Cycle Impacts</li><li>Responsible Bldg Materials</li><li>Sustainable Products</li><li>Construction Waste</li></ul>	<ul style="list-style-type: none"><li>Ecological Value</li><li>Sustainable Site</li><li>Heat Island Effects</li></ul>	<ul style="list-style-type: none"><li>Stormwater</li><li>Light Pollution</li><li>Microbial Control</li></ul>	<ul style="list-style-type: none"><li>Financial Transparency</li><li>Reconciliation Action</li><li>Contractor Education</li></ul>	

## APPROACH TO INDIGENOUS CULTURE AND HERITAGE

Public Art Health Infrastructure, have instigated an Art in Health program, a program designed to guide the integration of arts into the NSW healthcare system by supporting collaboration between local health services and the arts sector.

Art in Health aims to improve patient, staff and carer experience in health services through artistic engagement. Exposure to The Arts has a profoundly beneficial impact on patient wellbeing through its use in health promotion and messaging. In addition, contribution to Health Art can be used in key areas to promote Wayfinding throughout the Hospital.

Building on from stage 1, as part of the Health program it is envisaged that the art is developed with the local indigenous community to celebrate the local cultural heritage . Both internally and externally

