



Built Pty Ltd  
**State Significant Development  
Murwillumbah Education Campus Development**

**Hazardous Building Materials Survey**

Buildings A, E, F & AY  
Murwillumbah High School  
86 Riverview Street  
Murwillumbah, NSW

16 March 2022  
60882/144,319 (Rev 0)  
**JBS&G Australia Pty Ltd**

Built Pty Ltd

**State Significant Development  
Murwillumbah Education Campus Development**

**Hazardous Building Materials Survey**

Buildings A, E, F & AY  
Murwillumbah High School  
86 Riverview Street  
Murwillumbah, NSW

16 March 2022  
60882/144,319 (Rev 0)  
**JBS&G Australia Pty Ltd**

## Table of Contents

Abbreviations.....	v
1. Introduction.....	1
1.1 Background.....	1
1.2 Objectives.....	2
1.3 Relevant Legislation / Guidelines.....	2
1.4 Hazardous Materials Survey Limitations.....	2
2. Methodology.....	4
2.1 Hazardous Materials.....	4
2.1.1 Asbestos Containing Materials and Asbestos Containing Dust.....	4
2.1.2 Lead Based Paint.....	4
2.1.3 Lead Containing Dust.....	4
2.1.4 Polychlorinated Biphenyls.....	4
2.1.5 Synthetic Mineral Fibres.....	5
2.2 Inaccessible Areas.....	5
3. Site Description.....	6
3.1 Building A.....	6
3.1.1 Exterior.....	6
3.1.2 Interior.....	6
3.2 Building E.....	9
3.2.1 Exterior.....	9
3.2.2 Interior.....	9
4. Results.....	12
4.1 Hazardous Materials.....	12
4.2 Inaccessible Areas.....	12
5. Conclusions and Recommendations.....	13
5.1 Hazardous Building Materials.....	13
5.1.1 Asbestos Containing Materials.....	13
5.1.2 Lead Containing Dust.....	13
5.1.3 Lead Based Paints.....	14
5.1.4 Polychlorinated Biphenyls.....	14
5.1.5 Synthetic Mineral Fibres.....	14
5.2 Inaccessible Areas.....	14
5.3 Unexpected Finds.....	14
6. Limitations.....	15

## List of Figures

- Figure 1 Site Location  
Figure 2 Site Layout

## Appendices

- Appendix A Hazardous Materials Register  
Appendix B Building Layouts  
Appendix C Photographs  
Appendix D Laboratory Analysis Reports and Chain of Custody Documentation

***This is an incomplete version of this report. At the client's request, the following Appendices have been removed:***

- ***Appendix B – Building Layouts; and***
- ***Appendix D – Laboratory Reports and Chain of Custody Documentation.***

## Abbreviations

Term	Definition
AC	Asbestos Cement
ACM	Asbestos Containing Material
ACD	Asbestos Containing Dust
ANZECC	Australian and New Zealand Environment Conservation Council
AMP	Asbestos Management Plan
COC	Chain of Custody
EPA NSW	Environmental Protection Authority, New South Wales
FA	Friable Asbestos
HIL	Health Investigation Levels
HSL	Health Screening Levels
JBS&G	JBS&G Australia Pty Ltd
LAA	Licensed Asbestos Assessor
LCD	Lead Containing Dust
LOR	Limit of Reporting
LP	Lead Paint
NATA	National Association of Testing Authorities, Australia
NEPC	National Environmental Protection Council
NEPM	National Environmental Protection Measure
PCB	Polychlorinated Biphenyls
PPE	Personal Protective Equipment
SMF	Synthetic Mineral Fibre
SWA	Safe Work Australia
SWNSW	SafeWork New South Wales
WHS (WH&S)	Workplace Health and Safety

## 1. Introduction

### 1.1 Background

JBS&G Australia Pty Ltd (JBS&G) was engaged by Built Pty Ltd (Built, the client) to undertake an intrusive hazardous building materials survey (HBMS) of selected structures located within the Murwillumbah High School precinct located at 86 Riverview Street, Murwillumbah, NSW (the site).

The Murwillumbah High School precinct forms part of the proposed State Significant Development (SSD) Murwillumbah Education Campus (MEC) development project. The MEC development involves the co-location of Murwillumbah Primary School, Murwillumbah East Primary School, Murwillumbah High School, and Wollumbin High School, to establish a new primary school and a new high school as part of the same education campus.

The Murwillumbah High School precinct is set over a land area of approximately 11.5 hectares and is legally defined as Lot 2 in DP 578679, and Lots 5 and 6 in DP 820602.

The site location is shown in **Figure 1**.

This report is specific to those structures at the site that are included as part of the SSD application, specifically:

- Building A – a three-level structure comprising mixed classrooms and offices, a music stage, hall and a basement level proposed for refurbishment;
- Building E – a three-level structure comprising mixed classrooms, offices and the school administration proposed for demolition;
- Building F – a warehouse style structure comprising maintenance storage and teaching facilities proposed for refurbishment; and
- Building AY – a single level structure comprising agricultural teaching facilities and office space proposed for refurbishment.

The layout of the site and the location of subject structures included as part of the SSD application are shown in **Figure 2** and **Appendix B**.

### 1.2 Previous Reports

A HBMS investigation was completed by JBS&G of all structures within the Murwillumbah High School precinct in October 2022. The findings of the October 2022 HBMS are detailed in the JBS&G report identified as:

- *R01 Hazardous Building Material Survey, Murwillumbah High School, 86 Riverview Street Murwillumbah, NSW, JBS&G Australia Pty Ltd, 22 October 2021, ref: 60082/141,402 (JBS&G 2021).*

Previous asbestos materials assessments have also been completed at the site with a site wide asbestos register and site Asbestos Management Plan (AMP) prepared for the site and identified as:

- *Asbestos Register – Murwillumbah High School. NSW Department of Education, 9 September 2020 and last reviewed on 8 October 2015 by WSP Australia Pty Ltd (DoE 2020); and*
- *Asbestos in Grounds Management Plan – Murwillumbah High School (8129), Murwillumbah, NSW. AECOM Australia Pty Ltd, 15 June 2020, ref: 60535203 (AECOM 2020).*

This report should be read in conjunction with all previous reports listed.

### 1.3 Objectives

The objective of the HBMS was to determine the presence, quantity, and condition of any hazardous materials within the buildings prior to proposed demolition and refurbishment works as part of the site's redevelopment.

This report details the outcomes of the previous inspections complete at the site with reference to the presence of hazardous building materials and provides recommendations on requirements for the removal of identified hazardous materials in accordance with regulations and guidance in force at the time of the inspection.

The nominated structures were inspected for the following hazardous materials:

- Asbestos containing materials (ACMs);
- Asbestos containing dust (ACD);
- Lead based paints (LP);
- Lead containing Dust (LCD)
- Synthetic mineral fibres (SMF); and
- Polychlorinated biphenyls (PCB).

### 1.4 Relevant Legislation / Guidelines

The HBMS and production of this report have been undertaken in accordance with the requirements of:

- *Work Health and Safety Act (2011)*;
- *Work Health and Safety Regulation (2017)*;
- *How to Safely Remove Asbestos Code of Practice, SafeWork NSW, (2019) (SWNSW 2019a)*;
- *How to Manage and Control Asbestos in the Workplace Code of Practice, SafeWork NSW (2019) (SWNSW 2019b)*;
- Australian Standard 4361.2 (1998) *Guide to Lead Paint Management - Part 2: Residential and Commercial Buildings (AS4361.2-1998)*;
- Australian Standard 4361.2 (2017) *Guide to Hazardous Paint Management - Part 2: Lead Paint in Residential, Public and Commercial Buildings (AS4361.2-2017)*;
- National Occupational Health and Safety Commission's *National Standard for Synthetic Mineral Fibres [NOHSC:1004(1990)]*;
- National Occupational Health and Safety Commission's *National Code of Practice for the Safe Use of Synthetic Mineral Fibres, [NOHSC:2006(1990)]*;
- Australian and New Zealand Environment Conservation Council's *Identification of PCB-containing Capacitors: An information booklet for Electricians and Electrical Contractors, (ANZECC 1997)*; and
- NSW EPA *Waste Classification Guidelines Part 1: Classifying Waste (NSW EPA 2014)*.

### 1.5 Hazardous Materials Survey Limitations

Whilst all reasonable care has been taken by JBS&G during the completed HBMS, this report is limited due to:

- Only safely accessible areas of the site were surveyed.

- Access restrictions to operational areas such as energised services, gas, air conditioning/heating, pressurised vessels, chemical lines etc.
- Potential materials located in areas in which they could not reasonably be envisaged or anticipated.
- Limited access to internal building components e.g. set floor, walls, ceiling cavities etc., in which case only representative areas were inspected with the hand tools available to the JBS&G consultants for minor destructive investigation.
- Access restrictions to areas above 3 metres or any area deemed inaccessible without the use of specialised equipment including external roof lines and structural components at height, roof guttering and down pipes and exhausts and vents;
- Access to restrictions to areas of structures where the structural integrity for the floor and/or ceiling has been compromised.
- Service pits, confined spaces, voids, cavities within the building structure and internal areas of plant and equipment that could not be safely accessed.

It should be noted that buildings built between the 1930s - 1980s may have general occurrences of ACMs in areas which are not readily accessible with the hand tools available for the survey. These areas and materials include, inter alia:

- Fibre Cement Sheeting (FCS) used as packing to bearers and joists in the underfloor void or as boxing/shuttering to concrete formwork;
- FCS packing between window/door frames and timber studs; and
- Compressed FCS underneath tiled floor areas.

Whilst all care is taken by the consultants to uncover concealed materials, not all areas can be accessed within the allowable timeframe without more industrial (power) tools. As such, only minor destructive sampling techniques were employed to gain access within authorised areas.

Consequently, without substantial demolition of the building, it is not possible to guarantee that every source of hazardous material has been detected. JBS&G recommends that areas inaccessible during the survey be inspected as part of the demolition process. If suspected hazardous materials are observed, the presence or absence of hazardous materials can be confirmed via laboratory testing.

In the event suspected hazardous materials are identified during strip out or demolition which are not included in this report, JBS&G recommends that works should cease, and an assessment of the materials undertaken by a competent person/licensed asbestos assessor for further appropriate recommendations.

No one section or part of a section of this report is to be taken as giving an overall idea of this report. Each section is to be read in conjunction with the whole of this report, including the appendices and attachments and all previous reports as detailed in **Section 1.2**.

## 2. Methodology

### 2.1 Hazardous Materials

#### 2.1.1 Asbestos Containing Materials and Asbestos Containing Dust

Representative samples of suspected ACMs and ACDs were collected where possible and placed into a zip-lock bags. These were subsequently delivered to a NATA accredited laboratory for analysis using polarised light microscopy in conjunction with dispersion staining techniques. Similar materials to those analysed or other materials known to contain asbestos from the consultant's experience (e.g. Electrical backing boards, corrugated asbestos cement roofs and older fibre cement sheeting) or materials not accessible may also be assumed to contain asbestos as per the relevant Code of Practice.

At the time of inspection, the following details were recorded:

- Location;
- Type of material;
- Accessibility;
- Condition;
- Friability; and
- Volume/dimensions.

#### 2.1.2 Lead Based Paint

Australian Standard AS4361.2 (2017) *Guide to Hazardous Paint Management - Part 2: Lead Paint in Residential, Public and Commercial Buildings* defines lead paints as those in which the lead content (calculated as lead metal) is in excess of 0.1 percent by weight (0.1% w/w) of the dry film. This can be determined by field spot tests, laboratory testing or the use of portable X-ray fluorescence (XRF) field tests. JBS&G utilises XRF technology as a screening tool for the identification of lead based paints in the field. An XRF screening level detection of lead greater than 0.1 mg/cm<sup>2</sup> was adopted for the assessment of lead based paints for this investigation, with representative samples collected where possible and delivered to a NATA accredited laboratory for analysis using inductively coupled plasma optical emission spectrometry (ICP-OES).

#### 2.1.3 Lead Containing Dust

Representative samples of accumulated or settled dust were collected and delivered to a NATA accredited laboratory for analysis via ICP-OES. A conservative assessment criteria was adopted for this investigation given the potential for human exposure during demolition and refurbishment works and the readily disturbed and uncontained nature of accumulated or settled dust.

Concentrations of lead within accumulated or settled dust were compared against the health investigation level (HIL) for residential sites with garden/accessible soil of 300 mg/kg as outlined in National Environment Protection Measure (NEPC 2013) guidelines.

#### 2.1.4 Polychlorinated Biphenyls

Old fluorescent light fittings and other appliances which may contain capacitors containing PCB dielectric oil are identified by inspection and evaluation with the consultant's experience of similar light fittings and appliances. Alternatively, where possible and when it was safe to do so, a representative light fitting was opened to reveal the capacitor and the make and model recorded to be compared against the ANZECC (1997) list of PCB containing capacitors.

### **2.1.5 Synthetic Mineral Fibres**

SMF containing materials were either sampled as per the asbestos methodology or assumed to contain SMF from the consultant's experience of similar materials.

### **2.2 Inaccessible Areas**

As per SWNSW 2019b, any areas not accessible must be recorded as such. Where hazardous materials are suspected to be contained within inaccessible areas, these shall be documented in this report and the associated Hazardous Materials Register (**Appendix A**).

### 3. Site Description

The HBMS was conducted on 20-21 September and 4-5 October 2021 by Michael Samuel and Aaron Smith, two of JBS&G's senior and experienced hazardous materials surveyors and SafeWork NSW Licensed Asbestos Assessors (LAA 000157 and LAA 001001 respectively). The HBMS was completed during non-operational school hours.

The site was bound by:

- Riverview Street to the north west;
- Low density housing and sporting field to the north;
- Sporting fields to the north east and east; and
- Agricultural land uses to the west and south.

Interiors of each structure are identified as per the DoE 2020 format of identification. Structure layout plans showing locations of each room, movement/hallway areas and other features are provided as **Appendix B**.

The type, location, friability, accessibility, and approximate quantities of identified and suspected hazardous materials are provided in the Hazardous Materials Register in **Appendix A**. Photographs taken during the HBMS are presented in **Appendix C**. A summary of the observations made during the HBMS is included in the following sections.

#### 3.1 Building A

##### 3.1.1 Exterior

Building A was located in the north western portion of the site and comprised a three level structure of predominantly brick construction. A steel sheet roof lining with steel guttering and downpipes and painted timber window and door frames and doors was observed.

A summary of the key findings from the exterior HBMS is as follows:

- Non-asbestos window mastic sealants (A-01) were identified to the twin double window styles observed to the lower (basement) level of the northern, eastern and western faces. Twin triple window styles observed to the upper two levels did not contain mastic sealants.
- Asbestos containing flat sheet eaves (A-03) were confirmed to be present to the eastern face and are assumed to be consistent to all faces and levels of Building A.
- Non asbestos containing black membrane material (A-02) was observed above the double green entry door to the eastern extent of the northern face.
- Lead based yellow and green painted timber window frames (XRF – 1.6mg/cm<sup>2</sup>).

##### 3.1.2 Interior

Interior areas of the structure are identified as per the layouts provided in **Appendix B**.

###### 3.1.2.1 Lower/Basement Level

A summary of the key findings from the HBMS is as follows:

- AR9005 – non asbestos fire door insulation core (A-16).
- AR9005 – lead based cream painted cement rendered walls (XRF – 5.00 mg/cm<sup>2</sup>).
- AR9006 – lead based cream painted cement rendered walls (consistent with AR9005).
- AR9007 – lead based cream painted cement rendered walls (consistent with AR9005).

- AR9008 – lead based cream painted cement rendered walls (consistent with AR9005).
- AR9009 – lead based cream painted cement rendered walls (consistent with AR9005).
- AR9014 – assumed asbestos containing 12” vinyl floor tiles to stairs (consistent with sample A-10).
- AR9015 – assumed asbestos containing 12” vinyl floor tiles to stairs (consistent with sample A-10).
- AR9016 – assumed asbestos containing 12” vinyl floor tiles to stairs (consistent with sample A-10).
- AR9016 – lead based cream painted brick walls (consistent with AR9005).
- AR9016 – assumed asbestos containing flat sheeting (A-15) surrounding door. Although sample A-15 returned a negative result for presence of asbestos, previous testing as per DoE 2020 has identified asbestos containing materials.
- Non identified sub floor area accessed via AR9005:
  - Non-asbestos containing bituminous cable sheathing (A-17).
  - Loose asbestos containing fibre cement debris to ground surface (A-18).
- Inaccessible areas included:
  - AR9017 internal areas due to locked door.

### 3.1.2.2 Ground Level

A summary of the key findings from the HBMS is as follows:

- AR0001 – assumed asbestos containing 12” vinyl floor tiles to stairs (consistent with sample A-10).
- AR0004 – asbestos containing vinyl floor tiles with non-asbestos containing black adhesive concealed beneath carpeted floor (A-08).
- AR0007 – assumed asbestos containing vinyl floor tiles with non-asbestos black adhesive concealed beneath carpeted floor (consistent with sample A-08).
- AR0008 – assumed asbestos containing vinyl floor tiles with non-asbestos black adhesive concealed beneath carpeted floor (consistent with sample A-08).
- AR0009 – assumed asbestos containing vinyl floor tiles with non-asbestos black adhesive concealed beneath carpeted floor (consistent with sample A-08).
- AR0009 – non-asbestos residual render material (sample A-06) to internal wall of redundant fire place flue.
- AR0010 – assumed asbestos containing vinyl floor tiles with non-asbestos black adhesive concealed beneath carpeted floor (consistent with sample A-08).
- AR0011 – assumed asbestos containing vinyl floor tiles with non-asbestos black adhesive concealed beneath carpeted floor (consistent with sample A-08).
- AR0013 – assumed asbestos containing vinyl floor tiles with non-asbestos black adhesive (consistent with sample A-08).
- AR0016, ceiling space – non-asbestos containing settled dust (A-04) and lead impacted settled dust (A-L01, 1,100 mg/kg).
- AR0016, ceiling space – non asbestos black membrane sarking (A-05).

- AR0017 – assumed asbestos containing 12” vinyl floor tiles (consistent with sample A-10).
- AR0018 – asbestos containing 12” vinyl floor tiles (A-10).
- AR0018 – non-asbestos fire door insulation core (consistent with sample A-16).
- AR0018 – lead based cream painted walls (A-L03 – 0.15% w/w).
- AR0019 – Non-asbestos fibre cement board lining (A-09) concealed beneath fibre board and vinyl sheet flooring.
- AR0021 – assumed asbestos containing vinyl floor tiles with non-asbestos black adhesive concealed beneath carpeted floor (consistent with sample A-08).
- AR0023 – assumed asbestos containing 12” vinyl floor tiles (consistent with sample A-10).
- AR0024 – assumed asbestos containing 12” vinyl floor tiles (consistent with sample A-10).

### 3.1.2.3 First Level

A summary of the key findings from the HBMS is as follows:

- AR1001 – assumed asbestos containing vinyl floor tiles concealed beneath carpeted floor (consistent with sample A-13).
- AR1001 – assumed ACM sheet ceiling space access hatch.
- AR1002 – assumed asbestos containing vinyl floor tiles concealed beneath carpeted floor (consistent with sample A-13).
- AR1003 – assumed asbestos containing vinyl floor tiles concealed beneath carpeted floor (consistent with sample A-13).
- AR1004 – assumed asbestos containing vinyl floor tiles concealed beneath carpeted floor (consistent with sample A-13).
- AR1005 – assumed asbestos containing vinyl floor tiles (consistent with sample A-13).
- AR1006 – assumed asbestos containing vinyl floor tiles concealed beneath carpeted floor (consistent with sample A-13).
- AR1007 – assumed ACM sheet ceiling space access hatch.
- AR1007, ceiling space – non asbestos containing settled dust (A-14) and lead impacted settled dust (A-L02, 700 mg/kg).
- AR1009 – assumed asbestos containing vinyl floor tiles concealed beneath carpeted floor (consistent with sample A-13).
- AR1010 – assumed asbestos containing vinyl floor tiles concealed beneath carpeted floor (consistent with sample A-13).
- AR1010/AR1011 – asbestos containing flat sheet dividing wall (A-11).
- AR1011 – assumed asbestos containing vinyl floor tiles concealed beneath carpeted floor (consistent with sample A-13).
- AR1012 – assumed asbestos containing vinyl floor tiles concealed beneath carpeted floor (consistent with sample A-13).
- AR1013 – asbestos containing vinyl floor tiles (as per DoE 2020).
- AR1014 – assumed asbestos containing vinyl floor tiles concealed beneath carpeted floor (consistent with sample A-13).

- AR1014 – asbestos containing fibre board (A-12) to top of cross ventilation points along hallway southern wall. Consistent asbestos fibre boards are assumed to also be present within cross ventilation points to southern structure wall (i.e. extending to exterior from rooms AR1002-AR1006). Total of 20 cross ventilation points observed.
- AR1014 – lead based white painted walls (A-L04, 1.8% w/w).
- AR1015 – asbestos containing 12” vinyl floor tiles (A-13).

## **3.2 Building E**

### **3.2.1 Exterior**

Building E was located in the north western portion of the site and comprised a three level structure of predominantly brick construction with concrete walkways to the southern extent. A steel sheet roof lining with steel guttering and downpipes, aluminium window frames and timber door frames and doors were observed.

A summary of the key findings from the exterior HBMS is as follows:

- Two asbestos containing ventilation pipes were observed to protrude from the western and eastern extents of the roof lining that are assumed to be associated with the hot water ventilation pipes identified in the basement level (sub-floor) areas ER9001 and ER9002 (refer **Section 3.2.2.1**).
- An additional suspected asbestos containing ventilation pipe was also observed to the western extent of the roof lining, however, no evidence of this ventilation pipe could be identified in underlying interiors of the structure.
- Suspected asbestos waterproofing membrane beneath pebblecrete roof lining above administration portion of Building E. No access was available at time of inspection.

### **3.2.2 Interior**

Interior areas of the structure are identified as per the layouts provided in **Appendix B**.

#### **3.2.2.1 Basement Level**

A summary of the key findings from the exterior HBMS is as follows:

- ER9001 – asbestos containing ventilation pipe (consistent with sample E-10) with asbestos containing mastic to pipe collars (consistent with sample E-11) extending from hot water unit. Pipe assumed to extend to external roof lining above second level.
- ER9001 – assumed SMF internal insulation to hot water unit.
- ER9002 – asbestos containing ventilation pipe (consistent with sample E-10) with asbestos containing mastic to pipe collars (E-11) extending from hot water unit. Pipe assumed to extend to external roof lining above second level.
- ER9002 – assumed SMF internal insulation to hot water unit.

#### **3.2.2.2 Ground Level**

A summary of the key findings from the HBMS is as follows:

- Asbestos external window frames mastic sealant (E-01). *Although E-01 returned a negative result for presence of asbestos, materials are of consistent appearance and characteristics to those observed in Building B as detailed in JBS&G 2021 which returned a positive result for asbestos (refer sample B-01, JBS&G 2021) and are therefore assumed to also contain asbestos.*

- Asbestos containing grey filler/putty to exterior of external window frames (E-02). These should be assumed to be present to all aluminium windows.

### 3.2.2.3 First Level

A summary of the key findings from the HBMS is as follows:

- Assumed asbestos containing filler/putty to exterior of all external window frames (refer sample E-02).
- ER1005 – non-asbestos containing vinyl sheet compound lining concealed beneath carpeted floors (E-03).
- ER1006/ER1007 – assumed non-asbestos containing vinyl sheet compound lining concealed beneath carpeted floors (consistent with sample E-03).
- ER1006/ER1007 – non-asbestos flat sheet dividing wall (E-04).
- ER1016 – non-asbestos beige vinyl floor tiles (E-05).
- ER1024/unlabelled data cupboard area – residual asbestos containing green vinyl floor tiles (E-06) with non-asbestos adhesive at doorway.
- ER1024 – assumed asbestos containing green vinyl floor tiles concealed beneath carpeted floors (consistent with sample E-06).

### 3.2.2.4 Second Level

A summary of the key findings from the HBMS is as follows:

- Assumed asbestos containing filler/putty to exterior of all external window frames (refer sample E-02).
- ER2001 – assumed non-asbestos vinyl sheet compound lining concealed beneath carpeted floors (consistent with sample E-03).
- ER2002/ER2014 – assumed non-asbestos vinyl sheet compound lining concealed beneath carpeted floors (consistent with sample E-03).
- ER2003/ER2004/ER2013 – assumed non-asbestos vinyl sheet compound lining concealed beneath carpeted floors (consistent with sample E-03).
- ER2005 – assumed non-asbestos vinyl sheet compound lining concealed beneath carpeted floors (consistent with sample E-03).
- ER2006/ER2007 – assumed non-asbestos vinyl sheet compound floor lining (consistent with sample E-03).
- ER2008 – assumed non-asbestos vinyl sheet compound lining concealed beneath carpeted floors (consistent with sample E-03).
- ER2009 – asbestos containing ventilation pipe (E-10) extending from floor to ceiling with asbestos mastic sealant to pipe collar joins (E-09). Pipe is assumed to extend from ER9002 in basement level (refer **Section 3.2.2.1**).
- ER2010 – assumed SMF internal insulation to hot water unit.
- ER2011 – assumed asbestos containing resinous electrical backing board (no sample collected due to electrical hazard) and asbestos containing internal door lining to electrical cupboard (E-07). Noted to not previously be identified in DoE 2020.
- ER2015 – asbestos containing flat sheet ceiling lining (as per DoE 2020).

- ER2016 – asbestos containing flat sheet ceiling lining (as per DoE 2020).
- ER2017 – asbestos containing flat sheet ceiling lining (as per DoE 2020).
- Assumed asbestos containing flat sheet eave linings extending from ER2017 along the northern extent of Building E to join with ER2015 to eastern extent of Building E. This item was not previously identified in DoE 2020 and does not have a specified room identification.

### **3.3 Building F**

#### **3.3.1 Exterior**

Building F was located in the central portion of the site and comprised a warehouse style structure of predominantly steel sheet construction with steel I-beams and steel sheet roof lining. The structure appeared to be of modern construction.

No suspected hazardous building materials were identified to the exterior of Building F.

#### **3.3.2 Interior**

A summary of the key findings from the HBMS is as follows:

- FR0001/FR0002/FR0003 – suspected SMF insulation concealed by aluminium sarking to ceiling lining.
- FR0001 – suspected SMF internal insulation within southern dividing wall lining.
- FR0002/FR0003 – suspected SMF internal insulation within northern dividing wall lining.

### **3.4 Building AY**

#### **3.4.1 Exterior**

Building AY was located in the central portion of the site and comprised a single level structure with brick construction and weatherboard cladding and steel sheet roof lining.

A summary of the key findings of the exterior HBMS is as follows:

- Asbestos containing white weatherboard cladding (AY-01) to the north western exterior walls (exterior walls to AYR0004).

#### **3.4.2 Interior**

Interior areas of the structure are identified as per the layouts provided in **Appendix B**.

A summary of the key findings of the HBMS is as follows:

- AYR0001 – asbestos containing flat sheet ceiling lining (as per DoE 2020).
- AYR0002 – assumed SMF internal insulation materials to hot water unit.
- AYR0003 – assumed SMF insulation within ceiling aluminium sarking lining.
- AYR0004 – asbestos containing flat sheet walls (as per DoE 2020).

## **4. Results**

### **4.1 Hazardous Materials**

All identified and suspected hazardous building materials are recorded in the Hazardous Materials Register in **Appendix A** with relevant photographs in **Appendix C**. NATA accredited laboratory analysis reports and chain of custody are provided in **Appendix D**.

### **4.2 Inaccessible Areas**

There is potential for additional hazardous materials to be contained within inaccessible areas of the site as outlined in the following points:

- Building A – AR9017.

## 5. Conclusions and Recommendations

Based on the scope of this assessment and with reference to the limitations included in **Section 6**, the following conclusions are made with respect to the Hazardous Materials Survey completed.

### 5.1 Hazardous Building Materials

Identified and suspected hazardous building materials were observed throughout the site as a result of visual identification and laboratory analysis. A number of the identified hazardous building materials present a significant exposure risk to current and future site occupants, maintenance workers/contractors and demolition workers if they are not appropriately managed/removed. It is recommended that a hazardous materials management plan be prepared for the site detailing the procedures for the management and removal of the identified hazardous materials to be implemented prior to and for the duration of the proposed demolition and refurbishment works.

The following broad recommendations are made for the removal of the identified hazardous materials to potentially mitigate harmful effects as a result of the proposed works program. The person with management or control of the site, must ensure so far as is reasonably practicable that the identified hazardous materials are removed prior to the commencement of the proposed demolition works.

The identified and suspected hazardous materials are presented in the Hazardous Materials Register included as **Appendix A**.

#### 5.1.1 Asbestos Containing Materials

##### 5.1.1.1 Non-Friable Asbestos Containing Materials

Non-friable ACM has been identified in various forms throughout Building A, Building E and Building F. Prior to the demolition or refurbishment of structures, it is recommended that the following work is undertaken:

- A Class A or Class B licensed asbestos removalist shall be engaged to remove all ACM as identified in the Hazardous Materials Register (**Appendix A**). Removal and disposal of non-friable asbestos materials shall be undertaken in accordance with the *Work Health and Safety Act (2011)*, *Work Health and Safety Regulation (2017)* and SWNSW 2019a.
- While not mandatory during the removal of non-friable ACM, it is considered best practice that asbestos air monitoring is also undertaken by an independent LAA during all non-friable asbestos removal works.
- Following completion of non-friable asbestos removal works within each building, a clearance inspection shall be undertaken by the independent LAA or competent person to ensure that all the ACM identified in the Hazardous Materials Register (**Appendix A**) have been removed to a satisfactory industry standard.
- Following the completion of the clearance inspection, a clearance certificate shall be issued by the LAA or competent person to confirm that the identified non-friable asbestos hazards have been successfully removed and that each building is suitable for proposed demolition works to commence.

#### 5.1.2 Lead Containing Dust

Elevated levels of lead in dust above the adopted site criteria were identified at the site. A suitably experienced hazardous materials removal contractor should be engaged to remove the lead containing dust in accordance with the AS4361.2-2017 prior to the commencement of any demolition works.

Any lead impacted dust waste generated from the site is pre-classified as General Solid Waste (non-putrescible) due to the sites use as an educational institution in accordance with NSW EPA 2014.

### **5.1.3 Lead Based Paints**

The lead based paints, as identified in Hazardous Materials Register (**Appendix A**), ranged in condition from good to fair and should be managed in accordance with the AS4361.2-2017. Where peeling or deteriorated they should be removed under controlled conditions by an experienced contractor prior to demolition. Stable lead based paints adhered to building fabric can be disposed as general solid waste in accordance with NSW EPA 2014 provided care is taken to minimise any potential for paint flakes to be dispersed onto ground surfaces and building and demolition waste is not proposed to be recycled.

Where building and demolition wastes are proposed to be recycled that are impacted by lead paints, the lead paints must be stripped prior to off-site disposal.

Any lead paint waste generated from the site is pre-classified as General Solid Waste (non-putrescible) due to the sites use as an educational institution in accordance with NSW EPA 2014.

### **5.1.4 Polychlorinated Biphenyls**

All old fluorescent light fittings throughout the site are to be treated as containing PCB capacitors unless further investigation confirms otherwise. These light fittings should be removed and disposed of as Scheduled Waste or re-inspected once safe access can be provided to confirm the presence or absence of PCB capacitors.

### **5.1.5 Synthetic Mineral Fibres**

The synthetic mineral fibres encountered during this inspection were generally contained and deemed to be low risk. These SMF materials can be removed with the building and demolition waste with care taken not to generate fibres. Appropriate PPE is recommended including the use of P2 respirator as minimum and appropriate removal methodology as outlined in [NOHSC: 1004(1990)] and [NOHSC: 2006(1990)].

## **5.2 Inaccessible Areas**

Areas deemed to be inaccessible during the current HBMS (refer **Section 4.2**) should be inspected by a suitably qualified competent person prior to any works commencing. Suspected hazardous building materials should be sampled by a suitably qualified competent person prior to any works commencing.

## **5.3 Unexpected Finds**

Any materials deemed to be consistent with those detailed in the Hazardous Materials Register that have not been previously identified should be assumed to have the same content and be treated accordingly.

Should any additional suspected hazardous materials be observed during or prior to demolition works, works should cease until a suitably qualified occupational hygienist can assess the suspected hazardous material and provide appropriate recommendations for management and/or removal.

## 6. Limitations

This report has been prepared for use by the client who has commissioned the works in accordance with the project brief only, and has been based in part on information obtained from the client and other parties.

The advice herein relates only to this project and all results conclusions and recommendations made should be reviewed by a competent person with experience in environmental investigations, before being used for any other purpose.

JBS&G accepts no liability for use or interpretation by any person or body other than the client who commissioned the works. This report should not be reproduced without prior approval by the client, or amended in any way without prior approval by JBS&G, and should not be relied upon by other parties, who should make their own enquiries.

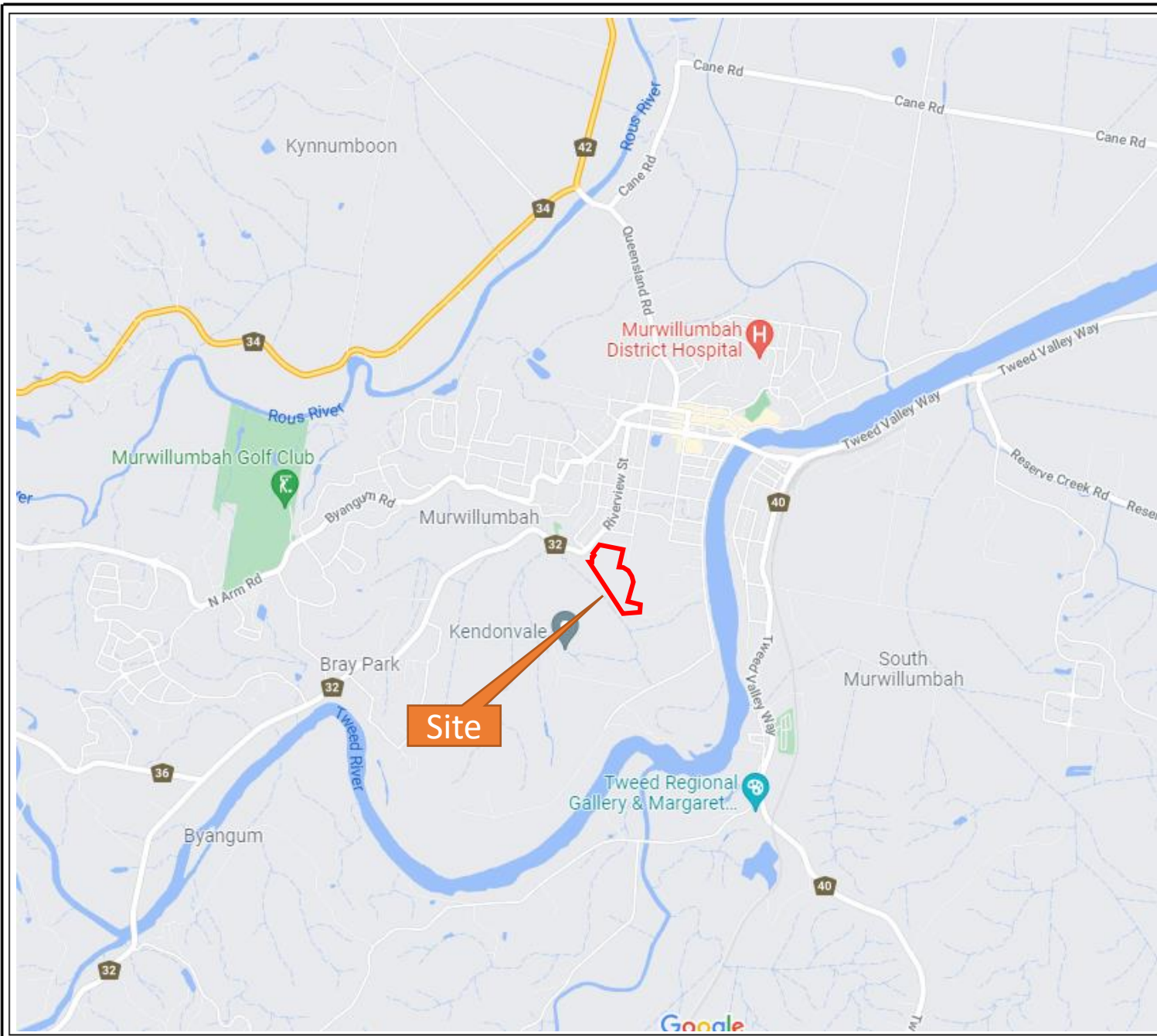
Sampling and chemical analysis of environmental media is based on appropriate guidance documents made and approved by the relevant regulatory authorities. Conclusions arising from the review and assessment of environmental data are based on the sampling and analysis considered appropriate based on the regulatory requirements.


Limited sampling and laboratory analyses were undertaken as part of the investigations undertaken, as described herein. Ground conditions between sampling locations and media may vary, and this should be considered when extrapolating between sampling points. Chemical analytes are based on the information detailed in the site history. Further chemicals or categories of chemicals may exist at the site, which were not identified in the site history and which may not be expected at the site.

Changes to the subsurface conditions may occur subsequent to the investigations described herein, through natural processes or through the intentional or accidental addition of contaminants. The conclusions and recommendations reached in this report are based on the information obtained at the time of the investigations.

This report does not provide a complete assessment of the environmental status of the site, and it is limited to the scope defined herein. Should information become available regarding conditions at the site including previously unknown sources of contamination, JBS&G reserves the right to review the report in the context of the additional information.


## Figures



**Legend:**  
 Approximate site boundary



Job No: 60882  
 Client: Built Pty Ltd  
 Version: R04 Rev 0      Date: 15/03/2022  
 Drawn By: RS      Checked By: MS

Approximate Scale 

Coor. Sys. GDA 1994 MGA Zone 58


**Murwillumbah High School**  
 86 Riverview Street  
 Murwillumbah, NSW

**SITE LOCATION**

**FIGURE: 1**



Legend:

 Approximate site boundary




Job No: 60882

Client: Built Pty Ltd

Version: R04 Rev 0      Date: 15/03/2022

Drawn By: RS      Checked By: MS

Approximate Scale 

Coor. Sys. GDA 1994 MGA Zone 58

**Murwillumbah High School**

86 Riverview Street  
Murwillumbah, NSW

SITE LAYOUT

FIGURE: 2

## Appendix A Hazardous Materials Register

**Hazardous Materials Register (R04-Rev 0)**  
**Murwillumbah High School, 36 Riverview Street, Murwillumbah, NSW**  
**Building A**

Date of Production – 15 March 2022



JBS&G SAMPLE NO.	LOCATION	MATERIAL DESCRIPTION	PHOTO NUMBER	ACCESSIBLE AREA?	FRIABILITY	ANALYTICAL RESULT	MATERIAL CONDITION	APPROX. QUANTITY	ACTION REQUIRED	DATE OF LAST INSPECTION (INCL. COMPANY NAME AND INITIALS)	DATE OF CONTROL ACTION &/OR REMOVAL
<b>Asbestos Containing Materials (ACM)</b>											
A-01	External – window mastic	Mastic sealant to twin double windows	-	-	-	No asbestos detected	-	-	-	5/10/2021 JBS&G MS & AS	
A-02	External – eastern portion of north face	Black membrane above double green door	-	-	-	No asbestos detected	-	-	-	5/10/2021 JBS&G MS & AS	
A-03	External – Eaves to all faces and levels	Flat sheeting	3	Yes	Non-Friable	<b>Chrysotile and Amosite Asbestos</b>	Good	100 m <sup>2</sup>	Maintain in good condition OR Remove prior to demolition in accordance with SWNSW 2019a	5/10/2021 JBS&G MS & AS	
A-16	AR9005 – Basement level	Fire door insulation core	-	-	-	No asbestos detected	-	-	-	5/10/2021 JBS&G MS & AS	
As per sample A-10	AR9014 – Basement level	12" vinyl floor tiles	5	Yes	Non-Friable	<b>Assumed to contain asbestos</b>	Good	10 m <sup>2</sup>	Maintain in good condition OR Remove prior to demolition in accordance with SWNSW 2019a	5/10/2021 JBS&G MS & AS	
As per sample A-10	AR9015 – Basement level	12" vinyl floor tiles	5	Yes	Non-Friable	<b>Assumed to contain asbestos</b>	Good	10 m <sup>2</sup>	Maintain in good condition OR Remove prior to demolition in accordance with SWNSW 2019a	5/10/2021 JBS&G MS & AS	
As per sample A-10	AR9016 – Basement level	12" vinyl floor tiles	5	Yes	Non-Friable	<b>Assumed to contain asbestos</b>	Good	25 m <sup>2</sup>	Maintain in good condition OR Remove prior to demolition in accordance with SWNSW 2019a	5/10/2021 JBS&G MS & AS	
A-15 (refer DoE 2020)	AR9016 – Basement level	Flat sheet in fill panels surrounding door to AR9017	-	Yes	Non-Friable	No asbestos detected <i>Assume asbestos is present due to previous DoE 2020 results</i>	Good	3m <sup>2</sup>	Maintain in good condition OR Remove prior to demolition in accordance with SWNSW 2019a	5/10/2021 JBS&G MS & AS	
A-17	Sub floor area accessed via AR9005	Bituminous cable sheathing	14	-	-	No asbestos detected	-	-	-	5/10/2021 JBS&G MS & AS	
A-18	Sub floor area accessed via AR9005	Loose fibre cement debris to ground surface	15	No	Non-friable	<b>Chrysotile and Amosite asbestos detected</b>	Fair	<1m <sup>2</sup>	Remove in accordance with SWNSW 2019a	5/10/2021 JBS&G MS & AS	

**Hazardous Materials Register (R04-Rev 0)**  
**Murwillumbah High School, 36 Riverview Street, Murwillumbah, NSW**  
**Building A**

Date of Production – 15 March 2022



JBS&G SAMPLE NO.	LOCATION	MATERIAL DESCRIPTION	PHOTO NUMBER	ACCESSIBLE AREA?	FRIABILITY	ANALYTICAL RESULT	MATERIAL CONDITION	APPROX. QUANTITY	ACTION REQUIRED	DATE OF LAST INSPECTION (INCL. COMPANY NAME AND INITIALS)	DATE OF CONTROL ACTION &/OR REMOVAL
As per sample A-10	AR0001 – Ground level	12" vinyl floor tiles	5	Yes	Non-Friable	Assumed to contain asbestos	Good	20 m <sup>2</sup>	Maintain in good condition OR Remove prior to demolition in accordance with SWNSW 2019a	5/10/2021 JBS&G MS & AS	
A-08	AR0004 – Ground level	Brown vinyl floor tile beneath carpet	7	No	Non-friable	Chrysotile asbestos detected	Good	50m <sup>2</sup>	Maintain in good condition OR Remove prior to demolition in accordance with SWNSW 2019a	5/10/2021 JBS&G MS & AS	
As per sample A-08	AR0007 – Ground level	Brown vinyl floor tile beneath carpet	7	No	Non-friable	Assumed to contain asbestos	Good	56m <sup>2</sup>	Maintain in good condition OR Remove prior to demolition in accordance with SWNSW 2019a	5/10/2021 JBS&G MS & AS	
As per sample A-08	AR0008 – Ground level	Brown vinyl floor tile beneath carpet	7	No	Non-friable	Assumed to contain asbestos	Good	55m <sup>2</sup>	Maintain in good condition OR Remove prior to demolition in accordance with SWNSW 2019a	5/10/2021 JBS&G MS & AS	
As per sample A-08	AR0009 – Ground level	Brown vinyl floor tile beneath carpet	7	No	Non-friable	Assumed to contain asbestos	Good	55m <sup>2</sup>	Maintain in good condition OR Remove prior to demolition in accordance with SWNSW 2019a	5/10/2021 JBS&G MS & AS	
A-06	AR0009 – Ground level	Render like cement material to internal wall of redundant fireplace flue	12	-	-	No asbestos detected	-	-	-	5/10/2021 JBS&G MS & AS	
As per sample A-08	AR0010 – Ground level	Brown vinyl floor tile beneath carpet	7	No	Non-friable	Assumed to contain asbestos	Good	50m <sup>2</sup>	Maintain in good condition OR Remove prior to demolition in accordance with SWNSW 2019a	5/10/2021 JBS&G MS & AS	
As per sample A-08	AR0011 – Ground level	Brown vinyl floor tile beneath carpet	7	No	Non-friable	Assumed to contain asbestos	Good	15m <sup>2</sup>	Maintain in good condition OR Remove prior to demolition in accordance with SWNSW 2019a	5/10/2021 JBS&G MS & AS	
As per sample A-08	AR0013 – Ground level	Brown vinyl floor tile	-	Yes	Non-friable	Assumed to contain asbestos	Good	1m <sup>2</sup>	Maintain in good condition OR Remove prior to demolition in accordance with SWNSW 2019a	5/10/2021 JBS&G MS & AS	
A-05	AR0016 – Ceiling space	Black membrane sarking	-	-	-	No asbestos detected	-	-	-	5/10/2021 JBS&G MS & AS	

**Hazardous Materials Register (R04-Rev 0)**  
**Murwillumbah High School, 36 Riverview Street, Murwillumbah, NSW**  
**Building A**

Date of Production – 15 March 2022



JBS&G SAMPLE NO.	LOCATION	MATERIAL DESCRIPTION	PHOTO NUMBER	ACCESSIBLE AREA?	FRIABILITY	ANALYTICAL RESULT	MATERIAL CONDITION	APPROX. QUANTITY	ACTION REQUIRED	DATE OF LAST INSPECTION (INCL. COMPANY NAME AND INITIALS)	DATE OF CONTROL ACTION &/OR REMOVAL
A-04	AR0016 – Ceiling space	Settled dust	-	-	-	No asbestos detected	-	-	-	5/10/2021 JBS&G MS & AS	
As per sample A-10	AR0017 – Ground level	12" vinyl floor tiles	5	Yes	Non-friable	<b>Assumed to contain asbestos</b>	Good	11m <sup>2</sup>	Maintain in good condition OR Remove prior to demolition in accordance with SWNSW 2019a	5/10/2021 JBS&G MS & AS	
A-10	AR0018 – Ground level	12" vinyl floor tiles	5	Yes	Non-friable	<b>Assumed to contain asbestos</b>	Good	20m <sup>2</sup>	Maintain in good condition OR Remove prior to demolition in accordance with SWNSW 2019a	5/10/2021 JBS&G MS & AS	
As per sample A-16	AR0018 – Ground level	Fire door insulation core	-	-	-	Assumed no asbestos	-	-	-	5/10/2021 JBS&G MS & AS	
A-09	AR0019 – Ground level	Fibre cement board beneath overlying fibre board and vinyl floor sheeting	8	-	-	No asbestos detected	-	-	-	5/10/2021 JBS&G MS & AS	
As per sample A-08	AR0021 – Ground level	Brown vinyl floor tile beneath carpet	7	No	Non-friable	<b>Assumed to contain asbestos</b>	Good	20m <sup>2</sup>	Maintain in good condition OR Remove prior to demolition in accordance with SWNSW 2019a	5/10/2021 JBS&G MS & AS	
As per sample A-10	AR0023 – Ground level	12" vinyl floor tiles	5	Yes	Non-friable	<b>Assumed to contain asbestos</b>	Good	10m <sup>2</sup>	Maintain in good condition OR Remove prior to demolition in accordance with SWNSW 2019a	5/10/2021 JBS&G MS & AS	
As per sample A-10	AR0024 – Ground level	12" vinyl floor tiles	5	Yes	Non-friable	<b>Assumed to contain asbestos</b>	Good	11m <sup>2</sup>	Maintain in good condition OR Remove prior to demolition in accordance with SWNSW 2019a	5/10/2021 JBS&G MS & AS	
As per sample A-13	AR1001 – First level	Brown vinyl floor tile beneath carpet	7	No	Non-friable	<b>Assumed to contain asbestos</b>	Good	25m <sup>2</sup>	Maintain in good condition OR Remove prior to demolition in accordance with SWNSW 2019a	5/10/2021 JBS&G MS & AS	
-	AR1001 – First level	Fibre cement access hatch to ceiling space	-	No	Non-friable	<b>Assumed to contain asbestos</b>	Good	1m <sup>2</sup>	Maintain in good condition OR Remove prior to demolition in accordance with SWNSW 2019a	5/10/2021 JBS&G MS & AS	

**Hazardous Materials Register (R04-Rev 0)**  
**Murwillumbah High School, 36 Riverview Street, Murwillumbah, NSW**  
**Building A**

Date of Production – 15 March 2022



JBS&G SAMPLE NO.	LOCATION	MATERIAL DESCRIPTION	PHOTO NUMBER	ACCESSIBLE AREA?	FRIABILITY	ANALYTICAL RESULT	MATERIAL CONDITION	APPROX. QUANTITY	ACTION REQUIRED	DATE OF LAST INSPECTION (INCL. COMPANY NAME AND INITIALS)	DATE OF CONTROL ACTION &/OR REMOVAL
As per sample A-13	AR1002 – First level	Brown vinyl floor tile beneath carpet	7	No	Non-friable	Assumed to contain asbestos	Good	55m <sup>2</sup>	Maintain in good condition OR Remove prior to demolition in accordance with SWNSW 2019a	5/10/2021 JBS&G MS & AS	
As per sample A-13	AR1003 – First level	Brown vinyl floor tile beneath carpet	7	No	Non-friable	Assumed to contain asbestos	Good	60m <sup>2</sup>	Maintain in good condition OR Remove prior to demolition in accordance with SWNSW 2019a	5/10/2021 JBS&G MS & AS	
As per sample A-13	AR1004 – First level	Brown vinyl floor tile beneath carpet	7	No	Non-friable	Assumed to contain asbestos	Good	60m <sup>2</sup>	Maintain in good condition OR Remove prior to demolition in accordance with SWNSW 2019a	5/10/2021 JBS&G MS & AS	
As per sample A-13	AR1005 – First level	Brown vinyl floor tile	10	No	Non-friable	Assumed to contain asbestos	Good	30m <sup>2</sup>	Maintain in good condition OR Remove prior to demolition in accordance with SWNSW 2019a	5/10/2021 JBS&G MS & AS	
As per sample A-13	AR1006 – First level	Brown vinyl floor tile beneath carpet	7	No	Non-friable	Assumed to contain asbestos	Good	85m <sup>2</sup>	Maintain in good condition OR Remove prior to demolition in accordance with SWNSW 2019a	5/10/2021 JBS&G MS & AS	
-	AR1007 – First level	Fibre cement access hatch to ceiling space	13	No	Non-friable	Assumed to contain asbestos	Good	55m <sup>2</sup>	Maintain in good condition OR Remove prior to demolition in accordance with SWNSW 2019a	5/10/2021 JBS&G MS & AS	
A-14	AR1007 – Ceiling space	Settled dust	-	-	-	No asbestos detected	-	-	-	5/10/2021 JBS&G MS & AS	
As per sample A-13	AR1009 – First level	Brown vinyl floor tile beneath carpet	7	No	Non-friable	Assumed to contain asbestos	Good	20m <sup>2</sup>	Maintain in good condition OR Remove prior to demolition in accordance with SWNSW 2019a	5/10/2021 JBS&G MS & AS	
As per sample A-13	AR1010 – First level	Brown vinyl floor tile beneath carpet	7	No	Non-friable	Assumed to contain asbestos	Good	35m <sup>2</sup>	Maintain in good condition OR Remove prior to demolition in accordance with SWNSW 2019a	5/10/2021 JBS&G MS & AS	

**Hazardous Materials Register (R04-Rev 0)**  
**Murwillumbah High School, 36 Riverview Street, Murwillumbah, NSW**  
**Building A**

Date of Production – 15 March 2022



JBS&G SAMPLE NO.	LOCATION	MATERIAL DESCRIPTION	PHOTO NUMBER	ACCESSIBLE AREA?	FRIABILITY	ANALYTICAL RESULT	MATERIAL CONDITION	APPROX. QUANTITY	ACTION REQUIRED	DATE OF LAST INSPECTION (INCL. COMPANY NAME AND INITIALS)	DATE OF CONTROL ACTION &/OR REMOVAL
A-11	AR1010 – First level	Flat sheet western wall	-	Yes	Non-friable	<b>Chrysotile and Amosite asbestos detected</b>	Good	20m <sup>2</sup>	Maintain in good condition OR Remove prior to demolition in accordance with SWNSW 2019a	5/10/2021 JBS&G MS & AS	
As per sample A-11	AR1011 – First level	Flat sheet eastern wall	-	Yes	Non-friable	<b>Assumed to contain asbestos</b>	Good	10m <sup>2</sup>	Maintain in good condition OR Remove prior to demolition in accordance with SWNSW 2019a	5/10/2021 JBS&G MS & AS	
As per sample A-13	AR1011 – First level	Brown vinyl floor tile beneath carpet	7	No	Non-friable	<b>Assumed to contain asbestos</b>	Good	40m <sup>2</sup>	Maintain in good condition OR Remove prior to demolition in accordance with SWNSW 2019a	5/10/2021 JBS&G MS & AS	
As per sample A-13	AR1012 – First level	Brown vinyl floor tile beneath carpet	7	No	Non-friable	<b>Assumed to contain asbestos</b>	Good	35m <sup>2</sup>	Maintain in good condition OR Remove prior to demolition in accordance with SWNSW 2019a	5/10/2021 JBS&G MS & AS	
As per DoE 2020	AR1013 – First level	Brown vinyl floor tile	-	Yes	Non-friable	<b>Assumed to contain asbestos</b>	Fair, some damage	18m <sup>2</sup>	Maintain in good condition OR Remove prior to demolition in accordance with SWNSW 2019a	5/10/2021 JBS&G MS & AS	
As per sample A-13	AR1014 – First level	Brown vinyl floor tile beneath carpet	7	No	Non-friable	<b>Assumed to contain asbestos</b>	Good	80m <sup>2</sup>	Maintain in good condition OR Remove prior to demolition in accordance with SWNSW 2019a	5/10/2021 JBS&G MS & AS	
A-12	AR1014, Southern wall – First level	Fibre board to top of cross ventilation points along southern wall <i>(assumed to also be present within inaccessible vent points to First level structural southern wall)</i>	9	No (NB: some vents damaged and exposed)	Non-friable	<b>Chrysotile asbestos detected</b>	Good	20 units	Maintain in good condition OR Remove prior to demolition in accordance with SWNSW 2019a	5/10/2021 JBS&G MS & AS	
As per sample A-13	AR1015 – First level	Brown vinyl floor tile beneath carpet	7	No	Non-friable	<b>Assumed to contain asbestos</b>	Good	16m <sup>2</sup>	Maintain in good condition OR Remove prior to demolition in accordance with SWNSW 2019a	5/10/2021 JBS&G MS & AS	
<b>Lead Based Paints/Lead Impacted Dust</b>											
XRF	External – Ground level	Yellow and green painted timber window frames	2	Yes	-	<b>Lead based paint (1.6 mg/cm<sup>2</sup>)</b>	Good	Undefined	Maintain in good condition OR Remove in accordance with AS4361.2-2017	5/10/2021 JBS&G MS & AS	

**Hazardous Materials Register (R04-Rev 0)**  
**Murwillumbah High School, 36 Riverview Street, Murwillumbah, NSW**  
**Building A**

Date of Production – 15 March 2022



JBS&G SAMPLE NO.	LOCATION	MATERIAL DESCRIPTION	PHOTO NUMBER	ACCESSIBLE AREA?	FRIABILITY	ANALYTICAL RESULT	MATERIAL CONDITION	APPROX. QUANTITY	ACTION REQUIRED	DATE OF LAST INSPECTION (INCL. COMPANY NAME AND INITIALS)	DATE OF CONTROL ACTION &/OR REMOVAL
XRF	AR9005 – Basement level	Cream painted walls	4	Yes	-	Lead based paint (5.00 mg/cm <sup>2</sup> )	Good	Undefined	Maintain in good condition OR Remove in accordance with AS4361.2-2017	5/10/2021 JBS&G MS & AS	
XRF	AR9006 – Basement level	Cream painted walls	4	Yes	-	Lead based paint (consistent appearance with AR9005)	Good	Undefined	Maintain in good condition OR Remove in accordance with AS4361.2-2017	5/10/2021 JBS&G MS & AS	
XRF	AR9007 – Basement level	Cream painted walls	4	Yes	-	Lead based paint (consistent appearance with AR9005)	Good	Undefined	Maintain in good condition OR Remove in accordance with AS4361.2-2017	5/10/2021 JBS&G MS & AS	
XRF	AR9008 – Basement level	Cream painted walls	4	Yes	-	Lead based paint (consistent appearance with AR9005)	Good	Undefined	Maintain in good condition OR Remove in accordance with AS4361.2-2017	5/10/2021 JBS&G MS & AS	
XRF	AR9016 – Basement level	Cream painted walls	4	Yes	-	Lead based paint (consistent appearance with AR9005)	Good	Undefined	Maintain in good condition OR Remove in accordance with AS4361.2-2017	5/10/2021 JBS&G MS & AS	
A-L01	AR0016 – Ceiling space	Settled dust	-	No	-	Lead impacted dust (1,100 mg/kg)	Loose but contained	Undefined	Maintain in good condition OR Remove in accordance with AS4361.2-2017	5/10/2021 JBS&G MS & AS	
A-L03	AR0018 – Ground level	Cream painted walls	4	Yes	-	Lead based paint (0.15% w/w)	Good	Undefined	Maintain in good condition OR Remove in accordance with AS4361.2-2017	5/10/2021 JBS&G MS & AS	
A-L02	AR1007 – Ceiling space	Settled dust	-	No	-	Lead impacted dust (700 mg/kg)	Loose but contained	Undefined	Maintain in good condition OR Remove in accordance with AS4361.2-2017	5/10/2021 JBS&G MS & AS	
A-L04	AR1014	White painted walls	11	Yes	-	Lead based paint (1.8% w/w)	Fair, some peeling observed	Undefined	Maintain in good condition OR Remove in accordance with AS4361.2-2017	5/10/2021 JBS&G MS & AS	
<b>Polychlorinated Biphenyls (PCBs)</b>											
Detailed inspection of light fittings could not be undertaken due to active electricity supply. All older style light fittings should be assumed to contain PCBs.									Undertake detailed inspection following isolation of electricity supply, <u>OR</u> Handle in accordance with ANZECC 1997	5/10/2021 JBS&G MS & AS	

**Hazardous Materials Register (R04-Rev 0)**  
**Murwillumbah High School, 36 Riverview Street, Murwillumbah, NSW**  
**Building A**

*Date of Production – 15 March 2022*



JBS&G SAMPLE NO.	LOCATION	MATERIAL DESCRIPTION	PHOTO NUMBER	ACCESSIBLE AREA?	FRIABILITY	ANALYTICAL RESULT	MATERIAL CONDITION	APPROX. QUANTITY	ACTION REQUIRED	DATE OF LAST INSPECTION (INCL. COMPANY NAME AND INITIALS)	DATE OF CONTROL ACTION &/OR REMOVAL
<b>Synthetic Mineral Fibres (SMF)</b>											
No Synthetic Mineral Fibres were identified at the time of inspection									-	5/10/2021 JBS&G MS & AS	

**Hazardous Materials Register (R04-Rev 0)**  
**Murwillumbah High School, 36 Riverview Street, Murwillumbah, NSW**  
**Building E**

Date of Production – 15 March 2022



JBS&G SAMPLE NO.	LOCATION	MATERIAL DESCRIPTION	PHOTO NUMBER	ACCESSIBLE AREA?	FRIABILITY	ANALYTICAL RESULT	MATERIAL CONDITION	APPROX. QUANTITY	ACTION REQUIRED	DATE OF LAST INSPECTION (INCL. COMPANY NAME AND INITIALS)	DATE OF CONTROL ACTION &/OR REMOVAL
<b>Asbestos Containing Materials (ACM)</b>											
-	External – roof lining	Ventilation pipes (refer areas ER9001 and ER9002)	22	No	Non-friable	Assumed to contain asbestos	Good	2 units – western extent 1 unit – eastern extent	Maintain in good condition OR Remove prior to demolition in accordance with SWNSW 2019a	5/10/2021 JBS&G MS & AS	
-	External – roof lining to administration areas	Waterproofing membrane beneath pebblecrete finishing	23	No	Non-friable	Suspected to contain asbestos	Good	158m <sup>2</sup>	Maintain in good condition OR Remove prior to demolition in accordance with SWNSW 2019a	5/10/2021 JBS&G MS & AS	
E-01 (also refer to sample B-01, Building B (JBS&G 2022))	External – Ground level window mastic	Window mastic sealant	18	Yes	Non-friable	Assumed to contain asbestos (negative result returned but consistent with sample B-01, JBS&G 2021)	Good	Undefined	Maintain in good condition OR Remove prior to demolition in accordance with SWNSW 2019a	5/10/2021 JBS&G MS & AS	
E-02	External – window frames (assume to all levels)	Grey filler/putty to exterior of aluminium window frames	18	Yes	Non-friable	Chrysotile asbestos detected	Fair	Undefined	Maintain in good condition OR Remove prior to demolition in accordance with SWNSW 2019a	5/10/2021 JBS&G MS & AS	
As per sample E-10 & E-11	ER9001 – Basement level	Ventilation pipe with mastic materials to collar joints above hot water unit	17	No	Non-friable	Assumed to contain asbestos	Good	30 linear metres	Maintain in good condition OR Remove prior to demolition in accordance with SWNSW 2019a	5/10/2021 JBS&G MS & AS	
E-11 and as per sample E-10	ER9002 – Basement level	Ventilation pipe with mastic materials (E-11) to collar joints above hot water unit	17	No	Non-friable	Chrysotile asbestos detected	Good	30 linear metres	Maintain in good condition OR Remove prior to demolition in accordance with SWNSW 2019a	5/10/2021 JBS&G MS & AS	
E-03	ER1005 – First level	Vinyl sheeting compound flooring beneath carpet	-	-	-	No asbestos detected	-	-	-	5/10/2021 JBS&G MS & AS	
As per sample E-03	ER1006/ER1007 – First level	Vinyl sheeting compound flooring beneath carpet	-	-	-	No asbestos detected	-	-	-	5/10/2021 JBS&G MS & AS	
E-04	ER1006/ER1007 – First level	Flat sheet dividing wall	-	-	-	No asbestos detected	-	-	-	5/10/2021 JBS&G MS & AS	
E-05	ER1016 – First level	Beige vinyl floor tiles	-	-	-	No asbestos detected	-	-	-	5/10/2021 JBS&G MS & AS	
E-06	Unlabelled data cupboard off ER1024 – First level	Residual green vinyl floor tiles (with non-asbestos adhesive)	19	Yes	Non-friable	Chrysotile asbestos detected	Fair	1m <sup>2</sup>	Maintain in good condition OR Remove prior to demolition in accordance with SWNSW 2019a	5/10/2021 JBS&G MS & AS	

**Hazardous Materials Register (R04-Rev 0)**  
**Murwillumbah High School, 36 Riverview Street, Murwillumbah, NSW**  
**Building E**

Date of Production – 15 March 2022



JBS&G SAMPLE NO.	LOCATION	MATERIAL DESCRIPTION	PHOTO NUMBER	ACCESSIBLE AREA?	FRIABILITY	ANALYTICAL RESULT	MATERIAL CONDITION	APPROX. QUANTITY	ACTION REQUIRED	DATE OF LAST INSPECTION (INCL. COMPANY NAME AND INITIALS)	DATE OF CONTROL ACTION &/OR REMOVAL
As per sample E-06	ER1024 – First level	Green vinyl floor tiles (with non-asbestos adhesive) below carpet	-	No	Non-friable	<b>Assumed to contain asbestos</b>		60m <sup>2</sup>	Maintain in good condition OR Remove prior to demolition in accordance with SWNSW 2019a	5/10/2021 JBS&G MS & AS	
As per sample E-03	ER2001 – Second level	Vinyl sheeting compound flooring beneath carpet	-	-	-	No asbestos detected	-	-	-	5/10/2021 JBS&G MS & AS	
As per sample E-03	ER2002/2014 – Second level	Vinyl sheeting compound flooring beneath carpet	-	-	-	No asbestos detected	-	-	-	5/10/2021 JBS&G MS & AS	
As per sample E-03	ER2003/ER2004/ER2013 – Second level	Vinyl sheeting compound flooring beneath carpet	-	-	-	No asbestos detected	-	-	-	5/10/2021 JBS&G MS & AS	
As per sample E-03	ER2005 – Second level	Vinyl sheeting compound flooring beneath carpet	-	-	-	No asbestos detected	-	-	-	5/10/2021 JBS&G MS & AS	
As per sample E-03	ER2006/ER2007 – Second level	Vinyl sheeting compound flooring beneath carpet	-	-	-	No asbestos detected	-	-	-	5/10/2021 JBS&G MS & AS	
As per sample E-03	ER2008 – Second level	Vinyl sheeting compound flooring beneath carpet	-	-	-	No asbestos detected	-	-	-	5/10/2021 JBS&G MS & AS	
E-10	ER2009 – Second level	Ventilation pipe extending from ground to ceiling (assumed to extend from ER9002)	21	Yes	Non-friable	<b>Chrysotile asbestos detected</b>	Good	Refer to ER9002	Maintain in good condition OR Remove prior to demolition in accordance with SWNSW 2019a	5/10/2021 JBS&G MS & AS	
E-09	ER2009 – Second level	Mastic to ventilation pipe collar joins (assumed to extend from ER9002)	21	Yes	Non-friable	<b>Chrysotile asbestos detected</b>	Good	Refer to ER9002	Maintain in good condition OR Remove prior to demolition in accordance with SWNSW 2019a	5/10/2021 JBS&G MS & AS	
-	ER2011 – Second level	Black resinous electrical backing board	20	No	Non-friable	<b>Assumed to contain asbestos</b>	Good	2 units	Maintain in good condition OR Remove prior to demolition in accordance with SWNSW 2019a	5/10/2021 JBS&G MS & AS	
E-07	ER2011 – Second level	Flat sheet wall lining and internal door lining	20	No	Non-friable	<b>Chrysotile asbestos detected</b>	Good	10m <sup>2</sup>	Maintain in good condition OR Remove prior to demolition in accordance with SWNSW 2019a	5/10/2021 JBS&G MS & AS	
As per DoE 2020	ER2015 – Second level	Flat sheet ceiling lining	24	Yes	Non-friable	<b>Chrysotile asbestos detected</b>	Good	116m <sup>2</sup>	Maintain in good condition OR Remove prior to demolition in accordance with SWNSW 2019a	5/10/2021 JBS&G MS & AS	

**Hazardous Materials Register (R04-Rev 0)**  
**Murwillumbah High School, 36 Riverview Street, Murwillumbah, NSW**  
**Building E**

Date of Production – 15 March 2022



JBS&G SAMPLE NO.	LOCATION	MATERIAL DESCRIPTION	PHOTO NUMBER	ACCESSIBLE AREA?	FRIABILITY	ANALYTICAL RESULT	MATERIAL CONDITION	APPROX. QUANTITY	ACTION REQUIRED	DATE OF LAST INSPECTION (INCL. COMPANY NAME AND INITIALS)	DATE OF CONTROL ACTION &/OR REMOVAL
As per DoE 2020	ER2016 – Second level	Flat sheet ceiling lining	25	Yes	Non-friable	<b>Chrysotile asbestos detected</b>	Good	3m <sup>2</sup>	Maintain in good condition OR Remove prior to demolition in accordance with SWNSW 2019a	5/10/2021 JBS&G MS & AS	
As per DoE 2020	ER2017 – Second level	Flat sheet ceiling lining	27	Yes	Non-friable	<b>Chrysotile asbestos detected</b>	Good	13m <sup>2</sup>	Maintain in good condition OR Remove prior to demolition in accordance with SWNSW 2019a	5/10/2021 JBS&G MS & AS	
-	Eaves to northern extent of second level	Flat sheet lining	25 & 26	No	Non-friable	<b>Assumed to contain asbestos</b>	Good	90m <sup>2</sup>	Maintain in good condition OR Remove prior to demolition in accordance with SWNSW 2019a	5/10/2021 JBS&G MS & AS	
<b>Lead Based Paints/Lead Impacted Dust</b>											
No lead based paints identified at the time of inspection										5/10/2021 JBS&G MS & AS	
<b>Polychlorinated Biphenyls (PCBs)</b>											
Detailed inspection of light fittings could not be undertaken due to active electricity supply. All older style light fittings should be assumed to contain PCBs.									Undertake detailed inspection following isolation of electricity supply, OR Handle in accordance with ANZECC 1997	5/10/2021 JBS&G MS & AS	
<b>Synthetic Mineral Fibres (SMF)</b>											
-	ER9001 – Basement level	Hot water unit	17	No	-	Assumed to contain internal SMF insulation	Good	1 unit	Remove in accordance with NOHSC:2006 (1990)	5/10/2021 JBS&G MS & AS	
-	ER9002 – Basement level	Hot water unit	17	No	-	Assumed to contain internal SMF insulation	Good	1 unit	Remove in accordance with NOHSC:2006 (1990)	5/10/2021 JBS&G MS & AS	
-	ER2010 – Second level	Hot water unit	-	No	-	Assumed to contain internal SMF insulation	Good	1 unit	Remove in accordance with NOHSC:2006 (1990)	5/10/2021 JBS&G MS & AS	-

**Hazardous Materials Register (R04-Rev 0)**  
**Murwillumbah High School, 36 Riverview Street, Murwillumbah, NSW**  
**Building F**

Date of Production – 15 March 2022



JBS&G SAMPLE NO.	LOCATION	MATERIAL DESCRIPTION	PHOTO NUMBER	ACCESSIBLE AREA?	FRIABILITY	ANALYTICAL RESULT	MATERIAL CONDITION	APPROX. QUANTITY	ACTION REQUIRED	DATE OF LAST INSPECTION (INCL. COMPANY NAME AND INITIALS)	DATE OF CONTROL ACTION &/OR REMOVAL
<b>Asbestos Containing Materials (ACM)</b>											
No asbestos containing materials identified at the time of inspection										5/10/2021 JBS&G MS & AS	
<b>Lead Based Paints/Lead Impacted Dust</b>											
No lead based paints or dusts identified at the time of inspection										5/10/2021 JBS&G MS & AS	
<b>Polychlorinated Biphenyls (PCBs)</b>											
No suspected PCB containing light fittings identified at the time of inspection										5/10/2021 JBS&G MS & AS	
<b>Synthetic Mineral Fibres (SMF)</b>											
-	FR0001/FR0002/ FR0003/FR0004	Aluminium sarking to ceiling linings	29	No	-	Assumed to contain internal SMF insulation	Good	320m <sup>2</sup>	Remove in accordance with NOHSC:2006 (1990)		
-	FR0001 & FR0002/FR0003	Dividing wall	30	No	-	Assumed to contain internal SMF insulation	Good	150m <sup>2</sup>	Remove in accordance with NOHSC:2006 (1990)		

**Hazardous Materials Register (Rev B)**  
**Murwillumbah High School, 36 Riverview Street, Murwillumbah, NSW**  
**Building AW**

Date of Production – 13 January 2022



JBS&G SAMPLE NO.	LOCATION	MATERIAL DESCRIPTION	PHOTO NUMBER	ACCESSIBLE AREA?	FRIABILITY	ANALYTICAL RESULT	MATERIAL CONDITION	APPROX. QUANTITY	ACTION REQUIRED	DATE OF LAST INSPECTION (INCL. COMPANY NAME AND INITIALS)	DATE OF CONTROL ACTION &/OR REMOVAL
<b>Asbestos Containing Materials (ACM)</b>											
AY-01	External – NW portion walls	White weatherboard cladding	31-32	Yes	Non-friable	Chrysotile asbestos detected	Good	15m <sup>2</sup>	Maintain in good condition OR Remove prior to demolition in accordance with SWNSW 2019a	5/10/2021 JBS&G MS & AS	
As per DoE 2020-	AYR0001	Flat sheet ceiling lining	33	Yes	Non-friable	Assumed to contain asbestos	Good	17m <sup>2</sup>	Remove in accordance with SWNSW 2019a	5/10/2021 JBS&G MS & AS	
As per DoE 2020	AWR0004	Flat sheet wall linings	34	Yes	Non-friable	Assumed to contain asbestos	Good	10m <sup>2</sup>	Maintain in good condition OR Remove prior to demolition in accordance with SWNSW 2019a	5/10/2021 JBS&G MS & AS	
<b>Lead Based Paints/Lead Impacted Dust</b>											
No lead based paints or lead impacted dusts were identified at the time of inspection										5/10/2021 JBS&G MS & AS	
<b>Polychlorinated Biphenyls (PCBs)</b>											
Detailed inspection of light fittings could not be undertaken due to active electricity supply. All older style light fittings should be assumed to contain PCBs.									Undertake detailed inspection following isolation of electricity supply, OR Handle in accordance with ANZECC 1997	5/10/2021 JBS&G MS & AS	
<b>Synthetic Mineral Fibres (SMF)</b>											
-	AYR0002	Internal insulation to hot water unit	-	Yes	Non-friable	Assumed to contain SMF	Good	1 unit	Remove in accordance with NOHSC:2006 (1990)	5/10/2021 JBS&G MS & AS	
-	AYR0003	Insulation materials within aluminium sarking to ceiling lining	-	No	Non-friable	Assumed to contain SMF	Good	1 unit	Remove in accordance with NOHSC:2006 (1990)	5/10/2021 JBS&G MS & AS	

## Appendix B Building Layouts

***This Appendix has been removed from this report at the request of the client***

## Appendix C Photographs



Photo 1: Building A Overview



Photo 2: Building A - Lead based green and yellow timber window frames



Photo 3: Building A – Asbestos flat sheet eaves to all levels and faces



Photo 4: Building A - Example of cream lead based painted walls to Building A Basement level (AR9007 shown)

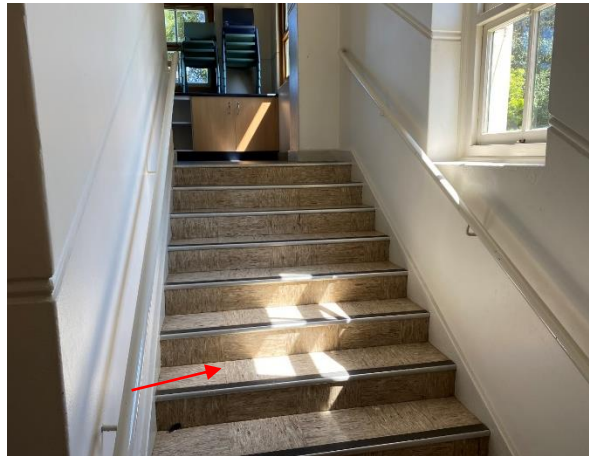


Photo 5: Building A - Asbestos containing 12" vinyl floor tiles to stairs and movement areas throughout



Photo 6: Building A - Asbestos containing vinyl floor tiles with non asbestos (black) adhesive found throughout Building A beneath carpeted floors

© JBS&G

Source:			
0	Original Issue -	MS	15/03/2022
Rev	Description	Drn.	Date



Appendix C: Photographs

Client: Built Pty Ltd

Project: SSD MEC - Murwillumbah High School HBMS

Job No: 60882

File Name: R04 Rev 0 App C-Photo Log



Photo 7: Building A - Asbestos containing vinyl floor tiles with non asbestos (black) adhesive found throughout Building A beneath carpeted floors



Photo 8: Building A - Non-asbestos fibre board lining beneath vinyl floor sheet and fibre board to AR0019



Photo 9: Building A - Asbestos fibre board to top of cross ventilation points along southern hallway (AR1014) to second level of Building A.



Photo 10: Building A - Asbestos vinyl floor tiles to AR1005



Photo 11: Building A - Lead based white painted walls to AR1014



Photo 12: Building A - Non-asbestos render material to internal surface of fireplace flue to Second level of Building A

© JBS&G

Source:			
0	Original Issue -	MS	15/03/2022
Rev	Description	Drn.	Date



Appendix C: Photographs

Client: Built Pty Ltd

Project: SSD MEC - Murwillumbah High School HBMS

Job No: 60882

File Name: R04 Rev 0 App C-Photo Log



Photo 13: Building A - Assumed ACM access hatch to ceiling space from AR1007



Photo 14: Building A - Non-asbestos bituminous cable sheathing to Building A sub floor



Photo 15: Building A - Loose ACM debris to Building A sub floor



Photo 16: Building E overview

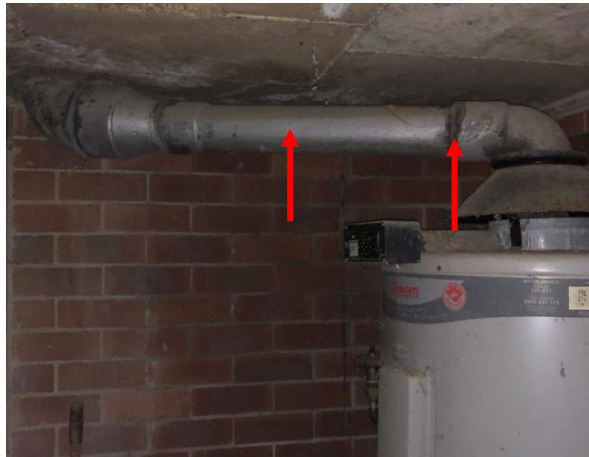


Photo 17: Building E - Asbestos ventilation pipe with asbestos mastic to collar joints extending from hot water unit in sub floor areas to roof lining. One unit observed to each of ER9001 and ER9002



Photo 18: Building E - Asbestos grey putty/filler to top seal of aluminium windows (red) and window mastic with no asbestos detected but consistent with Building B (JBS&G 2021) which reported asbestos present (orange).

© JBS&G

Source:			
0	Original Issue -	MS	15/03/2022
Rev	Description	Drn.	Date



Appendix C: Photographs

Client: Built Pty Ltd

Project: SSD MEC - Murwillumbah High School HBMS

Job No: 60882

File Name: R04 Rev 0 App C-Photo Log

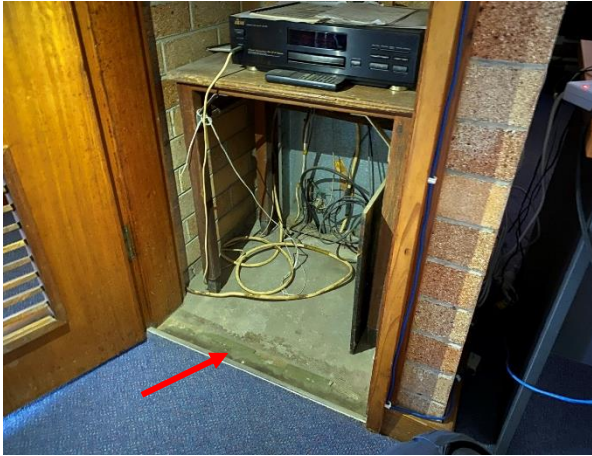


Photo 19: Residual asbestos green vinyl floor tiles to unlabelled data cupboard area (ER1024)



Photo 20: Building E – Asbestos flat sheet internal door linings and asbestos resinous backing board to ER2011

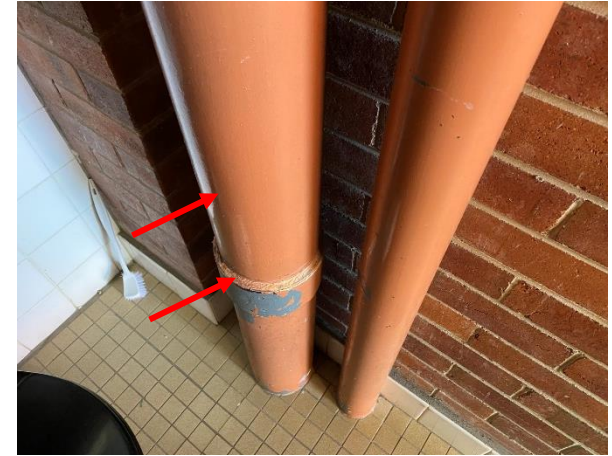


Photo 21: Building E – Asbestos ventilation pipe with asbestos mastic seals to collar joint extending from basement level through ER2009



Photo 22: Building E – Asbestos ventilation pipes from basement level (red arrows) and additional suspected asbestos pipe (orange) to roof lining



Photo 23: Building E – Suspected asbestos containing waterproofing membrane to pebblecrete roof lining above administration portion. No access available.



Photo 24: Building E – Asbestos containing flat sheet ceiling lining to ER2015

© JBS&G

Source:			
0	Original Issue -	MS	15/03/2022
Rev	Description	Drn.	Date



Appendix C: Photographs

Client: Built Pty Ltd

Project: SSD MEC - Murwillumbah High School HBMS

Job No: 60882

File Name: R04 Rev 0 App C-Photo Log



Photo 25: Building E – Asbestos containing flat sheet ceiling lining to ER2017 (red) and assumed asbestos containing flat sheet eave linings to northern extent of second level (orange)



Photo 26: Assumed asbestos containing flat sheet eave linings to northern extent of second level



Photo 27: Asbestos containing flat sheet ceiling lining to ER201



Photo 28: Building F overview

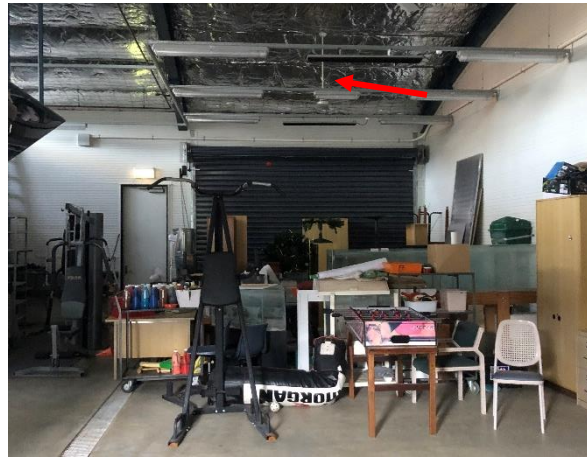


Photo 29: Building F – Suspected SMF insulation to aluminium sarking over ceiling lining



Photo 30: Building F – Suspected SMF internal insulation to dividing wall

© JBS&G

Source:			
0	Original Issue -	MS	15/03/2022
Rev	Description	Drn.	Date



Appendix C: Photographs

Client: Built Pty Ltd

Project: SSD MEC - Murwillumbah High School HBMS

Job No: 60882

File Name: R04 Rev 0 App C-Photo Log



Photo 31: Building AY overview



Photo 32: Building AY – Asbestos white weatherboard cladding to NW exterior



Photo 33: Building AY – Asbestos flat sheet ceiling lining to AYR0001



Photo 34: Building AY – Asbestos flat sheet wall linings to AYR0004

© JBS&G

Source:			
0	Original Issue -	MS	15/03/2022
Rev	Description	Drn.	Date



Appendix C: Photographs

Client: Built Pty Ltd

Project: SSD MEC - Murwillumbah High School HBMS

Job No: 60882

File Name: R04 Rev 0 App C-Photo Log

## Appendix D Laboratory Analysis Reports and Chain of Custody Documentation

*This Appendix has been removed from this report at the request of the client.*

© JBS&G

This document is and shall remain the property of JBS&G. The document may only be used for the purposes for which it was commissioned and in accordance with the Terms of Engagement for the commission. Unauthorised use of this document in any form whatsoever is prohibited.

**Document Distribution**

Rev No.	Copies	Recipient	Date
0	1 x Electronic	Alec Christofides <a href="mailto:alecchristofides@built.com.au">alecchristofides@built.com.au</a>	16/03/2022

**Document Status**

Rev No.	Author	Reviewer	Approved for Issue		
		Name	Name	Signature	Date
0	Michael Samuel	Matthew Parkinson	Matthew Parkinson		16/03/2022

