



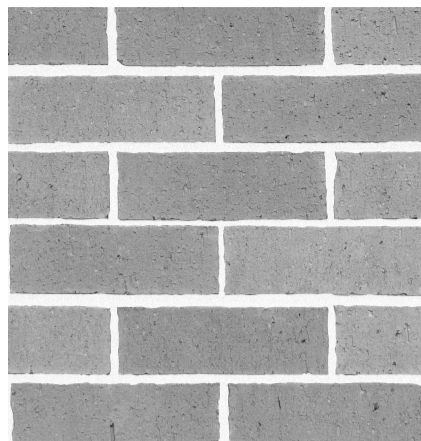
BAL 1 SEMI FRAMLESS
FULL HEIGHT CLEAR
GLASS BALUSTRADE



BAL 2 VERTICAL 10X 100 STEEL
POWDER COAT FINISH TO
MATCH PCF1



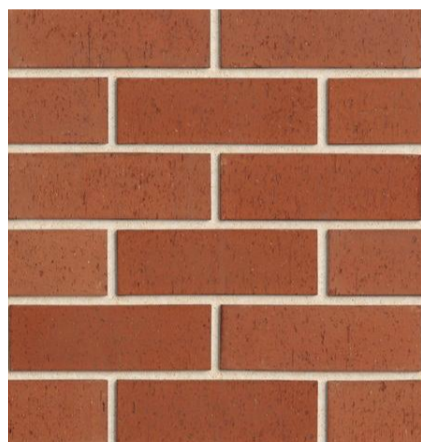
BAL 3 VERTICAL 10X 100 STEEL
POWDER COAT FINISH TO
MATCH PCF2



BW1 / BW2 PGH DARK AND
STORMY GREY BRICK



BW3 / BW4 BOWRAL BLUE



BW5 / BW6 PGH BRICKS
VELOUR TERRACOTTA



BW7 BOWAL
SEMMENTAL SILVER



BW8 AB BRICKS URBAN
ONE LATTE



BW9 FEATURE BRICK
PYROLAVE GREEN GLAZED
BRICK * OREGON *



COF1 OFF FORM CONCRETE
NATURAL FINISH



COF2 SMOOTH FINISH
OFF FORM CONCRETE
DARK GREY



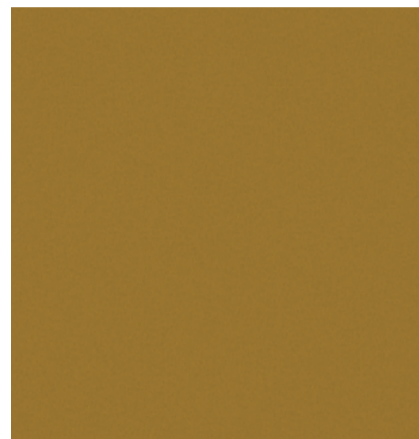
CPC1 SMOOTH FINISH
CONCRETE PRECAST WHITE



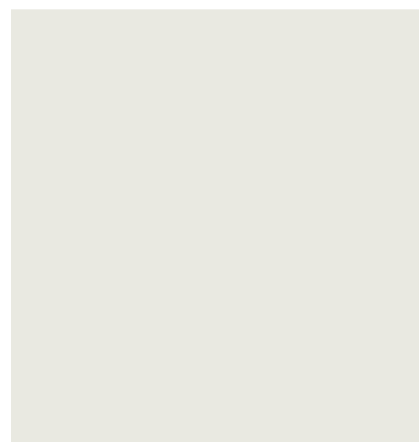
CPC2 DECORATIVE FLUTED
CONCRETE PRECAST



PCF1 POWDER COAT
FINISH DULUX DOMINO



PCF2 POWDER COAT FINISH TO
DULUX ETERNITY GOLD PEARL



PCF3 POWDER COAT FINISH
DULUX NATURAL WHITE



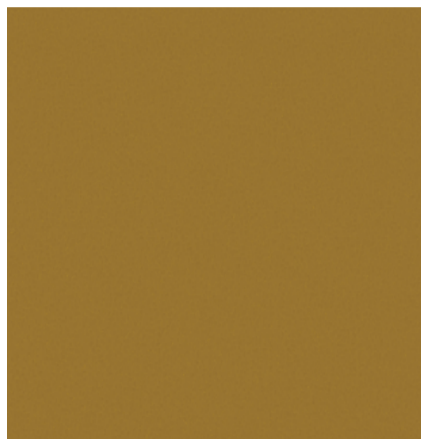
PCF4 POWDER COAT DULUX
ETERNITY PEWTER PEARL



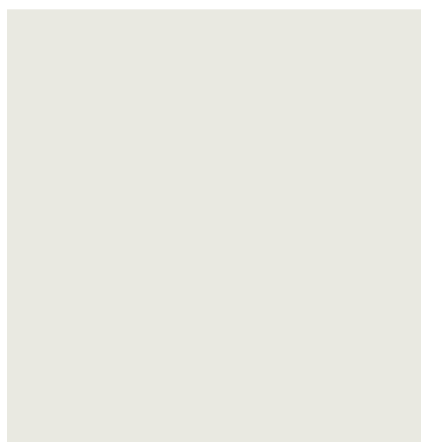
CPC3 SMOOTH FINISH
PRECAST GREY



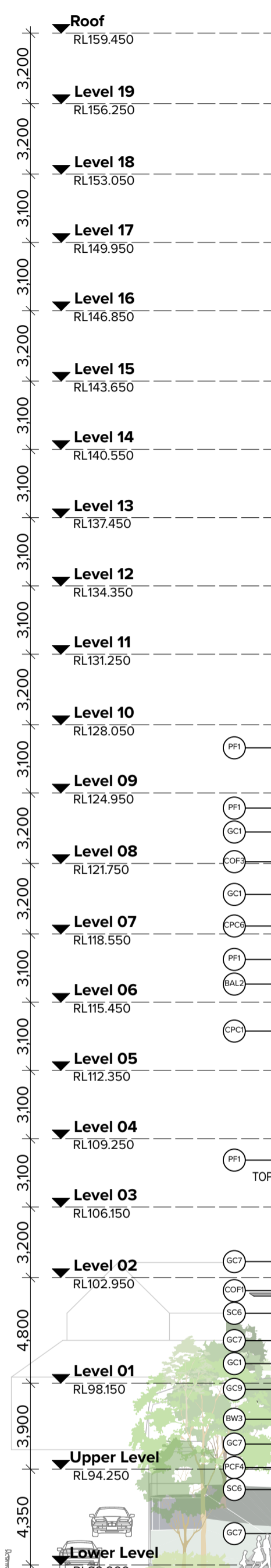
PF1 PAINT FINISH
DULUX DOMINO



PF2 PAINT FINISH
DULUX ETERNITY GOLD PEARL



PF3 PAINT FINISH DULUX
NATURAL WHITE



Legend:

- | | | | | | | | | | | |
|--|--|---|---|---|--|---|--|--|--|---|
| (BAL1) Semi-framless full height clear glass balustrade system with 150mm wide top rail. Framing System, aluminium powder coat finish. Colour to match PCF1 | (BW1) Brick Work Type 1: Light Grey Brick, Pgh Bricks "Dark-end-stormy, lightning" or Similar Stretcher Bond | (BW6) Brick Work Type 5: Pink Brick, Austral Bricks "Allure Capri White" or Similar, Soldier Bond | (COF1) Off form Concrete with natural finish. Penetrating Clear matt sealer over | (CPC3) Smooth finish concrete precast Wall Element, Dark Grey finish | (PCF1) Powder coat Finish: Colour to match Dulux "Domino" or Similar | (SC1) Vertical steel screen, Detailing material and finish to match BAL2 | (GC1) Glass clear, Framing System, aluminium. Powder coat finish, Framing colour to match PCF1 | (GC7) Colour-back glass panel Framing System, aluminium. Powder coat finish, Framing colour to match PCF1 | (PF3) Paint finish White Colour to match Dulux "Dulux Natural White" or Similar | (SG5) Mail/Car park directional Signage |
| (BAL2) Vertical 10 x 100 Steel Balustrade. Powder coat finish, colour and finish to match PCF1 | (BW2) Brick Work Type 2: Light Grey Brick, Pgh Bricks "Dark-end-stormy, lightning" or Similar Monk Bond Protruding Bricks | (BW7) Brick Work Type 6: Light Orange, Austral Bricks "Stimmental Silver" or Similar, Stretcher Bond | (COF2) Off form Concrete with white finish. Penetrating Clear matt sealer over | (CPC4) Smooth finish concrete precast Wall Element, Natural finish | (PCF2) Powder coat Finish: Colour to match Dulux "Eternity Gold Pearl" or Similar | (SC2) Horizontal Aluminium Louver screen, finish to match PCF1 | (GC2) Glass clear Louvers, Framing System, aluminium. Powder coat finish, Framing colour to match PCF2 | (GC8) Glass clear Louvers, Framing System, aluminium. Powder coat finish, Framing colour to match PCF1 | (SG1) External Sign - The corner of Doran Drive and Mandala Parade | (SG6) Car park Entry/Exit Signage |
| | (BW3) Brick Work Type 2: Red-brown Brick, Austral Bricks "Bowral Blue" or Similar, Stretcher Bond | (BW8) Brick Work Type 7: Light Orange, Austral Bricks "Stimmental Silver" or Similar, Stretcher Bond | (COF3) Off form Concrete with white finish. Penetrating Clear matt sealer over | (CPC5) Smooth finish concrete precast Wall Element, Charcoal finish | (PCF3) Powder coat Finish: Colour to match Dulux "Dulux Natural White" or Similar | (SC3) Horizontal Aluminium Louver screen, finish to match PCF2 | (GC3) Glass clear, Framing System, aluminium. Powder coat finish, Framing colour to match PCF4 | (GC9) Glass clear Curtain Wall System | (SG2) External Sign - The corner of Doran Drive and De Crambe Drive | (SG7) External Sign - Online Pick Up Signage |
| | (BW4) Brick Work Type 3: Red-brown Brick, Austral Bricks "Bowral Blue" or Similar, Soldier Bond | (BW9) Brick Work Type 9: Red-brown Brick, Austral Bricks "Bowral Blue" or Similar, Soldier Bond | (CPC1) Smooth Finish Concrete precast wall element. Pigmented white | (CPC6) Decorative profile finish concrete precast element, pigmented white | (PCF4) Powder coat finish: Colour to match Dulux "Dulux Eternity Pewter Pearl" or Similar | (SC4) Vertical Aluminium Louver screen, finish to match PCF2 | (GC4) Colour-back glass panel Framing System, aluminium. Powder coat finish, Framing colour to match PCF1 | (PF1) Paint finish Dark grey Colour to match Dulux "Domino" or Similar | (SG3) External Sign - The corner of Andalusian Way and De Crambe Drive | |
| | (BW5) Brick Work Type 4: Pink Brick, Austral Bricks "Allure Capri White" or Similar, Stretcher Bond | | (CPC2) Decorative profile finish concrete precast element, finish to match COF1 | (CLD1) Profile Metal Cladding colour to match PCF2 | | (SC5) Horizontal Aluminium Louver screen, finish to match PCF4 | (GC5) Colour-back glass panel Framing System, aluminium. Powder coat finish, Framing colour to match PCF1 | (PF2) Paint Finish: Colour to match Dulux "Eternity Gold Pearl" or Similar | | |
| | | | | | | | (GC6) Colour-back glass panel Framing System, aluminium. Powder coat finish, Framing colour to match PCF1 | | | |

NOTES
THIS DRAWING IS COPYRIGHT © OF TURNER. NO REPRODUCTION WITHOUT PERMISSION. UNLESS NOTED OTHERWISE THIS DRAWING IS NOT FOR CONSTRUCTION. ALL DIMENSIONS AND LEVELS ARE TO BE CHECKED ON SITE PRIOR TO THE COMMENCEMENT OF WORK. BEFORE TURNER OF ANY DISCREPANCIES FOR CLARIFICATION BEFORE PROCEEDING WITH WORK. DRAWINGS ARE NOT TO BE SCALED. USE ONLY FIGURED DIMENSIONS. REFER TO CONSULTANT DOCUMENTATION FOR FURTHER INFORMATION (DWG, P&C AND BIMA FILES AND UNCONTROLLED DOCUMENTS ARE NOT SUITABLE FOR INFORMATION ONLY)

CLIENT
Deicorp

Rev 01 Date 07.06.21 Approved by JMC
02 06.07.21

Revision Notes
Dist DA for Review
DA Submission

Project Title
Doran Drive
Doran Drive, Castle Hill Castle Hill NSW 2154 Australia

Scale
1:200 @A1, 50% @A3

Project No.
19068

Drawn by
JH

North

Drawing Title
MATERIALS & FINISHES BOARD
Material and Finishes Sample Board

Dwg No.
DA-890-001

Rev
02

TURNER

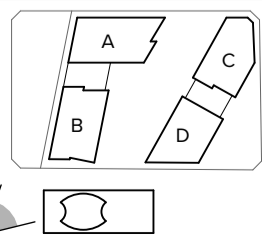
Level 7 ONE Oxford Street
Sydney NSW 2010
AUSTRALIA

T +61 2 8668 0000
F +61 2 8668 0088
turner@turner.com.au



NOTES
THIS DRAWING IS COPYRIGHT © OF TURNER. NO REPRODUCTION WITHOUT PERMISSION. UNLESS NOTED OTHERWISE THIS DRAWING IS NOT FOR CONSTRUCTION. ALL DIMENSIONS AND LEVELS ARE TO BE CHECKED ON SITE PRIOR TO THE COMMENCEMENT OF WORK. INFORM TURNER OF ANY DISCREPANCIES FOR CLARIFICATION BEFORE PROCEEDING WITH WORK. DRAWINGS ARE NOT TO BE SCALED. USE ONLY FIGURED DIMENSIONS. REFER TO CONSULTANT DOCUMENTATION FOR FURTHER INFORMATION (DWG, PC AND BIM) FILES ARE UNCONTROLLED DOCUMENTS AND ARE ISSUED FOR INFORMATION ONLY.

CLIENT
Deicorp



Rev	Date	Approved by	Revision Notes
01	06.07.21	JMC	DA Submission

Project Title
Doran Drive
Doran Drive, Castle Hill Castle Hill NSW 2154 Australia

Drawing Title
3D VIEWS
Perspective - View from Metro Station

Scale	Project No.	Drawn by	North
@A1, 50% @A3	19068	AM	
Status	Dwg No.	Rev	
DA Submission	DA-910-101	01	

TURNER

Level 7 ONE Oxford Street
Sydney NSW 2010
AUSTRALIA

T +61 2 8668 0000
F +61 2 8668 0068
turner@tda.com.au