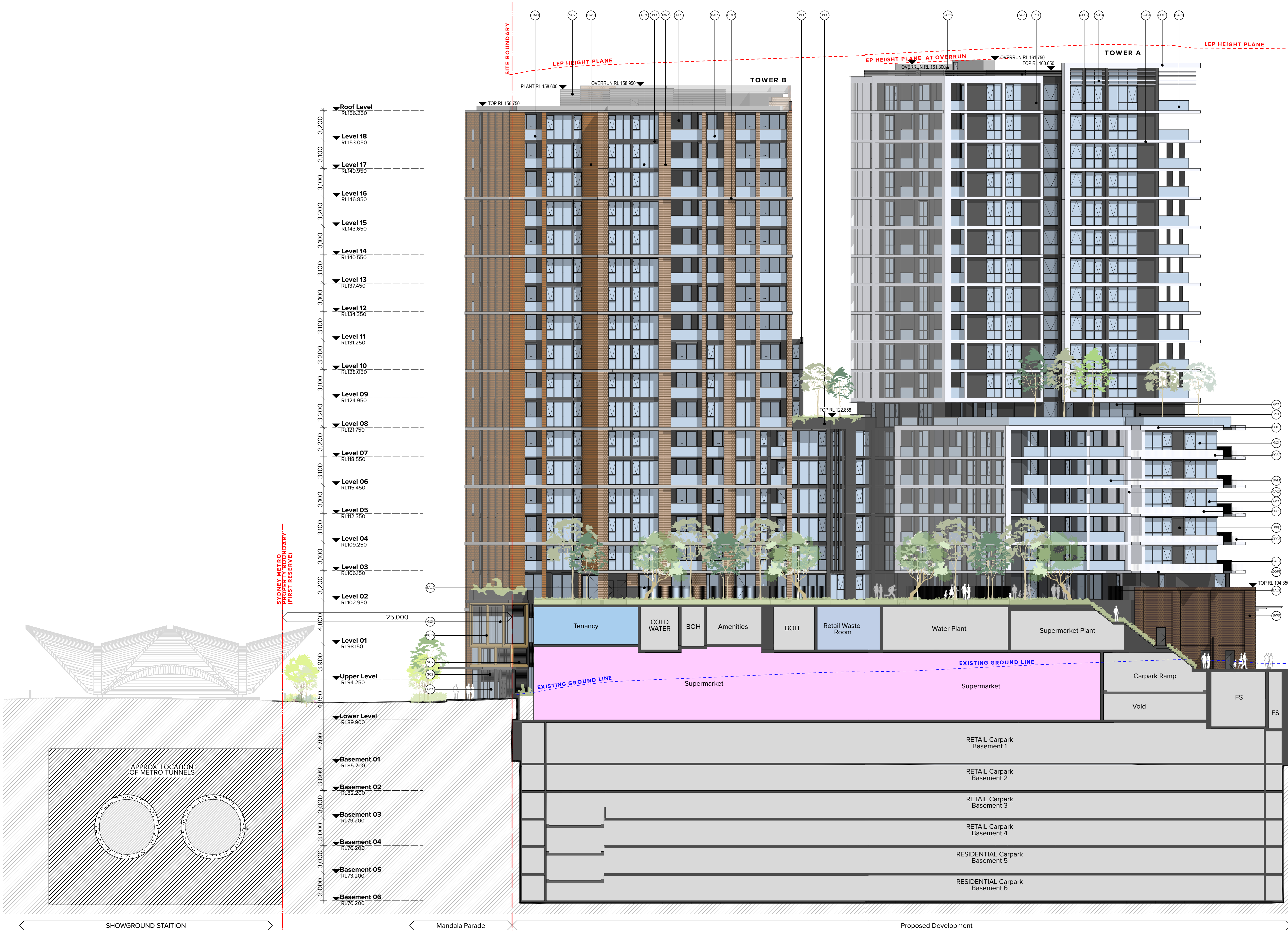


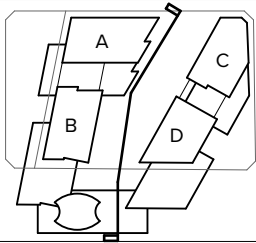
Legend:

- (BAL) Semi-frameless full height clear glass balustrade system with 150mm wide top rail. Framing System, aluminium powder coat finish. Colour to match PCF1
- (BAL2) Vertical 10 x 100 Steel Balustrade. Powder coat finish, colour and finish to match PCF1
- (BW1) Brick Work Type 1
Light Gray Brick, Pgh Bricks
"Dark-and-stormy, lightning" or Similar
Stretcher Bond
- (BW2) Brick Work Type 2
Light Gray Brick, Pgh Bricks
"Dark-and-stormy, lightning" or Similar
Monk Bond Protruding Bricks
- (BW3) Brick Work Type 2
Red-blue Brick, Austral Bricks
"Bowral Blue" or Similar, Stretcher Bond
- (BW4) Brick Work Type 3
Red-blue Brick, Austral Bricks
"Bowral Blue" or Similar, Soldier Bond
- (BW5) Brick Work Type 4
Pink Brick, Austral Bricks
"Allure Capti White" or Similar, Stretcher Bond
- (BW6) Brick Work Type 5
Pink Brick, Austral Bricks
"Allure Capti White" or Similar, Soldier Bond
- (BW7) Brick Work Type 6
Light Orange, Austral Bricks
"Summertime Silver" or Similar, Stretcher Bond
- (BW8) Brick Work Type 7
Orange Brick, Austral Bricks
"Summertime Silver" or Similar, Stretcher Bond
- (BW9) Brick Work Type 9
Green Glazed Brick, Penelope
"Oregon" or Similar, Stretcher Bond
- (COF) Off form Concrete with natural finish. Penetrating Clear matt sealer over
- (COF2) Off form Concrete with Charcoal finish. Penetrating Clear matt sealer over
- (COF3) Off form Concrete with White finish. Penetrating Clear matt sealer over
- (CPC1) Smooth Finish Concrete precast wall element. Pigmented white
- (CPC2) Decorative profile finish concrete precast wall element. Finish to match COF1
- (CPC3) Smooth finish concrete precast Wall Element. Dark Gray finish
- (CPC4) Smooth finish concrete precast Wall Element. Natural finish
- (CPC5) Smooth finish concrete precast Wall Element. Charcoal finish
- (CPC6) Decorative profile finish concrete precast wall element. Pigmented white
- (CLD1) Profile Metal Cladding colour to match PCF2
- (PCF1) Powder coat Finish. Colour to match Dulux "Domino" or Similar
- (PCF2) Powder coat Finish. Colour to match Dulux "Eternity Gold Pearl" or Similar
- (PCF3) Powder coat finish. Colour to match Dulux "Dulux Natural White" or Similar
- (PCF4) Powder coat finish. Colour to match Dulux "Dulux Eternity Pewter Pearl" or Similar
- (SC1) Vertical steel screen. Detailing, material and finish to match BAL2
- (SC2) Horizontal Aluminium Louver screen. Finish to match PCF1
- (SC3) Horizontal Aluminium Louver screen. Finish to match PCF2
- (SC4) Vertical Aluminium Batten screen. Finish to match PCF2
- (SC5) Horizontal Aluminium Louver screen. Finish to match PCF4
- (GC1) Glass clear, Framing System, aluminium. Powder coat finish. Framing colour to match PCF1
- (GC2) Glass clear, Framing System, aluminium. Powder coat finish. Framing colour to match PCF2. Colour back panel to match PF1
- (GC3) Glass clear, Framing System, aluminium. Powder coat finish. Framing colour to match PCF4
- (GC4) Colour back glass panel Framing System, aluminium. Powder coat finish. Framing colour to match PCF2. Colour back panel to match PF1
- (GC5) Colour back glass panel Framing System, aluminium. Powder coat finish. Framing colour to match PCF1. Colour back panel to match PF2
- (GC6) Colour back glass panel Framing System, aluminium. Powder coat finish. Framing colour to match PCF1. Colour back panel to match PF3
- (GC7) Colour back glass panel Framing System, aluminium. Powder coat finish. Framing colour to match PCF1. Colour back panel to match PF1
- (GC8) Glass clear Louvers, Framing System, aluminium. Powder coat finish. Framing colour to match PCF1
- (GC9) Glass clear Curtain Wall System
- (PF1) Paint finish Dark gray Colour to match Dulux "Domino" or Similar
- (PF2) Paint Finish. Colour to match Dulux "Eternity Gold Pearl" or Similar
- (PF3) Paint finish White Colour to match Dulux "Dulux Natural White" or Similar



NOTES
THIS DRAWING IS COPYRIGHT © OF TURNER. NO REPRODUCTION WITHOUT PERMISSION. UNLESS NOTED OTHERWISE THIS DRAWING IS NOT FOR CONSTRUCTION. ALL DIMENSIONS AND LEVELS ARE TO BE CHECKED ON SITE PRIOR TO THE COMMENCEMENT OF WORK. IN THE EVENT OF ANY DISCREPANCIES FOR CLARIFICATION BEFORE PROCEEDING WITH WORK, DRAWINGS ARE NOT TO BE SCALED. USE ONLY FIGURED DIMENSIONS. REFER TO CONSULTANT DOCUMENTATION FOR FURTHER INFORMATION (DWG, P&C AND BIM FILES AND UNCONTROLLED DOCUMENTS ARE NOT TO BE USED FOR INFORMATION ONLY)

CLIENT
Deicorp



Rev 01 Date 06.07.21 Approved by JMC Revision Notes DA Submission

Project Title
Doran Drive
Doran Drive, Castle Hill NSW 2154 Australia

Drawing Title
GA SECTIONS
Relationship to Metro Section

Scale
1:200 @A1, 50% @A3

DA Submission

Project No. **19068**

Dwg No. **DA-310-501**

Rev **01**

TURNER

Level 7 ONE Oxford Street
Sydney NSW 2010
AUSTRALIA

T +61 2 8688 0000
F +61 2 8688 0088
turner@turner.com.au