

VARGA TRAFFIC PLANNING Pty Ltd  
 ABN 88 071 782 537  
 Suite 6, Level 1  
 20 Young Street  
 Neutral Bay, NSW 2089  
 www.vargatraffic.com.au  
 Sydney, Australia

PROJECT  
 MIXED USE DEVELOPMENT



DRAWING TITLE  
 12.5M HRV TRUCK TURNING PATHS  
 Entering Dedicated Loading Dock  
 ADDRESS  
 Doran Drive, Castle Hill

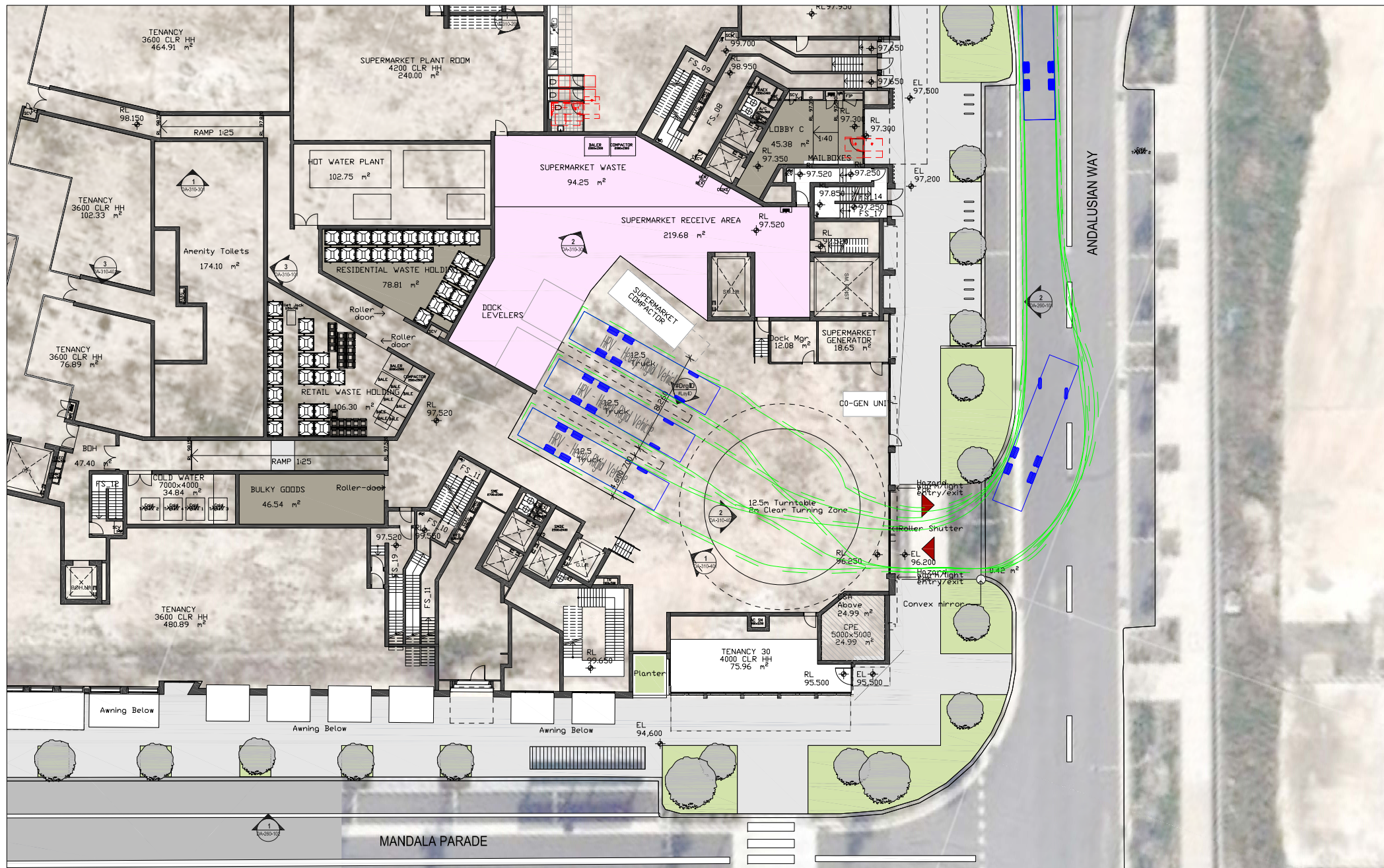
PROJECT NO.  
 20417  
 REVIEWED  
 CHRIS PALMER

1:400 @ A4

DATE DRAWN  
 2021-6-30  
 PREPARED  
 DONALD LEE

VARGA TRAFFIC PLANNING Pty Ltd  
 Transport, Traffic and Parking Consultants





VARGA TRAFFIC PLANNING Pty Ltd  
 ABN 88 071 762 537  
 Suite 6, Level 1  
 20 Young Street  
 Neutral Bay, NSW 2089  
 www.vargatraffic.com.au  
 Sydney, Australia

PROJECT  
 MIXED USE DEVELOPMENT



DRAWING TITLE  
 12.5M HRV TRUCK TURNING PATHS  
 Exiting Dedicated Loading Dock  
 ADDRESS  
 Doran Drive, Castle Hill

PROJECT NO.  
 20417  
 REVIEWED  
 CHRIS PALMER

1:400 @ A4

DATE DRAWN  
 2021-6-30  
 PREPARED  
 DONALD LEE

**VARGA TRAFFIC PLANNING** Pty Ltd  
 Transport, Traffic and Parking Consultants



## **APPENDIX C**

### **EXAMPLE TURNTABLE SPECIFICATION**



# LOADING DOCK TRUCK TURNTABLES



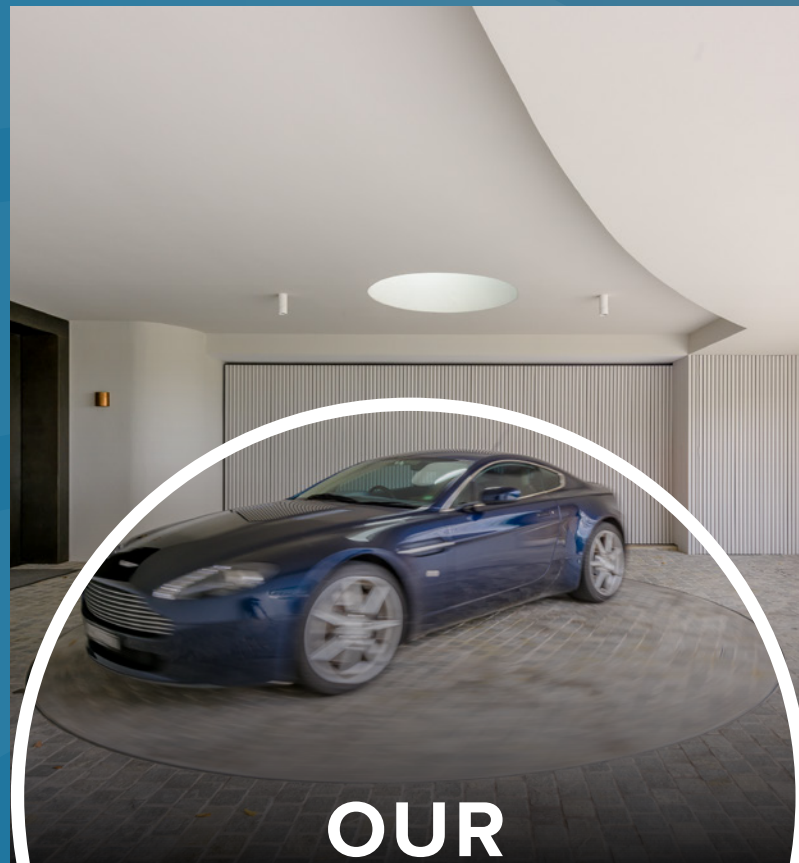


Company Profile .....	03
Optimise Space .....	05
Flexibility In design .....	06
Increase Efficiency .....	07
Increase Profits .....	08
Why Australian Turntables? .....	09
A Company & Product you can trust .....	10
Case Study .....	11
Coles Testimonial .....	13
Design a better loading dock .....	14
Loading Dock Specifications .....	15
Quality & Warranty .....	16
Our Customers .....	18
Contact us .....	19

# TABLE OF CONTENTS



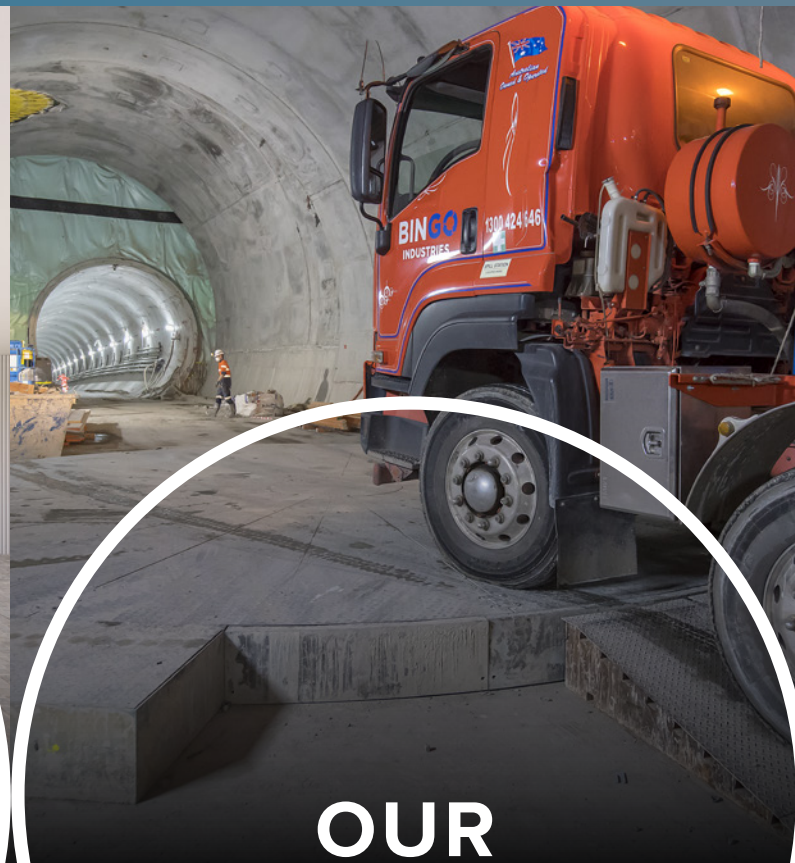




## OUR COMPANY

Australian Turntables is a world recognised company specialising in rotational movement systems.

We provide turntables to a wide range of industries, supporting our clients from the initial concept of a project through to completion and beyond.



## OUR HISTORY

Established in 1987, our products are all proudly designed and manufactured in our Australian based factory.

We can supply any project, for any industry, anywhere.



## OUR VALUES

We understand that the quality of your supply chain impacts the success of your project.

By choosing Australian Turntables, you have the support of a company driven by the following values: Embrace a challenge, fully commit, think smarter, keep it clean and own it.



## OUR LOCATIONS

Through our global distribution network we have delivered projects into 22 countries, for the worlds best companies.

We have the experience & knowledge to work across a range of industries in all parts of the world.





## OUR FOCUS

### Is Our Customers' Needs

- Improve safety
- Increase productivity
- Save space

With smart design and planning you can achieve a great return on investment for your project. Our team work with you to design the space for the best results.



## OUR INDUSTRIES

- Residential
- Showrooms
- Construction
- Revolving Restaurant / Rooms
- Mining
- Tunnelling
- Cement Plants
- Warehouse / Loading Docks
- Materials Handling
- Photo Booth
- Emergency Services
- Custom Projects



## OUR CLIENTS SAY

### Michael Cartisano - Senior Site Manager - Lendlease

"I have now worked with Australian Turntables for over 3 years and I can say with confidence that the products that I have been supplied, installed and maintained have been of a superior standard."



## OUR QUALITY

Our products are built with the highest quality and design principles, that gives you a solution that is built to last.

We are accredited with the Australian and international standards:  
AS 4024  
ISO 9001: 2015  
ISO 14001:2015  
ISO 45001:2018



**OPTIMISE  
SPACE**

**REDUCE SPACE REQUIRED FOR TRUCK MOVEMENTS**

**MORE ROOM FOR YOU TO WORK**

**SIMPLIFY TRAFFIC PATH DESIGN**

[turntables.com.au](http://turntables.com.au)





**FLEXIBILITY  
IN DESIGN**

**CREATE MORE DESIGN OPTIONS**

**INSTALL INTO SUSPENDED SLABS WITH 250MM SETDOWN**

**POSITION TRUCKS ANYWHERE**

[turntables.com.au](http://turntables.com.au)



**INCREASE  
EFFICIENCY**



**SIMPLIFY MOVEMENTS FOR END USER  
LOAD AND UNLOAD MORE EFFECTIVELY  
ELIMINATE DIFFICULT MANEUVERS**



A white StarTrack Express delivery truck is shown in motion, blurred to indicate speed, as it rotates on a large circular turntable. The truck has "STARTRACK EXPRESS" and "Call 13 2245" printed on its side. The setting is an industrial or warehouse environment with concrete walls and overhead pipes. A yellow safety barrier is visible in the foreground.

**INCREASE PROFIT  
FOR YOUR CLIENT**

**CREATE ROOM FOR MORE VALUABLE USES**

**ACCEPT LARGER TRUCKS OR LORRIES**

**DESIGN FOR EXTRA REVENUE**

[turntables.com.au](http://turntables.com.au)



## WHY AUSTRALIAN TURNTABLES

**Australian Turntables can help you design the available space to maximise benefit:**

Australian Turntables have helped hundreds of architects across the globe design loading docks and waste collection areas that work efficiently and safely while generating extra revenue opportunities for the development.

We do this by looking for every opportunity to reduce the space required for truck movements. This provides extra room for services, parking spaces, retail or back of house, or to help meet local government requirements.

With over 30+ years of specialising in helping architects, Australian Turntables have built a reputation of great support and service backed up with the worlds best quality product. Contact us with your design and see how our team helps you.

**DESIGN MORE SPACE**

**CREATE FLEXIBILITY**

**GENERATE REVENUE**

**SMART INVESTMENT**

**OPTIMISE YOUR DESIGN**





## A COMPANY & PRODUCT YOU CAN TRUST

Australian Turntables deliver products that are robust, reliable and built for many different industries and environments. We also supply turntables at any diameter that can accommodate hundreds of tonnes or multiple vehicles. This means you can be creative and gain maximum benefit for your project.

Reliability is key and Australian Turntables have the experience, with hundreds of thousands of operation hours and a reliability rate of 99.89%, to do the job day after day so your clients don't have to worry.

We work with you from the concept design stage, all the way through, supporting your team in design, engineering, safety, standards, specifications and construction. What is delivered, is the world's best turntable system.

## LOADING DOCK TURNTABLES

Suitable applications and industries;

Loading docks - Waste collection - Traffic management - Warehouse and logistic centres - Retail & commercial - Health - Government Defence - Education - Emergency services

**RELIABLE PERFORMANCE**

**QUALITY**

**SMART DESIGN**

**RETURN ON INVESTMENT**







## CASE STUDY

# ALDI WENTWORTHVILLE NSW

**Architect:** Conrad Gargett

**Project Completion:** 2016

**Australian Turntables contribution:** 12.5 metre truck turntable

Conrad Gargett are a 130 year old architectural firm who work with Aldi Supermarkets on their development requirements. For this project, Aldi had an operating store that had an opportunity to increase revenue if more retail space could be made available.

The existing loading dock and back of house was recognised as the best area to optimise and due to Australian Turntables being a nominated supplier of Aldi, we were engaged to support the design team.

Aldi Wentworthville deliveries are serviced by up to 12.5 metre rigid trucks so we used a turntable of the same diameter and designed the loading dock around the turntable with the minimum clearance possible. To ensure safety was not compromised we also designed and supplied a vehicle positioning and anti collision system that made sure the vehicle was positioned correctly, and stopped the turntable in case a person entered the rotation zone.

This project, built around the turntable gained an extra 470m<sup>2</sup> of retail space for the Client which provided a return of investment within months and has generated increased revenue ongoing.

## LOADING DOCK TURNTABLES







# COLES TESTIMONIAL



03/12/2020

**Ben Chapman**  
Australian Turntables

61 Collins Street, Kangaroo Flat VIC 3555  
t +61 3 5447 0525 | m 0413 160 057  
e [ben@turntables.com.au](mailto:ben@turntables.com.au)  
w [turntables.com.au](http://turntables.com.au)

Testimonial,

*"Australian Turntables has been on coles approved supplier list for many years, and with their help we have developed a detailed specification that has become a reference for developers and builders on complex mixed-use projects. Dealing with Australian Turntables, taught me that the product is more than just a turntable, but rather it is a whole package of durability, craftsmanship, and details. Recent projects with Australian Turntables was St Leonards, where Australian Turntables was involved in safety and risk management workshop meetings, between Coles and the developer (JQZ). The proposed solutions by Australian Turntables, from sensors, monitors, cameras, and traffic lights, have been integrated in the plan of management of a complex loading dock usage, that will cater for Big Coles Supermarket and Liquorland, Speciality retail shops, Public Library, and 3 Residential towers. I am very confident to nominate Australian Turntable to any project, as I know they will deliver with high integrity, and professionalism."*

Yours sincerely

**Alan Mhanna**  
Design Development Manager – NSW / ACT  
**Group Property**

**Coles Supermarkets Australia Pty Ltd** ABN 45 004 189 708  
6 Giffnock Avenue, Macquarie Park New South Wales 2113 Australia  
☎ +61 2 9919 1400 🌐 [coles.com.au](http://coles.com.au)

**coles** | Good things. Great value.

[turntables.com.au](http://turntables.com.au)



## DESIGN A BETTER LOADING DOCK

- Design a loading dock in less space
- Optimise the space for other more valuable uses
- Low profile design suitable for suspended slabs
- A design improvement that pays for itself within months
- A smarter way to position trucks safely

## TECHNICAL SUPPORT TO BENEFIT YOUR PROJECT

Autocad files, revit families and technical specifications available for download at

[www.turntables.com.au/downloads/](http://www.turntables.com.au/downloads/)





# LOADING DOCK SPECIFICATIONS

Model	HTT8-250	HTT9-250	HTT10-250	HTT11-250
Turntable Diameter (mm)	8000	9000	10000	11000
Vehicle accommodated (1)	MRV	MRV	HRV	HRV
Clearance Diameter (mm) (2)	11000	11000	14000	14000
Slab Depth (mm)(3)	250 min./260 max.			
Slab Radius (mm)	4400	4900	5400	5900
Drain Radius(mm)(4)	2500	2500	2500	2500
Drive Pit Setback (mm)	4950	5450	5950	6450
Drive Pit Width (mm)	1300			
Drive Pit Length (mm)	1100			
Drive Pit Depth (mm)	400			
Running Track Radius (mm)	3625	4125	4625	4625
Operating Capacity (kg)	30000			
Operating Speed (Nominal RPM)	0.5	0.5	0.4	0.4
Distributed Load Capacity (kPa) (5)	15			
Imposed Load - Centre (kN) (6))	279	346	429	512
Imposed Load - Running Track (kN/m)(6)	25	27	30	35
Lateral Force on Centre Bearing (7)	116	116	116	116
Minimum Concrete strength (MPa) (8)	25			
Slab Thickness (8)	Subject to client engineering			

**NOTES**

1. Suggested vehicle. Vehicle classification to Austroads Design Vehicles (2013).
2. Suggested clearance diameter based on the nominated vehicle positioned correctly on the turntable. This clearance zone can be reduced when an optional scanner safety system is implemented
3. Slab surface to be steel trowel finished.
4. Recommended drainage location/s shown. Actual drainage requirements specified by the client engineer which may include grease traps or sump pits.
5. Structural load capacity generally in accordance with AS/NZS 1170. Allows for full use of turntable area as a general trafficable area.
6. Imposed loads stated are, un-factored load based on the Distributed Load Capacity plus the turntable dead load.
7. Lateral Force applied based on a vehicle of maximum turntable operating capacity coming to a complete stop on the turntable from a speed of 10km/h over a distance of 1m.
8. Slab thickness and strength is to be specified by the client engineer.





Warranty  
on moving parts



Structural  
Warranty

## QUALITY & WARRANTY

Australian Turntables quality is backed by our 2 year warranty on all moving parts and a 15 year warranty on our structures. Our products are engineered to last.

We offer an extended warranty on moving parts to 5 years, for all customers who engage in an Annual service (conducted by Australian Turntables Service Agent) for this period.

The annual services can be included in your initial purchase to lock in current service rates.

Subject to warranty terms and conditions.



Certification Partner Global  
ISO 9001  
ISO 14001  
ISO 45001  
Lic No. OHS/R61/0378



[www.jas-anz.org/register](http://www.jas-anz.org/register)



[turntables.com.au](http://turntables.com.au)







# OUR CUSTOMERS

A Truck Turntable provides a solution for our customers, allowing them to maximise their space, allowing larger trucks to be loaded and unloaded efficiently. It will also reduce the required space for these zones, adding additional space to the buildings purpose, more retail space or warehouse space.

The traffic flow is much better with a turntable as it will eliminate the need to reverse off the street (impeding traffic) or having a space to turn the trucks around outside the loading docks.

## LOADING DOCK TURNTABLES

 coles RICHARD CROOKES  
CONSTRUCTIONS mace Vattanac  
PROPERTIES Built. ANACONDA



## DISTRIBUTORS & PROJECTS



-  Distributors & projects
-  Distributors
-  Projects





LOADING DOCK TURNTABLES

turntables.com.au



61 Collins Street, Kangaroo Flat 3555  
Victoria, Australia.



+61 3 5447 0525



sales@turntables.com.au