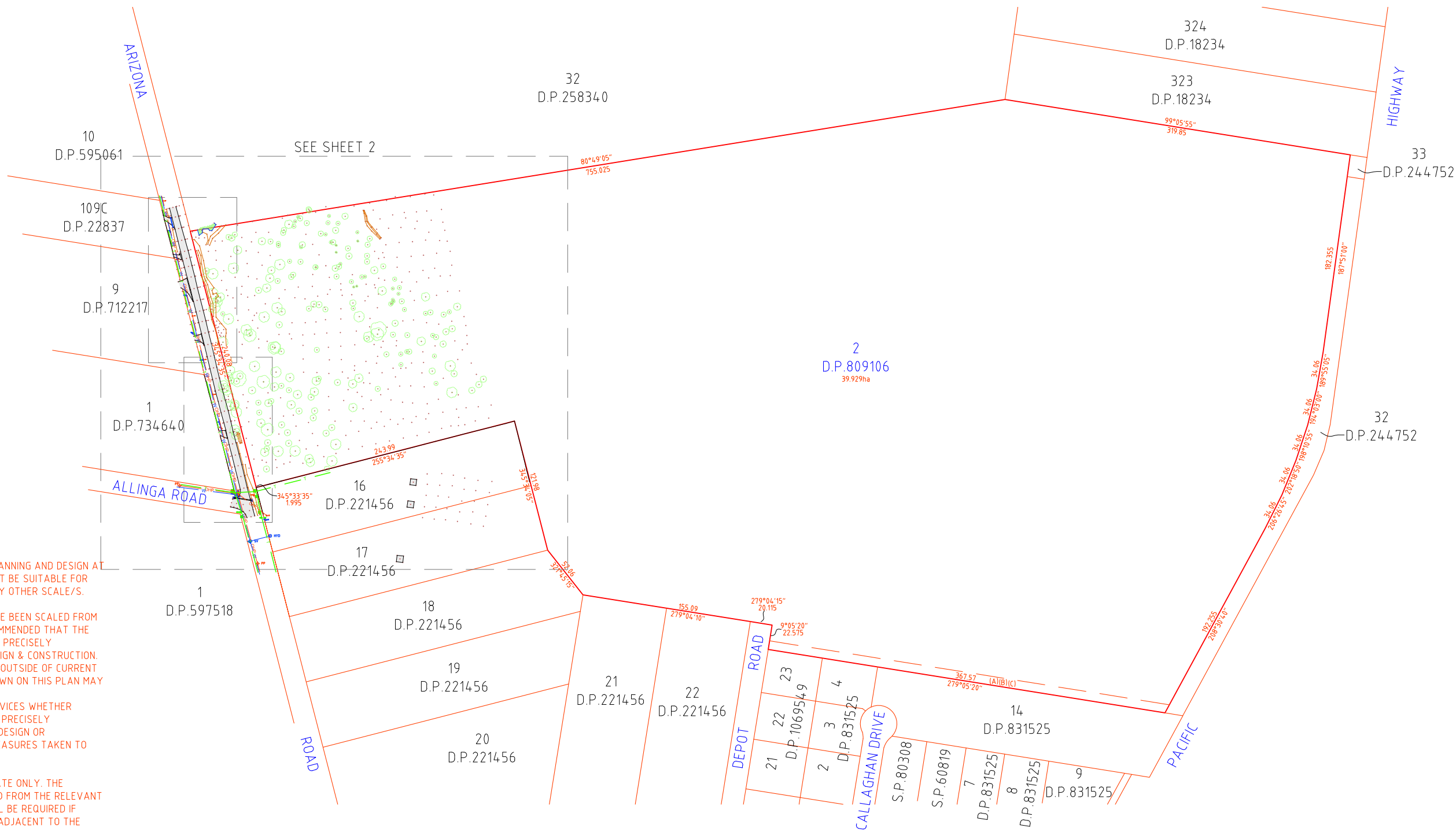


LEGEND

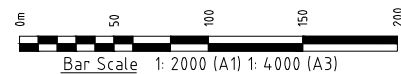
	BOUNDARY LINE
	ADJACENT BOUNDARY
	MINOR CONTOUR LINE
	MAJOR CONTOUR LINE
	EASEMENT
	FENCE LINE
	TOP & TOE OF BANKS
	STORMWATER PIPE
	CHP OVERHEAD POWER LINE
	UNDERGROUND WATER LINE
	UNDERGROUND TELECOMMUNICATIONS LINE
	BENCH MARK
	PP POWER POLE
	PPSP POWER POLE STAY POLE
	SV STOP VALVE
	HYD HYDRANT
	WM WATER METER
	TPIT TELECOMMUNICATIONS PIT
	TPIL TELECOMMUNICATIONS PILLAR
	DENOTES TREE
	SEE SHEET & TREE TABLE



NOTES:

1. FEATURES SHOWN TO SCALE ACCURACY.
2. THIS PLAN IS SUITABLE FOR DETAILED PLANNING AND DESIGN AT THE SCALE/S STATED. THE PLAN MAY NOT BE SUITABLE FOR ANY OTHER PURPOSE OR FOR USE AT ANY OTHER SCALE/S.
3. SERVICES LOCATED ONLY WHERE VISIBLE.
4. SERVICE LINES SHOWN ON THIS PLAN HAVE BEEN SCALED FROM RELEVANT AUTHORITY PLANS. IT IS RECOMMENDED THAT THE LOCATION OF THESE SERVICES SHOULD BE PRECISELY DETERMINED BY POTHOLING PRIOR TO DESIGN & CONSTRUCTION.
5. SERVICES HAVE NOT BEEN INVESTIGATED OUTSIDE OF CURRENT SURVEY SCOPE AREA. SERVICES NOT SHOWN ON THIS PLAN MAY EFFECT THE SUBJECT SITE.
6. THE LOCATION OF ALL UNDERGROUND SERVICES WHETHER SHOWN ON THE PLAN OR NOT, SHOULD BE PRECISELY DETERMINED BY POTHOLING BEFORE ANY DESIGN OR CONSTRUCTION WORK COMMENCES AND MEASURES TAKEN TO PROTECT THESE SERVICES FROM DAMAGE.
7. CONTOUR INTERVAL - 0.5m
8. THE BOUNDARIES SHOWN ARE APPROXIMATE ONLY. THE BOUNDARIES SHOWN HAVE BEEN COMPILED FROM THE RELEVANT DEPOSITED PLANS. FURTHER SURVEY WILL BE REQUIRED IF CONSTRUCTION IS TO TAKE PLACE ON OR ADJACENT TO THE BOUNDARIES.
9. ONLY 'SIGNIFICANT TREES' IDENTIFIED BY MJD ENVIRONMENTAL HAVE BEEN LOCATED AS PART OF OUR SURVEY. BOTH COMMON AND SCIENTIFIC TREE NAMES SHOWN WITHIN THE SIGNIFICANT TREE TABLE HAVE BEEN SUPPLIED BY MJD ENVIRONMENTAL ON 11th OCTOBER 2021.
10. DURING THE COURSE OF THIS SURVEY NO INVESTIGATION HAS BEEN UNDERTAKEN TO DETERMINE THE EXISTENCE OF ANY POSSIBLE SUBTERRANEAN ENCROACHMENTS.
11. THE SUBJECT PROPERTY IS AFFECTED BY A COVENANT. THE RELEVANT CONDITIONS OF THE COVENANT SHOULD BE CHECKED FOR COMPLIANCE PRIOR TO DESIGN & CONSTRUCTION. (R632080)

- (A) RIGHT OF CARRIAGEWAY (D.P.25834.0)
- (B) EASEMENT FOR SEWAGE (D.P.25834.0)
- (C) EASEMENT FOR ELECTRICITY (D.P.25834.0)



THIS PLAN IS COPYRIGHT AND SHALL REMAIN THE PROPERTY OF DE WITT CONSULTING. THE CLIENT NAMED ON THE PLAN IS GRANTED A LICENCE TO USE THE INFORMATION. USING THE INFORMATION CONTAINED IN THIS PLAN IS PROHIBITED UNLESS WRITTEN APPROVAL IS GRANTED BY DE WITT CONSULTING. THE PLAN AND INFORMATION MAY ONLY BE USED FOR THE PURPOSE FOR WHICH THE PLAN WAS DESIGNED.

de Witt Consulting
 planning ■ surveying ■ project management

HUNTER REGION
 7 Canberra Street Charlestown
 PO Box 850 Charlestown NSW 2290
 P 02 4942 5441 F 02 4942 5301
 E admin@de Wittconsulting.com.au

WESTERN REGION
 87 Herbert Street Gulgong
 PO Box 232 Gulgong NSW 2852
 P 02 6374 2911 F 02 6374 2922
 ABN 23 104 067 405

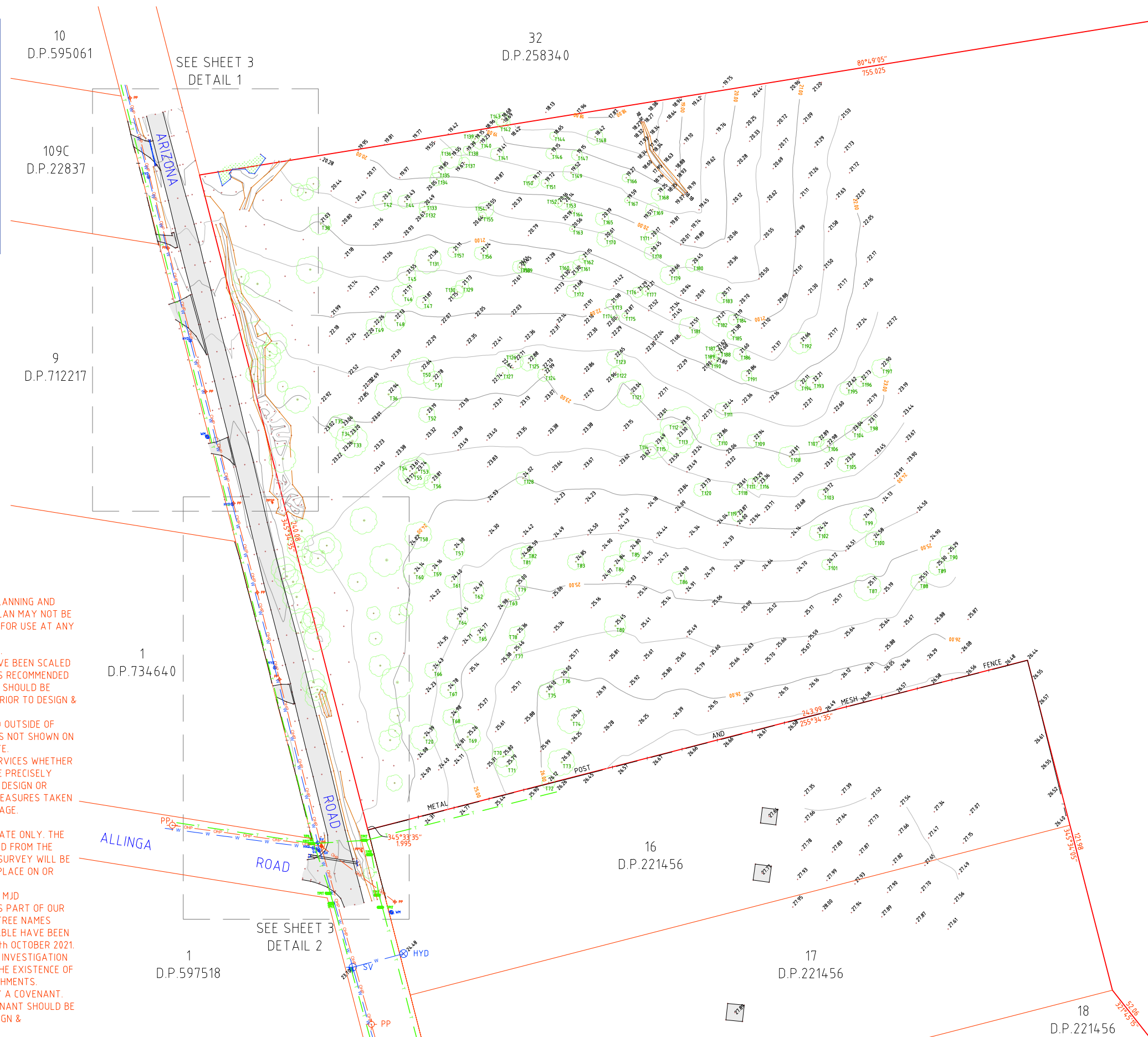
TITLE	DETAIL AND CONTOUR SURVEY OF LOT 2 D.P.809106	
Rev	Date	Amendment
A	21.10.21	INITIAL ISSUE

H		
G		
F		
E		
D		
C		
B		
A	21.10.21	INITIAL ISSUE
Rev	Date	Amendment

JOB ADDRESS: 125 ARIZONA ROAD, CHARMHAVEN		REVISION	JOB REF:
CLIENT: SHAC c/o- ST PHILLIPS CHRISTIAN COLLEGE		A	12199
SCALE: A1 1:2000 A3 1:4000	ORIGIN OF LEVELS	DRAWN	CJ
SURVEY DATE: 11.10.21	S.S.M.51659	SURVEYOR AT	MH
PLAN DATE: 21.10.21	RL 25.681	CHECKED	MH
DATUM: AHD		APPROVED	CC
CAD REF: 12199-DE-COMBINED-211011	DRAWING REF: 12199-DET-21.10.21	SHEET No	1/4

LEGEND

	BOUNDARY LINE
	ADJACENT BOUNDARY
	MINOR CONTOUR LINE
	MAJOR CONTOUR LINE
	EASEMENT
	FENCE LINE
	TOP & TOE OF BANKS
	STORMWATER PIPE
	OVERHEAD POWER LINE
	UNDERGROUND WATER LINE
	UNDERGROUND TELECOMMUNICATIONS LINE
	BENCH MARK
	POWER POLE
	POWER POLE STAY POLE
	STOP VALVE
	HYDRANT
	WATER METER
	TELECOMMUNICATIONS PIT
	TELECOMMUNICATIONS PILLAR
	DENOTES TREE SEE SHEET 4 TREE TABLE



NOTES:

1. FEATURES SHOWN TO SCALE ACCURACY.
2. THIS PLAN IS SUITABLE FOR DETAILED PLANNING AND DESIGN AT THE SCALE/S STATED. THE PLAN MAY NOT BE SUITABLE FOR ANY OTHER PURPOSE OR FOR USE AT ANY OTHER SCALE/S.
3. SERVICES LOCATED ONLY WHERE VISIBLE.
4. SERVICE LINES SHOWN ON THIS PLAN HAVE BEEN SCALED FROM RELEVANT AUTHORITY PLANS. IT IS RECOMMENDED THAT THE LOCATION OF THESE SERVICES SHOULD BE PRECISELY DETERMINED BY POTHOLES PRIOR TO DESIGN & CONSTRUCTION.
5. SERVICES HAVE NOT BEEN INVESTIGATED OUTSIDE OF CURRENT SURVEY SCOPE AREA. SERVICES NOT SHOWN ON THIS PLAN MAY EFFECT THE SUBJECT SITE.
6. THE LOCATION OF ALL UNDERGROUND SERVICES WHETHER SHOWN ON THE PLAN OR NOT, SHOULD BE PRECISELY DETERMINED BY POTHOLES BEFORE ANY DESIGN OR CONSTRUCTION WORK COMMENCES AND MEASURES TAKEN TO PROTECT THESE SERVICES FROM DAMAGE.
7. CONTOUR INTERVAL - 0.5m
8. THE BOUNDARIES SHOWN ARE APPROXIMATE ONLY. THE BOUNDARIES SHOWN HAVE BEEN COMPILED FROM THE RELEVANT DEPOSITED PLANS. FURTHER SURVEY WILL BE REQUIRED IF CONSTRUCTION IS TO TAKE PLACE ON OR ADJACENT TO THE BOUNDARIES.
9. ONLY 'SIGNIFICANT TREES' IDENTIFIED BY MJD ENVIRONMENTAL HAVE BEEN LOCATED AS PART OF OUR SURVEY. BOTH COMMON AND SCIENTIFIC TREE NAMES SHOWN WITHIN THE SIGNIFICANT TREE TABLE HAVE BEEN SUPPLIED BY MJD ENVIRONMENTAL ON 11th OCTOBER 2021.
10. DURING THE COURSE OF THIS SURVEY NO INVESTIGATION HAS BEEN UNDERTAKEN TO DETERMINE THE EXISTENCE OF ANY POSSIBLE SUBTERRANEAN ENCROACHMENTS.
11. THE SUBJECT PROPERTY IS AFFECTED BY A COVENANT. THE RELEVANT CONDITIONS OF THE COVENANT SHOULD BE CHECKED FOR COMPLIANCE PRIOR TO DESIGN & CONSTRUCTION. (R632080)

THIS PLAN IS COPYRIGHT AND SHALL REMAIN THE PROPERTY OF DE WITT CONSULTING. THE CLIENT NAMED ON THE PLAN IS GRANTED A LICENCE TO USE THE INFORMATION. USING THE INFORMATION CONTAINED IN THIS PLAN IS PROHIBITED UNLESS WRITTEN APPROVAL IS GRANTED BY DE WITT CONSULTING. THE PLAN AND INFORMATION MAY ONLY BE USED FOR THE PURPOSE FOR WHICH THE PLAN WAS DESIGNED.

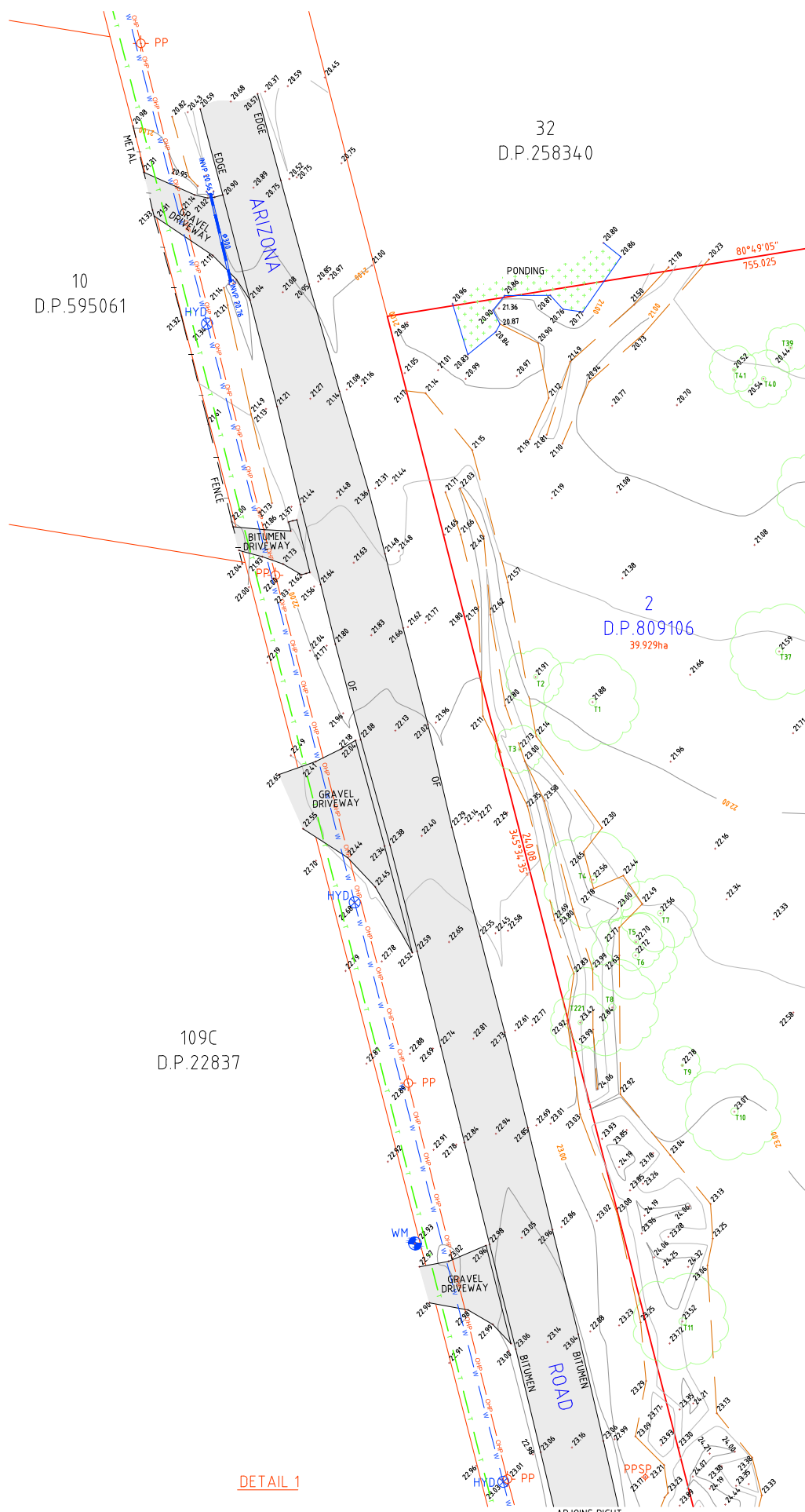
de Witt Consulting
 planning ■ surveying ■ project management
 HUNTER REGION
 7 Canberra Street Charlestown
 PO Box 850 Charlestown NSW 2290
 P 02 4942 5441 F 02 4942 5301
 E admin@de Wittconsulting.com.au
 WESTERN REGION
 87 Herbert Street Gulgong
 PO Box 232 Gulgong NSW 2852
 P 02 6374 2911 F 02 6374 2922
 ABN 23 104 067 405

TITLE	DETAIL AND CONTOUR SURVEY OF
	LOT 2 D.P.809106

Rev	Date	Amendment
A	21.10.21	INITIAL ISSUE

JOB ADDRESS: 125 ARIZONA ROAD, CHARMHAVEN		REVISION	JOB REF:
CLIENT: SHAC c/o- ST PHILLIPS CHRISTIAN COLLEGE		A	12199
SCALE: A1 1:750 A3 1:1500	ORIGIN OF LEVELS	DRAWN	CJ
SURVEY DATE: 21.10.21	S.S.M.51659	SURVEYOR AT	MH
PLAN DATE: 21.10.21	RL 25.681	CHECKED	MH
DATUM: AHD		APPROVED	CC
CAD REF: 12199-DE-COMBINED-211011	DRAWING REF: 12199-DET-21.10.21		

SHEET No
2/4

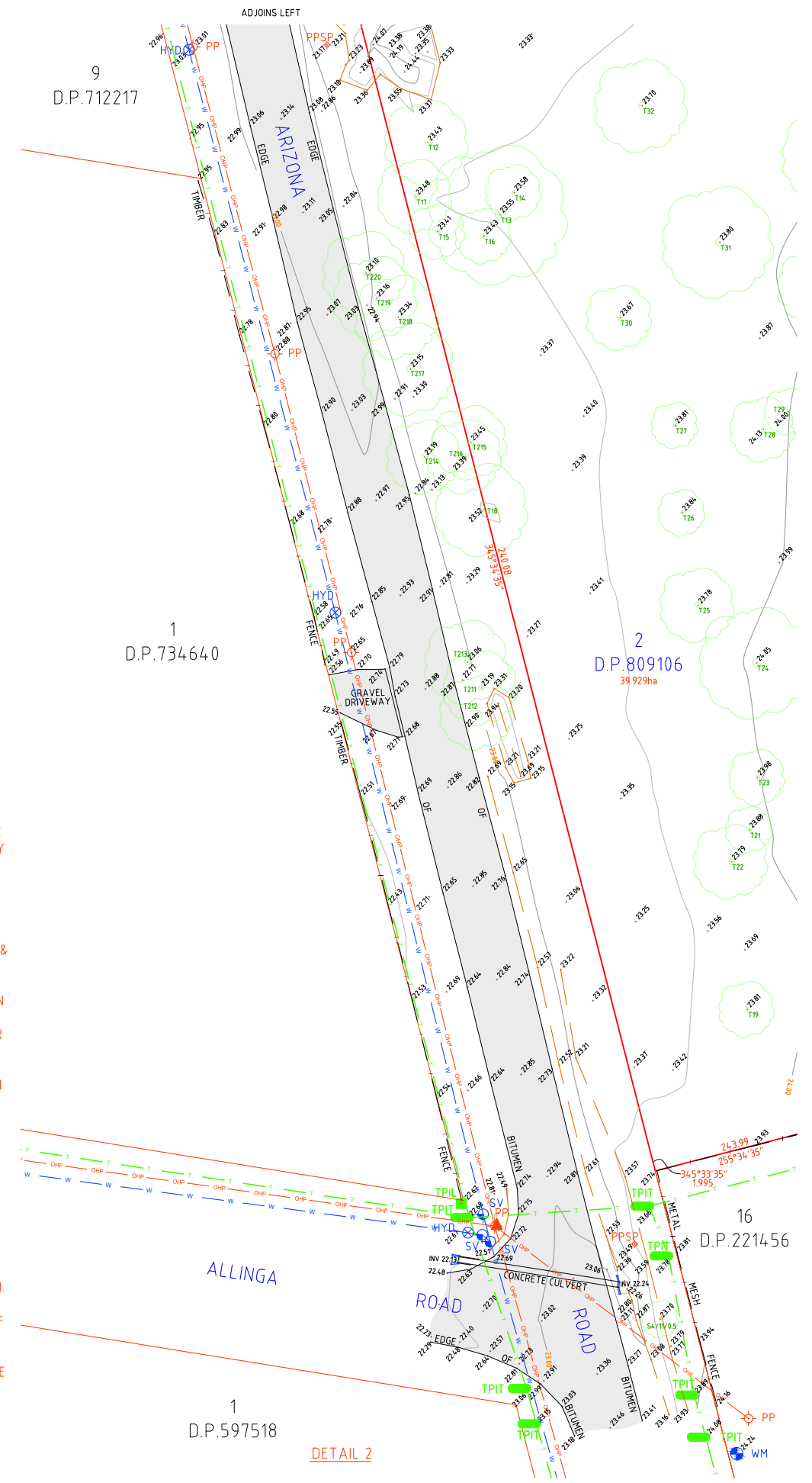
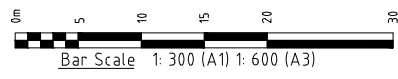


LEGEND

	BOUNDARY LINE
	ADJACENT BOUNDARY
	MINOR CONTOUR LINE
	MAJOR CONTOUR LINE
	EASEMENT
	FENCE LINE
	TOP & TOE OF BANKS
	STORMWATER PIPE
	OHP OVERHEAD POWER LINE
	UWL UNDERGROUND WATER LINE
	UTL UNDERGROUND TELECOMMUNICATIONS LINE
	BENCH MARK
	PP POWER POLE
	PPSP POWER POLE STAY POLE
	SV STOP VALVE
	HYD HYDRANT
	WM WATER METER
	TPIT TELECOMMUNICATIONS PIT
	TPIL TELECOMMUNICATIONS PILLAR
	DENOTES TREE SEE SHEET 4 TREE TABLE

NOTES:

1. FEATURES SHOWN TO SCALE ACCURACY.
2. THIS PLAN IS SUITABLE FOR DETAILED PLANNING AND DESIGN AT THE SCALE/S STATED. THE PLAN MAY NOT BE SUITABLE FOR ANY OTHER PURPOSE OR FOR USE AT ANY OTHER SCALE/S.
3. SERVICES LOCATED ONLY WHERE VISIBLE.
4. SERVICE LINES SHOWN ON THIS PLAN HAVE BEEN SCALED FROM RELEVANT AUTHORITY PLANS. IT IS RECOMMENDED THAT THE LOCATION OF THESE SERVICES SHOULD BE PRECISELY DETERMINED BY POTHOLING PRIOR TO DESIGN & CONSTRUCTION.
5. SERVICES HAVE NOT BEEN INVESTIGATED OUTSIDE OF CURRENT SURVEY SCOPE AREA. SERVICES NOT SHOWN ON THIS PLAN MAY AFFECT THE SUBJECT SITE.
6. THE LOCATION OF ALL UNDERGROUND SERVICES WHETHER SHOWN ON THE PLAN OR NOT, SHOULD BE PRECISELY DETERMINED BY POTHOLING BEFORE ANY DESIGN OR CONSTRUCTION WORK COMMENCES AND MEASURES TAKEN TO PROTECT THESE SERVICES FROM DAMAGE.
7. CONTOUR INTERVAL - 0.5m
8. THE BOUNDARIES SHOWN ARE APPROXIMATE ONLY. THE BOUNDARIES SHOWN HAVE BEEN COMPILED FROM THE RELEVANT DEPOSITED PLANS. FURTHER SURVEY WILL BE REQUIRED IF CONSTRUCTION IS TO TAKE PLACE ON OR ADJACENT TO THE BOUNDARIES.
9. ONLY 'SIGNIFICANT TREES' IDENTIFIED BY MJD ENVIRONMENTAL HAVE BEEN LOCATED AS PART OF OUR SURVEY. BOTH COMMON AND SCIENTIFIC TREE NAMES SHOWN WITHIN THE SIGNIFICANT TREE TABLE HAVE BEEN SUPPLIED BY MJD ENVIRONMENTAL ON 11th OCTOBER 2021.
10. DURING THE COURSE OF THIS SURVEY NO INVESTIGATION HAS BEEN UNDERTAKEN TO DETERMINE THE EXISTENCE OF ANY POSSIBLE SUBTERRANEAN ENCROACHMENTS.
11. THE SUBJECT PROPERTY IS AFFECTED BY A COVENANT. THE RELEVANT CONDITIONS OF THE COVENANT SHOULD BE CHECKED FOR COMPLIANCE PRIOR TO DESIGN & CONSTRUCTION. (R632080)



THIS PLAN IS COPYRIGHT AND SHALL REMAIN THE PROPERTY OF DE WITT CONSULTING. THE CLIENT NAMED ON THE PLAN IS GRANTED A LICENCE TO USE THE INFORMATION. USING THE INFORMATION CONTAINED IN THIS PLAN IS PROHIBITED UNLESS WRITTEN APPROVAL IS GRANTED BY DE WITT CONSULTING. THE PLAN AND INFORMATION MAY ONLY BE USED FOR THE PURPOSE FOR WHICH THE PLAN WAS DESIGNED.

de Witt Consulting
 planning ■ surveying ■ project management

HUNTER REGION
 7 Canberra Street Charlestown
 PO Box 850 Charlestown NSW 2290
 P 02 4942 5441 F 02 4942 5301
 E admin@dewittconsulting.com.au

WESTERN REGION
 87 Herbert Street Gulgong
 PO Box 232 Gulgong NSW 2852
 P 02 6374 2911 F 02 6374 2922
 ABN 23 104 067 405

TITLE		
DETAIL AND CONTOUR SURVEY OF		
LOT 2 D.P.809106		
Rev	Date	Amendment
A	21.10.21	INITIAL ISSUE

H		
G		
F		
E		
D		
C		
B		
A	21.10.21	INITIAL ISSUE
Rev	Date	Amendment

JOB ADDRESS: 125 ARIZONA ROAD, CHARMHAVEN		REVISION	JOB REF:
CLIENT: SHAC c/o- ST PHILLIPS CHRISTIAN COLLEGE		A	12199
SCALE: A1 1:300 A3 1:600	ORIGIN OF LEVELS	DRAWN	CJ
SURVEY DATE: 11.10.21	S.S.M.51659	SURVEYOR AT	MH
PLAN DATE: 21.10.21	RL 25.681	CHECKED	MH
DATUM: AHD		APPROVED	CC
CAD REF: 12199-DE-COMBINED-211011	DRAWING REF: 12199-DET-21.10.21		
			SHEET No
			3/4

SIGNIFICANT TREE TABLE											
NUMBER	SPREAD/ HEIGHT/ TRUNK DIA.	COMMON NAME	SCIENTIFIC NAME	NUMBER	SPREAD/ HEIGHT/ TRUNK DIA.	COMMON NAME	SCIENTIFIC NAME	NUMBER	SPREAD/ HEIGHT/ TRUNK DIA.	COMMON NAME	SCIENTIFIC NAME
T1	S10/9/0.4	Scribbly Gum	<i>Eucalyptus haemastoma</i>	T69	S10/8/0.4	Brown Stringybark	<i>Eucalyptus capitellata</i>	T143	S5/12/0.3	Red Bloodwood	<i>Corymbia gummifera</i>
T2	S6/14/0.35	Smooth-barked Apple	<i>Angophora costata</i>	T70	S8/8/0.3	Scribbly Gum	<i>Eucalyptus haemastoma</i>	T144	S3/10/0.3	Scribbly Gum	<i>Eucalyptus haemastoma</i>
T3	S5/6/0.3	Smooth-barked Apple	<i>Angophora costata</i>	T71	S8/10/0.3	Scribbly Gum	<i>Eucalyptus haemastoma</i>	T146	S4/12/0.35	Red Bloodwood	<i>Corymbia gummifera</i>
T4	S10/8/0.4	Scribbly Gum	<i>Eucalyptus haemastoma</i>	T72	S5/7/0.3	Scribbly Gum	<i>Eucalyptus haemastoma</i>	T147	S4/10/0.35	Scribbly Gum	<i>Eucalyptus haemastoma</i>
T5	S6/10/0.3	Scribbly Gum	<i>Eucalyptus haemastoma</i>	T73	S10/8/0.4	Scribbly Gum	<i>Eucalyptus haemastoma</i>	T148	S6/13/0.8	Smooth-barked Apple	<i>Angophora costata</i>
T6	S9/10/0.3	Scribbly Gum	<i>Eucalyptus haemastoma</i>	T74	S10/8/0.4	Scribbly Gum	<i>Eucalyptus haemastoma</i>	T149	S6/10/0.3	Red Bloodwood	<i>Corymbia gummifera</i>
T7	S8/8/0.35	Smooth-barked Apple	<i>Angophora costata</i>	T75	S6/7/0.4	Scribbly Gum	<i>Eucalyptus haemastoma</i>	T150	S5/10/0.4	Red Bloodwood	<i>Corymbia gummifera</i>
T8	S10/12/1.1	Smooth-barked Apple	<i>Angophora costata</i>	T76	S6/6/0.4	Scribbly Gum	<i>Eucalyptus haemastoma</i>	T151	S3/10/0.3	Red Bloodwood	<i>Corymbia gummifera</i>
T9	S4/8/0.3	Scribbly Gum	<i>Eucalyptus haemastoma</i>	T77	S6/6/0.3	Scribbly Gum	<i>Eucalyptus haemastoma</i>	T152	S3/8/0.3	Red Bloodwood	<i>Corymbia gummifera</i>
T10	S10/6/0.4	Scribbly Gum	<i>Eucalyptus haemastoma</i>	T78	S6/8/0.3	Scribbly Gum	<i>Eucalyptus haemastoma</i>	T153	S5/10/0.3	Scribbly Gum	<i>Eucalyptus haemastoma</i>
T11	S10/8/0.6	Brown Stringybark	<i>Eucalyptus capitellata</i>	T79	S8/7/0.4	Brown Stringybark	<i>Eucalyptus capitellata</i>	T154	S6/10/0.3	Scribbly Gum	<i>Eucalyptus haemastoma</i>
T12	S9/11/0.35	Brown Stringybark	<i>Eucalyptus capitellata</i>	T80	S8/5/0.3	Red Bloodwood	<i>Corymbia gummifera</i>	T155	S3/10/0.4	Scribbly Gum	<i>Eucalyptus haemastoma</i>
T13	S15/10/0.6	Brown Stringybark	<i>Eucalyptus capitellata</i>	T81	S8/8/0.6	Scribbly Gum	<i>Eucalyptus haemastoma</i>	T156	S5/8/0.3	Scribbly Gum	<i>Eucalyptus haemastoma</i>
T14	S6/10/0.3	Brown Stringybark	<i>Eucalyptus capitellata</i>	T82	S5/6/0.5	Scribbly Gum	<i>Eucalyptus haemastoma</i>	T157	S4/5/0.3	Scribbly Gum	<i>Eucalyptus haemastoma</i>
T15	S6/10/0.3	Brown Stringybark	<i>Eucalyptus capitellata</i>	T83	S6/5/0.5	Scribbly Gum	<i>Eucalyptus haemastoma</i>	T158	S5/10/0.3	Scribbly Gum	<i>Eucalyptus haemastoma</i>
T16	S6/6/0.3	Brown Stringybark	<i>Eucalyptus capitellata</i>	T84	S8/5/0.4	Scribbly Gum	<i>Eucalyptus haemastoma</i>	T159	S3/11/0.3	Scribbly Gum	<i>Eucalyptus haemastoma</i>
T17	S8/8/0.3	Brown Stringybark	<i>Eucalyptus capitellata</i>	T85	S8/8/0.3	Scribbly Gum	<i>Eucalyptus haemastoma</i>	T160	S6/10/0.4	Scribbly Gum	<i>Eucalyptus haemastoma</i>
T18	S10/9/0.8	Scribbly Gum	<i>Eucalyptus haemastoma</i>	T86	S5/5/0.35	Scribbly Gum	<i>Eucalyptus haemastoma</i>	T161	S5/8/0.3	Scribbly Gum	<i>Eucalyptus haemastoma</i>
T19	S6/5/0.3	Scribbly Gum	<i>Eucalyptus haemastoma</i>	T87	S10/12/0.35	Scribbly Gum	<i>Eucalyptus haemastoma</i>	T162	S3/10/0.3	Red Bloodwood	<i>Corymbia gummifera</i>
T20	S10/6/0.4	Brown Stringybark	<i>Eucalyptus capitellata</i>	T88	S6/6/0.3	Smooth-barked Apple	<i>Angophora costata</i>	T163	S2/8/0.3	Scribbly Gum	<i>Eucalyptus haemastoma</i>
T21	S5/7/0.3	Scribbly Gum	<i>Eucalyptus haemastoma</i>	T89	S6/8/0.3	Red Ironbark	<i>Eucalyptus fibrosa</i>	T164	S2/8/0.3	Red Bloodwood	<i>Corymbia gummifera</i>
T22	S8/10/0.3	Brown Stringybark	<i>Eucalyptus capitellata</i>	T90	S6/10/0.35	Red Ironbark	<i>Eucalyptus fibrosa</i>	T165	S5/12/0.3	Scribbly Gum	<i>Eucalyptus haemastoma</i>
T23	S6/7/0.3	Brown Stringybark	<i>Eucalyptus capitellata</i>	T98	S6/5/0.35	Scribbly Gum	<i>Eucalyptus haemastoma</i>	T166	S3/8/0.3	Scribbly Gum	<i>Eucalyptus haemastoma</i>
T24	S12/8/0.4	Brown Stringybark	<i>Eucalyptus capitellata</i>	T99	S10/6/0.5	Scribbly Gum	<i>Eucalyptus haemastoma</i>	T167	S2/10/0.3	Scribbly Gum	<i>Eucalyptus haemastoma</i>
T25	S8/8/0.3	Brown Stringybark	<i>Eucalyptus capitellata</i>	T100	S6/6/0.3	Scribbly Gum	<i>Eucalyptus haemastoma</i>	T168	S5/12/0.3	Scribbly Gum	<i>Eucalyptus haemastoma</i>
T26	S5/8/0.4	Brown Stringybark	<i>Eucalyptus capitellata</i>	T101	S4/8/0.5	Scribbly Gum	<i>Eucalyptus haemastoma</i>	T169	S5/10/0.3	Scribbly Gum	<i>Eucalyptus haemastoma</i>
T27	S5/6/0.3	Scribbly Gum	<i>Eucalyptus haemastoma</i>	T102	S6/6/0.3	Scribbly Gum	<i>Eucalyptus haemastoma</i>	T170	S6/10/0.3	Scribbly Gum	<i>Eucalyptus haemastoma</i>
T28	S7/8/0.3	Brown Stringybark	<i>Eucalyptus capitellata</i>	T103	S4/6/0.4	Scribbly Gum	<i>Eucalyptus haemastoma</i>	T171	S5/9/0.3	Scribbly Gum	<i>Eucalyptus haemastoma</i>
T29	S5/8/0.3	Scribbly Gum	<i>Eucalyptus haemastoma</i>	T104	S6/6/0.35	Scribbly Gum	<i>Eucalyptus haemastoma</i>	T172	S5/10/0.4	Scribbly Gum	<i>Eucalyptus haemastoma</i>
T30	S7/5/0.8	Scribbly Gum	<i>Eucalyptus haemastoma</i>	T105	S6/6/0.3	Scribbly Gum	<i>Eucalyptus haemastoma</i>	T173	S4/10/0.3	Scribbly Gum	<i>Eucalyptus haemastoma</i>
T31	S12/7/0.8	Brown Stringybark	<i>Eucalyptus capitellata</i>	T106	S5/6/0.4	Scribbly Gum	<i>Eucalyptus haemastoma</i>	T174	S2/8/0.3	Red Bloodwood	<i>Corymbia gummifera</i>
T32	S10/6/0.5	Brown Stringybark	<i>Eucalyptus capitellata</i>	T107	S4/5/0.5	Scribbly Gum	<i>Eucalyptus haemastoma</i>	T175	S2/7/0.3	Scribbly Gum	<i>Eucalyptus haemastoma</i>
T33	S12/7/0.3	Scribbly Gum	<i>Eucalyptus haemastoma</i>	T108	S8/8/0.5	Scribbly Gum	<i>Eucalyptus haemastoma</i>	T176	S4/10/0.35	Red Bloodwood	<i>Corymbia gummifera</i>
T34	S6/10/0.35	Smooth-barked Apple	<i>Angophora costata</i>	T109	S5/8/0.5	Smooth-barked Apple	<i>Angophora costata</i>	T177	S3/9/0.3	Red Bloodwood	<i>Corymbia gummifera</i>
T35	S10/10/0.35	Scribbly Gum	<i>Eucalyptus haemastoma</i>	T110	S5/6/0.3	Scribbly Gum	<i>Eucalyptus haemastoma</i>	T178	S5/10/0.3	Scribbly Gum	<i>Eucalyptus haemastoma</i>
T36	S10/8/0.5	Scribbly Gum	<i>Eucalyptus haemastoma</i>	T111	S6/8/0.6	Scribbly Gum	<i>Eucalyptus haemastoma</i>	T179	S7/12/0.7	Red Bloodwood	<i>Corymbia gummifera</i>
T37	S10/10/0.6	Scribbly Gum	<i>Eucalyptus haemastoma</i>	T112	S15/6/0.4	Scribbly Gum	<i>Eucalyptus haemastoma</i>	T180	S5/10/0.7	Scribbly Gum	<i>Eucalyptus haemastoma</i>
T38	S8/7/0.6	Scribbly Gum	<i>Eucalyptus haemastoma</i>	T113	S12/6/0.3	Scribbly Gum	<i>Eucalyptus haemastoma</i>	T181	S8/15/0.5	Red Bloodwood	<i>Corymbia gummifera</i>
T39	S5/10/0.45	Scribbly Gum	<i>Eucalyptus haemastoma</i>	T114	S5/5/0.4	Scribbly Gum	<i>Eucalyptus haemastoma</i>	T182	S3/10/0.35	Red Bloodwood	<i>Corymbia gummifera</i>
T40	S6/9/0.3	Scribbly Gum	<i>Eucalyptus haemastoma</i>	T115	S10/6/0.3	Scribbly Gum	<i>Eucalyptus haemastoma</i>	T183	S4/10/0.35	Red Bloodwood	<i>Corymbia gummifera</i>
T41	S5/10/0.35	Scribbly Gum	<i>Eucalyptus haemastoma</i>	T116	S5/5/0.35	Scribbly Gum	<i>Eucalyptus haemastoma</i>	T184	S4/10/0.3		
T42	S7/12/0.55	Smooth-barked Apple	<i>Angophora costata</i>	T117	S4/5/0.3	Scribbly Gum	<i>Eucalyptus haemastoma</i>	T185	S3/10/0.3	Red Bloodwood	<i>Corymbia gummifera</i>
T44	S5/10/0.3	Smooth-barked Apple	<i>Angophora costata</i>	T118	S4/5/0.4	Scribbly Gum	<i>Eucalyptus haemastoma</i>	T186	S5/10/0.5	Red Bloodwood	<i>Corymbia gummifera</i>
T45	S7/6/0.3	Scribbly Gum	<i>Eucalyptus haemastoma</i>	T119	S4/5/0.3	Scribbly Gum	<i>Eucalyptus haemastoma</i>	T187	S3/10/0.3	Red Bloodwood	<i>Corymbia gummifera</i>
T46	S8/6/0.3	Red Bloodwood	<i>Corymbia gummifera</i>	T120	S5/5/0.3	Scribbly Gum	<i>Eucalyptus haemastoma</i>	T188	S3/10/0.3	Red Bloodwood	<i>Corymbia gummifera</i>
T47	S5/7/0.35	Scribbly Gum	<i>Eucalyptus haemastoma</i>	T121	S10/6/0.3	Scribbly Gum	<i>Eucalyptus haemastoma</i>	T189	S3/9/0.3	Red Bloodwood	<i>Corymbia gummifera</i>
T48	S8/6/0.3	Scribbly Gum	<i>Eucalyptus haemastoma</i>	T122	S4/8/0.45	Scribbly Gum	<i>Eucalyptus haemastoma</i>	T190	S4/5/0.3	Scribbly Gum	<i>Eucalyptus haemastoma</i>
T49	S6/7/0.35	Scribbly Gum	<i>Eucalyptus haemastoma</i>	T123	S6/8/0.4	Scribbly Gum	<i>Eucalyptus haemastoma</i>	T191	S4/8/0.4	Red Bloodwood	<i>Corymbia gummifera</i>
T50	S10/5/0.5	Scribbly Gum	<i>Eucalyptus haemastoma</i>	T124	S5/8/0.3	Scribbly Gum	<i>Eucalyptus haemastoma</i>	T192	S8/9/0.5	Red Bloodwood	<i>Corymbia gummifera</i>
T51	S7/4/0.5	Scribbly Gum	<i>Eucalyptus haemastoma</i>	T125	S6/8/0.35	Scribbly Gum	<i>Eucalyptus haemastoma</i>	T193	S5/8/0.7	Scribbly Gum	<i>Eucalyptus haemastoma</i>
T52	S6/5/0.4	Scribbly Gum	<i>Eucalyptus haemastoma</i>	T126	S6/7/0.4	Scribbly Gum	<i>Eucalyptus haemastoma</i>	T194	S4/6/0.3	Scribbly Gum	<i>Eucalyptus haemastoma</i>
T53	S10/5/0.3	Scribbly Gum	<i>Eucalyptus haemastoma</i>	T127	S5/7/0.3	Scribbly Gum	<i>Eucalyptus haemastoma</i>	T195	S5/8/0.3	Scribbly Gum	<i>Eucalyptus haemastoma</i>
T54	S5/5/0.3	Scribbly Gum	<i>Eucalyptus haemastoma</i>	T128	S5/5/0.6	Scribbly Gum	<i>Eucalyptus haemastoma</i>	T196	S4/5/0.3	Scribbly Gum	<i>Eucalyptus haemastoma</i>
T55	S12/6/0.3	Scribbly Gum	<i>Eucalyptus haemastoma</i>	T129	S5/7/0.3	Scribbly Gum	<i>Eucalyptus haemastoma</i>	T197	S7/8/0.4	Scribbly Gum	<i>Eucalyptus haemastoma</i>
T56	S6/5/0.3	Brown Stringybark	<i>Eucalyptus capitellata</i>	T130	S5/5/0.3	Scribbly Gum	<i>Eucalyptus haemastoma</i>	T211	S8/11/0.35	Brown Stringybark	<i>Eucalyptus capitellata</i>
T57	S8/6/0.5	Scribbly Gum	<i>Eucalyptus haemastoma</i>	T131	S10/6/0.3	Scribbly Gum	<i>Eucalyptus haemastoma</i>	T212	S8/10/0.35	Brown Stringybark	<i>Eucalyptus capitellata</i>
T58	S10/8/0.8	Scribbly Gum	<i>Eucalyptus haemastoma</i>	T132	S4/10/0.4	Scribbly Gum	<i>Eucalyptus haemastoma</i>	T213	S9/11/0.4	Scribbly Gum	<i>Eucalyptus haemastoma</i>
T59	S5/8/0.3	Red Ironbark	<i>Eucalyptus fibrosa</i>	T133	S4/10/0.3	Red Bloodwood	<i>Corymbia gummifera</i>	T214	S8/10/0.35	Brown Stringybark	<i>Eucalyptus capitellata</i>
T60	S8/5/0.4	Scribbly Gum	<i>Eucalyptus haemastoma</i>	T134	S5/10/0.4	Scribbly Gum	<i>Eucalyptus haemastoma</i>	T215	S8/8/0.3	Brown Stringybark	<i>Eucalyptus capitellata</i>
T61	S5/8/0.3	Brown Stringybark	<i>Eucalyptus capitellata</i>	T135	S5/10/0.3	Scribbly Gum	<i>Eucalyptus haemastoma</i>	T216	S8/8/0.3	Brown Stringybark	<i>Eucalyptus capitellata</i>
T62	S8/8/0.4	Scribbly Gum	<i>Eucalyptus haemastoma</i>	T136	S8/9/0.35	Scribbly Gum	<i>Eucalyptus haemastoma</i>	T217	S10/10/0.5	Brown Stringybark	<i>Eucalyptus capitellata</i>
T63	S6/8/0.3	Scribbly Gum	<i>Eucalyptus haemastoma</i>	T137	S4/10/0.3	Red Bloodwood	<i>Corymbia gummifera</i>	T218	S9/11/0.35	Brown Stringybark	<i>Eucalyptus capitellata</i>
T64	S8/8/0.4	Brown Stringybark	<i>Eucalyptus capitellata</i>	T138	S3/10/0.3	Scribbly Gum	<i>Eucalyptus haemastoma</i>	T219	S9/10/0.3	Brown Stringybark	<i>Eucalyptus capitellata</i>
T65	S6/6/0.4	Scribbly Gum	<i>Eucalyptus haemastoma</i>	T139	S3/12/0.3	Red Bloodwood	<i>Corymbia gummifera</i>	T220	S9/11/0.4	Brown Stringybark	<i>Eucalyptus capitellata</i>
T66	S6/8/0.3	Brown Stringybark	<i>Eucalyptus capitellata</i>	T140	S5/12/0.3	Scribbly Gum	<i>Eucalyptus haemastoma</i>	T221	S6/8/0.35	Scribbly Gum	<i>Eucalyptus haemastoma</i>
T67	S6/8/0.3	Brown Stringybark	<i>Eucalyptus capitellata</i>	T141	S5/12/0.3	Red Bloodwood	<i>Corymbia gummifera</i>				
T68	S6/8/0.3	Brown Stringybark	<i>Eucalyptus capitellata</i>	T142	S5/12/0.3	Red Bloodwood	<i>Corymbia gummifera</i>				

THIS PLAN IS COPYRIGHT AND SHALL REMAIN THE PROPERTY OF DE WITT CONSULTING. THE CLIENT NAMED ON THE PLAN IS GRANTED A LICENCE TO USE THE INFORMATION. USING THE INFORMATION CONTAINED IN THIS PLAN IS PROHIBITED UNLESS WRITTEN APPROVAL IS GRANTED BY DE WITT CONSULTING. THE PLAN AND INFORMATION MAY ONLY BE USED FOR THE PURPOSE FOR WHICH THE PLAN WAS DESIGNED.



de Witt Consulting
 planning ■ surveying ■ project management
 HUNTER REGION
 7 Canberra Street Charlestown
 PO Box 850 Charlestown NSW 2290
 P 02 4942 5441 F 02 4942 5301
 E admin@de Wittconsulting.com.au
 WESTERN REGION
 87 Herbert Street Gulgong
 PO Box 232 Gulgong NSW 2852
 P 02 6374 2911 F 02 6374 2922
 ABN 28 104 067 405

TITLE
 DETAIL AND CONTOUR SURVEY OF
 LOT 2 D.P.809106

H		
G		
F		
E		
D		
C		
B		
A	21.10.21	INITIAL ISSUE
Rev	Date	Amendment

JOB ADDRESS: 125 ARIZONA ROAD, CHARMHAVEN		REVISION	JOB REF:
CLIENT: SHAC c/o- ST PHILLIPS CHRISTIAN COLLEGE		A	12199
SCALE: N/A	ORIGIN OF LEVELS	DRAWN	CJ
SURVEY DATE: 11.10.21	S.S.M.51659	SURVEYOR AT	MH
PLAN DATE: 21.10.21	RL 25.681	CHECKED	CC
DATUM: AHD		APPROVED	
CAD REF: 12199-DE-COMBINED-211011	DRAWING REF: 12199-DET-21.10.21		
			SHEET No 4/4