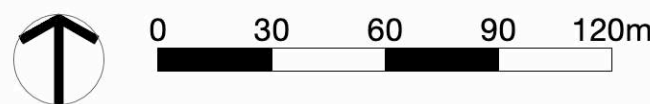


NEWCASTLE JOCKEY CLUB STABLES DEVELOPMENT LANDSCAPE DEVELOPMENT APPLICATION DOCUMENTATION (DA) No. 125 CHATHAM STREET, BROADMEADOW, NSW 2292.



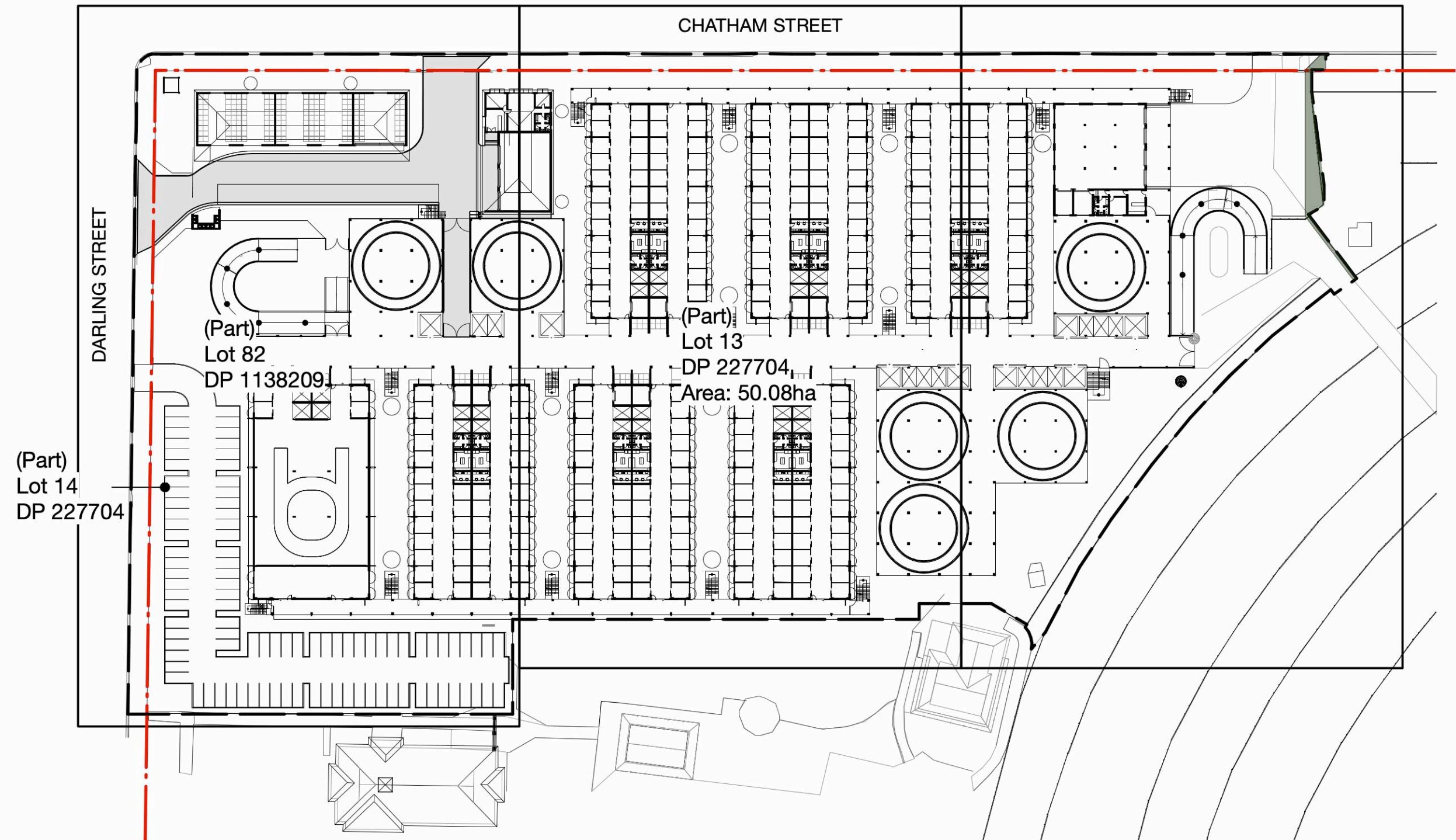
LOCALITY PLAN Source: Nearmap, 2020
Scale 1:2000 @ A1

SITE LOCATION

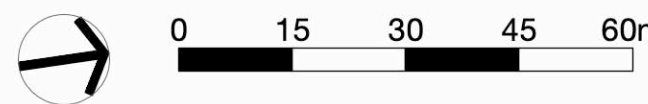


Sheet No.	Drawing Title
LP01	COVER SHEET
LP02	SITE ANALYSIS PLAN
LP03	KEY PLAN
LP04	LANDSCAPE PLAN 01
LP05	LANDSCAPE PLAN 02
LP06	LANDSCAPE PLAN 03
LP07	THEMING PLAN

Revision	Date
B	17/6/21
B	17/6/21
B	17/6/21
B	17/6/21
B	17/6/21
B	17/6/21
B	17/6/21



SITE PLAN
Scale 1:1000 @ A1





SITE ANALYSIS PLAN
Scale 1:750 @ A1



1. View north along Chatham Street



2. View east along Darling Street



3. View towards tie up stalls



4. View from tie up stalls



5. View from tie up stalls

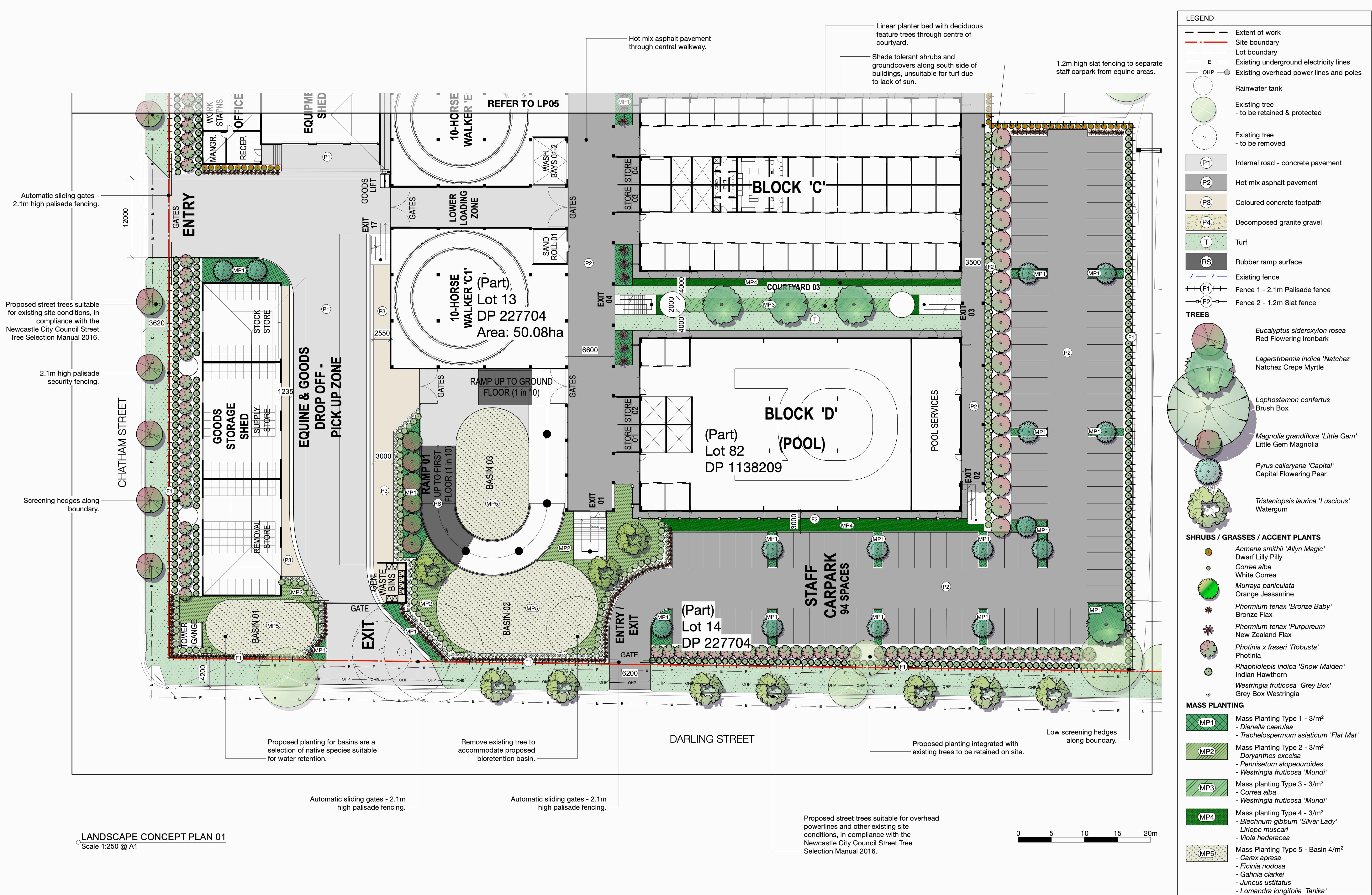


6. View of established fig trees

- LEGEND**
- Extent of work
 - Site boundary
 - Lot boundary
 - 15.0 Existing contours
 - Existing fence
 - Site cross fall
 - Existing electricity lines
 - OHP Existing overhead power lines and poles
 - SW Existing stormwater lines
 - Existing Spot level
 - Existing tree
 - Entry / Exit
 - Wind direction
 - R1 Adjacent Residential
 - R2 Adjacent Recreation
 - Photograph Marker Location

CHATHAM STREET







1948

Rev

B



Shade tolerant shrubs and groundcovers along south side of buildings, unsuitable for turf due to lack of sun.

Hot mix asphalt pavement along
— central walkway.

Gravel pathway to allow access to garden and rainwater tanks for maintenance.

CLIENT:
Newcastle Jockey Club

No:	DATE:	REVISION:
A	30/4/21	DRAFT DA FOR ISSUE
B	17/6/21	FOR SUBMISSION

BY: PROJECT:
AG Newcastle Jockey Club Stables Development
AG No. 21 Chatham Street, Broadmeadow, NSW

Status: **FOR SUBMISSION**

NOTE: DRAWING PURPOSES FOR APPROVAL ONLY. NOT FOR CONSTRUCTION.

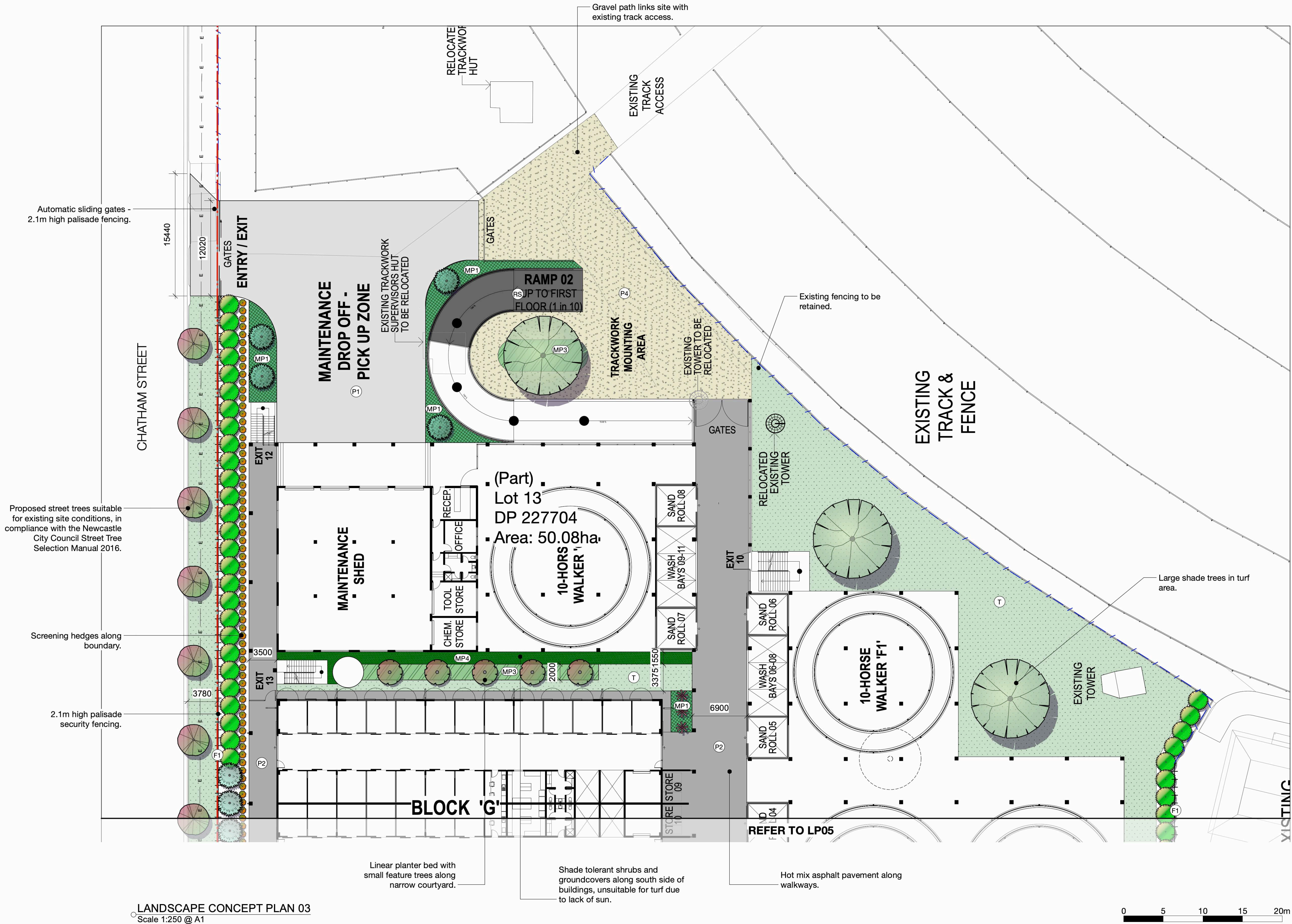
ARCHITECT:
EJE Architecture

ENGINEER:
MPC Consulting Engineers

Studio 1, 88 Fern Street
PO Box 111
Islington NSW 2296
Phone (02) 4965 3500
Fax (02) 4965 3555
admin@moirla.com.au
www.moirla.com.au

LANDSCAPE CONCEPT PLAN 02
Scale 1:250 @ A1





LEGEND	
	Extent of work
	Site boundary
	Lot boundary
	Existing underground electricity lines
	Existing overhead power lines and poles
	Rainwater tank
	Existing tree - to be retained & protected
	Existing tree - to be removed
	Internal road - concrete pavement
	Hot mix asphalt pavement
	Coloured concrete footpath
	Decomposed granite gravel
	Turf
	Rubber ramp surface
	Existing fence
	Fence 1 - 2.1m Palisade fence
	Fence 2 - 1.2m Slat fence
TREES	
	<i>Eucalyptus sideroxylon rosea</i> Red Flowering Ironbark
	<i>Lagerstroemia indica</i> 'Natchez' Natchez Crepe Myrtle
	<i>Lophostemon confertus</i> Brush Box
	<i>Magnolia grandiflora</i> 'Little Gem' Little Gem Magnolia
	<i>Pyrus calleryana</i> 'Capital' Capital Flowering Pear
	<i>Tristania laurina</i> 'Luscious' Watergum
SHRUBS / GRASSES / ACCENT PLANTS	
	<i>Acmena smithii</i> 'Allyn Magic' Dwarf Lilly Pilly
	<i>Correa alba</i> White Correa
	<i>Murraya paniculata</i> Orange Jessamine
	<i>Phormium tenax</i> 'Bronze Baby' Bronze Flax
	<i>Phormium tenax</i> 'Purpureum' New Zealand Flax
	<i>Photinia x fraseri</i> 'Robusta' Photinia
	<i>Rhaphiolepis indica</i> 'Snow Maiden' Indian Hawthorn
	<i>Westringia fruticosa</i> 'Grey Box' Grey Box Westringia
MASS PLANTING	
	Mass Planting Type 1 - 3/m² - <i>Dianella caerulea</i> - <i>Trachelospermum asiaticum</i> 'Flat Mat'
	Mass Planting Type 2 - 3/m² - <i>Doryanthes excelsa</i> - <i>Pennisetum alopecuroides</i> - <i>Westringia fruticosa</i> 'Mundi'
	Mass planting Type 3 - 3/m² - <i>Correa alba</i> - <i>Westringia fruticosa</i> 'Mundi'
	Mass planting Type 4 - 3/m² - <i>Blechnum gibbum</i> 'Silver Lady' - <i>Liriope muscari</i> - <i>Viola hederacea</i>
	Mass Planting Type 5 - Basin 4/m² - <i>Carex aprisa</i> - <i>Ficinia nodosa</i> - <i>Gahnia clarkii</i> - <i>Juncus ustitatus</i> - <i>Lomandra longifolia</i> 'Tanika'

TREES



Eucalyptus sideroxylon 'Rosea'
Red Flowering Ironbark



Lagerstroemia indica 'Natchez'
Natchez Crepe Myrtle



Lophostemon confertus
Brush Box



Magnolia grandiflora 'Little Gem'
Little Gem Magnolia



Pyrus calleryana 'Capital'
Ornamental Pear



Tristaniopsis laurina 'Luscious'
Water Gum

SHRUBS



Acmena smithii 'Allyn Magic'
Dwarf Lilly Pilly



Correa alba
White Correa



Murraya paniculata
Orange Jessamine



Photinia x fraseri 'Robusta'
Photinia Robusta



Raphiolepis indica 'Snow Maiden'
Indian Hawthorn



Westringia fruticosa 'Grey Box'
Grey Box Coastal Rosemary

GROUND COVERS



Liriope muscari
Lily Turf



Trachelospermum asiaticum 'Flat Mat'
Japanese Star Jasmine



Westringia fruticosa 'Mundi'
Mundi Coastal Rosemary



Viola hederacea
Native Violet

GRASSES



Dianella caerulea
Flax Lily



Pennisetum alopecuroides
Chines Fountain Grass



Phormium tenax 'Bronze Baby'
Bronze New Zealand Flax



Blechnum gibbum 'Silver Lady'
Silver Lady Fern



Doryanthes excelsa
Gymea Lily



Phormium tenax 'Purpureum'
New Zealand Flax

BASIN PLANTING



Carex appressa
Mat Rush



Ficinia nodosa
Knobby Club Rush



Gahnia clarkei
Saw Sedge



Juncus usitatus
Common Rush

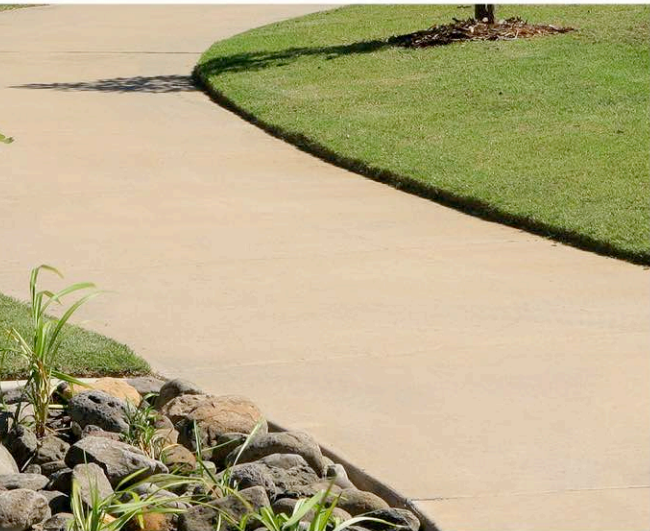


Lomandra longifolia 'Tanika'
Spiny-head Mat Rush

PLANTING SCHEDULE

Code	Botanical Name	Common Name	Mature Height	Mature Spread	Pot Size	Qty
Trees						
EUC sid	Eucalyptus sideroxylon 'Rosea'	Red Flowering Iron Bark	15 - 20m	6 - 10m	25 litre	22
LAG ind	Lagerstroemia indica 'Natchez'	Crepe Myrtle	5 - 10m	3.5 - 6m	25 litre	18
LOP con	Lophostemon confertus	Brush Box	10 - 15m	8-10m	45 litre	3
MAG gem	Magnolia grandiflora 'Little Gem'	Little Gem Southern Magnolia	4 - 6m	2 - 3m	75 litre	42
PYR cap	Pyrus calleryana 'Capital'	Capital Flowering Pear	8 - 12m	2 - 3m	25 litre	28
TRI lus	Tristaniopsis laurina 'Luscious'	Water Gum	5 - 10m	4 - 6m	25 litre	10
Shrubs						
ACM all	Acmena smithii 'Allyn Magic'	Dwarf Lilly Pilly	0.4 - 0.5m	0.3 - 0.5m	200mm	
COR alb	Correa alba	White Correa	0.9 - 1.5m	0.9 - 1.2m	200mm	
MUR pan	Murraya paniculata	Orange Jessamine	3 - 4m	2 - 3m	200mm	
PHO fra	Photinia x fraseri 'Robusta'	Photinia	3m	2m	200mm	
RHA sno	Raphiolepis 'Snow Maiden'	Indian Hawthorn	0.60 - 0.75m	0.3 - 0.6m	200mm	
WES gre	Westringia 'Grey Box'	Grey Box Westringia	0.3 - 0.4m	0.3 - 0.4m	100mm	
Grasses						
PHO bro	Phormium tenax 'Bronze Baby'	Bronze Flax	0.5 - 0.7m	0.5 - 0.7m	100mm	
DIA cae	Dianella caerulea	Blue Flax Lily	0.45 - 0.6m	0.3 - 0.6m	100mm	
PEN alo	Pennisetum alopecuroides	Fountain Grass	0.9 - 1.5m	0.6 - 0.9m	100mm	
Accent Plants						
PHO ten p	Phormium tenax 'Purpureum'	New Zealand Flax	1.8m	1.8m	200mm	
DOR exc	Doryanthes excelsa	Gymea Lily	1.5 - 3m	1.2 - 2.0m	200mm	
BLE gib	Blechnum gibbum 'Silver Lady'	Silver Lady Fern	1 - 1.2m	1 - 1.2m	200mm	
Ground Covers						
LIR mus	Liriope Muscari	Lily Turf	0.3 - 0.6m	0.3 - 0.6m	100	
TRA asi	Trachelospermum asiaticum 'Flat Mat'	Japanese Star Jasmine	0.3 - 0.4m	3 - 4m	100mm	
VIO hed	Viola hederacea	Native Violet	0.1 - 0.2m	0.3 - 1m	100mm	
WES mun	Westringia fruticosa 'Mundi'	Mundi Coastal Rosemary	0.4 - 0.5m	1.5m	100mm	
Basin Plants						
CAR app	Carex appressa	Tall Sedge	0.9 - 1.5m	0.3 - 0.6m	100mm	
FIC nod	Ficinia nodosa	Knobby Club-rush	0.75 - 0.9m	0.0 - 0.3m	100mm	
GAH cla	Gahnia clarkei	Saw Sedge	1.5 - 3m	0.9 - 1.2m	100mm	
JUN usi	Juncus usitatus	Common Rush	0.9 - 1.5m	0.6 - 0.9m	100mm	
LOM tan	Lomandra longifolia 'Tanika'	Spiny-head Mat Rush	0.45 - 0.6m	0.6 - 0.9m	100mm	

SURFACE FINISHES



Coloured concrete footpath



Decomposed granite footpath



Hot mix asphalt pavement

FENCING



2.1m high palisade fencing



1.2m high slat fencing