
Appendix D

Continuation Project engagement

D.1 Gunlake Quarry ongoing engagement

Gunlake has been actively engaging with the Quarry's stakeholders since 2008. Recent ongoing engagement is summarised in Table D.1.

Table D.1 Ongoing engagement

Forum	Description
Community Consultative Committee (CCC)	<p>The Gunlake Quarry CCC has operated since 2013. The committee is independently chaired by Don Elder and includes five community members, a Goulburn Mulwaree Council representative and Gunlake representatives. The CCC generally meets three to four times per year.</p> <p>The CCC meeting minutes are available on the Gunlake website: www.gunlake.com.au/quarry-community/#committee.</p> <p>The most recent CCC meeting was on 27 August 2021.</p>
Website	<p>The Gunlake Quarries website (www.gunlake.com.au/gunlake-quarries) provides an overview of the Quarry and the Gunlake Group.</p> <p>The website provides a full range of environmental reports regarding the quarry including:</p> <ul style="list-style-type: none">• the Quarry's management plans;• environmental monitoring results and annual review;• the Quarry's Environment Protection Licence;• Independent Environmental Audit; and• a link to the Gunlake Quarry Extension Project EIS and associated approval documents. <p>The website also provides community information and a community liaison form (www.gunlake.com.au/quarry-community).</p>

Table D.1 **Ongoing engagement**

Forum	Description
Community programs	<p>Gunlake participates in numerous local community programs and events including:</p> <ul style="list-style-type: none"> • annual commitments: <ul style="list-style-type: none"> – Goulburn District Education Foundation (major contributor); – Marulan Australia Day Committee (major sponsor); – Tallong Apple Day Festival (major sponsor); – Marulan Chamber of Commerce Events: Marulan Kite Festival Art Show (major sponsor) and NSW Horologists Exhibition (major sponsor); and – trades training scholarships. • Other recent community commitments and initiatives include: <ul style="list-style-type: none"> – Marulan Public School: major Contributor to Playground upgrade; – Marulan Rural Fire Brigade: major contribution to fire station training room upgrade; – Goulburn Mulwaree Council, Marulan Village Working Party: co-contributor to the barbeque cover; – Bundanoon Wombat Care: loan of vehicle after bushfires; – Gibraltar Road residents crown road upgrade: donated construction materials; – Marulan Country Women’s Association: co-contributor to the provision of a community defibrillator; – Marulan District Historical Society Community Garden; – Marulan CWA new fence; and – Marulan District Historical Society/Marulan Uniting Church driveway upgrade. • Gunlake also participates in: <ul style="list-style-type: none"> – the Goulburn Mulwaree Council: Marulan Village Plan Working Party member; – the Goulburn Secondary Schools Work Experience Placement Program: committee member and participant in local career expos; – Regional Development Australia: ongoing panel member at a local ‘jobs agenda’ forums; and – the Marulan Region Chamber of Commerce: member business.
Newsletters	<p>Gunlake produces and distributes regular updates to the community, both on its website and through the Discover Marulan newsletter.</p> <p>Past copies of the community updates are available on the Gunlake Quarries website.</p>
Community telephone line/email	<p>Gunlake operates a Community telephone line: 02 4841 1344.</p> <p>Gunlake operates a dedicated email address (community@gunlake.com.au) with a response guaranteed within 48 hours.</p>
Ongoing consultation	<p>Gunlake regularly meet with stakeholders regarding ongoing operations and proposed developments at the quarry, including:</p> <ul style="list-style-type: none"> • Parliament of NSW Member for Goulburn; • Local NSW Legislative Council Member of Parliament; • Parliament of Australia Member for Hume; • Goulburn Mulwaree Council – Mayor, General Manager and council officers; • NSW Police – Goulburn Area Command; and • site staff and a range of local community members and groups on an ongoing basis.

D.2 Continuation Project engagement

A summary of the engagement that specifically addressed the Continuation Project is provided in Table D.2.

Table D.2 Continuation Project engagement

Activity	Format	Timeframe	Participation
Meetings with key agencies, including Goulburn Mulwaree Council, NSW Environment Protection Authority (EPA), and Department of Agriculture, Water and the Environment (DAWE), TfNSW, NSW Police, State and Federal Members	Face to face, videoconference and teleconference	October 2020– August 2021	Relevant government officers.
Letter to transport route residents	Letterbox drop	October 2020	Distributed to all residences along the primary and secondary transport routes.
Gunlake December 2020 Newsletter	Newsletter and media	December 2020	Newsletter distributed via letterbox drop directly to transport route residents and within Discover Marulan online and print publications.
CCC meeting	Face to face	4 December 2020	CCC members
Gunlake Quarry Modification 2/Continuation Project Community information session 1	Face to face	4 December 2020	Advertised via the December 2020 Discover Marulan Newsletter – Eight attendees.
Letter to Registered Aboriginal Parties	Letter	July 2021	Consultation letters via email to Registered Aboriginal Parties.
Consultation with government agencies in accordance with the SEARs: <ul style="list-style-type: none"> Heritage NSW; South East Local Land Services; Mining, Exploration and Geoscience, Regional NSW; DPIE Water and the Natural Resources Access Regulator; Crown Lands; NSW Rural Fire Service; Water NSW; EPA; NSW Health – Southern NSW Local Health District; Primary Industries Group – Agriculture; Biodiversity and Conservation Division within DPIE. 	Letter	July – August 2021	Consultations letters via email to government agencies in accordance with the requirements of the SEARs.

Table D.2 **Continuation Project engagement**

Activity	Format	Timeframe	Participation
In-depth interviews with: <ul style="list-style-type: none"> • Local residents and members of the CCC; • Marulan Rural Fire Brigade; • Marulan Chamber of Commerce; • Marulan Public School; • Marulan Country Women's Association; • the Historical Society; • the local police service; • Goulburn District Education Foundation; and • Mission Australia. 	Interviews via videoconference and telephone	July – August 2021	In-depth interviews involved a discussion of the values, vulnerabilities and strengths of the local community, as well as the identification of perceived impacts and benefits as a consequence of the Continuation Project.
Gunlake August 2021 Newsletter	Newsletter and media	August 2021	Newsletter distributed via letterbox drop directly to transport route residents and within Discover Marulan online and print publications
CCC meeting 2	Videoconference	27 August 2021	CCC members

D.3 Aboriginal heritage consultation letter

The Gunlake Quarry Registered Aboriginal Parties (RAPs) comprise:

- Gulgunya Ngunawal Heritage Aboriginal Consultancy
- Wullung
- Nundagurri Aboriginal Corporation
- Pejar LALC
- Walbunja Aboriginal Corporation
- Gunyuu
- Gundungurra Aboriginal Heritage Association Inc
- Murrumbull
- Bilinga
- Wingikara
- Munyunga
- Yerramurra
- Badu
- Merrigarn
- Murri Bidgee Mullangari Aboriginal Corporation
- Duncan Falk Consultancy
- Gunjeewong Cultural Heritage Aboriginal Corporation
- Karrial
- Buru Ngunawal Aboriginal Corporation
- Koomurri Ngunawal Aboriginal Corporation
- Thunderstone Aboriginal Cultural and Land Management Services
- Corroboree Aboriginal Corporation
- Goobah Development Pty Ltd
- Gangangarra
- Wandandian
- Ngunawal
- EORA
- Ngunawal Heritage Aboriginal Corporation

The consultation letter submitted to the RAPs for the Continuation Project is provided below.

29 July 2021

Level 1, 146 Hunter Street
Newcastle NSW 2300

T 02 4907 4800

E info@emmconsulting.com.au

www.emmconsulting.com.au

Re: Gunlake Quarry Continuation Project: Project information and Aboriginal cultural heritage matters

Dear Registered Party,

1 Introduction

1.1 Project background

Gunlake Quarries Pty Ltd (Gunlake) operates a hard rock quarry (the 'Quarry') located at 715 Brayton Road, Marulan NSW. The Quarry is approximately 7 kilometres (km) north-west of the centre of Marulan in the Goulburn Mulwaree local government area (Figure 1). The land surrounding the Quarry is rural land with a low population density.

Since the Quarry received its most recent approval in 2017, the tonnage of product dispatched by the Quarry has steadily increased and, with an infrastructure boom in the Greater Sydney region, Gunlake forecast that demand for products from the Quarry (dispatched by road along the primary transport route) will continue to increase further. It is forecast that the Quarry will not be able to meet this demand within the limits of the current Extension Project Approval.

It is proposed to increase the tonnage of product dispatched from the Quarry, in response to the increased demand. This will require more truck movement limits than currently approved. The ignimbrite hard-rock resource will continue to be extracted and processed using the methods currently employed at the Quarry. These proposed changes are known as the Gunlake Quarry Continuation Project (the 'Continuation Project'). If approved, the Continuation Project will allow the Quarry to meet product demand once approved.

1.2 Purpose of this letter

EMM Consulting Pty Limited has prepared this letter to the Quarry registered Aboriginal parties (RAPs) to:

- provide an overview of the Continuation Project and its approval pathway;
- provide an Aboriginal heritage background relating to the Quarry;
- assess the potential impacts on Aboriginal heritage of the Continuation Project; and
- propose appropriate Aboriginal cultural heritage management measures for RAP review and comments prior to finalisation and the submission of an environmental impact statement (EIS) to the Department of Planning, Industry and Environment (DPIE).

We welcome your written feedback at your earliest opportunity, and no later than 26 August 2021. Letters attached to email is the preferred mode of written communication as it will reduce postal waiting periods.

1.3 Gunlake Quarry Continuation Project

Gunlake propose to increase the tonnage of product dispatched from the Quarry in response to the increased demand. This will require the truck movement limits to be increased. The methods for the extraction and processing rock will be unchanged. Gunlake will lodge a new state significant (SSD) application and environmental impact statement (EIS) for the Continuation Project.

As part of the original quarry development, Gunlake financed the construction of a bypass road (Ambrose Road) that connects Brayton Road to Red Hills Road, allowing trucks to bypass Marulan. As part of the Gunlake Quarry Extension Project (Quarry extension), Gunlake financed the upgrade of the Primary Transport Route in accordance with the Austroads Guidelines for rural roads with 1,000 to 3,000 average vehicle movements per day (Austroads 2020) – the upgrades exceed the requirements of the Extension Project Approval conditions. These upgrades enable increased truck movements, the primary component of the Continuation Project, while maintaining the safety of these public roads.

The Continuation Project operations would remain similar to the currently approved Extension Project operations with the following proposed changes:

- Increased daily truck movements: from a maximum of 245 inbound and 245 outbound movements (approved) to a maximum of 375 inbound and 375 outbound movements.
- Increased extraction and processing rates to meet product dispatch within the current approved hours.
- Increased the pit depth to 546 m AHD.
- Quarry life to 30 years from the date of approval.

These changes will require an increased quarry and transport workforce.

The application will seek to maintain all existing Quarry components and activities as well as the increased product transport.

The following aspects of the Quarry's operations are **not** proposed to be changed:

- the average and maximum number of approved truck movements along the Secondary Transport Route;
- the Quarry operation hours, and the hours that the Primary and Secondary Transport Routes are used;
- the footprint of the Quarry pit; or
- the hours and frequency of blasting.

2 Aboriginal heritage background

2.1 Previous investigations

2.1.1 Original quarry area

In 2007, Australian Archaeological Survey Consultants (AASC) completed an Aboriginal Cultural Heritage Assessment (ACHA) for the original quarry layout and associated infrastructure.

Three small artefact scatters, each with four to six artefacts of low significance were identified in the quarry footprint. These sites were named GL1, GL2 and GL3. A further two sites, GL4 and GL5 (one isolated find and

one artefact scatter comprising two artefacts), were identified on the Ambrose Road alignment over 4 km south-east of the quarry.

Sites GL1 to GL5 were subsequently collected under Project Approval 07-0074. The contents of sites GL1, GL2 and GL3 were reburied together close to their original location north of the quarry site access road. This new location was registered on AHIMS as “GL123 (Gunlake Quarry) relocated GL1, GL2 and GL3”. The contents of GL4 and GL5 were reburied together close to the original location of GL4. This new location was registered on the Aboriginal Heritage Management System (AHIMS) as “GL45 (Gunlake Quarry) relocated GL4 and GL5”.

The locations of the sites within the quarry boundary and their reburied locations are shown in Figure 1. The management status of these sites is detailed in Table 5.1 of the Gunlake Quarry Aboriginal Heritage Management Plan (AHMP)¹ (EMM 2020).

Cultural Heritage Management Australia (CHMA) completed an ACHA for a modification to the originally approved quarry to extend the pit and overburden embankment areas (Project Approval 07-0074 Modification 2) (CHMA 2014) in September 2014. No additional Aboriginal objects or places were identified as part of this ACHA.

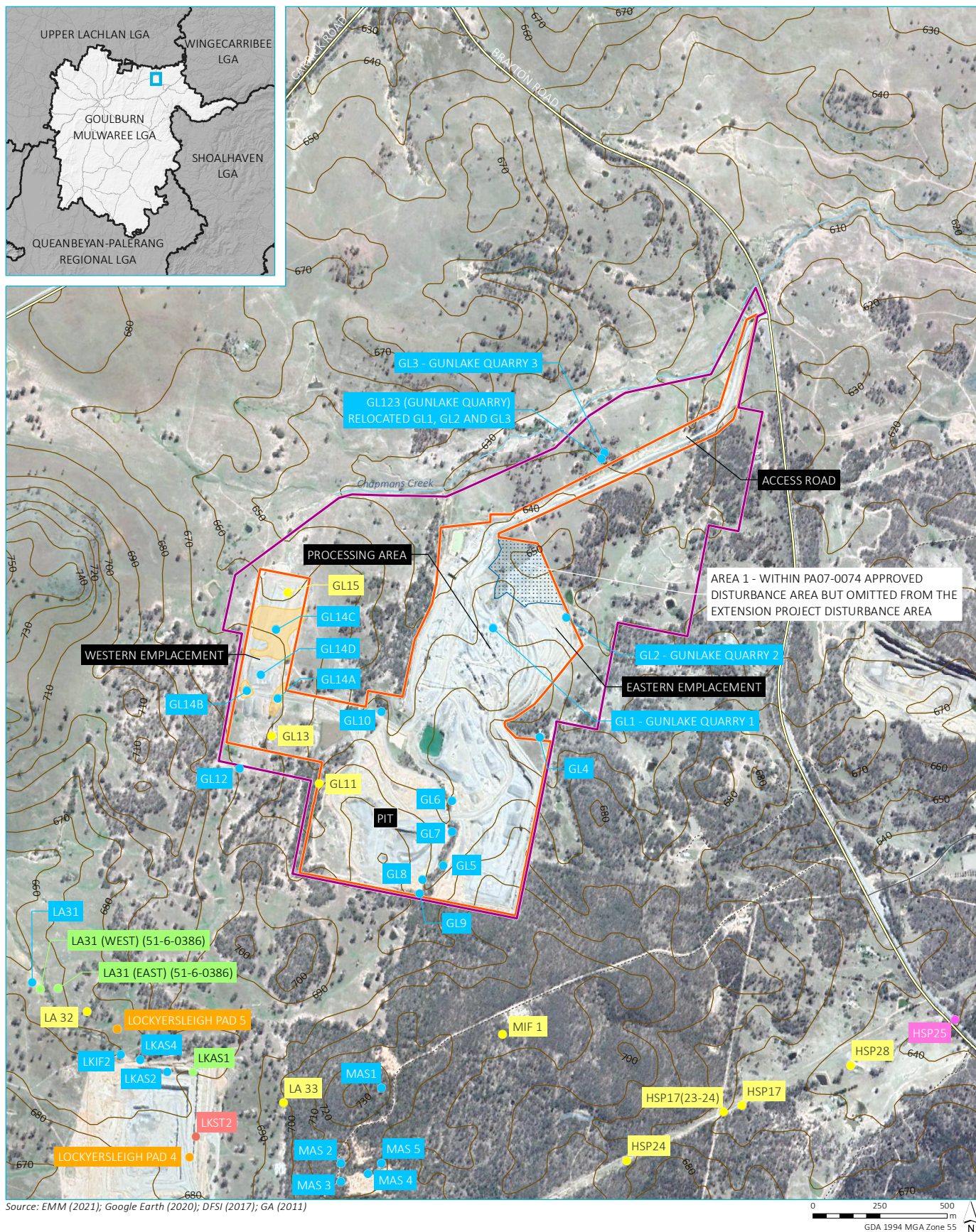
2.1.2 Quarry extension area

In 2016, Gunlake applied to extend the quarry disturbance area and to increase the total tonnage of product dispatched from the Quarry. This is known as the ‘Extension Project’ and required an EIS to be prepared as part of a new State significant development (SSD) application. An ACHA for the Extension Project was prepared by EMM in 2016 (EMM 2016). As part of preparing the ACHA, EMM archaeologist Ryan Desic, accompanied by five Aboriginal sites officers, surveyed the extension area over two days in July 2015. The survey covered the entire extension area and identified 15 Aboriginal sites comprising stone artefacts, 12 of which were open stone artefact sites and three which were isolated finds. The sites are shown on Figures 3.1–3.3 and summarised in Table 5.1 of the AHMP.

The ACHA also included a test excavation program and 89 artefacts were recovered from 42 m² of test pits. The paucity of subsurface artefact frequencies in all tested areas was attributed to the poor integrity of the soil deposit, which was severely truncated by erosion. It was concluded that the surface artefact distributions offered a better representation of the local archaeological record.

All of Aboriginal sites identified, except one, were assessed to have low archaeological significance. The cluster site GL14 (GL14a, GL14b, GL14c and GL14d) was assessed to have moderate archaeological significance. This was because it was an extensive artefact scatter with good examples of artefact types and raw materials. However, it lacked archaeological integrity because of the highly eroded skeletal soils on this landscape.

¹ Available from: <https://www.gunlake.com.au/gunlake-quarries-environmental-information/>



KEY

- | | |
|---|--|
| Site boundary | Aboriginal site area |
| Continuation project disturbance area | AHIMS record |
| Major road | ● Open artefact site |
| Minor road | ● Isolated find |
| Vehicular track | ● Isolated find with PAD |
| Contour (10 m interval) | ● Modified tree |
| — Named watercourse | ● Open artefact site with PAD |
| Waterbody | ● PAD |

Proposed Continuation Project layout and aboriginal heritage context

Gunlake Quarry Continuation Project
Project information and
aboriginal cultural heritage matters
Figure 1

2.2 Aboriginal heritage management plan

EMM prepared the Gunlake Quarry Aboriginal Heritage Management Plan (AHMP), which was approved by the Secretary of DPIE on 14 April 2018. The AHMP was updated in March 2020 to include the outcomes of salvage measures implemented in June 2018. The AHMP documents procedures for the management of Aboriginal heritage values. The AHMP covers the Quarry site boundary (as shown in Figure 1) and consolidates management measures for the initial Quarry area, the Quarry extension area and a portion of Ambrose Road. The Continuation Project falls wholly within the area to which the AHMP applies.

In June 2018, EMM and RAPs conducted a salvage collection of Aboriginal stone artefacts within the disturbance footprint of the Quarry extension project in accordance within Section 5 of the AHMP. Collection was completed at sites GL5EXT; GL6; GL7; GL8; GL9; GL14a,b,c,d; GL10; and GL11 (AHMP Figure 5.1).

3 Continuation Project impact assessment

As detailed in Section 1.3 of this document, the Continuation Project activities will not introduce additional ground disturbance activities with the potential to harm Aboriginal objects with the exception of a small area of the previously approved disturbance area within Project Approval 07-0074 which Gunlake is now seeking to re-include within the Continuation Project boundary (Figure 1 – refer to Project Approval 07-0074 disturbance Area 1) as this was an oversight in the Extension Project Approval.

The landscape context of this area comprises a portion of a broad hill crest and upper hill slope with a south-westerly aspect. The area is between 300 m and 400 m of Chapmans Creek (3rd order stream) and over 200 m north of an unnamed ephemeral tributary. The area has porphyritic geology and thin sandy loam soils on crests and upper slopes, which are characteristic of the land within the Quarry site boundary. It shares similar landscape characteristics to crests and upper landforms in the broader site boundary.

Similar landscape contexts within the Quarry site boundary have evidence of concentrated stone artefact scatters on hill crests and upper slopes (refer site G14 on Figure 1) and lower density scatters and isolated finds on foot slopes and adjacent creek banks. Importantly, previous test excavation on crest landforms within the Quarry extension area indicate minimal subsurface archaeological deposits, as erosional processes have left most of archaeological material on the ground surface (EMM 2016, p.69). Therefore, there is potential for Aboriginal stone artefacts to occur on the ground surface in low to moderate densities, but they are unlikely to occur as subsurface deposits. Ground disturbance in the undisturbed portion of the disturbance area approved by Project Approval 07-0074 has the potential to impact Aboriginal objects if they are present. EMM predict that any stone artefacts in this area would represent Aboriginal objects of low to moderate archaeological significance, and that disturbance of these artefacts (if present) could be mitigated through surface collection (see below) in accordance with the AHMP.

The Continuation Project does not have potential to impact Aboriginal objects outside of the disturbance area approved by Project Approval 07-0074 disturbance area because no ground disturbance beyond this is proposed by the Continuation Project.

4 Proposed management measures

It is proposed that Area 1 is managed in accordance with the AHMP, including the Aboriginal site management and new finds procedures.

5 What's next?

We look forward to receiving any response your party wishes to make about the assessment letter and proposed management measures. Your response will be documented and considered as part of the assessment. Please remember to respond prior to 26 August 2021.

6 Any questions or information?

Please feel free to contact me with any questions or queries about the project via email (provided below) or telephone on 0411 329 712.

Yours sincerely,



Ryan Desic

Associate Archaeologist - Heritage Team Leader

rdesic@emmconsulting.com.au

References

AASC (Australian Archaeological Survey Consultants) 2007, *Proposed hard rock quarry Marulan NSW: Preliminary archaeological assessment*. Prepared by AASC for Gunlake Quarries Pty Ltd.

CHMA (Cultural Heritage Management Australia) 2008, *Gunlake Aboriginal Heritage Management Plan*. Prepared by CHMA for Gunlake Quarries Pty Ltd.

- 2014, Gunlake Quarry, Marulan, NSW, Modification to Quarry Pit and Overburden Emplacement, Aboriginal Cultural Heritage Assessment. Prepared by CHMA for Gunlake Quarries Pty Ltd.

EMM (EMM Consulting Pty Limited) 2016, *Gunlake Quarry Extension Project Aboriginal cultural heritage assessment, including the results of an archaeological test excavation*. Prepared by EMM for Gunlake Quarries Pty Ltd.

EMM 2020, *Gunlake Quarry Aboriginal Heritage Management Plan*, Project Approval 07-0074 and Development Consent SSD 709, prepared for Gunlake Quarries Pty Limited 21 March 2020 (revised version from original 2018 version).

From: Glen Freeman <GulgunyaNHAC@hotmail.com>

Sent: Tuesday, 3 August 2021 3:23 PM

To: Ryan Desic <rdesic@emmconsulting.com.au>

Subject: Re: Gunlake Quarry Continuation Project: Project information and Aboriginal cultural heritage matters

CAUTION: This email originated outside of the Organisation.

Hi Ryan,

Hope all is well, after reading the report I have no objections to the proposal of the Continuation Project for Gunlake Quarry.

As all Cultural Heritage management measures have previously been met I have no issues with it in its new phase of operations.

Cheers,

Glen

Sent from [Outlook](#)

From: Ryan Desic <rdesic@emmconsulting.com.au>

Sent: Thursday, 29 July 2021 4:01 PM

To: 'pejar1@bigpond.com' <pejar1@bigpond.com>; 'walbell@bigpond.net.au' <walbell@bigpond.net.au>; 'ghal6522@bigpond.net.au' <ghal6522@bigpond.net.au>; 'ngunawalhac@gmail.com' <ngunawalhac@gmail.com>; 'gunjeewong@yahoo.com.au' <gunjeewong@yahoo.com.au>; 'KoomurriNAC@hotmail.com' <KoomurriNAC@hotmail.com>; 'corroboreecorp@bigpond.com' <corroboreecorp@bigpond.com>; 'murrabidgeemullangari@yahoo.com.au' <murrabidgeemullangari@yahoo.com.au>; 'Nundagurri@gmail.com' <Nundagurri@gmail.com>; 'Walbunja@gmail.com' <Walbunja@gmail.com>; 'bunjil.smith@gmail.com' <bunjil.smith@gmail.com>; 'dghoskinsmckenzie@gmail.com' <dghoskinsmckenzie@gmail.com>; 'wullunglb@gmail.com' <wullunglb@gmail.com>; 'baduchts@gmail.com' <baduchts@gmail.com>; 'yerramurra@gmail.com' <yerramurra@gmail.com>; 'merrigarn@yahoo.com.au' <merrigarn@yahoo.com.au>; 'GulgunyaNHAC@hotmail.com' <GulgunyaNHAC@hotmail.com>; 'thunderstonemg@gmail.com' <thunderstonemg@gmail.com>; 'murrumbul@gmail.com' <murrumbul@gmail.com>; 'wingikarachts@gmail.com' <wingikarachts@gmail.com>; 'bilingachts@gmail.com' <bilingachts@gmail.com>; 'munyungachts@gmail.com' <munyungachts@gmail.com>; 'karrialchts@gmail.com' <karrialchts@gmail.com>; 'eorachts@gmail.com' <eorachts@gmail.com>; 'gangangarra@gmail.com' <gangangarra@gmail.com>; 'wandandianchts@gmail.com' <wandandianchts@gmail.com>; 'ngunawalchts@gmail.com' <ngunawalchts@gmail.com>; 'duncanfalk@hotmail.com' <duncanfalk@hotmail.com>; b.mturrise@bigpond.com.au <b.mturrise@bigpond.com.au>

Cc: Phil Towler <ptowler@emmconsulting.com.au>

Subject: Gunlake Quarry Continuation Project: Project information and Aboriginal cultural heritage matters

Dear Registered Party,

Thank you for your continued participation in the Gunlake Quarry project at 715 Brayton Road, Marulan NSW. The attached document provides information about the proposed Gunlake Quarry Continuation project and how it will relate to Aboriginal cultural heritage assessment and management.

EMM Consulting Pty Limited has prepared this letter to the Quarry registered Aboriginal parties (RAPs) to:

- provide an overview of the Continuation Project and its approval pathway;
- provide an Aboriginal heritage background relating to the Quarry;
- assess the potential impacts on Aboriginal heritage of the Continuation Project; and
- propose appropriate Aboriginal cultural heritage management measures for RAP review and comments prior to finalisation and the submission of an environmental impact statement (EIS) to the Department of Planning, Industry and Environment (DPIE).

We welcome your written feedback at your earliest opportunity, and no later than **26 August 2021**.

Letters

attached to email is the preferred mode of written communication as it will reduce postal waiting periods.

Regards,

Ryan Desic

Associate Archaeologist – Heritage Team Leader
Bushfire, Ecology, Heritage and Spatial Solutions (BEHSS)



T 02 9493 9500
M 0411 329 712
D 02 9493 9541
in Connect with us

NEWCASTLE | Level 3, 175 Scott Street, Newcastle NSW 2300



[Please consider the environment before printing my email.](#)

This email and any files transmitted with it are confidential and are only to be read or used by the intended recipient as it may contain confidential information. Confidentiality or privilege is not waived or lost by erroneous transmission. If you have received this email in error, or are not the intended recipient, please notify the sender immediately and delete this email from your computer. You must not disclose, distribute, copy or use the information herein if you are not the intended recipient.

From: Corroboree Aboriginal Corporation <corroboreecorp@bigpond.com>
Sent: Monday, 2 August 2021 12:29 PM
To: Ryan Desic <rdesic@emmconsulting.com.au>
Subject: Re: Gunlake Quarry Continuation Project: Project information and Aboriginal cultural heritage matters

CAUTION: This email originated outside of the Organisation.

Hi Ryan
We agree project info.

Kind regards
Marilyn Carroll-Johnson
Director
Corroboree Aboriginal Corporation
Mob: [0415911159](tel:0415911159)
Ph: [0288244324](tel:0288244324)
E: corroboreecorp@bigpond.com
Address: PO Box 3340
ROUSE HILL NSW 2155

On 29 Jul 2021, at 4:01 pm, Ryan Desic <rdesic@emmconsulting.com.au> wrote:

Dear Registered Party,

Thank you for your continued participation in the Gunlake Quarry project at 715 Brayton Road, Marulan NSW. The attached document provides information about the proposed Gunlake Quarry Continuation project and how it will relate to Aboriginal cultural heritage assessment and management.

EMM Consulting Pty Limited has prepared this letter to the Quarry registered Aboriginal parties (RAPs) to:

- provide an overview of the Continuation Project and its approval pathway;
- provide an Aboriginal heritage background relating to the Quarry;
- assess the potential impacts on Aboriginal heritage of the Continuation Project; and
- propose appropriate Aboriginal cultural heritage management measures for RAP review and comments prior to finalisation and the submission of an environmental impact statement (EIS) to the Department of Planning, Industry and Environment (DPIE).

We welcome your written feedback at your earliest opportunity, and no later than **26 August 2021**.

Letters

attached to email is the preferred mode of written communication as it will reduce postal waiting periods.

Regards,

Ryan Desic

Associate Archaeologist – Heritage Team Leader
Bushfire, Ecology, Heritage and Spatial Solutions (BEHSS)

<image001.png>

<image002.png>

T 02 9493 9500

M 0411 329 712

D 02 9493 9541

<image003.png>

Connect with us

NEWCASTLE | Level 3, 175 Scott Street, Newcastle NSW 2300

<image004.jpg>

Please consider the environment before printing my email.

This email and any files transmitted with it are confidential and are only to be read or used by the intended recipient as it may contain confidential information. Confidentiality or privilege is not waived or lost by erroneous transmission. If you have received this email in error, or are not the intended recipient, please notify the sender immediately and delete this email from your computer. You must not disclose, distribute, copy or use the information herein if you are not the intended recipient.

<J190263_AH_Consultation_Letter_29Jul21.pdf>

D.4 DAWE correspondence

From: Muhammad IQBAL <Muhammad.IQBAL@awe.gov.au>
Sent: Friday, 30 July 2021 4:14 PM
To: David Kelly <davidkelly@gunlake.com.au>
Cc: Post Approval <PostApproval@environment.gov.au>; Martin Paull <Martin.Paull@environment.gov.au>
Subject: RE: Gunlake Quarry – EPBC Approval 17 November 2017 (EPBC 2015/7557) [SEC=OFFICIAL]

Dear Mr Kelly

Thank you for your email regarding an existing EPBC approval for Gunlake Extension Project (EPBC 2017/7557). You also provided a copy of the scoping report for your new State Significant Development Application for the Gunlake Quarry Continuation Project SSD-12469087.

It is stated in your email, as well as in the scoping report, that the Continuation Project will not require clearance of any additional EPBC-listed vegetation, other than that for which offsets have previously been provided under the existing approval. As there are no additional significant impacts on the matters of national environmental significance, a new referral is not required. You will need to seek variation to the conditions of the existing approval to reflect the updated NSW Conditions of Consent, when they are issued, for the Gunlake Marulan Quarry Continuation Project.

Please contact the Post Approval area of the department to discuss the process to update conditions of the existing approval. You can contact them by email PostApproval@environment.gov.au (also copied in this email).

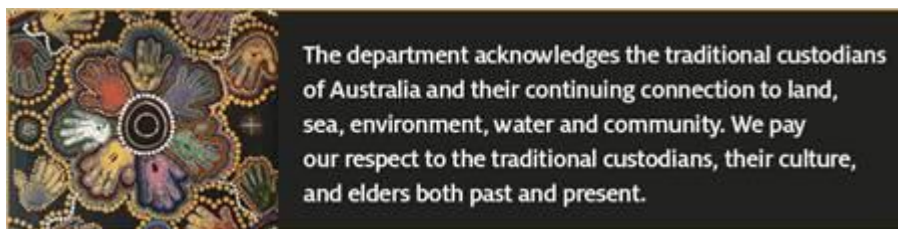
Please let me know if you have any questions.

Regards

Iqbal Muhammad *(Pronouns: he/him/his)*

Assistant Director | NSW Assessments South Section | 02 6274 2872
Department of Agriculture, Water and the Environment
Environment Assessments (NSW, ACT) Branch | Environmental Approvals Division
muhammad.iqbal@environment.gov.au
John Gorton Building, King Edward Terrace, Parkes ACT 2600 Australia
GPO Box 858 Canberra ACT 2601 Australia

awe.gov.au



From: Martin Paull <Martin.Paull@environment.gov.au>
Sent: Wednesday, 28 July 2021 10:18 AM
To: 'David Kelly' <davidkelly@gunlake.com.au>
Cc: Muhammad IQBAL <Muhammad.IQBAL@environment.gov.au>
Subject: RE: Gunlake Quarry – EPBC Approval 17 November 2017 (EPBC 2015/7557) [SEC=OFFICIAL]

Dear Mr Kelly

Thank you for your call and email yesterday.

We will review the Scoping Report and our current approval and email you accordingly. If you have any follow up queries regarding this matter, please contact Mr Muhammad Iqbal (Iqbal) copied into this email.

Regards
Martin Paull
Director, Southern NSW Assessments Section
Department of Agriculture, Water and the Environment
GPO Box 858
Canberra ACT 2601
0417 463 835
P(02) 6275 9397
martin.paull@awe.gov.au

From: David Kelly <davidkelly@gunlake.com.au>
Sent: Tuesday, 27 July 2021 3:48 PM
To: martin.paull@awe.gov.au
Subject: Gunlake Quarry – EPBC Approval 17 November 2017 (EPBC 2015/7557)

Dear Mr Paull,

Gunlake Quarry – EPBC Approval 17 November 2017 (EPBC 2015/7557)

We write to inform the Commonwealth Department of Agriculture, Water and Environment (**DAWE**) on developments at the Gunlake Quarry in Marulan, NSW in relation to the existing EPBC Approval for the quarry dated 17 November 2017 (EPBC 205/7557).

Gunlake is currently working on a new State Significant Development Application (SSD) for the quarry, through the NSW Department of Planning and Environment (DPIE) known as the Gunlake Quarry Continuation Project SSD-12469087.

Importantly the Continuation Project:

- Will not seek to clear any additional EPBC-listed native vegetation and therefore;
- The existing biodiversity offsets provided under existing approvals including the conditions in the current EPBC approval, will continue to apply.

We expect that should the Continuation Project be approved that any approval made will include a requirement to surrender the Extension Project Approval, within a necessary timeline. Once a determination has been made we propose that the existing EPBC Approval can be modified to reflect the updated set of conditions for the Gunlake Marulan Quarry Continuation Project. For example, all that may be required is a simple update to the definition of “NSW Conditions of Consent” to the new consent number and the cross references to the condition numbering in the NSW Conditions of Consent.

We do not believe that this requires any additional referral to DAWE or is a controlled action, different to that already stated in EPBC 205/7557, approval dated 17 November 2017, and that the current EPBC approval will continue to operate.

We have attached the Scoping report for the Gunlake Quarry Continuation Project and would welcome the opportunity to discuss this project with you at your convenience.

Regards,

Regards,

DAVID KELLY

Head of Development

GUNLAKE CONCRETE AND QUARRIES

m: + 61 437 545 732

e: davidkelly@gunlake.com.au

Concrete Orders: 1300 857 091

Marulan Quarry: (02) 4841 1344

Website: WWW.GUNLAKE.COM.AU



DISCLAIMER: This email and/or attachments are confidential and may also be privileged. If you are not the named recipient, please notify the sender immediately and do not disclose the contents to other persons or use it for any purpose or store or copy the information in any medium. Any views expressed in this message are those of the individual sender, except where the sender specifically states them to be the views of Gunlake NSW Pty Ltd.