

A W Edwards Pty Limited
Port Macquarie Office
7/35 Merrigal Road
Port Macquarie NSW 2444

info@asongroup.com.au
+61 2 9083 6601
Suite 17.02, Level 17,
1 Castlereagh Street,
Sydney, NSW 2000
ABN: 81 168 423 872

Attention: Craig McIlveen; Project Manager

RE: PCYC Hastings, Section 4.55 Modification # 2 (Section 4.55(2)) of the Approved SSDA-11920082 – Transport Statement

Dear Craig,

Ason Group has been engaged by AW Edwards to prepare a Transport Statement (TS) to support a Section 4.55 Modification #2 (S4.55(2)) application for the approved construction of new Police Citizens Youth Club (PCYC) as part of the approved upgrades to Hastings Secondary College – Port Macquarie Campus upgrades (the Proposal). The Proposal is located at 16 Owen Street, Port Macquarie (the Site).

Background

The Proposal pertains to Development Application (DA) number SSDA-11920082, which was approved for the following upgrades to Hastings Secondary College Port Macquarie Campus:

- demolition works
- upgraded school entry
- construction of a new two-storey Creative and Performing Arts (CAPA) building
- construction of a new Police Citizens Youth Club (PCYC) building
- construction of new Technological & Applied Studies (TAS) building
- partial refurbishment of Building L
- refurbishment and alteration to Building B
- removal of Building S
- refurbishment of Block T for General Learning & Staff Spaces
- removal of demountable buildings
- new lift connections, covered outdoor learning area (COLA) and covered walkways
- associated earthworks, landscaping, stormwater works and service upgrades
- tree removal and tree safety works
- regrade of existing driveway from Burrawan Street

The PCYC was approved with a basement carpark comprising the following spaces:

- 19 off-street spaces (including 2 accessible spaces)
- 2 spaces for minibus

The stamped plans are presented in **Figure 1**.

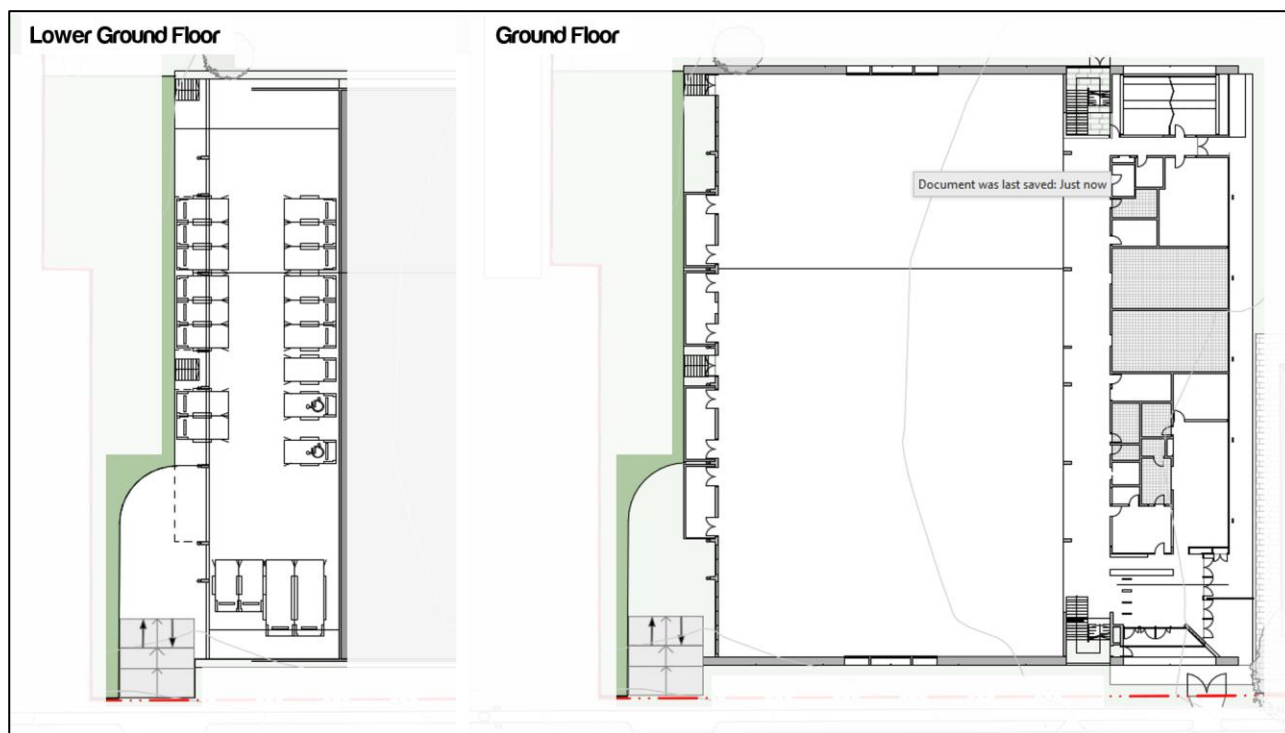


Figure 1: PCYC Facility (Approved Driveway and Basement Carpark Plan)

S4.55 Modification # 2 Scheme

This S4.55(2) application seeks to revise the basement carpark to an on-grade carpark to the rear of the PCYC building.

The operating characteristics, location of the driveway off Owen Street and the number of off-street parking provisions will be retained as part of the S4.55(2) application.

The proposed S4.55(2) plans are shown in **Figure 2**.

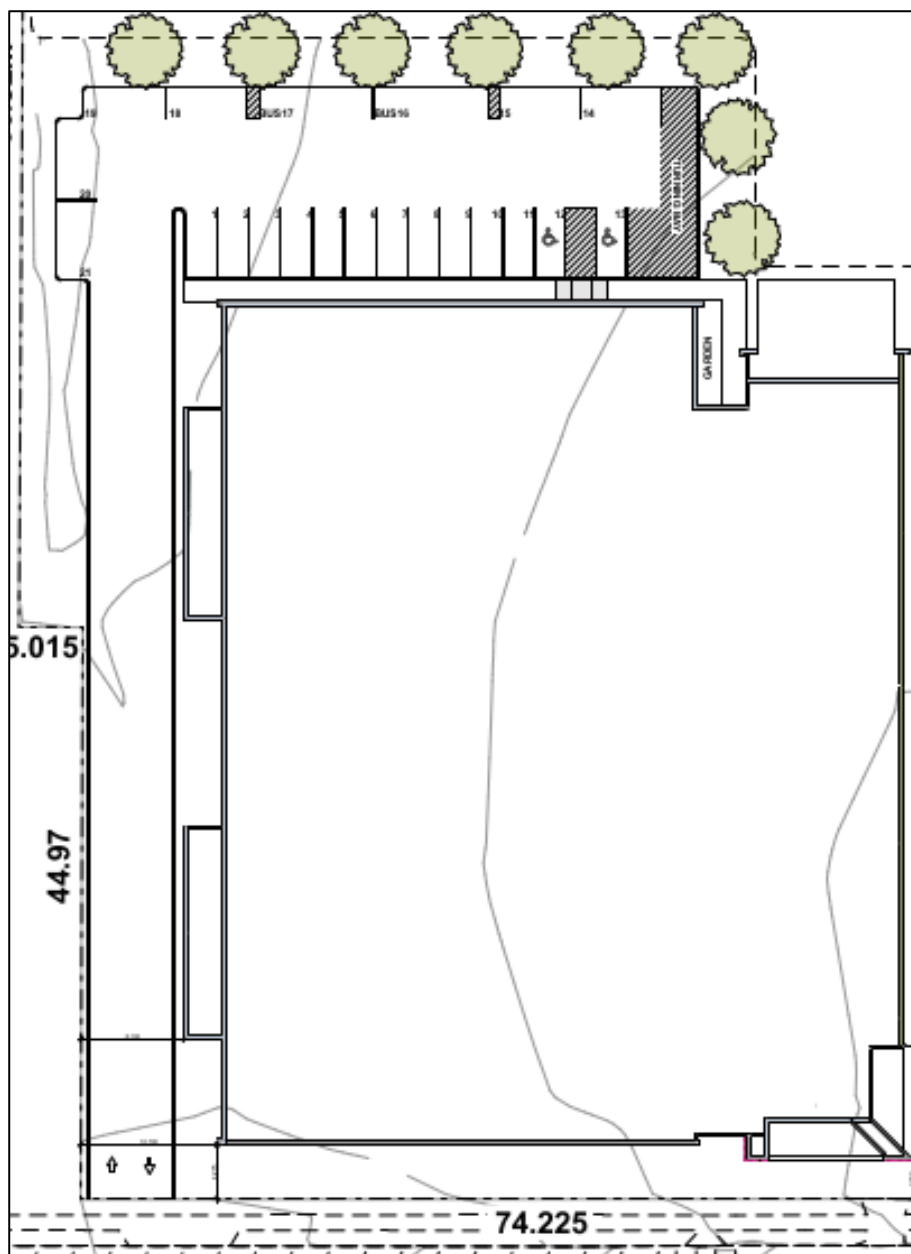


Figure 2: PCYC Facility (Proposed S4.55(2) Modification Driveway and At-Grade Carpark Plan)

Traffic Assessment

As discussed, this S4.55(2) application seeks to retain the operating characteristics of the proposed PCYC approved as part of the SSDA. As such, the traffic generation of the Proposal would be consistent with the traffic generation approved by the SSDA-approved scheme. The Proposal is therefore supported on traffic generation grounds.

Parking Assessment

The provision of 19 car and 2 minibus spaces are consistent with the approved SSDA scheme. The Proposal is therefore supported on parking grounds.

The loss of the 8 on-street parking spaces along Owen Street to accommodate sightlines between exiting drivers and vehicles on Owen Street, remains consistent with the existing SSDA approval.

Design Commentary

Access infrastructure and car park associated with this S4.55(2) have been designed with reference to the following Australian Standards:

- Australian Standard 2890.1:2004 – Parking Facilities – Off-Street Car Parking
- Australian Standard 2890.2:2018 – Parking Facilities – Off-Street Commercial Vehicle Facilities
- Australian Standard 2890.6:2009 – Parking Facilities – Off-Street Parking for People with Disabilities

It is expected that compliance with the above Standards would be expected to form a standard condition of consent to any development approval.

Furthermore, swept path assessment has been undertaken for B85 vehicles into the car spaces and minibus into the minibus spaces and the driveway is provided in **Attachment A**.

Conclusion

In summary, the proposed S4.55(2) is not expected to create adverse traffic and parking impacts on the Site and complies with the relevant Australian Standards. The proposed S4.55(2) is therefore supportable on traffic planning grounds.

We trust the above is of assistance and if you have any queries, please do not hesitate to contact the undersigned.

Yours sincerely,



Dora Choi

Principal Lead - Traffic Management & Operations

E: dora.choi@asongroup.com.au

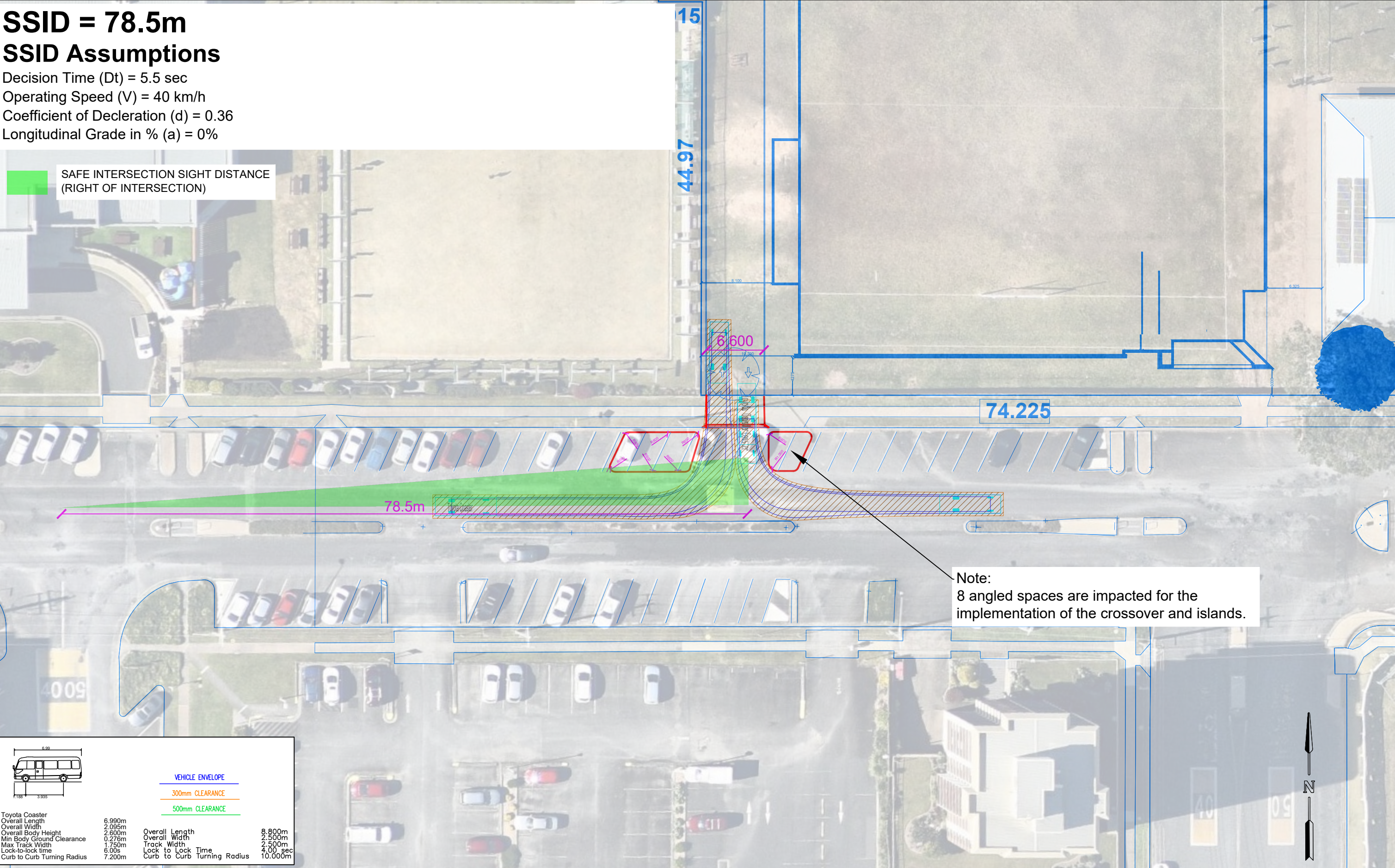
M: +61 450 923 889

Attachments:

- A) Swept path assessment

Attachment A

Swept Path Assessments



SSID = 78.5m
SSID Assumptions
Decision Time (Dt) = 5.5 sec
Operating Speed (V) = 40 km/h
Coefficient of Decleration (d) = 0.36
Longitudinal Grade in % (a) = 0%

SAFE INTERSECTION SIGHT DISTANCE
(RIGHT OF INTERSECTION)

VEHICLE ENVELOPE	
300mm CLEARANCE	
500mm CLEARANCE	
Toyota Coaster	
Overall Length	6.990m
Overall Width	2.095m
Overall Body Height	2.600m
Min Body Ground Clearance	0.276m
Max Track Width	1.750m
Lock-to-lock time	6.00s
Curb to Curb Turning Radius	7.200m
Overall Length	8.800m
Overall Width	2.500m
Track Width	2.500m
Lock to Lock Time	4.00 sec
Curb to Curb Turning Radius	10.000m

GENERAL NOTES

This drawing is provided for information purposes only and should not be used for construction.

Base Plan prepared by SHAQ, received 28/10/2022.

Swept path assessments completed at 5km/h (within off-street carpark) and 10km/h (entering and exiting the site) with 300mm clearance.

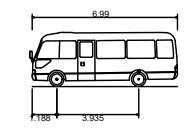
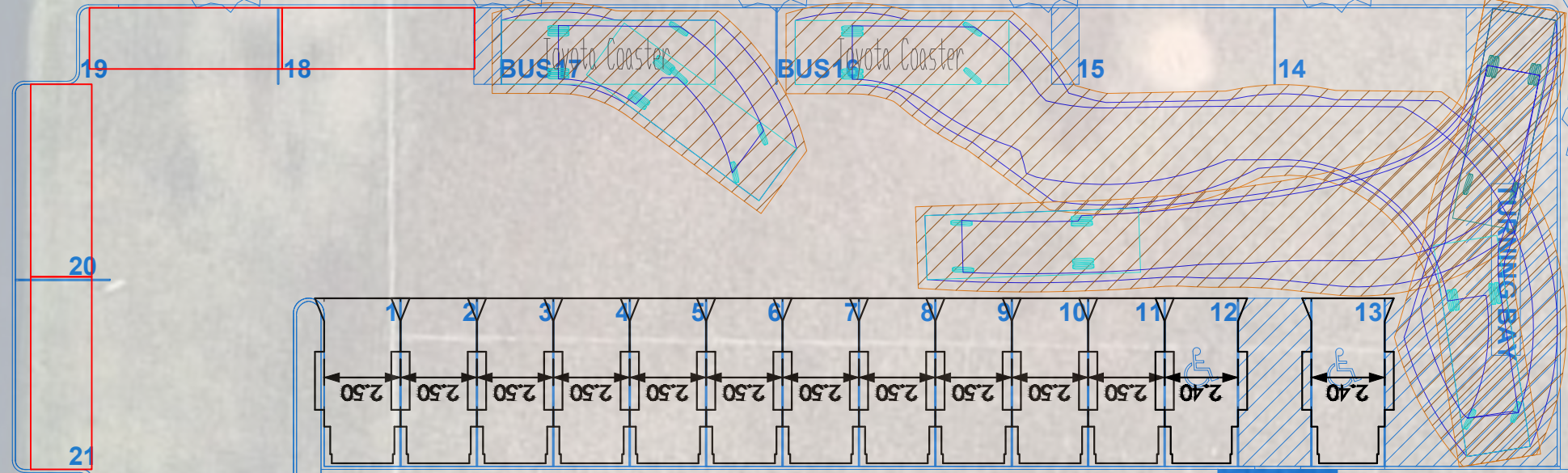
Design vehicle: 7m MINIBUS

DESIGNED Meg Kong	PAPER SIZE A3	CLIENT AW EDWARDS	DOCUMENT INFORMATION SWEPT PATH ASSESSMENT & COMPLIANCE REVIEW	
APPROVED BY -	DATE 21.10.2022	PROJECT P1600A	AMENDED CARPARK	
SCALE 1:400	0 10 20	Hastings Secondary College Port Macquarie Campus	FILE NAME AG1600A-03-v2.dwg	SHEET AG01

Suite 17.02, Level 17, 1 Castlereagh St
Sydney NSW 2000
info@asongroup.com.au

60.82m

PLAY SPACE 1,300.75 m²



VEHICLE ENVELOPE

- 300mm CLEARANCE
- 500mm CLEARANCE

Toyota Coaster			
Overall Length	6.990m	Overall Length	8.800m
Overall Width	2.095m	Overall Width	2.500m
Overall Body Height	2.600m	Track Width	2.500m
Min Body Ground Clearance	0.276m	Lock to Lock Time	4.00 sec
Max Track Width	1.750m	Curb to Curb Turning Radius	10.000m
Lock-to-lock time	6.00s		
Curb to Curb Turning Radius	7.200m		

GENERAL NOTES

This drawing is provided for information purposes only and should not be used for construction.

Base Plan prepared by SHAQ, received 28/10/2022.

Swept path assessments completed at 5km/h (within off-street carpark) and 10km/h (entering and exiting the site) with 300mm clearance.

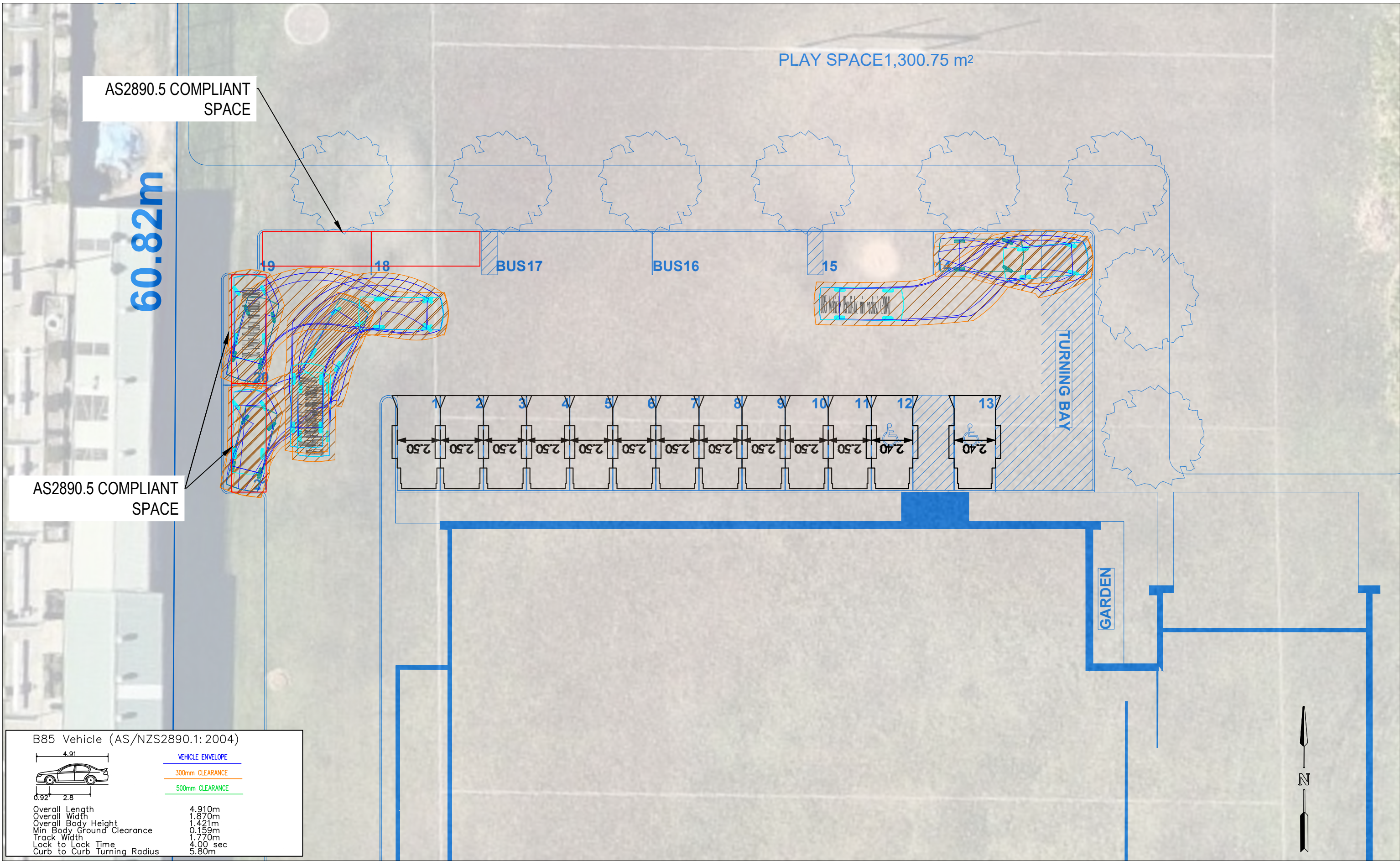
Design vehicle: 7m MINIBUS

DESIGNED Meg Kong	PAPER SIZE A3	CLIENT AW EDWARDS	DOCUMENT INFORMATION	
APPROVED BY -	DATE 21.10.2022	PROJECT P1600A Hastings Secondary College Port Macquarie Campus	SWEPT PATH ASSESSMENT & COMPLIANCE REVIEW	
SCALE 1:200	0 10 20		AMENDED CARPARK	
			FILE NAME AG1600A-03-v2.dwg	SHEET AG02

Suite 17.02, Level 17, 1 Castlereagh St
Sydney NSW 2000
info@asongroup.com.au

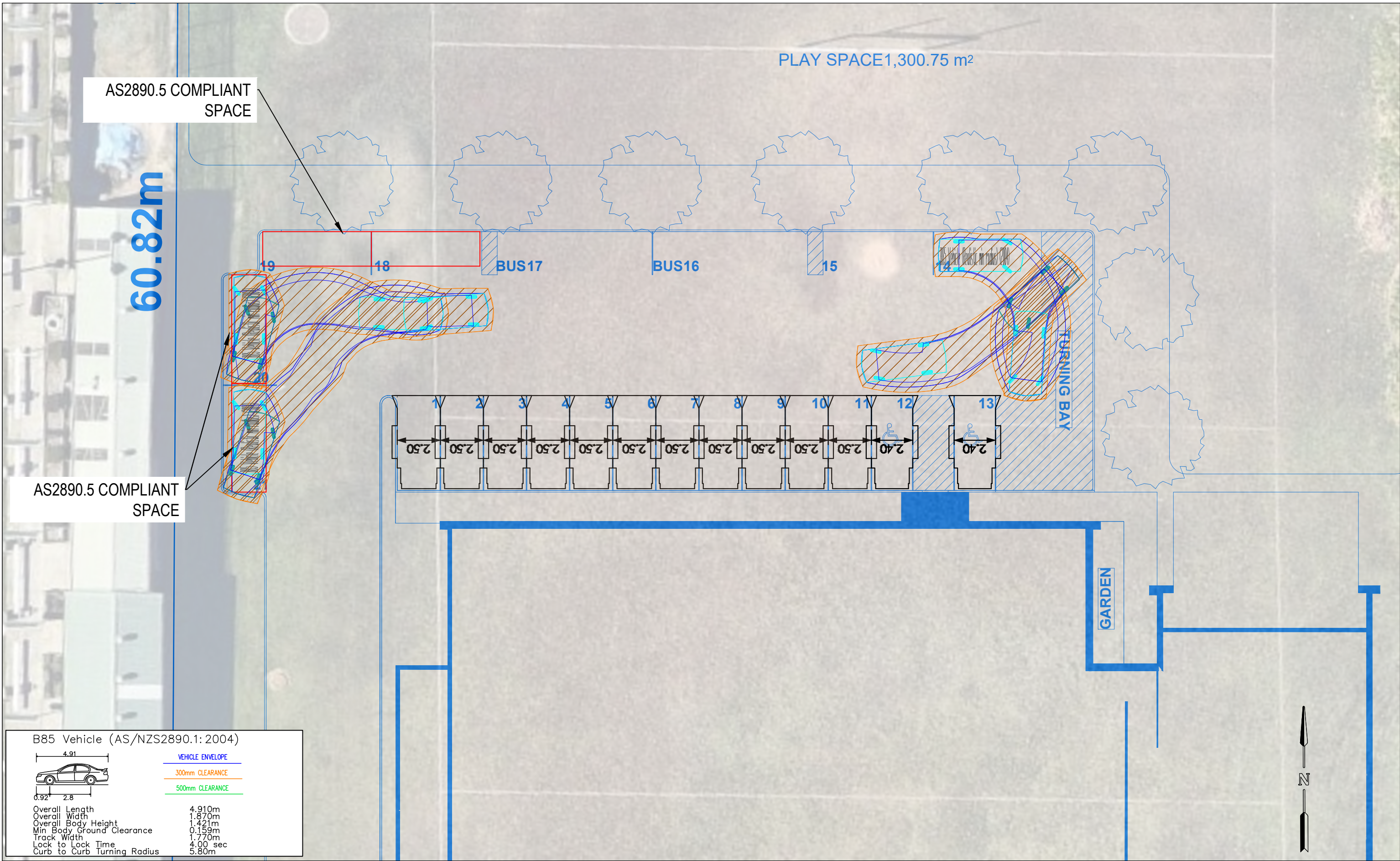
ASON ACCEPTS NO RESPONSIBILITY WHATSOEVER FOR THE USE OF UNAPPROVED PLANS IN ANY CONSTRUCTION OR FOR ANY COMMERCIAL PURPOSES. SET-OUT DIMENSIONS OF ALL DESIGN LINES, GRID LINES, CONTROL LINES, RECOVERY MARKS AND BENCH MARKS SHOULD BE VERIFIED AND CONFIRMED AGAINST THE LATEST INFORMATION AT CONSTRUCTION. ASION IS TO BE NOTIFIED IMMEDIATELY OF ANY ERROR OR DISCREPANCY AND THE MATTER RESOLVED PRIOR TO THE COMMENCEMENT OF CONSTRUCTION. ASION WILL NOT BE RESPONSIBLE FOR ANY DAMAGE, LOSS OR INJURY CAUSED BY THE FAILURE TO INFORM ANY SUCH THIRD PARTY OF THE LIMITATIONS WHICH APPLY TO THE INFORMATION CONTAINED IN THIS PLAN WITHIN THE ACCOMPANYING DATA.

AS/NZS2890.1:2004 COMPLIANT SPACE
PLAY SPACE 1,300.75 m²
60.82m
AS2890.5 COMPLIANT SPACE
TURNING BAY
GARDEN
B85 Vehicle (AS/NZS2890.1: 2004)
VEHICLE ENVELOPE
300mm CLEARANCE
500mm CLEARANCE
Overall Length 4.910m
Overall Width 1.870m
Overall Body Height 1.421m
Min. Body Ground Clearance 0.159m
Track Width 1.770m
Lock to Lock Time 4.00 sec
Curb to Curb Turning Radius 5.80m
DESIGNED Meg Kong
PAPER SIZE A3
CLIENT AW EDWARDS
PROJECT P1600A
Hastings Secondary College Port Macquarie Campus
DOCUMENT INFORMATION
SWEPT PATH ASSESSMENT & COMPLIANCE REVIEW
AMENDED CARPARK
FILE NAME AG1600A-03-v2.dwg
SHEET AG03
Suite 17.02, Level 17, 1 Castlereagh St
Sydney NSW 2000
info@asongroup.com.au
PLOT DATE: 2/11/2022 5:34:23 PM | CAD REFERENCE: C:\Users\Meg Kong\Documents\1600A\AG1600A-03-v2.dwg | Meg Kong |



GENERAL NOTES This drawing is provided for information purposes only and should not be used for construction. Base Plan prepared by SHAQ, received 28/10/2022. Swept path assessments completed at 5km/h (within off-street carpark) and 10km/h (entering and exiting the site) with 300mm clearance. Design vehicle: 7m MINIBUS	DESIGNED Meg Kong	PAPER SIZE A3	CLIENT AW EDWARDS	DOCUMENT INFORMATION SWEPT PATH ASSESSMENT & COMPLIANCE REVIEW	
	APPROVED BY -	DATE 21.10.2022	PROJECT P1600A	AMENDED CARPARK	
	SCALE 1:200	0 10 20	Hastings Secondary College Port Macquarie Campus	FILE NAME AG1600A-03-v2.dwg	SHEET AG03
					Suite 17.02, Level 17, 1 Castlereagh St Sydney NSW 2000 info@asongroup.com.au

AS/NZS2890.1:2004 COMPLIANCE CERTIFICATE
REPRODUCTION OF THIS PLAN OR ANY PART OF IT WITHOUT THE WRITTEN PERMISSION OF ASONGROUP IS PROHIBITED. THE INFORMATION CONTAINED IN THIS PLAN IS FOR INFORMATION PURPOSES ONLY AND SHOULD NOT BE USED FOR CONSTRUCTION. AS/NZS2890.1:2004 COMPLIANCE CERTIFICATE
DISCLAIMER: ASONGROUP ACCEPTS NO LIABILITY FOR ANY LOSS OR DAMAGE ARISING FROM THE USE OF THIS PLAN OR ANY PART OF IT WITHOUT THE WRITTEN PERMISSION OF ASONGROUP. THE INFORMATION CONTAINED IN THIS PLAN IS FOR INFORMATION PURPOSES ONLY AND SHOULD NOT BE USED FOR CONSTRUCTION. AS/NZS2890.1:2004 COMPLIANCE CERTIFICATE



GENERAL NOTES

This drawing is provided for information purposes only and should not be used for construction.

Base Plan prepared by SHAQ, received 28/10/2022.

Swept path assessments completed at 5km/h (within off-street carpark) and 10km/h (entering and exiting the site) with 300mm clearance.

Design vehicle: 7m MINIBUS

DESIGNED	PAPER SIZE	CLIENT
Meg Kong	A3	AW EDWARDS
APPROVED BY	DATE	PROJECT
-	21.10.2022	P1600A
SCALE		Hastings Secondary College Port Macquarie Campus
1:200	0 10 20	

DOCUMENT INFORMATION	
SWEPT PATH ASSESSMENT & COMPLIANCE REVIEW	
AMENDED CARPARK	
FILE NAME	SHEET
AG1600A-03-v2.dwg	AG04

Suite 17.02, Level 17, 1 Castlereagh St
Sydney NSW 2000
info@asongroup.com.au