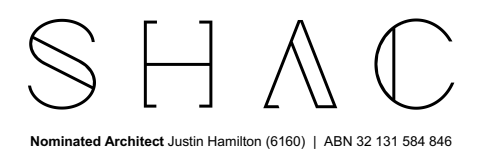


1. Dimensions are in millimetres unless otherwise shown.
2. Work to given dimensions. Do not scale from drawing.
3. Check all dimensions on site prior to construction and fabrication.
4. Bring any discrepancies to the attention of the proprietor & architect.

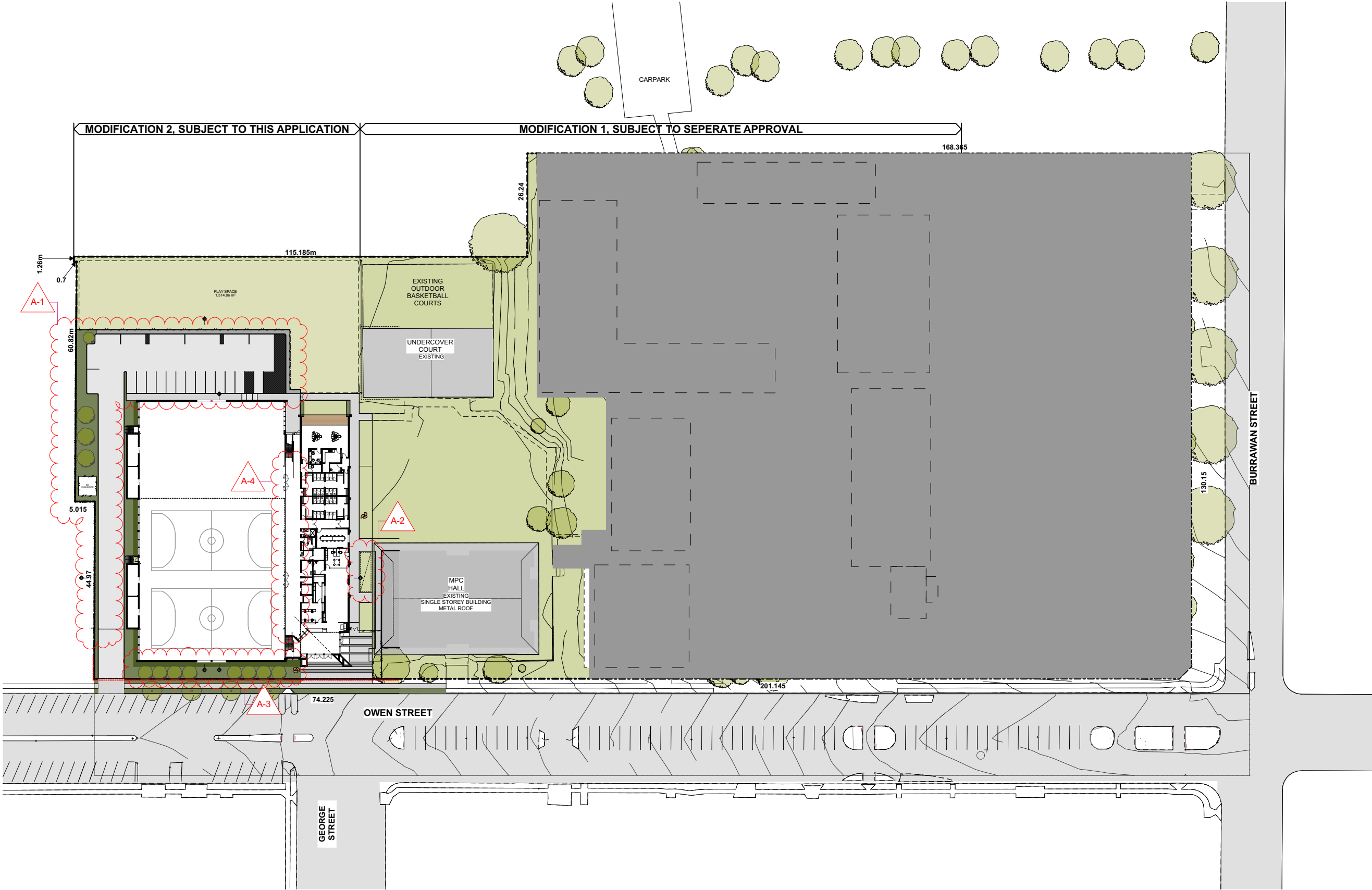


SITE PLAN PROPOSED

PORT MACQUARIE-HASTINGS PCYC
HASTINGS SECONDARY COLLEGE



1. Dimensions are in millimetres unless otherwise shown.
2. Work to given dimensions. Do not scale from drawing.
3. Check all dimensions on site prior to construction and fabrication.
4. Bring any discrepancies to the attention of the proprietor & architect.

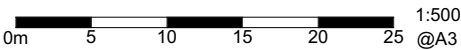


4662
1014

RevA 04.11.22

GENERAL ARRANGEMENT PLAN - SITE PLAN 2

PORT MACQUARIE-HASTINGS PCYC
HASTINGS SECONDARY COLLEGE

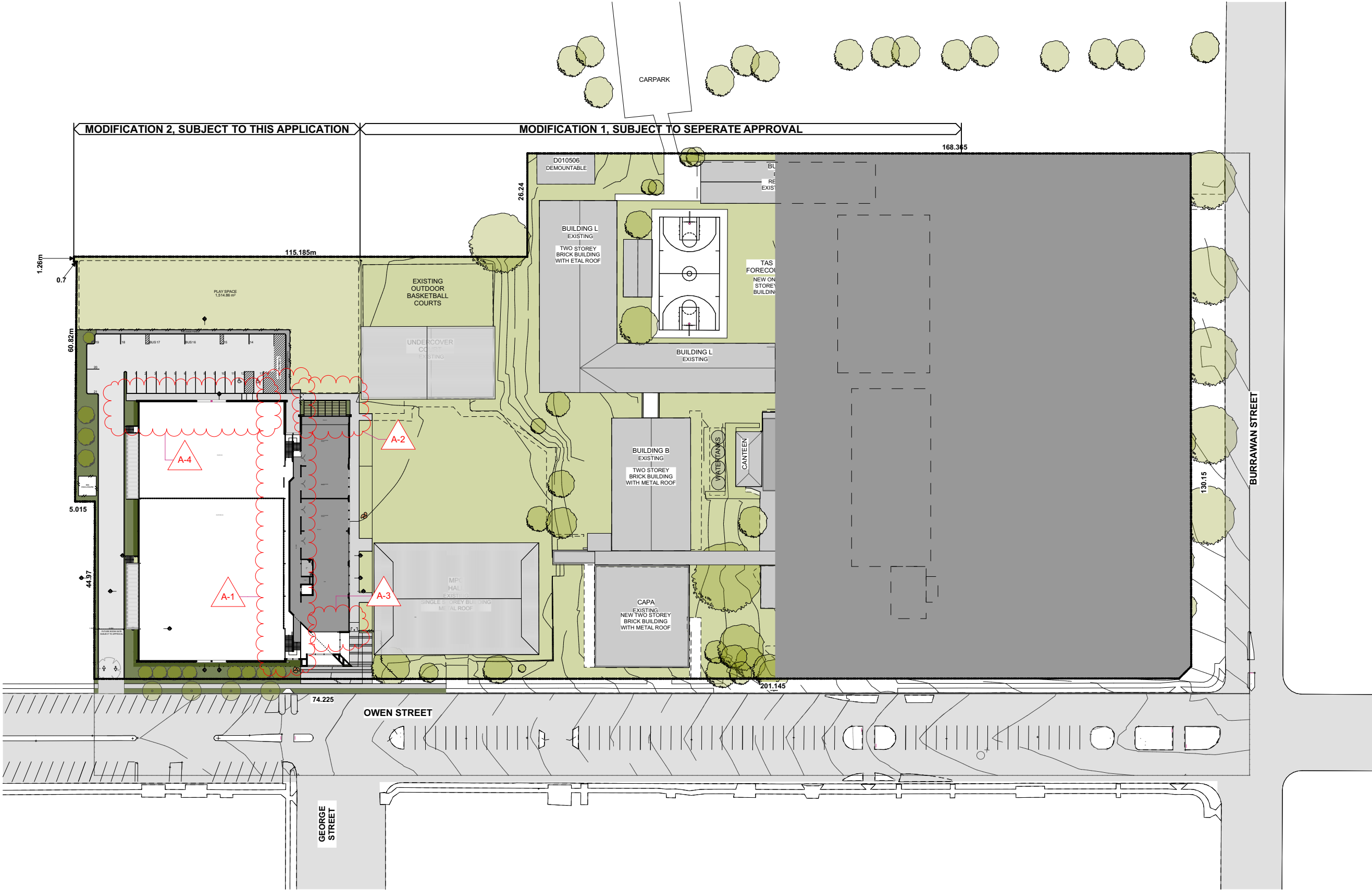


SHAC

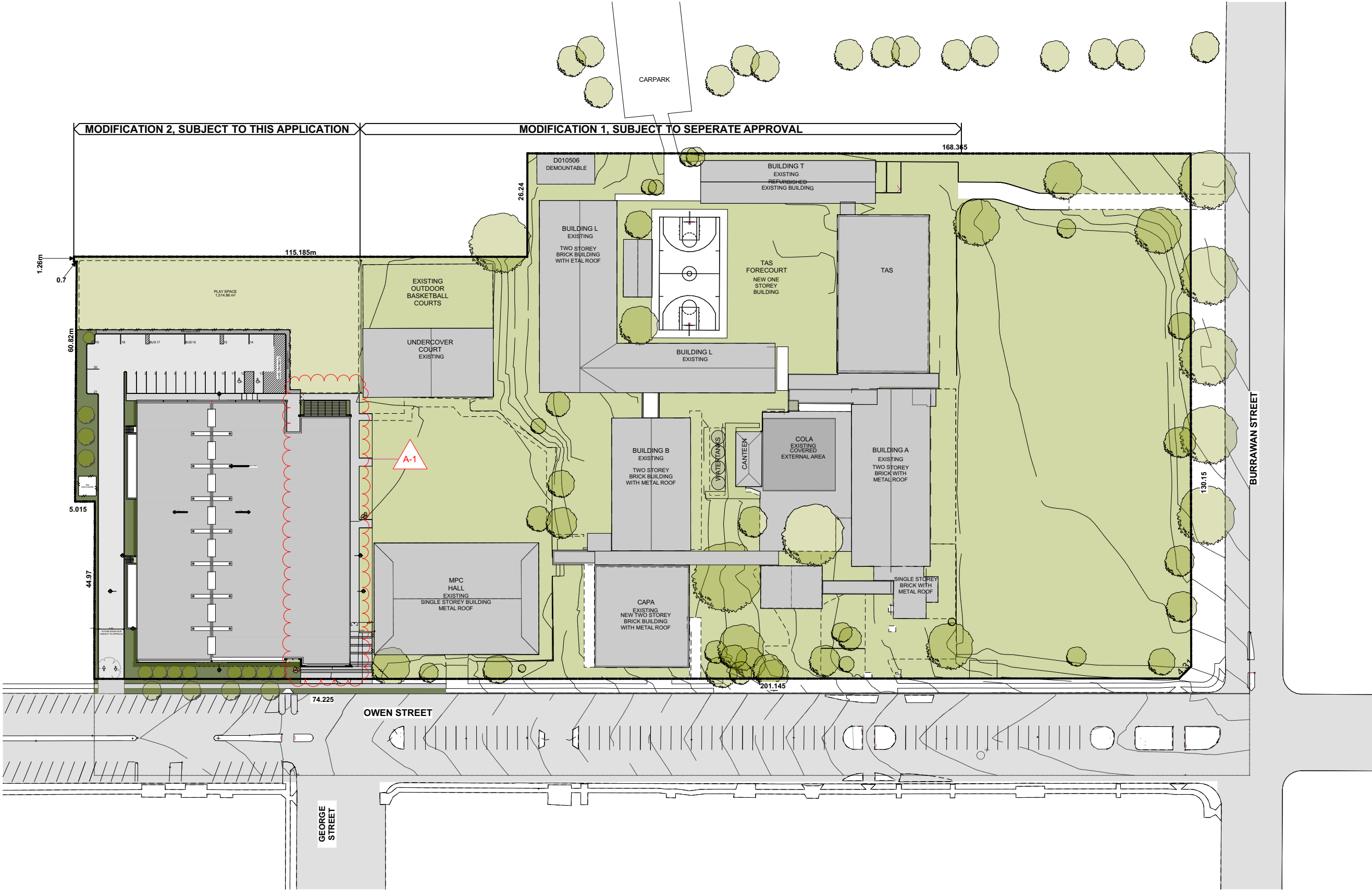
Nominated Architect Justin Hamilton (6160) | ABN 32 131 584 846

Drawing and design © SHAC Pty Ltd. The signed control copy of this drawing is held by SHAC Pty Ltd. | Ref: BIMcloud: BIMSERVER - BIMcloud Basic for ARCHICAD 25/4662 PCYC Hastings/4662/530.01 Hastings PCYC date:4/11/2022 time: 4:41 PM

1. Dimensions are in millimetres unless otherwise shown.
2. Work to given dimensions. Do not scale from drawing.
3. Check all dimensions on site prior to construction and fabrication.
4. Bring any discrepancies to the attention of the proprietor & architect.



1. Dimensions are in millimetres unless otherwise shown.
2. Work to given dimensions. Do not scale from drawing.
3. Check all dimensions on site prior to construction and fabrication.
4. Bring any discrepancies to the attention of the proprietor & architect.

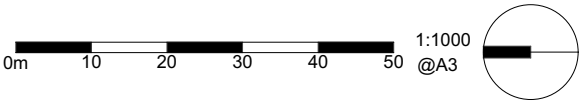


4662
1016

RevA 04.11.22

GENERAL ARRANGEMENT PLAN - SITE PLAN 4

PORT MACQUARIE-HASTINGS PCYC
HASTINGS SECONDARY COLLEGE



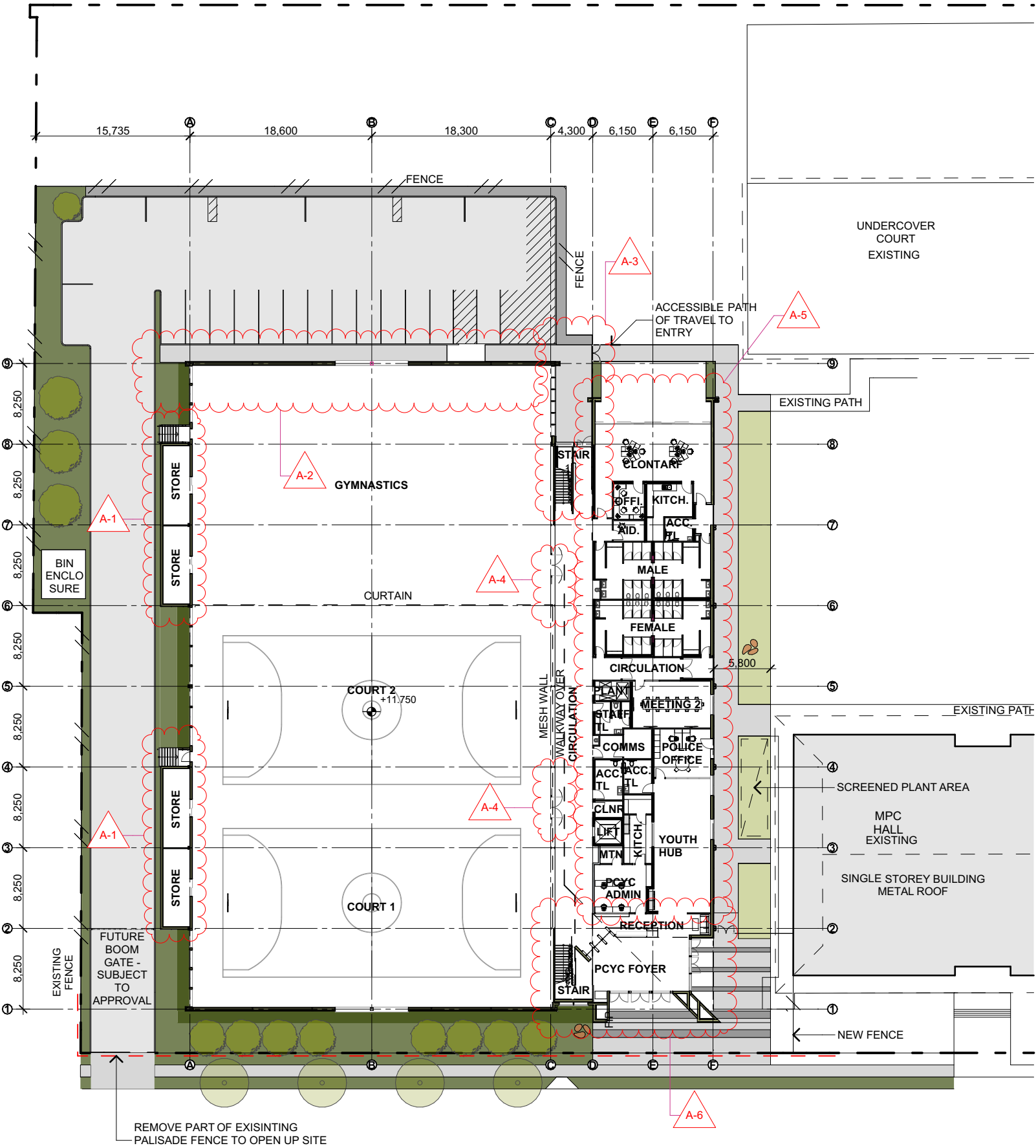
SHAC

Nominated Architect Justin Hamilton (6160) | ABN 32 131 584 846

1. Dimensions are in millimetres unless otherwise shown.

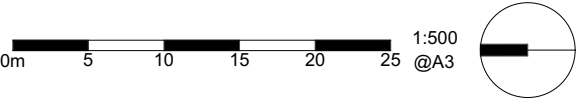
2. Work to given dimensions. Do not scale from drawing.
3. Check all dimensions on site prior to construction and fabrication.

4. Bring any discrepancies to the attention of the proprietor & architect.



4662
DA2207
RevA 04.11.22

General Arrangement Plan - PCYC Ground
PORT MACQUARIE-HASTINGS PCYC
HASTINGS SECONDARY COLLEGE

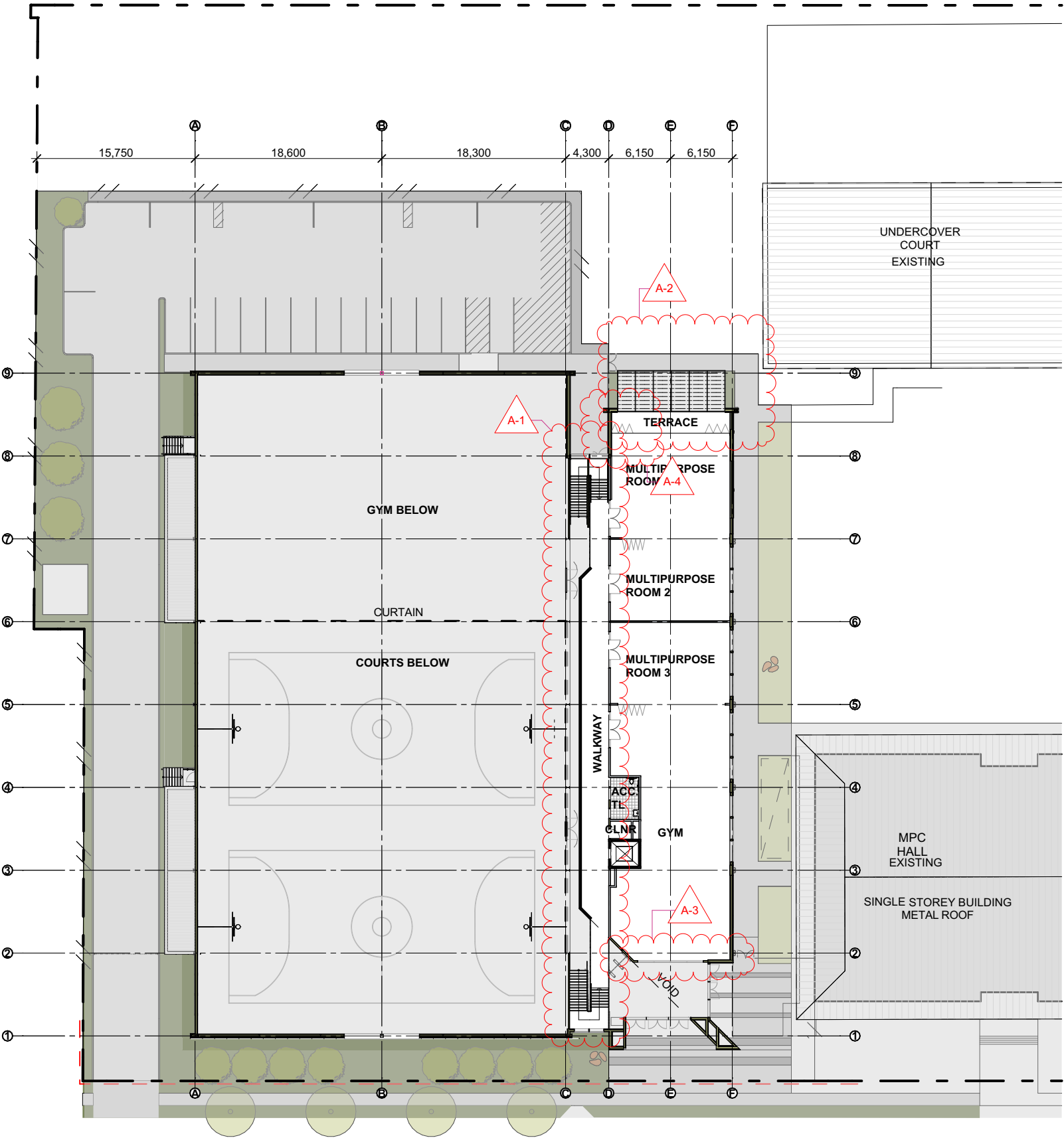


SHAC
Nominated Architect Justin Hamilton (6160) | ABN 32 131 584 846

1. Dimensions are in millimetres unless otherwise shown.

2. Work to given dimensions. Do not scale from drawing.
3. Check all dimensions on site prior to construction and fabrication.

4. Bring any discrepancies to the attention of the proprietor & architect.

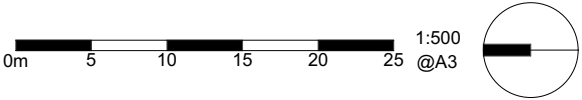
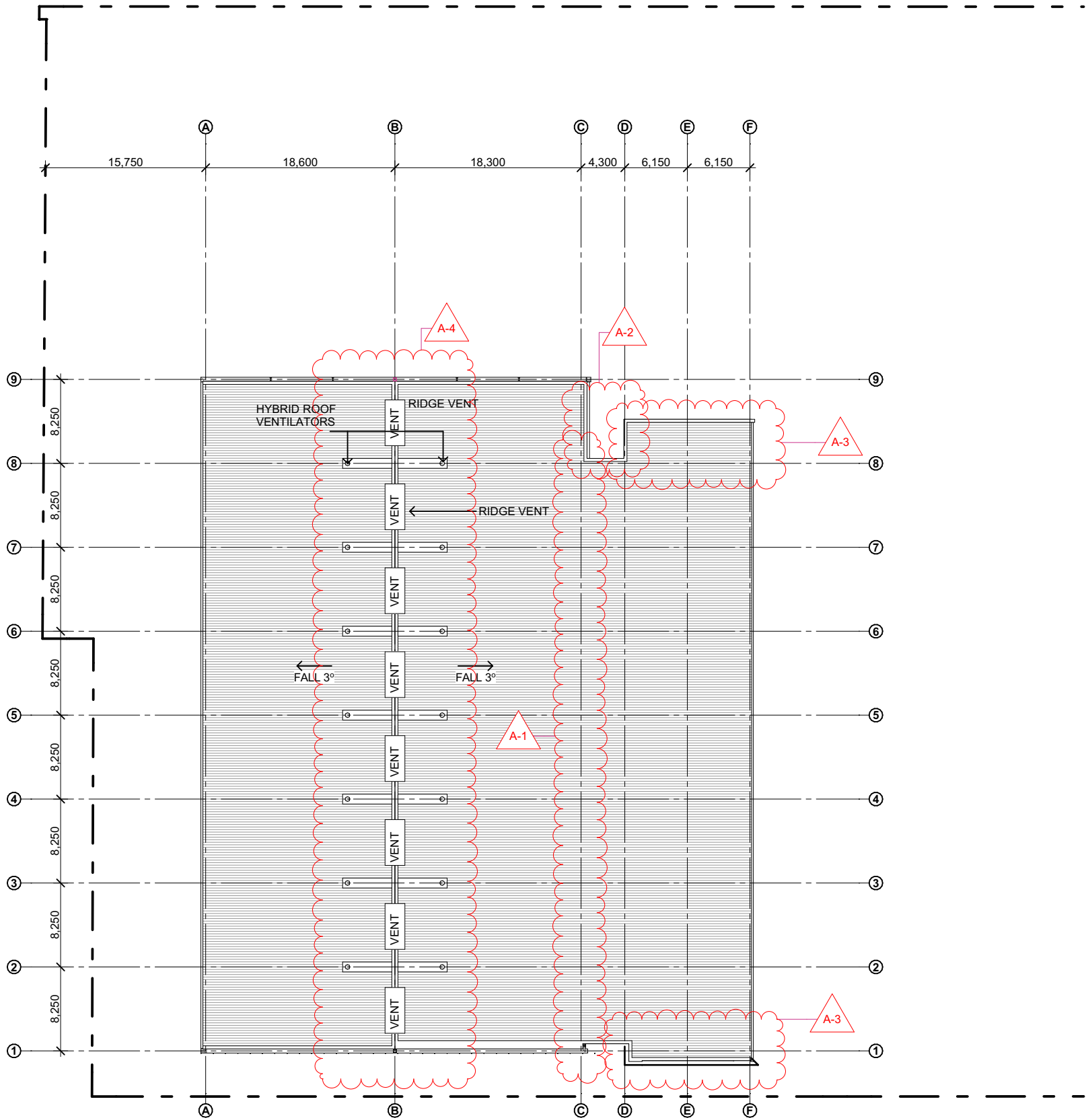


Drawing and design © SHAC Pty Ltd. The signed control copy of this drawing is held by SHAC Pty Ltd. | Ref: BIMcloud: BIMSERVER - BIMcloud Basic for ARCHICAD 25/4662 PCYC Hastings/4662/530.01 Hastings PCYC date:4/11/2022 time: 4:41 PM

1. Dimensions are in millimetres unless otherwise shown.

2. Work to given dimensions. Do not scale from drawing.
3. Check all dimensions on site prior to construction and fabrication.

4. Bring any discrepancies to the attention of the proprietor & architect.



SSDA MODIFICATION 2

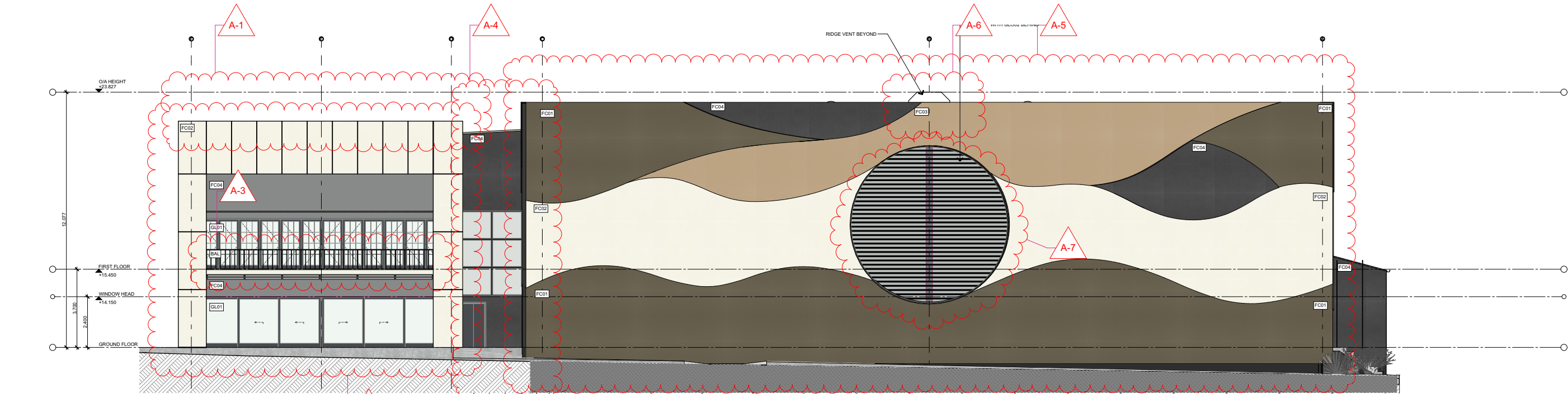
1. Dimensions are in millimetres unless otherwise shown.

2. Work to given dimensions. Do not scale from drawing.
3. Check all dimensions on site prior to construction and fabrication.

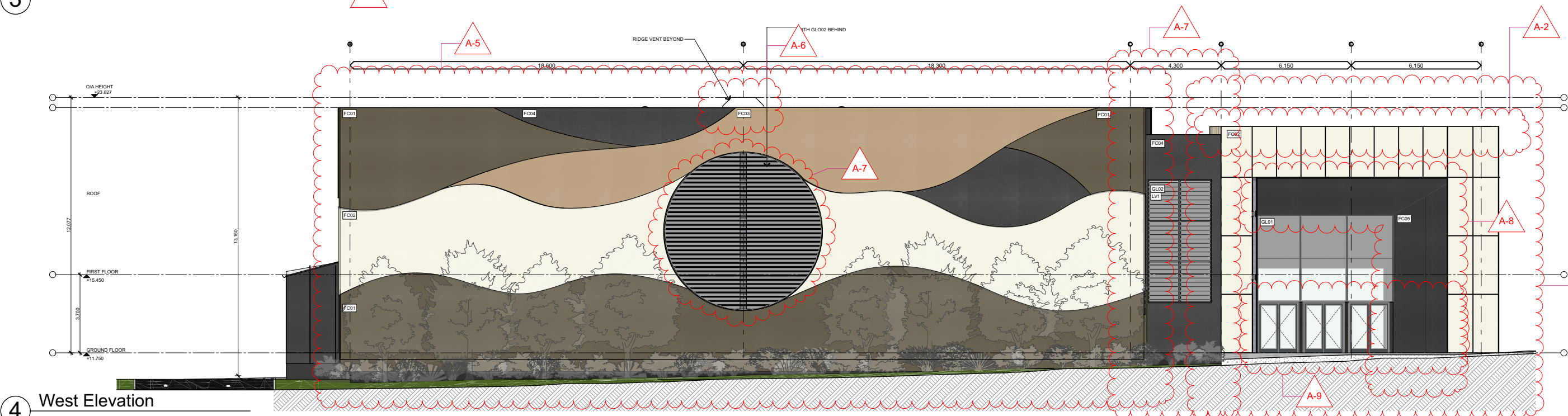
4. Bring any discrepancies to the attention of the proprietor & architect.

MATERIAL LEGEND

<div></div>	FC01 - CEMINTEL SURROUND WOODLOT	<div></div>	PF01 - DULUX CHARCOAL
<div></div>	FC02 - CEMINTEL SURROUND WHITEISH MARL	<div></div>	CMS01 - COLORBOND EVENING HAZE
<div></div>	FC03 - CEMINTEL SURROUND HUSK	<div></div>	CMS02 - COLORBOND MONUMENT
<div></div>	FC04 - CEMINTEL SURROUND BLACKISH MARL	<div></div>	CONCRETE PAVEMENT - REFER TO CIVIL ENGINEER DOCS
<div></div>	FC05 - CEMINTEL SURROUND BLACKOUT	<div></div>	LV1 - FIXED LOUVER SCREEN
		<div></div>	LV2 - GLAZED ALUMINIUM LOUVERS
		<div></div>	LV3 - ALUMINIUM LOUVERS
		<div></div>	GL01 - GLAZING CLEAR
		<div></div>	GL02 - GLAZING DARK
		<div></div>	BLW02- BLOCKWORK PAINTED
		<div></div>	BAL - BALUSTRADE



3 East Elevation



4 West Elevation

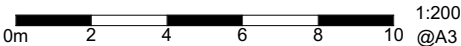
4662
DA3011

RevA 04.11.22

Elevations - PCYC East & West

PORT MACQUARIE-HASTINGS PCYC

HASTINGS SECONDARY COLLEGE



SHAC

Nominated Architect Justin Hamilton (6160) | ABN 32 131 584 846

SSDA MODIFICATION 2

1. Dimensions are in millimetres unless otherwise shown.

2. Work to given dimensions. Do not scale from drawing.
3. Check all dimensions on site prior to construction and fabrication.

4. Bring any discrepancies to the attention of the proprietor & architect.

MATERIAL LEGEND

<div></div>	FC01 - CEMINTEL SURROUND WOODLOT	<div></div>	PF01 - DULUX CHARCOAL
<div></div>	FC02 - CEMINTEL SURROUND WHITEISH MARL	<div></div>	CMS01 - COLORBOND EVENING HAZE
<div></div>	FC03 - CEMINTEL SURROUND HUSK	<div></div>	CMS02 - COLORBOND MONUMENT
<div></div>	FC04 - CEMINTEL SURROUND BLACKISH MARL	<div></div>	CONCRETE PAVEMENT - REFER TO CIVIL ENGINEER DOCS
<div></div>	FC05 - CEMINTEL SURROUND BLACKOUT	<div></div>	LV1 - FIXED LOUVER SCREEN
		<div></div>	LV2 - GLAZED ALUMINIUM LOUVERS
		<div></div>	LV3 - ALUMINIUM LOUVERS
		<div></div>	GL01 - GLAZING CLEAR
		<div></div>	GL02 - GLAZING DARK
		<div></div>	BLW02- BLOCKWORK PAINTED
		<div></div>	BAL - BALUSTRADE



4662
DA3012

Elevations - PCYC North & South
PORT MACQUARIE-HASTINGS PCYC
HASTINGS SECONDARY COLLEGE



SHAC

Nominated Architect Justin Hamilton (6160) | ABN 32 131 584 846

Drawn and design © SHAC Pty Ltd. The signed control copy of this drawing is held by SHAC Pty Ltd. | Ref: BIMcloud: BIMSERVER - BIMcloud Basic for ARCHICAD 25/4662 PCYC Hastings/4662.530.01 Hastings PCYC date:4/11/2022 time: 4:41 PM

SSDA MODIFICATION 2

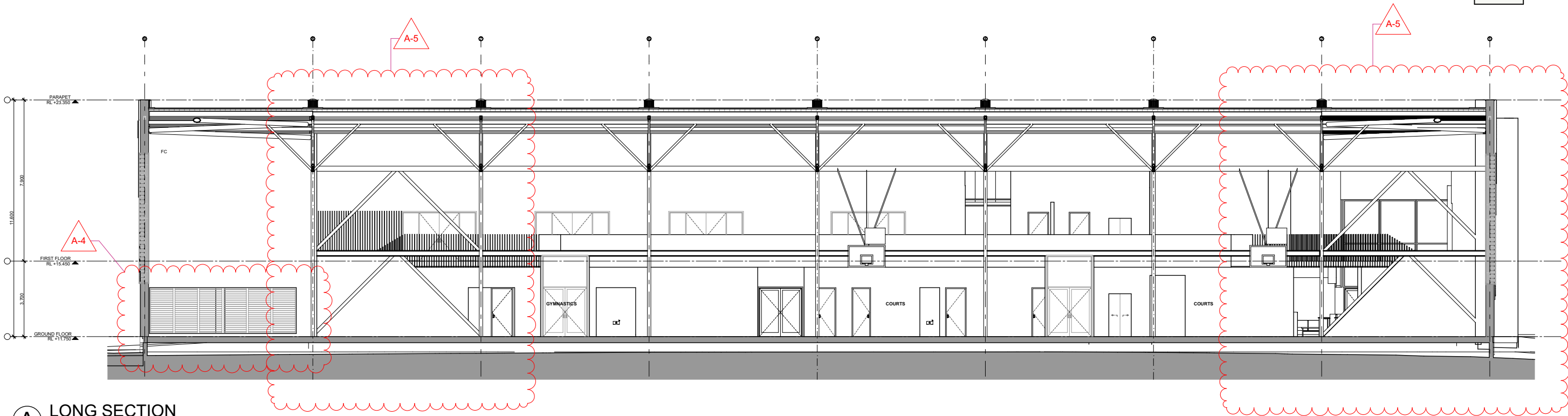
1. Dimensions are in millimetres unless otherwise shown.

2. Work to given dimensions. Do not scale from drawing.
3. Check all dimensions on site prior to construction and fabrication.

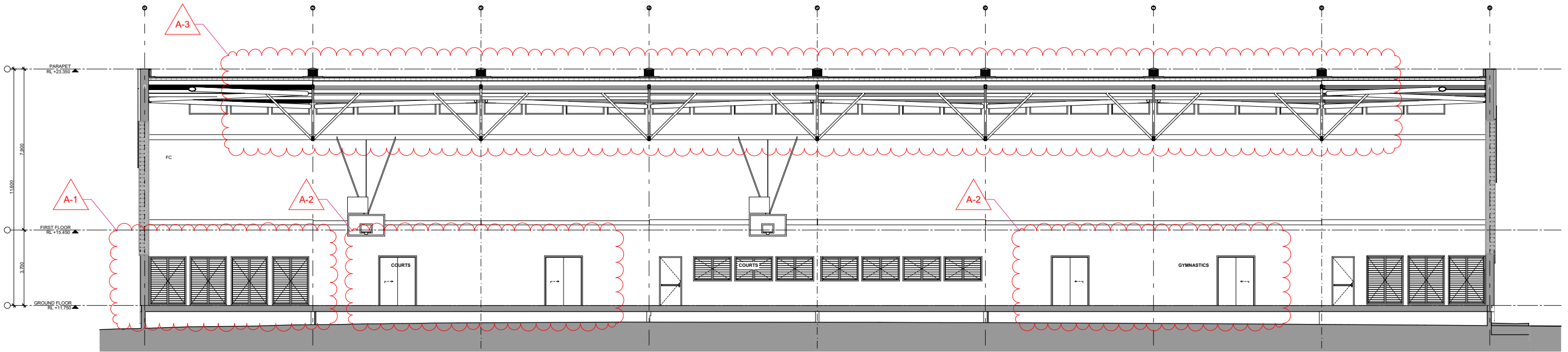
4. Bring any discrepancies to the attention of the proprietor & architect.

MATERIAL LEGEND

<div></div>	FC01 - CEMINTEL SURROUND WOODLOT	<div></div>	FC05 - CEMINTEL SURROUND BLACKOUT
<div></div>	FC02 - CEMINTEL SURROUND WHITEISH MARL	<div></div>	PF01 - DULUX CHARCOAL
<div></div>	FC03 - CEMINTEL SURROUND HUSK	<div></div>	MS01 - COLORBOND EVENING HAZE
<div></div>	FC04 - CEMINTEL SURROUND BLACKISH MARL	<div></div>	MS02 - COLORBOND MONUMENT
		<div></div>	CONCRETE PAVEMENT - REFER TO CIVIL ENGINEER DOCS



A LONG SECTION
SCALE 1:200

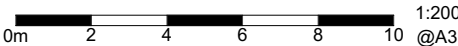


B LONG SECTION
SCALE 1:200

4662
DA3101

RevA 04.11.22

Sections - PCYC 1
PORT MACQUARIE-HASTINGS PCYC
HASTINGS SECONDARY COLLEGE



SHAC

Nominated Architect Justin Hamilton (6160) | ABN 32 131 584 846

Drawing and design © SHAC Pty Ltd. The signed control copy of this drawing is held by SHAC Pty Ltd. | Ref: BIMcloud: BIMSERVER - BIMcloud Basic for ARCHICAD 25/4662 PCYC Hastings/4662.530.01 Hastings PCYC date: 4/11/2022 time: 4:41 PM

Drawing and design © SHAC Pty Ltd. The signed control copy of this drawing is held by SHAC Pty Ltd. | Ref: BIMcloud: BIMSERVER - BIMcloud Basic for ARCHICAD 25/4662 PCYC | BIMcloud: BIMSERVER - BIMcloud Basic for ARCHICAD 25/4662 PCYC | Date: 4/11/2022 Time: 4:41 PM

SSDA MODIFICATION 2

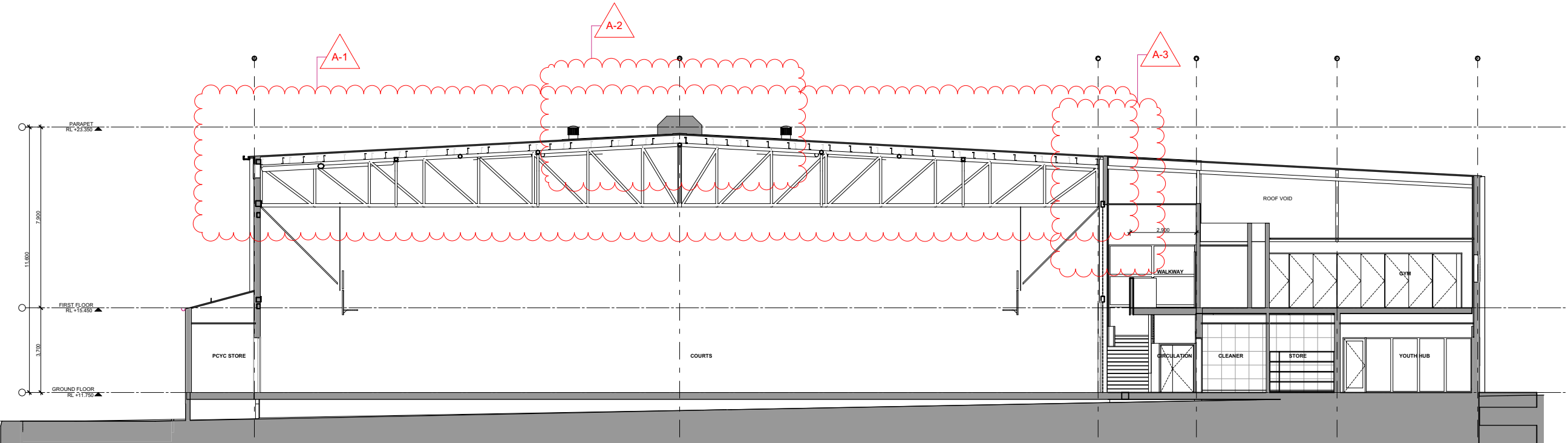
1. Dimensions are in millimetres unless otherwise shown.

2. Work to given dimensions. Do not scale from drawing.
3. Check all dimensions on site prior to construction and fabrication.

4. Bring any discrepancies to the attention of the proprietor & architect.

MATERIAL LEGEND

<div></div>	FC01 - CEMINTEL SURROUND WOODLOT	<div></div>	FC05 - CEMINTEL SURROUND BLACKOUT
<div></div>	FC02 - CEMINTEL SURROUND WHITEISH MARL	<div></div>	PF01 - DULUX CHARCOAL
<div></div>	FC03 - CEMINTEL SURROUND HUSK	<div></div>	MS01 - COLORBOND EVENING HAZE
<div></div>	FC04 - CEMINTEL SURROUND BLACKISH MARL	<div></div>	MS02 - COLORBOND MONUMENT
		<div></div>	CONCRETE PAVEMENT - REFER TO CIVIL ENGINEER DOCS



C CROSS SECTION
SCALE 1:200

Drawing and design © SHAC Pty Ltd. The signed control copy of this drawing is held by SHAC Pty Ltd. | Ref: BIMcloud: BIMSERVER - BIMcloud Basic for ARCHICAD 25/4662 PCYC Hastings/4662 530.01 Hastings PCYC date:4/11/2022 time: 4:41 PM

SSDA MODIFICATION 2

1. Dimensions are in millimetres unless otherwise shown.

2. Work to given dimensions. Do not scale from drawing.
3. Check all dimensions on site prior to construction and fabrication.

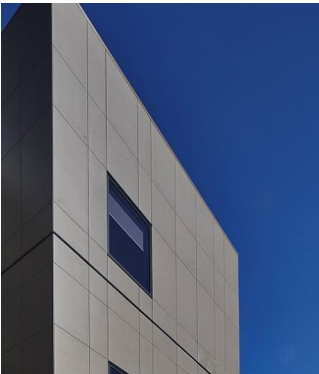
4. Bring any discrepancies to the attention of the proprietor & architect.



1



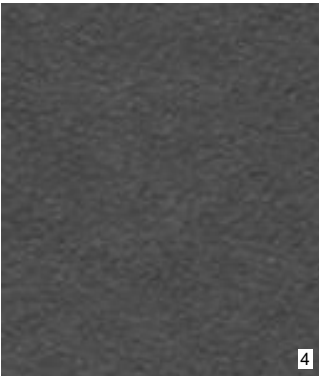
3



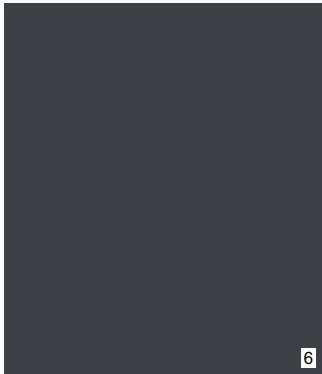
5



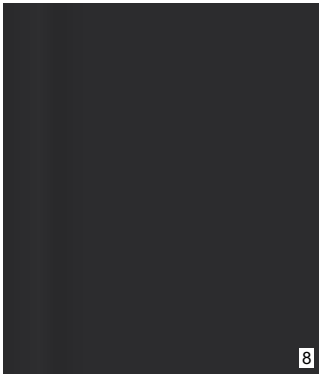
2



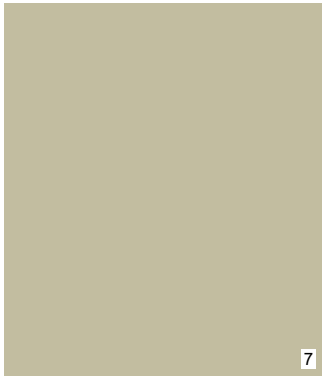
4



6



8



7



EXTERIOR MATERIAL LEGEND

1. FC01 -CEMINTEL SURROUND WOODLOT
2. FC02 - CEMINTEL SURROUND WHITEISH MARL
3. FC03 - CEMINTEL SURROUND HUSK
4. FC04 - CEMINTEL SURROUND BLACKISH MARL
5. FC05 - CEMINTEL SURROUND BLACKOUT
6. PCE01 / PFE01 - DULUX CHARCOAL
7. CMS01 - COLORBOND EVENING HAZE
8. CMS02 - COLORBOND MONUMENT

4662
DA9006
RevA 04.11.22

Exterior Finishes
PORT MACQUARIE-HASTINGS PCYC
HASTINGS SECONDARY COLLEGE

NTS
@A3

SHAC
Nominated Architect Justin Hamilton (6160) | ABN 32 131 584 846