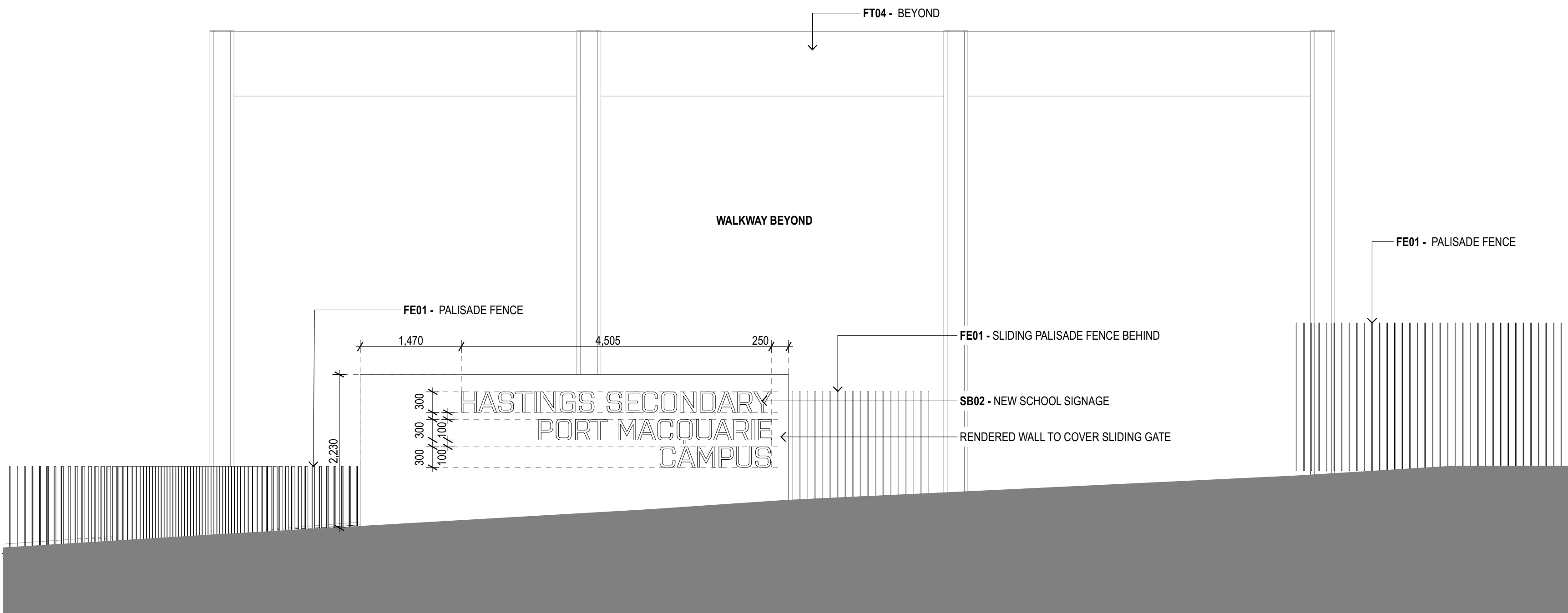
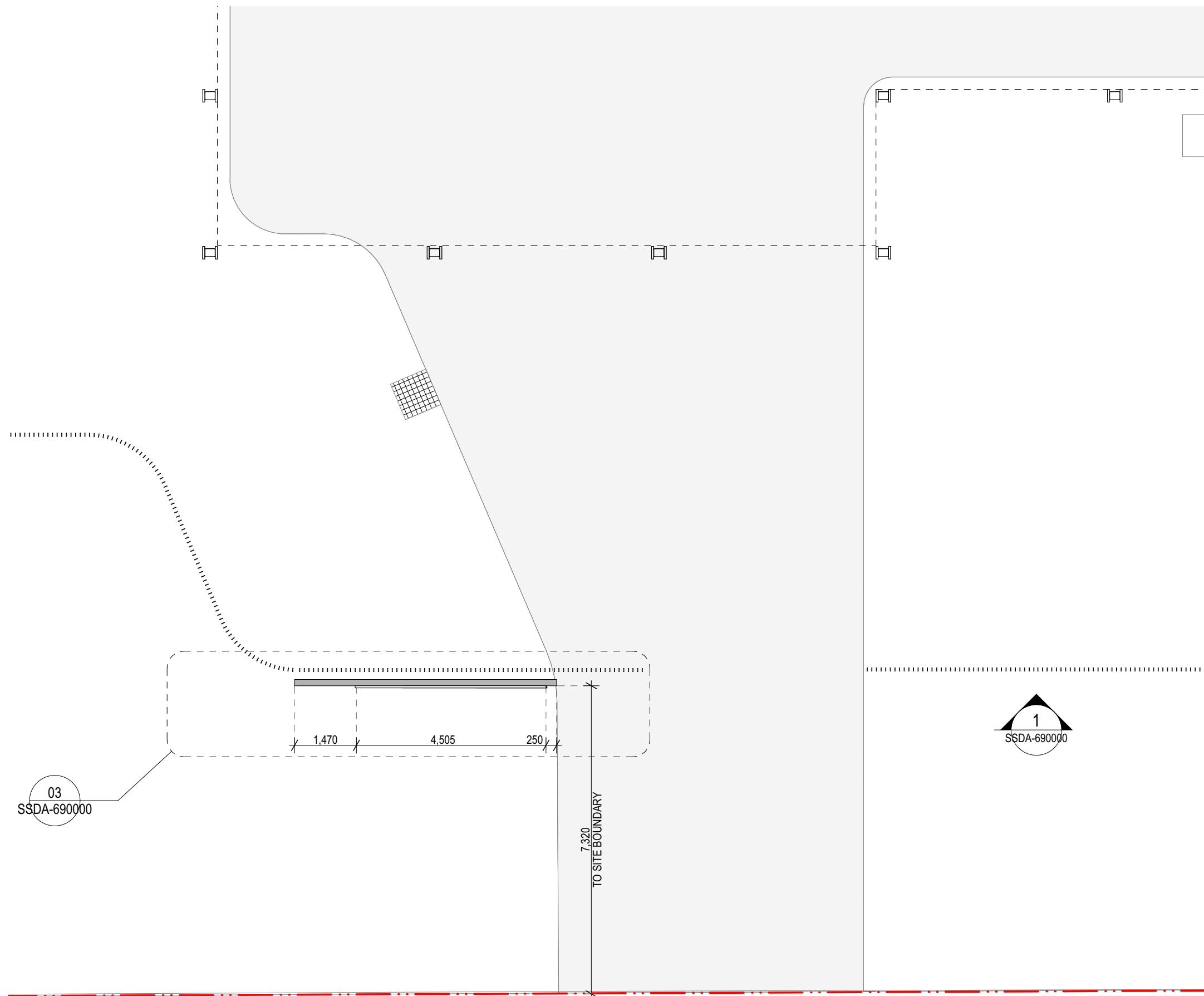


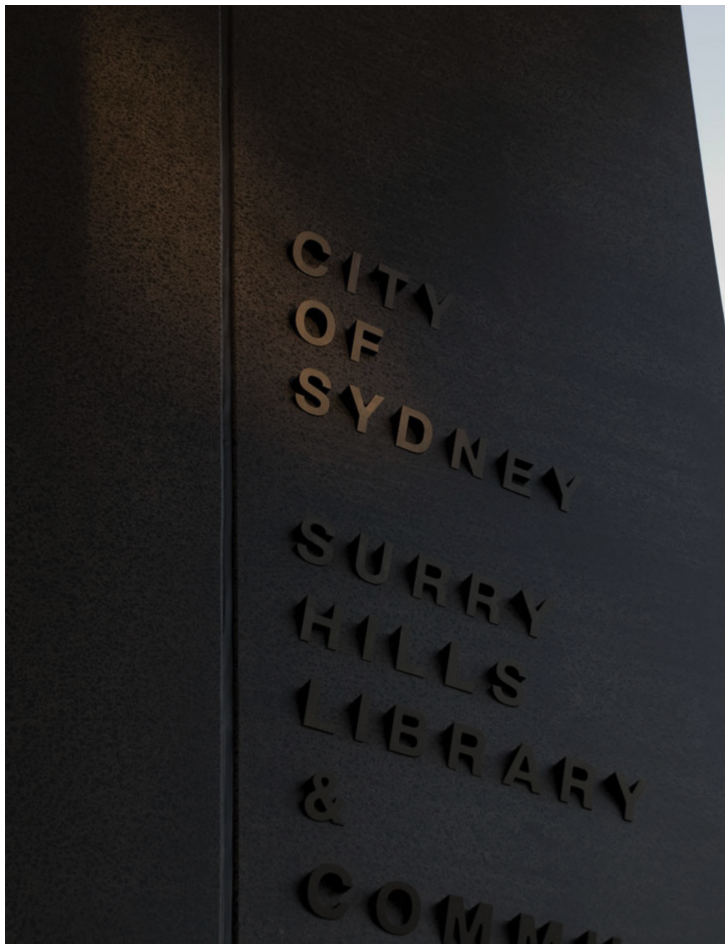
1 ELEVATION Entry Signage - Colour
1:50



2 ELEVATION Entry Signage - Black & white
1:50



3 PLAN Entry Signage Plan 1:50
1:100



4 PRECEDENT IMAGES



5 3D VIEW Signage Perspective

GENERAL NOTES

- ALL DIMENSIONS AND EXISTING CONDITIONS SHALL BE CHECKED AND VERIFIED BY THE CONTRACTOR BEFORE PROCEEDING WITH THE WORK.
- ALL LEVELS RELATIVE TO AUSTRALIAN HEIGHT DATUM.
- DO NOT SCALE DRAWINGS.
- USE FIGURED DIMENSIONS ONLY.

legend

04	14/4/21	SSDA	MJ	
03	26/3/21	SSDA	KT	
02	23/2/21	Draft SSDA 02	KT	
01	12/2/21	Draft SSDA	MJ	
rev	date	name	by	chk

fjmt studio architecture interiors landscape urban community
sydney melbourne uk
Level 5, 70 King Street t +61 2 9251 7077 w fjmtstudio.com

project
Hastings Schools Port Macquarie
Hastings Secondary College
Port Macquarie NSW 2444

title
Signage
Signage - School Main Entry

scale	first issued	12/2/21
project code	sheet no.	revision
HSPM	SSDA-690000	04

CAPA Building

- FT01

FACADE TYPE 01
BRICKWORK WALLS AND COLUMNS
- FT02

FACADE TYPE 02
PRE-FINISHED HIGH DENSITY FIBRE CEMENT PANELS WITH
INTEGRATED FLUSH GLAZED ALUMINIUM FRAMED PANEL
- FT03

FACADE TYPE 03
FULL HEIGHT TENSILE WEBNET FACADE WITH PAINTED STEEL
FIXING LOCATED BETWEEN BRICKWORK COLUMNS

- BWK 1

SOLDIER COURSE
BRICKWORK TYPE 01 - FACE
BRICK
- FT01

BWK 1
BRICKWORK TYPE 01 - FACE
BRICK
- FT03

FULL HEIGHT TENSILE WEBNET
FACADE WITH PAINTED STEEL
FIXING LOCATED BETWEEN
BRICKWORK COLUMNS
- FT02

CL01 CLADDING TYPE 01
PRE-FINISHED COLOUR
THROUGH
HIGH DENSITY FIBRE CEMENT
PANEL
- LV01

LOUVRE TYPE 01
TO BE CO ORDINATED WITH
MECHANICAL DOCUMENTATION
- FEN01

FENCE EXTERNAL SYSTEM
TYPE 01
METAL FENCE



01 3D VIEW CAPA- NORTH ELEVATION

- BWK 1

SOLDIER COURSE
BRICKWORK TYPE 01 - FACE
BRICK
- FT01

BWK 1
BRICKWORK TYPE 01 - FACE
BRICK
- FT02

CL01 CLADDING TYPE 01
PRE-FINISHED COLOUR
THROUGH
HIGH DENSITY FIBRE CEMENT
PANEL
- CL05

CLADDING TYPE 05
ALUMINIUM SHEET CLADDING
PORTAL WINDOW



02 3D VIEW CAPA - WEST ELEVATION

- BWK 1

SOLDIER COURSE
BRICKWORK TYPE 01 - FACE
BRICK
- FT01

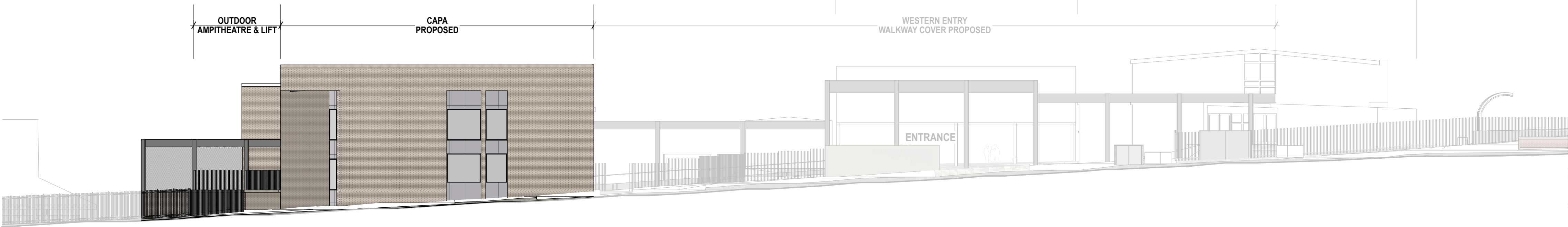
BWK 1
BRICKWORK TYPE 01 - FACE
BRICK
- FT02

CL01 CLADDING TYPE 01
PRE-FINISHED COLOUR
THROUGH
HIGH DENSITY FIBRE CEMENT
PANEL
- FEN01

FENCE EXTERNAL SYSTEM
TYPE 01
METAL FENCE



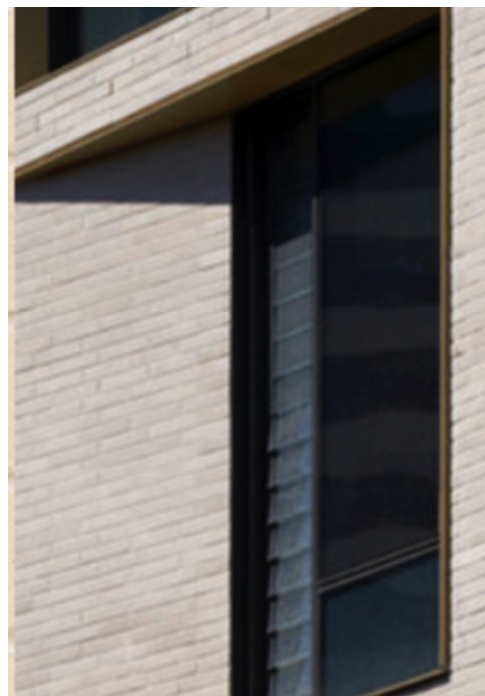
03 3D VIEW CAPA - SOUTH WEST ELEVATION



04 ELEVATION West Elevation (Owen Street South)
1:200



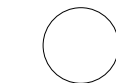
FT01



FT02



FT03



- GENERAL NOTES**
- ALL DIMENSIONS AND EXISTING CONDITIONS SHALL BE CHECKED AND VERIFIED BY THE CONTRACTOR BEFORE PROCEEDING WITH THE WORK.
 - ALL LEVELS RELATIVE TO 'AUSTRALIAN HEIGHT DATUM'.
 - DO NOT SCALE DRAWINGS.
 - USE FIGURED DIMENSIONS ONLY.

legend

REFER

SSDA-740000 EXTERIOR FINISHES SAMPLE BOARD

BWK1 BRICKWORK TYPE 1 - FACE BRICK
BW02 BLOCKWORK PAINTED
BWKX EXISTING FACE BRICK FACADE

GL01 GLAZING - CLEAR
GL02 GLAZING - DARK

CL01 EQUITONE CLADDING DARK
CL02 CORRUGATED CLADDING DARK
CL03 FIBRE CEMENT - PAINTED LIGHT
CL04 ACCIDULATED TREATED TIMBER
CL05 ALUMINIUM SHEET CLADDING DARK

CEL42 EQUITONE (FIBRE CEMENT) CLADDING SOFFIT
FT03 HIGH TENSILE MESH AND INTEGRATED
FT04 PAINTED STEEL COLUMN WITH ACCOYA CLADDING

LV01 EXTERNAL ALUMINIUM LOUVRES
LV02 EXTERNAL GLAZED AUTOMATED LOUVRES
PF30 PAINTED STEEL

ROF01 CORRUGATED ROOF CLADDING LIGHT

02	14/4/21	SSDA	MJ
01	26/3/21	SSDA	KT
rev	date	name	by chk

fjmt studio architecture interiors landscape urban community
sydney melbourne uk
Level 5, 70 King Street t +61 2 9251 7077 w fjmtstudio.com



project
Hastings Schools Port Macquarie
Hastings Secondary College
Port Macquarie NSW 2444

title
Facade Types
Facade - CAPA

scale	first issued	26/3/21
project code	sheet no.	revision
HSPM	SSDA-702010	02

BUILDING L

Existing brickwork for Building L is proposed to be retained. All existing brickwork, pointing, concrete feature elements, metal drainage elements and the like are to be retained, repaired and made good to existing where required.

- BWKX

EXISTING BRICK FACADE
- FT02

FACADE TYPE 02
PRE-FINISHED HIGH DENSITY FIBRE CEMENT PANELS WITH
INTEGRATED FLUSH GLAZED ALUMINIUM FRAMED GLAZING



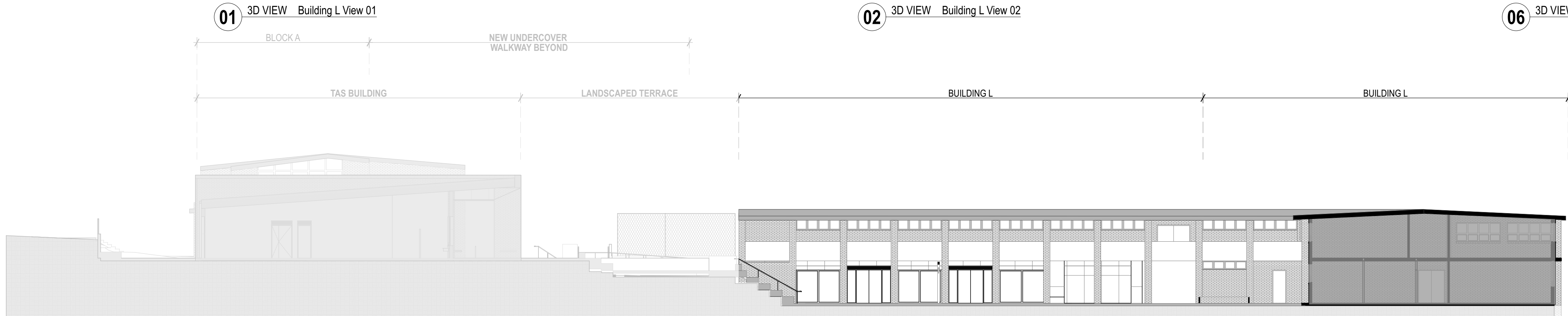
01 3D VIEW Building L View 01



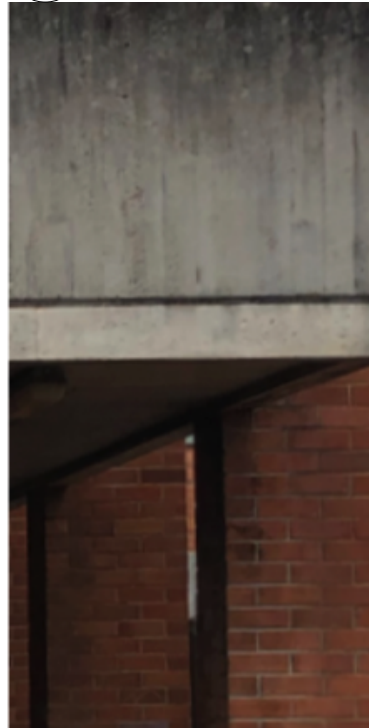
02 3D VIEW Building L View 02



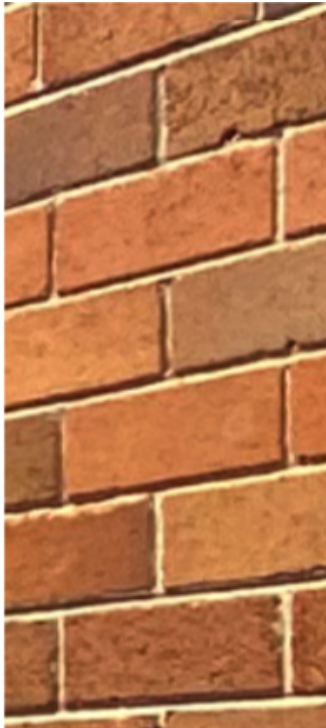
06 3D VIEW Building L Building B bridge



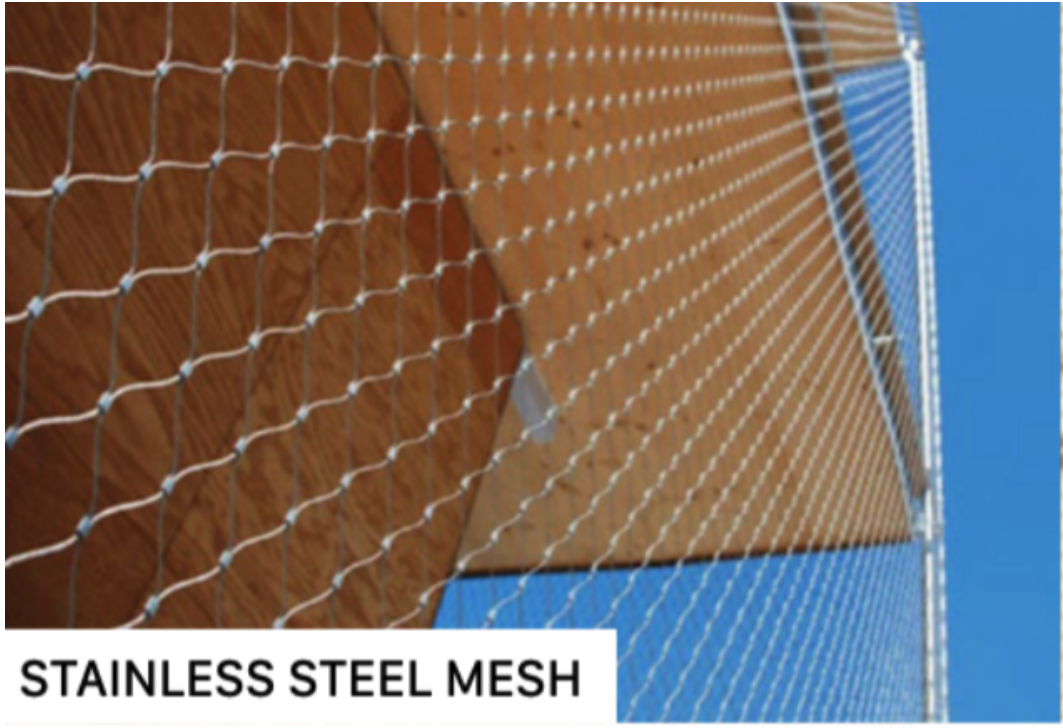
03 SECTION Lower Block L
1:200



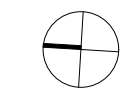
BWKX



FT02



FT03



GENERAL NOTES

- ALL DIMENSIONS AND EXISTING CONDITIONS SHALL BE CHECKED AND VERIFIED BY THE CONTRACTOR BEFORE PROCEEDING WITH THE WORK.
- ALL LEVELS RELATIVE TO AUSTRALIAN HEIGHT DATUM.
- DO NOT SCALE DRAWINGS.
- USE FIGURED DIMENSIONS ONLY.

Legend

REFER	
SSDA-740000	EXTERIOR FINISHES SAMPLE BOARD

BWK1	BRICKWORK TYPE 1 - FACE BRICK
BW02	BLOCKWORK PAINTED
BWKX	EXISTING FACE BRICK FACADE

GL01	GLAZING - CLEAR
GL02	GLAZING - DARK

CL01	EQUITONE CLADDING DARK
CL02	CORRUGATED CLADDING DARK
CL03	FIBRE CEMENT - PAINTED LIGHT
CL04	ACCIDULATED TREATED TIMBER
CL05	ALUMINIUM SHEET CLADDING DARK

CEL4.2	EQUITONE (FIBRE CEMENT) CLADDING SOFFIT
FT03	HIGH TENSILE MESH AND INTEGRATED
FT04	PAINTED STEEL COLUMN WITH ACCOYA CLADDING

LV01	EXTERNAL ALUMINIUM LOUVRES
LV02	EXTERNAL GLAZED AUTOMATED LOUVRES
PF30	PAINTED STEEL

ROF01	CORRUGATED ROOF CLADDING LIGHT
-------	--------------------------------

02	14/4/21	SSDA	MJ
01	26/3/21	SSDA	KT
rev	date	name	by chk

fjmt studio architecture interiors landscape urban community
sydney melbourne uk
Level 5, 70 King Street t +61 2 9251 7077 w fjmtstudio.com



project
Hastings Schools Port Macquarie
Hastings Secondary College
Port Macquarie NSW 2444

title
Facade Types
Facade - Building L

scale	first issued	26/3/21
project code	sheet no.	revision
HSPM	SSDA-702020	02

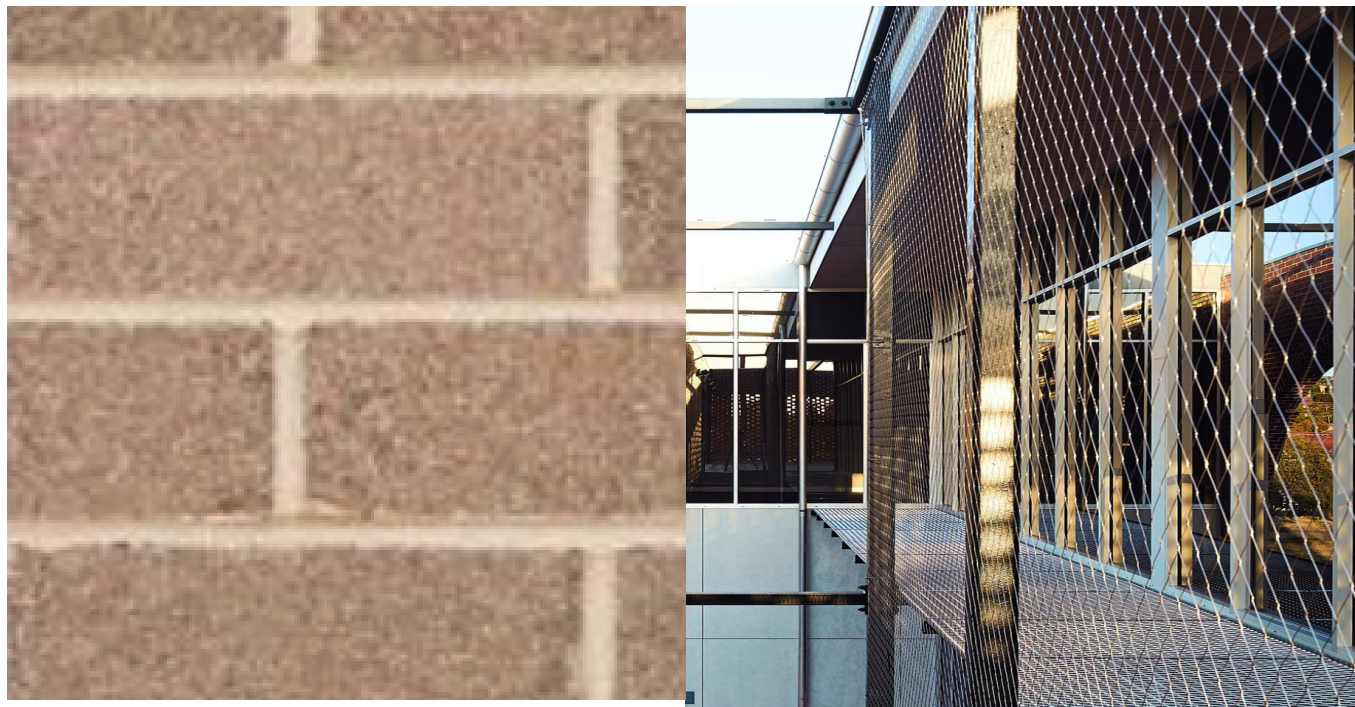
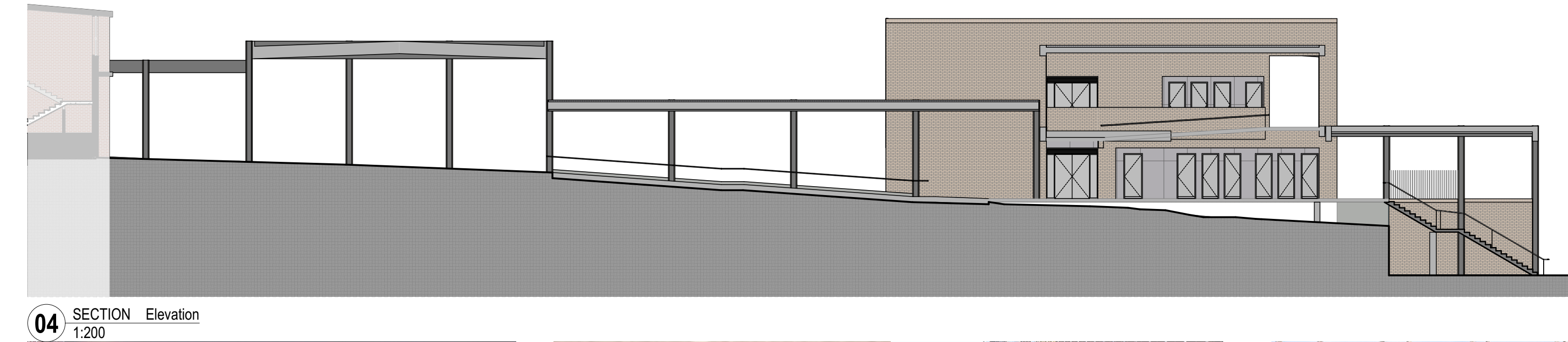
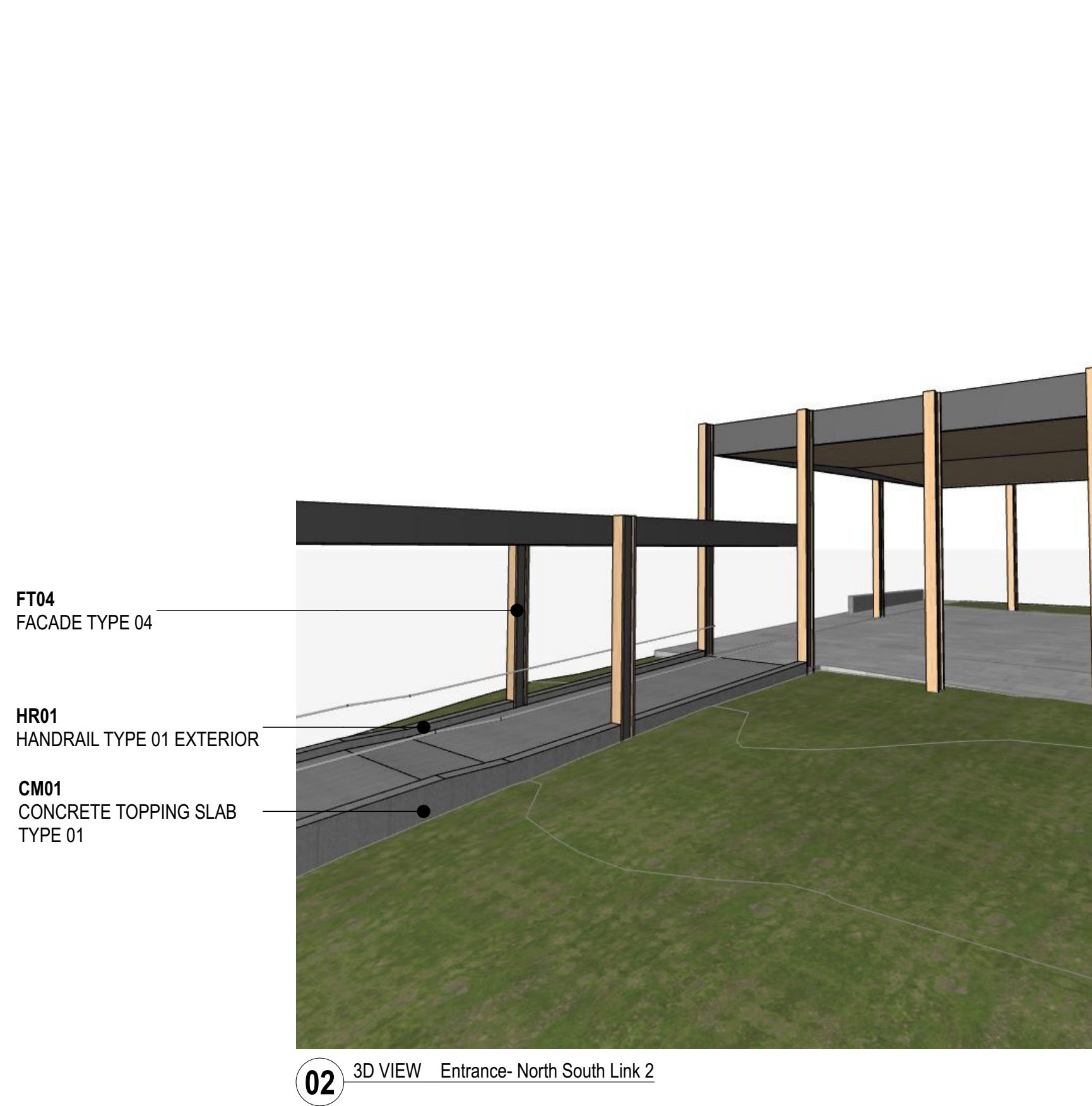
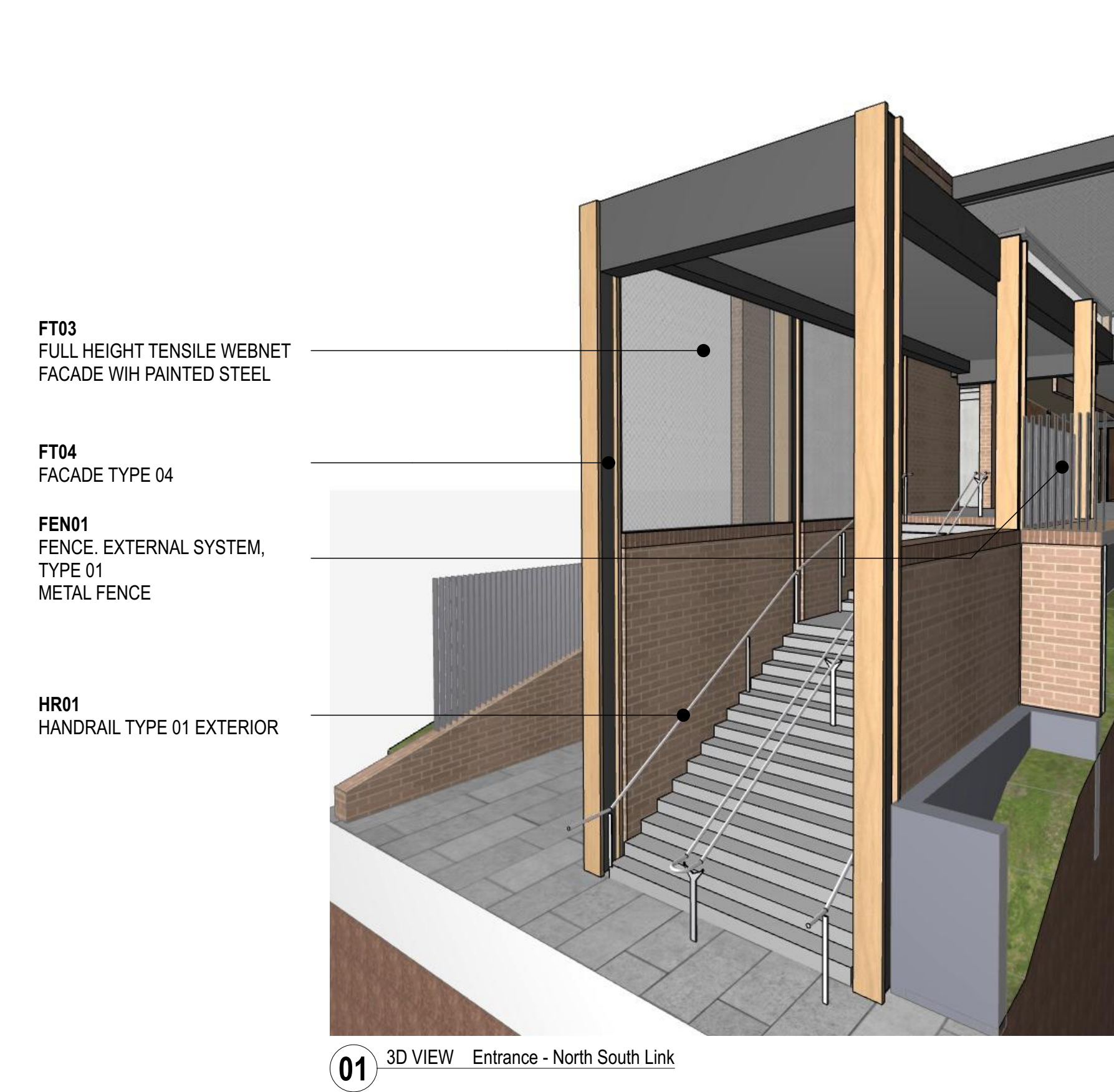
ENTRY CANOPY

- FT01

FACADE TYPE 01
BRICKWORK WALLS AND COLUMNS
- FT03


FACADE TYPE 03
FULL HEIGHT TENSILE WEBNET FACADE WITH PAINTED STEEL FIXING LOCATED BETWEEN BRICKWORK COLUMNS
- FT04

FACADE TYPE 04



GENERAL NOTES	
ALL DIMENSIONS AND EXISTING CONDITIONS	
◦ SHALL BE CHECKED AND VERIFIED BY THE CONTRACTOR BEFORE PROCEEDING WITH THE WORK.	
◦ ALL LEVELS RELATIVE TO 'AUSTRALIAN HEIGHT DATUM'.	
◦ DO NOT SCALE DRAWINGS	
◦ USE FIGURED DIMENSIONS ONLY.	
Legend	
REFER	
SSDA-740000	EXTERIOR FINISHES SAMPLE BOARD
BWK1	BRICKWORK TYPE 1 - FACE BRICK
BW02	BLOCKWORK PAINTED
BWKX	EXISTING FACE BRICK FACADE
GL01	GLAZING - CLEAR
GL02	GLAZING - DARK
CL01	EQUITONE CLADDING DARK
CL02	CORRUGATED CLADDING DARK
CL03	FIBRE CEMENT - PAINTED LIGHT
CL04	ACCIDULATED TREATED TIMBER
CL05	ALUMINIUM SHEET CLADDING DARK
CEL42	EQUITONE (FIBRE CEMENT) CLADDING SOFFIT
FT03	HIGH TENSILE MESH AND INTEGRATED
FT04	PAINTED STEEL COLUMN WITH ACCOYA CLADDING
LV01	EXTERNAL ALUMINIUM LOUVRES
LV02	EXTERNAL GLAZED AUTOMATED LOUVRES
PF30	PAINTED STEEL
ROF01	CORRUGATED ROOF CLADDING LIGHT

02	14/4/21	SSDA	MJ
01	26/3/21	SSDA	KT
rev	date	name	by

fjmt studio architecture interiors landscape urban community sydney melbourne uk Level 5, 70 King Street t +61 2 9251 7077 w fjmtstudio.com		
project Hastings Schools Port Macquarie Hastings Secondary College Port Macquarie NSW 2444		
title Facade Types Facade - School Entry Canopy		
scale		
first issued		26/3/21
project code	sheet no.	revision
HSPM	SSDA-702030	02