

#	Status	Description	Date
C		SSDA Updates	21/09/02
D		SSDA Submission	21/09/15
E		SSDA RIS	21/12/03
F		SSDA RIS	22/02/24
G		SSDA RIS Resubmission	22/05/20
H		SSDA S4.55 Submission	22/06/20
I		SSDA S4.55 Submission	22/11/10
J		SSDA S4.55 Submission	22/11/28
K		SSDA S4.55 Submission	22/12/01
L		SSDA S4.55 No.2	24/08/20
M			

Notes  
 Copyright © Woods Bagot 2018  
 All Rights Reserved  
 No material may be reproduced without prior permission  
 Contractor must verify all dimensions on site before commencing work or preparing shop drawings.  
 Do not scale drawings.

THIS DRAWING IS THE RESULT OF THE FINAL FOR CONSTRUCTION DRAWING UPDATED TO REFLECT MAIN CHANGES DURING CONSTRUCTION. THE DIMENSIONS NOTED DO NOT TAKE INTO ACCOUNT BUILDING TOLERANCES, MOVEMENT ETC AND MAY NOT REFLECT ACTUAL BUILT DIMENSIONS

Project  
 SYDNEY OLYMPIC PARK HIGH SCHOOL



Project number  
 121566

Checked	Approved	Sheet size	Scale
MH	CS	A1	1:500

Sheet title  
 SSDA  
 Site Plan Proposed

Sheet number  
 SOPHS-WB-AR-DA1102

Status  
 SSDA

Revision  
 M

#	Status	Description	Date
C	SSDA Submission	SSDA Submission	21/09/15
D	SSDA RIS	SSDA RIS	21/12/03
E	SSDA RIS	SSDA RIS	22/02/24
F	SSDA RIS Resubmission	SSDA RIS Resubmission	22/05/20
G	SSDA RIS Resubmission	SSDA RIS Resubmission	22/06/02
H	SSDA S4.55 Submission	SSDA S4.55 Submission	22/06/07
I	SSDA S4.55 Submission	SSDA S4.55 Submission	22/11/10
K	SSDA S4.55 Submission	SSDA S4.55 Submission	22/11/28
L	SSDA S4.55 Submission	SSDA S4.55 Submission	22/12/01
M	SSDA S4.55 No.2	SSDA S4.55 No.2	24/08/20

Notes  
 Copyright © Woods Bagot 2018  
 All Rights Reserved  
 No material may be reproduced without prior permission  
 Contractor must verify all dimensions on site before commencing work or preparing shop drawings.  
 Do not scale drawings.

THIS DRAWING IS THE RESULT OF THE FINAL FOR CONSTRUCTION DRAWING UPDATED TO REFLECT MAIN CHANGES DURING CONSTRUCTION. THE DIMENSIONS NOTED DO NOT TAKE INTO ACCOUNT BUILDING TOLERANCES, MOVEMENT ETC AND MAY NOT REFLECT ACTUAL BUILT DIMENSIONS

Project  
 SYDNEY OLYMPIC PARK HIGH SCHOOL

Client

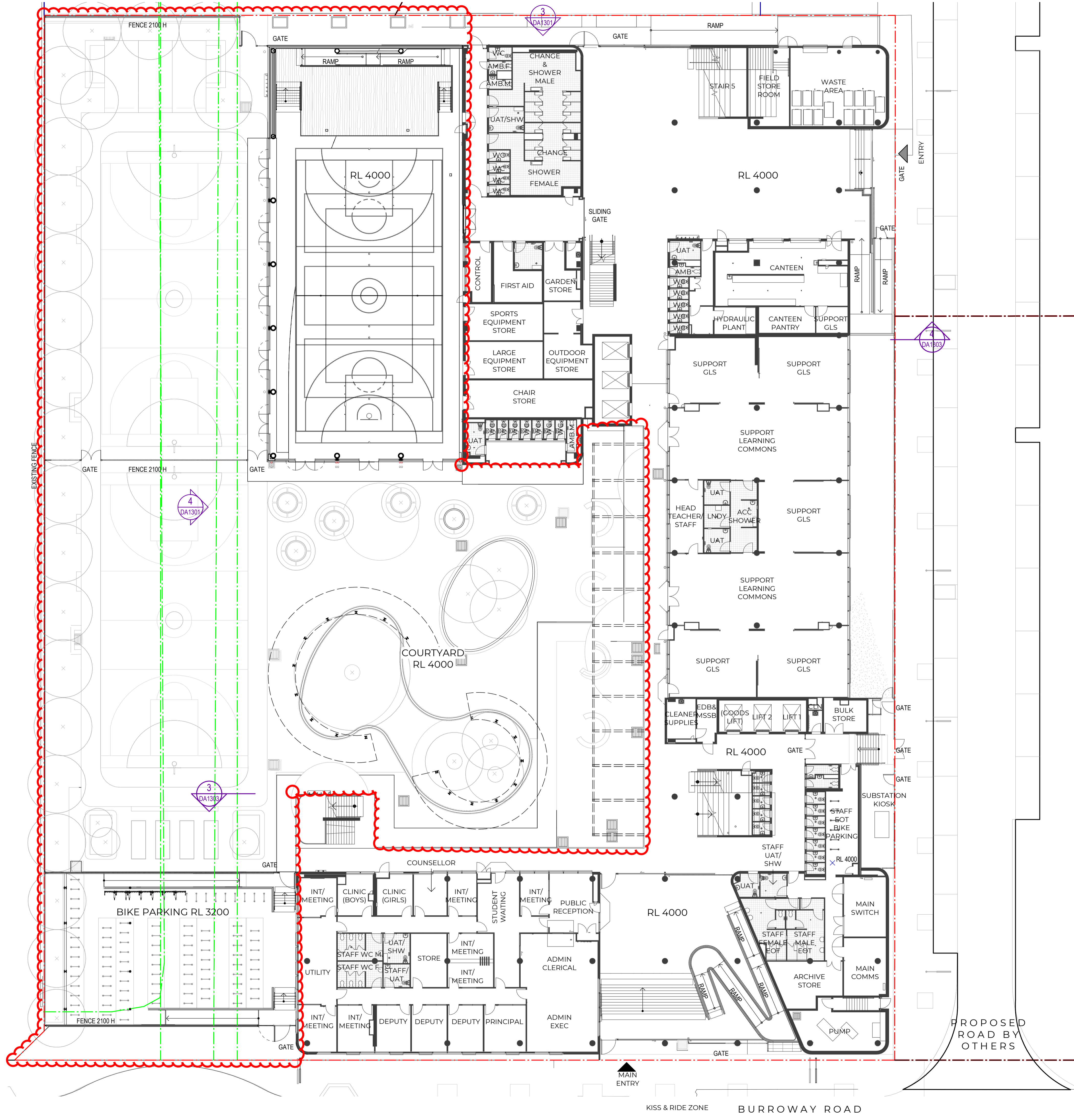
Issuer  
**W-B**  
 WOODS BAGOT

Project number 121566  
 Checked MH Approved CS  
 Size check 25mm  
 Sheet size A1  
 Scale 1:200

Sheet title  
 SSDA  
 Proposed Ground Plan

Sheet number  
 SOPHS-WB-AR-DA1200  
 Status  
 SSDA

Revision  
 M





Recent revision history	#	Status	Description	Date
A	SSDA Draft Issue	21/08/16		
B	SSDA Draft Issue Updates	21/08/18		
C	SSDA Submission	21/09/15		
D	SSDA RIS	21/12/23		
E	SSDA RIS Submission	22/02/24		
F	SSDA S4.55 Submission	22/02/24		
G	SSDA S4.55 Submission	22/11/10		
H	SSDA S4.55 Submission	22/11/28		
J	SSDA S4.55 Submission	22/12/01		
	SSDA S4.55 No.2	24/08/20		

Notes  
 Copyright © Woods Bagot 2018  
 All Rights Reserved  
 No material may be reproduced without prior permission  
 Contractor must verify all dimensions on site before commencing work or preparing shop drawings.  
 Do not scale drawings.

THIS DRAWING IS THE RESULT OF THE FINAL FOR CONSTRUCTION DRAWING UPDATED TO REFLECT MAIN CHANGES DURING CONSTRUCTION. THE DIMENSIONS NOTED DO NOT TAKE INTO ACCOUNT BUILDING TOLERANCES, MOVEMENT ETC AND MAY NOT REFLECT ACTUAL BUILT DIMENSIONS

Project  
 SYDNEY OLYMPIC PARK HIGH SCHOOL

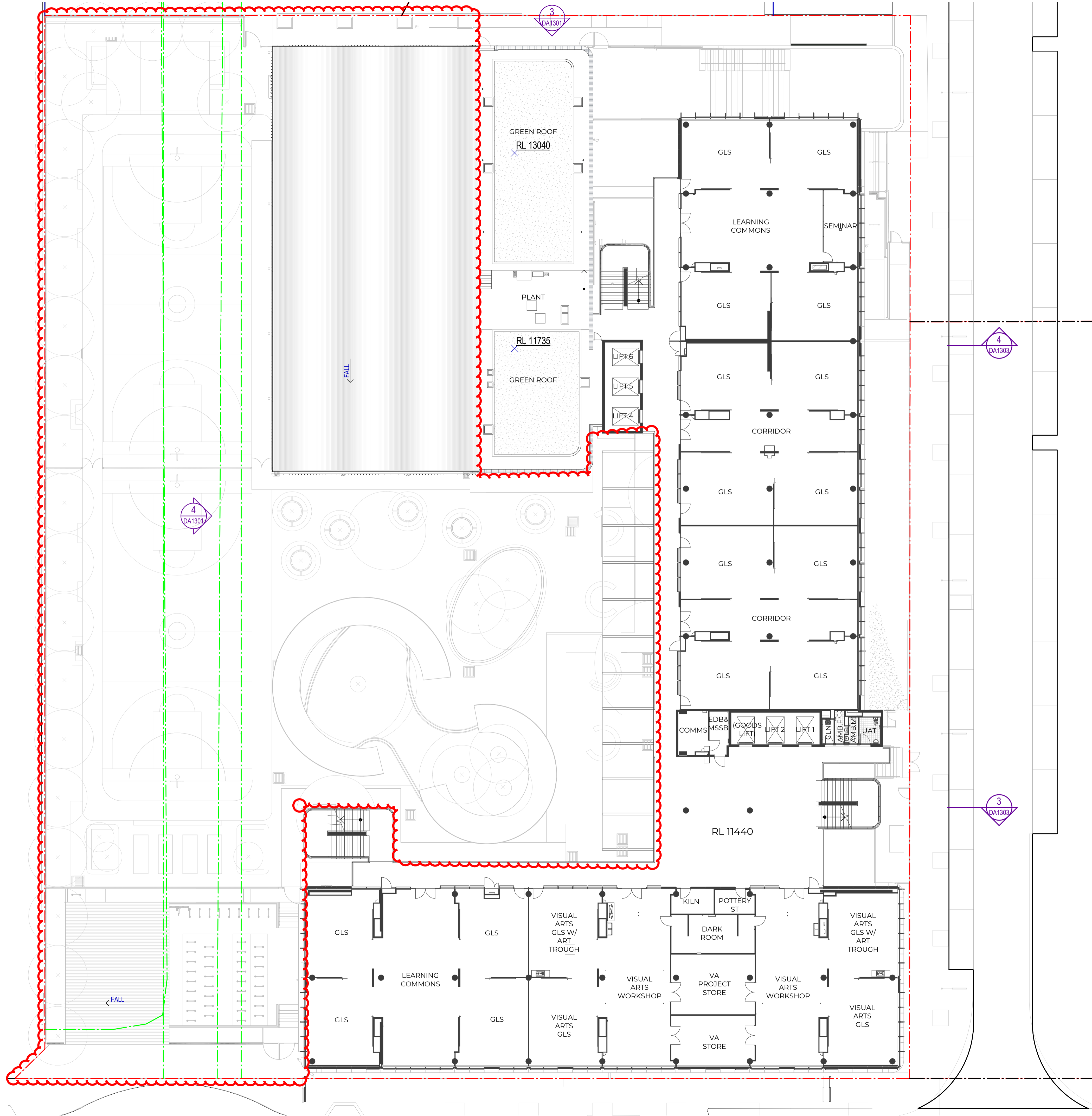
Client

Issuer  
**W-B**  
 WOODS BAGOT

Project number 121566  
 Checked MH Approved CS Sheet size A1 Scale 1:200  
 Size check 25mm

Sheet title  
 SSDA  
 Proposed Plan Level 2

Sheet number  
 SOPHS-WB-AR-DA1202  
 Status  
 SSDA  
 Revision  
 K



Recent revision history	#	Status	Description	Date
A	SSDA Draft Issue	21/08/16		
B	SSDA Draft Issue Updates	21/08/18		
C	SSDA Submission	21/09/15		
D	SSDA RIS	21/12/03		
E	SSDA RIS	22/02/24		
F	SSDA RIS Submission	22/06/20		
G	SSDA S4.55 Submission	22/11/10		
H	SSDA S4.55 Submission	22/11/28		
J	SSDA S4.55 Submission	22/12/01		
	SSDA S4.55 No.2	24/08/20		

Notes  
 Copyright © Woods Bagot 2018  
 All Rights Reserved  
 No material may be reproduced without prior permission  
 Contractor must verify all dimensions on site before commencing work or preparing shop drawings.  
 Do not scale drawings.

THIS DRAWING IS THE RESULT OF THE FINAL FOR CONSTRUCTION DRAWING UPDATED TO REFLECT MAIN CHANGES DURING CONSTRUCTION. THE DIMENSIONS NOTED DO NOT TAKE INTO ACCOUNT BUILDING TOLERANCES, MOVEMENT ETC AND MAY NOT REFLECT ACTUAL BUILT DIMENSIONS

Project  
 SYDNEY OLYMPIC PARK HIGH SCHOOL

Client

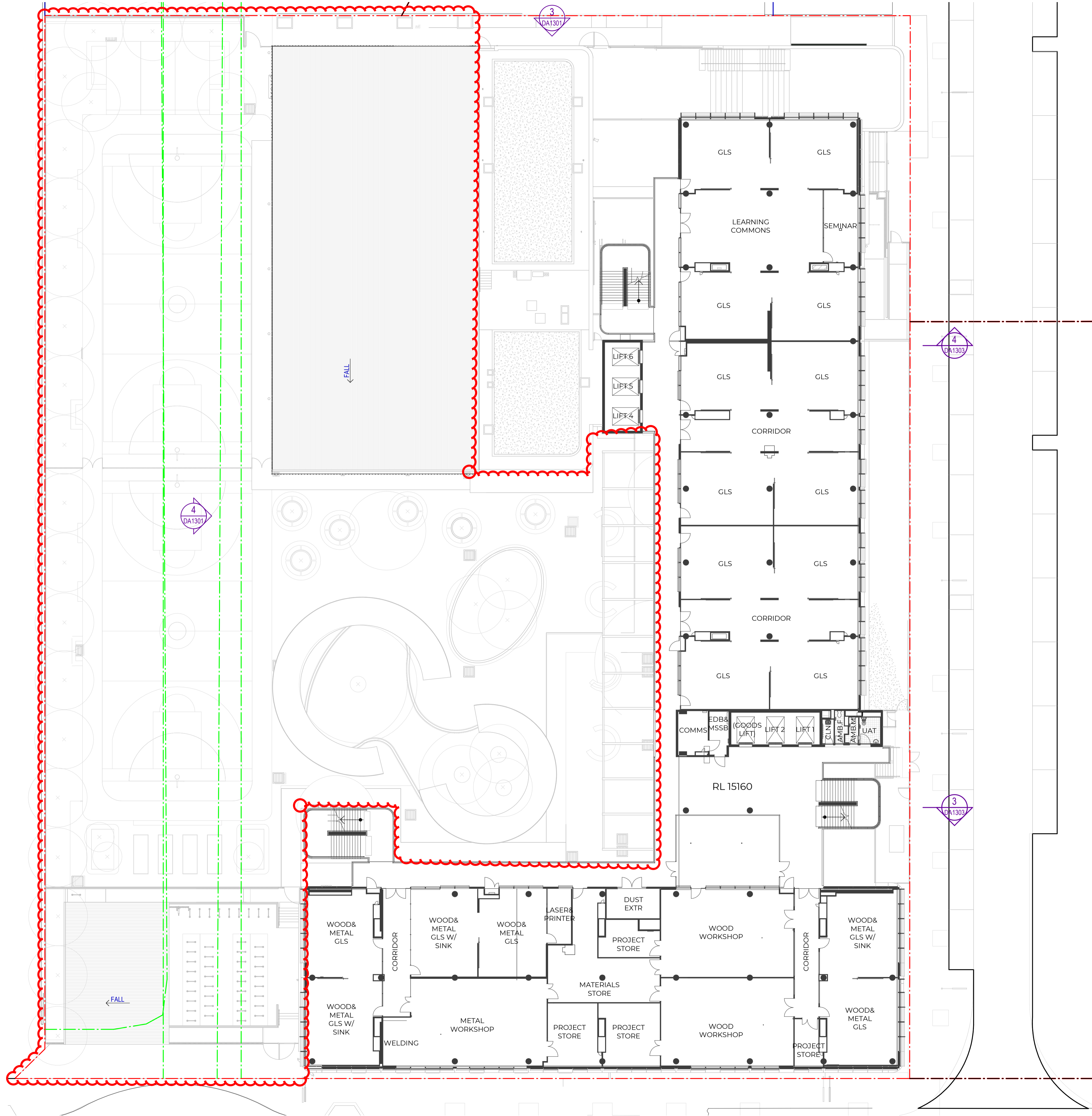
Issuer  
**W-B**  
 WOODS BAGOT

Project number 121566  
 Checked MH Approved CS  
 Size check 25mm  
 Sheet size A1 Scale 1:200

Sheet title  
 SSDA  
 Proposed Plan Level 3

Sheet number  
**SOPHS-WB-AR-DA1203**  
 Status  
 SSDA

Revision  
 K



Recent revision history	#	Status	Description	Date
	A	SSDA Draft Issue		21/08/16
	B	SSDA Draft Issue Updates		21/08/18
	C	SSDA Submission		21/09/15
	D	SSDA RIS		21/12/03
	E	SSDA RIS		22/02/24
	F	SSDA RIS Submission		22/06/20
	G	SSDA S4.55 Submission		22/11/10
	H	SSDA S4.55 Submission		22/11/28
	J	SSDA S4.55 Submission		22/12/01
		SSDA S4.55 No.2		24/08/20

Notes  
 Copyright © Woods Bagot 2018  
 All Rights Reserved  
 No material may be reproduced without prior permission  
 Contractor must verify all dimensions on site before commencing work or preparing shop drawings.  
 Do not scale drawings.

THIS DRAWING IS THE RESULT OF THE FINAL FOR CONSTRUCTION DRAWING UPDATED TO REFLECT MAIN CHANGES DURING CONSTRUCTION. THE DIMENSIONS NOTED DO NOT TAKE INTO ACCOUNT BUILDING TOLERANCES, MOVEMENT ETC AND MAY NOT REFLECT ACTUAL BUILT DIMENSIONS

Project  
 SYDNEY OLYMPIC PARK HIGH SCHOOL

Client

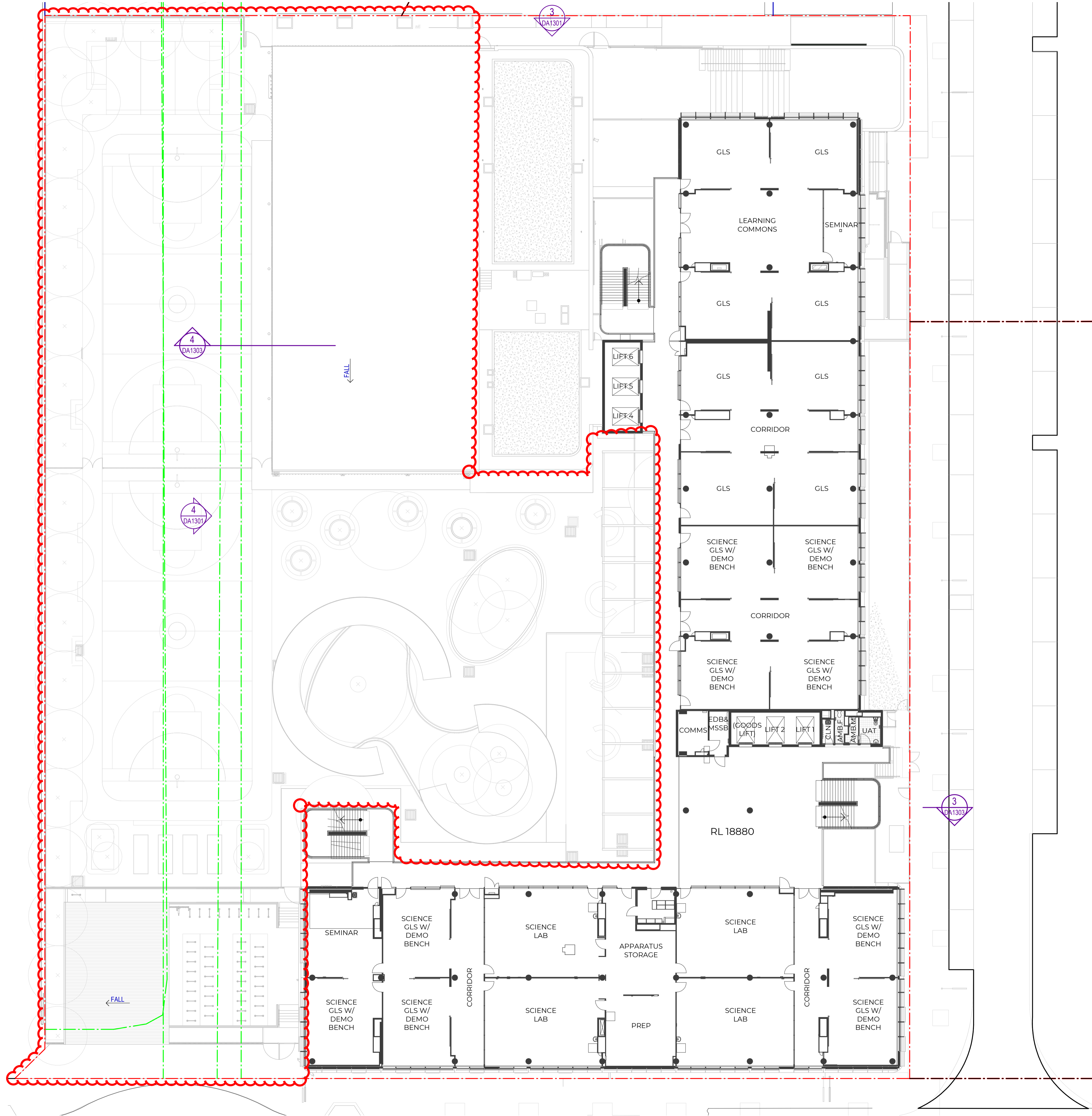
Issuer  
**W-B**  
 WOODS BAGOT

Project number 121566  
 Checked MH Approved CS  
 Size check 25mm  
 Sheet size A1  
 Scale 1:200

Sheet title  
 SSDA  
 Proposed Plan Level 4

Sheet number  
**SOPHS-WB-AR-DA1204**  
 Status  
 SSDA

Revision  
**K**





Recent revision history	#	Status	Description	Date
	A	SSDA Draft Issue		21/08/16
	B	SSDA Draft Issue Updates		21/08/18
	C	SSDA Submission		21/09/15
	D	SSDA RIS		21/12/03
	E	SSDA RIS Resubmission		22/05/20
	G	SSDA S4.55 Submission		22/11/10
	H	SSDA S4.55 Submission		22/11/28
	J	SSDA S4.55 Submission		22/12/01
	K	SSDA S4.55 N 2		24/08/24

Notes  
 Copyright © Woods Bagot 2018  
 All Rights Reserved  
 No material may be reproduced without prior permission  
 Contractor must verify all dimensions on site before commencing work or preparing shop drawings.  
 Do not scale drawings.

THIS DRAWING IS THE RESULT OF THE FINAL FOR CONSTRUCTION DRAWING UPDATED TO REFLECT MAIN CHANGES DURING CONSTRUCTION. THE DIMENSIONS NOTED DO NOT TAKE INTO ACCOUNT BUILDING TOLERANCES, MOVEMENT ETC AND MAY NOT REFLECT ACTUAL BUILT DIMENSIONS

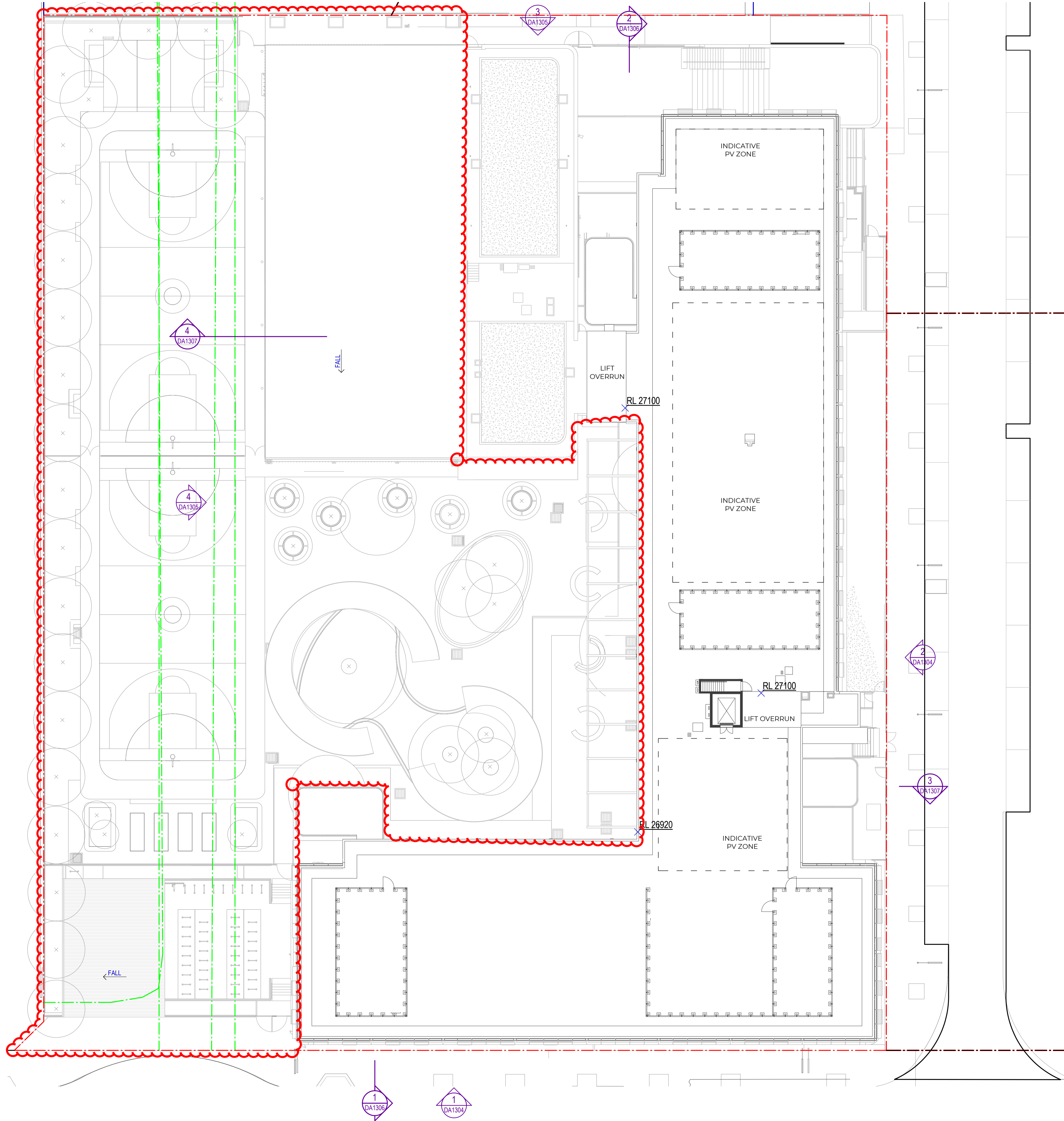
Project  
 SYDNEY OLYMPIC PARK HIGH SCHOOL



Project number: 121566  
 Size check: 25mm  
 Checked: MH, Approved: CS, Sheet size: A1, Scale: 1:200

Sheet title  
 SSDA  
 Proposed Plan Roof

Sheet number: SOPHS-WB-AR-DA1206  
 Status: SSDA  
 Revision: K



Recent revision history	#	Status	Description	Date
G	1	SSDA RIS	SSDA RIS	21/12/203
H	2	SSDA RIS	SSDA RIS	22/02/24
J	3	SSDA RIS Resubmission	SSDA RIS Resubmission	22/05/20
K	4	SSDA Elevation Material Update	SSDA Elevation Material Update	22/05/20
L	5	SSDA Elevation Update	SSDA Elevation Update	23/05/25
M	6	SSDA Modification Package	SSDA Modification Package	23/09/20
N	7	SSDA MOD LIFT Overrun	SSDA MOD LIFT Overrun	23/09/25
P	8	SSDA MOD LIFT Overrun	SSDA MOD LIFT Overrun	23/09/26
Q	9	SSDA MOD LIFT Overrun	SSDA MOD LIFT Overrun	23/09/28
R	10	SSDA S4.55 No.2	SSDA S4.55 No.2	24/08/26

Notes  
 Copyright © Woods Bagot 2018  
 All Rights Reserved  
 No material may be reproduced without prior permission  
 Contractor must verify all dimensions on site before commencing work or preparing shop drawings.  
 Do not scale drawings.

**EXTERNAL MATERIAL LEGEND**

REFER TO SCHEDULE ATTACHED FOR MORE INFORMATION AND COLOUR DESCRIPTION

- 01 MASONRY
- 02 METAL PROFILE CLADDING
- 03 METAL SUNSHADE
- 04 METAL BALUSTRADE / FENCE / GATE
- 05 STRUCTURAL COLUMN
- 06 METAL SCREEN
- 07 GLAZING AND SPANDREL
- 08 CONCRETE
- 09 METAL FRAME
- 10 SIGNAGE
- 12 SHADING STRUCTURE
- 13 METAL CLADDING
- 14 VERTICAL FOLDING DOORS
- 15 METAL FIXED ARTWORK
- 16 EXTERNAL METAL SOFFIT
- 17 METAL CLADDING TO GYM

THIS DRAWING IS THE RESULT OF THE FINAL FOR CONSTRUCTION DRAWING UPDATED TO REFLECT MAIN CHANGES DURING CONSTRUCTION. THE DIMENSIONS NOTED DO NOT TAKE INTO ACCOUNT BUILDING TOLERANCES, MOVEMENT ETC AND MAY NOT REFLECT ACTUAL BUILT DIMENSIONS

Project  
 SYDNEY OLYMPIC PARK HIGH SCHOOL



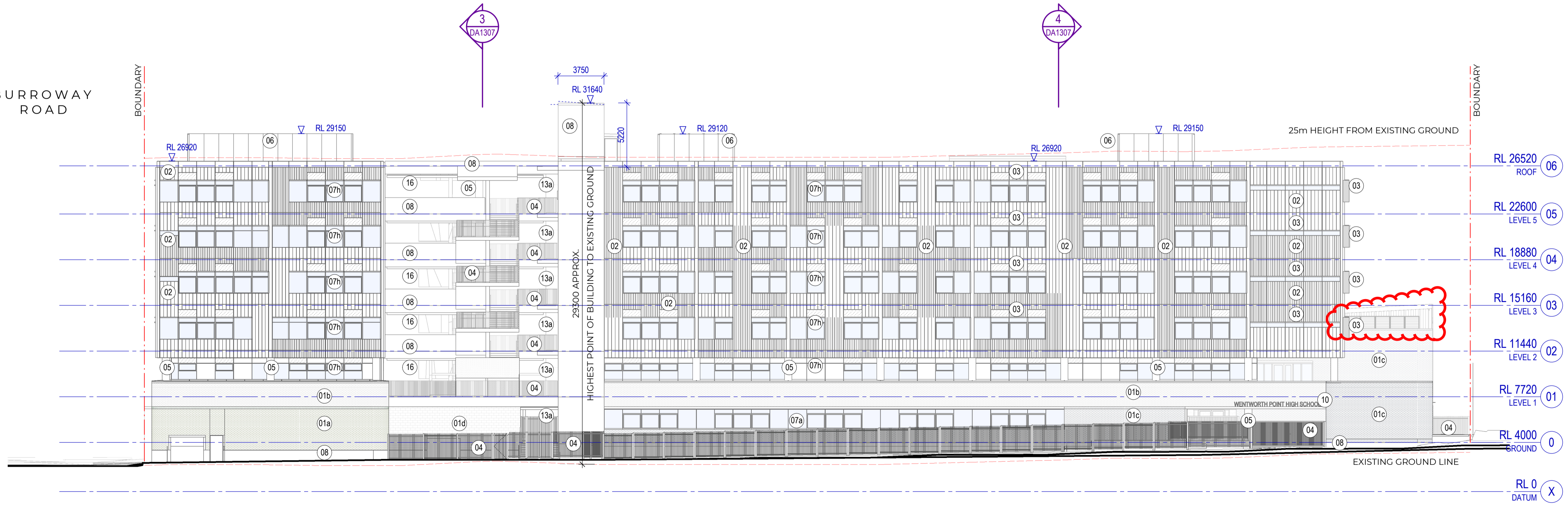
Project number 121566  
 Checked MH Approved CS Size check 25mm Sheet size A1 Scale 1:200

Sheet title  
 SSDA  
 Proposed Elevations

Sheet number SOPHS-WB-AR-DA1304  
 Status SSDA  
 Revision R



1 PROPOSED ELEVATION 1  
 SCALE 1:200



2 PROPOSED ELEVATION 2  
 SCALE 1:200

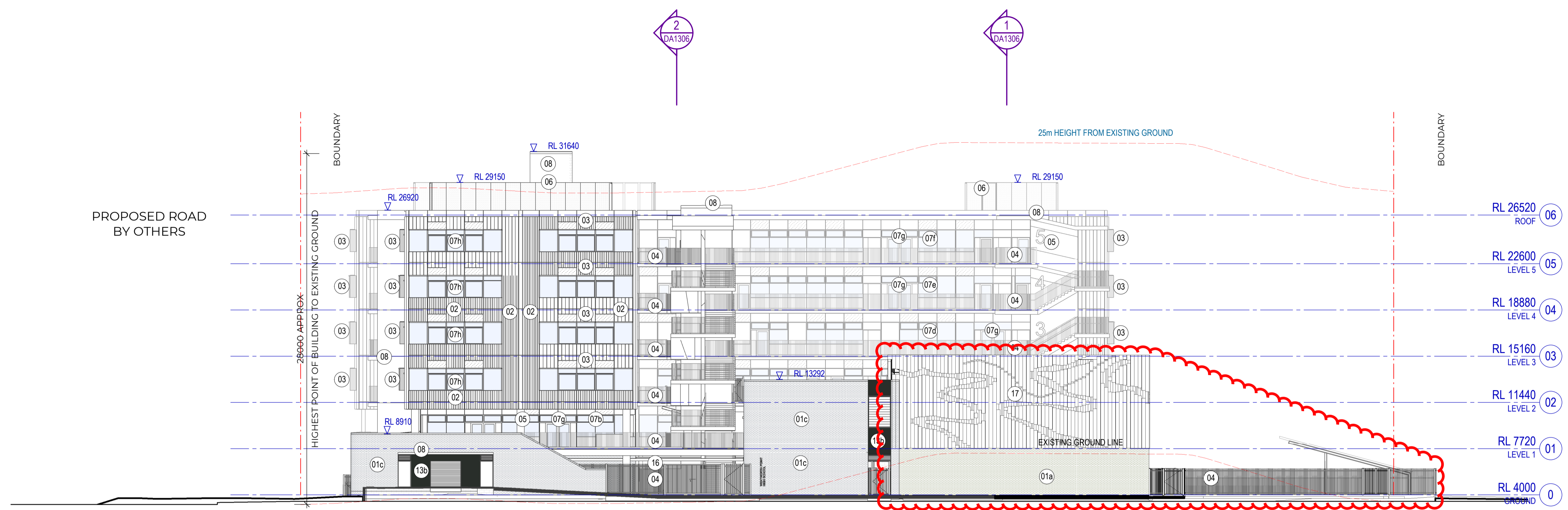
#	Status	Description	Date
F	SSDA RIS		21/12/23
G	SSDA RIS		22/02/24
H	SSDA RIS Resubmission		22/05/20
K	SSDA Extension Material Update		22/09/23
L	Lift Overrun Update		23/06/25
M	SSDA Modification Package		23/09/20
N	SSDA MOD Lift Overrun		23/09/25
P	SSDA MOD Lift Overrun		23/09/26
P	SSDA MOD Lift Overrun		23/09/28
Q	SSDA S4.55 No.2		24/08/26

Notes  
 Copyright © Woods Bagot 2018  
 All Rights Reserved  
 No material may be reproduced without prior permission  
 Contractor must verify all dimensions on site before commencing work or preparing shop drawings.  
 Do not scale drawings.

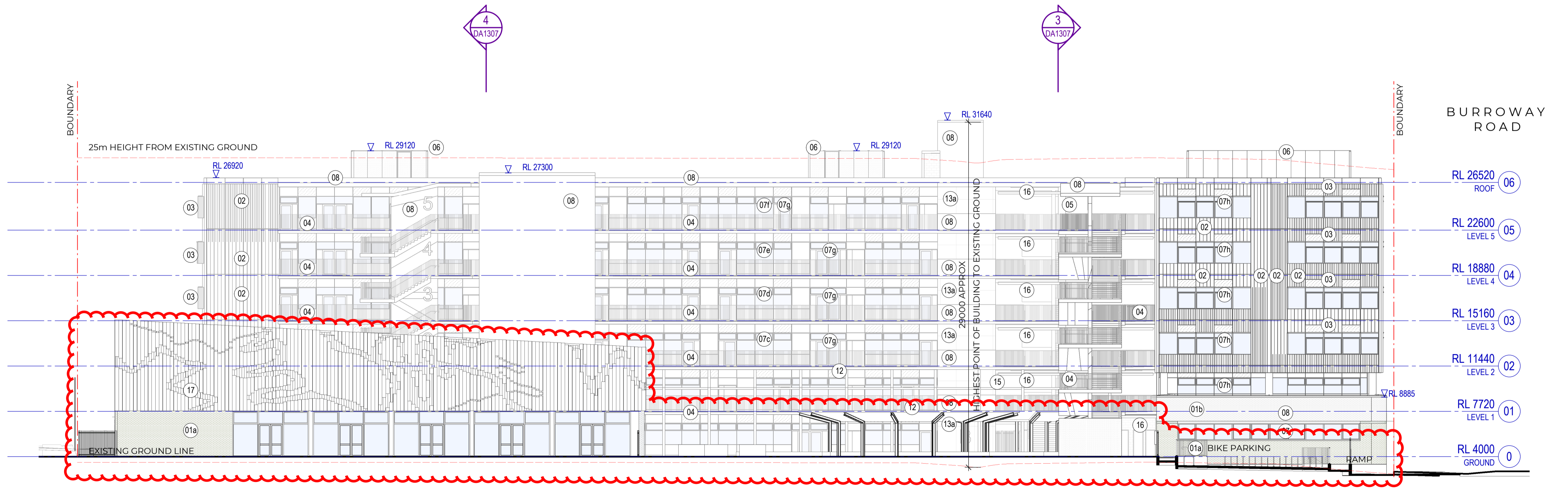
**EXTERNAL MATERIAL LEGEND**

REFER TO SCHEDULE ATTACHED FOR MORE INFORMATION AND COLOUR DESCRIPTION

- 01 MASONRY
- 02 METAL PROFILE CLADDING
- 03 METAL SUNSHADE
- 04 METAL BALUSTRADE / FENCE / GATE
- 05 STRUCTURAL COLUMN
- 06 METAL SCREEN
- 07 GLAZING AND SPANDREL
- 08 CONCRETE
- 09 METAL FRAME
- 10 SIGNAGE
- 12 SHADING STRUCTURE
- 13 METAL CLADDING
- 14 VERTICAL FOLDING DOORS
- 15 METAL FIXED ARTWORK
- 16 EXTERNAL METAL SOFFIT
- 17 METAL CLADDING TO GYM



3 PROPOSED ELEVATION 3  
 SCALE 1:200



4 PROPOSED ELEVATION 4  
 SCALE 1:200

THIS DRAWING IS THE RESULT OF THE FINAL FOR CONSTRUCTION DRAWING UPDATED TO REFLECT MAIN CHANGES DURING CONSTRUCTION. THE DIMENSIONS NOTED DO NOT TAKE INTO ACCOUNT BUILDING TOLERANCES, MOVEMENT ETC AND MAY NOT REFLECT ACTUAL BUILT DIMENSIONS

Project  
 SYDNEY OLYMPIC PARK HIGH SCHOOL

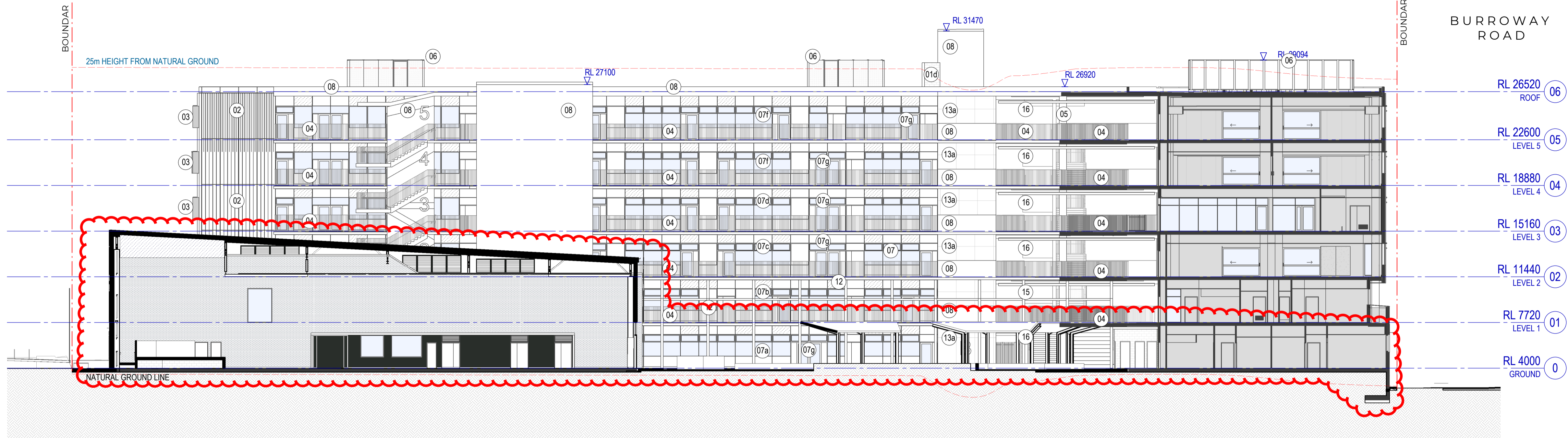
Client  
 roberts CO

Issuer  
 W-B WOODS BAGOT

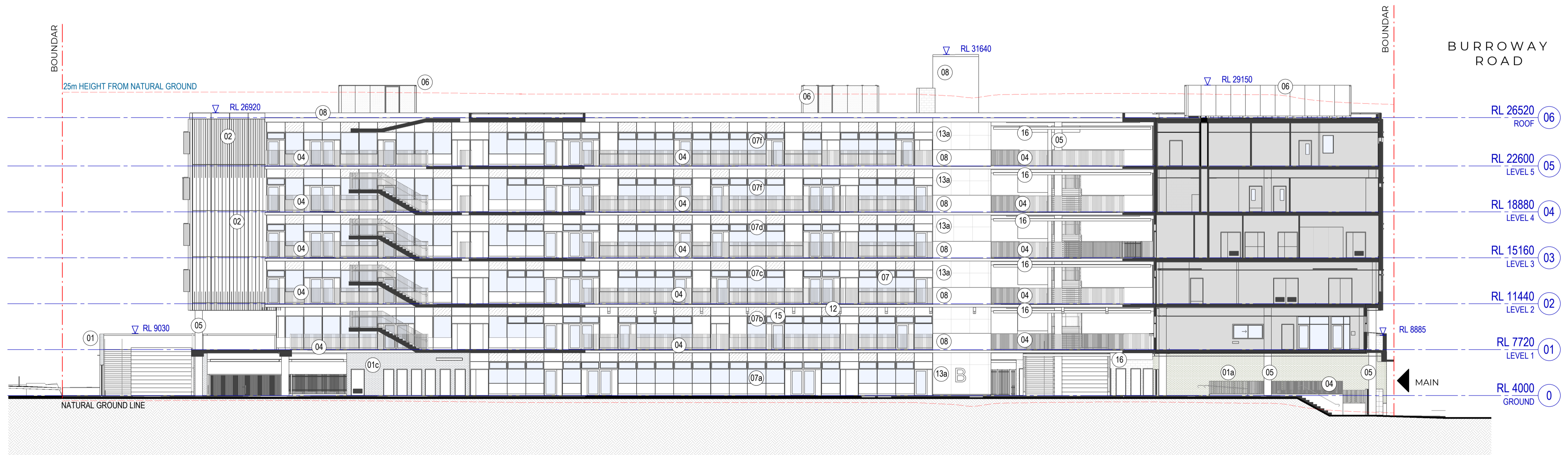
Project number 121566  
 Checked MH Approved CS Size check 25mm Sheet size A1 Scale 1:200

Sheet title  
 SSDA Proposed Elevations

Sheet number SOPHS-WB-AR-DA1305  
 Status SSDA Revision Q



1 OVERALL SECTION 1  
SCALE 1 : 200



2 OVERALL SECTION 2  
SCALE 1 : 200

Recent revision history	#	Status	Description	Date
D	0	SSDA RIS		21/12/23
E	1	SSDA RIS		22/02/24
F	2	SSDA RIS Resubmission		22/05/20
G	3	SSDA RIS Resubmission		22/09/21
H	4	Lift Overrun Update		23/06/25
I	5	SSDA Modification Package		23/09/20
K	6	SSDA MOD Lift Overrun		23/09/25
L	7	SSDA MOD Lift Overrun		23/09/26
M	8	SSDA MOD Lift Overrun		23/09/28
N	9	SSDA S4.55 No.2		24/08/26

Notes  
Copyright © Woods Bagot 2018  
All Rights Reserved  
No material may be reproduced without prior permission  
Contractor must verify all dimensions on site before commencing work or preparing shop drawings.  
Do not scale drawings.

**EXTERNAL MATERIAL LEGEND**  
REFER TO SCHEDULE ATTACHED FOR MORE INFORMATION AND COLOUR DESCRIPTION

- 01 MASONRY
- 02 METAL PROFILE CLADDING
- 03 METAL SUNSHADE
- 04 METAL BALUSTRADE / FENCE / GATE
- 05 STRUCTURAL COLUMN
- 06 METAL SCREEN
- 07 GLAZING AND SPANDREL
- 08 CONCRETE
- 09 METAL FRAME
- 10 SIGNAGE
- 12 SHADING STRUCTURE
- 13 METAL CLADDING
- 14 VERTICAL FOLDING DOORS
- 15 METAL FIXED ARTWORK
- 16 EXTERNAL METAL SOFFIT
- 17 METAL CLADDING TO GYM

THIS DRAWING IS THE RESULT OF THE FINAL FOR CONSTRUCTION DRAWING UPDATED TO REFLECT MAIN CHANGES DURING CONSTRUCTION. THE DIMENSIONS NOTED DO NOT TAKE INTO ACCOUNT BUILDING TOLERANCES, MOVEMENT ETC AND MAY NOT REFLECT ACTUAL BUILT DIMENSIONS

Project  
SYDNEY OLYMPIC PARK HIGH SCHOOL

Client  
**roberts CO**

Issuer  
**W-B**  
WOODS BAGOT

Project number 121566  
Size check 25mm  
Checked MH Approved CS Sheet size A1 Scale 1:200

Sheet title  
SSDA  
Proposed Sections

Sheet number SOPHS-WB-AR-DA1306  
Status SSDA  
Revision N

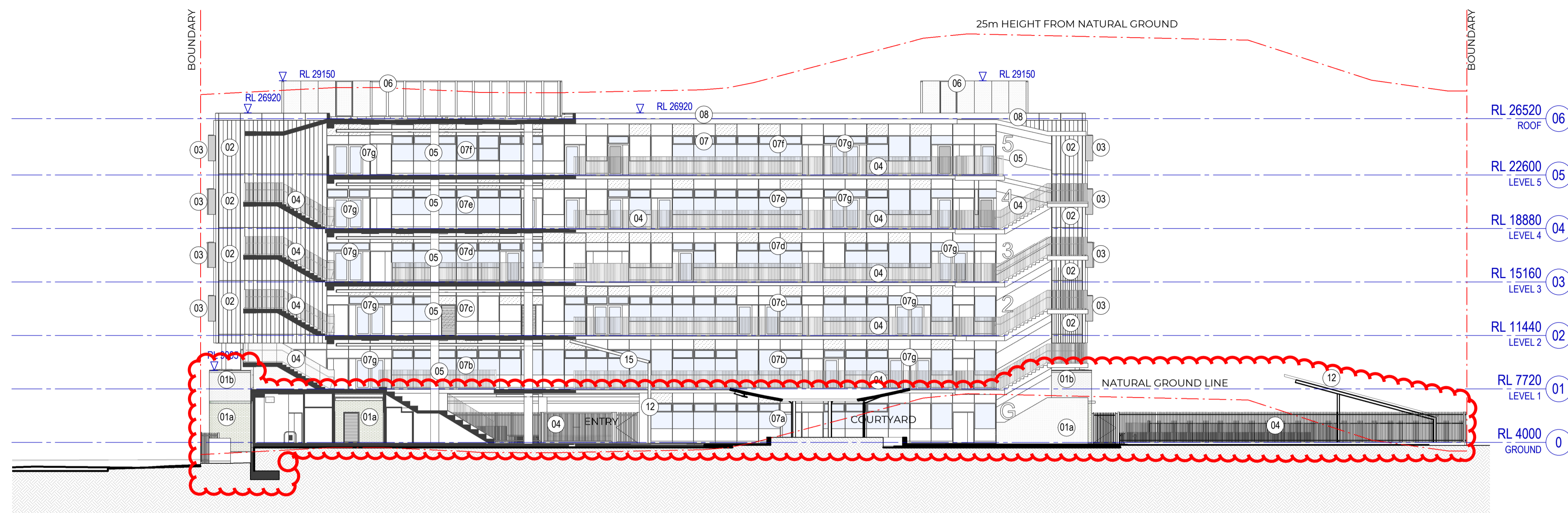
#	Status	Description	Date
C	SSDA RIS		21/12/03
D	SSDA RIS		22/02/24
E	SSDA RIS Resubmission		22/05/20
F	SSDA Elevation Material Update		22/09/09
G	SSDA Elevation Material Update		23/01/20
H	SSDA Modification Package		23/09/20
I	SSDA MOD Lift Overrun		23/09/25
K	SSDA MOD Lift Overrun		23/09/26
L	SSDA MOD Lift Overrun		23/09/28
M	SSDA S4.55 No.2		24/08/26

Notes  
 Copyright © Woods Bagot 2018  
 All Rights Reserved  
 No material may be reproduced without prior permission  
 Contractor must verify all dimensions on site before commencing work or preparing shop drawings.  
 Do not scale drawings.

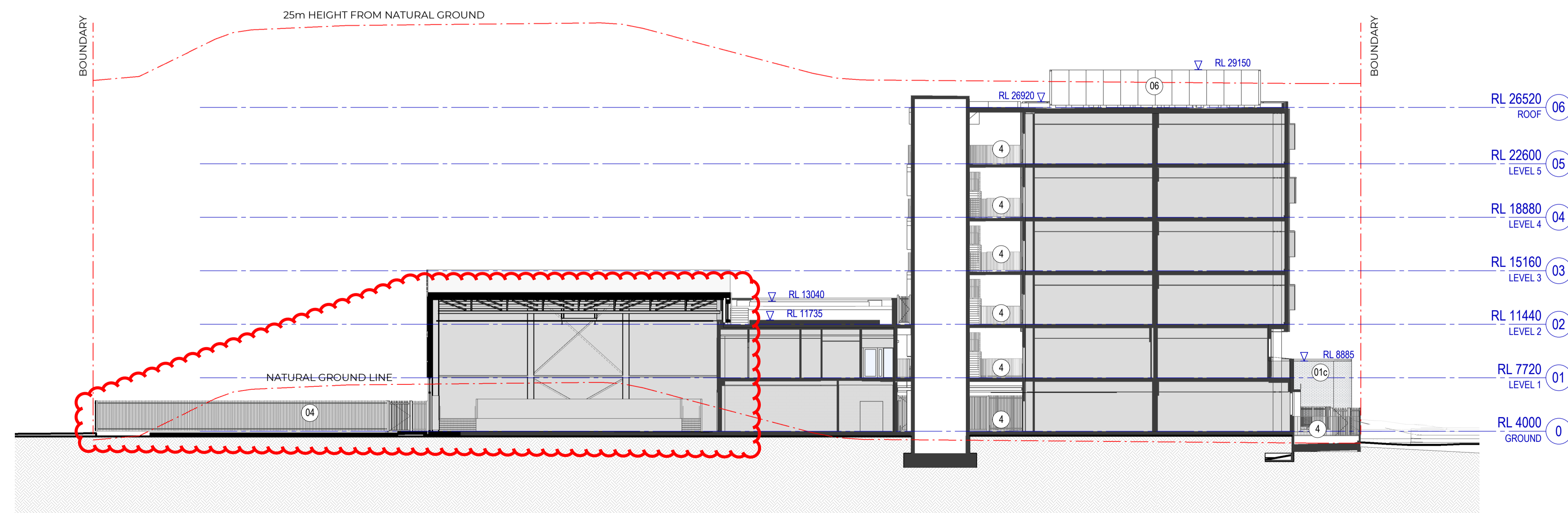
**EXTERNAL MATERIAL LEGEND**

REFER TO SCHEDULE ATTACHED FOR MORE INFORMATION AND COLOUR DESCRIPTION

- 01 MASONRY
- 02 METAL PROFILE CLADDING
- 03 METAL SUNSHADE
- 04 METAL BALUSTRADE / FENCE / GATE
- 05 STRUCTURAL COLUMN
- 06 METAL SCREEN
- 07 GLAZING AND SPANDREL
- 08 CONCRETE
- 09 METAL FRAME
- 10 SIGNAGE
- 12 SHADING STRUCTURE
- 13 METAL CLADDING
- 14 VERTICAL FOLDING DOORS
- 15 METAL FIXED ARTWORK
- 16 EXTERNAL METAL SOFFIT
- 17 METAL CLADDING TO GYM



3 PROPOSED SECTION 3  
 SCALE 1 : 200



4 PROPOSED SECTION 4  
 SCALE 1 : 200

THIS DRAWING IS THE RESULT OF THE FINAL FOR CONSTRUCTION DRAWING UPDATED TO REFLECT MAIN CHANGES DURING CONSTRUCTION. THE DIMENSIONS NOTED DO NOT TAKE INTO ACCOUNT BUILDING TOLERANCES, MOVEMENT ETC AND MAY NOT REFLECT ACTUAL BUILT DIMENSIONS

Project  
 SYDNEY OLYMPIC PARK HIGH SCHOOL



Project number 121566  
 Checked MH Approved CS Size check 25mm Sheet size A1 Scale 1:200

Sheet title  
 SSDA Proposed Sections

Sheet number SOPHS-WB-AR-DA1307  
 Status SSDA Revision M