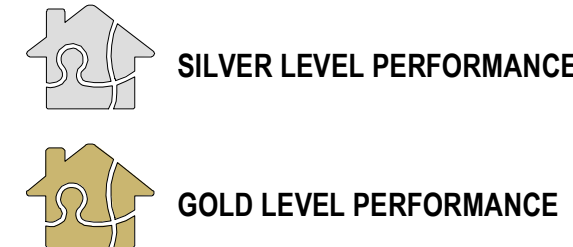


SILVER AND GOLD LEVEL APARTMENTS

LaHC REQ. 10% GFA TO BE GOLD
LaHC REQ. 90% GFA TO BE SILVER

TOTAL BUILDING GFA = 11911 m²
10% of 11911 m² = 1191.1
TOTAL GFA ALLOCATED TO GOLD LEVEL APARTMENT = 1191.5 m²



SILVER : 162 APARTMENTS

- 1 BED: 100
- 2 BED: 48
- C101 C102 C104 C201 C202 C204 C301 C302 C304 C401 C402 C404 C501 C502 C504 C601 C602 C603 C604 C605 C701 C702 C703 C704 C705 C801 C802 C803 C804 C805 C901 C902 C903 C904 C905 C907 C1001 C1002 C1003 C1004 C1005 C1007 C1101 C1102 C1103 C1104 C1105 C1107 C1201 C1202 C1203 C1204 C1205 C1207 C1301 C1302 C1303 C1304 C1305 C1307 C1401 C1402 C1403 C1404 C1405 C1407 C1501 C1502 C1503 C1504 C1505 C1507 C1509 C1510 C1601 C1602 C1603 C1604 C1605 C1607 C1609 C1610 C1701 C1702 C1703 C1704 C1705 C1707 C1709 C1710 C1801 C1802 C1803 C1804 C1805 C1806 C1807 C1808 C1809 C1810
- 3 BED: 5
- C105 C205 C305 C405 C505
- STUDIO: 9
- C610 C710 C810 C910 C1010 C1110 C1210 C1310 C1410

GOLD : 18 APARTMENTS

- 1 BED: 0
- 2 BED: 15
- 3 BED: 3
- C1508 C1608 C1708

- KEY:**
- 1 BED / STUDIO
 - 2 BED
 - 3 BED
 - B: BALCONY
 - WG: WINTER GARDEN
 - POS: PRIVATE OPEN SPACE
 - SL: SKYLIGHT
 - ADAPTABLE UNIT

TOTAL : 180 APARTMENTS



Department of Planning
and Environment

Issued under the Environmental Planning and Assessment Act 1979
Approved Application No: SSD 11429726

Granted on: 1 August 2022

Signed: AW Sheet No: 86 of 238

1 TOWER C - LEVEL 14
1:100

Amendments			Amendments			Consultant		Client		Project Title	
Issue	Description	Date	Issue	Description	Date	Structural Engineer / Civil	TTW	Billbergia Group Pty Ltd		Eden Street Arncliffe	
1	ISSUED FOR CONSULTANTS	16/11/2020				Level 6, 73 Miller Street, North Sydney		Suite 101, 25 Angus St,			
2	ISSUED FOR INFORMATION	08/03/2021				NSW 2060		Meadowbank, NSW, 2114			
3	ISSUED FOR CLIENTS SIGN OFF	06/04/2021				Consultant					
A	ISSUED TO BASIX	28/04/2021									
B	ISSUED FOR DA	28/05/2021									
C	ISSUED FOR DA	01/07/2021									
D	ISSUED FOR REVIEW	08/11/2021									
E	ISSUED FOR DA	22/12/2021									
	ISSUED FOR DA RFI	25/03/2022									

Amendments			Consultant		Client		Project Title	
Issue	Description	Date	Structural Engineer / Civil	TTW	Billbergia Group Pty Ltd		Eden Street Arncliffe	
1	ISSUED FOR CONSULTANTS	16/11/2020	Level 6, 73 Miller Street, North Sydney		Suite 101, 25 Angus St,			
2	ISSUED FOR INFORMATION	08/03/2021	NSW 2060		Meadowbank, NSW, 2114			
3	ISSUED FOR CLIENTS SIGN OFF	06/04/2021	Consultant					
A	ISSUED TO BASIX	28/04/2021						
B	ISSUED FOR DA	28/05/2021						
C	ISSUED FOR DA	01/07/2021						
D	ISSUED FOR REVIEW	08/11/2021						
E	ISSUED FOR DA	22/12/2021						
	ISSUED FOR DA RFI	25/03/2022						

Amendments			Consultant		Client		Project Title	
Issue	Description	Date	Structural Engineer / Civil	TTW	Billbergia Group Pty Ltd		Eden Street Arncliffe	
1	ISSUED FOR CONSULTANTS	16/11/2020	Level 6, 73 Miller Street, North Sydney		Suite 101, 25 Angus St,			
2	ISSUED FOR INFORMATION	08/03/2021	NSW 2060		Meadowbank, NSW, 2114			
3	ISSUED FOR CLIENTS SIGN OFF	06/04/2021	Consultant					
A	ISSUED TO BASIX	28/04/2021						
B	ISSUED FOR DA	28/05/2021						
C	ISSUED FOR DA	01/07/2021						
D	ISSUED FOR REVIEW	08/11/2021						
E	ISSUED FOR DA	22/12/2021						
	ISSUED FOR DA RFI	25/03/2022						

Amendments			Consultant		Client		Project Title	
Issue	Description	Date	Structural Engineer / Civil	TTW	Billbergia Group Pty Ltd		Eden Street Arncliffe	
1	ISSUED FOR CONSULTANTS	16/11/2020	Level 6, 73 Miller Street, North Sydney		Suite 101, 25 Angus St,			
2	ISSUED FOR INFORMATION	08/03/2021	NSW 2060		Meadowbank, NSW, 2114			
3	ISSUED FOR CLIENTS SIGN OFF	06/04/2021	Consultant					
A	ISSUED TO BASIX	28/04/2021						
B	ISSUED FOR DA	28/05/2021						
C	ISSUED FOR DA	01/07/2021						
D	ISSUED FOR REVIEW	08/11/2021						
E	ISSUED FOR DA	22/12/2021						
	ISSUED FOR DA RFI	25/03/2022						

Amendments			Consultant		Client		Project Title	
Issue	Description	Date	Structural Engineer / Civil	TTW	Billbergia Group Pty Ltd		Eden Street Arncliffe	
1	ISSUED FOR CONSULTANTS	16/11/2020	Level 6, 73 Miller Street, North Sydney		Suite 101, 25 Angus St,			
2	ISSUED FOR INFORMATION	08/03/2021	NSW 2060		Meadowbank, NSW, 2114			
3	ISSUED FOR CLIENTS SIGN OFF	06/04/2021	Consultant					
A	ISSUED TO BASIX	28/04/2021						
B	ISSUED FOR DA	28/05/2021						
C	ISSUED FOR DA	01/07/2021						
D	ISSUED FOR REVIEW	08/11/2021						
E	ISSUED FOR DA	22/12/2021						
	ISSUED FOR DA RFI	25/03/2022						

Amendments			Consultant		Client		Project Title	
Issue	Description	Date	Structural Engineer / Civil	TTW	Billbergia Group Pty Ltd		Eden Street Arncliffe	
1	ISSUED FOR CONSULTANTS	16/11/2020	Level 6, 73 Miller Street, North Sydney		Suite 101, 25 Angus St,			
2	ISSUED FOR INFORMATION	08/03/2021	NSW 2060		Meadowbank, NSW, 2114			
3	ISSUED FOR CLIENTS SIGN OFF	06/04/2021	Consultant					
A	ISSUED TO BASIX	28/04/2021						
B	ISSUED FOR DA	28/05/2021						
C	ISSUED FOR DA	01/07/2021						
D	ISSUED FOR REVIEW	08/11/2021						
E	ISSUED FOR DA	22/12/2021						
	ISSUED FOR DA RFI	25/03/2022						

Amendments			Consultant		Client		Project Title	
Issue	Description	Date	Structural Engineer / Civil	TTW	Billbergia Group Pty Ltd		Eden Street Arncliffe	
1	ISSUED FOR CONSULTANTS	16/11/2020	Level 6, 73 Miller Street, North Sydney		Suite 101, 25 Angus St,			
2	ISSUED FOR INFORMATION	08/03/2021	NSW 2060		Meadowbank, NSW, 2114			
3	ISSUED FOR CLIENTS SIGN OFF	06/04/2021	Consultant					
A	ISSUED TO BASIX	28/04/2021						
B	ISSUED FOR DA	28/05/2021						
C	ISSUED FOR DA	01/07/2021						
D	ISSUED FOR REVIEW	08/11/2021						
E	ISSUED FOR DA	22/12/2021						
	ISSUED FOR DA RFI	25/03/2022						

Amendments			Consultant		Client		Project Title	
Issue	Description	Date	Structural Engineer / Civil	TTW	Billbergia Group Pty Ltd		Eden Street Arncliffe	
1	ISSUED FOR CONSULTANTS	16/11/2020	Level 6, 73 Miller Street, North Sydney		Suite 101, 25 Angus St,			
2	ISSUED FOR INFORMATION	08/03/2021	NSW 2060		Meadowbank, NSW, 2114			
3	ISSUED FOR CLIENTS SIGN OFF	06/04/2021	Consultant					
A	ISSUED TO BASIX	28/04/2021						
B	ISSUED FOR DA	28/05/2021						
C	ISSUED FOR DA	01/07/2021						
D	ISSUED FOR REVIEW	08/11/2021						
E	ISSUED FOR DA	22/12/2021						
	ISSUED FOR DA RFI	25/03/2022						

Amendments			Consultant		Client		Project Title	
Issue	Description	Date	Structural Engineer / Civil	TTW	Billbergia Group Pty Ltd		Eden Street Arncliffe	
1	ISSUED FOR CONSULTANTS	16/11/2020	Level 6, 73 Miller Street, North Sydney		Suite 101, 25 Angus St,			
2	ISSUED FOR INFORMATION	08/03/2021	NSW 2060		Meadowbank, NSW, 2114			
3	ISSUED FOR CLIENTS SIGN OFF	06/04/2021	Consultant					
A	ISSUED TO BASIX	28/04/2021						
B	ISSUED FOR DA	28/05/2021						
C	ISSUED FOR DA	01/07/2021						
D	ISSUED FOR REVIEW	08/11/2021						
E	ISSUED FOR DA	22/12/2021						
	ISSUED FOR DA RFI	25/03/2022						

Amendments			Consultant		Client		Project Title	
Issue	Description	Date	Structural Engineer / Civil	TTW	Billbergia Group Pty Ltd		Eden Street Arncliffe	
1	ISSUED FOR CONSULTANTS	16/11/2020	Level 6, 73 Miller Street, North Sydney		Suite 101, 25 Angus St,			
2	ISSUED FOR INFORMATION	08/03/2021	NSW 2060		Meadowbank, NSW, 2114			
3	ISSUED FOR CLIENTS SIGN OFF	06/04/2021	Consultant					
A	ISSUED TO BASIX	28/04/2021						
B	ISSUED FOR DA	28/05/2021						
C	ISSUED FOR DA	01/07/2021						
D	ISSUED FOR REVIEW	08/11/2021						
E	ISSUED FOR DA	22/12/2021						
	ISSUED FOR DA RFI	25/03/2022						

Amendments			Consultant		Client		Project Title	
Issue	Description	Date	Structural Engineer / Civil	TTW	Billbergia Group Pty Ltd		Eden Street Arncliffe	
1	ISSUED FOR CONSULTANTS	16/11/2020	Level 6, 73 Miller Street, North Sydney		Suite 101, 25 Angus St,			
2	ISSUED FOR INFORMATION	08/03/2021	NSW 2060		Meadowbank, NSW, 2114			
3	ISSUED FOR CLIENTS SIGN OFF	06/04/2021	Consultant					
A	ISSUED TO BASIX	28/04/2021						
B	ISSUED FOR DA	28/05/2021						
C	ISSUED FOR DA	01/07/2021						
D	ISSUED FOR REVIEW	08/11/2021						
E	ISSUED FOR DA	22/12/2021						
	ISSUED FOR DA RFI	25/03/2022						

Amendments			Consultant		Client		Project Title	
Issue	Description	Date	Structural Engineer / Civil	TTW	Billbergia Group Pty Ltd		Eden Street Arncliffe	
1	ISSUED FOR CONSULTANTS	16/11/2020	Level 6, 73 Miller Street, North Sydney		Suite 101, 25 Angus St,			
2	ISSUED FOR INFORMATION	08/03/2021	NSW 2060		Meadowbank, NSW, 2114			
3	ISSUED FOR CLIENTS SIGN OFF	06/04/2021	Consultant					
A	ISSUED TO BASIX	28/04/2021						
B	ISSUED FOR DA	28/05/2021						
C	ISSUED FOR DA	01/07/2021						
D	ISSUED FOR REVIEW	08/11/2021						
E	ISSUED FOR DA	22/12/2021						
	ISSUED FOR DA RFI	25/03/2022						

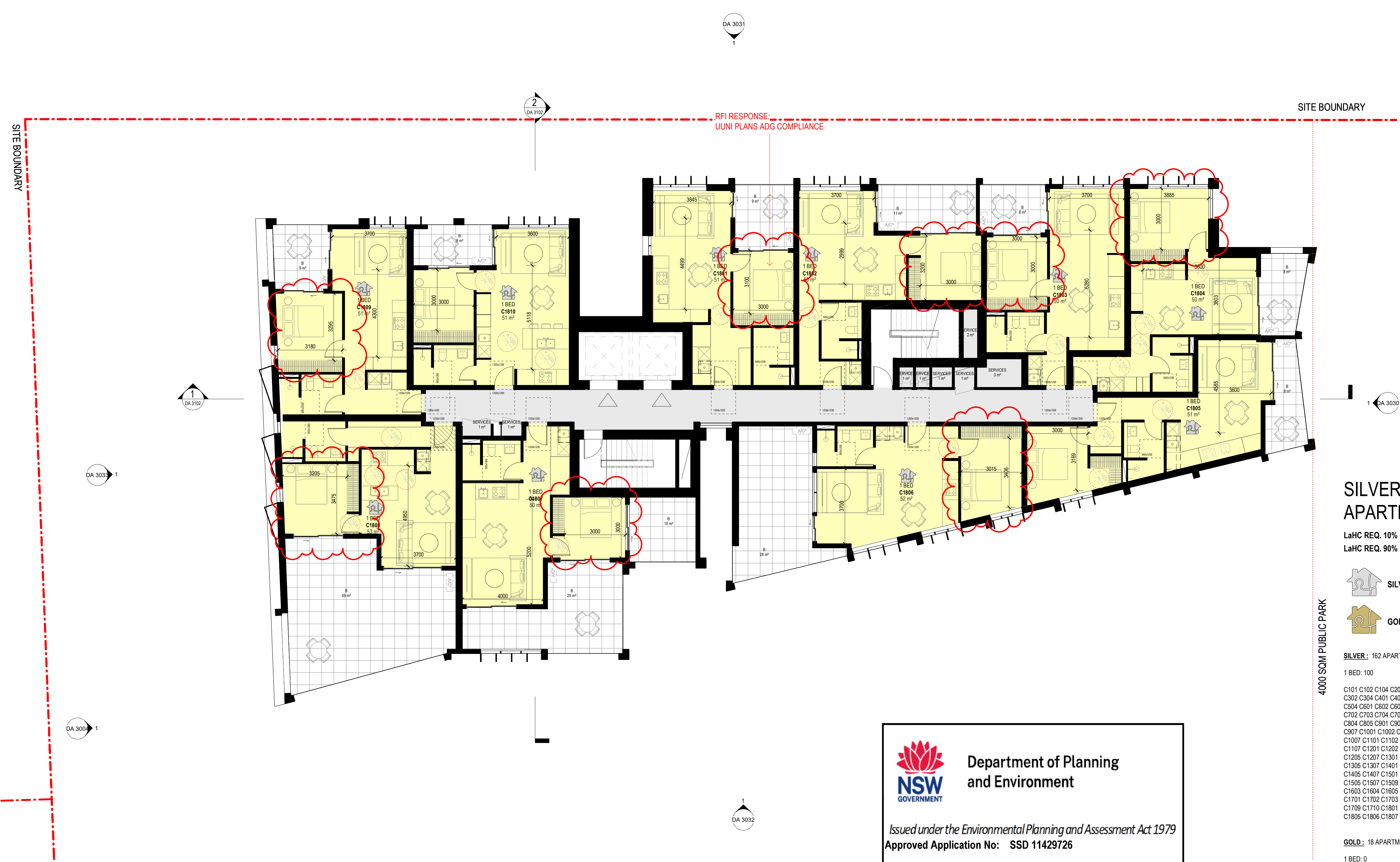
Amendments			Consultant		Client		Project Title	
Issue	Description	Date	Structural Engineer / Civil	TTW	Billbergia Group Pty Ltd		Eden Street Arncliffe	
1	ISSUED FOR CONSULTANTS	16/11/2020	Level 6, 73 Miller Street, North Sydney		Suite 101, 25 Angus St,			
2	ISSUED FOR INFORMATION	08/03/2021	NSW 2060		Meadowbank, NSW, 2114			
3	ISSUED FOR CLIENTS SIGN OFF	06/04/2021	Consultant					
A	ISSUED TO BASIX	28/04/2021						
B	ISSUED FOR DA	28/05/2021						
C	ISSUED FOR DA	01/07/2021						
D	ISSUED FOR REVIEW	08/11/2021						
E	ISSUED FOR DA	22/12/2021						
	ISSUED FOR DA RFI	25/03/2022						

Amendments			Consultant		Client		Project Title	
Issue	Description	Date	Structural Engineer / Civil	TTW	Billbergia Group Pty Ltd		Eden Street Arncliffe	
1	ISSUED FOR CONSULTANTS	16/11/2020	Level 6, 73 Miller Street, North Sydney		Suite 101, 25 Angus St,			
2	ISSUED FOR INFORMATION	08/03/2021	NSW 2060		Meadowbank, NSW, 2114			
3	ISSUED FOR CLIENTS SIGN OFF	06/04/2021	Consultant					
A	ISSUED TO BASIX	28/04/2021						
B	ISSUED FOR DA	28/05/2021						
C	ISSUED FOR DA	01/07/2021						
D	ISSUED FOR REVIEW	08/11/2021						
E	ISSUED FOR DA	22/12/2021						
	ISSUED FOR DA RFI	25/03/2022						

Amendments			Consultant		Client		Project Title	
Issue	Description	Date	Structural Engineer / Civil	TTW	Billbergia Group Pty Ltd		Eden Street Arncliffe	</



4/05/2022 10:22:38 PM



1 TOWER C - LEVEL 18
1:100

 **Department of Planning and Environment**

Issued under the Environmental Planning and Assessment Act 1979
Approved Application No: SSD 11429726

Granted on: 1 August 2022



Signed: AW **Sheet No: 90 of 238**

SILVER AND GOLD LEVEL APARTMENTS

LaHC REQ. 10% GFA TO BE GOLD
LaHC REQ. 90% GFA TO BE SILVER

TOTAL BUILDING GFA = 11911 m²
10% of 11911 m² = 1191.1

TOTAL GFA ALLOCATED TO GOLD LEVEL APARTMENT = 1191.5 m²

-  **SILVER LEVEL PERFORMANCE**
-  **GOLD LEVEL PERFORMANCE**

- SILVER: 162 APARTMENTS**
- 1 BED: 100
2 BED: 48
- C101 C102 C104 C201 C202 C204 C301 C302 C304 C401 C402 C404 C501 C502 C504 C601 C602 C603 C604 C605 C701 C702 C703 C704 C705 C801 C802 C803 C804 C805 C901 C902 C903 C904 C905 C907 C1001 C1002 C1003 C1004 C1005 C1007 C1101 C1102 C1103 C1104 C1105 C1107 C1201 C1202 C1203 C1204 C1205 C1207 C1301 C1302 C1303 C1304 C1305 C1307 C1401 C1402 C1403 C1404 C1405 C1407 C1501 C1502 C1503 C1504 C1505 C1507 C1508 C1510 C1601 C1602 C1603 C1604 C1605 C1607 C1609 C1610 C1701 C1702 C1703 C1704 C1705 C1707 C1709 C1710 C1801 C1802 C1803 C1804 C1805 C1806 C1807 C1808 C1809 C1810
- C107 C108 C109 C207 C208 C209 C307 C308 C309 C407 C408 C409 C507 C508 C509 C606 C607 C608 C609 C706 C707 C708 C709 C806 C807 C808 C809 C906 C908 C909 C1006 C1008 C1009 C1106 C1108 C1109 C1206 C1208 C1209 C1306 C1308 C1309 C1406 C1408 C1409 C1506 C1606 C1706
- 3 BED: 5
C105 C205 C305 C405 C505
- STUDIO: 9
C610 C710 C810 C910 C1010 C1110 C1210 C1310 C1410

- GOLD: 18 APARTMENTS**
- 1 BED: 0
2 BED: 15
3 BED: 3
- C103 C106 C110 C203 C206 C210 C303 C306 C310 C403 C406 C410 C503 C506 C510
- C1508 C1608 C1708

- KEY:**
- 1 BED / STUDIO
2 BED
3 BED
- B: BALCONY
WG: WINTER GARDEN
POS: PRIVATE OPEN SPACE
SL: SKYLIGHT
ADAPTABLE UNIT

TOTAL: 180 APARTMENTS

Amendments		
Issue	Description	Date
1	ISSUED FOR INFORMATION	08/03/2021
2	ISSUED FOR INFORMATION	23/03/2021
3	ISSUED FOR INFORMATION	30/03/2021
4	ISSUED FOR CLIENT'S SIGN OFF	06/04/2021
5	ISSUED TO BASIX	28/04/2021
A	ISSUED FOR DA	28/05/2021
B	ISSUED FOR REVIEW	08/11/2021
C	ISSUED FOR DA	22/12/2021
D	ISSUED FOR DA RFI	25/03/2022

Amendments		
Issue	Description	Date
1	ISSUED FOR INFORMATION	08/03/2021
2	ISSUED FOR INFORMATION	23/03/2021
3	ISSUED FOR INFORMATION	30/03/2021
4	ISSUED FOR CLIENT'S SIGN OFF	06/04/2021
5	ISSUED TO BASIX	28/04/2021
A	ISSUED FOR DA	28/05/2021
B	ISSUED FOR REVIEW	08/11/2021
C	ISSUED FOR DA	22/12/2021
D	ISSUED FOR DA RFI	25/03/2022

Consultant	
Structural Engineer / Civil	TTW
Level 6, 73 Miller Street, North Sydney NSW 2060	
Mechanical / Acoustic / Fire Engineer	STANTEC
Level 6, Building B, 207 Pacific Highway St Leonards NSW 2065	
Hydraulics	JHA
Level 23, 101 Miller Street, North Sydney, NSW 2060	

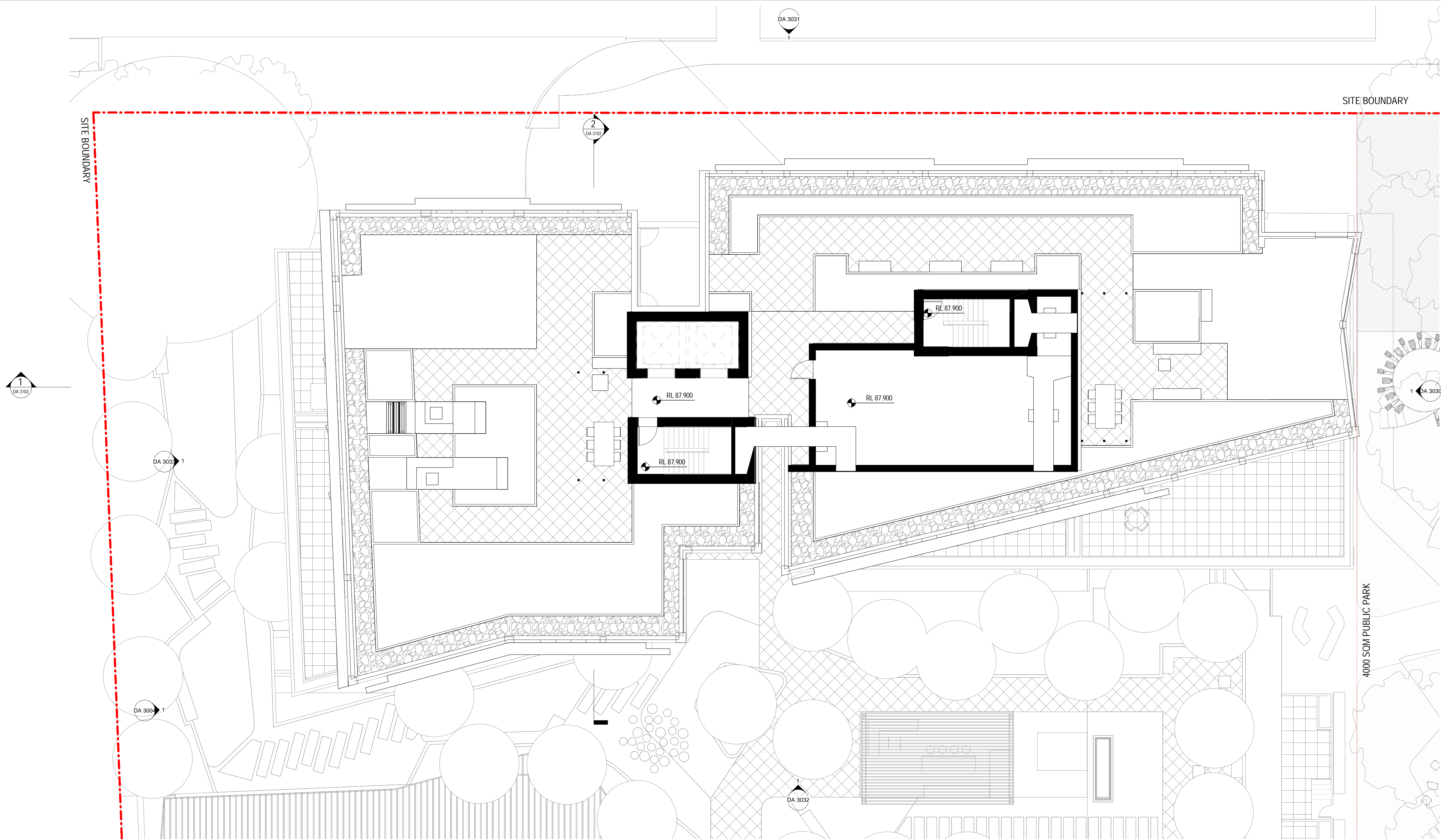
Client	
Billbergia Group Pty Ltd	
Suite 101, 25 Angus St, Meadowbank, NSW, 2114	
Billbergia	
creating communities®	

Project Title	
Eden Street Arncliffe	
Drawing Title	
TOWER C - LEVEL 18	
Group GSA Pty Ltd ABN 76 002 113 779 Level 7, 80 William St East Sydney NSW Australia 2011 www.groupgsa.com	
T +612 9361 4144 F +612 9332 3458	
architecture interior design urban design landscape nom architect Lisa-Maree Carrigan 7568	

Project Title	
Eden Street Arncliffe	
Drawing Title	
TOWER C - LEVEL 18	
This drawing is the copyright of Group GSA Pty Ltd and may not be altered, reproduced or transmitted in any form or by any means in part or in whole without the written permission of Group GSA Pty Ltd.	
All levels and dimensions are to be checked and verified on site prior to the commencement of any work, making of shop drawings or fabrication of components.	
Do not scale drawings. Use figured Dimensions.	

DA SUBMISSION			
Plotted and checked by	PDS		
Verified	PDS	Approved	LMC
Drawing Created (date)		Drawing Created (by)	JK, SM, AR, EC, AF
			09/02/20
Scale	Project No	Drawing No	Issue
As indicated	180319	DA 2318	D

4/05/2022 10:23:37 PM



1 TOWER C - ROOF GARDEN

1:100



Department of Planning
and Environment

Issued under the Environmental Planning and Assessment Act 1979

Approved Application No: SSD 11429726

Granted on: 1 August 2022

Signed: AW

Sheet No: 91 of 238

Amendments			Amendments		
Issue	Description	Date	Issue	Description	Date
1	ISSUED FOR INFORMATION	30/03/2021			
2	ISSUED FOR CLIENT'S SIGN OFF	06/04/2021			
3	ISSUED TO BASIX	28/04/2021			
A	ISSUED FOR DA	28/05/2021			
B	ISSUED FOR REVIEW	08/11/2021			
C	ISSUED FOR DA	22/12/2021			

Consultant	
Structural Engineer / Civil Level 6, 73 Miller Street, North Sydney NSW 2060	TTW
Consultant	
Mechanical / Acoustic / Fire Engineer Level 6, Building B, 207 Pacific Highway St Leonards NSW 2065	STANTEC
Consultant	
Hydraulics Level 23, 101 Miller Street, North Sydney, NSW 2060	JHA

Client	
Billbergia Group Pty Ltd Suite 101, 25 Angus St, Meadowbank, NSW, 2114	



Group GSA Pty Ltd ABN 76 002 113 779
Level 7, 80 William St East Sydney NSW
Australia 2011
www.groupgsa.com
T +612 9361 4144 F +612 9332 3458
architecture interior design urban design landscape
nom architect Lisa-Maree Carrigan 7568

Project Title	
Eden Street Arncliffe	

TOWER C - ROOF GARDEN

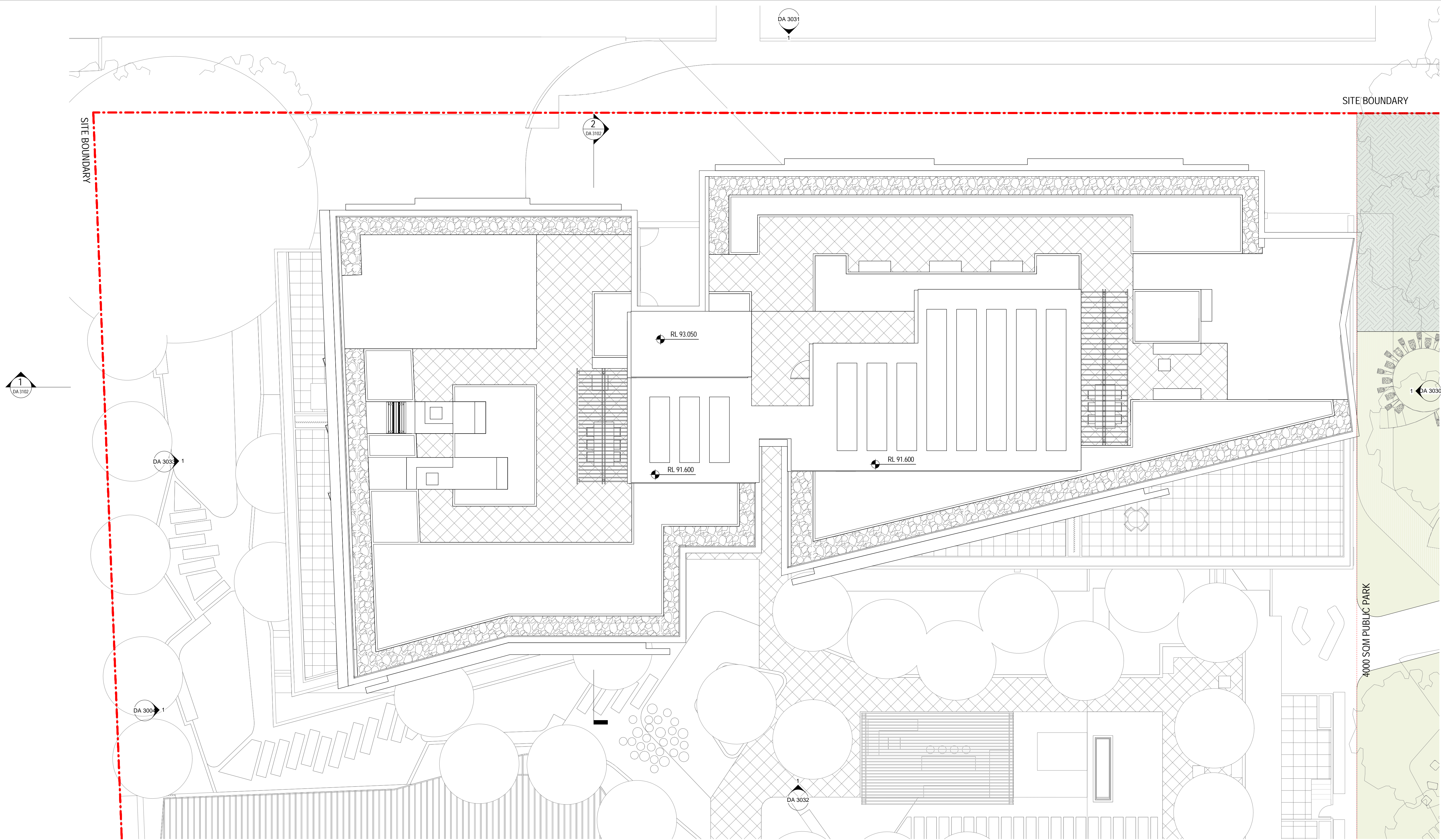
This drawing is the copyright of Group GSA Pty Ltd and may not be altered, reproduced or transmitted in any form or by any means in part or in whole without the written permission of Group GSA Pty Ltd.
All levels and dimensions are to be checked and verified on site prior to the commencement of any work, making of shop drawings or fabrication of components.
Do not scale drawings. Use figured Dimensions.

DA SUBMISSION

Plotted and checked by		PDS
Verified	PDS	Approved LMC
Drawing Created (date)		Drawing Created (by) JK, SM, AR, EC, AF
Scale		Project No
1:100		180319
Drawing No		DA 2319
Issue		C



10/02/2022 1:15:49 PM



1 TOWER C - ROOF
1:100



Department of Planning
and Environment

Issued under the Environmental Planning and Assessment Act 1979

Approved Application No: SSD 11429726

Granted on: 1 August 2022

Signed: AW Sheet No: 92 of 238

Amendments			Amendments		
Issue	Description	Date	Issue	Description	Date
1	ISSUED TO BASIX	28/04/2021			
A	ISSUED FOR REVIEW	08/11/2021			
B	ISSUED FOR DA	22/12/2021			

Consultant		TTW
Structural Engineer / Civil		
Level 6, 73 Miller Street, North Sydney		
NSW 2060		
Consultant		STANTEC
Mechanical / Acoustic / Fire Engineer		
Level 6, Building B, 207 Pacific Highway		
St Leonards NSW 2065		
Consultant		JHA
Hydraulics		
Level 23, 101 Miller Street, North Sydney,		
NSW 2060		

Client	
Billbergia Group Pty Ltd Suite 101, 25 Angus St, Meadowbank, NSW, 2114	
	
Billbergia creating communities®	

GROUP GSA	
Group GSA Pty Ltd ABN 76 002 113 779 Level 7, 80 William St East Sydney NSW Australia 2011 www.groupgsa.com	
T +612 9361 4144 F +612 9332 3458	
architecture interior design urban design landscape nom architect Lisa-Maree Carrigan 7568	

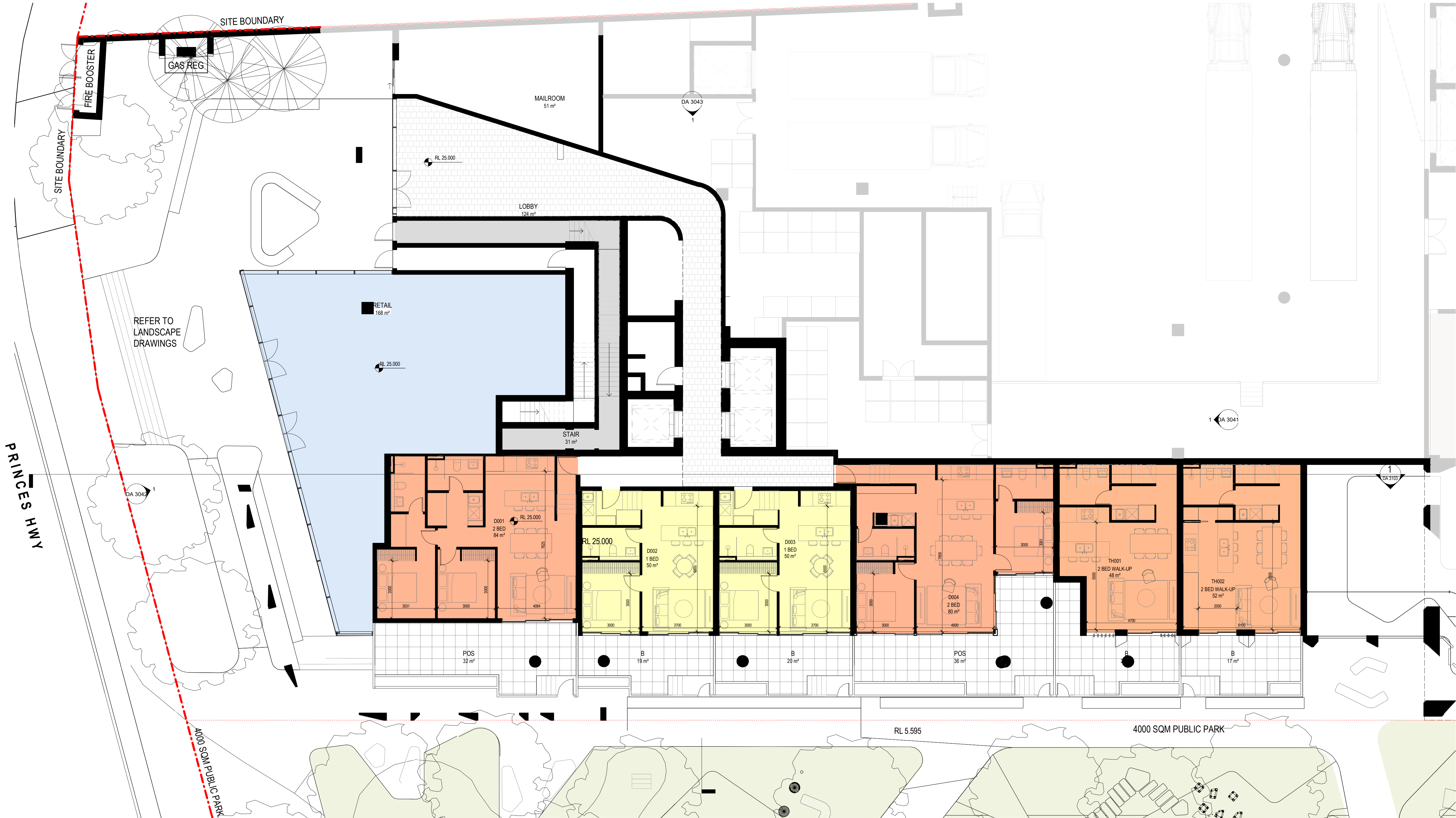
Project Title	
Eden Street Arncliffe	
Drawing Title	
TOWER C - ROOF	
This drawing is the copyright of Group GSA Pty Ltd and may not be altered, reproduced or transmitted in any form or by any means in part or in whole without the written permission of Group GSA Pty Ltd. All levels and dimensions are to be checked and verified on site prior to the commencement of any work, making of shop drawings or fabrication of components. Do not scale drawings. Use figured Dimensions.	

10/2/2023 11:53 PM

DA SUBMISSION			
Plotted and checked by PDS			
Verified	PDS	Approved	LMC
Drawing Created (date)		Drawing Created (by) JK, SM, AR, EC, AF	
16/12/21			
Scale	Project No	Drawing No	Issue
1 : 100	180319	DA 2320	B



10/2/2022 1:16:53 PM



1 TOWER D - GROUND
1:100

Amendments		
Issue	Description	Date
1	ISSUED FOR INFORMATION	08/03/2021
2	ISSUED FOR CLIENT'S SIGN OFF	09/04/2021
3	ISSUED TO BASIC	28/04/2021
4	ISSUED FOR INFORMATION	11/05/2021
A	ISSUED FOR DA	28/05/2021
B	ISSUED FOR DA	01/07/2021
C	ISSUED FOR REVIEW	08/11/2021
D	ISSUED FOR DA	22/12/2021
E	ISSUED FOR DA RFI	25/03/2022



Department of Planning
and Environment

Issued under the Environmental Planning and Assessment Act 1979
Approved Application No: SSD 11429726

Granted on: 1 August 2022

Signed: AW Sheet No: 93 of 238

Consultant
Structural Engineer / Civil
Level 6, 73 Miller Street, North Sydney
NSW 2060
Consultant
Mechanical / Acoustic / Fire Engineer
Level 6, Building B, 207 Pacific Highway
St Leonards NSW 2065
Consultant
Hydraulics
Level 23, 101 Miller Street, North Sydney,
NSW 2060

TTW
STANTEC
JHA

Client
Billbergia Group Pty Ltd
Suite 101, 25 Angus St,
Meadowbank, NSW, 2114



Group GSA Pty Ltd ABN 76 002 113 779
Level 7, 60 William St East Sydney NSW
Australia 2011
www.groupgsa.com

T +612 9361 4144 F +612 9332 3458
architecture interior design urban design landscape
nom architect Lisa-Maree Carrigan 7568

Project Title
Eden Street Arncliffe

Drawing Title

TOWER D - GROUND

This drawing is the copyright of Group GSA Pty Ltd and may not be altered, reproduced or transmitted in any form or by any means in part or in whole without the written permission of Group GSA Pty Ltd.
All levels and dimensions are to be checked and verified on site prior to the commencement of any work, making of shop drawings or fabrication of components.
Do not scale drawings. Use figured Dimensions.

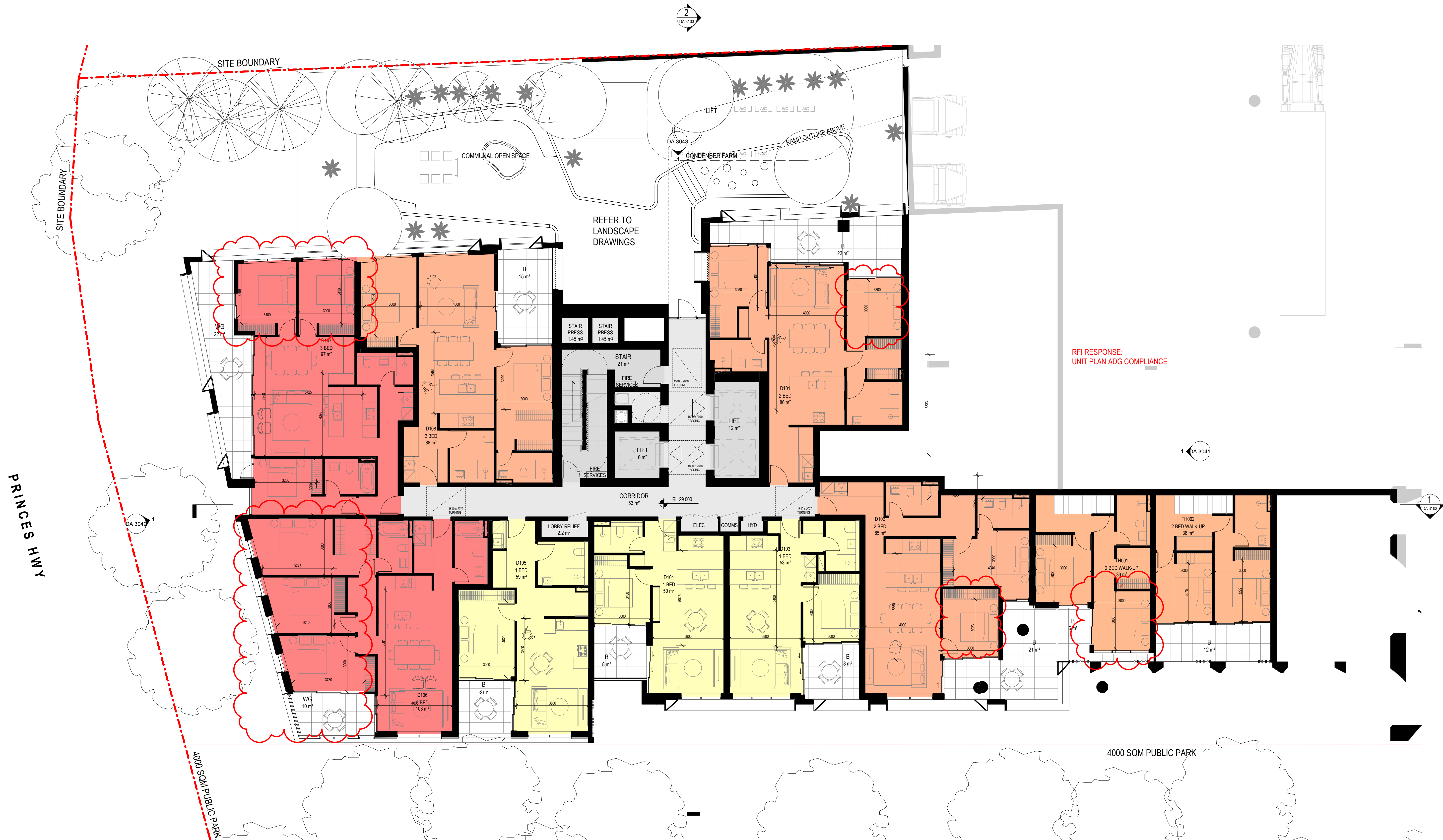
KEY:

1 BED / STUDIO	B: BALCONY
2 BED	WG: WINTER GARDEN
3 BED	POS: PRIVATE OPEN SPACE
	SL: SKYLIGHT
	ADAPTABLE UNIT

DA SUBMISSION

Plotted and checked by		PDS	
Verified	PDS	Approved	LMC
Drawing Created (date)		Drawing Created (by) JK, SM, AR, EC, AF	
09/02/20			
Scale	Project No	Drawing No	Issue
1 : 100	180319	DA 2400	E

4/05/2022 10:25:28 PM



1 TOWER D - LEVEL 1
1:100

Amendments			
Issue	Description	Date	
1	ISSUED FOR INFORMATION	08/03/2021	
2	ISSUED FOR CLIENT'S SIGN OFF	06/04/2021	
3	ISSUED TO BASIX	28/04/2021	
4	ISSUED FOR INFORMATION	11/05/2021	
A	ISSUED FOR DA	28/05/2021	
B	ISSUED FOR REVIEW	08/11/2021	
C	ISSUED FOR DA	22/12/2021	
D	ISSUED FOR DA RFI	25/03/2022	



Department of Planning
and Environment

Issued under the Environmental Planning and Assessment Act 1979
Approved Application No: SSD 11429726

Granted on: 1 August 2022

Signed: AW

Sheet No: 94 of 238

Consultant
Structural Engineer / Civil
Level 6, 73 Miller Street, North Sydney
NSW 2060
Consultant
TTW
Mechanical / Acoustic / Fire Engineer
Level 6, Building B, 207 Pacific Highway
St Leonards NSW 2065
Consultant
STANTEC
Hydraulics
Level 23, 101 Miller Street, North Sydney,
NSW 2060
JHA

Client
Billbergia Group Pty Ltd
Suite 101, 25 Angus St,
Meadowbank, NSW, 2114



Group GSA Pty Ltd ABN 76 002 113 779
Level 7, 60 William St East Sydney NSW
Australia 2011
www.groupgsa.com

T +612 9361 4144 F +612 9332 3458

architecture interior design urban design landscape
nom architect Lisa-Maree Carrigan 7568

Project Title
Eden Street Arncliffe

Drawing Title

TOWER D - LEVEL 1

This drawing is the copyright of Group GSA Pty Ltd and may not be altered, reproduced or transmitted in any form or by any means in part or in whole without the written permission of Group GSA Pty Ltd.
All levels and dimensions are to be checked and verified on site prior to the commencement of any work, making of shop drawings or fabrication of components.
Do not scale drawings. Use figured Dimensions.

KEY:
1 BED / STUDIO
2 BED
3 BED
B: BALCONY
WG: WINTER GARDEN
POS: PRIVATE OPEN SPACE
SL: SKYLIGHT
ADAPTABLE UNIT

DA SUBMISSION

Plotted and checked by		PDS	
Verified	PDS	Approved	LMC
Drawing Created (date)		Drawing Created (by) JK, SM, AR, EC, AF	
09/02/20			
Scale	Project No	Drawing No	Issue
1 : 100	180319	DA 2401	D

4/05/2022 10:26:08 PM




1 TOWER D - LEVEL 2
1: 100

- KEY:**
- 1 BED / STUDIO
 - 2 BED
 - 3 BED
 - B: BALCONY
 - WG: WINTER GARDEN
 - POS: PRIVATE OPEN SPACE
 - SL: SKYLIGHT
 - ADAPTABLE UNIT

DA SUBMISSION

Plotted and checked by		PDS	
Verified	PDS	Approved	LMC
Drawing Created (date)		Drawing Created (by) JK, SM, AR, EC, AF	
09/02/20			
Scale	Project No	Drawing No	Issue
1 : 100	180319	DA 2402	D

Issue	Description	Date
1	ISSUED FOR INFORMATION	08/03/2021
2	ISSUED FOR CLIENT'S SIGN OFF	06/04/2021
3	ISSUED TO BASIX	28/04/2021
4	ISSUED FOR INFORMATION	11/05/2021
A	ISSUED FOR DA	28/05/2021
B	ISSUED FOR REVIEW	08/11/2021
C	ISSUED FOR DA	22/12/2021
D	ISSUED FOR DA RFI	25/03/2022



Department of Planning and Environment

Issued under the Environmental Planning and Assessment Act 1979

Approved Application No: SSD 11429726

Granted on: 1 August 2022

Signed: AW

Sheet No: 95 of 238

Consultant

Structural Engineer / Civil
Level 6, 73 Miller Street, North Sydney
NSW 2060

TTW

Mechanical / Acoustic / Fire Engineer
Level 6, Building B, 207 Pacific Highway
St Leonards NSW 2065

STANTEC

Hydraulics
Level 23, 101 Miller Street, North Sydney,
NSW 2060

JHA

Client

Billbergia Group Pty Ltd
Suite 101, 25 Angus St,
Meadowbank, NSW, 2114

Billbergia
creating communities®

GROUP GSA

Group GSA Pty Ltd ABN 76 002 113 779
Level 7, 80 William St East Sydney NSW
Australia 2011
www.groupgsa.com

T +612 9361 4144 F +612 9332 3458

architecture interior design urban design landscape
nom architect Lisa-Maree Carrigan 7568

Project Title

Eden Street Arncliffe

Drawing Title

TOWER D - LEVEL 2


This drawing is the copyright of Group GSA Pty Ltd and may not be altered, reproduced or transmitted in any form or by any means in part or in whole without the written permission of Group GSA Pty Ltd.

All levels and dimensions are to be checked and verified on site prior to the commencement of any work, making of shop drawings or fabrication of components. Do not scale drawings. Use figured Dimensions.

4/05/2022 10:26:57 PM



1 TOWER D - LEVEL 3
1 : 100

 **Department of Planning and Environment**

Issued under the Environmental Planning and Assessment Act 1979
Approved Application No: SSD 11429726

Granted on: 1 August 2022

Signed: AW **Sheet No: 96 of 238**

- KEY:**
- 1 BED / STUDIO
 - 2 BED
 - 3 BED
 - BALCONY
 - WG: WINTER GARDEN
 - POS: PRIVATE OPEN SPACE
 - SL: SKYLIGHT
 - ADAPTABLE UNIT

DA SUBMISSION

Amendments			Amendments		
Issue	Description	Date	Issue	Description	Date
1	ISSUED FOR INFORMATION	08/03/2021			
2	ISSUED FOR INFORMATION	31/03/2021			
3	ISSUED FOR CLIENT'S SIGN OFF	06/04/2021			
4	ISSUED TO BASIX	28/04/2021			
5	ISSUED FOR INFORMATION	11/05/2021			
A	ISSUED FOR DA	28/05/2021			
B	ISSUED FOR REVIEW	08/11/2021			
C	ISSUED FOR DA	22/12/2021			
D	ISSUED FOR DA RFI	25/03/2022			

Consultant		Client
Structural Engineer / Civil	Billbergia Group Pty Ltd	
Level 6, 73 Miller Street, North Sydney NSW 2060	Suite 101, 25 Angus St, Meadowbank, NSW, 2114	
Consultant		
Mechanical / Acoustic / Fire Engineer	STANTEC	
Level 6, Building B, 207 Pacific Highway St Leonards NSW 2065		
Consultant		
Hydraulics	JHA	
Level 23, 101 Miller Street, North Sydney, NSW 2060		

Client		Project Title
Billbergia Group Pty Ltd	Eden Street Arncliffe	
Suite 101, 25 Angus St, Meadowbank, NSW, 2114		
Drawing Title		
TOWER D - LEVEL 3		

GROUP GSA

Group GSA Pty Ltd ABN 76 002 113 779
Level 7, 60 William St East Sydney NSW
Australia 2011
www.groupgsa.com

T +612 9361 4144 F +612 9332 3458

architecture interior design urban design landscape
nom architect Lisa-Maree Carrigan 7568

This drawing is the copyright of Group GSA Pty Ltd and may not be altered, reproduced or transmitted in any form or by any means in part or in whole without the written permission of Group GSA Pty Ltd.

All levels and dimensions are to be checked and verified on site prior to the commencement of any work, making of shop drawings or fabrication of components. Do not scale drawings. Use figured Dimensions.

Scale	Project No	Drawing No	Issue
1 : 100	180319	DA 2403	D



1 TOWER D - LEVEL 5
1:100



Department of Planning
and Environment

Issued under the Environmental Planning and Assessment Act 1979
Approved Application No: SSD 11429726

Granted on: 1 August 2022

Signed: AW

Sheet No: 98 of 238

KEY:

1 BED / STUDIO
2 BED
3 BED

B: BALCONY
WG: WINTER GARDEN
POS: PRIVATE OPEN SPACE
SL: SKYLIGHT
ADAPTABLE UNIT

DA SUBMISSION

Plotted and checked by PDS
Verified PDS Approved LMC
Drawing Created (date) Drawing Created (by) JK, SM, AR, EC, AF
Scale Project No Drawing No Issue
1:100 180319 DA 2405 D

Amendments			Amendments		
Issue	Description	Date	Issue	Description	Date
1	ISSUED FOR CLIENT'S SIGN OFF	06/04/2021			
2	ISSUED TO BASIX	28/04/2021			
A	ISSUED FOR DA	28/05/2021			
B	ISSUED FOR REVIEW	08/11/2021			
C	ISSUED FOR DA	22/12/2021			
D	ISSUED FOR DA RFI	25/03/2022			

Consultant
Structural Engineer / Civil
Level 6, 73 Miller Street, North Sydney
NSW 2060
Consultant
Mechanical / Acoustic / Fire Engineer
Level 6, Building B, 207 Pacific Highway
St Leonards NSW 2065
Consultant
Hydraulics
Level 23, 101 Miller Street, North Sydney,
NSW 2060

TTW
STANTEC
JHA

Client
Billbergia Group Pty Ltd
Suite 101, 25 Angus St,
Meadowbank, NSW, 2114

Billbergia
creating communities

GROUP GSA
Group GSA Pty Ltd ABN 76 002 113 779
Level 7, 60 William St East Sydney NSW
Australia 2011
www.groupgsa.com
T +612 9361 4144 F +612 9332 3458
architecture interior design urban design landscape
nom architect Lisa-Maree Carrigan 7568

Project Title
Eden Street Arncliffe
Drawing Title
TOWER D - LEVEL 5
This drawing is the copyright of Group GSA Pty Ltd and may not be altered, reproduced or transmitted in any form or by any means in part or in whole without the written permission of Group GSA Pty Ltd.
All levels and dimensions are to be checked and verified on site prior to the commencement of any work, making of shop drawings or fabrication of components.
Do not scale drawings. Use figured Dimensions.



1 TOWER D - LEVEL 6
1:100

 **Department of Planning and Environment**

Issued under the Environmental Planning and Assessment Act 1979
Approved Application No: SSD 11429726

Granted on: 1 August 2022

Signed: AW **Sheet No: 99 of 238**

- KEY:**
- 1 BED / STUDIO
 - 2 BED
 - 3 BED
 - B: BALCONY
 - WG: WINTER GARDEN
 - POS: PRIVATE OPEN SPACE
 - SL: SKYLIGHT
 - ADAPTABLE UNIT

DA SUBMISSION

Plotted and checked by		PDS	
Verified	PDS	Approved	LMC
Drawing Created (date)		Drawing Created (by) JK, SM, AR, EC, AF	
09/02/20			
Scale	Project No	Drawing No	Issue
1 : 100	180319	DA 2406	D

Amendments			Amendments		
Issue	Description	Date	Issue	Description	Date
1	ISSUED FOR INFORMATION	08/03/2021			
2	ISSUED FOR CLIENT'S SIGN OFF	06/04/2021			
3	ISSUED TO BASIX	28/04/2021			
4	ISSUED FOR INFORMATION	11/05/2021			
A	ISSUED FOR DA	28/05/2021			
B	ISSUED FOR REVIEW	08/11/2021			
C	ISSUED FOR DA	22/12/2021			
D	ISSUED FOR DA RFI	25/03/2022			

Structural Engineer / Civil
Level 6, 73 Miller Street, North Sydney
NSW 2060
Consultant

Mechanical / Acoustic / Fire Engineer
Level 6, Building B, 207 Pacific Highway
St Leonards NSW 2065
Consultant

Hydraulics
Level 23, 101 Miller Street, North Sydney,
NSW 2060

TTW

STANTEC

JHA

Client
Billbergia Group Pty Ltd
Suite 101, 25 Angus St,
Meadowbank, NSW, 2114

Billbergia
creating communities®

GROUP GSA

Group GSA Pty Ltd ABN 76 002 113 779
Level 7, 60 William St East Sydney NSW
Australia 2011
www.groupgsa.com

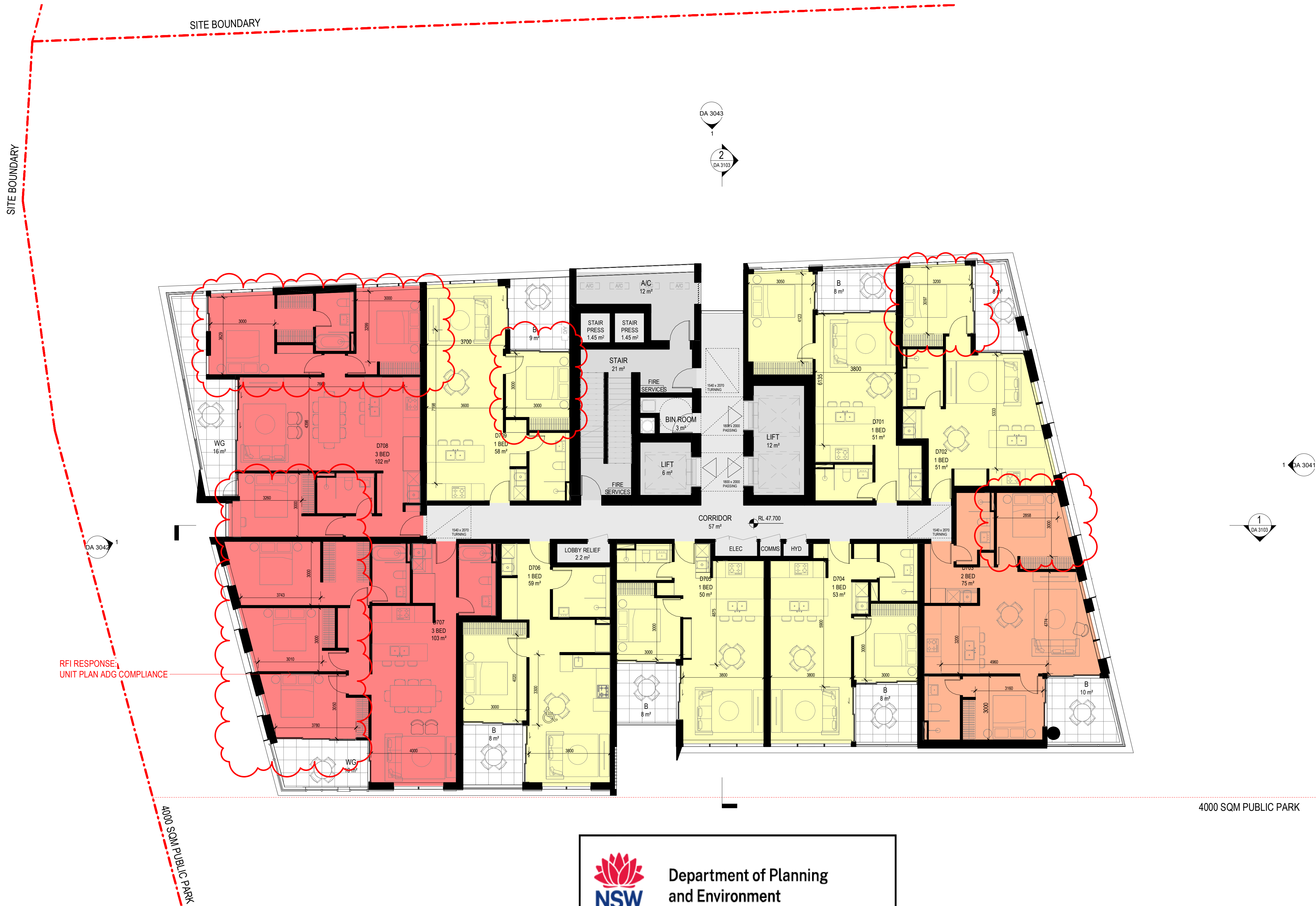
T +612 9361 4144 F +612 9332 3458

architecture interior design urban design landscape
nom architect Lisa-Maree Carrigan 7568

Project Title
Eden Street Arncliffe

Drawing Title
TOWER D - LEVEL 6

This drawing is the copyright of Group GSA Pty Ltd and may not be altered, reproduced or transmitted in any form or by any means in part or in whole without the written permission of Group GSA Pty Ltd.
All levels and dimensions are to be checked and verified on site prior to the commencement of any work, making of shop drawings or fabrication of components.
Do not scale drawings. Use figured Dimensions.



1 TOWER D - LEVEL 7
1 : 100



Department of Planning
and Environment

Issued under the Environmental Planning and Assessment Act 1979

Approved Application No: SSD 11429726

Granted on: 1 August 2022

Signed: AW

Sheet No: 100 of 238

KEY:

1 BED / STUDIO
2 BED
3 BED

B: BALCONY
WG: WINTER GARDEN
POS: PRIVATE OPEN SPACE
SL: SKYLIGHT
ADAPTABLE UNIT



DA SUBMISSION

Plotted and checked by		PDS	
Verified	PDS	Approved	LMC
Drawing Created (date)		Drawing Created (by) JK, SM, AR, EC, AF	
09/02/20			
Scale	Project No	Drawing No	Issue

Amendments			Amendments		
Issue	Description	Date	Issue	Description	Date
1	ISSUED FOR CLIENT'S SIGN OFF	06/04/2021			
2	ISSUED TO BASIX	28/04/2021			
A	ISSUED FOR DA	28/05/2021			
B	ISSUED FOR REVIEW	08/11/2021			
C	ISSUED FOR DA	22/12/2021			
D	ISSUED FOR DA RFI	25/03/2022			

Consultant	Client
Structural Engineer / Civil Level 6, 73 Miller Street, North Sydney NSW 2060 Consultant	Billbergia Group Pty Ltd Suite 101, 25 Angus St, Meadowbank, NSW, 2114
Mechanical / Acoustic / Fire Engineer Level 6, Building B, 207 Pacific Highway St Leonards NSW 2065 Consultant	TTW
Hydraulics Level 23, 101 Miller Street, North Sydney, NSW 2060	STANTEC
	JHA

Client
Billbergia Group Pty Ltd Suite 101, 25 Angus St, Meadowbank, NSW, 2114



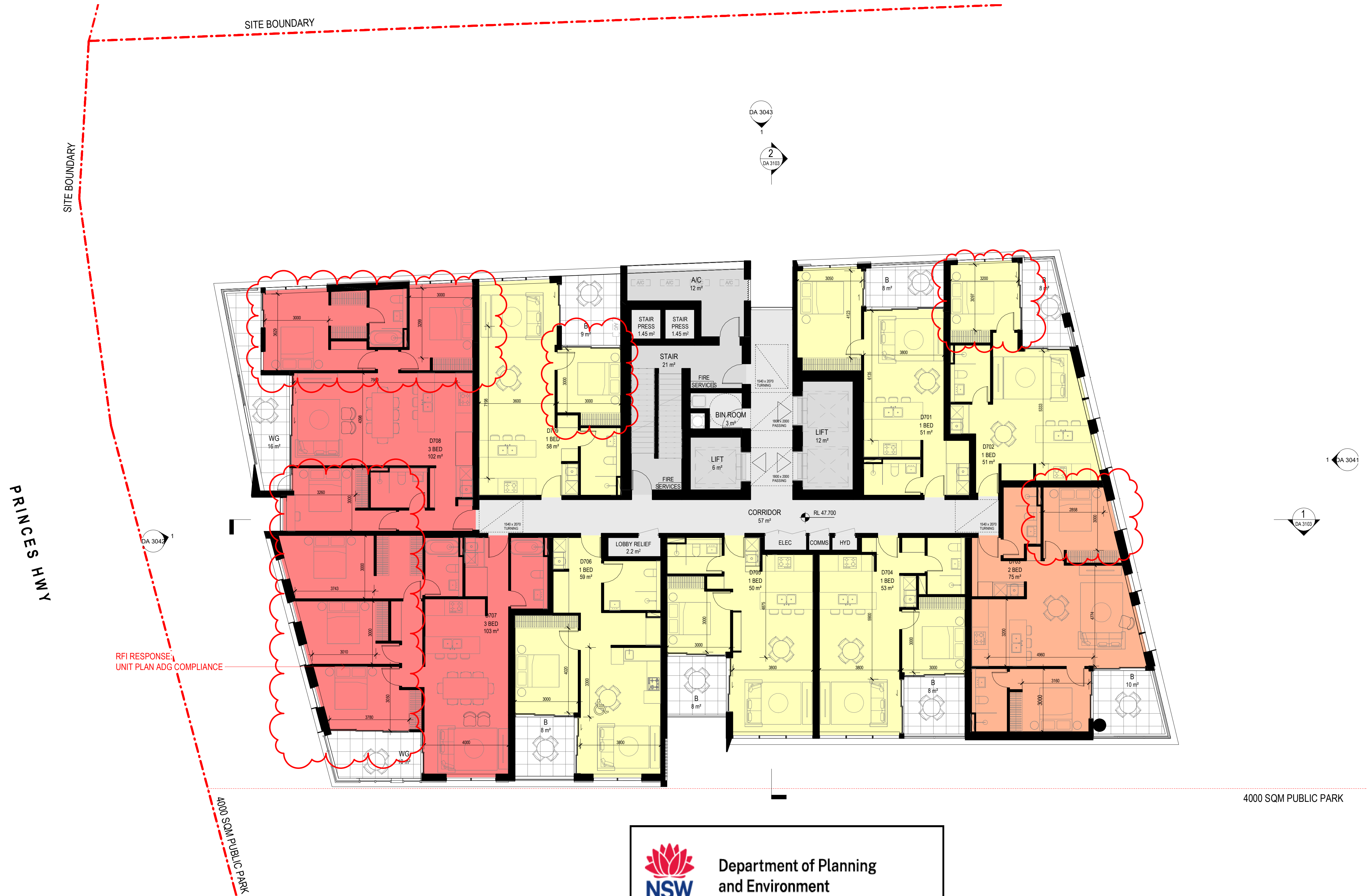
Group GSA Pty Ltd ABN 76 002 113 779
Level 7, 60 William St East Sydney NSW
Australia 2011
www.groupgsa.com
T +612 9361 4144 F +612 9332 3458
architecture interior design urban design landscape
nom architect Lisa-Maree Carrigan 7568

Project Title
Eden Street Arncliffe


Drawing Title

TOWER D - LEVEL 7

This drawing is the copyright of Group GSA Pty Ltd and may not be altered, reproduced or transmitted in any form or by any means in part or in whole without the written permission of Group GSA Pty Ltd.
All levels and dimensions are to be checked and verified on site prior to the commencement of any work, making of shop drawings or fabrication of components.
Do not scale drawings. Use figured Dimensions.



1 TOWER D - LEVEL 8
1:100

 **Department of Planning and Environment**

Issued under the Environmental Planning and Assessment Act 1979
Approved Application No: SSD 11429726

Granted on: 1 August 2022

Signed: AW **Sheet No: 101 of 238**

- KEY:**
- 1 BED / STUDIO
 - 2 BED
 - 3 BED
 - B: BALCONY
 - WG: WINTER GARDEN
 - POS: PRIVATE OPEN SPACE
 - SL: SKYLIGHT
 - ADAPTABLE UNIT

DA SUBMISSION

Amendments			Amendments		
Issue	Description	Date	Issue	Description	Date
1	ISSUED FOR CLIENT'S SIGN OFF	06/04/2021			
2	ISSUED TO BASIX	28/04/2021			
A	ISSUED FOR DA	28/05/2021			
B	ISSUED FOR REVIEW	08/11/2021			
C	ISSUED FOR DA	22/12/2021			
D	ISSUED FOR DA RFI	25/03/2022			

Consultant		
Structural Engineer / Civil		
Level 6, 73 Miller Street, North Sydney NSW 2060		TTW
Consultant		
Mechanical / Acoustic / Fire Engineer		
Level 6, Building B, 207 Pacific Highway St Leonards NSW 2065		STANTEC
Consultant		
Hydraulics		
Level 23, 101 Miller Street, North Sydney, NSW 2060		JHA

TTW

STANTEC

JHA

Client
Billbergia Group Pty Ltd
Suite 101, 25 Angus St,
Meadowbank, NSW, 2114



Billbergia
creating communities®



Group GSA Pty Ltd ABN 76 002 113 779
Level 7, 60 William St East Sydney NSW
Australia 2011
www.groupgsa.com

T +612 9361 4144 F +612 9332 3458

architecture interior design urban design landscape
nom architect Lisa-Maree Carrigan 7568

Project Title
Eden Street Arncliffe

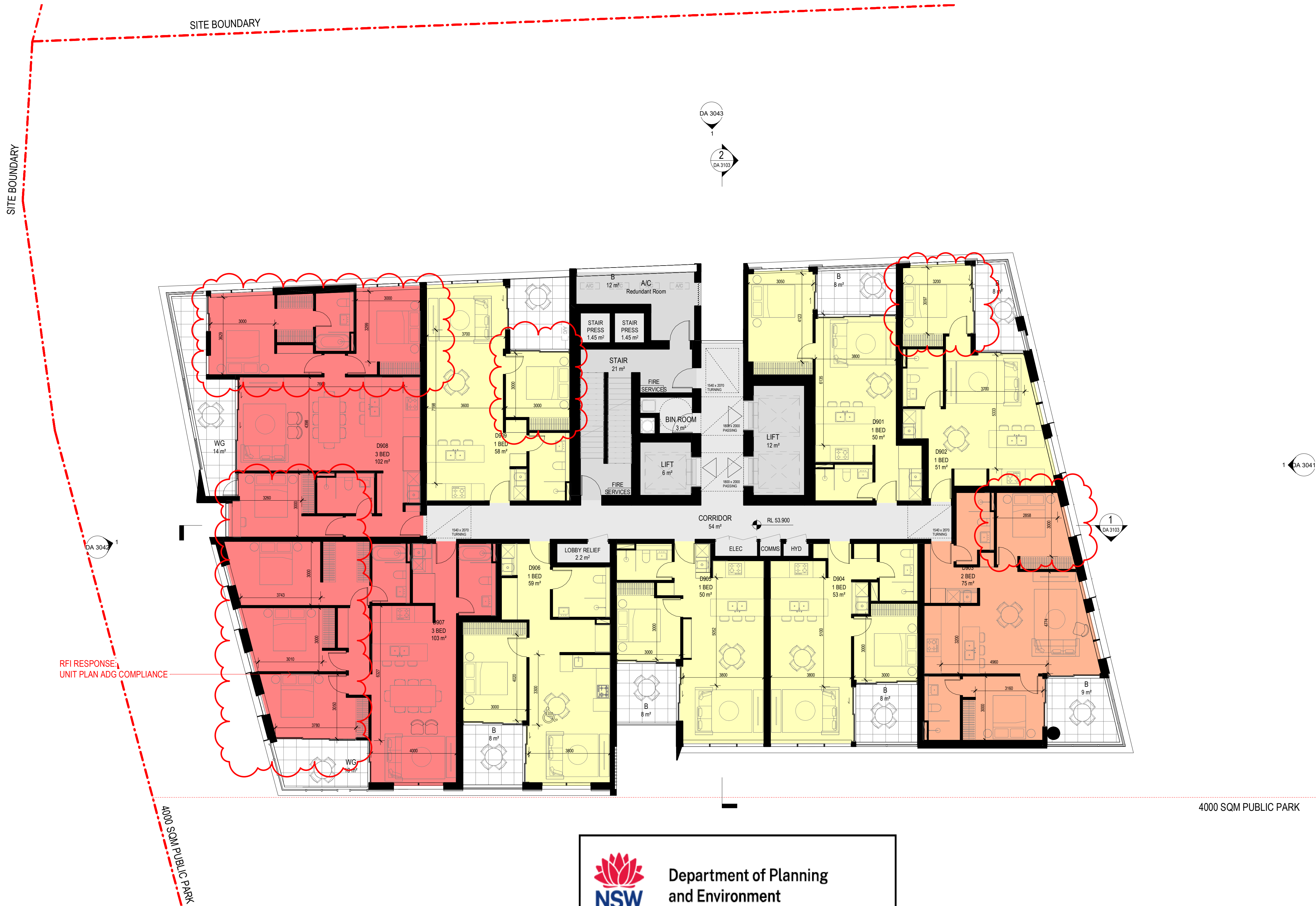
Drawing Title

TOWER D - LEVEL 8

This drawing is the copyright of Group GSA Pty Ltd and may not be altered, reproduced or transmitted in any form or by any means in part or in whole without the written permission of Group GSA Pty Ltd.
All levels and dimensions are to be checked and verified on site prior to the commencement of any work, making of shop drawings or fabrication of components.
Do not scale drawings. Use figured Dimensions.

DA SUBMISSION			
Plotted and checked by	PDS		
Verified	PDS	Approved	LMC
Drawing Created (date)		Drawing Created (by)	JK, SM, AR, EC, AF
			09/02/20
Scale	Project No	Drawing No	Issue
1 : 100	180319	DA 2408	D

4/05/2022 10:29:01 PM



1 TOWER D - LEVEL 9
1 : 100



Department of Planning
and Environment

Issued under the Environmental Planning and Assessment Act 1979

Approved Application No: SSD 11429726

Granted on: 1 August 2022

Signed: AW Sheet No: 102 of 238

KEY:

1 BED / STUDIO
2 BED
3 BED

B: BALCONY
WG: WINTER GARDEN
POS: PRIVATE OPEN SPACE
SL: SKYLIGHT
ADAPTABLE UNIT



DA SUBMISSION

Plotted and checked by		PDS	
Verified	PDS	Approved	LMC
Drawing Created (date)		Drawing Created (by) JK, SM, AR, EC, AF	
		09/02/20	
Scale	Project No	Drawing No	Issue

Amendments			Amendments		
Issue	Description	Date	Issue	Description	Date
1	ISSUED FOR CLIENT'S SIGN OFF	06/04/2021			
2	ISSUED TO BASIX	28/04/2021			
A	ISSUED FOR DA	28/05/2021			
B	ISSUED FOR REVIEW	08/11/2021			
C	ISSUED FOR DA	22/12/2021			
D	ISSUED FOR DA RFI	25/03/2022			

Consultant	Client
Structural Engineer / Civil Level 6, 73 Miller Street, North Sydney NSW 2060 Consultant	Billbergia Group Pty Ltd Suite 101, 25 Angus St, Meadowbank, NSW, 2114
Mechanical / Acoustic / Fire Engineer Level 6, Building B, 207 Pacific Highway St Leonards NSW 2065 Consultant	TTW
Hydraulics Level 23, 101 Miller Street, North Sydney, NSW 2060	STANTEC
	JHA

Client
Billbergia Group Pty Ltd Suite 101, 25 Angus St, Meadowbank, NSW, 2114
Billbergia creating communities®



Group GSA Pty Ltd ABN 76 002 113 779
Level 7, 60 William St East Sydney NSW
Australia 2011
www.groupgsa.com
T +612 9361 4144 F +612 9332 3458
architecture interior design urban design landscape
nom architect Lisa-Maree Carrigan 7568

Project Title	
Eden Street Arncliffe	
Drawing Title	
TOWER D - LEVEL 9	
This drawing is the copyright of Group GSA Pty Ltd and may not be altered, reproduced or transmitted in any form or by any means in part or in whole without the written permission of Group GSA Pty Ltd.	
All levels and dimensions are to be checked and verified on site prior to the commencement of any work, making of shop drawings or fabrication of components. Do not scale drawings. Use figured Dimensions.	



1 TOWER D - LEVEL 10
1:100

 **Department of Planning and Environment**

Issued under the Environmental Planning and Assessment Act 1979
Approved Application No: SSD 11429726

Granted on: 1 August 2022

Signed: AW **Sheet No: 103 of 238**

- KEY:**
- 1 BED / STUDIO
 - 2 BED
 - 3 BED
 - B: BALCONY
 - WG: WINTER GARDEN
 - POS: PRIVATE OPEN SPACE
 - SL: SKYLIGHT
 - ADAPTABLE UNIT

DA SUBMISSION

2022-10-26-4 PM

Plotted and checked by	PDS		
Verified	PDS	Approved	LMC
Drawing Created (date)	Drawing Created (by) JK, SM, AR, EC, AF		
09/02/20			
Scale	Project No	Drawing No	Issue
1 : 100	180319	DA 2410	D

Amendments			Amendments		
Issue	Description	Date	Issue	Description	Date
1	ISSUED FOR CLIENT'S SIGN OFF	06/04/2021			
2	ISSUED TO BASIX	28/04/2021			
A	ISSUED FOR DA	28/05/2021			
B	ISSUED FOR REVIEW	08/11/2021			
C	ISSUED FOR DA	22/12/2021			
D	ISSUED FOR DA RFI	25/03/2022			

Structural Engineer / Civil
Level 6, 73 Miller Street, North Sydney
NSW 2060
Consultant

Mechanical / Acoustic / Fire Engineer
Level 6, Building B, 207 Pacific Highway
St Leonards NSW 2065
Consultant

Hydraulics
Level 23, 101 Miller Street, North Sydney,
NSW 2060

TTW

STANTEC

JHA

Client
Billbergia Group Pty Ltd
Suite 101, 25 Angus St,
Meadowbank, NSW, 2114

Billbergia
creating communities®

GROUP GSA

Group GSA Pty Ltd ABN 76 002 113 779
Level 7, 50 William St East Sydney NSW
Australia 2011
www.groupgsa.com

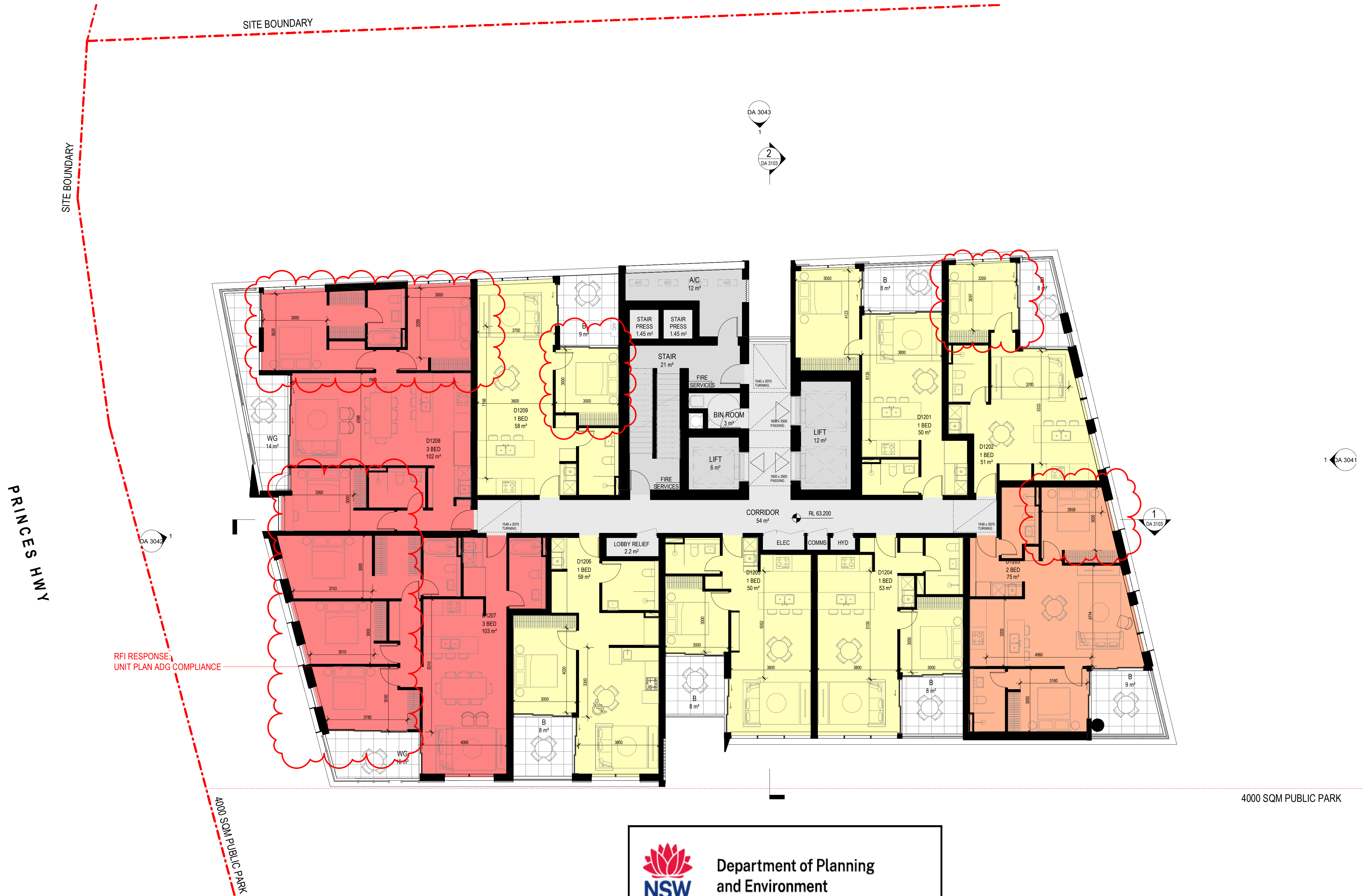
T +612 9361 4144 F +612 9332 3458

architecture interior design urban design landscape
nom architect Lisa-Maree Carrigan 7568

Project Title
Eden Street Arncliffe

Drawing Title
TOWER D - LEVEL 10

This drawing is the copyright of Group GSA Pty Ltd and may not be altered, reproduced or transmitted in any form or by any means in part or in whole without the written permission of Group GSA Pty Ltd.
All levels and dimensions are to be checked and verified on site prior to the commencement of any work, making of shop drawings or fabrication of components.
Do not scale drawings. Use figured Dimensions.



1 TOWER D - LEVEL 12
1:100

 **Department of Planning and Environment**

Issued under the Environmental Planning and Assessment Act 1979

Approved Application No: SSD 11429726

Granted on: 1 August 2022

Signed: AW Sheet No: 105 of 238

- KEY:**
- 1 BED / STUDIO
 - 2 BED
 - 3 BED
 - B: BALCONY
 - WG: WINTER GARDEN
 - POS: PRIVATE OPEN SPACE
 - SL: SKYLIGHT
 - ADAPTABLE UNIT

DA SUBMISSION

Amendments			Amendments		
Issue	Description	Date	Issue	Description	Date
1	ISSUED FOR CLIENT'S SIGN OFF	06/04/2021			
2	ISSUED TO BASIX	28/04/2021			
A	ISSUED FOR DA	28/05/2021			
B	ISSUED FOR REVIEW	08/11/2021			
C	ISSUED FOR DA	22/12/2021			
D	ISSUED FOR DA RFI	25/03/2022			

Consultant		
Structural Engineer / Civil		
Level 6, 73 Miller Street, North Sydney NSW 2060		TTW
Consultant		
Mechanical / Acoustic / Fire Engineer		
Level 6, Building B, 207 Pacific Highway St Leonards NSW 2065		STANTEC
Consultant		
Hydraulics		
Level 23, 101 Miller Street, North Sydney, NSW 2060		JHA

TTW

STANTEC

JHA

GROUP GSA

Group GSA Pty Ltd ABN 76 002 113 779
Level 7, 50 William St East Sydney NSW
Australia 2011
www.groupgsa.com

T +612 9361 4144 F +612 9332 3458

architecture interior design urban design landscape
nom architect Lisa-Maree Carrigan 7568

Project Title
Eden Street Arncliffe

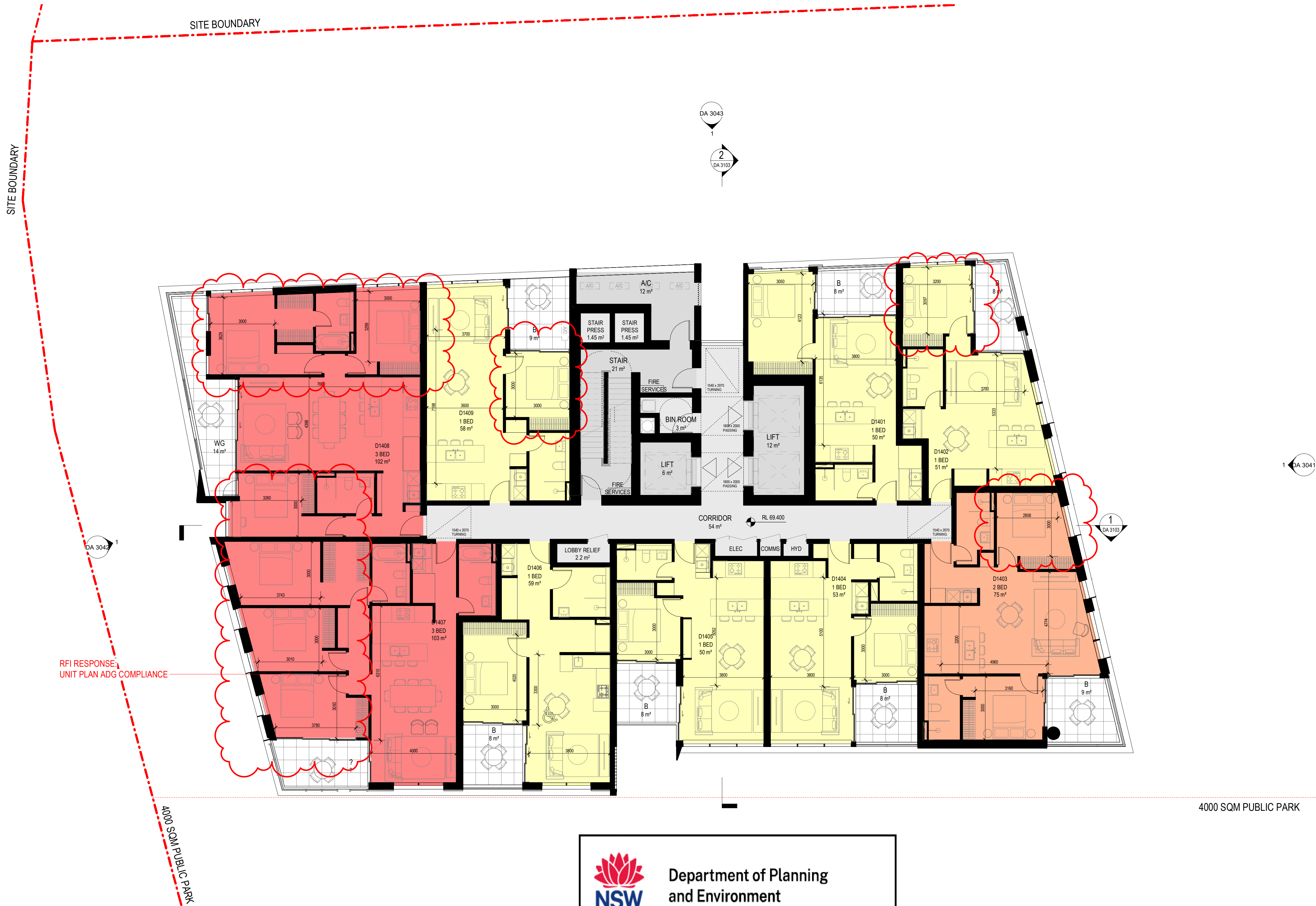
Drawing Title

TOWER D - LEVEL 12

This drawing is the copyright of Group GSA Pty Ltd and may not be altered, reproduced or transmitted in any form or by any means in part or in whole without the written permission of Group GSA Pty Ltd.
All levels and dimensions are to be checked and verified on site prior to the commencement of any work, making of shop drawings or fabrication of components.
Do not scale drawings. Use figured Dimensions.

DA SUBMISSION			
Plotted and checked by	PDS		
Verified	PDS	Approved	LMC
Drawing Created (date)		Drawing Created (by)	JK, SM, AR, EC, AF
			09/02/20
Scale	Project No	Drawing No	Issue
1 : 100	180319	DA 2412	D

4/05/2022 10:30:26 PM



1 TOWER D - LEVEL 14
1 : 100



Department of Planning
and Environment

Issued under the Environmental Planning and Assessment Act 1979

Approved Application No: SSD 11429726

Granted on: 1 August 2022

Signed: AW

Sheet No: 107 of 238

KEY:

1 BED / STUDIO
2 BED
3 BED

B: BALCONY
WG: WINTER GARDEN
POS: PRIVATE OPEN SPACE
SL: SKYLIGHT
ADAPTABLE UNIT



DA SUBMISSION

Plotted and checked by		PDS	
Verified	PDS	Approved	LMC
Drawing Created (date)		Drawing Created (by) JK, SM, AR, EC, AF	
09/02/20			
Scale	Project No	Drawing No	Issue

Amendments			Amendments		
Issue	Description	Date	Issue	Description	Date
1	ISSUED FOR CLIENT'S SIGN OFF	06/04/2021			
2	ISSUED TO BASIX	28/04/2021			
A	ISSUED FOR DA	28/05/2021			
B	ISSUED FOR REVIEW	08/11/2021			
C	ISSUED FOR DA	22/12/2021			
D	ISSUED FOR DA RFI	25/03/2022			

Consultant

Structural Engineer / Civil
Level 6, 73 Miller Street, North Sydney
NSW 2060
Consultant

TTW

Mechanical / Acoustic / Fire Engineer
Level 6, Building B, 207 Pacific Highway
St Leonards NSW 2065
Consultant

STANTEC

Hydraulics
Level 23, 101 Miller Street, North Sydney,
NSW 2060

JHA

Client

Billbergia Group Pty Ltd
Suite 101, 25 Angus St,
Meadowbank, NSW, 2114

Billbergia
creating communities®



Group GSA Pty Ltd ABN 76 002 113 779
Level 7, 60 William St East Sydney NSW
Australia 2011
www.groupgsa.com
T +612 9361 4144 F +612 9332 3458
architecture interior design urban design landscape
nom architect Lisa-Maree Carrigan 7568

Project Title
Eden Street Arncliffe

Drawing Title

TOWER D - LEVEL 14

This drawing is the copyright of Group GSA Pty Ltd and may not be altered, reproduced or transmitted in any form or by any means in part or in whole without the written permission of Group GSA Pty Ltd.
All levels and dimensions are to be checked and verified on site prior to the commencement of any work, making of shop drawings or fabrication of components.
Do not scale drawings. Use figured Dimensions.



1 TOWER D - LEVEL 15
1 : 100

NSW GOVERNMENT Department of Planning and Environment

Issued under the Environmental Planning and Assessment Act 1979
Approved Application No: SSD 11429726

Granted on: 1 August 2022

Signed: AW Sheet No: 108 of 238

- KEY:**
- 1 BED / STUDIO
 - 2 BED
 - 3 BED
 - B: BALCONY
 - WG: WINTER GARDEN
 - POS: PRIVATE OPEN SPACE
 - SL: SKYLIGHT
 - ADAPTABLE UNIT

DA SUBMISSION

Amendments			Amendments		
Issue	Description	Date	Issue	Description	Date
1	ISSUED FOR CLIENT'S SIGN OFF	06/04/2021			
2	ISSUED TO BASIX	28/04/2021			
A	ISSUED FOR DA	28/05/2021			
B	ISSUED FOR REVIEW	08/11/2021			
C	ISSUED FOR DA	22/12/2021			
D	ISSUED FOR DA RFI	25/03/2022			

Consultant
Structural Engineer / Civil
Level 6, 73 Miller Street, North Sydney
NSW 2060
Consultant
TTW

Mechanical / Acoustic / Fire Engineer
Level 6, Building B, 207 Pacific Highway
St Leonards NSW 2065
Consultant
STANTEC

Hydraulics
Level 23, 101 Miller Street, North Sydney,
NSW 2060
JHA

Client
Billbergia Group Pty Ltd
Suite 101, 25 Angus St,
Meadowbank, NSW, 2114

Billbergia
creating communities®

GROUP GSA

Group GSA Pty Ltd ABN 76 002 113 779
Level 7, 50 William St East Sydney NSW
Australia 2011
www.groupgsa.com

T +612 9361 4144 F +612 9332 3458

architecture interior design urban design landscape
nom architect Lisa-Maree Carrigan 7568

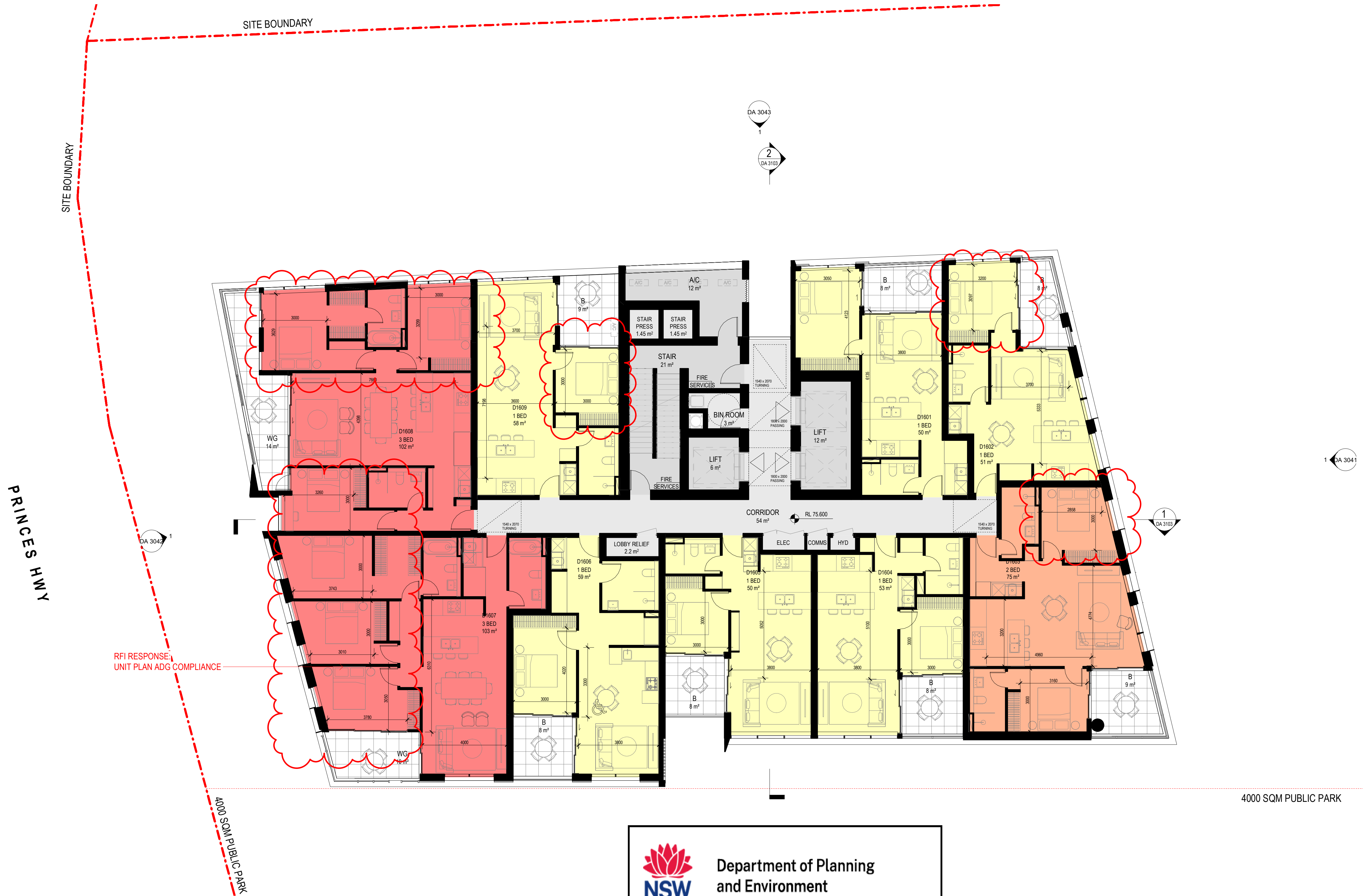
Project Title
Eden Street Arncliffe

Drawing Title
TOWER D - LEVEL 15


This drawing is the copyright of Group GSA Pty Ltd and may not be altered, reproduced or transmitted in any form or by any means in part or in whole without the written permission of Group GSA Pty Ltd.
All levels and dimensions are to be checked and verified on site prior to the commencement of any work, making of shop drawings or fabrication of components.
Do not scale drawings. Use figured Dimensions.

DA SUBMISSION			
Plotted and checked by	PDS		
Verified	PDS	Approved	LMC
Drawing Created (date)	Drawing Created (by) JK, SM, AR, EC, AF		
			09/02/20
Scale	Project No	Drawing No	Issue
1 : 100	180319	DA 2415	D

4/05/2022 10:31:30 PM



1 TOWER D - LEVEL 16
1:100

 **Department of Planning and Environment**

Issued under the Environmental Planning and Assessment Act 1979

Approved Application No: SSD 11429726

Granted on: 1 August 2022

Signed: AW Sheet No: 109 of 238

- KEY:**
- 1 BED / STUDIO
 - 2 BED
 - 3 BED
 - B: BALCONY
 - WG: WINTER GARDEN
 - POS: PRIVATE OPEN SPACE
 - SL: SKYLIGHT
 - ADAPTABLE UNIT

DA SUBMISSION

Plotted and checked by		PDS	
Verified	PDS	Approved	LMC
Drawing Created (date)		Drawing Created (by) JK, SM, AR, EC, AF	
09/02/20			
Scale	Project No	Drawing No	Issue
1 : 100	180319	DA 2416	D

Amendments			Amendments		
Issue	Description	Date	Issue	Description	Date
1	ISSUED FOR CLIENT'S SIGN OFF	06/04/2021			
2	ISSUED TO BASIX	28/04/2021			
A	ISSUED FOR DA	28/05/2021			
B	ISSUED FOR REVIEW	08/11/2021			
C	ISSUED FOR DA	22/12/2021			
D	ISSUED FOR DA RFI	25/03/2022			

Consultant

Structural Engineer / Civil
Level 6, 73 Miller Street, North Sydney
NSW 2060
Consultant

TTW

Mechanical / Acoustic / Fire Engineer
Level 6, Building B, 207 Pacific Highway
St Leonards NSW 2065
Consultant

STANTEC

Hydraulics
Level 23, 101 Miller Street, North Sydney,
NSW 2060

JHA

Client

Billbergia Group Pty Ltd
Suite 101, 25 Angus St,
Meadowbank, NSW, 2114

Billbergia
creating communities®

GROUP GSA

Group GSA Pty Ltd ABN 76 002 113 779
Level 7, 50 William St East Sydney NSW
Australia 2011
www.groupgsa.com

T +612 9361 4144 F +612 9332 3458

architecture interior design urban design landscape
nom architect Lisa-Maree Carrigan 7568

Project Title

Eden Street Arncliffe

Drawing Title

TOWER D - LEVEL 16

This drawing is the copyright of Group GSA Pty Ltd and may not be altered, reproduced or transmitted in any form or by any means in part or in whole without the written permission of Group GSA Pty Ltd.

All levels and dimensions are to be checked and verified on site prior to the commencement of any work, making of shop drawings or fabrication of components. Do not scale drawings. Use figured Dimensions.



1 TOWER D - LEVEL 17
1:100

Department of Planning and Environment

Issued under the Environmental Planning and Assessment Act 1979

Approved Application No: SSD 11429726

Granted on: 1 August 2022

Signed: AW Sheet No: 110 of 238

- KEY:**
- 1 BED / STUDIO
 - 2 BED
 - 3 BED
 - B: BALCONY
 - WG: WINTER GARDEN
 - POS: PRIVATE OPEN SPACE
 - SL: SKYLIGHT
 - ADAPTABLE UNIT

DA SUBMISSION

Amendments			Amendments		
Issue	Description	Date	Issue	Description	Date
1	ISSUED FOR CLIENT'S SIGN OFF	06/04/2021			
2	ISSUED TO BASIX	28/04/2021			
A	ISSUED FOR DA	28/05/2021			
B	ISSUED FOR DA	01/07/2021			
C	ISSUED FOR REVIEW	08/11/2021			
D	ISSUED FOR DA	22/12/2021			
E	ISSUED FOR DA RFI	25/03/2022			

Consultant		
Structural Engineer / Civil		
Level 6, 73 Miller Street, North Sydney		TTW
NSW 2060		
Consultant		
Mechanical / Acoustic / Fire Engineer		
Level 6, Building B, 207 Pacific Highway		STANTEC
St Leonards NSW 2065		
Consultant		
Hydraulics		
Level 23, 101 Miller Street, North Sydney,		JHA
NSW 2060		

Client	
Billbergia Group Pty Ltd	
Suite 101, 25 Angus St,	
Meadowbank, NSW, 2114	
	
Billbergia	
creating communities®	

GROUP GSA

Group GSA Pty Ltd ABN 76 002 113 779
Level 7, 50 William St East Sydney NSW
Australia 2011
www.groupgsa.com

T +612 9361 4144 F +612 9332 3458

architecture interior design urban design landscape
nom architect Lisa-Maree Carrigan 7568

Project Title
Eden Street Arncliffe

Drawing Title
TOWER D - LEVEL 17

This drawing is the copyright of Group GSA Pty Ltd and may not be altered, reproduced or transmitted in any form or by any means in part or in whole without the written permission of Group GSA Pty Ltd.

All levels and dimensions are to be checked and verified on site prior to the commencement of any work, making of shop drawings or fabrication of components. Do not scale drawings. Use figured Dimensions.

DA SUBMISSION			
Plotted and checked by	PDS		
Verified	PDS	Approved	LMC
Drawing Created (date)		Drawing Created (by)	JK, SM, AR, EC, AF
			09/02/20
Scale	Project No	Drawing No	Issue
1 : 100	180319	DA 2417	E

4/05/2022 10:23:11 PM



1 TOWER D - LEVEL 18
1:100



Department of Planning
and Environment

Issued under the Environmental Planning and Assessment Act 1979
Approved Application No: SSD 11429726

Granted on: 1 August 2022

Signed: AW

Sheet No: 111 of 238

KEY:

1 BED / STUDIO
2 BED
3 BED

B: BALCONY
WG: WINTER GARDEN
POS: PRIVATE OPEN SPACE
SL: SKYLIGHT
ADAPTABLE UNIT

DA SUBMISSION

Amendments			Amendments		
Issue	Description	Date	Issue	Description	Date
1	ISSUED FOR CLIENT'S SIGN OFF	06/04/2021			
2	ISSUED TO BASIX	28/04/2021			
A	ISSUED FOR DA	28/05/2021			
B	ISSUED FOR REVIEW	08/11/2021			
C	ISSUED FOR DA	22/12/2021			
D	ISSUED FOR DA RFI	25/03/2022			

Consultant
Structural Engineer / Civil
Level 6, 73 Miller Street, North Sydney
NSW 2060
Consultant
Mechanical / Acoustic / Fire Engineer
Level 6, Building B, 207 Pacific Highway
St Leonards NSW 2065
Consultant
Hydraulics
Level 23, 101 Miller Street, North Sydney,
NSW 2060

TTW
STANTEC
JHA

Client
Billbergia Group Pty Ltd
Suite 101, 25 Angus St,
Meadowbank, NSW, 2114

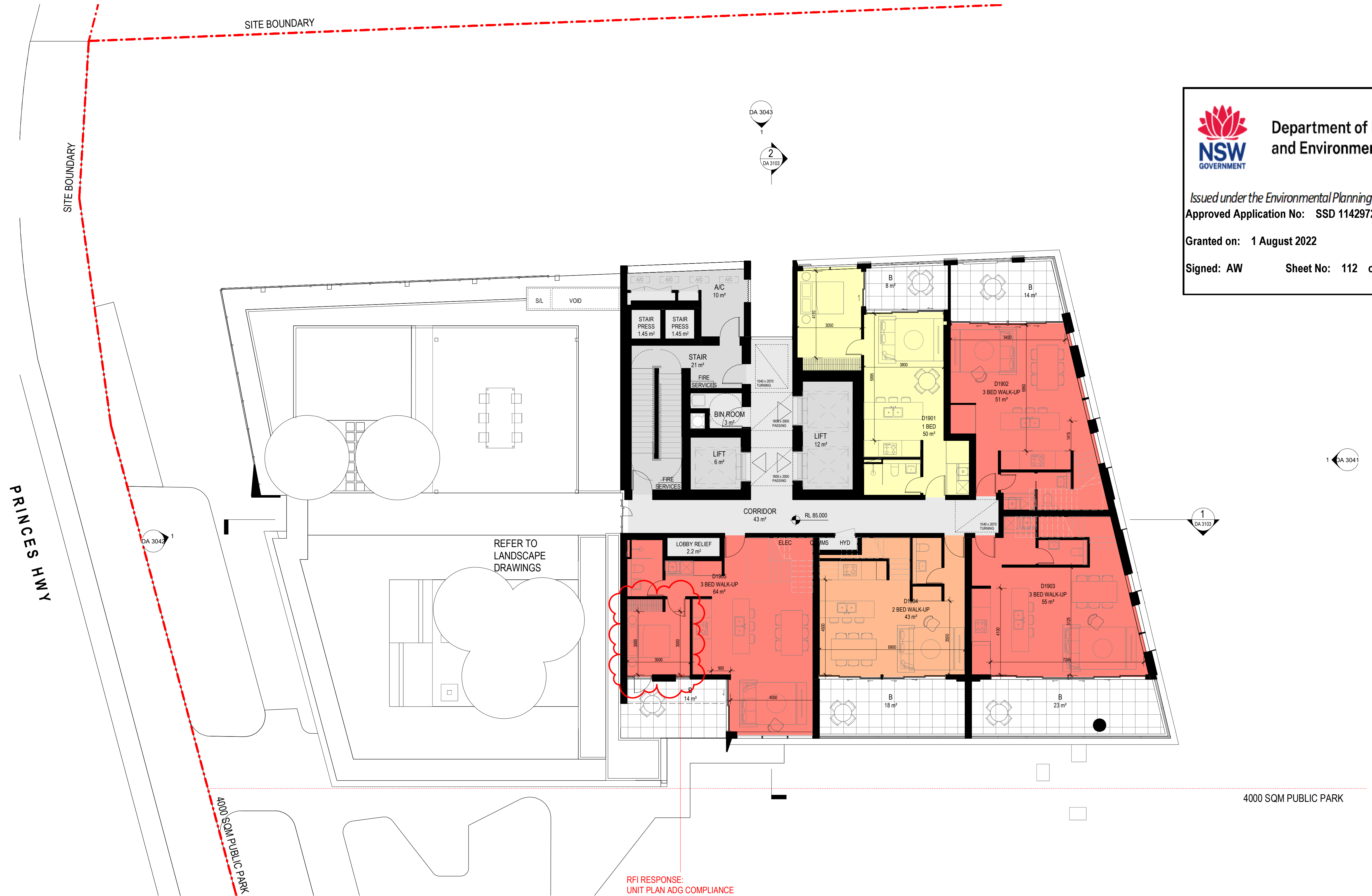
Billbergia
creating communities®

GROUP GSA
Group GSA Pty Ltd ABN 76 002 113 779
Level 7, 60 William St East Sydney NSW
Australia 2011
www.groupgsa.com
T +612 9361 4144 F +612 9332 3458
architecture interior design urban design landscape
nom architect Lisa-Maree Carrigan 7568

Project Title
Eden Street Arncliffe
Drawing Title
TOWER D - LEVEL 18
This drawing is the copyright of Group GSA Pty Ltd and may not be altered, reproduced or transmitted in any form or by any means in part or in whole without the written permission of Group GSA Pty Ltd.
All levels and dimensions are to be checked and verified on site prior to the commencement of any work, making of shop drawings or fabrication of components.
Do not scale drawings. Use figured Dimensions.

DA SUBMISSION			
Plotted and checked by	PDS		
Verified	PDS	Approved	LMC
Drawing Created (date)		Drawing Created (by)	JK, SM, AR, EC, AF
			09/02/20
Scale	Project No	Drawing No	Issue
1:100	180319	DA 2418	D

4/05/2022 10:28:35 PM



Department of Planning
and Environment

Issued under the Environmental Planning and Assessment Act 1979
Approved Application No: SSD 11429726

Granted on: 1 August 2022

Signed: AW Sheet No: 112 of 238

1 LEVEL 19
1:100

- KEY:**
- 1 BED / STUDIO
 - 2 BED
 - 3 BED
 - B: BALCONY
 - WG: WINTER GARDEN
 - POS: PRIVATE OPEN SPACE
 - SL: SKYLIGHT
 - ADAPTABLE UNIT

DA SUBMISSION

Plotted and checked by		PDS	
Verified	PDS	Approved	LMC
Drawing Created (date)		Drawing Created (by) JK, SM, AR, EC, AF	
09/02/20			
Scale	Project No	Drawing No	Issue
1 : 100	180319	DA 2419	D

Amendments			Amendments		
Issue	Description	Date	Issue	Description	Date
1	ISSUED FOR INFORMATION	08/03/2021			
2	ISSUED FOR CLIENT'S SIGN OFF	06/04/2021			
3	ISSUED TO BASIX	28/04/2021			
4	ISSUED FOR INFORMATION	11/05/2021			
A	ISSUED FOR DA	28/05/2021			
B	ISSUED FOR REVIEW	08/11/2021			
C	ISSUED FOR DA	22/12/2021			
D	ISSUED FOR DA RFI	25/03/2022			

Consultant
Structural Engineer / Civil
Level 6, 73 Miller Street, North Sydney
NSW 2060
Consultant
TTW

Consultant
Mechanical / Acoustic / Fire Engineer
Level 6, Building B, 207 Pacific Highway
St Leonards NSW 2065
Consultant
STANTEC

Hydraulics
Level 23, 101 Miller Street, North Sydney,
NSW 2060
JHA

Client
Billbergia Group Pty Ltd
Suite 101, 25 Angus St,
Meadowbank, NSW, 2114

Billbergia
creating communities®

GROUP GSA

Group GSA Pty Ltd ABN 76 002 113 779
Level 7, 50 William St East Sydney NSW
Australia 2011
www.groupgsa.com

T +612 9361 4144 F +612 9332 3458

architecture interior design urban design landscape
nom architect Lisa-Maree Carrigan 7568

Project Title
Eden Street Arncliffe


Drawing Title
TOWER D - LEVEL 19

This drawing is the copyright of Group GSA Pty Ltd and may not be altered, reproduced or transmitted in any form or by any means in part or in whole without the written permission of Group GSA Pty Ltd.
All levels and dimensions are to be checked and verified on site prior to the commencement of any work, making of shop drawings or fabrication of components.
Do not scale drawings. Use figured Dimensions.

4/05/2022 10:32:58 PM



1 TOWER D - LEVEL 20
1 : 100



Department of Planning
and Environment

Issued under the Environmental Planning and Assessment Act 1979

Approved Application No: SSD 11429726

Granted on: 1 August 2022

Signed: AW Sheet No: 113 of 238

- KEY:**
 - 1 BED / STUDIO
 - 2 BED
 - 3 BED
- B: BALCONY
 - WG: WINTER GARDEN
 - POS: PRIVATE OPEN SPACE
 - SL: SKYLIGHT
 - ADAPTABLE UNIT

DA SUBMISSION

Amendments			Amendments		
Issue	Description	Date	Issue	Description	Date
1	ISSUED FOR CLIENT'S SIGN OFF	06/04/2021			
2	ISSUED TO BASIX	28/04/2021			
3	ISSUED FOR INFORMATION	11/05/2021			
A	ISSUED FOR DA	28/05/2021			
B	ISSUED FOR REVIEW	08/11/2021			
C	ISSUED FOR DA	22/12/2021			
D	ISSUED FOR DA RFI	25/03/2022			

Consultant	
Structural Engineer / Civil	
Level 6, 73 Miller Street, North Sydney	
NSW 2060	TTW
Consultant	
Mechanical / Acoustic / Fire Engineer	
Level 6, Building B, 207 Pacific Highway	
St Leonards NSW 2065	STANTEC
Consultant	
Hydraulics	
Level 23, 101 Miller Street, North Sydney,	
NSW 2060	JHA

Client	
Billbergia Group Pty Ltd	
Suite 101, 25 Angus St,	
Meadowbank, NSW, 2114	

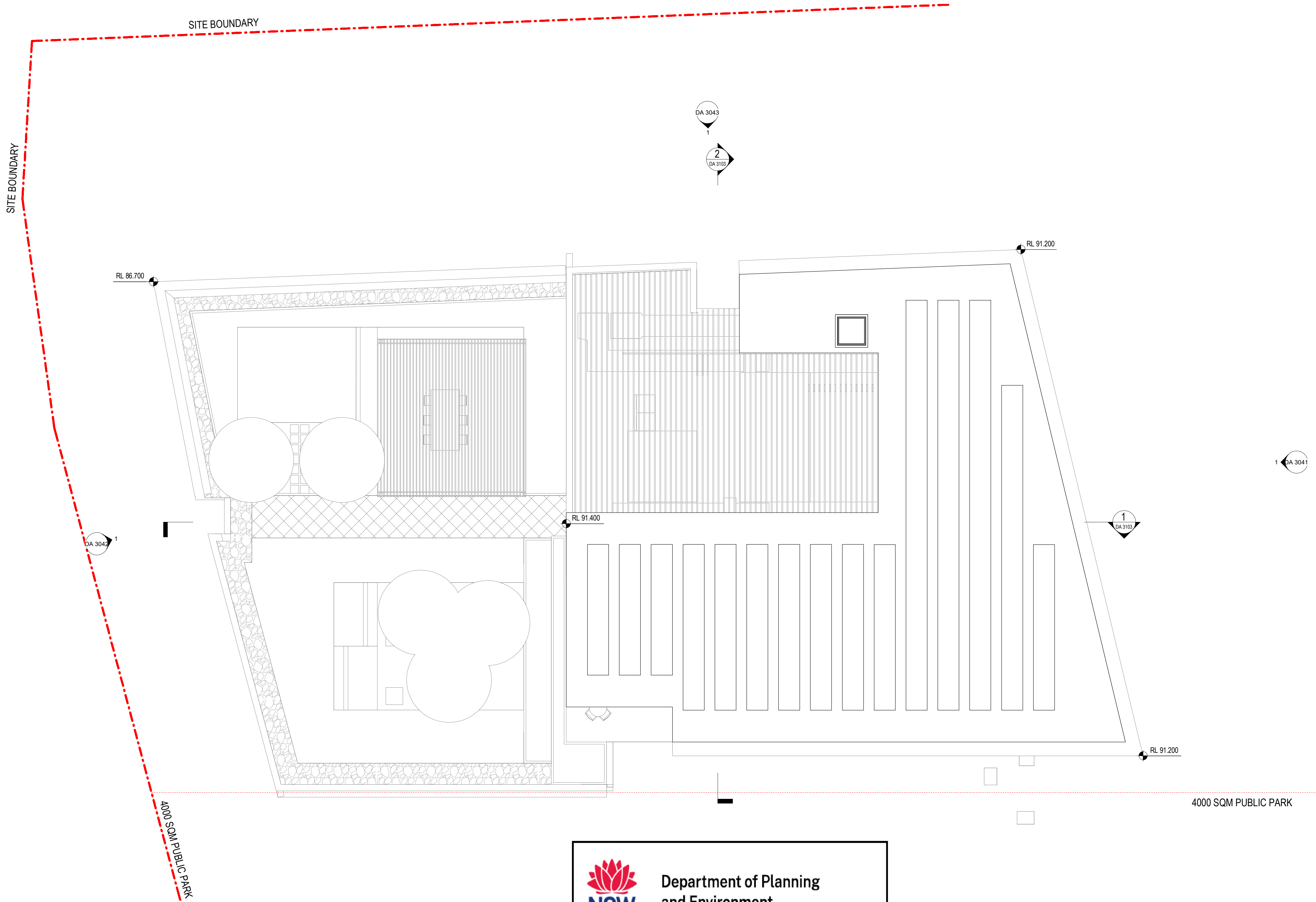


Group GSA Pty Ltd ABN 76 002 113 779
Level 7, 60 William St East Sydney NSW
Australia 2011
www.groupgsa.com
T +612 9361 4144 F +612 9332 3458
architecture interior design urban design landscape
nom architect Lisa-Maree Carrigan 7568


Project Title			
Eden Street Arncliffe			
Drawing Title			
TOWER D - LEVEL 20			
This drawing is the copyright of Group GSA Pty Ltd and may not be altered, reproduced or transmitted in any form or by any means in part or in whole without the written permission of Group GSA Pty Ltd. All levels and dimensions are to be checked and verified on site prior to the commencement of any work, making of shop drawings or fabrication of components. Do not scale drawings. Use figured Dimensions.			

Plotted and checked by		PDS	
Verified	PDS	Approved	LMC
Drawing Created (date)		Drawing Created (by) JK, SM, AR, EC, AF	
09/02/20			
Scale	Project No	Drawing No	Issue
1 : 100	180319	DA 2420	D

4/05/2022 10:33:15 PM



1 TOWER D - ROOF
1 : 100



Department of Planning
and Environment

Issued under the *Environmental Planning and Assessment Act 1979*
Approved Application No: SSD 11429726
Granted on: 1 August 2022
Signed: AW Sheet No: 114 of 238

Amendments		
Issue	Description	Date
1	ISSUED FOR CLIENT'S SIGN OFF	06/04/2021
2	ISSUED TO BASIX	28/04/2021
3	ISSUED FOR INFORMATION	11/05/2021
A	ISSUED FOR DA	28/05/2021
B	ISSUED FOR REVIEW	08/11/2021
C	ISSUED FOR DA	22/12/2021

Amendments		
Issue	Description	Date
1	ISSUED FOR CLIENT'S SIGN OFF	06/04/2021
2	ISSUED TO BASIX	28/04/2021
3	ISSUED FOR INFORMATION	11/05/2021
A	ISSUED FOR DA	28/05/2021
B	ISSUED FOR REVIEW	08/11/2021
C	ISSUED FOR DA	22/12/2021

Consultant	
Structural Engineer / Civil	TTW
Level 6, 73 Miller Street, North Sydney NSW 2060	
Consultant	
Mechanical / Acoustic / Fire Engineer	STANTEC
Level 6, Building B, 207 Pacific Highway St Leonards NSW 2065	
Consultant	
Hydraulics	JHA
Level 23, 101 Miller Street, North Sydney, NSW 2060	

Client	
Billbergia Group Pty Ltd	
Suite 101, 25 Angas St, Meadowbank, NSW, 2114	



Group GSA Pty Ltd ABN 76 002 113 779
Level 7, 60 William St East Sydney NSW
Australia 2011
www.groupgsa.com
T +612 9361 4144 F +612 9332 3458
architecture interior design urban design landscape
nom architect Lisa-Maree Carrigan 7568

Project Title	
Eden Street Arncliffe	

Drawing Title	
TOWER D - ROOF	

This drawing is the copyright of Group GSA Pty Ltd and may not be altered, reproduced or transmitted in any form or by any means in part or in whole without the written permission of Group GSA Pty Ltd.
All levels and dimensions are to be checked and verified on site prior to the commencement of any work, making of shop drawings or fabrication of components.
Do not scale drawings. Use figured Dimensions.

DA SUBMISSION				
Plotted and checked by	PDS			
Verified	PDS	Approved	LMC	
Drawing Created (date)		Drawing Created (by)	JK, SM, AR, EC, AF	
				05/05/21
Scale	Project No	Drawing No	Issue	
1 : 100	180319	DA 2421	C	



3/02/2022 6:37:36 PM