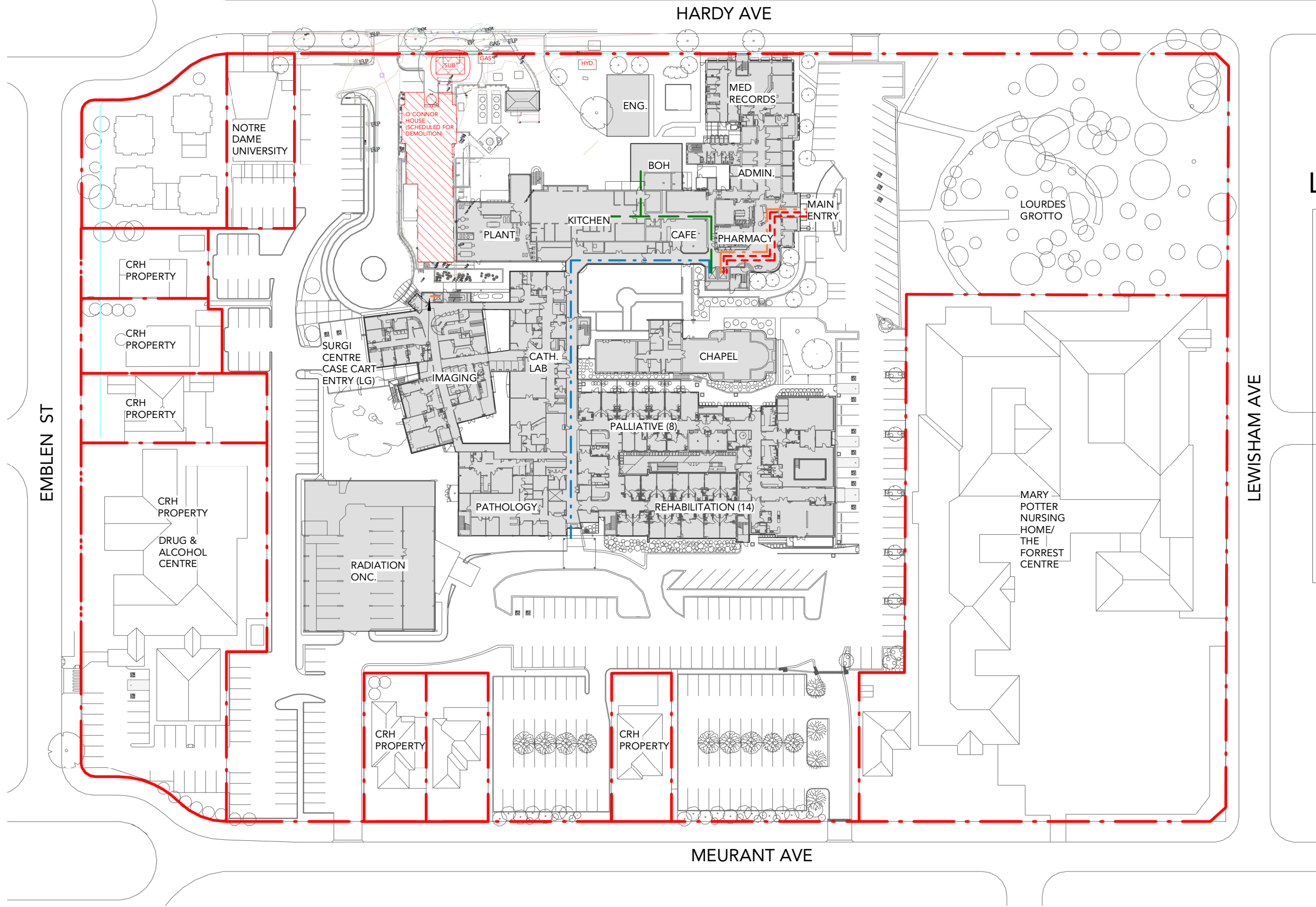


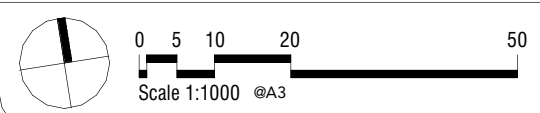
Calvary Riverina Masterplan  
 Existing Site Plan Context  
 1291

Revision: 3 / 11/03/26  
 Drawing No: SK0002



### LEGEND

| Areas                  |  |
|------------------------|--|
| EXISTING TO REMAIN     |  |
| EXISTING TO CHANGE     |  |
| PROPOSED               |  |
| "RED LINE"             |  |
| Primary Flow Paths     |  |
| PATIENT (WALK)         |  |
| PATIENT (BED)          |  |
| STAFF                  |  |
| BOH/ENVIRO             |  |
| EXTERNAL (LOANS/PATH.) |  |

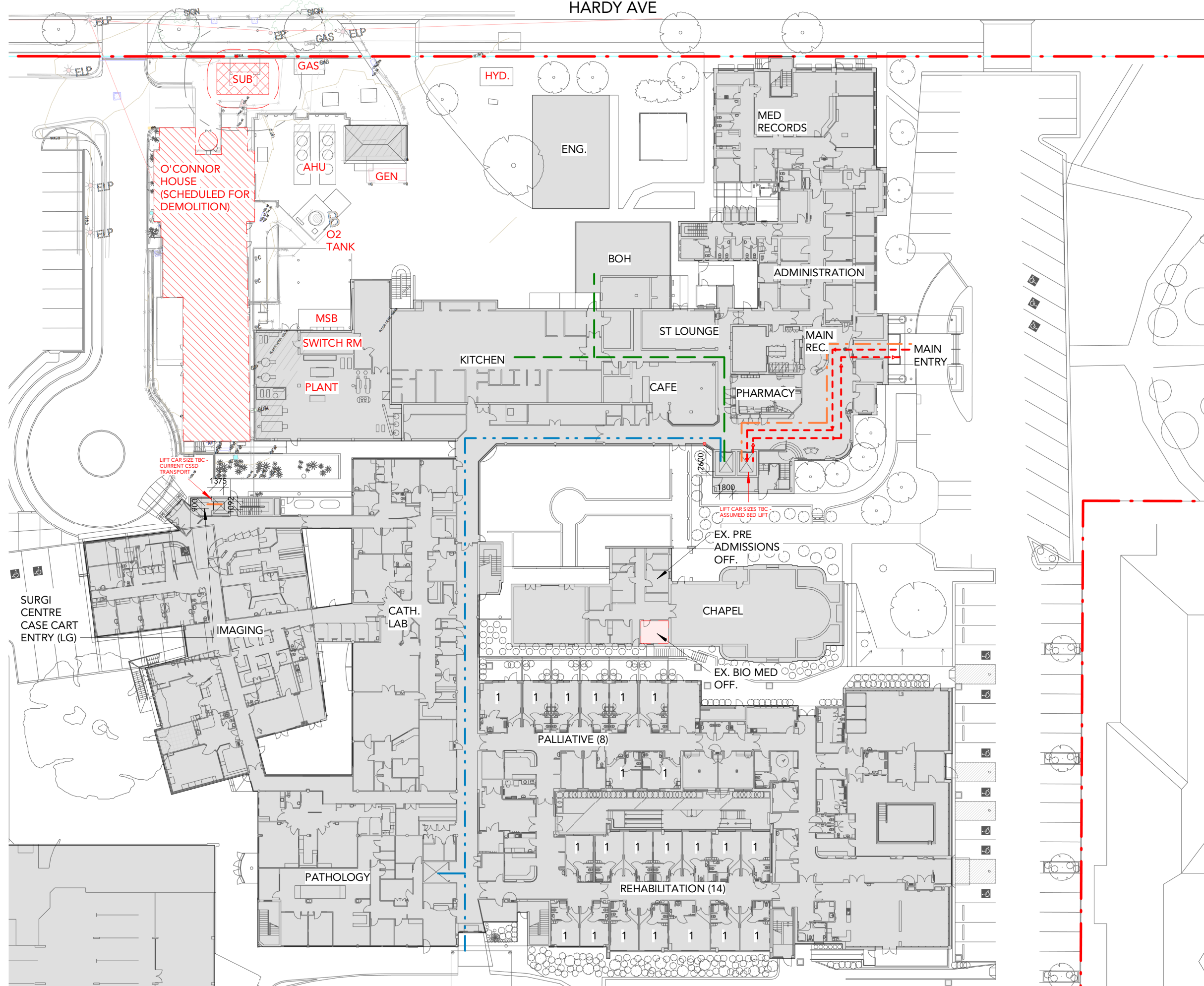


Calvary Riverina Masterplan  
Existing Site Plan (Level 1 - Ground Plane)  
1291

Revision: 3 / 11/03/26  
Drawing No: SK0010

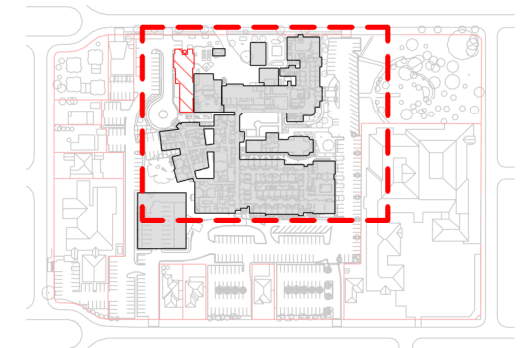


HARDY AVE

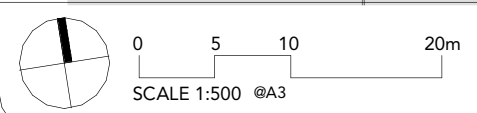


### LEGEND

| Areas                  |  |
|------------------------|--|
| EXISTING TO REMAIN     |  |
| EXISTING TO CHANGE     |  |
| PROPOSED               |  |
| "RED LINE"             |  |
| Primary Flow Paths     |  |
| PATIENT (WALK)         |  |
| PATIENT (BED)          |  |
| STAFF                  |  |
| BOH/ENVIRO             |  |
| EXTERNAL (LOANS/PATH.) |  |



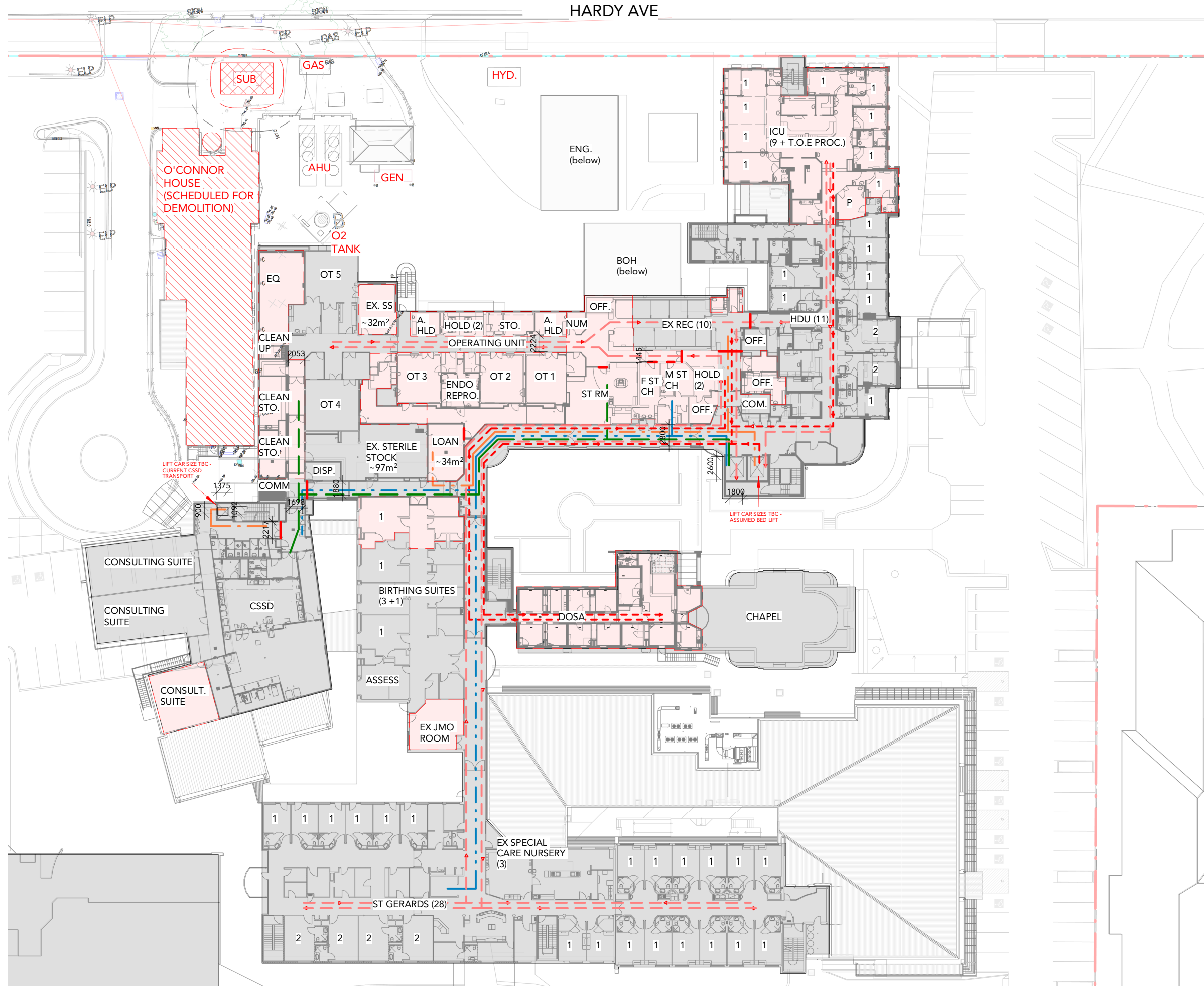
2 Key Plan Level 1 EX  
Scale: 1 : 5000



Calvary Riverina Masterplan  
Existing Plan Level 1  
1291

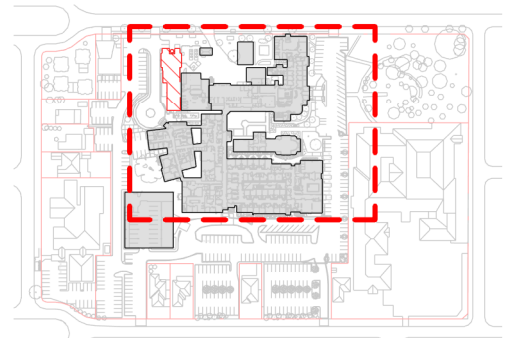
Revision: 3 / 11/03/26  
Drawing No: SK0011



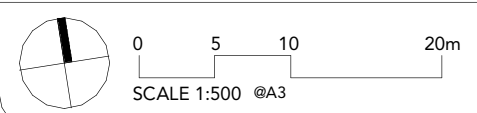


### LEGEND

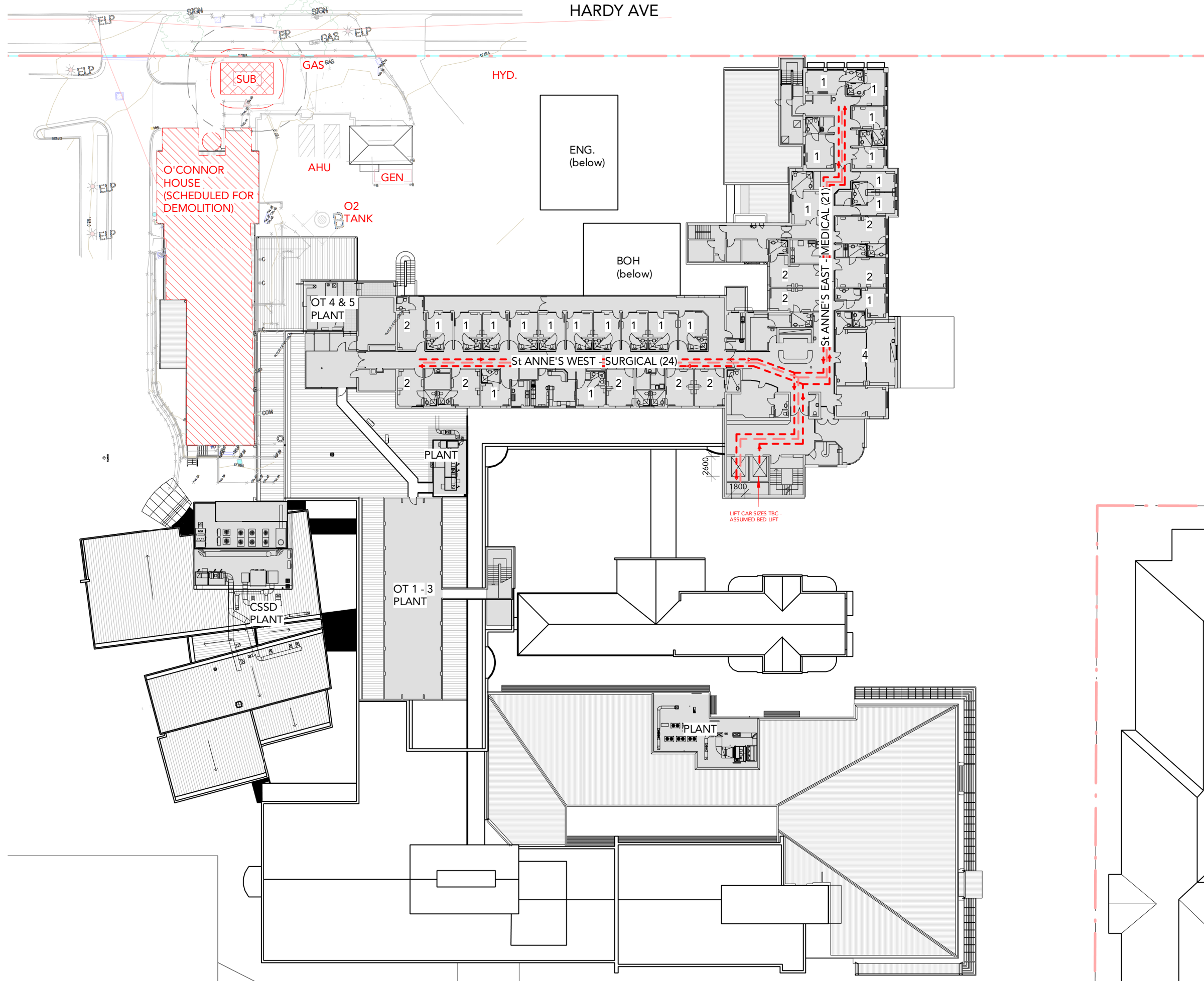
| Areas                  |  |
|------------------------|--|
| EXISTING TO REMAIN     |  |
| EXISTING TO CHANGE     |  |
| PROPOSED               |  |
| "RED LINE"             |  |
| Primary Flow Paths     |  |
| PATIENT (WALK)         |  |
| PATIENT (BED)          |  |
| STAFF                  |  |
| BOH/ENVIRO             |  |
| EXTERNAL (LOANS/PATH.) |  |



2 Key Plan Level 2 EX  
Scale: 1 : 5000

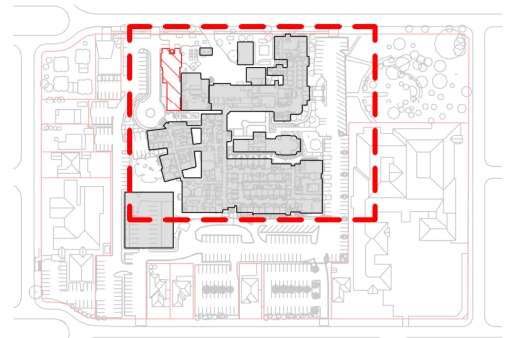
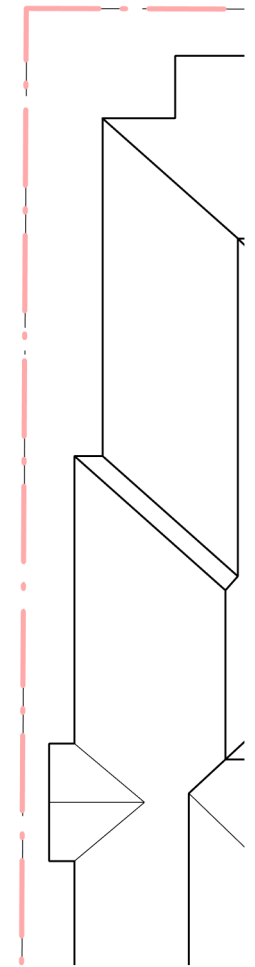


HARDY AVE

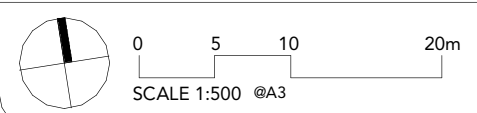


### LEGEND

| Areas                  |  |
|------------------------|--|
| EXISTING TO REMAIN     |  |
| EXISTING TO CHANGE     |  |
| PROPOSED               |  |
| "RED LINE"             |  |
| Primary Flow Paths     |  |
| PATIENT (WALK)         |  |
| PATIENT (BED)          |  |
| STAFF                  |  |
| BOH/ENVIRO             |  |
| EXTERNAL (LOANS/PATH.) |  |



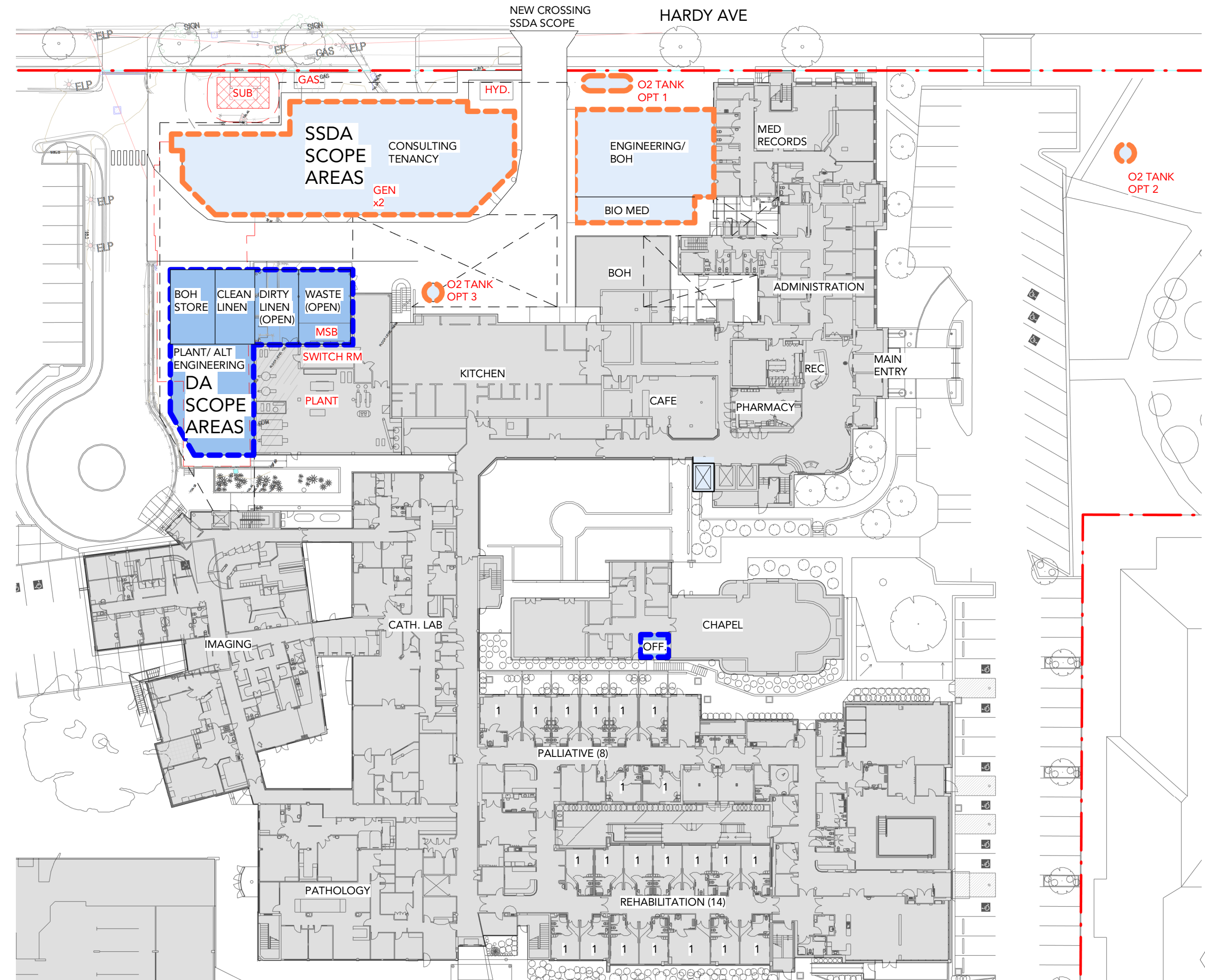
2 Key Plan Level 3 EX  
Scale: 1 : 5000



Calvary Riverina Masterplan  
Existing Plan Level 3  
1291

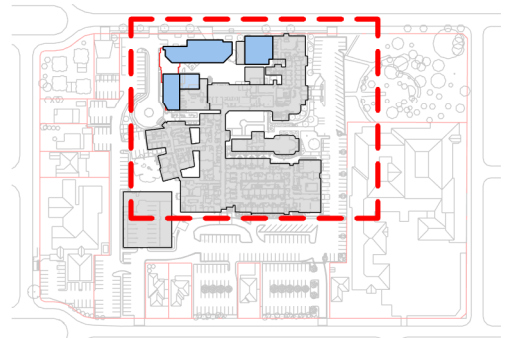
Revision: 2 / 11/03/26  
Drawing No: SK0022



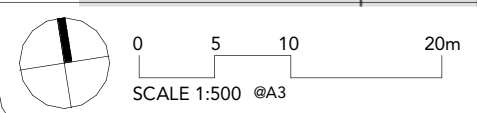


### LEGEND

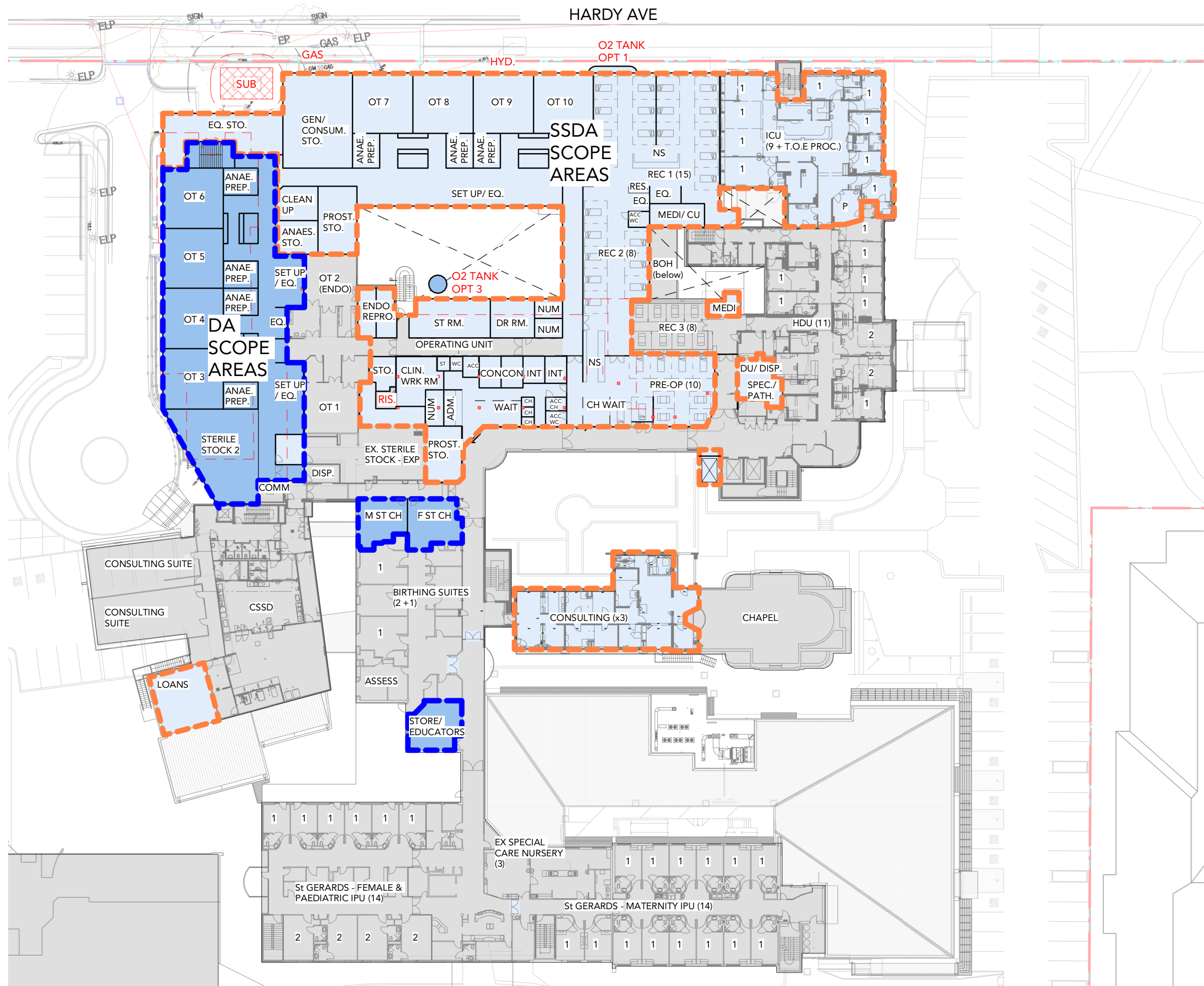
| Areas                    |  |
|--------------------------|--|
| EXISTING TO REMAIN       |  |
| STAGE 1 - DA SCOPE AREAS |  |
| SSDA SCOPE AREAS         |  |



2 Key Plan Level 1 Proposed DA  
Scale: 1 : 5000

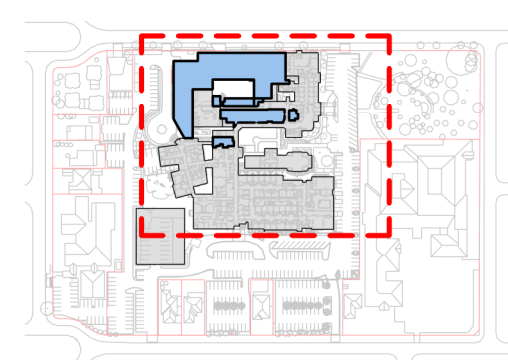


HARDY AVE

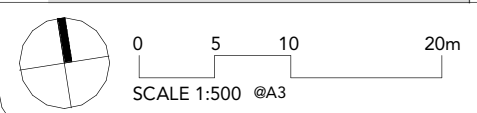


### LEGEND

| Areas                    |  |
|--------------------------|--|
| EXISTING TO REMAIN       |  |
| STAGE 1 - DA SCOPE AREAS |  |
| SSDA SCOPE AREAS         |  |



**2** Key Plan Level 2 Proposed DA  
Scale: 1 : 5000

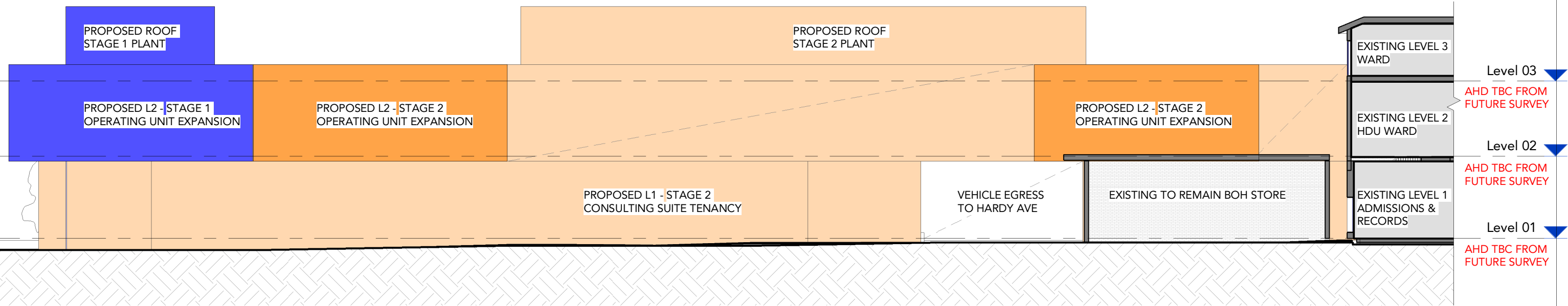


Calvary Riverina Masterplan  
Proposed Plan Level 2 - DA & SSDA Scope  
1291

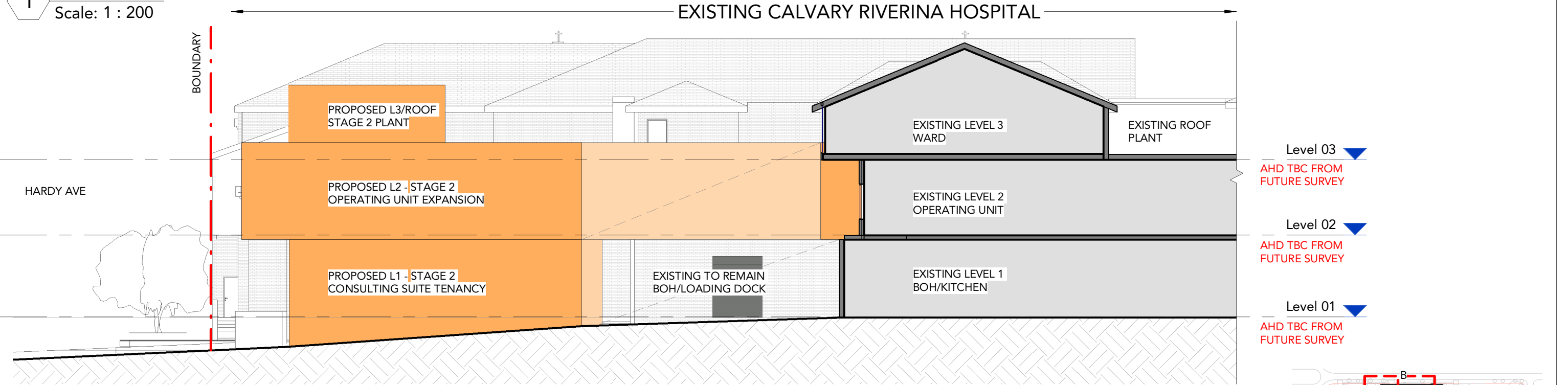
Revision: 2 / 11/03/26  
Drawing No: SK2020



EXISTING CALVARY RIVERINA HOSPITAL



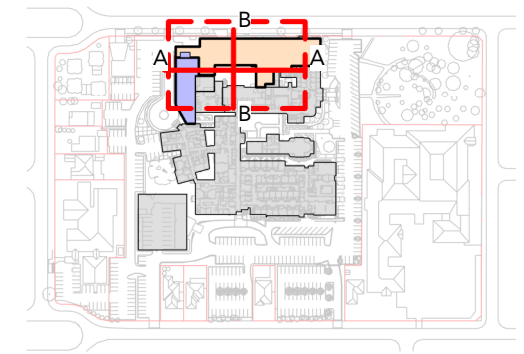
1 Section A-A  
Scale: 1 : 200



2 Section B-B  
Scale: 1 : 200

LEGEND

| Areas                    |  |
|--------------------------|--|
| EXISTING TO REMAIN       |  |
| STAGE 1 DA SCOPE AREAS   |  |
| STAGE 2 SSSA SCOPE AREAS |  |



K Key Plan DA & SSSA Sections  
Scale: 1 : 5000

