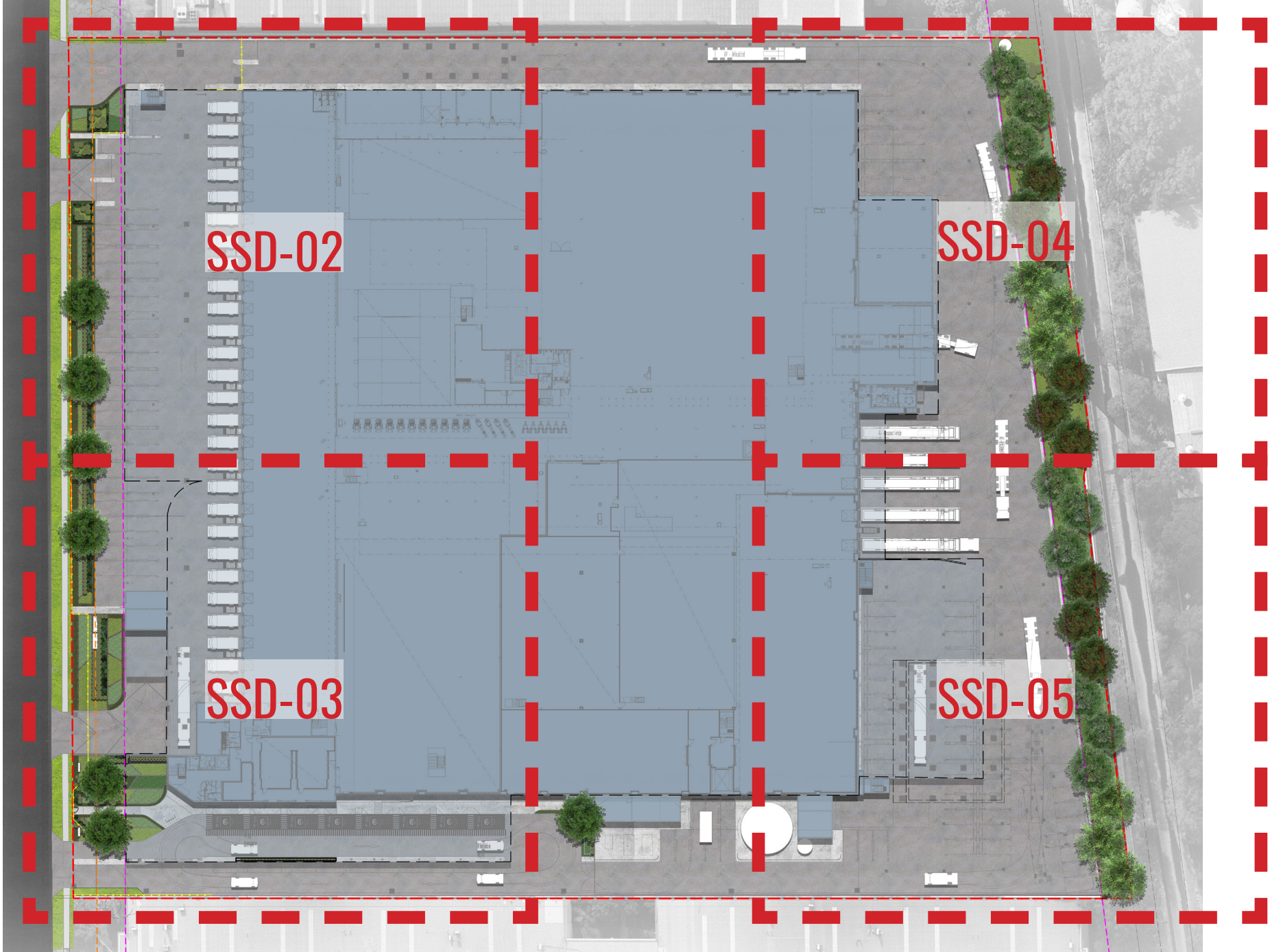


CFC, Percy Street, Auburn, NSW 2144

Landscape Documentation for State Significant Documentation Application



IMAGE TAKEN FROM NEARMAP 2020

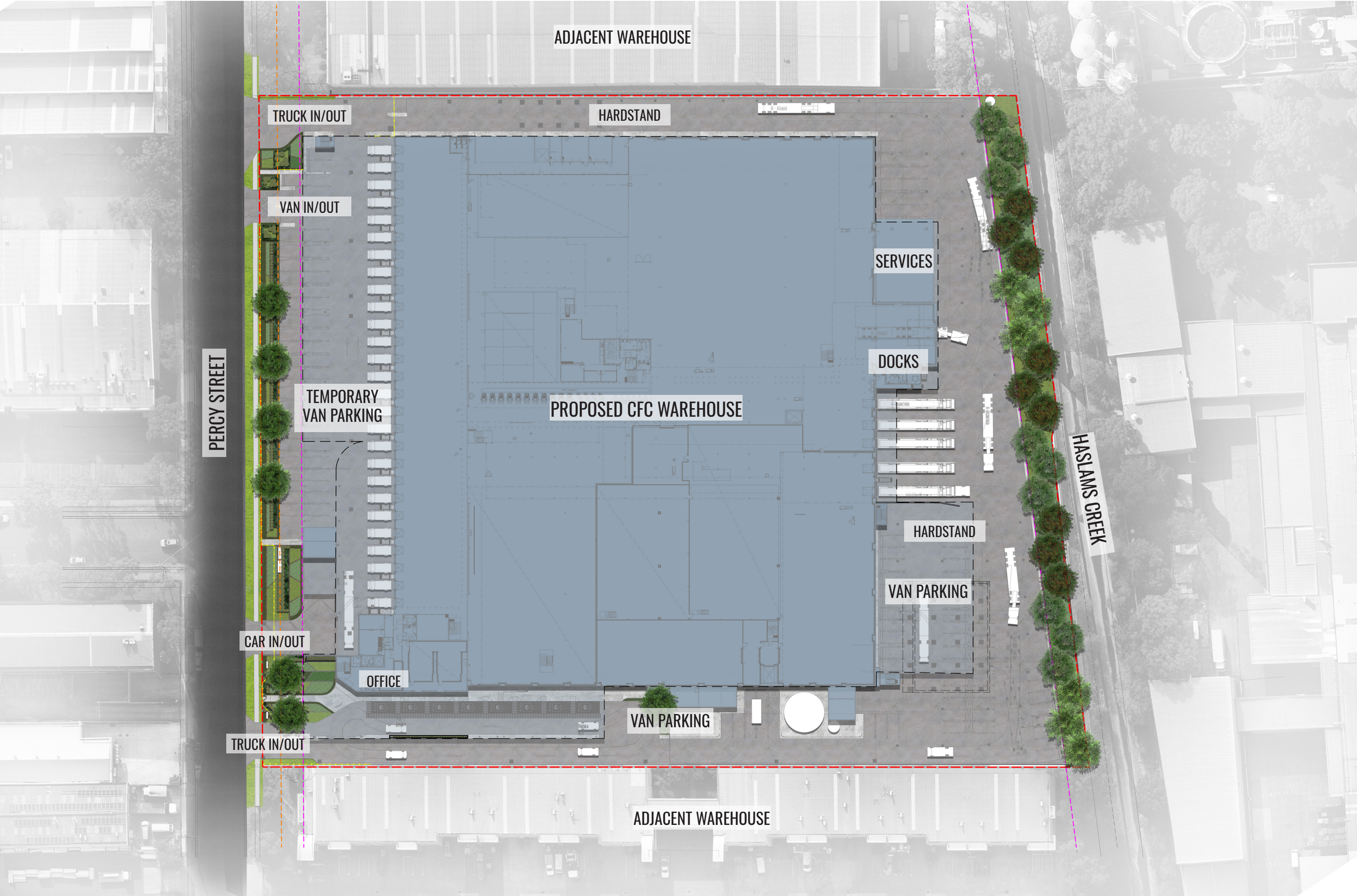


KEY PLAN - SHEET LAYOUTS

NTS

Drawing Register

Dwg No.	Drawing Name
SSD-00	Landscape Cover Sheet
SSD-01	Landscape Master Plan
SSD-02	Landscape Detail Plan - 1
SSD-03	Landscape Detail Plan - 2
SSD-04	Landscape Detail Plan - 3
SSD-05	Landscape Detail Plan - 4
SSD-06	Landscape Detail Plan - First Floor
SSD-07	Tree Retention & Removal Plan
SSD-08	Elevation & Landscape Section AA
SSD-09	Landscape Sections BB & CC
SSD-10	Typical Landscape Details
SSD-11	Typical Specifications
SSD-12	Planting Schedule & Imagery



SITE PLAN

Drawing Title:
Landscape Cover Sheet
DWG No:

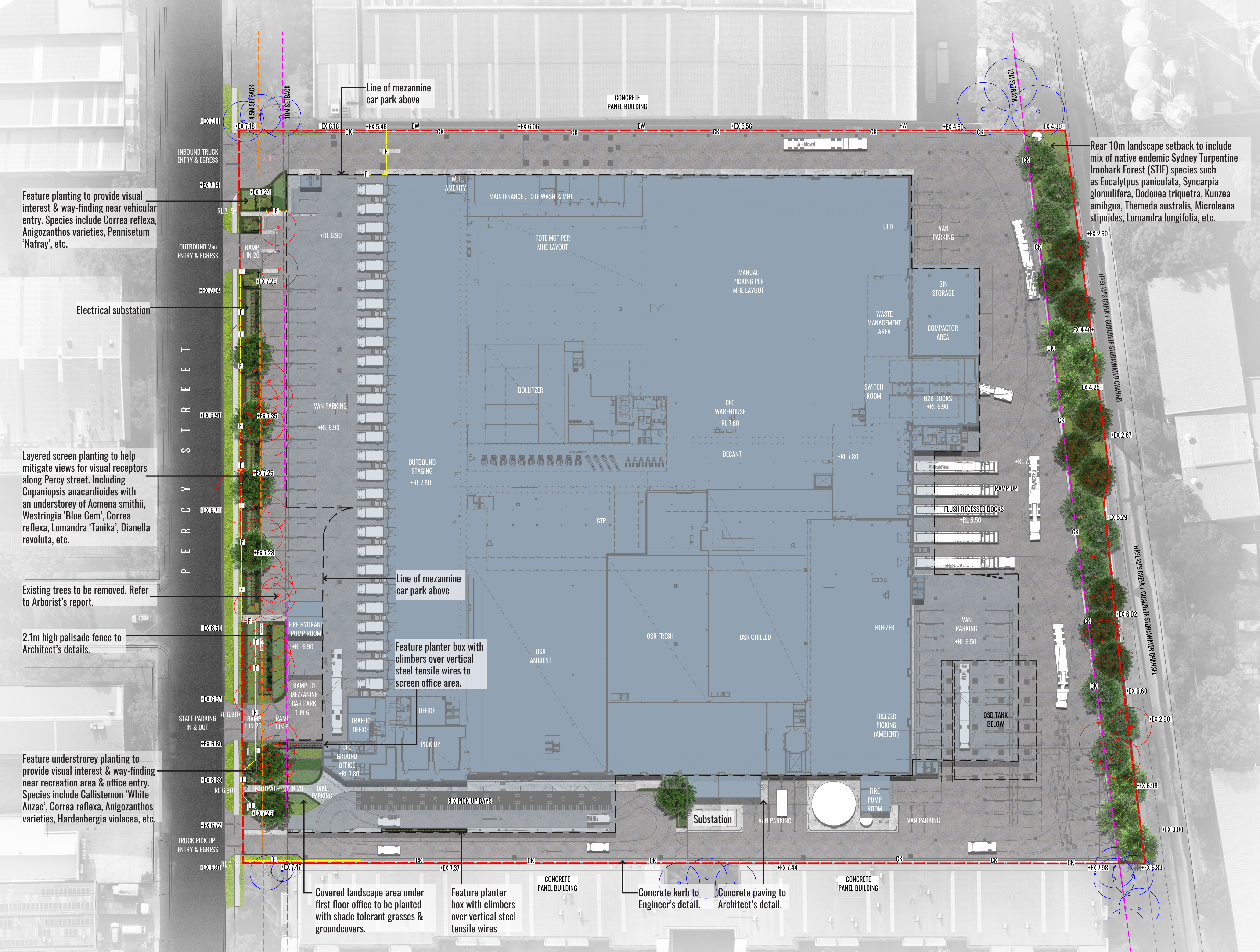
SSD-00

GEOSCAPES
LANDSCAPE ARCHITECTS
Suite 215, 284 Victoria Ave, Chatswood NSW 2067 Ph. (02) 9411 1485
www.geoscapes.com.au
ABN 84 620 205 781 ACN 620 205 781

Architect:
nettleontribe

Client:
Woolworths

Scale:	Date:	Job Number:	North:	Revision				FOR S4.55 APPLICATION	
1:800 @ A1 1:1600 @ A3	12.07.21	200606		Rev	Date	Description	Drawn	Checked	
Project: CFC Percy Street 13 Percy Street, Auburn, NSW 2144				D	28.09.20	UPDATED FOR SSD	SB	BG	
				E	30.09.20	UPDATED FOR SSD	SB	BG	
				F	16.12.20	UPDATED FOR SSD	PT	BG	
				G	12.07.21	UPDATED FOR S4.55	PT	BG	



LEGEND

- SITE BOUNDARY
- - - 4.5M SETBACK LINE
- - - 10M SETBACK LINE
- F 2.1M HIGH PALISADE FENCE TO ARCHITECT'S DETAILS
- EXISTING TREES TO BE RETAINED. REFER TO ARBORIST'S REPORT.
- EXISTING TREES TO BE REMOVED. REFER TO ARBORIST'S REPORT.
- PROPOSED TREES
- PROPOSED HEDGE & SHRUB PLANTING
- PROPOSED GROUNDCOVERS
- PROPOSED CLIMBERS ON VERTICAL STEEL TENSILE WIRES
- HARDSTAND TO ARCHITECT'S DETAIL
- CONCRETE KERB TO ARCHITECT'S DETAIL
- EXISTING CONCRETE RETAINING WALL
- PROPOSED RETAINING WALL TO CIVIL ENGINEER'S DETAIL
- EXISTING FOOTPATH & GRASSED VERGE TO BE RETAINED
- OSD TANK TO ENGINEER'S DETAIL
- BUILDINGS
- TURF
- ELECTRICAL SUBSTATION
- +RL 7.11 PROPOSED LEVELS
- +EX 7.11 EXISTING LEVELS

Drawing Title:
Landscape Master Plan
DWG No:

SSD-01

GEOSCAPES
LANDSCAPE ARCHITECTS
Suite 215, 284 Victoria Ave, Chatswood NSW 2067 Ph. (02) 9411 1485
www.geoscapes.com.au
ABN 84 620 205 781 ACN 620 205 781

Architect:
nettleontribe

Client:
Woolworths

Scale:
1:400 @ A1
1:800 @ A3

Date:
12.07.21

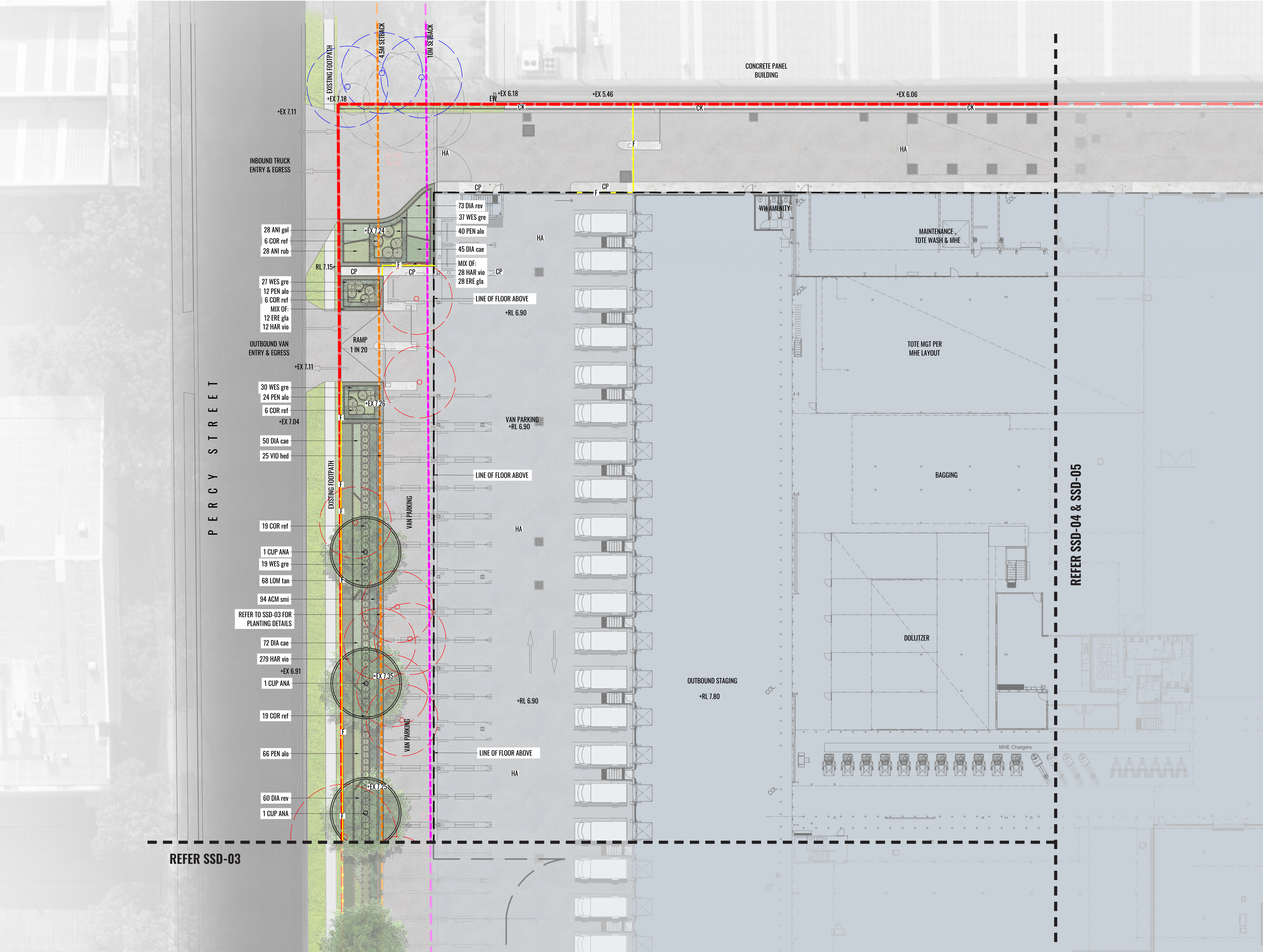
Job Number:
200606

North:
↑

Project:

CFC Percy Street
13 Percy Street, Auburn, NSW 2144

Revision				FOR \$4.55 APPLICATION	
Rev	Date	Description	Drawn	Checked	
D	28.09.20	UPDATED FOR SSD	SB	BG	
E	30.09.20	UPDATED FOR SSD	SB	BG	
F	16.12.20	UPDATED FOR SSD	PT	BG	
G	12.07.21	UPDATED FOR \$4.55	PT	BG	



LEGEND

SITE BOUNDARY

4.5M SETBACK LINE

10M SETBACK LINE

F

2.1M HIGH PALISADE FENCE TO ARCHITECT'S DETAILS

EXISTING TREES TO BE RETAINED. REFER TO ARBORIST'S REPORT.

EXISTING TREES TO BE REMOVED. REFER TO ARBORIST'S REPORT.

PROPOSED TREES

PROPOSED HEDGE & SHRUB PLANTING

PROPOSED CLIMBERS ON VERTICAL STEEL TENSILE WIRES

M1

PROPOSED SHRUB & GROUNDCOVER MATRIX 2. REFER TO TYPICAL DETAILS.

HA

HARDSTAND TO ARCHITECT'S DETAIL

CP

PAVING TO ARCHITECT'S DETAIL

CK

CONCRETE KERB TO ARCHITECT'S DETAIL

EW

EXISTING CONCRETE RETAINING WALL

RW

PROPOSED RETAINING WALL TO CIVIL ENGINEER'S DETAIL

PW

PROPOSED PLANTER WALL TO CIVIL ENGINEER'S DETAIL

EXISTING FOOTPATH & GRASSED VERGE TO BE RETAINED

OSD TANK TO ENGINEER'S DETAIL

BUILDINGS

TURF

+RL 7.11

PROPOSED LEVELS

+EX 7.11

EXISTING LEVELS

SSD-02

KEY PLAN (NTS)

Drawing Title:

Landscape Detail Plan - 1

DWG No:

SSD-02

GEOSCAPES

LANDSCAPE ARCHITECTS

Suite 215, 284 Victoria Ave, Chatswood NSW 2067 Ph. (02) 9411 1485

www.geoscapes.com.au

ABN 84 620 205 781 ACN 620 205 781

Architect:

nettletontribe

Client:

Woolworths

Scale:

1:200 @ A1

1:400 @ A3

Date:

12.07.21

Job Number:

200606

North:

North

Project:

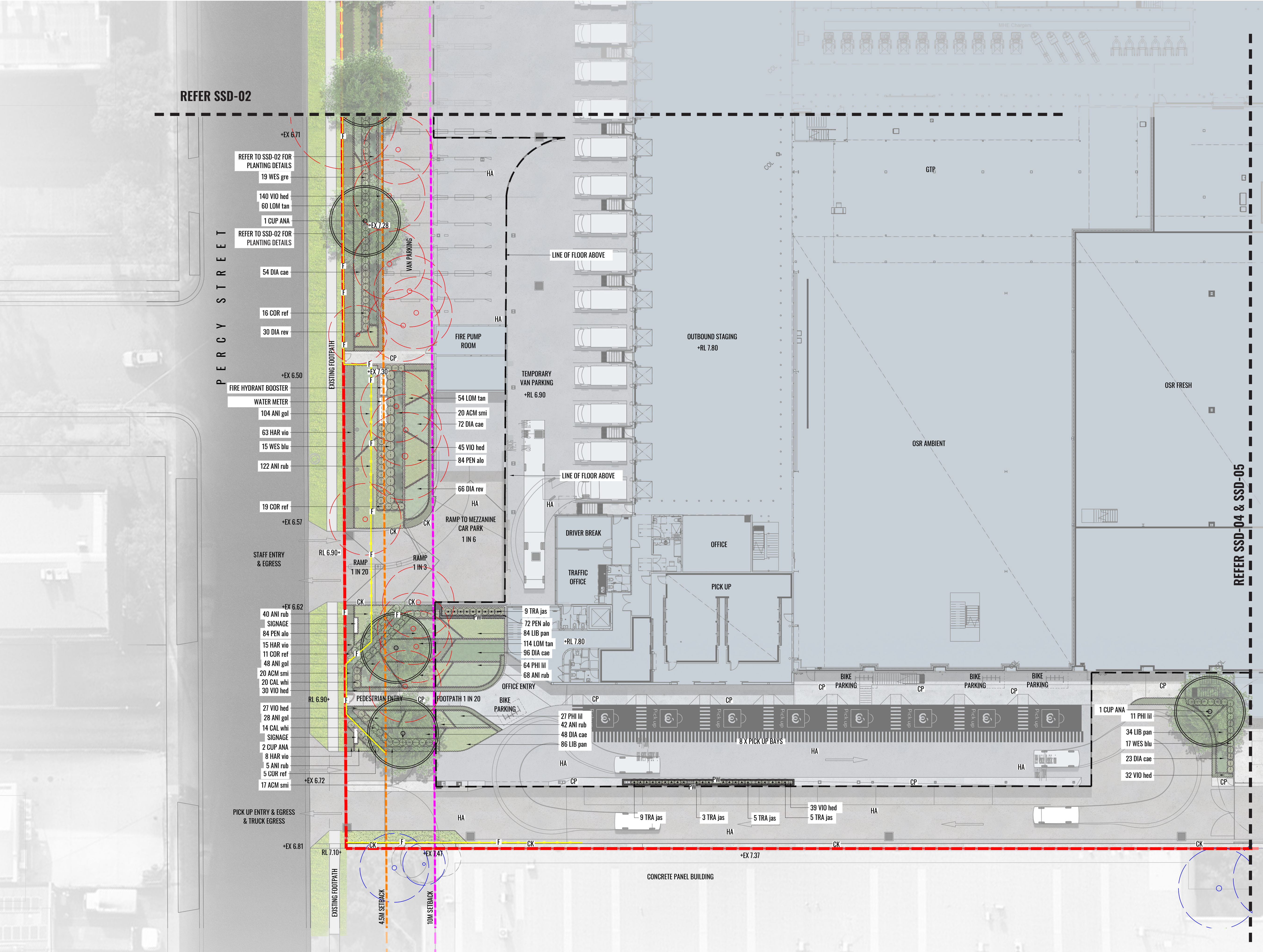
CFC Percy Street

13 Percy Street, Auburn, NSW 2144

Revision

FOR \$4.55 APPLICATION

Rev	Date	Description	Drawn	Checked
D	28.09.20	UPDATED FOR SSD	SB	BG
E	30.09.20	UPDATED FOR SSD	SB	BG
F	16.12.20	UPDATED FOR SSD	PT	BG
G	12.07.21	UPDATED FOR \$4.55	PT	BG



LEGEND

- SITE BOUNDARY
- 4.5M SETBACK LINE
- 10M SETBACK LINE
- 2.1M HIGH PALISADE FENCE TO ARCHITECT'S DETAILS
- EXISTING TREES TO BE RETAINED. REFER TO ARBORIST'S REPORT.
- EXISTING TREES TO BE REMOVED. REFER TO ARBORIST'S REPORT.
- PROPOSED TREES
- PROPOSED HEDGE & SHRUB PLANTING
- PROPOSED CLIMBERS ON VERTICAL STEEL TENSILE WIRES
- PROPOSED SHRUB & GROUNDCOVER MATRIX 2. REFER TO TYPICAL DETAILS.
- HARDSTAND TO ARCHITECT'S DETAIL
- PAVING TO ARCHITECT'S DETAIL
- CONCRETE KERB TO ARCHITECT'S DETAIL
- EXISTING CONCRETE RETAINING WALL
- PROPOSED RETAINING WALL TO CIVIL ENGINEER'S DETAIL
- PROPOSED PLANTER WALL TO CIVIL ENGINEER'S DETAIL
- EXISTING FOOTPATH & GRASSED VERGE TO BE RETAINED
- OSD TANK TO ENGINEER'S DETAIL
- BUILDINGS
- TURF
- PROPOSED LEVELS
- EXISTING LEVELS

KEY PLAN (NTS)

Drawing Title:
Landscape Detail Plan - 2
DWG No:

SSD-03

GEOSCAPES

LANDSCAPE ARCHITECTS

Suite 215, 284 Victoria Ave, Chatswood NSW 2067 Ph. (02) 9411 1485
www.geoscapes.com.au
ABN 84 620 205 781 ACN 620 205 781

Architect:

Client:

Scale:
1:200 @ A1
1:400 @ A3

Date:
12.07.21

Job Number:
200606

North:

Project:
CFC Percy Street
13 Percy Street, Auburn, NSW 2144

Revision			FOR \$4.55 APPLICATION	
Rev	Date	Description	Drawn	Checked
D	28.09.20	UPDATED FOR SSD	SB	BG
E	30.09.20	UPDATED FOR SSD	SB	BG
F	16.12.20	UPDATED FOR SSD	PT	BG
G	12.07.21	UPDATED FOR \$4.55	PT	BG



LEGEND

SITE BOUNDARY

4.5M SETBACK LINE

10M SETBACK LINE

F

2.1M HIGH PALISADE FENCE TO ARCHITECT'S DETAILS

EXISTING TREES TO BE RETAINED. REFER TO ARBORIST'S REPORT.

EXISTING TREES TO BE REMOVED. REFER TO ARBORIST'S REPORT.

PROPOSED TREES

PROPOSED HEDGE & SHRUB PLANTING

PROPOSED CLIMBERS ON VERTICAL STEEL TENSILE WIRES

M1

PROPOSED SHRUB & GROUNDCOVER MATRIX 2. REFER TO TYPICAL DETAILS.

HA

HARDSTAND TO ARCHITECT'S DETAIL

CP

PAVING TO ARCHITECT'S DETAIL

CK

CONCRETE KERB TO ARCHITECT'S DETAIL

EW

EXISTING CONCRETE RETAINING WALL

RW

PROPOSED RETAINING WALL TO CIVIL ENGINEER'S DETAIL

PW

PROPOSED PLANTER WALL TO CIVIL ENGINEER'S DETAIL

EXISTING FOOTPATH & GRASSED VERGE TO BE RETAINED

OSD TANK TO ENGINEER'S DETAIL

BUILDINGS

TURF

+RL 7.11

PROPOSED LEVELS

+EX 7.11

EXISTING LEVELS

SSD-04

KEY PLAN (NTS)

Drawing Title:
Landscape Detail Plan - 3
DWG No:

GEOSCAPES

LANDSCAPE ARCHITECTS

Suite 215, 284 Victoria Ave, Chatswood NSW 2067 Ph. (02) 9411 1485
www.geoscapes.com.au
ABN 84 620 205 781 ACN 620 205 781

Architect:

nettleontribe

Client:

Woolworths

Scale:
1:200 @ A1
1:400 @ A3

Date:
12.07.21

Job Number:
200606

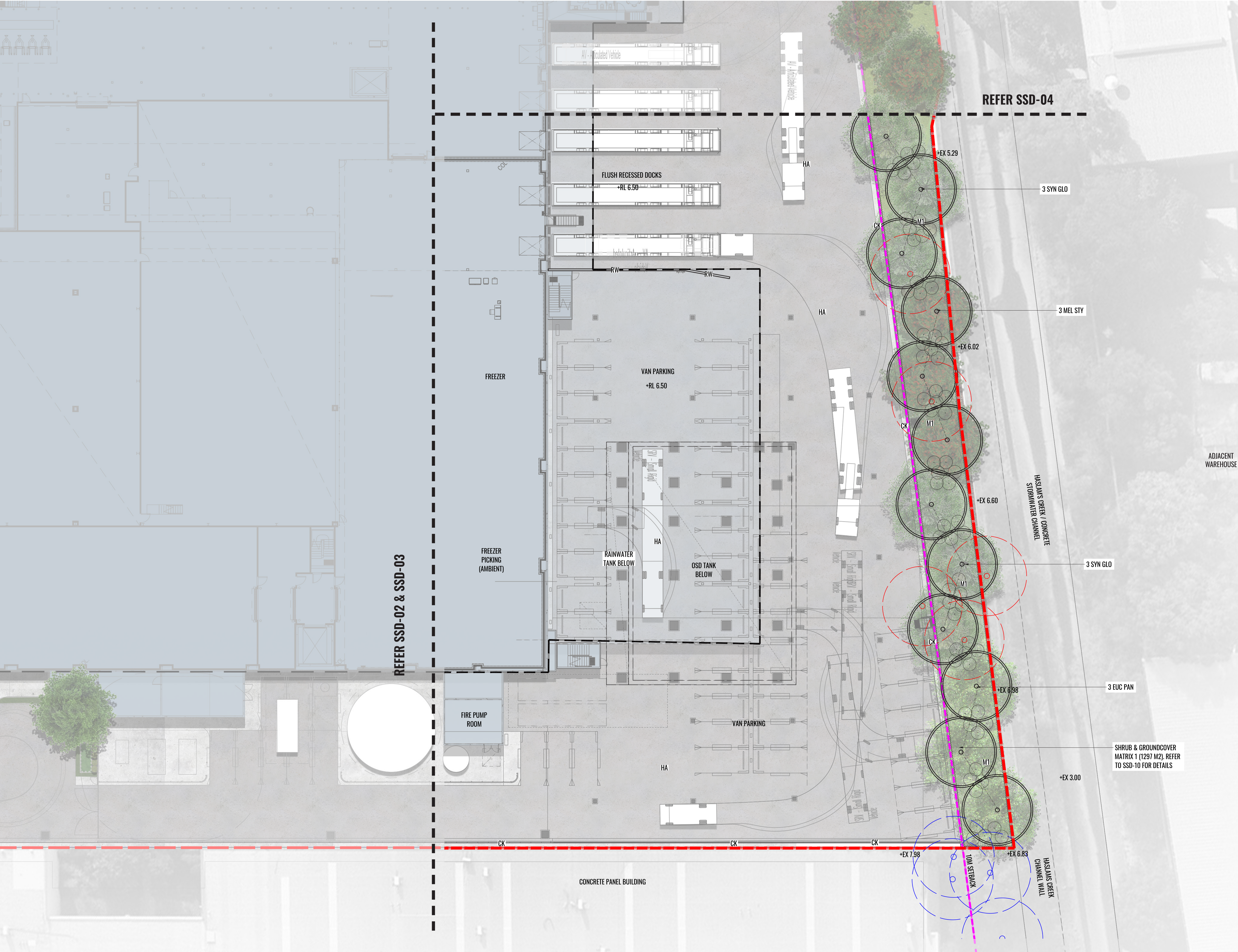
North:

Project:
CFC Percy Street
13 Percy Street, Auburn, NSW 2144

Revision

FOR \$4.55 APPLICATION

Rev	Date	Description	Drawn	Checked
D	28.09.20	UPDATED FOR SSD	SB	BG
E	30.09.20	UPDATED FOR SSD	SB	BG
F	16.12.20	UPDATED FOR SSD	PT	BG
G	12.07.21	UPDATED FOR \$4.55	PT	BG



LEGEND

SITE BOUNDARY

4.5M SETBACK LINE

10M SETBACK LINE

F

2.1M HIGH PALISADE FENCE TO ARCHITECT'S DETAILS

EXISTING TREES TO BE RETAINED. REFER TO ARBORIST'S REPORT.

EXISTING TREES TO BE REMOVED. REFER TO ARBORIST'S REPORT.

PROPOSED TREES

PROPOSED HEDGE & SHRUB PLANTING

PROPOSED CLIMBERS ON VERTICAL STEEL TENSILE WIRES

M1

PROPOSED SHRUB & GROUNDCOVER MATRIX 2. REFER TO TYPICAL DETAILS.

HA

HARDSTAND TO ARCHITECT'S DETAIL

CP

PAVING TO ARCHITECT'S DETAIL

CK

CONCRETE KERB TO ARCHITECT'S DETAIL

EW

EXISTING CONCRETE RETAINING WALL

RW

PROPOSED RETAINING WALL TO CIVIL ENGINEER'S DETAIL

PW

PROPOSED PLANTER WALL TO CIVIL ENGINEER'S DETAIL

EXISTING FOOTPATH & GRASSED VERGE TO BE RETAINED

OSD TANK TO ENGINEER'S DETAIL

BUILDINGS

TURF

+RL 7.11

PROPOSED LEVELS

+EX 7.11

EXISTING LEVELS

SSD-05

KEY PLAN (NTS)

Revision			FOR \$4.55 APPLICATION		
Rev	Date	Description	Drawn	Checked	
D	28.09.20	UPDATED FOR SSD	SB	BG	
E	30.09.20	UPDATED FOR SSD	SB	BG	
F	16.12.20	UPDATED FOR SSD	PT	BG	
G	12.07.21	UPDATED FOR \$4.55	PT	BG	

Drawing Title:
Landscape Detail Plan - 4
DWG No:

SSD-05

GEOSCAPHES

LANDSCAPE ARCHITECTS

Suite 215, 284 Victoria Ave, Chatswood NSW 2067 Ph. (02) 9411 1485

www.geoscapes.com.au

ABN 84 620 205 781 ACN 620 205 781

Architect:

nettleontribe

Client:

Woolworths

Scale:
1:200 @ A1
1:400 @ A3

Date:
12.07.21

Job Number:
200606

North:

Project:

CFC Percy Street
13 Percy Street, Auburn, NSW 2144



EXISTING TREES SCHEDULE					
TREE CODE	BOTANICAL NAME	COMMON NAME	TPZ (RADIUS)	SRZ (RADIUS)	TREATMENT
T1	<i>Melaleuca quinquenervia</i>	Paperbark Tree	6m	2.6m	Remove
T2	<i>Eucalyptus nicholii</i>	Willow Peppermint	6.2m	2.7m	Remove
T3	<i>Melaleuca citrina</i>	Bottlebrush	1.5m	1.6m	Remove
T4	<i>Melaleuca citrina</i>	Bottlebrush	2.2m	1.9m	Remove
T5	<i>Melaleuca quinquenervia</i>	Paperbark Tree	6.3m	2.8m	Remove
T6	<i>Melaleuca quinquenervia</i>	Paperbark Tree	10.8m	3.4m	Remove
T7	<i>Melaleuca citrina</i>	Bottlebrush	2.8m	2m	Remove
T8	<i>Melaleuca citrina</i>	Bottlebrush	1.8m	1.7m	Remove
T9	<i>Allocasuarina littoralis</i>	River She-ok	5.2m	2.5m	Remove
T10	<i>Allocasuarina spp.</i>	River She-ok	5.1m	2.6m	Remove
T11	<i>Allocasuarina spp.</i>	River She-ok	4.3m	2.3m	Remove
T12	<i>Allocasuarina spp.</i>	River She-ok	5m	2.5m	Remove
T13	<i>Allocasuarina spp.</i>	River She-ok	4.6m	2.3m	Remove
T14	<i>Casuarina cunninghamiana</i>	River Oak	4.8m	2.4m	Remove
T15	<i>Casuarina cunninghamiana</i>	River Oak	5m	2.4m	Remove
T16	<i>Angophora costata</i>	Sydney Red Gum	12.2m	3.4m	Remove
T17	<i>Casuarina cunninghamiana</i>	River Oak	4.4m	2.3m	Remove
T18	<i>Casuarina cunninghamiana</i>	River Oak	2.7m	2m	Remove
T19	<i>Allocasuarina spp.</i>	River She-ok	5m	2.6m	Remove
T20	<i>Allocasuarina spp.</i>	River She-ok	2.7m	2m	Remove
T21	<i>Allocasuarina spp.</i>	River She-ok	5m	2.6m	Remove
T22	<i>Allocasuarina spp.</i>	River She-ok	5.7m	2.6m	Remove
T23	<i>Allocasuarina spp.</i>	River She-ok	4.8m	2.4m	Remove
T24	<i>Corymbia citridora</i>	Lemon Scented Gum	7.6m	2.9m	Remove
NS25	<i>Melaleuca quinquenervia (TBC)</i>	Paperbark Tree	5.6m	2.5m	Retain
NS26	<i>Allocasuarina Spp. (TBC)</i>	River She-ok	4.6m	2.3m	Retain
NS27	<i>Allocasuarina Spp. (TBC)</i>	River She-ok	5.2m	2.5m	Retain
NS28	<i>Allocasuarina Spp. (TBC)</i>	River She-ok	2.6m	5.6m	Retain
NS29	<i>Allocasuarina Spp. (TBC)</i>	River She-ok	6.7m	2.8m	Retain
NS30	<i>Robinia pseudoacacia</i>	Robinia	2.7m	2.1m	Retain
NS31	<i>Washingtonia robusta</i>	Fan Palm	2m	1m	Retain
NS32	<i>Robinia pseudoacacia</i>	Peppercorn	-	-	Retain
NS33	<i>Melaleuca citrina</i>	Bottlebrush	-	-	Retain
NS34	<i>Melaleuca citrina</i>	Bottlebrush	-	-	Retain
NS35	<i>Ligustrum lucidum</i>	Large Leaf Privet	-	-	Remove
NS36	<i>Ligustrum lucidum</i>	Large Leaf Privet	-	-	Remove
NS36A	<i>Casuarina cunninghamiana (TBC)</i>	River Oak	3m	2.1m	Remove
NS37	<i>Casuarina cunninghamiana</i>	River Oak	2.5m	1.8m	Remove
NS38	<i>Cinnamomum camphora</i>	Camphor Laurel	-	-	Remove
NS39	Stand of 5 <i>Eucalyptus molucana</i>	Grey Box	-	-	Retain
NS40	Stand of <i>Casuarina cunninghamiana</i>	River Oak	-	-	Retain
NS1A	<i>Casuarina cunninghamiana</i>	River Oak	1.8m	1.7m	Retain
NS2A	<i>Casuarina cunninghamiana</i>	River Oak	5.4m	2.6m	Retain
NS3A	<i>Casuarina cunninghamiana</i>	River Oak	5.7m	2.6m	Retain

LEGEND

- SITE BOUNDARY
- EXISTING UNSURVEYED TREES TO BE RETAINED OR REMOVED. REFER TO ARBORIST'S REPORT.
- EXISTING TREES TO BE RETAINED. REFER TO ARBORIST'S REPORT.
- EXISTING TREES TO BE REMOVED. REFER TO ARBORIST'S REPORT.
- TREE PROTECTION ZONE. REFER TO ARBORIST'S REPORT & EXISTING TREES SCHEDULE.
- STRUCTURAL ROOT ZONE. REFER TO ARBORIST'S REPORT & EXISTING TREES SCHEDULE.

TREE 25, 26, 27, 28, 29 [POSSIBLE COUNCIL ASSETS] NOT LOCATED IN THE SURVEY PLAN. POSSIBLE REMOVAL IN THE FUTURE AS DETERMINED BY THE COUNCIL.

Drawing Title:
Tree Retention & Removal Plan
DWG No:

SSD-07

GEOSCAPES
LANDSCAPE ARCHITECTS
Suite 215, 284 Victoria Ave, Chatswood NSW 2067 Ph. (02) 9411 1485
www.geoscapes.com.au
ABN 84 620 205 781 ACN 620 205 781

Architect:
nettleontribe

Client:
Woolworths

Scale:
1:400 @ A1
1:800 @ A3

Date:
12.07.21

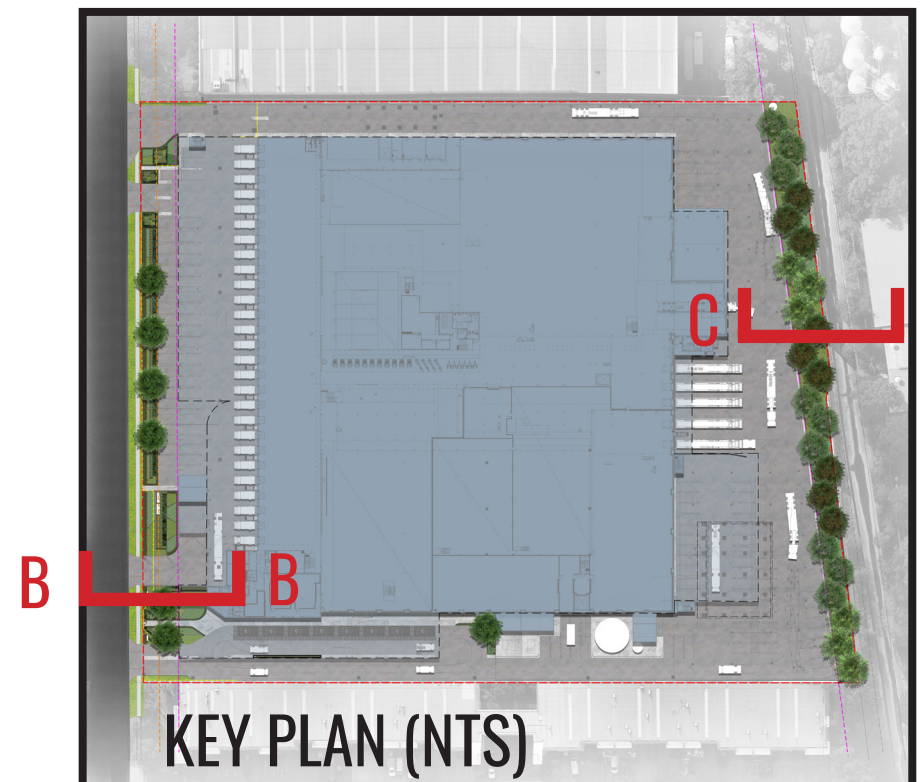
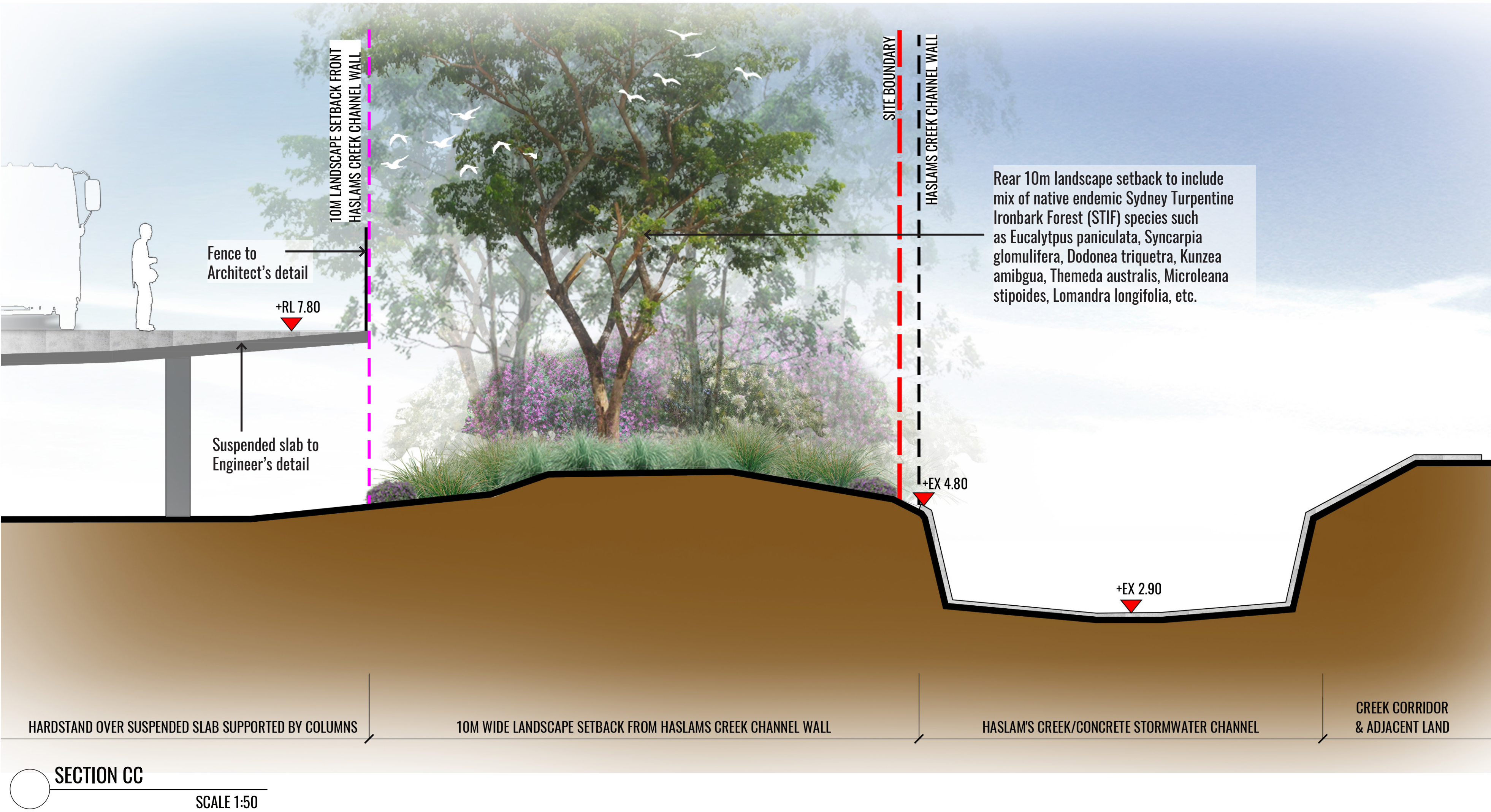
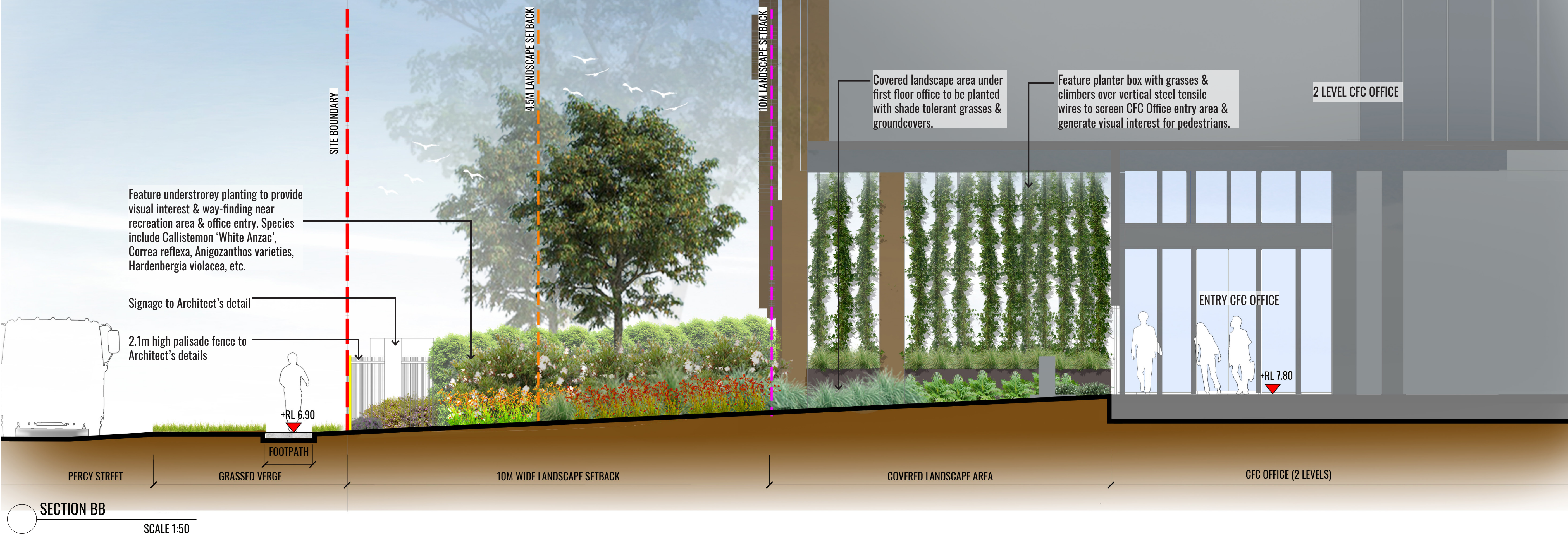
Job Number:
200606

North:

Project:

CFC Percy Street
13 Percy Street, Auburn, NSW 2144

Revision			FOR \$4.55 APPLICATION	
Rev	Date	Description	Drawn	Checked
D	28.09.20	UPDATED FOR SSD	SB	BG
E	30.09.20	UPDATED FOR SSD	SB	BG
F	16.12.20	UPDATED FOR SSD	PT	BG
G	12.07.21	UPDATED FOR \$4.55	PT	BG



Drawing Title:
Landscape Sections CC & DD
DWG No:

SSD-09

GEOSCAPES
LANDSCAPE ARCHITECTS

Suite 215, 284 Victoria Ave, Chatswood NSW 2067 Ph. (02) 9411 1485
www.geoscapes.com.au
ABN 84 620 205 781 ACN 620 205 781

Architect:

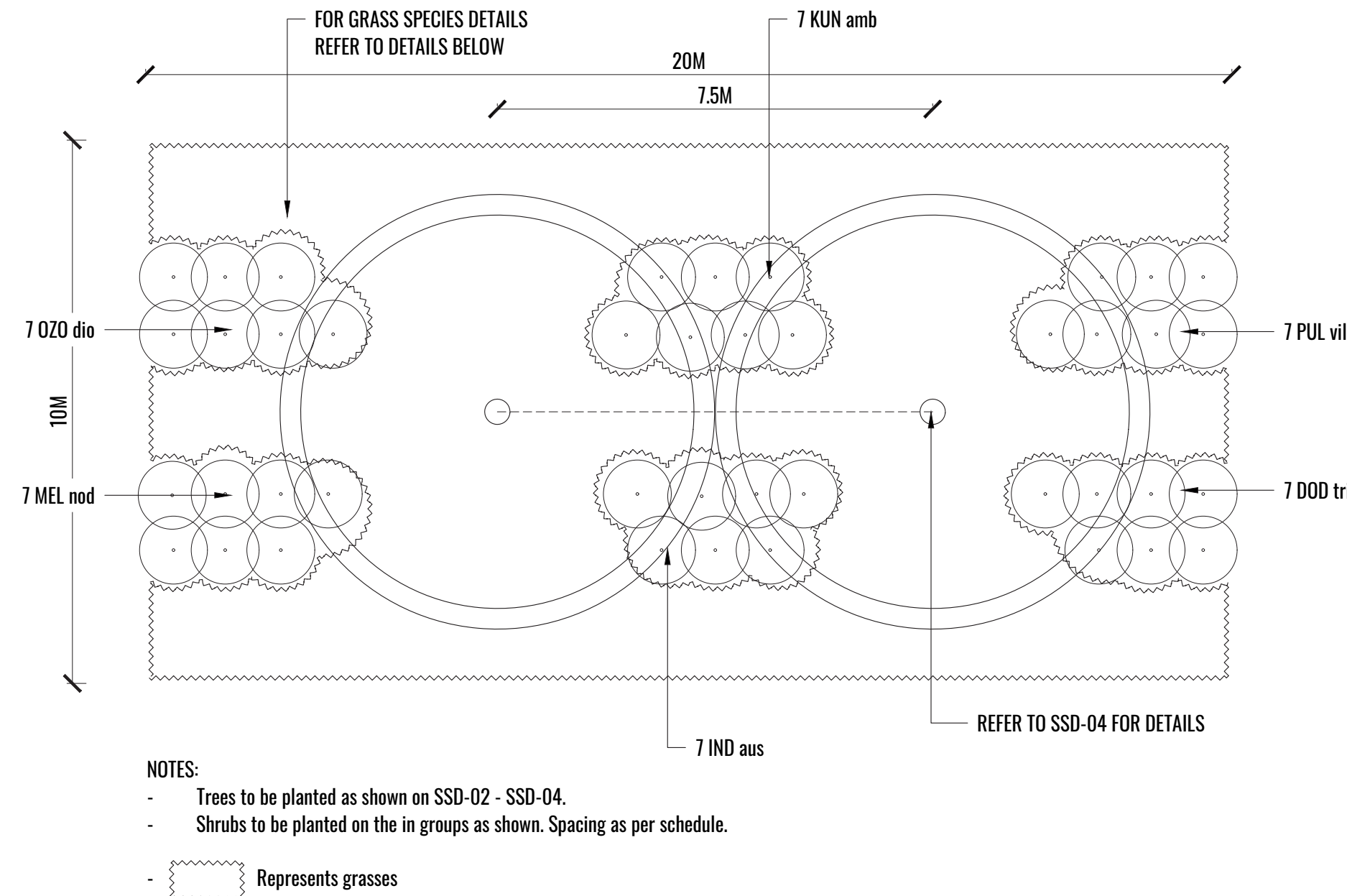
nettletontribe

Client:

Woolworths

Scale:		Date:	Job Number:	North:	Revision				FOR S4.55 APPLICATION	
1:50 @ A1	1:100 @ A3	12.07.21	200606		Rev	Date	Description	Drawn	Checked	
Project:					D	28.09.20	UPDATED FOR SSD	SB	BG	
					E	30.09.20	UPDATED FOR SSD	SB	BG	
					F	16.12.20	UPDATED FOR SSD	PT	BG	
					G	12.07.21	UPDATED FOR S4.55	PT	BG	
CFC Percy Street										
13 Percy Street, Auburn, NSW 2144										

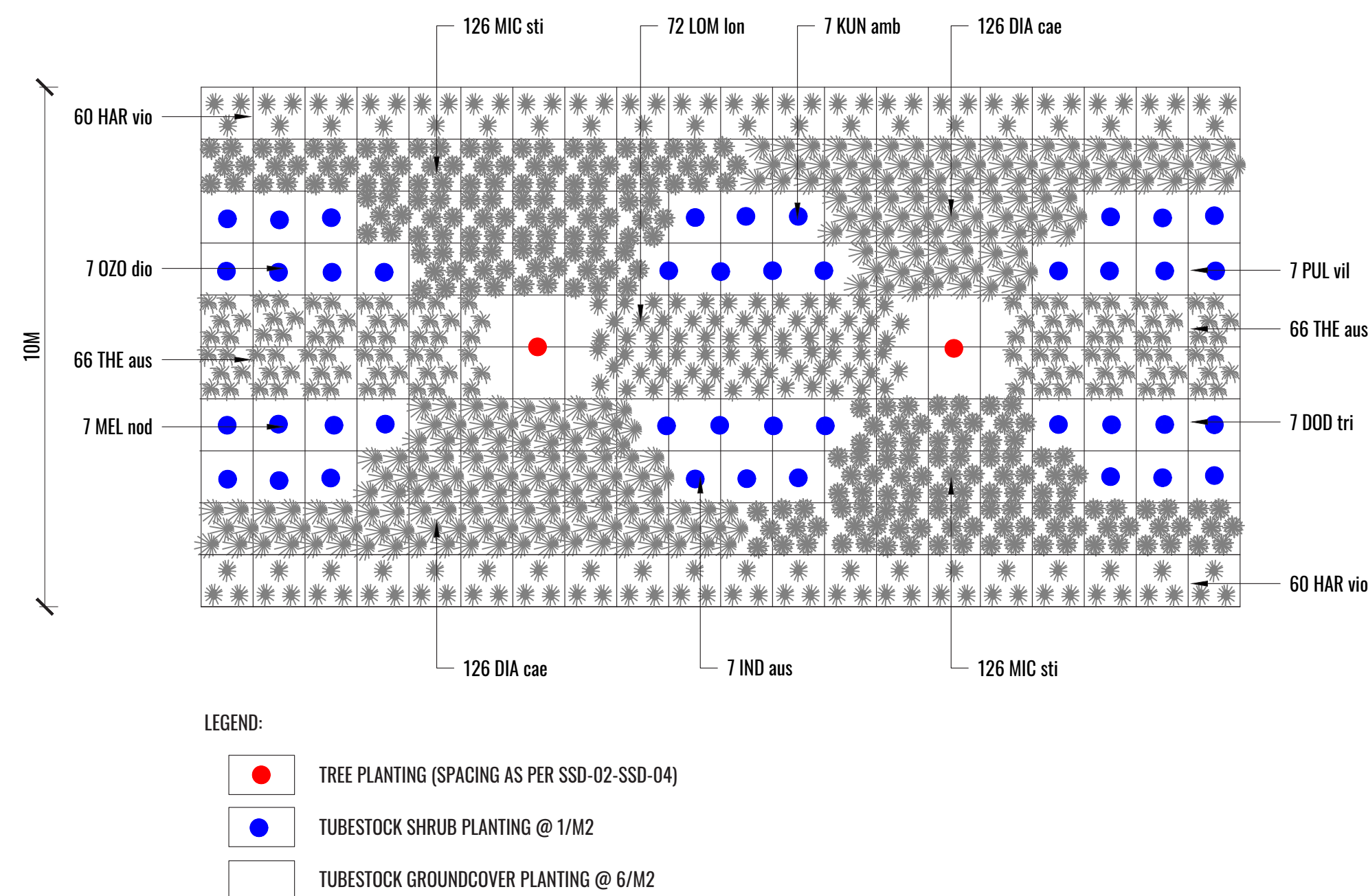
TYPICAL LANDSCAPE DETAILS



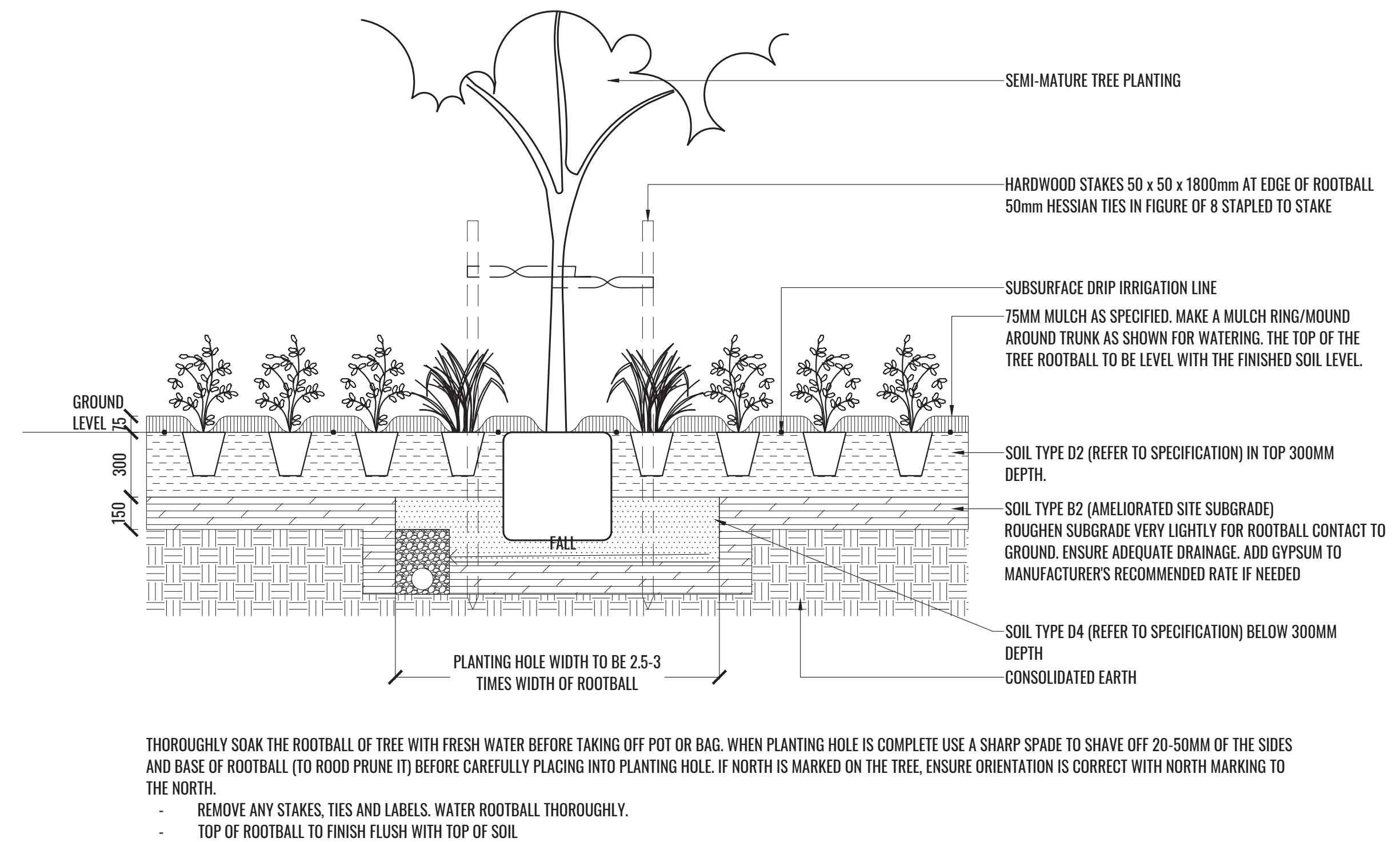
1A GENERAL MATRIX M1 PLANTING LAYOUT (12m x 5m)

PLAN

SCALE 1:100



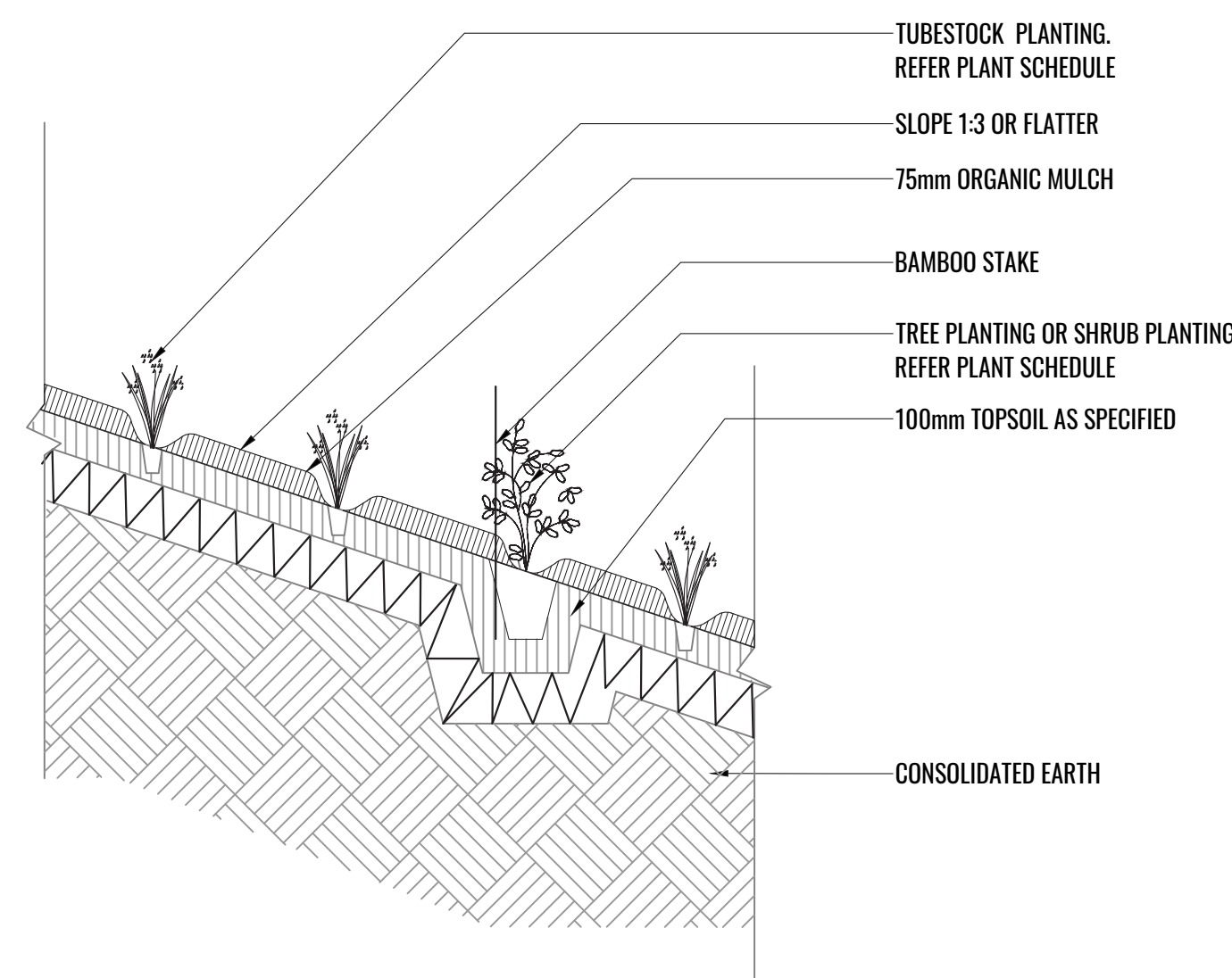
1B DETAIL MATRIX M1 PLANTING LAYOUT (3m x 3m)



2 MASS PLANTING AND TREE DETAIL

TYPICAL SECTION

SCALE 1:20



3 TUBESTOCK PLANTING ON GRADE 1 IN 3 OR FLATTER

TYPICAL SECTION

SCALE 1:20

Drawing Title:
Typical Landscape Details
DWG No:

SSD-10

GEO SCAPES
LANDSCAPE ARCHITECTS

Suite 215, 284 Victoria Ave, Chatswood NSW 2067 Ph. (02) 9411 1485
www.geoscapes.com.au
ABN 84 620 205 781 ACN 620 205 781

Architect:

The logo for Nettletontribe, featuring a stylized lowercase 'n' and 't' in white and grey on a dark background, with the word 'nettletontribe' in lowercase white text below it.

Client:  Woolworths

Scale: As shown @ A1	Date: 12.07.21	Job Number: 200606	North:	Revision FOR \$4.55 APPLICATION				
Project: CFC Percy Street 13 Percy Street, Auburn, NSW 2144	Rev	Date	Description	Drawn	Checked			
	D	28.09.20	UPDATED FOR SSD	SB	BG			
	E	30.09.20	UPDATED FOR SSD	SB	BG			
	F	16.12.20	UPDATED FOR SSD	PT	BG			
	G	12.07.21	UPDATED FOR \$4.55	PT	BG			

MAINTENANCE PLAN & TYPICAL SPECIFICATIONS

Maintenance shall mean the care and maintenance of the landscape works by accepted horticultural practice as rectifying any defects that become apparent in the landscape works under normal use. The landscape contractor shall attend the site on a **weekly basis** to maintain the landscape works commencing from practical completion.

Rubbish Removal

The Landscape Contractor shall undertake rubbish removal from the site on a **weekly basis** to ensure the site remains in tidy condition.

Weed Eradication

Weed growth that may occur in grassed, planted or mulched areas is to be removed using environmentally acceptable methods i.e. non-residual glyphosate herbicide (e.g. ‘Roundup’, applied in accordance with the manufacturer’s direction.

Tree Replacement

Trees shall show signs of healthy vigorous growth and be free from disease and not exhibit signs of stress prior to handover to the client. Any trees or plant that die or fail to thrive, or are damaged or stolen will be replaced. Replacement material shall have the initial maintenance period extended in accordance with the landscape contract conditions. Trees and plant materials shall be equal to the minimum requirements of species specified and approved material delivered to site. Should the condition decline from the approved sample the Superintendent reserves the right to reject the tree / plants.

Frequency: as required.

Stakes

Adjust and/or replace stakes and ties where required. Remove staking and guying when instructed by the Superintendent

Pruning

Selective pruning may be required during the establishment period to promote a balanced canopy structure. These activities shall be carried out to the best horticultural and industry practice. All pruned material is to be removed from site.

Mulched Surfaces

All planter beds and garden areas shall have a minimum depth of 75mm organic mulch. All mulch is to be free of deleterious matter such as soil, weeds, sticks and should conform to AS 4454.

Mulched surfaces are to be kept clean and tidy and free of any deleterious material and foreign matter. Reinstate depths to a uniform level of 75mm with mulch as specified, mulch to be free of any wood material impregnated with CCA or similar toxic treatment. Top up mulch levels prior to handover to client & estate management.

Watering

Implement an appropriate hand watering regime in areas not irrigated in association with current watering programme to maintain plant health and vigour. The program shall reflect seasonal conditions and plant species.

Frequency: Weekly or as required.

Soil In Natural Ground

Non-Australian native garden beds to have soil installed consisting of 50% existing site topsoil and 50% new topsoil equal or equivalent to ‘Organic Garden Mix’ as supplied by Australian Native Landscapes. Australian native garden beds to have soil installed consisting of 50% existing site topsoil and 50% new topsoil equal or equivalent to ‘Native Low ‘P’ Mix’ as supplied by Australian Native Landscapes. Soil to conform to AS4419 refer to typical detail.

Pest and Disease Control

The Landscape Contractor shall spray for pests and disease infestations when the pest and fungal attack has been positively identified and when their populations have increased to a point that will become detrimental to plant growth. Apply all pesticides to manufacturer’s directions.

Frequency: weekly inspection

Fertilising

Generally check for signs of nutrient deficiencies (yellowing of leaves, failure to thrive), and adapt fertiliser regime to suit. Fertiliser should be applied at the beginning and the end of the (summer) growing season.

Irrigation

A sub surface dripper style, electrically automated self timed irrigation system is recommended to be supplied to all garden bed areas. Regular checks are to be made to ensure continued successful operation. The Landscape Contractor shall be responsible for coordination and engagement of a specialist irrigation designer and installation contractor to design, supply and install an automatic subterranean drip irrigation system to all raised planter beds.

The irrigation system will need to provide designated landscaped areas with enough water for vigorous healthy plant growth. As a general rule landscaped areas will need 20-25mm, species dependant, of water per week. The landscape Contractor will need to monitor natural rainfall using a rain switch in order to set irrigation flow rates accordingly on a monthly basis.

Standards

All grown or purchased plant stock must conform to all the conditions and requirements given in NATSPEC Guide: Specifying Trees. Soils to be in accordance with AS4419, mulching composts and conditioners to be in accordance with AS4454. Soils should conform to best practice specifications as listed in the Landscape Soils Handbook (Simon Leake & Elke Haege 2017).

INDICATIVE PLANTING SCHEDULE

PLANT SCHEDULE - FRONT SETBACK & FIRST FLOOR							
CODE	BOTANICAL NAME	COMMON NAME	MATURE HEIGHT	SYDNEY TURPENTINE IRONBARK FOREST SPECIES	SIZE	PLANTING DENSITY	QTY**
Trees							
CUP ANA	<i>Cupaniopsis anacardioides</i>	Tuckeroo	8-15m		100lt	As Shown	7
Shrubs & Hedges							
ACM all	<i>Acmena smithii</i> 'Allyn Magic'	Lilly Pilly	0.5m		200mm	450mm ctrs	16
ACM smi	<i>Acmena smithii</i> 'Sublime'	Lilly Pilly	1.8m*		200mm	750mm ctrs	227
CAL whi	<i>Callistemon citrinus</i> 'White Anzac'	White Bottlebrush	1.5m		200mm	1500mm ctrs	55
COR ref	<i>Correa reflexa</i> 'Bellissimo' TM	Correa	0.5m		200mm	500mm ctrs	143
PHI lil	<i>Philodendron</i> 'Little Phil'	Philodendron	0.4m		200mm	4/m2	102
WES blu	<i>Westringia</i> 'Blue Gem'	Native Rosemary	1.5m		200mm	750mm ctrs	68
WES gre	<i>Westringia</i> 'Grey Box'	Native Rosemary	0.45m		200mm	450mm ctrs	172
Grasses & Groundcovers							
ANI gol	<i>Anigozanthos</i> 'Gold Velvet'	Kangaroo Paw	0.5m		140mm	4/m2	245
ANI rub	<i>Anigozanthos</i> 'Ruby Velvet'	Kangaroo Paw	0.4m		140mm	4/m2	342
DIA cae	<i>Dianella caerulea</i>	Blue Flax Lily	0.7m	✓	Tubestock	6/m2	460
DIA rev	<i>Dianella revoluta</i>	Native Flax Lily	0.6m		Tubestock	6/m2	305
ERE gla	<i>Eremophila glabra</i>	Tar Bush	0.3m		140mm	3/m2	51
HAR vio	<i>Hardenbergia violacea</i>	False Sarsparilla	0.3m	✓	140mm	3/m2	492
LIB pan	<i>Libertia paniculata</i>	Grass Flag	0.5m		Tubestock	6/m2	204
LOM tan	<i>Lomandra longifolia</i> 'Tanika'	Spiny Mat Rush	0.5-0.6m		Tubestock	6/m2	296
PEN alo	<i>Pennisetum alopecuroides</i> 'Nafray'	Swamp Foxtail Grass	0.7m		Tubestock	6/m2	416
VIO hed	<i>Viola hederacea</i>	Native Violet	0.3m		140mm	3/m2	338
Climbers & Trailing plants							
DIC sil	<i>Dichondra argenteata</i> 'Silver Falls'	Silver Falls Dicondra	Trailing		140mm	7/m2	28
TRA jas	<i>Trachelospermum jasminoides</i>	Star Jasmine	Climber		140mm	As Shown	31
* Hedges to be clipped to recommended height							
** Final numbers to be determined at CC stage							

PLANT SCHEDULE - REAR 10M WIDE SETBACK (MATRIX M1 PLANTING)							
CODE	BOTANICAL NAME	COMMON NAME	MATURE HEIGHT	SYDNEY TURPENTINE IRONBARK FOREST SPECIES	SIZE	PLANTING DENSITY	QTY**
Trees							
EUC PAN	<i>Eucalyptus paniculata</i>	Grey Ironbark	30m	✓	Tubestock	As Shown	9
MEL STY	<i>Melaleuca styphelioides</i>	Prickly Paperbark	20m		Tubestock	As Shown	6
SYN GLO	<i>Syncarpia glomulifera</i>	Turpentine Tree	30m	✓	Tubestock	As Shown	9
Shrubs & Hedges							
DOD tri	<i>Dodonaea triquetra</i>	Hop Bush	2-3m	✓	Tubestock	As Shown	58
IND aus	<i>Indigofera australis</i>	Native Indigo	2m	✓	Tubestock	As Shown	58
KUN amb	<i>Kunzea ambigua</i>	Tick Bush	2-3m	✓	Tubestock	As Shown	58
MEL nod	<i>Melaleuca nodosa</i>	Prickly Leaved Paperbark	3m	✓	Tubestock	As Shown	58
OZO dio	<i>Ozothamnus diosmifolius</i>	Rice Flower	2.5m	✓	Tubestock	As Shown	58
PUL vil	<i>Pultenea villosa</i>	Hairy Bush Pea	1.5-2m	✓	Tubestock	As Shown	58
Grasses & Groundcovers							
DIA cae	<i>Dianella caerulea</i>	Blue Flax Lily	1m	✓	Tubestock	6/m2	2091
HAR vio	<i>Hardenbergia violacea</i>	False Sarsparilla	0.3m	✓	Tubestock	3/m2	996
LOM lon	<i>Lomandra longifolia</i>	Spiny Mat Rush	0.5-0.6m	✓	Tubestock	6/m2	598
MIC sti	<i>Microlaena stipoides</i>	Weeping Grass	0.7m	✓	Tubestock	6/m2	2092
THE aus	<i>Themeda australis</i>	Kangaroo Grass	0.8m	✓	Tubestock	6/m2	1096
** Final numbers to be determined at CC stage							

PLANT IMAGES



Cupaniopsis anacardioides



Eucalyptus paniculata



Melaleuca styphelioides



Syncarpia glomulifera



Acmena smithii 'Sublime'



Dodonaea triquetra



Philodendron 'Little Phil'



Kunzea ambigua



Correa reflexa 'Bellissimo'



Indigofera australis



Ozothamnus diosmifolius



Pultenea villosa



Westringia 'Blue Gem'



Anigozanthos 'Ruby Velvet'



Dianella caerulea



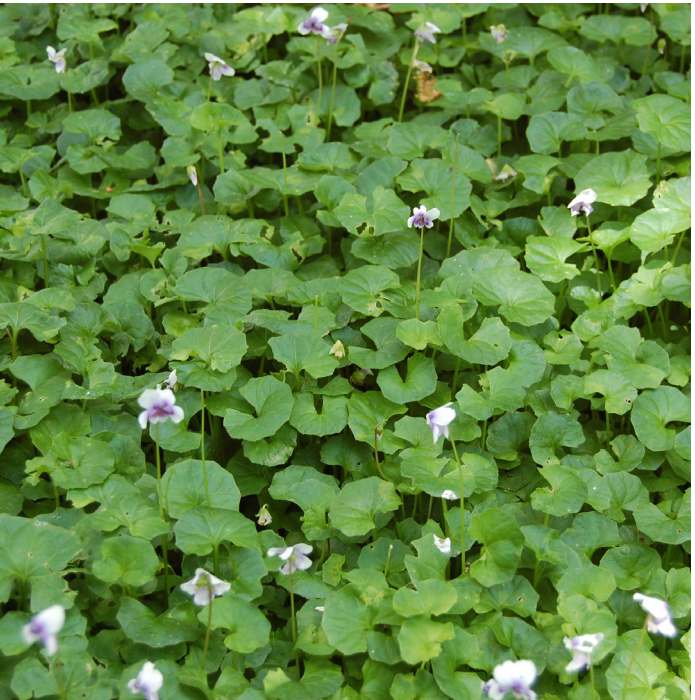
Lomandra longifolia 'Tanika'



Pennisetum alopecuroides 'Nafray'



Hardenbergia violacea



Viola hederacea



Trachelospermum jasminoides

Drawing Title:
Planting Schedule & Imagery
DWG No:

SSD-12

GEOSCAPHESLANDSCAPE ARCHITECTS

Suite 215, 284 Victoria Ave, Chatswood NSW 2067 Ph. (02) 9411 1485
www.geoscapes.com.au
ABN 84 620 205 781 ACN 620 205 781

Architect:

Client:

Scale:	Date:	Job Number:	North:	Revision					FOR \$4.55 APPLICATION	
				Rev	Date	Description	Drawn	Checked		
Project:	CFC Percy Street 13 Percy Street, Auburn, NSW 2144	200606		D	28.09.20	UPDATED FOR SSD	SB	BG		
				E	30.09.20	UPDATED FOR SSD	SB	BG		
				F	16.12.20	UPDATED FOR SSD	PT	BG		
				G	12.07.21	UPDATED FOR \$4.55	PT	BG		