

# CFC Percy St. Auburn

13 Percy Street, Auburn, NSW 2144

27.09.21



## DRAWING LIST

No.	SHEET NAME	REVISION
DA000	Cover Page	G
DA001	Site Plan	E
DA002	Demolition Plan	C
DA011	Ground Floor Plan	M
DA012	Mezz 2/L1 Floor Plan	H
DA013	Roof Plan	D
DA014	Mezz 1 Floor Plan	F
DA015	Office Floor Plans	C

## DRAWING LIST

No.	SHEET NAME	REVISION
DA021	Elevations - Sheet 1	F
DA022	Elevations - Sheet 2	G
DA025	Signage Elevations	B
DA031	Sections	F
DA051	Shadow Diagrams	B
DA091	Perspectives - Sheet 1	B
DA092	Perspectives - Sheet 2	B



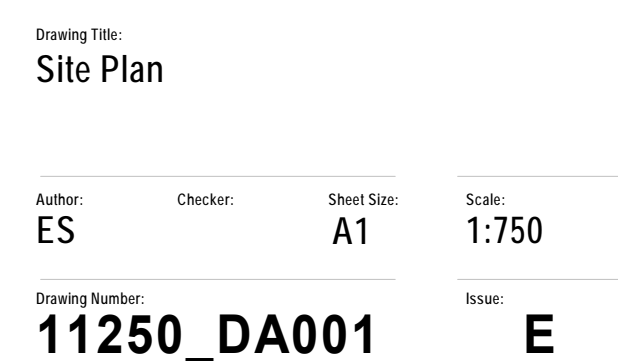
1. Carpark layout change due to additional mech.plant rooms & boomgate
2. Extension of roof over L1 office entry
3. Added external egress stair, awning over DTB bays and plant deck
4. Added external egress stair to access mezz. floors and roof
5. Added mech. exhaust & plant on roof & removed translucent roof sheets
6. Inbound dock awning is reduced
7. Added mech & refrigeration plant rooms on rear elevated plant deck, and associated egress stair
8. Added removal of existing concrete channel in demolition
9. Additional DTB store and DTB bays, including changed configuration of DTB bays
10. Office internal layout amended
11. Added landscape area, aluminium screen & gates
12. Southern plant area layout changed as following
  - Minor change to solar and switch room layout
  - Sub & HVC updated
  - Permanent generator reduced to single large gen. Portable gen is added
  - Diesel tank is added for backup generators
  - Armco is added around sub & sprinkler plant area
13. Precast wall is erected higher to support the rear elevated plant deck
14. Maintenance and wash bays are added
15. Added an external stair to inbound dock area
16. Security gates added
17. Boom gates added
18. Minor enlarged L1 office lobby & additional stair next to rec area
19. NOT USED
20. Mech. Louvre added
21. Heavy duty guardrail added to suspended slab edges
22. Replaced transparent wall sheeting to Longline metal cladding
23. Pickup graphic extended
24. CFC sheeting is removed from Office ground elevation
25. NOT USED
26. Outbound Loading dock size & Van parking size increased (TBC)
27. Two mechanical plant rooms on carpark level added
28. Added 3 flag poles
29. Added 2 lightning poles
30. Added generator on slab above switch and solar rooms



Builder and/or subcontractors shall verify all project dimensions before commencing on-site work or off-site fabrication. Figured dimensions shall take precedence over scaled dimensions. This drawing is copyright and cannot be reproduced in whole or in part or by any medium without the written permission of Nettleton Tribe Partnership Pty Ltd.

Project Name  
**CFC Percy St. Auburn**

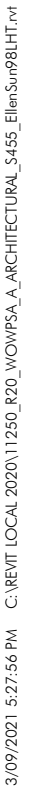
Project Address  
**13 Percy Street, Auburn, NSW 2144**



nettleton tribe partnership Pty Ltd ABN 58 161 683 122  
117 Willoughby Road, Crows Nest, NSW 2065  
t +61 2 9431 6431  
e: [sydney@nettletontribe.com.au](mailto:sydney@nettletontribe.com.au) w: [nettletontribe.com.au](http://nettletontribe.com.au)



1. Carpark layout change due to additional mech.plant rooms & boomgate
2. Extension of roof over L1 office entry
3. Added external egress stair, awning over DTB bays and plant deck
4. Added external egress stair to access mezz. floors and roof
5. Added mech. exhaust & plant on roof & removed translucent roof sheets
6. Inbound dock awning is reduced
7. Added mech & refrigeration plant rooms on rear elevated plant deck, and associated egress stair
8. Added removal of existing concrete channel in demolition
9. Additional DTB store and DTB bays, including changed configuration of DTB bays
10. Office internal layout amended
11. Added landscape area, aluminium screen & gates
12. Southern plant area layout changed as following
  - Minor change to solar and switch room layout
  - Sub & HVC updated
  - Permanent generator reduced to single large gen. Portable gen is added
  - Diesel tank is added for backup generators
  - Armco is added around sub & sprinkler plant area
13. Precast wall is erected higher to support the rear elevated plant deck
14. Maintenance and wash bays are added
15. Added an external stair to inbound dock area
16. Security gates added
17. Boom gates added
18. Minor enlarged L1 office lobby & additional stair next to rec area
19. NOT USED
20. Mech. Louvre added
21. Heavy duty guardrail added to suspended slab edges
22. Replaced transparent wall sheeting to Longline metal cladding
23. Pickup graphic extended
24. CFC sheeting is removed from Office ground elevation
25. NOT USED
26. Outbound Loading dock size & Van parking size increased (TBC)
27. Two mechanical plant rooms on carpark level added
28. Added 3 flag poles
29. Added 2 lightning poles



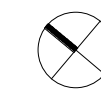
Client

Woolworths

Builder and/or subcontractors shall verify all project dimensions before commencing on-site work or off-site fabrication. Figured dimensions shall take precedence over scaled dimensions. This drawing is copyright and cannot be reproduced in whole or in part by any medium without the written permission of Nettleton Tribe Partnership Pty Ltd.

Project Name  
**CFC Percy St. Auburn**

Project Address  
**13 Percy Street, Auburn, NSW 2144**



Scale:  
**1:500**

Issue:  
**C**

nettleton tribe partnership Pty Ltd ABN 58 161 683 122  
117 Wolloughby Road, Crows Nest, NSW 2065  
t +61 2 9431 6431  
e: [sydney@nettletontribe.com.au](mailto:sydney@nettletontribe.com.au) w: [nettletontribe.com.au](http://nettletontribe.com.au)



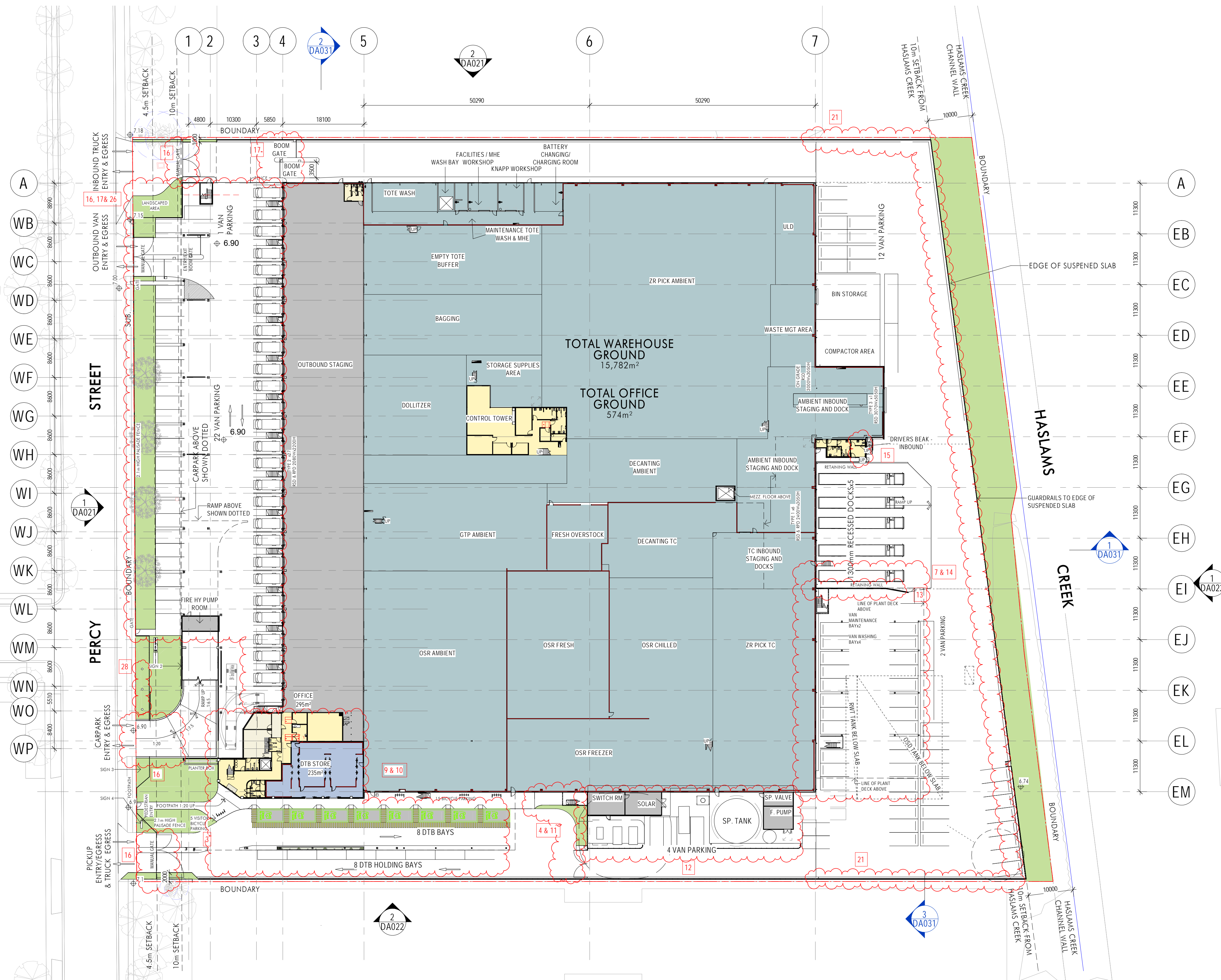
DEVELOPMENT SCHEDULE	
SITE AREA	32,453 m <sup>2</sup>
WAREHOUSE	18,305 m <sup>2</sup>
GROUND FLOOR	15,782 m <sup>2</sup>
MEZZ. 1 FLOOR	220 m <sup>2</sup>
MEZZ. 2 FLOOR	2,303 m <sup>2</sup>
OFFICE	1,600 m <sup>2</sup>
CFC OFFICE - GROUND	574 m <sup>2</sup>
CFC OFFICE - MEZZ 1	65 m <sup>2</sup>
CFC OFFICE - L1	961 m <sup>2</sup>
DTB STORE	235 m <sup>2</sup>
TOTAL GFA AREA	20,140 m <sup>2</sup>
PARKING	
STAFF PARKING	144
DTB BAYS	8
DTB HOLDING BAYS	8
VAN PARKING	88
INBOUND DOCKS	5
OUTBOUND DOCKS	27

NOTE: NON-OPERATIONAL AREA (2,010 m<sup>2</sup>) SHOWN IN DARK GREY IS NOT INCLUDED IN TOTAL GFA AREA

#### S4.55 - AMENDMENT LIST

- Carpark layout change due to additional mech.plant rooms & boomgate
- Extension of roof over L1 office entry
- Added external egress stair, awning over DTB bays and plant deck
- Added external egress stair to access mezz. floors and roof
- Added mech. exhaust & plant on roof & removed translucent roof sheets
- Inbound dock awning is reduced
- Added mech & refrigeration plant rooms on rear elevated plant deck, and associated egress stair
- Added removal of existing concrete channel in demolition
- Additional DTB store and DTB bays, including changed configuration of DTB bays
- Office internal layout amended
- Added landscape area, aluminium screen & gates
- Southern plant area layout changed as following
  - Minor change to solar and switch room layout
  - Sub & HVC updated
  - Permanent generator reduced to single large gen. Portable gen is added
  - Diesel tank is added for backup generators
  - Armco is added around sub & sprinkler plant area
- Precast wall is erected higher to support the rear elevated plant deck
- Maintenance and wash bays are added
- Added an external stair to inbound dock area
- Security gates added
- Boom gates added
- Minor enlarged L1 office lobby & additional stair next to rec area
- NOT USED
- Mech. Louvre added
- Heavy duty guardrail added to suspended slab edges
- Replaced transparent wall sheeting to Longline metal cladding
- Pickup graphic extended
- CFC sheeting is removed from Office ground elevation
- NOT USED
- Outbound Loading dock size & Van parking size increased (TBC)
- Two mechanical plant rooms on carpark level added
- Added 3 flag poles
- Added 2 lightning poles
- Added generator on slab above switch and solar rooms

ISSUE FOR S4.55

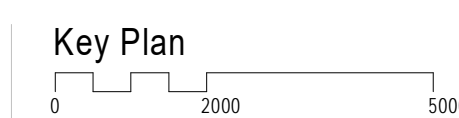


Issue	Description	Date
M	Issue for S4.55	27.09.21
L	Issue for S4.55	21.09.21
K	Issue for S4.55	17.09.21
J	Issue for S4.55	14.09.21
H	Issue for S4.55	09.09.21
G	SSDA UPDATE	08.04.21
F	SSDA UPDATE	08.04.21
E	DRAFT SSDA UPDATE	07.04.21
D	FOR PLANNER REVIEW	25.03.21
C	Updated for SSDA	17.12.20
B	Updated for SSDA	14.12.20
A	Issue for SSDA	01.10.20
P2	Draft DA	25.09.20
P1	Draft DA	18.09.20

Builder and/or subcontractors shall verify all project dimensions before commencing on-site work or off-site fabrication. Figured dimensions shall take precedence over scaled dimensions. This drawing is copyright and cannot be reproduced in whole or in part or by any medium without the written permission of Nettleton Tribe Partnership Pty Ltd.

Builder

Project Name  
**CFC Percy St. Auburn**  
Project Address  
**13 Percy Street, Auburn, NSW 2144**



Drawing Title:  
**Ground Floor Plan**

Author: ES/AO  
Checker: ES  
Sheet Size: A1  
Drawing Number: **11250\_DA011**

Scale: 1:500  
Issue: **M**

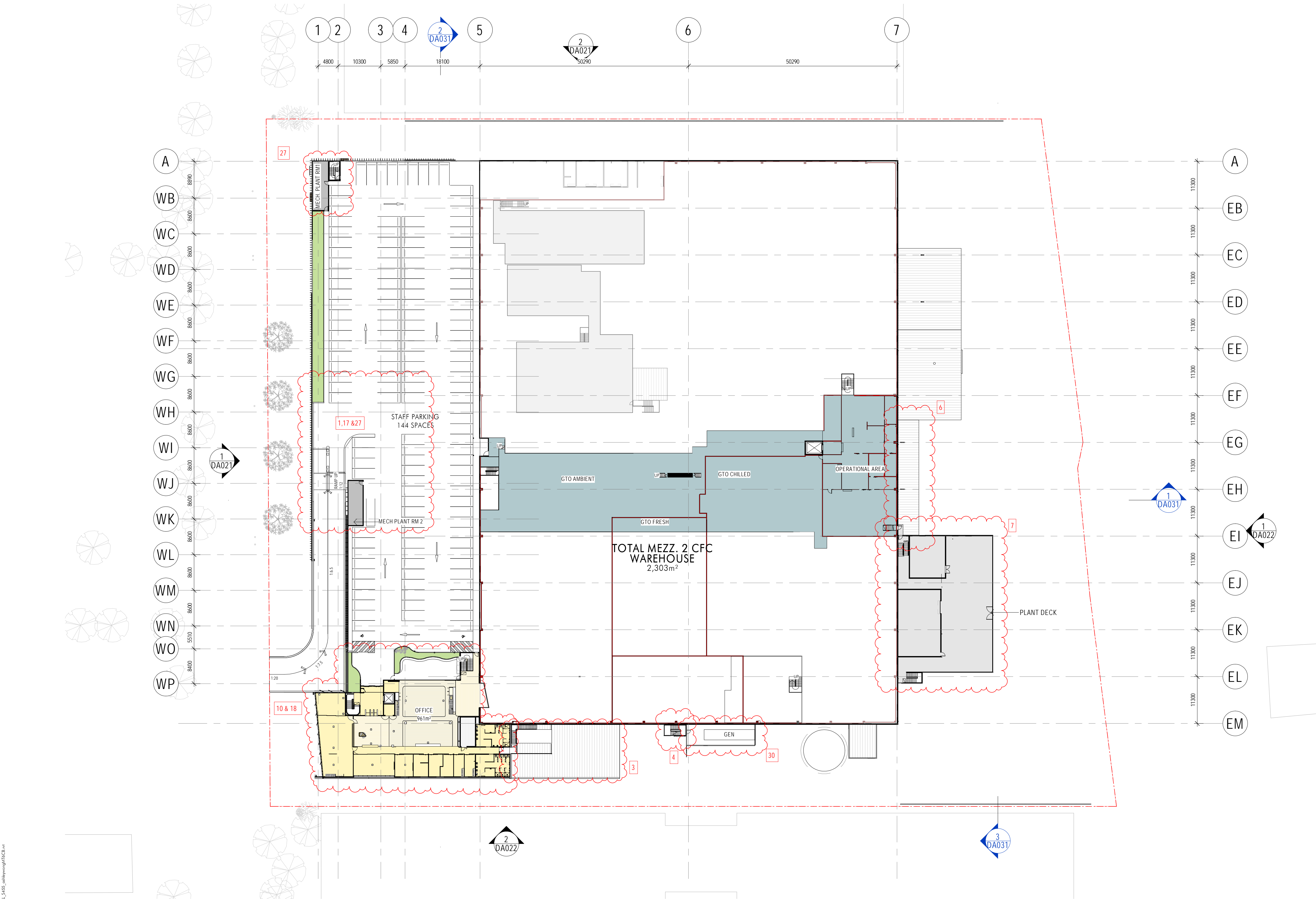
**nettletontribe**

nettleton tribe partnership pty ltd ABN 58 161 683 122  
117 Willoughby Road, Crows Nest, NSW 2065  
t +61 2 9431 6431  
e: sydney@nettletontribe.com.au w: nettletontribe.com.au



S4.55 - AMENDMENT LIST

1. Carpark layout change due to additional mech.plant rooms & boomgate
2. Extension of roof over L1 office entry
3. Added external egress stair, awning over DTB bays and plant deck
4. Added external egress stair to access mezz. floors and roof
5. Added mech. exhaust & plant on roof & removed translucent roof sheets
6. Inbound dock awning is reduced
7. Added mech & refrigeration plant rooms on rear elevated plant deck, and associated egress stair
8. Added removal of existing concrete channel in demolition
9. Additional DTB store and DTB bays, including changed configuration of DTB bays
10. Office internal layout amended
11. Added landscape area, aluminium screen & gates
12. Southern plant area layout changed as following
  - Minor change to solar and switch room layout
  - Sub & HVC updated
  - Permanent generator reduced to single large gen. Portable gen is added
  - Diesel tank is added for backup generators
  - Armco is added around sub & sprinkler plant area
13. Precast wall is erected higher to support the rear elevated plant deck
14. Maintenance and wash bays are added
15. Added an external stair to inbound dock area
16. Security gates added
17. Boom gates added
18. Minor enlarged L1 office lobby & additional stair next to rec area
19. NOT USED
20. Mech. Louvre added
21. Heavy duty guardrail added to suspended slab edges
22. Replaced transparent wall sheeting to Longline metal cladding
23. Pickup graphic extended
24. CFC sheeting is removed from Office ground elevation
25. NOT USED
26. Outbound Loading dock size & Van parking size increased (TBC)
27. Two mechanical plant rooms on carpark level added
28. Added 3 flag poles
29. Added 2 lightning poles
30. Added generator on slab above switch and solar rooms



ISSUE FOR S4.55

Client



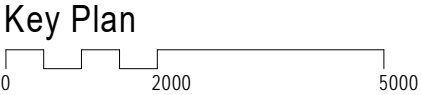
27/09/2021 4:21:53 PM C:\REVIT\LOCAL\2020\11256\_025\_WOV\PLA\_ARCHITECTURAL\_S405\_s4h\woolworths\W623.rvt

Issue	Description	Date
H	Issue for S4.55	27.09.21
G	Issue for S4.55	17.09.21
F	Issue for S4.55	03.09.21
E	SSDA UPDATE	08.04.21
D	DRAFT SSDA UPDATE	07.04.21
C	FOR PLANNER REVIEW	25.03.21
B	Updated for SSDA	15.12.20
A	Issue for SSDA	01.10.20
P2	Issue for SSDA	20.09.20
P1	Draft DA	18.09.20

Builder and/or subcontractors shall verify all project dimensions before commencing on-site work or off-site fabrication. Figured dimensions shall take precedence over scaled dimensions. This drawing is copyright and cannot be reproduced in whole or in part or by any medium without the written permission of Nettleton Tribe Partnership Pty Ltd.

Builder

Project Name  
**CFC Percy St. Auburn**  
Project Address  
**13 Percy Street, Auburn, NSW 2144**



Drawing Title:  
**Mezz 2/L1 Floor Plan**

Author:  
**ES/AO**  
Checker:  
**ES**  
Sheet Size:  
**A1**  
Drawing Number:  
**11250\_DA012**

Scale:  
**1:500**  
Issue:  
**H**

**nettletontribe**

nettleton tribe partnership Pty Ltd ABN 58 161 683 122  
117 Willoughby Road, Crows Nest, NSW 2065  
t +61 2 9431 6431  
e: sydney@nettletontribe.com.au w: nettletontribe.com.au



1. Carpark layout change due to additional mech.plant rooms & boomgate
2. Extension of roof over L1 office entry
3. Added external egress stair, awning over DTB bays and plant deck
4. Added external egress stair to access mezz. floors and roof
5. Added mech. exhaust & plant on roof & removed translucent roof sheets
6. Inbound dock awning is reduced
7. Added mech & refrigeration plant rooms on rear elevated plant deck, and associated egress stair
8. Added removal of existing concrete channel in demolition
9. Additional DTB store and DTB bays, including changed configuration of DTB bays
10. Office internal layout amended
11. Added landscape area, aluminium screen & gates
12. Southern plant area layout changed as following
  - Minor change to switch and control room layout
  - Sub & HVC updated
  - Permanent generator reduced to single large gen. Portable gen is added
  - Diesel tank is added for backup generators
  - Armco is added around sub & sprinkler plant area
13. Precast wall is erected higher to support the rear elevated plant deck
14. Maintenance and wash bays are added
15. Added an external stair to inbound dock area
16. Security gates added
17. Boom gates added
18. Minor enlarged L1 office lobby & additional stair next to rec area
19. NOT USED
20. Mech. Louvre added
21. Heavy duty guardrail added to suspended slab edges
22. Replaced transparent wall sheeting to Longline metal cladding
23. Pickup graphic extended
24. CFC sheeting is removed from Office ground elevation
25. NOT USED
26. Outbound Loading dock size & Van parking size increased (TBC)
27. Two mechanical plant rooms on carpark level added
28. Added 3 flag poles
29. Added 2 lightning poles
30. Added generator on slab above switch and solar rooms

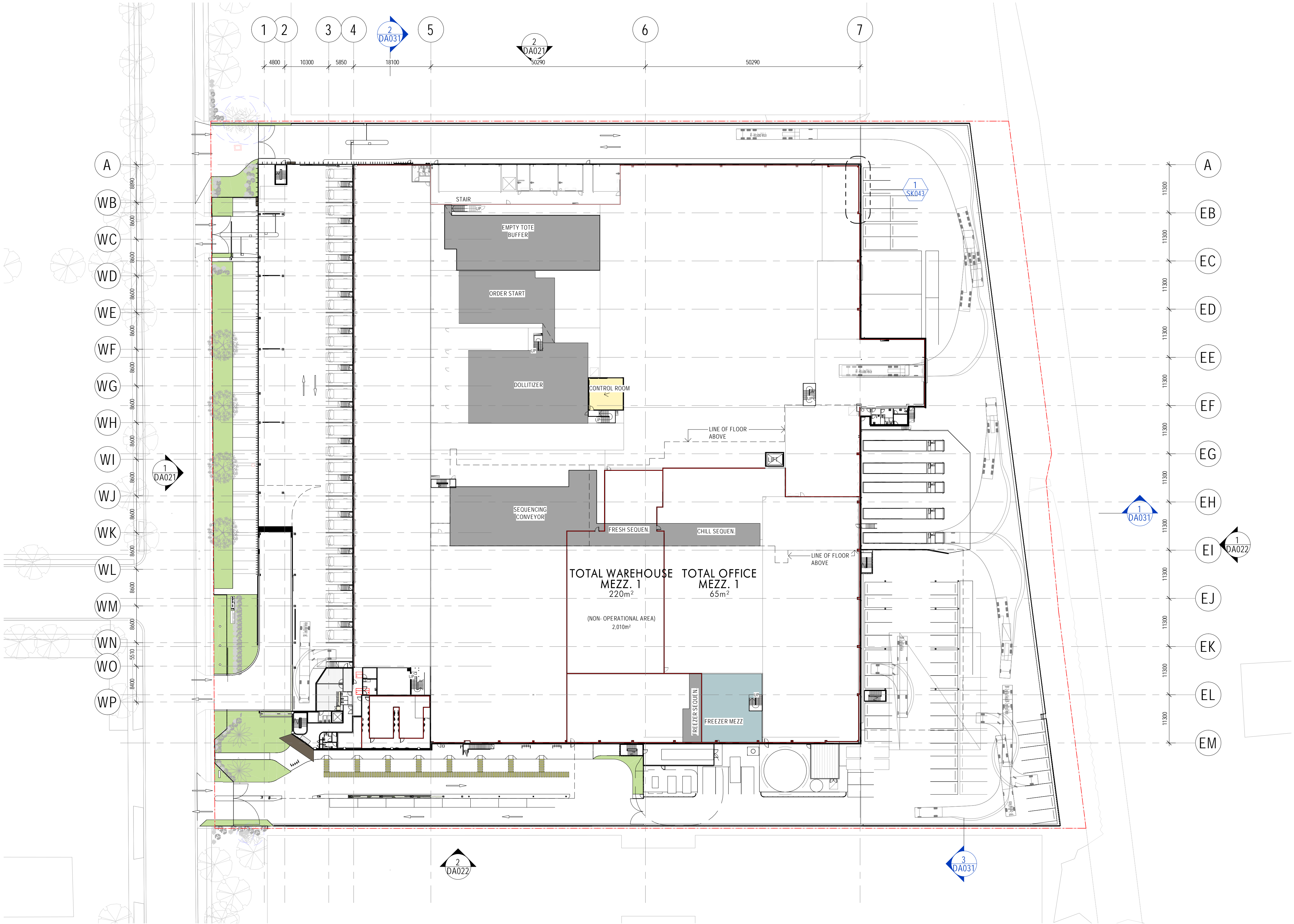


nettleton tribe partnership Pty Ltd ABN 58 161 683 122  
117 Willoughby Road, Crows Nest, NSW 2065  
t +61 2 9431 6431  
e: [sydney@nettletontribe.com.au](mailto:sydney@nettletontribe.com.au) w: [nettletontribe.com.au](http://nettletontribe.com.au)



S4.55 - AMENDMENT LIST

1. Carpark layout change due to additional mech.plant rooms & boomgate
2. Extension of roof over L1 office entry
3. Added external egress stair, awning over DTB bays and plant deck
4. Added external egress stair to access mezz. floors and roof
5. Added mech. exhaust & plant on roof & removed translucent roof sheets
6. Inbound dock awning is reduced
7. Added mech & refrigeration plant rooms on rear elevated plant deck, and associated egress stair
8. Added removal of existing concrete channel in demolition
9. Additional DTB store and DTB bays, including changed configuration of DTB bays
10. Office internal layout amended
11. Added landscape area, aluminium screen & gates
12. Southern plant area layout changed as following
  - Minor change to solar and switch room layout
  - Sub & HVC updated
  - Permanent generator reduced to single large gen. Portable gen is added
  - Diesel tank is added for backup generators
  - Armco is added around sub & sprinkler plant area
13. Precast wall is erected higher to support the rear elevated plant deck
14. Maintenance and wash bays are added
15. Added an external stair to inbound dock area
16. Security gates added
17. Boom gates added
18. Minor enlarged L1 office lobby & additional stair next to rec area
19. NOT USED
20. Mech. Louvre added
21. Heavy duty guardrail added to suspended slab edges
22. Replaced transparent wall sheeting to Longline metal cladding
23. Pickup graphic extended
24. CFC sheeting is removed from Office ground elevation
25. NOT USED
26. Outbound Loading dock size & Van parking size increased (TBC)
27. Two mechanical plant rooms on carpark level added
28. Added 3 flag poles
29. Added 2 lightning poles
30. Added generator on slab above switch and solar rooms



ISSUE FOR S4.55

Client



Issue	Description	Date
F	Issue for S4.55	27.09.21
E	Issue for S4.55	14.09.21
D	Issue for S4.55	03.09.21
C	SSDA UPDATE	08.04.21
B	DRAFT SSDA UPDATE	07.04.21
A	FOR PLANNER REVIEW	25.09.21

Builder and/or subcontractors shall verify all project dimensions before commencing on-site work or off-site fabrication. Figured dimensions shall take precedence over scaled dimensions. This drawing is copyright and cannot be reproduced in whole or in part or by any medium without the written permission of Nettleton Tribe Partnership Pty Ltd.

Builder

Project Name  
**CFC Percy St. Auburn**  
Project Address  
**13 Percy Street, Auburn, NSW 2144**



Drawing Title:  
**Mezz 1 Floor Plan**

Author:  
**ES/AO**  
Checker:  
**ES**  
Sheet Size:  
**A1**  
Drawing Number:  
**11250\_DA014**

Scale:  
**1:500**  
Issue:  
**F**

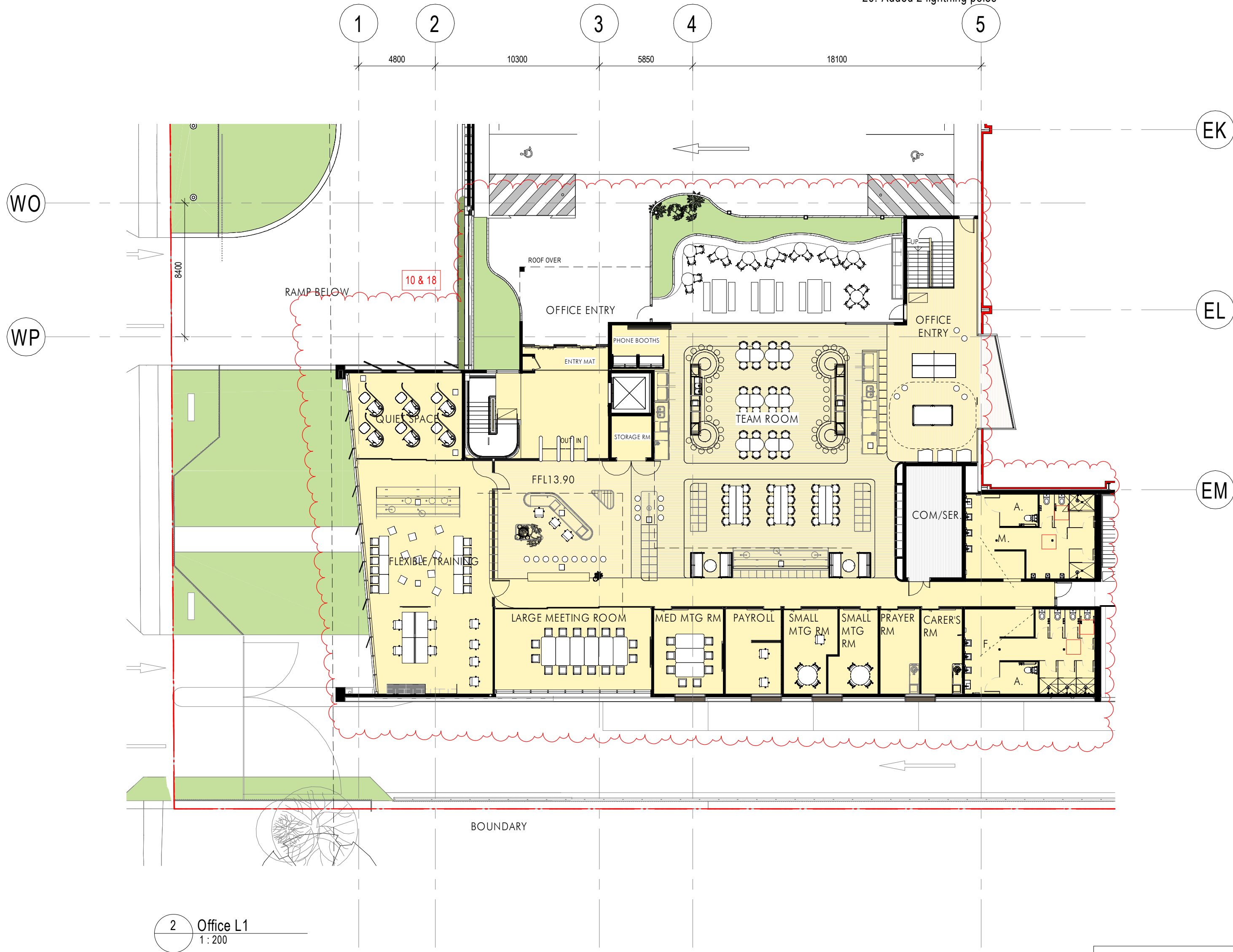
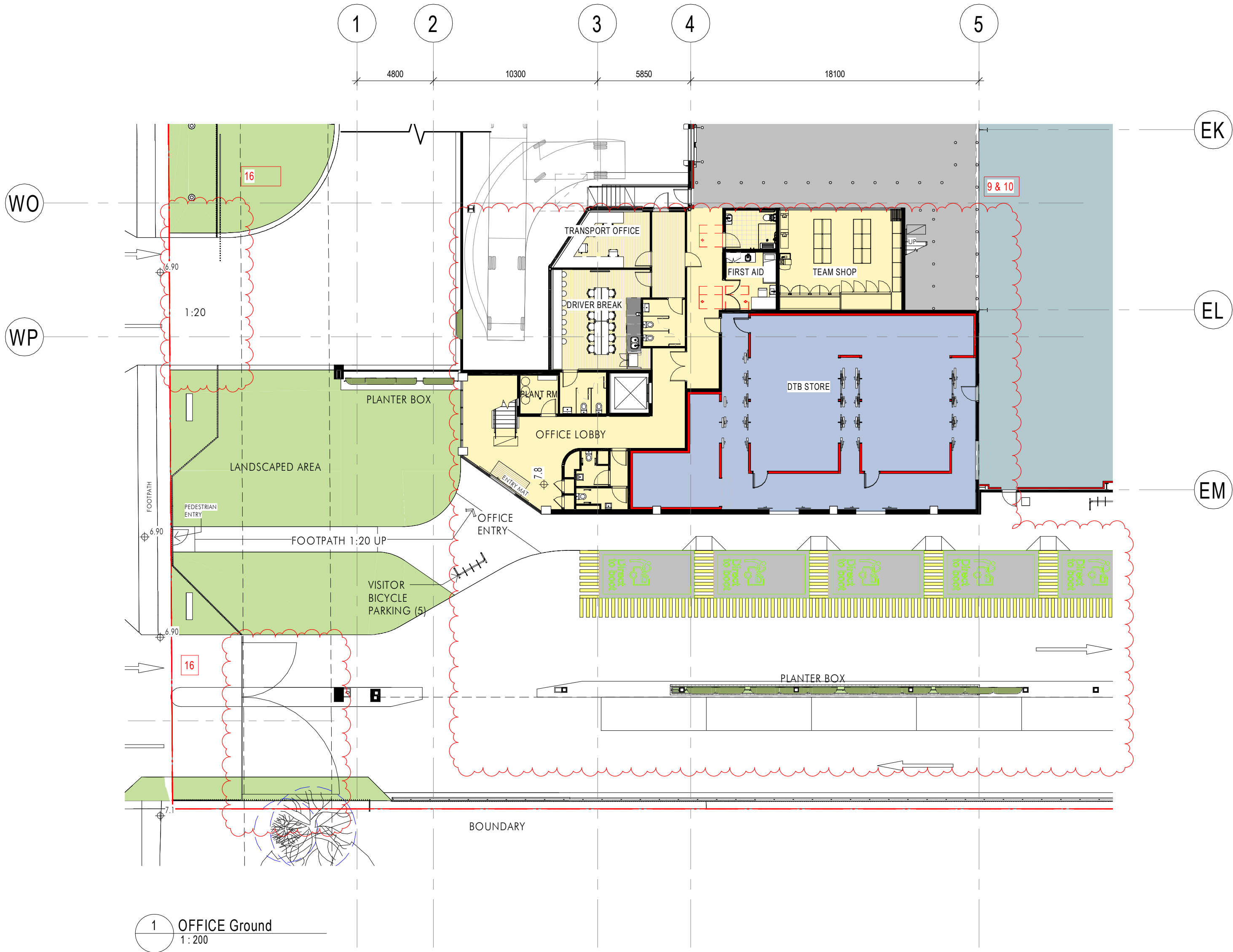
nettletontribe

nettleton tribe partnership Pty Ltd ABN 58 161 683 122  
117 Willoughby Road, Crows Nest, NSW 2065  
t +61 2 9431 6431  
e: sydney@nettletontribe.com.au w: nettletontribe.com.au



S4.55 - AMENDMENT LIST

1. Carpark layout change due to additional mech.plant rooms & boomgate
2. Extension of roof over L1 office entry
3. Added external egress stair, awning over DTB bays and plant deck
4. Added external egress stair to access mezz. floors and roof
5. Added mech. exhaust & plant on roof & removed translucent roof sheets
6. Inbound dock awning is reduced
7. Added mech & refrigeration plant rooms on rear elevated plant deck, and associated egress stair
8. Added removal of existing concrete channel in demolition
9. Additional DTB store and DTB bays, including changed configuration of DTB bays
10. Office internal layout amended
11. Added landscape area, aluminium screen & gates
12. Southern plant area layout changed as following
  - Minor change to solar and switch room layout
  - Sub & HVC updated
  - Permanent generator reduced to single large gen. Portable gen is added
  - Diesel tank is added for backup generators
  - Armco is added around sub & sprinkler plant area
13. Precast wall is erected higher to support the rear elevated plant deck
14. Maintenance and wash bays are added
15. Added an external stair to inbound dock area
16. Security gates added
17. Boom gates added
18. Minor enlarged L1 office lobby & additional stair next to rec area
19. NOT USED
20. Mech. Louvre added
21. Heavy duty guardrail added to suspended slab edges
22. Replaced transparent wall sheeting to Longline metal cladding
23. Pickup graphic extended
24. CFC sheeting is removed from Office ground elevation
25. NOT USED
26. Outbound Loading dock size & Van parking size increased (TBC)
27. Two mechanical plant rooms on carpark level added
28. Added 3 flag poles
29. Added 2 lightning poles



ISSUE FOR S4.55

30/09/2021 6:23:01 PM C:\NET\LOCAL\2020\11250\_11250\_WOOLWORTHS\_ARCHITECTURAL\_S405\_Basic.dwg User: hnt

Client

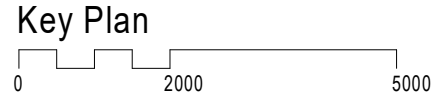


Issue	Description	Date
C	Issue for S4.55	03.09.21
B	Updated for SSDA	14.12.20
A	Issue for SSDA	01.10.20
P2	Issue for SSDA	29.09.20
P1	Draft DA	18.09.20

Builder and/or subcontractors shall verify all project dimensions before commencing on-site work or off-site fabrication. Figured dimensions shall take precedence over scaled dimensions. This drawing is copyright and cannot be reproduced in whole or in part by any medium without the written permission of Nettleton Tribe Partnership Pty Ltd.

Builder

Project Name  
**CFC Percy St. Auburn**  
Project Address  
**13 Percy Street, Auburn, NSW 2144**



Drawing Title:  
**Office Floor Plans**

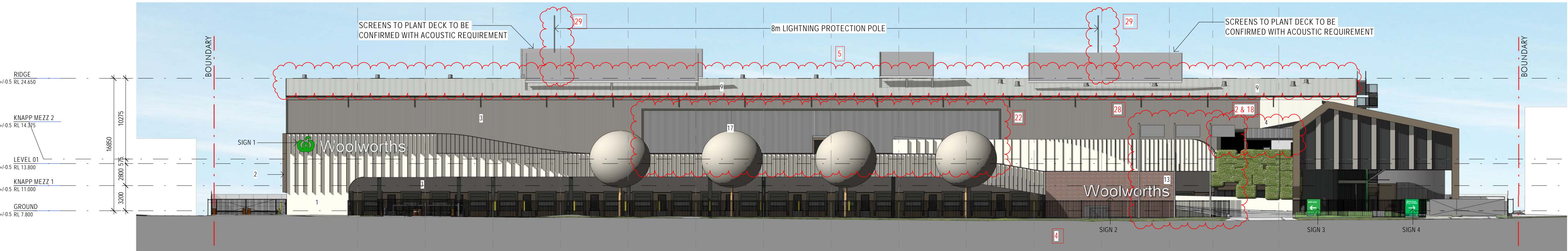
Author: <b>ES</b>	Checker:	Sheet Size: <b>A1</b>	Scale: <b>1:200</b>
Drawing Number: <b>11250_DA015</b>		Issue: <b>C</b>	

**nettletontribe**  
nettleton tribe partnership Pty Ltd ABN 58 161 683 122  
117 Willoughby Road, Crows Nest, NSW 2065  
t +61 2 9431 6431  
e: sydney@nettletontribe.com.au w: nettletontribe.com.au

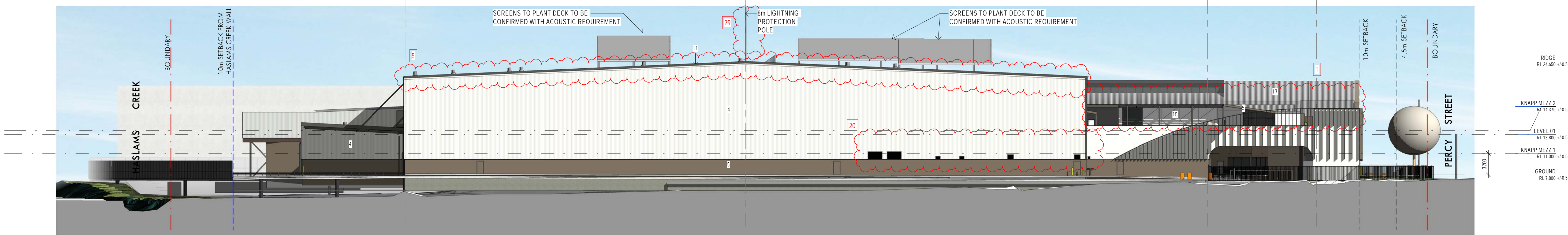


S4.55 - AMENDMENT LIST

1. Carpark layout change due to additional mech.plant rooms & boomgate
2. Extension of roof over L1 office entry
3. Added external egress stair, awning over DTB bays and plant deck
4. Added external egress stair to access mezz. floors and roof
5. Added mech. exhaust & plant on roof & removed translucent roof sheets
6. Inbound dock awning is reduced
7. Added mech & refrigeration plant rooms on rear elevated plant deck, and associated egress stair
8. Added removal of existing concrete channel in demolition
9. Additional DTB store and DTB bays, including changed configuration of DTB bays
10. Office internal layout amended
11. Added landscape area, aluminium screen & gates
12. Southern plant area layout changed as following
  - Minor change to solar and switch room layout
  - Sub & HVC updated
  - Permanent generator reduced to single large gen. Portable gen is added
  - Diesel tank is added for backup generators
  - Armco is added around sub & sprinkler plant area
13. Precast wall is erected higher to support the rear elevated plant deck
14. Maintenance and wash bays are added
15. Added an external stair to inbound dock area
16. Security gates added
17. Boom gates added
18. Minor enlarged L1 office lobby & additional stair next to rec area
19. NOT USED
20. Mech. Louvre added
21. Heavy duty guardrail added to suspended slab edges
22. Replaced transparent wall sheeting to Longline metal cladding
23. Pickup graphic extended
24. CFC sheeting is removed from Office ground elevation
25. NOT USED
26. Outbound Loading dock size & Van parking size increased (TBC)
27. Two mechanical plant rooms on carpark level added
28. Added 3 flag poles
29. Added 2 lightning poles


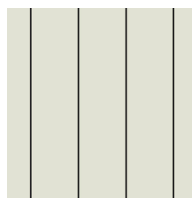
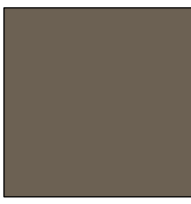

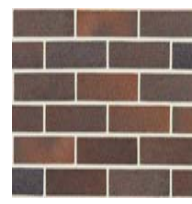

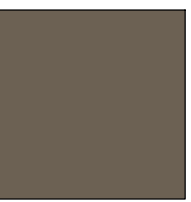
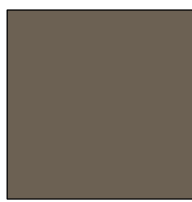
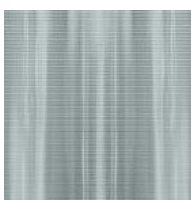

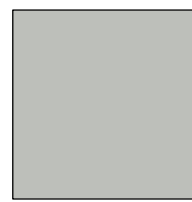

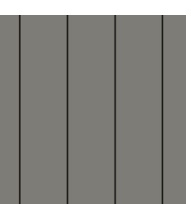
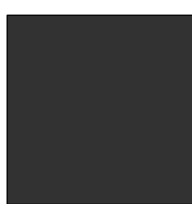
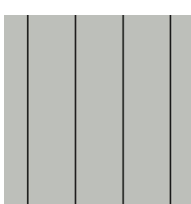
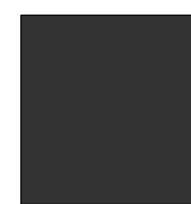
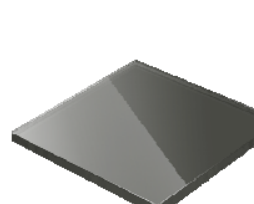



1 NORTHWEST ELEVATION  
1: 300



2 NORTHEAST ELEVATION  
1: 300

EXTERIOR FINISHES SCHEDULE

	1. Nawkaw finished precast concrete panel to match "Surfmist", or similar		4. Metal wall cladding - "Surfmist", or similar		7. Painted egress door - "Jasper", or similar		10. Translucent roof sheets		13. Brick - "Balmerino" blend, or similar		16. CFC with expressed vertical joint - "Territory" Concrete, or similar
	2. Powdercoated aluminium blades & window reveals - "Jasper", or similar		5. Nawkaw finished concrete panel to match "Jasper", or similar		8. Translucent wall cladding		11. Downpipes, fascia & toe mould - "Monument", or similar		14. Powdercoated aluminium window frame - "Shalegrey", or similar		17. Longline profiled metal cladding - Grey, Matt
	3. Metal cladding - "Wallaby", or similar		6. Powdercoated roller shutter doors - "Monument", or similar		9. Metal cladding - "Shalegrey", or similar		12. Painted finish - "Monument", or similar		15. Performance glazing - Grey		18. Powdercoated aluminium sunshade - "Wallaby", or similar

ISSUE FOR S4.55

21/09/2021 11:55:55 AM C:\PROJECTS\LOCAL\2020\1250\_1250\_WOOLWORTHS\_ARCHITECTURAL\_S455\_ahhewm\W023.rvt

Client



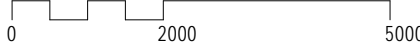
Issue	Description	Date
F	Issue for S4.55	21.09.21
E	Issue for S4.55	03.09.21
D	SSDA UPDATE	06.04.21
C	DRAFT SSDA UPDATE	07.04.21
B	Updated for SSDA	14.12.20
A	Issue for SSDA	01.10.20
P2	Draft DA	18.09.20
P1	Preliminary	15.09.20

Builder and/or subcontractors shall verify all project dimensions before commencing on-site work or off-site fabrication. Figured dimensions shall take precedence over scaled dimensions. This drawing is copyright and cannot be reproduced in whole or in part or by any medium without the written permission of Nettleton Tribe Partnership Pty Ltd.

Builder

Project Name  
**CFC Percy St. Auburn**  
Project Address  
**13 Percy Street, Auburn, NSW 2144**

Key Plan



Drawing Title:  
**Elevations - Sheet 1**

Author:  
**ES**  
Drawing Number:  
**11250\_DA021**

Checker:  
**A1**

Sheet Size:  
**A1**

Scale:  
**1:300**

Issue:  
**F**

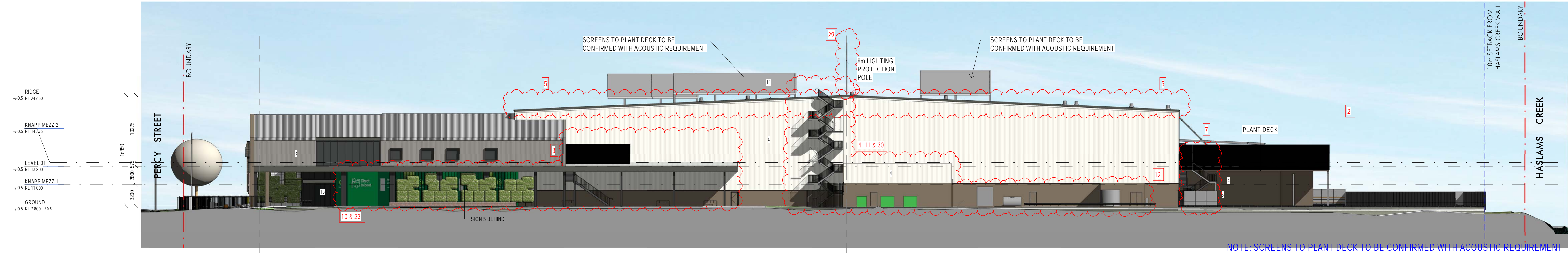
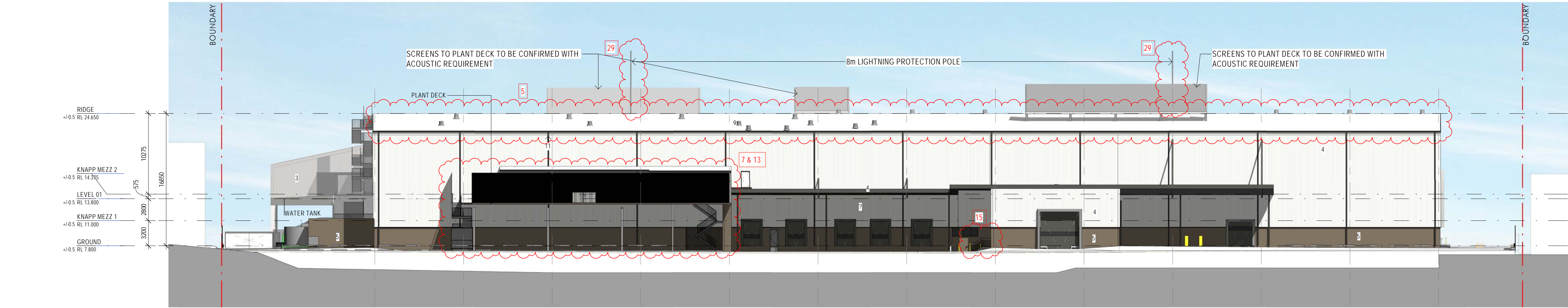
**nettletontribe**

nettleton tribe partnership Pty Ltd ABN 58 161 683 122  
117 Willoughby Road, Crows Nest, NSW 2065  
t +61 2 9431 6431  
e: sydney@nettletontribe.com.au w: nettletontribe.com.au



S4.55 - AMENDMENT LIST

- Carpark layout change due to additional mech.plant rooms & boomgate
- Extension of roof over L1 office entry
- Added external egress stair, awning over DTB bays and plant deck
- Added external egress stair to access mezz. floors and roof
- Added mech. exhaust & plant on roof & removed translucent roof sheets
- Inbound dock awning is reduced
- Added mech & refrigeration plant rooms on rear elevated plant deck, and associated egress stair
- Added removal of existing concrete channel in demolition
- Additional DTB store and DTB bays, including changed configuration of DTB bays
- Office internal layout amended
- Added landscape area, aluminium screen & gates
  - Minor change to solar and switch room layout
  - Sub & HVC updated
  - Permanent generator reduced to single large gen. Portable gen is added
  - Diesel tank is added for backup generators
  - Armco is added around sub & sprinkler plant area
- Precast wall is erected higher to support the rear elevated plant deck
- Maintenance and wash bays are added
- Added an external stair to inbound dock area
- Security gates added
- Boom gates added
- Minor enlarged L1 office lobby & additional stair next to rec area
- NOT USED
- Mech. Louvre added
- Heavy duty guardrail added to suspended slab edges
- Replaced transparent wall sheeting to Longline metal cladding
- Pickup graphic extended
- CFC sheeting is removed from Office ground elevation
- NOT USED
- Outbound Loading dock size & Van parking size increased (TBC)
- Two mechanical plant rooms on carpark level added
- Added 3 flag poles
- Added 2 lightning poles
- Added generator on slab above switch and solar rooms

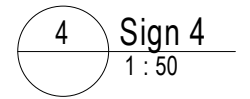


EXTERIOR FINISHES SCHEDULE

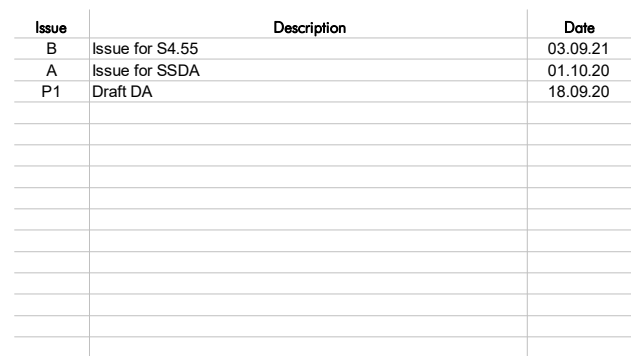

ISSUE FOR S4.55



1. Carpark layout change due to additional mech. plant rooms & boomgate
2. Extension of roof over L1 office entry
3. Added external egress stair, awning over DTB bays and plant deck
4. Added external egress stair to access mezz. floors and roof
5. Added mech. exhaust & plant on roof & removed translucent roof sheets
6. Inbound dock awning is reduced
7. Added mech & refrigeration plant rooms on rear elevated plant deck, and associated egress stair
8. Added removal of existing concrete channel in demolition
9. Additional DTB store and DTB bays, including changed configuration of DTB bays
10. Office internal layout amended
11. Added landscape area, aluminium screen & gates
12. Southern plant area layout changed as following
  - Minor change to solar and switch room layout
  - Sub & HVC updated
  - Permanent generator reduced to single large gen. Portable gen is added
  - Diesel tank is added for backup generators
  - Armco is added around sub & sprinkler plant area
13. Precast wall is erected higher to support the rear elevated plant deck
14. Maintenance and wash bays are added
15. Added an external stair to inbound dock area
16. Security gates added
17. Boom gates added
18. Minor enlarged L1 office lobby & additional stair next to rec area
19. NOT USED
20. Mech. Louvre added
21. Heavy duty guardrail added to suspended slab edges
22. Replaced transparent wall sheeting to Longline metal cladding
23. Pickup graphic extended
24. CFC sheeting is removed from Office ground elevation
25. NOT USED
26. Outbound Loading dock size & Van parking size increased (TBC)
27. Two mechanical plant rooms on carpark level added
28. Added 3 flag poles
29. Added 2 lightning poles



3/09/2021 5:33:13 PM C:\RENT LOCAL 2020\11250\_R20\_WOWPSA\_A\_ARCHITECTURAL\_S455\_ElemSun98LHT.M



Builder and/or subcontractors shall verify all project dimensions before commencing on-site work or off-site fabrication. Figured dimensions shall take precedence over scaled dimensions. This drawing is copyright and cannot be reproduced in whole or in part by any medium without the written permission of Nettleton Tribe Partnership Pty Ltd.

**Builder**

Key Plan

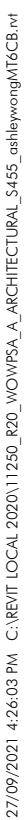
Author: ES      Checker:      Sheet Size: A1      Scale: 1:50

---

Drawing Number: 11250\_DA025      Issue: B

nettleton tribe partnership Pty Ltd ABN 58 161 683 122  
117 Willoughby Road, Crows Nest, NSW 2065  
t +61 2 9431 6431  
e: [sydney@nettletontribe.com.au](mailto:sydney@nettletontribe.com.au) w: [nettletontribe.com.au](http://nettletontribe.com.au)





Woolworths 



Woolworths 



Woolworths 

1. Carpark layout change due to additional mech.plant rooms & boomgate
2. Extension of roof over L1 office entry
3. Added external egress stair, awning over DTB bays and plant deck
4. Added external egress stair to access mezz. floors and roof
5. Added mech. exhaust & plant on roof & removed translucent roof sheets
6. Inbound dock awning is reduced
7. Added mech & refrigeration plant rooms on rear elevated plant deck, and associated egress stair
8. Added removal of existing concrete channel in demolition
9. Additional DTB store and DTB bays, including changed configuration of DTB bays
10. Office internal layout amended
11. Added landscape area, aluminium screen & gates
12. Southern plant area layout changed as following
  - Minor change to switch and control room layout
  - Sub & HVC updated
  - Permanent generator reduced to single large gen. Portable gen is added
  - Diesel tank is added for backup generators
  - Armco is added around sub & sprinkler plant area
13. Precast wall is erected higher to support the rear elevated plant deck
14. Maintenance and wash bays are added
15. Added an external stair to inbound dock area
16. Security gates added
17. Boom gates added
18. Minor enlarged L1 office lobby & additional stair next to rec area
19. NOT USED
20. Mech. Louvre added
21. Heavy duty guardrail added to suspended slab edges
22. Replaced transparent wall sheeting to Longline metal cladding
23. Pickup graphic extended
24. CFC sheeting is removed from Office ground elevation
25. NOT USED
26. Outbound Loading dock size & Van parking size increased (TBC)
27. Two mechanical plant rooms on carpark level added
28. Added 3 flag poles
29. Added 2 lightning poles
30. Added generator on slab above switch and solar rooms

nettletontribe

nettleton tribe partnership Pty Ltd ABN 58 161 683 122  
117 Willoughby Road, Crows Nest, NSW 2065  
t +61 2 9431 6431  
e: [sydney@nettletontribe.com.au](mailto:sydney@nettletontribe.com.au) w: [nettletontribe.com.au](http://nettletontribe.com.au)

Builder and/or subcontractors shall verify all project dimensions before commencing on-site work or off-site fabrication. Figured dimensions shall take precedence over scaled dimensions. This drawing is copyright and cannot be reproduced in whole or in part or by any medium without the written permission of Nettleton Tribe Partnership Pty Ltd.

Project Name  
**CFC Percy St. Auburn**

Project Address  
**13 Percy Street, Auburn, NSW 2144**



Author: ES      Checker:      Sheet Size: A1      Scale: 1:300

---

Drawing Number: **11250 DA031**      Issue: F









nettleton tribe partnership Pty Ltd ABN 58 161 683 122  
117 Willoughby Road, Crows Nest, NSW 2065  
t +61 2 9431 6431  
e: [sydney@nettletontribe.com.au](mailto:sydney@nettletontribe.com.au) w: [nettletontribe.com.au](http://nettletontribe.com.au)

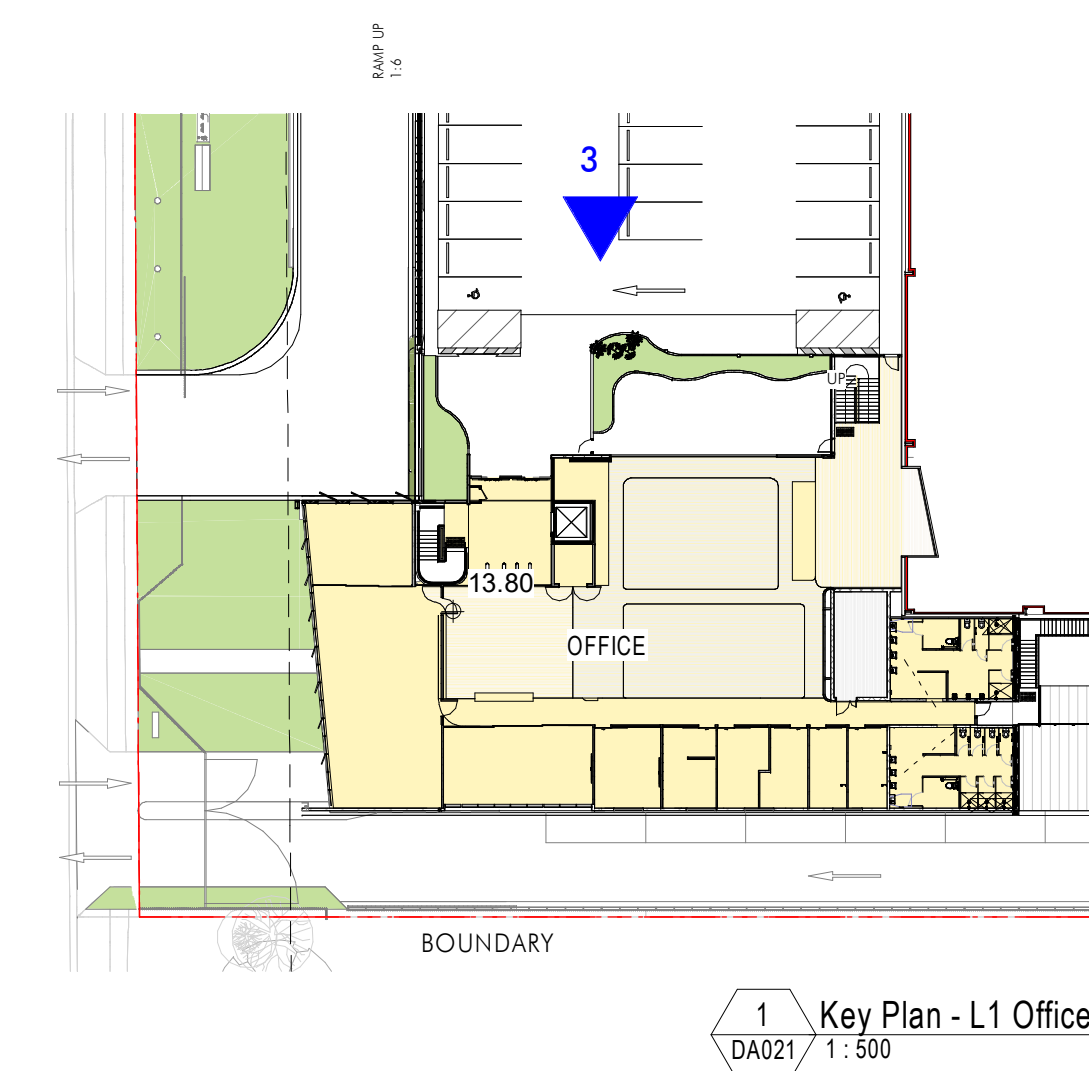




## BIRD VIEW



VIEW 3



**ISSUE FOR \$4.55**

[illegible]

Builder and/or subcontractors shall verify all project dimensions before commencing on-site work or off-site fabrication. Figured dimensions shall take precedence over scaled dimensions. This drawing is copyright and cannot be reproduced in whole or in part by any medium without the written permission of Nettleton Tribe Partnership Pty Ltd.

**Builder**

Project Name  
**CFC Percy St. Auburn**

Project Address  
**13 Percy Street, Auburn, NSW 2144**

## Key Plan



Drawing Title:  
**Perspectives - Sheet 2**

Author: **ES**      Checker:      Sheet Size: **A1**

Drawing Number:  
**11250 DA092**

Scale:  
**1:500**

Issue: **B**

nettleontribe

nettleton tribe partnership Pty Ltd ABN 58 161 683 122  
117 Wolloughby Road, Crows Nest, NSW 2065  
t +61 2 9431 6431  
e: [sydney@nettletontribe.com.au](mailto:sydney@nettletontribe.com.au) w: [nettletontribe.com.au](http://nettletontribe.com.au)