



APPENDIX C - SEDIMENT CONTROL PLAN

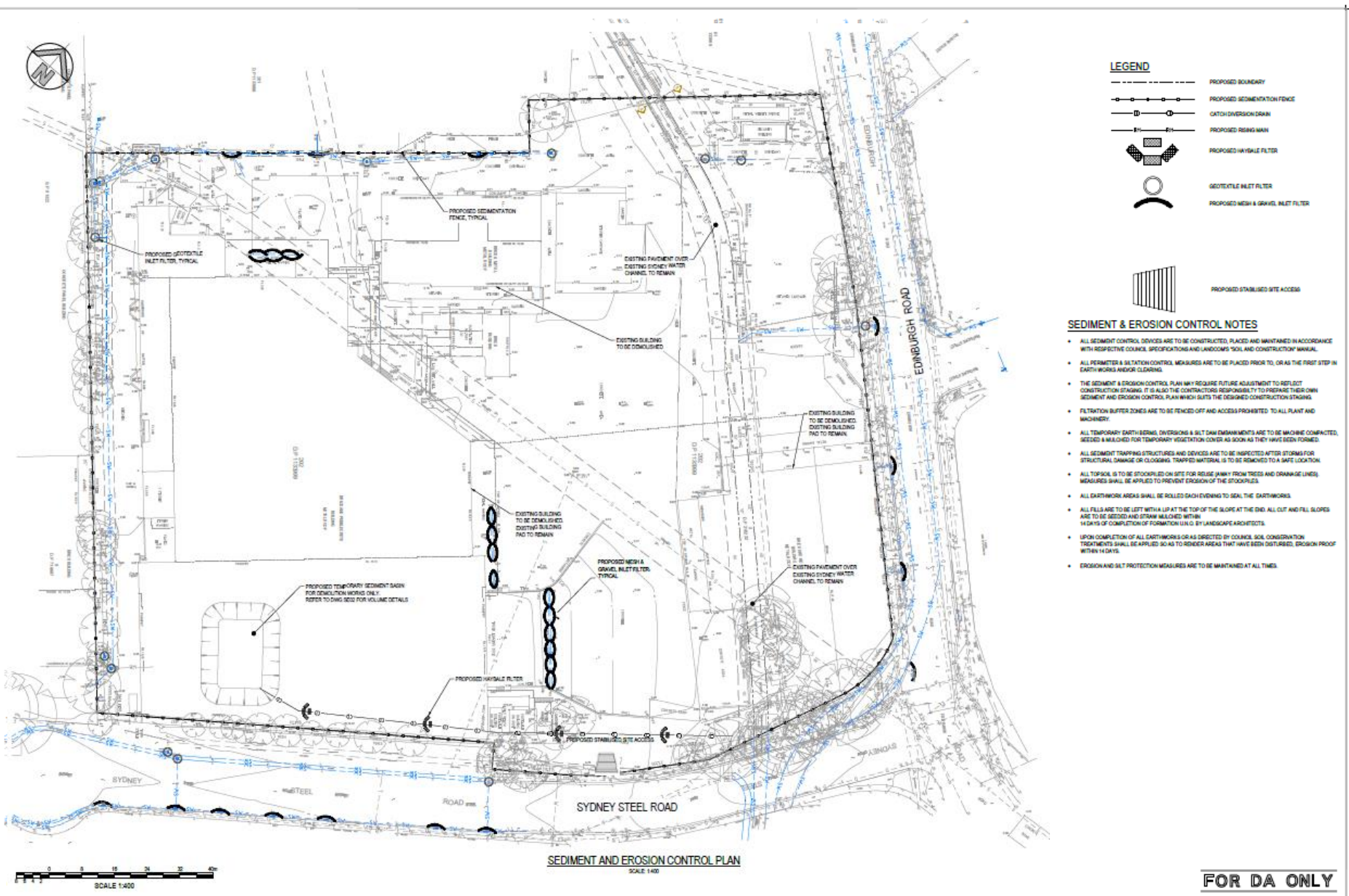
Woolworths Customer Fulfilment Centre, Marrickville

SEDIMENT & EROSION CONTROL NOTES

- ALL SEDIMENT CONTROL DEVICES ARE TO BE CONSTRUCTED, PLACED AND MAINTAINED IN ACCORDANCE WITH RESPECTIVE COUNCIL SPECIFICATIONS AND LANDCOM'S "SOIL AND CONSTRUCTION" MANUAL.
- ALL PERIMETER & SILTATION CONTROL MEASURES ARE TO BE PLACED PRIOR TO, OR AS THE FIRST STEP IN EARTH WORKS AND/OR CLEARING.
- THE SEDIMENT & EROSION CONTROL PLAN MAY REQUIRE FUTURE ADJUSTMENT TO REFLECT CONSTRUCTION STAGING. IT IS ALSO THE CONTRACTORS RESPONSIBILITY TO PREPARE THEIR OWN SEDIMENT AND EROSION CONTROL PLAN WHICH SUITS THE DESIGNED CONSTRUCTION STAGING.
- FILTRATION BUFFER ZONES ARE TO BE FENCED OFF AND ACCESS PROHIBITED TO ALL PLANT AND MACHINERY.
- ALL TEMPORARY EARTH BERMS, DIVERSIONS & SILT DAM EMBANKMENTS ARE TO BE MACHINE COMPACTED, SEEDED & MULCHED FOR TEMPORARY VEGETATION COVER AS SOON AS THEY HAVE BEEN FORMED.
- ALL SEDIMENT TRAPPING STRUCTURES AND DEVICES ARE TO BE INSPECTED AFTER STORMS FOR STRUCTURAL DAMAGE OR CLOGGING. TRAPPED MATERIAL IS TO BE REMOVED TO A SAFE LOCATION.
- ALL TOPSOIL IS TO BE STOCKPILED ON SITE FOR REUSE (AWAY FROM TREES AND DRAINAGE LINES). MEASURES SHALL BE APPLIED TO PREVENT EROSION OF THE STOCKPILES.
- ALL EARTHWORK AREAS SHALL BE ROLLED EACH EVENING TO SEAL THE EARTHWORKS.
- ALL FILLS ARE TO BE LEFT WITH A LIP AT THE TOP OF THE SLOPE AT THE END. ALL CUT AND FILL SLOPES ARE TO BE SEEDED AND STRAW MULCHED WITHIN 14 DAYS OF COMPLETION OF FORMATION U.N.O. BY LANDSCAPE ARCHITECTS.
- UPON COMPLETION OF ALL EARTHWORKS OR AS DIRECTED BY COUNCIL SOIL CONSERVATION TREATMENTS SHALL BE APPLIED SO AS TO RENDER AREAS THAT HAVE BEEN DISTURBED, EROSION PROOF WITHIN 14 DAYS.
- EROSION AND SILT PROTECTION MEASURES ARE TO BE MAINTAINED AT ALL TIMES.

DEMOLITION NOTES:

1. THE DEMOLITION WORK SHALL COMPLY WITH THE PROVISIONS OF AUSTRALIAN STANDARD AS2601: 2001 THE DEMOLITION OF STRUCTURES. AND CARRIED OUT IN ACCORDANCE WITH THE "ATTACHMENT 19 HAZARDOUS MATERIAL SURVEY" DOCUMENT.
2. THE DEMOLITION WORK PLANS REQUIRED BY AS2601: 2001 SHALL BE ACCOMPANIED BY A WRITTEN STATEMENT FROM A SUITABLY QUALIFIED PERSON THAT THE PROPOSAL CONTAINED IN THE WORK PLAN COMPLY WITH THE SAFETY REQUIREMENTS OF THE STANDARD. THE WORK PLAN SHALL BE PREPARED IN ACCORDANCE WITH THE REQUIREMENTS OF CONDITION 87 OF DEVELOPMENT CONSENT DA/974/2010.
3. THE WORK PLAN AND THE STATEMENT OF COMPLIANCE SHALL BE SUBMITTED TO THE SATISFACTION OF THE PRINCIPAL CERTIFYING AUTHORITY PRIOR TO THE COMMENCEMENT OF ANY WORKS.
4. HAZARDOUS OR INTRACTABLE WASTES ARISING FROM THE DEMOLITION, EXCAVATION AND REMEDIATION PROCESS SHALL BE REMOVED AND DISPOSED OF IN ACCORDANCE WITH THE REQUIREMENTS OF WORKCOVER NSW AND THE ENVIRONMENT PROTECTION AUTHORITY.
5. ALL DEMOLITION WORKS SHALL BE UNDERTAKEN IN ACCORDANCE WITH THE APPROVED DILAPIDATION REPORT.
6. ALL DEMOLITION WORKS TO BE UNDERTAKEN IN ACCORDANCE WITH THE APPROVED "CONSTRUCTION NOISE & VIBRATION MANAGEMENT PLAN" AND "CONSTRUCTION SITE MANAGEMENT PLAN."
7. HAZARDOUS MATERIALS MUST BE REMOVED IN ACCORDANCE WITH CONDITIONS 97-100 OF DEVELOPMENT CONSENT DA/974/2010.
8. DEMOLITION WORKS MUST BE CONDUCTION BETWEEN THE TIMES NOMINATED IN CONDITION 94 OF DEVELOPMENT CONSENT DA/974/2010.
9. THREE PROTECTION FENCING TO BE INSTALLED PRIOR TO CONSTRUCTION IN ACCORDANCE WITH APPENDIX E OF ARBORICULTURAL IMPACT ASSESSMENT BY REDGUM HORTICULTURAL AND IN ACCORDANCE WITH CONDITION 150 OF DEVELOPMENT CONSENT DA/974/2010.
10. TRAFFIC CONTROL PLAN TO BE PREPARED BY CONTRACTOR PRIOR TO CONSTRUCTION. THIS SHALL INCLUDE AN ASSESSMENT OF TRAFFIC MOVEMENTS AND SITE ACCESS REQUIREMENTS.



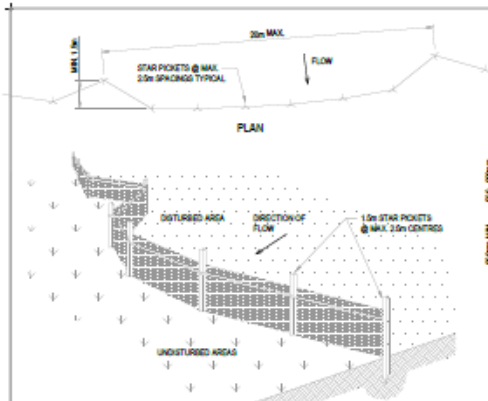
- LEGEND**
- PROPOSED BOUNDARY
 - PROPOSED SEDIMENTATION FENCE
 - CATCH OVERFLOW DRAIN
 - PROPOSED SILT TRAP
 - PROPOSED HAYBALE FILTER
 - GEOTEXTILE BALET FILTER
 - PROPOSED MESH & GRAVEL BALET FILTER
 - PROPOSED STABILISED SITE ACCESS

- SEDIMENT & EROSION CONTROL NOTES**
- ALL SEDIMENT CONTROL DEVICES ARE TO BE CONSTRUCTED, PLACED & MAINTAINED IN ACCORDANCE WITH RESPECTIVE COUNCIL SPECIFICATIONS AND LANDCOMPS 'SOIL AND CONSTRUCTION' MANUAL.
 - ALL PERIMETER & SITUATION CONTROL MEASURES ARE TO BE PLACED PRIOR TO, OR AS THE FIRST STEP IN, EARTHWORKS AND/OR CLEARING.
 - THE SEDIMENT & EROSION CONTROL PLAN MAY REQUIRE FUTURE ADJUSTMENT TO REFLECT CONSTRUCTION STAGING. IT IS ALSO THE CONTRACTORS RESPONSIBILITY TO PREPARE THEIR OWN SEDIMENT AND EROSION CONTROL PLAN WHICH SUITS THE DESIGNED CONSTRUCTION STAGING.
 - FILTRATION BUFFER ZONES ARE TO BE FENCED OFF AND ACCESS PROHIBITED TO ALL PLANT AND MACHINERY.
 - ALL TEMPORARY EARTHWORKS, DIVERSIONS & SILT DAM EMBANKMENTS ARE TO BE MACHINE COMPACTED, SEEDED & MULCHED FOR TEMPORARY VEGETATION COVER AS SOON AS THEY HAVE BEEN FORMED.
 - ALL SEDIMENT TRAPPING STRUCTURES AND DEVICES ARE TO BE INSPECTED AFTER STORMS FOR STRUCTURAL DAMAGE OR CLOGGING. TRAPPED MATERIAL IS TO BE REMOVED TO A SAFE LOCATION.
 - ALL TOPSOIL IS TO BE STOCKPILED ON SITE FOR REUSE AWAY FROM STEES AND DRAINAGE LINES. MEASURES SHALL BE APPLIED TO PREVENT EROSION OF THE STOCKPILES.
 - ALL EARTHWORK AREAS SHALL BE ROLLED EACH EVENING TO SEAL THE EARTHWORKS.
 - ALL FILLS ARE TO BE LET WITH A LIP AT THE TOP OF THE SLOPE AT THE END. ALL CUT AND FILL SLOPES ARE TO BE SEEDED AND STRAW MULCHED WITHIN 14 DAYS OF COMPLETION OF FORMATION L.I.N.G. BY LANDSCAPE ARCHITECTS.
 - UPON COMPLETION OF ALL EARTHWORKS OR AS DIRECTED BY COUNCIL, SOIL CONSOLIDATION TREATMENTS SHALL BE APPLIED SO AS TO REDUCE AREAS THAT HAVE BEEN DISTURBED. EROSION PROOF WITHIN 14 DAYS.
 - EROSION AND SALT PROTECTION MEASURES ARE TO BE MAINTAINED AT ALL TIMES.

SEDIMENT AND EROSION CONTROL PLAN
SCALE 1:400

FOR DA ONLY

SURVEY INFORMATION SURVEYED BY: [] DATE OF FIELD: []				WOOLWORTHS [] NETTLETONTRIBE []				Scale 1:400 74 EDINBURGH ROAD, MARRICKVILLE, NSW CIVIL DEMOLITION AND TEMPORARY WORKS SEDIMENT AND EROSION CONTROL PLAN				21K78_DA_SE01 03			
[] [] []				[] [] []				[] [] []				[] [] []			



SEDIMENT FENCE
SCALE N.T.S.

SEDIMENT FENCE CONSTRUCTION NOTES:

- CONSTRUCT SEDIMENT FENCES AS CLOSE AS POSSIBLE TO THE CONTOURS OF THE SITE, BUT WITH SMALL RETURNS AS SHOWN IN THE DRAWING TO LIMIT THE CATCHMENT AREA OF ANY ONE SECTION. THE CATCHMENT AREA SHOULD BE SMALL ENOUGH TO LIMIT WATER FLOW TO CONCENTRATED AT ONE POINT TO SLUICES PER SECOND IN THE DESIGN STORM EVENT, USUALLY THE 10-YEAR EVENT.
- CUT A 150mm DEEP TRENCH ALONG THE UPSLOPE LINE OF THE FENCE FOR THE BOTTOM OF THE FABRIC TO BE ENTRENCHED.
- DRIVE 1.5m LONG STAR PICKETS INTO GROUND @ 25m INTERVALS (MAX) AT THE DOWN-SLOPE EDGE OF THE TRENCH. ENSURE ANY STAR PICKETS ARE FITTED WITH SAFETY CAPS.
- FIX SELF-SUPPORTING GEOTEXTILE TO THE UPSLOPE SIDE OF THE POSTS ENSURING IT GOES TO THE BASE OF THE TRENCH. FIX THE GEOTEXTILE WITH WIRE TIES OR AS RECOMMENDED BY THE MANUFACTURER. ONLY USE GEOTEXTILES SPECIFICALLY PRODUCED FOR SEDIMENT FENCING. THE USE OF SHAGGY CLOTH FOR THIS PURPOSE IS NOT SATISFACTORY.
- JOIN SECTIONS OF FABRIC AT A SUPPORT POST WITH A 150mm OVERLAP. BACKFILL THE TRENCH OVER THE BASE OF THE FABRIC AND COMPACT IT THOROUGHLY OVER THE GEOTEXTILE.

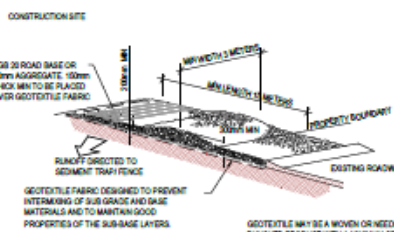


STOCKPILES
SCALE N.T.S.

STOCKPILE CONSTRUCTION NOTES:

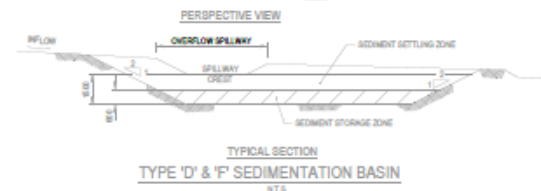
- PLACE STOCKPILES MORE THAN 1 (PREFERABLY 2) METRES FROM EXISTING VEGETATION, CONCENTRATED WATER FLOW, ROADS AND HARDENED AREAS.
- CONSTRUCT ON THE CONTOUR AS LOW FLAT, ELONGATED MOUND.
- WHERE THERE IS SUFFICIENT AREA, TOPSOIL STOCKPILES SHALL BE LESS THAN 2 METRES IN HEIGHT.
- WHERE THEY ARE TO BE PLACED FOR MORE THAN 10 DAYS, STABILISE FOLLOWING THE APPROVED E.A.C.F. OR S.M.M.P. TO REDUCE THE C.FACTOR TO LESS THAN 0.15.
- CONSTRUCT EARTH BANKS ON THE UPSLOPE SIDE TO DIRECT WATER AROUND STOCKPILES AND SEDIMENT FENCES 1 TO 2 METRES DOWN-SLOPE.

STABILISED SITE ACCESS WITH SHAKER RAMP
SCALE N.T.S.



STABILISED SITE ACCESS WITH SHAKER RAMP
SCALE N.T.S.

- NOTES:**
- THIS DEVICE IS TO BE LOCATED AT ALL EXITS FROM CONSTRUCTION SITE.
 - THIS DEVICE IS TO BE REGULARLY CLEANED OF DEPOSITED MATERIAL SO AS TO MAINTAIN A 50mm DEEP SPACE BETWEEN PLANKS.
 - ANY UNGRADED ROAD BETWEEN THIS DEVICE AND NEAREST ROADWAY IS TO BE STOPPED WITH 150mm THICK 40-70mm SIZE AGGREGATE.
 - ALTERNATIVELY, THREE PRECAST CONCRETE CATTLE GROS (AS MANUFACTURED BY 'RAMES CONCRETE' MAY BE USED. 1, 2 & 3 ABOVE ALSO APPLY.



SEDIMENTATION BASIN CALCULATIONS: (FOR TYPE D & F SOILS) - PER 1 ha
SCALE N.T.S.

SEDIMENT BASIN SIZING

- THE SEDIMENT BASIN SHALL BE CONSTRUCTED ON A DATE PER HECTARE BASIS AND HAS BEEN IN ACCORDANCE WITH THE REQUIREMENTS OF THE LANDCOM MANUAL 'MANAGING URBAN STORMWATER - SOILS AND CONSTRUCTION'. FOR SEDIMENTATION TYPE D SOILS, THE DISTURBED AREA WITHIN THIS CATCHMENT AT ANY ONE TIME SHOULD BE LIMITED TO AN AREA FOR WHICH EACH SEDIMENT BASIN CAN HANDLE. EACH BASIN SHALL BE SIZED IN ACCORDANCE WITH THE TABLE BELOW.

SEDIMENT BASIN SIZING TYPE D SOILS	
VOLUMETRIC RUNOFF COEFFICIENT, CV	0.8 (APPENDIX F - TABLE F2)
75TH PERCENTILE 5 DAY TOTAL ANNUAL DEPTH, R	36.8mm
CATCHMENT AREA, A	1.16 (UNIT AREA)
SETTLING ZONE VOLUME (PER HECTARE) 10 CV x R	267.7m ³
DISTURBED-CATCHMENT AREA	1.16 (UNIT AREA)
R.K.L.S P.C	46.50m ³
SEDIMENT ZONE VOLUME (2.17 x R x L.S.P.C)/3	0.36m ³ x 100% SETTLING VOL
TOTAL SEDIMENT BASIN VOLUME REQUIRED:	40.15m ³

*LANDCOM MANAGING URBAN STORMWATER MANUAL (REFERENCED)

- THE FOLLOWING DESIGN PARAMETERS HAVE BEEN ASSIGNED FOR THE SITE:

CONSTRAINT	VALUE	(SOURCE)
RAINFALL EXCESSITY (R-FACTOR)	300	APPENDIX B
LENGTHSLOPE GRADIENT FACTOR, L/S	0.25	APPENDIX A - TABLE A1
SOIL ERODIBILITY (K-FACTOR)	0.08	TABLE C09
EROSION CONTROL PRACTICE FACTOR (P-FACTOR)	1.3 (COMPACTED)	APPENDIX A - TABLE A3
COVER FACTOR (C-FACTOR)	1.0 (DURING EARTHWORKS)	APPENDIX A - TABLE A5
CALCULATED SOIL LOSS, A (PURE EQUATION)	46.50t/ha/yr	A = R x L/S x P.C
SOIL HYDROLOGIC GROUP	GROUP B	APPENDIX C TABLE 20
SEDIMENT TYPE	TYPE D	APPENDIX C TABLE 4
75TH PERCENTILE 5-DAY RAINFALL EVENT	36.8mm	TABLE 6.5A

*LANDCOM MANAGING URBAN STORMWATER MANUAL (REFERENCED)

Basin Management

- THE CAPTURED STORMWATER IN THE SETTLING ZONE SHOULD BE DRAINED TO MEET THE MINIMUM STORAGE CAPACITY REQUIRED WITHIN A FIVE (5) DAY PERIOD FOLLOWING RAINFALL, PROVIDED THE ACCEPTABLE WATER QUALITY (WQ) AND TURBIDITY HAVE BEEN ACHIEVED.
- CHEMICAL FLOCCULANT SUCH AS CHYPRIM MAY BE DOSED TO AID SETTLING WITHIN 24 HOURS OF COMPLETION OF EACH STORM. THE APPLIED DOSING RATES SHOULD ACHIEVE THE TARGET QUALITY WITHIN 36 TO 72 HOURS OF THE STORM EVENT.
- INSPECT THE SEDIMENT BASINS AFTER EACH RAINFALL EVENT AND/OR WEEKLY. ENSURE THAT ALL SEDIMENT IS REMOVED ONCE THE SEDIMENT STORAGE ZONE IS FULL. PREFER TO PRE-INSTALL IN BAGS IN ACCORDANCE WITH THE S.M.M.P. ENSURE THAT OUTLET AND EMERGENCY SPILLWAY WORKS ARE MAINTAINED IN A FULLY OPERATIONAL CONDITION AT ALL TIMES.

SOWING SEASON	SEED MIX
AUTUMN/WINTER	OKT@40% + JAPANESE MILLET@30%
SPRING/SUMMER	OKT@30% + JAPANESE MILLET@30%

NOTE: THESE PLANT SPECIES ARE FOR TEMPORARY REVEGETATION ONLY. THEY WILL ONLY PROVIDE PROTECTION FROM EROSION FOR 6-12 MONTHS. WHERE THE LOTS ARE TO BE LEFT UNDEVELOPED FOR A LONGER PERIOD, THE CONTRACTOR SHALL SEEK ADVICE FROM THE SITE SUPERINTENDENT AS TO MORE APPROPRIATE REVEGETATION METHODS.

REVEGETATION IN ACCORDANCE WITH THE ABOVE TABLE WILL BE ENHANCED BY ADDING LIME AT A RATE OF 4g/tonne OF TOPSOIL AND 7g/tonne OF SUBSOIL.

- THE LONG TERM GROUND COVER FACTORS FOR THE CONSTRUCTION WORKS IS NOT TO EXCEED THE FOLLOWING LIMITS:

LAND	MAXIMUM C-FACTOR	REMARKS
WATERWAYS AND OTHER AREAS OF CONCENTRATED FLOWS, POST CONSTRUCTION	0.05	APPLIES AFTER TEN WORKING DAYS OF COMPLETION OF FORMATION AND BEFORE CONCENTRATED FLOWS ARE APPLIED. FOOT AND VEHICULAR TRAFFIC IS PROHIBITED IN THIS AREA AND 70% GROUND COVER IS REQUIRED.
STOCKPILES, POST CONSTRUCTION	0.10	APPLIES AFTER TEN WORKING DAYS FROM COMPLETION OF FORMATION. 80% GROUND COVER IS REQUIRED.
ALL LANDS, INCLUDING WATERWAYS AND STOCKPILES, DURING CONSTRUCTION	0.15	APPLIES AFTER 20 DAYS OF INACTIVITY, EVEN THOUGH WORKS MAY BE INCOMPLETE. 50% GROUND COVER IS REQUIRED.

FOR DA ONLY

MESH & GRAVEL INLET FILTER
SCALE N.T.S.

CONSTRUCTION NOTES:

- FABRICATE A SLEEVE MADE FROM GEOTEXTILE OR WIRE MESH LONGER THAN THE LENGTH OF THE INLET PIT AND FULL IT WITH 20mm TO 30mm GRAVEL.
- FORM AN ELLIPTICAL CROSS-SECTION ABOUT 100mm HIGHLY 400mm WIDE.
- PLACE THE FILTER AT THE OPENING LEAVING AT LEAST A 100mm SPACE BETWEEN IT AND THE KERB INLET. MAINTAIN THE OPENING WITH SPACER BLOCKS.
- FORM A SEAL WITH THE KERB TO PREVENT SEDIMENT BYPASSING THE FILTER.
- SANDBAGS FILLED WITH GRAVEL CAN SUBSTITUTE FOR THE MESH OR GEOTEXTILE PROVIDING THEY ARE PLACED SO THAT THEY CAN FIRMLY ABUT EACH OTHER AND SEDIMENT LADEN WATERWAYS CANNOT PASS BETWEEN.

GEOTEXTILE INLET FILTER
SCALE N.T.S.

CONSTRUCTION NOTES:

- FABRICATE A SEDIMENT BARRIER MADE FROM GEOTEXTILE.
- PICKET SPACING TO BE MAXIMUM 1.0m.
- IN WATERWAYS, ADDITIONAL SAG POINTS CAN BE CREATED WITH SANDBAGS OR EARTH BANKS AS SHOWN IN THE DRAWING.
- DO NOT COVER THE INLET WITH GEOTEXTILES UNLESS THE DESIGN IS ADEQUATE TO ALLOW FOR ALL WATERS TO BYPASS IT.

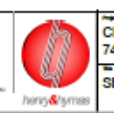
CATCH DRAINS SD 8
SCALE N.T.S.

CONSTRUCTION NOTES:

- CONSTRUCT ALONG GRADIENT AS SPECIFIED.
- MAXIMUM SPACING BETWEEN DRAINS SHALL BE 80 METRES.
- DRAINS TO BE OF PARABOLIC OR TRAPEZOIDAL CROSS SECTION NOT W-SHAPED.
- EARTH BANKS TO BE ADEQUATELY COMPACTED IN ORDER TO PREVENT FAILURE.
- CONSTRUCTION IS OF A TEMPORARY NATURE AND SHALL BE COMPACTED AT THE END OF DAYS WORK OR IMMEDIATELY FROM RAIN.
- ALL OUTLETS FROM DISTURBED LANDS ARE TO FEED INTO SEDIMENT BASIN OR SIMILAR.
- DISCHARGE RUNOFF COLLECTED FROM UNDISTURBED LANDS ONTO EITHER A STABILISED OR AN UNDISTURBED DISPOSAL AREA WITHIN THE SAME SUBCATCHMENT AREA FROM WHICH THE WATER ORIGINATED.
- COMPACT WITH A SUITABLE IMPLEMENT IN SITUATIONS WHERE THEY ARE REQUIRED TO FUNCTION FOR MORE THAN FIVE DAYS.
- EARTH BANKS TO BE FREE OF PROJECTIONS OR OTHER IRREGULARITIES THAT WILL IMPIDE NORMAL FLOW.

<p>SURVEY INFORMATION</p> <p>SURVEYED BY: _____</p> <p>DATE: _____</p> <p>ORIGIN OF FILE: _____</p>		<p>Client: WOOLWORTHS</p> <p>Project: NETTLETONTRIBE</p> <p>Location: _____</p>	<p>Scale: 1:100</p> <p>Revision: _____</p>	<p>Drawn: _____</p> <p>Checked: _____</p> <p>Approved: _____</p>	<p>Project: CIVIL DEMOLITION AND TEMPORARY WORKS</p> <p>Location: 74 EDINBURGH ROAD, MARRICKVILLE, NSW</p> <p>Project No: 21K78_DA_SE02</p>
--	--	---	--	--	--

This drawing and design remain the property of Henry & Symes and may only be used in whole or in part without the prior written approval of Henry & Symes.



21K78_DA_SE02 02