

B

Additional Detailed Dwelling Assessments
(Public Exhibition)

B1. Dwelling Assessment Dwelling 284

DWELLING 284			
Nearest proposed turbine (km):	3.91 km	Visibility Distance Zone:	Near Middleground (NM)
Number of proposed turbines within Black & Blue Lines (3350 - 4950 m):	10	Viewer Sensitivity Zone:	Level 2: Moderate (Rural Dwelling)
Number of theoretical 60° Sectors (Based on 2D Plan):	1	Landscape Character Unit:	LCU03: Alluvial Plains
Number of visible 60° Sectors (Based on 3D Assessment):	1	Scenic Quality Rating:	Low
Number of potentially visible turbines (Based on topography alone)	70 20 at tip 50 at hub	Visual Influence Zone:	VIZ2

Visual Impact Rating: Low

Assessment Notes:

The dwelling is located on relatively flat terrain and is accessed via Tongy Road. Aerial imagery indicates that an existing farm building and vegetation are located on the north west / west of the dwelling. Moir LA visited the dwelling in January 2023 to identify existing conditions and prepare a photomontage to identify potential visual impacts. Existing vegetation and the farm building in the north west / west will help to limit views toward majority of the Project. However, it is likely that up to 10 turbines and two (2) blade tips will be visible. There are no turbines within the black line of visual magnitude and 10 within the black and blue lines of this dwelling.

Visual Impact Summary:

The turbines will be visible in one (1) 60 degree sector however turbines to the north west will be predominantly screened by existing vegetation and built form. Views to the west towards turbines located approx 3.9 km away are open and, subsequently, the turbines will be a noticeable element in the view for this dwelling. The scenic quality rating of the landscape is LOW. It has been determined that the Visual Impact Rating for this dwelling is LOW.

Visual Performance Objectives Evaluation (VIZ2):

Visual Magnitude: 10 turbines are located between the black & blue lines of visual magnitude.

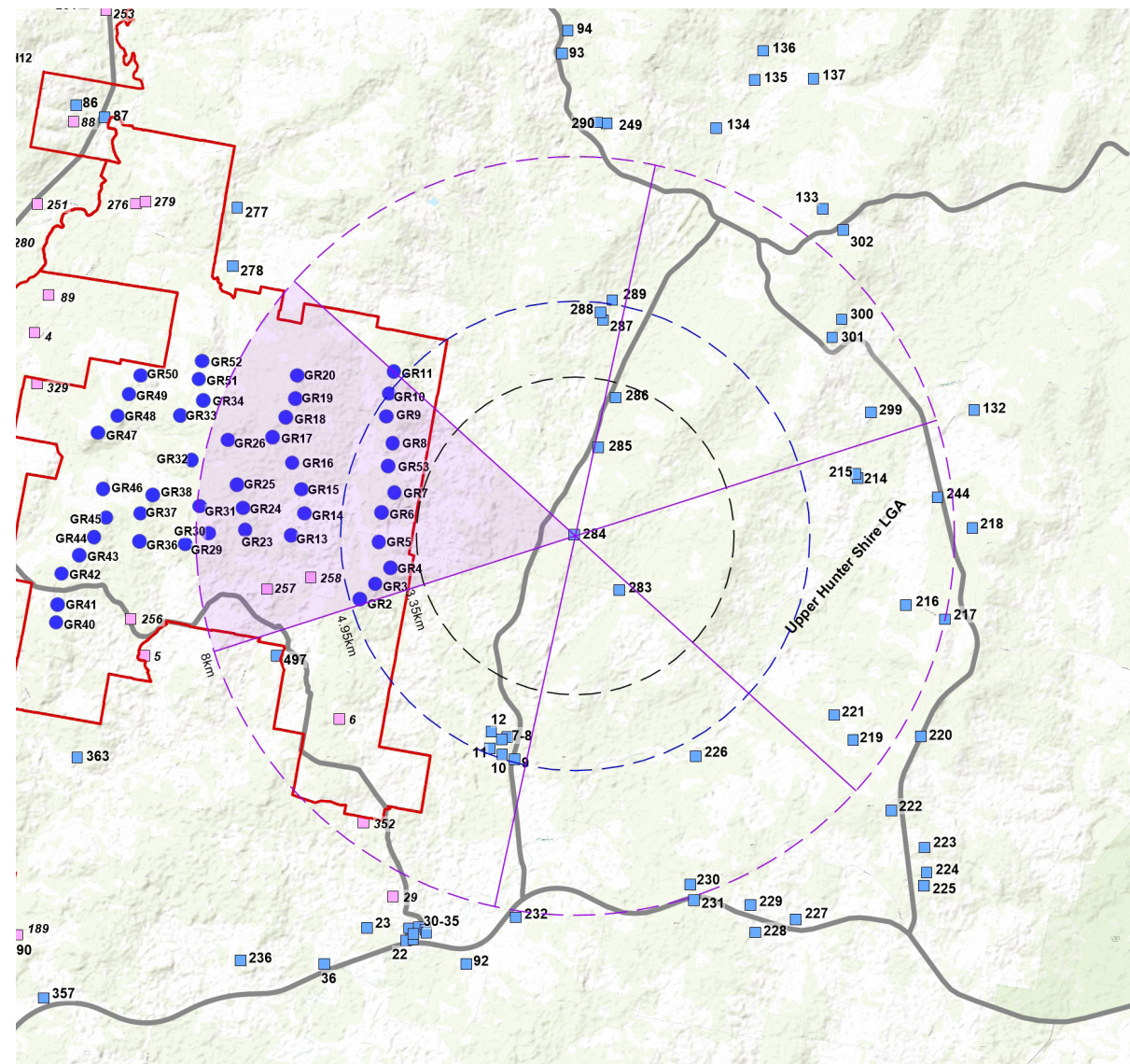
Multiple Wind Turbine Effect: Turbines have the potential to be visible in up to one (1) 60 degree sector. However, existing vegetation and farm buildings will assist in screening views towards the north west.

Landscape Scenic Integrity: The Project will have a low impact on scenic integrity at this location. The proposed turbines have the potential to be a noticeable element in the western direction.

Key Feature Disruption: Key features visible from the dwelling include the ridgeline to the north. The Project is likely to be visible in the west. Views to key landscape features are not likely to be impacted by the Project.

Mitigation Measures:

Screening of the project is achievable. Tree planting along the fenceline to the west of the dwelling would potentially reduce the Visual Impact Rating to NEGLIGIBLE. Consultation with the landowner would be required to discuss appropriate mitigation options.

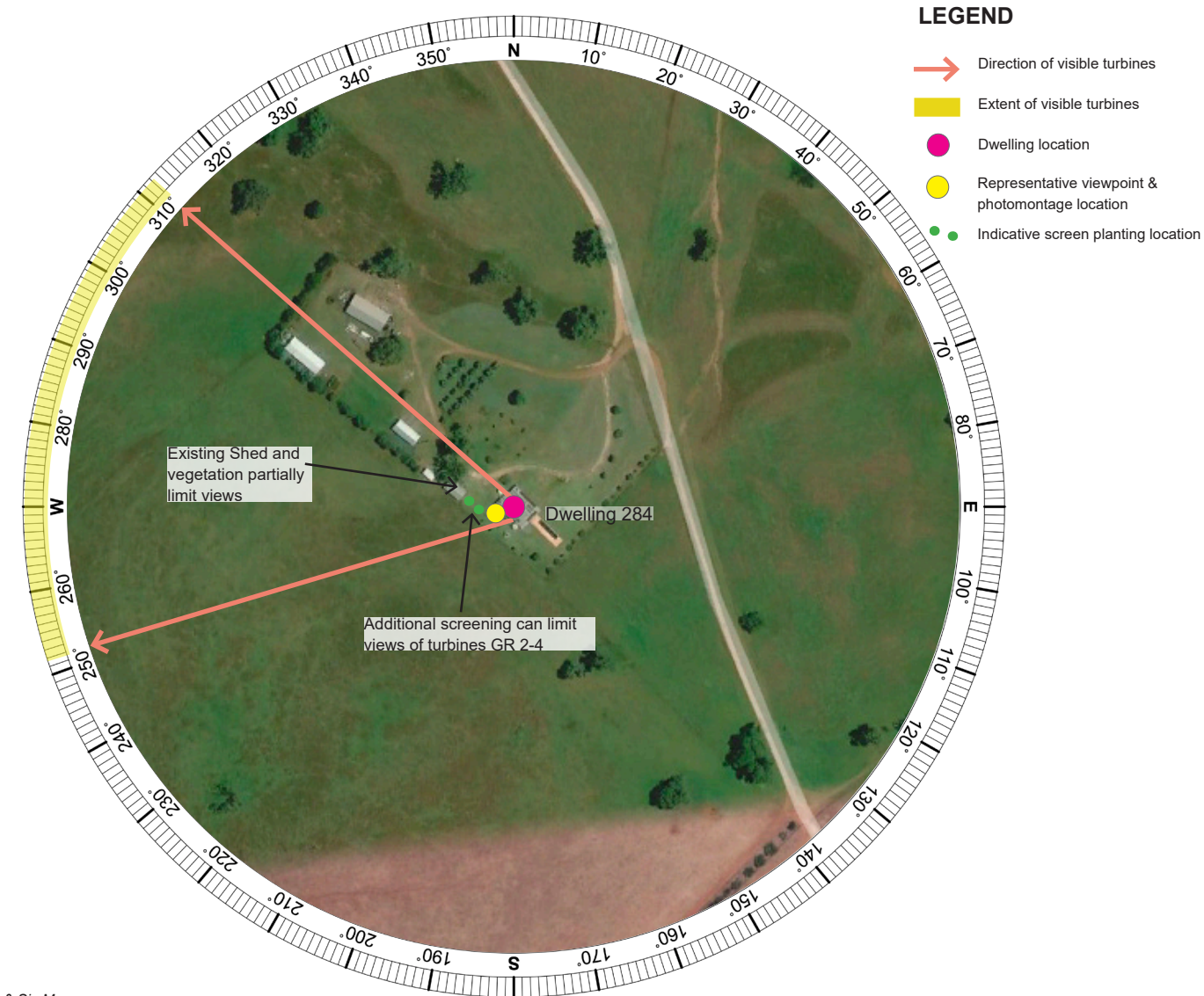


LEGEND

- Proposed turbine location
- Non-involved Dwelling
- 3,350 m from nearest turbine (Black Line)
- 4,950 m from nearest turbine (Blue Line)
- 8,000 m from nearest turbine
- 60° sector
- 60° sector with turbine



Aerial image sources: ESRI Topographic Maps & Six Maps

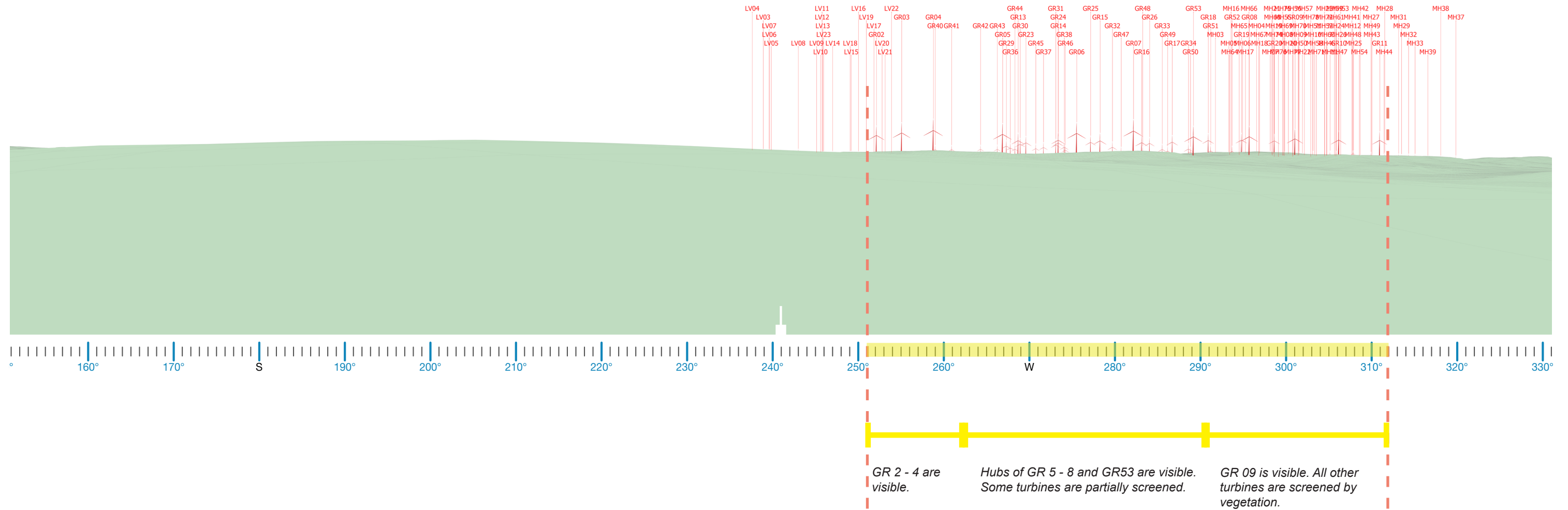


LEGEND

- Direction of visible turbines
- Extent of visible turbines
- Dwelling location
- Representative viewpoint & photomontage location
- Indicative screen planting location

B1. Dwelling Assessment Dwelling 284

Wire Frame Diagram - 180 degree field of view



* Note: Photograph and photomontage have been removed from the assessment due to request for non-disclosure.

B2. Dwelling Assessment Dwelling 91

DWELLING 91			
Nearest proposed turbine (km):	2.76 km	Visibility Distance Zone:	Near Middleground (NM)
Number of proposed turbines within Black Line (3350 m):	3	Viewer Sensitivity Zone:	Level 2: Moderate (Rural Dwelling)
Number of theoretical 60° Sectors (Based on 2D Plan):	3	Landscape Character Unit:	LCU04: Agricultural Flats
Number of visible 60° Sectors (Based on 3D Assessment):	3	Scenic Quality Rating:	Low
Number of potentially visible turbines (Based on topography alone)	87 turbines (11 at tip 76 at hub)	Visual Influence Zone:	VIZ2

Visual Impact Rating: Moderate

Assessment Notes:

The dwelling is accessed off Black Stump Way and is located near the centre of the Project Area. Access to dwelling was not permitted. Aerial imagery shows that the dwelling is surrounded by dense vegetation to the east and south. A wire frame diagram has been prepared to identify the potential visual impacts. It is likely that LV cluster will not be discernible due to the distance of the cluster from the dwelling. It is likely that GR cluster will be partially visible but majority of the cluster will be screened by existing vegetation located on the south eastern side of the dwelling.

Visual Impact Summary:

The turbines will be visible in three (3) 60 degree sectors as per 2D assessment. Majority of the turbines are likely to be screened by existing vegetation to the east and south. Views of some turbines associated with the MH cluster, however, are likely to be available in the north due to gaps in existing vegetation. The scenic quality rating of the landscape is LOW. It has been determined that the Visual Impact Rating for this dwelling is MODERATE.

Visual Performance Objectives Evaluation (VIZ2):

Visual Magnitude: Three (3) turbines are located within the black line of visual magnitude. Nine (9) turbines are located between the black and blue lines of visual magnitude.

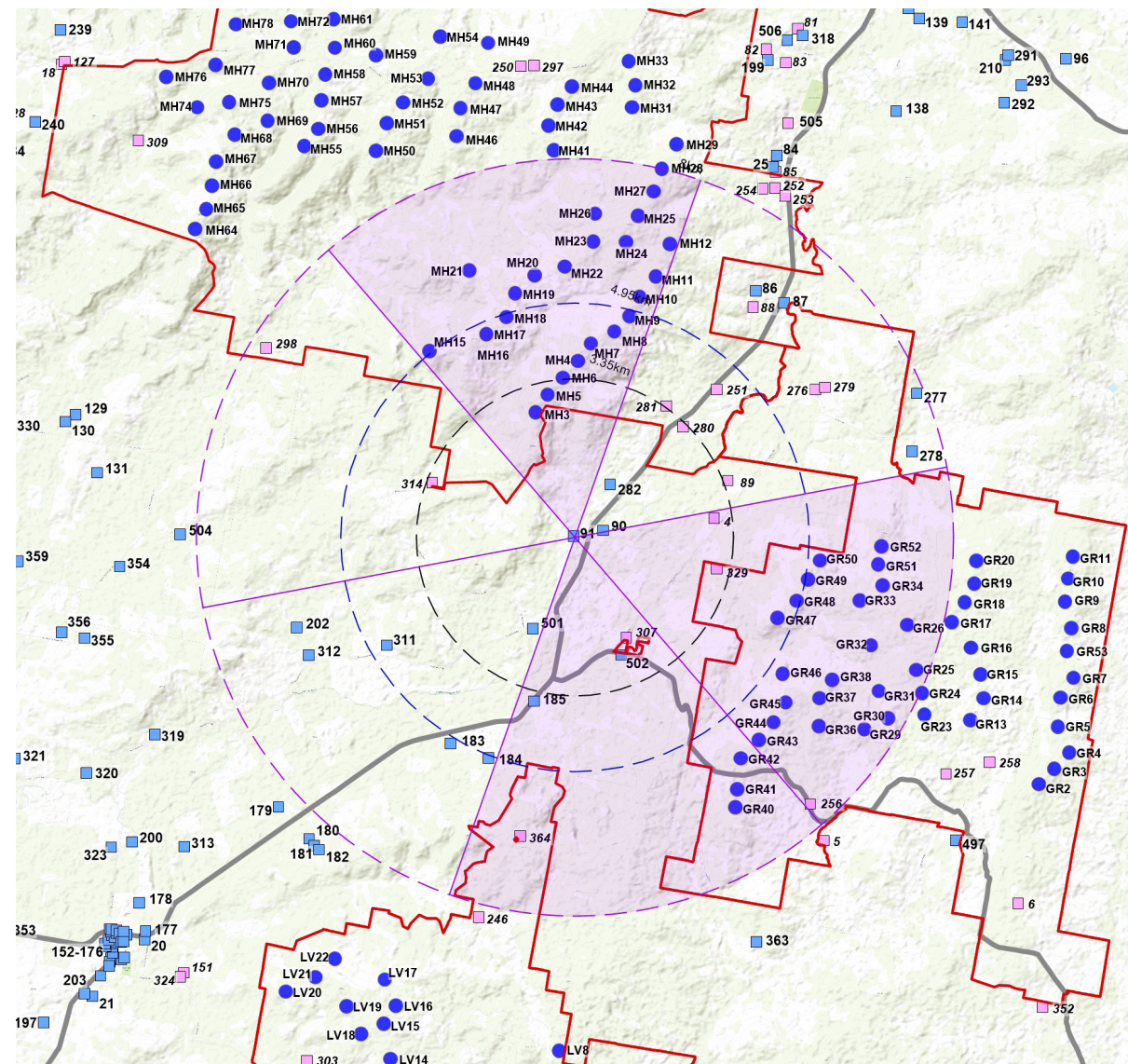
Multiple Wind Turbine Effect: Turbines have the potential to be visible in up to three (3) 60 degree sectors based on 3D assessment.

Landscape Scenic Integrity: The Project will have a moderate impact on scenic integrity at this location. The proposed turbines have the potential to be a visible in the northern direction.

Key Feature Disruption: Key features visible from the dwelling include the undulating farmlands in the north. The Project is likely to be a noticeable element along the undulation in the north.

Mitigation Measures:

Screening of the Project is achievable. Tree planting in the dwelling's foreground to the north would potentially reduce the Visual Impact Rating to LOW. Consultation with the landowner would be required to discuss appropriate mitigation options.

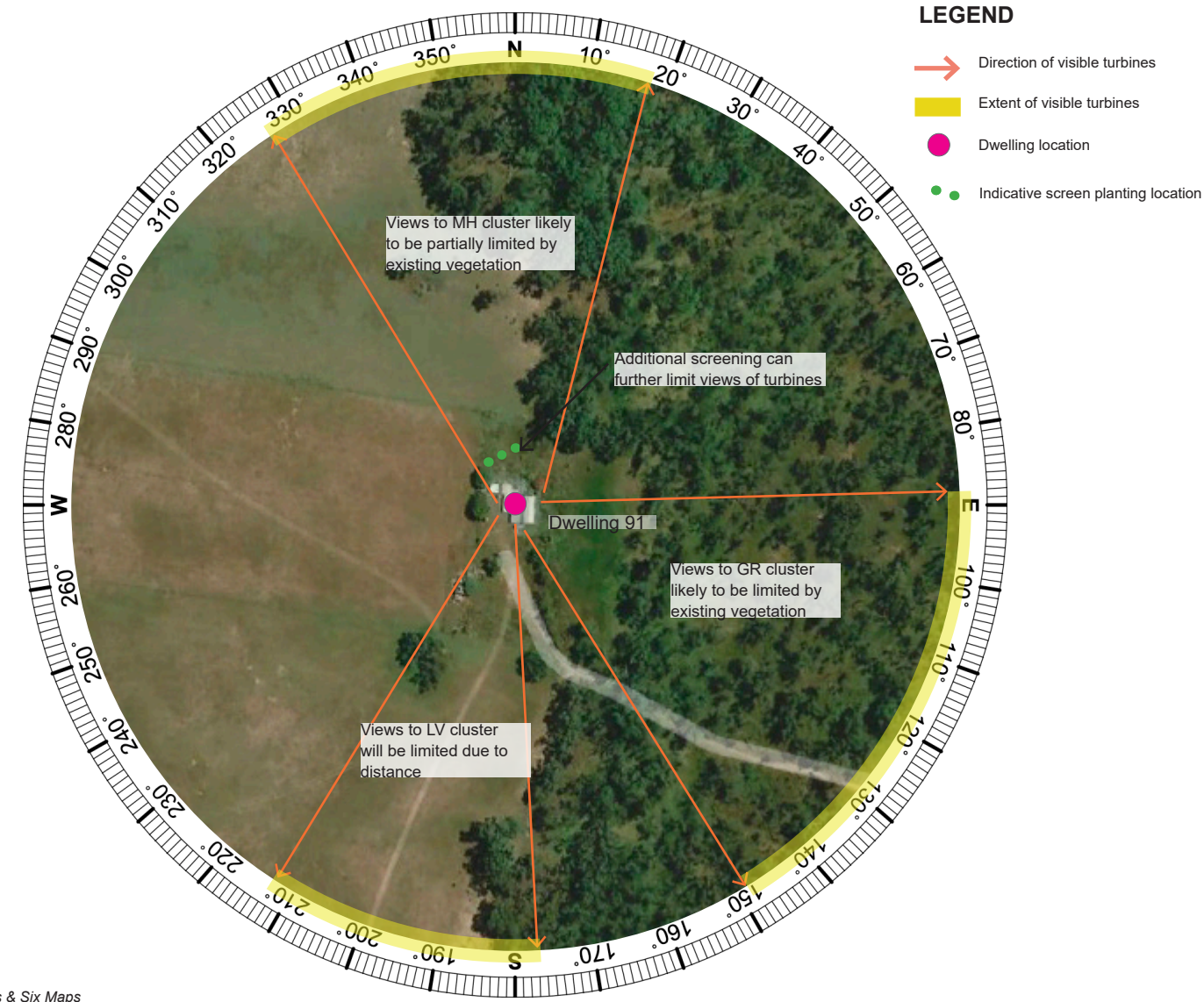


LEGEND

- Proposed turbine location
- Non-involved Dwelling
- 3,350 m from nearest turbine (Black Line)
- 4,950 m from nearest turbine (Blue Line)
- 8,000 m from nearest turbine
- 60° sector
- 60° sector with turbine



Aerial image sources: ESRI Topographic Maps & Six Maps



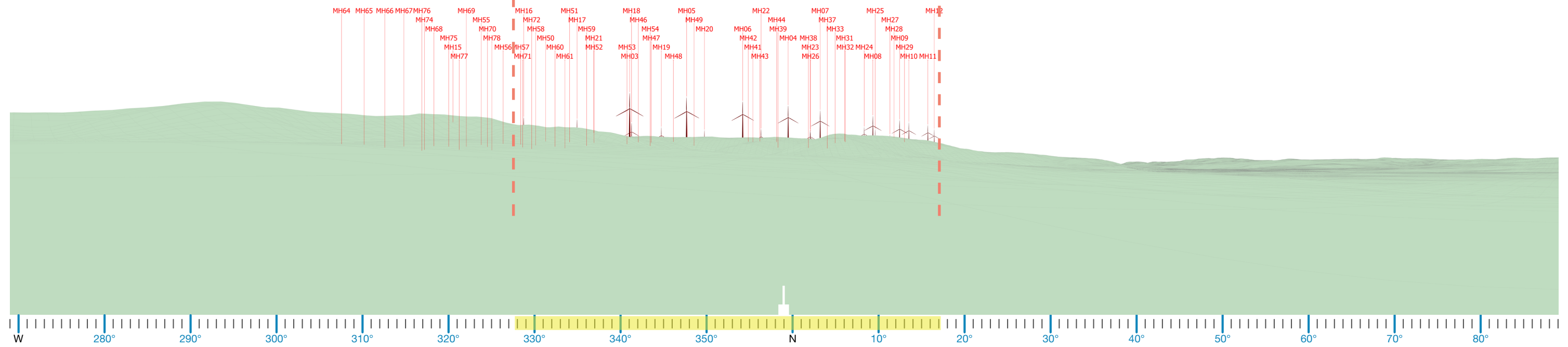
LEGEND

- Direction of visible turbines
- Extent of visible turbines
- Dwelling location
- Indicative screen planting location

B2. Dwelling Assessment Dwelling 91

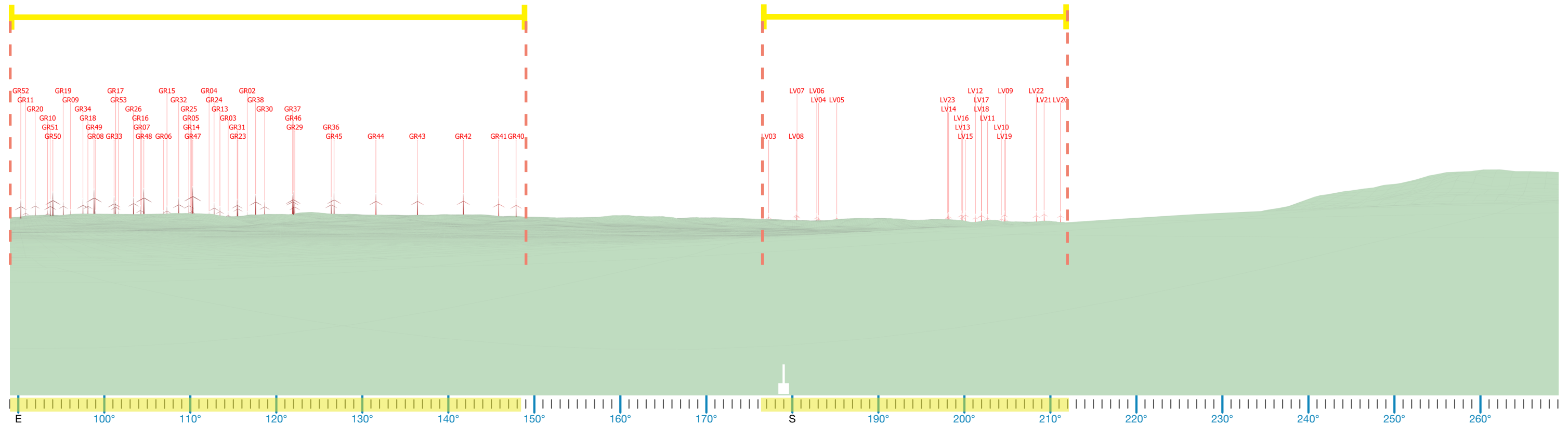
Wire Frame Diagram - 180 degree field of view - North

14 Turbines and 4 blade tips associated with the MH Cluster will be visible to the north of the dwelling. Existing scattered vegetation will fragment views. Additional planting to the north of the dwelling will further reduce visibility.



38 Turbines at hub height and five (5) blade tips associated with the GR Cluster likely to be visible to the south east. Existing dense vegetation will fragment views.

Turbines associated with LV Cluster in excess of 8 km from dwelling



Wire Frame Diagram - 180 degree field of view - South

B3. Dwelling Assessment Dwelling 177

DWELLING 177			
Nearest proposed turbine (km):	3.21 km	Visibility Distance Zone:	Near Middleground (NM)
Number of proposed turbines within Black Line (3350 m):	1	Viewer Sensitivity Zone:	Level 2: Moderate (Rural Dwelling)
Number of theoretical 60° Sectors (Based on 2D Plan):	1	Landscape Character Unit:	LCU05: Towns and Settlements (Leadville)
Number of visible 60° Sectors (Based on 3D Assessment):	1	Scenic Quality Rating:	Low
Number of potentially visible turbines (Based on topography alone)	89 turbines (11 at tip 78 at hub)	Visual Influence Zone:	VIZ2

Visual Impact Rating: Low

Assessment Notes:

The dwelling is located to the north west of the Leadville Cluster of turbines, accessed off Black Stump Way. Access to dwelling was not permitted but Moir LA took a representative photograph in May 2021 to identify existing conditions and assess the potential visual impacts. The photograph was taken at the intersection of Black Stump Way and Leadville Stock Route and it shows that existing vegetation along Black Stump Way located to the south of the dwelling (as seen in the aerial imagery) would help fragment views to the south east. MH and GR clusters are not likely to be visible due to existing intervening vegetation and structures.

Visual Impact Summary:

The turbines will be visible in one (1) 60 degree sector. Some turbines are likely to be screened by existing mature vegetation along Black Stump Way (to the south east of the dwelling). Views of the Project, however, are likely to be partially available in the east due to gaps in existing vegetation. The scenic quality rating of the landscape is LOW. It has been determined that the Visual Impact Rating for this dwelling is **LOW**.

Visual Performance Objectives Evaluation (VIZ2):

Visual Magnitude: One (1) turbine is located within the black line of visual magnitude. Three (3) turbines are located between the black and blue lines of visual magnitude.

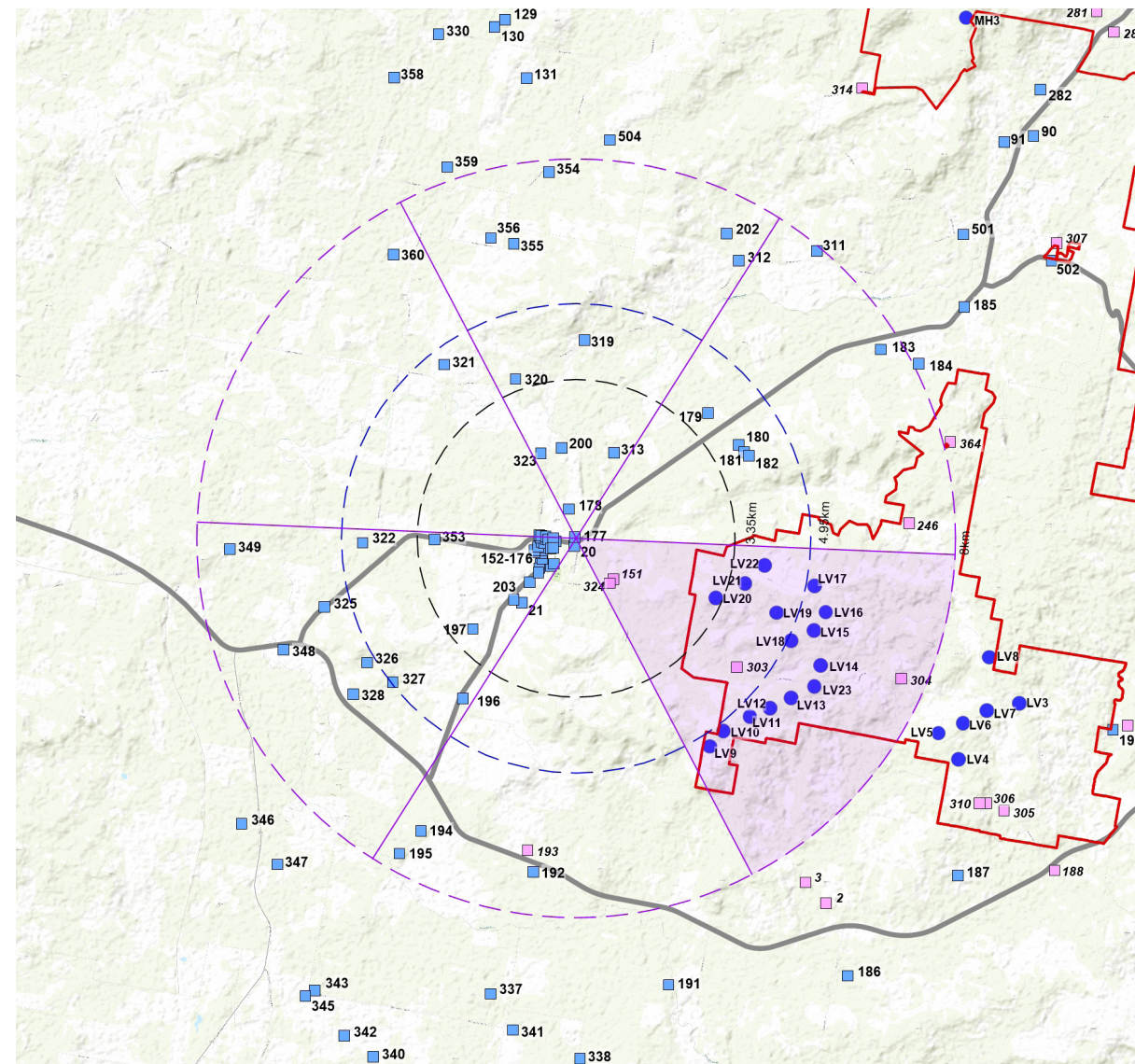
Multiple Wind Turbine Effect: Turbines have the potential to be visible in up to one (1) 60 degree sector based on 3D assessment.

Landscape Scenic Integrity: The Project will have a low impact on scenic integrity at this location. The proposed turbines have the potential to be partially visible in the south eastern direction.

Key Feature Disruption: Key features visible from the dwelling include the undulating farmlands in the north and east / south east. The Project is likely to be partially visible along the undulation in the south east.

Mitigation Measures:

Screening of the Project is achievable. Tree planting to the east and in the dwelling's foreground would potentially reduce the Visual Impact Rating to NEGLIGIBLE. Consultation with the landowner would be required to discuss appropriate mitigation options.

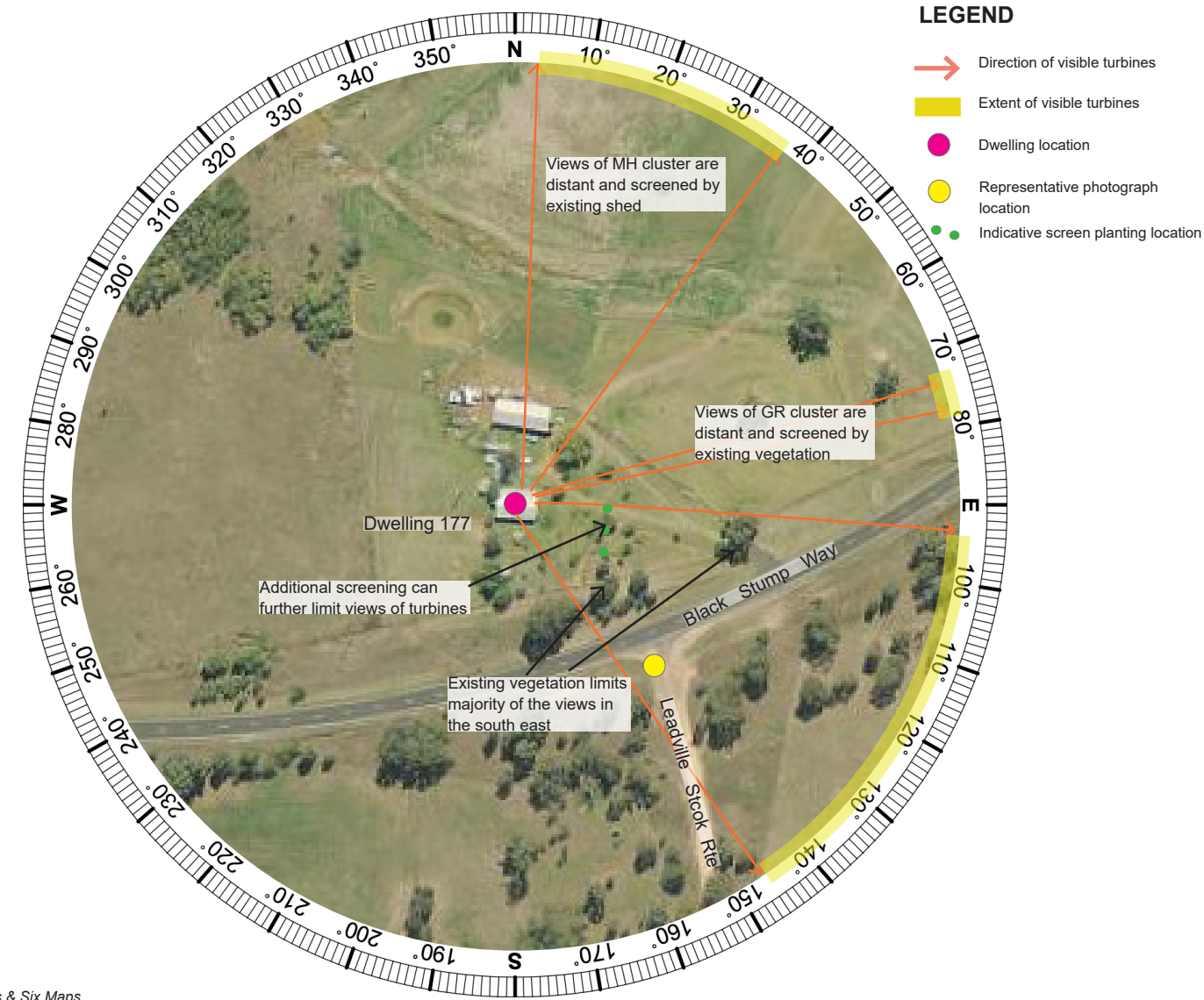


LEGEND

- Proposed turbine location
- Non-involved Dwelling
- 3,350 m from nearest turbine (Black Line)
- 4,950 m from nearest turbine (Blue Line)
- 8,000 m from nearest turbine
- 60° sector
- 60° sector with turbine



Aerial image sources: ESRI Topographic Maps & Six Maps



LEGEND

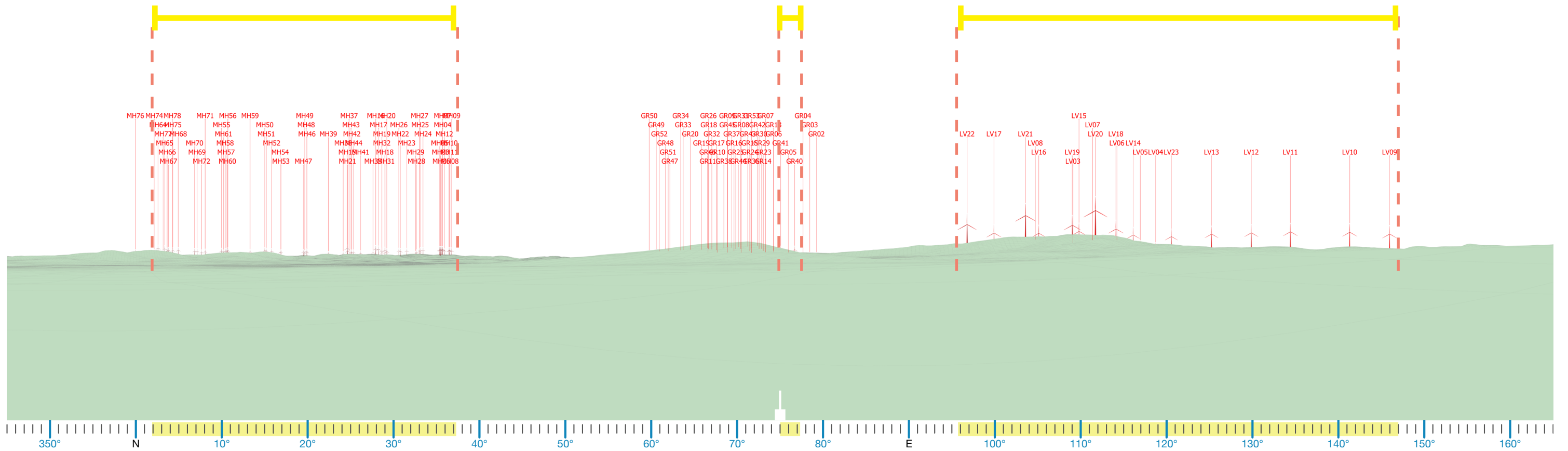
- Direction of visible turbines
- Extent of visible turbines
- Dwelling location
- Representative photograph location
- Indicative screen planting location

B3. Dwelling Assessment Dwelling 177

Turbines associated with MH Cluster in excess of 8 km from dwelling

Turbines associated with GR Cluster in excess of 8 km from dwelling

15 Turbines associated with the LV Cluster will be visible to the south east of the dwelling. Existing scattered vegetation will fragment views. Additional planting to the south east of the dwelling will further reduce visibility.



Wire Frame Diagram - 180 degree field of view

B3. Dwelling Assessment Dwelling 177



Existing view (photographed from intersection of Black Stump Way and Leadville Stock Route to the south of dwelling 177)

B4. Dwelling Assessment Dwelling 190

DWELLING 190			
Nearest proposed turbine (km):	2.08 km	Visibility Distance Zone:	Near Middleground (NM)
Number of proposed turbines within Black Line (3350 m):	4	Viewer Sensitivity Zone:	Level 2: Moderate (Rural Dwelling)
Number of theoretical 60° Sectors (Based on 2D Plan):	2	Landscape Character Unit:	LCU03: Alluvial Plains
Number of visible 60° Sectors (Based on 3D Assessment):	1	Scenic Quality Rating:	Low
Number of potentially visible turbines (Based on topography alone)	34 turbines (4 at tip 30 at hub)	Visual Influence Zone:	VIZ2

Visual Impact Rating: Negligible

Assessment Notes:

The dwelling is located to the south east of the LV Cluster of turbines, accessed off the Golden Highway. Access to dwelling was not permitted but Moir LA took a representative photograph in January 2022 to the west of dwelling to identify existing conditions and assess the potential visual impacts. The photograph shows that existing vegetation associated with Cainbil Creek to the north east of the dwelling (as seen in the aerial imagery) would help fragment views to the north towards the GR cluster. MH and LV clusters will be completely screened by intervening terrain.

Visual Impact Summary:

The turbines will be visible in two (2) 60 degree sectors. Majority of the turbines are likely to be screened by existing vegetation in the dwelling's foreground to the north/north east. The scenic quality rating of the landscape is LOW. It has been determined that the Visual Impact Rating for this dwelling is **NEGLIGIBLE**.

Visual Performance Objectives Evaluation (VIZ2):

Visual Magnitude: Four (4) turbines are located within the black line of visual magnitude. Two (2) turbines are located between the black and blue lines of visual magnitude.

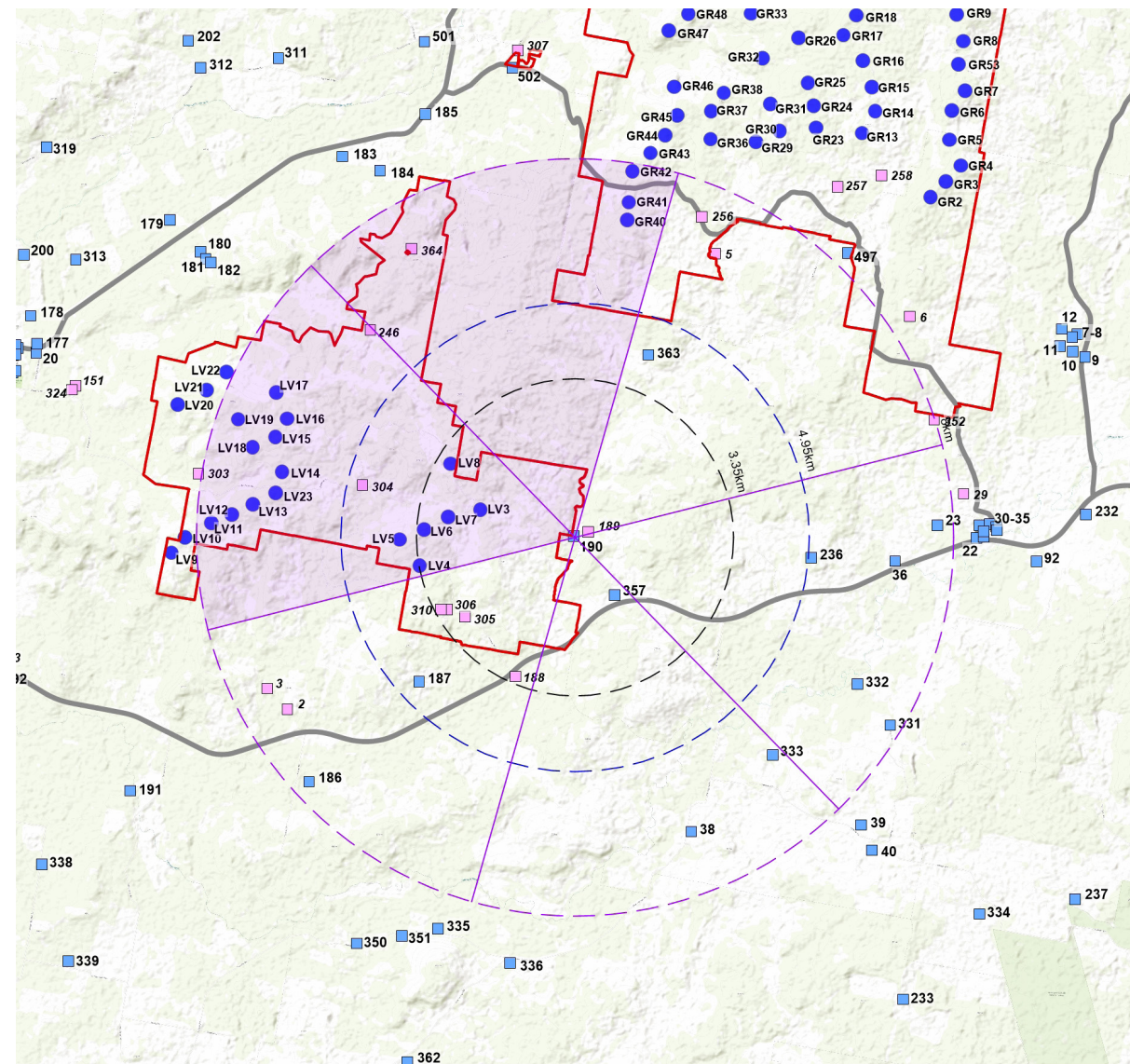
Multiple Wind Turbine Effect: Turbines have the potential to be visible in up to one (1) 60 degree sector based on 3D assessment.

Landscape Scenic Integrity: The Project will have a low impact on scenic integrity at this location. The proposed turbines have the potential to be a minor element in the visual catchment at this location.

Key Feature Disruption: Key features visible from the dwelling include the vegetated hills to the west / north west. The Project is likely to be a minor element in the landscape to the north east of the dwelling.

Mitigation Measures:

No mitigation measures required.

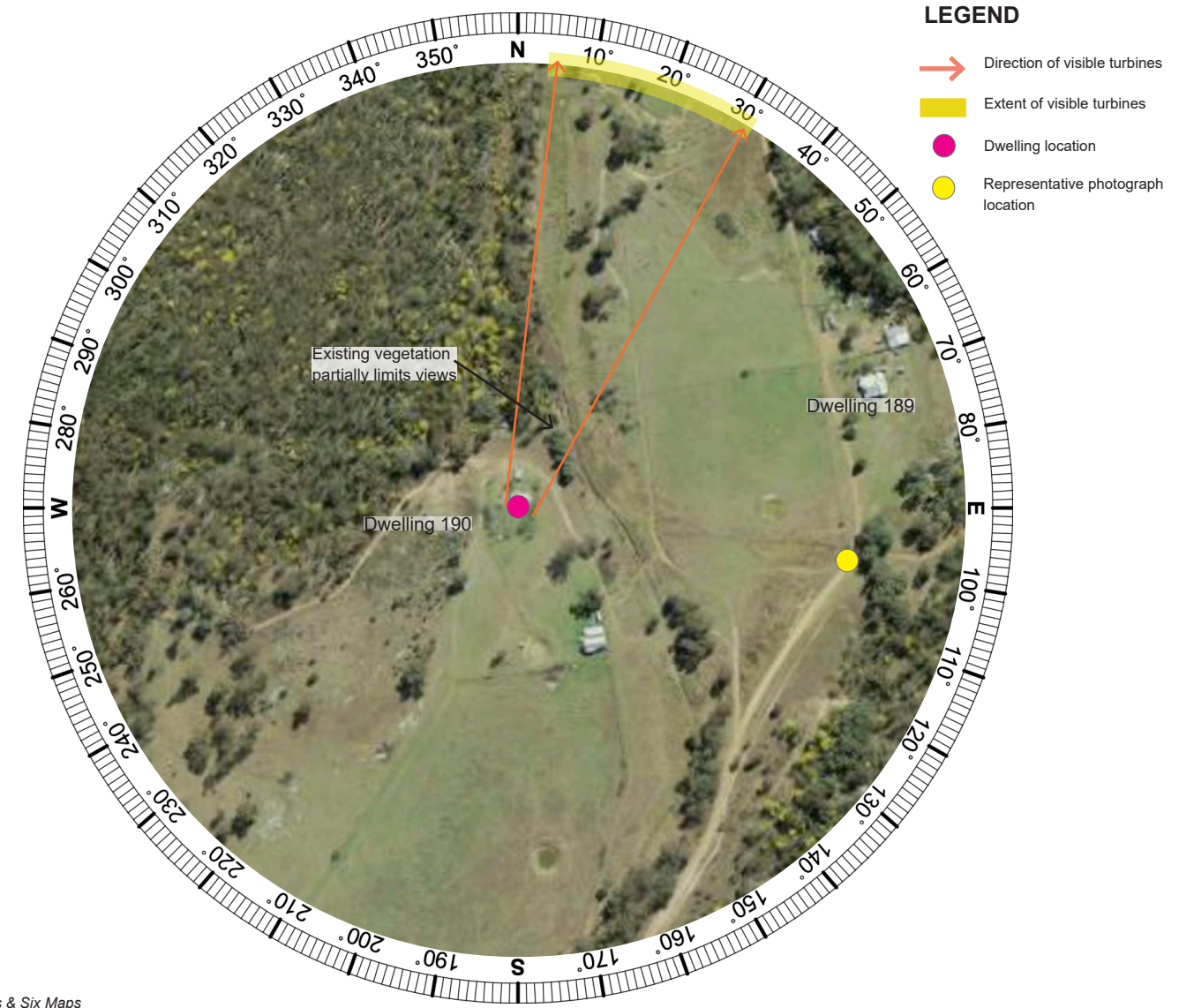


LEGEND

- Proposed turbine location
- Non-involved Dwelling
- 3,350 m from nearest turbine (Black Line)
- 4,950 m from nearest turbine (Blue Line)
- 8,000 m from nearest turbine
- 60° sector
- 60° sector with turbine



Aerial image sources: ESRI Topographic Maps & Six Maps



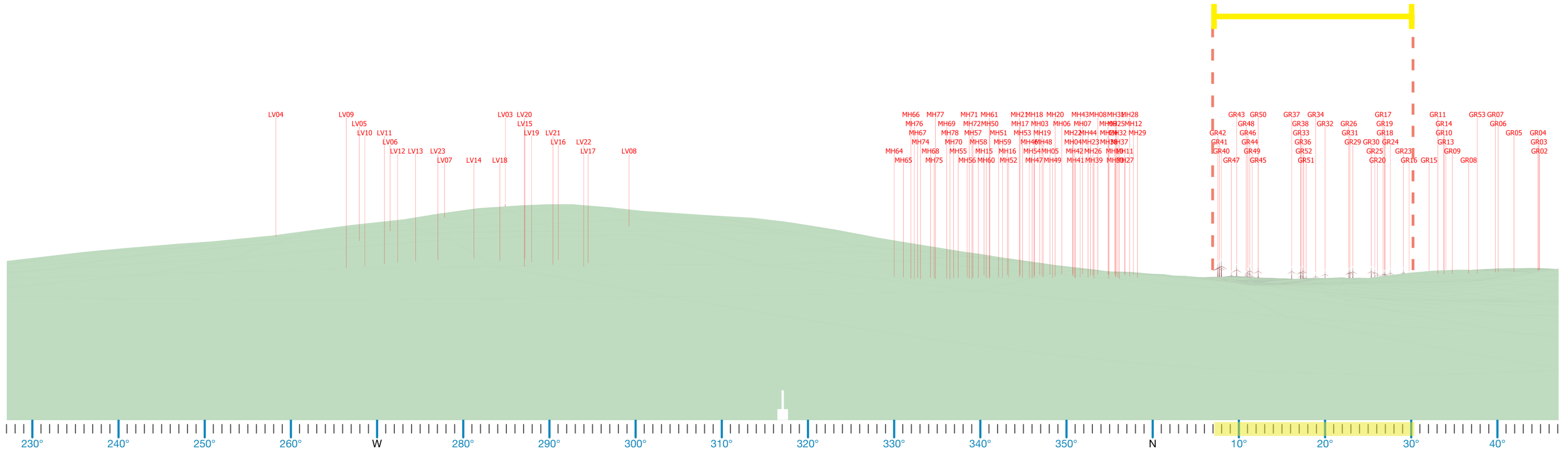
LEGEND

- Direction of visible turbines
- Extent of visible turbines
- Dwelling location
- Representative photograph location

B4. Dwelling Assessment Dwelling 190

All turbines associated with LV and MH clusters will be screened by existing terrain

Turbines associated with the GR Cluster likely to be visible in the north. Majority of these will be screened by existing vegetation in the dwelling's foreground.



Wire Frame Diagram - 180 degree field of view

B4. Dwelling Assessment Dwelling 190



Existing view (photographed from route off Golden Highway which is used to access dwellings 190 and 189. Photograph location is to the west of dwelling 190.

B5. Dwelling Assessment Dwelling 84

DWELLING 84			
Nearest proposed turbine (km):	2.15 km	Visibility Distance Zone:	Near Middleground (NM)
Number of proposed turbines within Black & Blue Lines (3350 - 4950 m):	6	Viewer Sensitivity Zone:	Level 2: Moderate (Rural Dwelling)
Number of theoretical 60° Sectors (Based on 2D Plan):	2	Landscape Character Unit:	LCU03: Alluvial Plains
Number of visible 60° Sectors (Based on 3D Assessment):	2	Scenic Quality Rating:	Low
Number of potentially visible turbines (Based on topography alone)	59 turbines (11 at tip 48 at hub)	Visual Influence Zone:	VIZ2

Visual Impact Rating: Moderate

Assessment Notes:

The dwelling is located to the west of the MH Cluster of turbines, accessed off Black Stump Way. Access to dwelling was not permitted. Aerial imagery indicates that the dwelling is surrounded by scattered vegetation to the south and east and this will limit majority of the views in these directions. Closest turbines are associated with the MH cluster which is likely to be visible along the undulations to the south west.

Visual Impact Summary:

The turbines will be visible in two (2) 60 degree sectors. Some turbines are likely to be screened by existing scattered vegetation in the south east. However, views to majority of the turbines will be available due to lack of intervening elements in the foreground to the south west. The scenic quality rating of the landscape is LOW. It has been determined that the Visual Impact Rating for this dwelling is **MODERATE**.

Visual Performance Objectives Evaluation (VIZ2):

Visual Magnitude: Six (6) turbines are located within the black line of visual magnitude. 12 turbines are located between the black and blue lines of visual magnitude.

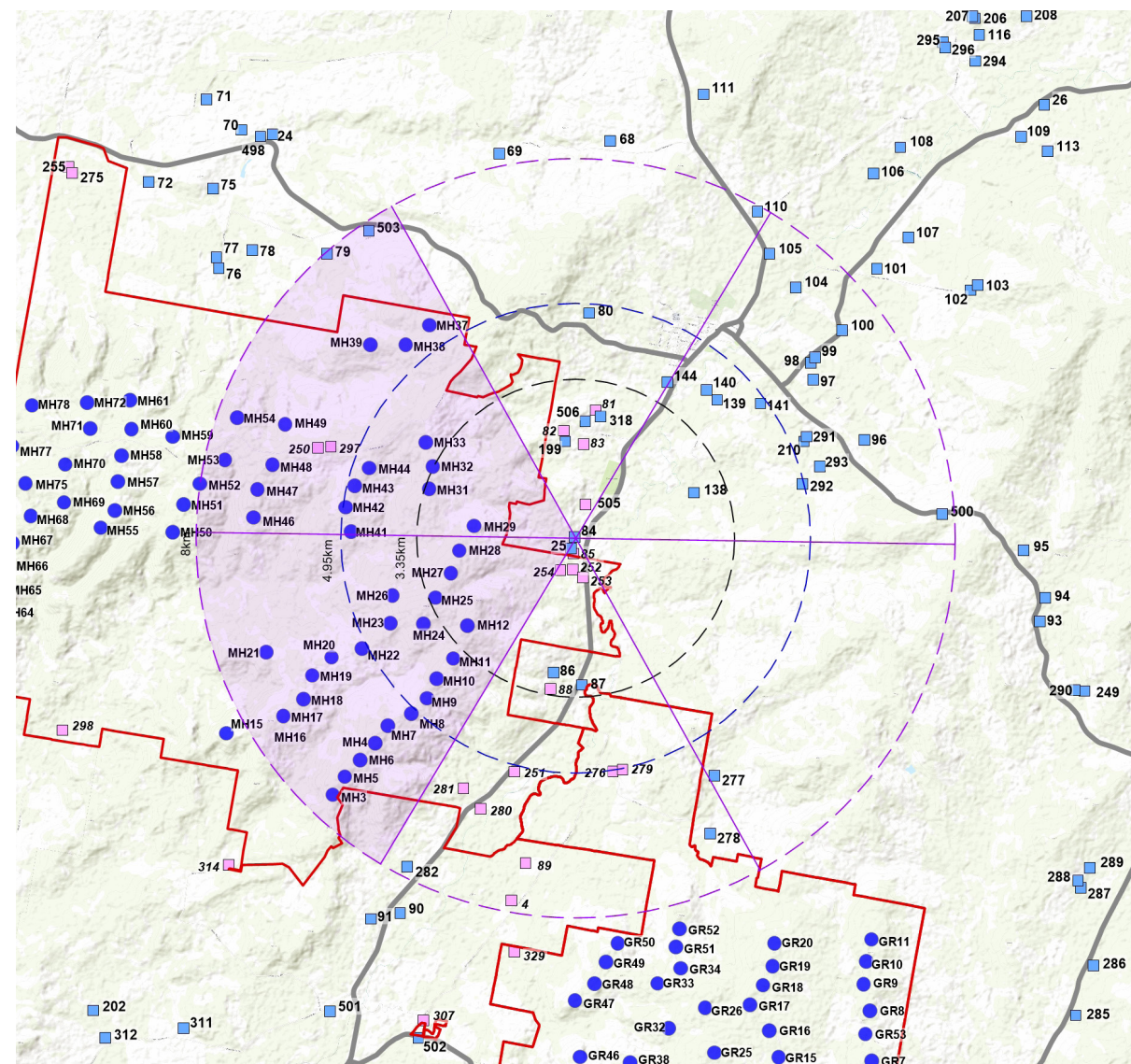
Multiple Wind Turbine Effect: Turbines have the potential to be visible in up to two (2) 60 degree sectors based on 3D assessment.

Landscape Scenic Integrity: The Project will have a moderate impact on scenic integrity at this location. The proposed turbines have the potential to be visible in the south western direction.

Key Feature Disruption: Key features visible from the dwelling include the undulating farmlands in the south west and south. The Project is likely to be a dominant element along the undulating farmlands in the south west.

Mitigation Measures:

Screening of the Project is achievable. Tree planting in the dwelling's foreground to the south west would potentially reduce the Visual Impact Rating to LOW. Consultation with the landowner would be required to discuss appropriate mitigation options.

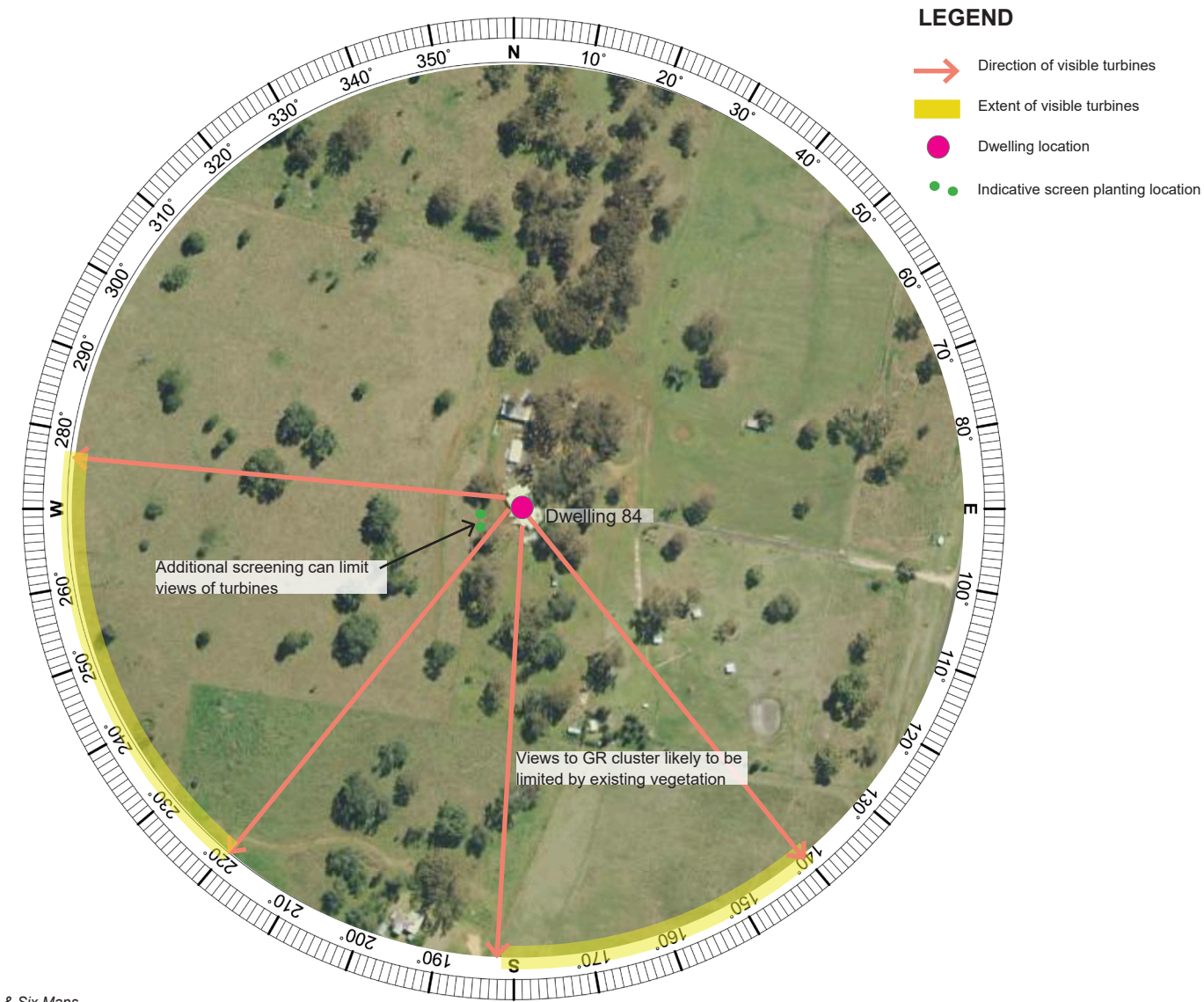


LEGEND

- Proposed turbine location
- Non-involved Dwelling
- 3,350 m from nearest turbine (Black Line)
- 4,950 m from nearest turbine (Blue Line)
- 8,000 m from nearest turbine
- 60° sector
- 60° sector with turbine



Aerial image sources: ESRI Topographic Maps & Six Maps



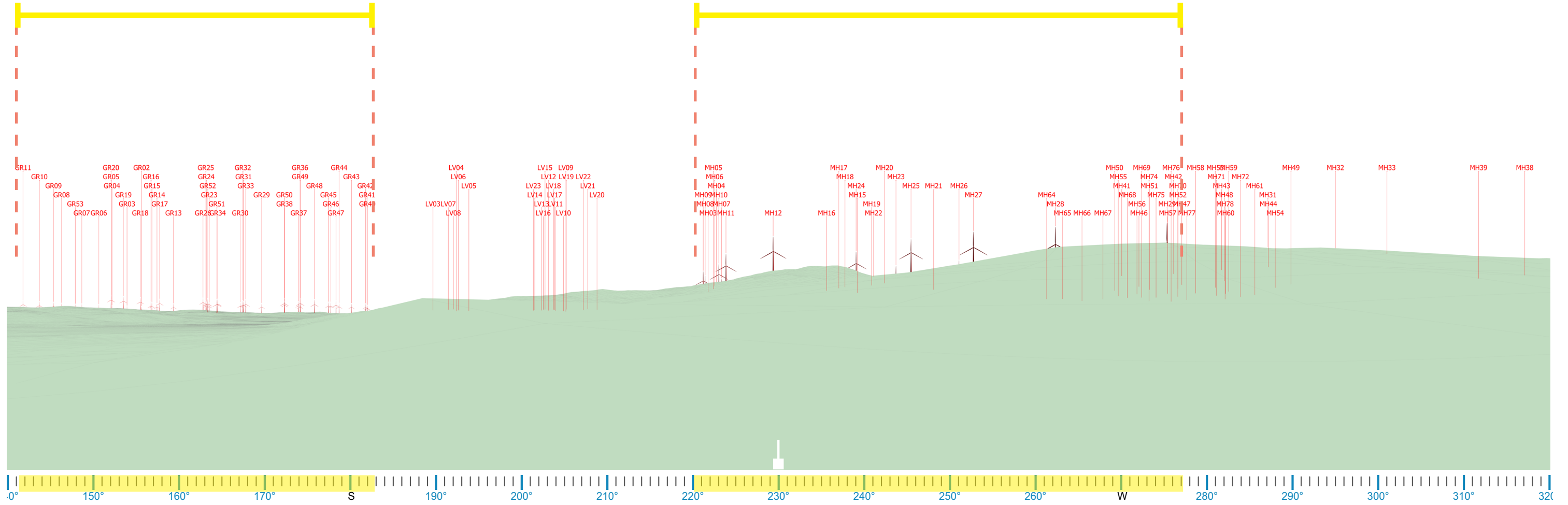
LEGEND

- Direction of visible turbines
- Extent of visible turbines
- Dwelling location
- Indicative screen planting location

B5. Dwelling Assessment Dwelling 84

Turbines associated with GR Cluster in excess of 8 km from dwelling

Eight (8) turbines at hub height and five (5) blade tips associated with the MH Cluster are likely to be visible along the ridgeline to the west of the dwelling. Existing scattered vegetation will fragment views. Additional planting to the south west of the dwelling will further reduce visibility.



Wire Frame Diagram - 180 degree field of view

B6. Dwelling Assessment Dwelling 277

DWELLING 277			
Nearest proposed turbine (km):	3.31 km	Visibility Distance Zone:	Near Middleground (NM)
Number of proposed turbines within Black Line (3350 m):	1	Viewer Sensitivity Zone:	Level 2: Moderate (Rural Dwelling)
Number of theoretical 60° Sectors (Based on 2D Plan):	3	Landscape Character Unit:	LCU02: Undulating Farmlands
Number of visible 60° Sectors (Based on 3D Assessment):	2	Scenic Quality Rating:	Moderate
Number of potentially visible turbines (Based on topography alone)	43 turbines (7 at tip 36 at hub)	Visual Influence Zone:	VIZ2

Visual Impact Rating: High

Assessment Notes:

The dwelling is located on relatively flat terrain and is accessed via Collier Road. Moir LA visited the dwelling in December 2021 and prepare a photomontage to identify potential visual impacts. The dwelling is orientated to the south. Existing scattered vegetation in the south east does little to screen views of the Project. It is likely that up to 33 turbines and one (1) blade tip will be visible along the undulations in the south. There are is one (1) turbine within the black line of visual magnitude and 11 within the black and blue lines of this dwelling.

Visual Impact Summary:

The turbines will be visible in three (3) 60 degree sectors however turbines to the north west will be screened by existing terrain. Views to the west towards turbines located approx 3.31 km away are open and, subsequently, the turbines will be a noticeable element in the view for this dwelling. The scenic quality rating of the landscape is MODERATE and the Project. It has been determined that the Visual Impact Rating for this dwelling is HIGH.

Visual Performance Objectives Evaluation (VIZ2):

Visual Magnitude: One (1) turbine is located within the black line of visual magnitude. 11 turbines are located between the black & blue lines of visual magnitude.

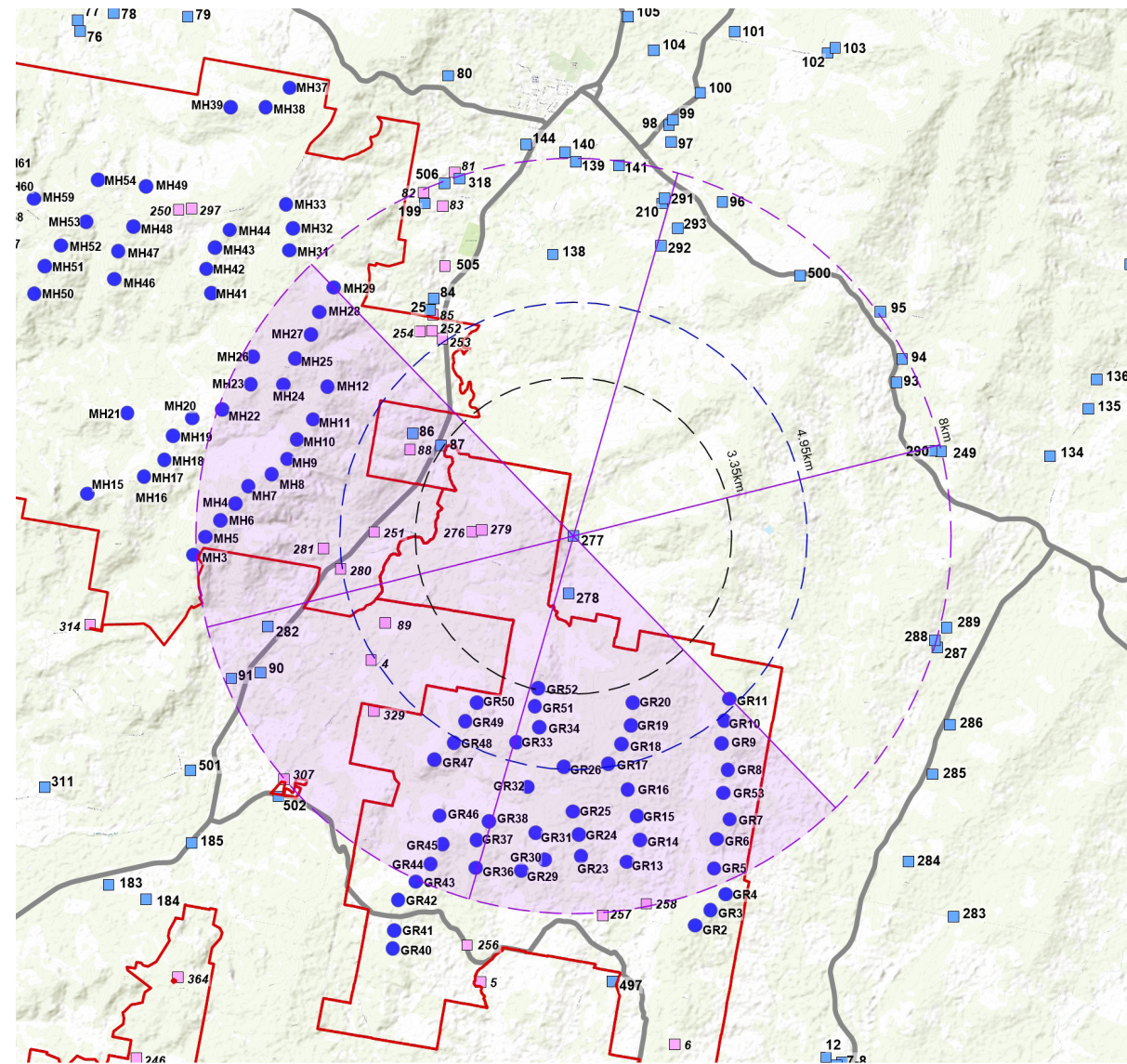
Multiple Wind Turbine Effect: Turbines have the potential to be visible in up to two (2) 60 degree sectors.

Landscape Scenic Integrity: The Project will have a moderate impact on scenic integrity at this location. The proposed turbines have the potential to be a noticeable element in the southern direction.

Key Feature Disruption: Key features visible from the dwelling include the ridgeline to the south and vegetated undulations in the west. The Project is likely to be visible in the southern direction. The Project is likely to have a moderate impact on the key landscape features visible from this dwelling.

Mitigation Measures:

Screening of the Project is achievable. Tree planting along the fenceline to the south of the dwelling would potentially reduce the Visual Impact Rating to LOW. Consultation with the landowner would be required to discuss appropriate mitigation options.

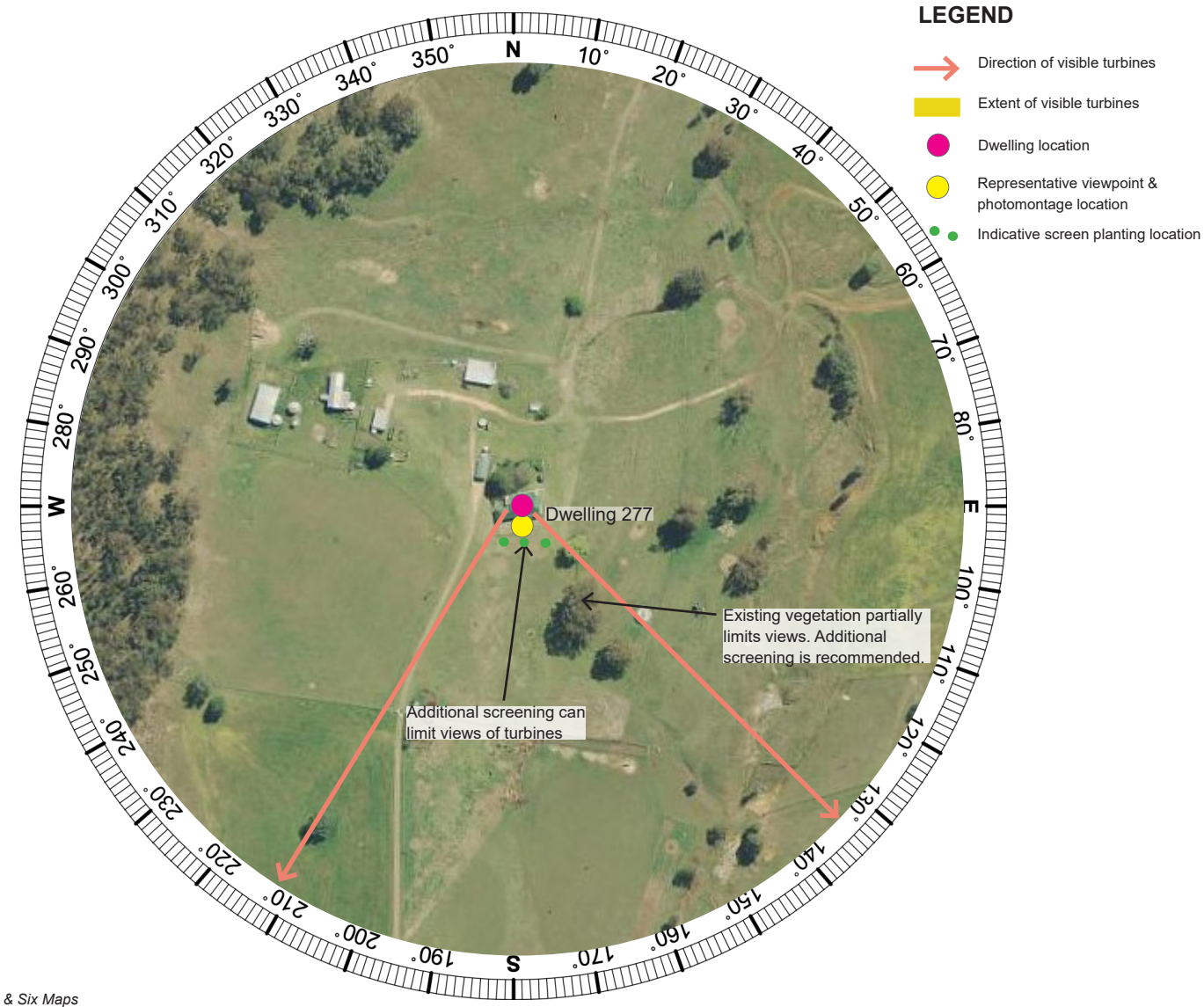


LEGEND

- Proposed turbine location
- Non-involved Dwelling
- 3,350 m from nearest turbine (Black Line)
- 4,950 m from nearest turbine (Blue Line)
- 8,000 m from nearest turbine
- 60° sector
- 60° sector with turbine



Aerial image sources: ESRI Topographic Maps & Six Maps



LEGEND

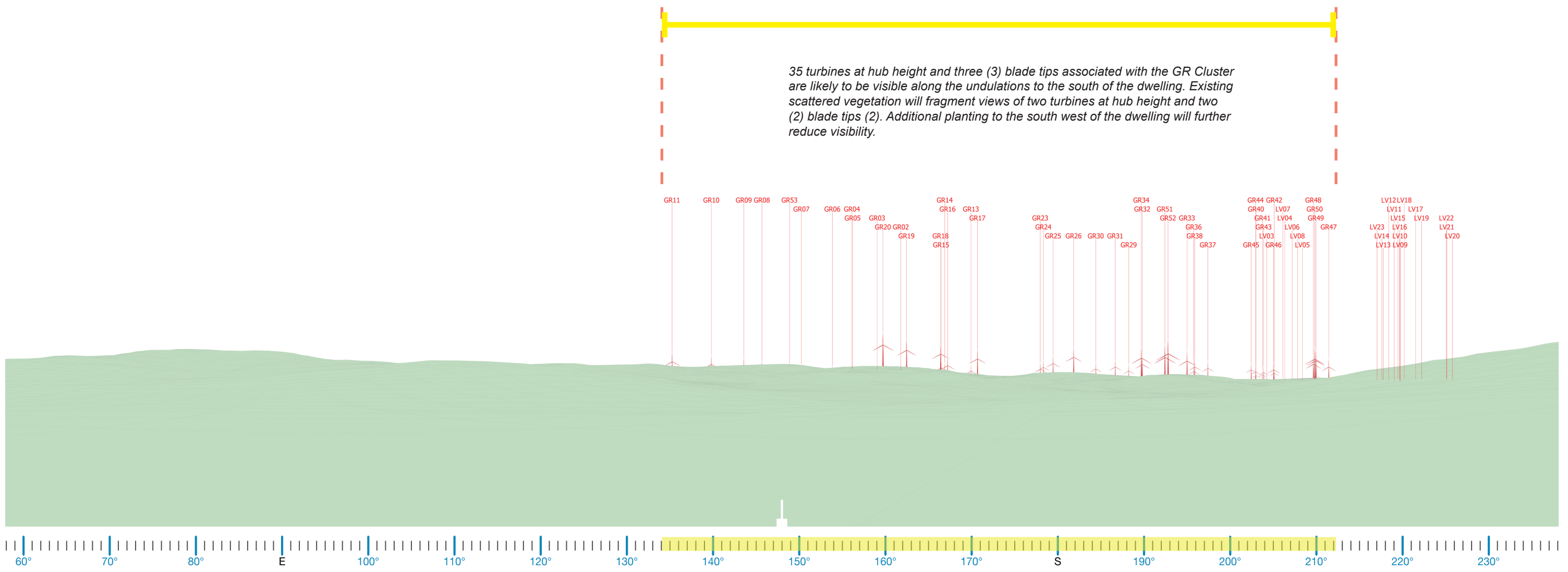
- Direction of visible turbines
- Extent of visible turbines
- Dwelling location
- Representative viewpoint & photomontage location
- Indicative screen planting location

B6. Dwelling Assessment Dwelling 277

180 Degree Photomontage (Proposed view)



35 turbines at hub height and three (3) blade tips associated with the GR Cluster are likely to be visible along the undulations to the south of the dwelling. Existing scattered vegetation will fragment views of two turbines at hub height and two (2) blade tips (2). Additional planting to the south west of the dwelling will further reduce visibility.



Wire Frame Diagram - 180 degree field of view

B7. Dwelling Assessment Dwelling 278

DWELLING 278			
Nearest proposed turbine (km):	2.10 km	Visibility Distance Zone:	Near Middleground (NM)
Number of proposed turbines within Black & Blue Lines (3350 - 4950 m):	8	Viewer Sensitivity Zone:	Level 2: Moderate (Rural Dwelling)
Number of theoretical 60° Sectors (Based on 2D Plan):	4	Landscape Character Unit:	LCU02: Undulating Farmlands
Number of visible 60° Sectors (Based on 3D Assessment):	3	Scenic Quality Rating:	Moderate
Number of potentially visible turbines (Based on topography alone)	74 turbines (27 at tip 47 at hub)	Visual Influence Zone:	VIZ2

Visual Impact Rating: Low

Assessment Notes:

The dwelling is located to the north of the GR Cluster of turbines, accessed off Collier Road. Access to dwelling was not permitted. Aerial imagery indicates that the dwelling is surrounded by dense windbreak vegetation to the south and west. Closest turbines are associated with the GR cluster and it is likely that majority of these turbines will be screened by the dense vegetation in the dwelling's foreground.

Visual Impact Summary:

The turbines will be visible in three (3) 60 degree sectors based on 3D assessment. Most turbines are likely to be screened by existing vegetation in the foreground. The scenic quality rating of the landscape is MODERATE. It has been determined that the Visual Impact Rating for this dwelling is **LOW**.

Visual Performance Objectives Evaluation (VIZ2):

Visual Magnitude: Eight (8) turbines are located within the black line of visual magnitude. Eight (8) turbines are located between the black and blue lines of visual magnitude.

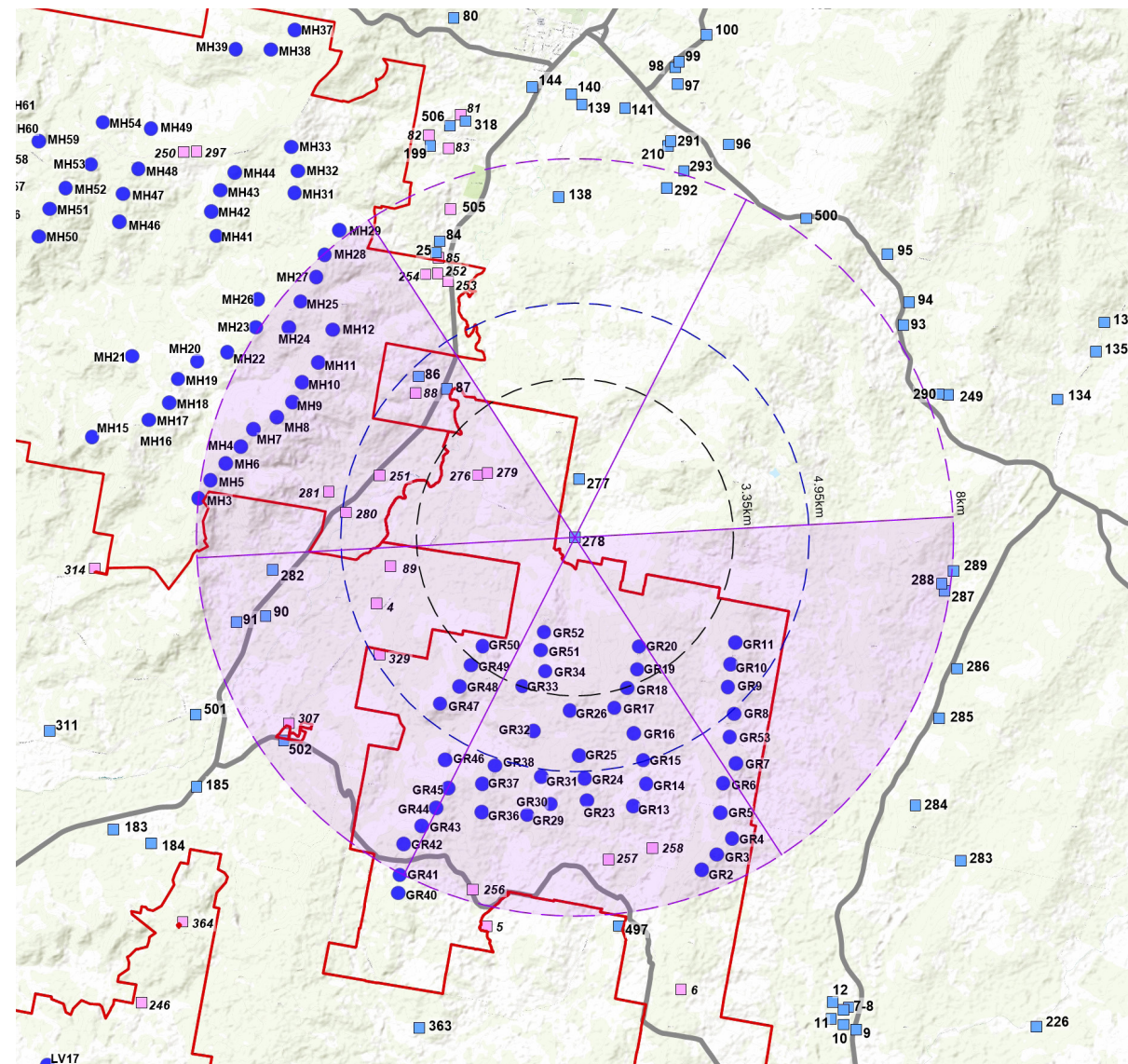
Multiple Wind Turbine Effect: Turbines have the potential to be visible in up to three (3) 60 degree sectors based on 3D assessment.

Landscape Scenic Integrity: The Project will have a low impact on scenic integrity at this location. It is likely that the turbines will be screened by existing vegetation in the dwelling's foreground.

Key Feature Disruption: Key features visible from the dwelling include the undulating farmlands in the west and south. It is likely that these features and the Project will be screened by existing intervening vegetation.

Mitigation Measures:

No mitigation measures required.

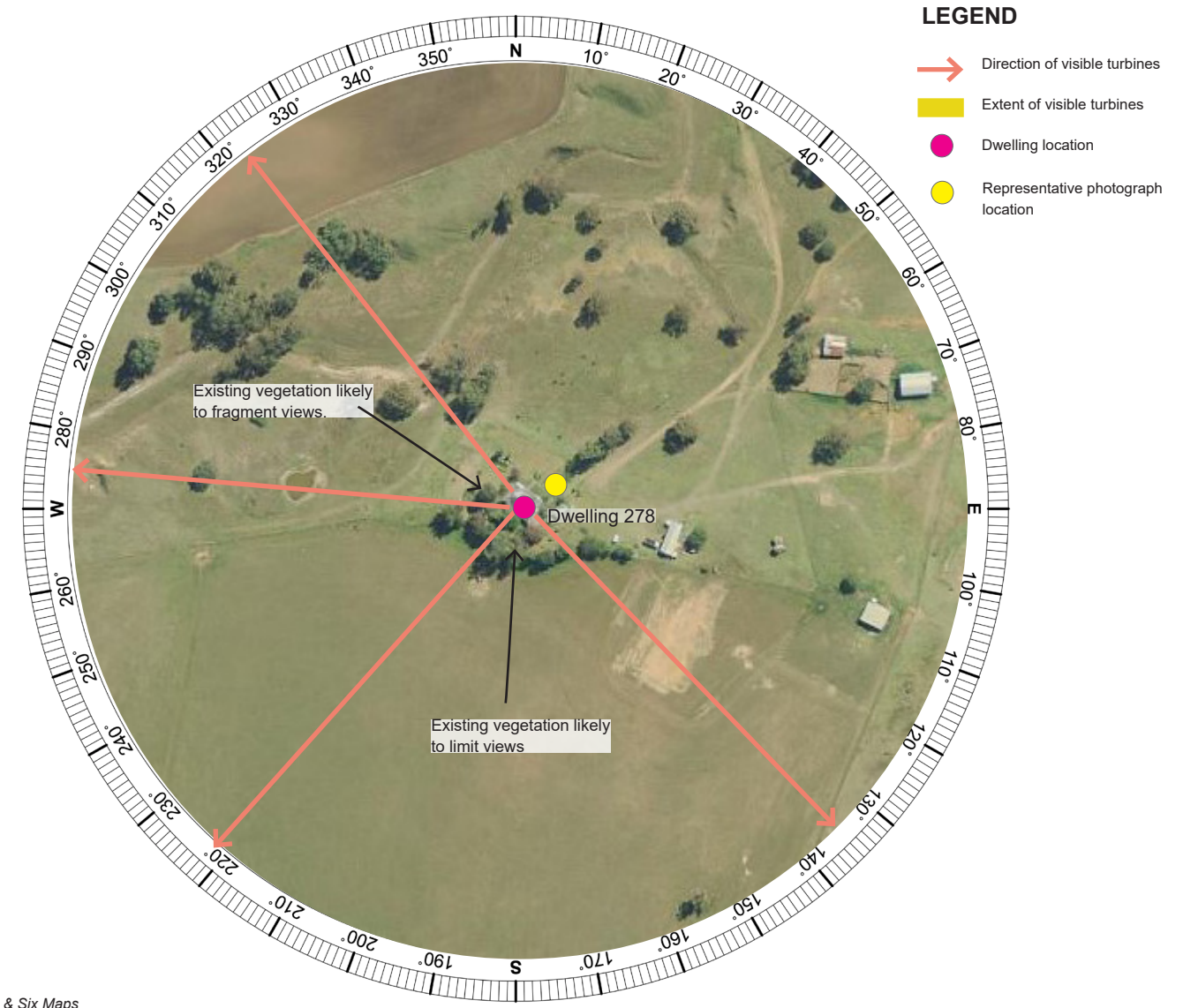


LEGEND

- Proposed turbine location
- Non-involved Dwelling
- 3,350 m from nearest turbine (Black Line)
- 4,950 m from nearest turbine (Blue Line)
- 8,000 m from nearest turbine
- 60° sector
- 60° sector with turbine



Aerial image sources: ESRI Topographic Maps & Six Maps

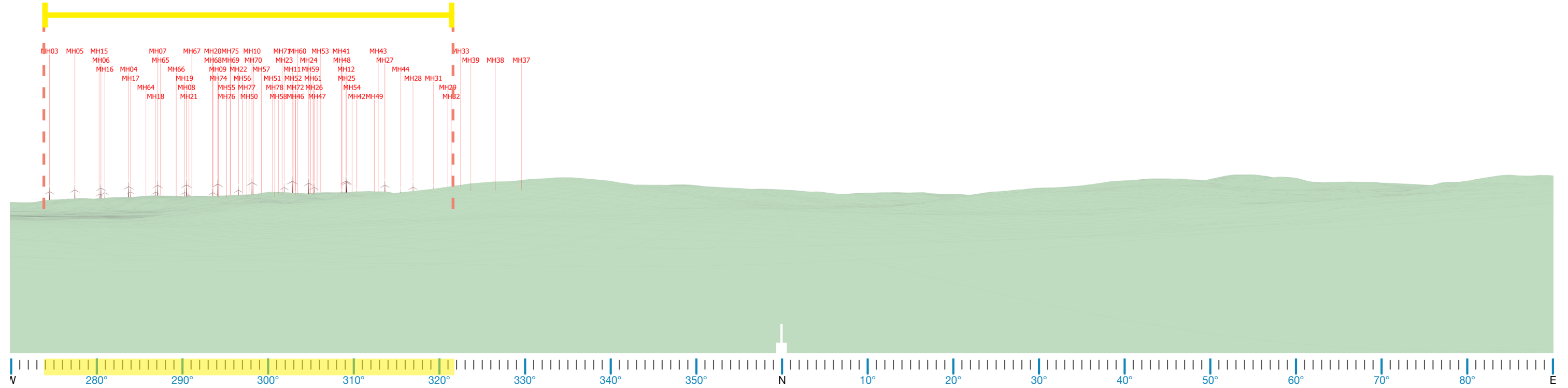


LEGEND

- Direction of visible turbines
- Extent of visible turbines
- Dwelling location
- Representative photograph location

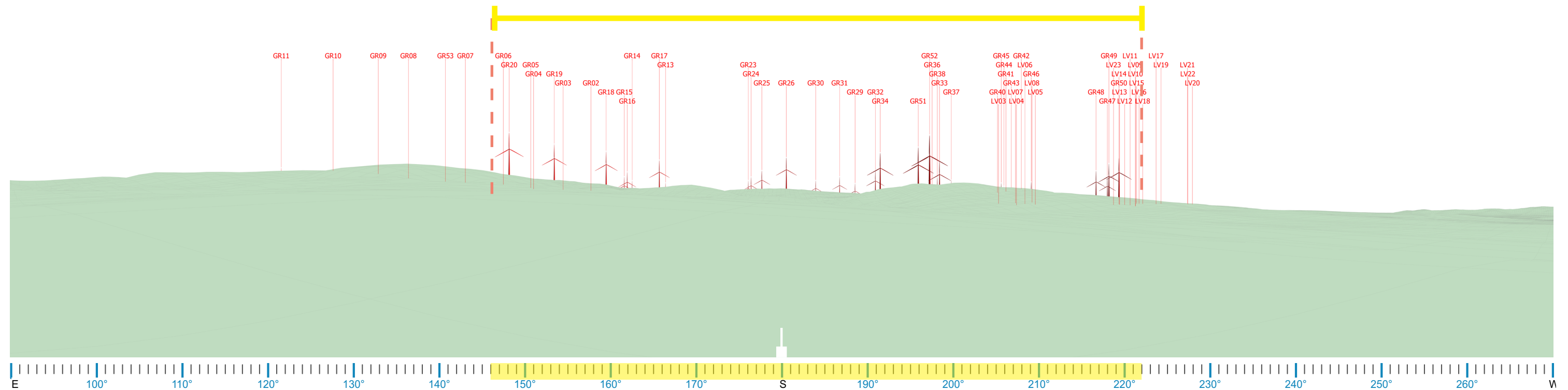
B7. Dwelling Assessment Dwelling 278

27 turbines at hub height and four (4) blade tips associated with the MH Cluster likely to be visible to the north west of dwelling. Existing vegetation in dwelling foreground will fragment views.



Wire Frame Diagram - 180 degree field of view (North)

22 turbines at hub height and three (3) blade tips associated with the GR Cluster likely to be visible to the south of dwelling. Existing dense vegetation in dwelling foreground to the south will fragment views.



Wire Frame Diagram - 180 degree field of view (South)

B8. Dwelling Assessment Dwelling 497

DWELLING 497			
Nearest proposed turbine (km):	2.13 km	Visibility Distance Zone:	Near Middleground (NM)
Number of proposed turbines within Black Line (3350 m):	10	Viewer Sensitivity Zone:	Level 2: Moderate (Rural Dwelling)
Number of theoretical 60° Sectors (Based on 2D Plan):	3	Landscape Character Unit:	LCU01: Vegetated Hills
Number of visible 60° Sectors (Based on 3D Assessment):	2	Scenic Quality Rating:	Moderate
Number of potentially visible turbines (Based on topography alone)	105 turbines (31 at tip 74 at hub)	Visual Influence Zone:	VIZ2

Visual Impact Rating: Low

Assessment Notes:

The dwelling is accessed via Moorefield Road. Moir LA visited the dwelling in June 2022 to identify existing conditions and prepare a photomontage to identify potential visual impacts. Existing vegetation and the farm buildings in the north, west and south west will help to limit views toward majority of the Project. It is likely that up to 15 turbines will be partially visible. There are 10 turbines within the black line of visual magnitude.

Visual Impact Summary:

The turbines will be visible in two (2) 60 degree sectors however turbines to the north and west will be predominantly screened by existing vegetation and built form. The scenic quality rating of the landscape is MODERATE. It has been determined that the Visual Impact Rating for this dwelling is **LOW**.

Visual Performance Objectives Evaluation (VIZ2):

Visual Magnitude: 10 turbines are located within the black line of visual magnitude. 18 turbines are located between the black and blue lines of visual magnitude.

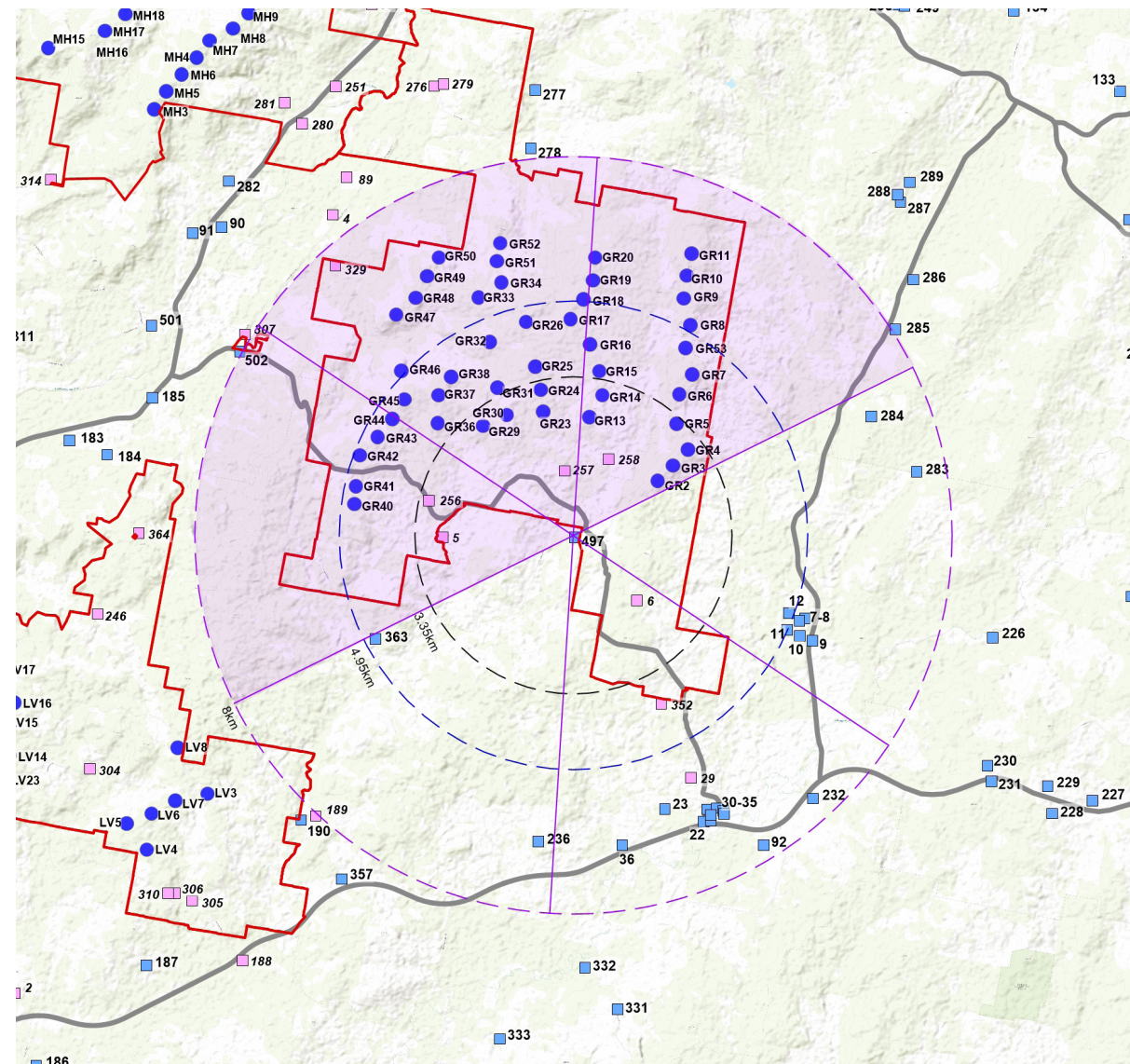
Multiple Wind Turbine Effect: Turbines have the potential to be visible in up to two (2) 60 degree sectors. However, existing vegetation and farm buildings will assist in screening views.

Landscape Scenic Integrity: The Project will have a low impact on scenic integrity at this location. Majority of the proposed turbines will be screened by intervening elements.

Key Feature Disruption: Key features visible from the dwelling include the dense vegetation around the dwelling and undulating farmlands to the north. The Project is likely to be partially visible in the north. Views to key landscape features are not likely to be impacted by the Project.

Mitigation Measures:

Majority of the views are screened by existing vegetation. No additional screening is recommended.

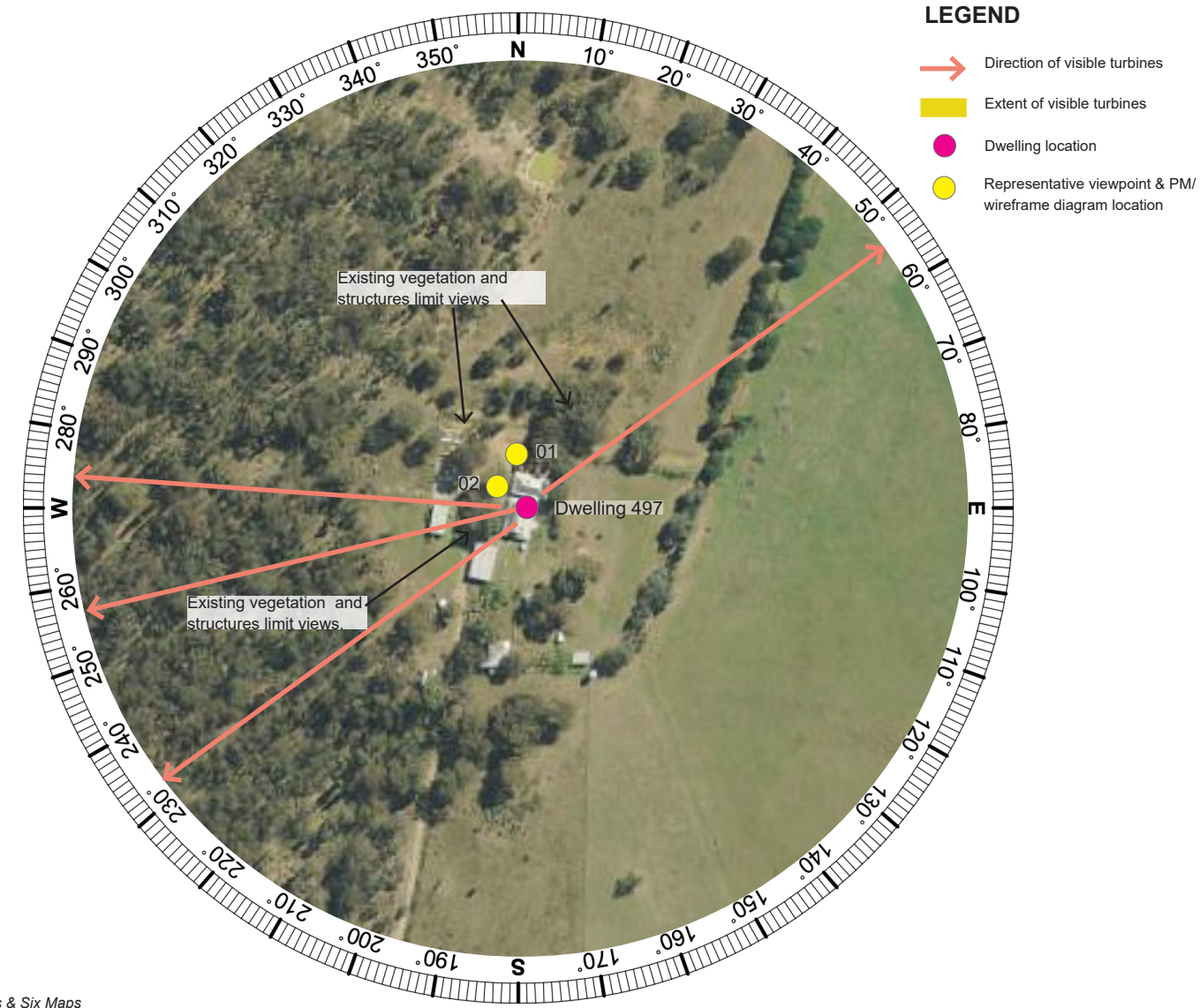


LEGEND

- Proposed turbine location
- Non-involved Dwelling
- 3,350 m from nearest turbine (Black Line)
- 4,950 m from nearest turbine (Blue Line)
- 8,000 m from nearest turbine
- 60° sector
- 60° sector with turbine



Aerial image sources: ESRI Topographic Maps & Six Maps



LEGEND

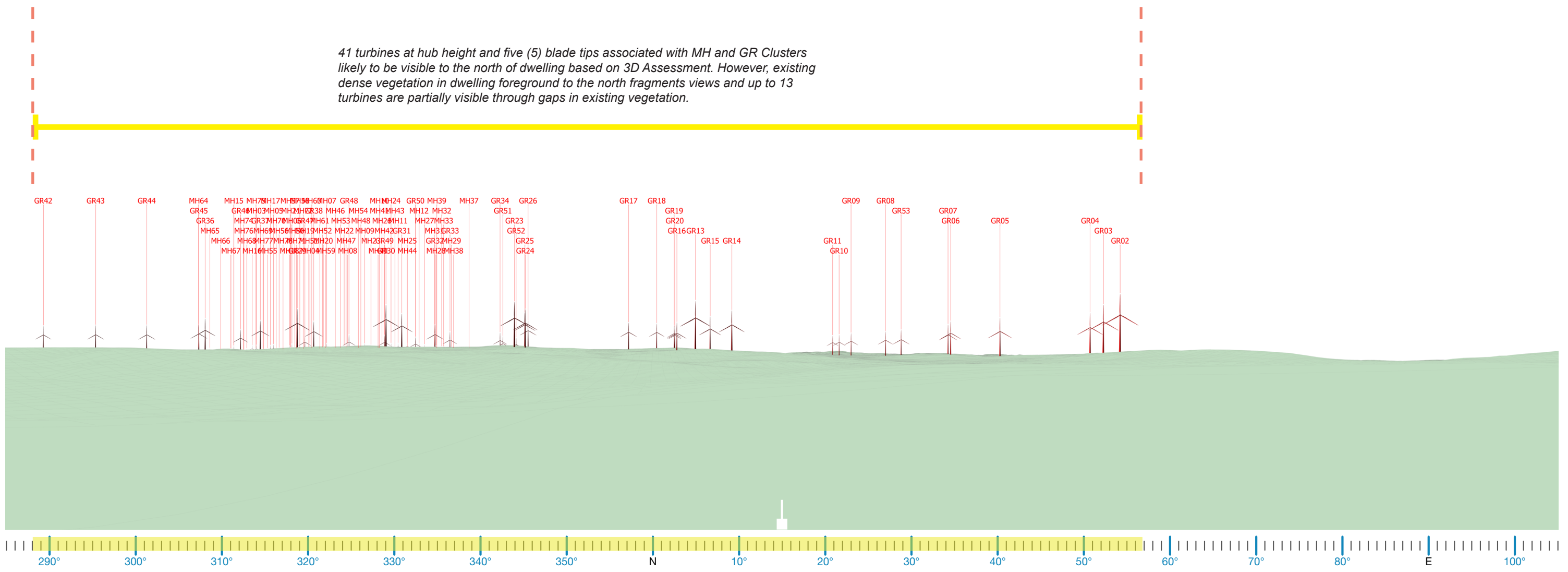
- Direction of visible turbines
- Extent of visible turbines
- Dwelling location
- Representative viewpoint & PM/wireframe diagram location

B8. Dwelling Assessment Dwelling 497

180 Degree Photomontage (Proposed view 1 - looking north)



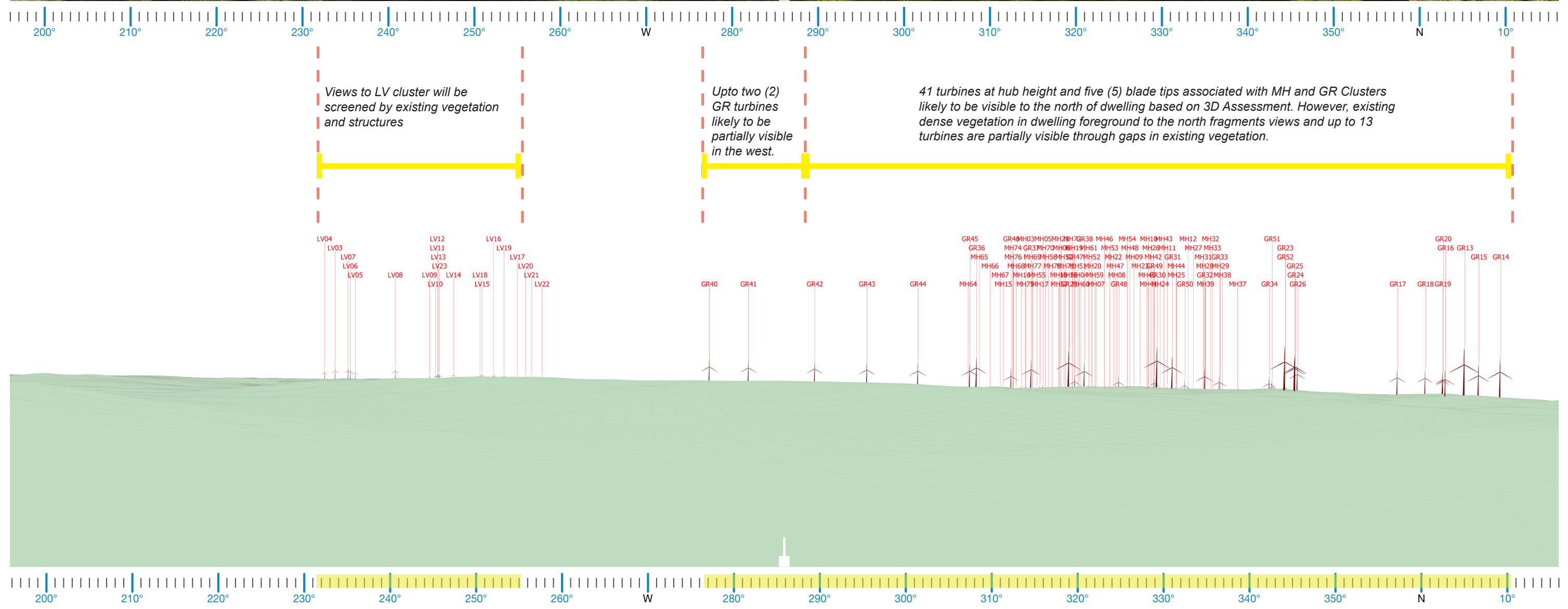
41 turbines at hub height and five (5) blade tips associated with MH and GR Clusters likely to be visible to the north of dwelling based on 3D Assessment. However, existing dense vegetation in dwelling foreground to the north fragments views and up to 13 turbines are partially visible through gaps in existing vegetation.



Wire Frame Diagram - 180 degree field of view

B8. Dwelling Assessment Dwelling 497

180 Degree Panorama (Existing view 2 - looking west)



Wire Frame Diagram - 180 degree field of view

B9. Dwelling Assessment Dwelling 502

DWELLING 502			
Nearest proposed turbine (km):	3.31 km	Visibility Distance Zone:	Near Middleground (NM)
Number of proposed turbines within Black Line (3350 m):	1	Viewer Sensitivity Zone:	Level 2: Moderate (Rural Dwelling)
Number of theoretical 60° Sectors (Based on 2D Plan):	3	Landscape Character Unit:	LCU03: Alluvial Plains
Number of visible 60° Sectors (Based on 3D Assessment):	3	Scenic Quality Rating:	Low
Number of potentially visible turbines (Based on topography alone)	98 38 at tip 60 at hub	Visual Influence Zone:	VIZ2

Visual Impact Rating: Moderate

Assessment Notes:

Dwelling 502 is the site of a previous dwelling. No dwelling is currently located on the lot in this location, however an assessment has been undertaken to ensure that the Project is considered for any future build in this location. The previous dwelling was located to the west of the GR Cluster of turbines, accessed off Moorefield Road. Moir LA took a representative photograph at the property boundary in May 2021 to identify existing conditions and assess the potential visual impacts. The photograph shows that the dwelling location is surrounded by scattered vegetation along the northern and eastern boundary (as seen in the aerial imagery). Existing vegetation will partially fragment views. LV cluster of turbines are located in excess of 8 km from the site and will be difficult to discern. Majority of GR and MH clusters will be visible to the north and east.

Visual Impact Summary:

The turbines will be visible in three (3) 60 degree sectors. Some views may be partially limited due to existing vegetation. Views of the GR and MH clusters, however, are likely to be available in the north and east directions. The scenic quality rating of the landscape is LOW. It has been determined that the Visual Impact Rating for this dwelling is **MODERATE**.

Visual Performance Objectives Evaluation (VIZ2):

Visual Magnitude: One (1) turbine is located within the black line of visual magnitude. 13 turbines are located between the black and blue lines of visual magnitude.

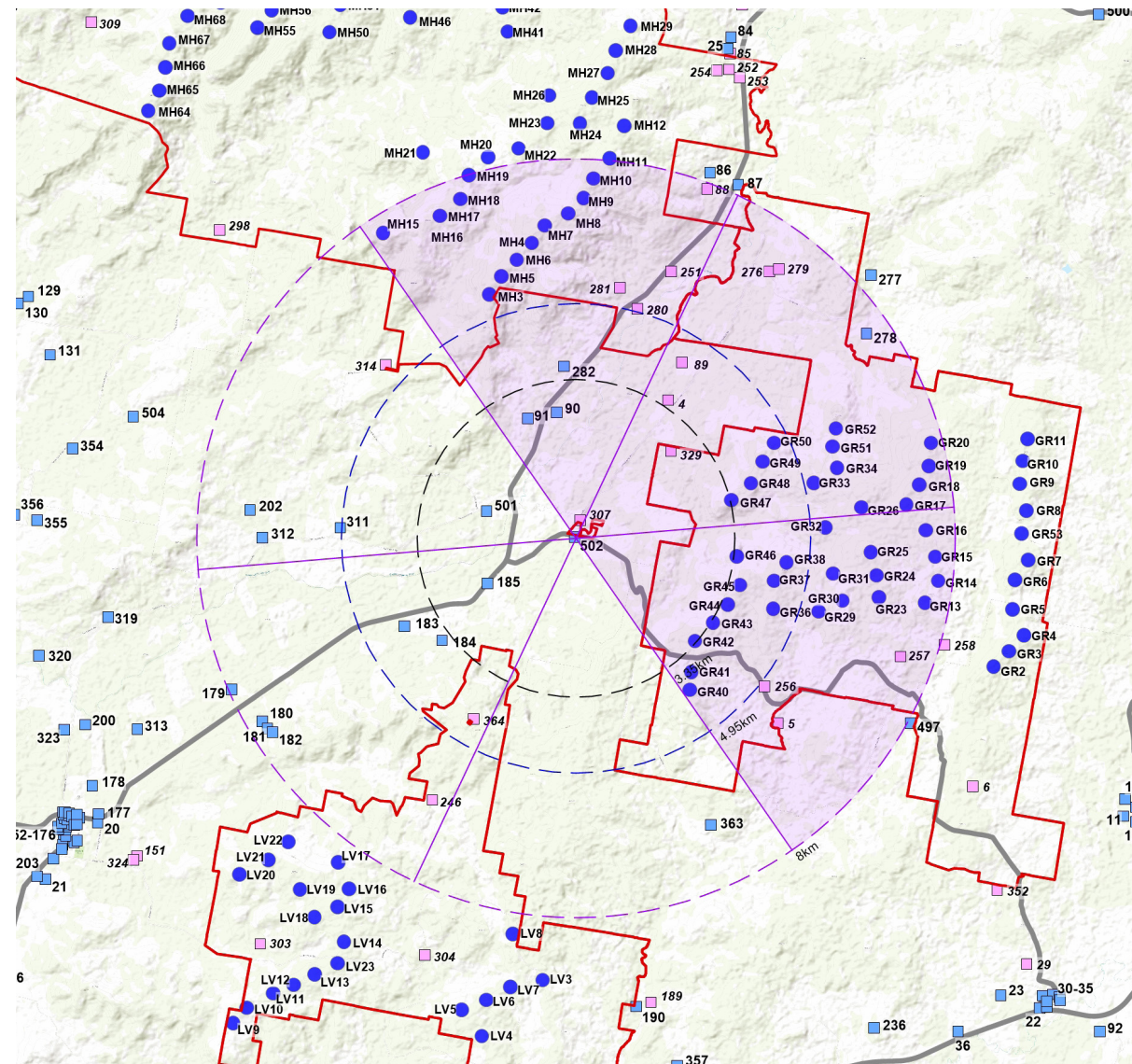
Multiple Wind Turbine Effect: Turbines have the potential to be visible in up to three (3) 60 degree sectors based on 3D assessment.

Landscape Scenic Integrity: The Project will be a visible element in the visual catchment, however the scenic integrity will remain intact. .

Key Feature Disruption: The vegetated ridgeline surrounding the lot will remain the dominant landscape feature.

Mitigation Measures:

Screening of the Project is achievable. Tree planting along the northern and eastern sides of the dwelling location would reduce the Visual Impact Rating to LOW. Consultation with the landowner would be required to discuss appropriate mitigation options.

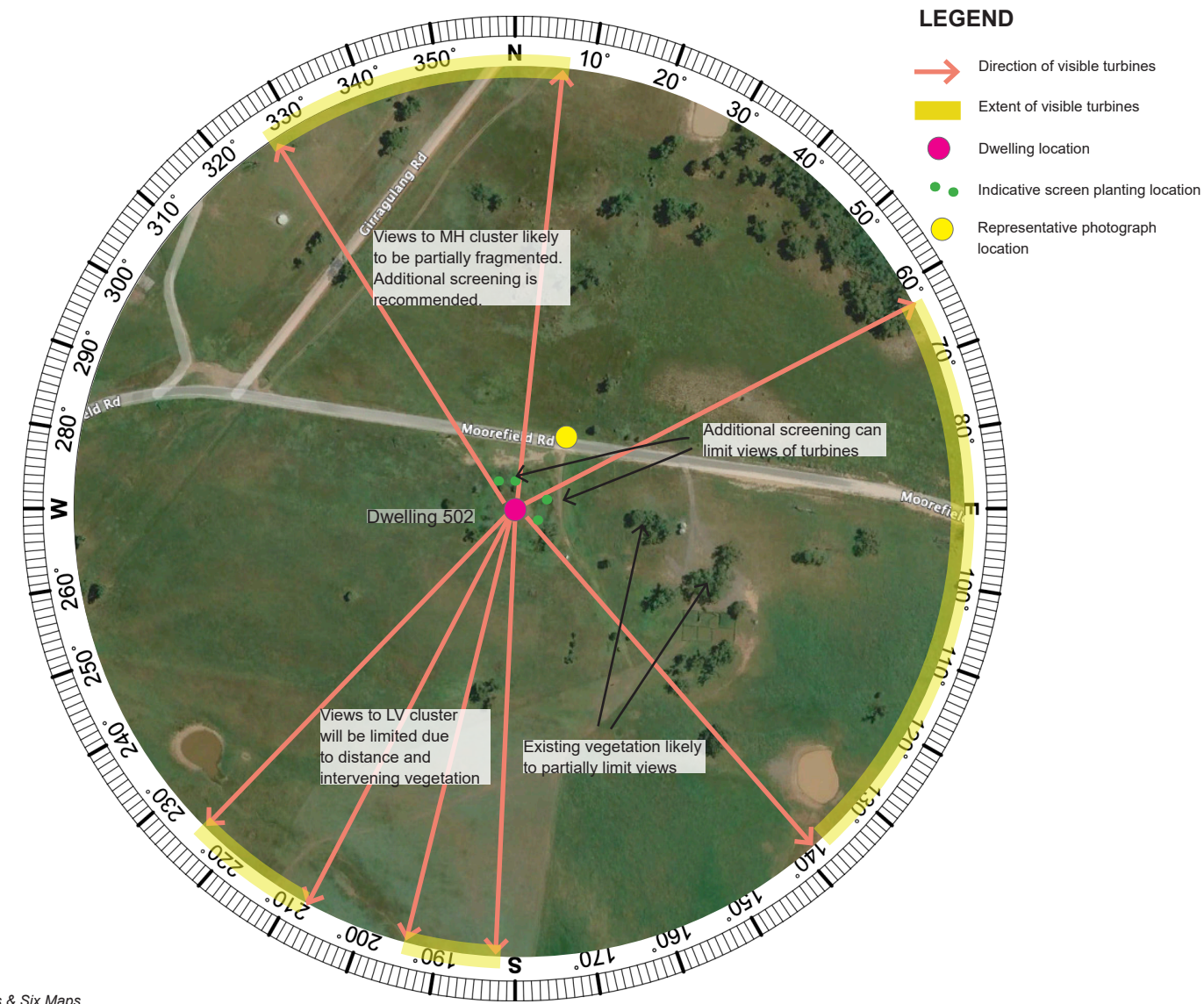


LEGEND

- Proposed turbine location
- Non-involved Dwelling
- 3,350 m from nearest turbine (Black Line)
- 4,950 m from nearest turbine (Blue Line)
- 8,000 m from nearest turbine
- 60° sector
- 60° sector with turbine



Aerial image sources: ESRI Topographic Maps & Six Maps

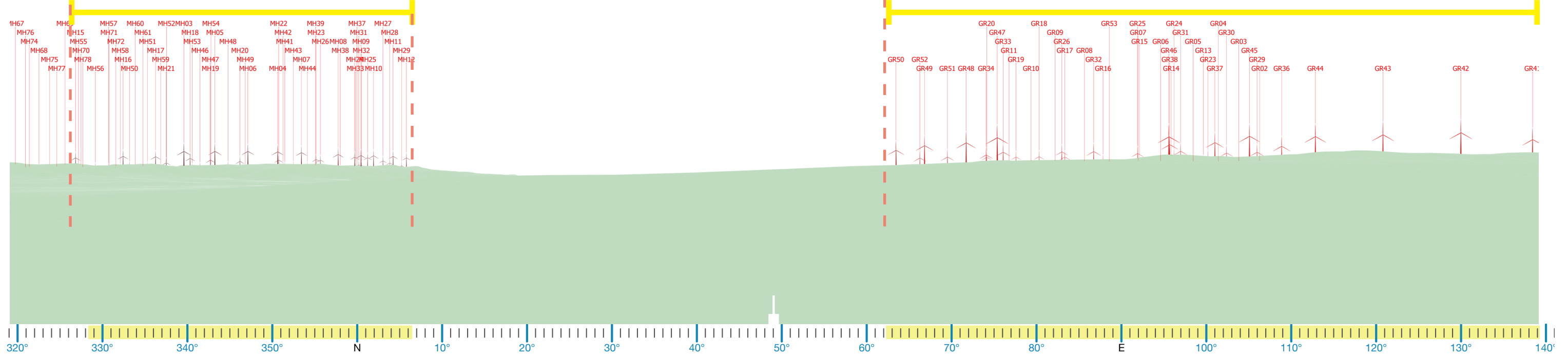


LEGEND

- Direction of visible turbines
- Extent of visible turbines
- Dwelling location
- Indicative screen planting location
- Representative photograph location

B9. Dwelling Assessment Dwelling 502

24 Turbines and 12 blade tips associated with the MH Cluster will be visible in the north. Existing scattered vegetation in dwelling foreground may partially fragment views. Additional planting to the north of the dwelling will further reduce visibility.

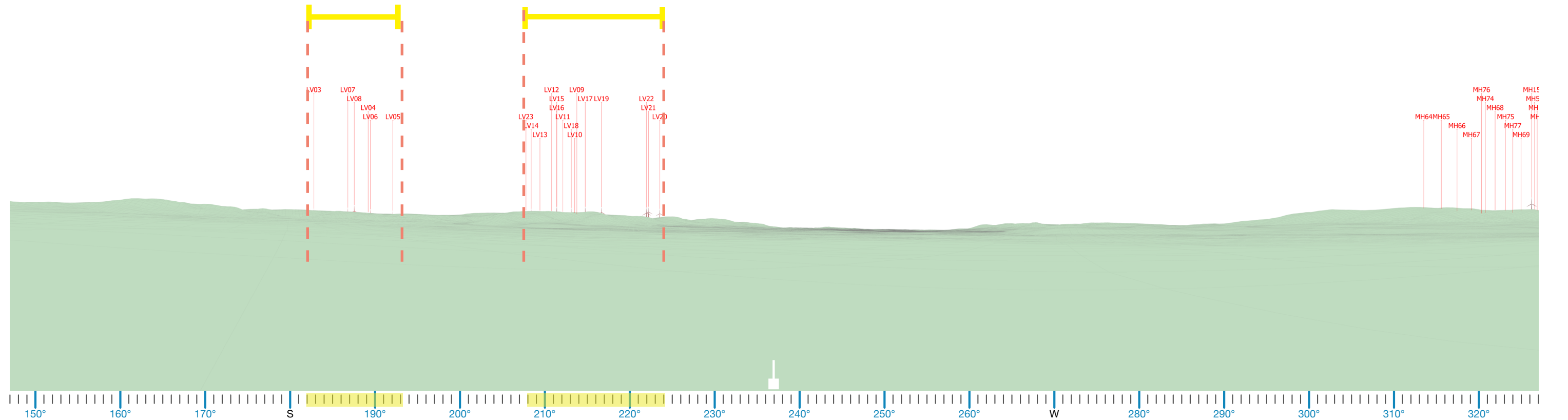


27 Turbines and 2 blade tips associated with the GR Cluster will be visible generally in the east. Existing scattered vegetation in dwelling foreground may partially fragment views. Additional planting to the east of the dwelling will further reduce visibility.

Wire Frame Diagram - 180 degree field of view - North

Turbines associated with LV cluster located in excess of 8 km from dwelling 502. Views are likely to be distant and screened by existing intervening elements such as vegetation.

Turbines associated with MH Cluster will be screened by topography



Wire Frame Diagram - 180 degree field of view - South

B9. Dwelling Assessment Dwelling 502



Existing view (photographed from Moorefield Road to the north of Dwelling Location 502)