

SOURCE DATA © NEW SOUTH WALES CROWN (SPATIAL SERVICES)

LEGEND

- SITE ENTRANCE
- SINGLE AXIS TRACKERS
- PROPOSED ACCESS ROAD
- PCU WITH HARDSTANDING
- PROPOSED SUBSTATION LOCATION AND UTILITY AREA
- PROPOSED BATTERY STORAGE AREA
- PROPOSED TEMPORARY CONSTRUCTION COMPOUND AND LAYDOWN
- BUILDING OCCUPANCY UNKNOWN
- NON-ASSOCIATED PROPERTY
- UNOCCUPIED BUILDING
- VEGETATION (DIGITISED FROM FIREBIRD MAP)
- NON PERENNIAL WATERCOURSE
- PERENNIAL STREAM WATERCOURSE
- DUAL CARRIAGEWAY
- STANDARD ROAD
- VEHICULAR TRACK
- ROAD BUFFER, 10m
- RAILWAY LINE
- OVERHEAD LINE (VOLTAGE UNKNOWN)
- 66 kV OVERHEAD LINE
- 132 kV OVERHEAD LINE
- TRANSMISSION LINE EASEMENT
- WATER PIPELINE EASEMENT (DIGITISED)
- GASLINE (DIGITISED FROM JEMIMA MAP)
- GASLINE BUFFER, 25m
- PROHIBITED AREA (GA 2006)
- SITE BOUNDARY



NOTES:
1. CONSTRAINTS HAVE BEEN DIGITISED FROM BACKGROUND MAPS. EXACT AREAS TO BE CONFIRMED.

3	SM	29/04/20	AD	29/04/20	PLANNING UPDATES
2	SM	020420	APPD	030420	NEW SITE BOUNDARY
1	SM	191219	AD	231219	FIRST ISSUE
ISSUE	DRAWN	DATE	APPD	DATE	REVISION NOTES
LAYOUT DWG	N/A			LAYOUT NO. INFRASTRUCTURE_05_20200327	

DRAWING NUMBER **04121-RES-IMP-DR-TE-001**

COORDS GDA 1994 MGA Zone 56

PURPOSE PRELIMINARY

SCALE 1:15,000 ORIGINAL PLOT SIZE A3

PROJECT TITLE
WHITTINGHAM SOLAR FARM

DRAWING TITLE
SITE LAYOUT AND CONSTRAINTS

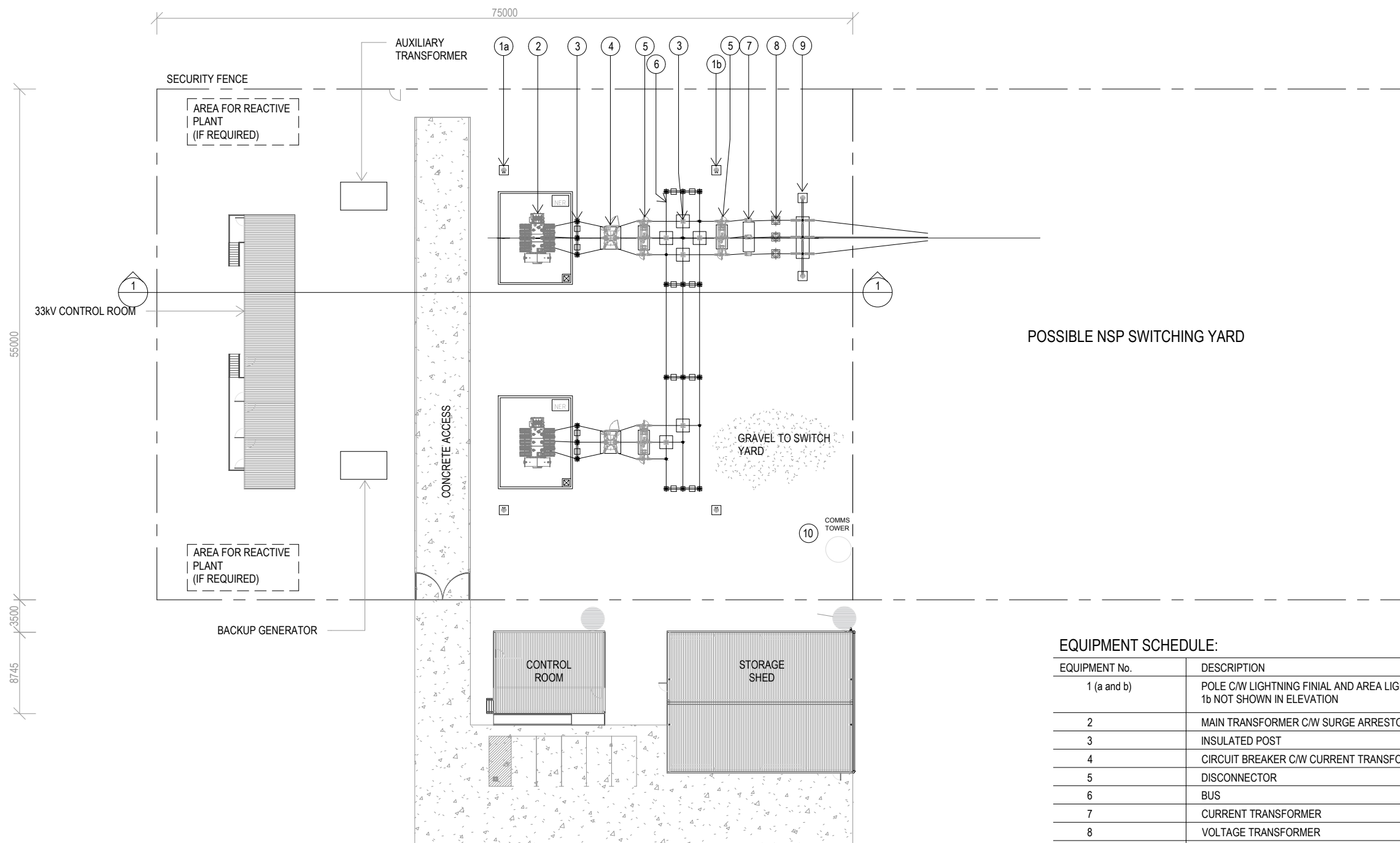
THIS DRAWING IS THE PROPERTY OF RES AUSTRALIA PTY LTD AND NO REPRODUCTION MAY BE MADE IN WHOLE OR IN PART WITHOUT PERMISSION

SUITE 6.01, LEVEL 6
165 WALKER STREET
NORTH SYDNEY, NSW 2060
EMAIL: info-australia@res-group.com



Sources: Esri, HERE, Garmin, USGS, Intermap, INCREMENT P, NRCan, Esri Japan, METI, Esri China (Hong Kong), Esri Korea, Esri (Thailand), NGCC, (c) OpenStreetMap contributors, and the GIS User Community

GENERAL ARRANGEMENT



SOLAR FARM

TECHNICAL FIGURE 7

INDICATIVE UTILITY FACILITY LAYOUT DOUBLE TRANSFORMER

NOTES:

1. INFRASTRUCTURE TO CONFORM TO AUSTRALIAN STANDARDS, BCA/NCC AND LOCAL GOVERNMENT REGULATIONS.
2. LAYOUT AND DIMENSIONS ARE INDICATIVE ONLY - SUBJECT TO DETAILED DESIGN AND NOT FOR CONSTRUCTION.
3. TELECOMMUNICATIONS TOWER DESIGN TO BE FINALISED THROUGH DISCUSSION WITH THE NETWORK PROVIDER.
4. DIMENSIONS ARE IN MILLIMETERS.

EQUIPMENT SCHEDULE:

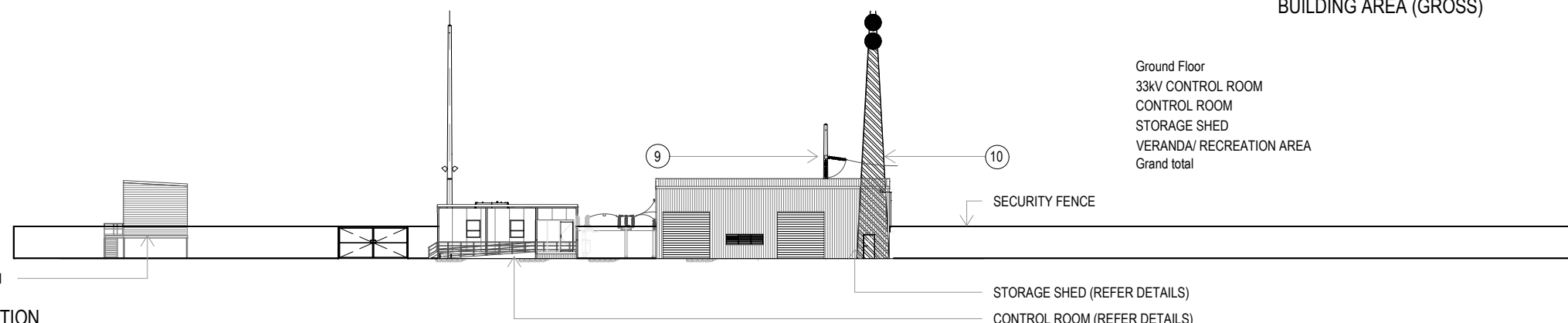
EQUIPMENT No.	DESCRIPTION
1 (a and b)	POLE C/W LIGHTNING FINIAL AND AREA LIGHTING 1b NOT SHOWN IN ELEVATION
2	MAIN TRANSFORMER C/W SURGE ARRESTORS
3	INSULATED POST
4	CIRCUIT BREAKER C/W CURRENT TRANSFORMERS
5	DISCONNECTOR
6	BUS
7	CURRENT TRANSFORMER
8	VOLTAGE TRANSFORMER
9	INCOMING LINE GANTRY WITH SURGE ARRESTOR BELOW
10	TELECOMMUNICATIONS TOWER

BUILDING AREA (GROSS)

Ground Floor	162 m ²
33kV CONTROL ROOM	72 m ²
CONTROL ROOM	300 m ²
STORAGE SHED	37 m ²
VERANDA/ RECREATION AREA	572 m ²
Grand total	

1 SITE PLAN

2 ELEVATION



PAGE 1 OF 2

INFRA DWG	N/A	APPD DATE	07-01-2019
LAYOUT DWG	N/A	T-LAYOUT NO.	N/A

DRAWING NUMBER
03707D4002-01

SCALE - N.T.S @A3

COORDS N/A

PLANNING PERMIT APPLICATION

THIS DRAWING IS THE PROPERTY OF RES AUSTRALIA PTY LTD AND NO REPRODUCTION MAY BE MADE IN WHOLE OR IN PART WITHOUT PERMISSION

SUITE 4, LEVEL 1
760 PACIFIC HWY
CHATSWOOD, NSW 2067
TEL: +61 (0)2 8440 7400
EMAIL: info-australia@res-group.com



GENERAL ARRANGEMENT SECTION



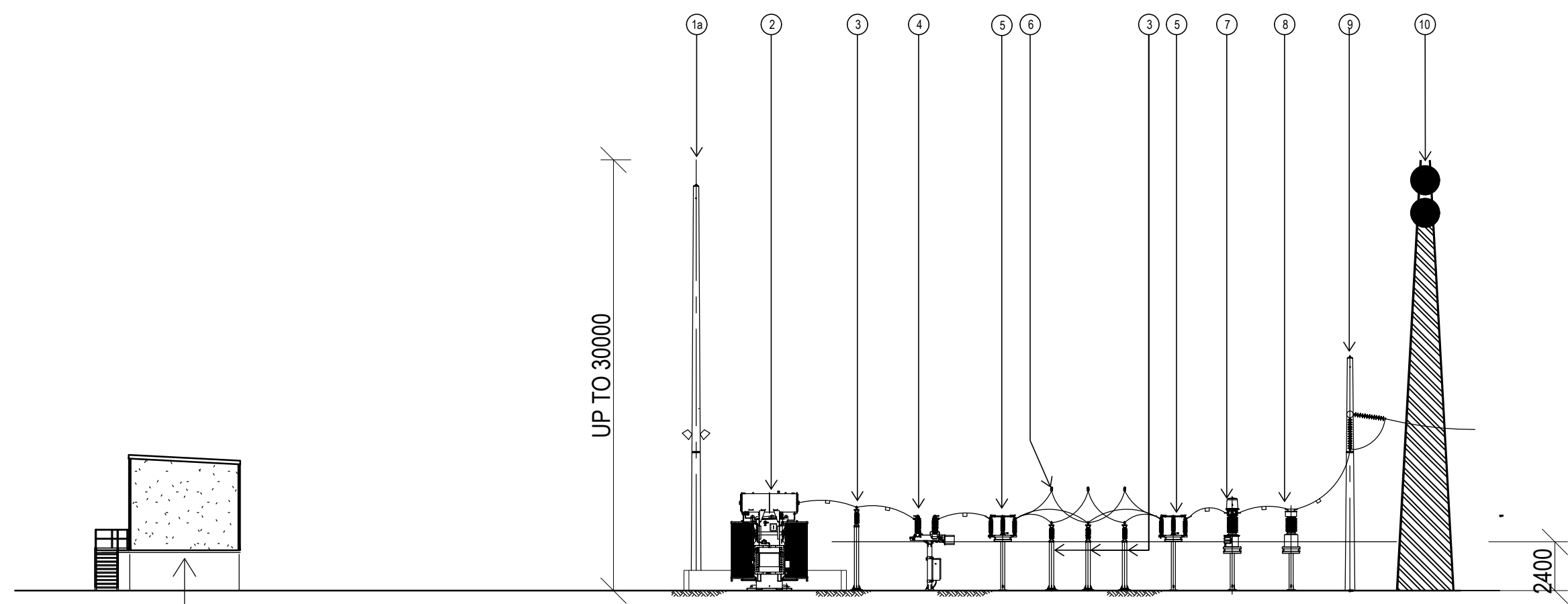
SOLAR FARM

TECHNICAL FIGURE 7

INDICATIVE UTILITY FACILITY LAYOUT DOUBLE TRANSFORMER

NOTES:

1. INFRASTRUCTURE TO CONFORM TO AUSTRALIAN STANDARDS, BCA/NCC AND LOCAL GOVERNMENT REGULATIONS.
2. LAYOUT AND DIMENSIONS ARE INDICATIVE ONLY - SUBJECT TO DETAILED DESIGN AND NOT FOR CONSTRUCTION.
3. TELECOMMUNICATIONS TOWER DESIGN TO BE FINALISED THROUGH DISCUSSION WITH THE NETWORK PROVIDER.
4. DIMENSIONS ARE IN MILLIMETERS.



33kV CONTROL ROOM

EQUIPMENT SCHEDULE:	
EQUIPMENT No.	DESCRIPTION
1 (a and b)	POLE C/W LIGHTNING FINIAL AND AREA LIGHTING 1b NOT SHOWN IN ELEVATION
2	MAIN TRANSFORMER C/W SURGE ARRESTORS
3	INSULATED POST
4	CIRCUIT BREAKER C/W CURRENT TRANSFORMERS
5	DISCONNECTOR
6	BUS
7	CURRENT TRANSFORMER
8	VOLTAGE TRANSFORMER
9	INCOMING LINE GANTRY WITH SURGE ARRESTOR BELOW
10	TELECOMMUNICATIONS TOWER

PAGE 2 OF 2

INFRA DWG	N/A	APPD DATE	07-01-2019
LAYOUT DWG	N/A	T-LAYOUT NO.	N/A

DRAWING NUMBER
03707D4002-01

SCALE - N.T.S @A3

COORDS N/A

PLANNING PERMIT APPLICATION

THIS DRAWING IS THE PROPERTY OF RES AUSTRALIA PTY LTD AND NO REPRODUCTION MAY BE MADE IN WHOLE OR IN PART WITHOUT PERMISSION

SUITE 4, LEVEL 1
760 PACIFIC HWY
CHATSWOOD, NSW 2067
TEL: +61 (0)2 8440 7400
EMAIL: info-australia@res-group.com

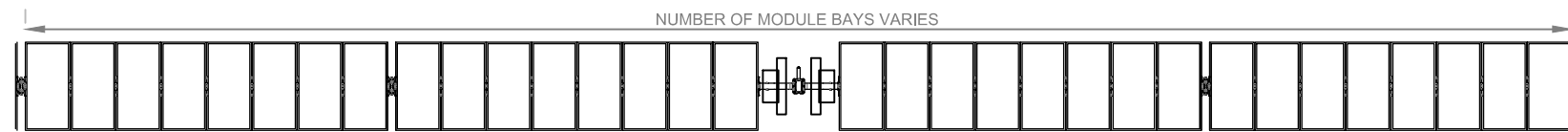




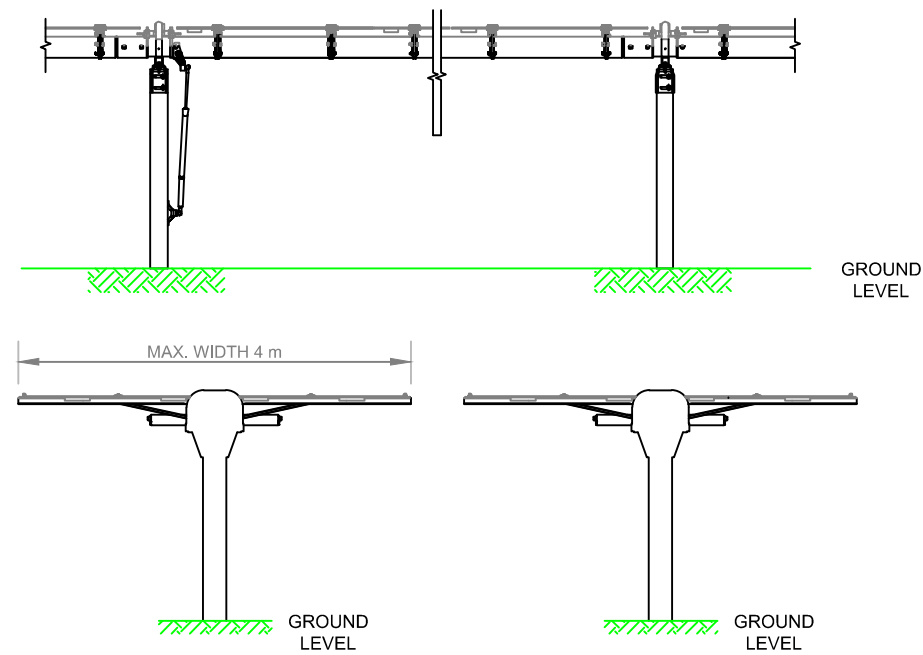
SOLAR FARM

TECHNICAL FIGURE 1
SINGLE AXIS TRACKER

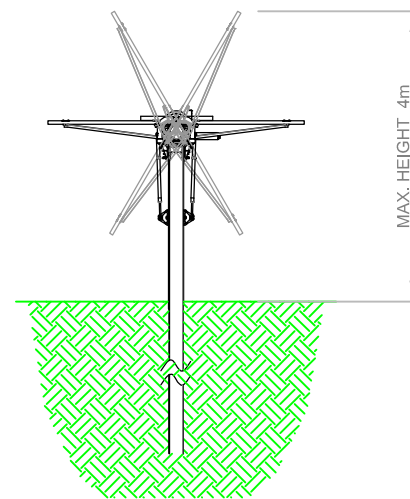
TYPICAL TRACKER ROW



TYPICAL SOLAR ARRAY TABLE
NORTH AND EASTERN ELEVATION



TYPICAL RACKING
MAXIMUM HEIGHT



NOTES:

- GROUND CLEARANCE WILL VARY AS REQUIRED BY TOPOGRAPHY;
- ROW LENGTH WILL VARY DEPENDING ON ELECTRICAL DESIGN;
- INDICATIVE ROW LENGTH COULD BE UP TO 100m;
- PV MODULES COULD BE INSTALLED IN PORTRAIT OR LANDSCAPE. ORIENTATION AND NUMBER WILL DEPEND ON THE MODULE AND TRACKER TYPE;
- THE PILE DEPTH SHALL BE DETERMINED FOLLOWING DETAILED GEOTECHNICAL SITE INVESTIGATION, TYPICALLY UP TO 2.4m. PILE HEIGHTS WILL CHANGE TO ACCOMMODATE THE GRADE, SUBJECT TO GEOTECHNICAL DESIGN;
- ACTUATOR TYPE AND LOCATION MAY VARY;
- THE FINAL CONFIGURATION MAY BE SUBJECT TO CHANGE IN THE DETAILED DESIGN PHASE, BUT WILL BE GENERALLY IN ACCORDANCE WITH THIS DRAWING;
- ACTUATOR TECHNOLOGY SUBJECT TO FINAL DESIGN.



INFRA DWG	N/A	APPD DATE	02/08/2017
LAYOUT DWG	N/A	T-LAYOUT NO.	N/A

DRAWING NUMBER
03707D2206-01

SCALE - N.T.S @A3

COORDS N/A

PLANNING PERMIT APPLICATION

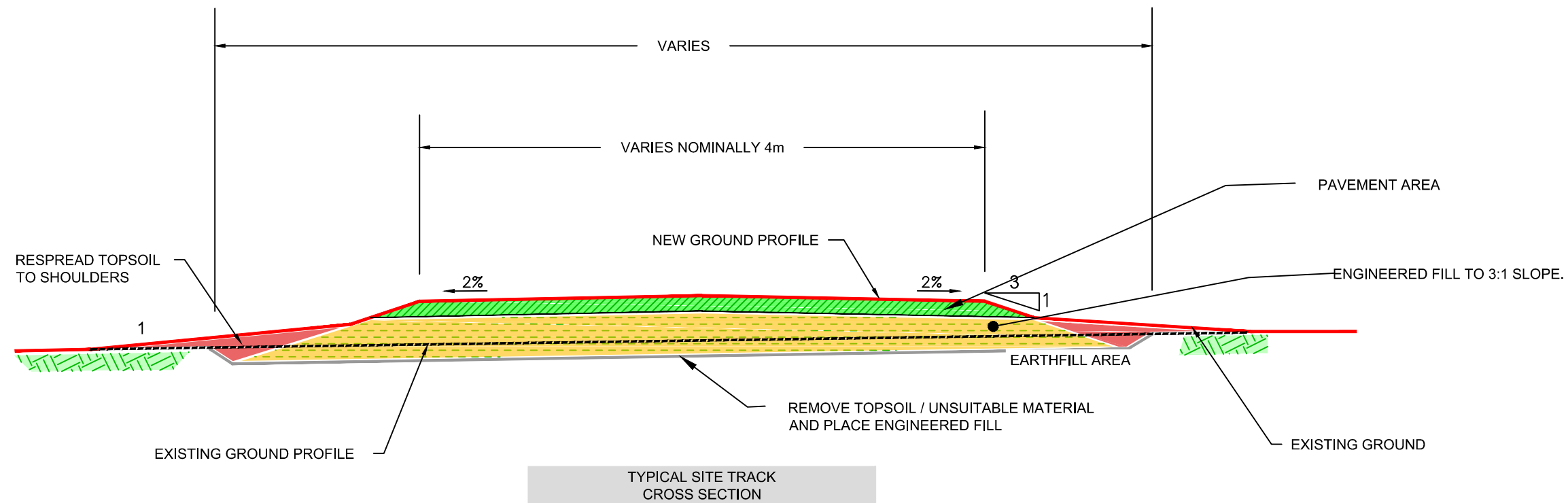
THIS DRAWING IS THE PROPERTY OF RES AUSTRALIA PTY LTD AND NO REPRODUCTION MAY BE MADE IN WHOLE OR IN PART WITHOUT PERMISSION

SUITE 4, LEVEL 1
760 PACIFIC HWY
CHATSWOOD, NSW 2067
TEL: +61 (0)2 8440 7400
EMAIL: info-australia@res-group.com





SOLAR FARM
 TECHNICAL FIGURE 2
 TYPICAL ACCESS
 TRACK DETAIL



LEGEND

	EXISTING GROUND PROFILE
	FINISHED GROUND PROFILE
	ENGINEERED FILL
	CRUSHED STONE PAVEMENT
	EXISTING GROUND
	RESPIREAD TOPSOIL

NOTES

GENERAL SITE ROAD DETAILS SHOWN, WHERE POSSIBLE AREAS OF FILL TO BE AVOIDED, ADDITIONAL WIDENING OF TRACK REQUIRED ON CORNERS AND PASSING BAYS TO ACCOMMODATE TRAFFIC;

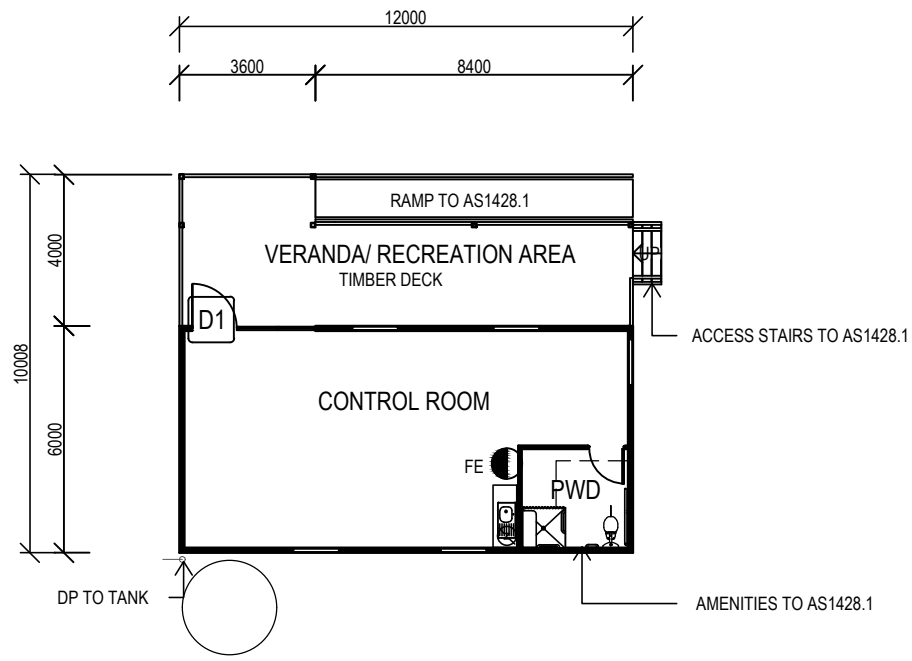
ADDITIONAL TEMPORARY TRACK WIDENING MAY BE REQUIRED FOR CRANE MOVEMENTS. WIDENED ZONES TO BE REMOVED AT THE DISCRETION OF THE REGULATING AUTHORITY;

TRACK WIDTH WIDENED LOCALLY TO PROVIDE PASSING BAYS & TURNING HEADS;

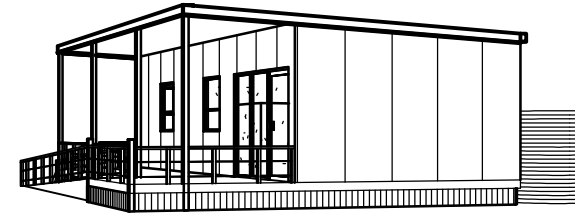
ALL MEASUREMENTS ARE INDICATIVE BUT FINAL DESIGN WILL BE CONSISTENT WITH WHAT IS SHOWN.

INFRA DWG	N/A	APPD DATE	02-08-2017
LAYOUT DWG	N/A	T-LAYOUT NO.	N/A
DRAWING NUMBER			
03707D3501-03			
SCALE - N.T.S			
COORDS			
N/A			
PLANNING PERMIT APPLICATION			
THIS DRAWING IS THE PROPERTY OF RES AUSTRALIA PTY LTD AND NO REPRODUCTION MAY BE MADE IN WHOLE OR IN PART WITHOUT PERMISSION			
SUITE 4, LEVEL 1 760 PACIFIC HWY CHATSWOOD, NSW 2067 TEL: +61 (0)2 8440 7400 EMAIL: info-australia@res-group.com			

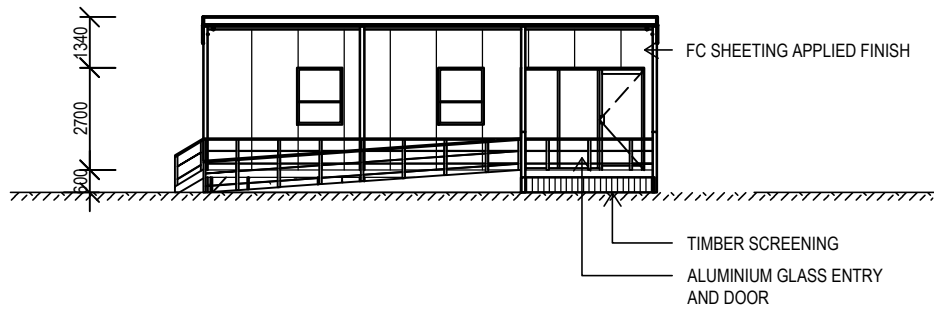
CONTROL ROOM LAYOUT



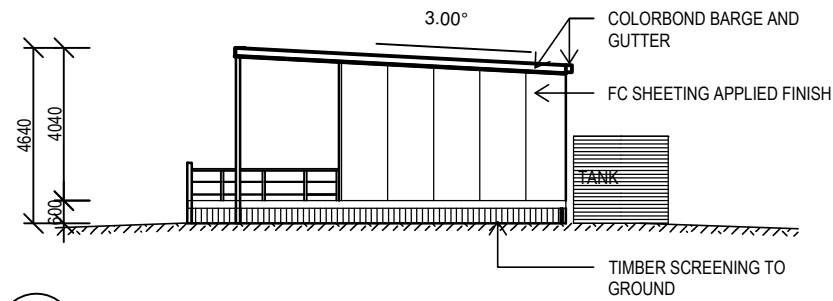
1 GROUND FLOOR PLAN
1:200



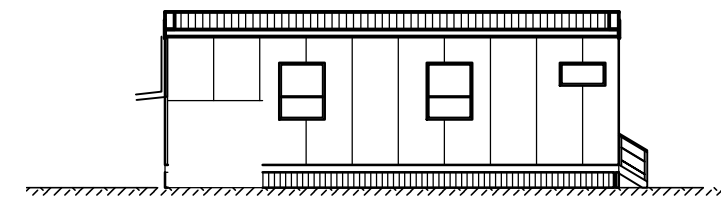
6 PERSPECTIVE



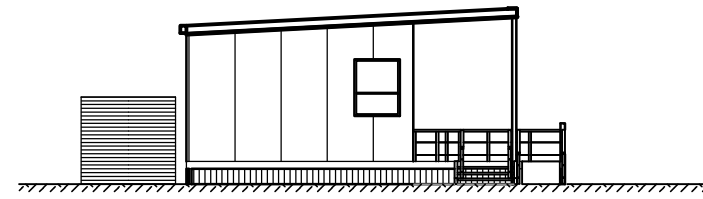
3 NORTH ELEVATION
1:200



2 WEST ELEVATION
1:200



4 SOUTH ELEVATION
1:200



5 EAST ELEVATION
1:200



SOLAR FARM

TECHNICAL FIGURE 8 TYPICAL CONTROL ROOM

ROOM SCHEDULE

NAME	FLOOR FINISH	AREA
GROUND FLOOR		
CONTROL ROOM	VINYL	60 m ²
PWD	VINYL	7 m ²
VERANDA/ RECREATION AREA	TIMBER DECK APPLIED FINISH	36 m ²
Grand total		103 m ²

NOTES:

- INFRASTRUCTURE TO CONFORM TO AUSTRALIAN STANDARDS, BCA/NCC AND LOCAL GOVERNMENT REGULATIONS;
- LAYOUT AND DIMENSIONS ARE INDICATIVE ONLY - SUBJECT TO DETAILED DESIGN AND NOT FOR CONSTRUCTION, BUT WILL BE GENERALLY IN ACCORDANCE WITH THIS DRAWING;
- DIMENSION ARE IN MILLIMETRES;
- LAYOUT AS SHOWN SUITED FOR $\leq 132\text{kV}$;
- FINISHES WILL NOT UNDULY CONTRAST WITH SURROUNDINGS.

PAGE 1 OF 2

INFRA DWG	N/A	APPD DATE	06-11-2018
LAYOUT DWG	N/A	T-LAYOUT NO.	N/A

DRAWING NUMBER
03707D4003-03

SCALE - N.T.S. @A3

COORDS N/A

PLANNING PERMIT APPLICATION

THIS DRAWING IS THE PROPERTY OF RES AUSTRALIA PTY LTD AND NO REPRODUCTION MAY BE MADE IN WHOLE OR IN PART WITHOUT PERMISSION

SUITE 4, LEVEL 1
760 PACIFIC HWY
CHATSWOOD, NSW 2067
TEL: +61 (0)2 8440 7400
EMAIL: info-australia@res-group.com

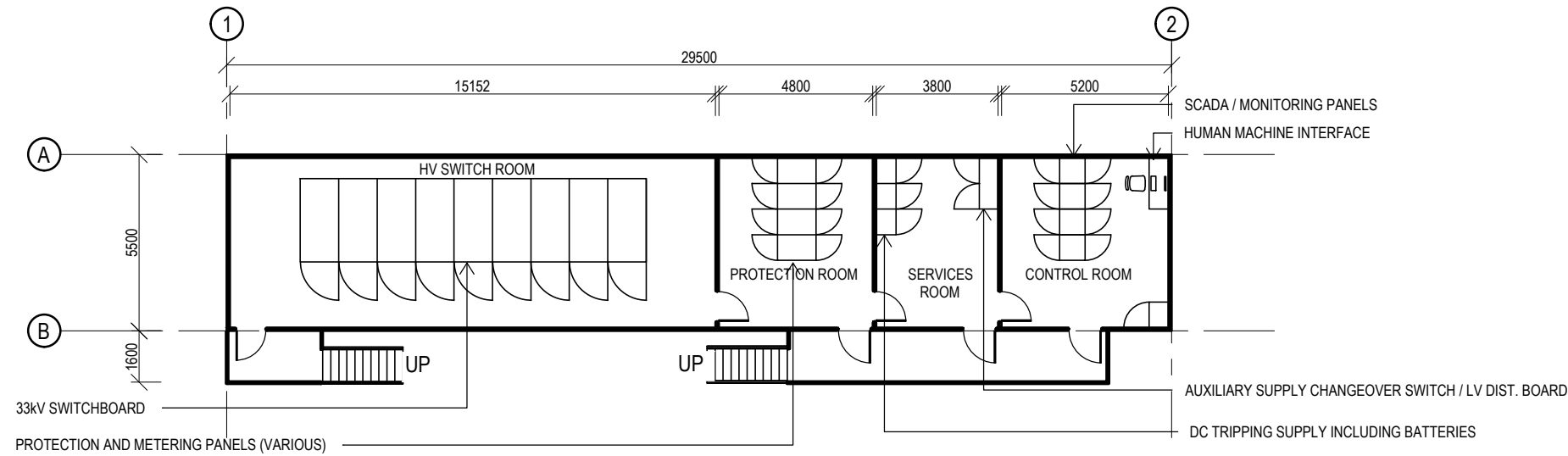


SWITCHROOM DETAIL



SOLAR FARM

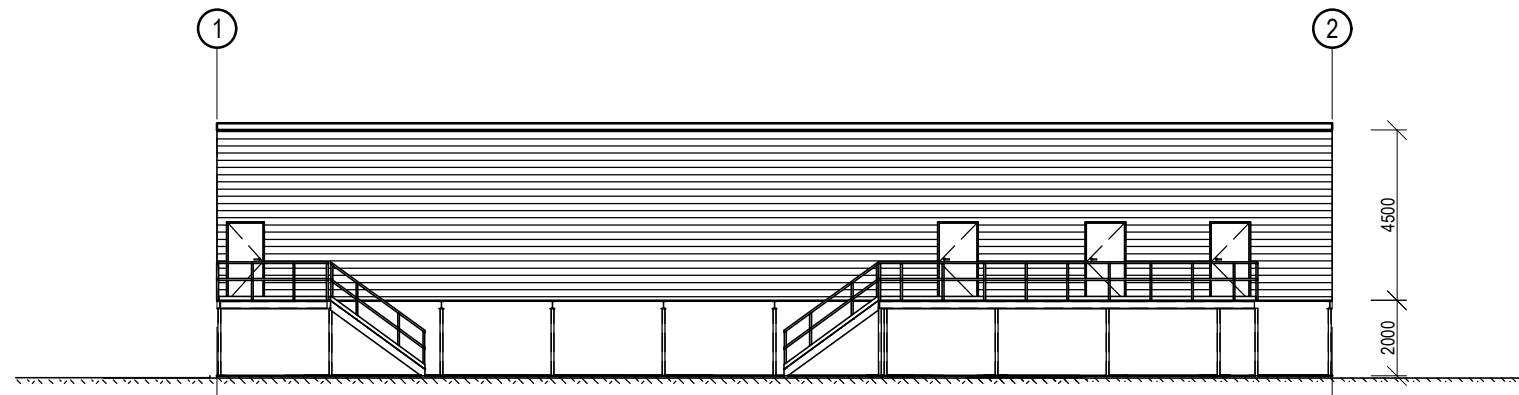
TECHNICAL FIGURE 8 TYPICAL CONTROL ROOM



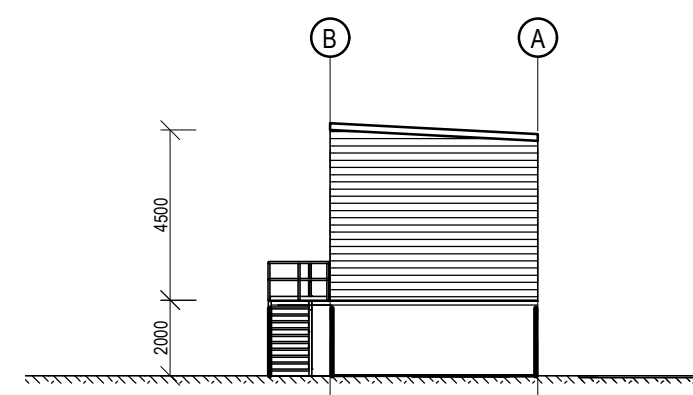
NOTES:

1. INFRASTRUCTURE TO CONFORM TO AUSTRALIAN STANDARDS, BCA/NCC AND LOCAL GOVERNMENT REGULATIONS;
2. LAYOUT AND DIMENSION ARE INDICATIVE ONLY - SUBJECT TO DETAILED DESIGN AND NOT FOR CONSTRUCTION, BUT WILL BE GENERALLY IN ACCORDANCE WITH THIS DRAWING;
3. DIMENSION ARE IN MILLIMETRES;
4. LAYOUT AS SHOWN SUITED FOR $\leq 132\text{kV}$;
5. FINISHES WILL NOT UNDULY CONTRAST WITH SURROUNDINGS;
6. COMMS TOWER DESIGN TO BE FINALISED THROUGH DISCUSSION WITH NETWORK PROVIDER.

1 FLOOR PLAN
1:200



2 ELEVATION
1:200



3 ELEVATION
1:200

PAGE 2 OF 2

INFRA DWG	N/A	APPD DATE	06-11-2018
LAYOUT DWG	N/A	T-LAYOUT NO.	N/A

DRAWING NUMBER
03707D4003-03

SCALE - N.T.S. @A3

COORDS N/A

PLANNING PERMIT APPLICATION

THIS DRAWING IS THE PROPERTY OF RES AUSTRALIA PTY LTD AND NO REPRODUCTION MAY BE MADE IN WHOLE OR IN PART WITHOUT PERMISSION

SUITE 4, LEVEL 1
760 PACIFIC HWY
CHATSWOOD, NSW 2067
TEL: +61 (0)2 8440 7400
EMAIL: info-australia@res-group.com





SOLAR FARM

FIGURE 10
OPTION 1 - BUILDING SOLUTION

TYPICAL ENERGY STORAGE
SOLUTION 60m X 70m



LEGEND

- POWER CONVERSION SYSTEM - PCS
- TRANSFORMER
- AUXILIARY TRANSFORMER
- BATTERY RACK
- STORAGE AREA

SHEET 1 OF 2

NOTES

1. STORAGE SITE BOUNDARY APPROXIMATE 0.42 HAS;
2. SUBJECT TO FINAL DESIGN WHICH WILL BE GENERALLY IN ACCORDANCE WITH THIS DRAWING;
3. SITE TO BE ENCLOSED AROUND PERIMETER BY 2m SECURITY FENCING;
4. CAR PARK FOR UP TO SIX VEHICLES TO BE PROVIDED;
5. SUBJECT TO FINAL APPROVAL DESIGN;
6. ALL DIMENSIONS ARE APPROXIMATE;
10. ALL CABLING TO BE UNDERGROUND OR ON CABLE TRAYS;
11. FOUNDATIONS ARE INDICATIVE AND SUBJECT TO ACTUAL ELECTRICAL EQUIPMENT DETAILS;
12. MAXIMUM BUILDING DIMENSIONS W=22m, L=35m, H=5m.

GROSS FLOOR AREA	770 m ²
BUILDING FINISH FLOOR LEVEL	FINISHED FLOOR LEVEL TO BE NO MORE THAN 500mm ABOVE EXISTING GROUND LEVEL HIGH POINT
ROOF SLOPE	ROOF SLOPE TO BE IN ACCORDANCE WITH ROOFING MATERIAL MANUFACTURES AND OTHER BUILDING CODE REQUIREMENTS
BUILDING COLOUR	BUILDING COLOUR SHALL BE TWO TONED AS FOLLOWS – TONE 1 (ROOF, GUTTERING, FACIA, DOWNPIPES AND DOORS), TONE 2 (WALLS). SUBTLE AND COMPLEMENTARY COLOURS FOR EACH TONE SHALL BE SELECTED FROM THE COLOURBOND CLASSIC RANGE (OR SIMILAR)
PAVEMENT	EXTERNAL PAVEMENTS MAY BE EITHER GRAVELLED OR SEALED SUBJECT TO FINAL DESIGN REQUIREMENTS

INFRA DWG	N/A	APPD DATE	22-12-2016
LAYOUT DWG	N/A	T-LAYOUT NO.	N/A

DRAWING NUMBER
03707D3505-01

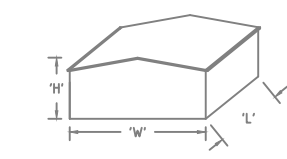
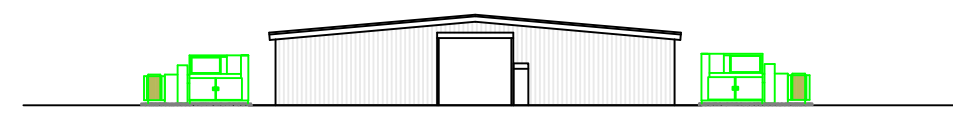
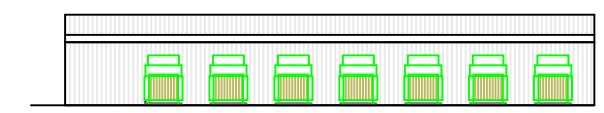
SCALE - N.T.S A3

COORDS N/A

PLANNING PERMIT APPLICATION

THIS DRAWING IS THE PROPERTY OF RES AUSTRALIA PTY LTD AND NO REPRODUCTION MAY BE MADE IN WHOLE OR IN PART WITHOUT PERMISSION

SUITE 4, LEVEL 1
760 PACIFIC HWY
CHATSWOOD, NSW 2067
TEL: +61 (0)2 8440 7400
EMAIL: info-australia@res-group.com

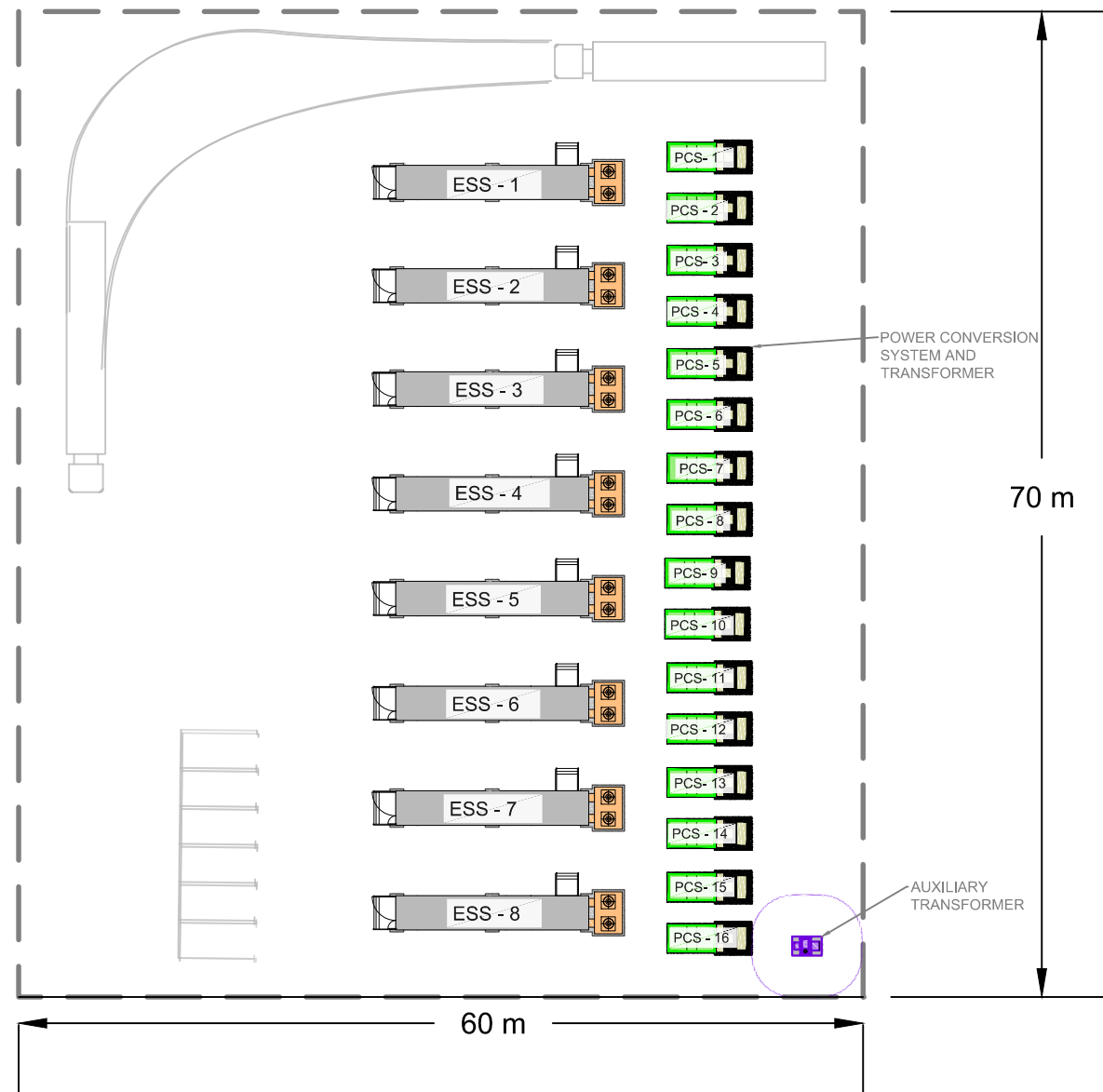




SOLAR FARM

FIGURE 10
OPTION 2 - CONTAINERS

TYPICAL ENERGY STORAGE
SOLUTION 60m X 70m



LEGEND

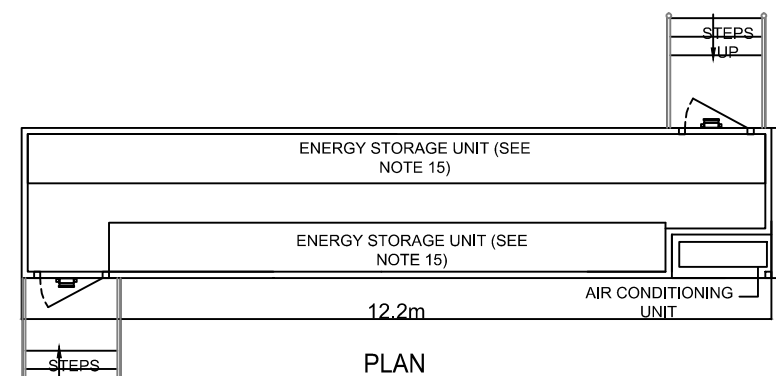
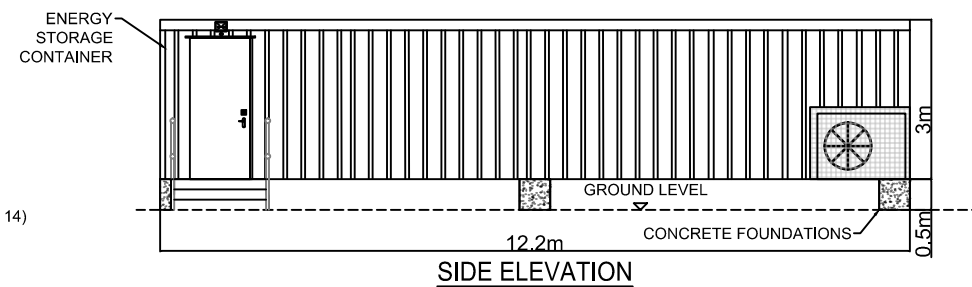
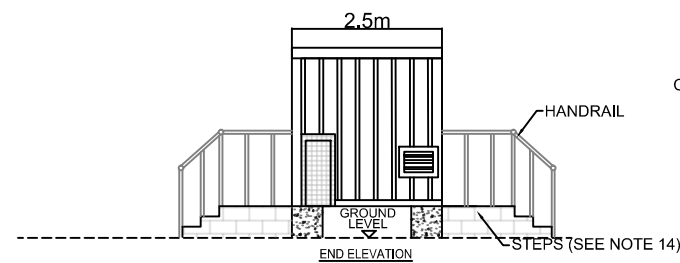
- POWER CONVERSION SYSTEM - PCS
- TRANSFORMER
- AUXILIARY TRANSFORMER
- BATTERY RACK
- STORAGE AREA
- DOOR
- PASSIVE INFRARED LIGHTING (PLAN)
- PASSIVE INFRARED LIGHTING (ELEVATION)

SHEET 2 OF 2

NOTES

1. STORAGE SITE BOUNDARY APPROXIMATE 1 HAS;
2. SUBJECT TO FINAL DESIGN WHICH WILL BE GENERALLY IN ACCORDANCE WITH THIS DRAWING;
3. SITE TO BE ENCLOSED AROUND PERIMETER BY 2m SECURITY FENCING;
4. CAR PARK FOR UP TO SIX VEHICLES TO BE PROVIDED;
5. SUBJECT TO FINAL APPROVAL DESIGN;
6. ALL DIMENSIONS ARE APPROXIMATE;
10. ALL CABLING TO BE UNDERGROUND OR ON CABLE TRAYS;
11. FOUNDATIONS ARE INDICATIVE AND SUBJECT TO ACTUAL ELECTRICAL EQUIPMENT DETAILS;
12. DOOR AND STEPS POSITIONS ARE INDICATIVE AND SUBJECT TO DETAILED DESIGN;
13. APPROXIMATE FINISHED FLOOR LEVEL 0.5m ABOVE EXISTING GROUND LEVEL;
14. STEPS TO BE EITHER CONSTRUCTED ON SITE FROM MASS CONCRETE OR MASONRY BLOCKS OR PREFABRICATED OFF SITE AND INSTALLED ON SITE FOLLOWING POSITIONING OF THE STORAGE UNIT;
15. THE LOCATION AND SIZE OF ENERGY STORAGE UNIT WITHIN THE CONTAINER TO BE DETERMINED AT DETAILED DESIGN STAGE;
16. EXTERNAL COLOUR OF ENERGY STORAGE UNIT TO BE AGREED;
17. FIRE SUPPRESSION SYSTEM INTERNAL TO CONTAINER.

TYPICAL ENERGY STORAGE CONTAINER



INFRA DWG	N/A	APPD DATE	22-12-2016
LAYOUT DWG	N/A	T-LAYOUT NO.	N/A

DRAWING NUMBER
03707D3505-01

SCALE - N.T.S A3

COORDS N/A

PLANNING PERMIT APPLICATION

THIS DRAWING IS THE PROPERTY OF RES AUSTRALIA PTY LTD AND NO REPRODUCTION MAY BE MADE IN WHOLE OR IN PART WITHOUT PERMISSION

SUITE 4, LEVEL 1
760 PACIFIC HWY
CHATSWOOD, NSW 2067
TEL: +61 (0)2 8440 7400
EMAIL: info-australia@res-group.com





SOLAR FARM

FIGURE 10
OPTION 1 - BUILDING

TYPICAL ENERGY
STORAGE SOLUTION

LEGEND

- POWER CONVERSION SYSTEM - PCS
- TRANSFORMER
- AUXILIARY TRANSFORMER
- BATTERY RACK
- STORAGE AREA

SHEET 1 OF 2

NOTES

1. STORAGE SITE BOUNDARY APPROXIMATE 1 HAS;
2. SUBJECT TO FINAL DESIGN WHICH WILL BE GENERALLY IN ACCORDANCE WITH THIS DRAWING;
3. SITE TO BE ENCLOSED AROUND PERIMETER BY 2m SECURITY FENCING;
4. CAR PARK FOR UP TO SIX VEHICLES TO BE PROVIDED;
5. SUBJECT TO FINAL APPROVAL DESIGN;
6. ALL DIMENSIONS ARE APPROXIMATE;
10. ALL CABLING TO BE UNDERGROUND AND OR ON CABLING TRAY;
11. FOUNDATIONS ARE INDICATIVE AND SUBJECT TO ACTUAL ELECTRICAL EQUIPMENT DETAILS;
12. MAXIMUM BUILDING DIMENSIONS W=22m, L=63m, H=5m.

GROSS FLOOR AREA	1386 m ²
BUILDING FINISH FLOOR LEVEL	FINISHED FLOOR LEVEL TO BE NO MORE THAN 500mm ABOVE EXISTING GROUND LEVEL HIGH POINT
ROOF SLOPE	ROOF SLOPE TO BE IN ACCORDANCE WITH ROOFING MATERIAL MANUFACTURES AND OTHER BUILDING CODE REQUIREMENTS
BUILDING COLOUR	BUILDING COLOUR SHALL BE TWO TONED AS FOLLOWS - TONE 1 (ROOF, GUTTERING, FACIA, DOWNPIPES AND DOORS), TONE 2 (WALLS). SUBTLE AND COMPLEMENTARY COLOURS FOR EACH TONE SHALL BE SELECTED FROM THE COLOURBOND CLASSIC RANGE (OR SIMILAR)
PAVEMENT	EXTERNAL PAVEMENTS MAY BE EITHER GRAVELLED OR SEALED SUBJECT TO FINAL DESIGN REQUIREMENTS

INFRA DWG	N/A	APPD DATE	22-12-2016
LAYOUT DWG	N/A	T-LAYOUT NO.	N/A

DRAWING NUMBER
03707D3504-01

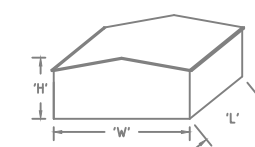
SCALE - N.T.S A3

COORDS N/A

PLANNING PERMIT APPLICATION

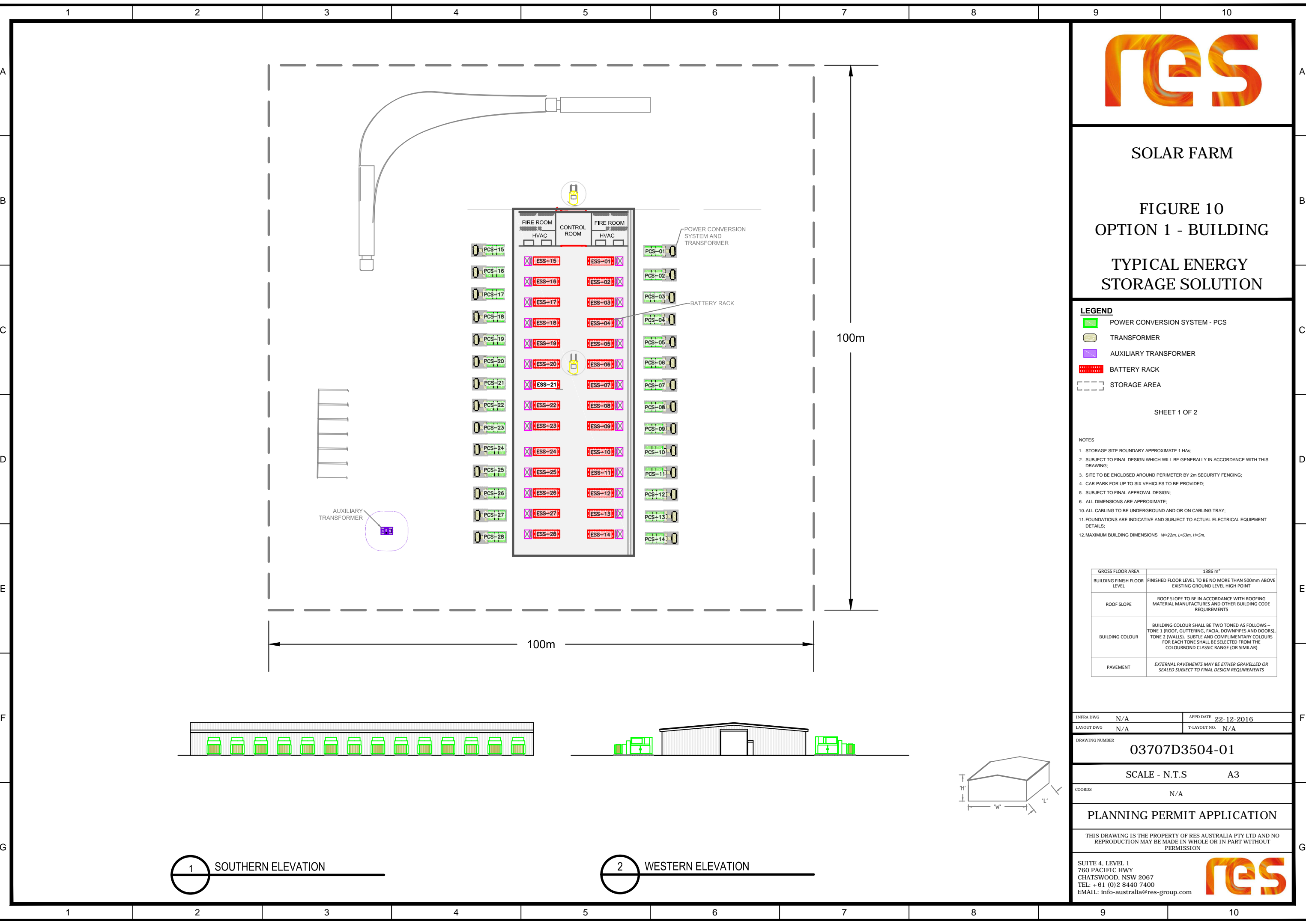
THIS DRAWING IS THE PROPERTY OF RES AUSTRALIA PTY LTD AND NO REPRODUCTION MAY BE MADE IN WHOLE OR IN PART WITHOUT PERMISSION

SUITE 4, LEVEL 1
760 PACIFIC HWY
CHATSWOOD, NSW 2067
TEL: +61 (0)2 8440 7400
EMAIL: info-australia@res-group.com



1 SOUTHERN ELEVATION

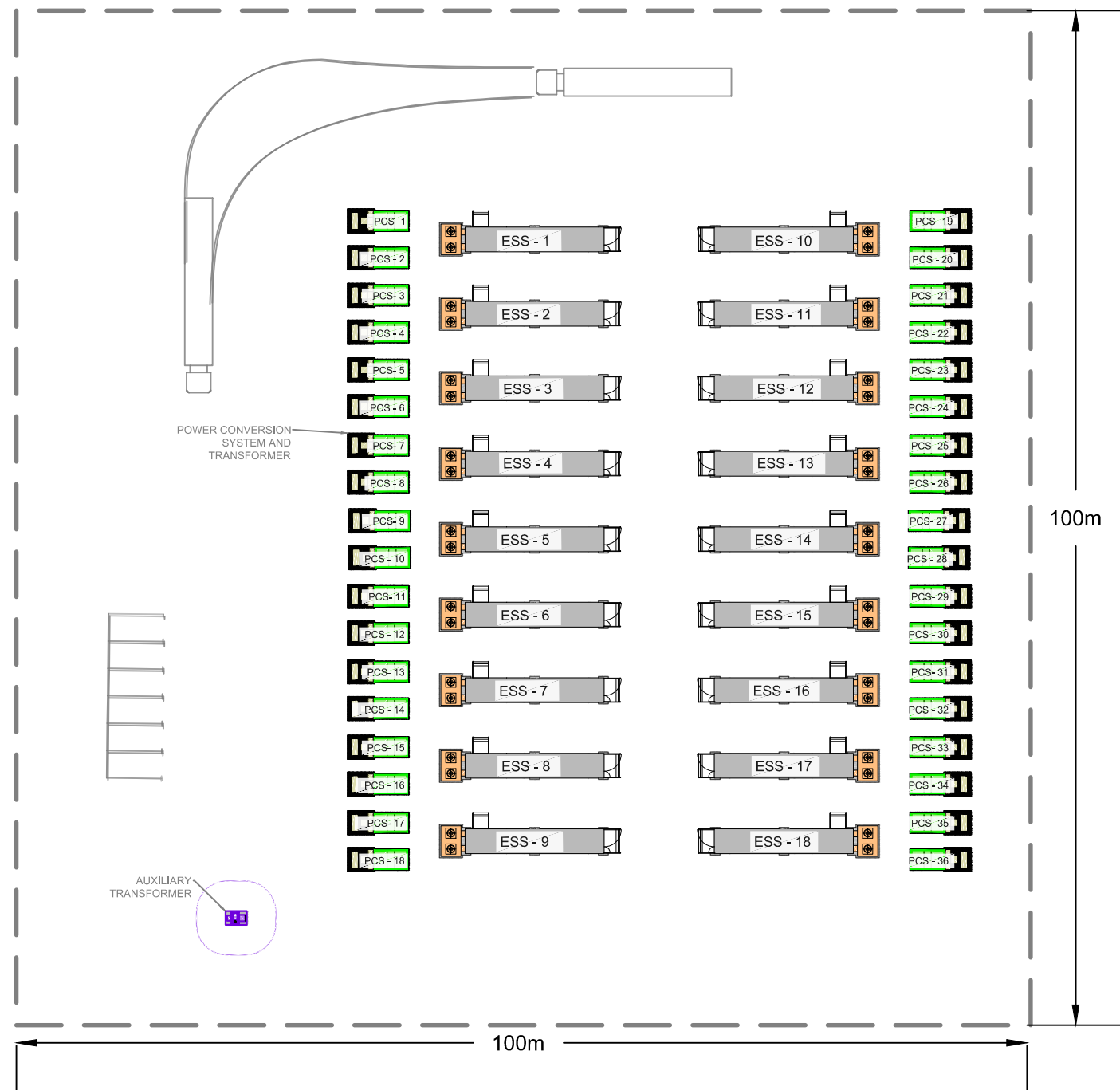
2 WESTERN ELEVATION





SOLAR FARM

FIGURE 10
OPTION 2 - CONTAINERS
TYPICAL ENERGY
STORAGE SOLUTION



LEGEND

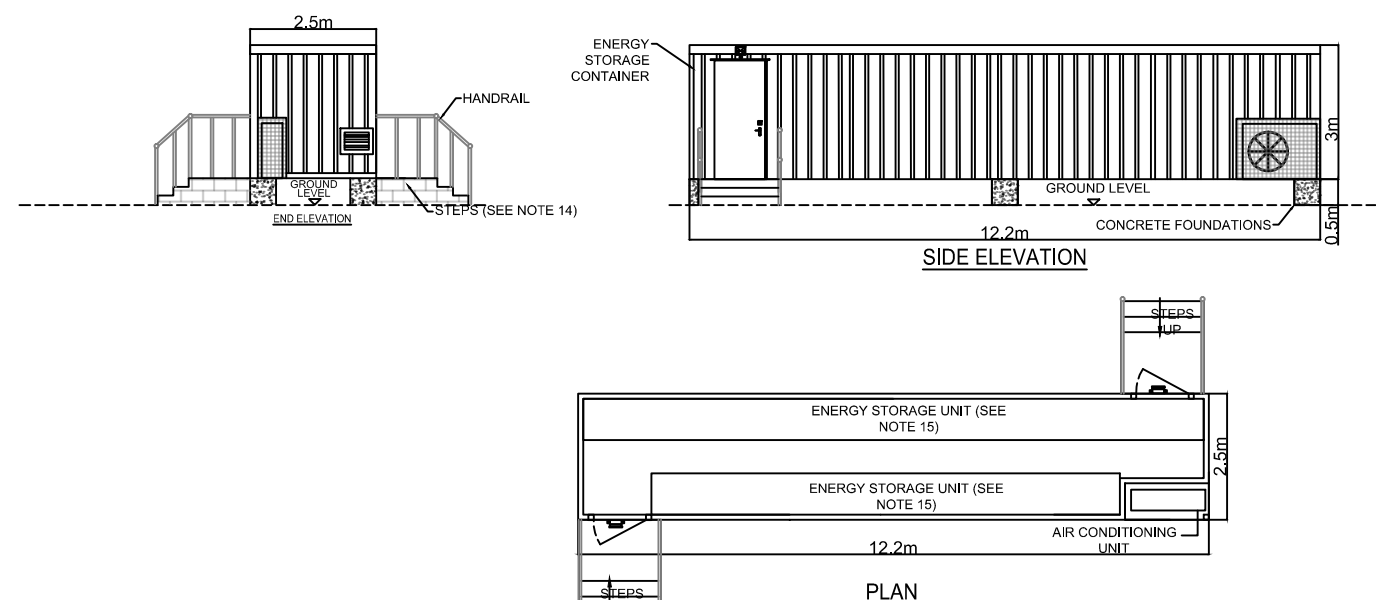
- POWER CONVERSION SYSTEM - PCS
- TRANSFORMER
- AUXILIARY TRANSFORMER
- BATTERY RACK
- STORAGE AREA
- DOOR
- PASSIVE INFRARED LIGHTING (PLAN)
- PASSIVE INFRARED LIGHTING (ELEVATION)

SHEET 2 OF 2

NOTES

1. STORAGE SITE BOUNDARY APPROXIMATE 1 HAS;
2. SUBJECT TO FINAL DESIGN WHICH WILL BE GENERALLY IN ACCORDANCE WITH THIS DRAWING;
3. SITE TO BE ENCLOSED AROUND PERIMETER BY 2m SECURITY FENCING;
4. CAR PARK FOR UP TO SIX VEHICLES TO BE PROVIDED;
5. SUBJECT TO FINAL APPROVAL DESIGN;
6. ALL DIMENSIONS ARE APPROXIMATE;
10. ALL CABLING TO BE UNDERGROUND OR ON CABLING TRAY;
11. FOUNDATIONS ARE INDICATIVE AND SUBJECT TO ACTUAL ELECTRICAL EQUIPMENT DETAILS;
12. DOOR AND STEPS POSITIONS ARE INDICATIVE AND SUBJECT TO DETAILED DESIGN;
13. APPROXIMATE FINISHED FLOOR LEVEL 0.5m ABOVE EXISTING GROUND LEVEL;
14. STEPS TO BE EITHER CONSTRUCTED ON SITE FROM MASS CONCRETE OR MASONRY BLOCKS OR PREFABRICATED OFF SITE AND INSTALLED ON SITE FOLLOWING POSITIONING OF THE STORAGE UNIT;
15. THE LOCATION AND SIZE OF ENERGY STORAGE UNIT WITHIN THE CONTAINER TO BE DETERMINED AT DETAILED DESIGN STAGE;
16. EXTERNAL COLOUR OF ENERGY STORAGE UNIT TO BE AGREE;
17. FIRE SUPPRESSION SYSTEM INTERNAL TO CONTAINER.

TYPICAL ENERGY STORAGE CONTAINER



INFRA DWG	N/A	APPD DATE	22-12-2016
LAYOUT DWG	N/A	T-LAYOUT NO.	N/A

DRAWING NUMBER
03707D3504-01

SCALE - N.T.S A3

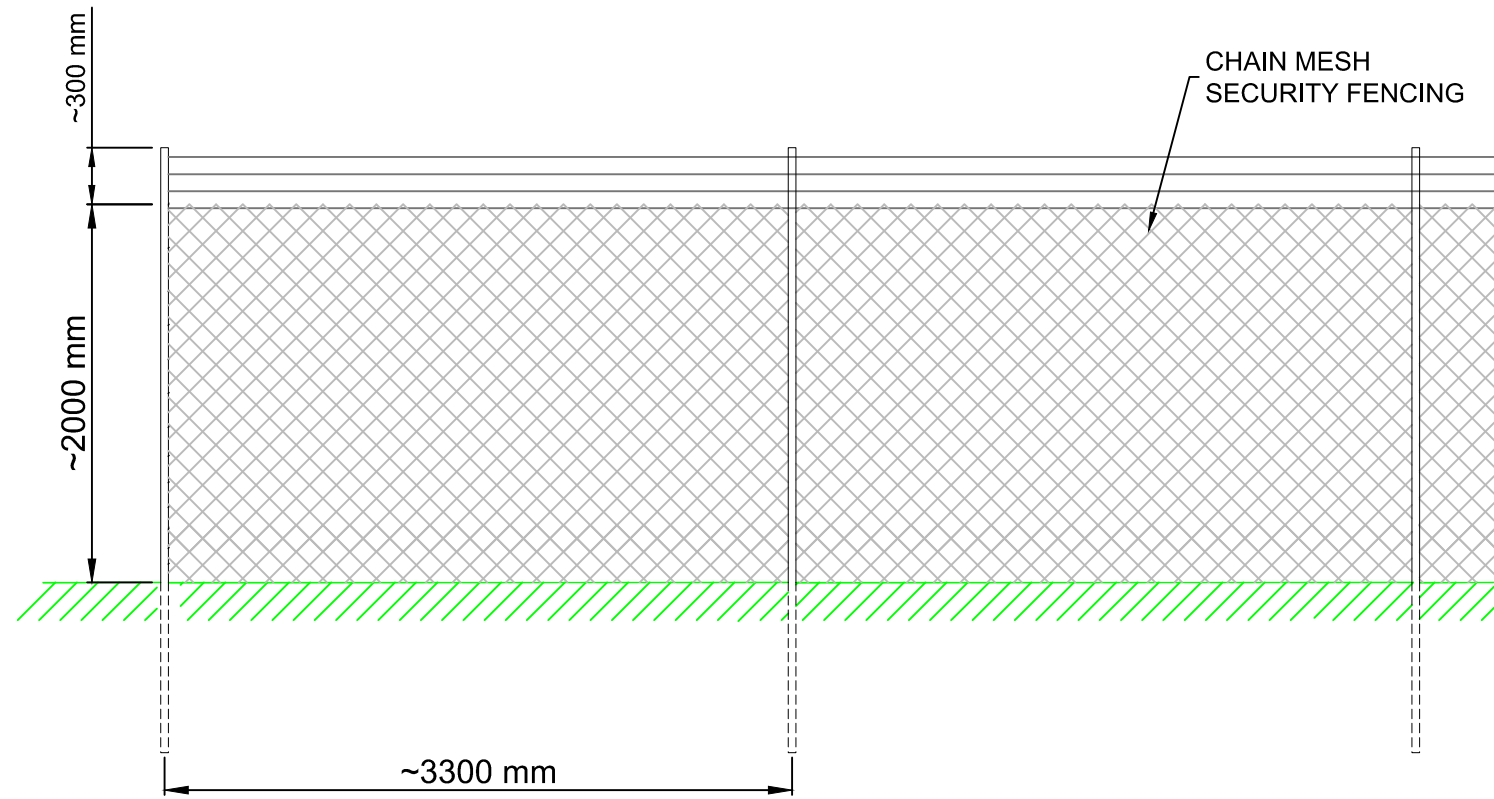
COORDS N/A

PLANNING PERMIT APPLICATION

THIS DRAWING IS THE PROPERTY OF RES AUSTRALIA PTY LTD AND NO REPRODUCTION MAY BE MADE IN WHOLE OR IN PART WITHOUT PERMISSION

SUITE 4, LEVEL 1
760 PACIFIC HWY
CHATSWOOD, NSW 2067
TEL: +61 (0)2 8440 7400
EMAIL: info-australia@res-group.com





SOLAR FARM

TECHNICAL FIGURE 5

TYPICAL FENCE DETAIL

NOTES:

1. DIMENSIONS ARE INDICATIVE AND SUBJECT TO DETAILED DESIGN, BUT WILL BE GENERALLY IN ACCORDANCE WITH THIS DRAWING;
2. SECURITY FENCE TO BE INSTALLED IF REQUIRED BY INSURERS.

INFRA DWG	N/A	APPD DATE	01-08-18
LAYOUT DWG	N/A	T-LAYOUT NO.	N/A

DRAWING NUMBER
03707D2204-03

SCALE - N.T.S A3

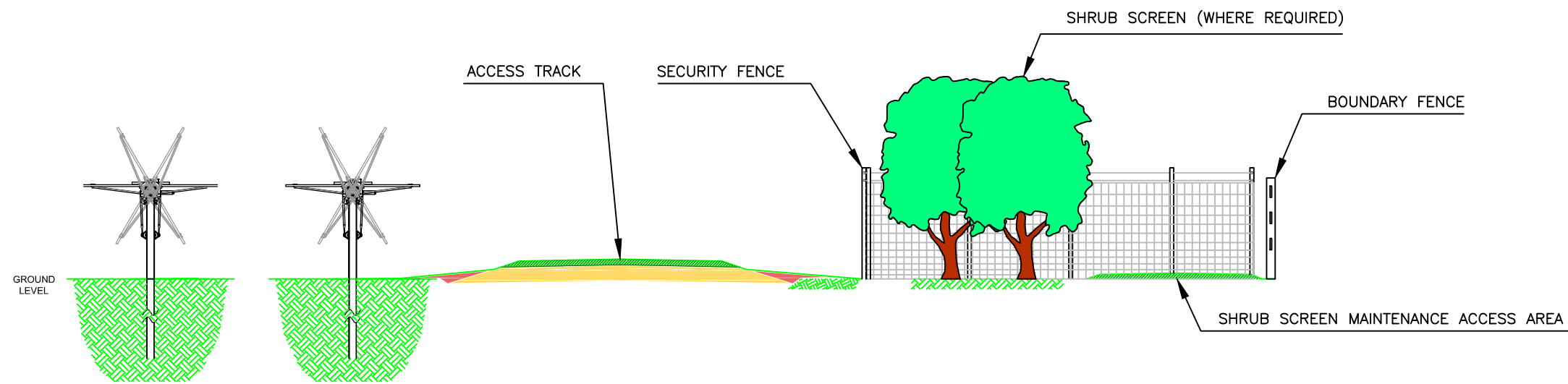
COORDS N/A

PLANNING PERMIT APPLICATION

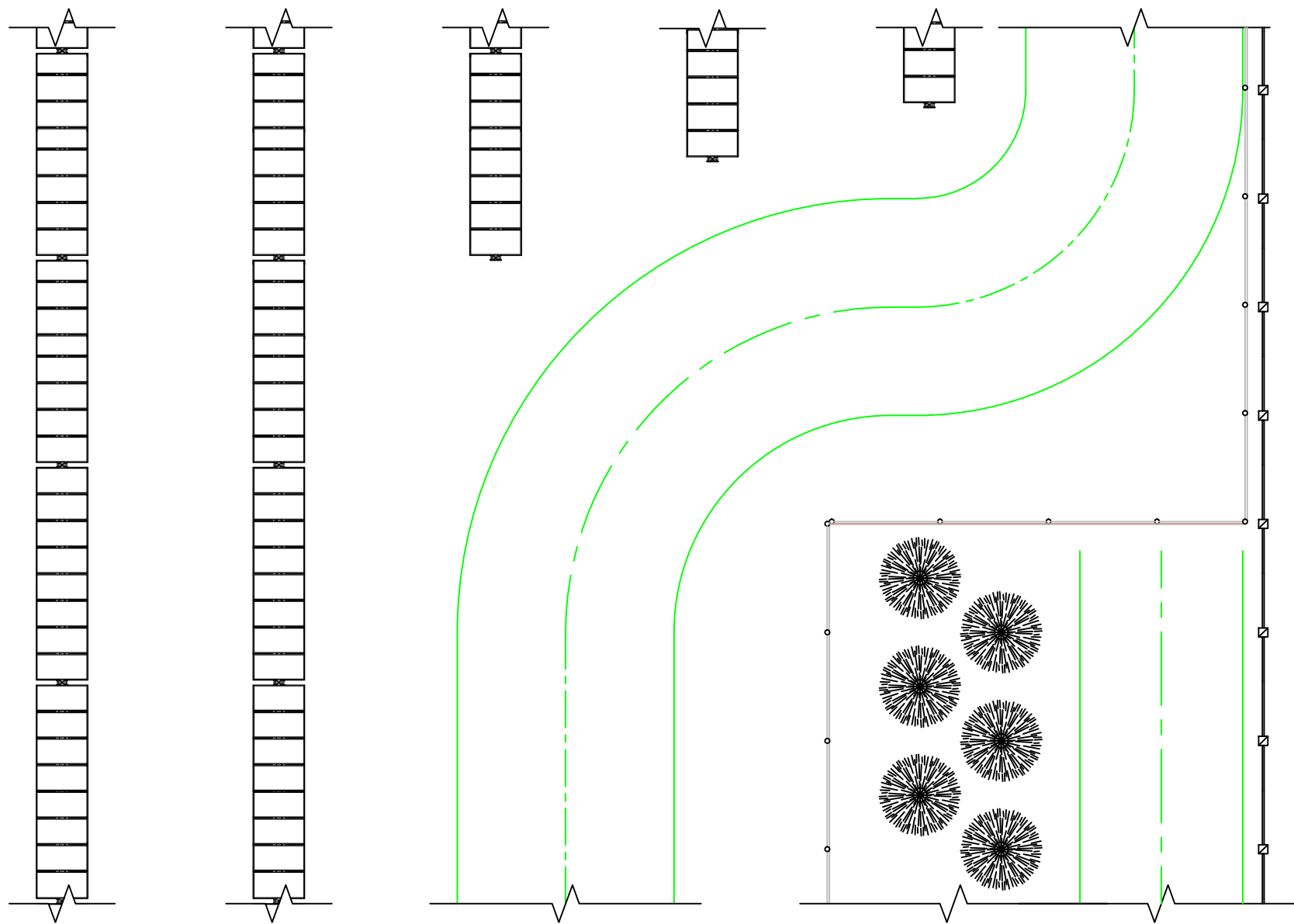
THIS DRAWING IS THE PROPERTY OF RES AUSTRALIA PTY LTD AND NO REPRODUCTION MAY BE MADE IN WHOLE OR IN PART WITHOUT PERMISSION

SUITE 4, LEVEL 1
760 PACIFIC HWY
CHATSWOOD, NSW 2067
TEL: +61 (0)2 8440 7400
EMAIL: info-australia@res-group.com





INDICATIVE BOUNDARY LAYOUT ELEVATION



INDICATIVE BOUNDARY LAYOUT PLAN

FOR INFORMATION ONLY
SUBJECT TO DETAILED DESIGN

01	SH	--	MW	12-03-2018	FIRST ISSUE
ISSUE	DRAWN	CHKD	APPD	DATE	REVISION NOTES
LAYOUT DWG	N/A			T-LAYOUT NO.	N/A

DRAWING NUMBER
03707D2207-01

COORDS N/A

PURPOSE PRELIMINARY

SCALE NOT TO SCALE ORIGINAL PLOT SIZE A3

PROJECT TITLE
GENERIC SOLAR AUS

DRAWING TITLE
TYPICAL PLANT SCREEN LAYOUT

THIS DRAWING IS THE PROPERTY OF RES AUSTRALIA PTY LTD AND NO REPRODUCTION MAY BE MADE IN WHOLE OR IN PART WITHOUT PERMISSION

SUITE 4, LEVEL 1
760 PACIFIC HWY
CHATSWOOD, NSW 2067
TEL: +61 (0)2 8440 7400
EMAIL: info-australia@res-group.com





SOLAR FARM
TECHNICAL FIGURE 4
TYPICAL POWER
CONVERSION UNIT - PCU

- NOTES:**
1. ALL DIMENSIONS ARE MAXIMUM ANTICIPATED AND SUBJECT TO DETAILED DESIGN, BUT WILL BE GENERALLY IN ACCORDANCE WITH THIS DRAWING;
 2. ROOM AND DOOR POSITIONS ARE INDICATIVE AND SUBJECT TO DETAILED DESIGN;
 3. APPROXIMATE FINISHED FLOOR LEVEL 300mm ABOVE EXISTING GROUND;
 4. FINISHES WILL NOT UNDULY CONTRAST WITH SURROUNDINGS.

INFRA DWG	N/A	APPD DATE	03-08-18
LAYOUT DWG	N/A	T-LAYOUT NO.	N/A

DRAWING NUMBER
03707D4001-03

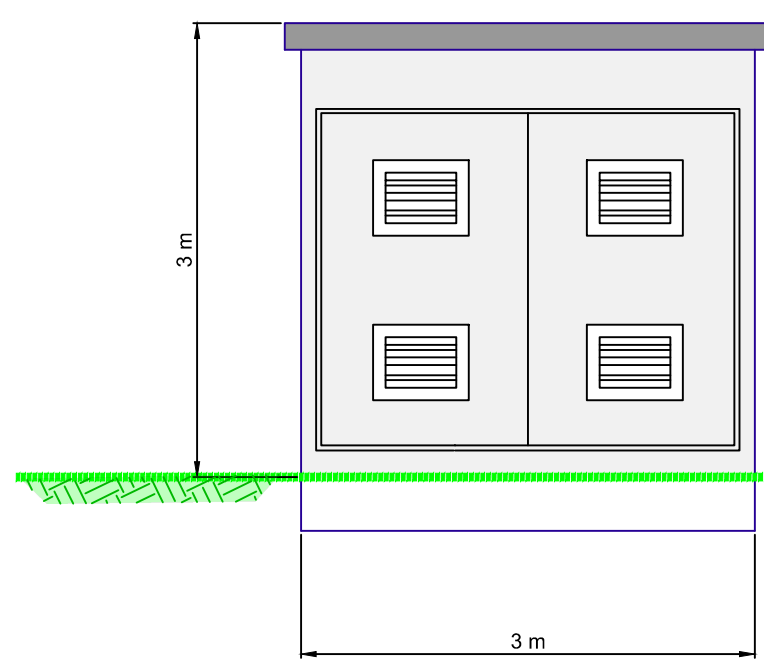
SCALE - N.T.S A3

COORDS N/A

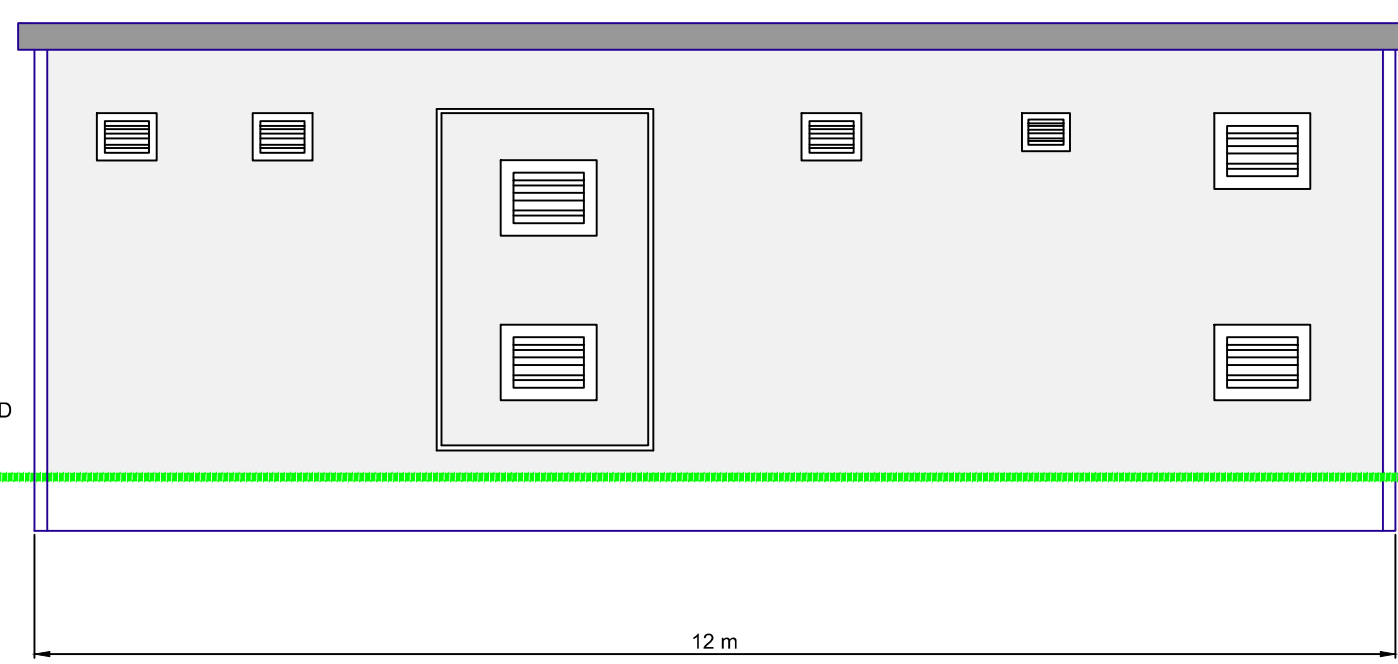
PLANNING PERMIT APPLICATION

THIS DRAWING IS THE PROPERTY OF RES AUSTRALIA PTY LTD AND NO REPRODUCTION MAY BE MADE IN WHOLE OR IN PART WITHOUT PERMISSION

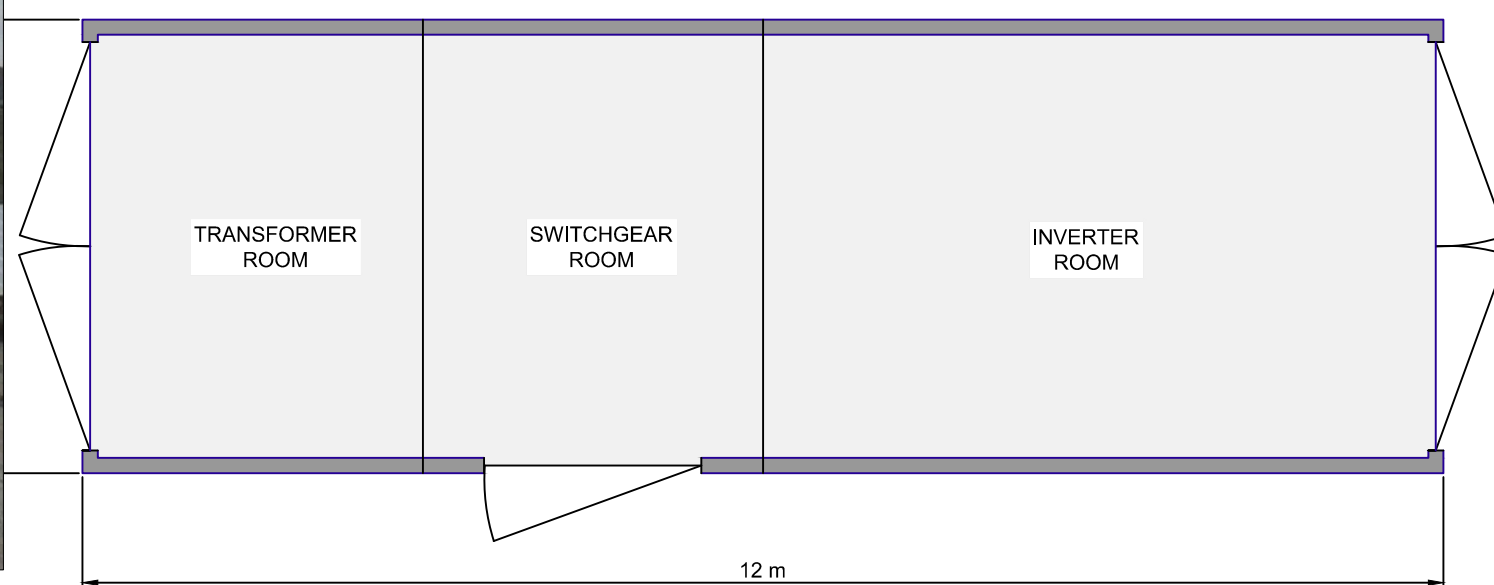
SUITE 4, LEVEL 1
760 PACIFIC HWY
CHATSWOOD, NSW 2067
TEL: +61 (0)2 8440 7400
EMAIL: info-australia@res-group.com



END ELEVATION



SIDE ELEVATION



PLAN

1 2 3 4 5 6 7 8 9 10

A

B

C

D

E

F

G

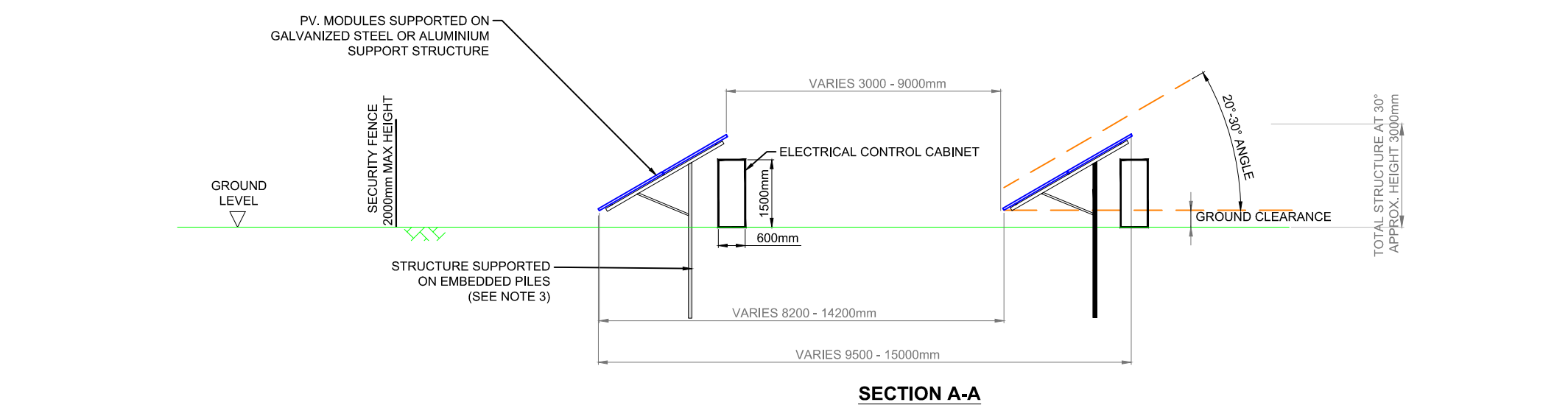
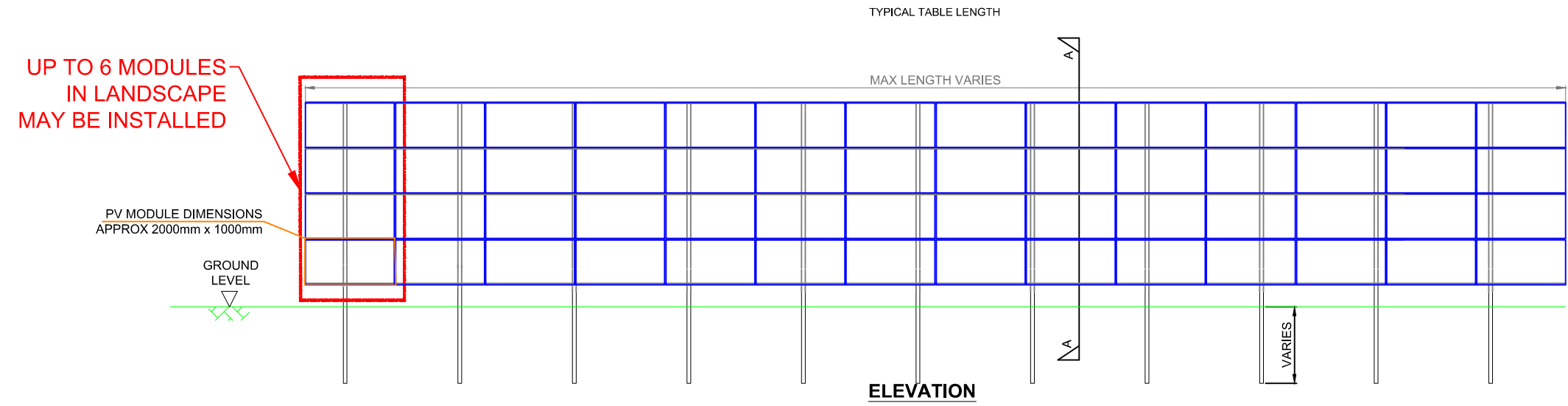
1 2 3 4 5 6 7 8 9 10



SOLAR FARM

TECHNICAL FIGURE 1

**TYPICAL PV MODULE & RACK
DETAIL - PILED FOUNDATION**



NOTES

1. ALL DIMENSIONS ARE SUBJECT TO DETAILED DESIGN;
2. A MINIMUM GROUND CLEARANCE OF AT LEAST 115mm IS REQUIRED AND IT WILL VARY AS REQUIRED ACCORDING TO TOPOGRAPHY;
3. THE PILE DEPTH SHALL BE DETERMINED FOLLOWING DETAILED GEOTECHNICAL SITE INVESTIGATION AND WILL TYPICALLY BE 1.5 - 1.7m. HOWEVER THE MAXIMUM DEPTH COULD BE UP TO 2.4m;
4. PV MODULES ARE SHOWN IN ELEVATION VIEW INSTALLED IN LANDSCAPE, ALTHOUGH THEY MAY BE INSTALLED IN PORTRAIT TO SUIT SITE CONDITIONS. IF INSTALLED IN PORTRAIT WILL NOT EXCEED MAXIMUM HEIGHT.

INFRA DWG	N/A	APPD DATE	06-01-2017
LAYOUT DWG	N/A	T-LAYOUT NO.	N/A

DRAWING NUMBER
03707D2202-01

SCALE - N.T.S A3

COORDS N/A

PLANNING PERMIT APPLICATION

THIS DRAWING IS THE PROPERTY OF RES AUSTRALIA PTY LTD AND NO REPRODUCTION MAY BE MADE IN WHOLE OR IN PART WITHOUT PERMISSION

SUITE 4, LEVEL 1
760 PACIFIC HWY
CHATSWOOD, NSW 2067
TEL: +61 (0)2 8440 7400
EMAIL: info-australia@res-group.com

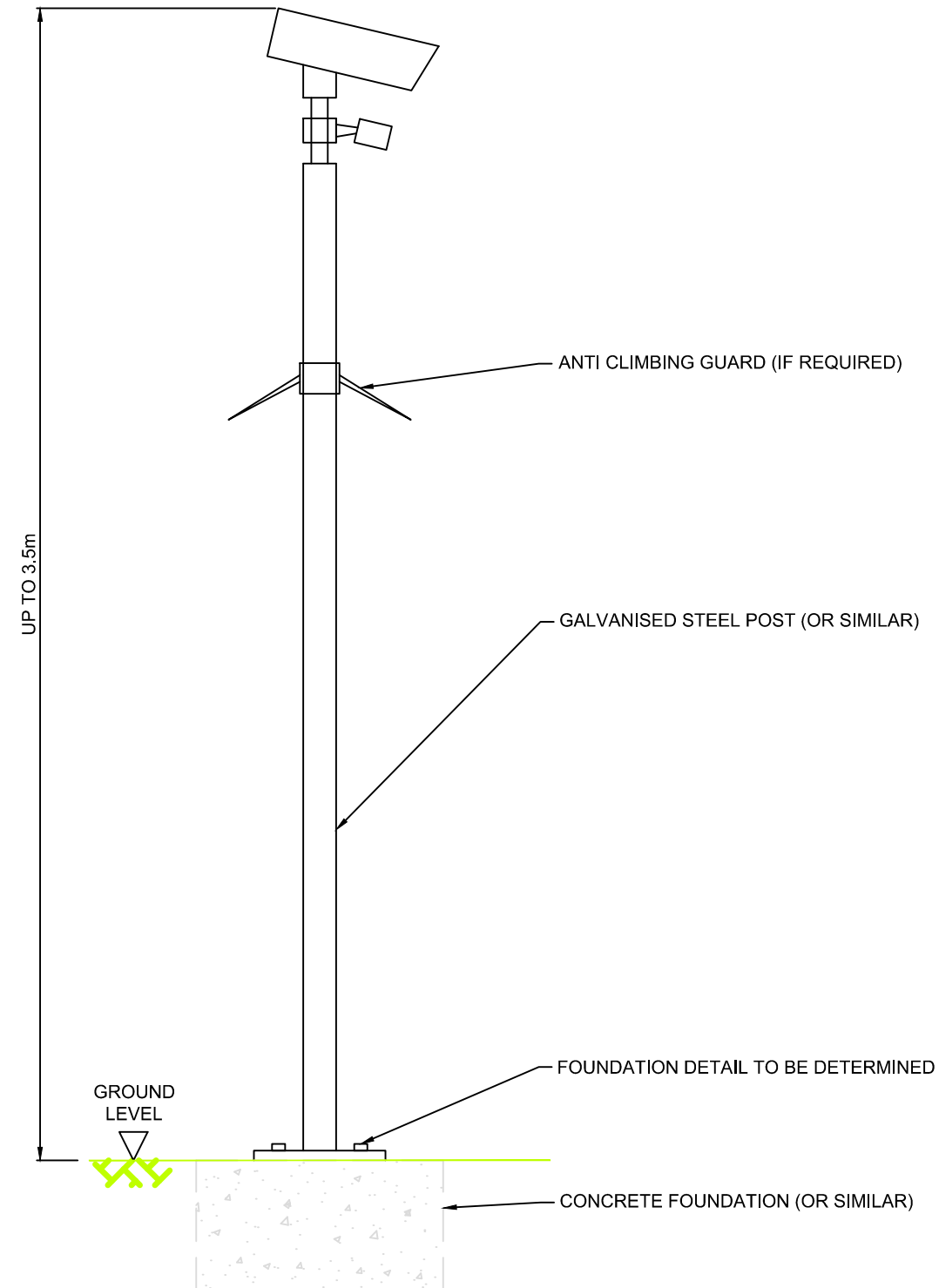




SOLAR FARM
TECHNICAL FIGURE 6
TYPICAL CCTV
SUPPORT DETAILS

NOTES:

1. ALL DIMENSIONS ARE MAXIMUM ANTICIPATED AND SUBJECT TO DETAILED DESIGN, BUT WILL BE GENERALLY IN ACCORDANCE WITH THIS DRAWING;
2. CAMERAS WILL BE INFRARED;
3. CCTV SUPPORTS TO BE LOCATED ADJACENT TO SECURITY FENCING;
4. CAMERAS MAY BE INSTALLED WITH PAN FUNCTION;
5. TO BE INSTALLED IF REQUIRED BY INSURERS.



ELEVATION

INFRA DWG	N/A	APPD DATE	13-11-18
LAYOUT DWG	N/A	T-LAYOUT NO.	N/A

DRAWING NUMBER
03707D2201-04

SCALE - N.T.S.

COORDS N/A

PLANNING PERMIT APPLICATION

THIS DRAWING IS THE PROPERTY OF RES AUSTRALIA PTY LTD AND NO REPRODUCTION MAY BE MADE IN WHOLE OR IN PART WITHOUT PERMISSION

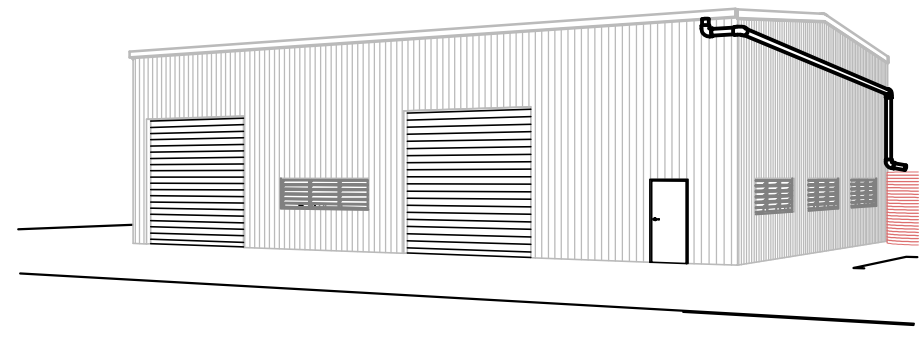
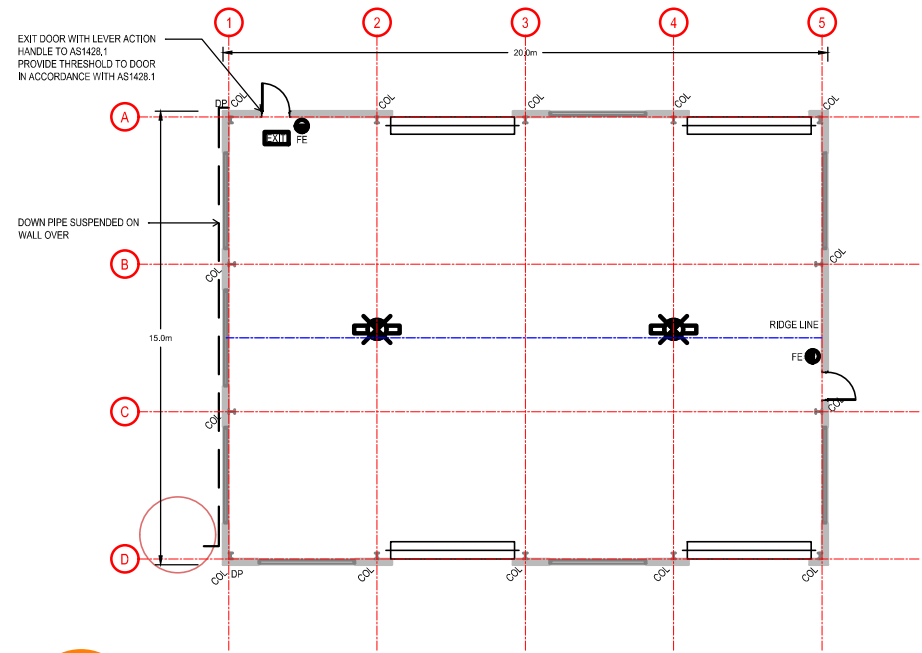
SUITE 4, LEVEL 1
760 PACIFIC HWY
CHATSWOOD, NSW 2067
TEL: +61 (0)2 8440 7400
EMAIL: info-australia@res-group.com





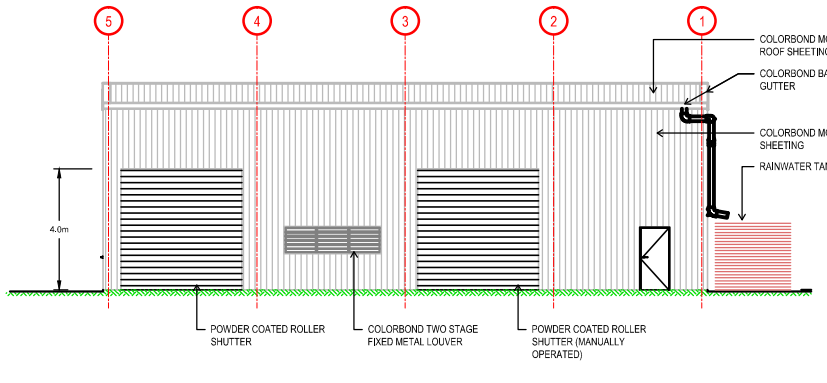
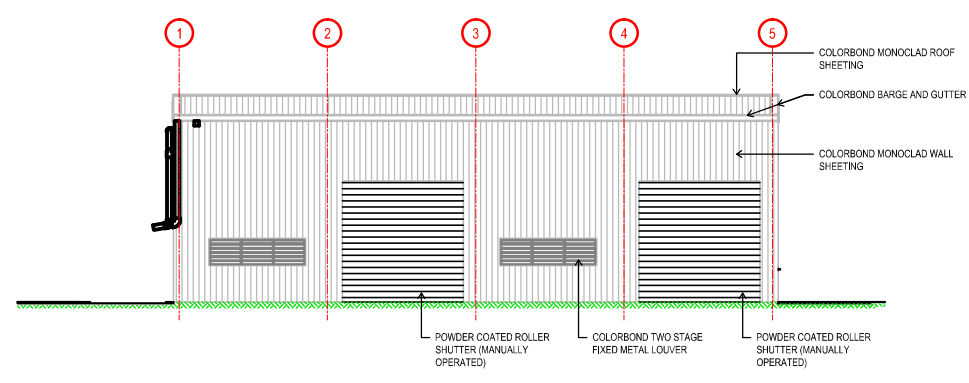
SOLAR FARM
 TECHNICAL FIGURE 9
 TYPICAL STORAGE SHED

NOTES
 LAYOUTS AND DIMENSIONS ARE INDICATIVE ONLY TO SHOW GENERAL ARRANGEMENT CONCEPTS AND ALL DETAILS ARE SUBJECT TO FINAL DESIGN.



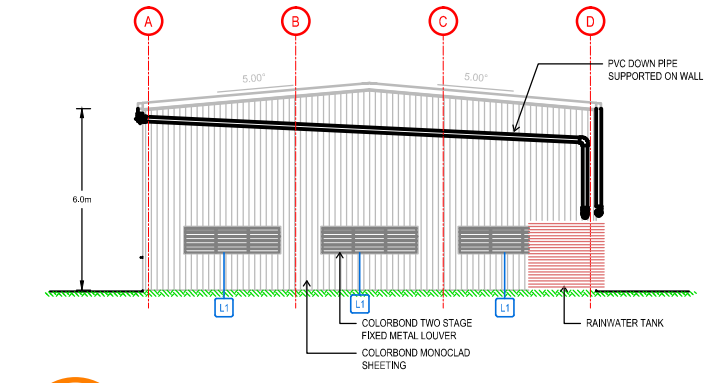
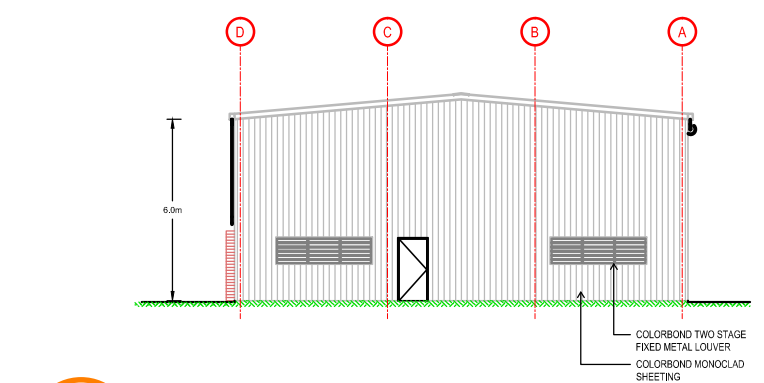
1 STORAGE SHED FLOOR PLAN

PERSPECTIVE
 3D STORAGE SHED



S STORAGE SHED SOUTHERN ELEVATION

N STORAGE SHED NORTH ELEVATION



E STORAGE SHED EASTERN ELEVATION

W STORAGE SHED WESTERN ELEVATION

LEGEND - FLOOR PLAN

- PROPOSED WALL REFER WALL SCHEDULE FOR TYPE
- CIRCULATION SPACE TO AS1428.1-2009
- MIN. 920 DOOR TO AS1428.1-2009 (MIN. 850 CLEAR)
- WALL
- CIRCULATION SPACE TO AS1428.1-2009
- FHR 35m x 10mm ID FIRE HOSE REEL INSTALLED IN ACCORDANCE WITH AS2441
- FE 4.5kg 4A-60(B/E) DRY CHEMICAL FIRE EXTINGUISHER INSTALLED IN ACCORDANCE WITH AS2444-1990
- BOLLARD REFER SLAB DETAILS FOR BOLLARD DETAILS
- DOWNPIPE REFER STORMWATER PLAN FOR SIZE
- WALL TAG, REFER WALL SCHEDULE FOR WALL TYPE, INSULATION AND FINISH
- DOOR TAG, REFER DOOR SCHEDULE FOR DETAILS
- WINDOW TAG, REFER WINDOW SCHEDULE FOR DETAILS
- CURTAIN WALL TAG, REFER NON-STANDARD WINDOW SCHEDULE FOR DESCRIPTION, REFER ELEVATIONS AND PLAN FOR MULLION SETOUT

NOTES:

- ROLLER DOORS TO BE DESIGNED TO MEET PRESSURE CAPACITY REQUIREMENTS OF THE REGION
- DISABILITY ACCESS TO COMPLY WITH AS1428.1 INCLUDING A MAXIMUM THRESHOLD OF 5mm AND CARPARK GRADES TO BE A MAXIMUM OF 1 IN 40 (2.5%) FROM DISABILITY CARPARK TO BUILDING.
- CONCRETE TILT PANELS TO COMPLY WITH BCA CL 1.11.
- REFER GENERAL NOTES ON 001 FOR FURTHER NOTES AND ABBREVIATIONS
- REFER TO THE SCHEDULE OF FIXTURES AND FINISHES FOR SPECIFICATIONS

EMERGENCY LIGHTING SCHEDULE

SYMBOL	CO	CSO	HEIGHT	DESCRIPTION
	D50	C50	5000	STANLITE EC8T136M, MAINTAINED 36W SINGLE, BARE BATTEN
	D25	D25	2700	STANLITE ESFLD
	E2.5	E2.5	2400	STANLITE EELD 10W MAINTAINED, SINGLE SIDE

TO COMPLY WITH AS2293.1-2005 AND B.C.A. PART 4.

BASED ON I³ DRAWINGS

i consulting pty ltd
 engineering consultants
 innovation, ingenuity, inspiration
 Lvl2, 39 Shawwood Rd
 Torrens, Qld 4006
 www.i3consult.com.au
 ABN 89 106 075 156
 PO Box 878
 Torrens, Qld 4006
 mail@i3consult.com.au
 ACN 106 875 156
 p. 07 3870 8888

INFRA DWG	N/A	APPD DATE	03-08-2018
LAYOUT DWG	N/A	T-LAYOUT NO.	N/A
DRAWING NUMBER 03707D3503-01			
SCALE - N.T.S		@A3	
COORDS N/A			
PLANNING PERMIT APPLICATION			
THIS DRAWING IS THE PROPERTY OF RES AUSTRALIA PTY LTD AND NO REPRODUCTION MAY BE MADE IN WHOLE OR IN PART WITHOUT PERMISSION			
SUITE 4, LEVEL 1 760 PACIFIC HWY CHATSWOOD, NSW 2067 TEL: +61 (0)2 8440 7400 EMAIL: info-australia@res-group.com			





SOLAR FARM

TECHNICAL FIGURE 3 TYPICAL TEMPORARY CONSTRUCTION COMPOUND

LEGEND

OPTIONAL SECURITY FENCE

NOTES

- LAYOUT AND DIMENSIONS ARE INDICATIVE ONLY TO SHOW GENERAL ARRANGEMENT CONCEPTS AND ARE SUBJECT TO FINAL DESIGN;
- STRUCTURE TO BE TEMPORARY AND TO BE REMOVED AFTER CONSTRUCTION;
- COMPOUND HARDSTANDING CONSISTING OF COMPACTED STONE TO PROVIDE A CLEAN, FIRM, LEVEL AND FREE DRAINING SURFACE SUITABLE FOR CABINS AND HEAVY TRAFFIC;
- TREATMENT OF OIL SEPARATION OF OILS AND TREATMENT OF WASTEWATER TO ACCORD WITH EPA AND/OR COUNCIL REQUIREMENTS;
- VEHICULAR GATES EXPECTED TO BE 6m WIDE CONSISTING OF 2 x 3m LEAVES;
- COMPOUND EQUIPMENT AND FACILITIES ARE INDICATIVE, BUT SHALL BE CONSTRUCTED ACCORDING TO THE PRINCIPLES NOTED ON THIS PLAN AND AS PER THE APPROVED MANAGEMENT PLANS;
- FOR INDICATIVE LOCATION OF SATELLITE CONSTRUCTION COMPOUNDS REFER TO THE INFRASTRUCTURE DRAWING.

INFRA DWG	N/A	APPD DATE	16-08-2018
LAYOUT DWG	N/A	T-LAYOUT NO.	N/A

DRAWING NUMBER
03707D3502-03

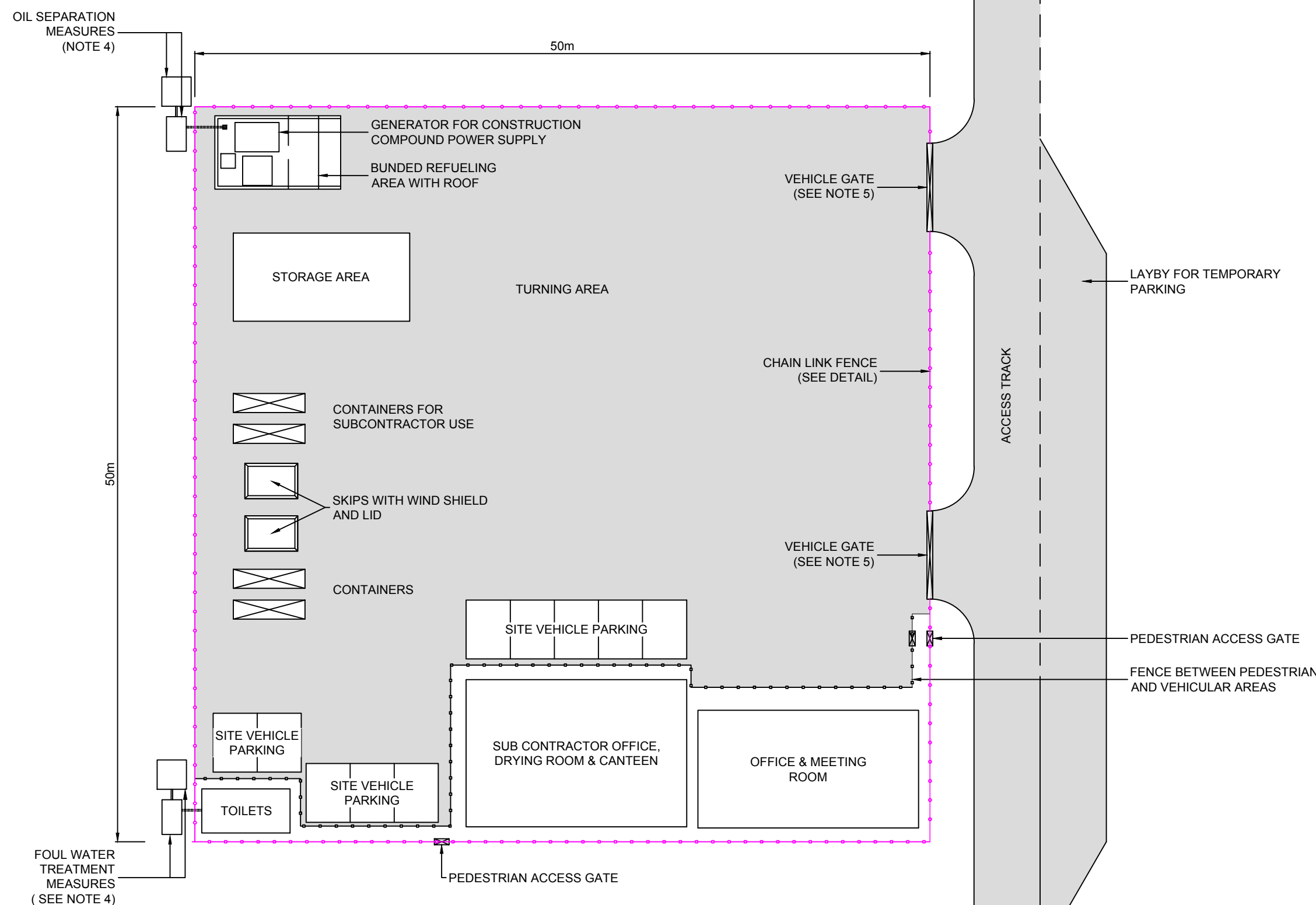
SCALE - N.T.S A3

COORDS N/A

PLANNING PERMIT APPLICATION

THIS DRAWING IS THE PROPERTY OF RES AUSTRALIA PTY LTD AND NO REPRODUCTION MAY BE MADE IN WHOLE OR IN PART WITHOUT PERMISSION

SUITE 4, LEVEL 1
760 PACIFIC HWY
CHATSWOOD, NSW 2067
TEL: +61 (0)2 8440 7400
EMAIL: info-australia@res-group.com



PLAN
SCALE - 1:300