

Aspect Industrial Estate, Mamre Rd, Kemps Creek
Landscape Masterplan MOD3
July 2022



Contents Page

- Introduction
- Landscape Concept Masterplan
- Entry Landscape
- Typical Lot Frontage
- Mamre Road Frontage
- Mamre Road Frontage Planting
- Estate Roads
- Primary Access Road
- Secondary Roads
- Boundaries
- Boundary Planting
- Stormwater Basin
- Riparian Zone
- Riparian Zone Pathway and Nodes
- Riparian Zone Planting

Introduction

The landscape concept masterplan demonstrates the vision for the **Aspect Industrial Estate**.

This Masterplan report is to be read with the following landscape documentation as well as civil, architectural and ecological reports.



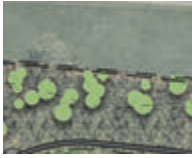



This report and the following documents have been prepared to respond to SEARS condition for detailed landscape plans.

‘Detailed landscaping plans’

WH9_000	Lot 9 Landscape Coversheet
WH9_101	Lot 9 Landscape Plan
WH9_102	Lot 9 Landscape Plan
WH9_103	Lot 9 Landscape Plan
WH9_104	Lot 9 Landscape Plan
WH9_105	Lot 9 Landscape Plan
WH9_106	Lot 9 Landscape Plan
WH9_107	Lot 9 Landscape Plan
WH9_108	Lot 9 Landscape Plan
WH9_109	Lot 9 Landscape Plan
WH9_501	Landscape Details
WH9_502	Landscape Details



Landscape Concept Masterplan

-  Estate Entry Feature
-  Streetscape
-  Riparian Zone
-  Stormwater Basin
-  Boundary Planting
-  On Lot Landscape

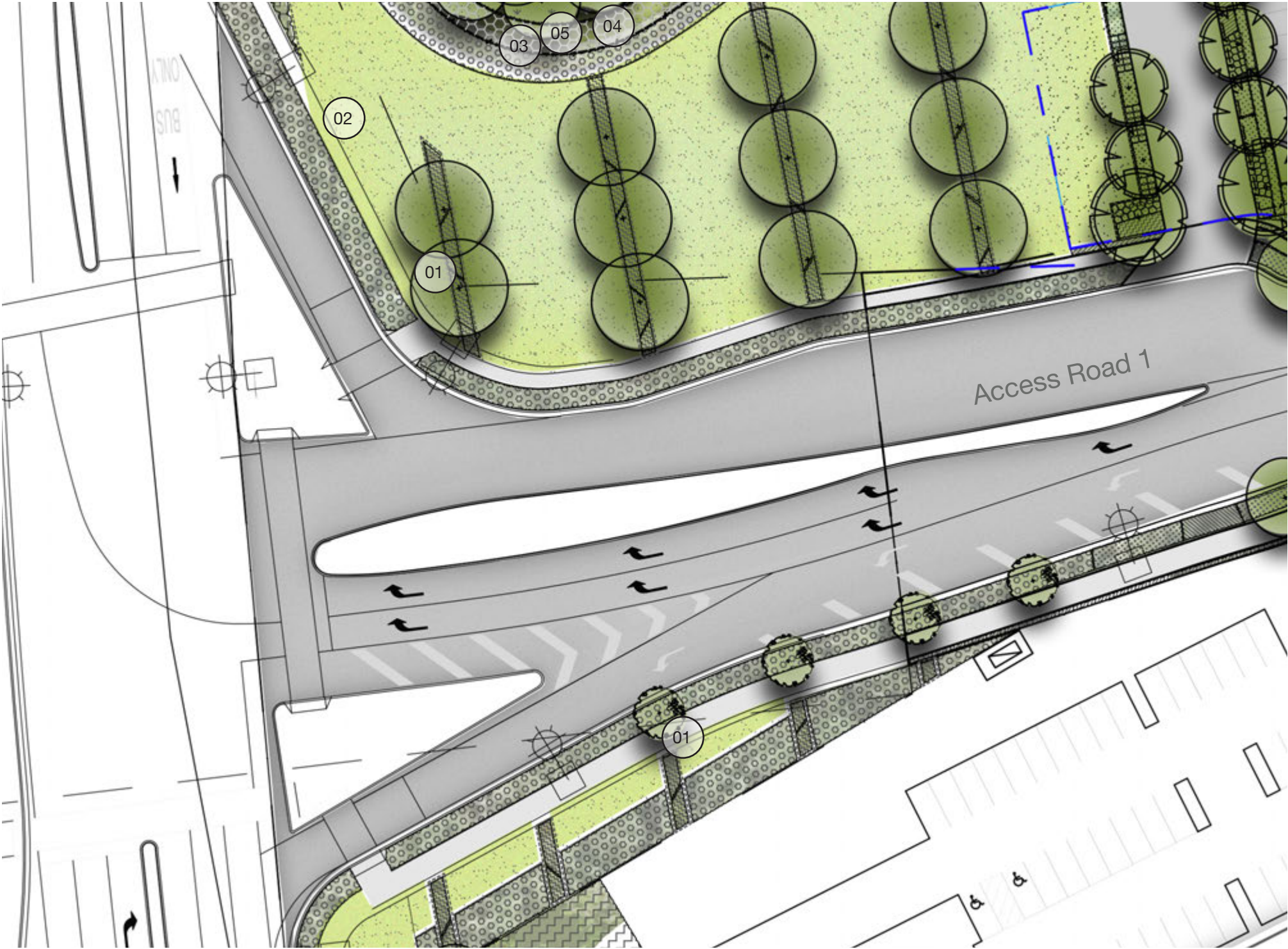
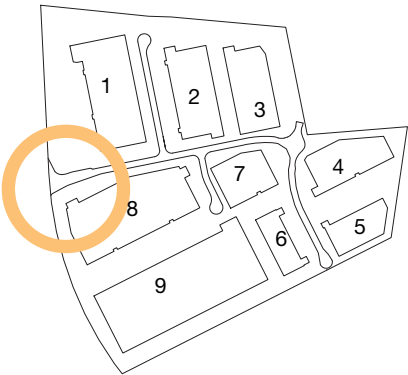


scale: 1:4000 @ A3

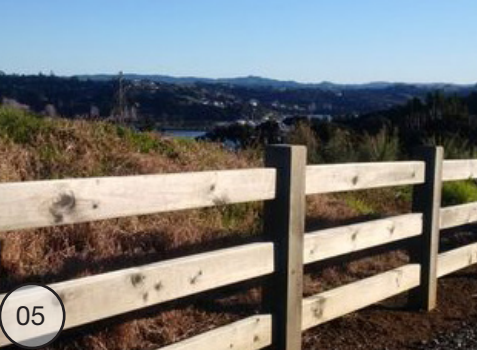
0 40 100m 200m 400m

Entry Landscape

The entry landscape located to the northern side of the Mamre Road entry provides a landscape arrival feature. A open lawn area with a series of banding of grasses and concrete inlays frames the entry road and provides a framework for future amenity in this area. The adjacent stormwater basin's planting will be visible for this area. Connecting the Entry feature to Lot 1 is a carpark with feature unit paving to encourage permeability of pedestrians between the building, carpark and broader landscape.

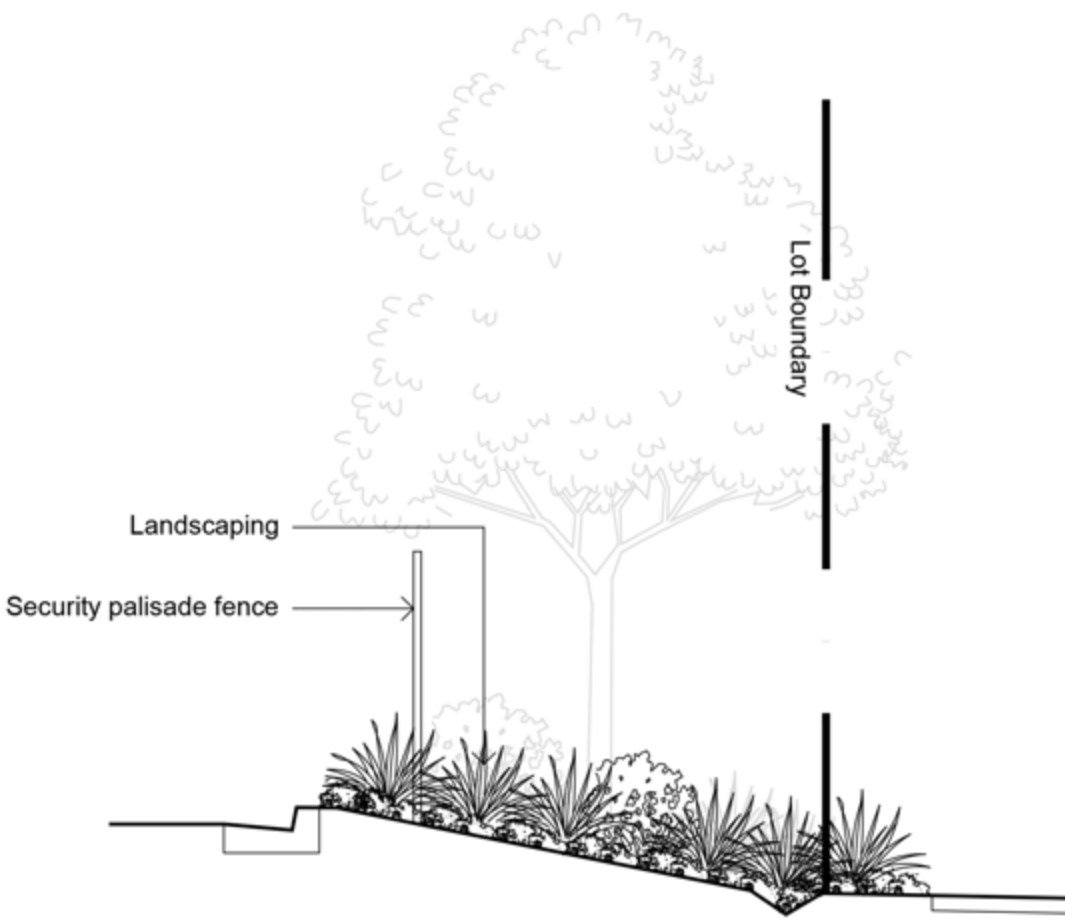


- 01 Feature blade walls
- 02 Entry massed grasses and groundcover planting
- 03 Massed Grasses to stormwater basin perimeter
- 04 Stormwater maintenance pathway
- 05 Fence to stormwater basin

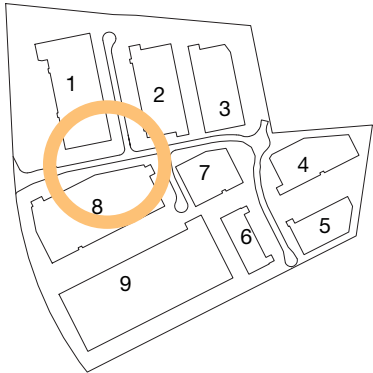


Typical Lot Frontage

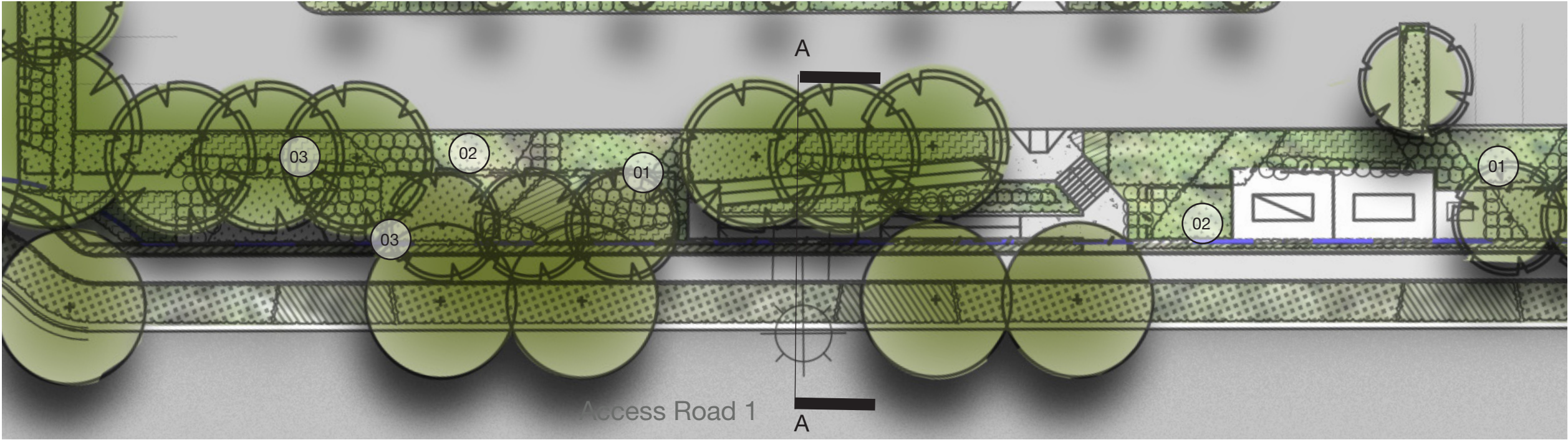
The lot frontages are the main presentational frontage of lots to the estate road. Planting to the frontages will consist of a variety of native and exotic, shrubs, groundcovers and small-medium trees. Security fencing is to be positioned amongst the landscape to recede into planting.



Section A Lot Frontage Cross Section 1:50

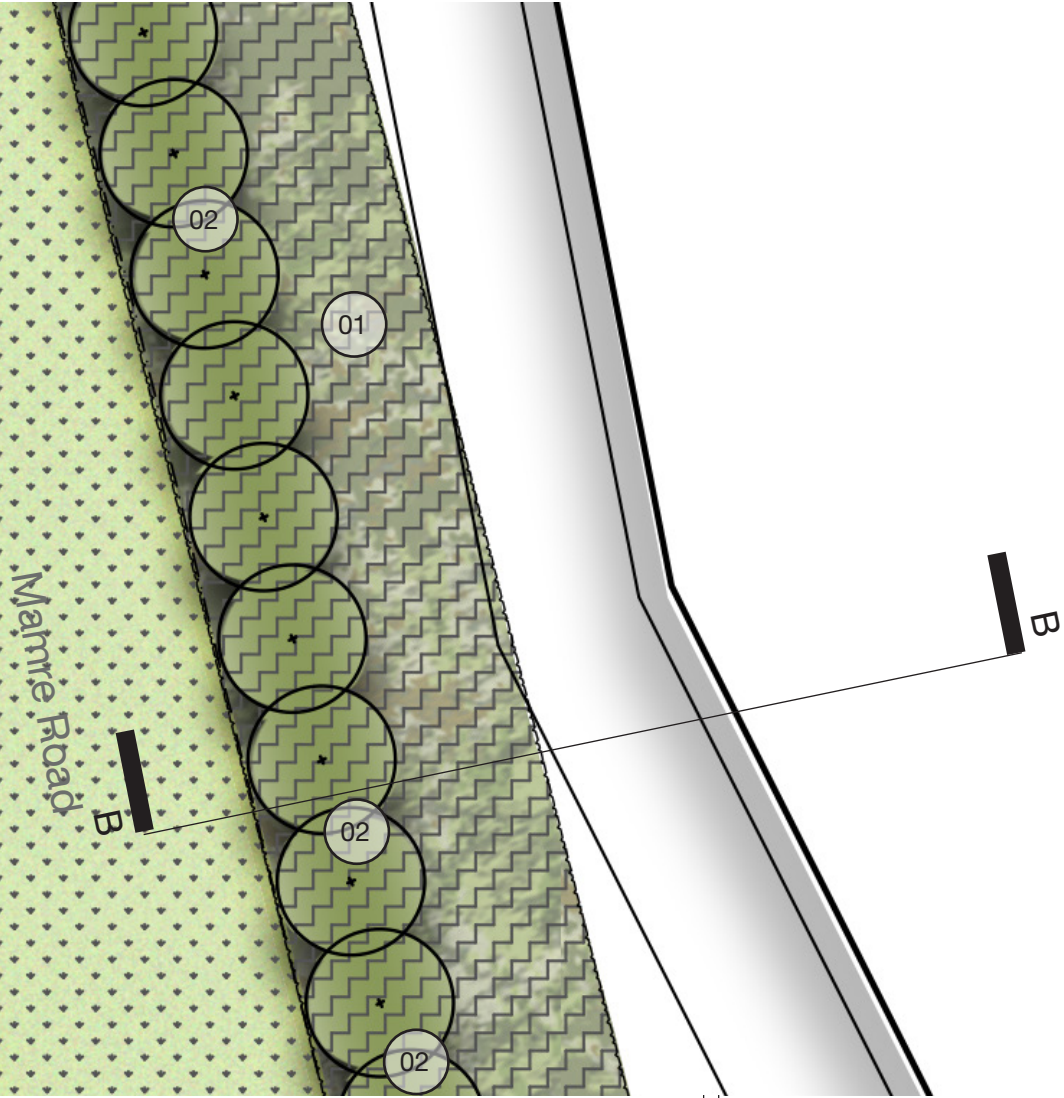


- 01 Planting in blocks
- 02 Massed low grasses and groundcovers
- 03 Boundary tree planting

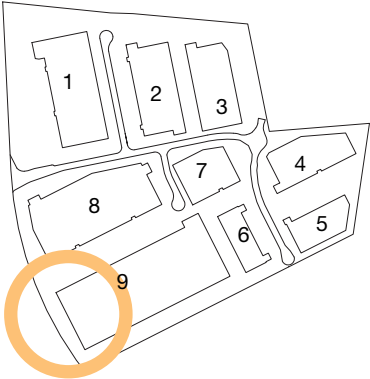


Mamre Road Frontage

The Mamre Road frontage consists of embankments sloping from lots down the road, Massed planting of shrubs, grasses and groundcovers is proposed with large canopy trees.



Lot 9



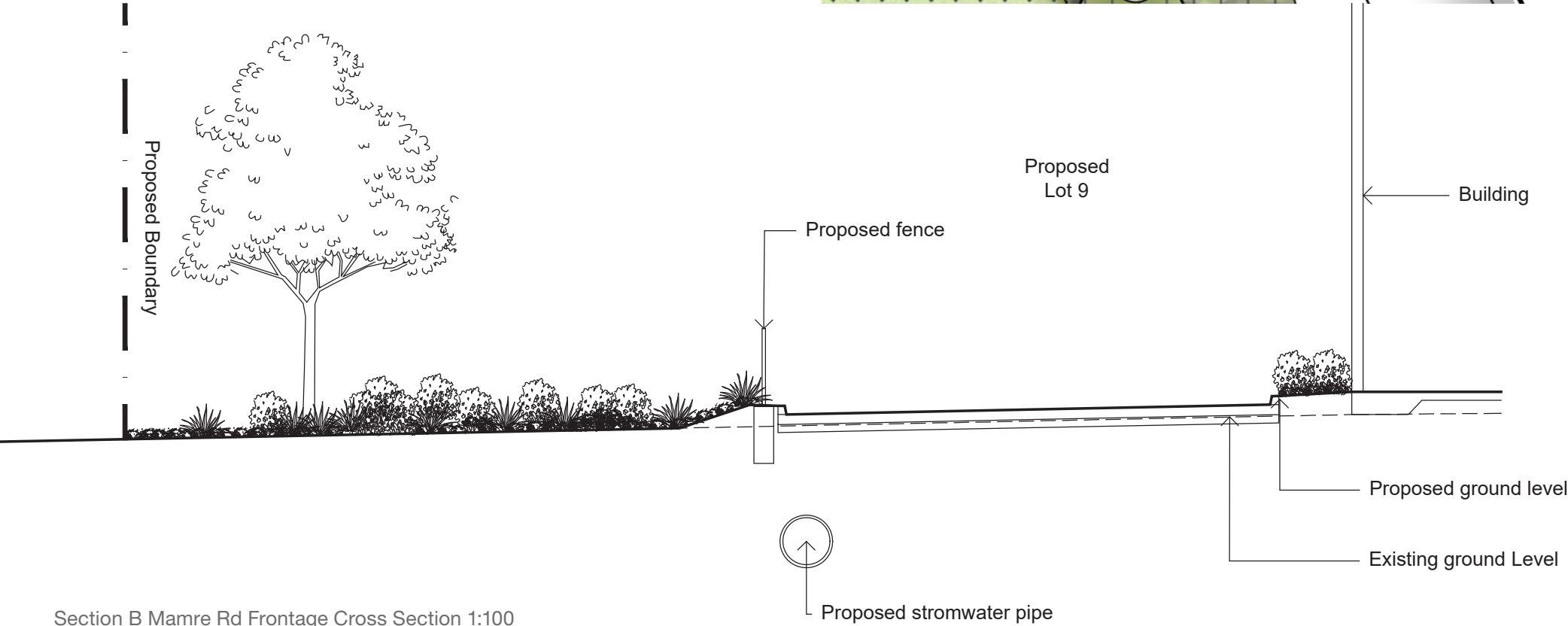
- 01 Massed planting
- 02 Canopy Tree Planting



Massed grasses and shrubs



Canopy tree planting



Section B Mamre Rd Frontage Cross Section 1:100

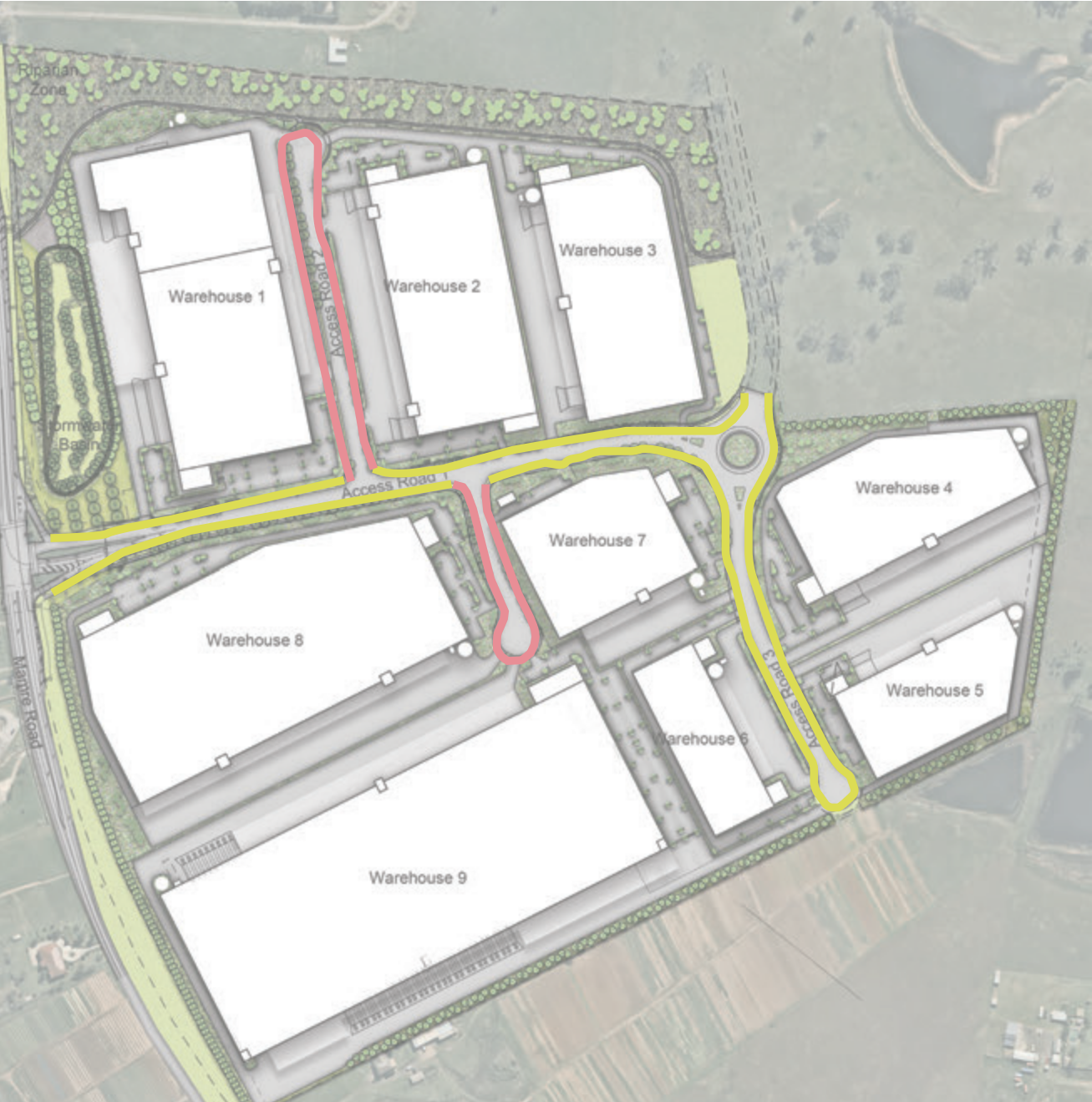
Mamre Road Frontage Planting

Botanic Name	Common Name	Mature Size (h x w) (m)	
TREES			
<i>Corymbia maculata</i>	Spotted Gum	30 x 8	
<i>Eucalyptus eugenioides</i>	Thin leaved stringybark	20 x 8	
<i>Melaleuca styphelioides</i>	Prickly Leaved Paperbark	8 x 6	
SHRUBS & ACCENTS			
<i>Acmena smithii</i> var. minor	Lilly Pilly	2 x 2	
<i>Callistemon</i> 'Endeavour'	Bottlebrush	2x3	
<i>Callistemon</i> 'Little John'	Dwarf Bottle Brush	1 x 1	
<i>Dodonaea viscosa</i> subsp. cuneata	Wedge-leaf Hop-bush		
<i>Melaleuca linariifolia</i> 'Claret Tops'	Honey Myrtle	1 x 1	
<i>Phormium tenax</i> 'Purpureum'	Bronze Flax	1.5 x 1	
<i>Westringia fruticosa</i>	Coastal Roosemary	2 x 2	
GRASSES AND GROUNDCOVERS			
<i>Carpobrotus glaucescens</i>	Pigface	.15 x 1	
<i>Gazania tomentosa</i>	Silver Gazania	.15 x 1	
<i>Hardenbergia violacea</i>	Purple Coral Pea		
<i>Lomandra longifolia</i>	Matt Rush	1 x 1	
<i>Myoporum parvifolium</i>	Creeping Boobialla	.3 x 2	
<i>Poa</i> 'Kingsdale'	Tussock Grass	.3 x .6	
<i>Pennisetum</i> 'Nafray'	Swamp Foxtail Grass	.6 x .6	
<i>Trachospermum jasminoides</i>	Star Jasmine	0.3 x 0.3	
Indicates species from endemic vegetation community			

Indicative Species



Estate Roads



Primary Access Roads
Road 1, Road 3

Corymbia maculata
Spotted Gum



Secondary Roads
Road 2, Road 4

E. crebra
Narrow Leaved Ironbark



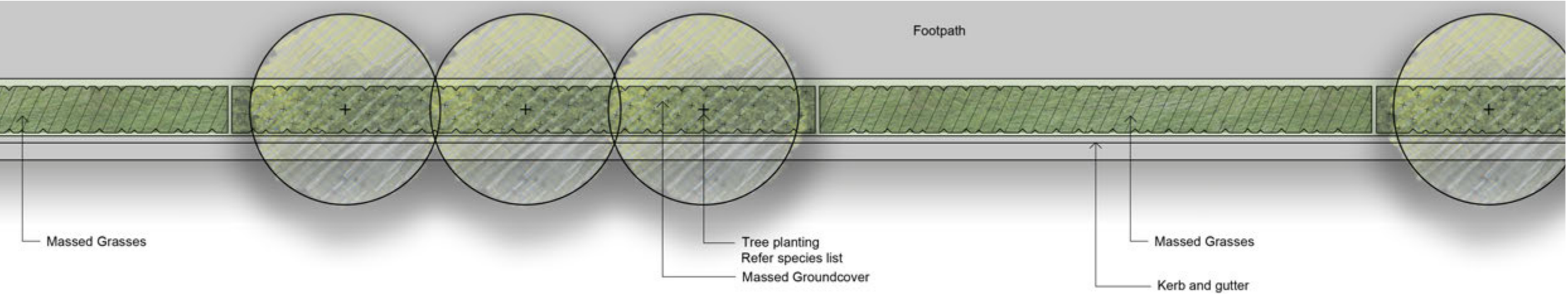
Understorey Planting



Myoporum parvifolium to understorey of trees

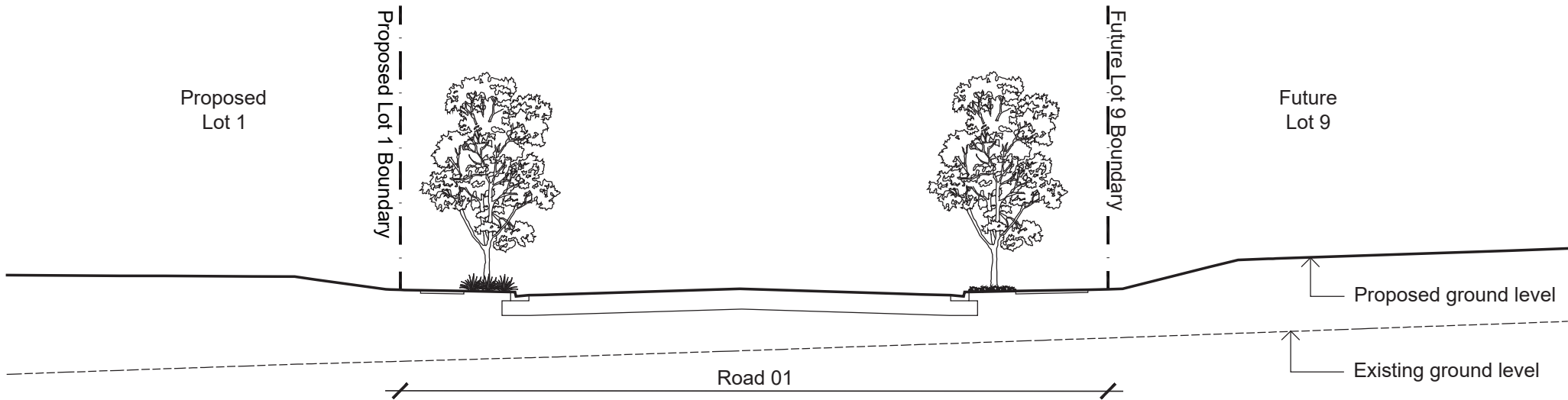
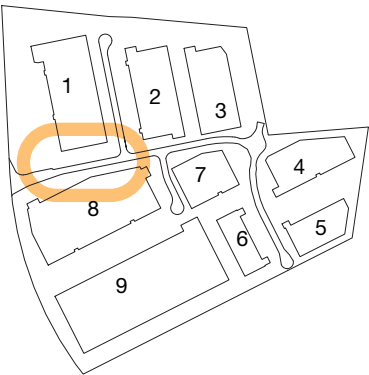


Massed grasses to alternate

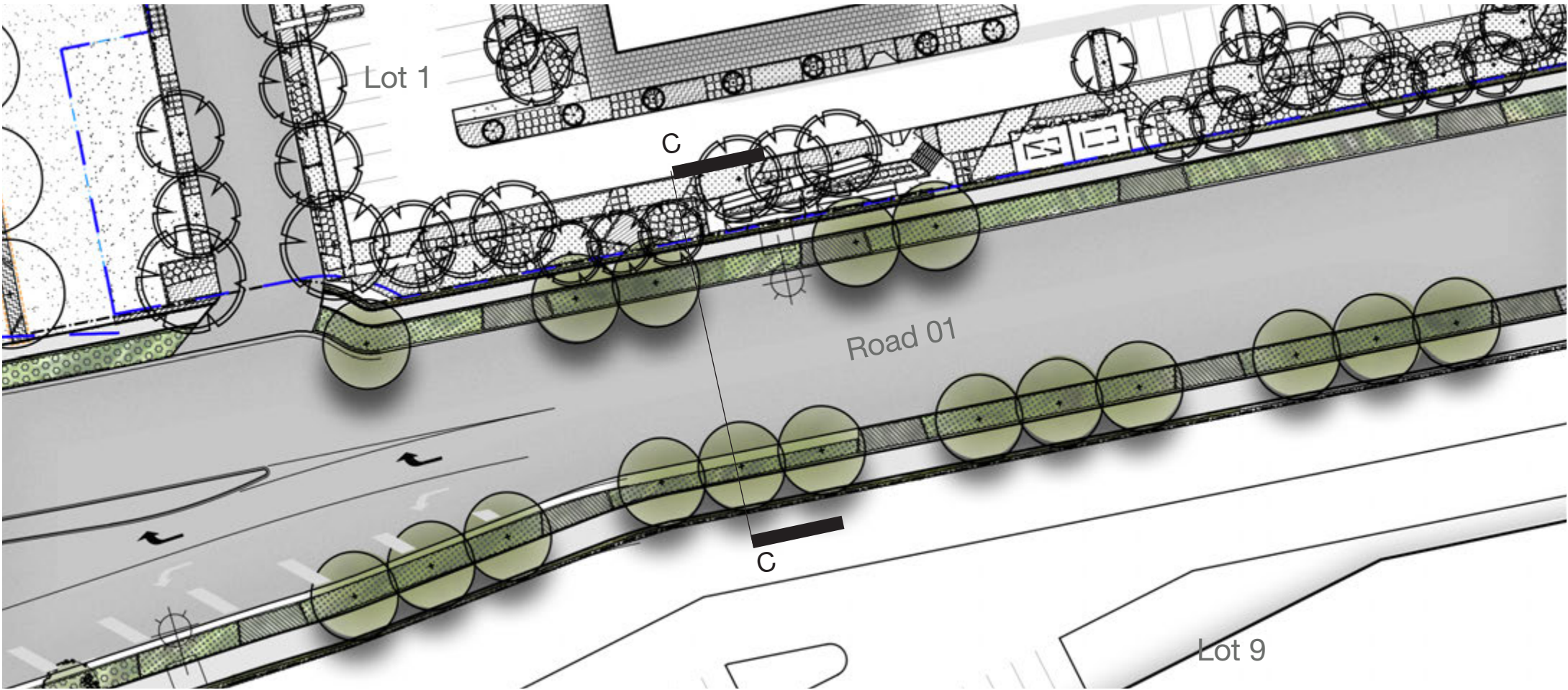


Primary Access Road

Estate Roads are proposed to have groups of canopy trees with low grass and groundcover underplanting. Tree species will vary based on the street hierarchy.

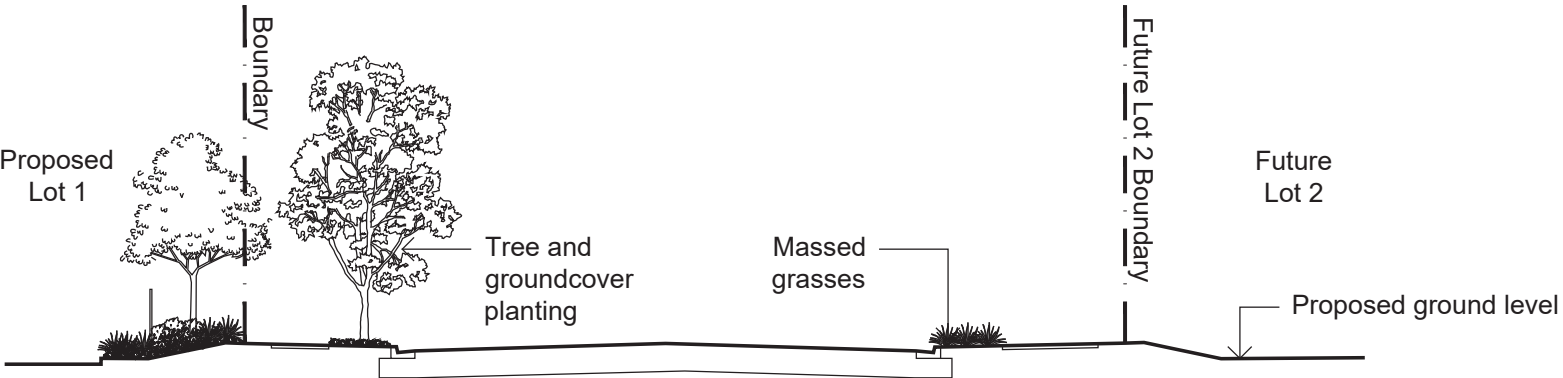
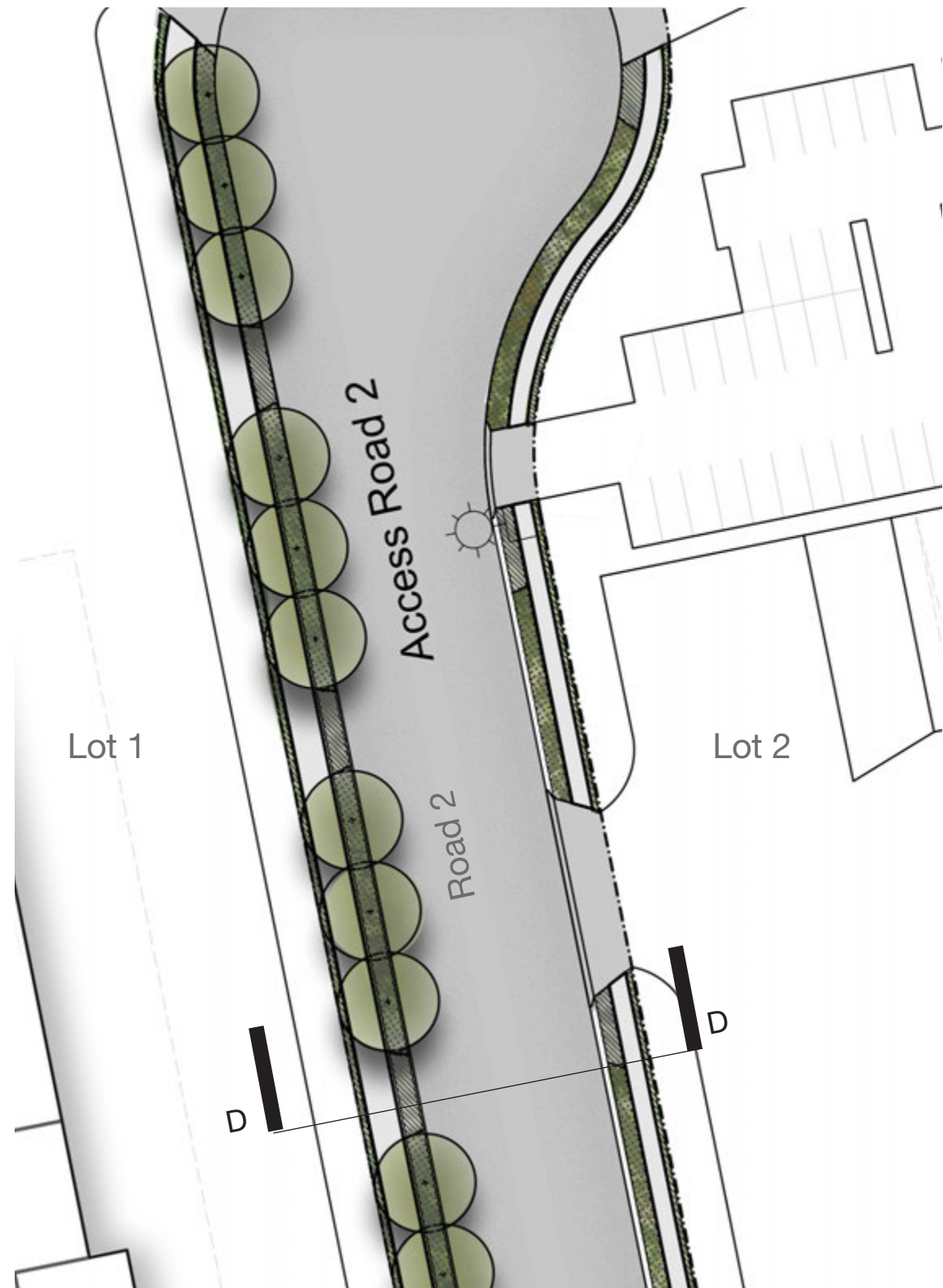
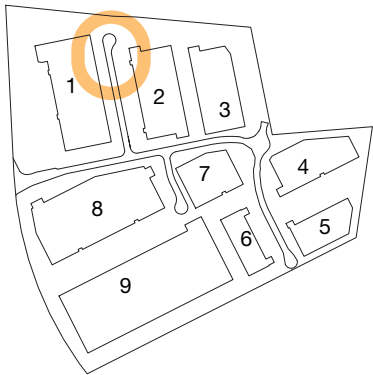


Section C Road 01 Section 1:50



Secondary Road

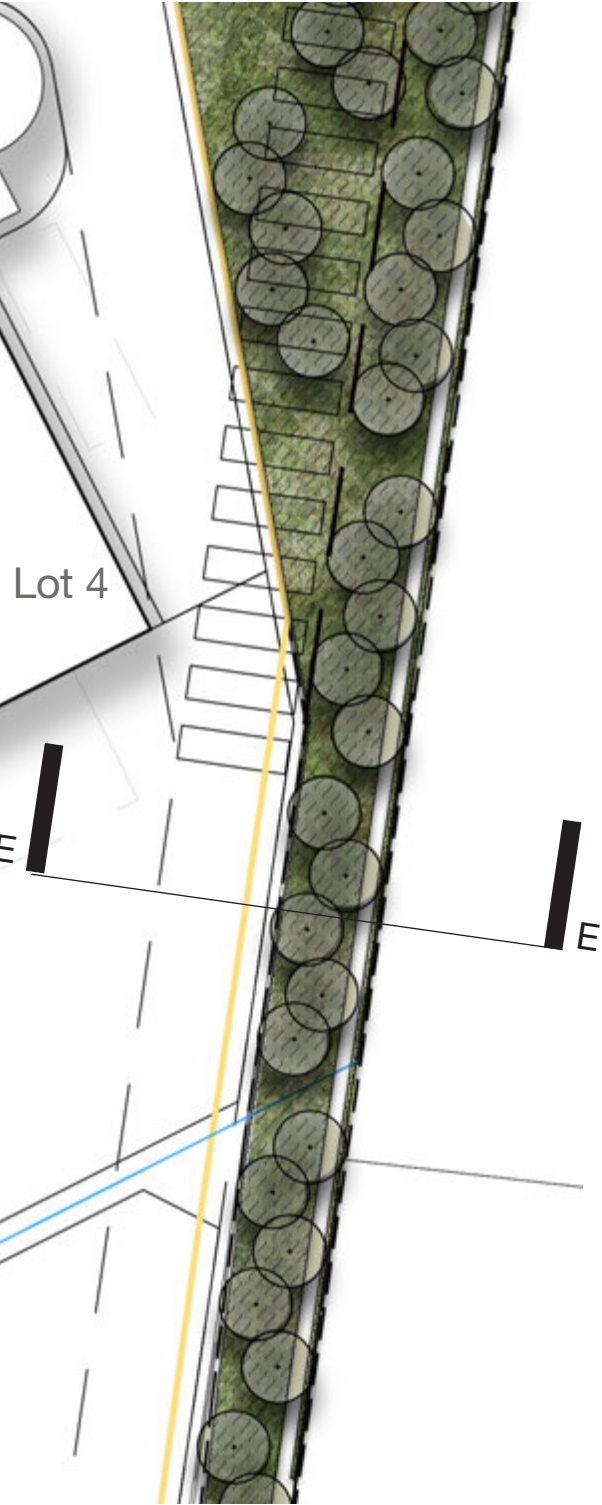
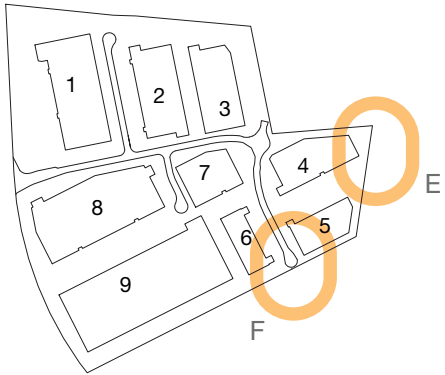
Secondary roads feature the same general arrangement as primary roads. Groups of trees can be positioned to allow for the arrangement of services and utilities such as lightpoles.



Section D Road 2 Section 1:50

Boundaries

Boundary treatments will feature planting of native shrub grass and groundcovers. In locations where there is a retaining wall below cascading plants will be provided to break up the mass of the wall.



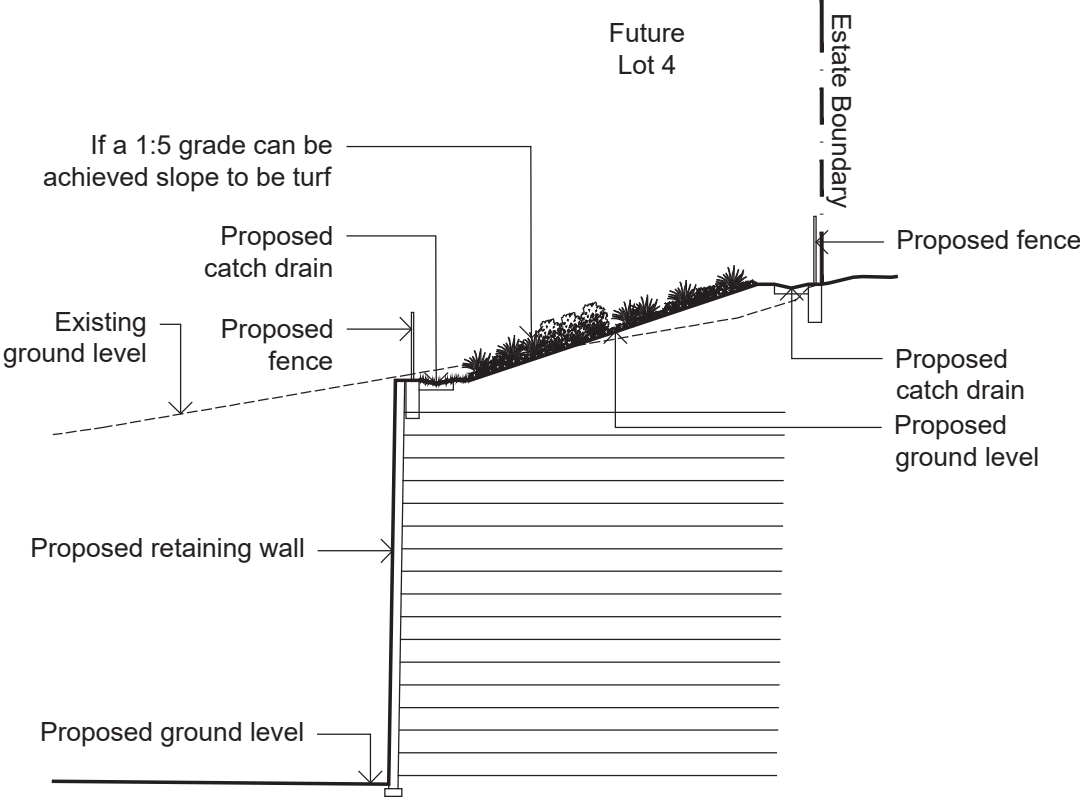
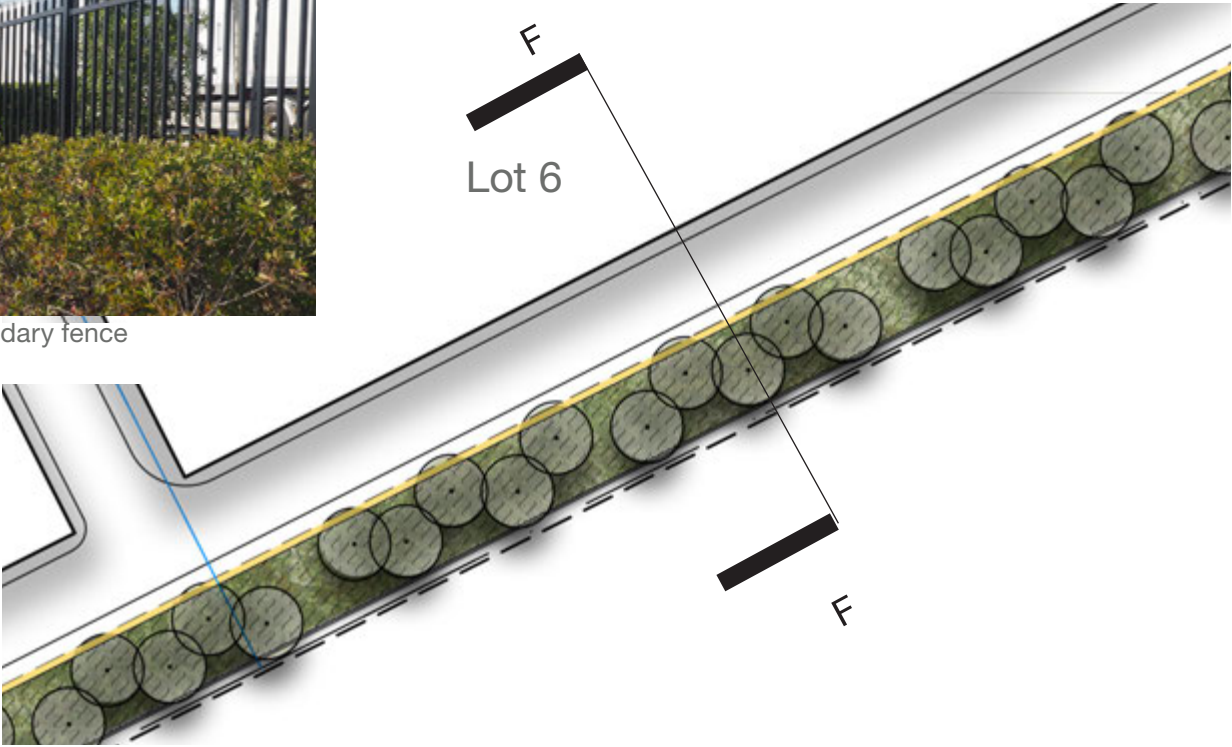
Shrub and grass planting



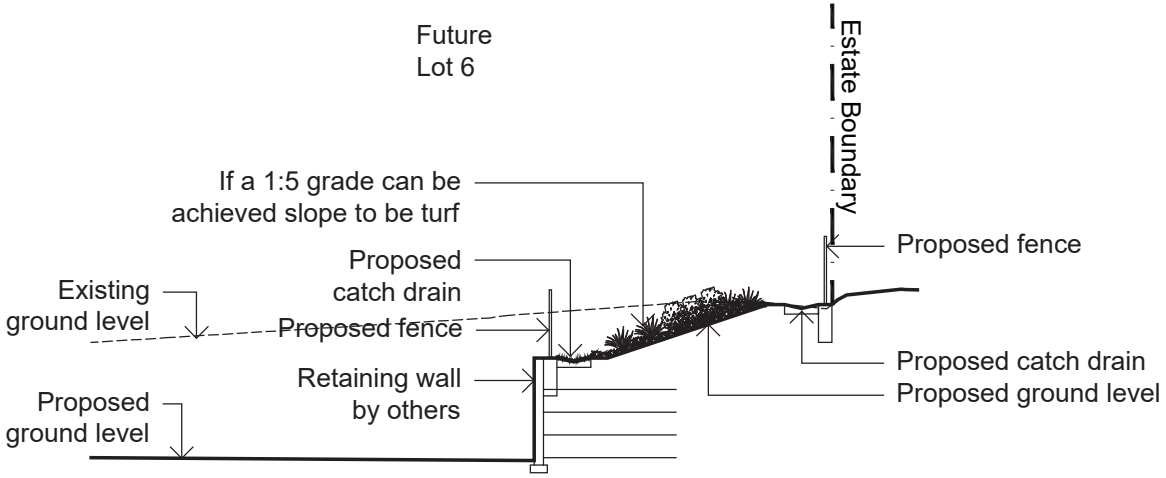
Shrub and grass planting



Security boundary fence



Section E 1:200



Section F 1:200

Boundary Planting

Boundary Botanic Name	Common Name	Mature Size (h x w) (m)	
TREES			
<i>Corymbia maculata</i> *	Spotted Gum	30 x 8	
<i>Eucalyptus crebra</i>	Narrow-leaved Ironbark		
<i>Eucalyptus eugenoides</i>	Thin-leaved Stringybark	30 x 8	
<i>Eucalyptus moluccana</i>	Grey Box		
SHRUBS & ACCENTS			
<i>Acmena smithii</i> var. minor	Lilly Pilly	2 x 2	
<i>Callistemon</i> 'Endeavour'	Bottlebrush	2x3	
<i>Dodonaea viscosa</i> subsp. <i>cuneata</i>	Wedge-leaf Hop-bush		
GRASSES AND GROUNDCOVERS			
<i>Carpobrotus glaucescens</i>	Pigface	.15 x 1	
<i>Carex inversa</i>			
<i>Hardenbergia violacea</i>	Purple Coral Pea		
<i>Gazania tomentosa</i>	Silver Gazania	.15 x 1	
<i>Myoporum parvifolium</i>	Creeping Boobialla	.3 x 2	
<i>Poa</i> 'Kingsdale'	Tussock Grass	.3 x .6	
<i>Pennisetum</i> 'Nafray'	Swamp Foxtail Grass	.6 x .6	
Indicates species from endemic vegetation community			

Indicative Species



Stormwater Basin

The Stormwater basin will feature planting to compliment the water retention and treatment processes designed by civil. A Grass-Cel maintenance pathway provides access around the perimeter of the basin at the top of the embankment. Appropriate safety fencing shall be included where necessary.

Basin Planting

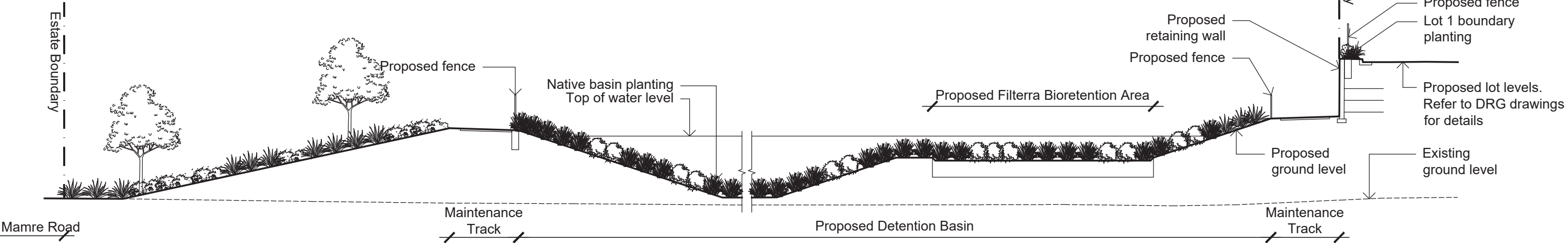
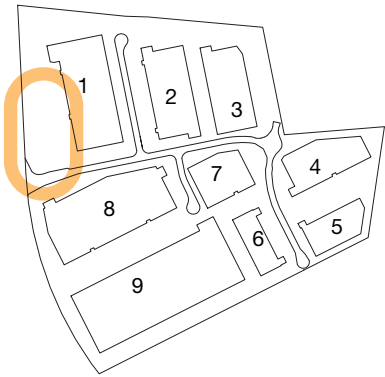
Botanic Name	Common Name	Mature Size (h x w) (m)
GRASSES AND GROUNDCOVERS		
<i>Carex inversa</i>	-	
<i>Lomandra longifolia</i>	Matt Rush	1 x 1
<i>Imperata cylindrica</i> var. <i>major</i>	Blady Grass	
<i>Juncus usitatus</i>	Common Rush	
<i>Imperata cylindrica</i> var. <i>major</i>	Blady Grass	
<i>Poa labillardieri</i>	Tussock Grass	
<i>Themeda australis</i>	Kangaroo Grass	
	Indicates species from endemic vegetation community	



Native basin planting



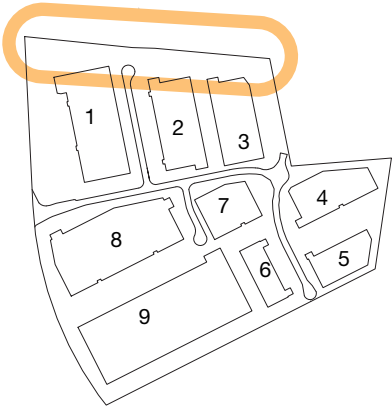
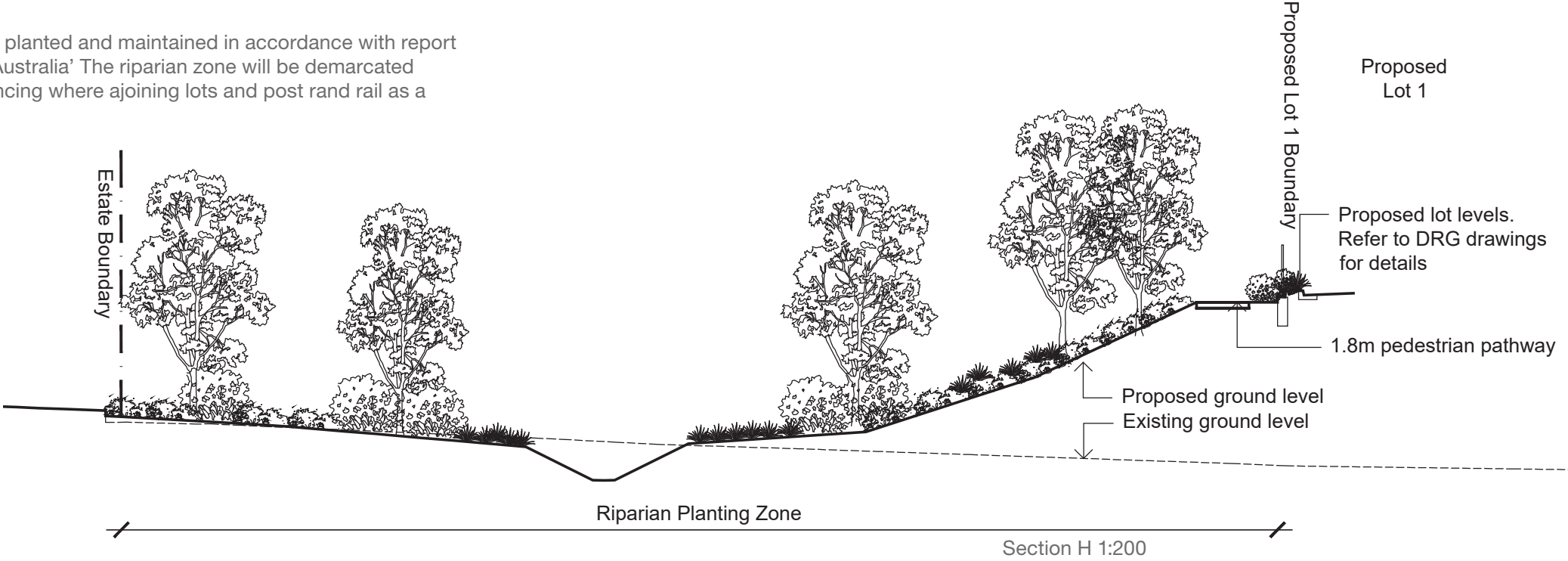
Fencing to basin



Section G 1:200

Riparian Zone

The Riparian Zone will be planted and maintained in accordance with report produced by 'Écological Australia'. The riparian zone will be demarcated with fencing - security fencing where adjoining lots and post and rail as a boundary marker style.



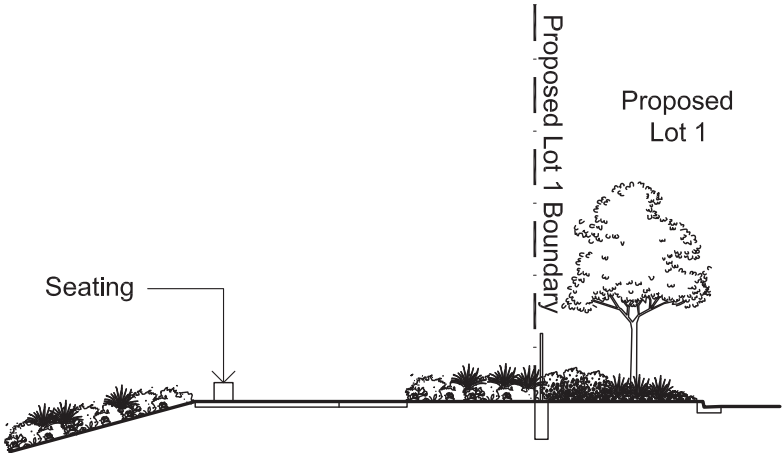
Native riparian zone planting in accordance with ecological report



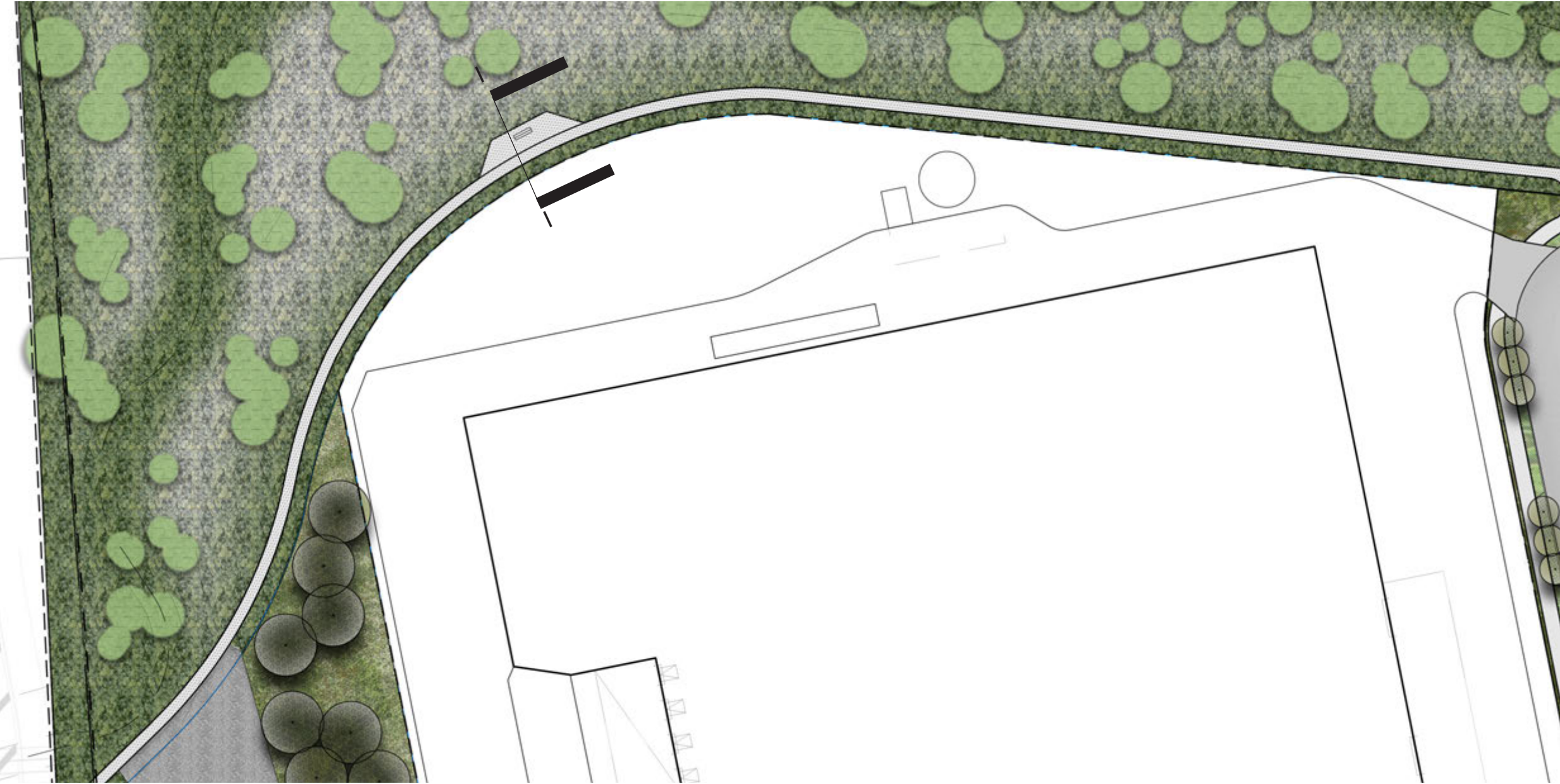
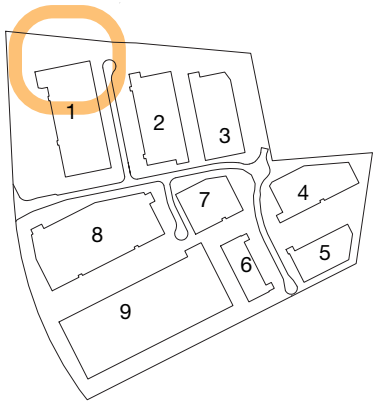
Fencing to riparian zone perimeter

Riparian Zone Pathway and Nodes

A 1.8m wide pedestrian path will provide access along the riparian zone with a number of amenity nodes featuring seating.



Section I 1:200



Seating nodes



1.8m gravel pathway

Riparian Zone Planting

Species list from ‘Ecological Australia’ vegetation communities and native species list.

Riparian Zone

Botanic Name

Eucalyptus amplifolia
Eucalyptus crebra
Eucalyptus eugenioides
Eucalyptus moluccana
Eucalyptus tereticornis
Acacia decurrens
Acacia falcata
Acacia implexa
Acacia parramattensis
Bursaria spinosa
Daviesia ulicifolia
Dillwynia sieberi
Dodonaea viscosa subsp. cuneata
Exocarpos cupressiformis
Indigofera australis
Aristida ramosa
Aristida vagans
Bothriochloa macra
Carex inversa
Chloris truncata
Dichelachne micrantha
Echinopogon caespitosus var. caespitosus
Echinopogon ovatus
Entolasia marginata
Fimbristylis dichotoma
Imperata cylindrica var. major
Juncus usitatus
Lomandra filiformis
Lomandra multiflora subsp. multiflora
Microlaena stipoides var. stipoides
Poa labillardieri
Rytidosperma caespitosum
Rytidosperma racemosa var. racemosum
Rytidosperma tenuior
Themeda australis
Asperula conferta
Brunoniella australis
Centella asiatica
Cheilanthes sieberi subsp. sieberi
Clematis glycinoides
Commelina cyanea
Desmodium varians
Dianella longifolia
Dichondra repens
Geranium solanderi
Glycine clandestina
Glycine microphylla
Glycine tabacina
Hardenbergia violacea
Plectranthus parviflorus
Pultenaea microphylla
Solanum prinophyllum

Common Name

Cabbage Gum
Narrow-leaved Ironbark
Thin-leaved Stringybark
Grey Box
Forest Red Gum +
Sydney Green Wattle
-
Hickory Wattle
Parramatta Wattle
Blackthorn
Gorse Bitter Pea
-
Wedge-leaf Hop-bush
Native Cherry
Australian Indigo
Purple Wiregrass
Threeawn Speargrass
Red Grass
-
Windmill Grass
Shorthair Plumegrass
Tufted Hedgehog Grass
Forest Hedgehog Grass
Bordered Panic
Common Fringe-sedge
Blady Grass
Common Rush
-
-
Weeping Meadow Grass
Tussock Grass
Whitetop
Wallaby Grass
-
Kangaroo Grass
-
Blue Trumpet
Indian Pennywort
Poison Rock Fern
Old Man's Beard
Creepinng Christian
Slender Tick-trefoil
Blueberry Lily
Kidney Weed
Native Geranium
Twining Glycine
Small-leaf Glycine
-
Purple Coral Pea
Cockspur Flower
-
Forest Nightshade

Indicative Species

