



17 January 2022

TfNSW Reference: SYD20/00390/08

Client Reference: SSD-10446

Director Industry Assessments  
Department of Planning, Industry and Environment  
Locked Bag 5022  
PARRAMATTA NSW 2124

Attention: Jeffrey Peng

**RESPONSE TO REQUEST FOR INFORMATION FOR THE RESOURCE RECOVERY  
CENTRE - 275 ADAMS ROAD, LUDDENHAM**

Dear Sir/Madam,

Reference is made to Department of Planning, Industry and Environment (the Department) correspondence dated 15 December 2021, regarding the abovementioned revised information of the application which was referred to Transport for NSW (TfNSW) for review.

TfNSW has reviewed the submitted information and raises no further comment to this Response to Submissions subject to the requirements included in the TfNSW's response, dated 6 August 2021, remaining applicable.

TfNSW also notes that the proposed upgrade of the Elizabeth Drive/Adams Road intersection should be consistent with the Strategic Concept Design, being included in the applicant's Response to TfNSW's submission, dated 16 July 2021, which is included in the attachment for the Department's reference.

If you have any further questions, Mr. Felix Liu would be pleased to take your call on 8849 2113 or email [development.sydney@transport.nsw.gov.au](mailto:development.sydney@transport.nsw.gov.au). I hope this has been of assistance.

Yours sincerely,

A handwritten signature in black ink, appearing to read 'Malgy'.

**Malgy Coman**  
Senior Land Use Planner



# LUDDENHAM ELIZABETH DRIVE - ADAMS ROAD INTERSECTION UPGRADE

## STRATEGIC CONCEPT DESIGN

JULY 2021



LOCALITY PLAN

NAME	DRAWING TITLE
7472-CD-008	COVER SHEET
7472-CD-001	KEY PLAN
7472-CD-011	ROADWORKS PLAN SHEET 1 OF 2
7472-CD-012	ROADWORKS PLAN SHEET 2 OF 2
7472-CD-015	STORMWATER MANAGEMENT PLAN
7472-CD-021	TURNING MOVEMENTS PLAN SHEET 1 OF 2
7472-CD-022	TURNING MOVEMENTS PLAN SHEET 2 OF 2

DRAWING SCHEDULE

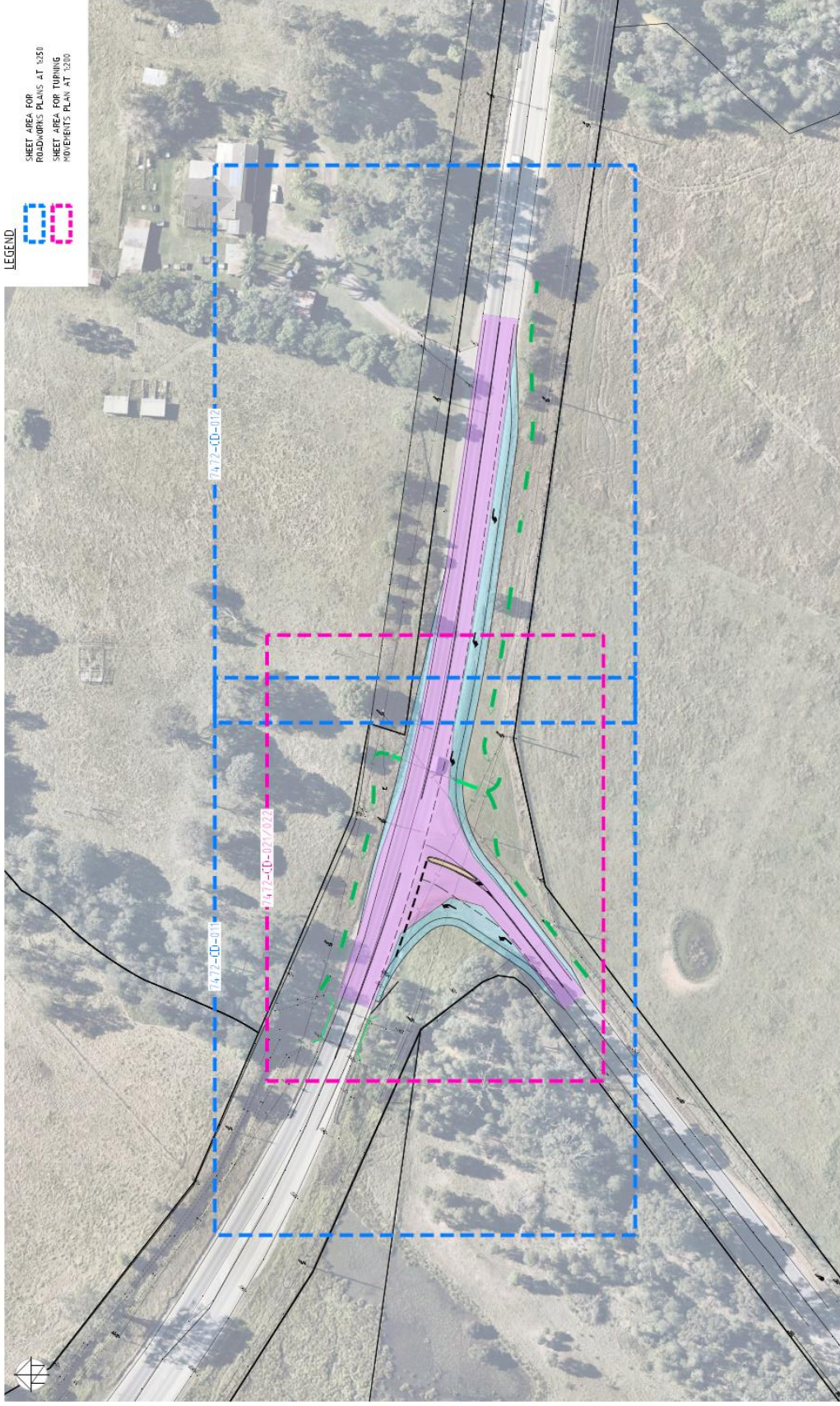


**COOMBES**  
PROPERTY GROUP



7472-CD-000





LEGEND

SHEET AREA FOR  
ROADWORKS PLANS AT 1:250  
SHEET AREA FOR TURNING  
MOVEMENTS PLAN AT 1:200

KEY PLAN  
SCALE 1:500

AT PLANT  
1:500

NO.	REVISION	DATE	BY	CHKD.	APPD.
1	ISSUED FOR TENDERS	20/01/2021	PM	PM	PM

CLIENT



DESIGNED BY	DATE	APPROVED BY	DATE
DESIGNED BY	DATE	APPROVED BY	DATE
DESIGNED BY	DATE	APPROVED BY	DATE

PROJECT  
ELIZABETH DRIVE - ADAMS  
ROAD INTERSECTION  
UPGRADE

KEY PLAN

PROJECT No. 7472-CD  
DRAWING No. 001  
SHEET B



DRAWING TITLE <b>ROADWORKS PLAN</b> <b>SHEET 1 OF 2</b>	DRAWING NO. <b>011</b>	AMOUNT <b>B</b>
PROJECT NO. <b>7472-CD</b>		



PROJECT  
ELIZABETH DRIVE - ADAMS  
ROAD INTERSECTION  
UPGRADE

DRAWING TITLE  
**ROADWORKS PLAN**  
**SHEET 1 OF 2**





**ROADWORKS PLAN**  
SCALE 1:250



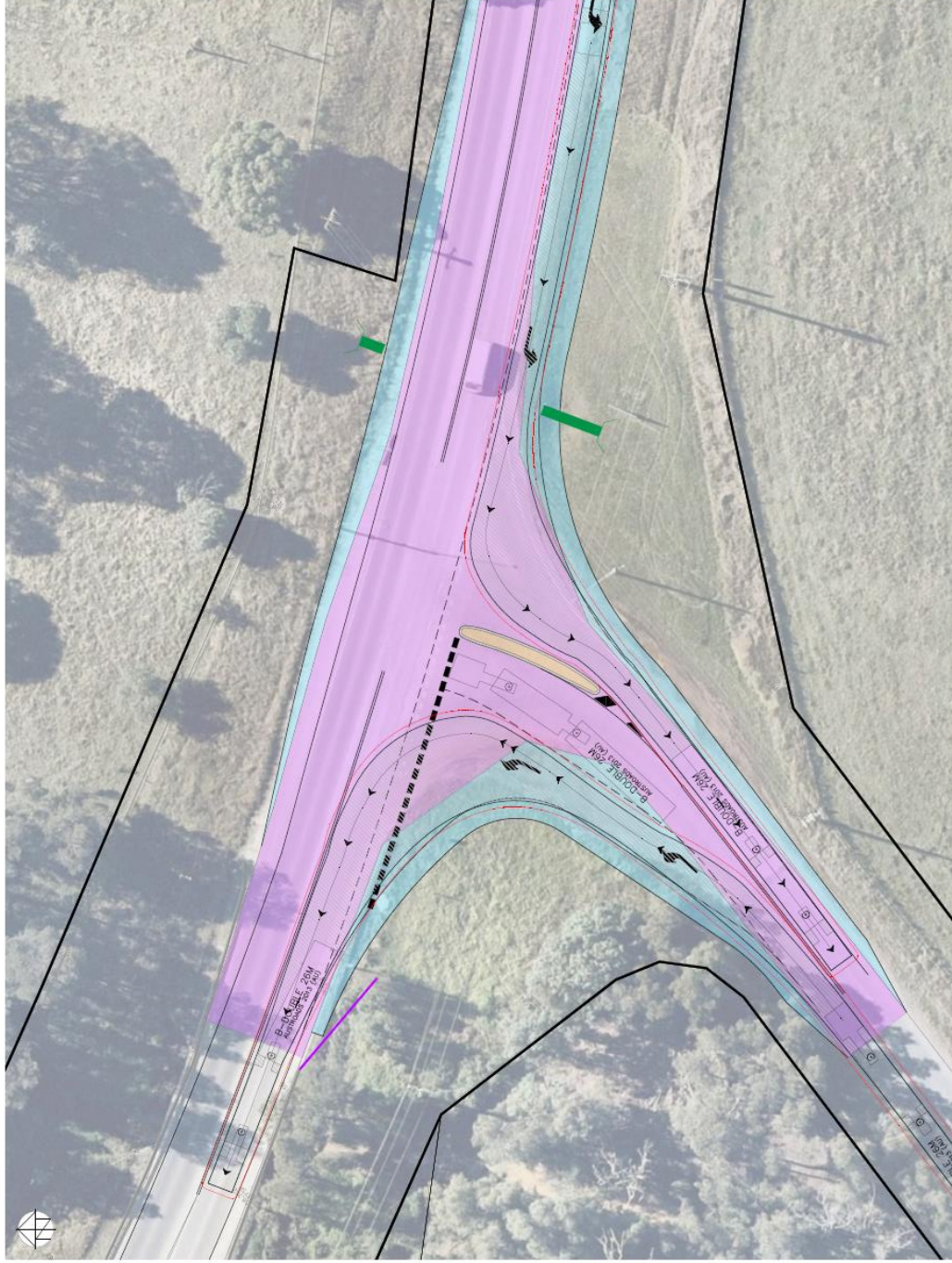
**LEGEND**

	LOT BOUNDARY		NEW PAVEMENT
	ELECTRICITY OVERHEAD POLE STREETLIGHT		PAVEMENT OVERLAY
	STORMWATER HEADWALL		PAVED CONCRETE MEDIAN
	GUARDRAIL		LINE MARKING
	CONTOUR MAJOR		PAVEMENT ARROW MARKING TAB
	CONTOUR MINOR		500 CODE
			KEFB
			500B
			500A
			500C
			500D
			500E
			500F
			500G
			500H
			500I
			500J
			500K
			500L
			500M
			500N
			500O
			500P
			500Q
			500R
			500S
			500T
			500U
			500V
			500W
			500X
			500Y
			500Z
			500AA
			500AB
			500AC
			500AD
			500AE
			500AF
			500AG
			500AH
			500AI
			500AJ
			500AK
			500AL
			500AM
			500AN
			500AO
			500AP
			500AQ
			500AR
			500AS
			500AT
			500AU
			500AV
			500AW
			500AX
			500AY
			500AZ
			500BA
			500BB
			500BC
			500BD
			500BE
			500BF
			500BG
			500BH
			500BI
			500BJ
			500BK
			500BL
			500BM
			500BN
			500BO
			500BP
			500BQ
			500BR
			500BS
			500BT
			500BU
			500BV
			500BW
			500BX
			500BY
			500BZ
			500CA
			500CB
			500CC
			500CD
			500CE
			500CF
			500CG
			500CH
			500CI
			500CJ
			500CK
			500CL
			500CM
			500CN
			500CO
			500CP
			500CQ
			500CR
			500CS
			500CT
			500CU
			500CV
			500CW
			500CX
			500CY
			500CZ
			500DA
			500DB
			500DC
			500DD
			500DE
			500DF
			500DG
			500DH
			500DI
			500DJ
			500DK
			500DL
			500DM
			500DN
			500DO
			500DP
			500DQ
			500DR
			500DS
			500DT
			500DU
			500DV
			500DW
			500DX
			500DY
			500DZ
			500EA
			500EB
			500EC
			500ED
			500EE
			500EF
			500EG
			500EH
			500EI
			500EJ
			500EK
			500EL
			500EM
			500EN
			500EO
			500EP
			500EQ
			500ER
			500ES
			500ET
			500EU
			500EV
			500EW
			500EX
			500EY
			500EZ
			500FA
			500FB
			500FC
			500FD
			500FE
			500FF
			500FG
			500FH
			500FI
			500FJ
			500FK
			500FL
			500FM
			500FN
			500FO
			500FP
			500FQ
			500FR
			500FS
			500FT
			500FU
			500FV
			500FW
			500FX
			500FY
			500FZ
			500GA
			500GB
			500GC
			500GD
			500GE
			500GF
			500GG
			500GH
			500GI
			500GJ
			500GK
			500GL
			500GM
			500GN
			500GO
			500GP
			500GQ
			500GR
			500GS
			500GT
			500GU
			500GV
			500GW
			500GX
			500GY
			500GZ
			500HA
			500HB
			500HC
			500HD
			500HE
			500HF
			500HG
			500HH
			500HI
			500HJ
			500HK
			500HL
			500HM
			500HN
			500HO
			500HP
			500HQ
			500HR
			500HS
			500HT
			500HU
			500HV
			500HW
			500HX
			500HY
			500HZ
			500IA
			500IB
			500IC
			500ID
			500IE
			500IF
			500IG
			500IH
			500II
			500IJ
			500IK
			500IL
			500IM
			500IN
			500IO
			500IP
			500IQ
			500IR
			500IS
			500IT
			500IU
			500IV
			500IW
			500IX
			500IY
			500IZ
			500JA
			500JB
			500JC
			500JD
			500JE
			500JF
			500JG
			500JH
			500JI
			500JJ
			500JK
			500JL
			500JM
			500JN
			500JO
			500JP
			500JQ
			500JR
			500JS
			500JT
			500JU
			500JV
			500JW

[illegible]





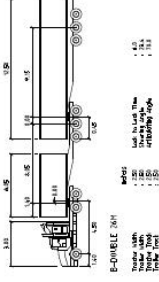


LEGEND

EXISTING LOT BOUNDARY  
GUARDRAIL

PROPOSED  
NEW PAVEMENT  
PAVEMENT OVERLAY  
RAISED CONCRETE MEDIAN  
LINE/PAVING  
KERB  
GUARDRAIL

VEHICLE PROFILE



NOTE  
A VEHICLE CLEARANCE OF 0.5m HAS BEEN USED



TURNUS LEFT  
SCALE 1:500

NO.	REVISION	DATE	BY	APPROVED
1	ISSUED FOR PERMIT	10/10/2023	AM	AM

CLIENT

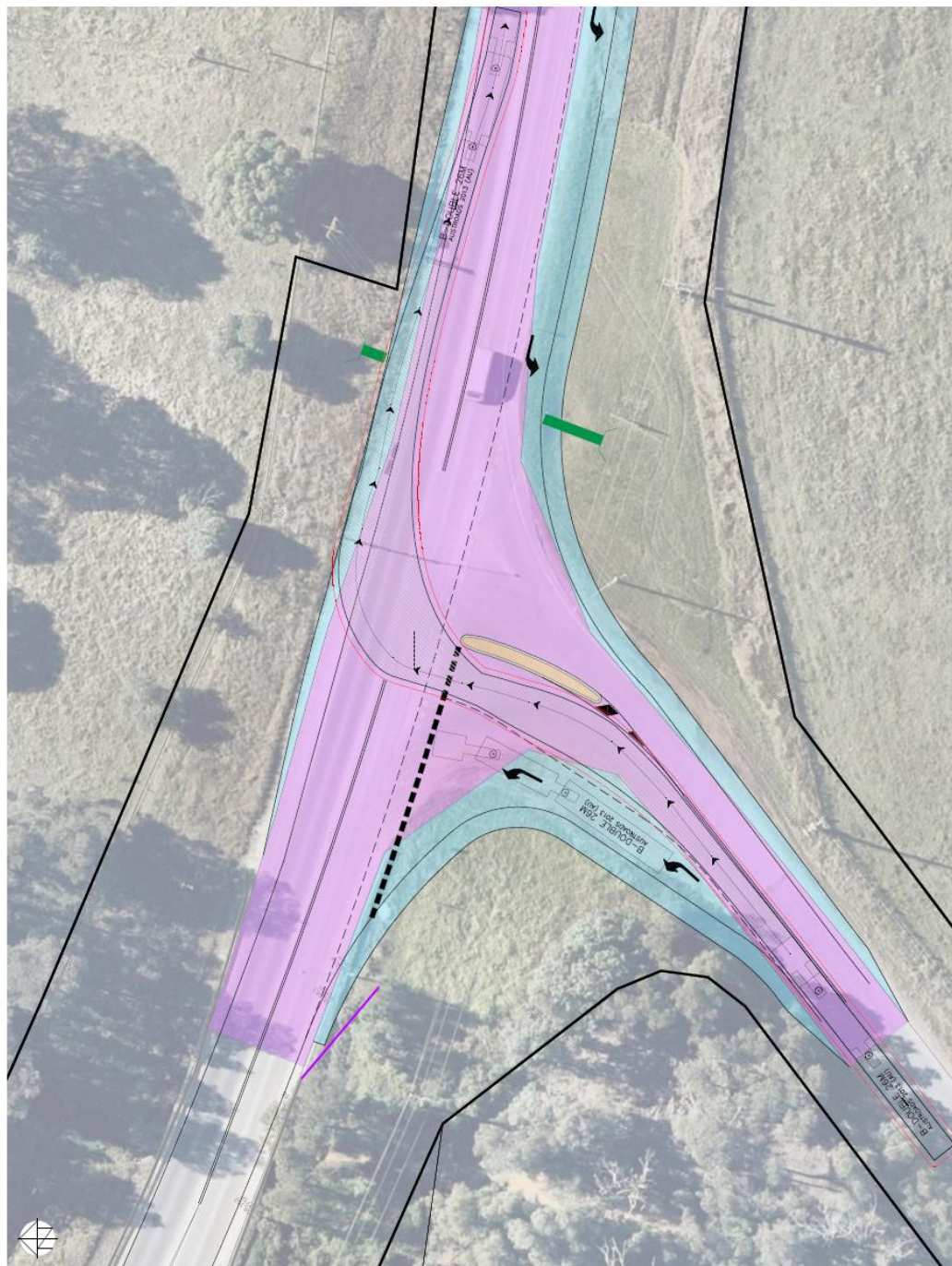


APPROVED	DATE
AM	10/10/2023
DESIGNED BY	DATE
AM	10/10/2023
DESIGNED BY	DATE
AM	10/10/2023
DESIGNED BY	DATE
AM	10/10/2023

ELIZABETH DRIVE - ADAMS  
ROAD INTERSECTION  
UPGRADE

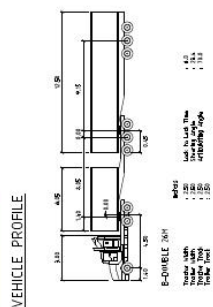
PROJECT TITLE	TURNING MOVEMENTS PLAN
SHEET 1 OF 2	
PROJECT NO.	7472-CD
DRAWING NO.	021
DATE	B





### LEGEND

EXISTING LOT BOUNDARY GUARDRAIL



**NOTE**  
VEHICLE CLEARANCE OF 0.5m HAS BEEN USED.

[illegible]

ENT



**Proc**

ELIZABETH DRIVE - ADAMS  
ROAD INTERSECTION  
UPGRADE

Downloaded from <http://ajphaphysocpharm.com/>

TURNING MOVEMENTS PLAN  
SHEET 2 OF 2

PROJECT No.	7472-CD	DRAWING No.	022	AMC	B
-------------	---------	-------------	-----	-----	---