

DILAPIDATION REPORT

Of the

Council Assets/Public Infrastructure

Adjacent to the proposed development at:

**WATERLOO STATION
COPE STREET**

Prepared For:

**JOHN HOLLAND PTY LTD
LEVEL 3, 65 PIRRAMA ROAD
PYRMONT NSW 2009**

Prepared By:

DEMLAKIAN CONSULTING ENGINEERS

30 January 2023

SYDNEY • LONDON • BRISBANE



1.0 INTRODUCTION

Demlakian Consulting Engineers were engaged to carry out a visual and non-destructive pre-construction inspection of the Council assets/public infrastructure on Raglan Street and Botany Road in the indicated locations as illustrated in the Key Plan in Appendix A and prepare a pre-construction dilapidation report.

The purpose of the inspection and report is to document and record the general condition of the roadway, kerb, gutter, driveway, footpaths, street signs or any other Council assets in the vicinity of the proposed development and site access.

Our inspection was carried out by a suitably qualified engineer from our firm on 27 January 2022.

Please note that this report should be read in conjunction with the 'Conditions of Report' in section 4.0 and similarly, we have attached the accompanying photos in Appendix B, both located at the rear of this report.

2.0 THE INSPECTION

The Council assets inspected are located to the North (Raglan Street) and West (Botany Road) of the Waterloo Station project.

This report is based on a visual inspection only, performed at ground level.

The photographs are generally in chronological order and follow on from the previous photograph.

The council property outside Waterloo Station Project was visually examined and photographs taken of the overall condition and any damage to the roadway, kerb, gutter, footpaths, street signs and any other council assets in the vicinity of the proposed development.

3.0 SUMMARY OF OBSERVATIONS

The Raglan Street footpath presents an uneven surface which is a combination of concrete pavement and asphalt. Generally, the footpath is affected by minor cracking (especially in the concrete pavement). The most dilapidated footpath's section was observed to be the concrete gutter which is affected by diffuse cracking.

The Botany Road footpath is mostly concrete pavement with some parts being asphalt. Botany Road footpath, kerb and gutter was generally in good condition with some minor cracking to the



footpath in marginal locations. Notwithstanding the above, the footpath surface was found to be uneven in multiple locations.

Additionally, areas of cracked asphalt were recorded along Botany Road.

4.0 CONDITIONS OF REPORT

This report is prepared for the exclusive use of the Client and may not be copied in part or in full without the prior written consent of Demlakian Consulting Engineers.

This report is prepared solely to address the issues specified in section 1.0 of the report and may not be suitable for any other purpose.

Please note that whilst every effort has been made to capture all relevant features, various items which may be obscured or concealed may not be included.

Site inspection are visual and non-destructive in nature and therefore the observations made in this report do not include degradation of unexposed components.

If any concern exists for any of the above exclusions, then further investigation in greater depth may be required.

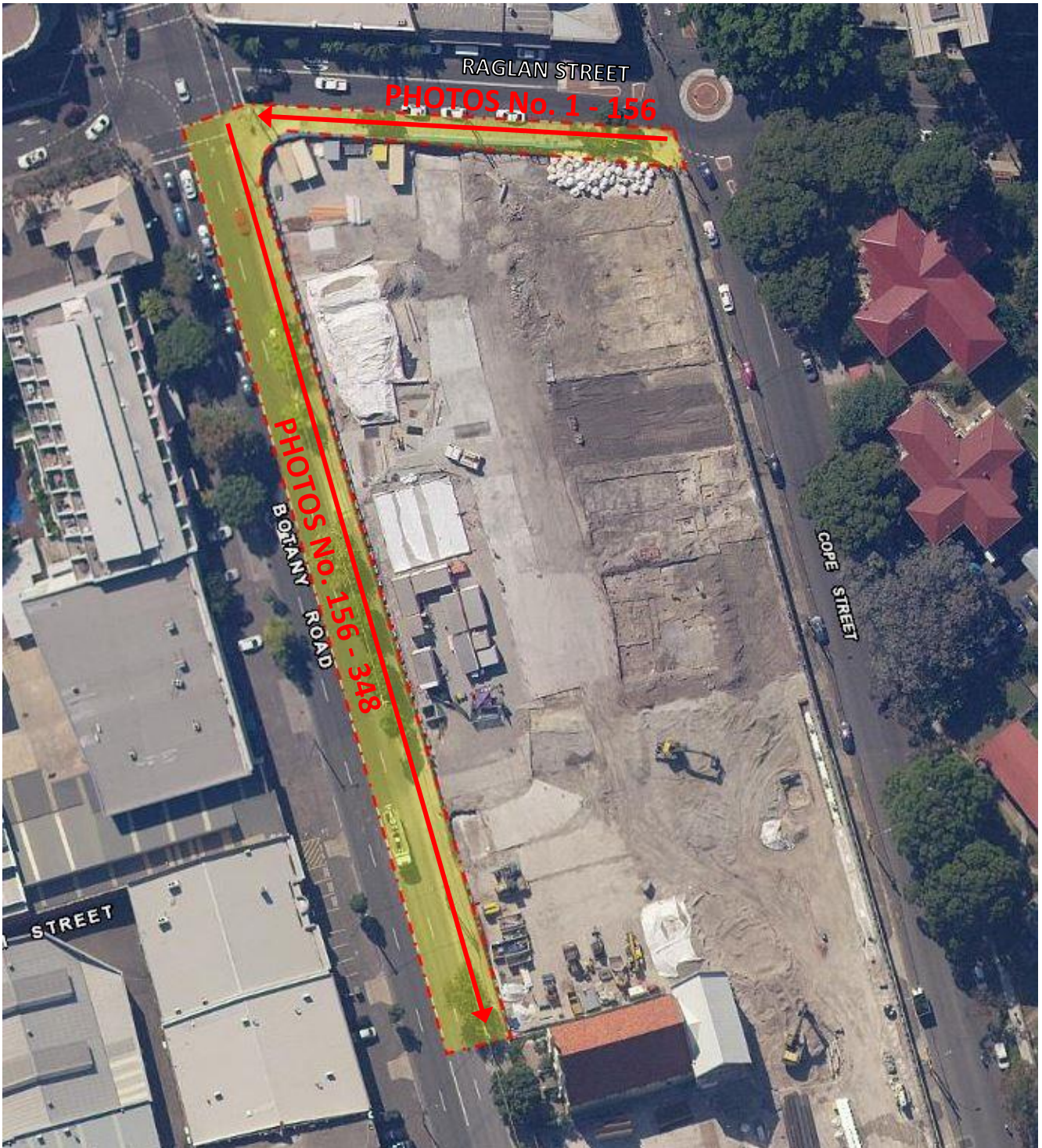
Yours faithfully,

Marek Blaszcakiewicz
MEng, Grad DipBus, MIEAust, CPEng, NER, RPEQ
Director
DEMLAKIAN CONSULTING ENGINEERS



APPENDIX A

Key Plan





APPENDIX B

Photographs



PHOTO 1

(Overview of starting point of dilapidation inspection - Raglan Street)



PHOTO 2

(Overview of starting point of dilapidation inspection - Raglan Street)



PHOTO 3

(Photo showing cracked and missing concrete in footpath adjacent stormwater pit)



PHOTO 4

(Photo showing cracked concrete kerb – Raglan Street)



PHOTO 5

(Photo showing cracks and missing concrete in kerb – Raglan Street)



PHOTO 6

(Photo showing cracked and missing concrete in kerb – Raglan Street)



PHOTO 7
(Overview of uneven footpath – Raglan Street)



PHOTO 8
(Photo showing crack in footpath and kerb – Raglan Street)



PHOTO 9

(Photo showing cracks in footpath and kerb adjacent cable pits – Raglan Street)



PHOTO 10

(Photo showing cracks around cable pit – Raglan Street)



PHOTO 11

(Photo showing crack in footpath and kerb adjacent stormwater pit – Raglan Street)



PHOTO 12

(Overview of footpath – Raglan Street)



PHOTO 13
(Overview of electricity pole – Raglan Street)



PHOTO 14
(Overview of footpath – Raglan Street)



PHOTO 15

(Photo showing cracked footpath and gutter – Raglan Street)



PHOTO 16

(Photo showing crack in footpath – Raglan Street)



PHOTO 17

(Photo showing cracked kerb and gutter – Raglan Street)



PHOTO 18

(Photo showing cracked kerb and gutter – Raglan Street)



PHOTO 19
(Photo showing cracked gutter – Raglan Street)



PHOTO 20
(Photo showing cracked kerb and gutter – Raglan Street)



PHOTO 21

(Photo showing cracks in footpath developing from electricity pole's former location – Raglan Street)



PHOTO 22

(Photo showing cracks in footpath, kerb and gutter – Raglan Street)



PHOTO 23

(Photo showing cracks in kerb and gutter – Raglan Street)



PHOTO 24

(Photo showing cracks in kerb and gutter – Raglan Street)



PHOTO 25
(Photo showing cracks in gutter – Raglan Street)

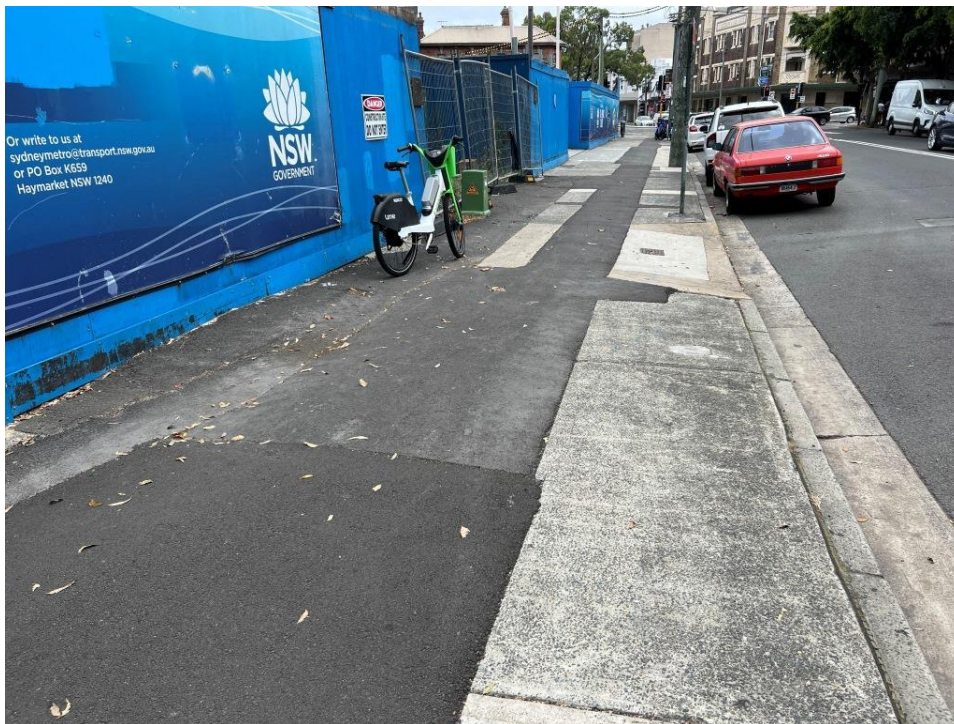


PHOTO 26
(Overview of footpath – Raglan Street)



PHOTO 27
(Overview of footpath – Raglan Street)



PHOTO 28
(Photo showing uneven footpath – Raglan Street)



PHOTO 29
(Overview of footpath – Raglan Street)



PHOTO 30
(Photo included for location reference only)



PHOTO 31

(Photo showing crack in footpath and crack/missing concrete in gutter – Raglan Street)



PHOTO 32

(Photo showing crack/missing concrete in gutter – Raglan Street)



PHOTO 33

(Photo showing crack at end of footpath's saw cut joint – Raglan Street)



PHOTO 34

(Overview of footpath – Raglan Street)

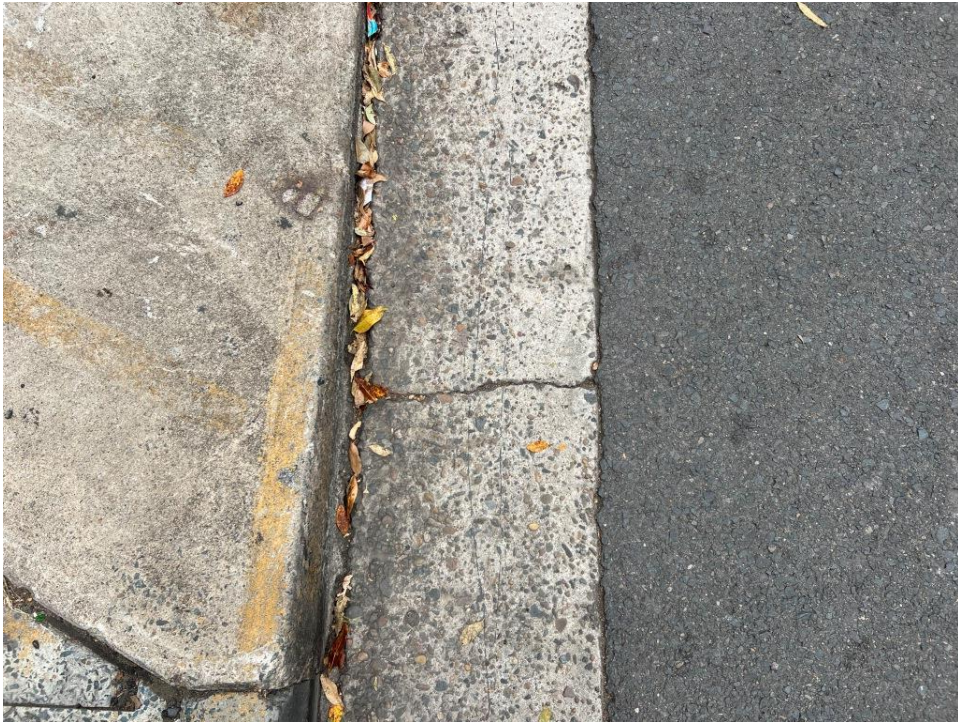


PHOTO 35

(Photo showing crack in gutter – Raglan Street)

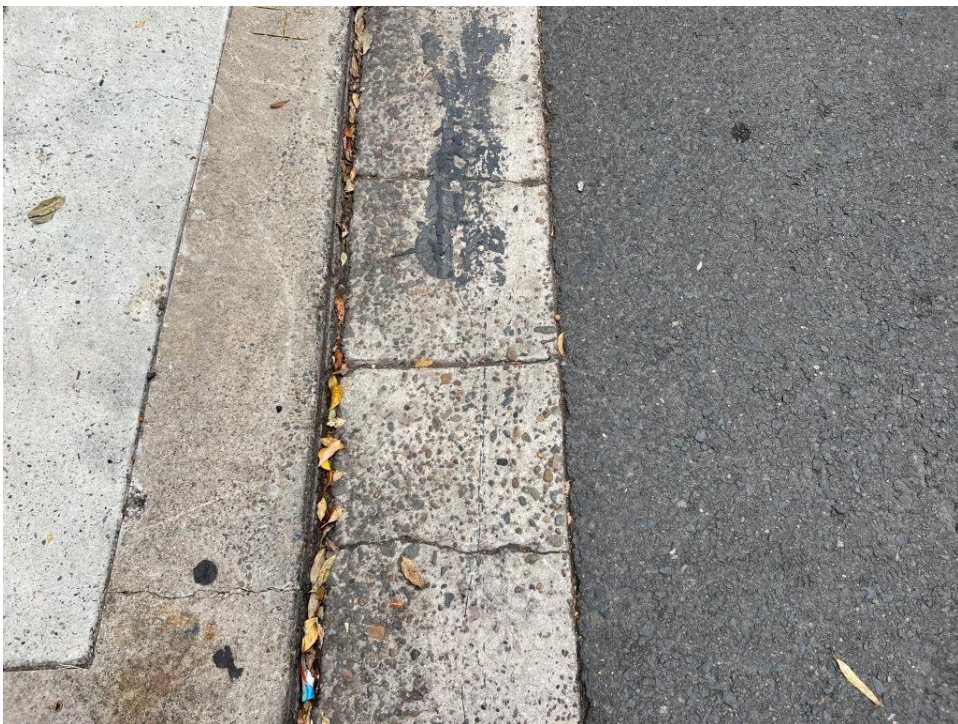


PHOTO 36

(Photo showing cracks in gutter – Raglan Street)



PHOTO 37

(Photo showing crack/missing concrete in gutter – Raglan Street)



PHOTO 38

(Photo showing cracks/missing concrete in gutter – Raglan Street)



PHOTO 39

(Photo showing cracks/missing concrete in gutter – Raglan Street)



PHOTO 40

(Photo showing cracks in footpath and gutter – Raglan Street)



PHOTO 41
(Photo showing cracks in footpath – Raglan Street)



PHOTO 42
(Overview of footpath – Raglan Street)



PHOTO 43

(Photo showing crack in footpath/kerb – Raglan Street)



PHOTO 44

(Overview of footpath, kerb and gutter – Raglan Street)



PHOTO 45

(Photo showing cracks in gutter – Raglan Street)



PHOTO 46

(Photo showing crack in footpath – Raglan Street)



PHOTO 47

(Photo showing cracks in gutter – Raglan Street)



PHOTO 48

(Photo showing crack in footpath – Raglan Street)



PHOTO 49

(Photo showing crack in footpath – Raglan Street)



PHOTO 50

(Overview of footpath – Raglan Street)



PHOTO 51

(Photo included for location reference only)



PHOTO 52

(Photo showing cracks in gutter – Raglan Street)



PHOTO 53

(Photo showing cracks in gutter – Raglan Street)

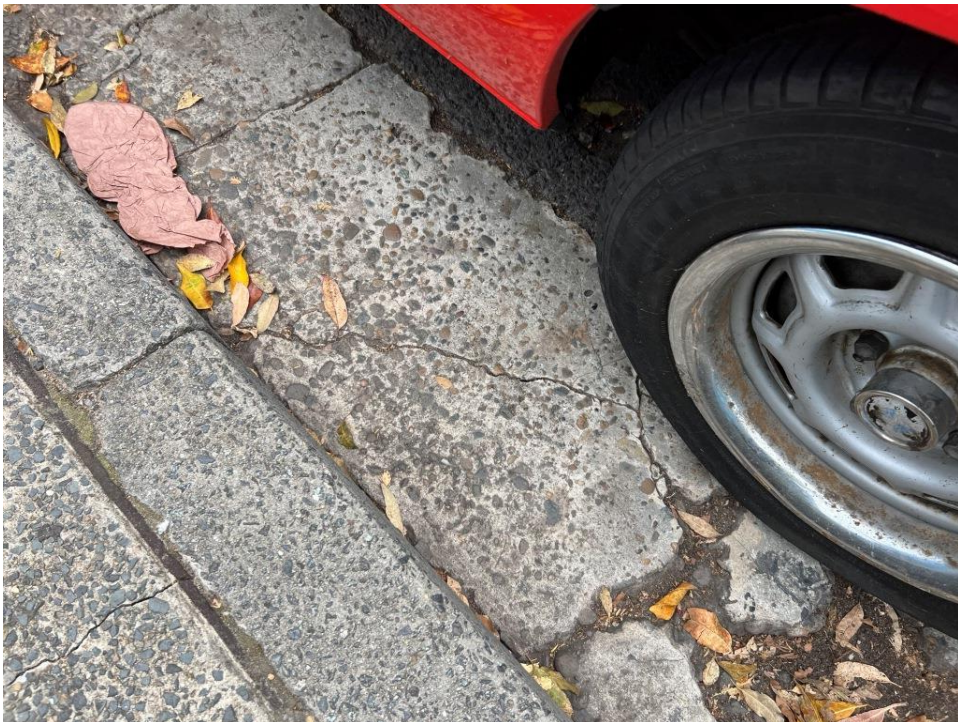


PHOTO 54

(Photo showing cracks in gutter – Raglan Street)



PHOTO 55

(Photo showing cracks in gutter – Raglan Street)



PHOTO 56

(Photo showing cracks in gutter – Raglan Street)



PHOTO 57

(Photo showing crack in footpath – Raglan Street)



PHOTO 58

(Photo showing uneven footpath – Raglan Street)



PHOTO 59

(Overview of recessed area of site fence – Raglan Street)

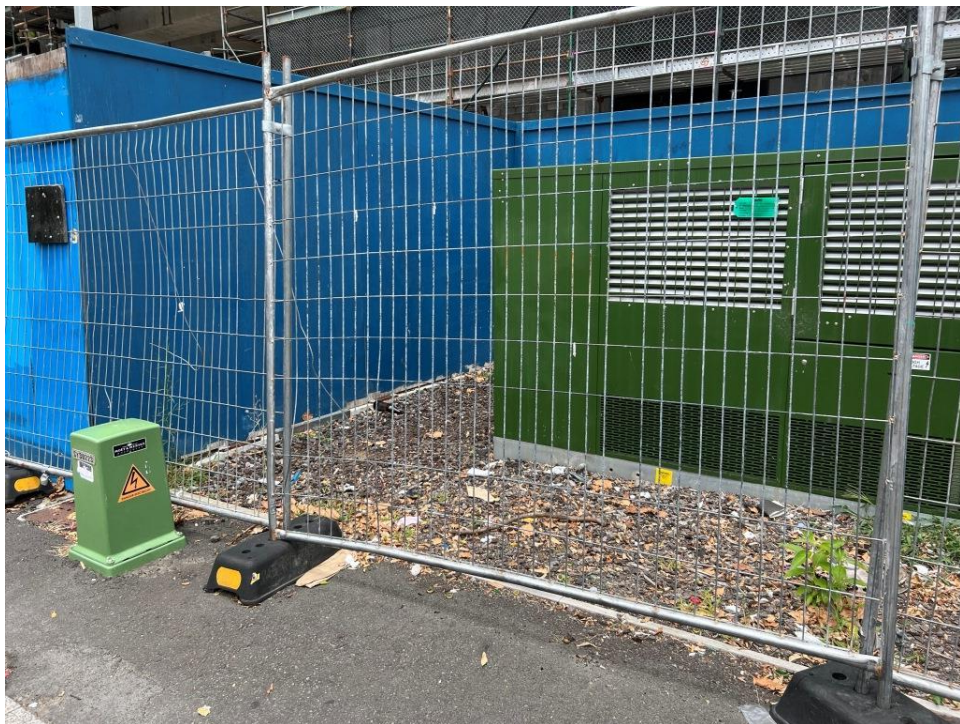


PHOTO 60

(Overview of recessed area of site fence – Raglan Street)



PHOTO 61
(Photo showing damaged parking sign – Raglan Street)

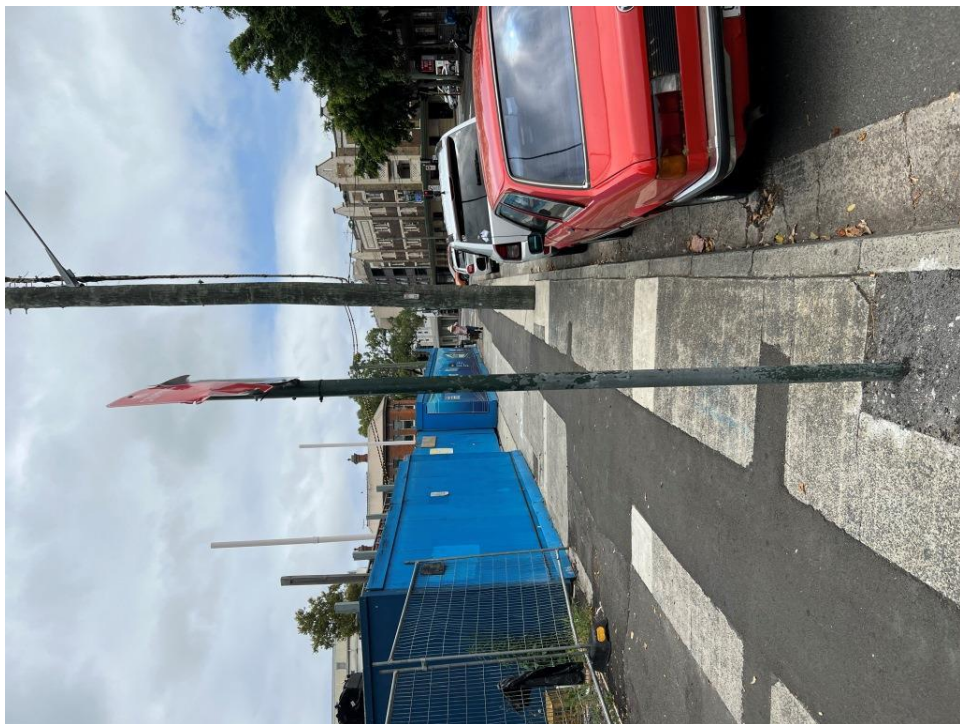


PHOTO 62
(Overview of parking sign – Raglan Street)



PHOTO 63

(Photo showing crack in footpath – Raglan Street)

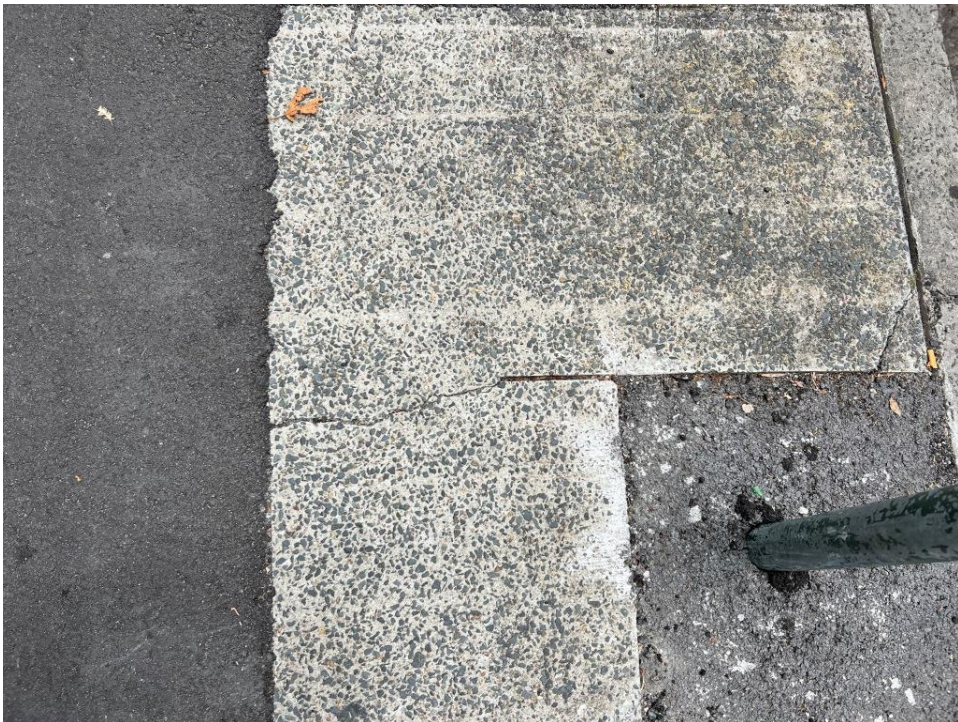


PHOTO 64

(Photo showing crack in footpath – Raglan Street)



PHOTO 65
(Photo showing crack in footpath – Raglan Street)



PHOTO 66
(Overview of footpath – Raglan Street)



PHOTO 67

(Photo showing cracks in gutter – Raglan Street)



PHOTO 68

(Photo showing cracks in gutter and chipped concrete in kerb – Raglan Street)



PHOTO 69

(Photo showing cracks/missing concrete in gutter – Raglan Street)



PHOTO 70

(Photo showing cracks in footpath, kerb and gutter – Raglan Street)



PHOTO 71
(Photo showing cracks in gutter – Raglan Street)



PHOTO 72
(Overview of footpath – Raglan Street)



PHOTO 73

(Photo showing crack in footpath – Raglan Street)



PHOTO 74

(Photo showing uneven footpath – Raglan Street)



PHOTO 75

(Photo showing condition of electricity pole – Raglan Street)



PHOTO 76

(Photo showing condition of electricity pole – Raglan Street)



PHOTO 77

(Photo showing crack in footpath – Raglan Street)



PHOTO 78

(Photo showing cracked gutter adjacent truck driveway – Raglan Street)



PHOTO 79
(Overview of truck driveway – Raglan Street)



PHOTO 80
(Overview of truck driveway – Raglan Street)



PHOTO 81
(Overview of truck driveway – Raglan Street)



PHOTO 82
(Photo showing footpath's condition adjacent to truck driveway – Raglan Street)



PHOTO 83

(Photo showing footpath's condition adjacent to truck driveway – Raglan Street)



PHOTO 84

(Photo showing cracks in gutter in front of truck driveway – Raglan Street)

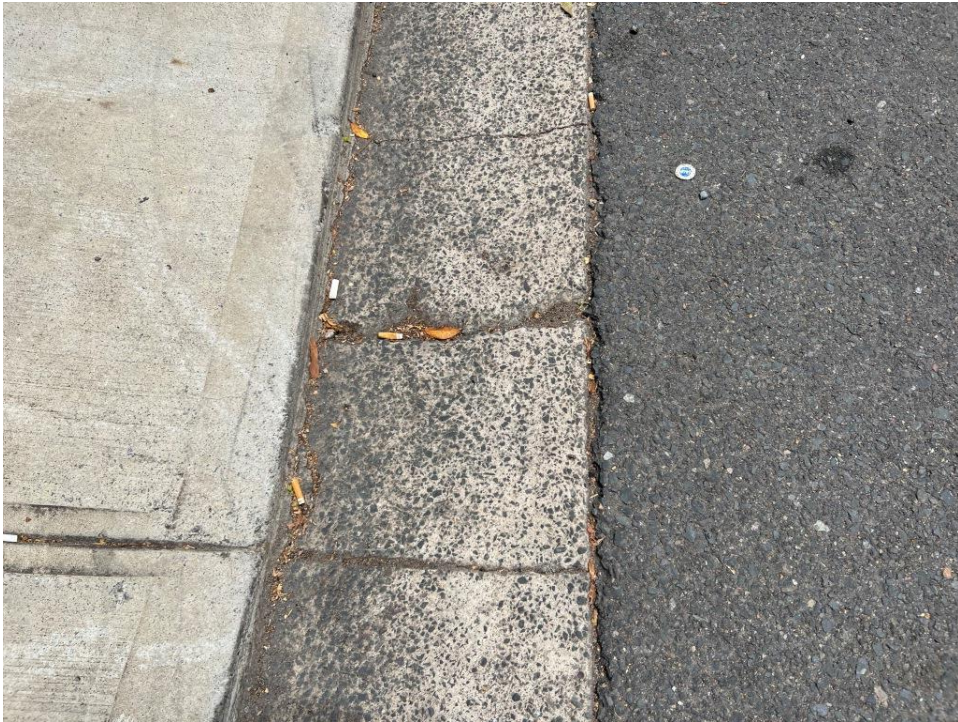


PHOTO 85

(Photo showing cracks in gutter in front of truck driveway – Raglan Street)

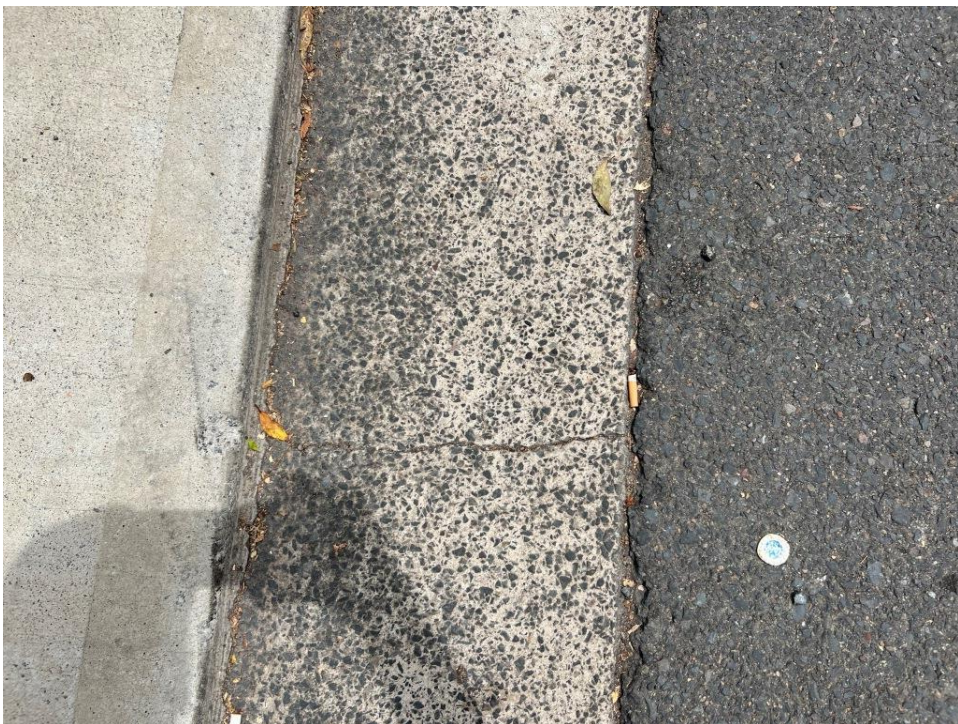


PHOTO 86

(Photo showing crack in gutter in front of truck driveway – Raglan Street)



PHOTO 87

(Photo showing crack in gutter in front of truck driveway – Raglan Street)



PHOTO 88

(Photo showing cracks in gutter in front of truck driveway – Raglan Street)



PHOTO 89

(Photo showing footpath's condition adjacent to truck driveway – Raglan Street)



PHOTO 90

(Photo showing footpath's condition adjacent to truck driveway – Raglan Street)



PHOTO 91

(Photo showing cracks in gutter in front of truck driveway – Raglan Street)



PHOTO 92

(Photo showing footpath's condition adjacent to truck driveway – Raglan Street)



PHOTO 93
(Overview of footpath – Raglan Street)

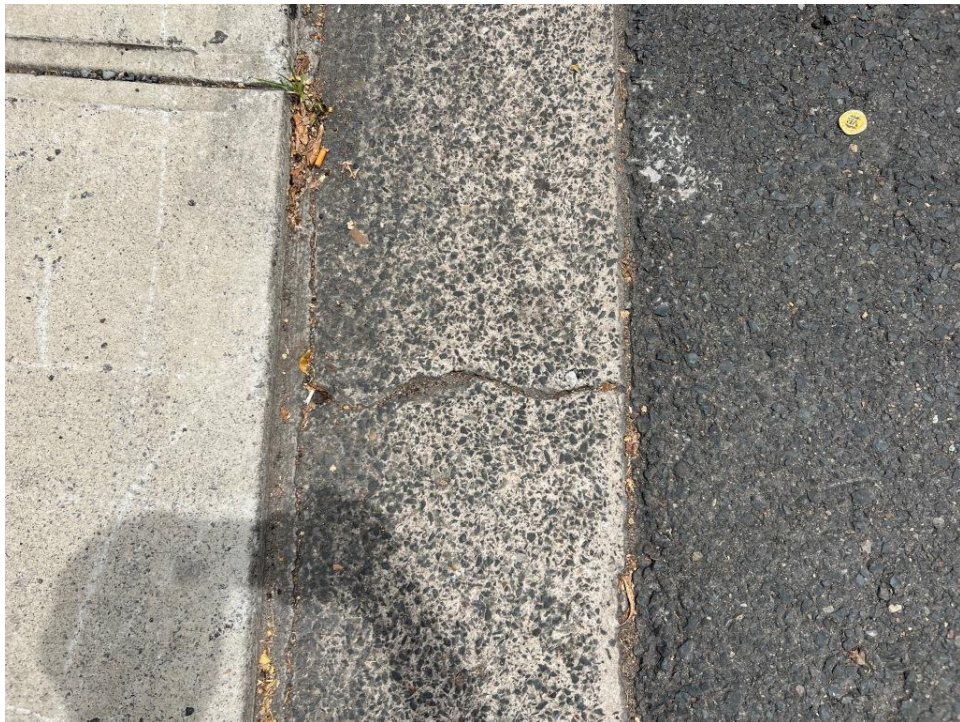


PHOTO 94
(Photo showing crack in gutter in front of truck driveway – Raglan Street)



PHOTO 95

(Photo showing cracks in gutter in front of truck driveway – Raglan Street)

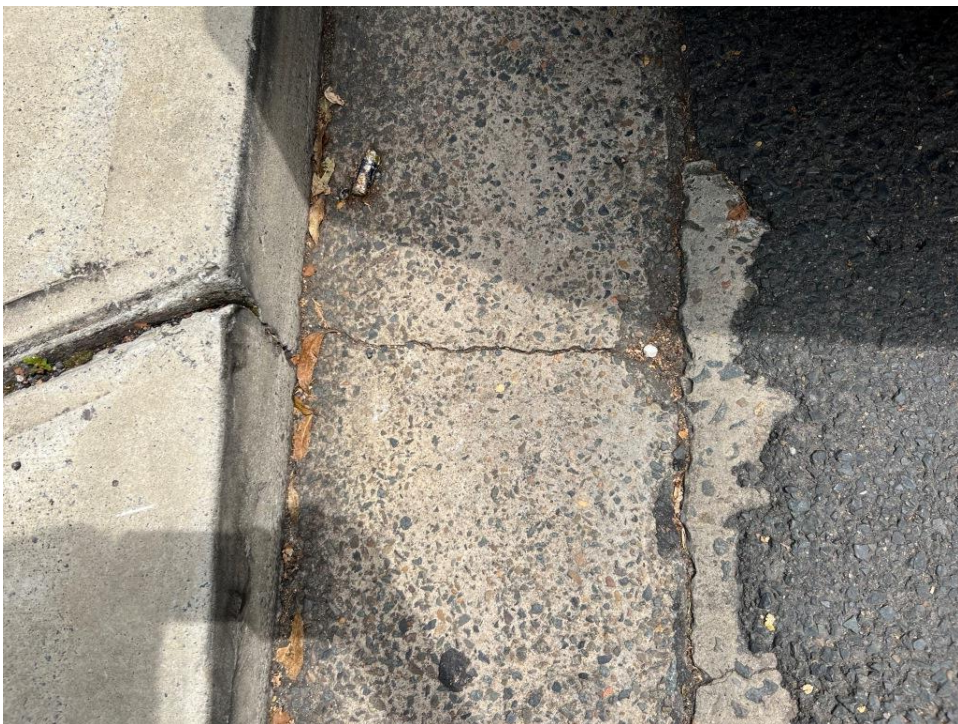


PHOTO 96

(Photo showing crack in gutter in front of truck driveway – Raglan Street)



PHOTO 97

(Photo showing cracks in footpath – Raglan Street)



PHOTO 98

(Photo showing crack in footpath – Raglan Street)



PHOTO 99
(Overview of footpath – Raglan Street)



PHOTO 100
(Photo showing crack in gutter – Raglan Street)



PHOTO 101

(Photo showing condition of footpath – Raglan Street)



PHOTO 102

(Photo showing condition of footpath – Raglan Street)



PHOTO 103

(Photo showing crack/missing concrete in footpath – Raglan Street)



PHOTO 104

(Photo showing crack/missing concrete in footpath – Raglan Street)



PHOTO 105

(Photo showing crack/missing concrete in footpath – Raglan Street)



PHOTO 106

(Overview of footpath – Raglan Street)



PHOTO 107
(Overview of footpath – Raglan Street)



PHOTO 108
(Photo showing condition of footpath around pit – Raglan Street)



PHOTO 109

(Photo showing crack in footpath – Raglan Street)



PHOTO 110

(Photo showing cracks in footpath – Raglan Street)



PHOTO 111

(Photo showing cracks in footpath – Raglan Street)



PHOTO 112

(Photo showing crack in gutter – Raglan Street)



PHOTO 113

(Photo showing crack/missing concrete in gutter – Raglan Street)

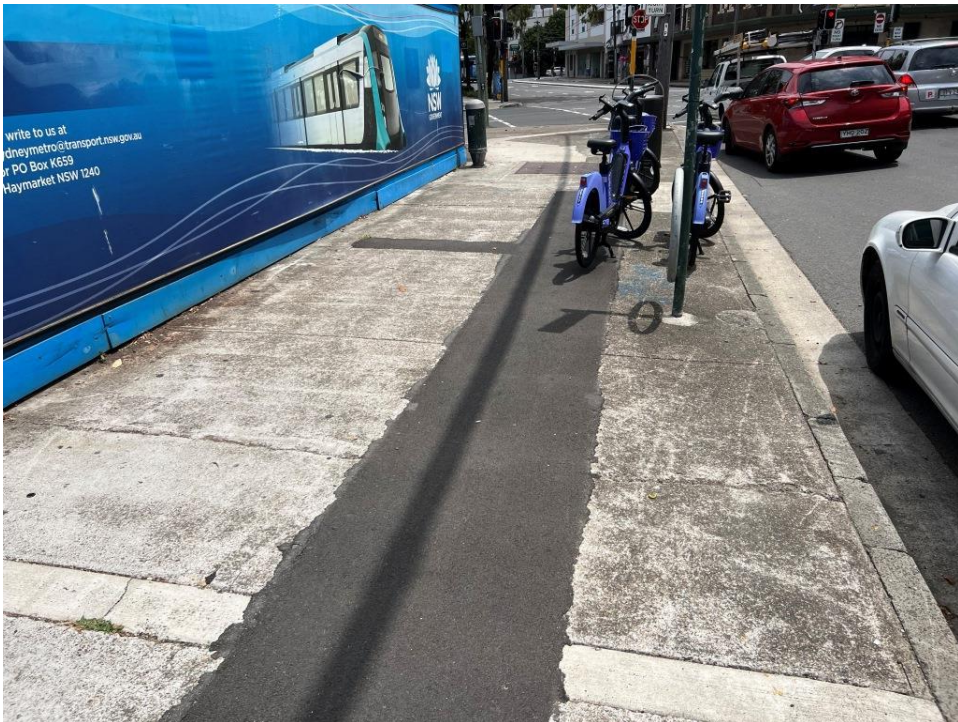


PHOTO 114

(Overview of footpath – Raglan Street)



PHOTO 115
(Overview of footpath – Raglan Street)



PHOTO 116
(Photo showing crack/missing concrete in footpath – Raglan Street)



PHOTO 117

(Photo showing crack/missing concrete in footpath – Raglan Street)



PHOTO 118

(Photo showing cracks in footpath – Raglan Street)



PHOTO 119

(Photo showing crack/missing concrete in footpath and kerb – Raglan Street)



PHOTO 120

(Photo showing crack/missing concrete in kerb – Raglan Street)



PHOTO 121

(Photo showing crack/missing concrete in kerb and gutter – Raglan Street)

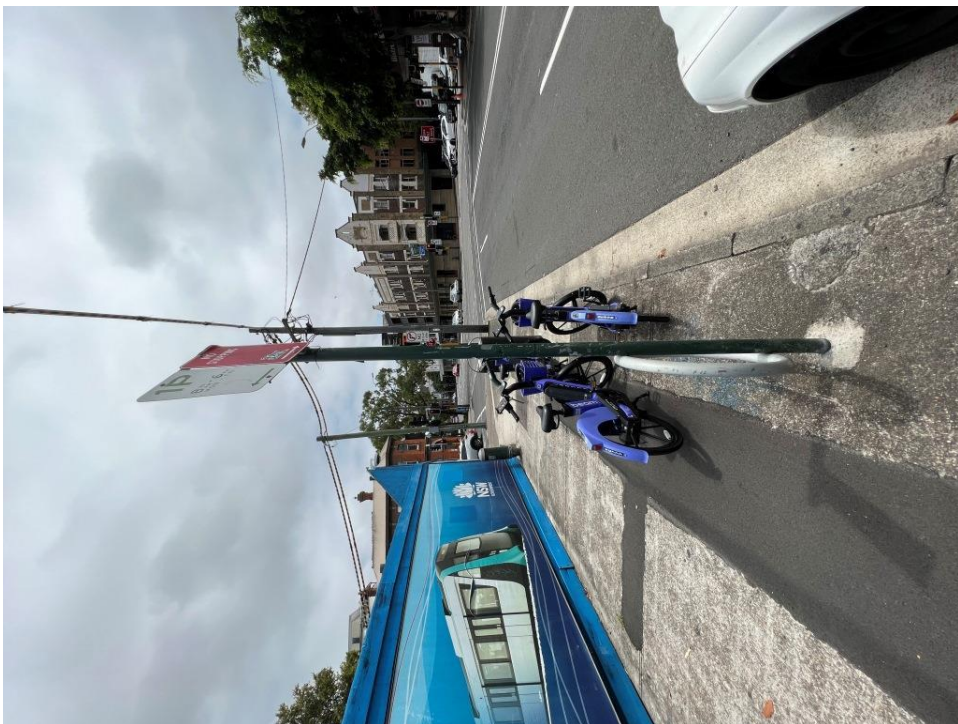


PHOTO 122

(Overview of footpath and parking sign post – Raglan Street)



PHOTO 123
(Overview of footpath – Raglan Street)



PHOTO 124
(Overview of footpath – Raglan Street)



PHOTO 125

(Photo showing condition of parking sign post – Raglan Street)



PHOTO 126

(Photo showing condition of footpath – Raglan Street)



PHOTO 127

(Photo showing crack/missing concrete in kerb – Raglan Street)



PHOTO 128

(Photo showing crack/missing concrete in kerb and gutter – Raglan Street)



PHOTO 129

(Photo showing condition of garbage bin – Raglan Street)



PHOTO 130

(Photo showing crack/missing concrete gutter – Raglan Street)



PHOTO 131

(Overview of footpath – Raglan Street and Botany Road intersection)



PHOTO 132

(Overview of kerb and gutter – Raglan Street and Botany Road intersection)



PHOTO 133

(Photo showing condition of garbage bin – Raglan Street)



PHOTO 134

(Overview of footpath – Raglan Street and Botany Road intersection)

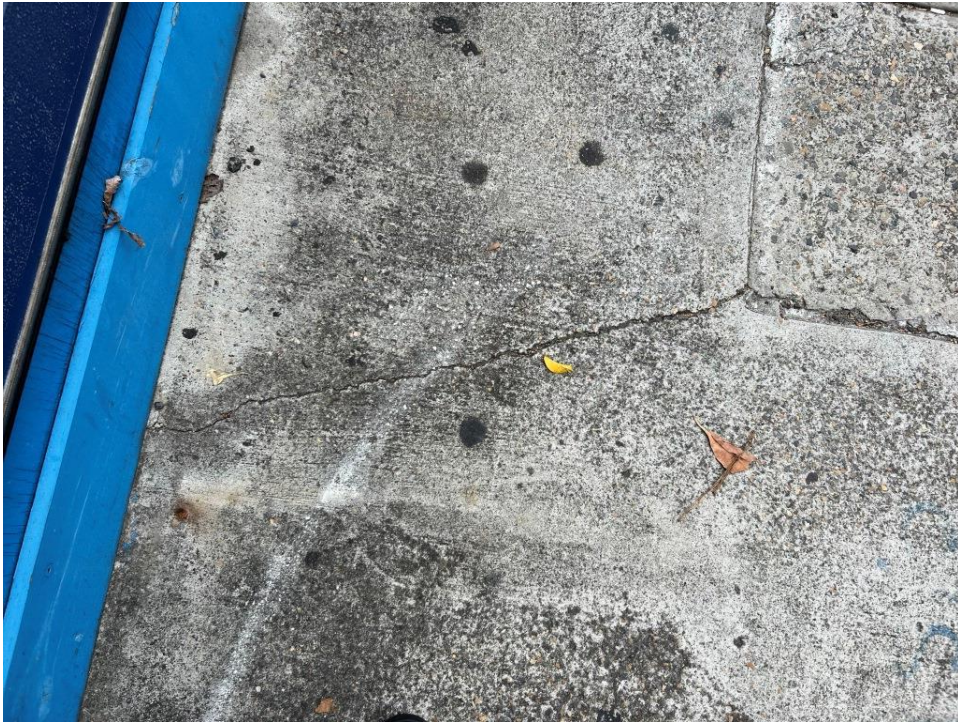


PHOTO 135

(Photo showing crack in footpath – Raglan Street and Botany Road intersection)

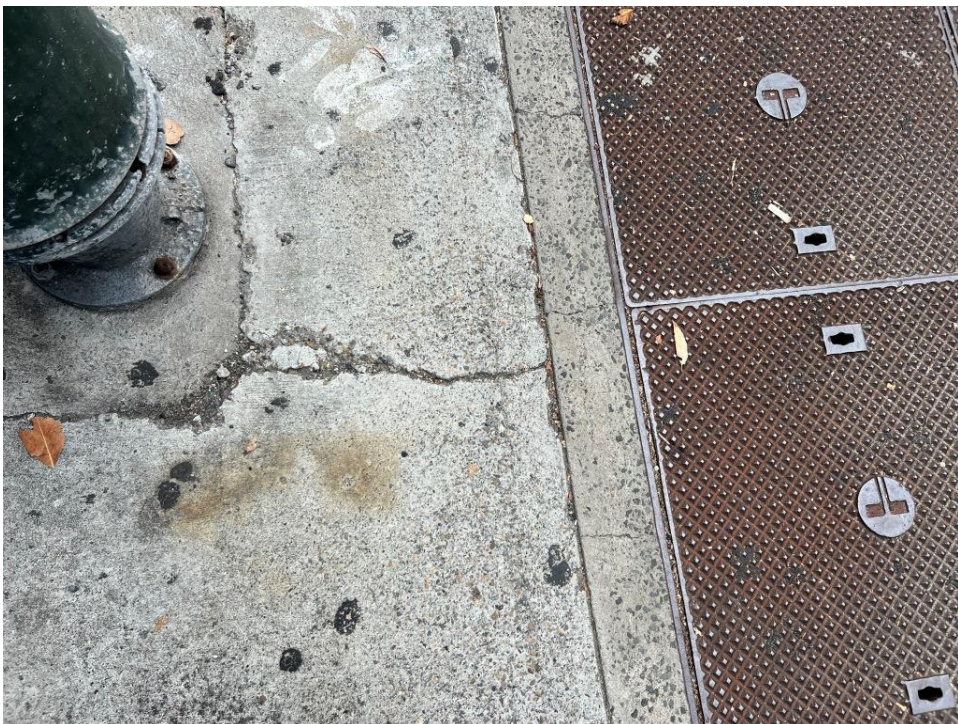


PHOTO 136

(Photo showing crack in footpath – Raglan Street and Botany Road intersection)



PHOTO 137

(Photo showing cracks in footpath – Raglan Street and Botany Road intersection)



PHOTO 138

(Photo showing cracks in footpath – Raglan Street and Botany Road intersection)



PHOTO 139

(Photo showing crack and missing concrete in footpath – Raglan Street and Botany Road intersection)



PHOTO 140

(Overview of footpath – Raglan Street and Botany Road intersection)

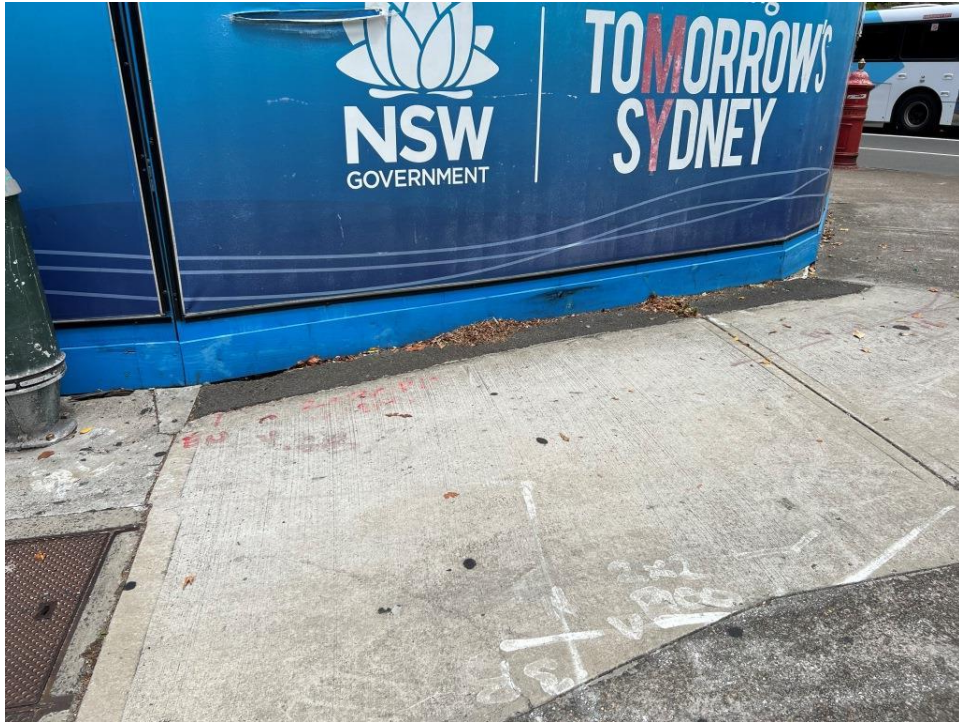


PHOTO 141

(Overview of footpath – Raglan Street and Botany Road intersection)



PHOTO 142

(Photo showing cracked and chipped concrete in kerb – Raglan Street and Botany Road intersection)



PHOTO 143

(Photo showing crack in gutter – Raglan Street and Botany Road intersection)



PHOTO 144

(Photo showing crack in footpath – Raglan Street and Botany Road intersection)



PHOTO 145

(Overview of footpath – Raglan Street and Botany Road intersection)



PHOTO 146

(Overview of footpath – Raglan Street and Botany Road intersection)

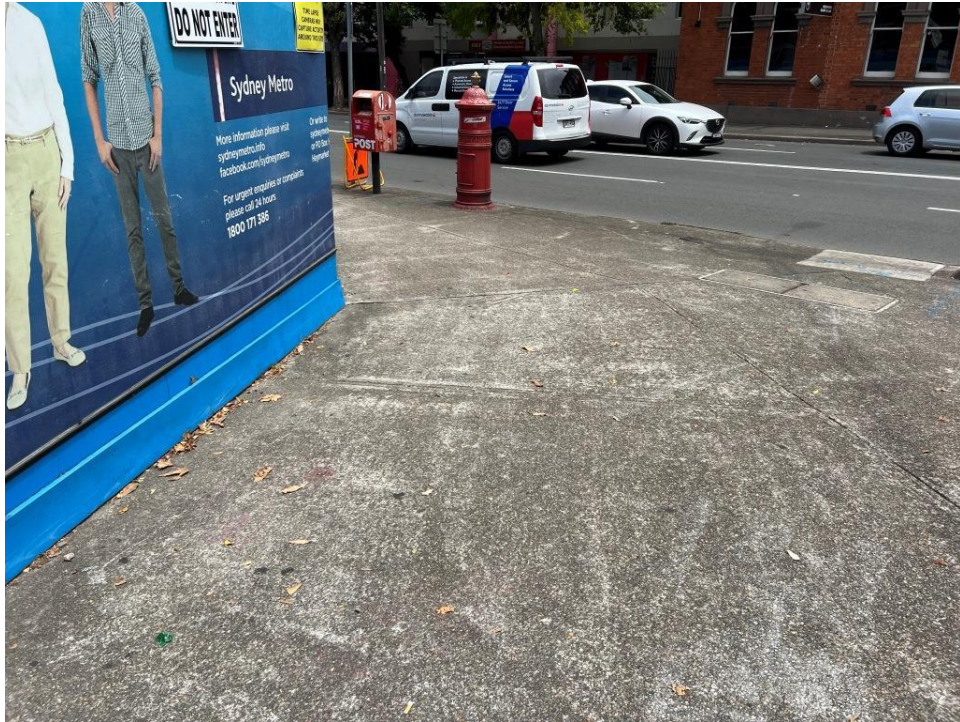


PHOTO 147

(Overview of footpath – Raglan Street and Botany Road intersection)



PHOTO 148

(Photo showing condition of electricity pole and street sign – Raglan Street and Botany Road intersection)



PHOTO 149

(Photo showing condition of electricity pole and street sign – Raglan Street and Botany Road intersection)

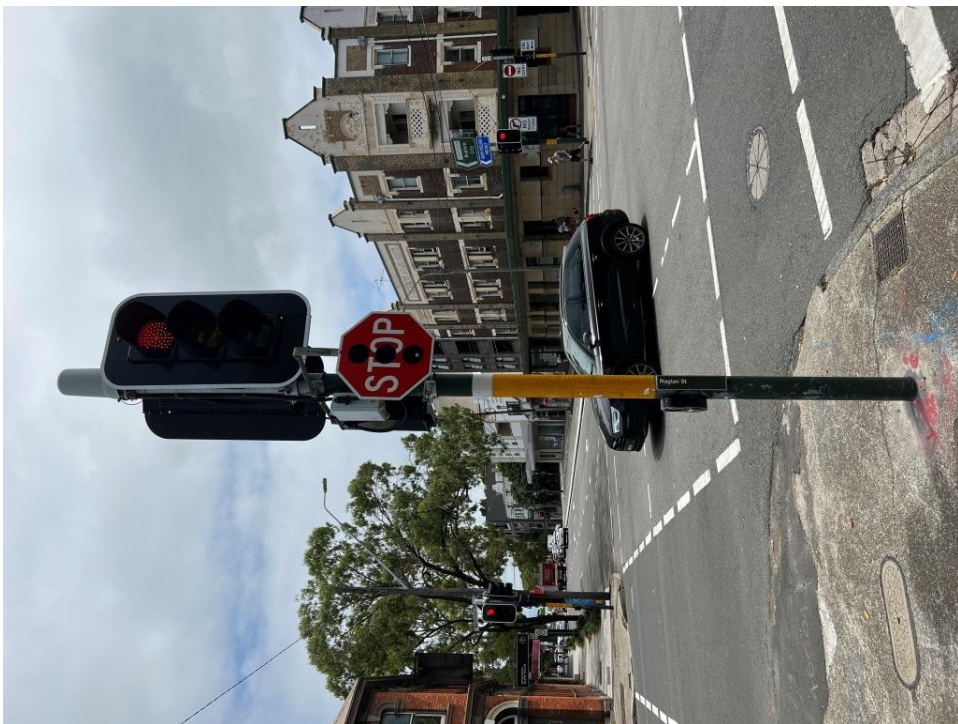


PHOTO 150

(Photo showing condition of traffic light – Raglan Street and Botany Road intersection)



PHOTO 151

(Photo showing crack in footpath – Raglan Street and Botany Road intersection)



PHOTO 152

(Photo showing cracks in footpath and gutter – Raglan Street and Botany Road intersection)



PHOTO 153

(Photo showing cracks in footpath and gutter – Raglan Street and Botany Road intersection)



PHOTO 154

(Photo showing cracks in footpath – Raglan Street and Botany Road intersection)



PHOTO 155

(Photo showing condition of electricity pole and traffic light – Raglan Street and Botany Road intersection)



PHOTO 156

(Photo showing condition of footpath at base of electricity pole – Raglan Street and Botany Road intersection)



PHOTO 157
(Overview of roadway – Botany Road)



PHOTO 158
(Photo showing cracked asphalt – Botany Road)



PHOTO 159
(Photo showing cracked asphalt – Botany Road)



PHOTO 160
(Photo showing cracked asphalt – Botany Road)



PHOTO 161

(Photo showing condition of footpath at base of electricity pole – Raglan Street and Botany Road intersection)



PHOTO 162

(Overview of footpath - Botany Road)



PHOTO 163

(Photo showing crack in footpath – Botany Road)



PHOTO 164

(Photo showing crack in footpath – Botany Road)



PHOTO 165
(Overview of footpath – Botany Road)



PHOTO 166
(Photo showing condition of mails drop off station – Botany Road)



PHOTO 167

(Photo showing crack in footpath – Botany Road)



PHOTO 168

(Photo showing crack in footpath – Botany Road)



PHOTO 169
(Overview of roadway – Botany Road)



PHOTO 170
(Photo showing condition of mails drop off station – Botany Road)



PHOTO 171

(Photo showing condition of mails drop off station – Botany Road)



PHOTO 172

(Overview of footpath – Botany Road)



PHOTO 173

(Photo included for location reference only)



PHOTO 174

(Photo showing condition of parking sign – Botany Road)



PHOTO 175

(Photo showing condition of parking sign – Botany Road)



PHOTO 176

(Overview of footpath – Botany Road)



PHOTO 177

(Photo showing chipped concrete along footpath's saw cut joint – Botany Road)



PHOTO 178

(Photo showing chipped concrete along footpath's saw cut joint – Botany Road)



PHOTO 179

(Photo showing chipped concrete along footpath's saw cut joint – Botany Road)



PHOTO 180

(Overview of footpath – Botany Road)



PHOTO 181
(Overview of footpath – Botany Road)

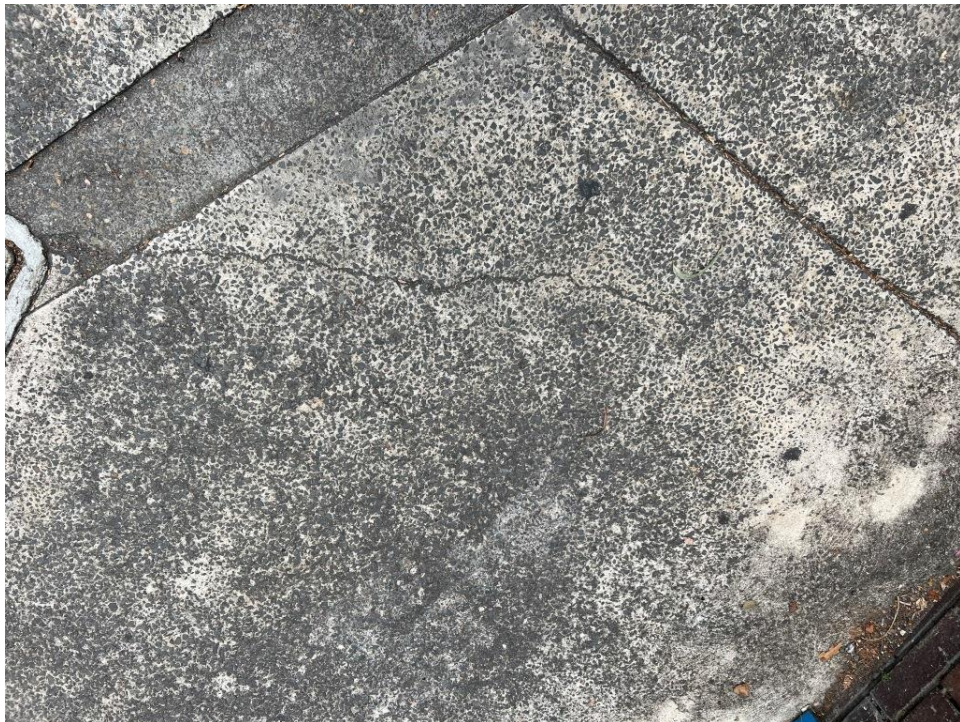


PHOTO 182
(Photo showing crack in footpath – Botany Road)



PHOTO 183
(Overview of footpath – Botany Road)



PHOTO 184
(Photo showing cracks/missing concrete in footpath and kerb – Botany Road)



PHOTO 185

(Overview of footpath and roadway – Botany Road)



PHOTO 186

(Photo included for location reference only)



PHOTO 187
(Overview of roadway – Botany Road)



PHOTO 188
(Overview of roadway – Botany Road)



PHOTO 189
(Overview of roadway – Botany Road)



PHOTO 190
(Photo showing cracks in asphalt – Botany Road)



PHOTO 191
(Overview of footpath – Botany Road)



PHOTO 192
(Photo showing cracks in asphalt – Botany Road)



PHOTO 193

(Photo showing chipped concrete along footpath's joint – Botany Road)



PHOTO 194

(Overview of footpath – Botany Road)



PHOTO 195
(Overview of roadway – Botany Road)



PHOTO 196
(Photo showing chipped concrete along footpath's joint – Botany Road)



PHOTO 197

(Overview of footpath and road sign – Botany Road)



PHOTO 198

(Photo showing cracks in footpath at base of road sign post – Botany Road)



PHOTO 199

(Photo showing missing concrete in kerb – Botany Road)



PHOTO 200

(Photo showing condition of footpath at former tree location – Botany Road)



PHOTO 201

(Photo showing crack in footpath – Botany Road)



PHOTO 202

(Photo showing crack in footpath – Botany Road)



PHOTO 203
(Overview of footpath – Botany Road)



PHOTO 204
(Overview of roadway – Botany Road)



PHOTO 205
(Overview of roadway – Botany Road)



PHOTO 206
(Overview of footpath and tree – Botany Road)



PHOTO 207
(Overview of former driveway – Botany Road)



PHOTO 208
(Overview of former driveway – Botany Road)



PHOTO 209

(Photo showing crack in kerb adjacent former driveway – Botany Road)



PHOTO 210

(Photo showing cracks in former driveway – Botany Road)



PHOTO 211

(Photo showing crack/missing concrete in former driveway – Botany Road)



PHOTO 212

(Photo showing crack/missing concrete in former driveway – Botany Road)



PHOTO 213

(Photo showing crack/missing concrete in former driveway – Botany Road)

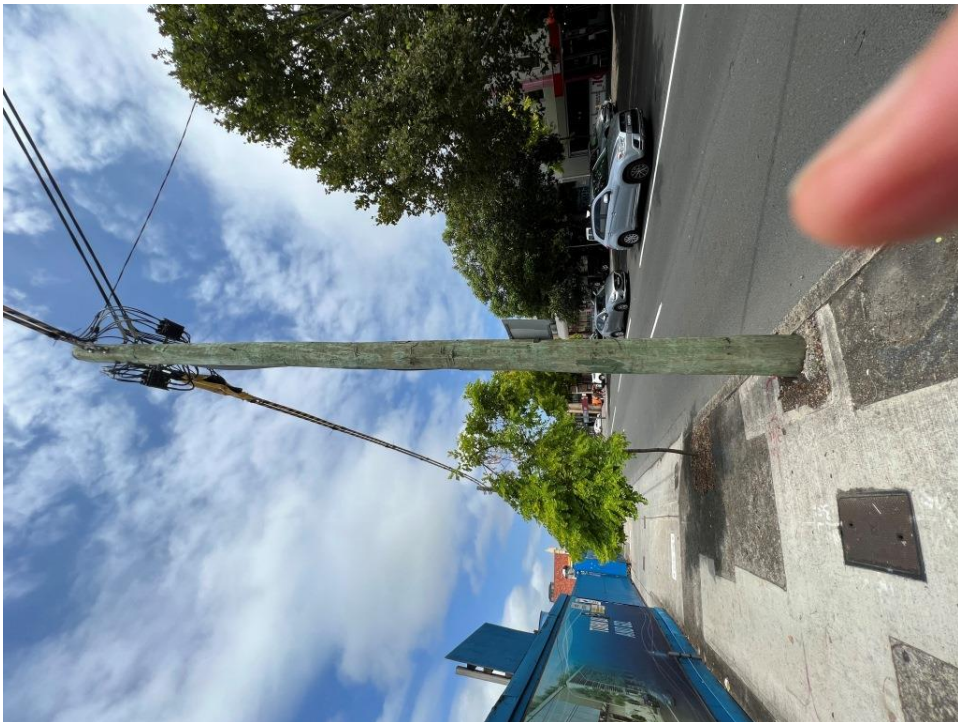


PHOTO 214

(Overview of footpath and electricity pole – Botany Road)



PHOTO 215

(Overview of footpath and electricity pole – Botany Road)



PHOTO 216

(Photo showing uneven footpath – Botany Road)



PHOTO 217

(Photo showing cracks in asphalt – Botany Road)

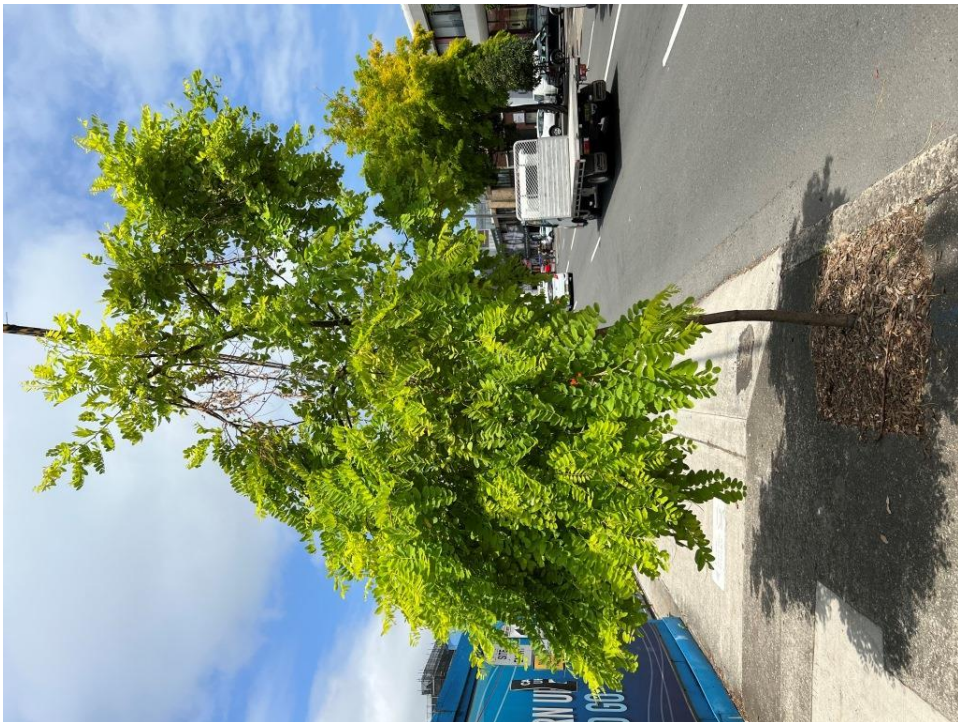


PHOTO 218

(Overview of footpath and tree – Botany Road)



PHOTO 219

(Photo showing condition of footpath adjacent to electricity pole – Botany Road)



PHOTO 220

(Photo showing crack in footpath – Botany Road)



PHOTO 221
(Photo showing crack in footpath – Botany Road)



PHOTO 222
(Overview of footpath and tree – Botany Road)



PHOTO 223
(Photo showing crack in footpath – Botany Road)



PHOTO 224
(Overview of truck driveway – Botany Road)



PHOTO 225
(Overview of truck driveway – Botany Road)



PHOTO 226
(Photo showing uneven surface in truck driveway – Botany Road)



PHOTO 227

(Photo included for location reference only)

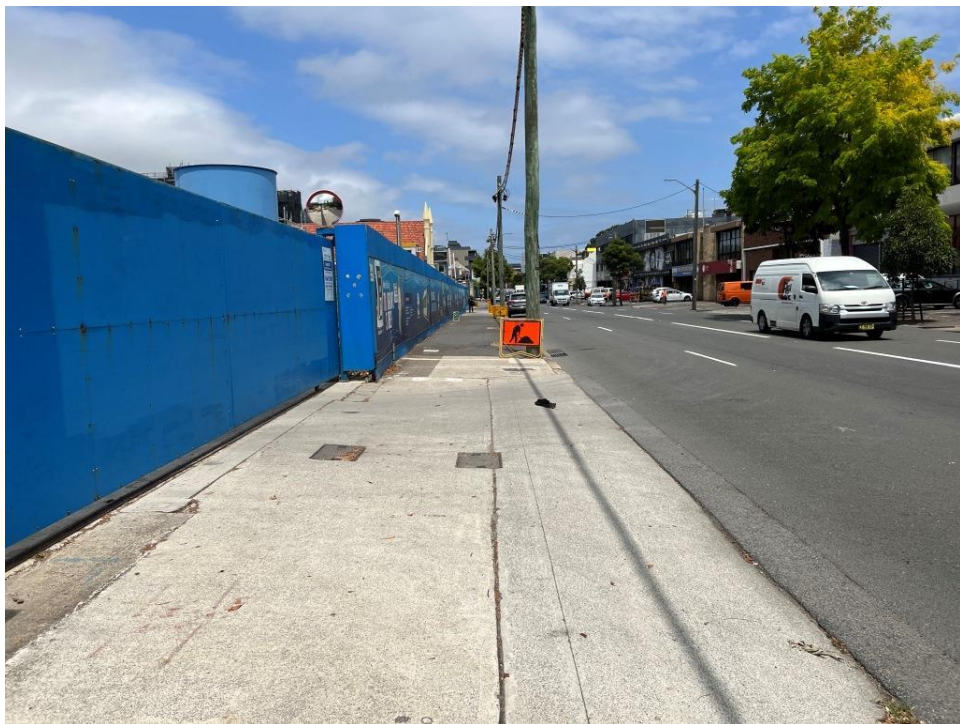


PHOTO 228

(Overview of truck driveway – Botany Road)



PHOTO 229

(Overview of roadway in front of truck driveway – Botany Road)



PHOTO 230

(Overview of roadway in front of truck driveway – Botany Road)



PHOTO 231

(Overview of roadway in front of truck driveway – Botany Road)



PHOTO 232

(Overview of roadway in front of truck driveway – Botany Road)



PHOTO 233

(Photo showing condition of truck driveway – Botany Road)



PHOTO 234

(Photo showing cracks and missing concrete in truck driveway – Botany Road)



PHOTO 235

(Photo showing cracks in truck driveway – Botany Road)



PHOTO 236

(Photo showing cracks in truck driveway – Botany Road)



PHOTO 237

(Photo showing cracks in truck driveway – Botany Road)



PHOTO 238

(Photo showing crack in truck driveway – Botany Road)



PHOTO 239

(Photo showing cracks in truck driveway – Botany Road)

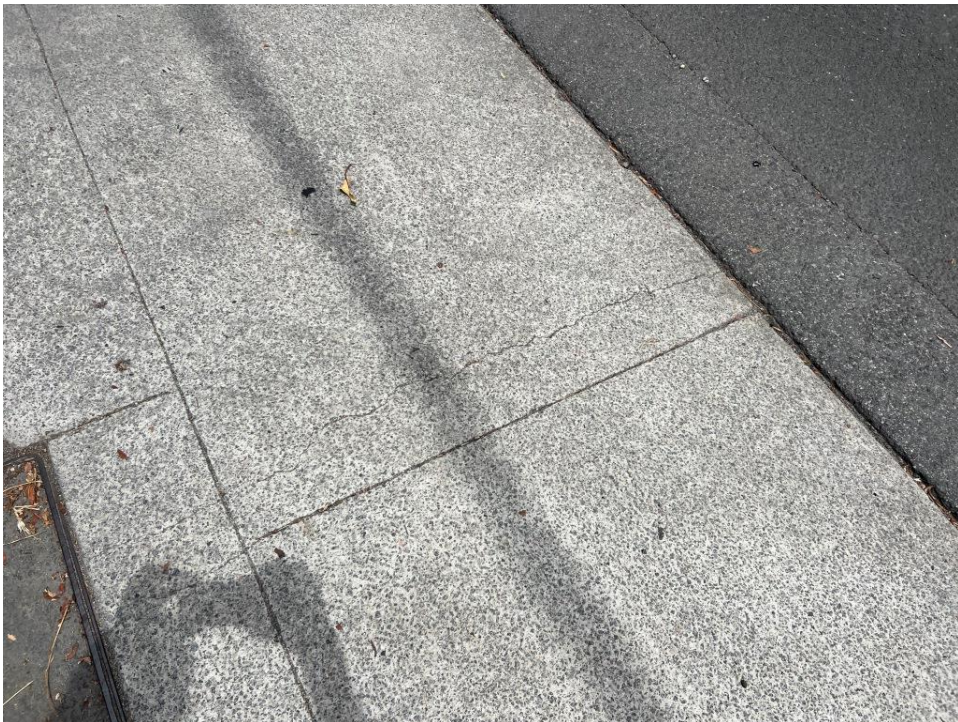


PHOTO 240

(Photo showing cracks in truck driveway – Botany Road)



PHOTO 241

(Photo showing cracks in truck driveway – Botany Road)



PHOTO 242

(Photo showing cracks in truck driveway – Botany Road)



PHOTO 243

(Photo showing cracks and missing concrete in truck driveway – Botany Road)



PHOTO 244

(Photo showing cracks and missing concrete in truck driveway – Botany Road)



PHOTO 245

(Photo showing cracks adjacent to truck driveway – Botany Road)

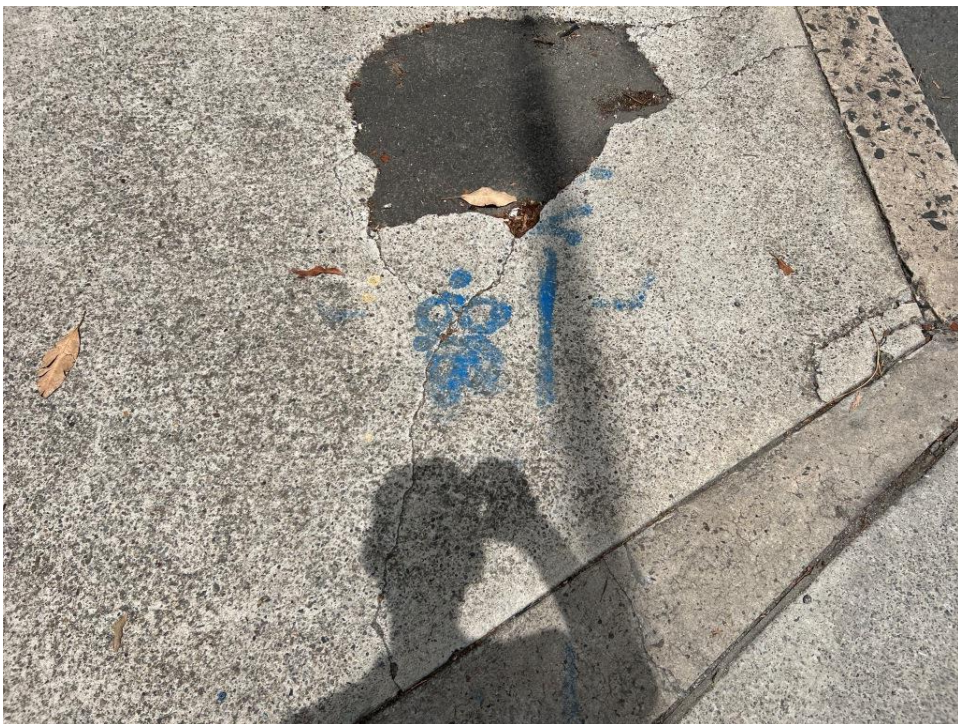


PHOTO 246

(Photo showing cracks adjacent to truck driveway – Botany Road)



PHOTO 247

(Photo showing cracks adjacent to truck driveway – Botany Road)



PHOTO 248

(Photo showing cracks adjacent to truck driveway – Botany Road)



PHOTO 249

(Overview of roadway adjacent to truck driveway – Botany Road)



PHOTO 250

(Overview of roadway adjacent to truck driveway – Botany Road)



PHOTO 251
(Overview of footpath – Botany Road)



PHOTO 252
(Photo showing crack in footpath – Botany Road)

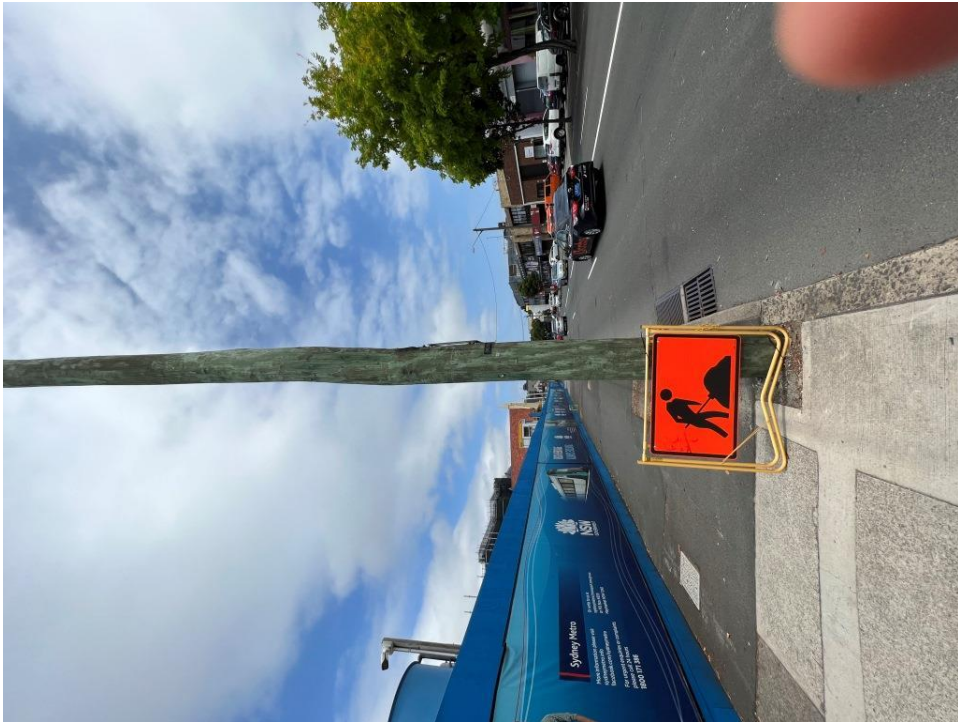


PHOTO 253

(Overview of footpath and electricity pole – Botany Road)



PHOTO 254

(Overview of footpath – Botany Road)



PHOTO 255

(Overview of footpath and roadway – Botany Road)



PHOTO 256

(Photo included for location reference only)



PHOTO 257

(Photo showing crack in kerb – Botany Road)



PHOTO 258

(Photo showing conditions of stormwater pits – Botany Road)



PHOTO 259

(Photo showing conditions of stormwater pits – Botany Road)



PHOTO 260

(Photo showing crack in footpath – Botany Road)



PHOTO 261

(Photo showing cracks in asphalt – Botany Road)



PHOTO 262

(Photo showing cracks in asphalt – Botany Road)



PHOTO 263

(Photo showing condition of tree former location – Botany Road)



PHOTO 264

(Overview of footpath and roadway – Botany Road)



PHOTO 265

(Photo showing crack in kerb – Botany Road)



PHOTO 266

(Photo showing crack in kerb – Botany Road)



PHOTO 267
(Photo showing cracks in kerb – Botany Road)



PHOTO 268
(Photo showing crack in footpath – Botany Road)



PHOTO 269
(Overview of roadway – Botany Road)



PHOTO 270
(Overview of roadway – Botany Road)



PHOTO 271
(Overview of roadway – Botany Road)



PHOTO 272
(Photo showing cracks in asphalt – Botany Road)



PHOTO 273
(Overview of footpath – Botany Road)



PHOTO 274
(Photo showing crack in footpath – Botany Road)



PHOTO 275

(Photo showing cracks in footpath – Botany Road)



PHOTO 276

(Photo showing crack in footpath – Botany Road)



PHOTO 277

(Photo showing cracks in footpath – Botany Road)



PHOTO 278

(Photo showing crack in footpath – Botany Road)



PHOTO 279
(Overview of footpath – Botany Road)



PHOTO 280
(Photo showing cracks in asphalt – Botany Road)



PHOTO 281
(Overview of footpath – Botany Road)



PHOTO 282
(Photo showing cracks and uneven footpath surface – Botany Road)



PHOTO 283

(Photo showing cracks in asphalt – Botany Road)



PHOTO 284

(Overview of footpath – Botany Road)



PHOTO 285

(Photo showing condition of electricity box – Botany Road)



PHOTO 286

(Photo showing crack in footpath – Botany Road)



PHOTO 287

(Photo showing condition of tree former location – Botany Road)



PHOTO 288

(Photo showing crack in footpath – Botany Road)



PHOTO 289
(Photo showing crack in asphalt – Botany Road)

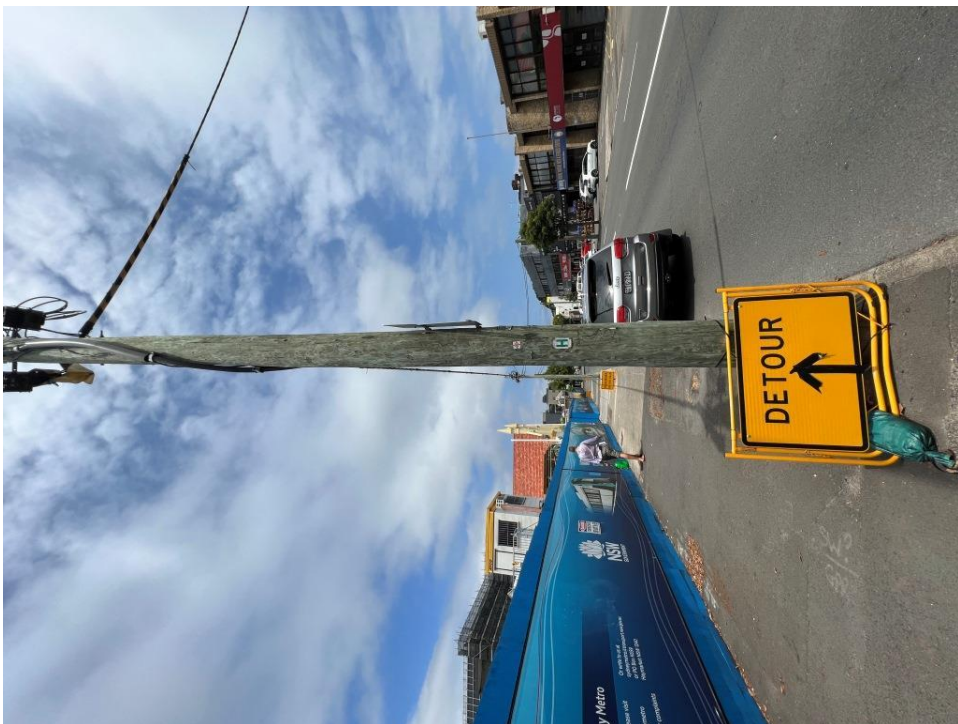


PHOTO 290
(Overview of footpath and electricity pole – Botany Road)



PHOTO 291
(Photo showing crack in footpath – Botany Road)

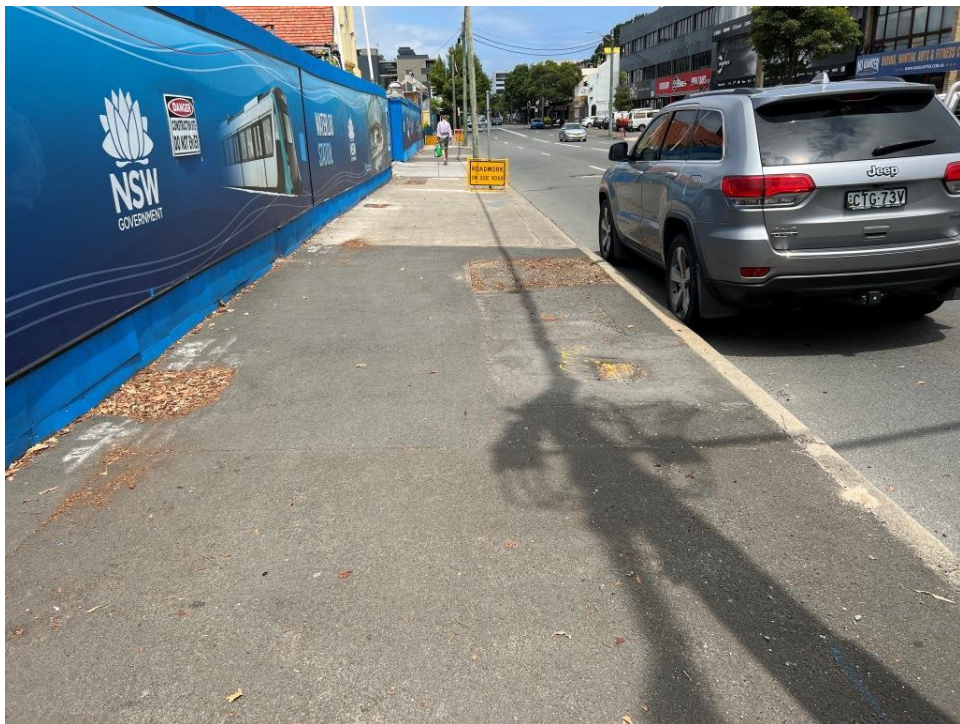


PHOTO 292
(Overview of footpath – Botany Road)



PHOTO 293

(Photo showing uneven footpath surface at base of electricity pole – Botany Road)



PHOTO 294

(Photo showing crack in asphalt – Botany Road)



PHOTO 295
(Overview of roadway – Botany Road)



PHOTO 296
(Overview of footpath – Botany Road)



PHOTO 297

(Photo showing uneven surface of footpath – Botany Road)



PHOTO 298

(Photo showing crack in footpath – Botany Road)



PHOTO 299
(Overview of former driveway – Botany Road)



PHOTO 300
(Photo included for location reference only)



PHOTO 301

(Photo showing condition of corner of former driveway – Botany Road)



PHOTO 302

(Overview of former driveway – Botany Road)



PHOTO 303

(Photo showing condition cracked asphalt edge at junction with former driveway – Botany Road)



PHOTO 304

(Overview of roadway in front of former driveway – Botany Road)



PHOTO 305

(Overview of roadway in front of former driveway – Botany Road)



PHOTO 306

(Photo showing condition of former driveway – Botany Road)



PHOTO 307

(Overview of former driveway and roadway – Botany Road)



PHOTO 308

(Photo showing condition of parking sign – Botany Road)



PHOTO 309

(Photo showing cracks in asphalt – Botany Road)



PHOTO 310

(Overview of footpath and truck driveway – Botany Road)



PHOTO 311

(Photo showing cracks in asphalt – Botany Road)



PHOTO 312

(Photo showing cracks in footpath adjacent truck driveway – Botany Road)



PHOTO 313

(Photo included for location reference only)



PHOTO 314

(Overview of truck driveway – Botany Road)



PHOTO 315

(Photo showing cracks in asphalt in front of truck driveway – Botany Road)



PHOTO 316

(Overview of roadway in front of truck driveway – Botany Road)



PHOTO 317

(Photo showing damaged/cracked concrete in truck driveway – Botany Road)



PHOTO 318

(Photo showing cracks in asphalt in front of truck driveway – Botany Road)



PHOTO 319

(Photo showing cracks in asphalt in front of truck driveway – Botany Road)



PHOTO 320

(Overview of footpath and truck driveway – Botany Road)



PHOTO 321

(Overview of footpath and electricity pole – Botany Road)



PHOTO 322

(Photo showing uneven footpath surface at base electricity pole – Botany Road)



PHOTO 323

(Overview of footpath and former driveway – Botany Road)



PHOTO 324

(Photo included for location reference only)



PHOTO 325

(Photo showing cracked kerb at former driveway corner – Botany Road)



PHOTO 326

(Overview of footpath and former driveway – Botany Road)



PHOTO 327

(Overview of roadway in front of former driveway – Botany Road)



PHOTO 328

(Photo showing crack/missing concrete in kerb at former driveway corner – Botany Road)



PHOTO 329
(Overview of footpath – Botany Road)



PHOTO 330
(Photo included for location reference only)



PHOTO 331
(Overview of roadway – Botany Road)



PHOTO 332
(Overview of roadway – Botany Road)



PHOTO 333

(Photo showing chipped/missing concrete in kerb – Botany Road)



PHOTO 334

(Photo showing cracks in asphalt – Botany Road)



PHOTO 335

(Photo showing cracks in asphalt – Botany Road)



PHOTO 336

(Overview of uneven footpath surface – Botany Road)



PHOTO 337

(Photo showing cracks in footpath – Botany Road)



PHOTO 338

(Photo showing cracks in footpath – Botany Road)



PHOTO 339

(Photo showing cracks in footpath – Botany Road)

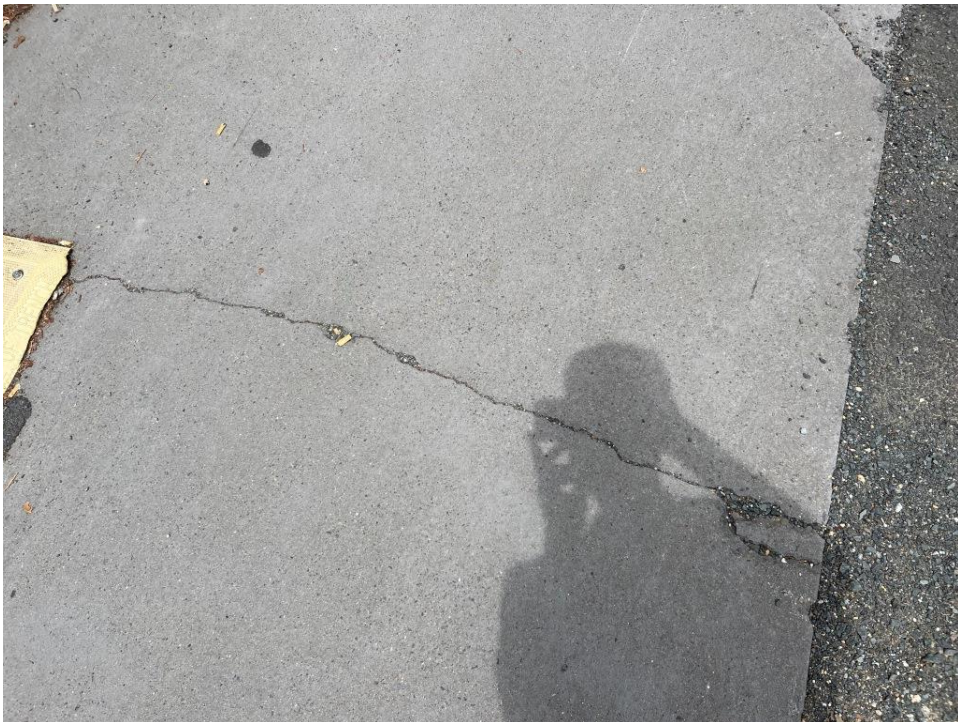


PHOTO 340

(Photo showing cracks in footpath – Botany Road)



PHOTO 341

(Photo showing cracks in footpath – Botany Road)



PHOTO 342

(Photo showing cracks in footpath – Botany Road)



PHOTO 343

(Photo showing cracks in footpath – Botany Road)



PHOTO 344

(Photo showing chipped/missing concrete in kerb – Botany Road)



PHOTO 345

(Photo showing chipped/missing concrete in kerb – Botany Road)



PHOTO 346

(Overview of roadway – Botany Road)



PHOTO 347
(Overview of roadway – Botany Road)



PHOTO 348
(Photo showing cracked/damaged kerb – Botany Road)