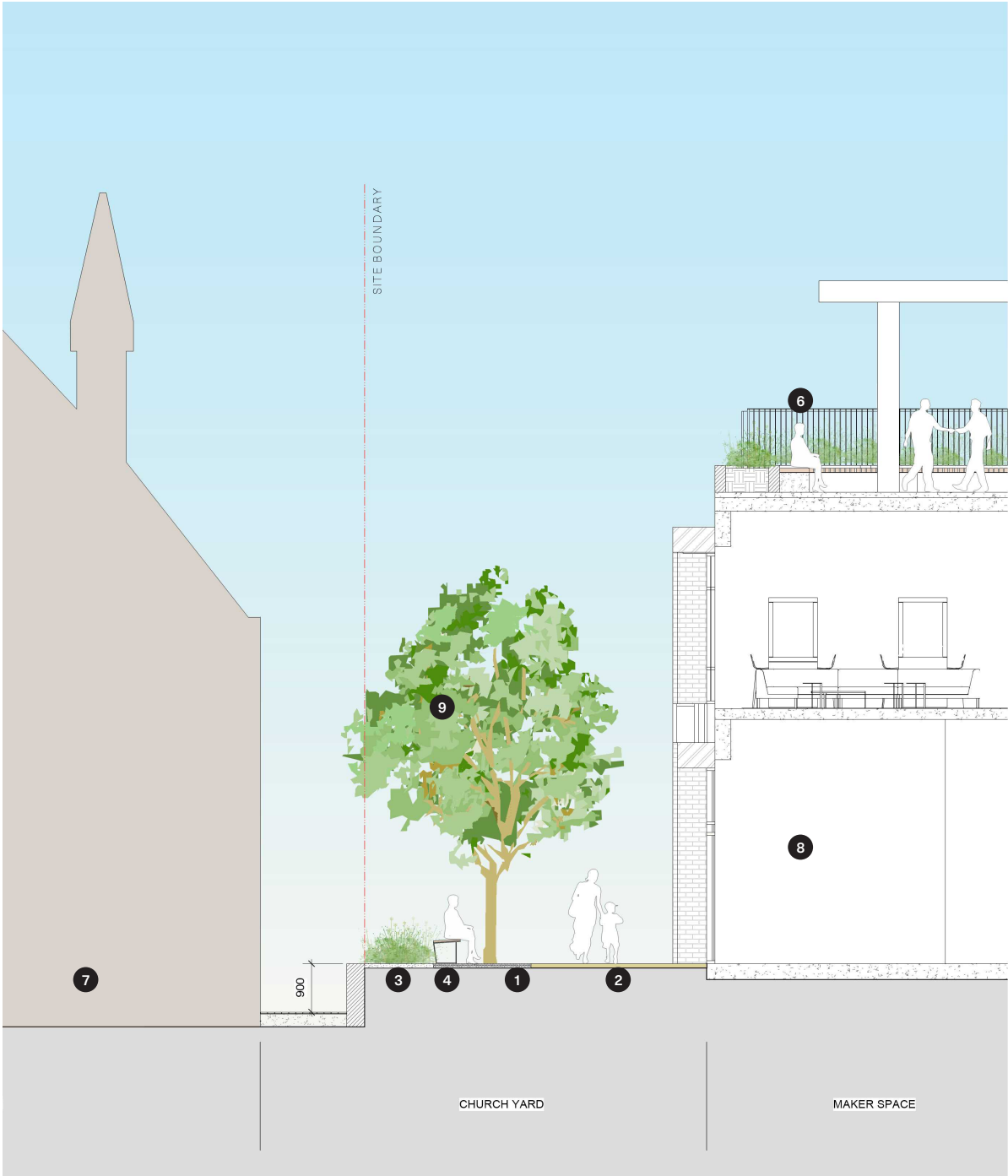


Location Plan |



KEY	
1	Permeable paving
2	Brick Paving to clear access path
3	New buffer planting
4	New bench seating
5	Church boundary wall
6	Level 3 Communal Roof Terrace
7	Waterloo Congregational Church
8	Community Use Building
9	Proposed Trees
- - - - -	Site Boundary

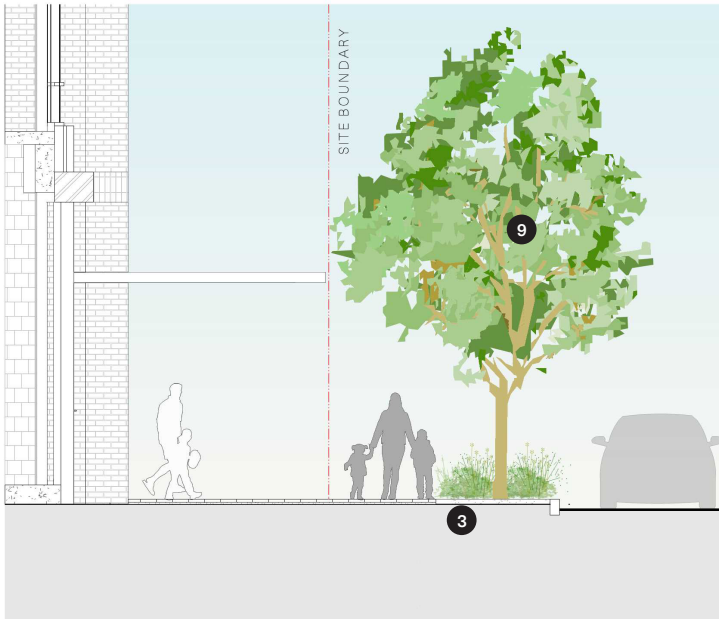
Section A |



Section B |



Section C |



General Arrangement : Cope Street Plaza

Introduction

Cope Street Plaza will provide a meeting place/ neighborhood square/communal gathering area that showcases Aboriginal artworks and stories. Located at footpath level, the square is subtly separated from the surrounding circulation zones and outdoor dining areas, creating a protected place for community use.

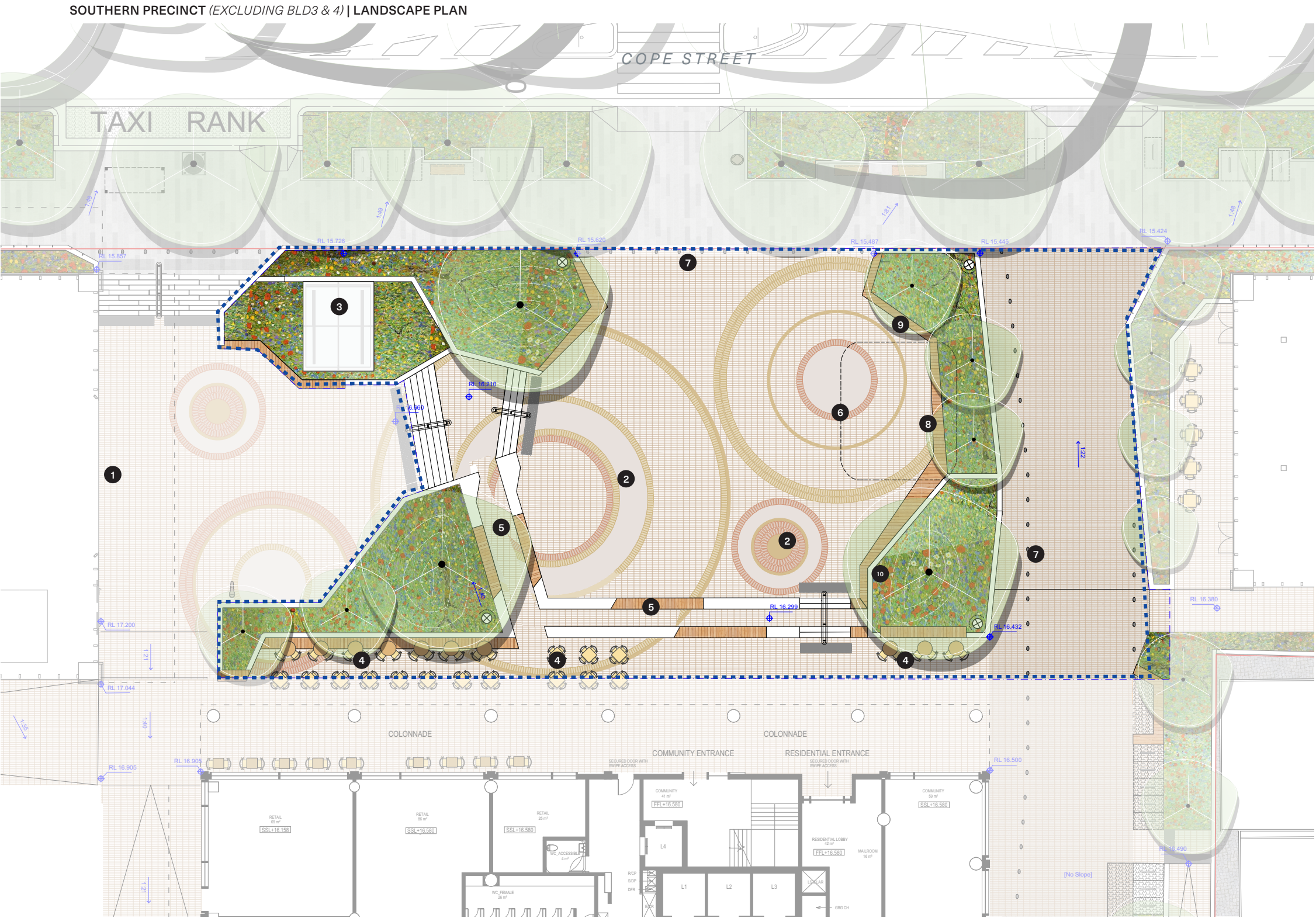
Distinctive planting will allow an understanding of the six indigenous seasons to be highlighted through the native planting selection.

Active building uses are edges to the square, making this an attractive space to be during day and evening. A small pavilion will provide a permanent place for trade/busking/gathering linked to the original trade route walking trail now known as Botany Rd. Circulation routes are clearly defined and slightly separate from places to dwell. The upper area of the plaza becomes a meeting place and opportunity to sit at the higher level adjacent the station separate from the main circulation routes.

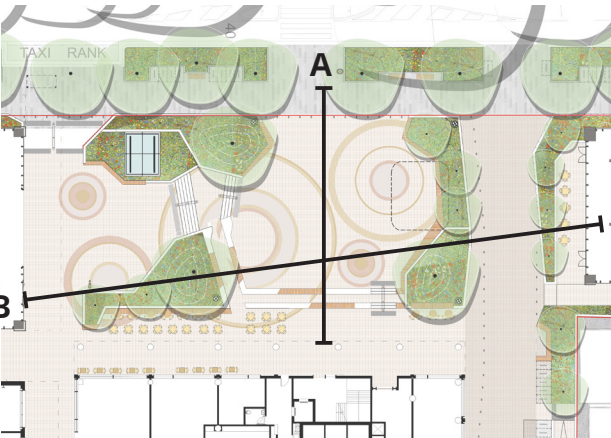
The lower plaza is contained on three sides by seating terraces which create a sheltered place for sitting or enjoying small scaled events.

KEY MAP

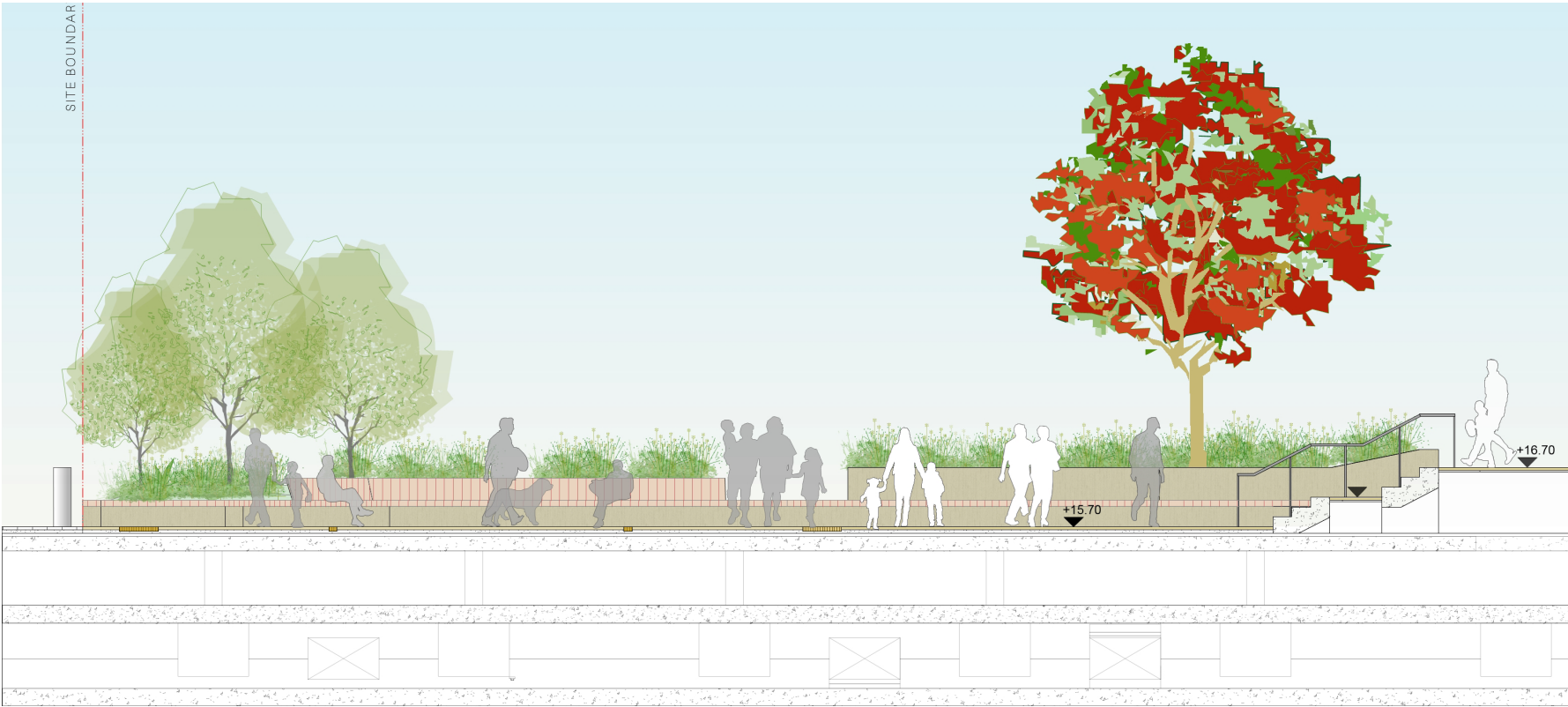
KEY	
1	Southern Metro Station entrance/exit
2	Future Indigenous paving artwork
3	Integrated skylight
4	Potential Licensed Seating Area
5	Terraced seating
6	Potential shade structure/canopy
7	Hostile vehicle protection bollards
8	Seating with backrest and storage cupboard
9	Power Outlet
10	Potable Water Connection
..... Southern Precinct Extent of Scope	
—— WMQ Site Boundary	



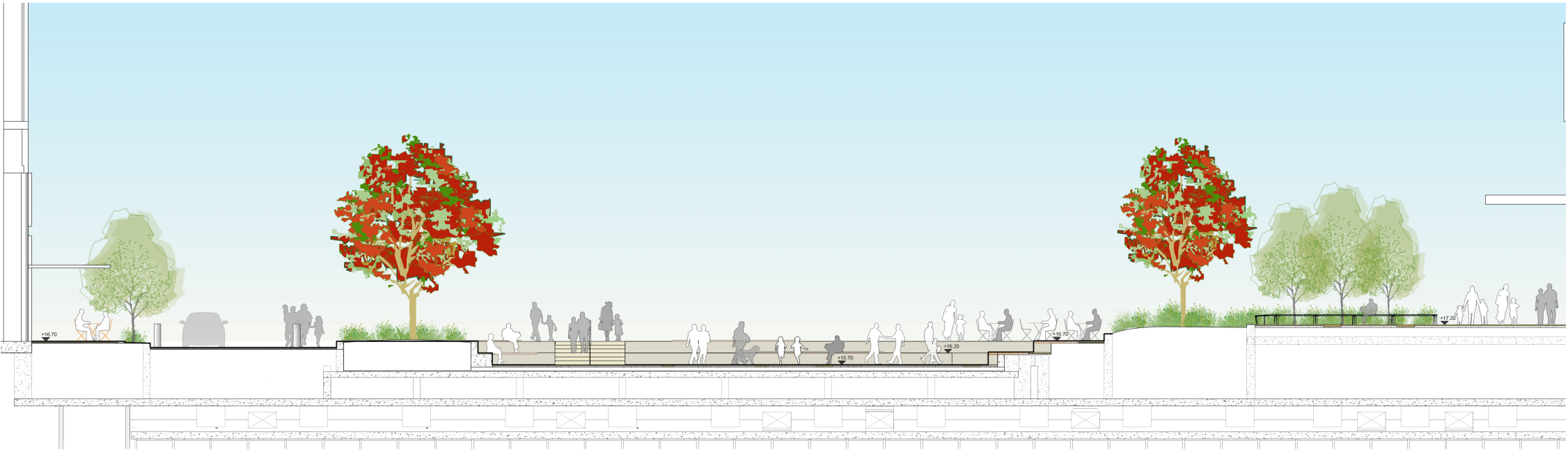
Location Plan |



Section A |



Section B |




Public Domain Material Strategy


Introduction


The materials throughout draw inspiration from the character of the surrounding neighbourhoods of Redfern and Waterloo. Drawing on the robustness and timelessness of concrete and brick, the landscape spaces utilise these materials with a preference for warm tones and variation in formats to create a fine-grained response to ground plane materials.


For public domain areas that fall outside the Waterloo Metro Quarter site boundary, the City of Sydney 'Village Centre Activity Strip' approved palette of materials will be used. This includes concrete unit paver's in charcoal colour. Refer to material palette on following page


KEY


 Brick Paving
(Pedestrian grade)


 Plaza Feature Paving (to be developed by Artist)

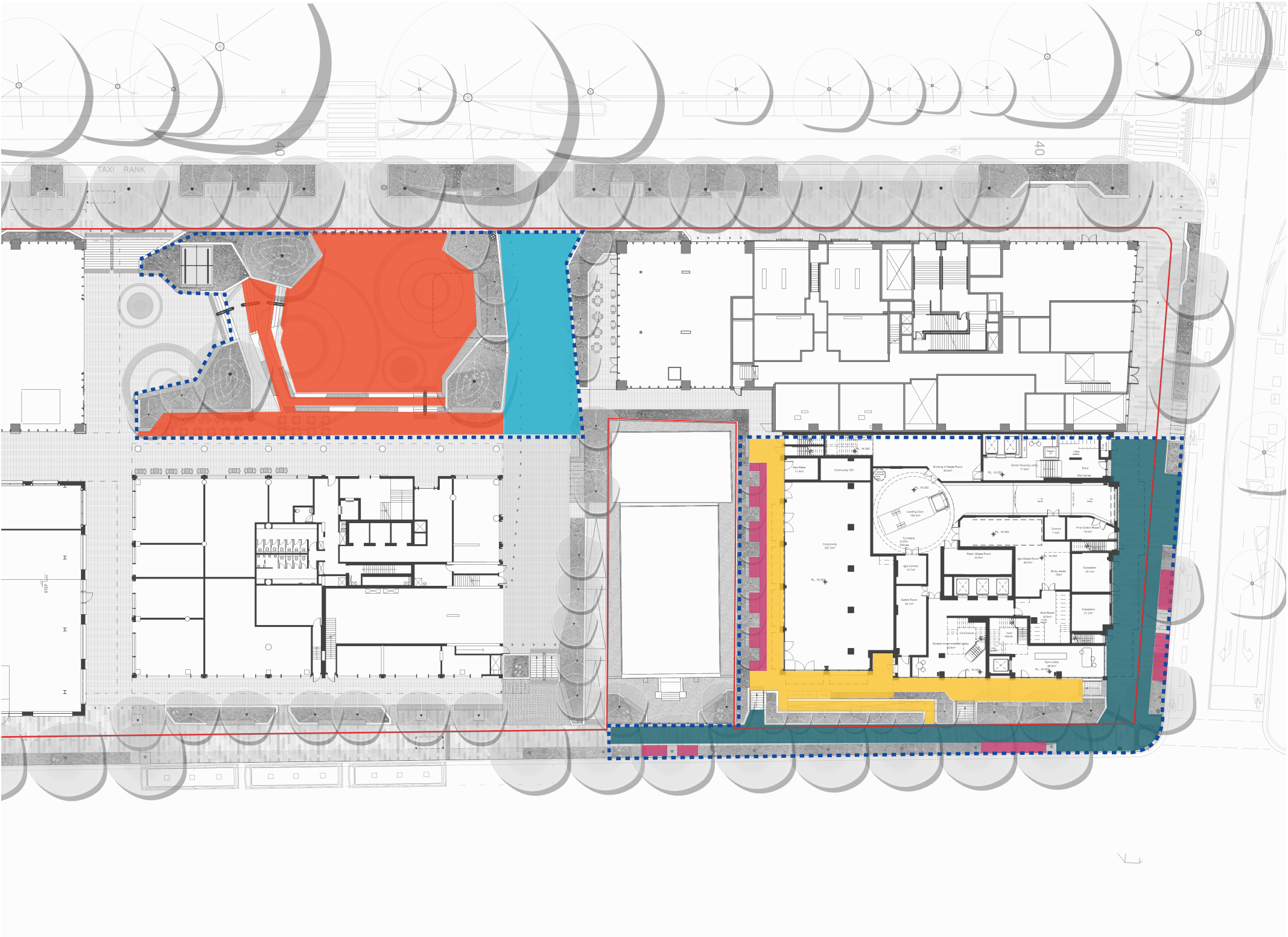
 Permeable Paving

 Interlocking Paving - Shareway
(vehicular grade)

 City of Sydney Concrete Paving

 Southern Precinct Boundary

 WMQ Site Boundary



Public Domain Material Palette

Paving and Surface Finishes



Warm Brick Paving Pedestrian Grade



Feature Brick Paving



Interlocking concrete unit paver (vehicular grade)



Eco Tri Hex Permeable Paver



CoS Concrete Unit Paver

Furniture



Concrete terraces



Seating including backrests and handrails



Seating including backrests and handrails



City of Sydney Tree Surround



City of Sydney Bike Rack



Stainless steel rated bollard

Planting Strategy: Southern Precinct

Introduction

Planting typologies within the precinct vary between the different landscape spaces. It is intended that most planting at ground level of the project, including the planting along Botany Road and Wellington Street, is comprised of native plant species selected for edible/usable properties.

Tree and understorey planting throughout the site will provide a rich diversity of endemic species. The palette has been developed to create urban ecologies which will provide habitat or food sources for native birds, bees and insects.

This planting would be maintained by an indigenous owned landscape maintenance firm who will run educational tours as well as maintain the planting.

Appropriate soil volumes will be provided for proposed trees over structure in accordance with the SESL / CSIRO soil volume calculation tool.

Refer to planting palette on the following pages for more information.

KEY

Plant Mix 1

Plant Mix 2

Plant Mix 3

Alloxylon pinnatum

Waterhousia floribunda

Harpullia pendula

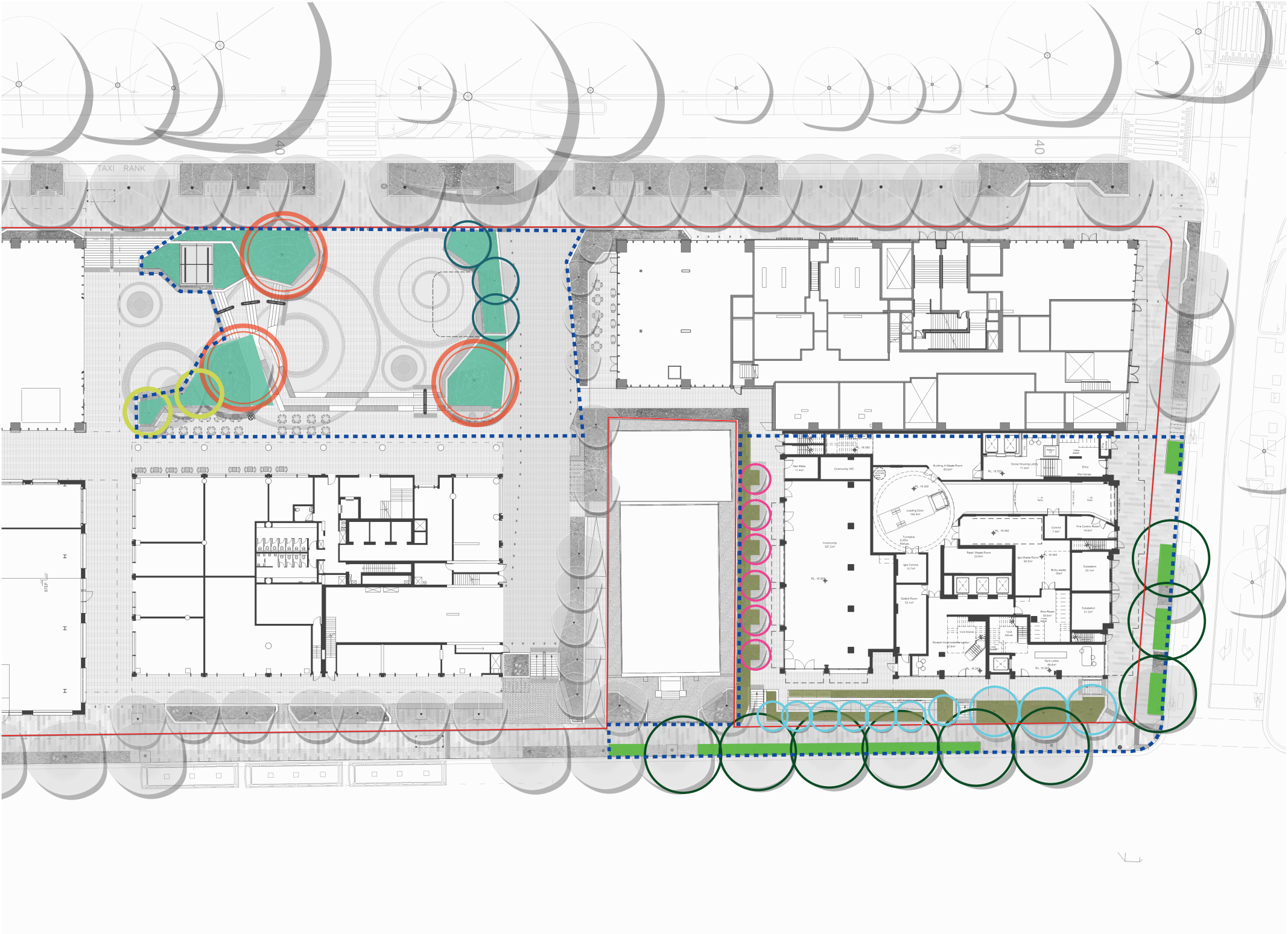
Lophostemon confertus

Robinia pseudoacacia

Lagerstroemia indica

Southern Precinct Boundary

WMQ Site Boundary



Planting Strategy: Southern Precinct

Trees			
Botanical Name	Common Name	Pot Size	Origin
Lophostemon confertus	Brush Box	400Ltr	Native
Harpullia pendula	Tulipwood	400Ltr	Native
Robinia pseudoacacia	Black Locust	400Ltr	Native
Lagerstroemia indica	Crepe Myrtle	400Ltr	Native

Plant Mix 1 - Public Domain Understorey			
Botanical Name	Common Name	Pot Size	Origin
Billardia scandens	Apple Berry	200mm	Native
Atriplex nummularia	Saltbush	400mm	Native
Lomandra longifolia	Basket Grass	200mm	Native
Westringia fruticosa 'Zena'	Dwarf Coastal Rosemary	200mm	Native
Anigozanthos manglesii	Kangaroo Paw	140mm	Native
Themada australis	Tussock Grass	140mm	Native
Carpobrotus glaucescens	Pigface	140mm	Native
Dichelachne crinita	Plume Grass	200mm	Native
Dianella revoluta	Blueberry Lily	140mm	Native
Actinotus helianthi	Flannel Flower	140mm	Native

Plant Mix 2 - Raised Planter Understorey			
Botanical Name	Common Name	Pot Size	Origin
Dichelachne crinita	Plume Grass	200mm	Native
Dianella revoluta	Blueberry Lily	140mm	Native
Atriplex nummularia	Saltbush	400mm	Native
Lomandra longifolia	Basket Grass	200mm	Native
Westringia fruticosa 'Zena'	Coastal Rosemary	200mm	Native
Actinotus helianthi	Flannel Flower	140mm	Native
Pteridium esculentum	Bracken Fern	200mm	Native
Dianella caerulea	Blueberry Lily	200mm	Native



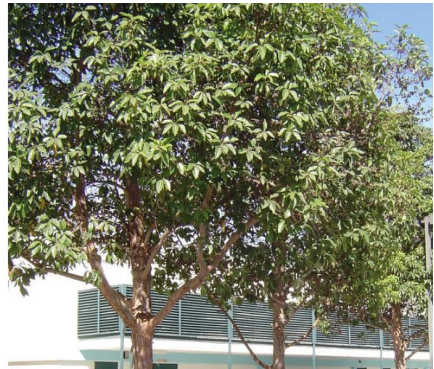
Harpullia pendula



Robinia pseudoacacia



Lagerstroemia indica



Lophostemon confertus



Lomandra longifolia



Themada australis



Atriplex nummularia



Billardia scandens



Westringia fruticosa



Anigozanthos manglesii



Carpobrotus glaucescens



Dianella caerulea



Actinotus helianthi



Dianella revoluta



Dichelachne crinita



Pteridium esculentum

Planting Strategy: Cope Street Plaza

Trees			
Botanical Name	Common Name	Pot Size	Origin
Harpullia pendula	Tulipwood	400Ltr	Native
Alloxylon pinnatum	Dorigo Waratah	400Ltr	Native
Waterhousia floribunda	Weeping Lily Pily	400Ltr	Native

Plant Mix 3 - Raised Planter Understorey (Cope Street Plaza)			
Botanical Name	Common Name	Pot Size	Origin
Lomandra longifolia	Basket Grass	200mm	Native
Lomandra tanika	Mat Rush	140mm	Native
Dichelachne crinita	Plume Grass	200mm	Native
Dianella carulea	Blueberry Lily	200mm	Native
Acacia suaveolens	Sweet Wattle	200mm	Native
Austromyrtus dulcis	Midgenberry	140mm	Native
Baeckea imbricata	Heath Myrtle	200mm	Native
Billardiera scandens	Apple Berry	200mm	Native
Cissus antarctica	Kangaroo Vine	200mm	Native
Doodia aspera	Prickly Rasp Fern	140mm	Native
Epacris longiflora	Fuscia Heath	200mm	Native
Ficinia nodosa	Knobbly Club Rush	200mm	Native



Harpullia pendula



Alloxylon pinnatum



Waterhousia floribunda



Lomandra longifolia



Acacia suaveolens



Lomandra tanika



Billardia scandens



Austromyrtus dulcis



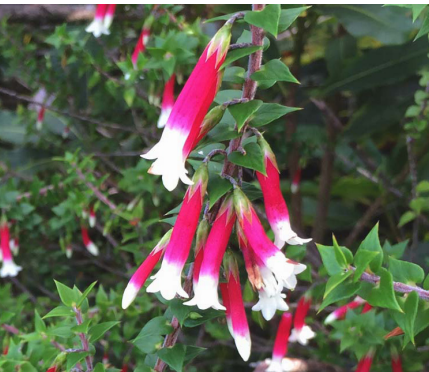
Baeckea imbricata



Doodia aspera



Dianella caerulea



Epacris longiflora



Ficinia nodosa



Dichelachne crinita



Cissus antarctica

PAGE INTENTIONALLY BLANK

Section 4

Communal Terraces & Green Roof



Introduction

Introduction

Green roofs are proposed on all new buildings in the precinct. These include communal terraces, inaccessible green roofs and private roof terraces.

All roof terraces will be designed with regards to a site wide set of design principles outlined below, then applied to the needs of each building.



PROVIDE SPACES THAT ALLOW FOR OUTDOOR DINING, OUTDOOR WORKING AND SMALL COMMUNAL GATHERINGS.



MAXIMISE LOW WATER USE NATIVE PLANT SPECIES - AT LEAST 70%




CHOOSE PLANT SPECIES THAT PROVIDE A CONTRIBUTION TO BIODIVERSITY.



CREATE AREAS FOR RESIDENTS OR TENANTS TO GROW EDIBLE PLANT SPECIES.

Building 3: Level 02


Building 3 includes a communal roof terrace for students with a variety of spaces to gather and work outside. The terrace is adjacent to the communal lounge and has a range of seating/studying opportunities with timber benches and concrete tables. A raised planter wraps around the edge of the terrace and is integrated into the protective balustrade.



LOCATION: SOUTHERN PRECINCT

BUILDING 3

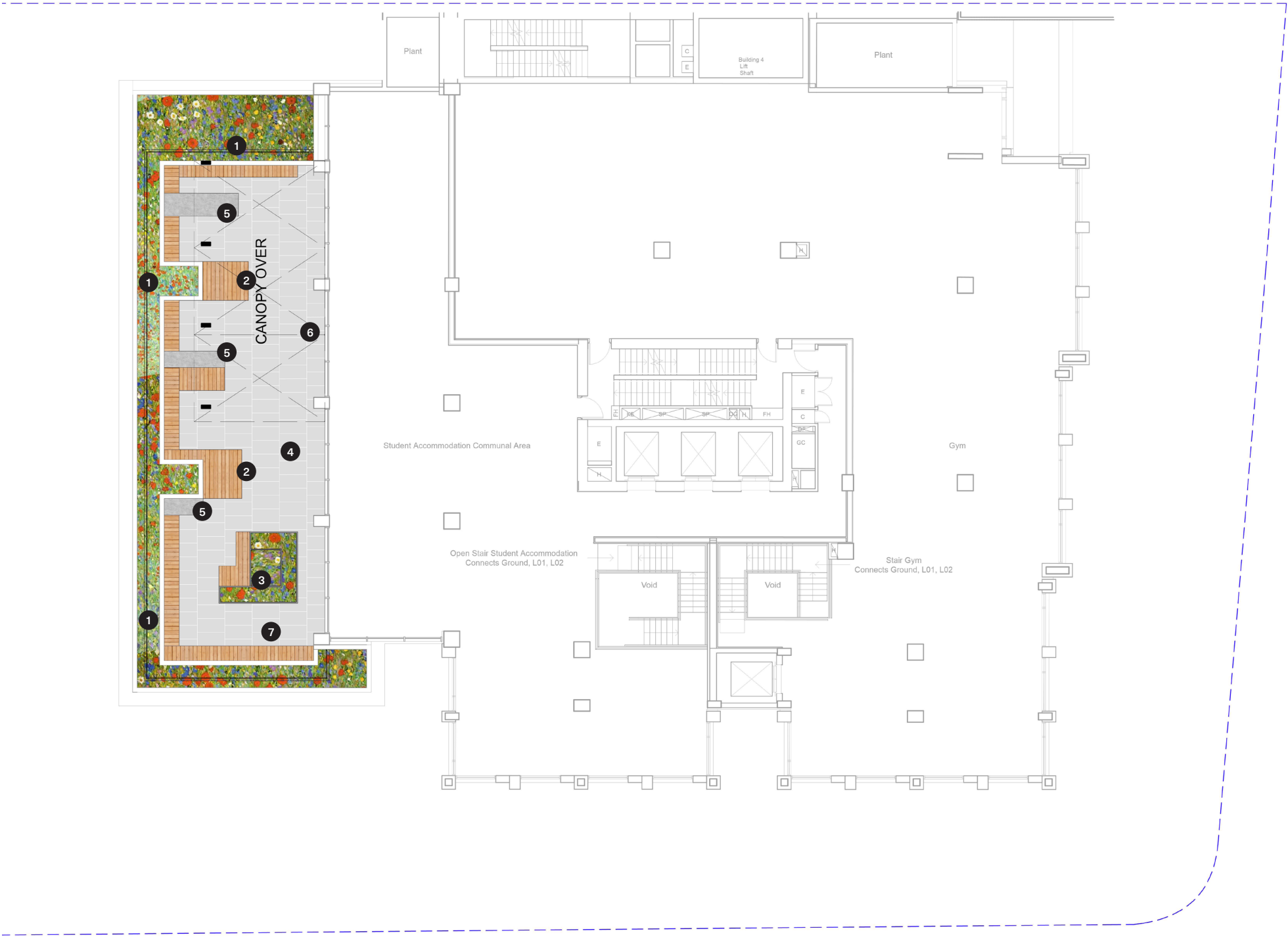
KEY MAP



KEY

1	Perimeter planter with integrated balustrade
2	Informal timber seating decks
3	Kitchen Garden with small fruit tree
4	Paving on Pedestals
5	Tables
6	Canopy (to Architects design)

Level 2 | Communal Terrace




Building 3: Level 03

To provide a greener outlook from adjoining windows a low maintenance, inaccessible green roof is proposed for Level 3.

This habitat area will be a mix of low groundcovers and grasses that can thrive in challenging urban conditions and with minimal soil volume.

Level 3 | Inaccessible Green Roof






LOCATION: SOUTHERN PRECINCT

BUILDING 3

KEY MAP

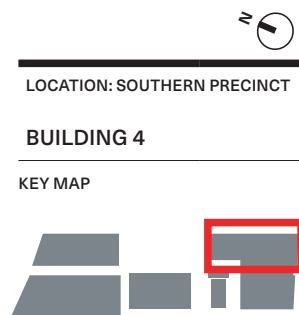


KEY

1

Inaccessible Green Roof

Level 1 | Inaccessible Green Roof



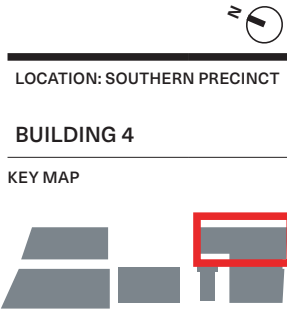
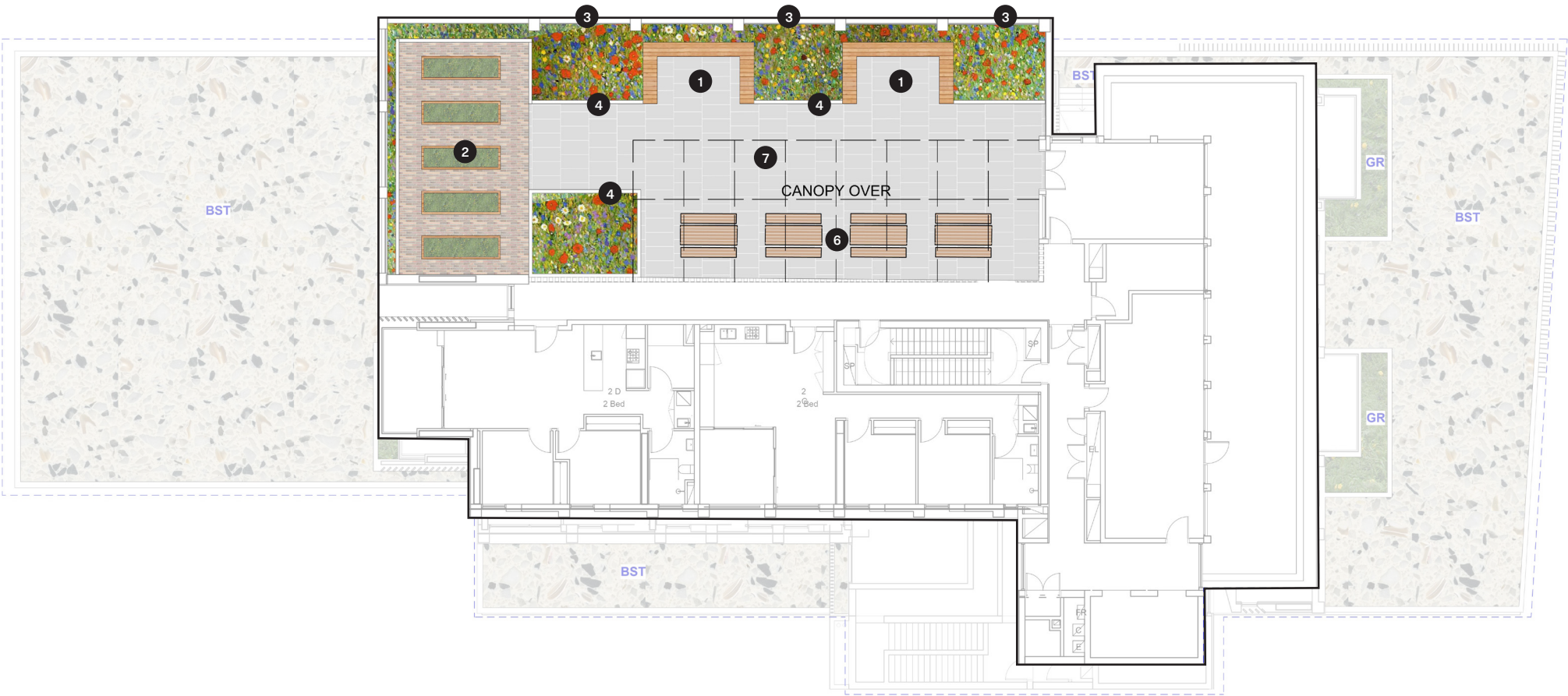
1	Ballast Roof Area (Station box below)
2	Ballast roof
3	Planter to residents balcony

Building 4: Level 09

Building 4 includes a communal roof terrace for the residential tenants. The communal terrace will provide opportunities for tenants to grow edibles and gather in small groups.

An open mesh wraps around the eastern edge of the roof terrace providing a place for climbing plants to create a green screen.

Level 9 | Communal Terrace



KEY	
1	Dining and seating zones
2	Allotment Garden Beds
3	Open mesh for climbing plants
4	Raised planter wall
5	Integrtaed bench seating
6	Group / picnic benches
7	Paving on pedestals

Roof Terrace Materials & Planting Palette

Building 3 | Student Communal Terrace

Hardscape and Finishes

The material palette for the commercial roof terraces comprises of robust and contemporary concrete plank pavers set on pedestals and steel edge planters.

Where seating is integrated into the planter, a timber bench and backrest will provide a comfortable and low maintenance seat at a range of scales.



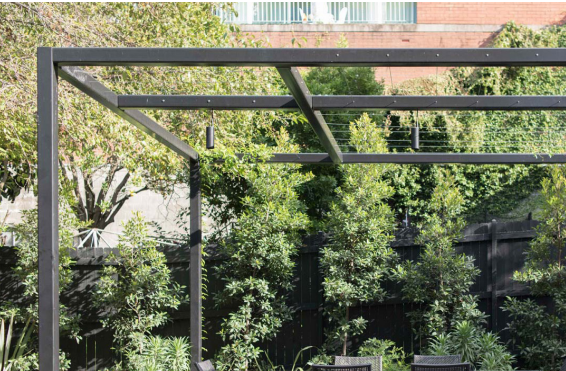
Concrete pavers on pedestals



Low brick wall



Integrated timber benches and raised planters



Shade structures and canopy (to architects design)

Building 4 | Residential Tenants Communal Terrace



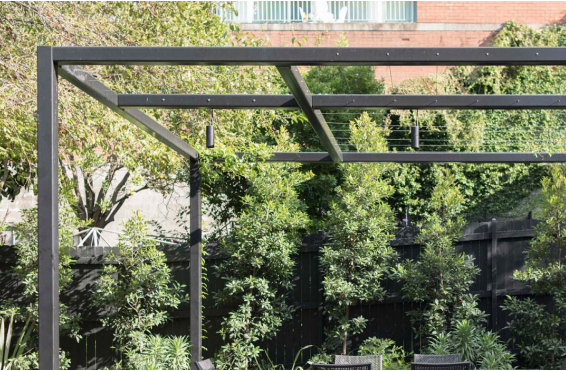
Concrete pavers on pedestals



Brick Wall Planter for allotment garden beds



Integrated timber benches and raised planters



Shade structures and canopy (to architects design)