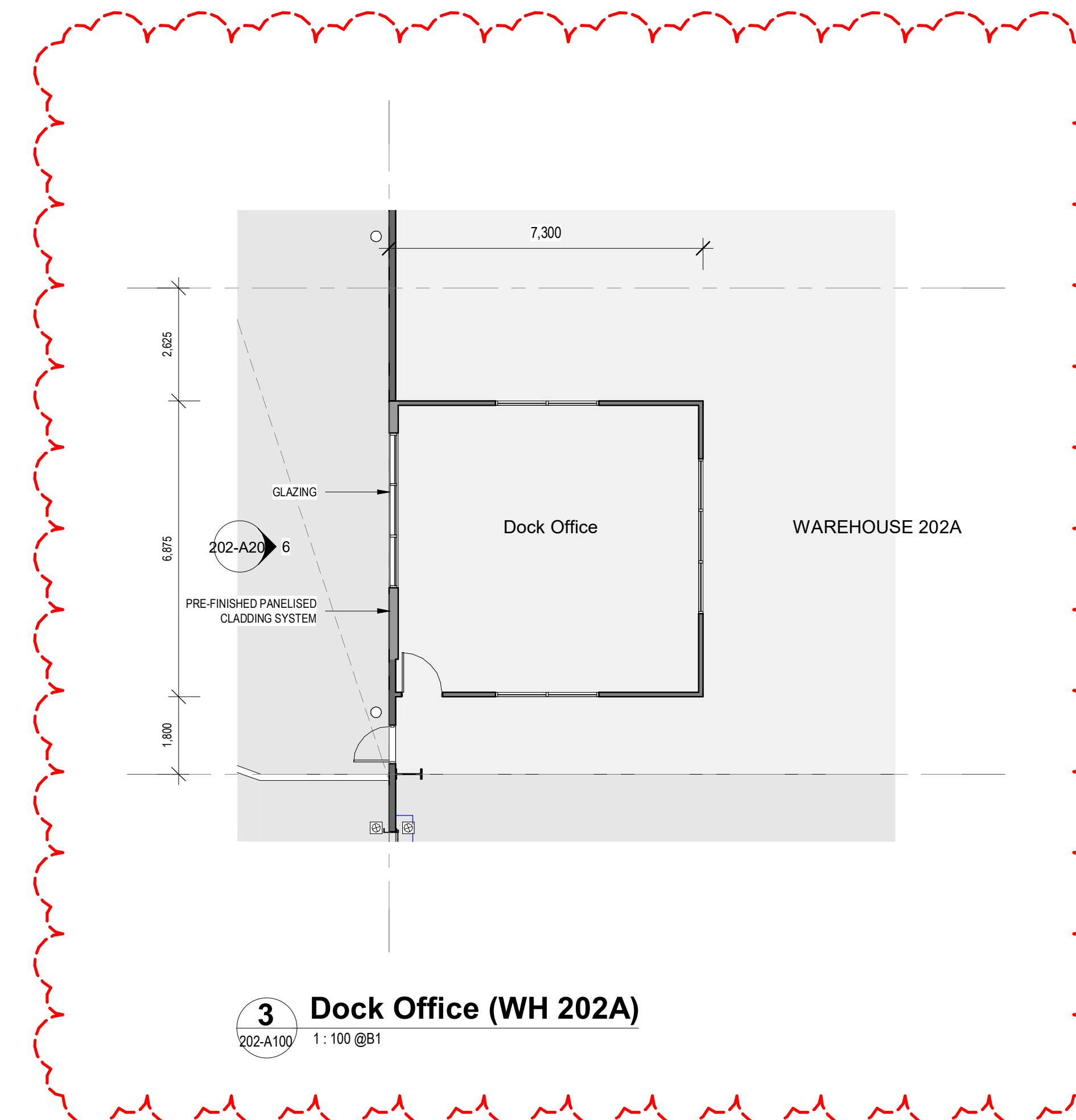
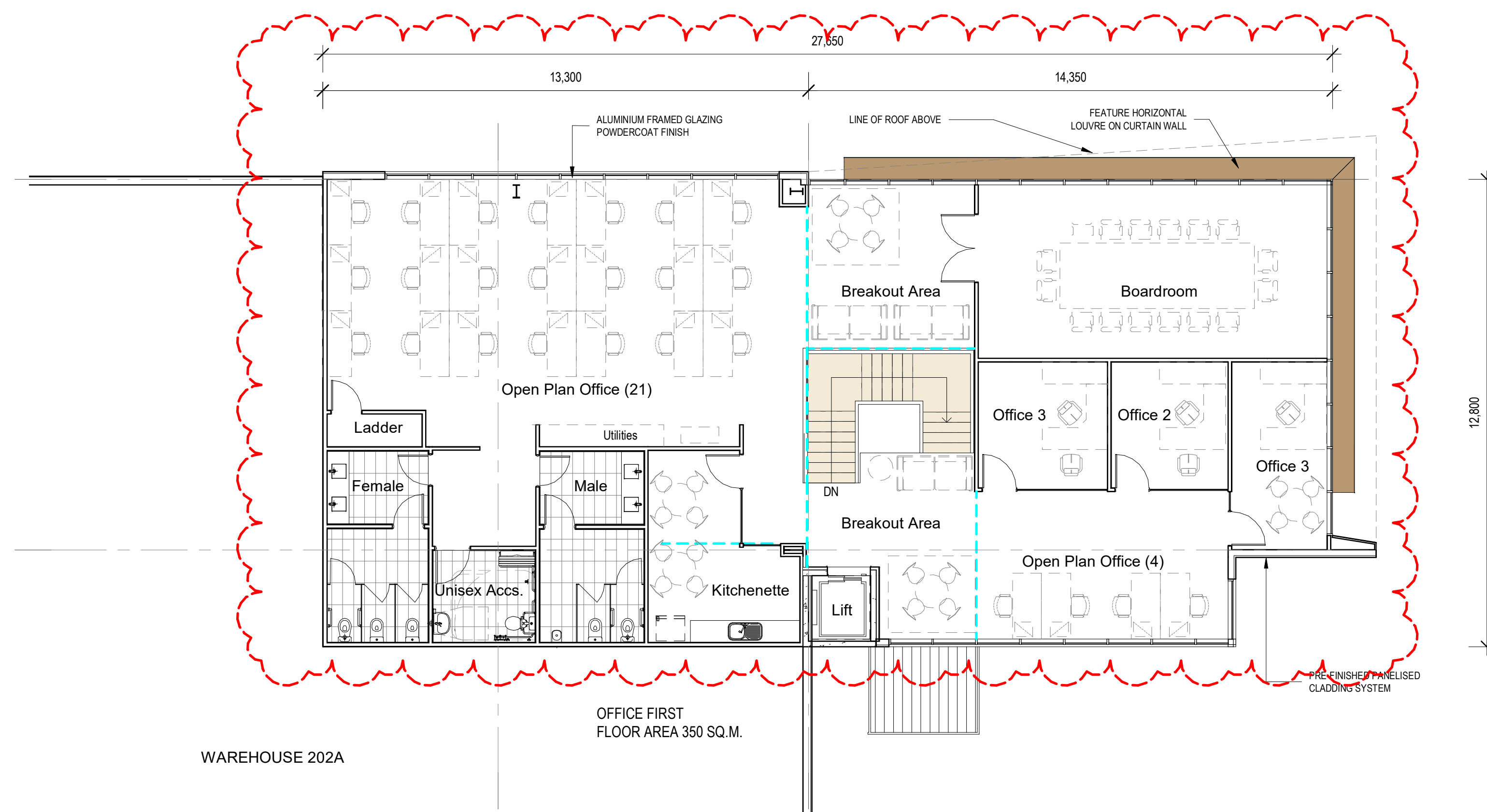


1 Office Ground Floor (WH 202A)
202-A100 1:100 @B1



3 Dock Office (WH 202A)
202-A100 1:100 @B1



2 Office First Floor (WH 202A)
202-A201 1:100 @B1



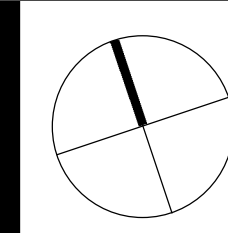
PROJECT MANAGER

PROJECT ESR HORSLEY LOGISTIC PARK
ADDRESS 327-335 BURLY ROAD HORSLEY PARK NSW
PROJECT NUMBER 200226

Rev	Description	Date
B	Development Application Issue	20.10.20
P1	Parking area and Office 204A layout revised. Warehouse 204D hardstand reduced to allow brigade truck turning.	29.01.21
P2	204 Office Plans A & D revised, RSD colour updated	26.04.21
P3	SSDA modifications	30.04.21
P4	Office C internal envelope revised, Office A fitout removed.	24.06.21
P5	Lot 202 Dock Office added, Office A internal fitout added	15.10.21

HL Architects Pty Ltd. This drawing is confidential and is subject to copyright. It may not be copied, used, reproduced or transmitted in any way or in any form without the express permission of HL Architects Pty Ltd.
General Notes:
Architectural drawings to be read in conjunction with all other consultants detailed drawings, specifications & reports.
Do not scale this drawing. Verify all dimensions on site.
Refer all discrepancies to HLA before commencing any work.

HL Architects Pty Ltd A.C.N. 161 638 320
nominated architect: Koi Hong LAU
(Reg No. NSW #1559, QLD #6020, TAS #1101)
e admin@hlarchitects.com.au
t 02 9166 9942
m 0424 160 365
www.hlarchitects.com.au
a Suite 51, 9 George St, North Strathfield NSW 2137



DEVELOPMENT APPLICATION

DRAWING TITLE LOT 202 OFFICE PLAN A
DRAWING NUMBER 200226 - DA - 202-A110

DRAWN MZ
CHK HL
ISSUE JSB/E

P5