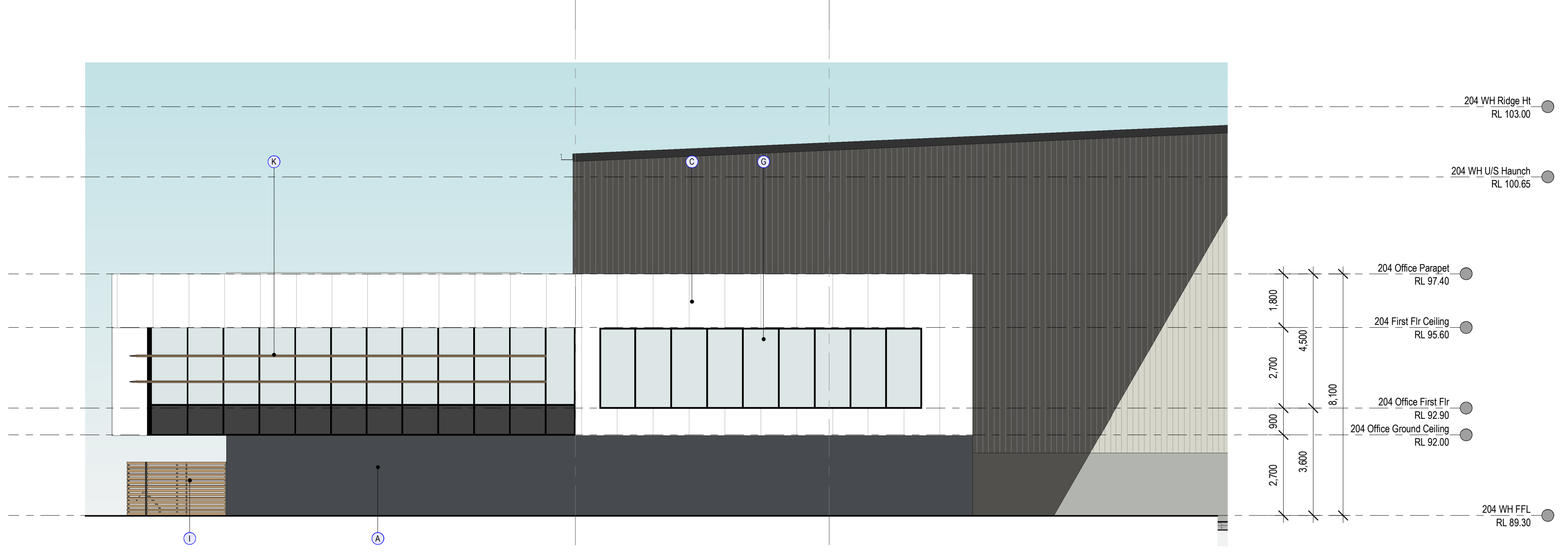
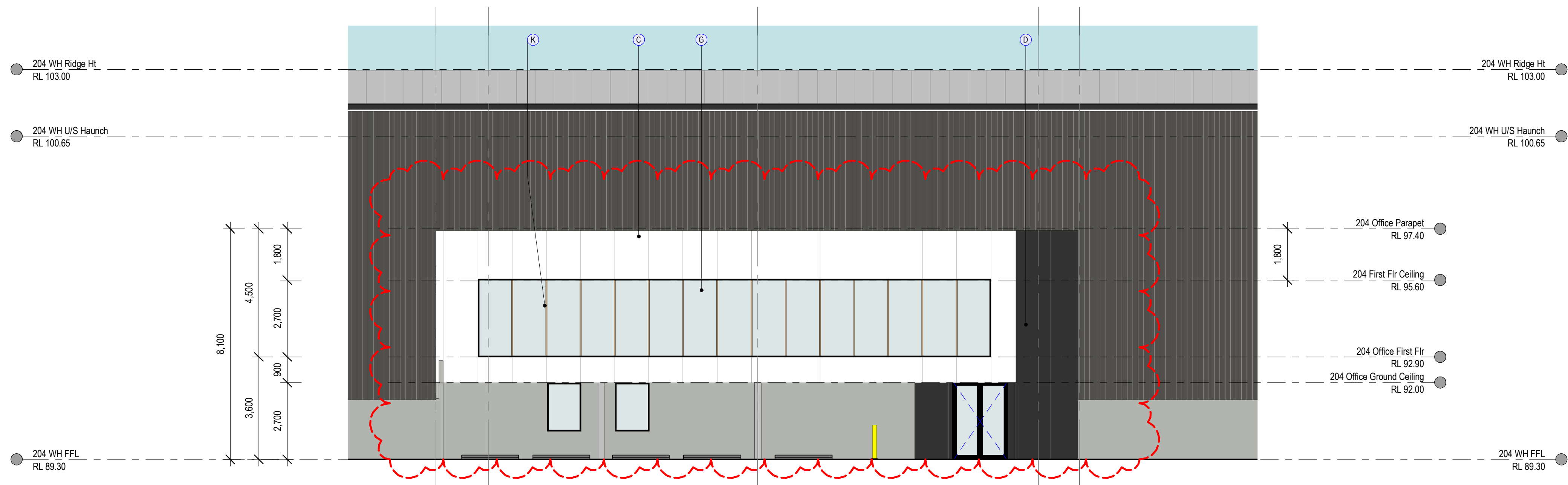


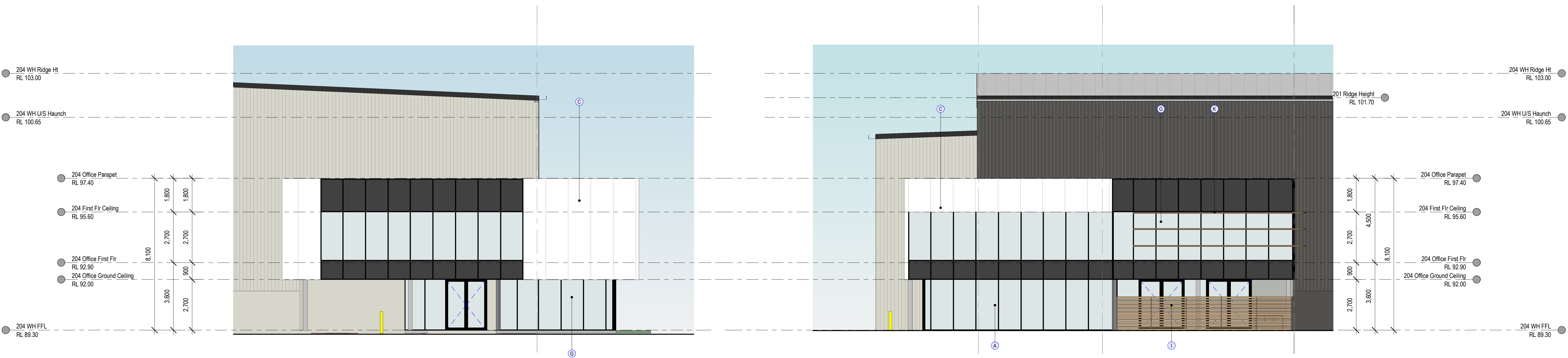
1 Lot 202 Office-A East Elevation
202-A200 1:100 @B1



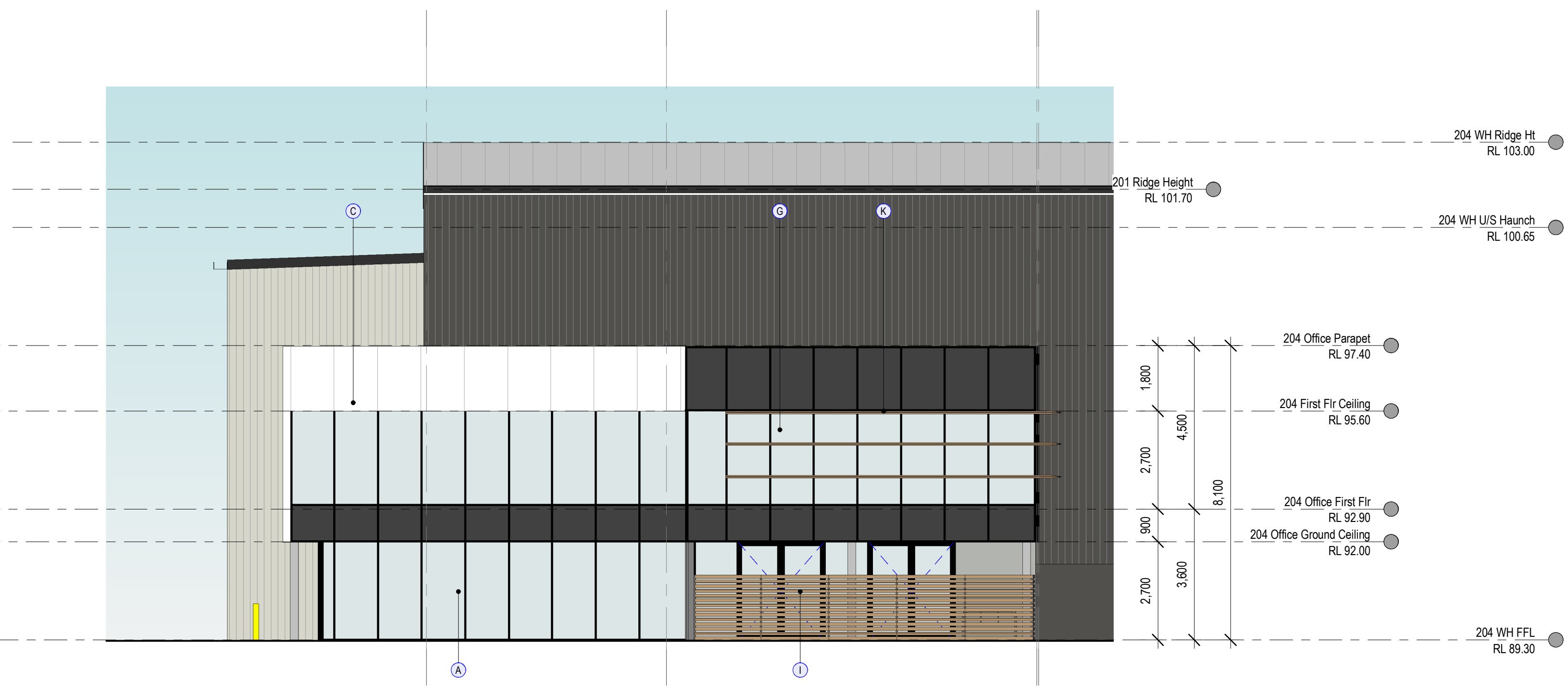
2 Lot 202 Office-A North Elevation
202-A200 1:100 @B1



3 Lot 202 Office-B East Elevation
202-A200 1:100 @B1



4 Lot 202 Office-C South Elevation
202-A200 1:100 @B1



5 Lot 202 Office-C East Elevation
202-A200 1:100 @B1

OFFICE EXTERNAL FINISHES	
(A)	PRECAST CONCRETE - PAINT FINISH TO MATCH DULUX 'CB IRONSTONE'
(B)	PRECAST CONCRETE - PAINT FINISH TO MATCH DULUX 'CB SHALE GREY'
(C)	PRE-FINISHED PANELISED CLADDING SYSTEM COLOURS TO MATCH DULUX 'VIVID WHITE'
(D)	PRE-FINISHED PANELISED CLADDING SYSTEM COLOURS TO MATCH DULUX 'CB IRONSTONE'
(E)	PRE-FINISHED PANELISED LIGHT WEIGHT CLADDING FINISHES TO SIMULATE TIMBER FINISHES
(F)	ALUMINUM FEATURE SUN-SHADING. POWDERCOATED FINISH COLOUR TO MATCH 'CITI SILVER PEARL'
(G)	POWDERCOATED ALUMINUM FRAMED GLAZING TO COMPLY WITH MCC SECTION J
(H)	HORIZONTAL FEATURE SLAT SCREEN ON PAINTED COMPRESSED FIBRE CEMENT CLAD WALL - COLOUR TO MATCH 'KNOTWOOD'
(I)	HORIZONTAL SLAT SCREEN FENCING TO OUTDOOR AREA - COLOUR TO MATCH 'KNOTWOOD'
(J)	PERFORATED ALUMINUM PANEL SCREENING. POWDER COATED FINISH TO MATCH 'ZEUS GREY & ZEUS MONUMENT'
(K)	PROPRIETARY HORIZONTAL/VERTICAL LOUVER SUNSHADING. PRE-FINISHED TO SIMULATE TIMBER FINISH

DEVELOPMENT APPLICATION



PROJECT MANAGER

PROJECT ESR HORSLEY LOGISTIC PARK
ADDRESS 327-335 BURLEY ROAD
HORSLEY PARK NSW
PROJECT NUMBER 200226

Rev	Description	Date
P2	SSDA modifications.	30.04.21
P3	Warehouse internal layout revised to suit 2 terraces. Office B&C deleted. Office D internal wall re-signed. Parking number updated to suit.	16.06.21
P4	Lot 204 Warehouse Tenancy break-up revised, with associated changes in docks and office details.	16.07.21
P5	Office B entry and lobby areas and elevations revised.	16.07.21
P6	Windows added to Office B.	21.07.21
P7	Lot 204 renumbered as Lot 202. Tenancy configuration amended with associated loading area and parking layout adjustment as clouded.	25.08.21

HL Architects Pty Ltd. This drawing is confidential and is subject to copyright. It may not be copied, used, reproduced or transmitted in any way or in any form without the express permission of HL Architects Pty Ltd.

General Notes:
Architectural drawings to be read in conjunction with all other consultants detailed drawings, specifications & reports.
Do not scale this drawing. Verify all dimensions on site.
Refer all discrepancies to HLA before commencing any work.

HL Architects Pty Ltd A.C.N. 161 638 320
nominated architect: KOK HONG LAU
(Reg No. NSW #1555, QLD #5030, TAS #1101)

e admin@hlarchitects.com.au
t 02 9166 9942
m 0424 160 365
w www.hlarchitects.com.au
a Suite 53, 9 George St, North Strathfield NSW 2137



DRAWING TITLE LOT 202 OFFICE ELEVATIONS
DRAWING NUMBER 200226 - DA - 202-A201

DRAWN AB
CHK HL
ISSUE

P7