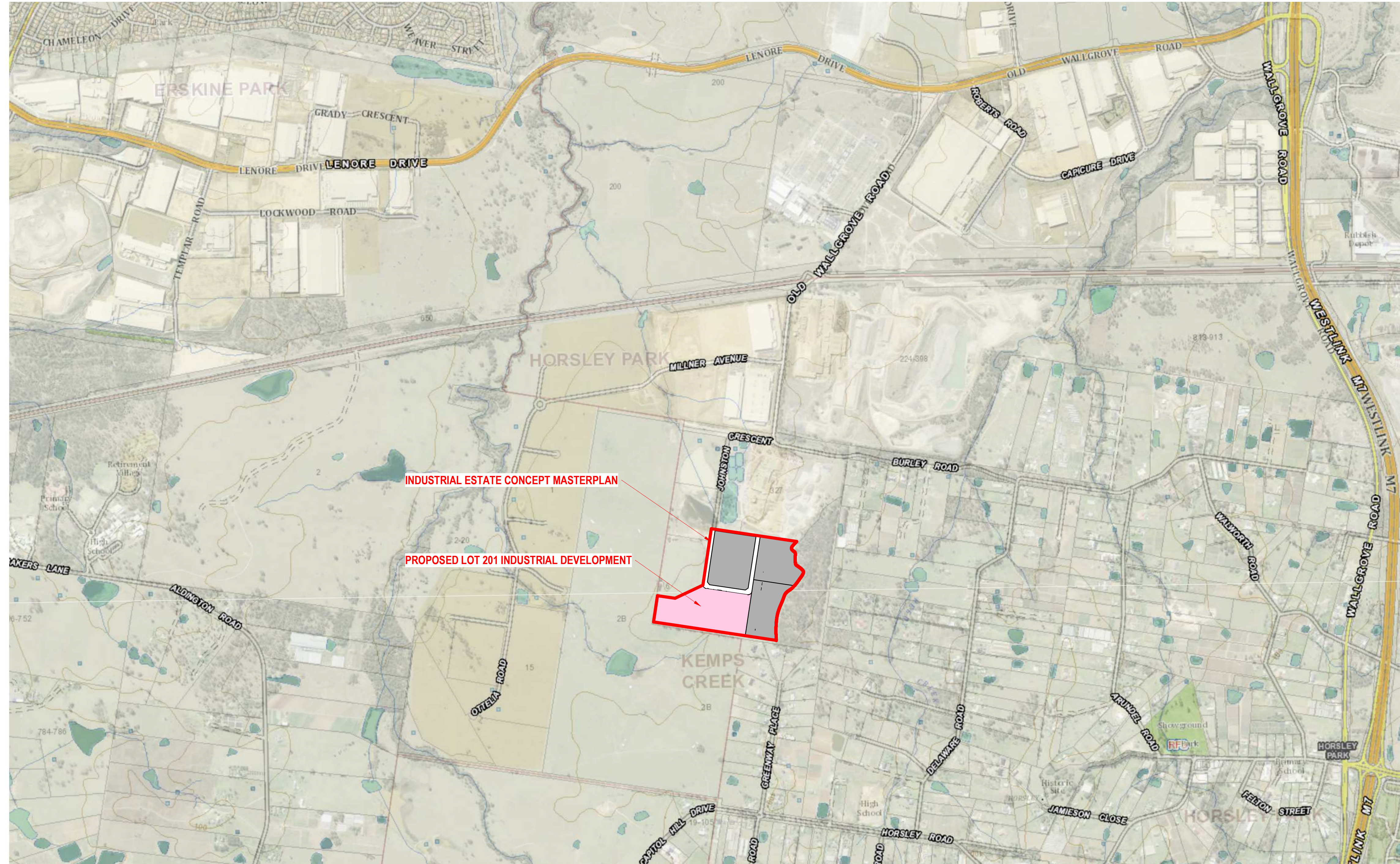


PROPOSED INDUSTRIAL ESTATE & WAREHOUSE FACILITY DEVELOPMENT

Proposed Lot 201 of Lot 103 in DP1214912 of 327-335 Burley Road HORSLEY PARK, NSW 2175



Drg. No.	Sheet Name	Rev
200226-DA-201-A000	LOT 201 TITLE SHEET & DRAWING LIST	P3
200226-DA-201-A100	LOT 201 SITE & FACILITY PLAN	P17
200226-DA-201-A110	LOT 201 OFFICE PLANS 1	P6
200226-DA-201-A111	LOT 201 OFFICE 2 & 3 PLANS	P5
200226-DA-201-A200	LOT 201 WAREHOUSE ELEVATIONS	P6
200226-DA-201-A201	LOT 201 OFFICE 1 ELEVATIONS	P2
200226-DA-201-A202	LOT 201 OFFICE 2 & 3 ELEVATIONS	P3
200226-DA-201-A210	LOT 201 WAREHOUSE SECTIONS	P6
200226-DA-201-A500	LOT 201 ARTIST IMPRESSIONS	P1

30/04/2021 3:44:42 PM BM 380.6277.635 Burley_Road_C1_V3_Burley_Road



PROJECT MANAGER

PROJECT ESR HORSLEY LOGISTIC PARK
ADDRESS 327-335 BURLEY ROAD
HORSLEY PARK NSW
PROJECT NUMBER 200226

Rev	Description	Date
A	DA Issue	30.03.20
B	Development Application Issue	22.06.20
C	Development Application Issue	20.10.20
P1	Draft SSDA Issue	15.02.21
P2	Office 2A & 2B elevations updated, GFA updated, Minor updates to development table.	01.04.21
P3	SSDA modifications.	30.04.21

H/L Architects Pty Ltd. This drawing is confidential and is subject to copyright. It may not be copied, used, reproduced or transmitted in any way or in any form without the express permission of H/L Architects Pty Ltd.
General Notes:
Architectural drawings to be read in conjunction with all other consultants' detailed drawings, specifications & reports.
Do not scale this drawing. Verify all dimensions on site.
Refer all discrepancies to H/LA before commencing any work.

H/L Architects Pty Ltd A.C.N. 161 638 320
Incorporated in Australia
@Reg No. NSW #1559, QLD #6000, TAS #11011
t admin@hlaarchitects.com.au
f 02 9166 9942
m 0424 160 365
www.hlaarchitects.com.au
Suite S1, 9 George St, North Strathfield NSW 2137



DEVELOPMENT APPLICATION

DRAWING TITLE LOT 201 TITLE SHEET & DRAWING LIST
DRAWING NUMBER 200226 - DA - 201-A000

DRWN HL
CHK HL
ISSUE HL

P3

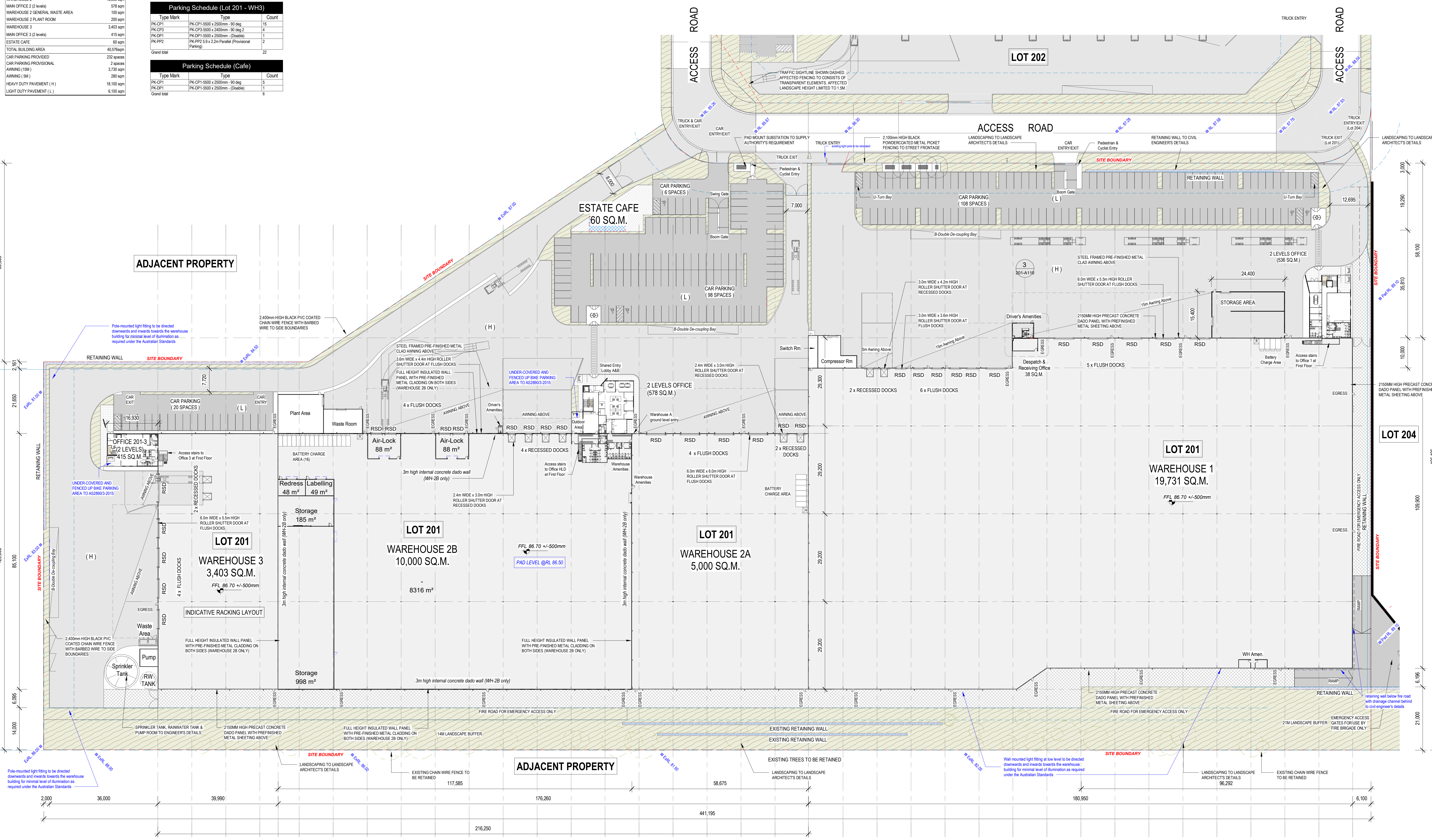
DEVELOPMENT SUMMARY (LOT 201)	
SITE 1 AREA (Warehouse 1)	35,882 sqm
SITE 2 AREA (Warehouse 2 & 3 & Cafe Site)	40,728 sqm
SITE AREA (Lot 201 Total)	77,310 sqm
EFFICIENCY	52.48%
WAREHOUSE 1	19,731 sqm
MAN OFFICE 1 (2 Level)	536 sqm
WAREHOUSE 1 DRIVERS AMENITIES	38 sqm
WAREHOUSE 1 Switch & Compressor Room	140 sqm
WAREHOUSE 1 Storage Area	379 sqm
WAREHOUSE 2	15,003 sqm
MAN OFFICE 2 (2 levels)	576 sqm
WAREHOUSE 2 GENERAL WASTE AREA	100 sqm
WAREHOUSE 2 PLANT ROOM	200 sqm
WAREHOUSE 3	3,403 sqm
MAN OFFICE 3 (2 levels)	415 sqm
ESTATE CAFE	60 sqm
TOTAL BUILDING AREA	40,576 sqm
CAR PARKING PROVIDED	232 spaces
CAR PARKING PROVISIONAL	2 spaces
AWNING (5M)	3,730 sqm
AWNING (5M)	280 sqm
HEAVY DUTY PAVEMENT (H)	18,100 sqm
LIGHT DUTY PAVEMENT (L)	6,100 sqm

Parking Schedule (Lot 201 WH1)		
Type Mark	Type	Count
PK-CP1	PK-CP1-5500 x 2500mm - 90 deg	106
PK-CP1	PK-CP1-5500 x 2500mm - (Disable)	2
Grand total		108

Parking Schedule (Lot 201 WH2)		
Type Mark	Type	Count
PK-CP1	PK-CP1-5500 x 2500mm - 90 deg	96
PK-CP1	PK-CP1-5500 x 2500mm - (Disable)	2
Grand total		98

Parking Schedule (Lot 201 - WH3)		
Type Mark	Type	Count
PK-CP1	PK-CP1-5500 x 2500mm - 90 deg	15
PK-CP3	PK-CP3-5500 x 2500mm - 90 deg 2	4
PK-CP1	PK-CP1-5500 x 2500mm - (Disable)	1
PK-PP2	PK-PP2 5.9 x 2.2m Parallel (Provisional Parking)	2
Grand total		22

Parking Schedule (Cafe)		
Type Mark	Type	Count
PK-CP1	PK-CP1-5500 x 2500mm - 90 deg	5
PK-CP1	PK-CP1-5500 x 2500mm - (Disable)	1
Grand total		6



1 Site Facilities Plan (Lot 201)
MS-A010 1:500 @B1



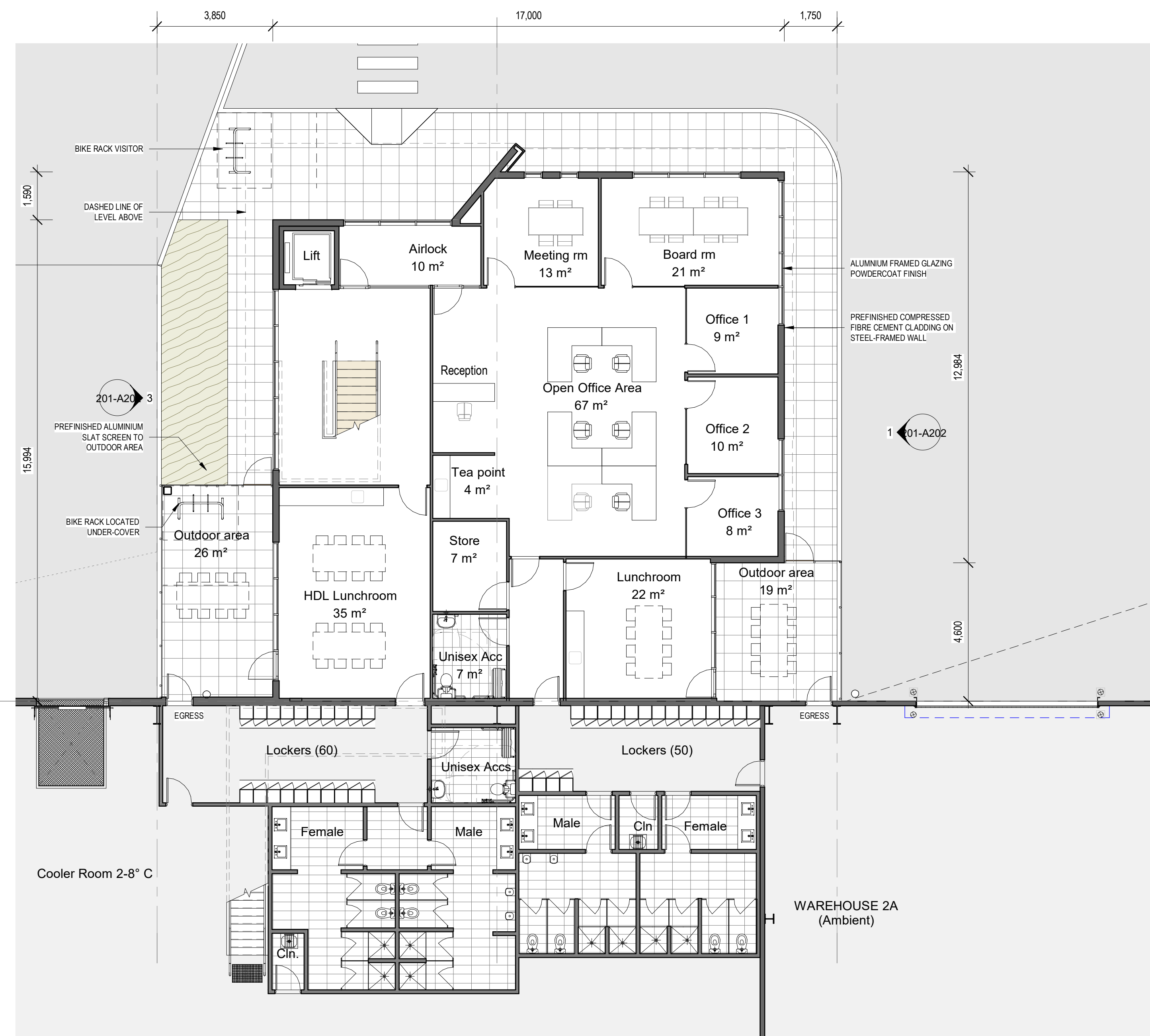
PROJECT: ESR HORSLEY LOGISTIC PARK
 ADDRESS: 327-335 BURLY ROAD, HORSLEY PARK NSW
 PROJECT NUMBER: 200226

Rev	Description	Date
P13	Amendments to Warehouse 1 base-building works.	09.04.21
P14	Warehouse 1 GLA revised.	12.04.21
P15	IM 1&2 base built comments revised. Minor revision to external finishes.	22.04.21
P16	RSD sizes updated. WH 1 Storage area added, WH 2A battery charge relocated, Truck egress updated, WH 1 Dock Office layout added, Fence note updated, DP colour to match wall behind, RSD and WH door colour updated.	28.04.21
P17	SSDA modifications.	30.04.21

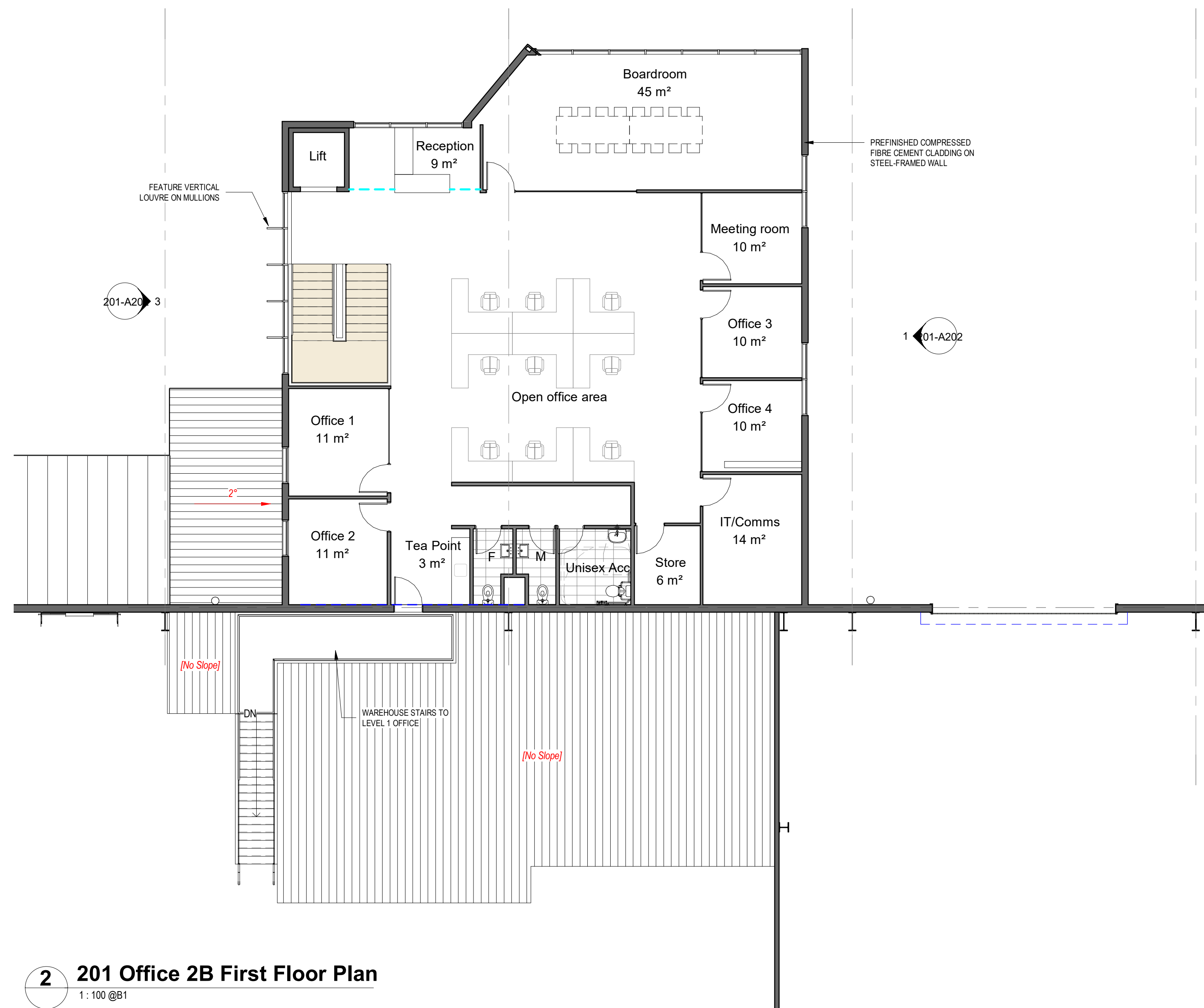
HL Architects Pty Ltd. This drawing is confidential and is subject to copyright. It may not be copied, used, reproduced or transmitted in any way or in any form without the express permission of HL Architects Pty Ltd.
 HL Architects Pty Ltd A.C.N. 161 638 320
 9/10-12/11, NSW #155, OLD ROAD, TAS #1101
 admin@hlarchitects.com.au
 02 9161 9942
 0424 160 365
 www.hlarchitects.com.au
 Suite 51, 9 George St, North Strathfield NSW 2137



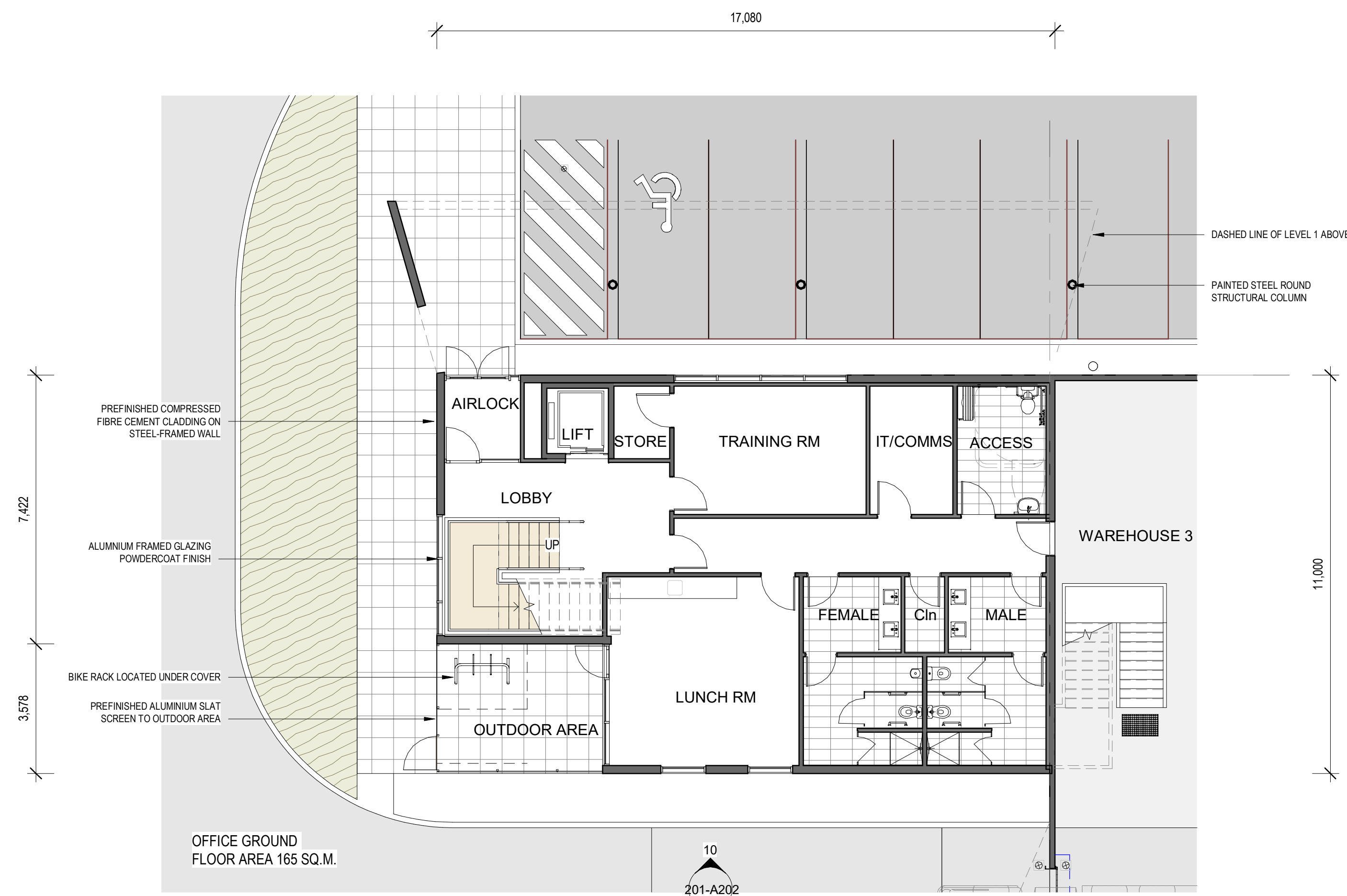
DEVELOPMENT APPLICATION
 DRAWING TITLE: LOT 201 SITE & FACILITY PLAN
 DRAWING NUMBER: 200226 - DA - 201-A100
 P17



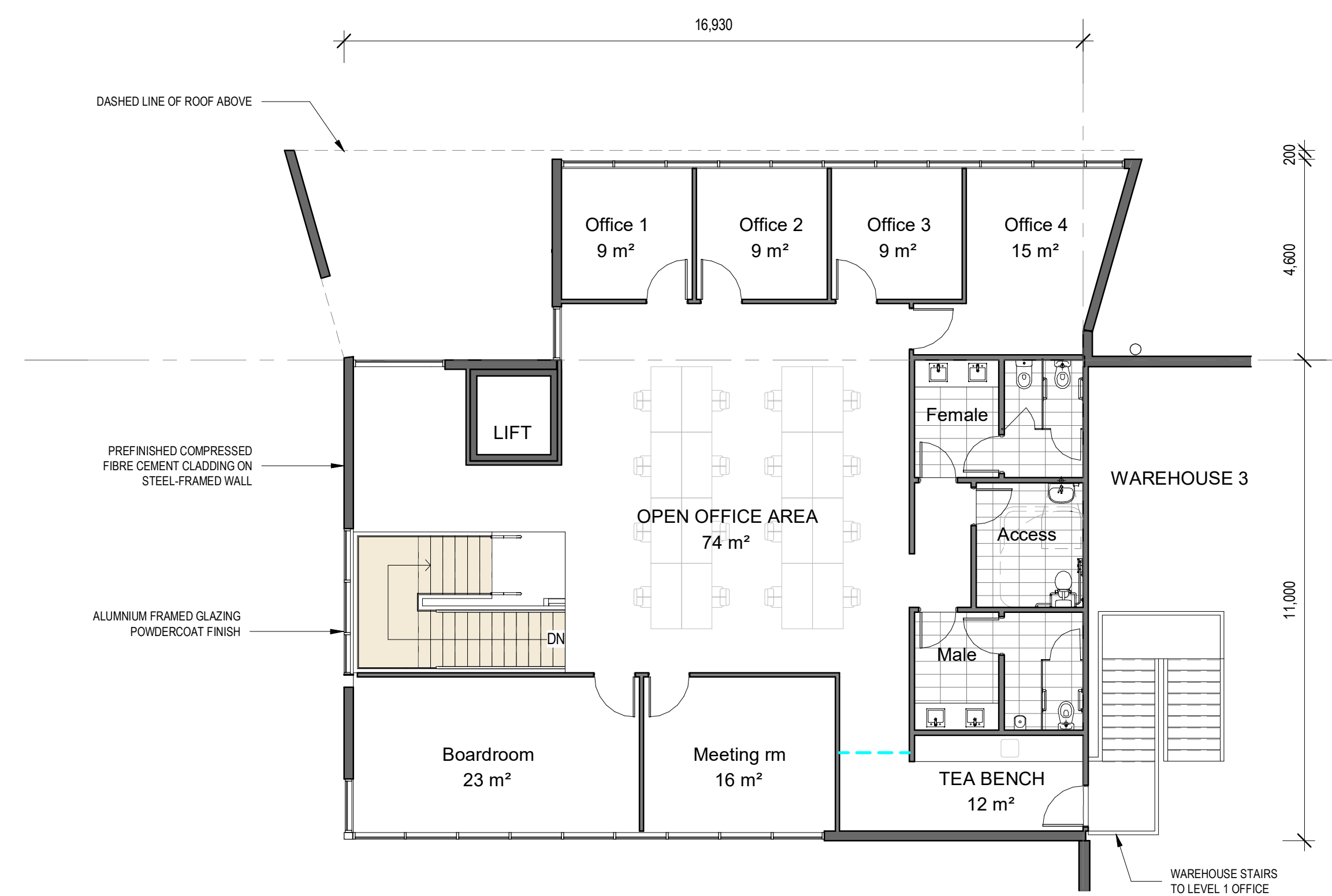
1 201 Office 2A Ground Floor Plan
1:100 @B1



2 201 Office 2B First Floor Plan
1:100 @B1



3 201 Main Office 3 Ground Floor Plan
1:100 @B1



4 201 Main Office 3 First Floor Plan
1:100 @B1

30/04/2024 3:46:49 PM BIM 360://2377-335-Burley-ROAD-1/3-Burley-ROAD



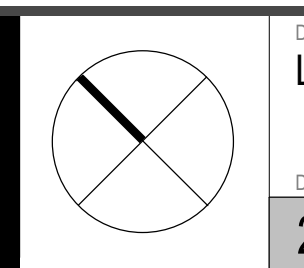
PROJECT MANAGER

PROJECT ESR HORSLEY LOGISTIC PARK
ADDRESS 327-335 BURLEY ROAD HORSLEY PARK NSW
PROJECT NUMBER 200226

Rev	Description	Date
P1	Updated Lot 201 elevations & WH 1&2 office floor plans for review.	10.02.21
P2	Draft SSDA issue.	15.02.21
P3	Office 2A & 2B floor plans updated.	26.03.21
P4	Office 2A & 2B elevations updated, GFA updated. Minor updates to development table.	01.04.21
P5	SSDA modifications.	30.04.21

HL Architects Pty Ltd. This drawing is confidential and is subject to copyright. It may not be copied, used, reproduced or transmitted in any way or in any form without the express permission of HL Architects Pty Ltd.
General Notes:
Architectural drawings to be read in conjunction with all other consultants detailed drawings, specifications & reports.
Do not scale this drawing. Verify all dimensions on site.
Refer all discrepancies to HLA before commencing any work.

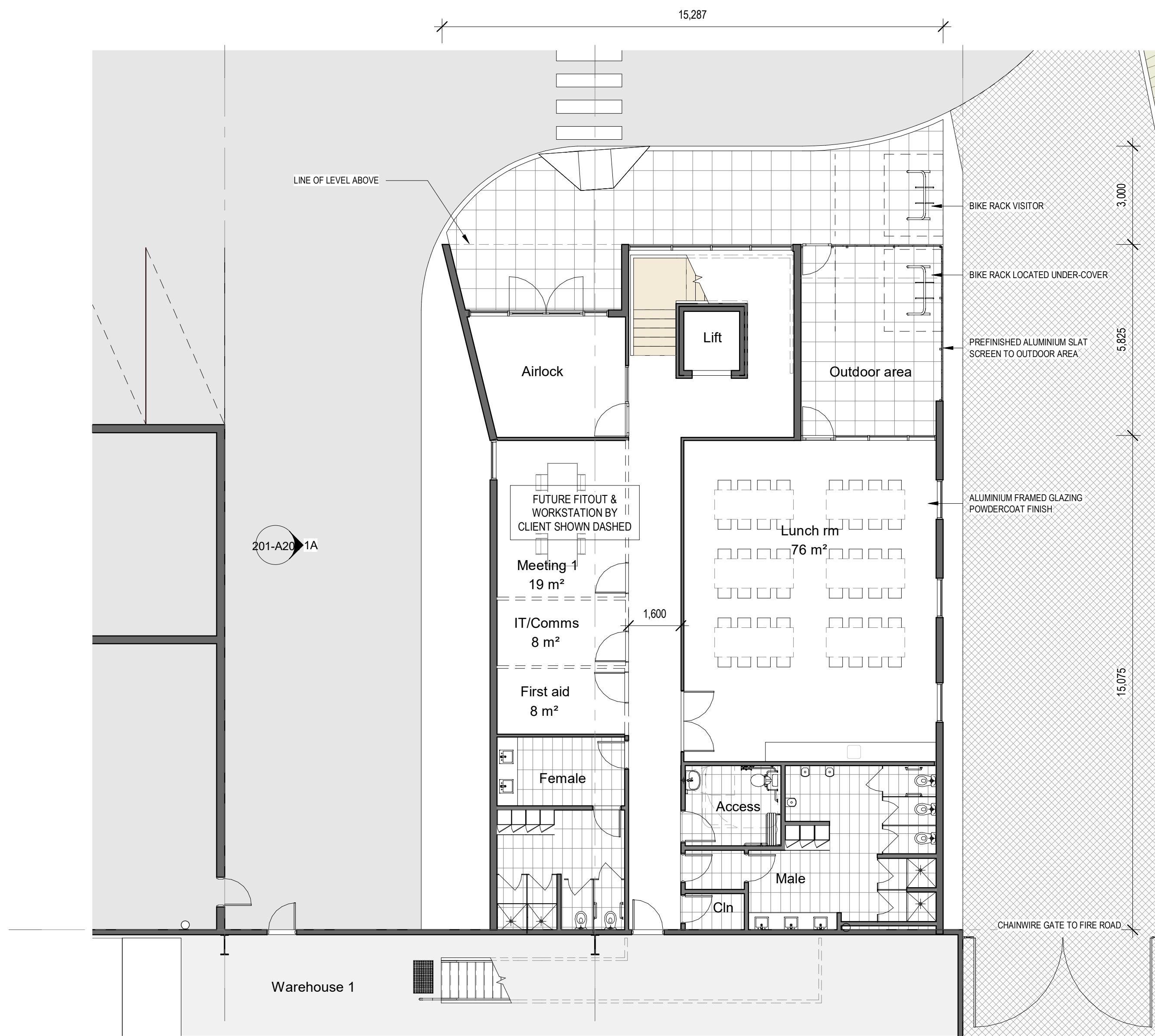
HL Architects Pty Ltd A.C.N. 161 638 320
nominated architect: KIM HONG LIAU
@Reg No. NSW #1559, QLD #1002, TAS #11011
e admin@hlarchitects.com.au
t 02 9166 9942
m 0424 160 365
www.hlarchitects.com.au
Suite S3, 9 George St, North Strathfield NSW 2137



DEVELOPMENT APPLICATION

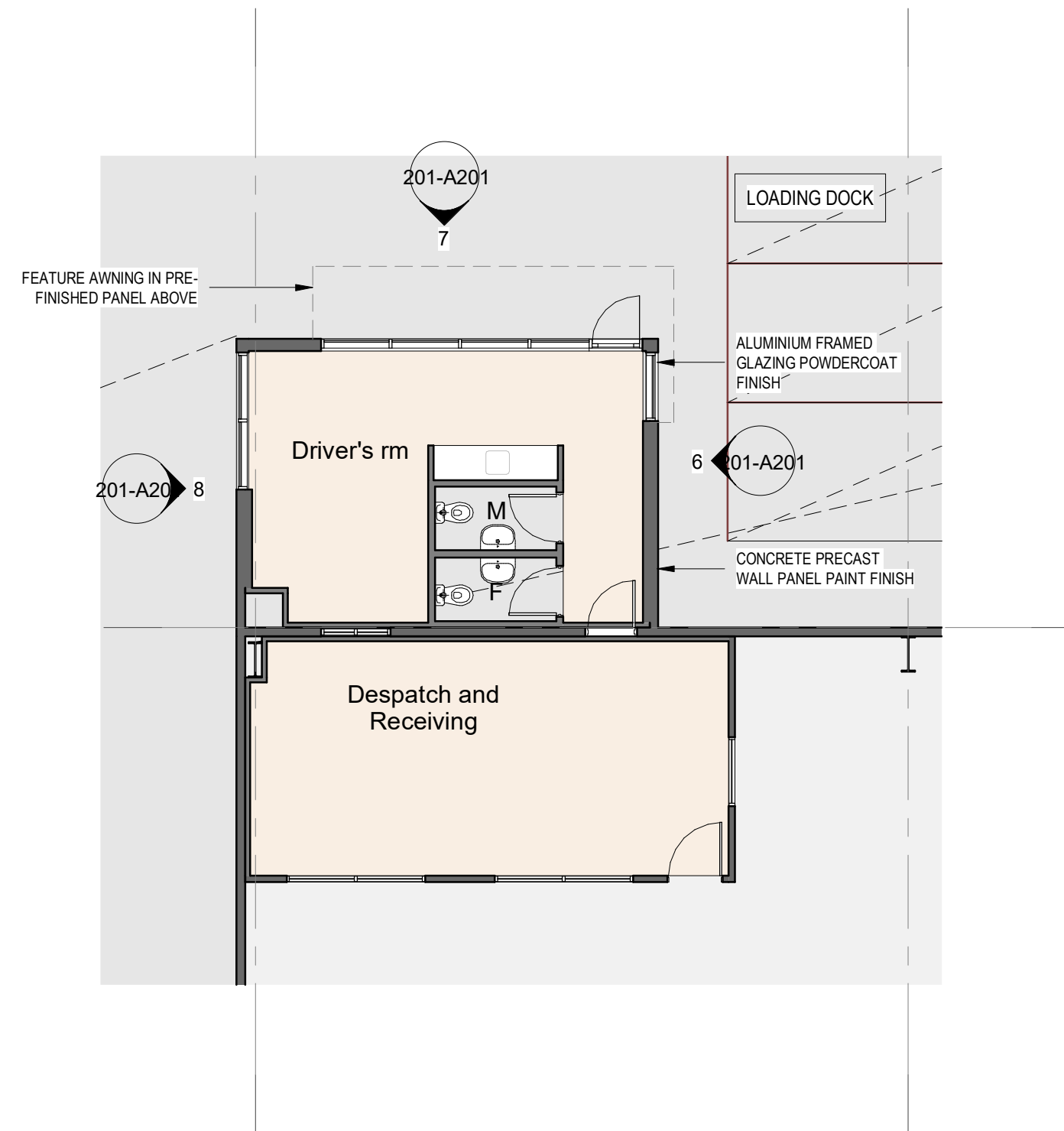
DRAWING TITLE LOT 201 OFFICE 2 & 3 PLANS
DRAWING NUMBER 200226 - DA - 201-A111
DRWN AB
CHK HL
ISSUE

P5



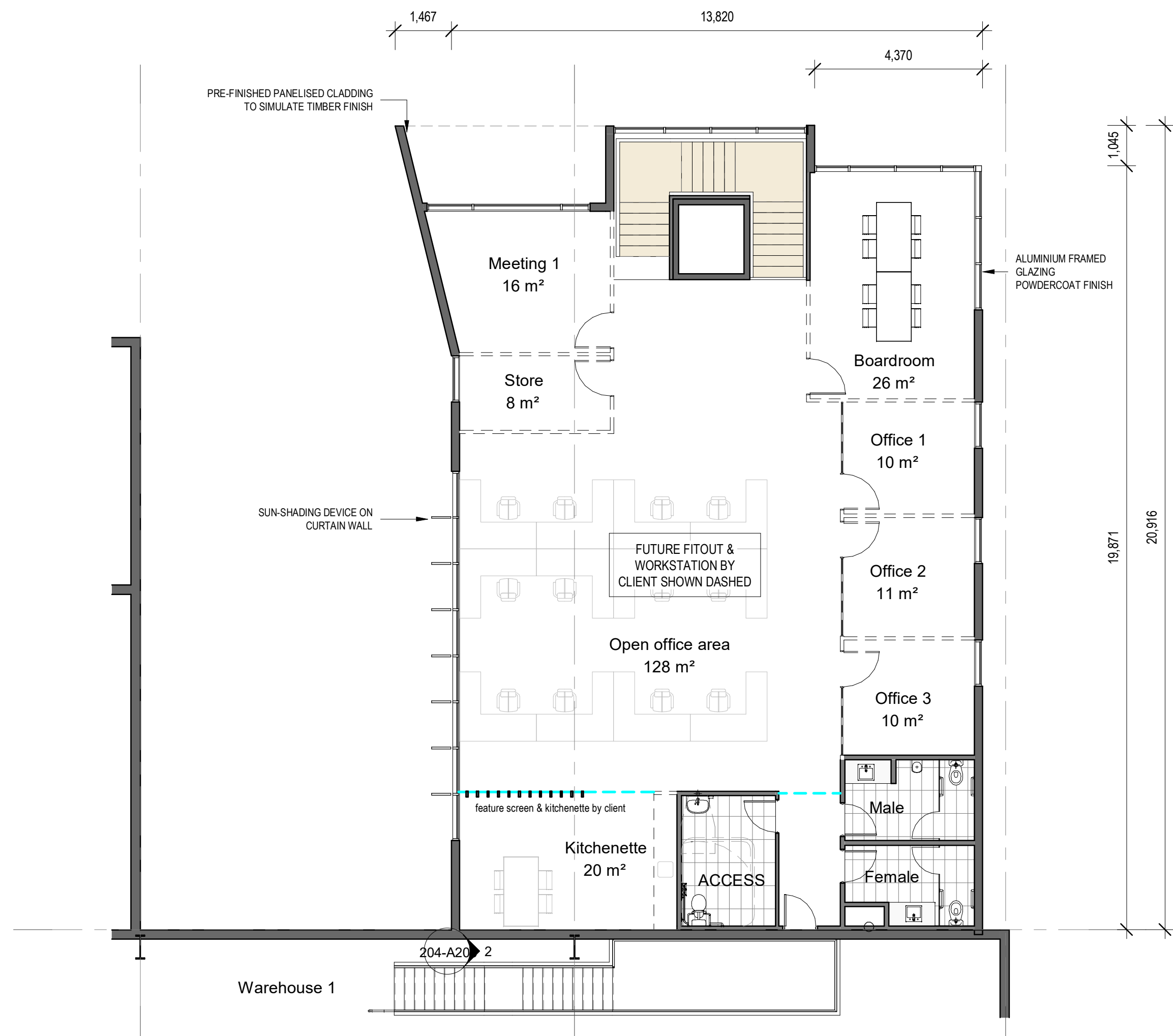
1 201 Main Office 1 Ground Floor Plan

1:100 @B1



3 201 Warehouse 1 Dock Office

1:100 @B1



2 201 Main Office 1 First Floor Plan

1:100 @B1

30/04/2024 3:46:17 PM BIM:30013277-035-Burley_Road_CAD_V3-Burley_Road



PROJECT NUMBER

PROJECT ESR HORSLEY LOGISTIC PARK
 ADDRESS 327-335 BURLEY ROAD
 HORSLEY PARK NSW
 PROJECT NUMBER 200226

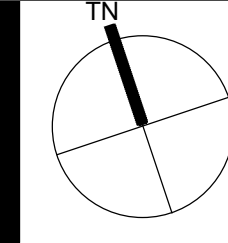
Rev	Description	Date
P2	Draft SSDA issue	15.02.21
P3	Office 2A & 2B floor plans updated	26.03.21
P4	Amendments to Warehouse 1 base-building works	09.04.21
P5	RSD sizes updated, WH 1 Storage area added, WH 2A battery charge relocated, Truck egress updated, WH 1 Dock Office layout added, Fence note updated, DP colour to match wall behind, RSD and WH door colour updated	26.04.21
P6	SSDA modifications	30.04.21

HL Architects Pty Ltd. This drawing is confidential and is subject to copyright. It may not be copied, used, reproduced or transmitted in any way or in any form without the express permission of HL Architects Pty Ltd.

General Notes:
 Architectural drawings to be read in conjunction with all other consultants detailed drawings, specifications & reports.
 Do not scale this drawing. Verify all dimensions on site.
 Refer all discrepancies to HLA before commencing any work.

HL Architects Pty Ltd A.C.N. 161 638 320
 nominated architect: KOK HONG LAU
 (Reg No. NSW #1559, QLD #6000, TAS #1101)

• admin@hlarchitects.com.au
 t 02 9199 9942
 m 0424 160 365
 www.hlarchitects.com.au
 Suite S3, 9 George St, North Strathfield NSW 2137



DEVELOPMENT APPLICATION

DRAWING TITLE LOT 201 OFFICE PLANS 1
 DRAWING NUMBER 200226 - DA - 201-A110

DRWN HL
 CHK HL
 ISSUE

P6

30/04/2024 2:47:41 PM BIM:300-0207-035-Burley_Rd2_CV-Burley_Rd14



PROJECT MANAGER

PROJECT ESR HORSLEY LOGISTIC PARK
 ADDRESS 327-335 BURLEY ROAD HORSLEY PARK NSW
 PROJECT NUMBER 200226

Rev	Description	Date
P1	Updated Lot 201 elevations & WH 1&2 office floor plans for review.	10.02.21
P2	Draft SSDA issue.	15.02.21
P3	Elevation wall colours updated.	23.02.21
P4	Office 2A & 2B elevations updated. GFA updated. Minor updates to development table.	01.04.21
P5	WH 1&2 base built contents revised. Minor revision to external finishes.	22.04.21
P6	SSDA modifications.	30.04.21

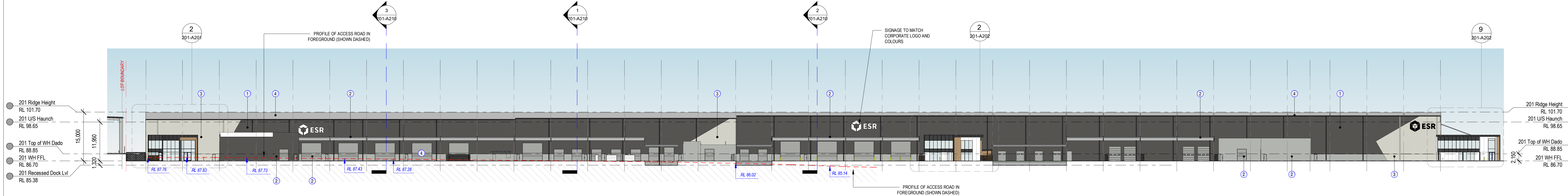
HL Architects Pty Ltd. This drawing is confidential and is subject to copyright. It may not be copied, used, reproduced or transmitted in any way or in any form without the express permission of HL Architects Pty Ltd.
 General Notes:
 Architectural drawings to be read in conjunction with all other consultants detailed drawings, specifications & reports.
 Do not scale this drawing. Verify all dimensions on site.
 Refer all discrepancies to HLA before commencing any work.

HL Architects Pty Ltd A.C.N. 161 638 320
 nominated architect: KIM HONG (AU)
 Reg No. NSW #1556, QLD #6020, TAS #11011
 e admin@hlarchitects.com.au
 t 02 9166 9942
 m 0424 160 365
 www.hlarchitects.com.au
 Suite S3, 9 George St, North Strathfield NSW 2137

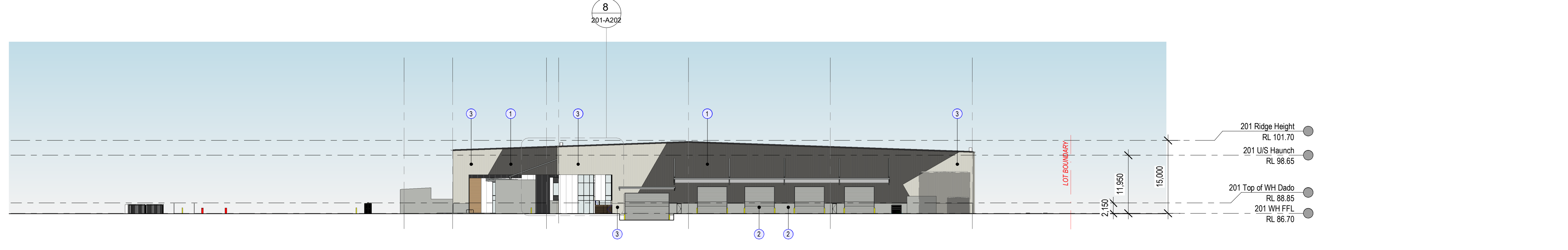


DEVELOPMENT APPLICATION

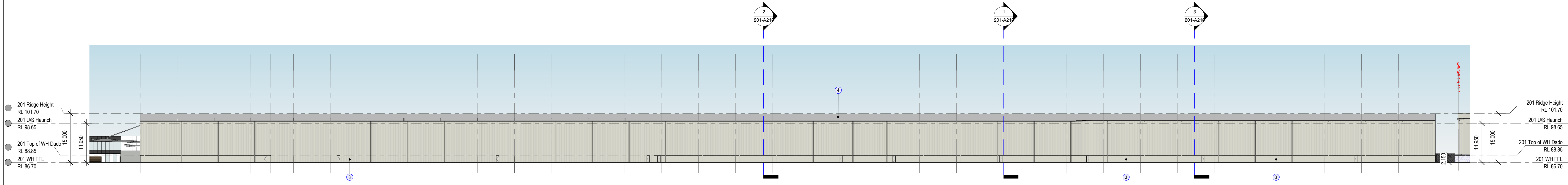
WAREHOUSE EXTERNAL FINISHES Lot (201)	
①	PRE-FINISHED METAL CLADDING - COLORBOND MONUMENT
②	PRECAST CONCRETE - PAINT FINISH TO MATCH COLORBOND SHALE GREY
③	PRE-FINISHED METAL CLADDING - COLORBOND 'SURFIMST' VERTICAL SPAN
④	COLORBOND ROOF SHEETING WITH 10% TRANSLUCENT SHEETING
⑤	PAINT FINISH TO MATCH COLORBOND 'SURFIMST'



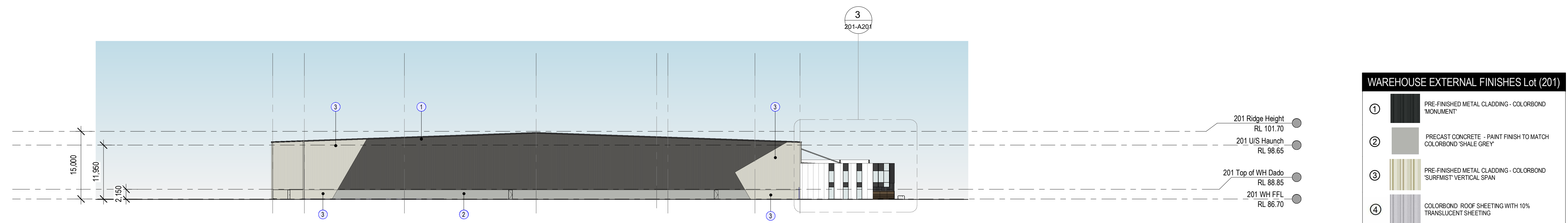
1 Lot 201 North Elevation (Access Road)
 1:500 @B1



3 Lot 201 West Elevation
 1:500 @B1



4 Lot 201 South Elevation
 1:500 @B1



6 Lot 201 East Elevation
 1:500 @B1



1A 201 West Elevation (Office 1)

201-A110 1:100 @B1

2 201 North Elevation (Office 1)

201-A200 1:100 @B1

3 201 East Elevation (Office 1)

201-A200 1:100 @B1



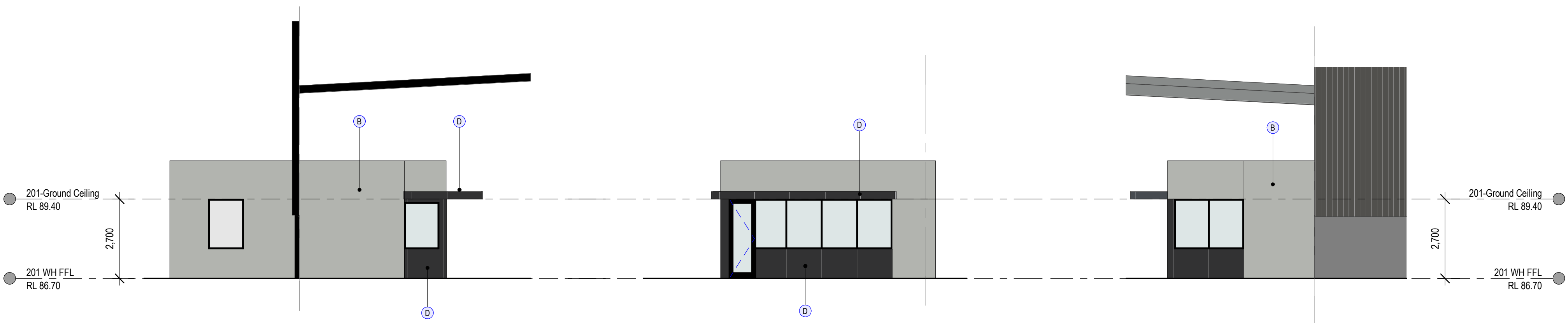
4 201 - Office 1 3D View Entry

@B1



5 201 - Office 1 3D View

@B1



6 201 Dock Office Eastern Elevation

201-A100 1:100 @B1

7 201 Dock Office Northern Elevation

201-A100 1:100 @B1

8 201 Dock Office Western Elevation

201-A100 1:100 @B1

OFFICE EXTERNAL FINISHES	
Ⓐ	PRECAST CONCRETE - PAINT FINISH TO MATCH DULUX 'CB IRONSTONE'
Ⓑ	PRECAST CONCRETE - PAINT FINISH TO MATCH DULUX 'CB SHALE GREY'
Ⓒ	PRE-FINISHED PANELISED CLADDING SYSTEM COLOURS TO MATCH DULUX 'VIVID WHITE'
Ⓓ	PRE-FINISHED PANELISED CLADDING SYSTEM COLOURS TO MATCH DULUX 'CB IRONSTONE'
Ⓔ	PRE-FINISHED PANELISED LIGHT WEIGHT CLADDING FINISHES TO SIMULATE TIMBER FINISHES
Ⓕ	ALUMINIUM FEATURE SUN-SHADING. POWDERCOATED FINISH COLOUR TO MATCH 'CITI SILVER PEARL'
Ⓖ	POWDERCOATED ALUMINIUM FRAMED GLAZING TO COMPLY WITH NCC SECTION J
Ⓗ	HORIZONTAL FEATURE SLAT SCREEN ON PAINTED COMPRESSED FIBRE CEMENT CLAD WALL - COLOUR TO MATCH 'KNOTWOOD'
Ⓘ	HORIZONTAL SLAT SCREEN FENCING TO OUTDOOR AREA - COLOUR TO MATCH 'KNOTWOOD'
Ⓚ	PERFORATED ALUMINIUM PANEL SCREENING. POWDER COATED FINISH TO MATCH 'ZEUS GREY & ZEUS MONUMENT'
Ⓛ	PROPRIETARY HORIZONTAL/VERTICAL LOUVER SUNSHADING. PRE-FINISHED TO SIMULATE TIMBER FINISH

30/04/2024 3:48:29 PM BIM 360://327-335 Burley Road_CAD_V3_Burley Road



PROJECT MANAGER

PROJECT ESR HORSLEY LOGISTIC PARK
 ADDRESS 327-335 BURLEY ROAD HORSLEY PARK NSW
 PROJECT NUMBER 200226

Rev	Description	Date
A	DA Issue	30.03.20
B	Development Application Issue	22.06.20
P1	Draft SIDA Issue	15.02.21
P2	SIDA modifications	30.04.21

HL Architects Pty Ltd. This drawing is confidential and is subject to copyright. It may not be copied, used, reproduced or transmitted in any way or in any form without the express permission of HL Architects Pty Ltd.
 General Notes:
 Architectural drawings to be read in conjunction with all other consultants detailed drawings, specifications & reports.
 Do not scale this drawing. Verify all dimensions on site.
 Refer all discrepancies to HLA before commencing any work.

HL Architects Pty Ltd A.C.N. 161 638 320
 nominated architect: Koi Hong LAM
 (Reg No. NSW #1555; QLD #6020; TAS #1101)
 e admin@hlarchitects.com.au
 t 02 9166 9942
 m 0424 160 365
 www.hlarchitects.com.au
 Suite S3, 9 George St, North Stratfield NSW 2137



DEVELOPMENT APPLICATION

DRAWING TITLE LOT 201 OFFICE 1 ELEVATIONS
 DRAWING NUMBER 200226 - DA - 201-A201
 DRWN AB
 CHK HL
 ISSUE 1
 P2



1 201 East Elevation (Main Office 2)
201-A111 1:100 @B1

2 201 North Elevation (Main Office 2)
201-A200 1:100 @B1

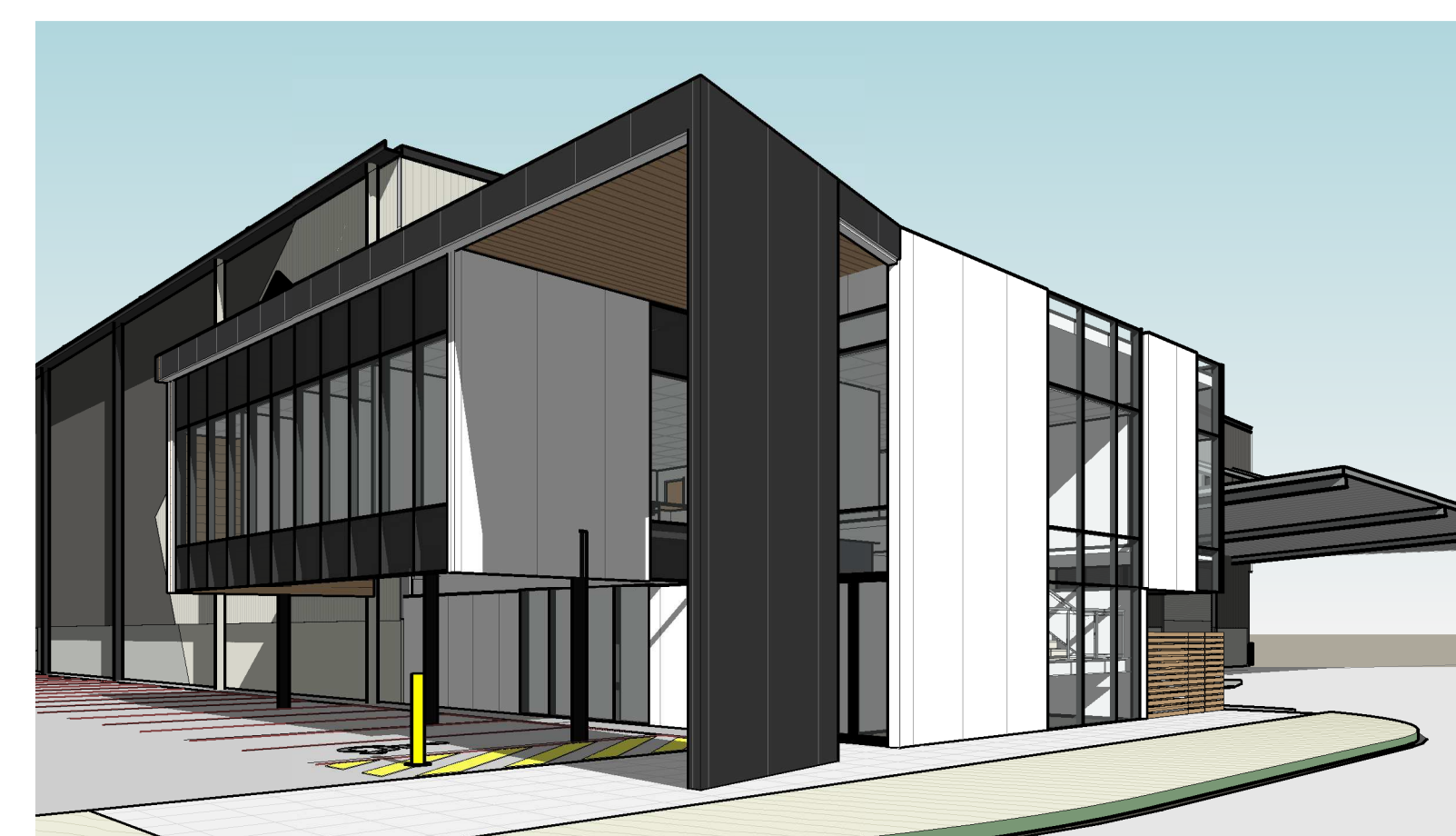
3 201 West Elevation (Main Office 2)
201-A111 1:100 @B1



4 201 3D View 1 (Office 2 - Entry)
@B1



5 201 3D View 2 (Office 2)
@B1



6 201 Office 3
@B1



7 201 Office 3 (2)
@B1



8 201 West Elevation (Main Office 3)
201-A200 1:100 @B1

9 201 North Elevation (Main Office 3)
201-A200 1:100 @B1

10 201 South Elevation (Main Office 3)
201-A111 1:100 @B1

OFFICE EXTERNAL FINISHES	
(A)	PRECAST CONCRETE - PAINT FINISH TO MATCH DULUX 'CB IRONSTONE'
(B)	PRECAST CONCRETE - PAINT FINISH TO MATCH DULUX 'CB SHALE GREY'
(C)	PRE-FINISHED PANELISED CLADDING SYSTEM COLOURS TO MATCH DULUX 'VIVID WHITE'
(D)	PRE-FINISHED PANELISED CLADDING SYSTEM COLOURS TO MATCH DULUX 'CB IRONSTONE'
(E)	PRE-FINISHED PANELISED LIGHT WEIGHT CLADDING FINISHES TO SIMULATE TIMBER FINISHES
(F)	ALUMINUM FEATURE SLAT SCREENING POWDERCOATED FINISH COLOUR TO MATCH 'CITI SILVER PEARL'
(G)	POWDERCOATED ALUMINUM FRAMED GLAZING TO COMPLY WITH NCC SECTION J
(H)	HORIZONTAL FEATURE SLAT SCREEN ON PAINTED COMPRESSED FIRE CEMENT CLAD WALL - COLOUR TO MATCH 'KNOTWOOD'
(I)	HORIZONTAL SLAT SCREEN FENCING TO OUTDOOR AREA - COLOUR TO MATCH 'KNOTWOOD'
(J)	PERFORATED ALUMINUM PANEL SCREENING POWDER COATED FINISH TO MATCH 'ZEUS GREY & ZEUS MONUMENT'
(K)	PROPRIETARY HORIZONTAL/VERTICAL LOUVRE SUNSHADING - PRE-FINISHED TO SIMULATE TIMBER FINISH

30/04/2024 1:36:45 PM BIM 360://271335/Burley_Road_CAD_V3/Burley_Road.dwg



PROJECT MANAGER

PROJECT ESR HORSLEY LOGISTIC PARK
ADDRESS 327-335 BURLEY ROAD HORSLEY PARK NSW
PROJECT NUMBER 200226

Rev	Description	Date
P1	Draft SSDA issue.	15.02.21
P2	Office 2A & 2B elevations updated, GFA updated. Minor updates to development table.	01.04.21
P3	SSDA modifications.	30.04.21

General Notes:
Architectural drawings to be read in conjunction with all other consultants detailed drawings, specifications & reports.
Do not scale this drawing. Verify all dimensions on site.
Refer all discrepancies to HLA before commencing any work.

H/L Architects Pty Ltd. This drawing is confidential and is subject to copyright. It may not be copied, used, reproduced or transmitted in any way or in any form without the express permission of H/L Architects Pty Ltd.

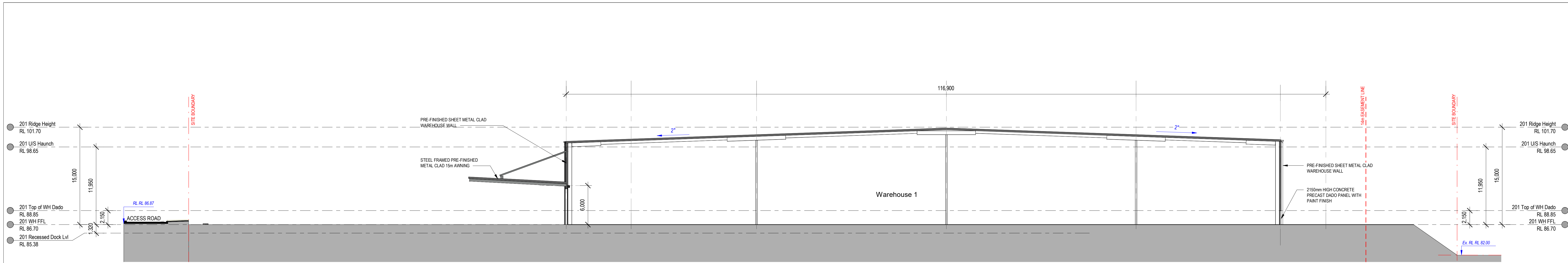
H/L Architects Pty Ltd A.C.N. 161 638 320
nominated architect: Koa Hoang (AU)
@Reg No. NSW #1559, QLD #6020, TAS #11011
e admin@hlarchitects.com.au
t 02 9166 9942
m 0424 160 365
w www.hlarchitects.com.au
a Suite 51, 9 George St, North Strathfield NSW 2137



DEVELOPMENT APPLICATION

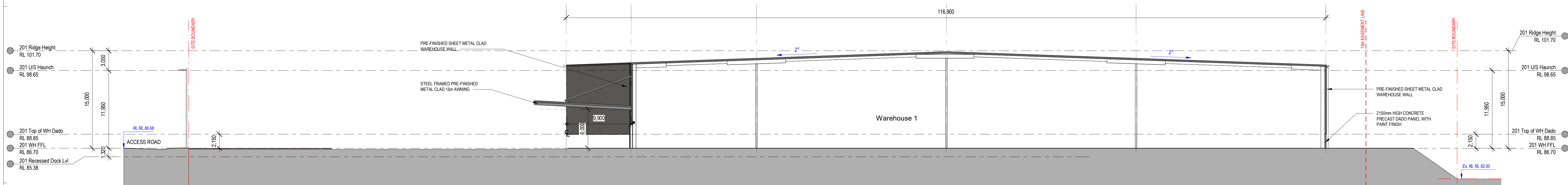
DRAWING TITLE LOT 201 OFFICE 2 & 3 ELEVATIONS
DRAWING NUMBER 200226 - DA - 201-A202
ISSUE P3

DRWN Author
CHK
CHECKER
ISSUE



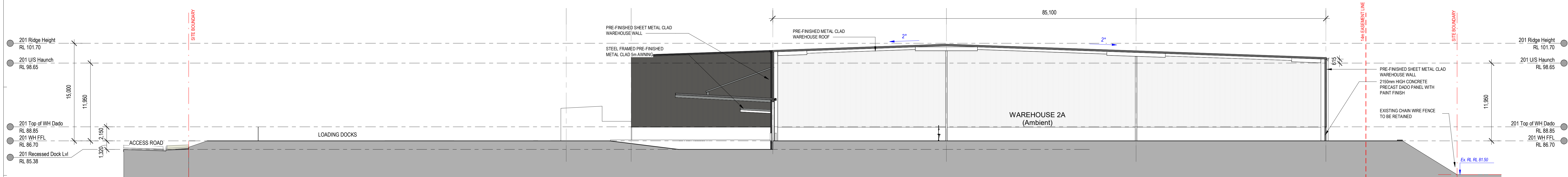
3 Lot 201 Cross Section (WH-1 - Flush Dock)

201-A200 1:250 @B1



1 Lot 201 Cross Section (WH-1)

201-A200 1:250 @B1



2 Lot 201 Cross Section (WH-2 Recessed Dock)

201-A200 1:250 @B1

30/04/2024 1:50:10 PM BM 390.6277 335 Burley Road, V3 Burley Road



PROJECT NUMBER

PROJECT ESR HORSLEY LOGISTIC PARK
 ADDRESS 327-335 BURLEY ROAD
 HORSLEY PARK NSW
 PROJECT NUMBER 200226

Rev	Description	Date
P2	Warehouse 1 (Jalco) in Warehouse 2 (UPS) site and warehouse layout revised	08.02.21
P3	Masterplan updated. Provisional parking added to WH3. WH2 airlock layout revised. Lot 204 parking reduced.	09.02.21
P4	Draft SSSA issue	15.02.21
P5	Office 2A & 2B elevations updated. GFA updated. Minor updates to development table.	01.04.21
P6	RSD sizes updated. WH 1 Storage area added. WH 2A battery charge relocated. Truck egress updated. WH 1 Dock Office layout added. Fence note updated. DP colour to match wall behind. RSD and WH door colour updated	26.04.21

HL Architects Pty Ltd. This drawing is confidential and is subject to copyright. It may not be copied, used, reproduced or transmitted in any way or in any form without the express permission of HL Architects Pty Ltd.

General Notes:
 Architectural drawings to be read in conjunction with all other consultants detailed drawings, specifications & reports.
 Do not scale this drawing. Verify all dimensions on site.
 Refer all discrepancies to HLA before commencing any work.

HL Architects Pty Ltd A.C.N. 161 638 320
 nominated architect: KOK HONG LAM
 (Reg No. NSW #1559, QLD #6020, TAS #1101)

admin@hlarchitects.com.au
 t 02 9166 9942
 m 0424 160 365
 www.hlarchitects.com.au
 Suite S3, 9 George St, North Strathfield NSW 2137



DEVELOPMENT APPLICATION

DRAWING TITLE LOT 201 WAREHOUSE SECTIONS
 DRAWING NUMBER 200226 - DA - 201-A210
 ISSUE P6



ESTATE CONCEPT MASTERPLAN AERIAL VIEW 1



LOT 201 ARTIST IMPRESSION



ESTATE CONCEPT MASTERPLAN AERIAL VIEW 2

30/04/2021 1:50:27 PM BIM: 30013271335_Burley_Road_CV3_Burley_Road



PROJECT MANAGER

PROJECT ESR HORSLEY LOGISTIC PARK
 ADDRESS 327-335 BURLEY ROAD
 HORSLEY PARK NSW
 PROJECT NUMBER 200226

Rev	Description	Date
A	DA Issue	30.03.20
B	Development Application Issue	22.06.20
C	Development Application Issue	20.10.20
P1	Office 2A & 2B elevations updated, GFA updated. Minor updates to development table.	01.04.21

GHJ Architects Pty Ltd. This drawing is confidential and is subject to copyright. It may not be copied, used, reproduced or transmitted in any way or in any form without the express permission of GHJ Architects Pty Ltd.
 General Notes:
 Architectural drawings to be read in conjunction with all other consultants detailed drawings, specifications & reports.
 Do not scale this drawing. Verify all dimensions on site.
 Refer all discrepancies to HLA before commencing any work.

HL Architects Pty Ltd A.C.N. 161 638 320
 nominated architect: Koi Hong LAU
 (Reg No. NSW #1559, QLD #6003, TAS #1101)
 e admin@hlarchitects.com.au
 t 02 9166 9942
 m 0424 160 365
 www.hlarchitects.com.au
 Suite 51, 9 George St, North Strathfield NSW 2137



DEVELOPMENT APPLICATION

DRAWING TITLE LOT 201 ARTIST IMPRESSIONS
 DRAWING NUMBER 200226 - DA - 201-A500

DRWN
 CHK
 HL
 ISSUE
 P1