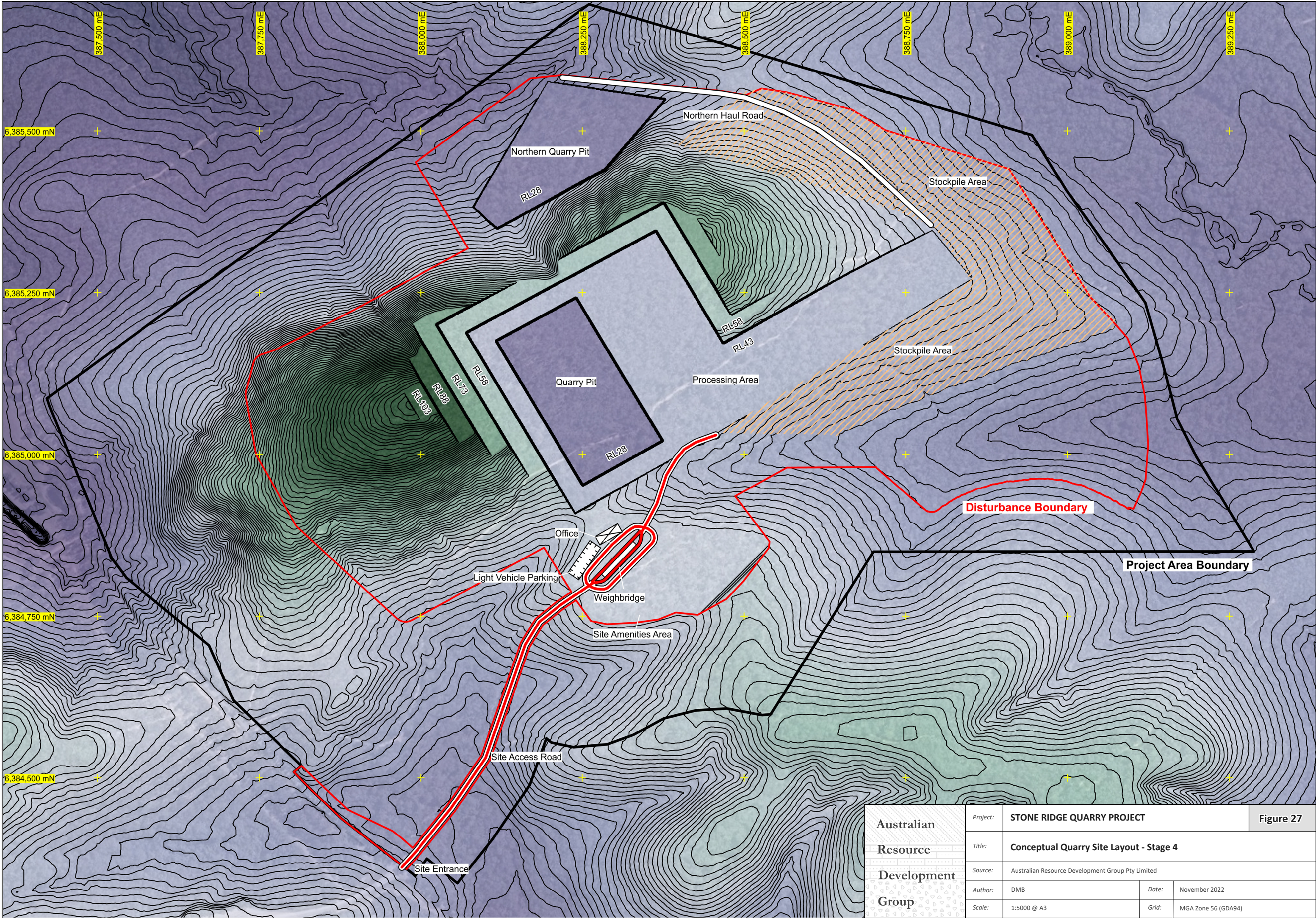
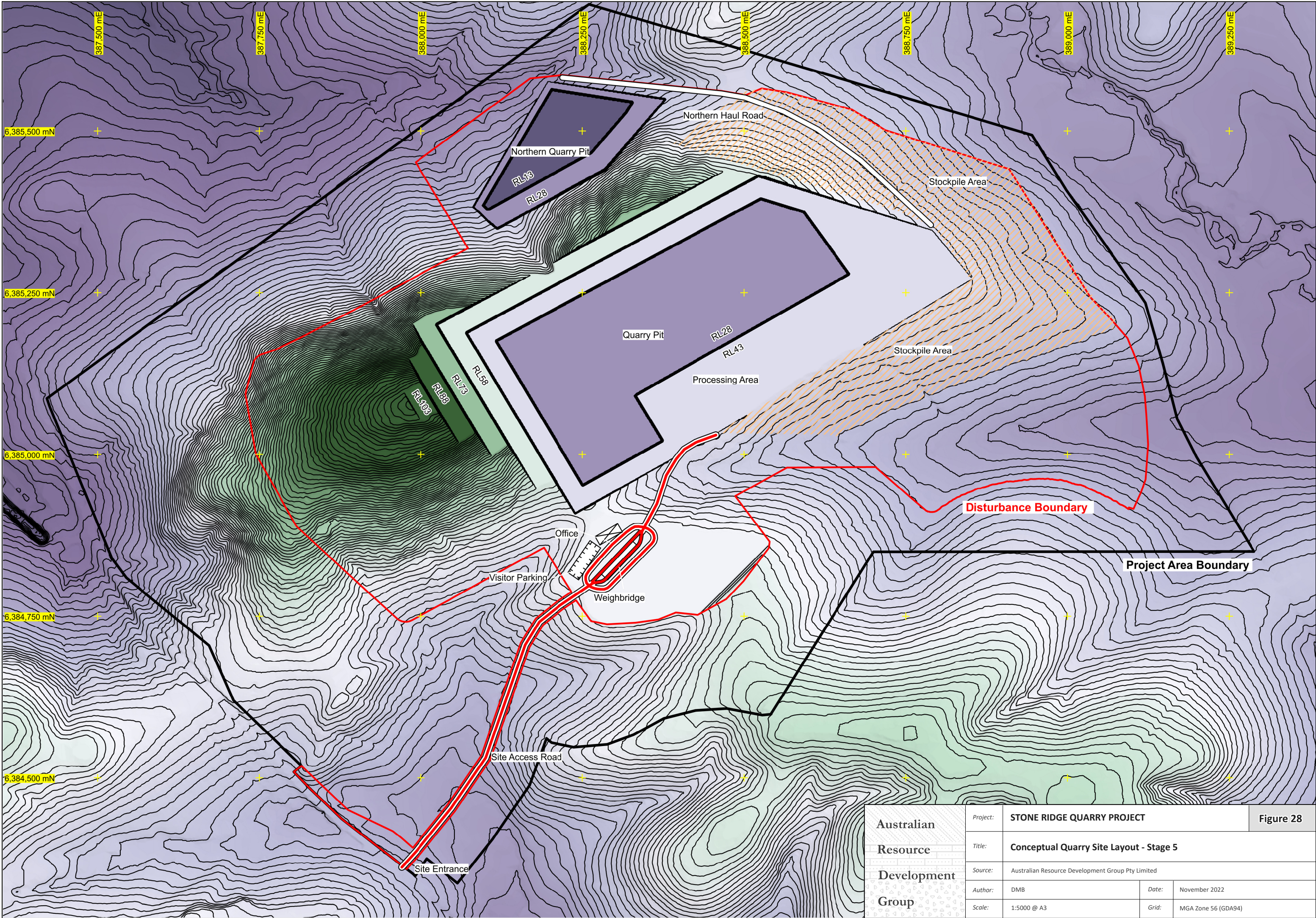


## APPENDIX 4

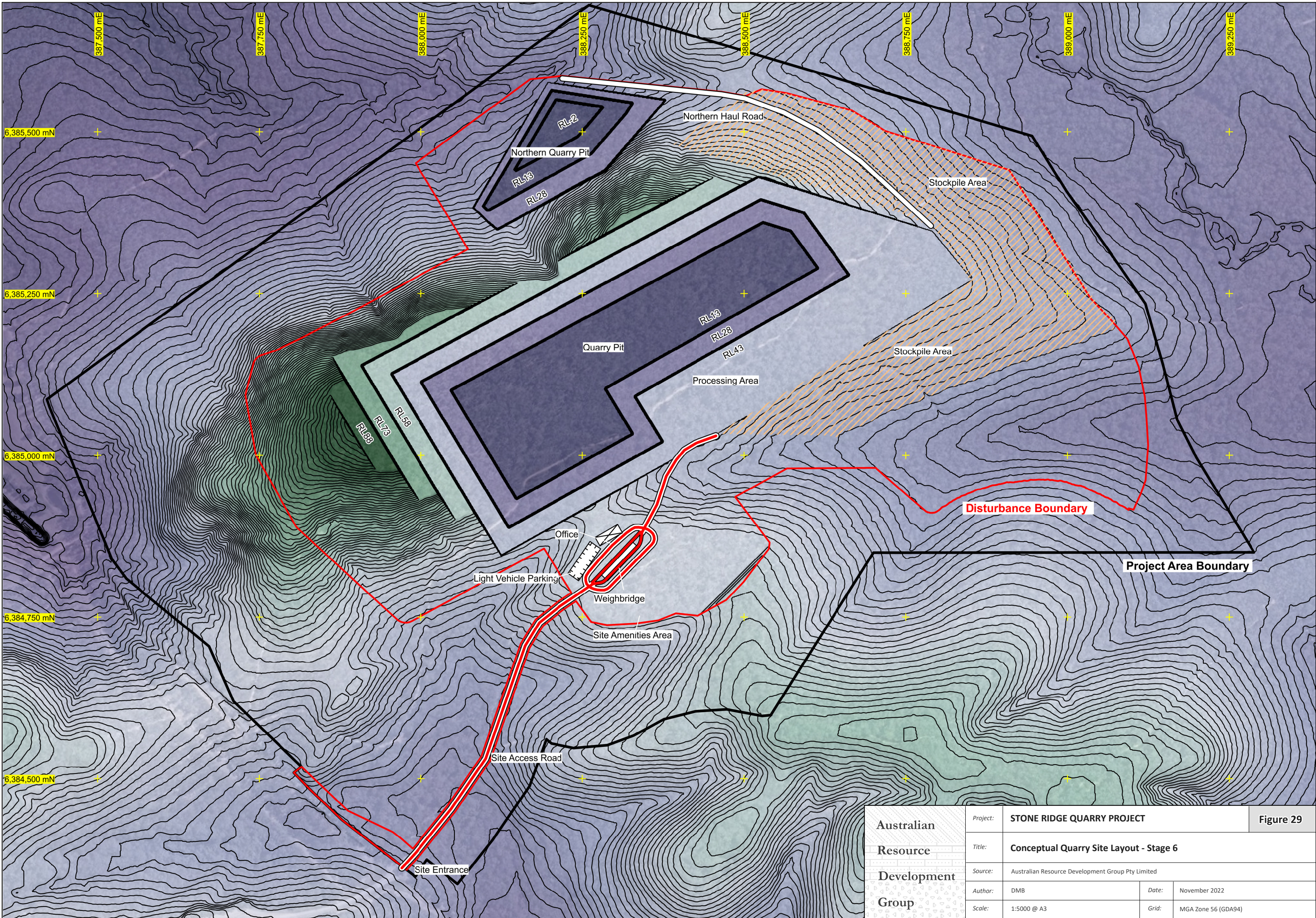
### Report on Quarry Resource Assessment Investigations



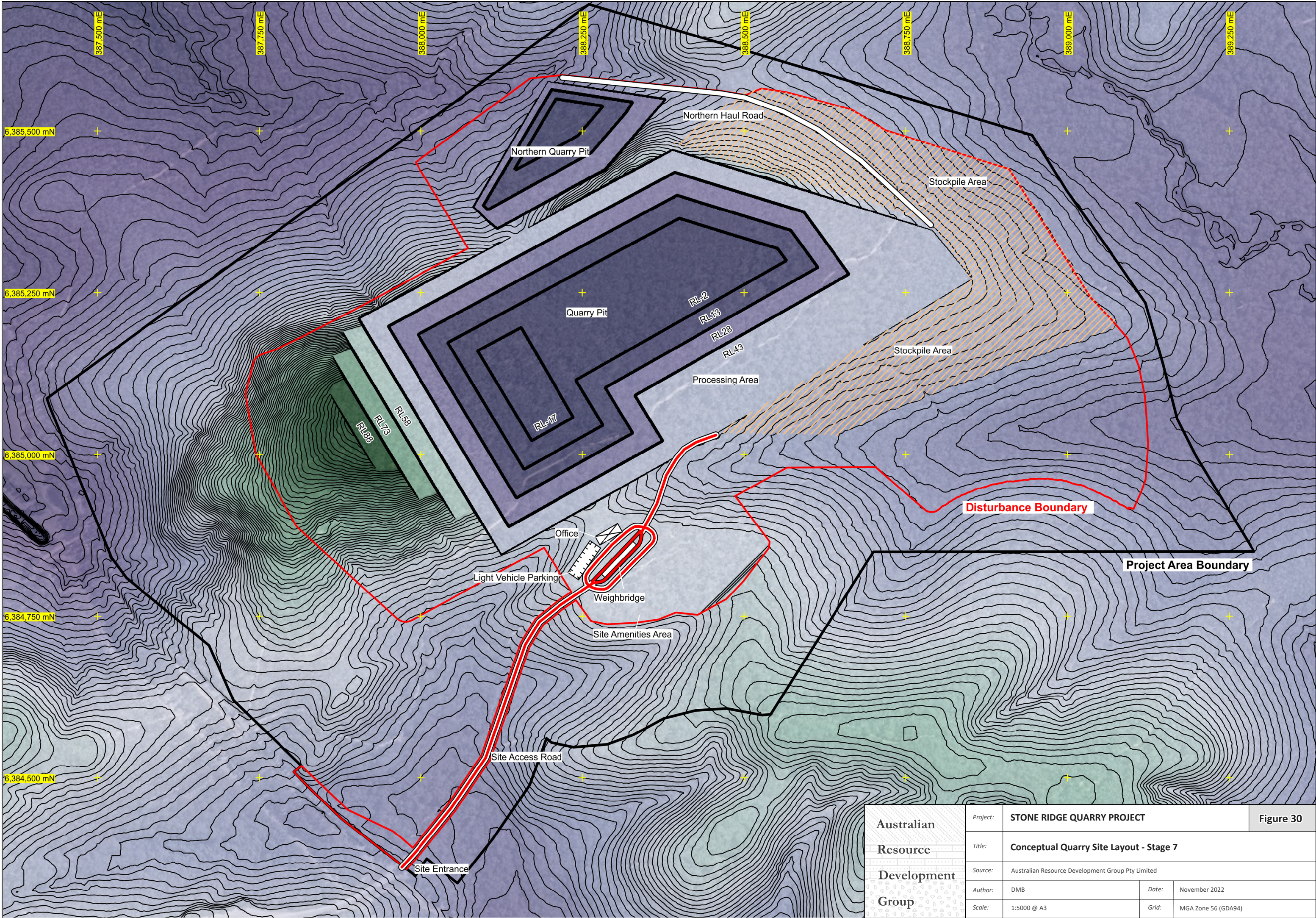
<b>Australian Resource Development Group</b>	Project:	<b>STONE RIDGE QUARRY PROJECT</b>		Figure 27
	Title:	<b>Conceptual Quarry Site Layout - Stage 4</b>		
	Source:	Australian Resource Development Group Pty Limited		
	Author:	DMB	Date:	November 2022
	Scale:	1:5000 @ A3	Grid:	MGA Zone 56 (GDA94)



<b>Australian Resource Development Group</b>	Project:	<b>STONE RIDGE QUARRY PROJECT</b>		Figure 28
	Title:	<b>Conceptual Quarry Site Layout - Stage 5</b>		
	Source:	Australian Resource Development Group Pty Limited		
	Author:	DMB	Date:	November 2022
	Scale:	1:5000 @ A3	Grid:	MGA Zone 56 (GDA94)



<b>Australian Resource Development Group</b>	Project:	<b>STONE RIDGE QUARRY PROJECT</b>		Figure 29
	Title:	<b>Conceptual Quarry Site Layout - Stage 6</b>		
	Source:	Australian Resource Development Group Pty Limited		
	Author:	DMB	Date:	November 2022
	Scale:	1:5000 @ A3	Grid:	MGA Zone 56 (GDA94)



<b>Australian Resource Development Group</b>	Project:	<b>STONE RIDGE QUARRY PROJECT</b>		Figure 30
	Title:	<b>Conceptual Quarry Site Layout - Stage 7</b>		
	Source:	Australian Resource Development Group Pty Limited		
	Author:	DMB	Date:	November 2022
	Scale:	1:5000 @ A3	Grid:	MGA Zone 56 (GDA94)