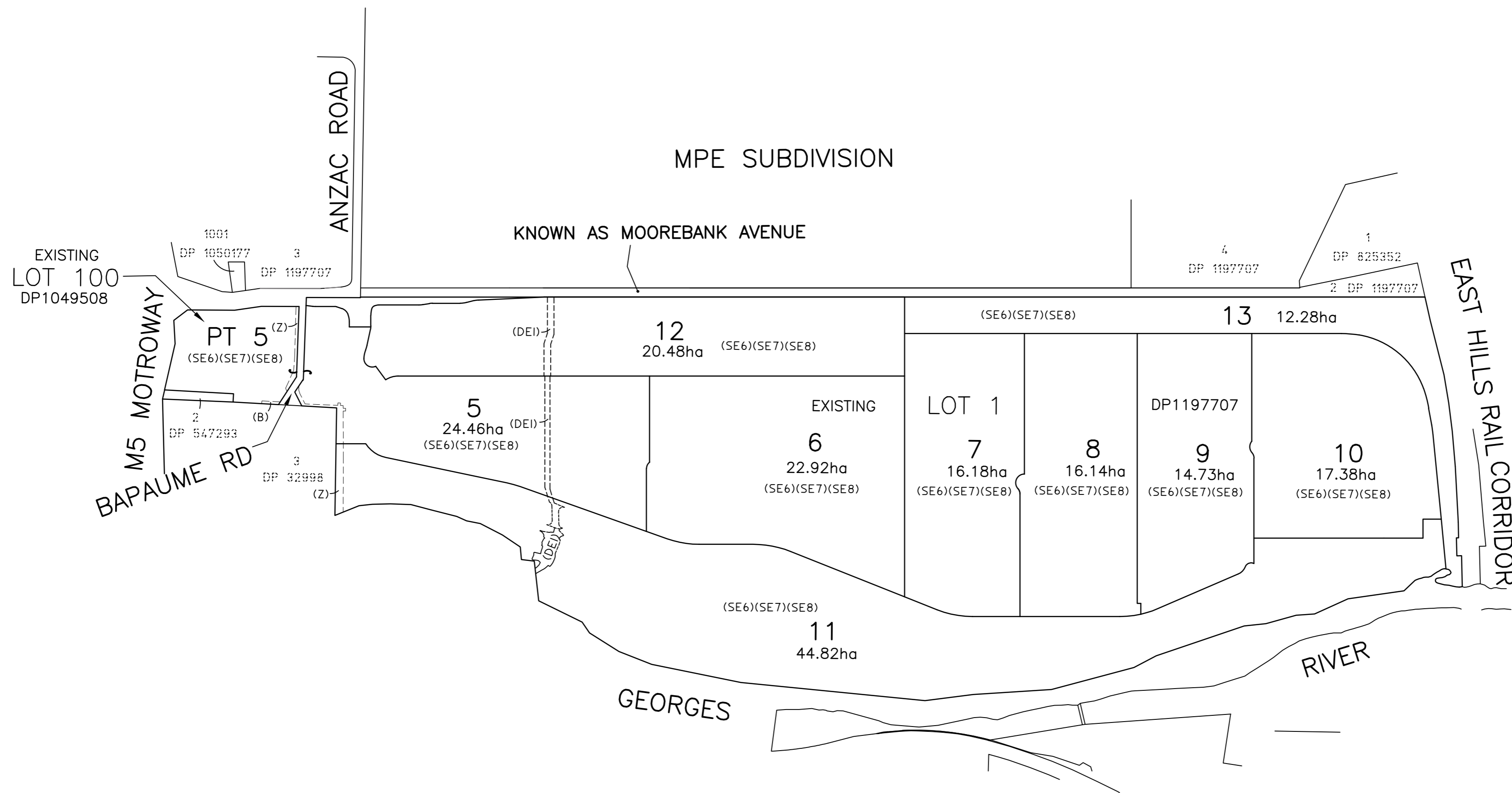


Attachment A – Updated Subdivision Plan (LandPartners; SYD073909.013.2.1, dated 1 July 2020)

# STAGED PLAN OF PROPOSED SUBDIVISION OF LOT 1 DP1197707 AND LOT 100 DP1049508

M.G.A. NORTH (ZONE 56)  
SCIMS



- (B) EASEMENT FOR DRAINAGE OF WATER 6 WIDE (DPI049508)
- (DEI) EASEMENT FOR DRAINAGE OF WATER
- (SE6) EASEMENT FOR SERVICES (WHOLE OF LOT)
- (SE7) EASEMENT FOR FUTURE SERVICES (WHOLE OF LOT)
- (SE8) EASEMENT FOR ACCESS (WHOLE OF LOT)
- (Z) EASEMENT FOR OVERHEAD POWERLINES VARIABLE WIDTH (DPII25932)

Date: 01/07/2020  
 Drawing Ref: SY073909.013.2.1

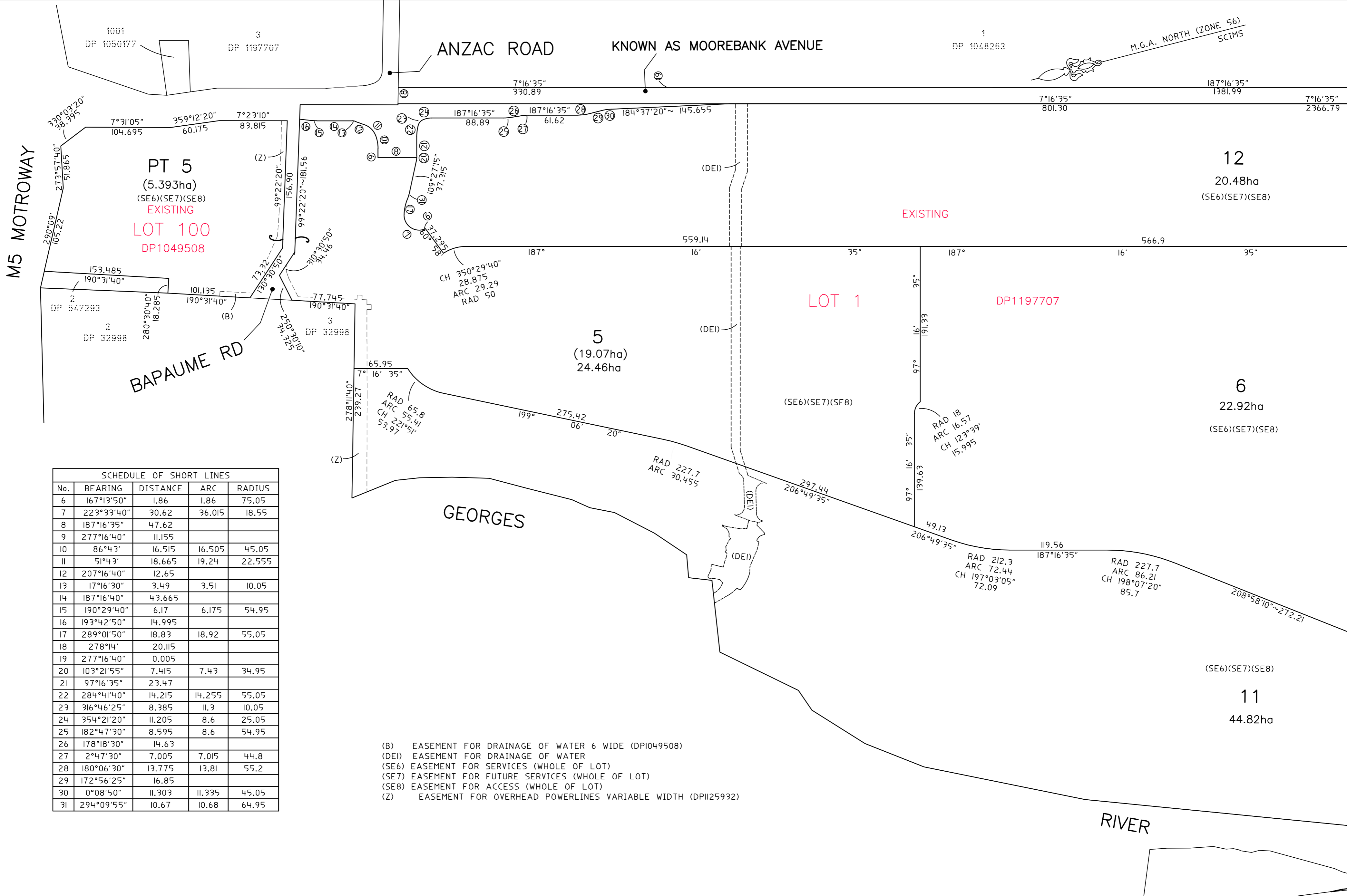
Surveyor: GREGORY K OXLEY  
 LandPartners PTY LTD  
 PO BOX 1144 DUNDAS 2117  
 Date: 01/07/2020  
 Surveyor's Ref: SY073909.013.2.1

PLAN OF SUBDIVISION OF LOT 1 IN DP1197707 AND LOT 100 DP1049508

LGA: LIVERPOOL  
 Locality: MOOREBANK  
 Subdivision No: XXX  
 Lengths are in metres. Reduction Ratio 1:7500

Registered

DP



**PT 5**  
(5.393ha)  
(SE6)(SE7)(SE8)  
**EXISTING**  
**LOT 100**  
DP1049508

**LOT 1**

DP1197707

**5**  
(19.07ha)  
24.46ha

**6**

22.92ha  
(SE6)(SE7)(SE8)

**11**

44.82ha

**12**

20.48ha  
(SE6)(SE7)(SE8)

SCHEDULE OF SHORT LINES				
No.	BEARING	DISTANCE	ARC	RADIUS
6	167°13'50"	1.86	1.86	75.05
7	223°33'40"	30.62	36.015	18.55
8	187°16'35"	47.62		
9	277°16'40"	11.155		
10	86°43'	16.515	16.505	45.05
11	51°43'	18.665	19.24	22.555
12	207°16'40"	12.65		
13	17°16'30"	3.49	3.51	10.05
14	187°16'40"	43.665		
15	190°29'40"	6.17	6.175	54.95
16	193°42'50"	14.995		
17	289°01'50"	18.83	18.92	55.05
18	278°14'	20.115		
19	277°16'40"	0.005		
20	103°21'55"	7.415	7.43	34.95
21	97°16'35"	23.47		
22	284°41'40"	14.215	14.255	55.05
23	316°46'25"	8.385	11.3	10.05
24	354°21'20"	11.205	8.6	25.05
25	182°47'30"	8.595	8.6	54.95
26	178°18'30"	14.63		
27	2°47'30"	7.005	7.015	44.8
28	180°06'30"	13.775	13.81	55.2
29	172°56'25"	16.85		
30	0°08'50"	11.303	11.335	45.05
31	294°09'55"	10.67	10.68	64.95

- (B) EASEMENT FOR DRAINAGE OF WATER 6 WIDE (DPI049508)
- (DE1) EASEMENT FOR DRAINAGE OF WATER
- (SE6) EASEMENT FOR SERVICES (WHOLE OF LOT)
- (SE7) EASEMENT FOR FUTURE SERVICES (WHOLE OF LOT)
- (SE8) EASEMENT FOR ACCESS (WHOLE OF LOT)
- (Z) EASEMENT FOR OVERHEAD POWERLINES VARIABLE WIDTH (DPI125932)

Date: 01/07/2020  
Drawing Ref: SY073909.013.2.1

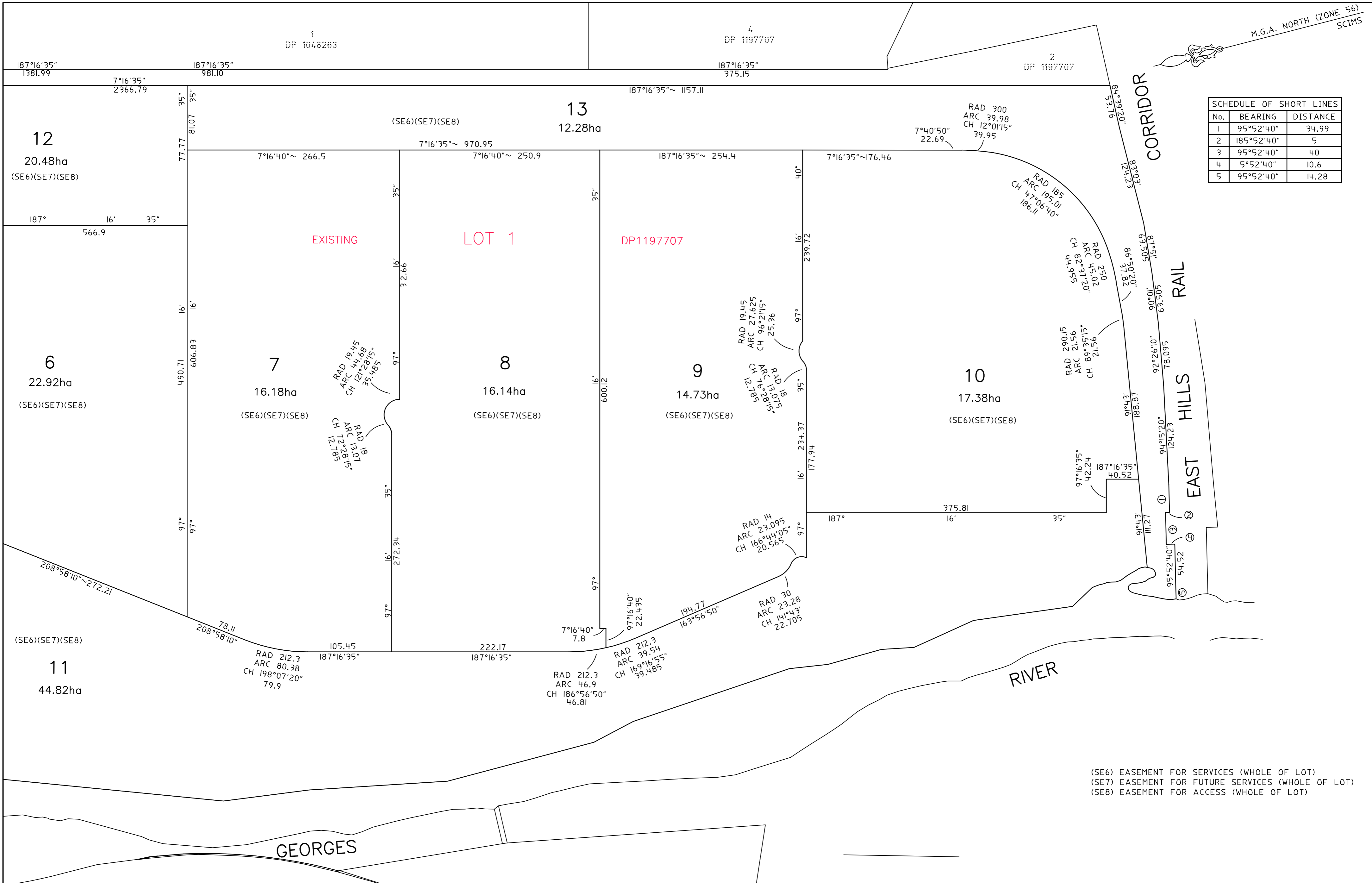
Surveyor: GREGORY K OXLEY  
LandPartners PTY LTD  
PO BOX 1144 DUNDAS 2117  
Date: 01/07/2020  
Surveyor's Ref: SY073909.013.2.1

PLAN OF SUBDIVISION OF LOT 1 IN DP1197707 AND  
LOT 100 DP1049508

LGA: LIVERPOOL  
Locality: MOOREBANK  
Subdivision No: XXX  
Lengths are in metres. Reduction Ratio 1:3000

Registered

DP



SCHEDULE OF SHORT LINES		
No.	BEARING	DISTANCE
1	95°52'40"	34.99
2	185°52'40"	5
3	95°52'40"	40
4	5°52'40"	10.6
5	95°52'40"	14.28

(SE6) EASEMENT FOR SERVICES (WHOLE OF LOT)  
 (SE7) EASEMENT FOR FUTURE SERVICES (WHOLE OF LOT)  
 (SE8) EASEMENT FOR ACCESS (WHOLE OF LOT)

Date: 01/07/2020  
 Drawing Ref: SY073909.013.2.1

Surveyor: GREGORY K OXLEY  
 LandPartners PTY LTD  
 PO BOX 1144 DUNDAS 2117  
 Date: 01/07/2020  
 Surveyor's Ref: SY073909.013.2.1

PLAN OF SUBDIVISION OF LOT 1 IN DP1197707 AND  
 LOT 100 DP1049508

LGA: LIVERPOOL  
 Locality: MOOREBANK  
 Subdivision No: XXX  
 Lengths are in metres. Reduction Ratio 1:3000

Registered

DP