



Figure 1468 – Crack propagation through footpath pavement



Figure 1469 – General Condition of footpath pavement



Figure 1470 – General Condition of footpath pavement



Figure 1471 – Crack propagation through footpath pavement



Figure 1472 – General Condition of footpath pavement



Figure 1473 – General Condition of road surface



Figure 1474 – General Condition of traffic island



Figure 1475 – Crack propagation through traffic island footpath pavement



Figure 1476 – General Condition of traffic island



Figure 1477 – General Condition of footpath pavement



Figure 1478 – General Condition of footpath pavement



Figure 1479 – Crack propagation through footpath pavement



Figure 1480 – General Condition of footpath pavement



Figure 1481 – General Condition of footpath pavement



Figure 1482 – General Condition of footpath pavement



Figure 1483 – Crack propagation through footpath pavement



Figure 1484 – General Condition of service pit



Figure 1485 – General Condition of footpath pavement



Figure 1486 – Crack propagation through footpath pavement



Figure 1487 – General Condition of footpath pavement



Figure 1488 – General Condition of service pit



Figure 1489 – Crack propagation through footpath pavement



Figure 1490 – General Condition of footpath pavement



Figure 1491 – General Condition of footpath pavement



Figure 1492 – General Condition of footpath pavement



Figure 1493 – General Condition of footpath pavement



Figure 1494 – General Condition of footpath pavement



Figure 1495 – General Condition of footpath pavement



Figure 1496 – General Condition of footpath pavement



Figure 1497 – General Condition of footpath pavement



Figure 1498 – General Condition of kerb and gutter



Figure 1499 – Crack propagation through kerb



Figure 1500 – General Condition of stormwater inlet pit



Figure 1501 – General Condition of kerb and gutter



Figure 1502 – General Condition of kerb and gutter



Figure 1503 – Crack propagation through kerb



Figure 1504 – General Condition of kerb and gutter



Figure 1505 – General Condition of kerb and gutter



Figure 1506 – Loss of material through kerb



Figure 1507 – General Condition of kerb and gutter



Figure 1508 – General Condition of kerb



Figure 1509 – Crack propagation through kerb



Figure 1510 – General Condition of kerb



Figure 1511 – Crack propagation through kerb



Figure 1512 – General Condition of stormwater inlet pit



Figure 1513 – General Condition of layback



Figure 1514 – Crack propagation through layback



Figure 1515 – Crack propagation through layback



Figure 1516 – General Condition of layback



Figure 1517 – General Condition of kerb



Figure 1518 – General Condition of kerb



Figure 1519 – General Condition of kerb



Figure 1520 – Crack propagation through layback



Figure 1521 – General Condition of layback



Figure 1522 – Crack propagation and loss of material through layback



Figure 1523 – Crack propagation through layback



Figure 1524 – Crack propagation through layback



Figure 1525 – General Condition of kerb



Figure 1526 – Crack propagation and loss of material through kerb



Figure 1527 – General Condition of kerb



Figure 1528 – General Condition of stormwater inlet pit



Figure 1529 – Loss of material through kerb



Figure 1530 – General Condition of kerb



Figure 1531 – General Condition of kerb



Figure 1532 – Crack propagation and loss of material through kerb



Figure 1533 – Crack propagation through kerb



Figure 1534 – General Condition of traffic island



Figure 1535 – Crack propagation through kerb



Figure 1536 – General Condition of kerb



Figure 1537 – Loss of material through kerb



Figure 1538 – General Condition of kerb



Figure 1539 – Loss of material through kerb



Figure 1540 – General Condition of stormwater inlet pit



Figure 1541 – General Condition of layback



Figure 1542 – General Condition of kerb



Figure 1543 – Crack propagation through kerb



Figure 1544 – General Condition of kerb



Figure 1545 – General Condition of kerb



Figure 1546 – Loss of material through kerb



Figure 1547 – Crack propagation through kerb



Figure 1548 – General Condition of kerb



Figure 1549 – General Condition of kerb



Figure 1550 – General Condition of kerb



Figure 1551 – Crack propagation through kerb



Figure 1552 – General Condition of layback



Figure 1553 – Crack propagation through kerb



Figure 1554 – General Condition of kerb



Figure 1555 – General Condition of kerb



Figure 1556 – General Condition of layback and gutter



Figure 1557 – General Condition of kerb and gutter



Figure 1558 – Crack propagation through kerb and gutter



Figure 1559 – General Condition of gutter



Figure 1560 – General Condition of kerb and gutter



Figure 1561 – Crack propagation through kerb and gutter



Figure 1562 – Loss of material through kerb



Figure 1563 – General Condition of stormwater inlet pit



Figure 1564 – General Condition of kerb and gutter



Figure 1565 – Evidence of patchwork through gutter



Figure 1566 – Loss of material through kerb



Figure 1567 – General Condition of kerb and gutter



Figure 1568 – General Condition of stormwater inlet pit

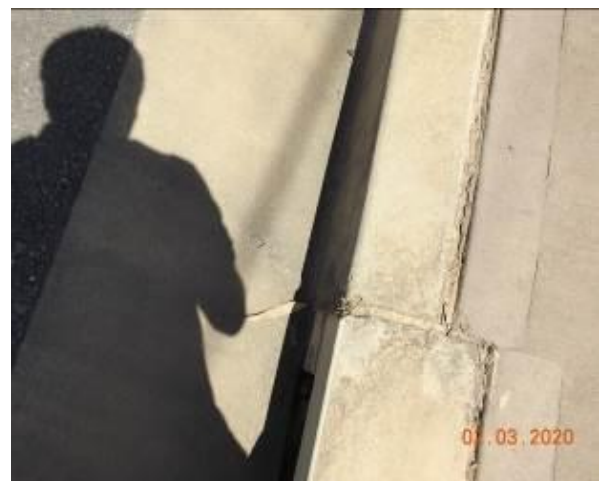


Figure 1569 – Crack propagation through stormwater inlet pit



Figure 1570 – General Condition of kerb and gutter



Figure 1571 – General Condition of kerb and gutter



Figure 1572 – General Condition of kerb and gutter



Figure 1573 – General Condition of stormwater inlet pit



Figure 1574 – Loss of material through stormwater inlet pit



Figure 1575 – Crack propagation through stormwater inlet pit



Figure 1576 – General Condition of kerb and gutter



Figure 1577 – General Condition of kerb and gutter



Figure 1578 – General Condition of kerb and gutter



Figure 1579 – Crack propagation through kerb and gutter



Figure 1580 – General Condition of kerb and gutter

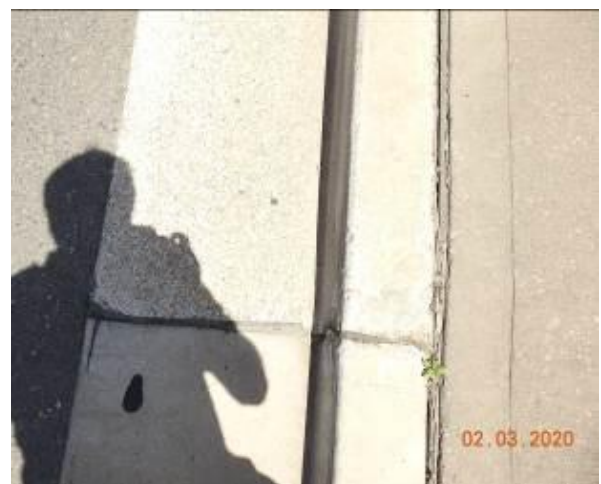


Figure 1581 – Crack propagation through kerb



Figure 1582 – General Condition of stormwater inlet pit



Figure 1583 – General Condition of kerb and gutter



Figure 1584 – Loss of material through gutter



Figure 1585 – General Condition of kerb and gutter



Figure 1586 – General Condition of kerb and gutter



Figure 1587 – General Condition of kerb and gutter



Figure 1588 – General Condition of kerb and gutter



Figure 1589 – Crack propagation and loss of material through kerb and gutter



Figure 1590 – General Condition of kerb and gutter



Figure 1591 – General Condition of stormwater inlet pit



Figure 1592 – General Condition of kerb and gutter

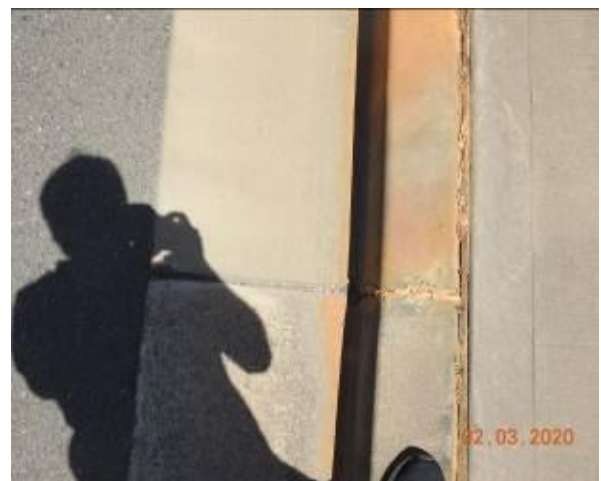


Figure 1593 – Crack propagation through kerb



Figure 1594 – Loss of material through gutter



Figure 1595 – General Condition of kerb and gutter



Figure 1596 – General Condition of kerb and gutter

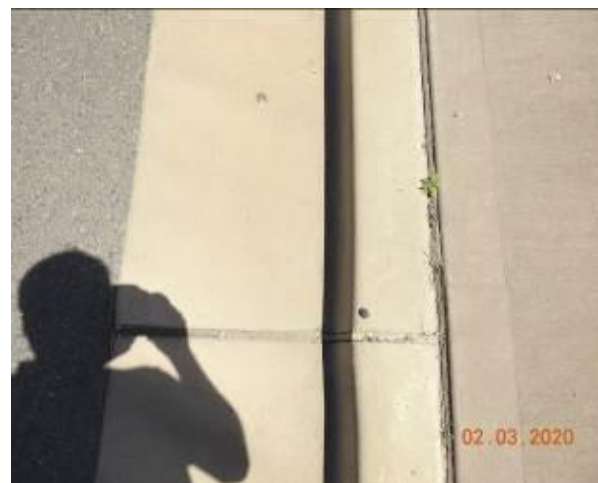


Figure 1597 – Crack propagation through kerb



Figure 1598 – General Condition of kerb



Figure 1599 – General Condition of stormwater inlet pit



Figure 1600 – Crack propagation through stormwater inlet pit



Figure 1601 – General Condition of kerb and gutter



Figure 1602 – General Condition of kerb and gutter



Figure 1603 – General Condition of kerb and gutter



Figure 1604 – Loss of material through kerb and gutter



Figure 1605 – General Condition of kerb and gutter



Figure 1606 – General Condition of kerb and gutter



Figure 1607 – Loss of material through kerb



Figure 1608 – General Condition of stormwater inlet pit



Figure 1609 – General Condition of kerb and gutter



Figure 1610 – Crack propagation and loss of material through kerb and gutter



Figure 1611 – General Condition of kerb and gutter



Figure 1612 – General Condition of kerb and gutter



Figure 1613 – General Condition of kerb and gutter



Figure 1614 – General Condition of kerb and gutter



Figure 1615 – Crack propagation through kerb and gutter



Figure 1616 – General Condition of kerb and gutter



Figure 1617 – General Condition of kerb and gutter



Figure 1618 – General Condition of stormwater inlet pit



Figure 1619 – General Condition of kerb and gutter



Figure 1620 – Loss of material through kerb



Figure 1621 – General Condition of kerb and gutter



Figure 1622 – General Condition of kerb and gutter



Figure 1623 – General Condition of kerb and gutter



Figure 1624 – Loss of material through kerb



Figure 1625 – Loss of material through layback



Figure 1626 – Crack propagation through kerb



Figure 1627 – General Condition of kerb and gutter



Figure 1628 – General Condition of stormwater inlet pit

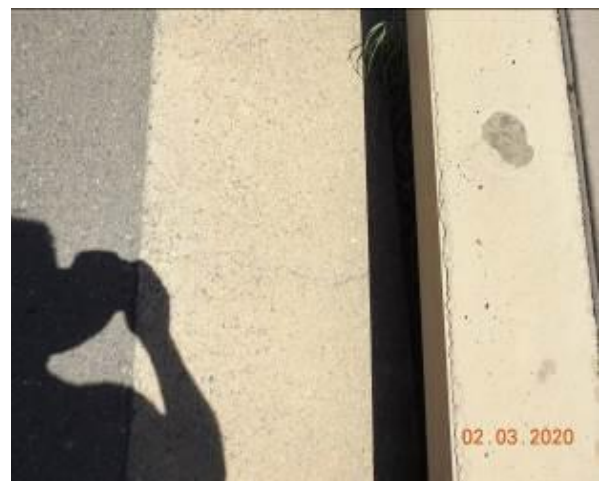


Figure 1629 – Crack propagation through stormwater inlet pit



Figure 1630 – General Condition of kerb and gutter



Figure 1631 – General Condition of kerb and gutter



Figure 1632 – General Condition of kerb and gutter



Figure 1633 – Crack propagation and loss of material through kerb and gutter



Figure 1634 – General Condition of layback and gutter



Figure 1635 – Loss of material through kerb



Figure 1636 – General Condition of kerb and gutter



Figure 1637 – General Condition of kerb and gutter



Figure 1638 – Crack propagation through kerb



Figure 1639 – Loss of material through kerb



Figure 1640 – General Condition of kerb and gutter



Figure 1641 – Loss of material through kerb and gutter



Figure 1642 – General Condition of stormwater inlet pit



Figure 1643 – Loss of material through kerb



Figure 1644 – General Condition of kerb and gutter



Figure 1645 – Loss of material through kerb



Figure 1646 – Crack propagation through layback and gutter



Figure 1647 – General Condition of kerb and gutter



Figure 1648 – General Condition of kerb and gutter



Figure 1649 – General Condition of kerb and gutter

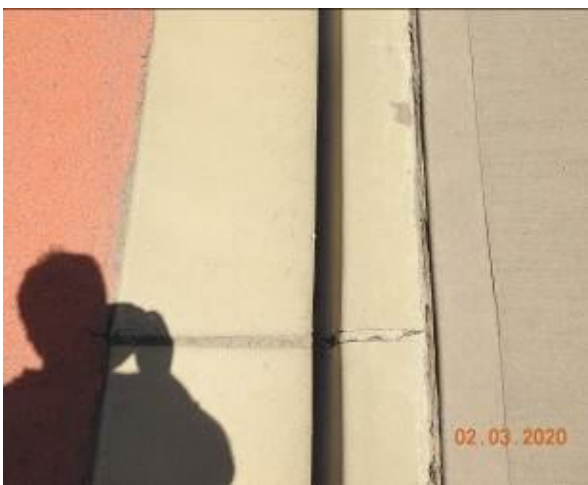


Figure 1650 – Crack propagation through kerb and gutter



Figure 1651 – General Condition of kerb and gutter



Figure 1652 – General Condition of kerb and gutter



Figure 1653 – General Condition of stormwater inlet pit



Figure 1654 – General Condition of kerb and gutter



Figure 1655 – Loss of material through kerb and gutter



Figure 1656 – General Condition of kerb and gutter



Figure 1657 – General Condition of kerb and gutter



Figure 1658 – Crack propagation and loss of material through kerb and gutter



Figure 1659 – General Condition of kerb and gutter



Figure 1660 – General Condition of kerb and gutter



Figure 1661 – Crack propagation and loss of material through kerb and gutter



Figure 1662 – General Condition of kerb and gutter



Figure 1663 – General Condition of kerb and gutter



Figure 1664 – Loss of material through kerb



Figure 1665 – General Condition of kerb and gutter



Figure 1666 – General Condition of stormwater inlet pit



Figure 1667 – Crack propagation through stormwater inlet pit



Figure 1668 – General Condition of kerb and gutter



Figure 1669 – Loss of material through kerb



Figure 1670 – General Condition of kerb and gutter



Figure 1671 – General Condition of kerb and gutter



Figure 1672 – General Condition of kerb and gutter



Figure 1673 – Crack propagation and loss of material through kerb and gutter



Figure 1674 – General Condition of kerb and gutter



Figure 1675 – General Condition of kerb and gutter



Figure 1676 – Crack propagation and loss of material through kerb and gutter



Figure 1677 – Loss of material through kerb



Figure 1678 – General Condition of kerb and gutter



Figure 1679 – General Condition of kerb and gutter



Figure 1680 – General Condition of stormwater inlet pit



Figure 1681 – General Condition of kerb and gutter



Figure 1682 – Crack propagation and loss of material through kerb and gutter



Figure 1683 – General Condition of kerb and gutter



Figure 1684 – General Condition of kerb and gutter



Figure 1685 – Loss of material through gutter



Figure 1686 – Loss of material through kerb and gutter



Figure 1687 – Loss of material through layback



Figure 1688 – General Condition of layback and gutter



Figure 1689 – General Condition of kerb and gutter



Figure 1690 – Crack propagation and loss of material through kerb



Figure 1691 – General Condition of kerb and gutter



Figure 1692 – General Condition of kerb and gutter



Figure 1693 – Crack propagation and loss of material through gutter



Figure 1694 – General Condition of stormwater inlet pit



Figure 1695 – Loss of material through kerb and gutter



Figure 1696 – General Condition of kerb and gutter



Figure 1697 – General Condition of layback and gutter



Figure 1698 – Loss of material through kerb



Figure 1699 – Loss of material through layback



Figure 1700 – General Condition of layback and gutter



Figure 1701 – Crack propagation through kerb and gutter



Figure 1702 – General Condition of kerb and gutter



Figure 1703 – General Condition of road surface



Figure 1704 – General Condition of road surface



Figure 1705 – General Condition of road surface



Figure 1706 – General Condition of road surface



Figure 1707 – General Condition of road surface



Figure 1708 – General Condition of road surface



Figure 1709 – General Condition of road surface



Figure 1710 – General Condition of road surface



Figure 1711 – Crack propagation through road surface



Figure 1712 – General Condition of road surface



Figure 1713 – Crack propagation through road surface



Figure 1714 – General Condition of road surface



Figure 1715 – General Condition of road surface



Figure 1716 – General Condition of road surface



Figure 1717 – Crack propagation through road surface



Figure 1718 – General Condition of road surface



Figure 1719 – General Condition of road surface



Figure 1720 – General Condition of road surface



Figure 1721 – General Condition of road surface



Figure 1722 – General Condition of road surface



Figure 1723 – General Condition of road surface



Figure 1724 – Crack propagation through road surface



Figure 1725 – General Condition of road surface



Figure 1726 – Crack propagation through road surface



Figure 1727 – General Condition of road surface



Figure 1728 – General Condition of road surface



Figure 1729 – General Condition of road surface



Figure 1730 – General Condition of road surface



Figure 1731 – General Condition of road surface



Figure 1732 – General Condition of road surface



Figure 1733 – General Condition of road surface



Figure 1734 – Crack propagation through road surface



Figure 1735 – General Condition of road surface



Figure 1736 – Crack propagation through road surface



Figure 1737 – General Condition of road surface



Figure 1738 – General Condition of road surface



Figure 1739 – General Condition of road surface



Figure 1740 – General Condition of road surface



Figure 1741 – General Condition of road surface



Figure 1742 – General Condition of road surface



Figure 1743 – General Condition of road surface



Figure 1744 – General Condition of road surface



Figure 1745 – General Condition of road surface



Figure 1746 – General Condition of road surface



Figure 1747 – General Condition of road surface



Figure 1748 – General Condition of road surface



Figure 1749 – General Condition of road surface



Figure 1750 – General Condition of road surface



Figure 1751 – General Condition of road surface



Figure 1752 – General Condition of road surface



Figure 1753 – General Condition of road surface



Figure 1754 – General Condition of road surface



Figure 1755 – General Condition of road surface



Figure 1756 – General Condition of road surface



Figure 1757 – General Condition of road surface



Figure 1758 – General Condition of road surface



Figure 1759 – General Condition of road surface



Figure 1760 – General Condition of road surface



Figure 1761 – General Condition of road surface



Figure 1762 – General Condition of road surface



Figure 1763 – General Condition of road surface



Figure 1764 – General Condition of road surface



Figure 1765 – General Condition of road surface



Figure 1766 – General Condition of road surface



Figure 1767 – General Condition of road surface



Figure 1768 – General Condition of road surface



Figure 1769 – General Condition of road surface



Figure 1770 – General Condition of road surface



Figure 1771 – General Condition of road surface



Figure 1772 – General Condition of road surface



Figure 1773 – General Condition of road surface



Figure 1774 – General Condition of road surface



Figure 1775 – General Condition of road surface



Figure 1776 – General Condition of road surface



Figure 1777 – General Condition of road surface



Figure 1778 – General Condition of road surface



Figure 1779 – General Condition of road surface



Figure 1780 – General Condition of road surface



Figure 1781 – General Condition of road surface



Figure 1782 – General Condition of road surface



Figure 1783 – General Condition of road surface



Figure 1784 – General Condition of road surface



Figure 1785 – General Condition of road surface



Figure 1786 – General Condition of road surface



Figure 1787 – General Condition of road surface



Figure 1788 – General Condition of road surface



Figure 1789 – General Condition of road surface



Figure 1790 – General Condition of road surface



Figure 1791 – General Condition of road surface



Figure 1792 – General Condition of road surface



Figure 1793 – General Condition of road surface



Figure 1794 – Evidence of patchwork through road surface



Figure 1795 – General Condition of road surface



Figure 1796 – General Condition of road surface



Figure 1797 – General Condition of road surface



Figure 1798 – General Condition of road surface



Figure 1799 – General Condition of road surface



Figure 1800 – General Condition of road surface



Figure 1801 – General Condition of road surface



Figure 1802 – General Condition of road surface



Figure 1803 – General Condition of road surface



Figure 1804 – General Condition of road surface



Figure 1805 – General Condition of road surface



Figure 1806 – General Condition of road surface



Figure 1807 – General Condition of road surface



Figure 1808 – General Condition of road surface



Figure 1809 – General Condition of road surface



Figure 1810 –General Condition of street sign



Figure 1811 – General Condition of traffic light



Figure 1812 – General Condition of lamp post
Identification No.835915



Figure 1813 – General Condition of lamp post



Figure 1814 – General Condition of traffic light



Figure 1815 – General Condition of lamp post
Identification No.835987



Figure 1816 – General Condition of lamp post



Figure 1817 – General Condition of street sign



Figure 1818 – General Condition of electricity box
Identification No.4474



Figure 1819 – General Condition of electricity box
Identification No.1552



Figure 1820 – General Condition of electricity box
Identification No.126945



Figure 1821 – General Condition of street sign



Figure 1822 – General Condition of lamp post
Identification No.835898



Figure 1823 – General Condition of lamp post



Figure 1824 – General Condition of telegraph pole
Identification No.213992/128



Figure 1825 – General Condition of telegraph pole



Figure 1826 – General Condition of street sign



Figure 1827 – General Condition of telegraph pole
Identification No.213994/130



Figure 1828 – General Condition of telegraph pole



Figure 1829 – General Condition of lamp post
Identification No.213994/130



Figure 1830 – General Condition of lamp post



Figure 1831 – General Condition of electricity box
Identification No.S118306



Figure 1832 – General Condition of street sign



Figure 1833 – General Condition of telegraph pole
Identification No.213993 / 129



Figure 1834 – General Condition of telegraph pole



Figure 1835 – General Condition of lamp post
Identification No.835900



Figure 1836 – General Condition of lamp post



Figure 1837 – General Condition of telegraph pole
Identification No.213991 / 127



Figure 1838 – General Condition of telegraph pole



Figure 1839 – General Condition of electricity box
Identification No.118307



Figure 1840 – General Condition of street sign



Figure 1841 – General Condition of lamp post
Identification No.835901



Figure 1842 – General Condition of lamp post



Figure 1843 – General Condition of telegraph pole
Identification No.213989 / 126



Figure 1844 – General Condition of telegraph pole



Figure 1845 – General Condition of lamp post
Identification No.835902



Figure 1846 – General Condition of lamp post



Figure 1847 – General Condition of street sign



Figure 1848 – General Condition of electricity box
Identification No.S118308



Figure 1849 – General Condition of telegraph pole
Identification No.213987 / 125



Figure 1850 – General Condition of telegraph pole



Figure 1851 – General Condition of street sign



Figure 1852 – General Condition of street sign



Figure 1853 – General Condition of lamp post
Identification No.835903



Figure 1854 – General Condition of lamp post



Figure 1855 – General Condition of street sign



Figure 1856 – General Condition of telegraph pole
Identification No.213955 / 124



Figure 1857 – General Condition of telegraph pole



Figure 1858 – General Condition of electricity box
Identification No.118309



Figure 1859 – General Condition of lamp post
Identification No.835904



Figure 1860 – General Condition of lamp post



Figure 1861 – General Condition of street sign



Figure 1862 – General Condition of telegraph pole
Identification No.213893 / 122



Figure 1863 – General Condition of telegraph pole



Figure 1864 – General Condition of telegraph pole
Identification No.213984 / 123



Figure 1865 – General Condition of street sign



Figure 1866 – General Condition of service pit



Figure 1867 – General Condition of service pit



Figure 1868 – General Condition of lamp post
Identification No.835905



Figure 1869 – General Condition of lamp post



Figure 1870 – General Condition of traffic light / street sign

Comments

The section of Schofields Road which is associated with the subject site was inspected and photographic evidence compiled in order to depict the condition of the council assets along this particular stretch of road prior to the commencement of any work at the subject site.

The road surface of Schofields Road at the time of the inspection was in a good condition with evidence of cracking and patchwork.

At the same time the kerb, gutter and footpath which accompany the road way were also inspected. At the time of this inspection they were found to be in a good condition. There was evidence of patchwork, crack propagation and material loss through the kerb, gutter and footpath.

The condition of the telegraph poles, lamp posts, electricity boxes, stormwater inlet pits, traffic island, street signs and service pits was also inspected and were determined to be in a reasonable condition. There was evidence of crack propagation and loss of material through stormwater inlet pit.

Refer to Appendix (D) for photographic records of the above.

Appendix E

Themeda Avenue Council Assets



❖ The map is taken from the Nearmaps website that holds copyright to this content.



Figure 1871 – General Condition of footpath pavement



Figure 1872 – General Condition of service pit



Figure 1873 – General Condition of service pit



Figure 1874 – General Condition of footpath pavement



Figure 1875 – General Condition of footpath pavement



Figure 1876 – General Condition of service pit



Figure 1877 – General Condition of footpath pavement



Figure 1878 – General Condition of footpath pavement



Figure 1879 – General Condition of footpath pavement



Figure 1880 – General Condition of park bench



Figure 1881 – General Condition of public park area

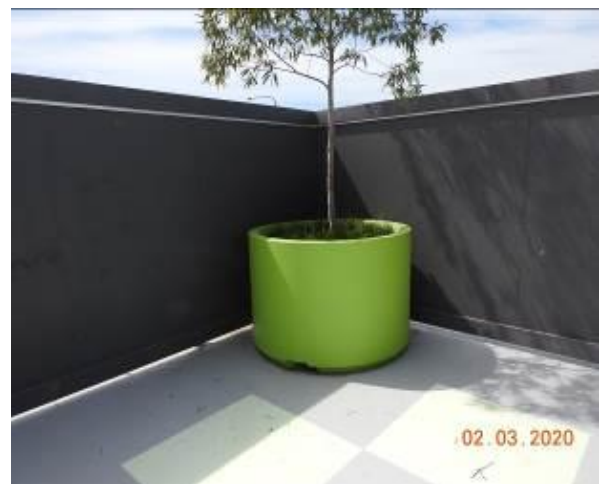


Figure 1882 – General Condition of plantation



Figure 1883 – General Condition of park grass area



Figure 1884 – General Condition of park plantation



Figure 1885 – General Condition of park plantation



Figure 1886 – General Condition of park plantation



Figure 1887 – General Condition of park public bench



Figure 1888 – General Condition of park bench



Figure 1889 – General Condition of footpath pavement



Figure 1890 – General Condition of footpath pavement



Figure 1891 – General Condition of footpath pavement



Figure 1892 – General Condition of footpath pavement



Figure 1893 – General Condition of footpath pavement



Figure 1894 – General Condition of footpath pavement



Figure 1895 – General Condition of footpath pavement



Figure 1896 – General Condition of footpath pavement



Figure 1897 – General Condition of footpath pavement



Figure 1898 – General Condition of footpath pavement



Figure 1899 – General Condition of footpath pavement



Figure 1900 – General Condition of footpath pavement



Figure 1901 – Loss of material through service pit



Figure 1902 – General Condition of footpath pavement



Figure 1903 – General Condition of footpath pavement



Figure 1904 – General Condition of service pit



Figure 1905 – General Condition of footpath pavement



Figure 1906 – General Condition of footpath pavement



Figure 1907 – General Condition of service pit



Figure 1908 – General Condition of service pit



Figure 1909 – General Condition of footpath pavement



Figure 1910 – General Condition of footpath pavement



Figure 1911 – General Condition of footpath pavement



Figure 1912 – General Condition of footpath pavement



Figure 1913 – General Condition of footpath pavement



Figure 1914 – General Condition of service pit



Figure 1915 – General Condition of service pit



Figure 1916 – General Condition of footpath pavement



Figure 1917 – General Condition of footpath pavement



Figure 1918 – General Condition of footpath pavement



Figure 1919 – General Condition of footpath pavement



Figure 1920 – Crack propagation through footpath pavement



Figure 1921 – General Condition of footpath pavement



Figure 1922 – General Condition of footpath pavement



Figure 1923 – General Condition of footpath pavement



Figure 1924 – Loss of material through service pit



Figure 1925 – Loss of material through service pit



Figure 1926 – General Condition of footpath pavement



Figure 1927 – General Condition of footpath pavement



Figure 1928 – General Condition of footpath pavement



Figure 1929 – Crack propagation through footpath pavement



Figure 1930 – General Condition of footpath pavement



Figure 1931 – Crack propagation and loss of material through footpath pavement



Figure 1932 – General Condition of footpath pavement



Figure 1933 – Crack propagation and loss of material through footpath pavement



Figure 1934 – Crack propagation through footpath pavement



Figure 1935 – General Condition of footpath pavement



Figure 1936 – General Condition of footpath pavement



Figure 1937 – General Condition of footpath pavement



Figure 1938 – Crack propagation through footpath pavement



Figure 1939 – General Condition of footpath pavement



Figure 1940 – Loss of material through footpath pavement



Figure 1941 – Crack propagation through footpath pavement



Figure 1942 – General Condition of footpath pavement



Figure 1943 – General Condition of footpath pavement



Figure 1944 – General Condition of public bench



Figure 1945 – General Condition of footpath pavement



Figure 1946 – General Condition of footpath pavement



Figure 1947 – General Condition of footpath pavement



Figure 1948 – General Condition of footpath pavement



Figure 1949 – General Condition of kerb and gutter



Figure 1950 – General Condition of kerb and gutter



Figure 1951 – Crack propagation through kerb and gutter



Figure 1952 – General Condition of kerb and gutter



Figure 1953 – Loss of material through gutter



Figure 1954 – General Condition of kerb and gutter



Figure 1955 – Crack propagation and loss of material through kerb and gutter



Figure 1956 – General Condition of kerb and gutter



Figure 1957 – General Condition of kerb and gutter



Figure 1958 – Crack propagation through gutter



Figure 1959 – General Condition of stormwater inlet pit



Figure 1960 – General Condition of kerb and gutter



Figure 1961 – General Condition of kerb and gutter



Figure 1962 – Evidence of patchwork through gutter



Figure 1963 – Loss of material through gutter



Figure 1964 – Loss of material through gutter



Figure 1965 – General Condition of kerb and gutter



Figure 1966 – Crack propagation and Evidence of patchwork through gutter



Figure 1967 – General Condition of kerb and gutter



Figure 1968 – Crack propagation and loss of material through kerb and gutter



Figure 1969 – General Condition of kerb and gutter



Figure 1970 – Crack propagation through kerb and gutter



Figure 1971 – Loss of material through gutter



Figure 1972 – Crack propagation and loss of material through kerb and gutter



Figure 1973 – General Condition of kerb and gutter



Figure 1974 – Crack propagation through kerb and gutter



Figure 1975 – Crack propagation through kerb and gutter



Figure 1976 – Crack propagation through kerb and gutter



Figure 1977 – General Condition of kerb and gutter



Figure 1978 – Crack propagation through kerb



Figure 1979 – Loss of material through kerb and gutter



Figure 1980 – Loss of material through kerb and gutter



Figure 1981 – General Condition of stormwater inlet pit



Figure 1982 – General Condition of kerb and gutter



Figure 1983 – Loss of material through kerb and gutter



Figure 1984 – Crack propagation through kerb



Figure 1985 – Crack propagation through kerb



Figure 1986 – General Condition of kerb and gutter



Figure 1987 – Crack propagation and loss of material through kerb



Figure 1988 – Crack propagation through kerb and gutter



Figure 1989 – Crack propagation through kerb and gutter



Figure 1990 – Loss of material through gutter



Figure 1991 – General Condition of kerb and gutter



Figure 1992 – Loss of material through gutter



Figure 1993 – General Condition of stormwater inlet pit



Figure 1994 – General Condition of kerb and gutter



Figure 1995 – Loss of material through kerb and gutter



Figure 1996 – General Condition of kerb and gutter



Figure 1997 – Loss of material through kerb and gutter



Figure 1998 – Crack propagation through kerb and gutter



Figure 1999 – General Condition of kerb and gutter



Figure 2000 – Crack propagation through kerb and gutter



Figure 2001 – Crack propagation through kerb and gutter



Figure 2002 – General Condition of kerb and gutter



Figure 2003 – Crack propagation through curb



Figure 2004 – Crack propagation through curb



Figure 2005 – General Condition of curb



Figure 2006 – Crack propagation through curb



Figure 2007 – General Condition of curb



Figure 2008 – Crack propagation through curb



Figure 2009 – Crack propagation through kerb



Figure 2010 – General Condition of kerb



Figure 2011 – Crack propagation through kerb



Figure 2012 – Loss of material through kerb

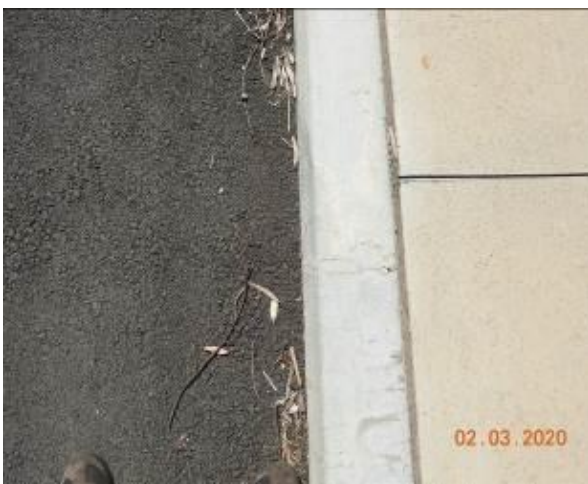


Figure 2013 – Crack propagation through kerb



Figure 2014 – Crack propagation through kerb



Figure 2015 – General Condition of kerb and gutter



Figure 2016 – General Condition of kerb



Figure 2017 – Crack propagation and loss of material through kerb



Figure 2018 – General Condition of kerb



Figure 2019 – Loss of material through kerb



Figure 2020 – Loss of material through kerb



Figure 2021 – General Condition of kerb



Figure 2022 – General Condition of stormwater inlet pit



Figure 2023 – General Condition of gutter



Figure 2024 – Crack propagation through kerb



Figure 2025 – Crack propagation through kerb



Figure 2026 – Crack propagation through kerb



Figure 2027 – General Condition of kerb



Figure 2028 – Crack propagation through kerb



Figure 2029 – Crack propagation through kerb



Figure 2030 – Loss of material through kerb



Figure 2031 – General Condition of kerb and gutter



Figure 2032 – Crack propagation through kerb



Figure 2033 – Crack propagation through kerb



Figure 2034 – Crack propagation through kerb



Figure 2035 – General Condition of kerb and gutter



Figure 2036 – Crack propagation and loss of material through kerb and gutter



Figure 2037 – General Condition of stormwater inlet pit



Figure 2038 – Crack propagation through stormwater inlet pit



Figure 2039 – Crack propagation through gutter



Figure 2040 – General Condition of layback and gutter



Figure 2041 – Crack propagation through layback and gutter



Figure 2042 – General Condition of layback and gutter



Figure 2043 – Evidence of patchwork through layback and gutter



Figure 2044 – Loss of material through gutter



Figure 2045 – General Condition of kerb and gutter



Figure 2046 – Loss of material through kerb and gutter



Figure 2047 – Crack propagation through kerb and gutter



Figure 2048 – Loss of material through kerb and gutter



Figure 2049 – General Condition of kerb and gutter



Figure 2050 – Crack propagation through kerb and gutter



Figure 2051 – Loss of material through gutter



Figure 2052 – General Condition of kerb and gutter



Figure 2053 – General Condition of stormwater inlet pit

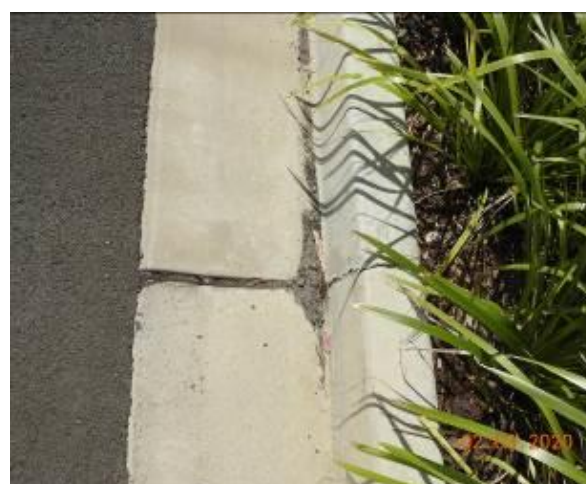


Figure 2054 – Crack propagation and loss of material through kerb and gutter



Figure 2055 – General Condition of kerb and gutter



Figure 2056 – Crack propagation through kerb and gutter



Figure 2057 – Crack propagation through kerb and gutter



Figure 2058 – Crack propagation through kerb and gutter



Figure 2059 – Crack propagation through kerb and gutter



Figure 2060 – General Condition of kerb



Figure 2061 – Crack propagation and Separation through kerb



Figure 2062 – General Condition of kerb



Figure 2063 – General Condition of gutter



Figure 2064 – General Condition of kerb



Figure 2065 – Crack propagation through kerb



Figure 2066 – Crack propagation through kerb



Figure 2067 – Crack propagation through kerb



Figure 2068 – General Condition of kerb



Figure 2069 – Crack propagation and loss of material through kerb



Figure 2070 – Crack propagation and loss of material through kerb



Figure 2071 – Loss of material through kerb



Figure 2072 – Crack propagation through kerb



Figure 2073 – Crack propagation through kerb



Figure 2074 – General Condition of kerb



Figure 2075 – Crack propagation through kerb



Figure 2076 – Crack propagation through kerb



Figure 2077 – Crack propagation through kerb



Figure 2078 – General Condition of kerb and gutter



Figure 2079 – General Condition of gutter



Figure 2080 – General Condition of kerb



Figure 2081 – Loss of material through kerb



Figure 2082 – Crack propagation through kerb



Figure 2083 – Separation through kerb



Figure 2084 – General Condition of kerb



Figure 2085 – Crack propagation through kerb



Figure 2086 – General Condition of kerb



Figure 2087 – Crack propagation and loss of material through kerb



Figure 2088 – Crack propagation through kerb



Figure 2089 – General Condition of kerb

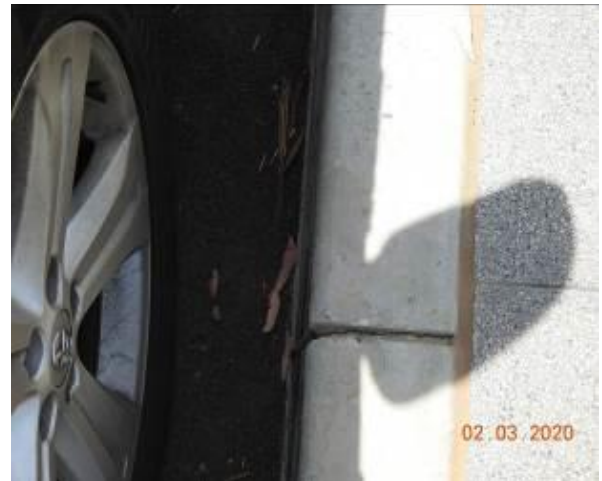


Figure 2090 – Crack propagation through kerb



Figure 2091 – Crack propagation through kerb



Figure 2092 – General Condition of kerb



Figure 2093 – General Condition of gutter



Figure 2094 – General Condition of stormwater inlet pit



Figure 2095 – General Condition of kerb and gutter



Figure 2096 – Crack propagation through kerb



Figure 2097 – Crack propagation through gutter



Figure 2098 – General Condition of gutter



Figure 2099 – General Condition of kerb



Figure 2100 – Separation through kerb



Figure 2101 – General Condition of kerb



Figure 2102 – Crack propagation through kerb



Figure 2103 – Crack propagation through kerb



Figure 2104 – Crack propagation through kerb



Figure 2105 – General Condition of kerb



Figure 2106 – Crack propagation through kerb



Figure 2107 – Crack propagation through kerb



Figure 2108 – Crack propagation through kerb



Figure 2109 – General Condition of gutter



Figure 2110 – General Condition of stormwater inlet pit



Figure 2111 – Crack propagation through kerb



Figure 2112 – Crack propagation through kerb



Figure 2113 – General Condition of kerb and gutter



Figure 2114 – Crack propagation through kerb



Figure 2115 – Crack propagation through kerb and gutter



Figure 2116 – Crack propagation through kerb and gutter



Figure 2117 – General Condition of kerb and gutter



Figure 2118 – Crack propagation through kerb and gutter



Figure 2119 – General Condition of kerb and gutter



Figure 2120 – General Condition of layback and gutter



Figure 2121 – Crack propagation through layback and gutter

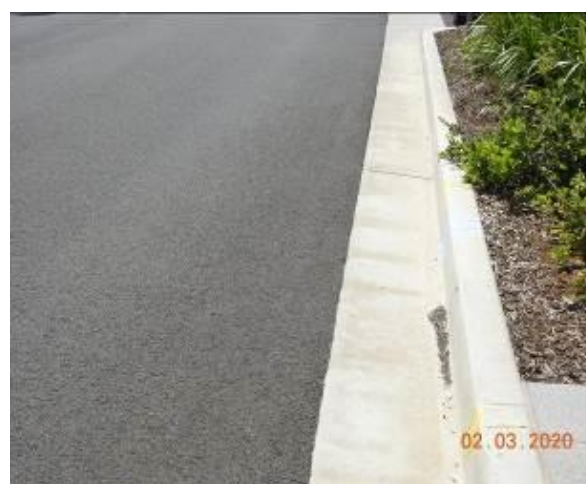


Figure 2122 – General Condition of kerb and gutter



Figure 2123 – Crack propagation through kerb and gutter



Figure 2124 – Crack propagation through kerb and gutter



Figure 2125 – General Condition of kerb and gutter



Figure 2126 – General Condition of kerb and gutter



Figure 2127 – General Condition of kerb



Figure 2128 – General Condition of kerb



Figure 2129 – Crack propagation through kerb



Figure 2130 – General Condition of kerb



Figure 2131 – General Condition of kerb



Figure 2132 – Crack propagation through kerb



Figure 2133 – General Condition of service pit



Figure 2134 – General Condition of stormwater inlet pit



Figure 2135 – General Condition of gutter



Figure 2136 – Crack propagation through kerb



Figure 2137 – Crack propagation through kerb



Figure 2138 – Crack propagation through kerb



Figure 2139 – Crack propagation through kerb



Figure 2140 – Crack propagation through kerb



Figure 2141 – Crack propagation through kerb



Figure 2142 – General Condition of kerb



Figure 2143 – Crack propagation through kerb



Figure 2144 – Crack propagation through kerb



Figure 2145 – Crack propagation through kerb



Figure 2146 – Crack propagation and loss of material through kerb



Figure 2147 – Crack propagation through kerb



Figure 2148 – Crack propagation through kerb



Figure 2149 – General Condition of stormwater inlet pit



Figure 2150 – General Condition of kerb



Figure 2151 – Crack propagation through kerb



Figure 2152 – General Condition of kerb and gutter



Figure 2153 – General Condition of kerb and gutter



Figure 2154 – Crack propagation through kerb and gutter



Figure 2155 – General Condition of kerb and gutter



Figure 2156 – Crack propagation through kerb



Figure 2157 – Loss of material through kerb and gutter



Figure 2158 – Crack propagation through kerb



Figure 2159 – General Condition of stormwater inlet pit



Figure 2160 – Crack propagation through kerb



Figure 2161 – General Condition of layback and gutter



Figure 2162 – General Condition of kerb and gutter



Figure 2163 – General Condition of kerb and gutter



Figure 2164 – Crack propagation through kerb and gutter



Figure 2165 – Crack propagation and loss of material through kerb and gutter



Figure 2166 – Crack propagation through kerb and gutter



Figure 2167 – General Condition of stormwater inlet pit



Figure 2168 – General Condition of kerb and gutter



Figure 2169 – General Condition of kerb and gutter



Figure 2170 – Crack propagation through kerb



Figure 2171 – Crack propagation through kerb



Figure 2172 – Crack propagation through kerb and gutter



Figure 2173 – Crack propagation through kerb and gutter



Figure 2174 – Crack propagation through kerb and gutter



Figure 2175 – Crack propagation through kerb and gutter

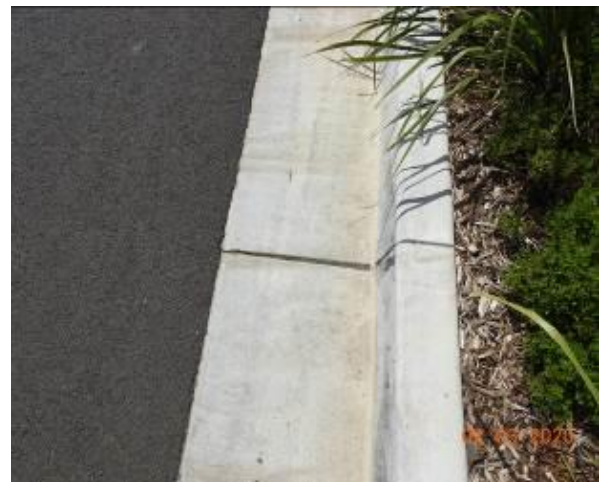


Figure 2176 – Crack propagation through kerb



Figure 2177 – General Condition of kerb and gutter



Figure 2178 – Crack propagation through kerb and gutter



Figure 2179 – Crack propagation through kerb



Figure 2180 – Crack propagation through kerb and gutter



Figure 2181 – Crack propagation and loss of material through kerb and gutter



Figure 2182 – General Condition of layback and gutter



Figure 2183 – Crack propagation through kerb



Figure 2184 – General Condition of stormwater inlet pit



Figure 2185 – Crack propagation through kerb



Figure 2186 – General Condition of kerb and gutter



Figure 2187 – Crack propagation through kerb and gutter



Figure 2188 – Crack propagation through kerb and gutter



Figure 2189 – Crack propagation through kerb and gutter



Figure 2190 – Crack propagation through kerb and gutter



Figure 2191 – Crack propagation through kerb and gutter



Figure 2192 – General Condition of kerb and gutter



Figure 2193 – General Condition of stormwater inlet pit



Figure 2194 – General Condition of layback and gutter



Figure 2195 – Crack propagation through layback and gutter



Figure 2196 – General Condition of layback and gutter



Figure 2197 – General Condition of layback and gutter



Figure 2198 – General Condition of gutter



Figure 2199 – General Condition of road surface



Figure 2200 – General Condition of road surface



Figure 2201 – General Condition of road surface



Figure 2202 – General Condition of road surface



Figure 2203 – General Condition of road surface



Figure 2204 – General Condition of road surface



Figure 2205 – General Condition of road surface



Figure 2206 – General Condition of road surface



Figure 2207 – General Condition of road surface



Figure 2208 – General Condition of road surface



Figure 2209 – General Condition of road surface



Figure 2210 – General Condition of road surface



Figure 2211 – General Condition of road surface



Figure 2212 – General Condition of road surface



Figure 2213 – General Condition of road surface



Figure 2214 – General Condition of road surface



Figure 2215 – General Condition of road surface



Figure 2216 – General Condition of road surface



Figure 2217 – General Condition of road surface



Figure 2218 – General Condition of road surface



Figure 2219 – General Condition of road surface



Figure 2220 – General Condition of road surface



Figure 2221 – General Condition of road surface



Figure 2222 – General Condition of road surface



Figure 2223 – General Condition of road surface



Figure 2224 – General Condition of road surface



Figure 2225 – General Condition of road surface



Figure 2226 – General Condition of road surface



Figure 2227 – General Condition of road surface



Figure 2228 – General Condition of road surface



Figure 2229 – General Condition of road surface



Figure 2230 – General Condition of road surface



Figure 2231 – General Condition of road surface



Figure 2232 – General Condition of road surface



Figure 2233 – General Condition of road surface



Figure 2234 – General Condition of road surface



Figure 2235 – General Condition of road surface



Figure 2236 – General Condition of road surface



Figure 2237 – General Condition of street sign / traffic light



Figure 2238 – General Condition of street sign



Figure 2239 – General Condition of street sign



Figure 2240 – General Condition of street sign



Figure 2241 – General Condition of street sign



Figure 2242 – General Condition of lamp post
Identification No.922675



Figure 2243 – General Condition of lamp post



Figure 2244 – General Condition of lamp post
Identification No.922678



Figure 2245 – General Condition of lamp post



Figure 2246 – General Condition of lamp post
Identification No.922677



Figure 2247 – General Condition of lamp post



Figure 2248 – General Condition of plantation



Figure 2249 – General Condition of lamp post
Identification No.922678



Figure 2250 – General Condition of lamp post



Figure 2251 – General Condition of street sign /
plantation



Figure 2252 – General Condition of lamp post
Identification No.922679



Figure 2253 – General Condition of lamp post



Figure 2254 – General Condition of electricity box
Identification No.145159A / S.L.C.P.1550



Figure 2255 – General Condition of electricity box
Identification No. S145159



Figure 2256 – General Condition of electricity box



Figure 2257 – General Condition of electricity sub-
station Identification No. 35069



Figure 2258 – General Condition of electricity sub-
station Identification No. 35069



Figure 2259 – General Condition of electricity sub-
station Identification No. 35069



Figure 2260 – General Condition of lamp post
Identification No. 922680



Figure 2261 – General Condition of lamp post



Figure 2262 – General Condition of lamp post
Identification No. 922681



Figure 2263 – General Condition of lamp post



Figure 2264 – General Condition of street sign



Figure 2265 – General Condition of plantation



Figure 2266 – General Condition of lamp post
Identification No. 922682



Figure 2267 – General Condition of lamp post



Figure 2268 – General Condition of street sign



Figure 2269 – General Condition of street sign



Figure 2270 – General Condition of bus stop public bench



Figure 2271 – General Condition of lamp post
Identification No. 922683



Figure 2272 – General Condition of lamp post



Figure 2273 – General Condition of street sign



Figure 2274 – General Condition of lamp post
Identification No. 922684



Figure 2275 – General Condition of lamp post



Figure 2276 – General Condition of lamp post
Identification No. 922685



Figure 2277 – General Condition of lamp post



Figure 2278 – General Condition of electricity box
Identification No. 142079



Figure 2279 – General Condition of electricity box
Identification No. 142079



Figure 2280 – General Condition of street sign



Figure 2281 – General Condition of lamp post
Identification No. 922686



Figure 2282 – General Condition of street sign



Figure 2283 – General Condition of lamp post



Figure 2284 – General Condition of bus stop public bench



Figure 2285 – General Condition of street sign



Figure 2286 – General Condition of lamp post
Identification No. 922687



Figure 2287 – General Condition of street sign



Figure 2288 – General Condition of lamp post



Figure 2289 – General Condition of street sign



Figure 2290 – General Condition of lamp post
Identification No. 922689



Figure 2291 – General Condition of service pit



Figure 2292 – General Condition of lamp post



Figure 2293 – General Condition of electricity box
Identification No. 142083



Figure 2294 – General Condition of electricity box
Identification No. 4697



Figure 2295 – General Condition of electricity box

Comments

The section of Themeda Avenue which is associated with the subject site was inspected and photographic evidence compiled in order to depict the condition of the council assets along this particular stretch of road prior to the commencement of any work at the subject site.

The road surface of Themeda Avenue at the time of the inspection was in a good condition with no major defects.

At the same time the kerb, gutter and footpath which accompany the road way were also inspected. At the time of this inspection they were found to be in a reasonable condition. There was evidence of Crack propagation and loss of material through the kerb, gutter and footpath as well as cases of Separation and Evidence of patchwork through kerb and gutter.

The condition of the lamp posts, plantation, electricity boxes, electricity sub-stations, public benches, traffic lights, stormwater inlet pits, street signs and service pits was also inspected and were determined to be in a reasonable condition. There was evidence of material loss through service pit as well as crack propagation through stormwater inlet pit.

Refer to Appendix (E) for photographic records of the above.

Appendix F (Car Park P1)



❖ The map is taken from the Nearmaps website that holds copyright to this content.



Figure 2296 – The following images display condition of Carpark 1



Figure 2297 – General Condition of driveway pavement



Figure 2298 – General Condition of carpark pavement



Figure 2299 – General Condition of carpark pavement



Figure 2300 – General Condition of carpark pavement



Figure 2301 – General Condition of carpark pavement



Figure 2302 – General Condition of carpark pavement



Figure 2304 – General Condition of carpark pavement



Figure 2306 – General Condition of carpark pavement



Figure 2303 – General Condition of carpark pavement



Figure 2305 – General Condition of carpark pavement



Figure 2307 – General Condition of carpark pavement



Figure 2308 – General Condition of carpark pavement



Figure 2309 – General Condition of carpark pavement



Figure 2310 – General Condition of carpark pavement



Figure 2311 – General Condition of carpark pavement



Figure 2312 – General Condition of carpark pavement



Figure 2313 – General Condition of carpark pavement



Figure 2314 – General Condition of carpark pavement



Figure 2315 – General Condition of carpark pavement



Figure 2316 – General Condition of carpark pavement



Figure 2317 – General Condition of carpark pavement



Figure 2318 – General Condition of carpark pavement



Figure 2319 – General Condition of carpark pavement



Figure 2320 – General Condition of carpark pavement



Figure 2321 – General Condition of carpark pavement



Figure 2322 – General Condition of carpark pavement



Figure 2323 – General Condition of carpark pavement



Figure 2324 – General Condition of carpark pavement



Figure 2325 – General Condition of carpark pavement



Figure 2326 – General Condition of carpark pavement



Figure 2327 – General Condition of carpark pavement



Figure 2328 – General Condition of carpark pavement



Figure 2329 – General Condition of carpark pavement



Figure 2330 – General Condition of carpark pavement



Figure 2331 – General Condition of carpark pavement



Figure 2332 – General Condition of carpark pavement



Figure 2333 – General Condition of carpark pavement



Figure 2334 – General Condition of carpark pavement



Figure 2335 – General Condition of carpark pavement



Figure 2336 – General Condition of carpark pavement



Figure 2337 – General Condition of carpark pavement



Figure 2338 – General Condition of carpark pavement



Figure 2339 – General Condition of carpark pavement



Figure 2340 – General Condition of carpark pavement



Figure 2341 – General Condition of carpark pavement



Figure 2342 – General Condition of carpark pavement



Figure 2343 – General Condition of carpark pavement



Figure 2344 – General Condition of carpark pavement



Figure 2345 – General Condition of carpark pavement



Figure 2346 – General Condition of carpark pavement



Figure 2347 – General Condition of carpark pavement



Figure 2348 – General Condition of carpark pavement



Figure 2349 – General Condition of carpark pavement



Figure 2350 – General Condition of carpark pavement



Figure 2351 – General Condition of carpark pavement



Figure 2352 – General Condition of carpark pavement



Figure 2353 – General Condition of carpark pavement



Figure 2354 – General Condition of carpark pavement



Figure 2355 – General Condition of carpark pavement



Figure 2356 – General Condition of carpark pavement



Figure 2357 – General Condition of carpark pavement



Figure 2358 – General Condition of carpark pavement



Figure 2359 – General Condition of carpark pavement



Figure 2360 – General Condition of carpark pavement



Figure 2361 – Crack propagation through carpark pavement



Figure 2362 – General Condition of carpark pavement



Figure 2363 – General Condition of carpark pavement



Figure 2364 – General Condition of carpark pavement



Figure 2365 – General Condition of carpark pavement



Figure 2366 – General Condition of carpark pavement



Figure 2367 – General Condition of carpark pavement



Figure 2368 – General Condition of carpark pavement



Figure 2369 – General Condition of carpark pavement



Figure 2370 – General Condition of carpark pavement



Figure 2371 – General Condition of carpark pavement



Figure 2372 – General Condition of carpark pavement



Figure 2373 – General Condition of carpark pavement



Figure 2374 – General Condition of carpark pavement



Figure 2375 – General Condition of carpark pavement



Figure 2376 – General Condition of carpark pavement



Figure 2377 – Loss of material through carpark pavement



Figure 2378 – General Condition of carpark pavement



Figure 2379 – General Condition of carpark pavement



Figure 2380 – General Condition of carpark pavement



Figure 2381 – General Condition of carpark pavement



Figure 2382 – General Condition of carpark pavement



Figure 2383 – General Condition of carpark pavement



Figure 2384 – General Condition of carpark pavement



Figure 2385 – General Condition of carpark pavement



Figure 2386 – General Condition of carpark pavement



Figure 2387 – General Condition of carpark pavement



Figure 2388 – General Condition of carpark pavement



Figure 2389 – General Condition of carpark pavement



Figure 2390 – General Condition of carpark pavement



Figure 2391 – General Condition of carpark pavement



Figure 2392 – General Condition of carpark pavement



Figure 2393 – General Condition of carpark pavement



Figure 2394 – General Condition of carpark pavement



Figure 2395 – General Condition of carpark pavement



Figure 2396 – General Condition of carpark pavement



Figure 2397 – General Condition of carpark pavement



Figure 2398 – General Condition of carpark pavement



Figure 2399 – General Condition of carpark pavement



Figure 2400 – General Condition of street sign



Figure 2401 – General Condition of street sign



Figure 2402 – General Condition of street sign



Figure 2403 – General Condition of street sign



Figure 2404 – General Condition of street sign



Figure 2405 – General Condition of electricity box



Figure 2406 – General Condition of lamp post



Figure 2407 – General Condition of lamp post



Figure 2408 – General Condition of electricity box



Figure 2409 – General Condition of street sign



Figure 2410 – General Condition of street sign



Figure 2411 – General Condition of street sign



Figure 2412 – General Condition of lamp post



Figure 2413 – General Condition of lamp post



Figure 2414 – General Condition of lamp post



Figure 2415 – General Condition of street sign



Figure 2416 – General Condition of traffic bollard



Figure 2417 – General Condition of traffic bollard



Figure 2418 – General Condition of traffic bollard



Figure 2419 – General Condition of lamp post



Figure 2420 – General Condition of traffic bollard



Figure 2421 – General Condition of street sign



Figure 2422 – General Condition of traffic bollard



Figure 2423 – General Condition of lamp post



Figure 2424 – General Condition of traffic bollard



Figure 2425 – General Condition of street sign



Figure 2426 – General Condition of traffic bollard



Figure 2427 – General Condition of traffic bollard



Figure 2428 – General Condition of street sign



Figure 2429 – General Condition of lamp post



Figure 2430 – General Condition of lamp post



Figure 2431 – General Condition of lamp post



Figure 2432 – General Condition of lamp post



Figure 2433 – General Condition of lamp post



Figure 2434 – General Condition of lamp post



Figure 2436 – General Condition of street sign



Figure 2438 – General Condition of street sign



Figure 2435 – General Condition of lamp post



Figure 2437 – General Condition of traffic bollard



Figure 2439 – General Condition of traffic bollard



Figure 2440 – General Condition of traffic bollard



Figure 2441 – General Condition of traffic bollard



Figure 2442 – Physical damage traffic bollard



Figure 2443 – General Condition of street sign



Figure 2444 – General Condition of traffic bollard



Figure 2445 – General Condition of traffic bollard



Figure 2446 – General Condition of lamp post



Figure 2447 – General Condition of traffic bollard



Figure 2448 – General Condition of lamp post



Figure 2449 – General Condition of lamp post



Figure 2450 – General Condition of lamp post



Figure 2451 – General Condition of lamp post



Figure 2452 – General Condition of lamp post



Figure 2453 – General Condition of lamp post



Figure 2454 – General Condition of street sign



Figure 2455 – General Condition of layback



Figure 2456 – General Condition of kerb and gutter



Figure 2457 – General Condition of stormwater inlet pit



Figure 2458 – General Condition of kerb, gutter and footpath pavement



Figure 2459 – General Condition of footpath pavement



Figure 2460 – General Condition of kerb and gutter



Figure 2461 – General Condition of kerb



Figure 2462 – General Condition of kerb and gutter



Figure 2463 – General Condition of kerb and gutter



Figure 2464 – General Condition of kerb and gutter



Figure 2465 – General Condition of kerb and gutter



Figure 2466 – General Condition of kerb



Figure 2467 – Crack propagation through footpath pavement



Figure 2468 – Crack propagation through footpath pavement



Figure 2469 – General Condition of footpath pavement



Figure 2470 – General Condition of kerb and gutter



Figure 2471 – General Condition of layback and gutter



Figure 2472 – General Condition of kerb



Figure 2473 – General Condition of kerb



Figure 2474 – General Condition of kerb



Figure 2475 – General Condition of kerb and gutter



Figure 2476 – General Condition of kerb



Figure 2477 – General Condition of kerb and gutter



Figure 2478 – General Condition of kerb and gutter



Figure 2479 – General Condition of traffic island kerb



Figure 2480 – General Condition of traffic island kerb



Figure 2481 – General Condition of kerb



Figure 2482 – General Condition of kerb and gutter



Figure 2483 – General Condition of traffic island kerb



Figure 2484 – General Condition of kerb and gutter



Figure 2485 – General Condition of kerb and gutter



Figure 2486 – Crack propagation through kerb



Figure 2487 – General Condition of kerb and gutter



Figure 2488 – General Condition of kerb and gutter



Figure 2489 – Crack propagation through gutter



Figure 2490 – General Condition of stormwater inlet pit



Figure 2491 – General Condition of kerb and gutter



Figure 2492 – General Condition of traffic island kerb



Figure 2493 – General Condition of stormwater inlet pit

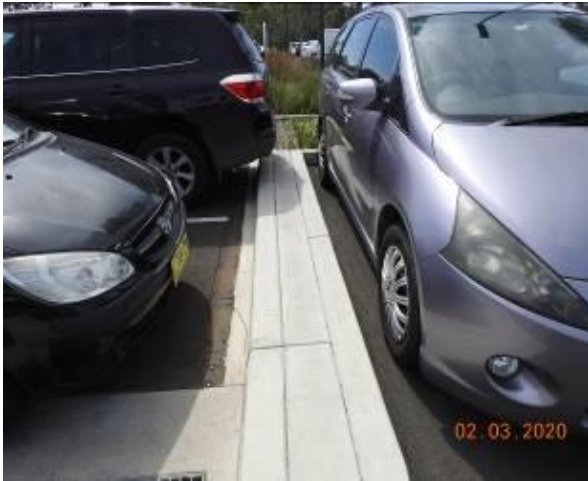


Figure 2494 – General Condition of traffic island kerb



Figure 2495 – General Condition of kerb



Figure 2496 – General Condition of traffic island kerb



Figure 2497 – General Condition of traffic island kerb



Figure 2498 – General Condition of kerb and gutter



Figure 2499 – General Condition of stormwater inlet pit



Figure 2500 – General Condition of kerb and gutter



Figure 2501 – General Condition of stormwater inlet pit



Figure 2502 – General Condition of kerb



Figure 2503 – General Condition of kerb



Figure 2504 – General Condition of traffic island kerb



Figure 2505 – General Condition of kerb



Figure 2506 – General Condition of kerb



Figure 2507 – Crack propagation and loss of material through kerb



Figure 2508 – General Condition of kerb



Figure 2509 – Crack propagation through kerb

Comments

The property Tallawong station – car park 1, is the neighbouring property to our client's site. It was photographed and inspected prior to any construction works on the subject site and was found to be in a reasonable condition. The property serves as a car park.

The road pavement of the car park was in a reasonable condition with evidence of cracking and material loss. The kerb, gutter and footpath in the car park were also inspected, they were in a reasonable condition with evidence of cracking through the footpath pavement. As well as evidence of material loss through kerb and gutter.

The street signs, electricity boxes, lamp posts, traffic bollards and stormwater inlet pits were in a good condition.

Refer to Appendix (F) for photographic records of the above.

Appendix G (Car Park P2)



❖ The map is taken from the Nearmaps website that holds copyright to this content.



Figure 2510 – The following images display condition of Carpark 2



Figure 2511 – General Condition of driveway pavement



Figure 2512 – Crack propagation through layback and gutter



Figure 2513 – Crack propagation through layback and gutter



Figure 2514 – General Condition of driveway pavement



Figure 2515 – Crack propagation through driveway pavement



Figure 2516 – General Condition of driveway pavement



Figure 2517 – General Condition of driveway pavement



Figure 2518 – Crack propagation through driveway pavement



Figure 2519 – Crack propagation through driveway pavement



Figure 2520 – General Condition of driveway pavement



Figure 2521 – General Condition of driveway pavement



Figure 2522 – General Condition of carpark pavement



Figure 2523 – General Condition of carpark pavement



Figure 2524 – General Condition of carpark pavement



Figure 2525 – General Condition of carpark pavement



Figure 2526 – General Condition of carpark pavement



Figure 2527 – General Condition of carpark pavement



Figure 2528 – General Condition of carpark pavement



Figure 2529 – General Condition of carpark pavement



Figure 2530 – General Condition of carpark pavement



Figure 2531 – General Condition of carpark pavement



Figure 2532 – General Condition of carpark pavement



Figure 2533 – General Condition of carpark pavement



Figure 2534 – General Condition of carpark pavement



Figure 2535 – General Condition of carpark pavement



Figure 2536 – General Condition of carpark pavement



Figure 2537 – General Condition of carpark pavement



Figure 2538 – General Condition of carpark pavement



Figure 2539 – General Condition of carpark pavement



Figure 2540 – General Condition of carpark pavement



Figure 2541 – General Condition of carpark pavement



Figure 2542 – General Condition of carpark pavement



Figure 2543 – General Condition of carpark pavement



Figure 2544 – General Condition of carpark pavement



Figure 2545 – General Condition of carpark pavement



Figure 2546 – General Condition of carpark pavement



Figure 2547 – General Condition of carpark pavement



Figure 2548 – General Condition of carpark pavement



Figure 2549 – General Condition of carpark pavement



Figure 2550 – General Condition of carpark pavement



Figure 2551 – General Condition of carpark pavement



Figure 2552 – General Condition of carpark pavement



Figure 2553 – General Condition of carpark pavement



Figure 2554 – General Condition of carpark pavement



Figure 2555 – General Condition of carpark pavement



Figure 2556 – General Condition of carpark pavement



Figure 2557 – General Condition of carpark pavement



Figure 2558 – General Condition of carpark pavement



Figure 2559 – General Condition of carpark pavement



Figure 2560 – General Condition of carpark pavement



Figure 2561 – General Condition of carpark pavement



Figure 2562 – General Condition of carpark pavement



Figure 2563 – General Condition of carpark pavement



Figure 2564 – General Condition of carpark pavement



Figure 2565 – General Condition of carpark pavement



Figure 2566 – Crack propagation through carpark pavement



Figure 2567 – General Condition of carpark pavement



Figure 2568 – General Condition of carpark pavement



Figure 2569 – General Condition of carpark pavement



Figure 2570 – General Condition of carpark pavement



Figure 2571 – General Condition of carpark pavement



Figure 2572 – General Condition of carpark pavement



Figure 2573 – General Condition of carpark pavement



Figure 2574 – General Condition of carpark pavement



Figure 2575 – General Condition of carpark pavement



Figure 2576 – General Condition of carpark pavement



Figure 2577 – General Condition of carpark pavement



Figure 2578 – General Condition of carpark pavement



Figure 2579 – General Condition of carpark pavement



Figure 2580 – General Condition of carpark pavement



Figure 2581 – General Condition of carpark pavement



Figure 2582 – General Condition of carpark pavement



Figure 2583 – General Condition of carpark pavement



Figure 2584 – General Condition of carpark pavement



Figure 2585 – General Condition of carpark pavement



Figure 2586 – General Condition of carpark pavement



Figure 2587 – General Condition of carpark pavement



Figure 2588 – General Condition of carpark pavement



Figure 2589 – General Condition of carpark pavement



Figure 2590 – General Condition of carpark pavement



Figure 2591 – General Condition of carpark pavement



Figure 2592 – General Condition of carpark pavement



Figure 2593 – General Condition of carpark pavement



Figure 2594 – General Condition of carpark pavement



Figure 2595 – General Condition of carpark pavement



Figure 2596 – General Condition of carpark pavement



Figure 2597 – General Condition of carpark pavement



Figure 2598 – General Condition of carpark pavement



Figure 2599 – General Condition of carpark pavement



Figure 2600 – General Condition of carpark pavement



Figure 2601 – General Condition of carpark pavement



Figure 2602 – General Condition of carpark pavement



Figure 2603 – General Condition of carpark pavement



Figure 2604 – General Condition of carpark pavement



Figure 2605 – General Condition of carpark pavement



Figure 2606 – General Condition of carpark pavement



Figure 2607 – General Condition of carpark pavement



Figure 2608 – General Condition of carpark pavement



Figure 2609 – General Condition of carpark pavement



Figure 2610 – General Condition of carpark pavement



Figure 2611 – General Condition of carpark pavement



Figure 2612 – General Condition of carpark pavement



Figure 2613 – General Condition of carpark pavement



Figure 2614 – General Condition of carpark pavement



Figure 2615 – General Condition of carpark pavement



Figure 2616 – General Condition of carpark pavement



Figure 2617 – General Condition of carpark pavement



Figure 2618 – General Condition of carpark pavement



Figure 2619 – General Condition of carpark pavement



Figure 2620 – Crack propagation through carpark pavement



Figure 2621 – General Condition of carpark pavement



Figure 2622 – General Condition of carpark pavement



Figure 2623 – General Condition of carpark pavement



Figure 2624 – General Condition of carpark pavement



Figure 2625 – General Condition of carpark pavement



Figure 2626 – General Condition of carpark pavement



Figure 2627 – General Condition of carpark pavement



Figure 2628 – General Condition of carpark pavement



Figure 2629 – General Condition of carpark pavement



Figure 2630 – General Condition of carpark pavement



Figure 2631 – General Condition of carpark pavement



Figure 2632 – General Condition of carpark pavement



Figure 2633 – General Condition of carpark pavement



Figure 2634 – General Condition of carpark pavement



Figure 2635 – General Condition of carpark pavement



Figure 2636 – General Condition of carpark pavement



Figure 2637 – General Condition of carpark pavement



Figure 2638 – General Condition of carpark pavement



Figure 2639 – General Condition of carpark pavement



Figure 2640 – General Condition of carpark pavement



Figure 2641 – General Condition of carpark pavement



Figure 2642 – General Condition of carpark pavement



Figure 2643 – General Condition of carpark pavement



Figure 2644 – General Condition of carpark pavement



Figure 2645 – General Condition of carpark pavement



Figure 2646 – General Condition of carpark pavement



Figure 2647 – Crack propagation through carpark pavement



Figure 2648 – General Condition of carpark pavement



Figure 2649 – Crack propagation through carpark pavement



Figure 2650 – Crack propagation through carpark pavement



Figure 2651 – Crack propagation through carpark pavement



Figure 2652 – Crack propagation through carpark pavement



Figure 2653 – Crack propagation through carpark pavement



Figure 2654 – Crack propagation through carpark pavement



Figure 2655 – Crack propagation through carpark pavement



Figure 2656 – Crack propagation through carpark pavement



Figure 2657 – General Condition of carpark pavement



Figure 2658 – General Condition of carpark pavement



Figure 2659 – General Condition of carpark pavement



Figure 2660 – General Condition of carpark pavement



Figure 2661 – General Condition of carpark pavement



Figure 2662 – General Condition of carpark pavement



Figure 2663 – General Condition of carpark pavement



Figure 2664 – General Condition of carpark pavement



Figure 2665 – General Condition of carpark pavement



Figure 2666 – General Condition of carpark pavement



Figure 2667 – General Condition of carpark pavement



Figure 2668 – General Condition of carpark pavement



Figure 2669 – General Condition of carpark pavement



Figure 2670 – General Condition of carpark pavement



Figure 2671 – General Condition of carpark pavement



Figure 2672 – General Condition of carpark pavement



Figure 2673 – General Condition of carpark pavement



Figure 2674 – General Condition of carpark pavement



Figure 2675 – General Condition of carpark pavement



Figure 2676 – General Condition of carpark pavement



Figure 2677 – General Condition of carpark pavement



Figure 2678 – General Condition of carpark pavement



Figure 2679 – General Condition of carpark pavement



Figure 2680 – General Condition of carpark pavement



Figure 2681 – General Condition of carpark pavement



Figure 2682 – General Condition of carpark pavement



Figure 2683 – General Condition of carpark pavement



Figure 2684 – General Condition of carpark pavement



Figure 2685 – General Condition of carpark pavement



Figure 2686 – General Condition of carpark pavement



Figure 2687 – General Condition of carpark pavement



Figure 2688 – General Condition of carpark pavement



Figure 2689 – General Condition of carpark pavement



Figure 2690 – General Condition of carpark pavement



Figure 2691 – General Condition of carpark pavement



Figure 2692 – General Condition of carpark pavement



Figure 2693 – General Condition of carpark pavement



Figure 2694 – General Condition of carpark pavement



Figure 2695 – General Condition of carpark pavement



Figure 2696 – General Condition of carpark pavement



Figure 2697 – General Condition of carpark pavement



Figure 2698 – General Condition of carpark pavement



Figure 2699 – General Condition of carpark pavement



Figure 2700 – General Condition of carpark pavement



Figure 2701 – General Condition of carpark pavement



Figure 2702 – General Condition of carpark pavement



Figure 2703 – General Condition of carpark pavement



Figure 2704 – General Condition of carpark pavement



Figure 2705 – General Condition of carpark pavement



Figure 2706 – Crack propagation through carpark pavement



Figure 2707 – General Condition of carpark pavement



Figure 2708 – General Condition of carpark pavement



Figure 2709 – General Condition of carpark pavement



Figure 2710 – General Condition of carpark pavement



Figure 2711 – General Condition of carpark pavement



Figure 2712 – General Condition of carpark pavement



Figure 2713 – General Condition of carpark pavement



Figure 2714 – General Condition of carpark pavement



Figure 2715 – General Condition of carpark pavement



Figure 2716 – General Condition of carpark pavement



Figure 2717 – General Condition of carpark pavement



Figure 2718 – General Condition of carpark pavement



Figure 2719 – General Condition of carpark pavement



Figure 2720 – General Condition of carpark pavement



Figure 2721 – General Condition of carpark pavement



Figure 2722 – General Condition of carpark pavement



Figure 2723 – General Condition of carpark pavement



Figure 2724 – General Condition of carpark pavement



Figure 2725 – General Condition of carpark pavement



Figure 2726 – General Condition of carpark pavement



Figure 2727 – General Condition of carpark pavement



Figure 2728 – General Condition of carpark pavement



Figure 2729 – General Condition of carpark pavement



Figure 2730 – Crack propagation through carpark pavement



Figure 2731 – General Condition of carpark pavement



Figure 2732 – General Condition of carpark pavement



Figure 2734 – General Condition of carpark pavement



Figure 2736 – General Condition of carpark pavement



Figure 2733 – General Condition of carpark pavement



Figure 2735 – General Condition of carpark pavement



Figure 2737 – General Condition of carpark pavement



Figure 2738 – General Condition of carpark pavement



Figure 2739 – General Condition of carpark pavement



Figure 2740 – General Condition of carpark pavement



Figure 2741 – General Condition of carpark pavement



Figure 2742 – General Condition of carpark pavement



Figure 2743 – General Condition of carpark pavement



Figure 2744 – General Condition of carpark pavement



Figure 2745 – Crack propagation through carpark pavement



Figure 2746 – General Condition of carpark pavement



Figure 2747 – Crack propagation through carpark pavement



Figure 2748 – General Condition of carpark pavement



Figure 2749 – Crack propagation through carpark pavement



Figure 2750 – General Condition of carpark pavement



Figure 2752 – General Condition of carpark pavement



Figure 2754 – General Condition of carpark pavement



Figure 2751 – General Condition of carpark pavement



Figure 2753 – General Condition of carpark pavement



Figure 2755 – General Condition of carpark pavement



Figure 2756 – General Condition of carpark pavement



Figure 2757 – Loss of material through carpark pavement



Figure 2758 – General Condition of street sign



Figure 2759 – General Condition of lamp post



Figure 2760 – General Condition of lamp post



Figure 2761 – General Condition of street sign



Figure 2762 – General Condition of lamp post



Figure 2763 – General Condition of street sign



Figure 2764 – General Condition of lamp post



Figure 2765 – General Condition of street sign



Figure 2766 – General Condition of lamp post



Figure 2767 – General Condition of lamp post



Figure 2768 – General Condition of plantation



Figure 2769 – General Condition of street sign



Figure 2770 – General Condition of street sign



Figure 2771 – General Condition of lamp post



Figure 2772 – General Condition of lamp post



Figure 2773 – General Condition of lamp post



Figure 2774 – General Condition of lamp post



Figure 2775 – General Condition of lamp post / plantation



Figure 2776 – General Condition of lamp post / plantation



Figure 2777 – General Condition of lamp post / plantation



Figure 2778 – General Condition of lamp post / plantation



Figure 2779 – General Condition of lamp post / plantation



Figure 2780 – General Condition of lamp post / plantation



Figure 2781 – General Condition of street sign



Figure 2782 – General Condition of lamp post / plantation



Figure 2783 – General Condition of street sign



Figure 2784 – General Condition of kerb and gutter



Figure 2785 – Crack propagation through kerb



Figure 2786 – General Condition of stormwater inlet pit



Figure 2787 – General Condition of kerb and gutter



Figure 2788 – Crack propagation through kerb and gutter



Figure 2789 – General Condition of kerb and gutter



Figure 2790 – General Condition of stormwater inlet pit



Figure 2791 – General Condition of kerb and gutter



Figure 2792 – General Condition of traffic island kerb



Figure 2793 – General Condition of traffic island kerb and footpath pavement



Figure 2794 – General Condition of traffic island kerb and footpath pavement



Figure 2795 – General Condition of traffic island kerb and footpath pavement



Figure 2796 – General Condition of traffic island kerb and footpath pavement



Figure 2797 – General Condition of kerb and gutter



Figure 2798 – General Condition of kerb



Figure 2799 – General Condition of kerb



Figure 2800 – General Condition of kerb



Figure 2801 – General Condition of kerb and gutter



Figure 2802 – General Condition of kerb



Figure 2803 – General Condition of kerb and footpath pavement



Figure 2804 – General Condition of kerb and footpath pavement



Figure 2805 – General Condition of kerb, gutter and footpath pavement



Figure 2806 – General Condition of kerb



Figure 2807 – General Condition of kerb



Figure 2808 – General Condition of kerb



Figure 2809 – General Condition of kerb



Figure 2810 – General Condition of kerb and footpath pavement



Figure 2811 – General Condition of kerb and gutter



Figure 2812 – General Condition of stormwater inlet pit



Figure 2813 – General Condition of kerb and gutter



Figure 2814 – General Condition of stormwater inlet pit



Figure 2815 – General Condition of kerb and gutter



Figure 2816 – General Condition of kerb and gutter



Figure 2817 – General Condition of kerb and gutter



Figure 2818 – General Condition of stormwater inlet pit



Figure 2819 – General Condition of kerb



Figure 2820 – General Condition of kerb



Figure 2821 – General Condition of kerb



Figure 2822 – General Condition of kerb



Figure 2823 – General Condition of kerb



Figure 2824 – General Condition of kerb and gutter



Figure 2825 – General Condition of kerb and gutter



Figure 2826 – General Condition of kerb and gutter



Figure 2827 – General Condition of stormwater inlet pit



Figure 2828 – General Condition of kerb and gutter



Figure 2829 – General Condition of kerb and gutter



Figure 2830 – General Condition of kerb and gutter



Figure 2831 – General Condition of kerb



Figure 2832 – General Condition of kerb



Figure 2833 – General Condition of kerb and gutter



Figure 2834 – Loss of material through kerb



Figure 2835 – General Condition of kerb



Figure 2836 – General Condition of kerb



Figure 2837 – General Condition of kerb



Figure 2838 – General Condition of kerb



Figure 2839 – General Condition of kerb



Figure 2840 – General Condition of kerb



Figure 2841 – General Condition of kerb



Figure 2842 – General Condition of kerb



Figure 2843 – General Condition of kerb



Figure 2844 – General Condition of traffic island kerb



Figure 2845 – General Condition of traffic island kerb



Figure 2846 – General Condition of traffic island kerb



Figure 2847 – General Condition of traffic island kerb



Figure 2848 – General Condition of kerb



Figure 2849 – General Condition of kerb



Figure 2850 – General Condition of kerb



Figure 2851 – General Condition of kerb



Figure 2852 – General Condition of kerb



Figure 2853 – General Condition of kerb



Figure 2854 – General Condition of kerb



Figure 2855 – General Condition of kerb

Comments

The property Tallawong station – car park 2, is the neighbouring property to our client's site. It was photographed and inspected prior to any construction works on the subject site and was found to be in a reasonable condition. The property serves as a car park.

The road pavement of the car park was in a reasonable condition with evidence of cracking and material loss. The kerb, gutter and footpath in the car park were also inspected, they were in a reasonable condition with evidence of cracking through the kerb, gutter and footpath pavement. As well as evidence of material loss through kerb and gutter.

The street signs, lamp posts, traffic islands, plantation and stormwater inlet pits were in a good condition.

Refer to Appendix (G) for photographic records of the above.

Appendix H (Car Park P3)



❖ The map is taken from the Nearmaps website that holds copyright to this content.



Figure 2856 – The following images display condition of carpark 3



Figure 2857 – General Condition of driveway pavement



Figure 2858 – General Condition of driveway pavement



Figure 2859 – General Condition of driveway pavement



Figure 2860 – Crack propagation through driveway pavement



Figure 2861 – General Condition of driveway pavement



Figure 2862 – General Condition of carpark pavement



Figure 2863 – Evidence of patchwork through carpark pavement



Figure 2864 – General Condition of carpark pavement



Figure 2865 – General Condition of carpark pavement



Figure 2866 – General Condition of carpark pavement



Figure 2867 – General Condition of carpark pavement



Figure 2868 – General Condition of carpark pavement



Figure 2869 – General Condition of carpark pavement



Figure 2870 – Crack propagation through carpark pavement



Figure 2871 – General Condition of carpark pavement



Figure 2872 – General Condition of carpark pavement



Figure 2873 – General Condition of carpark pavement



Figure 2874 – Crack propagation through carpark pavement



Figure 2875 – Crack propagation through carpark pavement



Figure 2876 – General Condition of carpark pavement

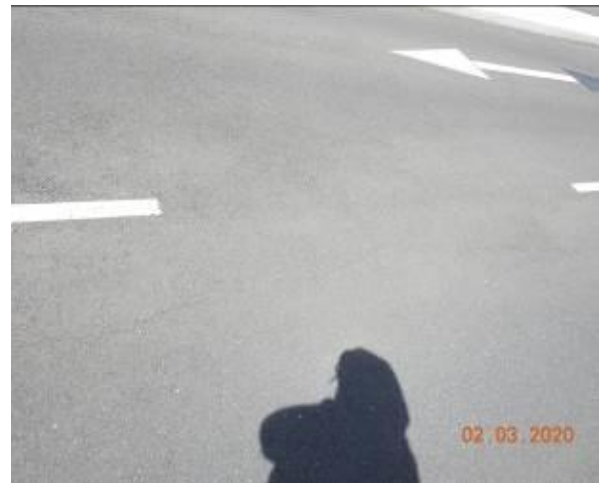


Figure 2877 – Crack propagation through carpark pavement



Figure 2878 – Crack propagation through carpark pavement



Figure 2879 – General Condition of carpark pavement



Figure 2880 – Crack propagation through carpark pavement



Figure 2881 – General Condition of carpark pavement



Figure 2882 – Crack propagation through carpark pavement



Figure 2883 – Crack propagation through carpark pavement



Figure 2884 – Crack propagation through carpark pavement



Figure 2885 – Crack propagation through carpark pavement



Figure 2886 – Crack propagation through carpark pavement



Figure 2887 – Crack propagation through carpark pavement



Figure 2888 – Crack propagation through carpark pavement



Figure 2889 – Crack propagation through carpark pavement



Figure 2890 – Crack propagation through carpark pavement



Figure 2891 – General Condition of carpark pavement



Figure 2892 – General Condition of carpark pavement



Figure 2893 – General Condition of carpark pavement



Figure 2894 – General Condition of carpark pavement



Figure 2895 – General Condition of carpark pavement



Figure 2896 – General Condition of carpark pavement



Figure 2897 – General Condition of carpark pavement



Figure 2898 – General Condition of carpark pavement



Figure 2899 – Crack propagation through carpark pavement



Figure 2900 – General Condition of carpark pavement



Figure 2901 – General Condition of carpark pavement



Figure 2902 – General Condition of carpark pavement



Figure 2903 – General Condition of carpark pavement



Figure 2904 – General Condition of carpark pavement



Figure 2905 – General Condition of carpark pavement



Figure 2906 – General Condition of carpark pavement



Figure 2907 – General Condition of carpark pavement



Figure 2908 – General Condition of carpark pavement



Figure 2909 – General Condition of carpark pavement



Figure 2910 – General Condition of carpark pavement



Figure 2911 – General Condition of carpark pavement



Figure 2912 – Crack propagation through carpark pavement



Figure 2913 – Crack propagation through carpark pavement



Figure 2914 – General Condition of carpark pavement



Figure 2915 – General Condition of carpark pavement



Figure 2916 – General Condition of carpark pavement



Figure 2917 – General Condition of carpark pavement



Figure 2918 – General Condition of carpark pavement



Figure 2919 – Loss of material through carpark pavement



Figure 2920 – General Condition of carpark pavement



Figure 2921 – General Condition of carpark pavement



Figure 2922 – General Condition of carpark pavement



Figure 2923 – General Condition of carpark pavement



Figure 2924 – General Condition of carpark pavement



Figure 2925 – General Condition of carpark pavement



Figure 2926 – General Condition of carpark pavement



Figure 2927 – General Condition of carpark pavement



Figure 2928 – General Condition of carpark pavement



Figure 2929 – General Condition of carpark pavement



Figure 2930 – General Condition of carpark pavement



Figure 2931 – General Condition of carpark pavement



Figure 2932 – General Condition of carpark pavement



Figure 2933 – General Condition of carpark pavement



Figure 2934 – General Condition of carpark pavement



Figure 2935 – General Condition of carpark pavement



Figure 2936 – General Condition of carpark pavement



Figure 2937 – Crack propagation through carpark pavement



Figure 2938 – General Condition of carpark pavement



Figure 2939 – Loss of material through carpark pavement



Figure 2940 – General Condition of carpark pavement



Figure 2941 – General Condition of carpark pavement



Figure 2942 – General Condition of carpark pavement



Figure 2943 – General Condition of carpark pavement



Figure 2944 – General Condition of carpark pavement



Figure 2945 – General Condition of carpark pavement



Figure 2946 – General Condition of carpark pavement



Figure 2947 – General Condition of carpark pavement



Figure 2948 – General Condition of carpark pavement



Figure 2949 – General Condition of carpark pavement



Figure 2950 – Crack propagation through carpark pavement



Figure 2951 – General Condition of carpark pavement



Figure 2952 – Crack propagation through carpark pavement



Figure 2953 – Crack propagation through carpark pavement



Figure 2954 – General Condition of carpark pavement



Figure 2955 – General Condition of carpark pavement



Figure 2956 – General Condition of carpark pavement



Figure 2957 – General Condition of carpark pavement



Figure 2958 – Crack propagation through carpark pavement



Figure 2959 – Crack propagation through carpark pavement



Figure 2960 – General Condition of carpark pavement



Figure 2961 – General Condition of carpark pavement



Figure 2962 – General Condition of carpark pavement



Figure 2963 – General Condition of carpark pavement



Figure 2964 – General Condition of carpark pavement



Figure 2965 – General Condition of carpark pavement



Figure 2966 – General Condition of carpark pavement



Figure 2967 – General Condition of carpark pavement



Figure 2968 – General Condition of carpark pavement



Figure 2969 – General Condition of carpark pavement



Figure 2970 – General Condition of carpark pavement



Figure 2971 – Crack propagation through carpark pavement



Figure 2972 – General Condition of carpark pavement



Figure 2973 – General Condition of carpark pavement



Figure 2974 – General Condition of carpark pavement



Figure 2975 – General Condition of carpark pavement



Figure 2976 – General Condition of carpark pavement



Figure 2977 – General Condition of carpark pavement



Figure 2978 – General Condition of carpark pavement



Figure 2979 – General Condition of carpark pavement



Figure 2980 – General Condition of carpark pavement



Figure 2981 – General Condition of carpark pavement



Figure 2982 – General Condition of carpark pavement



Figure 2983 – General Condition of carpark pavement



Figure 2984 – General Condition of carpark pavement



Figure 2985 – General Condition of carpark pavement



Figure 2986 – General Condition of carpark pavement



Figure 2987 – General Condition of carpark pavement



Figure 2988 – General Condition of carpark pavement



Figure 2989 – General Condition of carpark pavement



Figure 2990 – General Condition of carpark pavement



Figure 2991 – General Condition of carpark pavement



Figure 2992 – General Condition of carpark pavement



Figure 2993 – General Condition of carpark pavement



Figure 2994 – General Condition of carpark pavement



Figure 2995 – General Condition of carpark pavement



Figure 2996 – Loss of material through carpark pavement



Figure 2997 – General Condition of lamp post / plantation



Figure 2998 – General Condition of lamp post / plantation



Figure 2999 – General Condition of lamp post / plantation



Figure 3000 – General Condition of lamp post / plantation



Figure 3001 – General Condition of lamp post / plantation



Figure 3002 – General Condition of electricity box



Figure 3003 – General Condition of lamp post / plantation



Figure 3004 – General Condition of lamp post / plantation



Figure 3005 – General Condition of lamp post / plantation



Figure 3006 – General Condition of lamp post / plantation



Figure 3007 – General Condition of lamp post / plantation



Figure 3008 – General Condition of lamp post / plantation



Figure 3009 – General Condition of street sign



Figure 3010 – General Condition of street sign



Figure 3011 – General Condition of lamp post / plantation



Figure 3012 – General Condition of carpark pavement



Figure 3014 – General Condition of carpark pavement



Figure 3016 – General Condition of carpark pavement



Figure 3013 – General Condition of carpark pavement



Figure 3015 – General Condition of carpark pavement



Figure 3017 – Crack propagation through carpark pavement



Figure 3018 – Crack propagation through carpark pavement



Figure 3019 – General Condition of carpark pavement



Figure 3020 – General Condition of carpark pavement



Figure 3021 – General Condition of carpark pavement



Figure 3022 – General Condition of carpark pavement



Figure 3023 – General Condition of carpark pavement



Figure 3024 – General Condition of carpark pavement



Figure 3025 – General Condition of carpark pavement



Figure 3026 – General Condition of carpark pavement



Figure 3027 – General Condition of carpark pavement



Figure 3028 – General Condition of carpark pavement



Figure 3029 – General Condition of carpark pavement



Figure 3030 – General Condition of carpark pavement



Figure 3032 – General Condition of carpark pavement



Figure 3034 – General Condition of carpark pavement



Figure 3031 – General Condition of carpark pavement



Figure 3033 – General Condition of carpark pavement



Figure 3035 – General Condition of carpark pavement



Figure 3036 – General Condition of carpark pavement



Figure 3037 – General Condition of carpark pavement



Figure 3038 – General Condition of carpark pavement



Figure 3039 – General Condition of carpark pavement



Figure 3040 – General Condition of carpark pavement



Figure 3041 – General Condition of carpark pavement



Figure 3042 – General Condition of carpark pavement



Figure 3043 – General Condition of carpark pavement



Figure 3044 – General Condition of carpark pavement



Figure 3045 – General Condition of carpark pavement

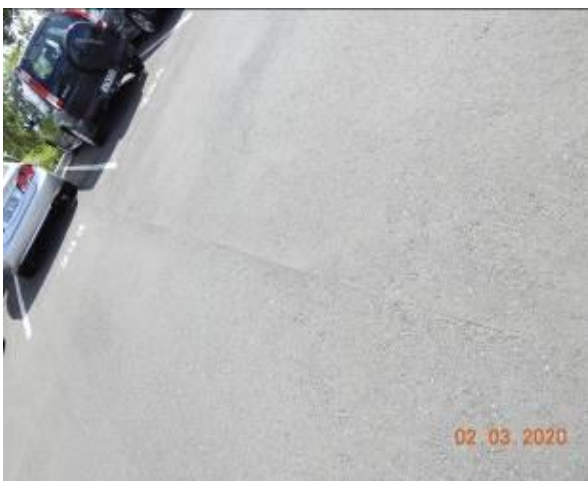


Figure 3046 – Crack propagation through carpark pavement



Figure 3047 – General Condition of carpark pavement



Figure 3048 – Loss of material through carpark pavement



Figure 3049 – General Condition of carpark pavement



Figure 3050 – General Condition of carpark pavement



Figure 3051 – General Condition of carpark pavement



Figure 3052 – General Condition of carpark pavement



Figure 3053 – General Condition of carpark pavement



Figure 3054 – General Condition of carpark pavement



Figure 3055 – General Condition of carpark pavement



Figure 3056 – General Condition of carpark pavement



Figure 3057 – General Condition of carpark pavement



Figure 3058 – Loss of material through carpark pavement



Figure 3059 – General Condition of carpark pavement



Figure 3060 – General Condition of carpark pavement



Figure 3061 – General Condition of lamp post / plantation



Figure 3062 – General Condition of lamp post / plantation



Figure 3063 – General Condition of lamp post / plantation



Figure 3064 – General Condition of lamp post / plantation



Figure 3065 – General Condition of lamp post / plantation



Figure 3066 – General Condition of lamp post / plantation



Figure 3067 – General Condition of lamp post / plantation



Figure 3068 – General Condition of lamp post / plantation



Figure 3069 – General Condition of street sign



Figure 3070 – General Condition of lamp post / plantation



Figure 3071 – General Condition of street sign



Figure 3072 – The following images display condition of carpark 3



Figure 3074 – General Condition of traffic island kerb



Figure 3076 – General Condition of kerb and gutter



Figure 3073 – General Condition of stormwater inlet pit



Figure 3075 – General Condition of traffic island kerb



Figure 3077 – General Condition of stormwater inlet pit



Figure 3078 – General Condition of traffic island kerb



Figure 3079 – General Condition of stormwater inlet pit



Figure 3080 – Crack propagation through stormwater inlet pit



Figure 3081 – General Condition of kerb and gutter



Figure 3082 – General Condition of stormwater inlet pit



Figure 3083 – General Condition of kerb



Figure 3084 – General Condition of kerb



Figure 3085 – General Condition of kerb



Figure 3086 – General Condition of kerb



Figure 3087 – General Condition of kerb



Figure 3088 – General Condition of kerb and gutter



Figure 3089 – General Condition of kerb and gutter



Figure 3090 – General Condition of stormwater inlet pit



Figure 3091 – General Condition of kerb



Figure 3092 – General Condition of kerb



Figure 3093 – General Condition of kerb and gutter



Figure 3094 – Crack propagation through stormwater inlet pit



Figure 3095 – General Condition of kerb and gutter



Figure 3096 – General Condition of kerb and gutter



Figure 3097 – General Condition of kerb



Figure 3098 – General Condition of kerb



Figure 3099 – General Condition of kerb



Figure 3100 – General Condition of kerb and gutter



Figure 3101 – General Condition of kerb and gutter



Figure 3102 – General Condition of stormwater inlet pit



Figure 3103 – General Condition of kerb and gutter



Figure 3104 – Crack propagation through kerb



Figure 3105 – General Condition of kerb



Figure 3106 – General Condition of kerb



Figure 3107 – General Condition of kerb



Figure 3108 – General Condition of kerb



Figure 3109 – General Condition of kerb



Figure 3110 – General Condition of kerb



Figure 3111 – General Condition of kerb



Figure 3112 – General Condition of kerb



Figure 3113 – General Condition of kerb



Figure 3114 – General Condition of kerb



Figure 3115 – General Condition of kerb and gutter



Figure 3116 – General Condition of stormwater inlet pit



Figure 3117 – General Condition of kerb



Figure 3118 – General Condition of kerb



Figure 3119 – General Condition of kerb



Figure 3120 – Displacement through kerb



Figure 3121 – General Condition of kerb



Figure 3122 – Displacement through kerb



Figure 3123 – General Condition of kerb



Figure 3124 – General Condition of kerb



Figure 3125 – General Condition of kerb

Comments

The property Tallawong station – car park 1, is the neighbouring property to our client's site. It was photographed and inspected prior to any construction works on the subject site and was found to be in a reasonable condition. The property serves as a car park.

The road pavement of the car park was in a reasonable condition with evidence of cracking, material loss and patchwork. The kerb and gutter in the car park were also inspected, they were in a reasonable condition with evidence of displacement through the kerb.

The street signs, electricity boxes, lamp posts, plantation and stormwater inlet pits were in a good condition.

Refer to Appendix (H) for photographic records of the above.

Record of Inspections

Address	Inspecting Engineer	Date of Inspection
Aristida Street Council Assets	A.A.&M.H	02/03/20
Conferta Avenue Council Assets	A.A.&M.H	02/03/20
Cudgrong Road Council Assets	A.A.&M.H	02/03/20
Schofields Road Council Assets	A.A.&M.H	02/03/20
Themeda Avenue Council Assets	A.A.&M.H	02/03/20
Car Park P1	A.A.&M.H	02/03/20
Car Park P2	A.A.&M.H	02/03/20
Car Park P3	A.A.&M.H	02/03/20

Prepared by	Reviewed by
N.T.	M.A.

This report serves as a record of the condition of the council assets and the neighbouring properties prior to the commencement of any works proposed at: 1-15 AND 2-12 CONFERTA AVENUE, ROUSE HILL.

DISCLAIMER OF LIABILITY: - No liability shall be accepted on account of failure of the within Report to notify any problems in any area(s) or section(s) of the subject property physically Inaccessible for inspection or to which access for Inspection is denied by or to the Consultant (including but not limited to any area(s) or section(s) so specified by the within Report).

DISCLAIMER OF LIABILITY TO THIRD PARTIES: - This Report is made solely for the use and benefit of Client named on the front of this Report and no liability or responsibility whatsoever is accepted to any third party who may rely on the Report wholly or in part. Any third party acting or relying on this Report whether in whole or in part does so at their own risk.

Please do not hesitate to contact us, should you have any further queries regarding this report.

For and on behalf of

ACE Structural Services Pty Ltd

Per:



Mohammad Haghghat

B.Sc., M.Sc., M.I.E., CPEng, NER
Technical Director