

**1-15 AND 2-12 CONFERTA AVENUE,  
ROUSE HILL NSW 2155  
TALLAWONG STATION PRECINCT SOUTH  
PRE-DILAPIDATION REPORT**

**DEICORP PROJECTS  
(TALLAWONG STATION) PTY LTD**

Job No. 191294.0  
05/07/2021



**ACE**

**ACE Structural Services Pty Ltd**

ABN: 39 642 896 606

Shop 2, 141 Concord Road, North Strathfield NSW 2137

Phone: +61 2 9763 1500

Fax: +61 2 9763 1515

Web: [www.aceeng.com.au](http://www.aceeng.com.au)

Email: [info@aceeng.com.au](mailto:info@aceeng.com.au)

## Contents

<b>Contents .....</b>	<b>2</b>
<b>Introduction .....</b>	<b>3</b>
<b>Description of Assessment Terms .....</b>	<b>4</b>
<b>Classification of Damage in Accordance with AS2870:2011 .....</b>	<b>5</b>
<b>Inspected Areas.....</b>	<b>7</b>
<b>Dilapidation Survey Areas .....</b>	<b>8</b>
<b>Appendix A Aristida Street Council Assets .....</b>	<b>9</b>
<b>Appendix B Conferta Avenue Council Assets .....</b>	<b>25</b>
<b>Appendix C Cudgrong Road Council Assets .....</b>	<b>210</b>
<b>Appendix D Schofields Road Council Assets .....</b>	<b>236</b>
<b>Appendix E Themeda Avenue Council Assets.....</b>	<b>330</b>
<b>Appendix F (Car Park P1) .....</b>	<b>403</b>
<b>Appendix G (Car Park P2).....</b>	<b>441</b>
<b>Appendix H (Car Park P3).....</b>	<b>501</b>
<b>Record of Inspections.....</b>	<b>548</b>
<b>Summary .....</b>	<b>549</b>

## Introduction

### Important Information Regarding the Scope and Limitations of the Inspection and this Report

- I. This report is not an all-encompassing report dealing with the building from every aspect. This report is not a Certificate of Compliance with the requirements of any Act, Regulation, Ordinance or by-law. It is **not** a structural report. Should you require any advice of a structural nature you should contact a structural engineer.
- II. **THIS IS A VISUAL INSPECTION ONLY limited** to those areas and the sections of the property fully accessible to the inspector on the date of inspection. An inspection **does not** include breaking apart, dismantling, removing or moving objects including but not limited to, foliage, mouldings, roof insulation / insulation, floor or wall coverings, sidings, ceilings, floors, furnishings, appliances or personal possessions. The inspector cannot see inside walls, between floors, inside skill iron roofing, behind stored goods in cupboards, other areas that are concealed or obstructed. The inspector **did not** dig, gouge, force or perform any other invasive procedures. Visible timbers cannot be destructively probed or hit without the written permission of the property owner.
- III. This report **does not** and **cannot** make comment upon defects that may have been concealed during the assessment or detection of defects ( including- rising damp and leaks ) which may be subject to the prevailing weather conditions; the presence or absence of timber pests, gas-fittings, common property areas, environmental concerns; the proximity of the property to flight paths, railways, or busy traffic; noise levels; health and safety issues; heritage concerns; security concerns; fire protections; site drainage (apart from surface water drainage); swimming pools and spas (non-structural); detection and identification of illegal building work ; detection and identification of illegal plumbing work; durability of exposed finishes; neighbourhood problems; and document analysis; electrical installations; any matters that are solely regulated by statute; any area(s) or item(s) that **could not** be inspected by the consultant. Accordingly, this report is **not a guarantee** that defects and/ or damage **does not** exist in any inaccessible or partly inaccessible areas or sections of the property. (NB: such matters may upon request be covered under the terms of a special purpose property report.)
- IV. In the event of any controversy or claim arising out of, or relating to this report, it will be settled by arbitration, in accordance with the rules of the Institute of Arbitrators Australia. Any judgments from such arbitration shall be binding upon both parties.

## Description of Assessment Terms

- **Good** Indicates that there are no defects evident and the items described are in good condition for their age.
- **Reasonable** Indicates the item may have minor defects that should be noted but not significant enough to need immediate rectification
- **Poor** Indicates that general maintenance or minor repair may be warranted
- **Defective** Indicates there is a significant fault that should be rectified.



## Classification of Damage in Accordance with AS2870:2011

Table C1 shows the classification of damage with reference to wall in accordance with AS2870:2011

Description of typical damage and required repair	Approximate crack width limit (see Note 1)	Damage category
Hairline cracks	<0.1 mm	0 Negligible
Fine cracks that do not need repair	<1 mm	1 Very slight
Cracks noticeable but easily filled. Doors and windows stick slightly	<5 mm	2 Slight
Cracks can be repaired and possibly a small amount of wall will need to be replaced. Doors and windows stick. Service pipes can fracture. Weather tightness often impaired.	5 mm to 15 mm (or a number of cracks 3 mm or more in one group)	3 Moderate
Extensive repair work involving breaking out and replacing sections of walls, especially over doors and windows. Window frames and door frames distort. Walls lean or bulge noticeably, some loss of bearing in beams. Service pipes disrupted.	15 mm to 25 mm but also depends on number of cracks	4 Severe

### NOTES:

- Where the cracking occurs in easily repaired plasterboard or similar clad-framed partitions, the crack width limits may be increased by 50% for each damage category.
- Crack width is the main factor by which damage to walls is categorized. The width may be supplemented by other factors, including serviceability, in assessing category of damage.
- In assessing the degree of damage, account shall be taken of the location in the building or structure where it occurs, and also of the function of the building or structure.

**Table C2 shows the classification of damage with reference to concrete floors in accordance with AS2870:2011**

Description of typical damage	Approx. crack width limit in floor	Change in offset from a 3 m straightedge centred over defect (see Note 1)	Damage category
Hairline cracks, insignificant movement of slab from level	<0.3 mm	<8 mm	0 Negligible
Fine but noticeable cracks. Slab reasonably level.	<1.0 mm	<10 mm	1 Very slight
Distinct cracks. Slab noticeably curved or changed in level	<2.0 mm	<15 mm	2 Slight
Wide cracks. Obvious curvature or change in level	2 mm to 4 mm	15 mm to 25 mm	3 Moderate
Gaps in slab. Disturbing curvature or change in level	4 mm to 10 mm	>25 mm	4 Severe

**NOTES:**

- 1 The straightedge is centred over the defect, usually, and supported at its ends by equal height spacers. The change in offset is then measured relative to this straightedge, which is not necessarily horizontal.
- 2 Local deviation of slope, from the horizontal or vertical, of more than 1:100 will normally be clearly visible. Overall deviations in excess of 1:150 is undesirable.
- 3 Account should be taken of the past history of damage in order to assess whether it is stable or likely to increase.

## Inspected Areas

### **The Area\*(s) inspected were:**

The footpath, kerb and gutter directly adjacent to the site and roads within **20m** of the main building and within the boundaries of the site were inspected, as well as the neighbouring properties.

### **The Area\*(s) NOT Accessible for any Inspection and the Reason(s) why were:**

No inspection was made of concealed frame timbers or any areas concealed by wall linings/sidings, soil, landscaping, rubbish, floor coverings, furniture, pictures, appliances, stored items, insulation, hollow blocks/pots or any other obstructions to visual inspection.

The internal areas of all neighbouring properties

Further than **20m** from the said sight unless otherwise stated.

### **The Area\*(s) in which Visual Inspection was obstructed and the reason(s) why were:**

Floor coverings and furnishings

Vegetation growth

Stored boxes etc...

\* No comment is made on these concealed areas.



## Dilapidation Survey Areas



❖ The map is taken from the Nearmaps website that holds copyright to this content.



## Appendix A

### Aristida Street Council Assets



❖ The map is taken from the Nearmaps website that holds copyright to this content.





Figure 1 – The following images display condition of Aristida Street Council Assets



Figure 2 – General Condition of footpath pavement



Figure 3 – Crack propagation through footpath pavement



Figure 4 – Crack propagation through footpath pavement



Figure 5 – Crack propagation through footpath pavement



Figure 6 – Crack propagation through footpath pavement



Figure 7 – Crack propagation through footpath pavement



Figure 8 – Crack propagation and loss of material through footpath pavement

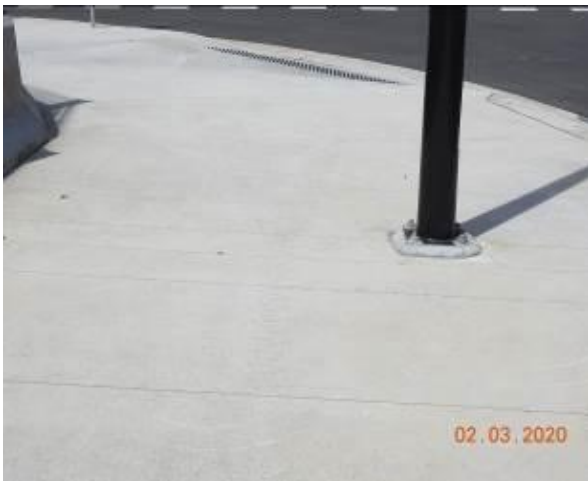


Figure 9 – General Condition of footpath pavement



Figure 10 – General Condition of footpath pavement



Figure 11 – General Condition of footpath pavement



Figure 12 – General Condition of footpath pavement





Figure 13 – General Condition of footpath pavement



Figure 14 – General Condition of footpath pavement



Figure 15 – General Condition of footpath pavement



Figure 16 – General Condition of footpath pavement



Figure 17 – General Condition of kerb and gutter



Figure 18 – General Condition of stormwater inlet pit





Figure 19 – General Condition of kerb and gutter



Figure 20 – Loss of material through kerb and gutter



Figure 21 – Crack propagation through kerb and gutter



Figure 22 – Crack propagation through kerb and gutter



Figure 23 – General Condition of stormwater inlet pit



Figure 24 – General Condition of kerb and gutter



Figure 25 – Crack propagation through kerb and gutter



Figure 26 – Crack propagation through kerb and gutter



Figure 27 – Crack propagation through kerb and gutter



Figure 28 – General Condition of kerb and gutter



Figure 29 – Crack propagation through kerb and gutter



Figure 30 – Crack propagation through kerb and gutter





Figure 31 – Crack propagation through kerb and gutter



Figure 32 – General Condition of stormwater inlet pit



Figure 33 – General Condition of kerb and gutter



Figure 34 – Crack propagation through kerb and gutter



Figure 35 – Crack propagation through kerb and gutter



Figure 36 – Crack propagation through kerb and gutter



Figure 37 – Crack propagation through kerb and gutter



Figure 38 – General Condition of kerb and gutter



Figure 39 – Crack propagation through kerb and gutter



Figure 40 – Crack propagation through kerb and gutter



Figure 41 – Crack propagation and loss of material through kerb and gutter



Figure 42 – General Condition of kerb and gutter





Figure 43 – Crack propagation through kerb



Figure 44 – Crack propagation and loss of material through kerb and gutter



Figure 45 – Crack propagation through kerb



Figure 46 – General Condition of kerb and gutter



Figure 47 – Crack propagation through kerb



Figure 48 – Crack propagation through kerb and gutter



Figure 49 – General Condition of kerb and gutter



Figure 50 – Crack propagation through kerb and gutter



Figure 51 – Crack propagation through kerb and gutter



Figure 52 – General Condition of kerb and gutter



Figure 53 – Crack propagation through kerb and gutter



Figure 54 – Crack propagation and evidence of patchwork through kerb and gutter





Figure 55 – Crack propagation through kerb and gutter



Figure 56 – Crack propagation and evidence of patchwork through kerb and gutter



Figure 57 – General Condition of layback and gutter



Figure 58 – General Condition of stormwater inlet pit



Figure 59 – General Condition of kerb and gutter



Figure 60 – Crack propagation through kerb



Figure 61 – Crack propagation through kerb



Figure 62 – General Condition of kerb



Figure 63 – General Condition of kerb



Figure 64 – General Condition of road surface



Figure 65 – General Condition of road surface



Figure 66 – General Condition of road surface





Figure 67 – General Condition of road surface



Figure 68 – General Condition of road surface



Figure 69 – General Condition of road surface



Figure 70 – General Condition of road surface



Figure 71 – General Condition of road surface



Figure 72 – General Condition of street sign



Figure 73 – General Condition of street sign



Figure 74 – General Condition of lamp post  
Identification No.922703



Figure 75 – General Condition of plantation



Figure 76 – General Condition of lamp post



Figure 77 – General Condition of lamp post  
Identification No.922702



Figure 78 – General Condition of lamp post





Figure 79 – General Condition of lamp post



Figure 80 – General Condition of lamp post  
Identification No.922701



Figure 81 – General Condition of street sign



Figure 82 – General Condition of street sign



Figure 83 – General Condition of lamp post  
Identification No.922668



Figure 84 – General Condition of lamp post

## Comments

The section of Aristida Street which is associated with the subject site was inspected and photographic evidence compiled in order to depict the condition of the council assets along this particular stretch of road prior to the commencement of any work at the subject site.

The road surface of Aristida Street at the time of the inspection was in a good condition, no major defects.

At the same time the kerb, gutter and footpath which accompany the road way were also inspected. At the time of this inspection they were found to be in a good condition. There was evidence of material loss, cracking through the kerb, gutter and footpath, as well as cases of patchwork through the kerb and gutter.

The condition of the lamp posts, plantation, stormwater inlet pits and street signs was also inspected and were determined to be in a reasonable condition.

**Refer to Appendix (A) for photographic records of the above.**



## Appendix B

### Conferta Avenue Council Assets



❖ The map is taken from the Nearmaps website that holds copyright to this content.





Figure 85 – The following images display condition of Conferta Avenue Council Assets



Figure 86 – General Condition of footpath pavement



Figure 87 – General Condition of footpath pavement



Figure 88 – General Condition of footpath pavement



Figure 89 – General Condition of footpath pavement



Figure 90 – General Condition of grass area



Figure 91 – General Condition of service pit



Figure 92 – General Condition of grass area



Figure 93 – General Condition of grass area



Figure 94 – General Condition of grass area



Figure 95 – General Condition of grass area



Figure 96 – General Condition of grass area





Figure 97 – General Condition of grass area



Figure 98 – General Condition of grass area



Figure 99 – General Condition of service pit



Figure 100 – General Condition of grass area



Figure 101 – General Condition of grass area



Figure 102 – General Condition of grass area





Figure 103 – General Condition of grass area



Figure 104 – General Condition of grass area



Figure 105 – General Condition of grass area



Figure 106 – General Condition of grass area



Figure 107 – General Condition of grass area



Figure 108 – General Condition of grass area





Figure 109 – General Condition of service pit



Figure 110 – Loss of material through service pit



Figure 111 – General Condition of grass area



Figure 112 – General Condition of grass area



Figure 113 – General Condition of service pit



Figure 114 – General Condition of grass area





Figure 115 – General Condition of grass area



Figure 116 – General Condition of grass area



Figure 117 – General Condition of grass area



Figure 118 – General Condition of grass area



Figure 119 – General Condition of grass area



Figure 120 – General Condition of grass area





Figure 121 – General Condition of grass area



Figure 122 – General Condition of grass area



Figure 123 – General Condition of grass area



Figure 124 – General Condition of service pit



Figure 125 – General Condition of grass area



Figure 126 – General Condition of grass area





Figure 127 – General Condition of grass area



Figure 128 – General Condition of grass area



Figure 129 – General Condition of grass area



Figure 130 – General Condition of footpath pavement



Figure 131 – General Condition of footpath pavement



Figure 132 – General Condition of footpath pavement



Figure 133 – General Condition of footpath pavement



Figure 134 – General Condition of footpath pavement



Figure 135 – General Condition of footpath pavement



Figure 136 – General Condition of footpath pavement ramp



Figure 137 – General Condition of footpath pavement ramp



Figure 138 – General Condition of footpath pavement





Figure 139 – General Condition of footpath pavement



Figure 140 – General Condition of footpath pavement



Figure 141 – General Condition of footpath pavement



Figure 142 – General Condition of footpath pavement



Figure 143 – Loss of material through footpath pavement



Figure 144 – General Condition of footpath pavement



Figure 145 – Loss of material through footpath pavement



Figure 146 – General Condition of footpath pavement



Figure 147 – General Condition of footpath pavement



Figure 148 – General Condition of footpath pavement



Figure 149 – General Condition of footpath pavement



Figure 150 – General Condition of footpath pavement





Figure 151 – General Condition of footpath pavement



Figure 152 – General Condition of footpath pavement ramp



Figure 153 – General Condition of footpath pavement



Figure 154 – Crack propagation through footpath pavement



Figure 155 – General Condition of footpath pavement



Figure 156 – General Condition of footpath pavement



Figure 157 – Crack propagation through footpath pavement



Figure 158 – General Condition of footpath pavement



Figure 159 – General Condition of service pit



Figure 160 – General Condition of footpath pavement



Figure 161 – General Condition of footpath pavement



Figure 162 – General Condition of footpath pavement





Figure 163 – General Condition of footpath pavement



Figure 164 – General Condition of footpath pavement



Figure 165 – General Condition of footpath pavement



Figure 166 – General Condition of footpath pavement



Figure 167 – General Condition of footpath pavement



Figure 168 – General Condition of footpath pavement



Figure 169 – General Condition of footpath pavement



Figure 170 – General Condition of footpath pavement



Figure 171 – General Condition of footpath pavement



Figure 172 – General Condition of footpath pavement



Figure 173 – General Condition of footpath pavement



Figure 174 – General Condition of footpath pavement





Figure 175 – General Condition of footpath pavement



Figure 176 – General Condition of public bench



Figure 177 – General Condition of footpath pavement



Figure 178 – General Condition of public bench



Figure 179 – General Condition of footpath pavement



Figure 180 – General Condition of footpath pavement



Figure 181 – General Condition of footpath pavement



Figure 182 – General Condition of driveway pavement



Figure 183 – General Condition of driveway pavement



Figure 184 – General Condition of driveway pavement



Figure 185 – General Condition of driveway pavement



Figure 186 – Crack propagation through driveway pavement





Figure 187 – Crack propagation through driveway pavement



Figure 189 – Crack propagation through driveway pavement



Figure 191 – General Condition of driveway pavement



Figure 188 – General Condition of driveway pavement



Figure 190 – General Condition of driveway pavement



Figure 192 – General Condition of driveway pavement



Figure 193 – General Condition of driveway pavement



Figure 194 – Crack propagation through driveway pavement

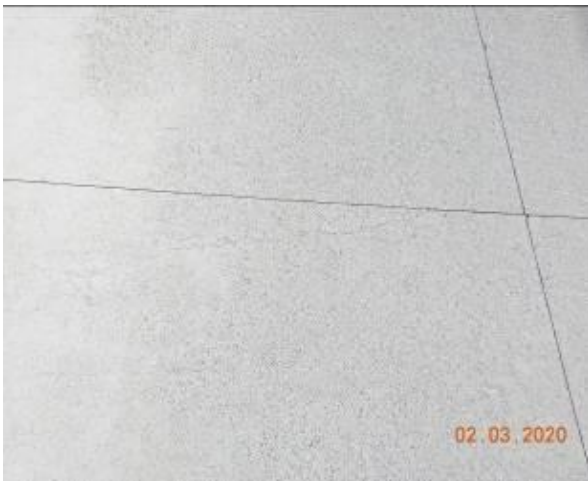


Figure 195 – Crack propagation through driveway pavement



Figure 196 – General Condition of driveway pavement



Figure 197 – General Condition of driveway pavement



Figure 198 – General Condition of driveway pavement





Figure 199 – Crack propagation through driveway pavement



Figure 200 – General Condition of driveway pavement



Figure 201 – General Condition of driveway pavement



Figure 202 – General Condition of driveway pavement



Figure 203 – General Condition of driveway pavement



Figure 204 – General Condition of driveway pavement



Figure 205 – General Condition of traffic island



Figure 206 – General Condition of traffic island



Figure 207 – General Condition of traffic island



Figure 208 – General Condition of footpath pavement



Figure 209 – General Condition of footpath pavement



Figure 210 – General Condition of footpath pavement





Figure 211 – General Condition of footpath pavement



Figure 212 – General Condition of footpath pavement



Figure 213 – General Condition of footpath pavement



Figure 214 – General Condition of footpath pavement



Figure 215 – General Condition of footpath pavement



Figure 216 – Loss of material through footpath pavement



Figure 217 – General Condition of footpath pavement



Figure 218 – General Condition of footpath pavement



Figure 219 – General Condition of footpath pavement



Figure 220 – General Condition of footpath pavement



Figure 221 – General Condition of footpath pavement



Figure 222 – General Condition of footpath pavement





Figure 223 – General Condition of footpath pavement



Figure 224 – General Condition of footpath pavement



Figure 225 – General Condition of footpath pavement



Figure 226 – General Condition of footpath pavement



Figure 227 – General Condition of footpath pavement



Figure 228 – General Condition of public bench



Figure 229 – General Condition of public bench



Figure 230 – General Condition of footpath pavement



Figure 231 – General Condition of footpath pavement



Figure 232 – General Condition of footpath pavement



Figure 233 – General Condition of footpath pavement



Figure 234 – General Condition of footpath pavement





Figure 235 – General Condition of footpath pavement



Figure 236 – General Condition of footpath pavement



Figure 237 – General Condition of footpath pavement



Figure 238 – General Condition of footpath pavement



Figure 239 – General Condition of footpath pavement



Figure 240 – General Condition of service pit



Figure 241 – General Condition of footpath pavement



Figure 242 – General Condition of footpath pavement



Figure 243 – General Condition of service pit



Figure 244 – General Condition of service pit



Figure 245 – General Condition of footpath pavement



Figure 246 – General Condition of footpath pavement





Figure 247 – General Condition of footpath pavement



Figure 248 – General Condition of footpath pavement



Figure 249 – General Condition of footpath pavement



Figure 250 – General Condition of footpath pavement



Figure 251 – General Condition of kerb and gutter



Figure 252 – Crack propagation through kerb and gutter



Figure 253 – General Condition of kerb and gutter



Figure 254 – General Condition of stormwater inlet pit



Figure 255 – General Condition of kerb and gutter



Figure 256 – General Condition of kerb and gutter



Figure 257 – General Condition of kerb and gutter



Figure 258 – Crack propagation through kerb and gutter





Figure 259 – General Condition of kerb and gutter



Figure 260 – Crack propagation through kerb and gutter



Figure 261 – General Condition of kerb and gutter



Figure 262 – Crack propagation through kerb and gutter



Figure 263 – General Condition of kerb and gutter



Figure 264 – Crack propagation through kerb and gutter



Figure 265 – General Condition of kerb and gutter



Figure 266 – Crack propagation through kerb and gutter



Figure 267 – General Condition of kerb and gutter



Figure 268 – Crack propagation through kerb and gutter



Figure 269 – General Condition of kerb and gutter



Figure 270 – General Condition of kerb and gutter





Figure 271 – Crack propagation through kerb and gutter



Figure 272 – General Condition of kerb and gutter



Figure 273 – Crack propagation through kerb and gutter



Figure 274 – General Condition of kerb and gutter



Figure 275 – General Condition of kerb



Figure 276 – General Condition of kerb and gutter



Figure 277 – Crack propagation through kerb and gutter



Figure 278 – Crack propagation through kerb and gutter



Figure 279 – General Condition of stormwater inlet pit



Figure 280 – General Condition of kerb and gutter



Figure 281 – Crack propagation through kerb and gutter



Figure 282 – General Condition of kerb and gutter





Figure 283 – General Condition of kerb and gutter



Figure 284 – General Condition of kerb and gutter



Figure 285 – Crack propagation through kerb and gutter



Figure 286 – General Condition of kerb and gutter



Figure 287 – General Condition of kerb and gutter



Figure 288 – General Condition of kerb and gutter





Figure 289 – Crack propagation through kerb and gutter



Figure 290 – General Condition of kerb and gutter



Figure 291 – General Condition of kerb and gutter



Figure 292 – Crack propagation through kerb and gutter



Figure 293 – General Condition of kerb and gutter



Figure 294 – Crack propagation through kerb and gutter





Figure 295 – General Condition of kerb and gutter



Figure 296 – General Condition of stormwater inlet pit



Figure 297 – General Condition of kerb and gutter



Figure 298 – Crack propagation through kerb and gutter



Figure 299 – General Condition of gutter



Figure 300 – General Condition of gutter



Figure 301 – General Condition of gutter



Figure 302 – General Condition of gutter



Figure 303 – General Condition of kerb and gutter



Figure 304 – Crack propagation through kerb and gutter



Figure 305 – Crack propagation through kerb and gutter



Figure 306 – Crack propagation through kerb and gutter





Figure 307 – General Condition of kerb and gutter



Figure 308 – General Condition of kerb and gutter



Figure 309 – Crack propagation through kerb and gutter



Figure 310 – General Condition of stormwater inlet pit



Figure 311 – General Condition of kerb and gutter



Figure 312 – Crack propagation through kerb and gutter



Figure 313 – General Condition of kerb and gutter



Figure 314 – General Condition of kerb and gutter



Figure 315 – Crack propagation through kerb and gutter



Figure 316 – General Condition of kerb and gutter



Figure 317 – Crack propagation through kerb and gutter



Figure 318 – General Condition of kerb and gutter





Figure 319 – Crack propagation and loss of material through kerb and gutter



Figure 320 – General Condition of kerb and gutter



Figure 321 – General Condition of kerb and gutter



Figure 322 – Loss of material through kerb and gutter



Figure 323 – General Condition of kerb and gutter



Figure 324 – General Condition of kerb and gutter



Figure 325 – General Condition of kerb and gutter



Figure 326 – General Condition of kerb and gutter



Figure 327 – General Condition of kerb and gutter



Figure 328 – Crack propagation through kerb and gutter



Figure 329 – General Condition of stormwater inlet pit



Figure 330 – General Condition of kerb and gutter





Figure 331 – General Condition of kerb and gutter



Figure 332 – Loss of material through kerb and gutter



Figure 333 – General Condition of kerb and gutter



Figure 334 – General Condition of kerb and gutter



Figure 335 – Crack propagation and loss of material through kerb and gutter



Figure 336 – General Condition of kerb and gutter



Figure 337 – Crack propagation through kerb and gutter



Figure 338 – General Condition of kerb and gutter



Figure 339 – Crack propagation through kerb and gutter



Figure 340 – General Condition of kerb and gutter



Figure 341 – Crack propagation through kerb and gutter



Figure 342 – Crack propagation through kerb and gutter





Figure 343 – General Condition of kerb and gutter



Figure 344 – Crack propagation through kerb and gutter



Figure 345 – General Condition of kerb and gutter



Figure 346 – General Condition of kerb and gutter



Figure 347 – Crack propagation through kerb and gutter



Figure 348 – General Condition of kerb and gutter



Figure 349 – General Condition of kerb and gutter



Figure 350 – General Condition of layback and gutter



Figure 351 – General Condition of kerb and gutter



Figure 352 – General Condition of stormwater inlet pit



Figure 353 – Crack propagation through kerb and gutter



Figure 354 – Crack propagation through stormwater inlet pit





Figure 355 – Crack propagation through stormwater inlet pit



Figure 356 – Crack propagation through stormwater inlet pit



Figure 357 – General Condition of kerb and gutter



Figure 358 – General Condition of kerb and gutter



Figure 359 – Crack propagation through kerb and gutter



Figure 360 – General Condition of kerb and gutter



Figure 361 – General Condition of kerb and gutter



Figure 362 – Crack propagation through kerb and gutter



Figure 363 – General Condition of kerb and gutter



Figure 364 – Crack propagation through kerb and gutter



Figure 365 – General Condition of kerb and gutter



Figure 366 – General Condition of kerb and gutter





Figure 367 – General condition of kerb and gutter



Figure 368 – Crack propagation through kerb and gutter



Figure 369 – General Condition of kerb and gutter



Figure 370 – Loss of material and Evidence of patchwork through kerb and gutter



Figure 371 – General Condition of kerb and gutter



Figure 372 – Crack propagation through kerb and gutter



Figure 373 – General Condition of kerb and gutter



Figure 374 – Crack propagation through kerb



Figure 375 – Loss of material through kerb



Figure 376 – General Condition of kerb and gutter



Figure 377 – Crack propagation through kerb and gutter



Figure 378 – General Condition of kerb and gutter





Figure 379 – Crack propagation through kerb and gutter



Figure 380 – General Condition of kerb and gutter



Figure 381 – General Condition of kerb and gutter



Figure 382 – Crack propagation through kerb and gutter



Figure 383 – General Condition of stormwater inlet pit



Figure 384 – Crack propagation through stormwater inlet pit



Figure 385 – Crack propagation through stormwater inlet pit



Figure 386 – Crack propagation through stormwater inlet pit



Figure 387 – Crack propagation through stormwater inlet pit



Figure 388 – General Condition of kerb and gutter



Figure 389 – General Condition of kerb and gutter



Figure 390 – General Condition of kerb and gutter





Figure 391 – General Condition of kerb and gutter



Figure 392 – Loss of material through kerb



Figure 393 – General Condition of kerb and gutter



Figure 394 – Crack propagation through kerb and gutter



Figure 395 – Crack propagation through kerb and gutter



Figure 396 – General Condition of kerb and gutter



Figure 397 – Crack propagation through kerb and gutter



Figure 398 – General Condition of kerb and gutter



Figure 399 – General Condition of kerb and gutter



Figure 400 – Crack propagation through kerb and gutter



Figure 401 – Crack propagation through kerb and gutter



Figure 402 – General Condition of kerb and gutter





Figure 403 – Crack propagation through kerb and gutter



Figure 404 – General Condition of kerb and gutter



Figure 405 – General Condition of kerb and gutter



Figure 406 – Crack propagation through kerb and gutter



Figure 407 – General Condition of kerb and gutter



Figure 408 – Crack propagation through kerb and gutter



Figure 409 – General Condition of kerb and gutter



Figure 410 – Crack propagation through kerb and gutter



Figure 411 – General Condition of kerb and gutter



Figure 412 – General Condition of kerb and gutter



Figure 413 – Crack propagation through kerb and gutter



Figure 414 – General Condition of stormwater inlet pit





Figure 415 – General Condition of kerb and gutter



Figure 416 – Crack propagation through kerb and gutter



Figure 417 – Crack propagation through kerb and gutter



Figure 418 – General Condition of kerb and gutter



Figure 419 – General Condition of kerb and gutter



Figure 420 – Crack propagation through kerb and gutter



Figure 421 – General Condition of kerb and gutter



Figure 422 – Crack propagation through kerb and gutter



Figure 423 – General Condition of kerb and gutter



Figure 424 – Crack propagation through kerb and gutter



Figure 425 – General Condition of kerb and gutter



Figure 426 – General Condition of kerb and gutter





Figure 427 – General Condition of kerb and gutter



Figure 428 – Loss of material through kerb and gutter



Figure 429 – General Condition of kerb and gutter



Figure 430 – Crack propagation through kerb and gutter



Figure 431 – Loss of material through kerb



Figure 432 – General Condition of kerb and gutter



Figure 433 – General Condition of kerb and gutter



Figure 434 – Crack propagation through kerb and gutter



Figure 435 – General Condition of kerb and gutter



Figure 436 – General Condition of kerb and gutter



Figure 437 – Crack propagation through kerb and gutter



Figure 438 – General Condition of kerb and gutter





Figure 439 – Crack propagation through kerb and gutter



Figure 440 – General Condition of kerb and gutter



Figure 441 – General Condition of stormwater inlet pit



Figure 442 – Crack propagation through stormwater inlet pit



Figure 443 – Crack propagation through stormwater inlet pit



Figure 444 – Crack propagation through stormwater inlet pit



Figure 445 – General Condition of kerb and gutter



Figure 446 – Crack propagation through kerb and gutter



Figure 447 – General Condition of kerb and gutter



Figure 448 – General Condition of kerb and gutter



Figure 449 – General Condition of kerb and gutter



Figure 450 – Crack propagation through kerb and gutter





Figure 451 – General Condition of kerb and gutter



Figure 452 – Crack propagation through kerb and gutter



Figure 453 – General Condition of kerb and gutter



Figure 454 – Crack propagation through kerb and gutter



Figure 455 – General Condition of kerb and gutter



Figure 456 – Crack propagation through kerb and gutter



Figure 457 – General Condition of kerb and gutter



Figure 458 – Crack propagation through kerb and gutter



Figure 459 – General Condition of kerb and gutter



Figure 460 – Crack propagation through kerb and gutter



Figure 461 – General Condition of kerb and gutter



Figure 462 – Crack propagation through kerb and gutter





Figure 463 – General Condition of kerb and gutter



Figure 464 – Crack propagation through kerb and gutter



Figure 465 – General Condition of kerb and gutter



Figure 466 – Crack propagation through kerb and gutter



Figure 467 – Crack propagation through kerb and gutter



Figure 468 – General Condition of kerb and gutter



Figure 469 – General Condition of kerb and gutter



Figure 470 – General Condition of kerb and gutter



Figure 471 – General Condition of kerb and gutter



Figure 472 – Crack propagation through kerb and gutter



Figure 473 – General Condition of stormwater inlet pit



Figure 474 – Crack propagation through stormwater inlet pit





Figure 475 – Crack propagation through stormwater inlet pit



Figure 476 – Crack propagation through stormwater inlet pit



Figure 477 – General Condition of kerb and gutter



Figure 478 – Crack propagation through kerb and gutter



Figure 479 – General Condition of kerb and gutter



Figure 480 – Crack propagation through kerb and gutter



Figure 481 – General Condition of kerb and gutter



Figure 482 – General Condition of kerb and gutter



Figure 483 – General Condition of kerb and gutter



Figure 484 – Crack propagation through kerb and gutter



Figure 485 – General Condition of kerb and gutter



Figure 486 – Crack propagation through kerb and gutter





Figure 487 – General Condition of kerb and gutter



Figure 488 – General Condition of stormwater inlet pit



Figure 489 – General Condition of stormwater inlet pit



Figure 490 – General Condition of kerb and gutter



Figure 491 – Crack propagation through kerb



Figure 492 – General Condition of layback and gutter



Figure 493 – General Condition of layback and gutter



Figure 494 – General Condition of kerb and gutter



Figure 495 – Crack propagation through kerb and gutter



Figure 496 – General Condition of kerb and gutter



Figure 497 – Crack propagation through kerb and gutter



Figure 498 – General Condition of road surface





Figure 499 – General Condition of road surface



Figure 500 – General Condition of road surface



Figure 501 – General Condition of road surface



Figure 502 – General Condition of traffic island



Figure 503 – General Condition of traffic island



Figure 504 – General Condition of traffic island



Figure 505 – General Condition of traffic island



Figure 506 – General Condition of traffic island



Figure 507 – General Condition of traffic island



Figure 508 – General Condition of traffic island



Figure 509 – General Condition of traffic island



Figure 510 – General Condition of traffic island





Figure 511 – General Condition of traffic island



Figure 512 – General Condition of traffic island



Figure 513 – General Condition of traffic island



Figure 514 – Crack propagation through traffic island kerb



Figure 515 – General Condition of traffic island



Figure 516 – General Condition of road surface



Figure 517 – General Condition of road surface



Figure 518 – General Condition of road surface



Figure 519 – General Condition of road surface



Figure 520 – General Condition of road surface



Figure 521 – General Condition of road surface



Figure 522 – General Condition of road surface





Figure 523 – General Condition of road surface



Figure 524 – General Condition of road surface



Figure 525 – General Condition of road surface



Figure 526 – General Condition of road surface



Figure 527 – Loss of material through road surface



Figure 528 – General Condition of road surface



Figure 529 – General Condition of road surface



Figure 530 – General Condition of road surface



Figure 531 – General Condition of road surface



Figure 532 – General Condition of road surface



Figure 533 – General Condition of road surface



Figure 534 – General Condition of road surface





Figure 535 – General Condition of road surface



Figure 536 – General Condition of road surface



Figure 537 – General Condition of road surface



Figure 538 – General Condition of road surface



Figure 539 – General Condition of road surface



Figure 540 – General Condition of road surface



Figure 541 – General Condition of road surface



Figure 542 – General Condition of road surface



Figure 543 – General Condition of road surface



Figure 544 – General Condition of road surface



Figure 545 – General Condition of road surface



Figure 546 – General Condition of road surface





Figure 547 – General Condition of road surface



Figure 548 – General Condition of road surface



Figure 549 – General Condition of road surface



Figure 550 – General Condition of road surface



Figure 551 – General Condition of road surface



Figure 552 – General Condition of road surface



Figure 553 – General Condition of road surface



Figure 554 – General Condition of road surface



Figure 555 – General Condition of road surface



Figure 556 – General Condition of road surface



Figure 557 – General Condition of road surface



Figure 558 – General Condition of road surface





Figure 559 – General Condition of road surface



Figure 560 – General Condition of road surface



Figure 561 – General Condition of road surface



Figure 562 – General Condition of road surface



Figure 563 – General Condition of road surface



Figure 564 – General Condition of road surface



Figure 565 – General Condition of road surface



Figure 566 – General Condition of road surface



Figure 567 – General Condition of road surface



Figure 568 – General Condition of road surface



Figure 569 – General Condition of road surface



Figure 570 – General Condition of road surface





Figure 571 – General Condition of road surface



Figure 572 – General Condition of road surface



Figure 573 – General Condition of road surface



Figure 574 – General Condition of road surface



Figure 575 – General Condition of road surface



Figure 576 – General Condition of road surface



Figure 577 – General Condition of road surface



Figure 578 – General Condition of road surface



Figure 579 – General Condition of road surface



Figure 580 – General Condition of road surface



Figure 581 – General Condition of road surface



Figure 582 – General Condition of road surface





Figure 583 – General Condition of road surface



Figure 584 – General Condition of road surface



Figure 585 – Loss of material through road surface



Figure 586 – General Condition of road surface



Figure 587 – General Condition of road surface



Figure 588 – General Condition of road surface



Figure 589 – General Condition of road surface



Figure 590 – General Condition of road surface



Figure 591 – General Condition of road surface



Figure 592 – General Condition of road surface



Figure 593 – General Condition of service pit



Figure 594 – General Condition of service pit





Figure 595 – Loss of material through service pit



Figure 596 – Loss of material through service pit



Figure 597 – Loss of material through service pit



Figure 598 – Crack propagation through service pit



Figure 599 – General Condition of service pit



Figure 600 – General Condition of service pit



Figure 601 – Crack propagation through service pit



Figure 602 – Loss of material through service pit



Figure 603 – Loss of material through service pit



Figure 604 – General Condition of road surface



Figure 605 – General Condition of road surface



Figure 606 – General Condition of road surface





Figure 607 – General Condition of service pit



Figure 608 – Crack propagation through service pit



Figure 609 – Loss of material through service pit



Figure 610 – Loss of material through service pit



Figure 611 – General Condition of service pit



Figure 612 – General Condition of service pit



Figure 613 – General Condition of road surface



Figure 614 – General Condition of road surface



Figure 615 – General Condition of road surface



Figure 616 – General Condition of road surface



Figure 617 – General Condition of road surface



Figure 618 – General Condition of road surface





Figure 619 – General Condition of road surface



Figure 620 – General Condition of road surface



Figure 621 – General Condition of road surface



Figure 622 – General Condition of road surface



Figure 623 – General Condition of road surface



Figure 624 – General Condition of road surface



Figure 625 – General Condition of road surface



Figure 626 – General Condition of road surface



Figure 627 – General Condition of road surface



Figure 628 – General Condition of road surface



Figure 629 – General Condition of road surface



Figure 630 – General Condition of road surface





Figure 631 – General Condition of road surface



Figure 632 – General Condition of road surface



Figure 633 – General Condition of road surface



Figure 634 – General Condition of road surface



Figure 635 – General Condition of road surface



Figure 636 – General Condition of road surface



Figure 637 – General Condition of road surface



Figure 638 – General Condition of road surface



Figure 639 – Evidence of patchwork through road surface



Figure 640 – General Condition of road surface



Figure 641 – Evidence of patchwork through road surface



Figure 642 – General Condition of road surface





Figure 643 – General Condition of road surface



Figure 644 – General Condition of road surface



Figure 645 – General Condition of road surface



Figure 646 – General Condition of road surface



Figure 647 – General Condition of road surface



Figure 648 – General Condition of road surface



Figure 649 – General Condition of road surface



Figure 650 – General Condition of road surface



Figure 651 – General Condition of road surface



Figure 652 – General Condition of road surface



Figure 653 – General Condition of road surface



Figure 654 – General Condition of road surface





Figure 655 – General Condition of road surface



Figure 656 – General Condition of road surface



Figure 657 – General Condition of road surface



Figure 658 – General Condition of road surface



Figure 659 – General Condition of road surface



Figure 660 – General Condition of road surface



Figure 661 – General Condition of road surface



Figure 662 – General Condition of road surface



Figure 663 – General Condition of road surface



Figure 664 – General Condition of road surface



Figure 665 – General Condition of road surface



Figure 666 – General Condition of road surface





Figure 667 – General Condition of road surface



Figure 668 – General Condition of road surface



Figure 669 – General Condition of road surface



Figure 670 – General Condition of road surface



Figure 671 – General Condition of road surface



Figure 672 – General Condition of road surface



Figure 673 – General Condition of road surface



Figure 674 – General Condition of road surface



Figure 675 – General Condition of road surface



Figure 676 – General Condition of road surface



Figure 677 – General Condition of road surface



Figure 678 – General Condition of road surface





Figure 679 – General Condition of road surface



Figure 680 – General Condition of road surface



Figure 681 – General Condition of road surface



Figure 682 – Crack propagation through road surface

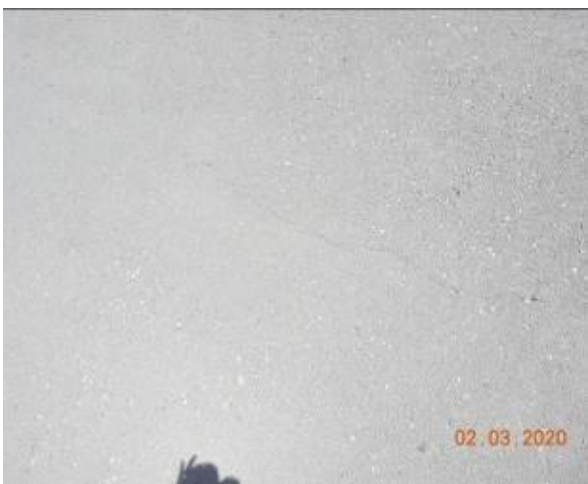


Figure 683 – Crack propagation through road surface



Figure 684 – General Condition of road surface



Figure 685 – General Condition of road surface



Figure 686 – General Condition of road surface



Figure 687 – General Condition of road surface



Figure 688 – General Condition of road surface



Figure 689 – General Condition of road surface



Figure 690 – General Condition of road surface





Figure 691 – General Condition of road surface



Figure 692 – General Condition of road surface



Figure 693 – General Condition of road surface



Figure 694 – General Condition of road surface



Figure 695 – General Condition of road surface



Figure 696 – General Condition of road surface



Figure 697 – General Condition of road surface



Figure 698 – General Condition of road surface



Figure 699 – General Condition of road surface



Figure 700 – General Condition of road surface



Figure 701 – General Condition of road surface



Figure 702 – General Condition of road surface





Figure 703 – General Condition of road surface



Figure 704 – General Condition of road surface



Figure 705 – General Condition of road surface



Figure 706 – General Condition of road surface



Figure 707 – General Condition of road surface



Figure 708 – General Condition of road surface



Figure 709 – General Condition of road surface



Figure 710 – General Condition of road surface



Figure 711 – General Condition of road surface



Figure 712 – General Condition of road surface



Figure 713 – General Condition of road surface



Figure 714 – General Condition of road surface





Figure 715 – General Condition of road surface



Figure 716 – General Condition of road surface



Figure 717 – General Condition of road surface



Figure 718 – General Condition of road surface



Figure 719 – General Condition of road surface



Figure 720 – General Condition of road surface



Figure 721 – General Condition of road surface



Figure 722 – General Condition of road surface



Figure 723 – General Condition of road surface



Figure 724 – General Condition of road surface



Figure 725 – General Condition of road surface



Figure 726 – General Condition of road surface





Figure 727 – Crack propagation through road surface



Figure 728 – General Condition of road surface



Figure 729 – General Condition of road surface



Figure 730 – General Condition of road surface



Figure 731 – General Condition of road surface



Figure 732 – General Condition of road surface



Figure 733 – General Condition of road surface



Figure 734 – General Condition of road surface



Figure 735 – General Condition of traffic island



Figure 736 – General Condition of traffic island



Figure 737 – Crack propagation through traffic island



Figure 738 – General Condition of traffic island





Figure 739 – General Condition of stormwater inlet pit



Figure 740 – General Condition of traffic island



Figure 741 – General Condition of traffic island



Figure 742 – Crack propagation through traffic island



Figure 743 – General Condition of traffic island



Figure 744 – General Condition of traffic island



Figure 745 – Loss of material through traffic island kerb



Figure 746 – General Condition of traffic island



Figure 747 – General Condition of traffic island



Figure 748 – General Condition of traffic island



Figure 749 – General Condition of traffic island



Figure 750 – General Condition of traffic island





Figure 751 – General Condition of traffic island



Figure 752 – General Condition of traffic island



Figure 753 – General Condition of traffic island



Figure 754 – Loss of material through traffic island kerb



Figure 755 – General Condition of traffic island



Figure 756 – Loss of material through traffic island



Figure 757 – General Condition of traffic island



Figure 758 – Loss of material through traffic island



Figure 759 – General Condition of footpath pavement



Figure 760 – General Condition of footpath pavement



Figure 761 – General Condition of footpath pavement



Figure 762 – General Condition of footpath pavement





Figure 763 – General Condition of footpath pavement



Figure 764 – Crack propagation through footpath pavement



Figure 765 – General Condition of footpath pavement



Figure 766 – General Condition of service pit



Figure 767 – General Condition of footpath pavement



Figure 768 – Loss of material through service pit



Figure 769 – Crack propagation through footpath pavement



Figure 770 – Crack propagation through footpath pavement



Figure 771 – Crack propagation through footpath pavement



Figure 772 – General Condition of footpath pavement

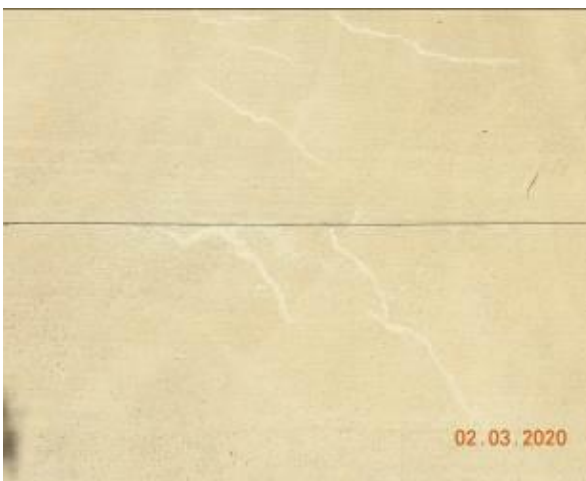


Figure 773 – Crack propagation through footpath pavement

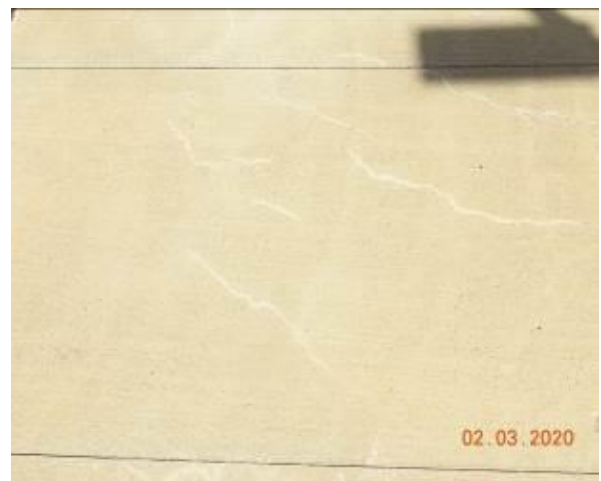


Figure 774 – Crack propagation through footpath pavement





Figure 775 – Crack propagation through footpath pavement



Figure 776 – General Condition of footpath pavement



Figure 777 – Crack propagation through footpath pavement



Figure 778 – Crack propagation through footpath pavement



Figure 779 – General Condition of footpath pavement



Figure 780 – General Condition of footpath pavement



Figure 781 – Crack propagation through footpath pavement



Figure 782 – General Condition of footpath pavement



Figure 783 – General Condition of footpath pavement



Figure 784 – Crack propagation through footpath pavement



Figure 785 – General Condition of footpath pavement



Figure 786 – Crack propagation through footpath pavement





Figure 787 – General Condition of footpath pavement



Figure 788 – Crack propagation through footpath pavement



Figure 789 – Crack propagation through footpath pavement



Figure 790 – General Condition of footpath pavement



Figure 791 – Crack propagation through footpath pavement



Figure 792 – Crack propagation through footpath pavement



Figure 793 – General Condition of footpath pavement



Figure 794 – General Condition of footpath pavement



Figure 795 – Crack propagation through footpath pavement



Figure 796 – Crack propagation through footpath pavement



Figure 797 – General Condition of footpath pavement



Figure 798 – General Condition of footpath pavement





Figure 799 – General Condition of footpath pavement



Figure 800 – General Condition of footpath pavement



Figure 801 – General Condition of footpath pavement



Figure 802 – General Condition of footpath pavement



Figure 803 – General Condition of footpath pavement



Figure 804 – General Condition of footpath pavement





Figure 805 – General Condition of footpath pavement



Figure 806 – Crack propagation through footpath pavement



Figure 807 – General Condition of footpath pavement



Figure 808 – General Condition of footpath pavement



Figure 809 – General Condition of footpath pavement



Figure 810 – Crack propagation through footpath pavement





Figure 811 – General Condition of footpath pavement



Figure 812 – General Condition of footpath pavement



Figure 813 – General Condition of footpath pavement



Figure 814 – General Condition of footpath pavement



Figure 815 – General Condition of footpath pavement



Figure 816 – General Condition of footpath pavement





Figure 817 – General Condition of footpath pavement



Figure 818 – General Condition of footpath pavement



Figure 819 – General Condition of footpath pavement



Figure 820 – General Condition of footpath pavement



Figure 821 – General Condition of footpath pavement



Figure 822 – General Condition of footpath pavement





Figure 823 – General Condition of footpath pavement



Figure 824 – General Condition of service pit



Figure 825 – Loss of material through service pit



Figure 826 – Crack propagation through service pit



Figure 827 – General Condition of footpath pavement



Figure 828 – General Condition of footpath pavement



Figure 829 – Crack propagation through footpath pavement



Figure 830 – General Condition of service pit



Figure 831 – General Condition of service pit



Figure 832 – General Condition of service pit



Figure 833 – Loss of material through service pit



Figure 834 – Loss of material through service pit





Figure 835 – General Condition of service pit



Figure 836 – General Condition of footpath pavement



Figure 837 – General Condition of footpath pavement



Figure 838 – General Condition of service pit



Figure 839 – General Condition of footpath pavement



Figure 840 – General Condition of footpath pavement



Figure 841 – General Condition of footpath pavement



Figure 842 – General Condition of service pit



Figure 843 – General Condition of service pit



Figure 844 – General Condition of footpath pavement



Figure 845 – General Condition of footpath pavement



Figure 846 – Crack propagation through footpath pavement





Figure 847 – General Condition of footpath pavement



Figure 848 – General Condition of footpath pavement



Figure 849 – Crack propagation through footpath pavement



Figure 850 – General Condition of footpath pavement



Figure 851 – General Condition of footpath pavement



Figure 852 – General Condition of footpath pavement



Figure 853 – General Condition of footpath pavement



Figure 854 – General Condition of footpath pavement



Figure 855 – Crack propagation through footpath pavement



Figure 856 – General Condition of footpath pavement



Figure 857 – General Condition of footpath pavement



Figure 858 – General Condition of footpath pavement





Figure 859 – General Condition of footpath pavement



Figure 860 – General Condition of footpath pavement



Figure 861 – General Condition of footpath pavement



Figure 862 – General Condition of footpath pavement



Figure 863 – General Condition of footpath pavement



Figure 864 – General Condition of footpath pavement



Figure 865 – General Condition of service pit



Figure 866 – General Condition of footpath pavement



Figure 867 – General Condition of footpath pavement



Figure 868 – General Condition of footpath pavement



Figure 869 – General Condition of footpath pavement



Figure 870 – General Condition of footpath pavement





Figure 871 – General Condition of driveway ramp



Figure 872 – General Condition of driveway ramp



Figure 873 – Crack propagation through driveway ramp



Figure 874 – Crack propagation through driveway ramp



Figure 875 – General Condition of driveway ramp



Figure 876 – General Condition of driveway ramp



Figure 877 – Crack propagation through driveway ramp



Figure 878 – General Condition of driveway ramp



Figure 879 – Crack propagation through driveway ramp



Figure 880 – General Condition of driveway ramp



Figure 881 – General Condition of driveway ramp



Figure 882 – General Condition of footpath pavement





Figure 883 – General Condition of footpath pavement



Figure 884 – General Condition of footpath pavement



Figure 885 – Loss of material through footpath pavement



Figure 886 – General Condition of nature strip



Figure 887 – General Condition of nature strip



Figure 888 – General Condition of nature strip



Figure 889 – General Condition of nature strip



Figure 890 – General Condition of nature strip



Figure 891 – General Condition of nature strip



Figure 892 – General Condition of nature strip



Figure 893 – General Condition of nature strip



Figure 894 – General Condition of nature strip





Figure 895 – General Condition of nature strip



Figure 896 – General Condition of nature strip



Figure 897 – General Condition of nature strip



Figure 898 – General Condition of service pit



Figure 899 – General Condition of nature strip



Figure 900 – General Condition of nature strip





Figure 901 – General Condition of nature strip



Figure 902 – General Condition of nature strip



Figure 903 – General Condition of nature strip



Figure 904 – General Condition of nature strip



Figure 905 – General Condition of nature strip



Figure 906 – General Condition of nature strip





Figure 907 – General Condition of nature strip



Figure 908 – General Condition of nature strip



Figure 909 – General Condition of nature strip



Figure 910 – General Condition of nature strip



Figure 911 – General Condition of nature strip



Figure 912 – General Condition of nature strip





Figure 913 – General Condition of nature strip



Figure 914 – General Condition of nature strip



Figure 915 – General Condition of nature strip



Figure 916 – General Condition of nature strip



Figure 917 – General Condition of nature strip



Figure 918 – General Condition of service pit





Figure 919 – Crack propagation through service pit



Figure 920 – Crack propagation through service pit



Figure 921 – General Condition of nature strip



Figure 922 – General Condition of nature strip



Figure 923 – General Condition of footpath pavement



Figure 924 – General Condition of footpath pavement



Figure 925 – General Condition of footpath pavement



Figure 926 – General Condition of footpath pavement



Figure 927 – General Condition of footpath pavement



Figure 928 – General Condition of footpath pavement



Figure 929 – General Condition of kerb and gutter



Figure 930 – General Condition of kerb and gutter





Figure 931 – General Condition of kerb and gutter



Figure 932 – Crack propagation and loss of material through kerb and gutter



Figure 933 – General Condition of kerb and gutter



Figure 934 – General Condition of kerb and gutter



Figure 935 – General Condition of kerb and gutter

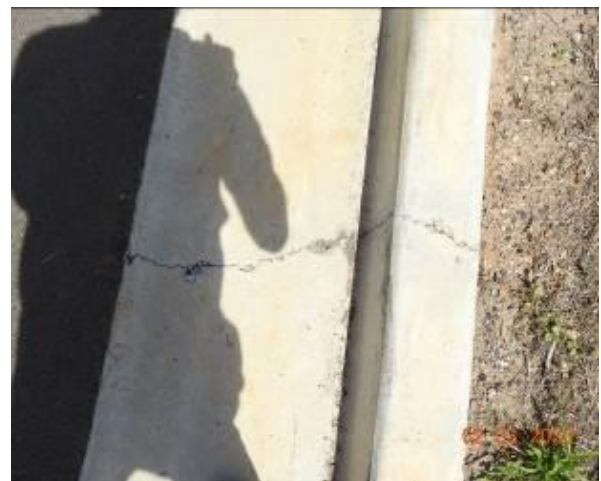


Figure 936 – Crack propagation through kerb and gutter



Figure 937 – Loss of material through kerb



Figure 938 – General Condition of stormwater inlet pit



Figure 939 – General Condition of kerb and gutter



Figure 940 – Crack propagation and loss of material through kerb and gutter



Figure 941 – General Condition of kerb and gutter



Figure 942 – Crack propagation and loss of material through kerb and gutter





Figure 943 – General Condition of kerb and gutter



Figure 944 – Loss of material through gutter



Figure 945 – General Condition of kerb and gutter



Figure 946 – Crack propagation and loss of material through kerb and gutter



Figure 947 – General Condition of stormwater inlet pit



Figure 948 – Crack propagation through stormwater inlet pit



Figure 949 – General Condition of kerb and gutter



Figure 950 – Crack propagation through kerb and gutter



Figure 951 – General Condition of kerb and gutter



Figure 952 – General Condition of kerb and gutter



Figure 953 – General Condition of kerb and gutter



Figure 954 – Crack propagation through kerb and gutter





Figure 955 – General Condition of kerb and gutter



Figure 956 – Crack propagation through kerb and gutter



Figure 957 – General Condition of kerb and gutter



Figure 958 – General Condition of kerb and gutter



Figure 959 – General Condition of kerb and gutter



Figure 960 – Crack propagation through kerb and gutter



Figure 961 – General Condition of kerb and gutter



Figure 962 – General Condition of kerb and gutter



Figure 963 – General Condition of kerb and gutter



Figure 964 – Crack propagation through kerb and gutter



Figure 965 – General Condition of kerb and gutter



Figure 966 – Crack propagation through gutter





Figure 967 – General Condition of kerb and gutter



Figure 968 – General Condition of kerb and gutter



Figure 969 – General Condition of kerb and gutter



Figure 970 – Loss of material through kerb and gutter



Figure 971 – General Condition of stormwater inlet pit



Figure 972 – General Condition of kerb and gutter



Figure 973 – Crack propagation through kerb and gutter



Figure 974 – General Condition of kerb and gutter



Figure 975 – General Condition of kerb and gutter



Figure 976 – General Condition of kerb and gutter



Figure 977 – Crack propagation through kerb and gutter



Figure 978 – General Condition of kerb and gutter





Figure 979 – Crack propagation through kerb and gutter



Figure 980 – General Condition of kerb and gutter



Figure 981 – General Condition of kerb and gutter



Figure 982 – General Condition of kerb and gutter



Figure 983 – General Condition of kerb and gutter



Figure 984 – Crack propagation through kerb and gutter



Figure 985 – General Condition of kerb and gutter



Figure 986 – General Condition of kerb and gutter



Figure 987 – General Condition of kerb and gutter



Figure 988 – General Condition of kerb and gutter



Figure 989 – General Condition of kerb and gutter



Figure 990 – General Condition of kerb and gutter





Figure 991 – General Condition of kerb and gutter



Figure 992 – Crack propagation and loss of material through kerb and gutter



Figure 993 – General Condition of stormwater inlet pit



Figure 994 – Crack propagation and Evidence of patchwork through stormwater inlet pit



Figure 995 – Crack propagation through stormwater inlet pit



Figure 996 – General Condition of kerb and gutter



Figure 997 – General Condition of kerb and gutter



Figure 998 – General Condition of kerb and gutter



Figure 999 – Crack propagation through kerb and gutter



Figure 1000 – General Condition of kerb and gutter

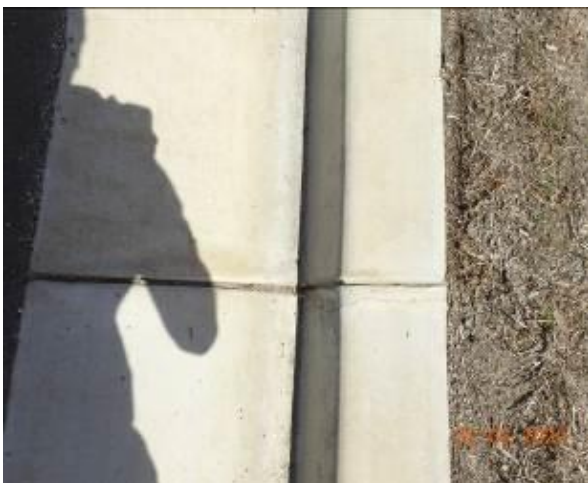


Figure 1001 – Crack propagation through kerb and gutter



Figure 1002 – Crack propagation through kerb and gutter





Figure 1003 – General Condition of kerb and gutter



Figure 1004 – Crack propagation through kerb and gutter



Figure 1005 – General Condition of kerb and gutter



Figure 1006 – Loss of material through kerb



Figure 1007 – General Condition of kerb and gutter



Figure 1008 – Crack propagation through kerb



Figure 1009 – Crack propagation through kerb



Figure 1010 – Crack propagation through kerb



Figure 1011 – Crack propagation through kerb and gutter



Figure 1012 – General Condition of kerb and gutter



Figure 1013 – Crack propagation through kerb and gutter



Figure 1014 – General Condition of kerb and gutter





Figure 1015 – Crack propagation through kerb and gutter



Figure 1016 – General Condition of kerb and gutter



Figure 1017 – Crack propagation through kerb and gutter



Figure 1018 – General Condition of kerb and gutter



Figure 1019 – General Condition of kerb and gutter



Figure 1020 – Crack propagation through kerb and gutter



Figure 1021 – General Condition of kerb and gutter



Figure 1022 – Crack propagation through kerb and gutter



Figure 1023 – General Condition of kerb and gutter



Figure 1024 – Loss of material through kerb



Figure 1025 – General Condition of kerb and gutter



Figure 1026 – Crack propagation through kerb and gutter





Figure 1027 – General Condition of kerb and gutter



Figure 1028 – Loss of material through kerb and gutter



Figure 1029 – General Condition of stormwater inlet pit



Figure 1030 – General Condition of kerb and gutter



Figure 1031 – General Condition of layback and gutter

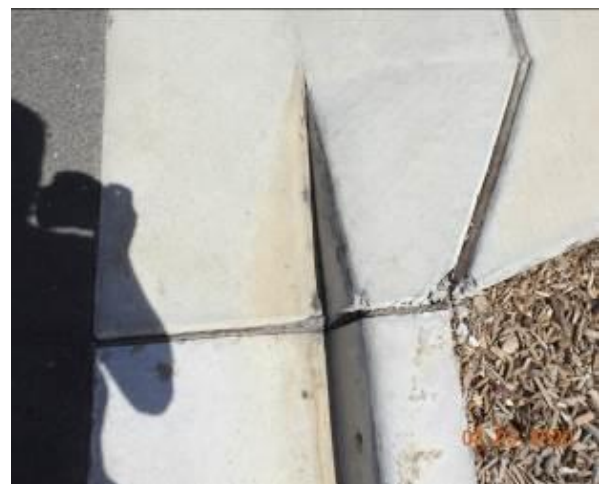


Figure 1032 – Loss of material through kerb and gutter



Figure 1033 – General Condition of gutter



Figure 1034 – Crack propagation through gutter



Figure 1035 – General Condition of gutter



Figure 1036 – Crack propagation through kerb and gutter



Figure 1037 – General Condition of kerb and gutter



Figure 1038 – Crack propagation through kerb and gutter





Figure 1039 – Crack propagation through kerb and gutter



Figure 1040 – General Condition of kerb and gutter



Figure 1041 – General Condition of kerb and gutter



Figure 1042 – General Condition of kerb and gutter



Figure 1043 – Crack propagation through kerb and gutter



Figure 1044 – General Condition of kerb and gutter



Figure 1045 – Crack propagation through kerb and gutter



Figure 1046 – General Condition of kerb and gutter



Figure 1047 – Crack propagation through kerb and gutter



Figure 1048 – General Condition of kerb and gutter



Figure 1049 – General Condition of kerb and gutter



Figure 1050 – Crack propagation and loss of material through kerb and gutter





Figure 1051 – General Condition of kerb and gutter



Figure 1052 – General Condition of stormwater inlet pit



Figure 1053 – General Condition of kerb and gutter



Figure 1054 – General Condition of kerb and gutter



Figure 1055 – General Condition of kerb and gutter



Figure 1056 – General Condition of kerb and gutter



Figure 1057 – General Condition of stormwater inlet pit



Figure 1058 – General Condition of kerb and gutter



Figure 1059 – General Condition of kerb and gutter



Figure 1060 – General Condition of kerb and gutter



Figure 1061 – General Condition of kerb and gutter



Figure 1062 – General Condition of kerb and gutter





Figure 1063 – Crack propagation through gutter



Figure 1064 – General Condition of kerb and gutter



Figure 1065 – General Condition of stormwater inlet pit



Figure 1066 – Crack propagation through stormwater inlet pit



Figure 1067 – Loss of material through stormwater inlet pit



Figure 1068 – General Condition of kerb and gutter



Figure 1069 – Crack propagation through kerb and gutter



Figure 1070 – General Condition of stormwater inlet pit



Figure 1071 – General Condition of kerb and gutter



Figure 1072 – General Condition of kerb and gutter



Figure 1073 – General Condition of kerb and gutter



Figure 1074 – Crack propagation through kerb





Figure 1075 – General Condition of kerb and gutter



Figure 1076 – General Condition of kerb and gutter



Figure 1077 – General Condition of kerb and gutter



Figure 1078 – General Condition of kerb and gutter



Figure 1079 – General Condition of stormwater inlet pit



Figure 1080 – Loss of material through stormwater inlet pit





Figure 1081 – Loss of material through kerb



Figure 1082 – General Condition of kerb and gutter



Figure 1083 – General Condition of kerb and gutter



Figure 1084 – General Condition of kerb and gutter



Figure 1085 – General Condition of kerb and gutter



Figure 1086 – General Condition of kerb and gutter





Figure 1087 – Crack propagation through kerb



Figure 1088 – General Condition of kerb and gutter



Figure 1089 – General Condition of kerb and gutter



Figure 1090 – General Condition of kerb and gutter



Figure 1091 – General Condition of kerb and gutter



Figure 1092 – General Condition of kerb and gutter



Figure 1093 – General Condition of kerb and gutter



Figure 1094 – General Condition of stormwater inlet pit



Figure 1095 – Crack propagation through stormwater inlet pit



Figure 1096 – Crack propagation through stormwater inlet pit



Figure 1097 – Crack propagation through stormwater inlet pit



Figure 1098 – General Condition of kerb and gutter





Figure 1099 – Crack propagation through kerb and gutter



Figure 1100 – General Condition of kerb and gutter



Figure 1101 – General Condition of kerb and gutter



Figure 1102 – General Condition of kerb and gutter



Figure 1103 – General Condition of kerb and gutter

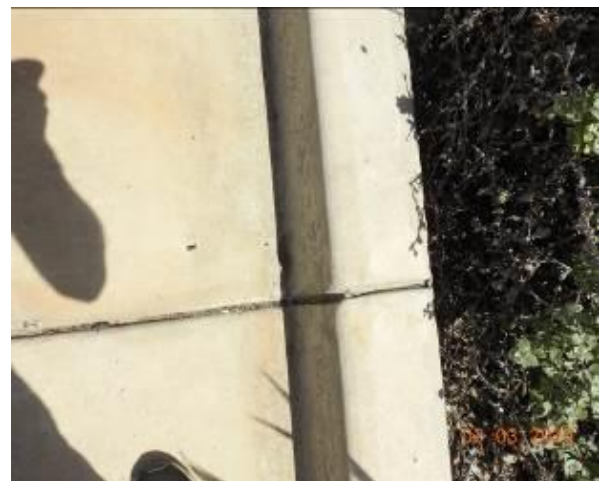


Figure 1104 – Crack propagation through kerb and gutter



Figure 1105 – General Condition of kerb and gutter



Figure 1106 – General Condition of kerb and gutter



Figure 1107 – General Condition of kerb and gutter



Figure 1108 – Crack propagation through kerb and gutter



Figure 1109 – General Condition of kerb and gutter



Figure 1110 – General Condition of kerb and gutter





Figure 1111 – General Condition of kerb and gutter



Figure 1112 – General Condition of stormwater inlet pit



Figure 1113 – General Condition of kerb and gutter



Figure 1114 – Crack propagation through kerb and gutter



Figure 1115 – General Condition of kerb and gutter



Figure 1116 – General Condition of kerb and gutter



Figure 1117 – General Condition of kerb and gutter



Figure 1118 – Crack propagation through kerb and gutter



Figure 1119 – General Condition of kerb and gutter



Figure 1120 – Crack propagation through kerb and gutter



Figure 1121 – General Condition of kerb and gutter



Figure 1122 – Crack propagation and loss of material through kerb and gutter





Figure 1123 – Crack propagation through kerb and gutter



Figure 1124 – Crack propagation through kerb and gutter



Figure 1125 – General Condition of kerb and gutter



Figure 1126 – Crack propagation and loss of material through kerb and gutter



Figure 1127 – General Condition of kerb and gutter



Figure 1128 – General Condition of kerb and gutter



Figure 1129 – General Condition of kerb and gutter



Figure 1130 – General Condition of kerb and gutter



Figure 1131 – General Condition of kerb and gutter



Figure 1132 – General Condition of street sign



Figure 1133 – General Condition of street sign



Figure 1134 – General Condition of lamp post  
Identification N.922707





Figure 1135 – General Condition of lamp post



Figure 1136 – General Condition of street sign



Figure 1137 – General Condition of street sign



Figure 1138 – General Condition of public bench



Figure 1139 – General Condition of public bench



Figure 1140 – General Condition of lamp post  
Identification N.922706





Figure 1141 – General Condition of lamp post



Figure 1142 – General Condition of street sign



Figure 1143 – General Condition of street sign



Figure 1144 – General Condition of street sign



Figure 1145 – General Condition of street sign



Figure 1146 – General Condition of lamp post  
Identification N.922705





Figure 1147 – General Condition of lamp post



Figure 1148 – General Condition of street sign



Figure 1149 – General Condition of public bench



Figure 1150 – General Condition of public bench



Figure 1151 – General Condition of street sign



Figure 1152 – General Condition of public bench



Figure 1153 – General Condition of public bench



Figure 1154 – General Condition of electricity box



Figure 1155 – General Condition of lamp post  
Identification N.922704



Figure 1156 – General Condition of lamp post



Figure 1157 – General Condition of street sign



Figure 1158 – General Condition of street sign





Figure 1159 – General Condition of lamp post  
Identification N.922708



Figure 1160 – General Condition of lamp post



Figure 1161 – General Condition of street sign



Figure 1162 – General Condition of street sign



Figure 1163 – General Condition of street sign



Figure 1164 – General Condition of street sign



Figure 1165 – General Condition of lamp post  
Identification N.922709



Figure 1166 – General Condition of lamp post



Figure 1167 – General Condition of street sign



Figure 1168 – General Condition of street sign



Figure 1169 – General Condition of lamp post  
Identification N.922710



Figure 1170 – General Condition of lamp post





Figure 1171 – General Condition of street sign



Figure 1172 – General Condition of street sign



Figure 1173 – General Condition of lamp post  
Identification N.922711



Figure 1174 – General Condition of lamp post



Figure 1175 – General Condition of street sign



Figure 1176 – General Condition of street sign



Figure 1177 – General Condition of traffic island bollard



Figure 1178 – General Condition of traffic island bollard



Figure 1179 – General Condition of street sign



Figure 1180 – General Condition of lamp post  
Identification N.922623



Figure 1181 – General Condition of lamp post



## Comments

The section of Conferta Avenue which is associated with the subject site was inspected and photographic evidence compiled in order to depict the condition of the council assets along this particular stretch of road prior to the commencement of any work at the subject site.

The road surface of Conferta Avenue at the time of the inspection was in a good condition with evidence of crack propagation, material loss and patchwork. In addition, cases of cracking presented among the driveway pavement.

At the same time the kerb, gutter and footpath which accompany the road way were also inspected. At the time of this inspection they were found to be in a good condition. There was evidence of Crack propagation and loss of material through the kerb, gutter and footpath.

The condition of the lamp posts, electricity boxes, public benches, stormwater inlet pits, traffic islands, traffic island bollards, street signs and service pits was also inspected and were determined to be in a reasonable condition. Cases of crack propagation and loss of material through service pits and stormwater inlet pits as well as cases of patchwork presented among the stormwater inlet pits

**Refer to Appendix (B) for photographic records of the above.**

## Appendix C

### Cudgrong Road Council Assets



❖ The map is taken from the Nearmaps website that holds copyright to this content.





Figure 1182 – The following images display condition of Cudgrong Road Council Assets



Figure 1183 – General Condition of footpath pavement



Figure 1184 – General Condition of footpath pavement



Figure 1185 – General Condition of footpath pavement



Figure 1186 – General Condition of footpath pavement



Figure 1187 – General Condition of footpath pavement



Figure 1188 – General Condition of footpath pavement



Figure 1189 – General Condition of service pit



Figure 1190 – General Condition of footpath pavement



Figure 1191 – General Condition of footpath pavement



Figure 1192 – General Condition of service pit



Figure 1193 – General Condition of footpath pavement





Figure 1194 – General Condition of footpath pavement



Figure 1195 – General Condition of footpath pavement



Figure 1196 – General Condition of footpath pavement



Figure 1197 – General Condition of footpath pavement



Figure 1198 – General Condition of footpath pavement



Figure 1199 – General Condition of service pit



Figure 1200 – General Condition of service pit



Figure 1201 – General Condition of footpath pavement



Figure 1202 – General Condition of service pit



Figure 1203 – General Condition of footpath pavement



Figure 1204 – General Condition of footpath pavement



Figure 1205 – General Condition of service pit





Figure 1206 – General Condition of service pit



Figure 1207 – General Condition of footpath pavement



Figure 1208 – General Condition of footpath pavement



Figure 1209 – General Condition of service pit



Figure 1210 – General Condition of service pit



Figure 1211 – General Condition of footpath pavement



Figure 1212 – General Condition of footpath pavement



Figure 1213 – General Condition of footpath pavement



Figure 1214 – General Condition of footpath pavement

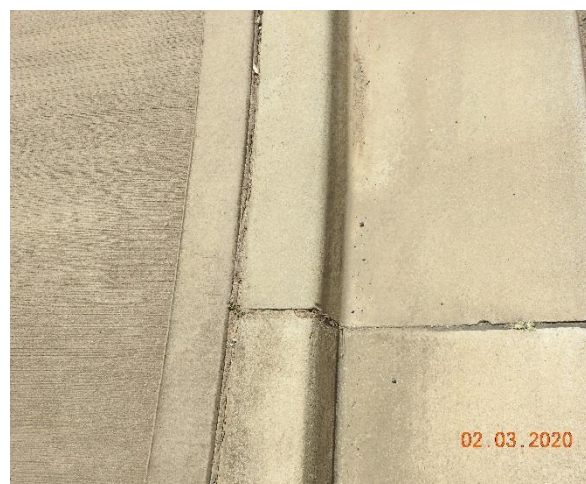


Figure 1215 – General Condition of kerb and gutter



Figure 1216 – General Condition of kerb and gutter



Figure 1217 – Loss of material through kerb and gutter





Figure 1218 – General Condition of stormwater inlet pit



Figure 1219 – General Condition of kerb and gutter



Figure 1220 – Loss of material through kerb and gutter



Figure 1221 – General Condition of kerb and gutter



Figure 1222 – Loss of material through kerb and gutter



Figure 1223 – General Condition of stormwater inlet pit



Figure 1224 – General Condition of kerb and gutter



Figure 1225 – Crack propagation through kerb and gutter



Figure 1226 – Crack propagation through kerb and gutter



Figure 1227 – Crack propagation through kerb and gutter



Figure 1228 – General Condition of stormwater inlet pit



Figure 1229 – General Condition of kerb and gutter





Figure 1230 – Loss of material through kerb and gutter



Figure 1231 – Crack propagation through kerb



Figure 1232 – General Condition of kerb and gutter



Figure 1233 – Crack propagation through kerb



Figure 1234 – Crack propagation through kerb and gutter



Figure 1235 – Crack propagation through kerb and gutter



Figure 1236 – General Condition of stormwater inlet pit



Figure 1237 – General Condition of kerb and gutter



Figure 1238 – Crack propagation through kerb and gutter



Figure 1239 – Crack propagation through kerb and gutter



Figure 1240 – Crack propagation through kerb and gutter



Figure 1241 – General Condition of kerb and gutter





Figure 1242 – Crack propagation through kerb and gutter



Figure 1243 – Crack propagation through kerb and gutter



Figure 1244 – General Condition of stormwater inlet pit



Figure 1245 – General Condition of kerb and gutter



Figure 1246 – Crack propagation through kerb



Figure 1247 – Crack propagation through kerb



Figure 1248 – General Condition of kerb and gutter



Figure 1249 – Loss of material through kerb

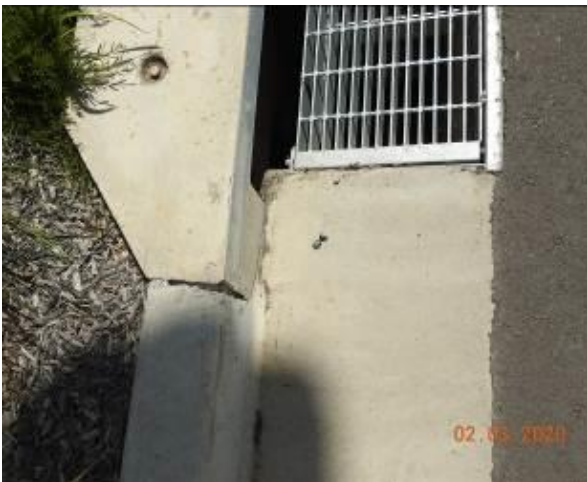


Figure 1250 – Crack propagation through kerb



Figure 1251 – General Condition of stormwater inlet pit



Figure 1252 – Crack propagation through kerb



Figure 1253 – General Condition of kerb and gutter





Figure 1254 – General Condition of stormwater inlet pit



Figure 1255 – General Condition of kerb and gutter



Figure 1256 – Crack propagation through kerb and gutter



Figure 1257 – General Condition of stormwater inlet pit



Figure 1258 – General Condition of kerb and gutter



Figure 1259 – General Condition of kerb and gutter



Figure 1260 – Crack propagation through kerb and gutter



Figure 1261 – General Condition of stormwater inlet pit



Figure 1262 – General Condition of kerb and gutter



Figure 1263 – Crack propagation through kerb and gutter



Figure 1264 – Crack propagation through kerb and gutter



Figure 1265 – Crack propagation through kerb and gutter





Figure 1266 – General Condition of kerb and gutter



Figure 1267 – Crack propagation through kerb and gutter



Figure 1268 – Crack propagation through kerb and gutter



Figure 1269 – Crack propagation through kerb and gutter



Figure 1270 – Crack propagation through kerb and gutter



Figure 1271 – Crack propagation through kerb and gutter



Figure 1272 – General Condition of kerb and gutter



Figure 1273 – General Condition of stormwater inlet pit



Figure 1274 – General Condition of kerb and gutter



Figure 1275 – General Condition of kerb and gutter



Figure 1276 – General Condition of kerb and gutter

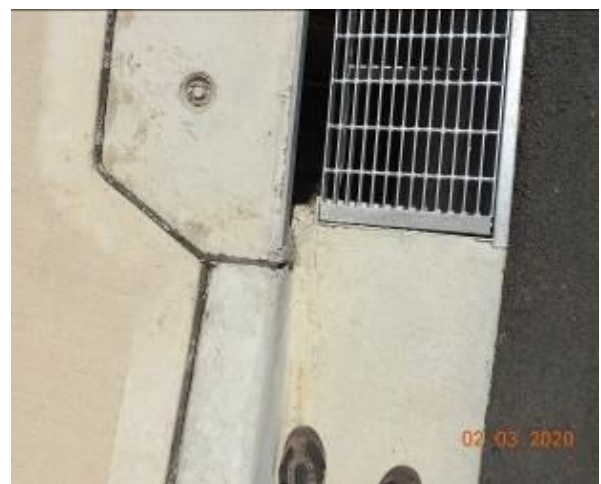


Figure 1277 – Crack propagation through stormwater inlet pit





Figure 1278 – General Condition of stormwater inlet pit



Figure 1279 – General Condition of kerb and gutter



Figure 1280 – General Condition of kerb and gutter



Figure 1281 – General Condition of kerb and gutter



Figure 1282 – General Condition of road surface



Figure 1283 – General Condition of road surface



Figure 1284 – General Condition of road surface



Figure 1285 – General Condition of road surface



Figure 1286 – General Condition of road surface



Figure 1287 – General Condition of road surface



Figure 1288 – General Condition of road surface



Figure 1289 – General Condition of road surface





Figure 1290 – General Condition of road surface



Figure 1291 – General Condition of road surface



Figure 1292 – General Condition of road surface



Figure 1293 – General Condition of road surface



Figure 1294 – General Condition of road surface



Figure 1295 – General Condition of road surface



Figure 1296 – General Condition of road surface



Figure 1297 – General Condition of road surface



Figure 1298 – General Condition of road surface



Figure 1299 – General Condition of road surface



Figure 1300 – General Condition of road surface



Figure 1301 – General Condition of street sign





Figure 1302 – General Condition of street sign



Figure 1303 – General Condition of lamp post



Figure 1304 – General Condition of street sign



Figure 1305 – General Condition of street sign



Figure 1306 – General Condition of street sign



Figure 1307 – General Condition of lamp post  
Identification No.835911



Figure 1308 – General Condition of lamp post



Figure 1309 – General Condition of lamp post  
Identification No.922619



Figure 1310 – General Condition of lamp post



Figure 1311 – General Condition of street sign



Figure 1312 – General Condition of lamp post  
Identification No.922621



Figure 1313 – General Condition of lamp post





Figure 1314 – General Condition of lamp post  
Identification No.922625



Figure 1315 – General Condition of lamp post



Figure 1316 – General Condition of street sign



Figure 1317 – General Condition of lamp post  
Identification No.922627



Figure 1318 – General Condition of lamp post



Figure 1319 – General Condition of traffic light /  
street sign



Figure 1320 – General Condition of lamp post  
Identification No.922629



Figure 1321 – General Condition of lamp post



Figure 1322 – General Condition of lamp post  
Identification No.922633



Figure 1323 – General Condition of lamp post



## Comments

The section of Cudgrong Road which is associated with the subject site was inspected and photographic evidence compiled in order to depict the condition of the council assets along this particular stretch of road prior to the commencement of any work at the subject site.

The road surface of Cudgrong Road at the time of the inspection was in a good condition with no major defects.

At the same time the kerb, gutter and footpath which accompany the road way were also inspected. At the time of this inspection they were found to be in a good condition. There was evidence of cracking and material loss through the kerb and gutter. The footpath pavement was in a good condition with no major defects.

The condition of the lamp posts, stormwater inlet pits, street signs and service pits was also inspected and were determined to be in a reasonable condition. With cases of crack propagation through stormwater inlet pit

**Refer to Appendix (C) for photographic records of the above.**

## Appendix D

### Schofields Road Council Assets



❖ The map is taken from the Nearmaps website that holds copyright to this content.





Figure 1324 – The following images display condition of Schofields Road Council Assets



Figure 1325 – General Condition of footpath pavement



Figure 1326 – General Condition of footpath pavement



Figure 1327 – General Condition of footpath pavement



Figure 1328 – General Condition of footpath pavement



Figure 1329 – General Condition of service pit



Figure 1330 – General Condition of footpath pavement



Figure 1331 – General Condition of footpath pavement



Figure 1332 – General Condition of footpath pavement



Figure 1333 – General Condition of footpath pavement



Figure 1334 – General Condition of footpath pavement



Figure 1335 – General Condition of footpath pavement





Figure 1336 – General Condition of footpath pavement



Figure 1337 – General Condition of footpath pavement



Figure 1338 – General Condition of footpath pavement



Figure 1339 – General Condition of footpath pavement



Figure 1340 – General Condition of footpath pavement



Figure 1341 – General Condition of footpath pavement



Figure 1342 – General Condition of footpath pavement



Figure 1343 – General Condition of footpath pavement



Figure 1344 – General Condition of footpath pavement



Figure 1345 – General Condition of footpath pavement



Figure 1346 – General Condition of footpath pavement



Figure 1347 – General Condition of footpath pavement





Figure 1348 – General Condition of footpath pavement



Figure 1349 – General Condition of footpath pavement



Figure 1350 – General Condition of footpath pavement



Figure 1351 – General Condition of service pit



Figure 1352 – General Condition of footpath pavement



Figure 1353 – General Condition of footpath pavement



Figure 1354 – General Condition of footpath pavement



Figure 1355 – General Condition of footpath pavement



Figure 1356 – General Condition of footpath pavement



Figure 1357 – General Condition of footpath pavement



Figure 1358 – General Condition of footpath pavement



Figure 1359 – General Condition of footpath pavement





Figure 1360 – General Condition of footpath pavement



Figure 1361 – General Condition of footpath pavement



Figure 1362 – General Condition of footpath pavement



Figure 1363 – General Condition of footpath pavement



Figure 1364 – General Condition of footpath pavement



Figure 1365 – General Condition of footpath pavement



Figure 1366 – General Condition of footpath pavement



Figure 1367 – General Condition of footpath pavement



Figure 1368 – General Condition of footpath pavement



Figure 1369 – General Condition of footpath pavement



Figure 1370 – General Condition of footpath pavement

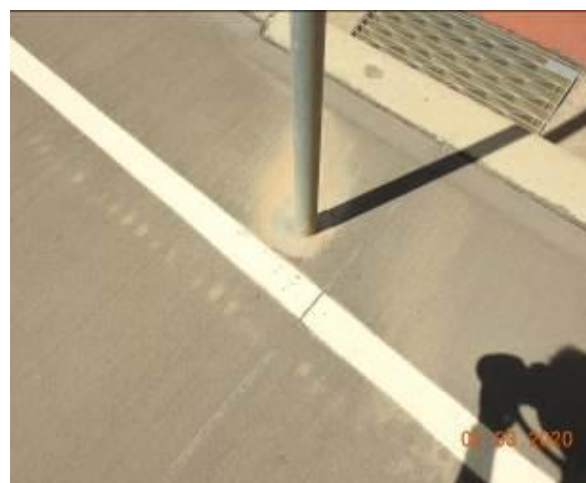


Figure 1371 – Evidence of patchwork through footpath pavement





Figure 1372 – General Condition of footpath pavement



Figure 1373 – General Condition of footpath pavement



Figure 1374 – General Condition of footpath pavement



Figure 1375 – General Condition of footpath pavement



Figure 1376 – General Condition of footpath pavement



Figure 1377 – General Condition of footpath pavement



Figure 1378 – General Condition of footpath pavement



Figure 1379 – General Condition of footpath pavement



Figure 1380 – General Condition of footpath pavement



Figure 1381 – General Condition of footpath pavement



Figure 1382 – General Condition of footpath pavement



Figure 1383 – General Condition of footpath pavement





Figure 1384 – General Condition of service pit



Figure 1385 – General Condition of footpath pavement



Figure 1386 – General Condition of footpath pavement



Figure 1387 – General Condition of footpath pavement



Figure 1388 – General Condition of footpath pavement



Figure 1389 – General Condition of footpath pavement



Figure 1390 – General Condition of footpath pavement



Figure 1391 – General Condition of footpath pavement



Figure 1392 – General Condition of footpath pavement



Figure 1393 – Evidence of patchwork through footpath pavement



Figure 1394 – Crack propagation through footpath pavement



Figure 1395 – Crack propagation through footpath pavement





Figure 1396 – Crack propagation through footpath pavement



Figure 1397 – Crack propagation through footpath pavement



Figure 1398 – Crack propagation through footpath pavement



Figure 1399 – General Condition of footpath pavement



Figure 1400 – General Condition of footpath pavement



Figure 1401 – General Condition of footpath pavement



Figure 1402 – General Condition of footpath pavement



Figure 1403 – General Condition of footpath pavement



Figure 1404 – General Condition of footpath pavement



Figure 1405 – General Condition of footpath pavement



Figure 1406 – General Condition of footpath pavement



Figure 1407 – General Condition of footpath pavement





Figure 1408 – General Condition of footpath pavement



Figure 1409 – General Condition of footpath pavement



Figure 1410 – General Condition of footpath pavement



Figure 1411 – General Condition of footpath pavement



Figure 1412 – General Condition of footpath pavement



Figure 1413 – Evidence of patchwork through footpath pavement



Figure 1414 – General Condition of footpath pavement



Figure 1415 – General Condition of footpath pavement



Figure 1416 – General Condition of footpath pavement



Figure 1417 – General Condition of footpath pavement



Figure 1418 – General Condition of footpath pavement



Figure 1419 – General Condition of footpath pavement





Figure 1420 – General Condition of service pit



Figure 1421 – General Condition of footpath pavement



Figure 1422 – General Condition of footpath pavement



Figure 1423 – General Condition of footpath pavement



Figure 1424 – General Condition of footpath pavement



Figure 1425 – General Condition of footpath pavement



Figure 1426 – General Condition of footpath pavement



Figure 1427 – General Condition of footpath pavement



Figure 1428 – General Condition of footpath pavement



Figure 1429 – General Condition of footpath pavement



Figure 1430 – General Condition of footpath pavement



Figure 1431 – General Condition of footpath pavement





Figure 1432 – General Condition of footpath pavement



Figure 1433 – General Condition of footpath pavement



Figure 1434 – General Condition of footpath pavement



Figure 1435 – General Condition of footpath pavement



Figure 1436 – General Condition of footpath pavement



Figure 1437 – General Condition of footpath pavement



Figure 1438 – General Condition of service pit



Figure 1439 – General Condition of footpath pavement



Figure 1440 – General Condition of service pit



Figure 1441 – General Condition of footpath pavement



Figure 1442 – General Condition of service pit



Figure 1443 – General Condition of footpath pavement





Figure 1444 – General Condition of footpath pavement



Figure 1445 – Crack propagation and loss of material through footpath pavement



Figure 1446 – Crack propagation through footpath pavement



Figure 1447 – General Condition of footpath pavement



Figure 1448 – General Condition of service pit



Figure 1449 – General Condition of footpath pavement



Figure 1450 – General Condition of footpath pavement



Figure 1451 – General Condition of footpath pavement



Figure 1452 – General Condition of footpath pavement



Figure 1453 – General Condition of footpath pavement



Figure 1454 – General Condition of footpath pavement



Figure 1455 – General Condition of footpath pavement





Figure 1456 – Crack propagation through service pit



Figure 1457 – Crack propagation through footpath pavement



Figure 1458 – General Condition of footpath pavement



Figure 1459 – Crack propagation through footpath pavement



Figure 1460 – Crack propagation through footpath pavement



Figure 1461 – General Condition of footpath pavement



Figure 1462 – General Condition of footpath pavement



Figure 1463 – General Condition of footpath pavement



Figure 1464 – General Condition of footpath pavement



Figure 1465 – General Condition of General Condition of service pit



Figure 1466 – Crack propagation through footpath pavement



Figure 1467 – General Condition of footpath pavement