

**75 SCHOFIELDS ROAD, 81 SCHOFIELD ROAD,
38 CUDGEGONG ROAD, ROUSE HILL
PRE-DILAPIDATION REPORT
DEICORP PROJECTS**

Job No. 191294.1
05/07/2021



ACE

ACE Structural Services Pty Ltd

ABN: 39 642 896 606

Shop 2, 141 Concord Road, North Strathfield NSW 2137

Phone: +61 2 9763 1500

Fax: +61 2 9763 1515

Web: www.aceeng.com.au

Email: info@aceeng.com.au

Contents

Contents	2
Introduction	3
Description of Assessment Terms	4
Classification of Damage in Accordance with AS2870:2011	5
Inspected Areas.....	7
Dilapidation Survey Areas	8
Appendix A P1 Car Park.....	9
Appendix B P2 Car Park.....	82
Appendix C P3 Carpark	245
Appendix D Tallawong Station.....	406
Record of Inspections.....	422
Record of Communication.....	423
Summary	424

Introduction

Important Information Regarding the Scope and Limitations of the Inspection and this Report

- I. This report is not an all-encompassing report dealing with the building from every aspect. This report is not a Certificate of Compliance with the requirements of any Act, Regulation, Ordinance or by-law. It is **not** a structural report. Should you require any advice of a structural nature you should contact a structural engineer.
- II. **THIS IS A VISUAL INSPECTION ONLY limited** to those areas and the sections of the property fully accessible to the inspector on the date of inspection. An inspection **does not** include breaking apart, dismantling, removing or moving objects including but not limited to, foliage, mouldings, roof insulation / insulation, floor or wall coverings, sidings, ceilings, floors, furnishings, appliances or personal possessions. The inspector cannot see inside walls, between floors, inside skill iron roofing, behind stored goods in cupboards, other areas that are concealed or obstructed. The inspector **did not** dig, gouge, force or perform any other invasive procedures. Visible timbers cannot be destructively probed or hit without the written permission of the property owner.
- III. This report **does not** and **cannot** make comment upon defects that may have been concealed during the assessment or detection of defects (including- rising damp and leaks) which may be subject to the prevailing weather conditions; the presence or absence of timber pests, gas-fittings, common property areas, environmental concerns; the proximity of the property to flight paths, railways, or busy traffic; noise levels; health and safety issues; heritage concerns; security concerns; fire protections; site drainage (apart from surface water drainage); swimming pools and spas (non-structural); detection and identification of illegal building work ; detection and identification of illegal plumbing work; durability of exposed finishes; neighbourhood problems; and document analysis; electrical installations; any matters that are solely regulated by statute; any area(s) or item(s) that **could not** be inspected by the consultant. Accordingly, this report is **not a guarantee** that defects and/ or damage **does not** exist in any inaccessible or partly inaccessible areas or sections of the property. (NB: such matters may upon request be covered under the terms of a special purpose property report.)
- IV. In the event of any controversy or claim arising out of, or relating to this report, it will be settled by arbitration, in accordance with the rules of the Institute of Arbitrators Australia. Any judgments from such arbitration shall be binding upon both parties.

Description of Assessment Terms

- **Good** Indicates that there are no defects evident and the items described are in good condition for their age.
- **Reasonable** Indicates the item may have minor defects that should be noted but not significant enough to need immediate rectification
- **Poor** Indicates that general maintenance or minor repair may be warranted
- **Defective** Indicates there is a significant fault that should be rectified.

Classification of Damage in Accordance with AS2870:2011

Table C1 shows the classification of damage with reference to wall in accordance with AS2870:2011

Description of typical damage and required repair	Approximate crack width limit (see Note 1)	Damage category
Hairline cracks	<0.1 mm	0 Negligible
Fine cracks that do not need repair	<1 mm	1 Very slight
Cracks noticeable but easily filled. Doors and windows stick slightly	<5 mm	2 Slight
Cracks can be repaired and possibly a small amount of wall will need to be replaced. Doors and windows stick. Service pipes can fracture. Weather tightness often impaired.	5 mm to 15 mm (or a number of cracks 3 mm or more in one group)	3 Moderate
Extensive repair work involving breaking out and replacing sections of walls, especially over doors and windows. Window frames and door frames distort. Walls lean or bulge noticeably, some loss of bearing in beams. Service pipes disrupted.	15 mm to 25 mm but also depends on number of cracks	4 Severe

NOTES:

- Where the cracking occurs in easily repaired plasterboard or similar clad-framed partitions, the crack width limits may be increased by 50% for each damage category.
- Crack width is the main factor by which damage to walls is categorized. The width may be supplemented by other factors, including serviceability, in assessing category of damage.
- In assessing the degree of damage, account shall be taken of the location in the building or structure where it occurs, and also of the function of the building or structure.

Table C2 shows the classification of damage with reference to concrete floors in accordance with AS2870:2011

Description of typical damage	Approx. crack width limit in floor	Change in offset from a 3 m straightedge centred over defect (see Note 1)	Damage category
Hairline cracks, insignificant movement of slab from level	<0.3 mm	<8 mm	0 Negligible
Fine but noticeable cracks. Slab reasonably level.	<1.0 mm	<10 mm	1 Very slight
Distinct cracks. Slab noticeably curved or changed in level	<2.0 mm	<15 mm	2 Slight
Wide cracks. Obvious curvature or change in level	2 mm to 4 mm	15 mm to 25 mm	3 Moderate
Gaps in slab. Disturbing curvature or change in level	4 mm to 10 mm	>25 mm	4 Severe

NOTES:

- 1 The straightedge is centred over the defect, usually, and supported at its ends by equal height spacers. The change in offset is then measured relative to this straightedge, which is not necessarily horizontal.
- 2 Local deviation of slope, from the horizontal or vertical, of more than 1:100 will normally be clearly visible. Overall deviations in excess of 1:150 is undesirable.
- 3 Account should be taken of the past history of damage in order to assess whether it is stable or likely to increase.

Inspected Areas

The Area*(s) inspected were:

The Car parks and Sydney Metro train assets.

The Area*(s) NOT Accessible for any Inspection and the Reason(s) why were:

No inspection was made of concealed frame timbers or any areas concealed by wall linings/sidings, soil, landscaping, rubbish, floor coverings, furniture, pictures, appliances, stored items, insulation, hollow blocks/pots or any other obstructions to visual inspection.

The internal areas of all neighbouring properties

Further than **20m** from the said sight unless otherwise stated.

The Area*(s) in which Visual Inspection was obstructed and the reason(s) why were:

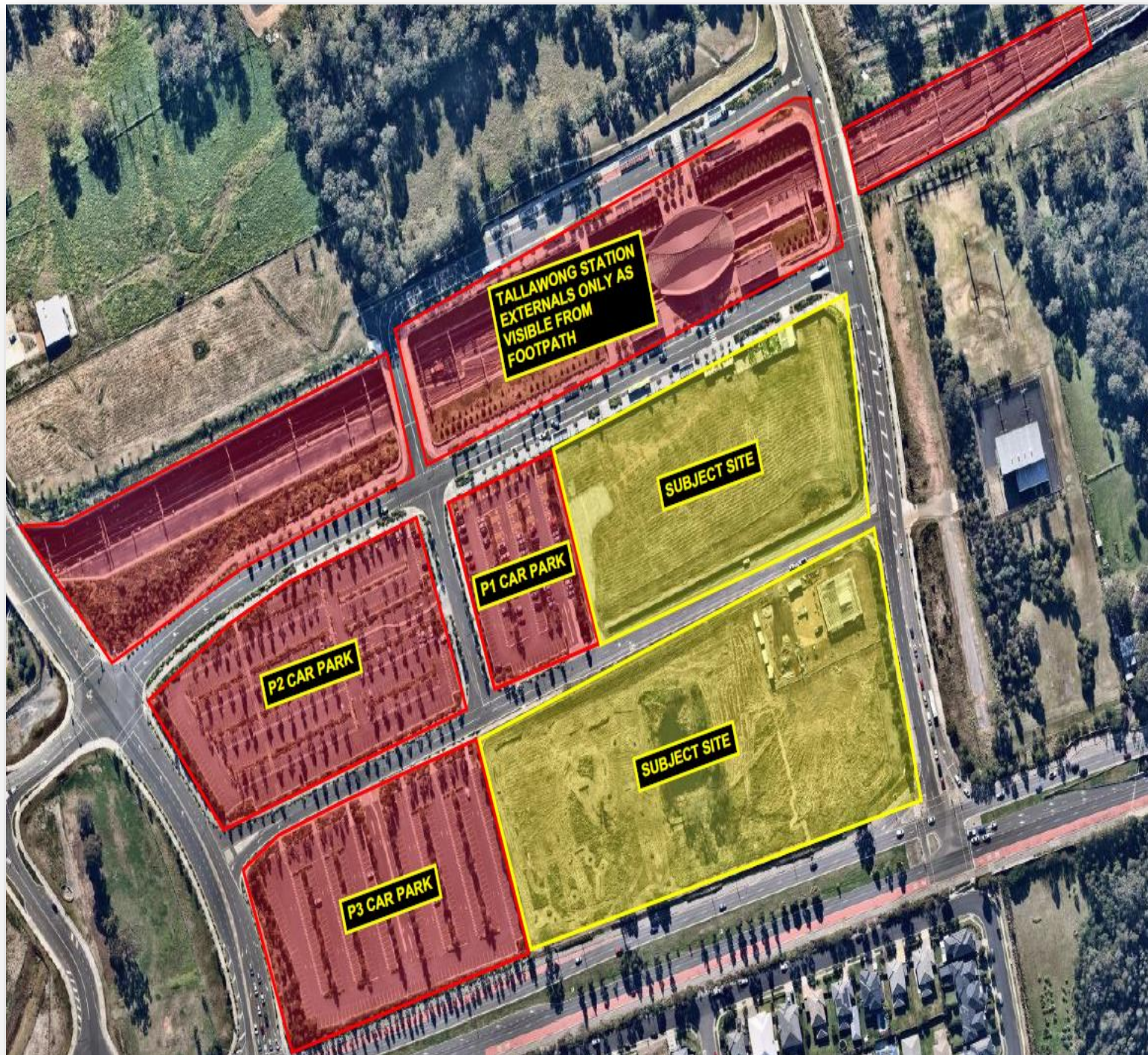
Floor coverings and furnishings

Vegetation growth

Stored boxes etc...

* No comment is made on these concealed areas.

Dilapidation Survey Areas



❖ The map is taken from the Nearmaps website that holds copyright to this content.

Appendix A

P1 Car Park



❖ The map is taken from the Nearmaps website that holds copyright to this content.



Figure 1 – The following images display the condition of P1 car park along Tallawong Station



Figure 2 – General condition of car park pavement



Figure 3 – Crack propagation through car park pavement



Figure 4 – General condition of car park pavement



Figure 5 – General condition of service pit and car park pavement



Figure 6 – General condition of car park pavement



Figure 7 – Loss of material through car park pavement



Figure 8 – General condition of car park pavement



Figure 9 – General condition of car park pavement



Figure 10 – General condition of car park pavement



Figure 11 – General condition of car park pavement



Figure 12 – General condition of car park pavement



Figure 13 – Crack propagation through car park pavement



Figure 14 – General condition of car park pavement



Figure 15 – General condition of car park pavement



Figure 16 – General condition of car park pavement



Figure 17 – General condition of car park pavement



Figure 18 – General condition of car park pavement



Figure 19 – General condition of car park pavement



Figure 20 – General condition of car park pavement



Figure 21 – General condition of car park pavement



Figure 22 – General condition of car park pavement



Figure 23 – General condition of car park pavement



Figure 24 – Evidence of patchwork through car park pavement



Figure 25 – General condition of car park pavement



Figure 26 – General condition of car park pavement



Figure 27 – Evidence of patchwork through car park pavement and general condition of service pit



Figure 28 – General condition of service pit and car park pavement



Figure 29 – General condition of service pit and car park pavement



Figure 30 – General condition of car park pavement



Figure 31 – General condition of car park pavement



Figure 33 – Loss of material through car park pavement



Figure 35 – General condition of car park pavement



Figure 32 – General condition of car park pavement



Figure 34 – Loss of material through car park pavement



Figure 36 – General condition of car park pavement



Figure 37 – General condition of car park pavement



Figure 38 – General condition of car park pavement



Figure 39 – General condition of car park pavement



Figure 40 – General condition of car park pavement



Figure 41 – General condition of car park pavement



Figure 42 – General condition of car park pavement



Figure 43 – General condition of car park pavement



Figure 44 – General condition of car park pavement



Figure 45 – General condition of car park pavement



Figure 46 – General condition of car park pavement



Figure 47 – General condition of car park pavement



Figure 48 – General condition of car park pavement



Figure 49 – Crack propagation through car park pavement



Figure 50 – Crack propagation through car park pavement



Figure 51 – Crack propagation through car park pavement



Figure 52 – General condition of car park pavement



Figure 53 – General condition of car park pavement



Figure 54 – General condition of car park pavement



Figure 55 – General condition of car park pavement



Figure 56 – Crack propagation through car park pavement



Figure 57 – General condition of car park pavement



Figure 58 – Crack propagation through car park pavement



Figure 59 – Crack propagation through car park pavement



Figure 60 – General condition of car park pavement



Figure 61 – General condition of car park pavement



Figure 62 – General condition of car park pavement



Figure 63 – General condition of car park pavement



Figure 64 – General condition of car park pavement



Figure 65 – General condition of car park pavement



Figure 66 – General condition of car park pavement



Figure 67 – General condition of car park pavement



Figure 68 – General condition of car park pavement



Figure 69 – General condition of car park pavement



Figure 70 – General condition of kerb car park kerb



Figure 71 – General condition of car park kerb



Figure 72 – Crack propagation through car park kerb



Figure 73 – Hairline cracking through car park kerb



Figure 74 – General condition of car park kerb



Figure 75 – Crack propagation through car park kerb



Figure 76 – Crack propagation through car park kerb



Figure 77 – Crack propagation through car park kerb



Figure 78 – General condition of car park kerb



Figure 79 – Crack propagation through car park kerb



Figure 80 – General condition of car park kerb



Figure 81 – General condition of car park kerb



Figure 82 – General condition of stormwater inlet pit



Figure 83 – Crack propagation through car park kerb



Figure 84 – Crack propagation through car park kerb



Figure 85 – General condition of car park kerb



Figure 86 – Crack propagation through car park kerb



Figure 87 – Crack propagation through car park kerb



Figure 88 – Evidence of patchwork through car park kerb



Figure 89 – Crack propagation through car park kerb



Figure 90 – Crack propagation through car park kerb and general condition of service pit



Figure 91 – Crack propagation through car park kerb



Figure 92 – General condition of car park kerb



Figure 93 – Hairline cracking through car park kerb



Figure 94 – Hairline cracking through car park kerb



Figure 95 – Hairline cracking through car park kerb



Figure 96 – General condition of car park kerb



Figure 97 – General condition of car park kerb



Figure 98 – General condition of car park kerb



Figure 99 – Evidence of patchwork through car park kerb



Figure 100 – General condition of car park kerb and service pit



Figure 101 – General condition of car park kerb and service pit



Figure 102 – General condition of stormwater inlet pit



Figure 103 – General condition of car park kerb and service pit



Figure 104 – Crack propagation through car park kerb and service pit



Figure 105 – General condition of car park kerb and service pit



Figure 106 – General condition of car park kerb and service pit



Figure 107 – General condition of car park kerb

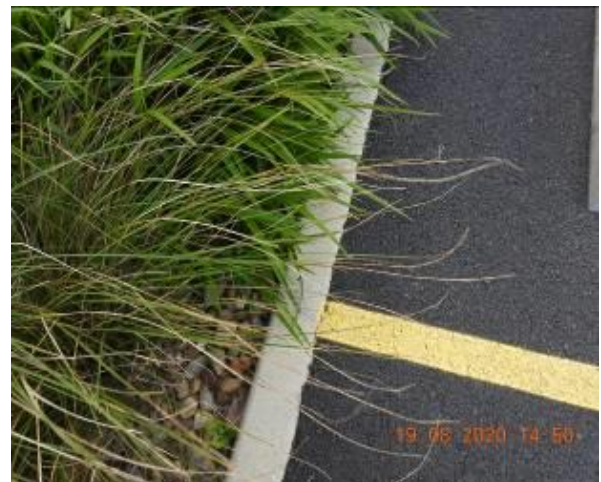


Figure 108 – Crack propagation through car park kerb and service pit



Figure 109 – General condition of car park kerb



Figure 110 – General condition of car park kerb



Figure 111 – Crack propagation through car park kerb



Figure 112 – Hairline cracking through car park kerb



Figure 113 – General condition of car park kerb



Figure 114 – Crack propagation through car park kerb



Figure 115 – Hairline cracking through car park kerb



Figure 116 – Hairline cracking through car park kerb



Figure 117 – General condition of car park kerb and gutter



Figure 118 – Crack propagation through car park kerb and gutter



Figure 119 – Crack propagation through car park kerb and gutter



Figure 120 – Crack propagation through car park kerb and gutter



Figure 121 – General condition of car park kerb and gutter



Figure 122 – Loss of material through car park kerb and gutter



Figure 123 – General condition of car park kerb and gutter



Figure 124 – Crack propagation through car park kerb and gutter



Figure 125 – Crack propagation through car park kerb and gutter



Figure 126 – Hairline cracking through car park kerb and gutter



Figure 127 – Crack propagation through car park kerb and gutter



Figure 128 – General condition of car park kerb and gutter



Figure 129 – General condition of kerb inlet pit and stormwater inlet pit



Figure 130 – General condition of plantation



Figure 131 – Crack propagation through car park kerb and gutter



Figure 132 – General condition of car park kerb and gutter



Figure 133 – General condition of service pit



Figure 134 – Crack propagation through car park kerb and gutter



Figure 135 – General condition of car park kerb and gutter



Figure 136 – General condition of car park kerb and gutter



Figure 137 – General condition of plantation



Figure 138 – General condition of car park kerb and gutter



Figure 139 – General condition of car park kerb and gutter



Figure 140 – General condition of car park kerb and gutter



Figure 141 – General condition of kerb inlet pit and stormwater inlet pit



Figure 142 – Crack propagation through car park kerb



Figure 143 – Crack propagation through car park kerb and gutter



Figure 144 – Crack propagation through car park kerb and gutter



Figure 145 – General condition of car park kerb and gutter



Figure 146 – Hairline cracking through car park kerb



Figure 147 – Hairline cracking through car park kerb



Figure 148 – Hairline cracking through car park kerb



Figure 149 – Hairline cracking through car park kerb



Figure 150 – Hairline cracking through car park kerb



Figure 151 – Hairline cracking through car park kerb



Figure 152 – General condition of kerb inlet pit and stormwater inlet pit



Figure 153 – General condition of car park kerb and gutter



Figure 154 – General condition of traffic island kerb



Figure 155 – Crack propagation through traffic island kerb



Figure 156 – General condition of traffic island kerb



Figure 157 – General condition of traffic island kerb



Figure 158 – General condition of service pit



Figure 159 – General condition of car park kerb



Figure 160 – Crack propagation through car park kerb

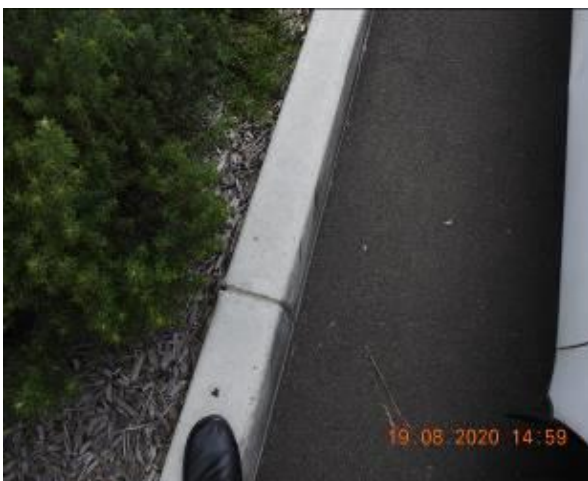


Figure 161 – Crack propagation through car park kerb



Figure 162 – Crack propagation and loss of material through car park kerb



Figure 163 – General condition of kerb inlet pit and stormwater inlet pit



Figure 164 – Crack propagation through car park kerb and gutter



Figure 165 – General condition of car park kerb and gutter



Figure 166 – General condition of kerb inlet pit and stormwater inlet pit



Figure 167 – Crack propagation and loss of material through car park kerb and gutter



Figure 168 – Crack propagation through car park kerb



Figure 169 – General condition of car park kerb and gutter



Figure 170 – General condition of car park kerb and gutter



Figure 171 – General condition of kerb inlet pit and stormwater inlet pit



Figure 172 – Evidence of patchwork through and crack propagation through car park gutter



Figure 173 – General condition of kerb inlet pit and stormwater inlet pit



Figure 174 – Hairline cracking through car park kerb and gutter



Figure 175 – Crack propagation through car park kerb



Figure 176 – Crack propagation through car park kerb



Figure 177 – General condition of car park kerb



Figure 178 – General condition of car park kerb



Figure 179 – Crack propagation through car park kerb



Figure 180 – Crack propagation through car park kerb



Figure 181 – General condition of car park kerb



Figure 182 – Crack propagation through car park kerb



Figure 183 – General condition of car park kerb



Figure 184 – General condition of car park kerb



Figure 185 – Loss of material through car park kerb



Figure 186 – Hairline cracking through car park kerb



Figure 187 – General condition of car park kerb



Figure 188 – General condition of car park kerb



Figure 189 – General condition of car park kerb



Figure 190 – Crack propagation through car park kerb

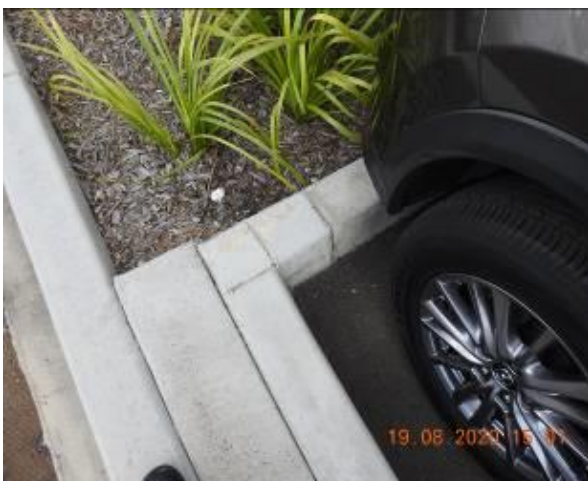


Figure 191 – Crack propagation through car park kerb



Figure 192 – General condition of plantation



Figure 193 – General condition of car park kerb



Figure 194 – General condition of car park kerb



Figure 195 – General condition of car park kerb



Figure 196 – General condition of car park kerb



Figure 197 – Crack propagation through car park kerb



Figure 198 – Crack propagation through car park kerb



Figure 199 – General condition of car park kerb



Figure 200 – General condition of car park kerb and gutter



Figure 201 – General condition of car park kerb and gutter



Figure 202 – Crack propagation through gutter



Figure 203 – Crack propagation through car park kerb and gutter



Figure 204 – Crack propagation through car park kerb and gutter



Figure 205 – General condition of car park kerb and gutter



Figure 206 – General condition of plantation



Figure 207 – Crack propagation through car park kerb and gutter



Figure 208 – General condition of car park kerb and gutter



Figure 209 – Crack propagation through car park kerb and gutter



Figure 210 – Crack propagation through car park gutter



Figure 211 – General condition of plantation



Figure 212 – General condition of car park kerb and gutter



Figure 213 – Crack propagation through car park gutter



Figure 214 – Crack propagation through car park gutter



Figure 215 – Crack propagation through car park gutter



Figure 216 – General condition of car park kerb and gutter



Figure 217 – General condition of service pit



Figure 218 – Crack propagation through car park kerb and gutter



Figure 219 – Crack propagation through car park kerb and gutter



Figure 220 – Crack propagation through car park kerb and gutter



Figure 221 – General condition of car park kerb and gutter



Figure 222 – Crack propagation through car park gutter



Figure 223 – Crack propagation through car park kerb and gutter



Figure 224 – General condition of car park kerb and gutter



Figure 225 – Crack propagation through car park kerb and gutter



Figure 226 – Hairline cracking through car park gutter



Figure 227 – General condition of car park kerb and gutter



Figure 228 – Crack propagation through car park kerb and gutter



Figure 229 – Loss of material through car park kerb



Figure 230 – General condition of car park kerb



Figure 231 – General condition of car park kerb



Figure 232 – Crack propagation through car park kerb



Figure 233 – Crack propagation through car park kerb



Figure 234 – General condition of car park kerb



Figure 235 – Hairline cracking through car park kerb



Figure 236 – General condition of car park layback



Figure 237 – General condition of car park kerb



Figure 238 – General condition of car park kerb



Figure 239 – General condition of car park kerb



Figure 240 – General condition of car park kerb



Figure 241 – General condition of car park kerb



Figure 242 – General condition of car park kerb



Figure 243 – General condition of car park kerb



Figure 244 – General condition of car park kerb



Figure 245 – General condition of car park kerb



Figure 246 – Crack propagation through car park kerb



Figure 247 – Crack propagation through car park kerb



Figure 248 – Crack propagation through car park kerb



Figure 249 – Crack propagation through car park kerb



Figure 250 – General condition of car park kerb



Figure 251 – General condition of car park kerb



Figure 252 – General condition of car park kerb



Figure 253 – General condition of car park kerb



Figure 254 – General condition of car park kerb



Figure 255 – Crack propagation through car park kerb



Figure 256 – General condition of car park kerb



Figure 257 – General condition of car park kerb



Figure 258 – General condition of car park kerb



Figure 259 – General condition of car park kerb



Figure 260 – Crack propagation through car park kerb



Figure 261 – General condition of car park kerb



Figure 262 – Crack propagation through car park kerb



Figure 263 – Crack propagation through car park kerb



Figure 264 – General condition of car park kerb



Figure 265 – General condition of car park kerb



Figure 267 – General condition of car park kerb



Figure 269 – General condition of car park kerb



Figure 266 – General condition of car park kerb



Figure 268 – Crack propagation through car park kerb



Figure 270 – General condition of car park kerb and service pit



Figure 271 – General condition of car park kerb and service pit



Figure 272 – General condition of car park kerb and service pit



Figure 273 – General condition of car park kerb and service pit



Figure 274 – General condition of car park kerb



Figure 275 – Crack propagation through car park kerb



Figure 276 – General condition of car park kerb



Figure 277 – General condition of car park kerb



Figure 278 – Crack propagation through car park kerb



Figure 279 – General condition of car park kerb



Figure 280 – General condition of car park kerb



Figure 281 – Crack propagation through car park kerb



Figure 282 – Crack propagation through car park kerb



Figure 283 – Crack propagation through car park kerb



Figure 284 –



Figure 285 – Crack propagation through car park kerb



Figure 286 – General condition of car park kerb



Figure 287 – General condition of car park kerb



Figure 288 – Crack propagation through car park kerb and service pit



Figure 289 – General condition of car park kerb and service pit



Figure 290 – Evidence of patchwork through car park kerb and service pit



Figure 291 – Crack propagation through car park kerb and service pit



Figure 292 – General condition of car park kerb and service pit



Figure 293 – Crack propagation through car park kerb and service pit



Figure 294 – General condition of car park kerb and service pit



Figure 295 – Crack propagation through car park kerb and service pit



Figure 296 – General condition of car park kerb and service pit



Figure 297 – General condition of car park kerb and service pit



Figure 298 – General condition of car park kerb and stormwater inlet pit



Figure 299 – General condition of car park kerb



Figure 300 – General condition of car park kerb



Figure 301 – General condition of car park kerb



Figure 302 – Crack propagation through car park kerb



Figure 303 – Crack propagation through car park kerb



Figure 304 – General condition of car park kerb and service pit



Figure 305 – General condition of stormwater inlet pit



Figure 306 – Evidence of patchwork through car park kerb and General condition of service pit



Figure 307 – General condition of car park kerb and service pit



Figure 308 – Crack propagation through car park kerb and service pit



Figure 309 – General condition of car park kerb and service pit



Figure 310 – Crack propagation and loss of material through car park kerb



Figure 311 – General condition of car park kerb and service pit



Figure 312 – General condition of service pit



Figure 313 – General condition of car park kerb



Figure 314 – Crack propagation through car park kerb



Figure 315 – General condition of car park kerb



Figure 316 – General condition of car park kerb



Figure 317 – Crack propagation through car park kerb



Figure 318 – Crack propagation through car park kerb



Figure 319 – General condition of car park kerb



Figure 320 – Crack propagation through car park kerb



Figure 321 – General condition of car park kerb



Figure 322 – General condition of car park kerb



Figure 323 – Crack propagation through car park kerb



Figure 324 – General condition of car park kerb



Figure 325 – General condition of car park kerb



Figure 326 – Hairline cracking through car park kerb



Figure 327 – Loss of material through car park kerb



Figure 328 – General condition of car park kerb



Figure 329 – Crack propagation and loss of material through car park kerb



Figure 330 – Crack propagation and loss of material through car park kerb



Figure 331 – General condition of car park kerb



Figure 332 – Crack propagation through car park kerb and service pit



Figure 333 – General condition of stormwater inlet pit



Figure 334 – General condition of car park kerb and service pit



Figure 335 – General condition of car park kerb and service pit



Figure 336 – Crack propagation through car park kerb and service pit



Figure 337 – General condition of car park kerb and service pit



Figure 338 – Crack propagation through car park kerb and service pit



Figure 339 – General condition of car park kerb and service pit



Figure 340 – General condition of car park kerb



Figure 341 – Crack propagation through car park kerb



Figure 342 – General condition of car park kerb



Figure 343 – General condition of car park kerb



Figure 344 – General condition of car park kerb



Figure 345 – Crack propagation through car park kerb



Figure 346 – Crack propagation through car park kerb



Figure 347 – Crack propagation and loss of material through car park kerb



Figure 348 – General condition of car park kerb



Figure 349 – General condition of car park kerb



Figure 350 – Loss of material through car park kerb



Figure 351 – Crack propagation through car park kerb



Figure 352 – General condition of car park kerb and service pit



Figure 353 – Crack propagation through car park kerb and service pit



Figure 354 – General condition of car park kerb and service pit



Figure 355 – Evidence of patchwork through car park kerb and service pit



Figure 356 – General condition of car park kerb and service pit



Figure 357 – Crack propagation through car park kerb and service pit



Figure 358 – General condition of car park kerb and service pit



Figure 359 – Crack propagation through car park kerb and service pit



Figure 360 – Crack propagation through car park kerb and service pit



Figure 361 – Evidence of patchwork through car park kerb and service pit



Figure 362 – Crack propagation through car park kerb and service pit



Figure 363 – General condition of car park kerb



Figure 364 – Crack propagation through car park kerb



Figure 365 – Hairline cracking through car park kerb



Figure 366 – General condition of car park kerb



Figure 367 – General condition of car park kerb



Figure 368 – Crack propagation through car park kerb



Figure 369 – General condition of car park kerb and service pit



Figure 370 – General condition of car park kerb and service pit



Figure 371 – General condition of car park kerb and service pit



Figure 372 – Crack propagation through car park kerb and service pit



Figure 373 – Crack propagation through car park kerb and service pit



Figure 374 – General condition of car park kerb and service pit



Figure 375 – Crack propagation through car park kerb and service pit



Figure 376 – General condition of car park kerb and service pit



Figure 377 – Crack propagation through car park kerb and service pit



Figure 378 – Crack propagation through car park kerb and service pit



Figure 379 – Hairline cracking through car park kerb and service pit



Figure 380 – Crack propagation through car park kerb and service pit



Figure 381 – Crack propagation through car park kerb and service pit



Figure 382 – General condition of car park kerb



Figure 383 – General condition of car park kerb



Figure 384 – Crack propagation through car park kerb



Figure 385 – General condition of car park kerb



Figure 386 – General condition of car park kerb



Figure 387 – General condition of street signs



Figure 388 – General condition of street sign, plantation and lamp post



Figure 389 – General condition of plantation



Figure 390 – General condition of street sign



Figure 391 – General condition of plantation and lamp post



Figure 392 – General condition of plantation and lamp post



Figure 393 – General condition of traffic bollard



Figure 394 – General condition of street sign



Figure 395 – General condition of plantation



Figure 396 – General condition of traffic bollard



Figure 397 – General condition of lamp post



Figure 398 – General condition of traffic bollard



Figure 399 – General condition of plantation



Figure 400 – General condition of plantation and lamp post



Figure 401 – General condition of street sign



Figure 402 – General condition of plantation and lamp post



Figure 403 – General condition of street sign



Figure 404 – General condition of electric box
identification No. CUD – X – DEC – 1E



Figure 405 – General condition of electric box
identification No. CUD – X – DEC – 1E



Figure 406 – General condition of street sign



Figure 407 – General condition of street sign



Figure 408 – General condition of plantation and lamp
post



Figure 409 – General condition of plantation and lamp post



Figure 410 – General condition of plantation and lamp post



Figure 411 – General condition of plantation and lamp post



Figure 412 – General condition of plantation and lamp post



Figure 413 – General condition of traffic bollard



Figure 414 – General condition of traffic bollard



Figure 415 – General condition of traffic bollard



Figure 416 – General condition of plantation and lamp post



Figure 417 – General condition of plantation and lamp post



Figure 418 – General condition of plantation and lamp post



Figure 419 – General condition of plantation and lamp post



Figure 420 – General condition of plantation and lamp post



Figure 421 – General condition of plantation and lamp post



Figure 422 – General condition of plantation and lamp post



Figure 423 – General condition of plantation and lamp post



Figure 424 – General condition of plantation and lamp post



Figure 425 – General condition of plantation



Figure 426 – General condition of plantation



Figure 427 – General condition of plantation



Figure 428 – General condition of plantation

Comments

The property Tallawong station – P1 Car Park, is the neighbouring property to our client's site. It was photographed and inspected prior to any construction works on the subject site and was found to be in a reasonable condition. The property serves as a car park.

The car park pavement was in a reasonable condition with evidence of cracking and material loss.

At the same time the kerb, gutter and traffic island kerb which accompany the car park were also inspected. At the time of this inspection they were found to be in a reasonable condition. There was evidence of cracking and material loss through the kerb and gutter. Furthermore, evidence of patchwork through the kerb and gutter was observed at the time of the inspection.

The street signs, electricity box, lamp posts, traffic bollards, service pits and stormwater inlet pits were also inspected and were determined to be in a reasonable condition.

Refer to Appendix (A) for photographic records of the above.

Appendix B

P2 Car Park



❖ The map is taken from the Nearmaps website that holds copyright to this content.



Figure 429 – The following images display the condition of P2 Car Park along Tallawong Station



Figure 430 – General condition of car park pavement



Figure 431 – Crack propagation through car park pavement



Figure 432 – General condition of car park pavement



Figure 433 – General condition of car park pavement



Figure 434 – General condition of car park pavement



Figure 435 – Loss of material through car park pavement



Figure 436 – General condition of car park pavement



Figure 437 – General condition of car park pavement



Figure 438 – General condition of car park pavement



Figure 439 – General condition of car park pavement



Figure 440 – General condition of car park pavement



Figure 441 – General condition of car park pavement and service pit



Figure 442 – Crack propagation through car park pavement



Figure 443 – General condition of car park pavement



Figure 444 – General condition of car park pavement



Figure 445 – General condition of car park pavement



Figure 446 – General condition of car park pavement



Figure 447 – General condition of car park pavement



Figure 449 – Crack propagation through car park pavement



Figure 451 – General condition of car park pavement



Figure 448 – Crack propagation through car park pavement



Figure 450 – General condition of car park pavement



Figure 452 – Crack propagation through car park pavement



Figure 453 – Crack propagation through car park pavement



Figure 455 – Crack propagation through car park pavement



Figure 457 – General condition of car park pavement



Figure 454 – General condition of car park pavement



Figure 456 – General condition of car park pavement



Figure 458 – General condition of car park pavement and service pit



Figure 459 – General condition of car park pavement and service pit



Figure 460 – General condition of car park pavement and service pit



Figure 461 – General condition of car park pavement



Figure 462 – General condition of service pit



Figure 463 – Evidence of patchwork through car park pavement



Figure 464 – General condition of car park pavement



Figure 465 – General condition of car park pavement



Figure 467 – General condition of car park pavement



Figure 469 – General condition of car park pavement



Figure 466 – General condition of car park pavement



Figure 468 – General condition of car park pavement



Figure 470 – General condition of car park pavement



Figure 471 – General condition of car park pavement



Figure 472 – General condition of car park pavement



Figure 473 – General condition of car park pavement



Figure 474 – General condition of car park pavement



Figure 475 – General condition of car park pavement



Figure 476 – General condition of car park pavement



Figure 477 – General condition of car park pavement



Figure 479 – General condition of car park pavement



Figure 481 – General condition of car park pavement



Figure 478 – General condition of car park pavement



Figure 480 – General condition of car park pavement



Figure 482 – General condition of car park pavement



Figure 483 – Crack propagation through car park pavement



Figure 484 – General condition of car park pavement



Figure 485 – General condition of car park pavement



Figure 486 – General condition of car park pavement



Figure 487 – General condition of car park pavement



Figure 488 – Evidence of patchwork through car park pavement



Figure 489 – General condition of car park pavement



Figure 490 – General condition of car park pavement



Figure 491 – General condition of car park pavement



Figure 492 – General condition of car park pavement



Figure 493 – General condition of car park pavement



Figure 494 – General condition of car park pavement



Figure 495 – General condition of car park pavement



Figure 497 – General condition of car park pavement



Figure 499 – General condition of car park pavement



Figure 496 – General condition of car park pavement



Figure 498 – General condition of car park pavement



Figure 500 – General condition of car park pavement



Figure 501 – General condition of car park pavement



Figure 502 – General condition of car park pavement



Figure 503 – General condition of car park pavement



Figure 504 – Loss of material through car park pavement



Figure 505 – General condition of car park pavement



Figure 506 – Crack propagation through car park pavement



Figure 507 – Crack propagation through car park pavement



Figure 508 – Crack propagation through car park pavement



Figure 509 – General condition of car park pavement



Figure 510 – General condition of car park pavement



Figure 511 – Crack propagation through car park pavement



Figure 512 – General condition of car park pavement



Figure 513 – General condition of car park pavement



Figure 514 – General condition of car park pavement



Figure 515 – General condition of car park pavement



Figure 516 – General condition of car park pavement



Figure 517 – Crack propagation through car park pavement



Figure 518 – Crack propagation through car park pavement



Figure 519 – General condition of car park pavement



Figure 520 – Crack propagation through car park pavement



Figure 521 – General condition of car park pavement



Figure 522 – General condition of car park pavement



Figure 523 – General condition of car park pavement



Figure 524 – General condition of car park pavement



Figure 525 – General condition of car park pavement



Figure 526 – General condition of car park pavement



Figure 527 – General condition of car park pavement



Figure 528 – General condition of car park pavement



Figure 529 – General condition of car park pavement



Figure 530 – General condition of car park pavement



Figure 531 – General condition of car park pavement



Figure 533 – General condition of car park pavement



Figure 535 – General condition of car park pavement



Figure 532 – General condition of car park pavement



Figure 534 – General condition of car park pavement



Figure 536 – General condition of car park pavement



Figure 537 – Crack propagation through car park pavement



Figure 538 – General condition of car park pavement



Figure 539 – General condition of car park pavement



Figure 540 – General condition of car park pavement



Figure 541 – General condition of car park pavement



Figure 542 – General condition of car park pavement



Figure 543 – General condition of car park pavement



Figure 544 – General condition of car park pavement



Figure 545 – General condition of car park pavement



Figure 546 – General condition of car park pavement



Figure 547 – General condition of car park pavement



Figure 548 – General condition of car park pavement



Figure 549 – General condition of car park pavement



Figure 551 – General condition of car park pavement



Figure 553 – General condition of car park pavement



Figure 550 – General condition of car park pavement



Figure 552 – Crack propagation through car park pavement



Figure 554 – General condition of car park pavement



Figure 555 – General condition of car park pavement



Figure 556 – General condition of car park pavement



Figure 557 – General condition of car park pavement



Figure 558 – General condition of car park pavement



Figure 559 – General condition of car park pavement



Figure 560 – Evidence of patchwork through car park pavement



Figure 561 – General condition of car park pavement



Figure 562 – Crack propagation through car park pavement



Figure 563 – General condition of car park pavement



Figure 564 – General condition of car park pavement



Figure 565 – General condition of car park pavement



Figure 566 – General condition of car park pavement



Figure 567 – General condition of car park pavement



Figure 569 – General condition of car park pavement



Figure 571 – General condition of car park pavement



Figure 568 – General condition of car park pavement



Figure 570 – General condition of car park pavement



Figure 572 – General condition of car park pavement



Figure 573 – General condition of car park pavement



Figure 574 – Crack propagation through car park pavement



Figure 575 – General condition of car park pavement



Figure 576 – General condition of car park pavement



Figure 577 – General condition of car park pavement



Figure 578 – General condition of car park pavement



Figure 579 – General condition of car park pavement



Figure 580 – General condition of car park pavement



Figure 581 – General condition of car park pavement



Figure 582 – General condition of car park pavement



Figure 583 – General condition of car park pavement



Figure 584 – General condition of car park pavement



Figure 585 – General condition of car park pavement



Figure 586 – General condition of car park pavement



Figure 587 – General condition of car park pavement



Figure 588 – General condition of car park pavement



Figure 589 – General condition of car park pavement



Figure 590 – Evidence of patchwork through car park pavement



Figure 591 – General condition of car park pavement



Figure 592 – General condition of car park pavement



Figure 593 – General condition of car park pavement



Figure 594 – General condition of car park pavement



Figure 595 – General condition of car park pavement



Figure 596 – General condition of car park pavement



Figure 597 – General condition of car park pavement



Figure 598 – Crack propagation and loss of material through car park pavement



Figure 599 – Crack propagation and loss of material through car park pavement



Figure 600 – General condition of car park kerb and gutter



Figure 601 – General condition of car park kerb and gutter



Figure 602 – Crack propagation through car park kerb



Figure 603 – Crack propagation and loss of material through car park kerb and gutter



Figure 604 – General condition of kerb inlet pit and stormwater inlet pit



Figure 605 – General condition of car park kerb and gutter



Figure 606 – Crack propagation and loss of material through car park kerb



Figure 607 – General condition of car park kerb and gutter



Figure 608 – Crack propagation through car park kerb



Figure 609 – General condition of car park kerb and gutter



Figure 610 – Crack propagation through car park kerb



Figure 611 – Crack propagation through car park kerb



Figure 612 – Crack propagation through car park kerb and gutter



Figure 613 – Crack propagation through car park kerb



Figure 614 – Crack propagation through car park kerb



Figure 615 – General condition of car park kerb and gutter



Figure 616 – Crack propagation through car park kerb



Figure 617 – Crack propagation through car park kerb and general condition of stormwater inlet pit



Figure 618 – Crack propagation through car park kerb



Figure 619 – General condition of car park kerb and gutter



Figure 620 – General condition of car park kerb and gutter



Figure 621 – General condition of car park kerb and gutter



Figure 622 – Crack propagation through car park kerb



Figure 623 – Crack propagation through car park kerb



Figure 624 – Crack propagation through car park kerb



Figure 625 – Crack propagation and loss of material through car park kerb and gutter



Figure 626 – Crack propagation through car park kerb



Figure 627 – General condition of car park kerb



Figure 628 – Crack propagation through car park kerb



Figure 629 – Crack propagation through car park kerb



Figure 630 – General condition of car park kerb



Figure 631 – Crack propagation through car park kerb



Figure 632 – Crack propagation through car park kerb



Figure 633 – General condition of car park kerb



Figure 634 – General condition of car park kerb



Figure 635 – Crack propagation through car park kerb



Figure 636 – Crack propagation through car park kerb



Figure 637 – Crack propagation through car park kerb



Figure 638 – Crack propagation through car park kerb



Figure 639 – General condition of car park kerb



Figure 640 – Crack propagation through car park kerb



Figure 641 – General condition of car park kerb



Figure 642 – Crack propagation through car park kerb



Figure 643 – Crack propagation through car park kerb



Figure 644 – General condition of car park kerb



Figure 645 – General condition of car park kerb



Figure 646 – Crack propagation through car park kerb



Figure 647 – Crack propagation through car park kerb



Figure 648 – Crack propagation through car park kerb



Figure 649 – Crack propagation through car park kerb



Figure 650 – General condition of car park kerb



Figure 651 – General condition of car park kerb



Figure 652 – Crack propagation through car park kerb



Figure 653 – General condition of traffic island kerb



Figure 654 – Hairline cracking through traffic island kerb



Figure 655 – General condition of traffic island kerb



Figure 656 – General condition of traffic island kerb



Figure 657 – General condition of traffic island kerb



Figure 658 – General condition of traffic island kerb



Figure 659 – General condition of traffic island kerb



Figure 660 – General condition of traffic island kerb



Figure 661 – Crack propagation through traffic island kerb



Figure 662 – Crack propagation through traffic island kerb



Figure 663 – Crack propagation through traffic island kerb



Figure 664 – General condition of traffic island kerb



Figure 665 – General condition of traffic island kerb



Figure 666 – Loss of material through traffic island kerb

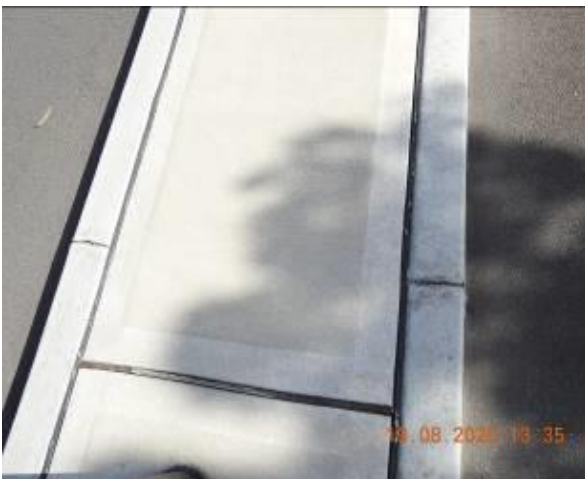


Figure 667 – General condition of traffic island kerb



Figure 668 – General condition of traffic island kerb



Figure 669 – Crack propagation through traffic island kerb



Figure 670 – General condition of traffic island kerb



Figure 671 – General condition of traffic island kerb



Figure 672 – General condition of traffic island kerb



Figure 673 – Crack propagation through traffic island kerb



Figure 674 – Crack propagation through traffic island kerb



Figure 675 – Crack propagation through traffic island kerb



Figure 676 – General condition of traffic island kerb



Figure 677 – Crack propagation through traffic island kerb



Figure 678 – General condition of traffic island kerb



Figure 679 – Crack propagation through traffic island kerb



Figure 680 – Crack propagation through traffic island kerb



Figure 681 – Crack propagation through traffic island kerb



Figure 682 – Crack propagation through traffic island kerb



Figure 683 – General condition of traffic island kerb



Figure 684 – Crack propagation through traffic island kerb



Figure 685 – Crack propagation through traffic island kerb



Figure 686 – Crack propagation through traffic island kerb



Figure 687 – General condition of traffic island kerb



Figure 688 – Crack propagation through traffic island kerb



Figure 689 – Crack propagation through traffic island kerb



Figure 690 – Crack propagation through traffic island kerb



Figure 691 – Crack propagation through traffic island kerb



Figure 692 – Crack propagation through traffic island kerb



Figure 693 – General condition of traffic island kerb



Figure 694 – General condition of traffic island kerb



Figure 695 – General condition of traffic island kerb



Figure 696 – General condition of traffic island kerb



Figure 697 – Loss of material through traffic island kerb



Figure 698 – Loss of material through traffic island kerb



Figure 699 – General condition of service pit



Figure 700 – Crack propagation through car park kerb



Figure 701 – Crack propagation through car park kerb



Figure 702 – General condition of car park kerb



Figure 703 – General condition of car park kerb



Figure 704 – General condition of car park kerb



Figure 705 – General condition of car park kerb and gutter



Figure 706 – General condition of car park kerb and gutter



Figure 707 – Crack propagation through car park kerb and gutter



Figure 708 – General condition of car park kerb and gutter



Figure 709 – General condition of car park kerb and gutter



Figure 710 – Crack propagation through car park kerb



Figure 711 – Crack propagation through car park gutter



Figure 713 – Crack propagation through car park kerb



Figure 715 – Crack propagation through car park kerb



Figure 712 – General condition of car park kerb and gutter



Figure 714 – General condition of car park kerb and gutter



Figure 716 – General condition of plantation



Figure 717 – Crack propagation through car park gutter



Figure 718 – General condition of plantation



Figure 719 – General condition of car park kerb and gutter



Figure 720 – General condition of car park kerb



Figure 721 – General condition of car park kerb



Figure 722 – Crack propagation and loss of material through car park kerb



Figure 723 – General condition of car park kerb



Figure 724 – General condition of car park kerb



Figure 725 – General condition of car park kerb and service pit



Figure 726 – General condition of car park kerb and service pit



Figure 727 – General condition of stormwater inlet pit



Figure 728 – Crack propagation through car park kerb and General condition of service pit



Figure 729 – General condition of car park kerb and service pit



Figure 730 – Crack propagation through car park kerb and General condition of service pit



Figure 731 – General condition of car park kerb and service pit



Figure 732 – Crack propagation through car park kerb and General condition of service pit



Figure 733 – General condition of car park kerb and service pit



Figure 734 – General condition of car park kerb and service pit



Figure 735 – Crack propagation through car park kerb and General condition of service pit



Figure 736 – General condition of stormwater inlet pit



Figure 737 – General condition of car park kerb and service pit



Figure 738 – Crack propagation through car park kerb and General condition of service pit



Figure 739 – General condition of car park kerb and service pit



Figure 740 – General condition of car park kerb and service pit



Figure 741 – General condition of car park kerb and service pit



Figure 742 – Crack propagation and loss of material through car park kerb and General condition of service pit



Figure 743 – General condition of car park kerb and service pit



Figure 744 – Crack propagation through car park kerb and General condition of service pit



Figure 745 – General condition of car park kerb



Figure 746 – General condition of car park kerb



Figure 747 – Loss of material through car park kerb



Figure 748 – General condition of car park kerb



Figure 749 – General condition of car park kerb



Figure 750 – Crack propagation through car park kerb



Figure 751 – General condition of service pit



Figure 752 – Crack propagation through car park kerb



Figure 753 – General condition of car park kerb



Figure 754 – General condition of car park kerb



Figure 755 – General condition of car park kerb



Figure 756 – Crack propagation through car park kerb



Figure 757 – Crack propagation through car park kerb and General condition of service pit



Figure 758 – General condition of car park kerb



Figure 759 – Crack propagation through car park kerb and General condition of service pit



Figure 760 – Crack propagation through car park kerb and General condition of service pit



Figure 761 – Crack propagation through car park kerb and General condition of service pit



Figure 762 – General condition of car park kerb



Figure 763 – Crack propagation through car park kerb and General condition of service pit



Figure 764 – Crack propagation through car park kerb and General condition of service pit



Figure 765 – Crack propagation through car park kerb and General condition of service pit



Figure 766 – General condition of car park kerb

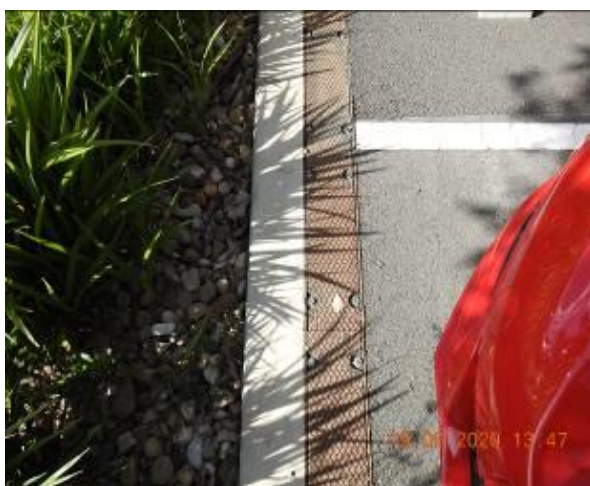


Figure 767 – Crack propagation through car park kerb and service pit



Figure 768 – Crack propagation through car park kerb and service pit



Figure 769 – Crack propagation through car park kerb and service pit



Figure 770 – Crack propagation through car park kerb and service pit



Figure 771 – General condition of car park kerb



Figure 772 – Crack propagation through car park kerb and service pit



Figure 773 – General condition of car park kerb



Figure 774 – General condition of car park kerb



Figure 775 – General condition of car park kerb



Figure 776 – General condition of car park kerb and gutter

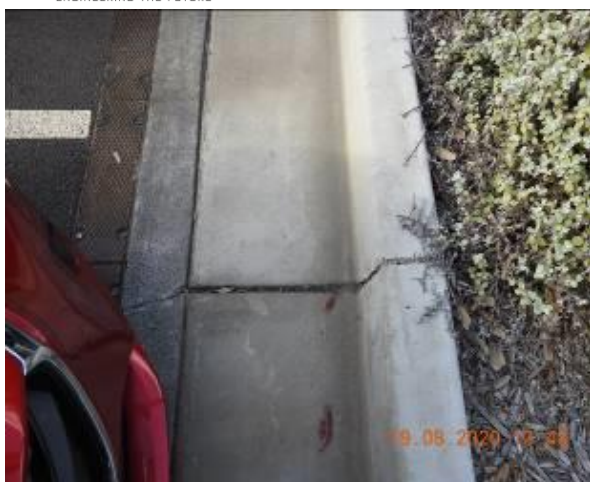


Figure 777 – Crack propagation through car park kerb and gutter



Figure 778 – General condition of car park kerb and gutter



Figure 779 – Crack propagation through car park gutter



Figure 780 – General condition of stormwater inlet pit



Figure 781 – Crack propagation through car park gutter



Figure 782 – General condition of car park kerb and gutter



Figure 783 – Hairline cracking through car park kerb



Figure 784 – General condition of car park kerb and gutter



Figure 785 – General condition of car park kerb and gutter



Figure 786 – General condition of car park kerb and gutter



Figure 787 – General condition of kerb inlet pit



Figure 788 – General condition of car park kerb and gutter



Figure 789 – General condition of car park kerb and gutter



Figure 790 – General condition of car park kerb and gutter



Figure 791 – Crack propagation through car park gutter



Figure 792 – General condition of car park kerb and gutter



Figure 793 – General condition of car park kerb and gutter



Figure 794 – General condition of stormwater inlet pit



Figure 795 – General condition of kerb inlet pit



Figure 796 – General condition of car park kerb and gutter



Figure 797 – General condition of car park kerb and gutter



Figure 798 – Crack propagation through car park kerb and gutter



Figure 799 – Crack propagation through car park kerb gutter



Figure 800 – Crack propagation through car park kerb gutter



Figure 801 – General condition of car park kerb and gutter



Figure 802 – Crack propagation through car park kerb



Figure 803 – General condition of car park kerb and gutter



Figure 804 – General condition of car park kerb and gutter

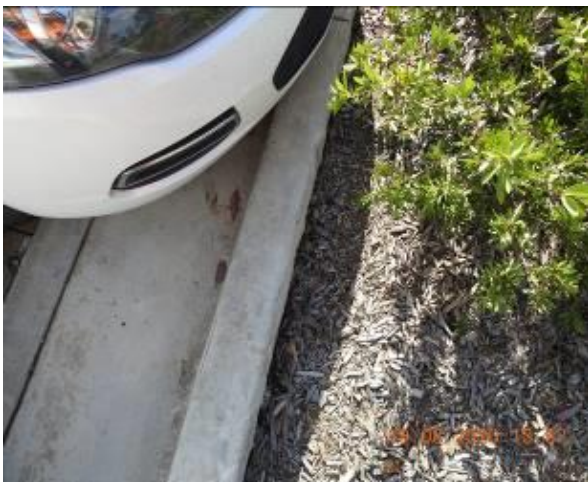


Figure 805 – Hairline cracking through car park kerb



Figure 806 – Crack propagation through car park kerb and gutter



Figure 807 – Hairline cracking through car park kerb and gutter



Figure 808 – Crack propagation through car park kerb and gutter



Figure 809 – General condition of car park kerb and gutter



Figure 810 – General condition of car park kerb and gutter



Figure 811 – General condition of car park kerb

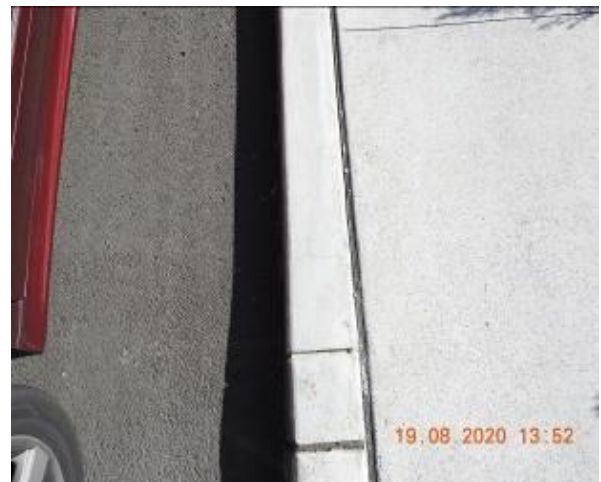


Figure 812 – Hairline cracking through car park kerb



Figure 813 – General condition of car park kerb



Figure 814 – Crack propagation through car park kerb



Figure 815 – General condition of car park kerb



Figure 816 – Crack propagation through car park kerb



Figure 817 – General condition of car park kerb



Figure 818 – General condition of car park kerb



Figure 819 – General condition of car park kerb



Figure 820 – General condition of car park kerb



Figure 821 – General condition of car park kerb



Figure 822 – Hairline cracking through car park kerb



Figure 823 – Hairline cracking through car park kerb



Figure 824 – General condition of car park kerb



Figure 825 – General condition of car park kerb



Figure 826 – General condition of car park kerb



Figure 827 – General condition of car park kerb



Figure 828 – General condition of car park kerb



Figure 829 – Crack propagation through car park kerb



Figure 830 – Crack propagation through car park kerb



Figure 831 – Crack propagation through car park kerb



Figure 832 – Crack propagation through car park kerb



Figure 833 – Crack propagation through car park kerb



Figure 834 – Crack propagation through car park kerb



Figure 835 – General condition of car park kerb



Figure 836 – Crack propagation through car park kerb



Figure 837 – General condition of car park kerb



Figure 838 – General condition of car park kerb



Figure 839 – Crack propagation through car park kerb



Figure 840 – Crack propagation through car park kerb



Figure 841 – Crack propagation through car park kerb



Figure 842 – General condition of car park kerb



Figure 843 – Hairline cracking through car park kerb



Figure 844 – Hairline cracking through car park kerb



Figure 845 – Hairline cracking through car park kerb



Figure 846 – General condition of car park pavement



Figure 847 – General condition of car park kerb and gutter

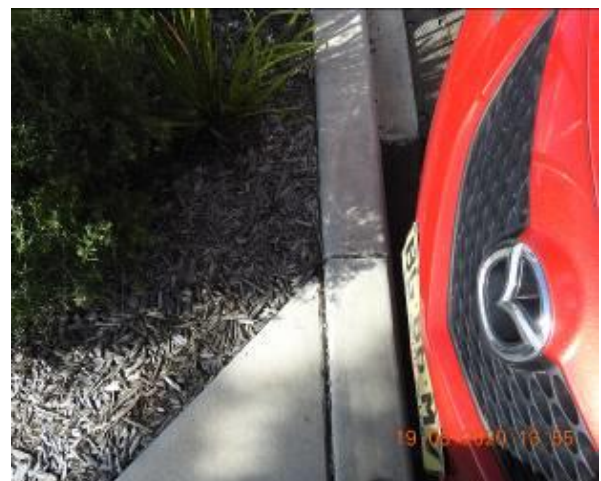


Figure 848 – Crack propagation through car park kerb



Figure 849 – Crack propagation through car park kerb



Figure 850 – Crack propagation through car park kerb and gutter



Figure 851 – Crack propagation through car park gutter



Figure 852 – Crack propagation through car park gutter



Figure 853 – Crack propagation through car park kerb and gutter



Figure 854 – General condition of car park kerb and gutter



Figure 855 – Crack propagation through car park kerb



Figure 856 – Crack propagation through car park kerb and gutter



Figure 857 – Crack propagation through car park kerb and gutter



Figure 858 – General condition of car park kerb and gutter



Figure 859 – General condition of car park kerb and gutter



Figure 860 – Crack propagation through car park gutter



Figure 861 – Hairline cracking through car park kerb



Figure 862 – Hairline cracking through car park kerb



Figure 863 – General condition of car park kerb



Figure 864 – General condition of car park kerb



Figure 865 – General condition of car park kerb



Figure 866 – General condition of car park kerb



Figure 867 – General condition of car park kerb



Figure 868 – General condition of car park kerb



Figure 869 – Hairline cracking through car park kerb



Figure 870 – Crack propagation through car park kerb



Figure 871 – General condition of General condition of car park kerb



Figure 872 – General condition of kerb inlet pit



Figure 873 – Crack propagation through car park kerb



Figure 874 – Crack propagation through car park kerb and gutter



Figure 875 – Hairline cracking through car park kerb

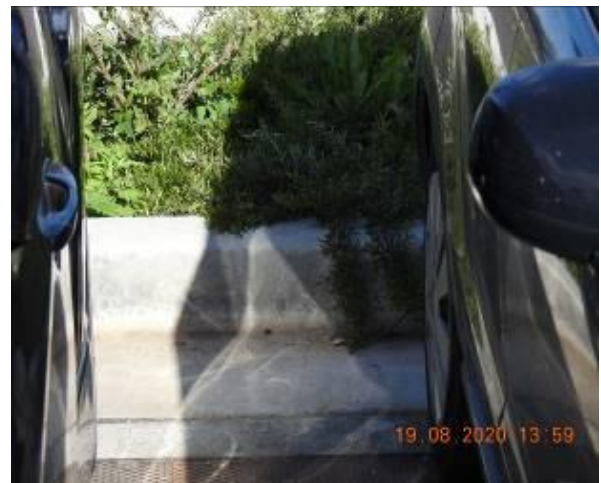


Figure 876 – Hairline cracking through car park kerb



Figure 877 – General condition of car park kerb



Figure 878 – Hairline cracking through car park kerb



Figure 879 – General condition of car park kerb and gutter



Figure 880 – General condition of car park kerb and gutter



Figure 881 – General condition of car park kerb and gutter



Figure 882 – Hairline cracking through car park kerb



Figure 883 – Hairline cracking through car park kerb



Figure 884 – General condition of car park kerb



Figure 885 – General condition of car park kerb



Figure 886 – General condition of car park kerb



Figure 887 – Crack propagation through car park kerb



Figure 888 – General condition of car park kerb



Figure 889 – General condition of car park kerb



Figure 890 – Hairline cracking through car park kerb



Figure 891 – Crack propagation through car park kerb



Figure 892 – Crack propagation through car park kerb



Figure 893 – Crack propagation through car park kerb



Figure 894 – Crack propagation through car park kerb



Figure 895 – Crack propagation through car park kerb



Figure 896 – Crack propagation through car park kerb



Figure 897 – Crack propagation through car park kerb



Figure 898 – General condition of car park kerb



Figure 899 – Crack propagation through car park kerb



Figure 900 – General condition of car park kerb



Figure 901 – Crack propagation through car park kerb



Figure 902 – Crack propagation through car park kerb



Figure 903 – Crack propagation through car park kerb



Figure 904 – Crack propagation through car park kerb



Figure 905 – General condition of car park kerb



Figure 906 – Crack propagation through car park kerb



Figure 907 – Crack propagation through car park kerb



Figure 908 – General condition of car park kerb



Figure 909 – General condition of car park kerb



Figure 910 – General condition of car park kerb



Figure 911 – Crack propagation through car park kerb



Figure 912 – Hairline cracking through car park kerb



Figure 913 – General condition of car park kerb



Figure 914 – Evidence of patchwork through car park kerb



Figure 915 – General condition of car park kerb



Figure 917 – General condition of car park kerb and gutter



Figure 919 – Hairline cracking through car park kerb



Figure 916 – General condition of car park kerb and gutter



Figure 918 – General condition of car park kerb and gutter



Figure 920 – General condition of car park kerb and gutter



Figure 921 – Crack propagation through car park kerb and gutter



Figure 922 – Crack propagation through car park gutter



Figure 923 – General condition of car park kerb and gutter



Figure 924 – General condition of car park kerb and gutter



Figure 925 – General condition of kerb inlet pit



Figure 926 – Crack propagation through car park kerb



Figure 927 – General condition of car park kerb and gutter



Figure 928 – General condition of car park kerb and gutter



Figure 929 – General condition of car park kerb and gutter



Figure 930 – General condition of car park kerb and gutter



Figure 931 – General condition of car park kerb inlet pit



Figure 932 – General condition of car park kerb inlet pit



Figure 933 – Crack propagation through car park gutter



Figure 934 – General condition of car park kerb and gutter



Figure 935 – General condition of car park kerb and gutter



Figure 936 – Hairline cracking through car park kerb



Figure 937 – Hairline cracking through car park kerb



Figure 938 – Hairline cracking through car park kerb



Figure 939 – Hairline cracking through car park kerb



Figure 940 – General condition of car park kerb and gutter



Figure 941 – General condition of car park kerb and gutter



Figure 942 – General condition of car park kerb and gutter

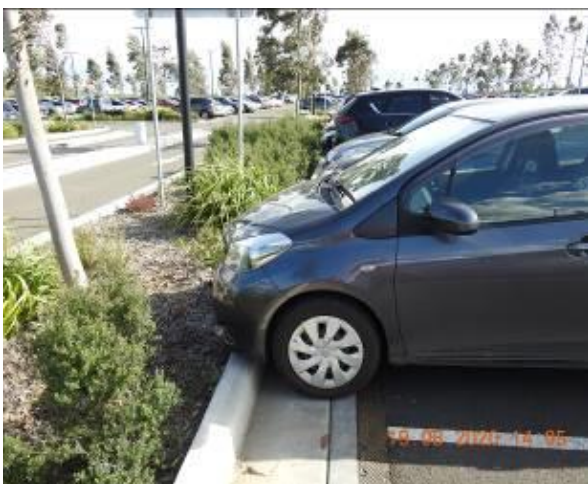


Figure 943 – General condition of car park kerb and gutter



Figure 944 – Hairline cracking through car park gutter



Figure 945 – Crack propagation through car park kerb



Figure 946 – General condition of plantation



Figure 947 – General condition of car park kerb



Figure 948 – Hairline cracking through car park kerb



Figure 949 – General condition of plantation



Figure 950 – General condition of car park kerb



Figure 951 – Crack propagation through car park kerb



Figure 952 – Crack propagation through car park kerb



Figure 953 – Crack propagation through car park kerb



Figure 954 – Crack propagation through car park kerb



Figure 955 – General condition of car park kerb



Figure 956 – Crack propagation through car park kerb



Figure 957 – General condition of car park kerb



Figure 958 – General condition of car park kerb



Figure 959 – General condition of car park kerb



Figure 960 – Crack propagation through car park kerb



Figure 961 – Crack propagation through car park kerb



Figure 962 – General condition of car park kerb



Figure 963 – Crack propagation through car park kerb



Figure 964 – Crack propagation through car park kerb



Figure 965 – Crack propagation through car park kerb



Figure 966 – General condition of car park kerb



Figure 967 – General condition of car park kerb



Figure 968 – Crack propagation through car park kerb



Figure 969 – General condition of car park kerb



Figure 970 – Crack propagation through car park kerb



Figure 971 – Crack propagation through car park kerb



Figure 972 – Crack propagation through car park kerb



Figure 973 – General condition of car park kerb



Figure 974 – General condition of car park kerb



Figure 975 – General condition of car park kerb



Figure 976 – General condition of car park kerb



Figure 977 – General condition of car park kerb



Figure 978 – Crack propagation through car park kerb



Figure 979 – General condition of car park kerb



Figure 980 – General condition of car park kerb



Figure 981 – Crack propagation through car park kerb



Figure 982 – General condition of car park kerb



Figure 983 – General condition of car park kerb



Figure 984 – Hairline cracking through car park kerb



Figure 985 – Hairline cracking through car park kerb



Figure 986 – Hairline cracking through car park kerb



Figure 987 – General condition of car park kerb



Figure 988 – General condition of car park kerb



Figure 989 – General condition of car park kerb



Figure 990 – General condition of car park kerb



Figure 991 – General condition of car park kerb



Figure 992 – General condition of car park kerb



Figure 993 – Crack propagation through car park kerb



Figure 994 – General condition of car park layback

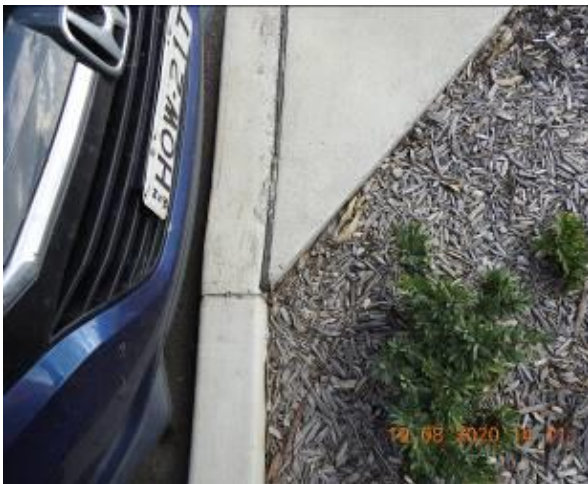


Figure 995 – Crack propagation through car park kerb



Figure 996 – Crack propagation through car park layback



Figure 997 – General condition of car park kerb



Figure 998 – Crack propagation through car park kerb



Figure 999 – Crack propagation through car park kerb



Figure 1000 – Crack propagation through car park kerb



Figure 1001 – General condition of car park kerb



Figure 1002 – Crack propagation through car park kerb



Figure 1003 – General condition of car park kerb



Figure 1004 – Crack propagation through car park kerb



Figure 1005 – General condition of car park kerb



Figure 1006 – Crack propagation through car park kerb



Figure 1007 – General condition of car park kerb



Figure 1008 – Crack propagation through car park kerb



Figure 1009 – Crack propagation through car park kerb



Figure 1010 – Crack propagation through car park kerb



Figure 1011 – General condition of car park kerb



Figure 1012 – Crack propagation through car park kerb



Figure 1013 – Crack propagation through car park kerb



Figure 1014 – General condition of car park kerb



Figure 1015 – Crack propagation through car park kerb



Figure 1016 – General condition of car park kerb



Figure 1017 – Hairline cracking through car park kerb



Figure 1018 – General condition of car park kerb



Figure 1019 – Crack propagation through car park kerb



Figure 1020 – General condition of car park kerb

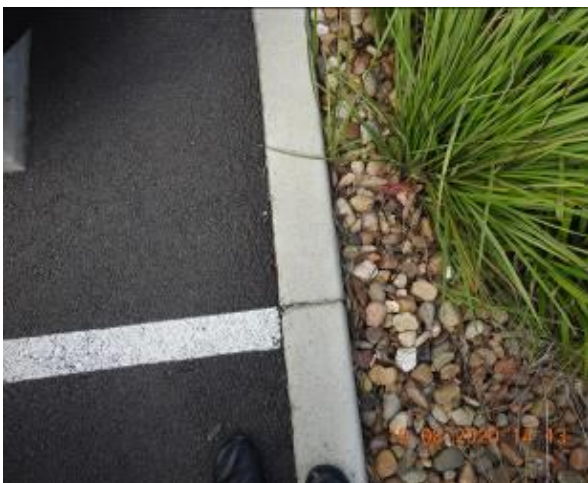


Figure 1021 – Crack propagation through car park kerb



Figure 1022 – Crack propagation through car park kerb



Figure 1023 – General condition of car park kerb



Figure 1024 – General condition of car park kerb



Figure 1025 – General condition of car park kerb



Figure 1026 – General condition of car park kerb



Figure 1027 – General condition of car park kerb



Figure 1028 – Crack propagation through car park kerb



Figure 1029 – Crack propagation through car park kerb



Figure 1030 – General condition of stormwater inlet pit



Figure 1031 – General condition of car park kerb



Figure 1032 – General condition of car park kerb



Figure 1033 – General condition of car park kerb



Figure 1034 – General condition of car park kerb



Figure 1035 – General condition of car park kerb



Figure 1036 – Crack propagation through car park kerb



Figure 1037 – General condition of car park kerb



Figure 1038 – Crack propagation through car park kerb



Figure 1039 – General condition of car park kerb



Figure 1040 – General condition of car park kerb



Figure 1041 – General condition of stormwater inlet pit



Figure 1042 – Crack propagation through car park kerb



Figure 1043 – General condition of car park kerb



Figure 1044 – Crack propagation through car park kerb



Figure 1045 – Crack propagation through car park kerb and general condition of service pit



Figure 1046 – Crack propagation through car park kerb



Figure 1047 – General condition of car park kerb



Figure 1048 – General condition of car park kerb



Figure 1049 – General condition of car park kerb



Figure 1050 – Crack propagation through car park kerb



Figure 1051 – Crack propagation through car park kerb



Figure 1052 – General condition of car park kerb



Figure 1053 – Crack propagation through car park kerb



Figure 1054 – General condition of car park kerb



Figure 1055 – Crack propagation through car park kerb



Figure 1056 – Crack propagation through car park kerb



Figure 1057 – General condition of car park kerb

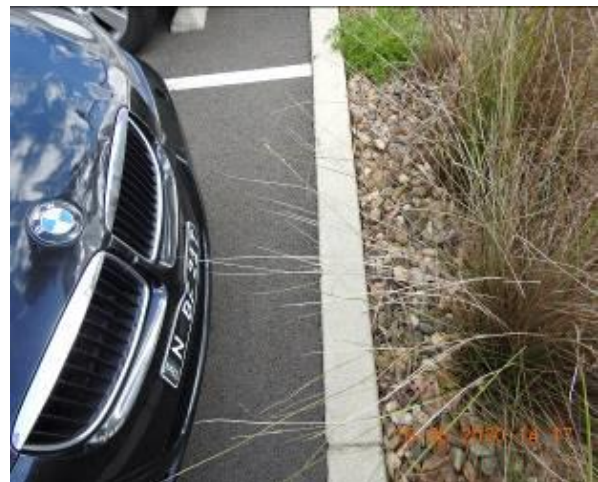


Figure 1058 – Crack propagation through car park kerb



Figure 1059 – General condition of car park kerb



Figure 1060 – General condition of car park kerb



Figure 1061 – General condition of car park kerb



Figure 1062 – Crack propagation through car park kerb



Figure 1063 – General condition of car park kerb



Figure 1064 – General condition of car park kerb



Figure 1065 – General condition of car park kerb



Figure 1066 – General condition of car park kerb



Figure 1067 – General condition of car park kerb



Figure 1068 – Crack propagation through car park kerb



Figure 1069 – General condition of car park kerb



Figure 1070 – General condition of car park kerb



Figure 1071 – General condition of car park kerb



Figure 1072 – Crack propagation through car park kerb



Figure 1073 – General condition of car park kerb



Figure 1074 – Crack propagation through car park kerb



Figure 1075 – General condition of car park kerb



Figure 1076 – Crack propagation through car park kerb



Figure 1077 – Crack propagation through car park kerb



Figure 1078 – General condition of car park kerb



Figure 1079 – Crack propagation through car park kerb



Figure 1080 – Crack propagation through car park kerb



Figure 1081 – Crack propagation through car park kerb



Figure 1082 – Crack propagation through car park kerb



Figure 1083 – Crack propagation through car park kerb



Figure 1084 – Crack propagation through car park kerb



Figure 1085 – Crack propagation through car park kerb



Figure 1086 – General condition of car park kerb



Figure 1087 – General condition of car park kerb



Figure 1088 – General condition of car park kerb



Figure 1089 – Crack propagation through car park kerb



Figure 1090 – Crack propagation through car park kerb



Figure 1091 – General condition of car park kerb



Figure 1092 – Crack propagation through car park kerb



Figure 1093 – General condition of car park kerb



Figure 1094 – General condition of service pit



Figure 1095 – General condition of car park kerb



Figure 1096 – Crack propagation through car park kerb



Figure 1097 – Crack propagation through car park kerb



Figure 1098 – General condition of car park kerb



Figure 1099 – Crack propagation through car park kerb



Figure 1100 – General condition of car park kerb



Figure 1101 – General condition of stormwater inlet pit



Figure 1102 – General condition of stormwater inlet pit



Figure 1103 – General condition of car park kerb



Figure 1104 – General condition of car park kerb



Figure 1105 – General condition of car park kerb



Figure 1106 – General condition of car park kerb



Figure 1107 – General condition of car park kerb



Figure 1108 – General condition of car park kerb



Figure 1109 – General condition of car park kerb



Figure 1110 – General condition of car park kerb



Figure 1111 – General condition of car park kerb



Figure 1112 – General condition of car park kerb



Figure 1113 – General condition of car park kerb



Figure 1114 – General condition of car park kerb



Figure 1115 – General condition of car park kerb

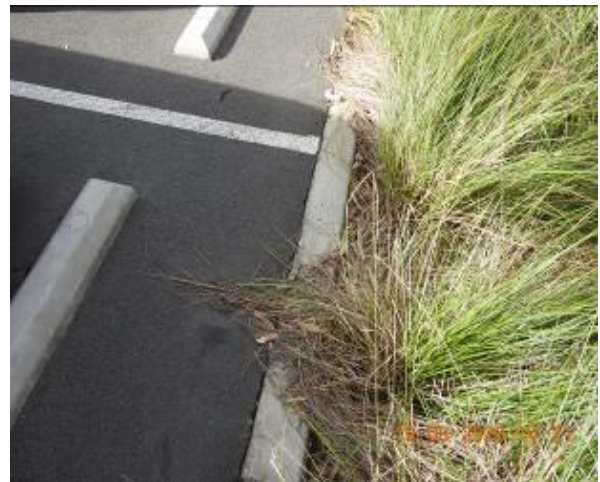


Figure 1116 – General condition of car park kerb

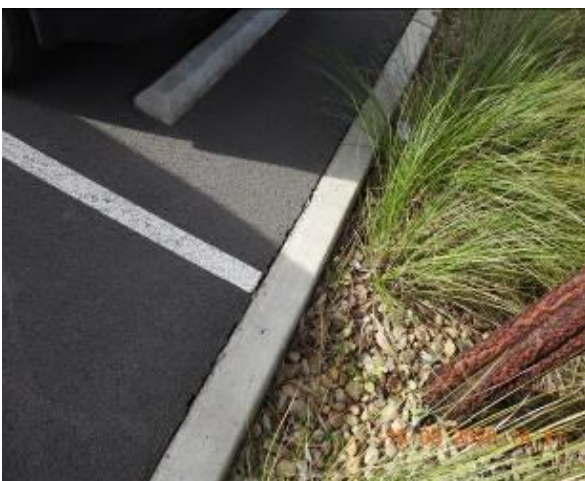


Figure 1117 – General condition of car park kerb



Figure 1118 – General condition of car park kerb



Figure 1119 – General condition of car park kerb



Figure 1120 – General condition of car park kerb



Figure 1121 – General condition of car park kerb



Figure 1122 – General condition of car park kerb



Figure 1123 – General condition of car park kerb

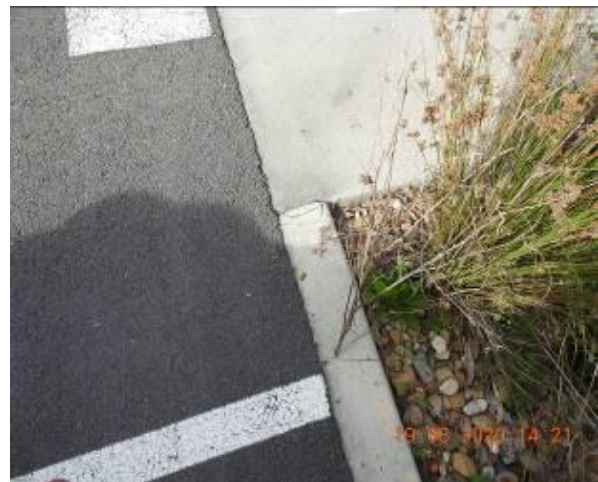


Figure 1124 – Crack propagation through car park kerb



Figure 1125 – General condition of car park kerb



Figure 1126 – Crack propagation through car park kerb



Figure 1127 – Crack propagation through car park kerb



Figure 1128 – Crack propagation through car park kerb



Figure 1129 – Crack propagation through car park kerb



Figure 1130 – Crack propagation through car park kerb



Figure 1131 – General condition of car park kerb



Figure 1132 – General condition of car park pavement



Figure 1133 – General condition of car park kerb



Figure 1134 – General condition of car park kerb



Figure 1135 – Crack propagation through car park kerb



Figure 1136 – General condition of car park kerb



Figure 1137 – Crack propagation through car park kerb



Figure 1138 – Crack propagation through car park kerb



Figure 1139 – Crack propagation through car park kerb



Figure 1140 – Crack propagation through car park kerb



Figure 1141 – Crack propagation through car park kerb



Figure 1142 – Crack propagation through car park kerb



Figure 1143 – Crack propagation through car park kerb



Figure 1144 – Crack propagation through car park kerb



Figure 1145 – General condition of car park kerb



Figure 1146 – General condition of car park kerb



Figure 1147 – Crack propagation through car park kerb



Figure 1148 – General condition of car park kerb



Figure 1149 – Crack propagation through car park kerb



Figure 1150 – Crack propagation through car park kerb



Figure 1151 – Crack propagation through car park kerb



Figure 1152 – General condition of car park kerb



Figure 1153 – General condition of car park kerb



Figure 1154 – Crack propagation through car park kerb



Figure 1155 – General condition of car park kerb



Figure 1156 – General condition of car park kerb



Figure 1157 – General condition of car park kerb



Figure 1158 – General condition of car park kerb



Figure 1159 – Crack propagation through car park kerb



Figure 1160 – Crack propagation through car park kerb



Figure 1161 – General condition of car park kerb



Figure 1162 – General condition of car park kerb



Figure 1163 – General condition of car park kerb



Figure 1164 – Crack propagation through car park kerb



Figure 1165 – General condition of car park kerb



Figure 1166 – Crack propagation through car park kerb



Figure 1167 – Crack propagation through car park kerb



Figure 1168 – Crack propagation through car park kerb



Figure 1169 – Crack propagation through car park kerb



Figure 1170 – Crack propagation through car park kerb



Figure 1171 – General condition of car park kerb



Figure 1172 – Crack propagation through car park kerb



Figure 1173 – Crack propagation through car park kerb



Figure 1174 – Crack propagation through car park kerb



Figure 1175 – General condition of car park kerb



Figure 1176 – General condition of car park kerb



Figure 1177 – General condition of service pit



Figure 1178 – General condition of car park kerb



Figure 1179 – General condition of car park kerb



Figure 1180 – Crack propagation through car park kerb



Figure 1181 – General condition of car park kerb



Figure 1182 – General condition of car park kerb



Figure 1183 – Crack propagation through car park kerb



Figure 1184 – General condition of service pit



Figure 1185 – General condition of car park kerb



Figure 1186 – General condition of car park kerb



Figure 1187 – General condition of car park kerb



Figure 1188 – General condition of car park kerb



Figure 1189 – General condition of car park kerb



Figure 1190 – Crack propagation through car park kerb



Figure 1191 – General condition of car park kerb



Figure 1192 – General condition of car park kerb



Figure 1193 – General condition of stormwater inlet pit



Figure 1194 – General condition of car park kerb



Figure 1195 – Crack propagation and loss of material through car park kerb



Figure 1196 – Crack propagation through car park kerb