

From: Chris Lauritzen <Chris.Lauritzen@machenergy.com.au>
Date: Monday, 20 January 2020 at 7:35 pm
To: "shirley.hibbs@planning.nsw.gov.au" <shirley.hibbs@planning.nsw.gov.au>
Cc: "Lauren.Evans@planning.nsw.gov.au" <Lauren.Evans@planning.nsw.gov.au>, Stirling Bartlam <sbartlam@ResourceStrategies.com.au>
Subject: Spatial Data request - Mount Pleasant Optimisation Project - SSD-10418

Dear Shirley,

In response to your request, attached are zip files containing the relevant Mount Pleasant Optimisation Project Provisional Development Application Area and key components of the Project as shown on Figure 4 of the Scoping Report in the requested formats.

MACH Energy notes that the requested files comprise Scoping Stage polygons, which are therefore provisional and subject to change during EIS preparation.

Happy to discuss.





Kind regards,

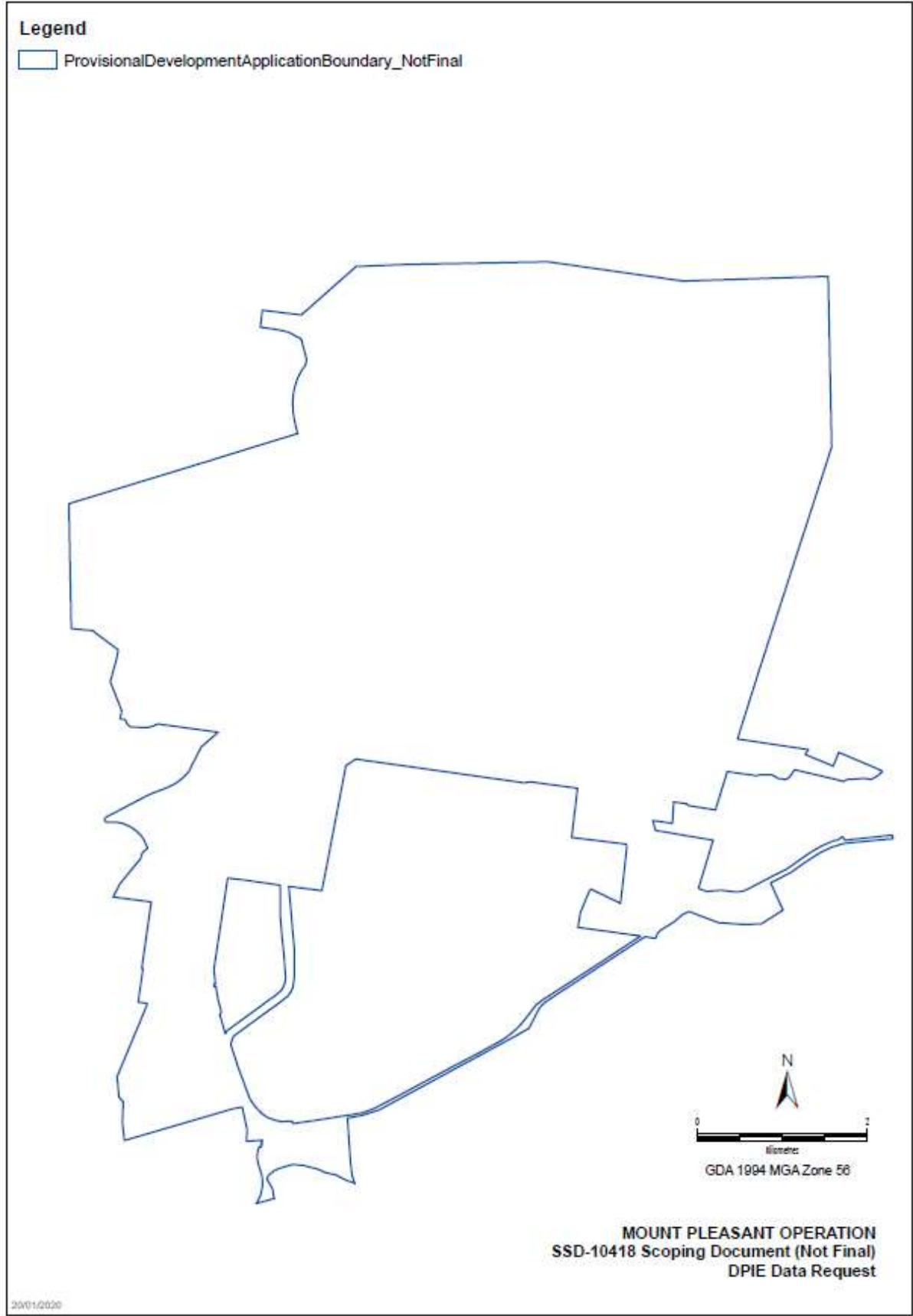
Chris Lauritzen
General Manager – Resource Development
MACH Energy Australia Pty Ltd
PO Box 2115 | Dangar | NSW 2309
e: chris.lauritzen@machenergyaustralia.com.au
www.machenergyaustralia.com.au



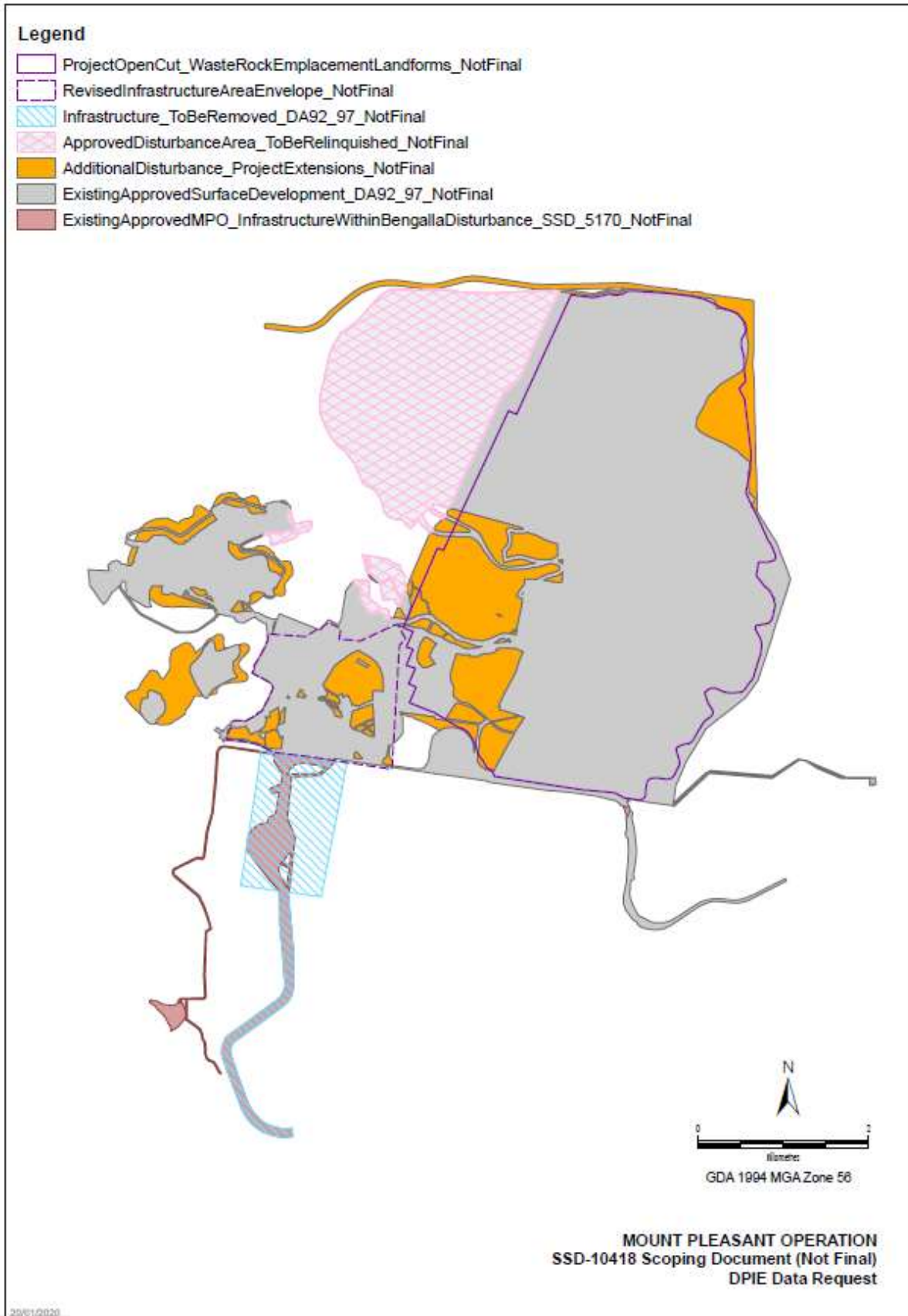
The information contained in this email, including any attachments, is proprietary and confidential. If you are not the intended recipient, use of this information is unauthorized, please notify the sender and delete this message. This email may be personal and therefore not representative of the views of MACH Energy Australia Pty Ltd. No part of the material contained in this email may be reproduced, adapted or communicated without the written consent of the copyright owner. Internet communication is not secure, therefore MACH Energy Australia Pty Ltd does not guarantee the accuracy of the information contained within, nor does it accept legal responsibility for the contents of this message or any attached files.

Attachments:

 SSD-10418_Scoping Report_Key Features_NOT FINAL.zip 98 KB	 SSD-10418_Scoping Report_Provisional DA_NOT FINAL.zip 8 KB
 MACH SSD-10418_Scoping Report_Key Features_Not Final.pdf 160 KB	 MACH SSD-10418_Scoping Report_Provisional DA Boundary_Not Final.pdf 82 KB



MACH SSD-10418_Scoping Report_Key Features_Not Final.pdf:



From: Shirley Hibbs

Sent: Monday, 13 January 2020 4:09 PM

To: info@machenergyaustralia.com.au

Subject: Spatial Data request - Mount Pleasant Optimisation Project - SSD-10418

Dear proponent

Please supply the following shapefile(s) and/or coordinates to enable the Division's internal mapping and assessment of the project:

- The project/development application area(s)
- Key features within the project area (for example mine extraction area, ventilation shafts, underground entry portal/box cut, mine infrastructure area, rail loop, ancillary dam etc.)

Please keep discreet project features in separate files and labelled clearly to demarcate from the main project area.

Data must be supplied in GDA 1994 MGA coordinate system, UTM projection and shape files in ESRI shape file format.

Kind regards

Shirley Hibbs
Assessment Coordination Unit

Resource Operations

Division of Resources & Geoscience | Department of Planning, Industry and Environment

T 02 4063 6757 | E shirley.hibbs@planning.nsw.gov.au

516 High Street Maitland NSW 2320 | PO Box 344 Hunter Region Mail Centre NSW 2310

Please note that I will be on Christmas leave from 20 December 2019 to 9 January 2020, returning on 13 January 2020 inclusive..



www.resourcesandgeoscience.nsw.gov.au



Subscribe to our [newsletter](#)