

DESIGN STATEMENT

POWERHOUSE PARRAMATTA

EASTERN BUILDING ROOFTOP PAVILION
& ST GEORGE'S TERRACE

MOREAU KUSUNOKI | GENTON | MCGREGOR COXALL

8 DECEMBER 2021

Contents

I. PAVILION 5

Pavilion Brief

Pavilion Design

Pavilion - Material Board

II. ST GEORGES TERRACE 13

St George’s Terrace Brief

St George’s Terrace Design

St George’s Terrace - Material Board

APPENDIX 19

Contact

Lead Designer
Moreau Kusunoki
5 Rue de Nemours 75011 Paris France

Local Architect
Genton
Level C/71 York Street Sydney 2000 NSW

Landscape Architect
McGregor Coxall
Level 1/39 E Esplanade Manly 2095 NSW



I. PAVILION

The Pavilion is located on top of the Eastern Building, integrated into the rooftop garden arrangement. It's an extension of the PS7 program and will accommodate a range of different uses.

PAVILION BRIEF

Proposed Use

The Eastern Building Rooftop Terrace is an area of respite and of passive and active recreation for the Museum visitor. It is a space that supports curated collection-based programming.

In alignment with the approved design, the pavilion will be used as a flexible space catering to multiple uses including:

- Exhibitions
- Events
- Education
- Workshops

It will contribute to the Powerhouse programs that engage communities with indigenous and agricultural science, climate change and local food production.

Brief Considerations

The Rooftop Terrace is a unique opportunity to deliver and support indigenous perspectives. The Powerhouse will facilitate collaboration with Indigenous and First Nation communities in the design of the terrace including indigenous planting, cultural practice, relationship to the river and connection to the Museum's Indigenous and First Nations Programming.

The Rooftop Terrace will actively promote sustainable design principles maximising environmental opportunities through energy conservation and water usage. The terrace will feature edible or productive plants, include native species, low-water planting and significant shading to mitigate heat.

The terrace should maximise the outlook to the Parrmatta River and respond to the natural environment of the ground plane public domain.

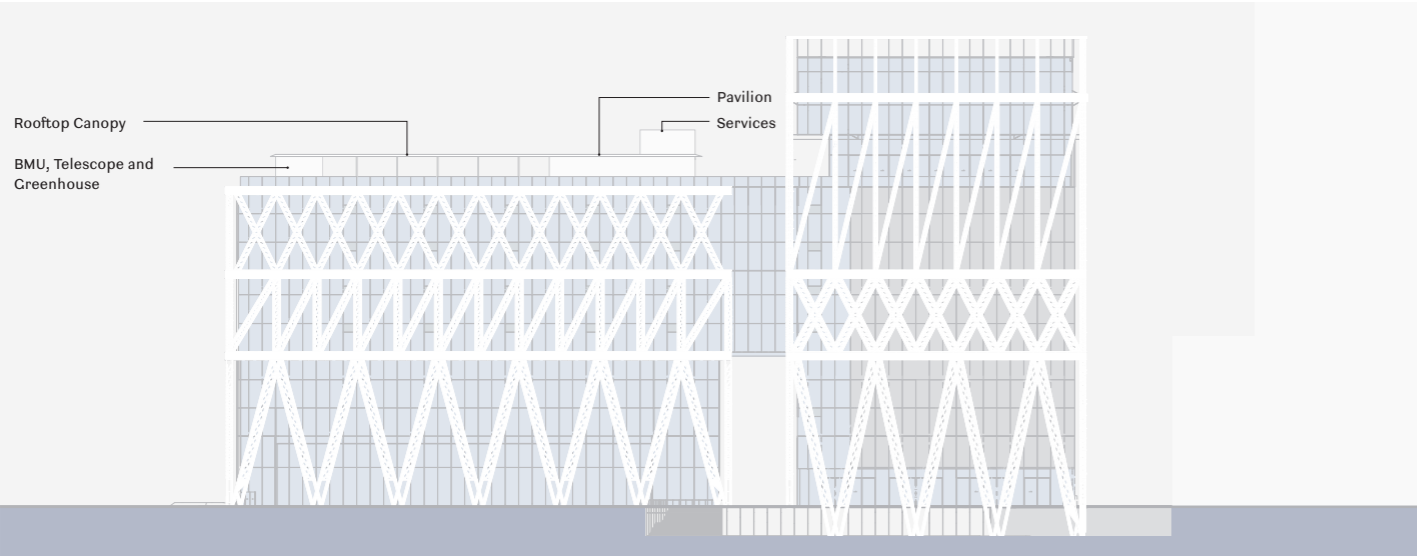
Key Design Requirements

- The Pavilion to have a flexible open-plan without structural obstructions dividing the interior space.
- The façade is to be fully glazed with an operable eastern and north wall - providing natural light and ventilation to the inside and connecting with the rooftop garden area.
- Provision for arrival lobby, amenities, kitchenette, quiet room, glasshouse, telescope room, waste room, BMU storage and plant area.

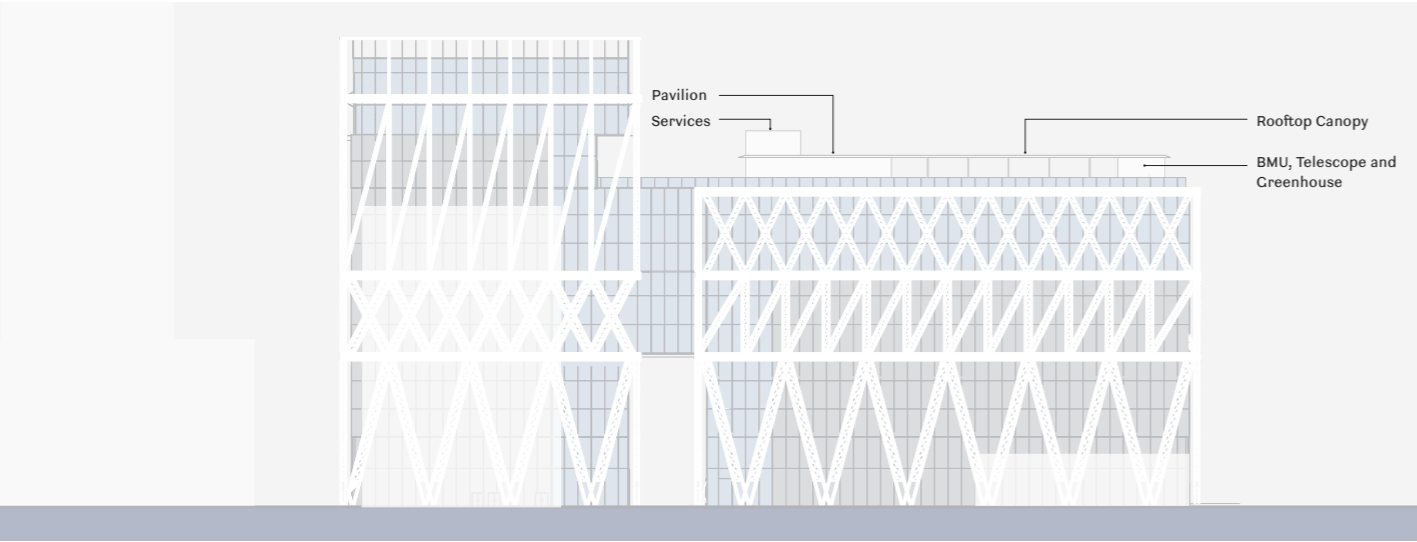
PAVILION DESIGN

The architectural intent aims to create a distinct language for the Pavilion and the rooftop as a whole that coexists but does not compete with the architecture of the overall building. Lightness, transparency and a unified Rooftop experience which seamlessly connects the external landscape terrace and the interior spaces, are at the core of the evolved design.

The Pavilion is the main building volume on the Rooftop and is complemented by a secondary supporting volume on the east edge, which is intended to “disappear” into the landscape. The layout of the Pavilion and the secondary eastern structure has been optimised to enable the rooftop to operate self sufficiently under various use scenarios.



North Elevation



South Elevation



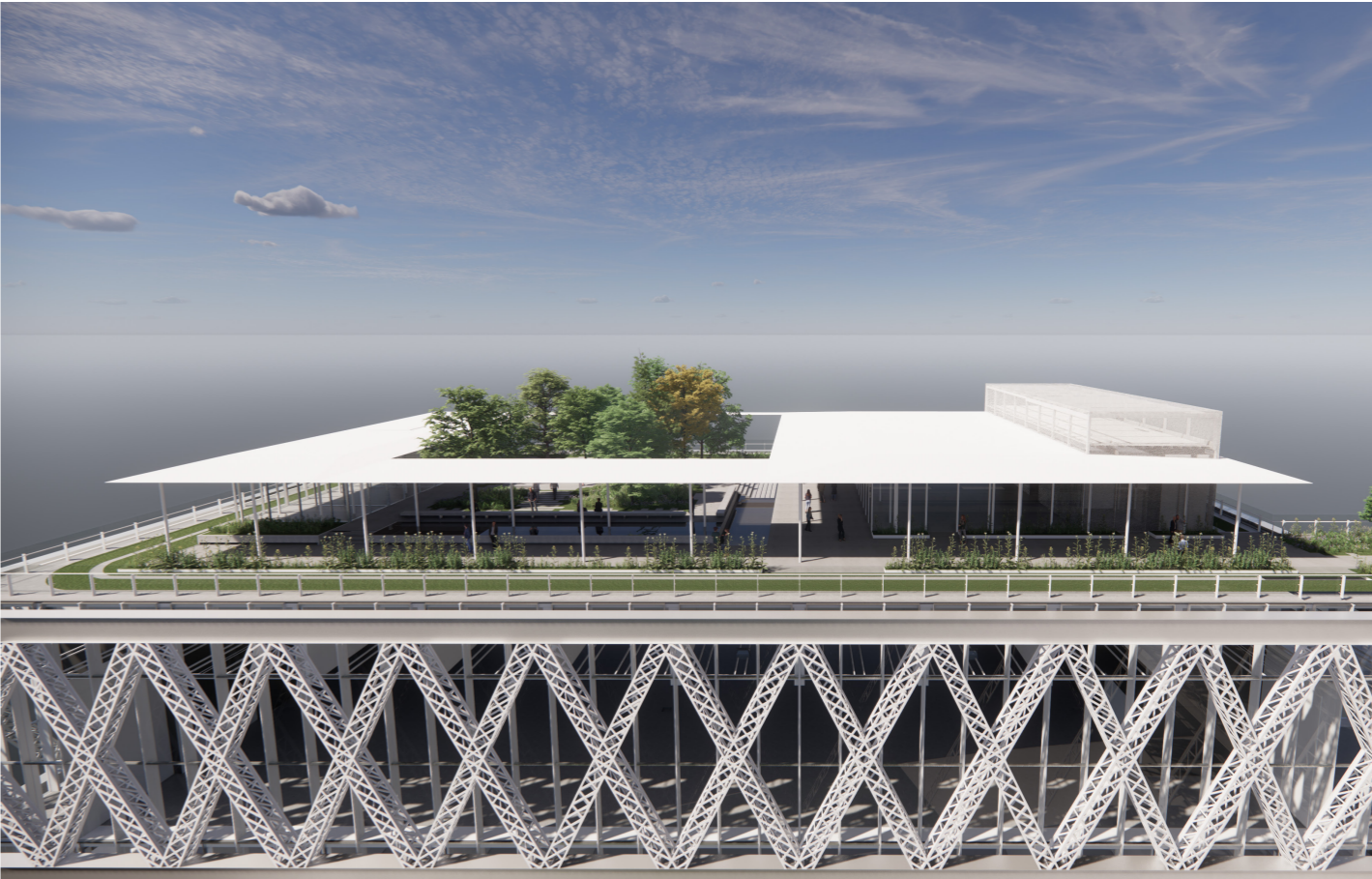
Approved Rooftop Pavilion - Aerial View



Proposed Rooftop Pavilion - Aerial View

The revised design of the Pavilion aims to minimise the visual impact of the back of house and services equipment by reducing its footprint. The structural and services core of the Pavilion is clad in expanded metal mesh, which conceals the equipment from public view and creates a homogeneous envelope. By contrast, the event space of the Pavilion is glazed on three sides and highly transparent, with views onto the rooftop and the surroundings. To further reinforce the continuity between inside and outside, the north and east façades of the Pavilion are entirely operable and stackable, allowing the internal area to extend onto the rooftop landscape, thereby combining them into one seamless event space.

A continuous roof provides improved weather protection and connects the different activity zones of the rooftop. The architectural expression of this canopy is discrete and minimal, almost floating over the East Building of the new Powerhouse. A large opening over the central garden creates a connection to the sky and sun, and provides a moment of vertical release for the planting.



Proposed Rooftop Pavilion - Overall View



Proposed Rooftop Pavilion - View from Bridge Link



Proposed Rooftop Pavilion - View from Rooftop Terrace

PAVILION - MATERIAL BOARD

INTERIOR

- 1. Structural Steel - Intumescent paint. Color: White/Grey, to match exoskeleton
- 2. Floors - Concrete, waterglass finish. Colour: light grey tones, to match main building concrete floors
- 3. Walls - Cementitious render. Colour: White
- 4. Joinery - Brushed stainless steel. Finish: vibration
- 5. Ceilings - Galvanised mild steel expanded mesh, powder coated. Color: White/Grey, to match main building exoskeleton



3



4

EXTERIOR

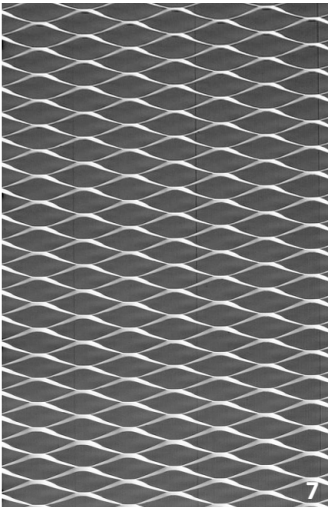
- 6. Glazing - Glazed curtain wall facade: aluminum framing , clear performance glass
- 7. Plantroom bulkhead - Galvanised mild steel expanded mesh, powder coated. Colour: White/Grey, to match the exoskeleton
- 8. Roof - Steel plate, matt. Colour: White



6



7



8





II. ST GEORGES TERRACE

St George's Terrace is located on the south eastern corner of the Powerhouse Parramatta site and comprises a row of seven existing two-storey terrace houses built in 1881. They are recognised as heritage significant at a local level and are the only remaining two storey terrace group in Parramatta.

St George's Terrace is highly modified, having undergone substantial alterations and additions to the front and rear elevations as part of numerous successive conversions of these dwellings for commercial and retail purposes throughout its life.

ST GEORGE'S TERRACE BRIEF

Proposed Use

The terrace will be an integral space for Powerhouse programming and is intended to be used as a flexible pavilion space catering to multiple uses including:

- Supplementary Concierge for Education and Group bookings
- Exhibition and Event Support
- School and Group gathering and orientation
- Education
- Workshop space
- Event mode for ticketing/Front-of-House area
- Community use

Key Design Consideration

- The Terrace's adjacency to bus drop off and Academy provides primary use case for education and group arrival and management.
- Inclusion of amenities to support program and commercial use.
- Removal of all non-heritage fabric.

ST GEORGE’S TERRACE DESIGN

St George’s Terrace occupies the south eastern corner of the Powerhouse Precinct. It is both part of the precinct and part of the city.

The project purposefully retains heritage fabric, while removing contemporary alterations and additions, as a means of integrating the St George’s Terrace into the site and creating a fundamental space for Powerhouse programming. It’s urban and programmatic role is to support the main building without detracting from its significance. It therefore adopts a similar material palette to the main building whilst distinguishing itself through its scale, its heritage proportion and form, and the urban responsiveness of its facade. Each of its four facades directly responds to its unique address, which is in contrast to the monumental homogeneity of the main building’s exoskeleton.

A laneway is defined between St George’s Terrace and the eastern Powerhouse building while it’s western facade addresses the Philip St forecourt, canopy structure and Civic Link. As such, these two facades form the key active addresses for the terrace defined by visual and physical permeability with adaptable fenestration which can be adjusted to suit differing programmatic scenarios.

The southern facade to Philips St reinforces the heritage character of the repetitive terrace typology while incorporating windows which allow light into the internal spaces. Activation for Phillip Street is provided through fixed glazing to allow views into and from the activities within the Terrace.

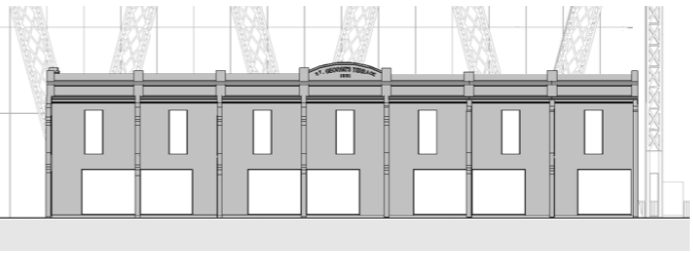
In contrast to the openness of the southern facade, which responds to the primary address of Phillip St, the eastern facade which orients towards Wilde Ave, conceals the service spaces which occupy the eastern end of the terrace and therefore adopts a more closed language.

The spatial organisation of the interior is defined by a large, adaptable, double height room which occupies 6 of the 7 terraces and a service and back of house area which occupies the easternmost terrace and houses kitchen, bathroom and service functions. A newly introduced structural steel frame reinforces the heritage profile of the

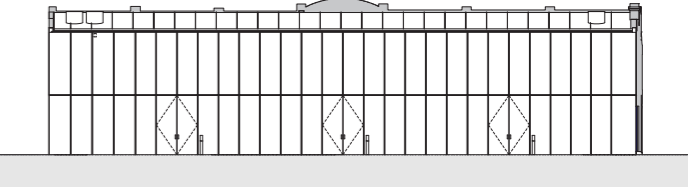
original structure and is positioned at regular intervals to coincide with the original partitions between the terraces. Smaller windows along the southern facade reflect the original heritage fenestration pattern and provide light and opportunity for a controlled connection to the Philip St environment. This is in contrast to the northern facade which is defined by a double storey expanse of full height glazing which maximises the visual connection to the lane and exoskeleton beyond. This unifies the internal experience of being within the terrace and within the Powerhouse precinct.



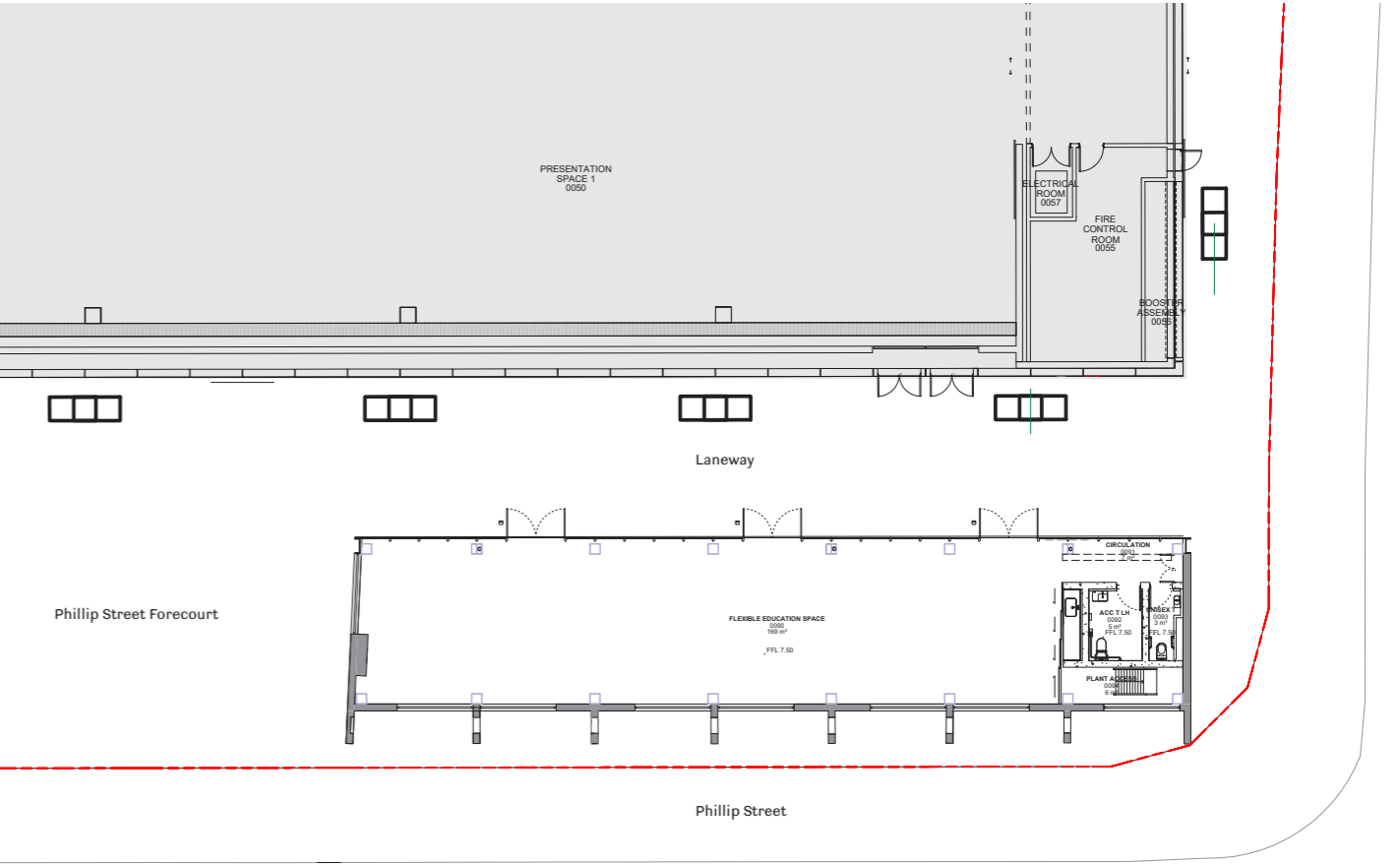
St Georges Terrace and Phillip Street Forecourt



St Georges Terraces Elevation - Phillip Street



St Georges Terraces Elevations - Laneway



St Georges Terrace Proposed Plan

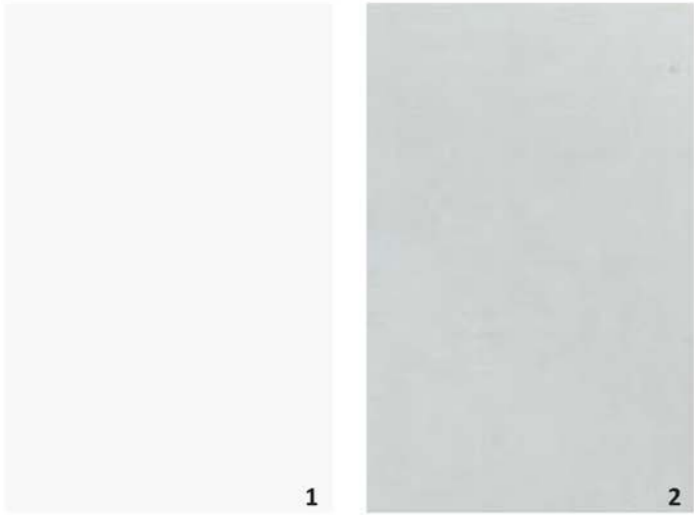
ST GEORGE’S TERRACE - MATERIAL BOARD

INTERIOR

- 1. Structural Steel - Intumescent paint. Color: Dulux AS2700: White/Grey,to match main building exoskeleton
- 2. Floors - Concrete, waterglass finish. Colour: light grey tones, to match main building concrete floors
- 3. Walls - Lime based render. Colour: White
- 4. Joinery - Brushed stainless steel. Finish: vibration
- 5. Ceilings - Galvanised mild steel expanded mesh, powder coated. Color: White/Grey, to match main building exoskeleton

EXTERIOR

- 6. Glazing - Glazed curtain wall facade: aluminum framing , clear performance glass
- 3. Existing walls - Paint. Colour: Pascal heritage Paint, White
- 7. Roof - Zinc panels, matt. Colour: Grey





APPENDIX

Architectural Drawings

Shadow Diagrams

