

**To:** Andrew Simpson  
**From:** Antony Williams  
**Date:** 2 November 2021  
**Subject:** Elevation at Greystanes  
Operational Noise Impact Assessment  
Loading Dock Absorption - Warehouse 2

**At:** Aliro Group  
**At:** SLR Consulting Australia Pty Ltd  
**Ref:** 610.30454-M01-v0.1-20211102.docx

## 1 Introduction

This memo provides additional information regarding the proposed loading dock absorption for Warehouse 2 at Elevation at Greystanes. This acts as an addendum to SLR Report 610.30560 – *Elevation at Greystanes, Operational Noise Impact Assessment, Warehouse 2, SSD 10399*, dated October 2021 (the SSDA Report).

## 2 Absorption Specification

The SSDA Report recommended absorption be used in the loading dock area of Warehouse 2 to reduce noise emissions from the site. The areas where absorption is recommended to be applied are shown in red in **Figure 1** and **Figure 2**.

**Figure 1 Recommended Absorption Areas – Warehouse 2 Awnings**

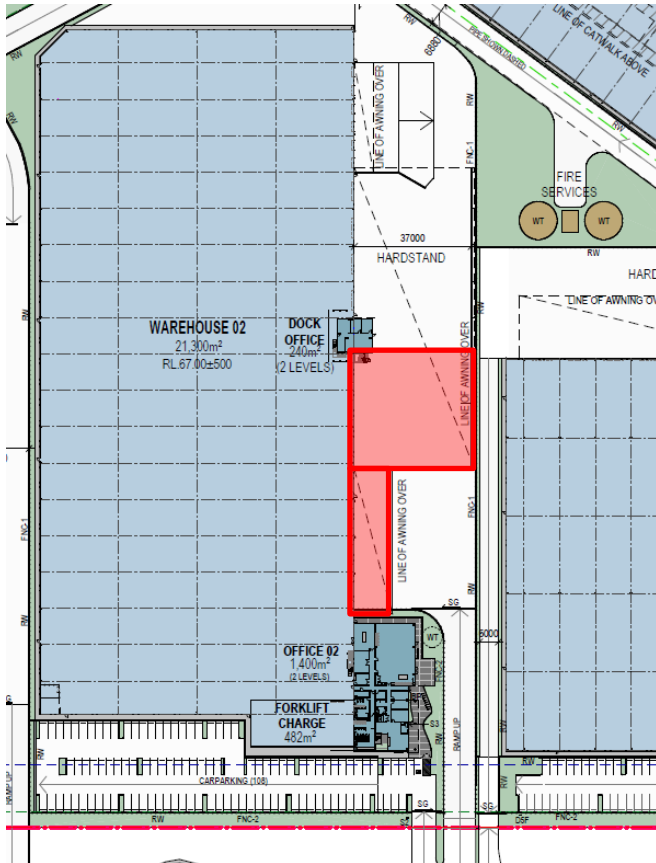
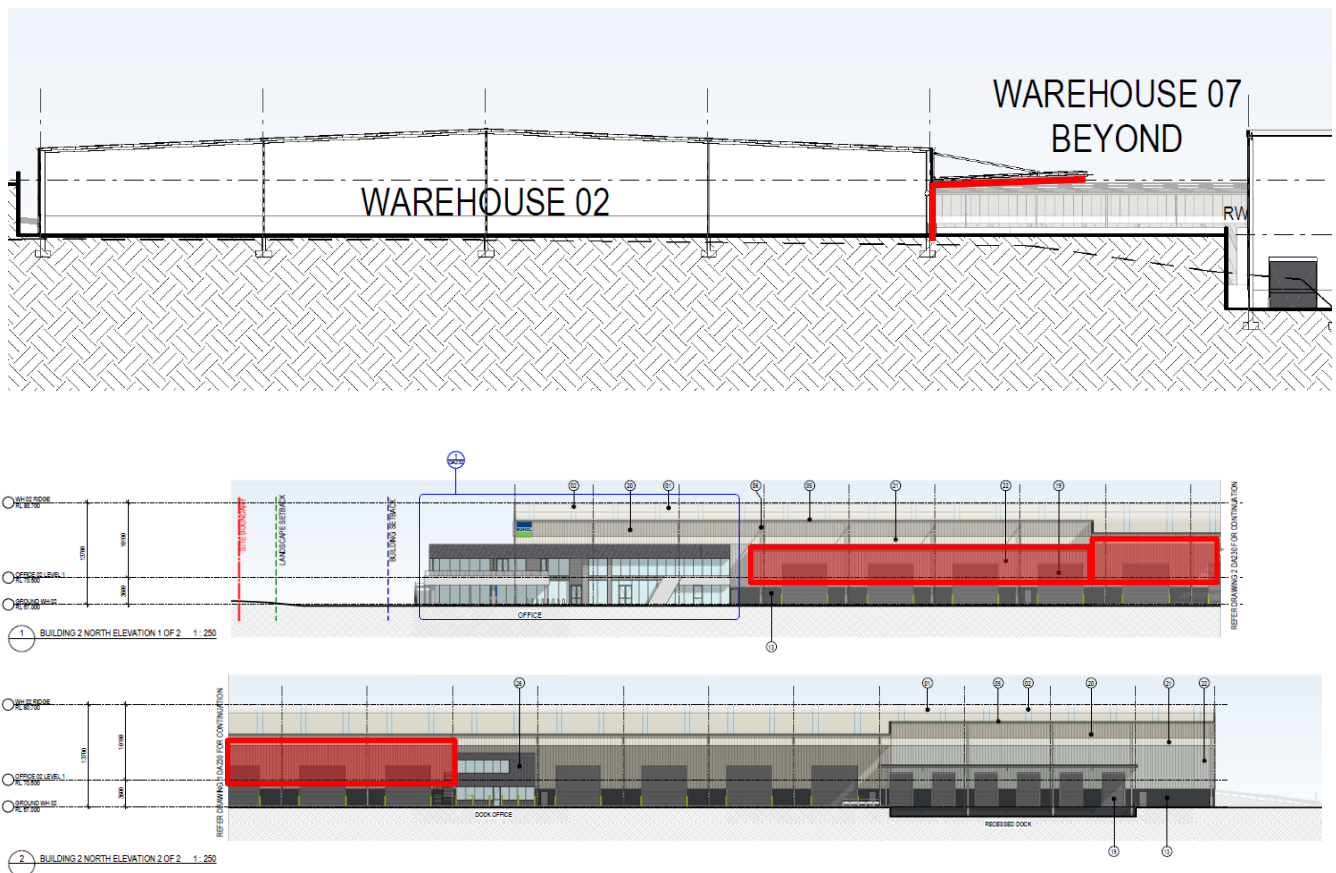


Figure 2 Recommended Absorption Areas – Warehouse 2 Awnings and Facades



This recommended mitigation includes:

- Absorption applied to the eastern facade of the warehouse and underside of the canopy in the areas shown.
- The absorption should have a minimum Noise Reduction Coefficient (NRC) of 0.8. For example, this could be achieved using:
  - 75 mm thick glasswool/rockwool (hydrophobic) insulation 32 kg/m<sup>3</sup> protected by perforated steel cladding (with an open area of 11%)
  - 36 mm of Monoglass spray on insulation.

Checked/  
Authorised by: AMcK