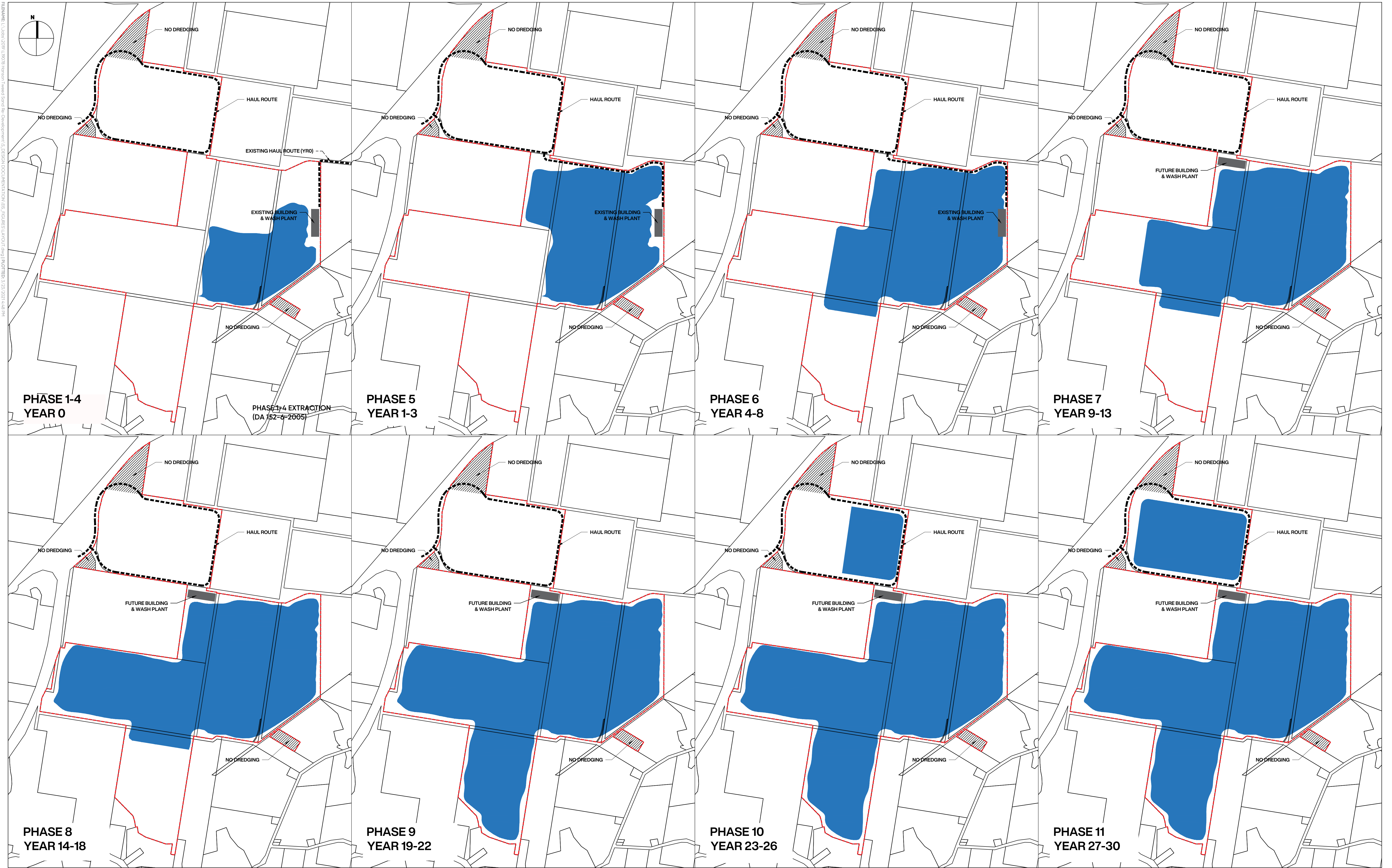


Appendix A13 – Extraction Phasing Plan



FILENAME: L:\Jobs\2019\19078 Hanson Tweed Sand Re-Development\5. DESIGN DOCUMENTATION\ES. FIGURES\Layout\Fig. PLOTTED: 3/23/2021 4:48 PM

PROJECT TITLE

HANSON TWEED SAND PLANT EXPANSION PHASE 5 TO PHASE 11

ENVIRONMENTAL IMPACT STATEMENT

DRAWING TITLE

FIGURE 19: EXTRACTION PHASES

REV	DESCRIPTION	DATE	DRAWN	DESIGN	CHECK	APPROVED
A	PHASING ARRANGEMENT CHANGES - REQ. PLANNER	25/01/2021	ZP	LN	LN	LN

ISSUE:

PRELIMINARY

CLIENT:

HANSON CONSTRUCTION MATERIALS PTY LTD

BASE PROVIDED BY:

SIXMAPS DCDB

MANAGER:

LANCE NEWLEY

COPYRIGHT Zone Planning Group 2018. This document and the information are solely for the use of the authorised recipient and this document may not be used, copied or reproduced in whole or part for any purpose other than that for which it was supplied by Zone Planning Group 2018. Zone Planning Group makes no representation, undertakes no duty and accepts no responsibility to any third party who may use or rely upon this document or the information.

zone

Planning Group

+GILBERT

SUTHERLAND

OSKA

CONSULTING GROUP

Hanson

HYDROLOGICAL ENGINEERING GROUP

ZONE PLANNING GROUP

GOLD COAST
1638 Tweed Street, Burleigh Heads QLD 4220
PO Box 3805, Burleigh Town QLD 4220

GLADSTONE
2/172 Goondoon St, Gladstone, QLD 4680
PO Box 5332, Gladstone QLD 4680
zonelandscape.com.au | 07 55622303

JOB / DRAWING NO:

Z19163- F119

SHEET NO.

SHEET 17 OF 21