

**MONTE SCIENTIA BUILDING
ROOFTOP SPACE
PROPOSED AMENDMENTS**

DESIGN STATEMENT

A number of changes have been made to the design of the rooftop space within the Monte Scientia building in order to increase the usable green space for staff and students to enjoy. This has been achieved by partially relocating the plant room off-site (elsewhere within the school campus) and freeing up space for learning and recreation. This will have a number of positive benefits including the following:

1. Increased green amenity for the school community to enjoy for learning and recreation. All social zones within the rooftop have been screened with planting and shading pergolas to ensure minimal acoustic impact on surrounding neighbours.
2. The size of the Plant Room has been reduced, resulting in more open green space visible from Miller Street and improved visual amenity.

Alongside these key changes to the design of the rooftop which improve usability and visual amenity, there have also been developments in regards to the remaining portion of the mechanical plant design. The Plant Room has been located near the north lift core for efficient services design and will be predominantly concealed behind the facade. The materiality remain the same as previously specified which is a Barestone Cladding. The exhaust vents within the Plant Room project from the top of the lift shaft as an Australia Standard requirement with minimal visual impact.

The project team has extensively researched the best possible design arrangement of the rooftop and associated plant room and believe that the proposal will ensure minimum visual impact from both within the school and Miller Street.

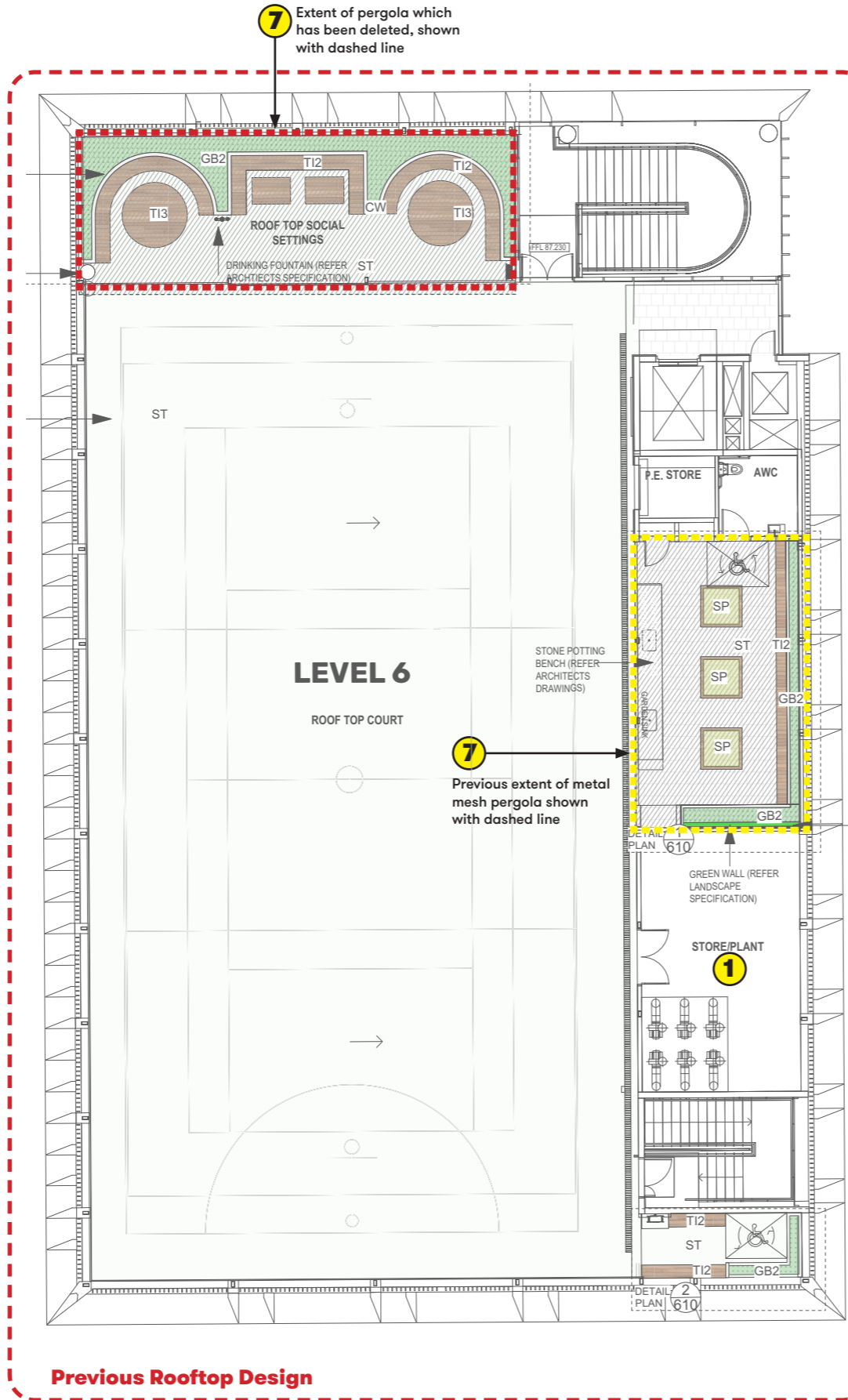
The following pages elaborate further on the key proposed design changes and their impacts on the floor plans and elevations.

MONTE SCIENTIA BUILDING ROOFTOP SPACE - FLOOR PLANS PROPOSED AMENDMENTS

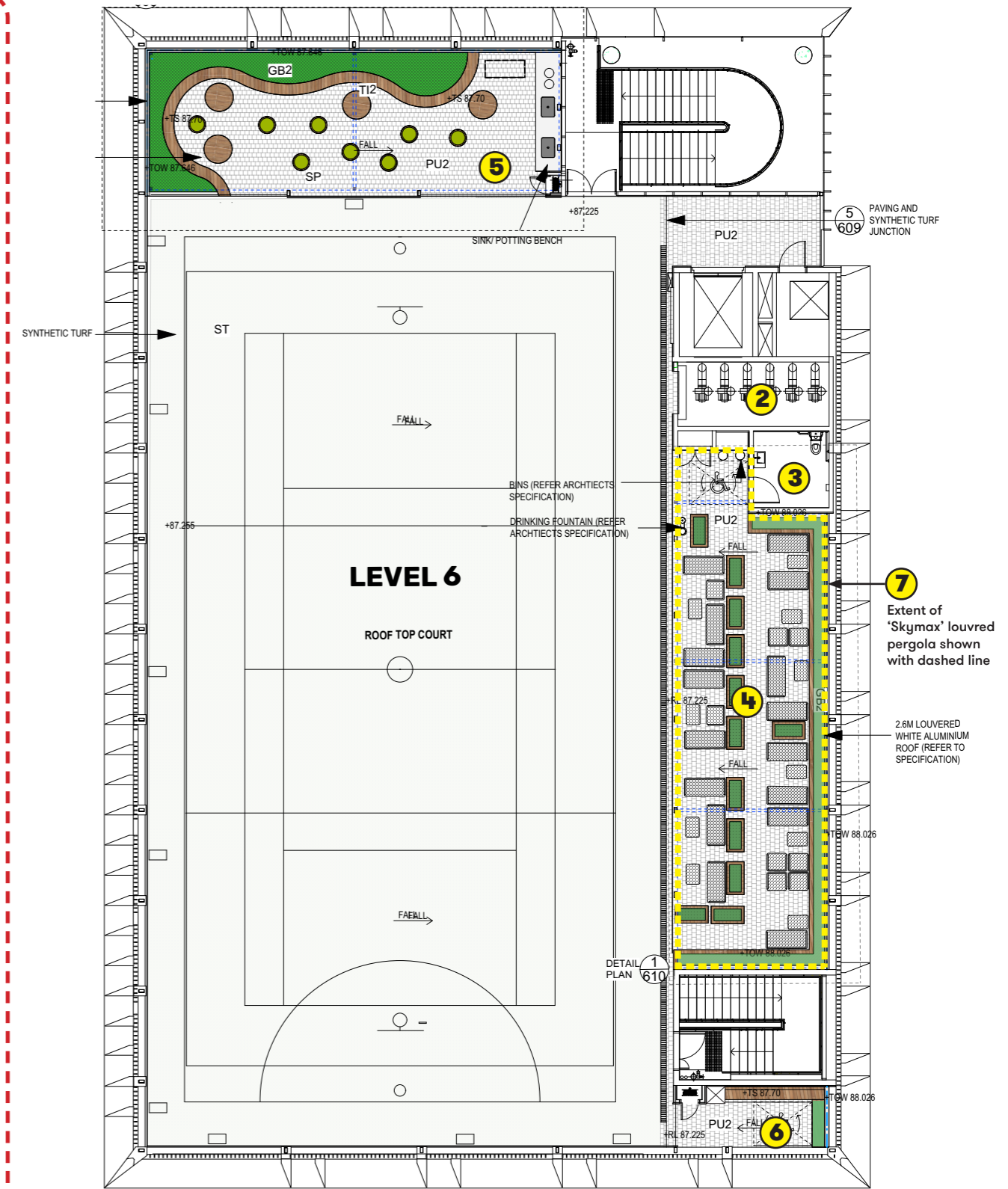
In order to increase the usable green area available for staff and students on the rooftop of the proposed Scientia Building, the design team has reconfigured the proposed Level 6 outdoor space. The following key changes are proposed:

KEY CHANGES

- 1** Plant Room has been reduced in size to allow for more green usable space for staff and students. The plant room area has been partially related elsewhere on the school campus (beyond this project site)
- 2** Remaining Plant Room has been moved to the north to align with the lift core for efficient transfer of services between levels. Refer to the next page which shows the effects of this on the elevation
- 3** The adjacent Accessible WC has been relocated south as a result of the reconfigured Plant Room
- 4** Proposed rooftop lounge area has significantly increased in size, providing more amenity to staff and students and more greenery visible from Miller Street with increased length of planting
- 5** Proposed rooftop Social Space has been reconfigure to allow for more usable space for learning and gardening
- 6** The south-east corner of the rooftop will be enclosed with a roof to enable storage of sports equipment when not in use. The roof will be in line with the facade and not visible from the street
- 7** The specification for the rooftop pergola has been revised from a 'Webnet' metal mesh pergola to a 'Skymax' louvred pergola system. The pergola on the northern portion of the roof has been deleted. The pergola on the eastern portion of the rooftop has been extended over the revised Social Space.



Previous Rooftop Design



Revised Rooftop Design

MONTE SCIENTIA BUILDING ROOFTOP SPACE - ELEVATIONS PROPOSED AMENDMENTS

The proposed changes shown on the previous page, will have minor impact on the building elevations. These impacts are described below:

KEY CHANGES

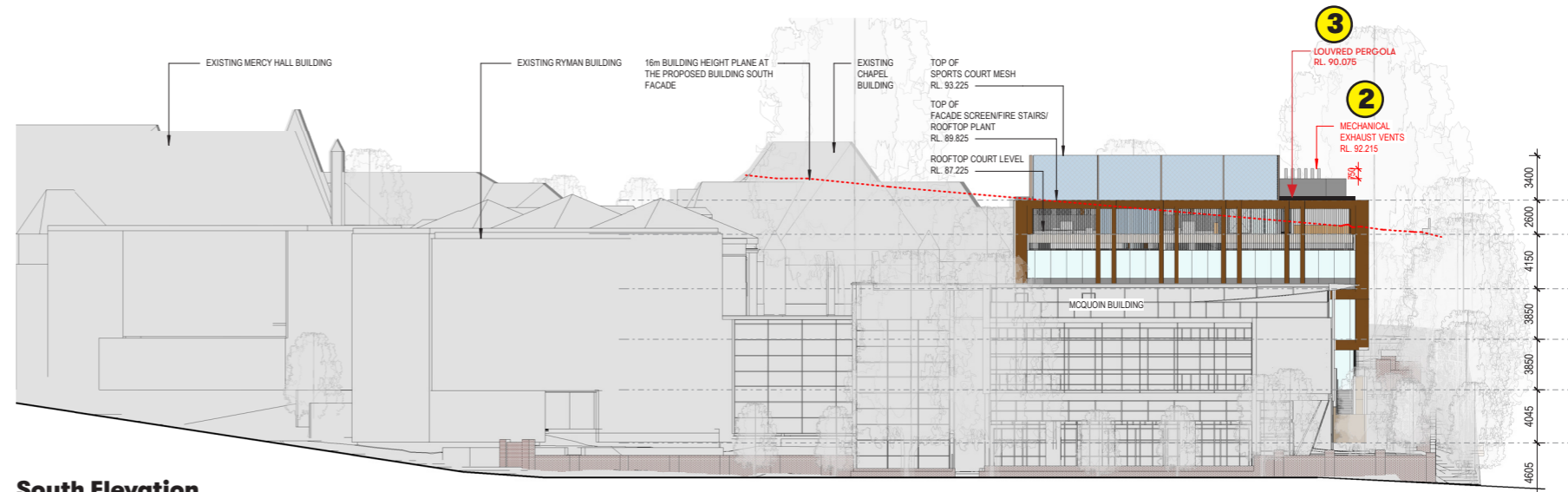
- 1 The size of the Plant Room has been reduced, resulting in more open green space visible from Miller Street.
- 2 The proposed Plant Room is predominantly concealed behind the facade, however a small portion extends in line with the lift core as seen in the elevations. The material of the mechanical Plant Room enclosure is unchanged from the original proposal (Barestone Cladding - refer to example image shown on this page). The exhaust vents within the plant room require to project 750mm from the top of the lift shaft as an Australia Standard requirement. The project team has extensively researched the best possible design arrangement of the rooftop and associated plant room and believe that the proposal will ensure minimum visual impact from both within the school and from Miller Street.
- 3 The specification for the rooftop pergola has been revised from a 'Webnet' metal mesh pergola to a 'Skymax' louvred pergola system (refer to example image shown on this page). The pergola on the eastern portion of the rooftop has been extended over the increased usable green outdoor space.



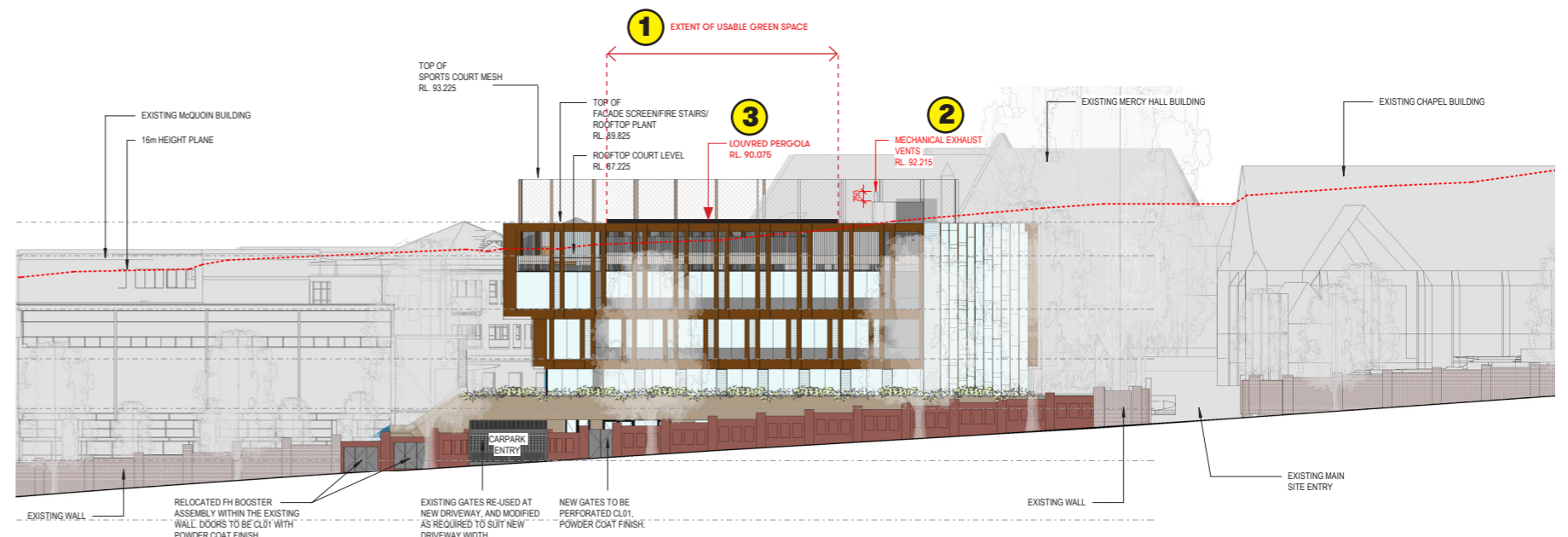
3 Example Image:
Skymax Louvred Pergola



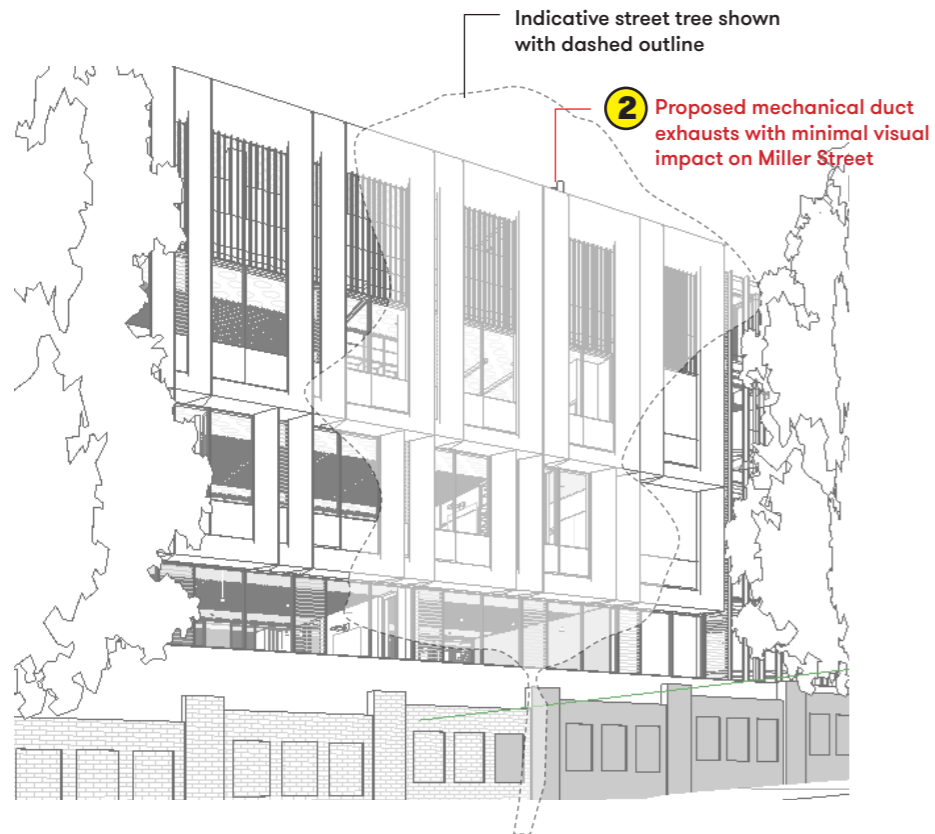
2 Example Image:
Barestone Cladding



South Elevation



East Elevation



View from Miller Street