

## Consultation Outcomes Report

State Significant Development (SSD)  
Development Application (DA)

SSD-10391

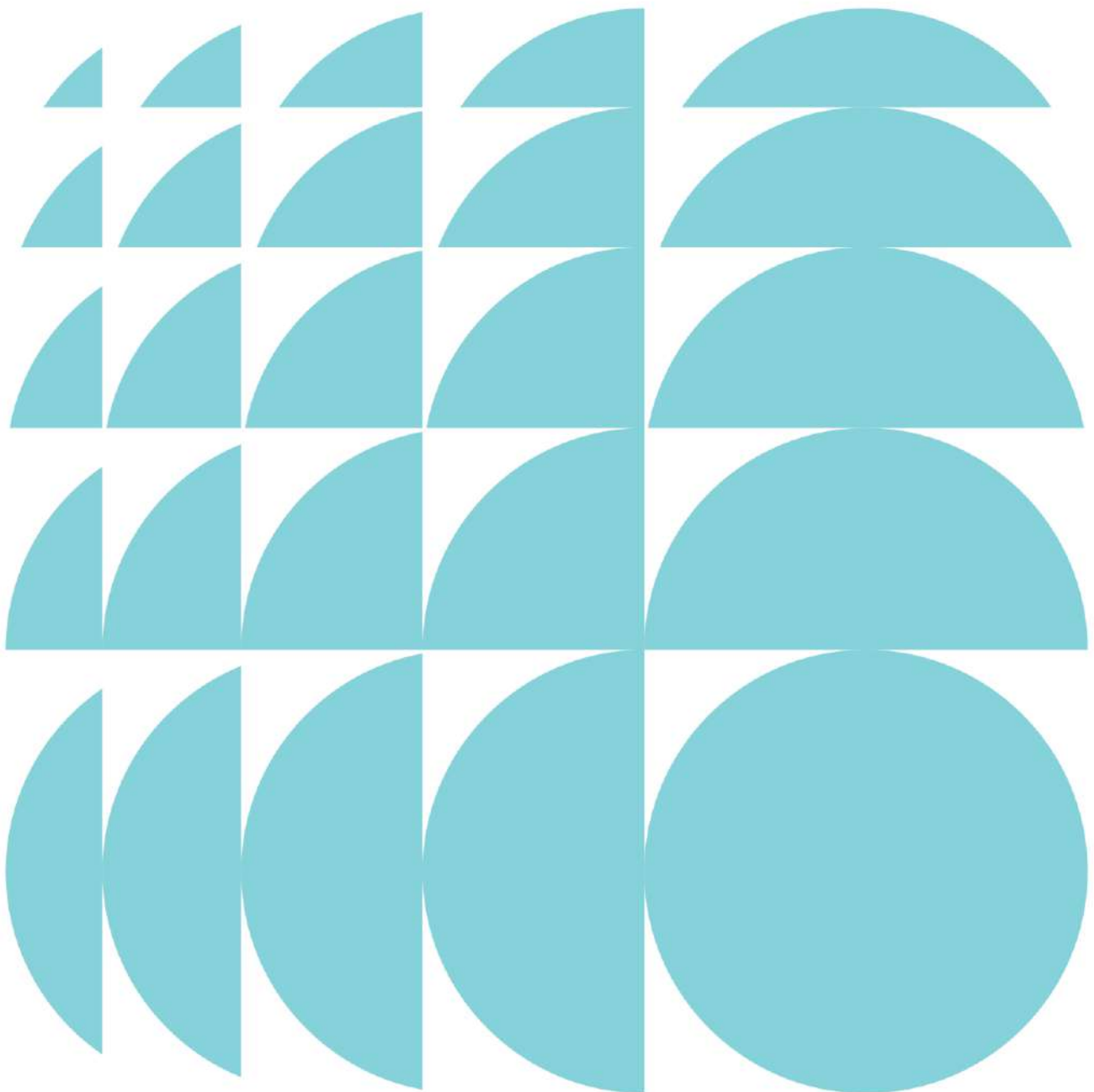
New Liverpool Public School

18 Forbes Street, Liverpool (Liverpool Boys and  
Girls High School)

Submitted to the Department of Planning, Industry  
and Environment

On behalf of NSW Department of Education

1 May 2021 | [2190413](#)



---

#### CONTACT

Ross Hornsey	Director	rhornsey@ethosurban.com	0426 890 186
--------------	----------	-------------------------	--------------

Reproduction of this document or any part thereof is not permitted without prior written permission of Ethos Urban Pty Ltd.

This document has been prepared by:



Ira Brenner

1 May 2021

This document has been reviewed by:



Elizabeth Matkovich

1 May 2021

Reproduction of this document or any part thereof is not permitted without written permission of Ethos Urban Pty Ltd. Ethos Urban operates under a Quality Management System. This report has been prepared and reviewed in accordance with that system. If the report is not signed, it is a preliminary draft.

---

VERSION NO.

DATE OF ISSUE

REVISION BY

APPROVED BY

---

Ethos Urban Pty Ltd  
ABN 13 615 087 931.  
www.ethosurban.com  
173 Sussex Street, Sydney  
NSW 2000 t 61 2 9956 6952

---

1.0	Executive Summary	3
2.0	Introduction	4
2.1	Project Description	4
2.2	Description of Proposed Development	5
3.0	Assessment Requirements	7
4.0	Engagement Approach and Objectives	8
4.1	Engagement objectives	8
5.0	Engagement Process	9
5.1	Project Reference Group	9
5.2	Engagement tools	9
6.0	Engagement activities	11
6.1	Drop-in Community information Session	11
6.2	Agency and stakeholder briefings	12
7.0	Summary of feedback received	13
7.1	Community Feedback	13
7.2	Stakeholder/Agency Feedback	13
8.0	Previous Community Engagement on Masterplan	17
8.1	Community Drop-in Session	17
9.0	Conclusion and Next Steps	17

## Appendices

Appendix A	Project Update
Appendix B	Newspaper Advertisement
Appendix C	Display Boards
Appendix D	Factsheet
Appendix E	GANSW Comments Matrix
Appendix F	Previous Engagement Collateral

## 1.0 Executive Summary

This Consultation Outcomes Report has been prepared by Ethos Urban on behalf of Schools Infrastructure NSW to outline the communication and stakeholder engagement undertaken and present feedback received during the preparation of the State Significant Development Application (SSDA) for the proposed New Liverpool Public School (SSD-10391) at 18 Forbes Street, Liverpool. In undertaking this consultation, full consideration has been given to the NSW Department of Planning and Environment's Secretary's Environmental Assessment Requirements (SEARs).

The proposal seeks to deliver an important contemporary Liverpool Public School to improve access to education in an area with project rapid population growth.

The purpose of the engagement process undertaken to date has focused on building trust with stakeholders and the local community, developing an understanding and support for the project vision, as well as ensuring the community and stakeholders are equipped with the right information about the proposed development as it moves through the planning process.

The approach focused on adopting a proactive, strategic, inclusive, and transparent program and tools to facilitate a meaningful and open dialogue.

As detailed in this report, key consultation activities included:

- Targeted outreach to over 1,211 local residents and businesses to inform them about the project
- Establishment of an 1800 number and community email address to provide the community with a channel to provide comment and ask questions
- Facilitation of a drop-in Community Information Session
- Providing regular project updates via the project webpage
- Targeted outreach to various government agencies.

Community feedback to date has centred around the following elements:

- Impacts to the local traffic network;
- Timing of project delivery; and
- Design outcomes.

Throughout this engagement process, Schools Infrastructure NSW and CBRE have worked closely with all stakeholders to ensure stakeholders and the local community have been provided with an opportunity to participate and provide feedback prior to lodgement of the SSDA.

Schools Infrastructure NSW will continue to engage with all stakeholders and the community during the formal public exhibition period.

## 2.0 Introduction

This report supports an SSDA for the provision of a New Liverpool Public School at 18 Forbes Street, Liverpool. The proposed development seeks to deliver a contemporary primary learning and teaching environment, improve access to education and potentially community uses in the area. The strategic and long term master planning has provisioned for up to 1,200 students.

Liverpool CBD is currently undergoing significant growth and transformation, catalysed by the delivery of nearby Badgerys Creek Aerotropolis and the Liverpool Innovation Precinct. Across Liverpool LGA, and within the Liverpool CBD, strong population growth is being driven by migration, higher-than-average birth rates and the role of Liverpool as a regional city. By 2036, it is projected that primary school enrolment demand in Liverpool School Community Group (SCG) will more than double (an increase of 2,720 students).

Due to the anticipated future student demand within Liverpool CBD, and the need for additional, higher quality learning spaces and facilities, School Infrastructure NSW (SINSW) has identified that there is a need to accommodate additional student population growth within Liverpool.

The existing Liverpool Boys and Girls High School site has been identified as having capacity to house a new primary school, the subject of this application. This location has also been confirmed as the most appropriate location to accommodate a new primary school in terms of responding to the service needs in the Liverpool CBD area.

### 2.1 Project Description

The new Liverpool Primary School (NLPS) is located within the grounds of the existing Liverpool Boys and Girls High School in the Liverpool Central Business District (CBD), at 18 Forbes Street, Liverpool. The proposed new Liverpool Primary School is located in the eastern portion of the existing school grounds (refer to figure 1.)

The site is legally described as Lot 1 in DP 1137425. The application seeks consent for the construction and operation of a new Liverpool Primary School. This will include construction of a new school building for core school facilities, teaching spaces, support units, preschools as well as associated landscaping and open space improvements. A detailed description of development is provided by Ethos Urban within the EIS.



Figure 1. NLPS Site Plan

## 2.2 Description of Proposed Development

The SSD application will seek consent for the construction and operation of a primary school for up to 1,200 students. The size and scope of the new school has been determined to best meet the future needs of the area and will deliver:

- Construction of a three-storey building with school facilities including:
  - Homebases
  - Library
  - Hall
  - Canteen
  - Covered outdoor learning area
  - Core facilities such as administration and staff areas.
- Preschools
- Associated site landscaping and open space improvements;
- School signage.

Some elements of the proposed development (i.e. hall) have been designed to enable shared use of facilities by the community.

The school will be located within the grounds of the existing Liverpool Boys and Liverpool Girls' High Schools. The site of the new school will be on one of two existing sport fields. There may be opportunities for shared use of this open space by both schools and the surrounding community.

### 3.0 Assessment Requirements

Secretary's Environmental Assessment Requirements (SEARs) were issued on 9 January to the application for the preparation of an EIS for the proposed development.

The table below provides a summary of the SEARs and how this report responds to the relevant consultation requirements.

Type	Condition	Comment
Consultation	<p>During the preparation of the EIS, you must consult with the relevant local, State or Commonwealth Government authorities, service providers, community groups and affected landowners.</p> <p>In particular you must consult with:</p> <ul style="list-style-type: none"> <li>• Liverpool City Council</li> <li>• GA NSW</li> <li>• Sydney Trains</li> <li>• Transport for NSW (TfNSW)</li> <li>• Transport for NSW (RMS)</li> </ul> <p>Consultation should commence as soon as practical to agree the scope of investigation.</p> <p>The EIS must describe the consultation process and the issues raised and identify where the design of the development has been amended in response to these issues. Where amendments have not been made to address an issue, a short explanation should be provided.</p>	<ul style="list-style-type: none"> <li>• A summary of the consultation with relevant Local, State and Commonwealth Government authorities and service providers can be found in <b>Section 7.2</b></li> <li>• A summary of the consultation with community groups and affected landowners can be found in <b>Section 7.1</b></li> <li>• A summary of the consultation with Liverpool City Council can be found in <b>Section 7.2.1</b></li> <li>• A summary of the consultation with GA NSW can be found in <b>Section 7.2.2</b></li> <li>• A summary of the consultation with Sydney Trains can be found in <b>Section 7.2.3</b></li> <li>• A summary of the consultation with Sydney Water can be found in <b>Section 7.2.4</b></li> <li>• A summary of the consultation with Transport for NSW (TfNSW) can be found in <b>Section 7.2.5</b></li> <li>• A summary of the consultation with Transport for NSW (RMS) can be found in <b>Section 7.2.5</b></li> </ul>
Further consultation after 2 years	<p>If you do not lodge a development application and EIS for the development within two years of the issue date of these SEARs, you must consult further with the Planning Secretary in relation to the preparation of the EIS.</p>	<ul style="list-style-type: none"> <li>• A development application and EIS has been lodged within two years of the SEARs issue date. All consultation can be found in this Consultation Outcomes Report.</li> </ul>



## 4.0 Engagement Approach and Objectives

### 4.1 Engagement objectives

Schools Infrastructure undertook a proactive and strategic program of community consultation and stakeholder engagement during the preparation of the SSD DA. The following engagement objectives were developed to guide the Communications and Engagement Approach:

- Build awareness, promote benefits and provide information to stakeholder and community representatives about how and when to get involved in the project;
- Facilitate well-considered, robust and genuine engagement across key stakeholders and community representative groups to support the business case and throughout the project lifecycle; and
- Align with and support NSW Government strategic objectives and priorities.

## 5.0 Engagement Process

### 5.1 Project Reference Group

A key factor to the success of the project is the governance provided through the Project Reference Group (PRG), which provides feedback on critical design elements and the overall project direction. PRG meetings commenced in June 2019 and has since met on a monthly basis.

PRG membership comprises of two local school principals (Liverpool Public School and Marsden Road PS), Director of Educational Learning, and project team members.

Details of meeting outcomes are referenced in the Working Group Summary which can be found in the Design Report in that the PRG is responsible for reviewing and governing matters raised in the Working Group.

### 5.2 Engagement tools

Due to the varying levels of stakeholder interest in this project, as well as the different levels of awareness, Schools Infrastructure NSW recognised that a multi-channelled approach to communications was required to ensure consistent and proactive engagement.

The following section outlines a number of key engagement tools and activities established to support this approach.

#### 5.2.1 Letterbox drop

A Project Update was letterbox dropped to 1,211 surrounding residents, businesses and landowners on Wednesday 10<sup>th</sup> March 2021 to inform the local community about the proposal and to invite them to attend a Drop-in Community Information Session. This project update was also directly sent to local Child Care facilities, Liverpool Public School, Marsden Rd Public School and Liverpool Boys and Girls High Schools. A copy of the update can be found in **Appendix A**.

#### 5.2.2 Newspaper Advertisement

Newspaper advertisements was placed in the Liverpool City Champion on Wednesday, 10<sup>th</sup> March 2021. The purpose of the advertisement was to invite interested residents to attend the community information session being held by Schools Infrastructure. A copy of a newspaper advertisement can be found in **Appendix B**.

#### 5.2.3 Project Website

Information was placed on the [project's website](#) inviting interested residents to attend a community information session about the SSD DA and explaining where the project is up to in the planning process. Details of the community information sessions and contact details were included.

#### 5.2.4 Project email and phone number

A project email address and telephone number were set up to provide local residents and stakeholders with an outlet to ask questions and provide feedback both before and after the information session. The contact details were published on all communications collateral, including the project update, website, and factsheet.

The contact details being:

- [schoolinfrastructure@det.nsw.edu.au](mailto:schoolinfrastructure@det.nsw.edu.au)
- 1300 482 651

#### 5.2.5 Invitation for meetings

Emails were sent to several key stakeholders providing them with information about the project, an update on the planning process, offering a briefing session and seeking feedback prior to the application being submitted. Summaries of these meetings can be found in **Section 7.2** of this report.

Stakeholders included:

- Liverpool City Council
- GA NSW
- Sydney Trains
- Transport for NSW and RMS
- NSW Health
- Liverpool Aboriginal Education Consultative Group
- Liverpool Boys and Girls High Schools
- Ingham Institute for Applied Medical Research

## 6.0 Engagement activities

This section of the report summarises the activities held during the preparation of the EIS. These included:

- one community information session; and
- seven meetings held with Council staff and government agencies

### 6.1 Drop-in Community information Session

A Drop-in Community Information Session was held on Wednesday, 17 March from 2pm-6pm at Hart Park, Hart St, Warwick Farm. Members of the project team from Schools Infrastructure and CBRE were available to answer any questions and listen to feedback. Information was displayed on A0 boards and people were able to take a copy of the FAQ factsheet.

Most discussion centred on matters of traffic, delivery timing, open space and enrolment pressures in the community.

A detailed analysis of the feedback can be viewed in **Section 7.1** of this report.

A copy of the display boards can be found at **Appendix C** and the fact sheet can be found in **Appendix D**.



*Community Information Session*

## 6.2 Agency and stakeholder briefings

The table below provides a summary of all stakeholder briefings held, requested by each group following an invitation letter from Schools Infrastructure NSW. Please note all agencies specified in the SEARs were offered a briefing, however only those outlined below chose to meet.

Date	Stakeholder group
16 February 2021	NSW Health
17 February 2021	Transport for NSW
18 February 2021	Liverpool City Council
19 February 2021	Sydney Trains
22 February 2021	Sydney Water
2 March 2021	NSW Health
3 March 2021	Government Architect NSW
5 March 2021	Liverpool Aboriginal Education Consultative Group
11 March 2021	Liverpool Aboriginal Education Consultative Group
16 March 2021	Liverpool Boys and Girls High School
	NSW Health
24 March 2021	Ingham Institute for Applied Medical Research
25 March 2021	Liverpool Aboriginal Education Consultative Group
30 March 2021	Liverpool Aboriginal Education Consultative Group
	NSW Health
13 April 2021	NSW Health
26 April 2021	NSW Health
7 May 2021	Transport for NSW and Liverpool City Council

## 7.0 Summary of feedback received

This section summarises the feedback received from the community and various stakeholders.

### 7.1 Community Feedback

The section below provides a summary of the feedback received at the community information session comprising of local residents, landowners and businesses.

Theme	Comment	Team response
Traffic	Potentially adding 250 additional cars with create stress on the local network	A Traffic Management Plan is being developed as part of the project which will promote the use of other transport modes, as well as provide detailed analysis of any additional traffic.
	Question on how school drop off and pick up will operate	The school may develop operational measures (such as staged drop-off times) to mitigate traffic impact.
Timing	Question of why the project is not being delivered at the same time as the Liverpool Boys and Girls High Schools upgrades	A decision was made to address the strategic response to demand for the primary school community group and the high school community group separately
	Questions on timing of delivery	Mains works construction associated with SSD is scheduled to commence January 2022. School opening is January 2023.
Open Space	Concern regarding a lack of open space for the Boys High School	The new public school will be built on land which is currently surplus to needs. The proposed design solution accommodates the open space needs of the public school and high schools in a compliant manner.
General feedback	Impressed and supportive of the design	Noted.
	Acknowledgement of enrolment pressure on the community	Noted.

### 7.2 Stakeholder/Agency Feedback

This section of the report provides a summary of all stakeholder briefings held during the preparation of the EIS as part of the SSD DA.

#### 7.2.1 Liverpool City Council

A Pre-DA meeting was held with Liverpool City Council on Thursday, 18<sup>th</sup> February 2021. Representatives of the project from the project team included Schools Infrastructure NSW (Project Director), CBRE (Project Managers), Fitzpatrick + Partners (Project Architects), GTA Consultants (Traffic Consultant) and Meinhardt-Bonacci (Civil and Structural Engineers). The meetings included an overview of the current status of the project, the concept design, acoustic assessment, flood levels and traffic and transport assessment. Several questions were asked with key comments/feedback including:

- Questioning the potential acoustic issues caused by the railway line with noise bouncing off walls. The project team responded that this has been considered in the design as the same level of acoustic treatment is needed regardless of the rail line.
- Council noted preference for 10.5m PMF level. The project team confirmed the EIS will be based on Liverpool City Centre PMF and will address the matter raised.
- Council requested traffic volume modelling is conducted for both options of a roundabout and turn bay traffic solution, including consideration of Hospital use of the road.
- A new Green Travel Plan will be provided as part of the SSDA.

- Council enquired about the opportunity for shared community spaces within the design. This will be further investigated in future discussions about the operation of the school, however will not be included as part of this application.

Further, a Transport Working Group was established on 7 May 2021 comprising of membership from the project team, Liverpool City Council and Transport for NSW. This group intends on meeting on a regular working basis to continue discussions around Transport considerations. The first meeting held on 7<sup>th</sup> May 2021 and provided an overview of the project scope, key milestones, proposed transport infrastructure initiatives, proposed active transport initiatives, interface with precinct partners and public transport, and district transport impacts.

### **7.2.2 Government Architect NSW**

A meeting was held with the Government Architect NSW (GANSW) on 3 March 2021 to provide an overview of the project and design detail. GANSW was generally supportive of the masterplan and the development of the project. Given the project has potential to change design outcomes due to the very early contract involvement (VECI) process, GANSW has requested that the project be presented again in the future. A Summary of the feedback is provided below.

#### **Design intent that is supported:**

- The provision of after-hours use of the hall, library and sports field
- The separation of High School and Primary Schools through built form
- Inclusion of space for voids, circulation and building articulation within the block diagrams
- Site permeability, including proposed and future east/west and north/south links
- The location and expression of entry points

GANSW provided the detailed advice and feedback for inclusion in the EIS and/or discussion at the next SDRP. A comprehensive list of comments and design response can be found in **Appendix E**, noting matters raised covered the following areas:

- Landscape/masterplan
- Indigenous consultation
- Architecture
- Sustainability.

### **7.2.3 Sydney Trains**

CBRE, Schools Infrastructure NSW and Ethos Urban met with Sydney Trains on Friday, 19<sup>th</sup> February 2021 to provide an overview of the project, the concept design, construction and operational traffic. Key comments and feedback from Sydney Trains are outlined below which have all been addressed in the EIS:

- Sydney Trains requested easement/Sydney Trains assets be shown in the EIS drawings/survey.
- Sydney Trains noted EMF analysis may be required given the proximity to the Sydney Trains substation.
- Sydney Trains noted the project may need to undertake a rail derailment risk analysis if buildings of over two stories are located within 20m of rail corridor.

### **7.2.4 Sydney Water**

Members of the project team, including Schools Infrastructure NSW, CBRE, Warren Smith Consulting Engineers (Hydraulic project managers), Ethos Urban (Planning) and Meinhardt-Bonnaci (Civil Design Engineer) met with Sydney Water on Monday 22 February 2021. During the meeting, the project team presented the revised concept design, overall project status, flooding and stormwater solutions and response to SEARs comments. Key comments and feedback from Sydney Water are outlined below all of which have been addressed in the EIS:



- Sydney Water confirmed management of the Georges River floodplain is not within the remit of Sydney Water, but Liverpool City Council
- Sydney Water outline the option for the project to lodge a feasibility application to ascertain documentation required for final section 73 application.
- Sydney Water did not have any further issues in relation to the EIS other than what was outlined in the SEARs response
- Sydney Water discussed the importance of engaging with the redevelopment team at Liverpool Hospital and opportunity to coordinate infrastructure upgrades/alterations.

### **7.2.5 Transport for NSW and RMS**

Members of the project team, including Schools Infrastructure NSW, CBRE, Ethos Urban, Fitzpatrick + Partners, GTA Consultations and Meinhardt-Bonnaci met with Transport for NSW (TfNSW) on Wednesday, 17<sup>th</sup> February 2021. During the meeting, the project team presented an overview of the project, revised design, traffic and transport options and discussed TfNSW's SEARs response. Key comments and feedback from Sydney Water are outlined below all of which have been addressed in the EIS:

- TfNSW requested that the following information be including in the Traffic Impact Assessment:
  - Outline of proposed school catchment and associated travel mode; and
  - Traffic modelling to including Boys and Girls High School in baseline
- TfNSW offered to review the updated SIDRA and draft reports in advance of the Test of Adequacy, noting 20 business days are required
- The team agreed that construction traffic impacts will be coordinated with Liverpool WSS team

Further, a Transport Working Group was established on 7 May 2021 comprising of membership from the project team, Liverpool City Council and Transport for NSW. This group intends on meeting on a regular working basis to continue discussions around Transport considerations. The first meeting held on 7<sup>th</sup> May 2021 and provided an overview of the project scope, key milestones, proposed transport infrastructure initiatives, proposed active transport initiatives, interface with precinct partners and public transport, and district transport impacts.

### **7.2.6 Liverpool Girls and Boys High Schools**

On Tuesday, 16<sup>th</sup> March 2021, members of the project team met with the Principals, Deputy Principal and Business Manager for Liverpool Girls and Boys High Schools. Noting there has been extensive existing engagement to date, this meeting presented updated plans, delivery timing and any other project updates to the School representatives. Key feedback and comments are outlined below:

- Note that ongoing consultation will be required for the relocation of the cricket nets
- Note that the project team has been liaising with Health Infrastructure on the adjacent road network and a new roundabout will be installed as part of the project to provide access to the school drop off zone on Burnside Drive

### **7.2.7 Ingham Institute for Applied Medical Research**

On Wednesday, 25<sup>th</sup> March 2021, members of the project team and SINSW Infrastructure Planning team met with Executive representatives from Ingham Institute, who are key stakeholder within the Liverpool Innovation Precinct and located within close proximity of the new school. This meeting presented schematic design plans which would form the basis for SSDA submission and also provided an update on delivery timing and planning for the potential redevelopment of Liverpool Boys and Girls High School. Key feedback and comments are outlined below:

- Importance of safe pedestrian access links to the school from the city centre.
- Coordination with LHAP to ensure overall construction impacts are managed correctly, in order to minimise any abortive works.



### 7.2.8 Liverpool Aboriginal Education Consultative Group

The Project Team and VECI Consultant will continue engagement with Liverpool Aboriginal Education Consultative Group representatives as part of SD finalisation and detailed design development.

For LWPS, an Aboriginal representative from the school community has been engaged as part of the working group process and will continue to be engaged as part of SD finalisation and detailed design development

### 7.2.9 NSW Health (Health Infrastructure)

Schools Infrastructure and NSW Health (Health Infrastructure) established a Coordination group early in 2021 and have held 6 meetings since February 2021. Items discussed are summarised in the table below. This working group is intended to continue ongoing consultation throughout the planning and delivery phases of the project.

Meeting No.	Date	Matters discussed
1	16/02/2021	<ul style="list-style-type: none"> <li>NLPS project status and programme</li> <li>LHAP project status and programme</li> <li>NLPS traffic and access concept options overview</li> </ul>
2	2/03/2021	<ul style="list-style-type: none"> <li>Overview of LHAP staging plans</li> <li>Programme alignment for Northern Link Rd works and NLPS works (HI to confirm)</li> <li>Investigation of stormwater coordination between LHAP and NLPS</li> <li>Development of interim and final precinct plan – focus on pedestrian access, impact on LGHS carpark, Northern Link Rd constraints.</li> <li>NLPS option for roundabout to enable safe turnaround on Burnside Drive</li> </ul>
3	16/03/2021	<ul style="list-style-type: none"> <li>GTA presentation of interim precinct plan</li> <li>Overview of LHAP MSCP – JSP to provide as-builts for incorporation in interim precinct plan</li> <li>SINSW to prepare swept path analysis for roundabout showing existing and proposed for service vehicles</li> </ul>
4	30/03/2021	<ul style="list-style-type: none"> <li>Confirmation of NLPS scope and proposed works to Burnside Drive</li> <li>SINSW to prepare commercial proposal covering:               <ul style="list-style-type: none"> <li>Form of agreement and tenure</li> <li>Planning pathways</li> <li>Funding – Capital and maintenance</li> <li>Programme alignment with LHAP</li> <li>Impact on Liverpool Hospital</li> </ul> </li> </ul>
5	13/04/2021	<ul style="list-style-type: none"> <li>SINSW to prepare technical note for independent review covering:               <ul style="list-style-type: none"> <li>Impact of school on local road network and hospital operation</li> <li>Options development and assessment</li> <li>Summary of SIDRA modelling (and full modelling file)</li> </ul> </li> </ul>
6	26/04/2021	<ul style="list-style-type: none"> <li>Presentation of NLPS Access and Traffic Summary</li> </ul>

## 8.0 Previous Community Engagement on Masterplan

Prior to the engagement undertaken on the detailed Concept Design of new Liverpool Primary School as described in this report above, in 2019 Schools Infrastructure NSW undertook early community engagement to seek feedback on the Masterplan for the project.

### 8.1 Community Drop-in Session

A Community Drop-in Session was held on Monday 18 November 2019 at the Liverpool Girls School from 4:00pm-7:00pm. The Session was advertised via letterbox drop to surrounding residents as well as via the project webpage.

The session was attended by approximately 6 community members who expressed general support for the project, albeit with traffic congestion as the main concern. A copy of all supporting collateral for this event can be viewed in **Appendix F**.

## 9.0 Conclusion and Next Steps

This consultation outcomes report provides a succinct overview of the communications and stakeholder engagement activities carried out during the preparation of the SSD DA.

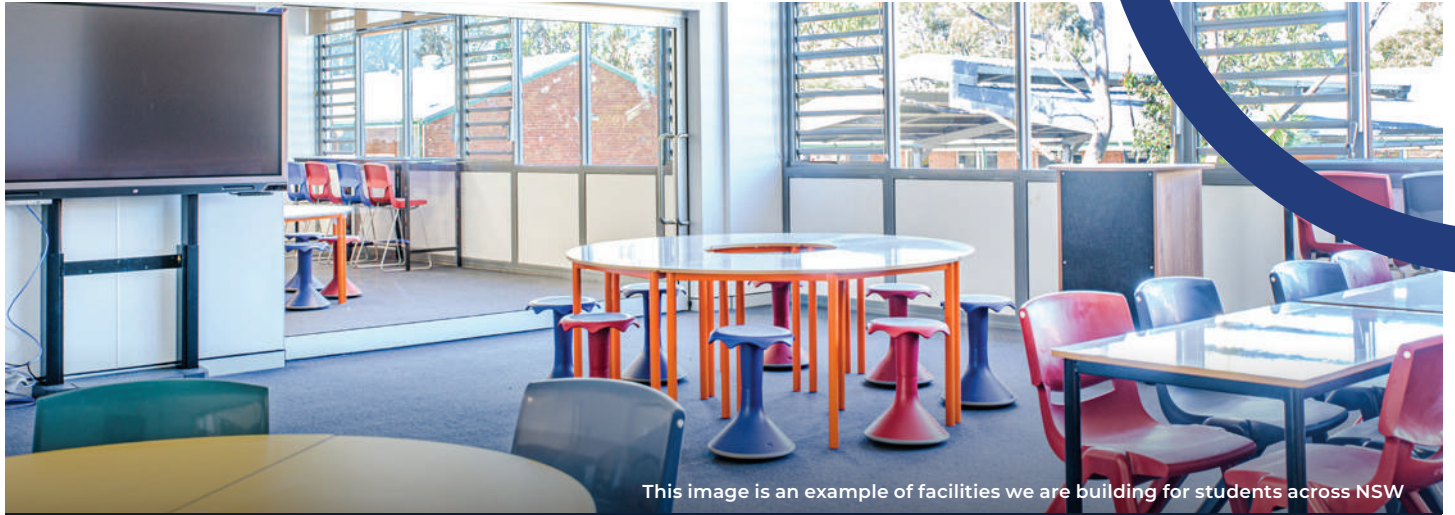
Schools Infrastructure NSW and CBRE have implemented a strategy to inform key stakeholders, local residents, landowners, and businesses about the new Liverpool Public School during both the development of the Masterplan and the Detailed Concept Design. This has not only ensured that the community have a clear understanding of the proposal but it has also provided an important mechanism to gather feedback prior to formal public exhibition.

Understanding the various levels of interest in this project, a multi-channelled approach to communications and engagement was deployed. From letterbox drops, to in person community sessions and meeting, this ensured that stakeholders and the local community were provided with multiple forums and channels in which they could learn more about the project and share their feedback.

Continued engagement will take place with stakeholders and communities during the statutory exhibition of the SSD application, as well as during future stages of the planning and development process. Specifically, School Infrastructure NSW will continue to work closely with the schools' communities and Liverpool City Council to plan and coordinate potential future construction, should consent be granted.

School Infrastructure NSW will continue to update the project webpage and produce updates at key project stages for stakeholders and communities.

## Appendix A. Project Update



This image is an example of facilities we are building for students across NSW

## New public school at Liverpool

### Project update

March 2021

#### Investing in our schools

The NSW Government is investing \$7 billion over four years, continuing its program to deliver more than 200 new and upgraded schools to support communities across NSW. This is the largest investment in public education infrastructure in the history of NSW.

The NSW Department of Education is committed to delivering new and upgraded schools for communities across NSW. The delivery of these important projects is essential to the future learning needs of our students and supports growth in the local economy.

#### Project overview

Planning is underway to build a new primary school for Liverpool on the grounds of the existing Liverpool Boys and Girls High School. The project, when fully completed, will include:

- 44 Classrooms
- 4 Special program units
- 4 Support units
- 2 Preschool activity rooms
- New library, hall and COLA
- New OSHC, administration and amenities.

The new school is due to be complete ready for Term One, 2023.

#### Want to find out more?

We will hold an information session on the new planned school at Hart Park, Warwick Farm.

Date: Wednesday 17 March 2021

Time: 2pm-6pm

Venue: Hart Park, Hart St, Warwick Farm

#### Can I get this document translated?

If you would like this document translated in your language, please email the address below and quote 'Liverpool New'

إذا أردت ترجمة لهذه الوثيقة بلغتك، يرجى إرسال طلبك بالبريد الإلكتروني على العنوان المذكور أدناه مع ذكر اسم الوثيقة: "Liverpool New"

Ако желите да се овај документ преведе на ваш језик, молимо да пошаљете захтев путем мејла на доњу адресу и назначите "Liverpool New"

यदि आप इस दस्तावेज का अनुवाद अपनी भाषा में करवाना चाहते/चाहती हैं, तो कृपया नीचे दिए गए पते पर ई-मेल करके निवेदन करें और "Liverpool New" का हवाला दें।

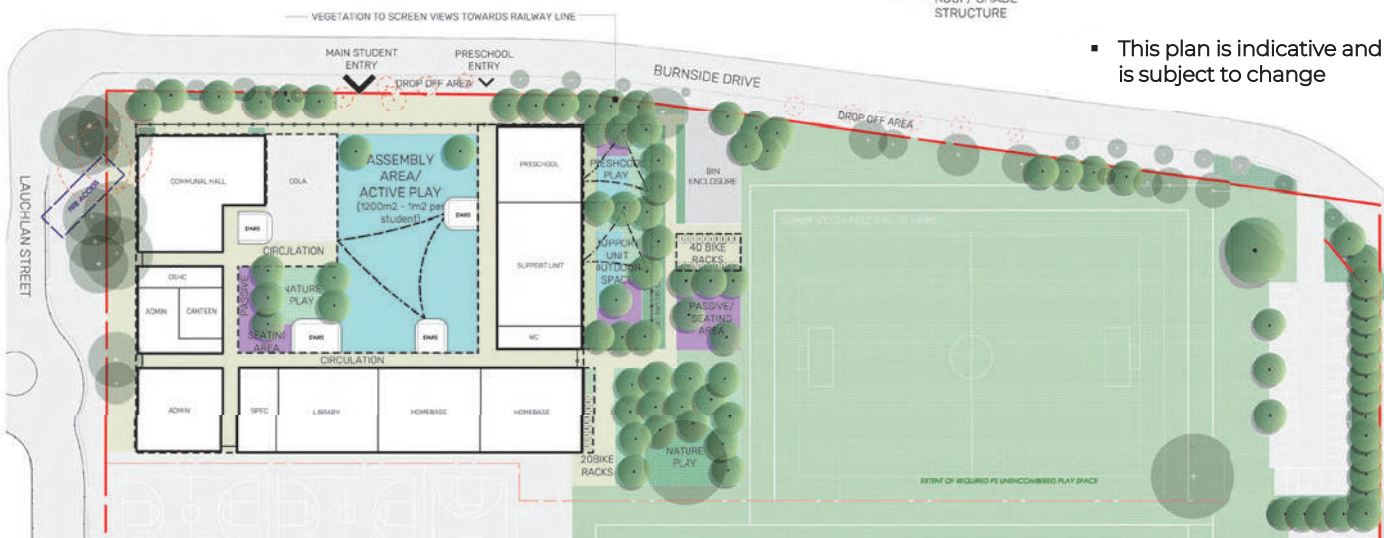
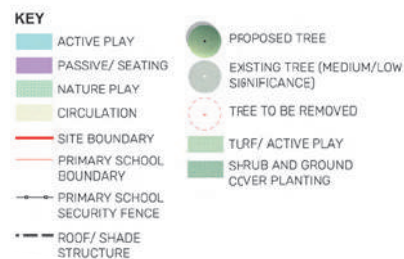
Nếu quý vị muốn có bản dịch tiếng Việt của tài liệu này, vui lòng gửi yêu cầu của quý vị qua email đến địa chỉ dưới đây và nêu chữ "Liverpool New"

#### For more information contact:

School Infrastructure NSW  
Email: [schoolinfrastructure@det.nsw.edu.au](mailto:schoolinfrastructure@det.nsw.edu.au)  
Phone: 1300 482 651  
[www.schoolinfrastructure.nsw.gov.au](http://www.schoolinfrastructure.nsw.gov.au)

## Indicative plan for new school

- 44 classrooms.
- 4 Special program units.
- 4 Support units.
- 2 Preschool activity rooms.
- New library, hall and COLA.
- New OSHC, administration and amenities.



## Frequently asked questions

### When will the work take place?

Early works are expected to start Term 4 this year, with the main works occurring across 2022. The upgrade is expected to be ready for 2023.

### Where is the new school located?

The new school is on the existing site of Liverpool Girls High School and Liverpool Boys High School, on the corner of Lachlan Street and Burnside Drive.

### What is a COLA, a Special Programs Unit and a Support Unit?

A Covered Outdoor Learning Area (COLA) is an assembly area beside the hall. It is used to protect students and staff from the weather during break times and provides an opportunity to take the classroom outdoors.

The Special Programs Unit contains additional learning spaces that cater for specific group activities such as art, music, reading recovery, and clubs.

Support Units are designed to accommodate students with disability and/or additional learning needs.

### What is the catchment area for the new school?

The catchment area will be determined closer to the opening of the school. School catchments, once decided, will be available on the School Finder website [my.education.nsw.gov.au/school-finder](https://my.education.nsw.gov.au/school-finder).

Details on how to enrol will be shared closer to the completion of the project.

### How can I give feedback or ask questions?

For more information or to provide comments, please contact School Infrastructure NSW (details below) or use the QR code.



*At the NSW Department of Education, we recognise the traditional custodians of the lands and waterways where we work and live. We celebrate the First Peoples' unique cultural and spiritual relationship to Country and acknowledge the significance of Aboriginal cultures in Australia.*

### For more information contact:

School Infrastructure NSW  
Email: [schoolinfrastructure@det.nsw.edu.au](mailto:schoolinfrastructure@det.nsw.edu.au)  
Phone: 1300 482 651  
[www.schoolinfrastructure.nsw.gov.au](http://www.schoolinfrastructure.nsw.gov.au)

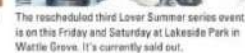
## Appendix B. Newspaper Advertisement



MORE PHOTOS | [liverpoolchampion.com.au](http://liverpoolchampion.com.au)



It may be Autumn, but Liverpool residents are still loving Summer. Council held their second Love Summer picnic-style family friendly event series on Friday and Saturday at Bigge Park.



To find out more, scan the QR code below, go to [endeavourenergy.com.au/aerialpatrols](http://endeavourenergy.com.au/aerialpatrols) or call 133 718.



Bookshop: All prices include GST, p/h.



## Appendix C. Display Boards



# Investing in our schools

## A new Primary School in Liverpool

A project is underway to build a new primary school. This project is scheduled to be ready for Term One, 2023.

### Benefits

**44 classrooms**

**4 Special program units**

**4 Support units**

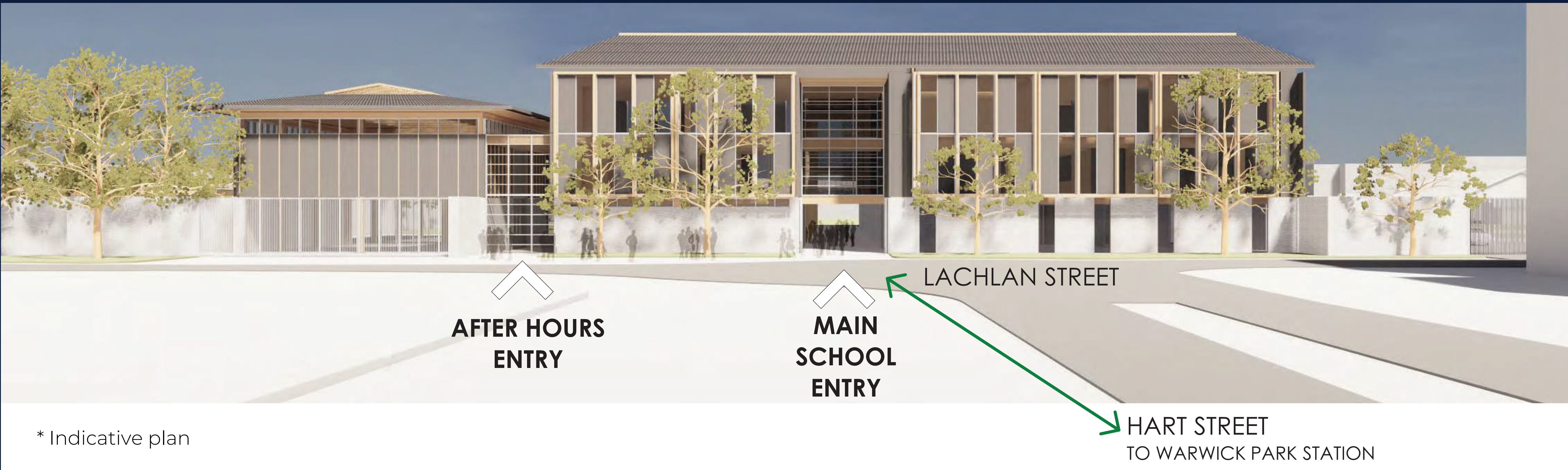
**2 Preschool activity rooms**

**A hall**

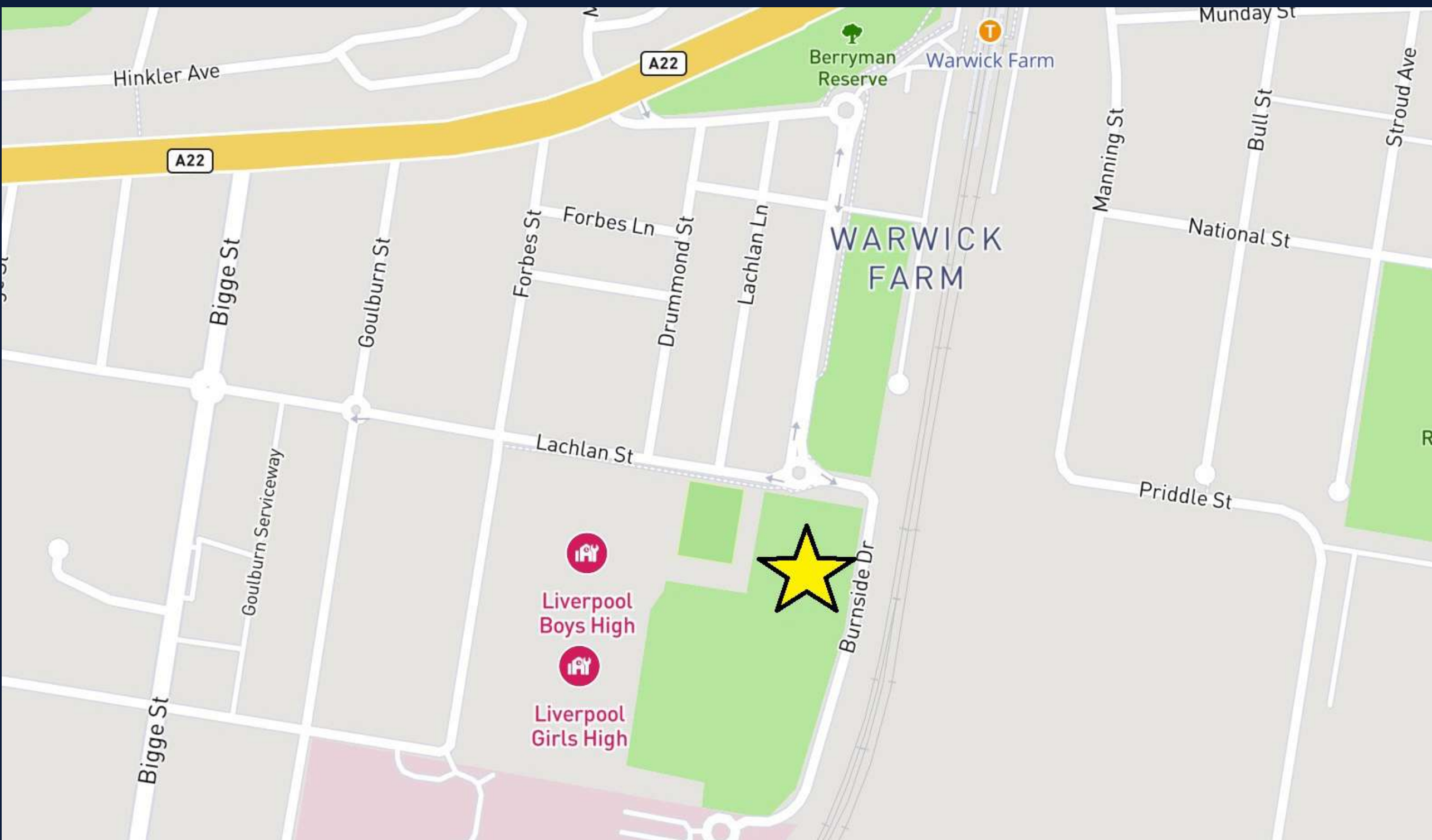
**A library**

**Covered outdoor learning space**

**New OSHC, administration and amenities**



Artist impression of new primary school at Liverpool



New primary school is located on the same site as Liverpool Boys High School and Liverpool Girls High School

Want to know more, share your thoughts, or have questions, please contact School Infrastructure NSW (SINSW) on 1300 482 651, email [schoolinfrastructure@det.nsw.edu.au](mailto:schoolinfrastructure@det.nsw.edu.au) or use the QR code.



## A New Primary School in Liverpool

For more information phone: 1300 482 651  
Email: [schoolinfrastructure@det.nsw.edu.au](mailto:schoolinfrastructure@det.nsw.edu.au)



# Proposed site plan

School Infrastructure NSW (SINSW) is in the final stages of planning for a new primary school in Liverpool, on the site of Liverpool Boys and Girls High Schools.

The school is proposed to accommodate a maximum capacity of 1200 students.

## Next Steps

SINSW will lodge a State Significant Development Application with the Department of Planning. This includes an Environmental Impact Statement.

The school is due to be complete Term One, 2023.

If you want to find out more or provide feedback please visit [www.schoolinfrastructure.nsw.gov.au](http://www.schoolinfrastructure.nsw.gov.au) (and search for New School at Liverpool) or use the QR Code.



## Indicative Site Plan for the new primary school at Liverpool



## A New Primary School in Liverpool

For more information phone: 1300 482 651  
Email: [schoolinfrastructure@det.nsw.edu.au](mailto:schoolinfrastructure@det.nsw.edu.au)



## Appendix D. Factsheet

# New School in Liverpool

## Frequently asked questions

17 March 2021

### What kind of school will it be?

The new primary school will be for students in grades Kindergarten to Year 6 inclusive. It will offer modern facilities to foster innovative teaching methods. Special education support classes are also included.

### Where will the school be located?

The school will be located on the grounds of the Liverpool Boys and Girls High Schools.

### Why was this site chosen for the new school?

It has been identified that a new public school is required in the Liverpool area to meet growing enrolment demand.

There is currently a surplus of open space available on the existing site of the Liverpool Boys and Girls High Schools. Open space provision for students at all three schools can still be met (as per the Educational Facilities Standards & Guidelines) with the build of the new public school.

### How many students will go to this school?

Further planning will determine student enrolment capacity. NSW Government design standards allow schools to be built to a maximum capacity of 1,200 students for public schools.

### When will the school be ready?

The project is forecast to be ready for Term One, 2023, subject to planning approval and weather permitting.

### What is the next step in the project?

School Infrastructure NSW (SINSW) are currently preparing a State Significant Development Application (SSDA) to lodge with the NSW Department of Planning. The SSDA approval is required prior to progressing with main works.

In the meantime, SINSW will review potential early works to prepare the site for the new project.

### What does a State Significant Development (SSD) application include?

The SSD application is submitted to the Department of Planning, Industry and Environment and will consist of an Environmental Impact Statement including:

- A heritage impact statement and assessment
- A transport and accessibility impact assessment
- Assessment of noise and vibration impacts

The Environmental Impact Statement will be on public exhibition, during this time community members can lodge a submission to the NSW Department of Planning.

### What is included in the project?

- 44 Classrooms.
- 4 Special program units.
- 4 Support units.
- 2 Preschool activity rooms.
- New library, hall and COLA.
- New OSHC, administration and amenities.

### What is a COLA, a Special Programs Unit and a Support Unit?

A Covered Outdoor Learning Area (COLA) is an assembly area beside the hall. It is used to protect students and staff from the weather during break times and provides an opportunity to take the classroom outdoors.

The Special Programs Unit contains additional learning spaces that cater for specific group activities such as art, music, and clubs.

Support Units are designed to accommodate students with disability and/or additional learning needs.

## What is the catchment area for the new school?

The catchment area will be determined closer to the opening of the school. School catchments, once decided, will be available on the School Finder website <https://my.education.nsw.gov.au/school-finder>.

Details on how to enrol will be shared closer to the completion of the project.

## Is there an impact to Liverpool Boys High School and Liverpool Girls High School?

The new school will be built on open space within the existing Liverpool Boys and Girls High School site.

During construction, SINSW will work closely with the school leadership at the High Schools to ensure continuity of school operations.

## How is the school being constructed?

The project uses modern methods of construction combining off-site and on-site assembly to deliver infrastructure. This process allows better use of limited land supply and minimises impact to the local community, as new permanent buildings and upgrades are delivered in shorter timeframes.

## What other School Infrastructure projects are happening in the area?

Additional SINSW projects in Liverpool include the planned upgrade at Liverpool Boys High School and Liverpool Girls High School

<https://www.schoolinfrastructure.nsw.gov.au/projects/liverpool-boys-HS-liverpool-girls-HS.html>

And the upgrade at Liverpool West Public School.

<https://www.schoolinfrastructure.nsw.gov.au/projects/liverpool-west-public-school.html>

## Can I get this document translated?

If you would like this document translated in your language, please email SINSW and quote 'Liverpool New FAQ'

إذا أردت ترجمة لهذه الوثيقة بلغتك، يرجى إرسال طلبك بالبريد الإلكتروني على العنوان المذكور أدناه مع ذكر اسم الوثيقة: "Liverpool New FAQ"

Ако желите да се овај документ преведе на ваш језик, молимо да пошаљете захтев путем мејла на доњу адресу и назначите "Liverpool New FAQ"

यदि आप इस दस्तावेज़ का अनुवाद अपनी भाषा में करवाना चाहते/चाहती हैं, तो कृपया नीचे दिए गए पते पर ई-मेल करके निवेदन करें और "Liverpool New FAQ" का हवाला दें।

Nếu quý vị muốn có bản dịch tiếng Việt của tài liệu này, vui lòng gửi yêu cầu của quý vị qua email đến địa chỉ dưới đây và nêu chữ "Liverpool New FAQ"

### Timeline

2020	Early planning and business case approval
Early 2021	Final Planning
Mid 2021	Statutory approval process
Late 2021	Early works
2022	Main works
Term 1, 2023	Project complete

### For more information contact:

School Infrastructure NSW  
Email: [schoolinfrastructure@det.nsw.edu.au](mailto:schoolinfrastructure@det.nsw.edu.au)  
Phone: 1300 482 651  
[www.schoolinfrastructure.nsw.gov.au](http://www.schoolinfrastructure.nsw.gov.au)

## Appendix E. GANSW Comments Matrix

NLPS SDRP2 COMMENTS			
ITEM	SDRP COMMENT	RESPONSIBILITY	DESIGN RESPONSE
<b>The following aspects of the design intent are supported and are crucial to the successful outcome for the project and should be retained as the project is developed:</b>			
General	1 The engagement of Spackman Mossop Michaels Landscape Architects (a detailed landscape presentation should be included at the next SDRP);	SMM (F+P)	F+P: SMM will attend meeting when scheduled and present a detailed landscape plan
	2 The proportion of spaces, architectural expression and the overall planning, especially the location of the hall, and other shared-use facilities to facilitate community access;	F+P	F+P: Noted and addressed in design.
	3 The provision of after-hours use of the hall, library and sports fields will be an asset to the community;	SINSW (Operational response)	The new school design will facilitate the use of core facilities by the community including the hall, library, sports fields and associated amenities. The management and maintenance of these shared facilities is coordinated through arrangements direct with the school.
	4 The separation between High School and Primary School sites through built form;	F+P	F+P: Noted and addressed in design.
	5 Inclusion of space for voids, circulation and building articulation within the block diagrams;	F+P	F+P: Noted and addressed in design.
	6 Site permeability, including proposed and future east/west and north/south links;	F+P	F+P: Noted and addressed in design.
	7 The location and expression of entry points, creating flexible and inviting places for parents to socialise;	F+P	F+P: Noted and addressed in design.
<b>The following commentary provides advice and the matters raised should be discussed at the next SDRP and addressed as part of the EIS:</b>			
Landscaping / Masterplan	1 Provide developed plans to indicate how the central courtyard will be further broken down in scale through the use of buildings, shade structures, landscaping etc;	SMM (F+P)	F+P: Refer to updated Landscape Plan detailed design of courtyard space.
	2 Demonstrate how shading will be provided to the central courtyard noting that students spend on average 30% of their time outside;	SMM (F+P)	F+P: Refer to updated Landscape Report for details extent of outdoor shading and cooling strategy.
	3 Clarify the ground cover materials and pathways to the central courtyard. Provide solar and movement studies showing the viability of grass and consider if there is an optimal location for an area of grass and landscaping and how this will facilitate outdoor leaning. Note on the plan the extent of any Astroturf proposed;	SMM (F+P)	F+P: Refer to updated Landscape Report for details of outdoor ground covering. Note AstroTurf proposed within the courtyard and natural grass proposed to the southern play spaces. Kitchen garden proposed to further facilitate outdoor learning in landscape.
	4 Consider the opportunities that the edges to the courtyard provide gathering spaces / shaded seating areas for students;	SMM (F+P)	F+P: Refer to updated Landscape Plan detailed design of courtyard space.
	5 There are no trees indicated on the western boundary providing shade to the façade and the narrow setback to the boundary does not appear to allow for mature trees. Update the landscape plan to include planting on this boundary and clarify plant selections;	SMM (F+P)	F+P: Western boundary provides 6m setback from existing High School Hardcourts. This space allows for planting (refer to updated Landscape Plan) and required sun shading.
	6 Further information is required illustrating how the kiss and ride on Burnside Drive operates and the strategy for overflow parking;	GTA	GTA: The kiss and ride on Burnside Drive would operate as indented kerbside drop off and pick up areas during the start and finish times of the school. The 'No Parking' restriction (see example signs below) allows vehicles to stop for up to two minutes, which promotes continuous drop off/ pick up activity. Outside of these hours unrestricted parking is allowed. The provided length of kerbside parking has been determined based on the projected maximum student capacity and associated analysis on expected mode share. If in the event that parking capacity is reached, drivers would be required to circulate or park elsewhere in nearby streets. No formal overflow parking area is proposed.
	7 The proposed future east/west green link through the site needs to be indicated and specially acknowledged, potentially through landscaping;	SMM (F+P)	F+P: Refer to updated Landscape Plan for east / west site link.
	8 Illustrate the proposed fencing strategies noting there was an inconsistency with the model at the ground level. Ensure that the fencing strategy as proposed is costed throughout the project through to delivery;	F+P	F+P: Perimeter fencing provided to the majority of the site, with the Western and North Western building line acting as secure line to soften expression to Main Entry and High School.
	9 Provide details and views on the shading structure to the stairs, and the shading to the walkways in general including materials;	F+P	F+P: Mesh screening provided to stairs and upper level walkways for safety and weather protection.
	10 Consider opportunities to allow natural light into the covered links to the main entry and after hours entry to improve the amenity of these areas. Provide studies on the solar access into these areas;	F+P	F+P: Breezeway at Main entry reduced by 3m through the height of the building, emphasising the Main entry and improving solar access. Solar study to be provided. Note: After Hours entry is open above.
Indigenous Consultation	1 Consultation with local elders and other relevant community groups should be undertaken at this early stage of the design proves to ensure meaningful input. We understand the process has begun with Liverpool West and is to be continued here. Further information is to be provided;	F+P/CBRE	F+P: Noted.
	2 Connecting with Country should be considered as a site wide approach that manifests throughout the project in tangible and intangible ways. Consider the opportunity to develop the east/west link as a way to walk and understand Country;	F+P	F+P: Noted.
itecture	1 Provide sun shading to the western façade of the Homebase's, Admin and amenities adjacent to the games fields. Provide a western elevation illustrating this intent;	F+P	F+P: Façade projections provide appropriate sun shading to facades while maintaining views. Elevations and façade details provided in SSDA Report.
	2 Clarify the size of the outdoor learning area balcony projections on levels 2 and 3 and how these relate to the class sizes. Beyond their compliance with standards these spaces also need to be functional and conducive to learning;	F+P	F+P: Upper floors propose 2 x 16.5 m2 outdoor learning areas projecting from the open walkways aligning with EFSG provisions. A space this size could accommodate 16 students at tables or more in an informal arrangement. These areas are in addition to PAA and covered outdoor learning areas within the landscape design.
	3 Indicate the material palette and ensure this selection is not compromised through the procurement process. It is noted the model presented indicated a significant use of timber in the buildings which is supported;	F+P	F+P: Material palette described in SSDA Report - Brick, fibre cement panels and metal sun shades in warm hues. Note the model presented to SDRP indicated a material palette which would complement the native landscape and surrounding buildings. Timber is only proposed in weather protected areas.
	4 Clarify which facilities are provided for after hours use on the plan, including the library, amenities block, and central sports fields. Communicate how and when these spaces will be used;	SINSW/CBRE (operational)	Core facilities are designed and able to be shared. Operationally this is managed by the school.

Arch	5	Demonstrate compliance with fire egress distances understanding that further changes may compromise other aspects of the design;	F+P/BM+G	F+P: Egress review to be undertaken with BCA consultant to ensure compliance.
	6	Consider how the proposed plant to the east of the Homebase's, on the north facing side of the first floor of the school, could be better used as an outdoor learning space or other facility;	F+P	F+P: Size and location of Plant to be reviewed ahead of SD completion.
	7	Ensure the links through the site allow for passive surveillance through active frontages with openings;	F+P	F+P: All breezeways have entries to active spaces to support passive surveillance
Sustainability	1	The watering of the games fields and on site retention of stormwater need to be carefully considered to optimise the use of water on the site;	M-B/F+P	<p>F+P: Minimum 5kL rain water tank provided (note this might increase if capacity can balance with OSR tank TBC)</p> <p>MB: To clarify the requirements regarding irrigation and on-site detention:</p> <ul style="list-style-type: none"> <li>• Rainwater tank (roof water) will be needed for irrigation.</li> <li>• On-Site Detention cannot be used for irrigation.</li> </ul> <p>Rainwater tank will need to be sized (hydraulics) and form part of the On-Site Detention tank.</p>
	2	More information is required on the light and ventilation strategies to all outdoor and indoor spaces;	SV/F+P	<p>F+P: Solar study complete, demonstrating compliance of current design.</p> <p>SV: This is presently being developed and is reflective of the status of the current design. A typical modular arrangement was shown in the presentation which is representative of our general approach. More detail to come in the following weeks.</p>
	3	Indicate the location of the PV cells to the roof;	SV/F+P	<p>SV: Area information has been provided to F+P for their proposed placement.</p> <p>F+P: 500m2 of PV Cells provided on the Western Facing Roof.</p>



## Appendix F. Previous Engagement Collateral



# New primary school for Liverpool

## Project overview

Early planning is underway to build a new primary school for Liverpool on the grounds of the existing Liverpool Boys and Girls High School to cater for projected growth.

The project proposes to deliver new flexible learning spaces, core facilities, and open spaces.

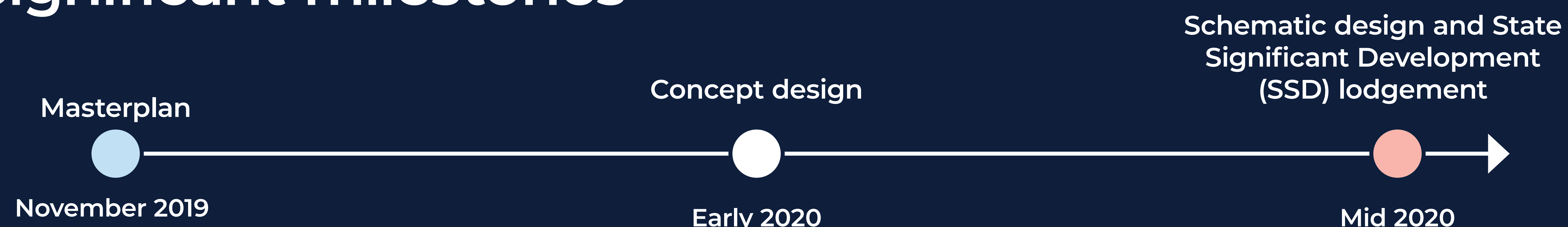
Liverpool has a fast-growing school age population and enrolment demand is fast reaching capacity.

Further planning will inform the size, student capacity, extent of work and any potential staging requirements.



This is an example of innovative learning space we are delivering for students in NSW

## Significant milestones



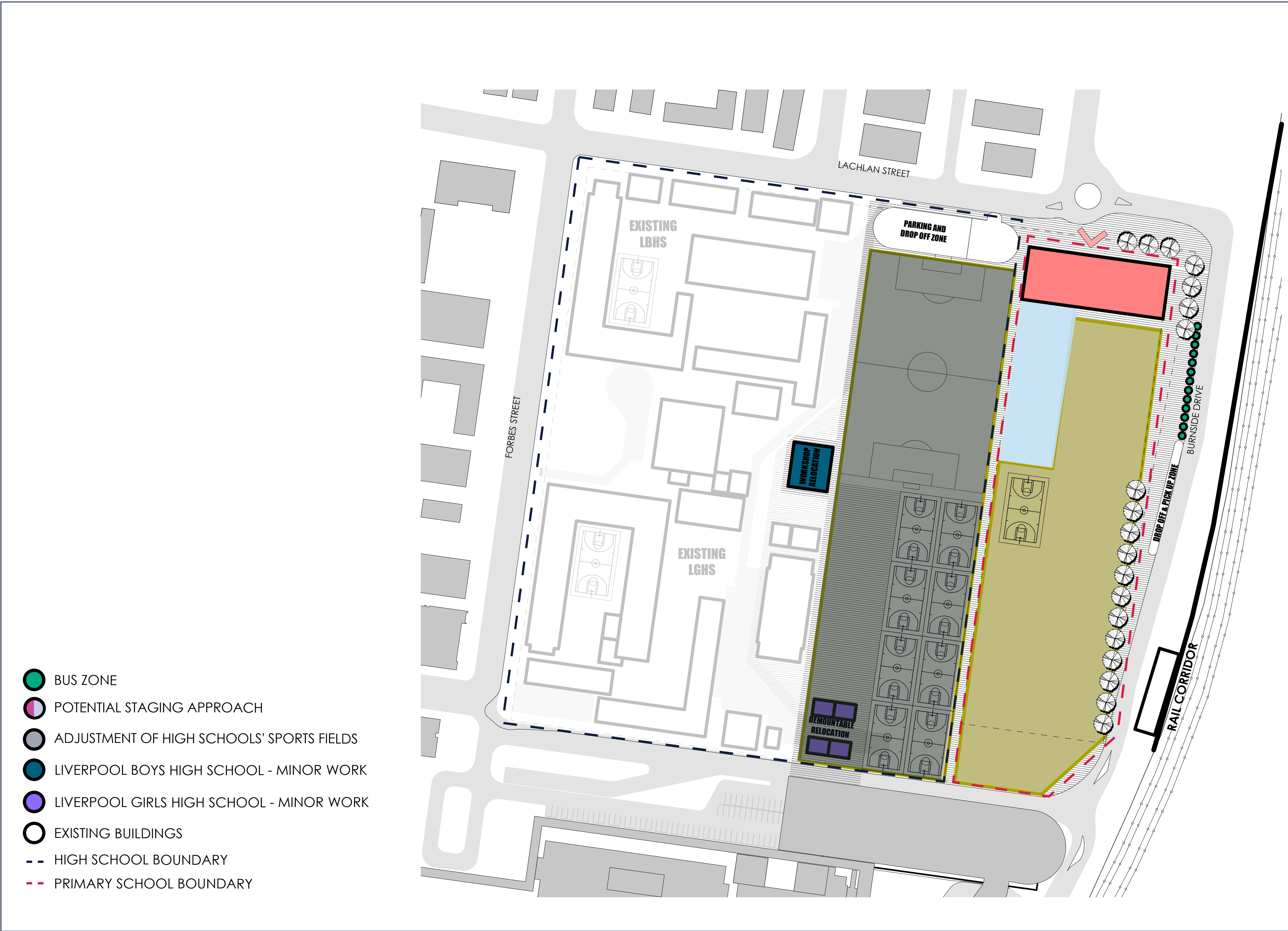
## New primary school for Liverpool

For more information phone: 1300 482 651  
Email: [schoolinfrastructure@det.nsw.edu.au](mailto:schoolinfrastructure@det.nsw.edu.au)



# Indicative site plan

**Note:** The image below shows the potential staging requirements and the assumed minimum and maximum possible size of the school. The final design will be subject to business case and funding approval.



# Current site plan



## New primary school for Liverpool

For more information phone: 1300 482 651  
Email: schoolinfrastructure@det.nsw.edu.au



## Keeping you updated

As part of the planning process, we will be holding information sessions in the area during November and December 2019. You can drop in at any time, provide your feedback and speak to a member of the project team on the following days.

- 1. Monday 18th November – new primary school for Liverpool**  
4:00pm - 7:00pm  
Liverpool Girls High School  
Forbes Street, Liverpool NSW 2170
- 2. Thursday 21st November – Liverpool West Primary School upgrade**  
2:30pm – 3:30pm and 4:30pm – 7:00pm  
Liverpool West Primary School  
79-81 Hoxton Park Road, Liverpool NSW 2170

We will continue to engage with the community as planning progresses. You can also contact the team through the information below.

## For more information

We are committed to working together with our school communities and other stakeholders to deliver the best possible learning facilities for students. We encourage feedback from the community about schools in Liverpool.

We will keep the local school community and residents informed with project update newsletters, information sessions and website updates.

## Stay informed



### Website

Stay up to date by visiting the School Infrastructure NSW website [schoolinfrastructure.nsw.gov.au](https://schoolinfrastructure.nsw.gov.au)



### Email

Contact the Community Engagement team by emailing [schoolinfrastructure@det.nsw.edu.au](mailto:schoolinfrastructure@det.nsw.edu.au)



### Phone

Contact us between 9am–5pm, Monday to Friday on **1300 482 651**

# Liverpool West Public School upgrade New primary school for Liverpool Operational review of Liverpool Boys and Girls High Schools

Information pack for parents, carers, staff, students and residents  
**November 2019**



This is an example of innovative learning space we are delivering for students in NSW

## Investing in our schools

The NSW Government is investing \$6.7 billion over the next four years to deliver 190 new and upgraded schools to support communities across NSW. In addition, a record \$1.3 billion is being spent on school maintenance over five years. This is the largest investment in public education infrastructure in the history of NSW.

This pack contains information about three projects in the Liverpool area:

- New primary school for Liverpool
- Upgrade to Liverpool West Public School
- Operational review of Liverpool Boys and Girls High Schools

# Project overview

Liverpool is transforming as one of Western Sydney's fastest growing districts, with expected fast and rapid growth of housing, jobs and people. A new primary school, and an upgrade to Liverpool West Public School are two projects planned for the Liverpool area in response to student enrolment growth. An operational review is also in progress for the Liverpool Boys and Girls High Schools that considers the future education model for the high schools.

## Liverpool West Public School

Early planning is underway to upgrade Liverpool West Public School to cater for projected growth.

The project proposes to deliver new flexible learning spaces as well as upgrades to core facilities.

Further planning will inform the size, student capacity, extent of work and potential staging requirements.

**Project status** – Early planning is underway. As this project is classified as a State Significant Development, a development application and Environmental Impact Statement will be submitted to the Department of Planning, Industry and Environment for assessment in 2020.

## New primary school for Liverpool

Early planning is underway to build a new primary school located on the grounds of the existing Liverpool Boys and Girls High Schools.

The project proposes to deliver new flexible learning spaces, core facilities, and open spaces.

Further planning will inform the size, student capacity, extent of work and potential staging requirements.

**Project status** – Early planning is underway. As this project is classified as a State Significant Development, a development application and Environmental Impact Statement will be submitted to the Department of Planning, Industry and Environment for assessment in 2020.

## Operational review of Liverpool Boys and Girls High Schools

Liverpool is growing and the future education model and facilities must support the changing community.

The review will hear from parents and carers of future students about what is important as they make decisions about education. Feedback will be considered in the design of the education model including potential co-education structure in the future.

This review will influence decision making including potential redevelopment of the high schools.

**Project status** – This review has just commenced, and consultation will involve an online survey, and information sessions to gather feedback. Further updates will be provided to parents and carers.

# Frequently asked questions

## General

### What does a State Significant Development (SSD) application include?

The SSD application is submitted to the Department of Planning, Industry and Environment and will consist of an Environmental Impact Statement including:

- A heritage impact statement and assessment
- A transport and accessibility impact assessment
- Assessment of noise and vibration impacts

### New primary school for Liverpool

#### What kind of school will it be?

The new primary school will be for students in grades Kindergarten to Year 6 inclusive. It will offer modern facilities to foster innovative teaching methods. Special education support classes are also included. The scope and potential staging of the new school is still to be defined.

#### Where will the school be located?

The school will be located on the grounds of the Liverpool Boys and Girls High Schools. Some reconfiguration of the open space and playing fields will be required to accommodate the new school. As we progress through planning, we will keep you updated about any impacts.

#### When will the school open?

The project is in the early planning phase. The new primary school is forecast to be completed by 2024, subject to planning approvals and potential staging requirements.

#### Do I live in the catchment area?

The school catchment area will be finalised as the project progresses. We recommend you visit <https://education.nsw.gov.au/school-finder> to find your current school catchment.

#### How many students will go to this school?

Further planning will determine student enrolment capacity. NSW Government design standards allow schools to be built to a maximum capacity of 1,200 students for public schools.

#### When can I enrol my child into the new school?

The school will be open for enrolments as the project nears completion. We will keep local residents informed as the project progresses and the department will inform the community when the school begins taking enrolments.

#### What are innovative learning environments?

Innovative learning environments are designed to facilitate learning that strives for the best possible outcomes for students and develops skills critical to thrive in an increasingly complex world. Innovative

learning spaces are flexible and well-resourced so that teachers can design a wide range of learning activities to develop the skills and knowledge of students. Learning is tailored to suit the needs and interests of students allowing them to learn at their own pace and demonstrate their learning in different ways.

### Upgrade of Liverpool West Public School

#### What buildings will be improved during the upgrade?

The project is in the early planning phase. Details on building improvements and other upgrades will be available as the project progresses.

#### What measures will be in place to reduce noise and dust during construction?

Measures will be in place to mitigate noise and dust levels during construction. These measures are still to be confirmed but could include hoarding, hosing down of vehicles as required and deliveries being scheduled outside of pick up and drop off times where possible.

#### Will there be any impacts to existing students?

Student and staff welfare is our number one priority. Appropriate construction and staging strategies will be in place to minimise disruption to students as much as possible. These will be confirmed as the project progresses.

#### When will the upgrade happen?

It is too early to say when construction will start but as planning progresses, we will keep the community updated including around any potential staging of work.

### Operational review of Liverpool Boys and Girls High Schools

#### How can I provide my feedback to the review?

During November and December, we will be seeking feedback from parents and carers of primary school and pre school students in the area. More information will be provided through the local schools.

#### My child is currently at Liverpool Boys / Girls High School, what does it mean for them?

Any changes recommended as part of the operational review will be considered as part of future planning for potential redevelopment of the schools. If any changes or redevelopment were to occur, this would be some years away.

#### What will my feedback be used for?

Feedback would be considered as part of future planning for potential redevelopment of the schools, including any potential co-education structure.



This is an example of innovative learning space we are delivering for students in NSW





## Liverpool West Public School upgrade New primary school in Liverpool

Project update

November 2019

### Investing in our schools

The NSW Government is investing \$6.7 billion over the next four years to deliver 190 new and upgraded schools to support communities across NSW. In addition, a record \$1.3 billion is being spent on school maintenance over five years. This is the largest investment in public education infrastructure in the history of NSW.

### Liverpool West Public School upgrade

Early planning is underway to upgrade Liverpool West public school. The project proposes to deliver new flexible learning spaces as well as upgrades to core facilities.

### New primary school for Liverpool

Early planning is underway on a new primary school for Liverpool. This school is proposed to be located on the grounds of the existing Liverpool Boys and Girls High Schools. The project proposes to deliver new flexible learning spaces, core facilities and open spaces.

### Keeping you updated

We invite you to join us at drop in information sessions where you can speak to the team about the projects and ask any questions.

**Date:** Monday 18 November 2019 – new primary school for Liverpool

**Time:** 4:00pm – 7:00pm

**Venue:** Liverpool Girls High School, Forbes Street, Liverpool

**Date:** Thursday 21 November 2019 - Liverpool West Public School

**Time:** 2:30pm – 3:30pm or 4:30pm – 7:00pm

**Venue:** Liverpool West Public School, 79-81 Hoxton Park Road, Liverpool

### For more information contact:

School Infrastructure NSW  
Email: [schoolinfrastructure@det.nsw.edu.au](mailto:schoolinfrastructure@det.nsw.edu.au)  
Phone: 1300 482 651  
[www.schoolinfrastructure.nsw.gov.au](http://www.schoolinfrastructure.nsw.gov.au)