



01 April 2022

NSW Department of Planning & Infrastructure  
GPO Box 39  
Sydney NSW 2001

Attention: Andy Nixey

Dear Andy,

**Development: Liverpool Health and Academic Precinct (LHAP) – SSDA-10389**  
**Application for Out of Hours Work – Critical Tower Crane Erection**

This letter and supporting documentation is an application in accordance with Part C Condition C5 of the Liverpool Health and Academic Precinct (LHAP) project for approval to operate outside the construction hours approved for the project for requested limited construction activities.

Approved Working Hours

Approved working hours for the LHAP project are defined in condition C4 of the Development Consent.

The approved working hours are 7:00am – 6:00pm Monday to Friday, 8:00am – 1:00pm on Saturdays and no work on Sundays and public holidays. The conditions of consent provide for circumstances where these approved hours may be altered under SSDA-10389 condition C5 pending the below condition being met:

*Works may be undertaken outside these hours where:*

- (d) *for the delivery, set-up and removal of construction cranes, where notice of the crane-related works is provided to the Planning Secretary and affected residents at least seven days prior to the works*

Proposed Alteration

Lendlease seeks approval to work outside the existing approved construction hours for the tower crane erection works.

Please note that the works will be undertaken on and along Goulburn Street, Liverpool NSW 2170, *outside* of the existing site hoardings.

The works proposed to be undertaken outside the current approved working hours will include the following and are illustrated in figure 1 below:

**Day 01 (Saturday):**

- Road closure in accordance with Liverpool Council and Transport NSW approvals.
- 350T Mobile crane mobilisation.
- Tower crane erection and installation process as per the following:
  - Tower Mast section Installation
  - Slew Mount

- Cabin & Powerup
- Rear deck
- 350T Mobile crane will then commence assembling the 75m Jib on the road with the road closure in place.
- Depending on time/progress on the day - mobile crane may assist with assembly of the Jib. Alternatively the mobile crane & 75m Jib will stay on the road overnight
- Traffic control to setup road to allow contra-flow overnight (as required by Council or TfNSW pending ROL Approval)

#### Day 02 (Sunday):

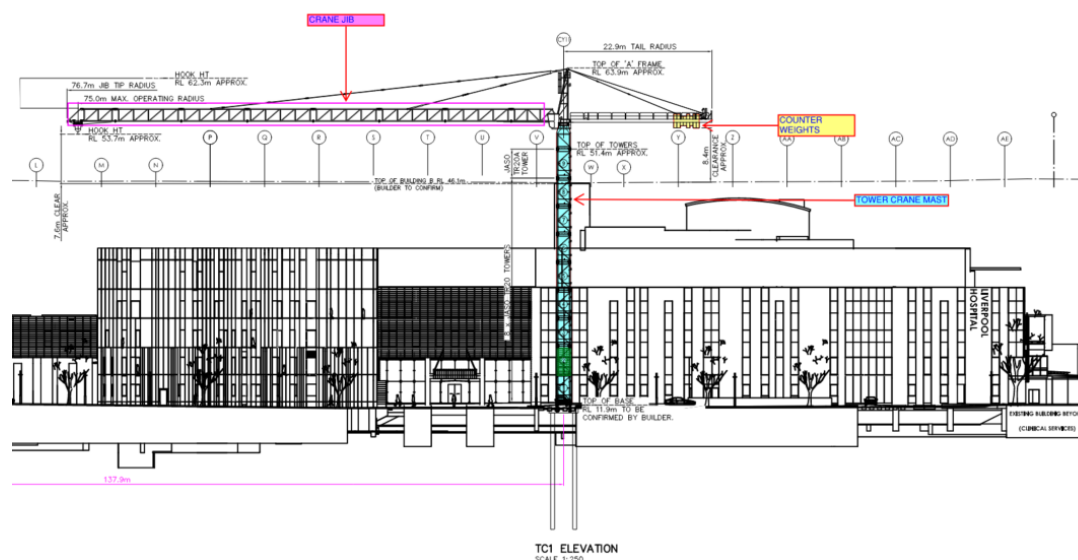
- 350T Mobile crane/rigging crew onsite for prestart
- Jib install to be completed using 350T Mobile
- Installation of Counterweights
- 350T Mobile crane can then start packing up
- Rigging crew will then continue to reeve trolley/hook
- Crane erection process complete and all plant and equipment demobilised from site

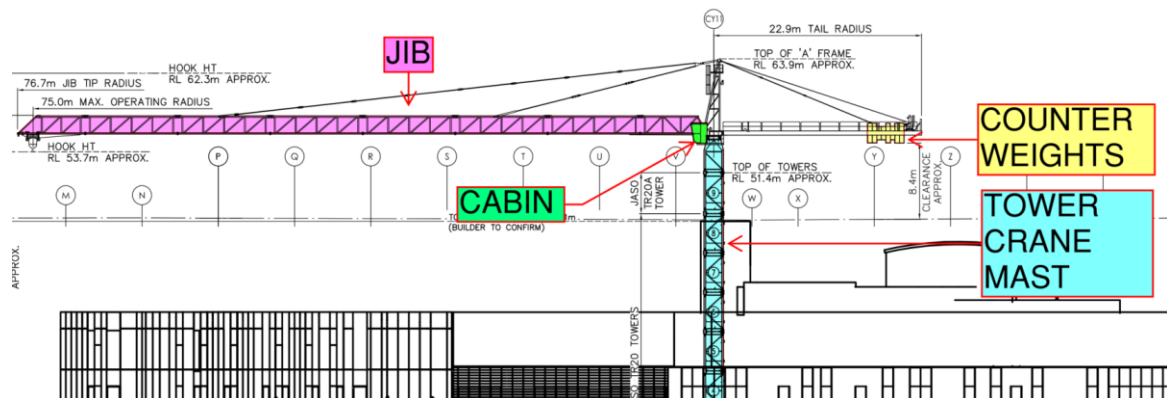
The works are proposed to be undertaken from 5am to 7pm Saturday 14<sup>th</sup> May 2022, and 7am to 7pm Sunday 15<sup>th</sup> May 2022. In the event of inclement weather, the following two weekends are requested as backup weekends for the prescribed works in the event of inclement weather is incurred;

- Saturday the 21<sup>st</sup> May 2022 and Sunday the 22<sup>nd</sup> May 2022 and;
- Saturday the 28<sup>th</sup> May 2022 and Sunday the 29<sup>th</sup> May 2022

The same requested working hours are requested to be adopted for the backup alternate weekends proposed. Once the tower crane works have been completed, site construction works would revert to the normal approved construction hours. A number of preparatory activities are currently being completed during normal construction hours to facilitate the out of hours work.

Works are required to occur out of hours as an added safety measure for scheduled crane erection. This is in line with standard building industry practice for crane erection and dismantle high risk activities. Lend Lease is committed to the safety of its workers and the general public at the LHAP Project.





**Figure 1 – General Crane Arrangement**

A number of factors are relevant for consideration of this request and are intended to be complied with in accordance with SSDA10389 condition C6:

- The local community will be given at least 7 days prior notification of the out of hours works and the methods for contacting the project should they have any concerns will be clearly outlined.

Lend Lease is committed to working with the community to ensuring the best outcome for the development, neighbouring residents and all stakeholders. We are happy to discuss any aspect of the proposal at any time and are happy to provide any support the Department may require to facilitate its timely assessment.

Yours sincerely,



Daniel Puljic  
Construction Manager  
Lendlease Building

Attachments:

1. Liverpool Health and Academic Precinct MW SSDA-10389 Development Consent
2. Site plan showing location of tower crane to be erected on the site
3. Crane Arrangement Plans and Elevations