

MSCP SSDA DRAWING SET

Liverpool Health & Academic Precinct
Elizabeth Street, Liverpool NSW

Revision: **09**
1ST NOVEMBER 2021

Partners

James Fitzpatrick
Paul Reidy
Rod Pindar

Principals

Brian Cunningham
Sergio Melo e Azevedo
Basil Richardson

Senior Associates

Emma Bond
Graham Reynolds
Jze Gan
Kiran Jagdev
Joanna Murchison
Liz Need

Associates

Pei-Lin Cheah
Liz Clarke
Linda Lam
Jessica Rodham
Dina Sunna
Felipe Torres
Quincy Ye

Studio Manager
Melissa Edwards

Nominated Architects in NSW
James Fitzpatrick 9303
Rod Pindar 9019

A Level 6, 9 Castlereagh Street
Sydney NSW 2000

P +61 2 8274 8200

E enquiries@fitzpatrickpartners.com

W fitzpatrickpartners.com

ABN 19 081 636 900



MSCP DRAWING LIST - SSSA

*	COVER
A-SSDA-MSCP-01	DRAWING LIST
A-SSDA-MSCP-02	LOCATION PLAN.
A-SSDA-MSCP-03	EXISTING SITE PLAN.
A-SSDA-MSCP-04	DEMOLITION PLAN.
A-SSDA-MSCP-05	SITE PLAN.
A-SSDA-MSCP-06	GA GROUND 01 (ROAD LAYOUT).
* A-SSDA-MSCP-07	GA GROUND 02 (ROAD LAYOUT)
* A-SSDA-MSCP-08	GA LEVEL 01
* A-SSDA-MSCP-09	GA LEVEL 02
* A-SSDA-MSCP-10	GA LEVEL 03.
* A-SSDA-MSCP-11	GA LEVEL 04.
* A-SSDA-MSCP-12	GA LEVEL 05.
* A-SSDA-MSCP-13	GA LEVEL 06
* A-SSDA-MSCP-14	SECTIONS
* A-SSDA-MSCP-15	ELEVATIONS
* A-SSDA-MSCP-16	ELEVATIONS
* A-SSDA-MSCP-17	FACADE DETAILS
* A-SSDA-MSCP-18	FACADE DETAILS
* A-SSDA-MSCP-19	SCHEDULE OF FINISHES
* A-SSDA-MSCP-20	SCHEDULE OF FINISHES
* A-SSDA-MSCP-21	SCHEDULE OF FINISHES
* A-SSDA-MSCP-22	3D VIEW
A-SSDA-MSCP-23	3D VIEW.
* A-SSDA-MSCP-24	SHADOW DIAGRAMS WINTER SOLSTICE 21ST JUNE
A-SSDA-MSCP-25	VISUAL IMPACT ASSESSMENT.
A-SSDA-MSCP-26	VISUAL IMPACT ASSESSMENT.
* A-SSDA-MSCP-27	GA LEVEL 07
* A-SSDA-MSCP-28	GA LEVEL 08 ROOF PLAN (NEW DRAWING)

LIST OF PROPOSED MODIFICATIONS

+ A NEW 2.2M HIGH PERFORATED STEEL SAFETY SCREEN ALONG THE LENGTH OF THE SPIRAL ENTRY AND EXIT RAMP
REASON: TO PROVIDE ADDITIONAL SAFETY AND A HIGHER LEVEL OF FALL PROTECTION

+ A NEW SOLAR PV ARRAY AND ASSOCIATED SUPPORT STRUCTURE ON THE ROOF LEVEL, RESULTING IN THE LOSS OF ONE CAR SPACE (REVISED TOTAL IS 1244 SPACES)
REASON: ADDITIONAL INFRASTRUCTURE TO PROVIDE A HIGHER LEVEL OF SUSTAINABLE DESIGN AND A LONG TERM, SUSTAINABLE ENERGY SOURCE FOR THE HOSPITAL CAMPUS

+ SIX ADDITIONAL ACCESSIBLE SPACES ON THE ROOF LEVEL, RESULTING IN A LOSS OF THREE CAR SPACES (REVISED TOTAL IS 1244 SPACES)
REASON: ADDITIONAL PARKING AMENITY FOR PEOPLE WITH SPECIAL NEEDS

+ INCREASED ROOF TOP PARAPET SAFETY SCREEN HEIGHT (500MM INCREASE TO RL34.850)
REASON: TO PROVIDE ADDITIONAL SAFETY AND A HIGHER LEVEL OF FALL PROTECTION

+ INCORPORATION OF A NEW ARTWORK IN PLACE OF THE PREVIOUS FAÇADE DESIGN
REASON: INCORPORATION OF AN ARTWORK IN ACCORDANCE WITH PREVIOUS CONSULTATION UNDERTAKEN AND SSD CLAUSE D26 RELATING TO PUBLIC ART.

+ GROUND FLOOR BICYCLE PARKING RELOCATED TO GRID C4/CD
REASON: BETTER PLANNING OUTCOME

+ GROUND FLOOR MAIN SWITCH ROOM RELOCATED TO GRID C5/CD
REASON: BETTER PLANNING OUTCOME

+ FIRE STAIR (WEST) RELOCATED TO GRID C1/CC ON ALL LEVELS (PREVIOUSLY ADJACENT TO LIFT CORE)
REASON: BETTER PLANNING OUTCOME

+ FIRE STAIR (EAST) AT GRID C10/CC RECONFIGURED ON ALL LEVELS
REASON: BETTER PLANNING OUTCOME AND ACCESS TO FIRE STAIR

+ LEVEL 2 ENTRY DRIVEWAY RECONFIGURED TO ALLOW FOR TWO VEHICLE ENTRY LANES AND TWO VEHICLE EXIT LANES
REASON: DEVELOPMENTS IN THE DESIGN IN CONJUNCTION WITH TRAFFIC ENGINEER.

* DRAWINGS AMENDED ARE HIGHLIGHTED AND INCLUDED IN THIS SET

fitzpatrick+partners

© Copyright 2021
p. +61 (0)2 8274 8200 w. www.fitzpatrickpartners.com
a. LEVEL 6, 9 CASTLEREAGH ST, SYDNEY 2000, AUSTRALIA

THIS DRAWING IS ISSUED UPON THE CONDITION IT IS NOT COPIED, REPRODUCED, RETAINED OR DISCLOSED TO ANY UNAUTHORISED PERSON EITHER WHOLLY OR IN PART WITHOUT PRIOR CONSENT IN WRITING OF fitzpatrick+partners.
DO NOT SCALE DRAWINGS. CHECK DIMENSIONS BEFORE COMMENCING WORK.
DRAWINGS SHOW DESIGN INTENT ONLY. SHOP DRAWINGS ARE TO BE PROVIDED FOR APPROVAL PRIOR TO CONSTRUCTION OR MANUFACTURE. INCONSISTENCIES ARE TO BE REPORTED TO fitzpatrick + partners.

AMENDMENTS

REV.	DATE	DESCRIPTION
06	24/04/20	FOR REVIEW
07	07/05/20	NOT USED
08	11/08/20	SSDA AMENDMENT
09	01/11/21	SSDA AMENDMENT

CHK
RP
RP
RP
RP

PROJECT
LIVERPOOL HEALTH & ACADEMIC PRECINCT
ELIZABETH STREET LIVERPOOL NSW
CLIENT
HEALTH INFRASTRUCTURE
14/77 PACIFIC HWY, NORTH SYDNEY NSW 2060

PROJECT NORTH SCALE
25mm ON ORIGINAL

DRAWING
DRAWING LIST
PRINT DATE
23/11/2021

PROJECT NO. 21807	DRAWING NO. A-SSDA-MSCP-01	ISSUE 08
STATUS SSDA AMENDMENT		

CAR PARK NUMBERS	
ON GRADE	66 (17 SC / 11 ACC / 0 MB)
GROUND LEVEL	94 (20 SC / 12 ACC / 0 MB)
LEVEL 1A+1B	144 (29 SC / 0 ACC / 0 MB)
LEVEL 2A+2B	152 (24 SC / 0 ACC / 14 MB)
LEVEL 3A+3B	159 (24 SC / 0 ACC / 14 MB)
LEVEL 4A+4B	158 (24 SC / 0 ACC / 14 MB)
LEVEL 5A+5B	159 (24 SC / 0 ACC / 14 MB)
LEVEL 6A+6B	157 (24 SC / 0 ACC / 14 MB)
LEVEL 7A+7B	152 (14 SC / 6 ACC / 20 MB)
TOTAL	1244 (205 SC / 29 ACC / 90 MB)

Refer to A-SSDA-MSCP-06 GA GROUND 01



- EXTENT OF NEW SCREEN TO RAMP
- ROAD WORKS
- LANDSCAPE WORKS
- SITE BOUNDARY

- FIRE STAIR (WEST) RELOCATED TO GRID C1/CC ON ALL LEVELS (PREVIOUSLY ADJACENT TO LIFT CORE)
- FIRE STAIR (EAST) GRID C10/CC ON ALL LEVELS RECONFIGURED ON ALL LEVELS
- GROUND FLOOR BICYCLE PARKING RELOCATED TO GRID C5/CC
- GROUND FLOOR MAIN SWITCH ROOM RELOCATED TO GRID C5/CD
- NEW SCREEN TO RAMP

fitzpatrick+partners

© Copyright 2021
p. +61 (0)2 8274 8200 w. www.fitzpatrickpartners.com
a. LEVEL 6, 9 CASTLEREAGH ST, SYDNEY 2000, AUSTRALIA

THIS DRAWING IS ISSUED UPON THE CONDITION IT IS NOT COPIED, REPRODUCED, RETAINED OR DISCLOSED TO ANY UNAUTHORISED PERSON EITHER WHOLLY OR IN PART WITHOUT PRIOR CONSENT IN WRITING OF fitzpatrick+partners.
DO NOT SCALE DRAWINGS. CHECK DIMENSIONS BEFORE COMMENCING WORK.
DRAWINGS SHOW DESIGN INTENT ONLY. SHOP DRAWINGS ARE TO BE PROVIDED FOR APPROVAL PRIOR TO CONSTRUCTION OR MANUFACTURE. INCONSISTENCIES ARE TO BE REPORTED TO fitzpatrick + partners.

REV.	DATE	DESCRIPTION
06	24/04/20	FOR REVIEW
07	07/05/20	NOT USED
08	11/08/20	SSDA AMENDMENT
09	01/11/21	SSDA AMENDMENT

PROJECT
LIVERPOOL HEALTH & ACADEMIC PRECINCT
ELIZABETH STREET LIVERPOOL NSW
CLIENT
HEALTH INFRASTRUCTURE
14/77 PACIFIC HWY, NORTH SYDNEY NSW 2060

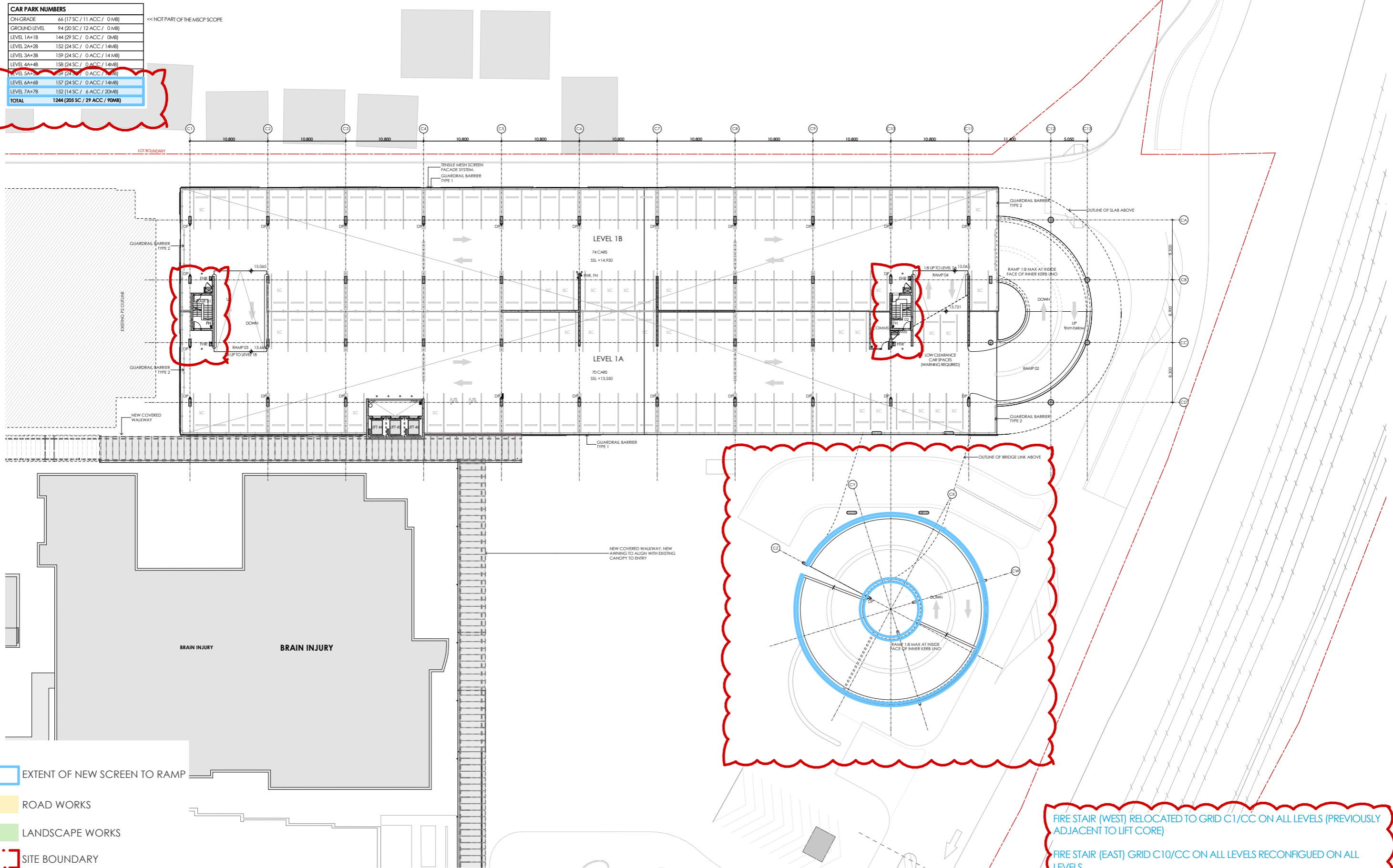
PROJECT NORTH
SCALE
1:500 @A3
25mm ON ORIGINAL

DRAWING
GA GROUND 02 (ROAD LAYOUT)
PRINT DATE
23/11/2021

PROJECT NO.
21807
STATUS
SSDA AMENDMENT
DRAWING NO.
A-SSDA-MSCP-07
ISSUE
08

CAR PARK NUMBERS	
ON-GRADE	66 (17 SC / 11 ACC / 0 MB)
GROUND LEVEL	94 (20 SC / 12 ACC / 0 MB)
LEVEL 1A+1B	144 (29 SC / 0 ACC / 0 MB)
LEVEL 2A+2B	152 (24 SC / 0 ACC / 14 MB)
LEVEL 3A+3B	159 (24 SC / 0 ACC / 14 MB)
LEVEL 4A+4B	158 (24 SC / 0 ACC / 14 MB)
LEVEL 5A+5B	159 (24 SC / 0 ACC / 14 MB)
LEVEL 6A+6B	157 (24 SC / 0 ACC / 14 MB)
LEVEL 7A+7B	152 (14 SC / 6 ACC / 20 MB)
TOTAL	1244 (205 SC / 29 ACC / 90 MB)

<< NOT PART OF THE MSCP SCOPE



FIRE STAIR (WEST) RELOCATED TO GRID C1/CC ON ALL LEVELS (PREVIOUSLY ADJACENT TO LIFT CORE)
 FIRE STAIR (EAST) GRID C10/CC ON ALL LEVELS RECONFIGURED ON ALL LEVELS
 NEW SCREEN TO RAMP

REV.	DATE	DESCRIPTION
06	24/04/20	FOR REVIEW
07	07/05/20	NOT USED
08	11/08/20	SSDA AMENDMENT
09	01/11/21	SSDA AMENDMENT

DESCRIPTION
 FOR REVIEW
 NOT USED
 SSDA AMENDMENT
 SSDA AMENDMENT

CHK
 RP
 RP
 RP
 RP

PROJECT
 LIVERPOOL HEALTH & ACADEMIC PRECINCT
 ELIZABETH STREET LIVERPOOL NSW
 CLIENT
 HEALTH INFRASTRUCTURE
 14/77 PACIFIC HWY, NORTH SYDNEY NSW 2060

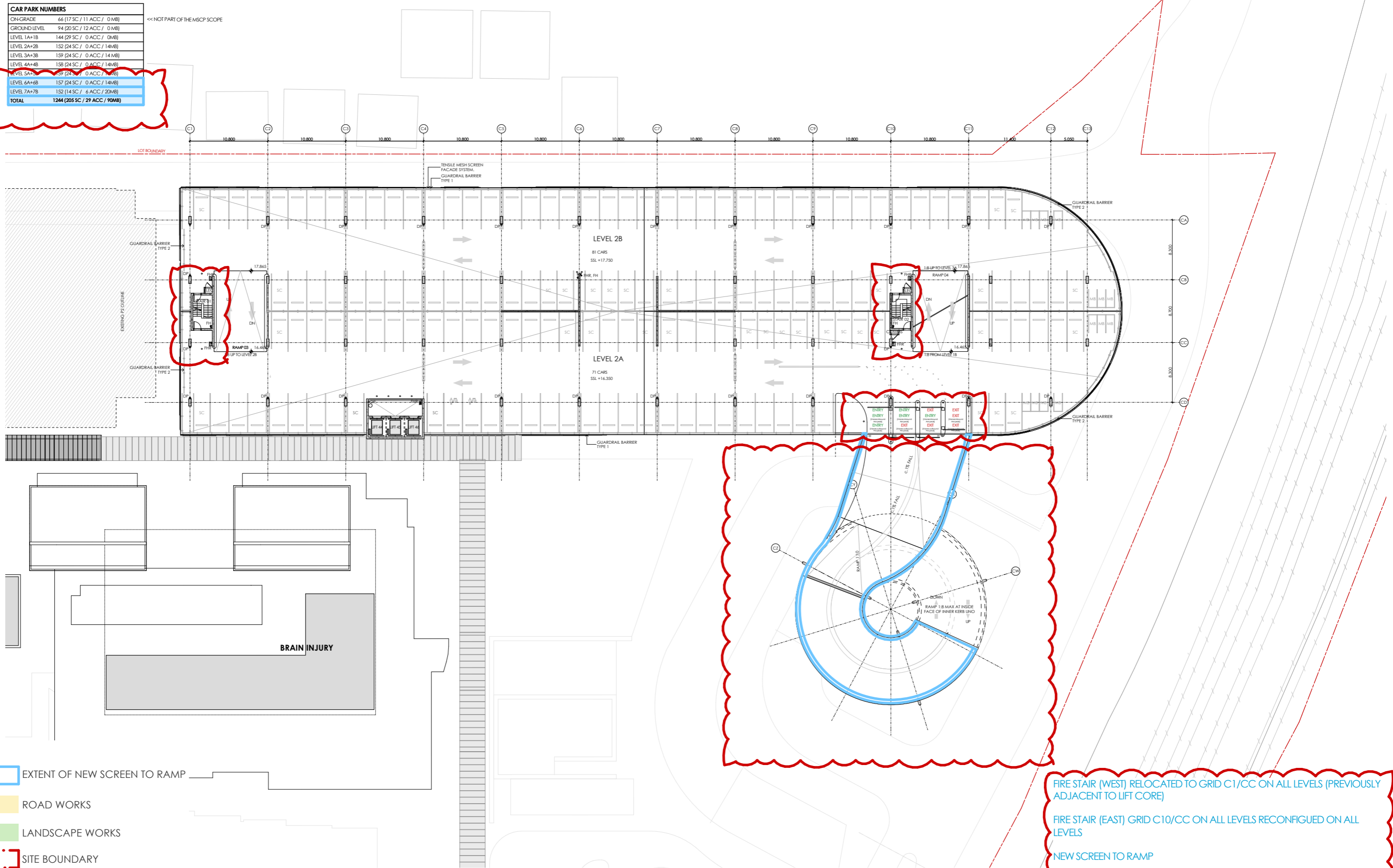
PROJECT NORTH
 SCALE
 1:500 @A3
 25mm ON ORIGINAL

DRAWING
 GA LEVEL 01
 PRINT DATE
 23/11/2021

PROJECT NO.
 21807
 DRAWING NO.
 A-SSDA-MSCP-08
 STATUS
 SSDA AMENDMENT
 ISSUE
 08

CAR PARK NUMBERS	
ON-GRADE	66 (17 SC / 11 ACC / 0 MB)
GROUND LEVEL	94 (20 SC / 12 ACC / 0 MB)
LEVEL 1A+1B	144 (29 SC / 0 ACC / 0 MB)
LEVEL 2A+2B	152 (24 SC / 0 ACC / 14 MB)
LEVEL 3A+3B	159 (24 SC / 0 ACC / 14 MB)
LEVEL 4A+4B	158 (24 SC / 0 ACC / 14 MB)
LEVEL 5A+5B	89 (24 SC / 0 ACC / 0 MB)
LEVEL 6A+6B	157 (24 SC / 0 ACC / 14 MB)
LEVEL 7A+7B	152 (14 SC / 6 ACC / 20 MB)
TOTAL	1244 (205 SC / 29 ACC / 90 MB)

<< NOT PART OF THE MSCP SCOPE



- EXTENT OF NEW SCREEN TO RAMP
- ROAD WORKS
- LANDSCAPE WORKS
- SITE BOUNDARY

FIRE STAIR (WEST) RELOCATED TO GRID C1/CC ON ALL LEVELS (PREVIOUSLY ADJACENT TO LIFT CORE)

FIRE STAIR (EAST) GRID C10/CC ON ALL LEVELS RECONFIGURED ON ALL LEVELS

NEW SCREEN TO RAMP

+ LEVEL 2 ENTRY DRIVEWAY RECONFIGURED TO ALLOW FOR TWO VEHICLE ENTRY LANES AND TWO VEHICLE EXIT LANES

AMENDMENTS		DESCRIPTION
REV.	DATE	
06	24/04/20	FOR REVIEW
07	07/05/20	NOT USED
08	11/08/20	SSDA AMENDMENT
09	01/11/21	SSDA AMENDMENT

CHK	PROJECT
RP	LIVERPOOL HEALTH & ACADEMIC PRECINCT
RP	ELIZABETH STREET LIVERPOOL NSW
RP	CLIENT
RP	HEALTH INFRASTRUCTURE
RP	14/77 PACIFIC HWY, NORTH SYDNEY NSW 2060

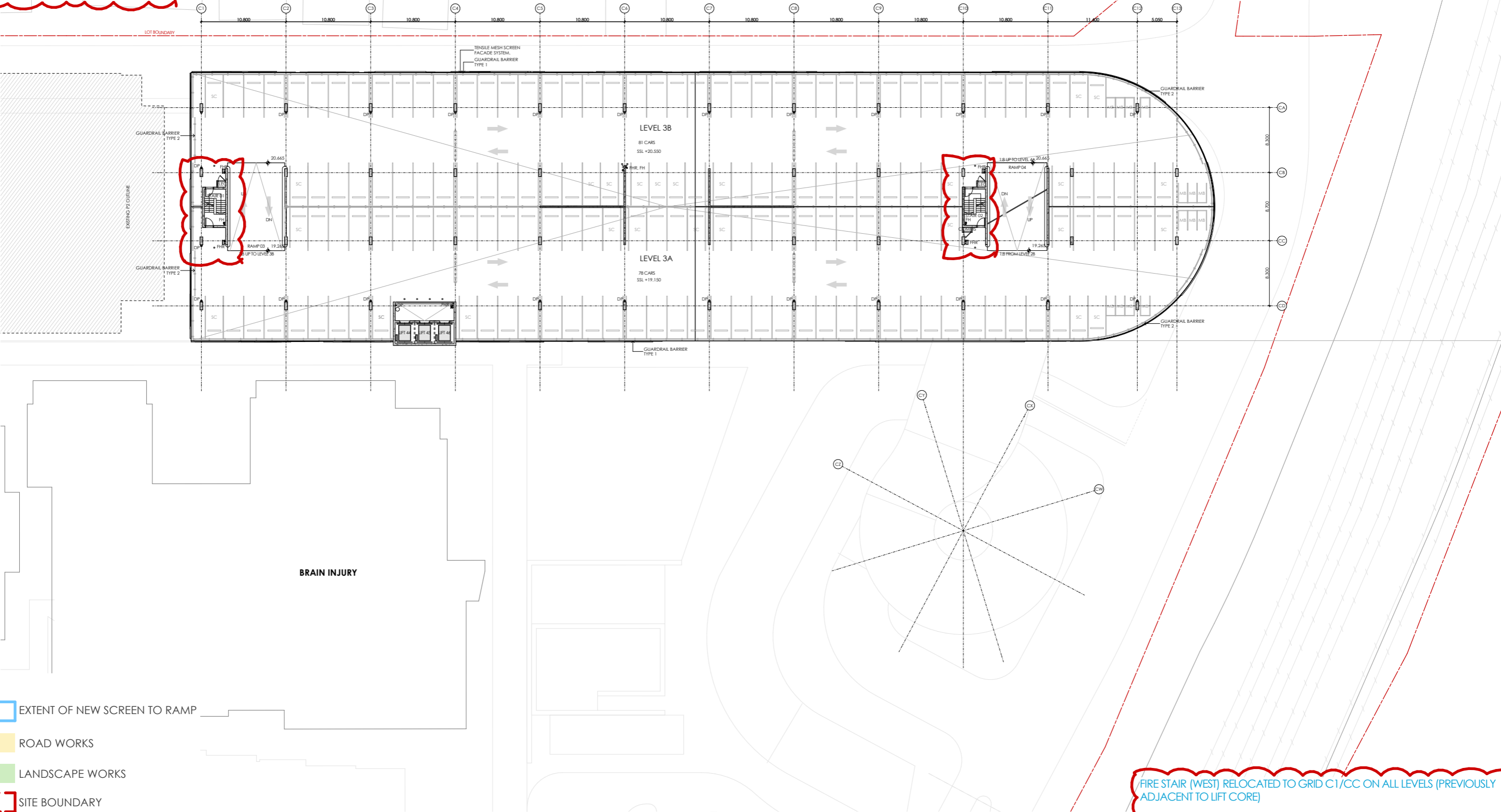
PROJECT NORTH	SCALE
	1:500 @A3
25mm ON ORIGINAL	

DRAWING
GA LEVEL 02
PRINT DATE
23/11/2021

PROJECT NO.	DRAWING NO.	ISSUE
21807	A-SSDA-MSCP-09	08
STATUS		
SSDA AMENDMENT		

CAR PARK NUMBERS	
ON GRADE	66 (17 SC / 11 ACC / 0 MB)
GROUND LEVEL	94 (20 SC / 12 ACC / 0 MB)
LEVEL 1A+1B	144 (29 SC / 0 ACC / 0 MB)
LEVEL 2A+2B	152 (24 SC / 0 ACC / 14 MB)
LEVEL 3A+3B	159 (24 SC / 0 ACC / 14 MB)
LEVEL 4A+4B	158 (24 SC / 0 ACC / 14 MB)
LEVEL 5A+5B	89 (24 SC / 0 ACC / 0 MB)
LEVEL 6A+6B	157 (24 SC / 0 ACC / 14 MB)
LEVEL 7A+7B	152 (14 SC / 6 ACC / 20 MB)
TOTAL	1244 (205 SC / 29 ACC / 90 MB)

<< NOT PART OF THE MSCP SCOPE



- EXTENT OF NEW SCREEN TO RAMP
- ROAD WORKS
- LANDSCAPE WORKS
- SITE BOUNDARY

FIRE STAIR (WEST) RELOCATED TO GRID C1/CC ON ALL LEVELS (PREVIOUSLY ADJACENT TO LIFT CORE)
 FIRE STAIR (EAST) GRID C10/CC ON ALL LEVELS RECONFIGURED ON ALL LEVELS

fitzpatrick+partners

© Copyright 2021
 p. +61 (0)2 8274 8200 w. www.fitzpatrickpartners.com
 a. LEVEL 6, 9 CASTLEREAGH ST, SYDNEY 2000, AUSTRALIA

THIS DRAWING IS ISSUED UPON THE CONDITION IT IS NOT COPIED, REPRODUCED, RETAINED OR DISCLOSED TO ANY UNAUTHORISED PERSON EITHER WHOLLY OR IN PART WITHOUT PRIOR CONSENT IN WRITING OF fitzpatrick+partners.
 DO NOT SCALE DRAWINGS. CHECK DIMENSIONS BEFORE COMMENCING WORK.
 DRAWINGS SHOW DESIGN INTENT ONLY. SHOP DRAWINGS ARE TO BE PROVIDED FOR APPROVAL PRIOR TO CONSTRUCTION OR MANUFACTURE. INCONSISTENCIES ARE TO BE REPORTED TO fitzpatrick + partners.

AMENDMENTS	
REV.	DATE
06	24/04/20
07	07/05/20
08	11/08/20
09	01/11/21

CHK	DESCRIPTION
RP	FOR REVIEW
RP	NOT USED
RP	SSDA AMENDMENT
RP	SSDA AMENDMENT

PROJECT
 LIVERPOOL HEALTH & ACADEMIC PRECINCT
 ELIZABETH STREET LIVERPOOL NSW
 CLIENT
 HEALTH INFRASTRUCTURE
 14/77 PACIFIC HWY, NORTH SYDNEY NSW 2060

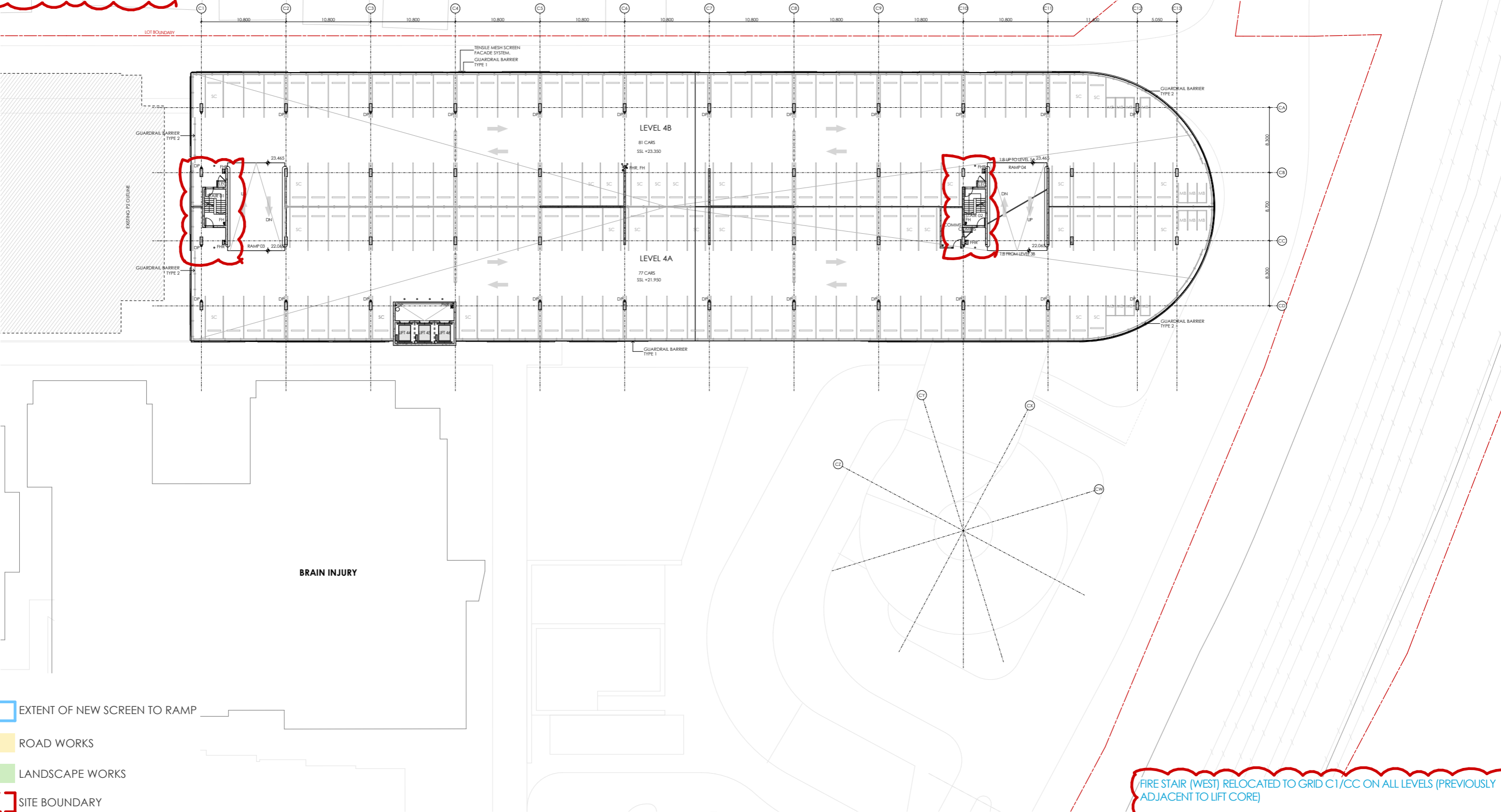
PROJECT NORTH SCALE
 1:500 @A3
 25mm ON ORIGINAL

DRAWING
 GA LEVEL 03
 PRINT DATE
 23/11/2021

PROJECT NO. 21807	DRAWING NO. A-SSDA-MSCP-10	ISSUE 08
STATUS SSDA AMENDMENT		

CAR PARK NUMBERS	
ON GRADE	66 (17 SC / 11 ACC / 0 MB)
GROUND LEVEL	94 (20 SC / 12 ACC / 0 MB)
LEVEL 1A+1B	144 (29 SC / 0 ACC / 0 MB)
LEVEL 2A+2B	152 (24 SC / 0 ACC / 14 MB)
LEVEL 3A+3B	159 (24 SC / 0 ACC / 14 MB)
LEVEL 4A+4B	158 (24 SC / 0 ACC / 14 MB)
LEVEL 5A+5B	89 (24 SC / 0 ACC / 0 MB)
LEVEL 6A+6B	157 (24 SC / 0 ACC / 14 MB)
LEVEL 7A+7B	152 (14 SC / 6 ACC / 20 MB)
TOTAL	1244 (205 SC / 29 ACC / 90 MB)

<< NOT PART OF THE MSCP SCOPE



- EXTENT OF NEW SCREEN TO RAMP
- ROAD WORKS
- LANDSCAPE WORKS
- SITE BOUNDARY

FIRE STAIR (WEST) RELOCATED TO GRID C1/CC ON ALL LEVELS (PREVIOUSLY ADJACENT TO LIFT CORE)
 FIRE STAIR (EAST) GRID C10/CC ON ALL LEVELS RECONFIGURED ON ALL LEVELS

fitzpatrick+partners

© Copyright 2021
 p. +61 (0)2 8274 8200 w. www.fitzpatrickpartners.com
 a. LEVEL 6, 9 CASTLEREAGH ST, SYDNEY 2000, AUSTRALIA

THIS DRAWING IS ISSUED UPON THE CONDITION IT IS NOT COPIED, REPRODUCED, RETAINED OR DISCLOSED TO ANY UNAUTHORISED PERSON EITHER WHOLLY OR IN PART WITHOUT PRIOR CONSENT IN WRITING OF fitzpatrick+partners.
 DO NOT SCALE DRAWINGS. CHECK DIMENSIONS BEFORE COMMENCING WORK.
 DRAWINGS SHOW DESIGN INTENT ONLY. SHOP DRAWINGS ARE TO BE PROVIDED FOR APPROVAL PRIOR TO CONSTRUCTION OR MANUFACTURE. INCONSISTENCIES ARE TO BE REPORTED TO fitzpatrick + partners.

AMENDMENTS		DESCRIPTION
REV.	DATE	
06	24/04/20	FOR REVIEW
07	07/05/20	NOT USED
08	11/08/20	SSDA AMENDMENT
09	01/11/21	SSDA AMENDMENT

CHK RP RP RP RP
 PROJECT LIVERPOOL HEALTH & ACADEMIC PRECINCT
 ELIZABETH STREET LIVERPOOL NSW
 CLIENT HEALTH INFRASTRUCTURE
 14/77 PACIFIC HWY, NORTH SYDNEY NSW 2060

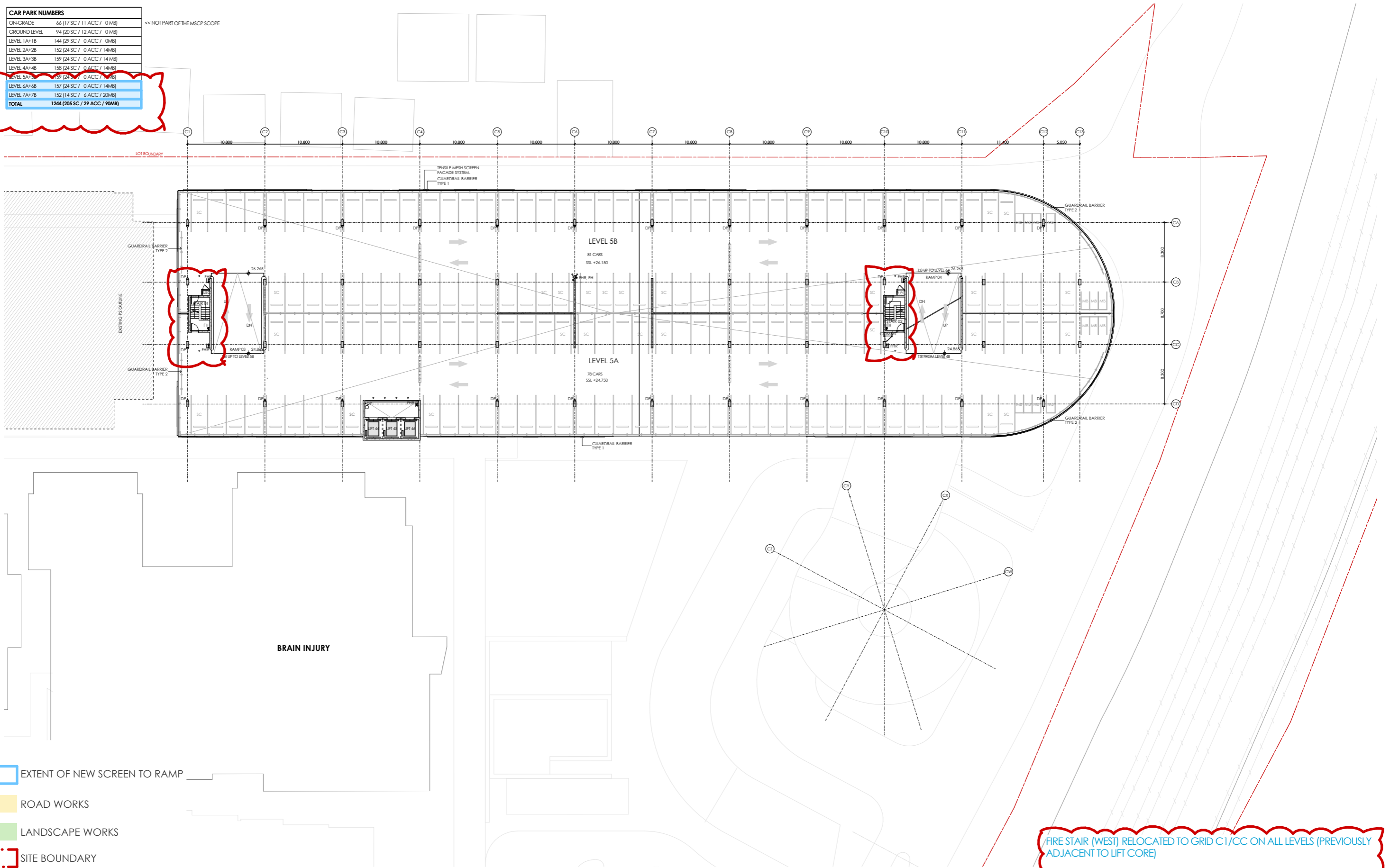
PROJECT NORTH SCALE 1:500 @A3
 25mm ON ORIGINAL

DRAWING GA LEVEL 04
 PRINT DATE 23/11/2021

PROJECT NO. 21807	DRAWING NO. A-SSDA-MSCP-11	ISSUE 08
STATUS		SSDA AMENDMENT

CAR PARK NUMBERS	
ON GRADE	66 (17 SC / 11 ACC / 0 MB)
GROUND LEVEL	94 (20 SC / 12 ACC / 0 MB)
LEVEL 1A+1B	144 (29 SC / 0 ACC / 0 MB)
LEVEL 2A+2B	152 (24 SC / 0 ACC / 14 MB)
LEVEL 3A+3B	159 (24 SC / 0 ACC / 14 MB)
LEVEL 4A+4B	158 (24 SC / 0 ACC / 14 MB)
LEVEL 5A+5B	159 (24 SC / 0 ACC / 14 MB)
LEVEL 6A+6B	157 (24 SC / 0 ACC / 14 MB)
LEVEL 7A+7B	152 (14 SC / 6 ACC / 20 MB)
TOTAL	1244 (205 SC / 29 ACC / 90 MB)

<< NOT PART OF THE MSCP SCOPE



FIRE STAIR (WEST) RELOCATED TO GRID C1/CC ON ALL LEVELS (PREVIOUSLY ADJACENT TO LIFT CORE)

FIRE STAIR (EAST) GRID C10/CC ON ALL LEVELS RECONFIGURED ON ALL LEVELS

- EXTENT OF NEW SCREEN TO RAMP
- ROAD WORKS
- LANDSCAPE WORKS
- SITE BOUNDARY

fitzpatrick+partners

© Copyright 2021
p. +61 (0)2 8274 8200 w. www.fitzpatrickpartners.com
a. LEVEL 6, 9 CASTLEREAGH ST, SYDNEY 2000, AUSTRALIA

THIS DRAWING IS ISSUED UPON THE CONDITION IT IS NOT COPIED, REPRODUCED, RETAINED OR DISCLOSED TO ANY UNAUTHORISED PERSON EITHER WHOLLY OR IN PART WITHOUT PRIOR CONSENT IN WRITING OF fitzpatrick+partners.
DO NOT SCALE DRAWINGS. CHECK DIMENSIONS BEFORE COMMENCING WORK.
DRAWINGS SHOW DESIGN INTENT ONLY. SHOP DRAWINGS ARE TO BE PROVIDED FOR APPROVAL PRIOR TO CONSTRUCTION OR MANUFACTURE. INCONSISTENCIES ARE TO BE REPORTED TO fitzpatrick + partners.

REV.	DATE	DESCRIPTION
06	24/04/20	FOR REVIEW
07	07/05/20	NOT USED
08	11/08/20	SSDA AMENDMENT
09	01/11/21	SSDA AMENDMENT

DESCRIPTION
FOR REVIEW
NOT USED
SSDA AMENDMENT
SSDA AMENDMENT

CHK
RP
RP
RP
RP

PROJECT
LIVERPOOL HEALTH & ACADEMIC PRECINCT
ELIZABETH STREET LIVERPOOL NSW
CLIENT
HEALTH INFRASTRUCTURE
14/77 PACIFIC HWY, NORTH SYDNEY NSW 2060

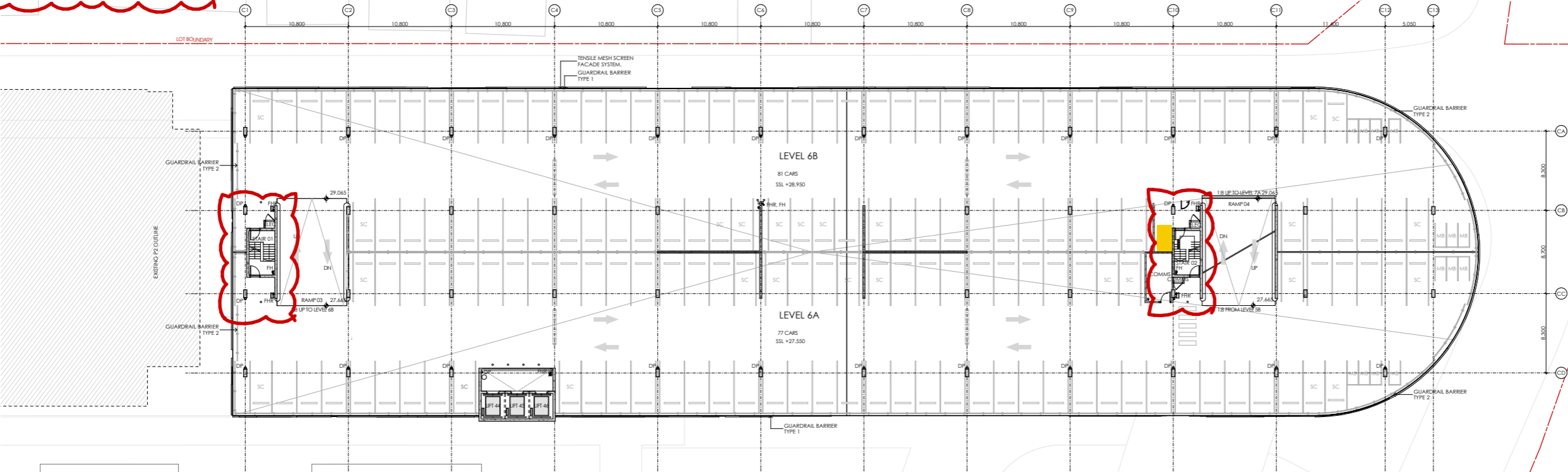
PROJECT NORTH SCALE
1:500 @A3
25mm ON ORIGINAL

DRAWING
GA LEVEL 05
PRINT DATE
23/11/2021

PROJECT NO. 21807
DRAWING NO. A-SSDA-MSCP-12
ISSUE 08
STATUS
SSDA AMENDMENT

CAR PARK NUMBERS	
ON GRADE	66 (17 SC / 11 ACC / 0 MB)
GROUND LEVEL	94 (20 SC / 12 ACC / 0 MB)
LEVEL 1A+1B	144 (29 SC / 0 ACC / 0 MB)
LEVEL 2A+2B	152 (24 SC / 0 ACC / 14 MB)
LEVEL 3A+3B	159 (24 SC / 0 ACC / 14 MB)
LEVEL 4A+4B	158 (24 SC / 0 ACC / 14 MB)
LEVEL 5A+5B	159 (24 SC / 0 ACC / 14 MB)
LEVEL 6A+6B	157 (24 SC / 0 ACC / 14 MB)
LEVEL 7A+7B	152 (14 SC / 6 ACC / 20 MB)
TOTAL	1244 (205 SC / 29 ACC / 90 MB)

<< NOT PART OF THE MSCP SCOPE



- LOCATION OF PV INVERTORS FOR NEW SOLAR PANELS
- MODIFICATION TO CAR PARK NUMBERS
- SITE BOUNDARY

FIRE STAIR (WEST) RELOCATED TO GRID C1/CC ON ALL LEVELS (PREVIOUSLY ADJACENT TO LIFT CORE)
 FIRE STAIR (EAST) GRID C10/CC ON ALL LEVELS RECONFIGURED ON ALL LEVELS
 REMOVAL OF ONE CAR BAY TO ALLOW FOR NEW SOLAR PANEL ARRAY INVERTORS

fitzpatrick+partners

© Copyright 2021
 p. +61 (0)2 8274 8200 w. www.fitzpatrickpartners.com
 a. LEVEL 6, 9 CASTLEREAGH ST, SYDNEY 2000, AUSTRALIA

THIS DRAWING IS ISSUED UPON THE CONDITION IT IS NOT COPIED, REPRODUCED, RETAINED OR DISCLOSED TO ANY UNAUTHORISED PERSON EITHER WHOLLY OR IN PART WITHOUT PRIOR CONSENT IN WRITINGS OF fitzpatrick+partners.
 DO NOT SCALE DRAWINGS. CHECK DIMENSIONS BEFORE COMMENCING WORK.
 DRAWINGS SHOW DESIGN INTENT ONLY. SHOP DRAWINGS ARE TO BE PROVIDED FOR APPROVAL PRIOR TO CONSTRUCTION OR MANUFACTURE.
 INCONSISTENCIES ARE TO BE REPORTED TO fitzpatrick + partners.

AMENDMENTS	
REV.	DATE
06	24/04/20
07	07/05/20
08	11/08/20
09	01/11/21

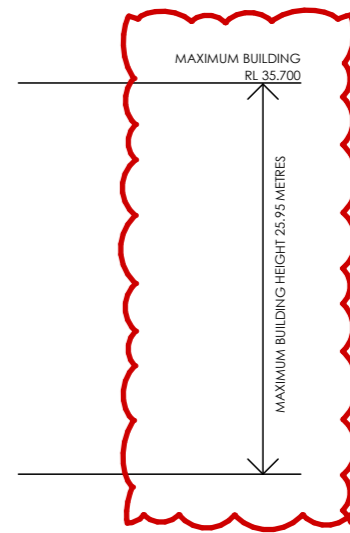
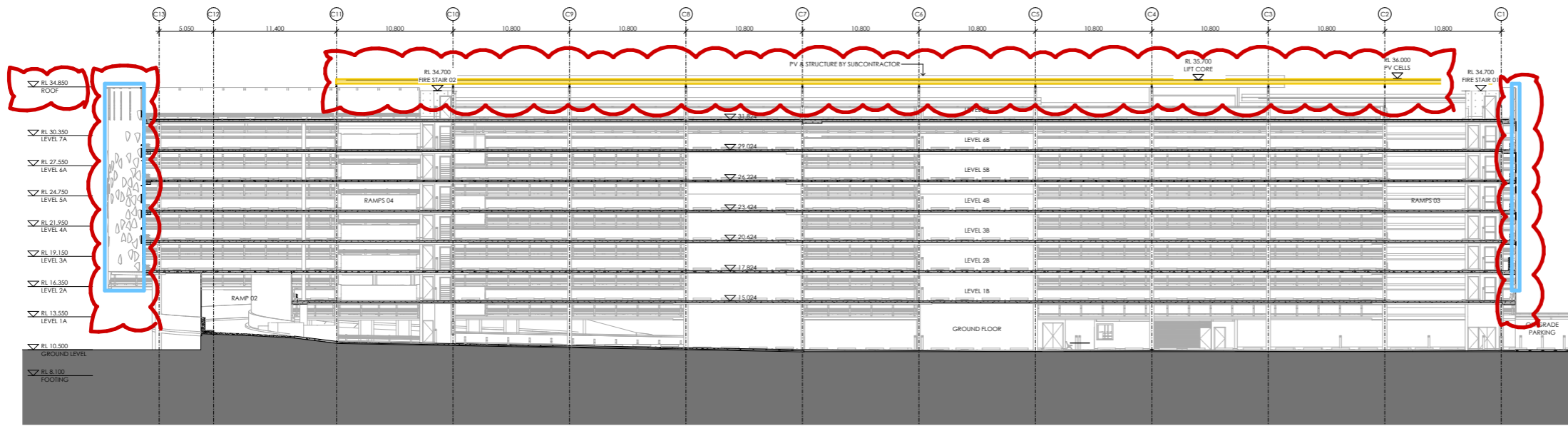
CHK	DESCRIPTION
RP	FOR REVIEW
RP	NOT USED
RP	SSDA AMENDMENT
RP	SSDA AMENDMENT

PROJECT NORTH SCALE
 1:500 @A3
 25mm ON ORIGINAL

DRAWING GA LEVEL 06
 PRINT DATE 23/11/2021

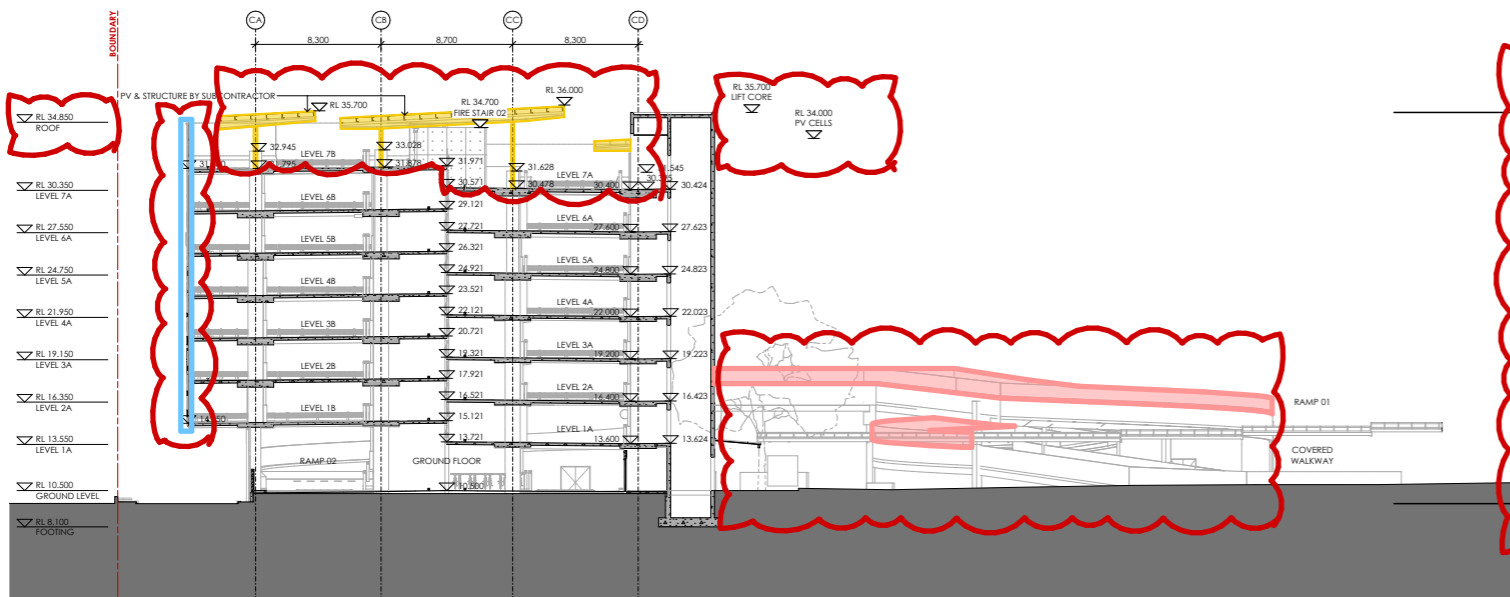
PROJECT NO. 21807	DRAWING NO. A-SSDA-MSCP-13	ISSUE 08
STATUS SSDA AMENDMENT		

LEP HEIGHT CONTROL
35m ABOVE GROUND

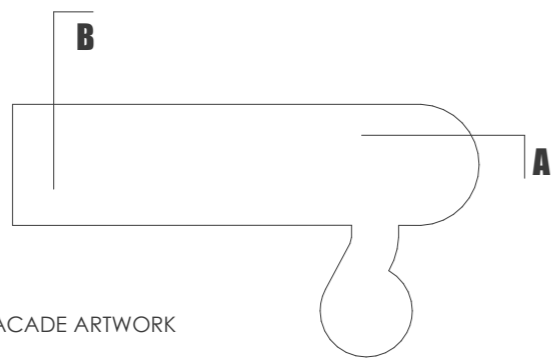


SECTION A

LEP HEIGHT CONTROL
35m ABOVE GROUND



SECTION B



A NEW FAÇADE ARTWORK TO REPLACE THE PREVIOUS FAÇADE DESIGN.

THE ADDITION OF A PERFORATED METAL SAFETY SCREEN TO THE SPIRAL RAMP.

ADJUSTMENTS TO THE HEIGHT OF THE FAÇADE

- EXTENT OF NEW FAÇADE ARTWORK
- EXTENT OF NEW SOLAR PANEL ARRAY
- EXTENT OF NEW SAFETY SCREEN TO RAMP

AMENDMENTS	REV.	DATE	DESCRIPTION
	06	24/04/20	FOR REVIEW
	07	07/05/20	NOT USED
	08	11/08/20	SSDA AMENDMENT
	09	01/11/21	SSDA AMENDMENT

CHK	PROJECT
RP	LIVERPOOL HEALTH & ACADEMIC PRECINCT
RP	ELIZABETH STREET LIVERPOOL NSW
RP	CLIENT
RP	HEALTH INFRASTRUCTURE
RP	14/77 PACIFIC HWY, NORTH SYDNEY NSW 2060

PROJECT NORTH	SCALE
	1:500 @A3

25mm ON ORIGINAL

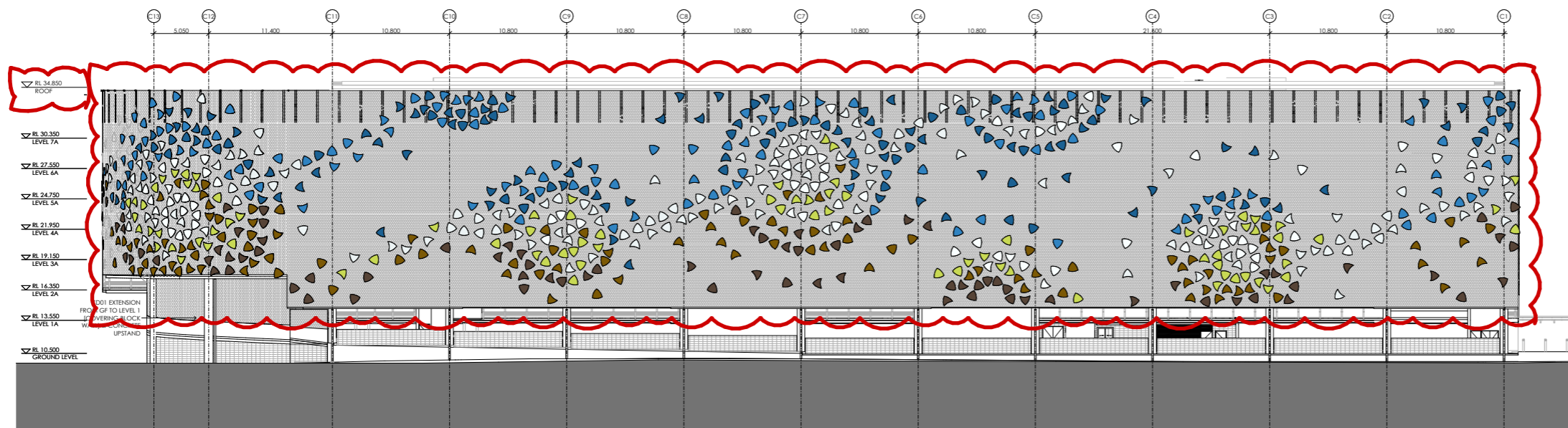
DRAWING
SECTIONS

PRINT DATE
23/11/2021

PROJECT NO.	DRAWING NO.	ISSUE
21807	A-SSDA-MSCP-14	08

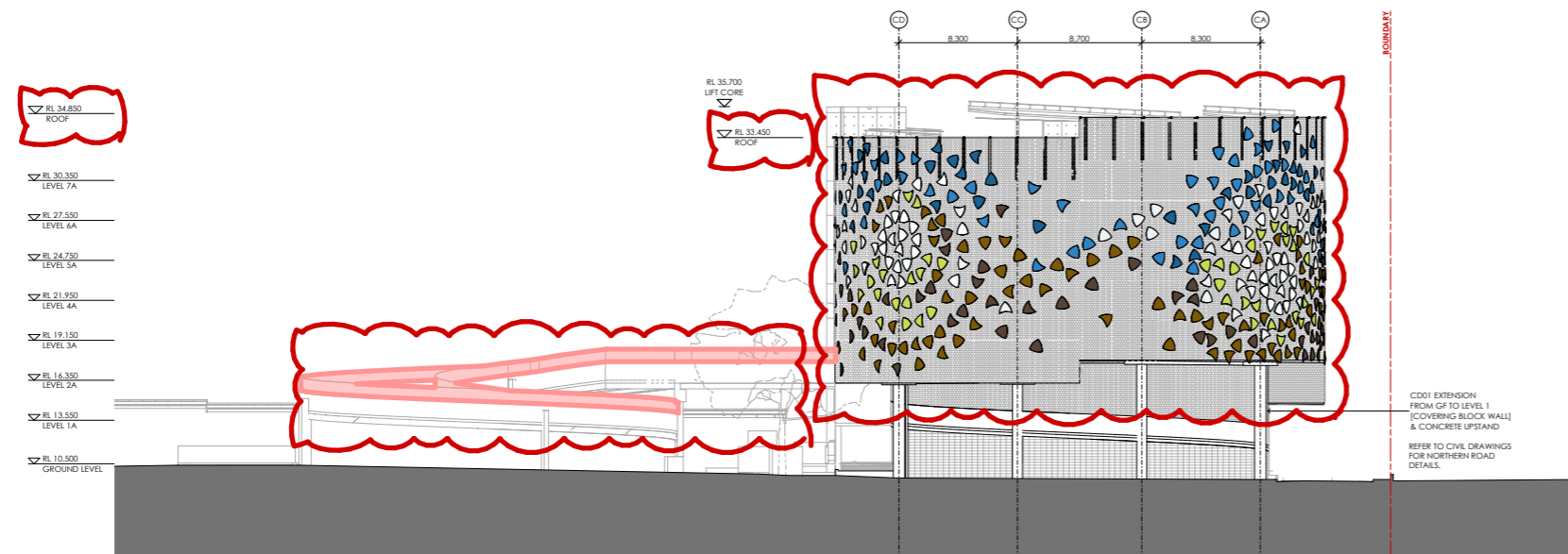
STATUS
SSDA AMENDMENT

LEP HEIGHT CONTROL
35m ABOVE GROUND

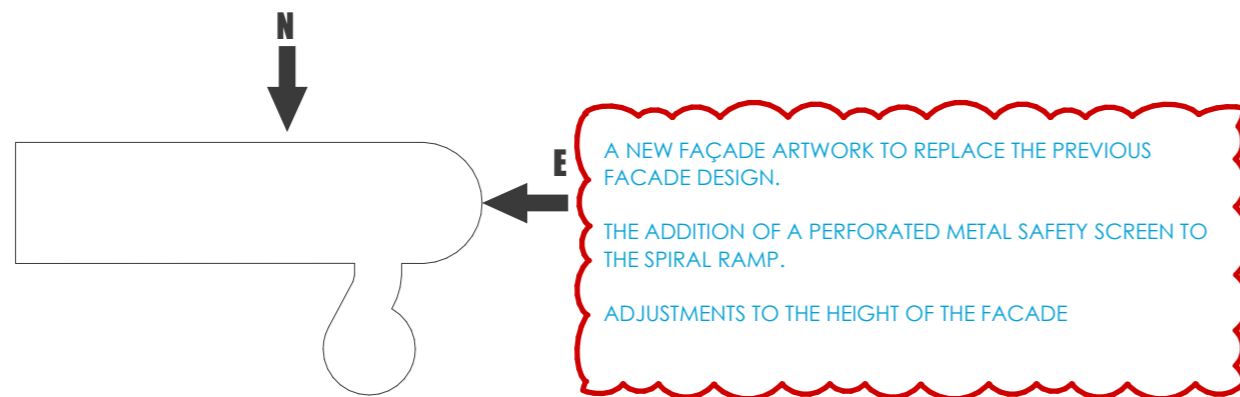


NORTH ELEVATION

LEP HEIGHT CONTROL
35m ABOVE GROUND



EAST ELEVATION



EXTENT OF NEW SAFETY SCREEN TO RAMP

fitzpatrick+partners

© Copyright 2021
p. +61 (0)2 8274 8200 w. www.fitzpatrickpartners.com
a. LEVEL 6, 9 CASTLEREAGH ST, SYDNEY 2000, AUSTRALIA

THIS DRAWING IS ISSUED UPON THE CONDITION IT IS NOT COPIED, REPRODUCED, RETAINED OR DISCLOSED TO ANY UNAUTHORISED PERSON EITHER WHOLLY OR IN PART WITHOUT PRIOR CONSENT IN WRITING OF fitzpatrick+partners.
DO NOT SCALE DRAWINGS. CHECK DIMENSIONS BEFORE COMMENCING WORK.
DRAWINGS SHOW DESIGN INTENT ONLY. SHOP DRAWINGS ARE TO BE PROVIDED FOR APPROVAL PRIOR TO CONSTRUCTION OR MANUFACTURE. INCONSISTENCIES ARE TO BE REPORTED TO fitzpatrick + partners.

REV.	DATE	DESCRIPTION
06	24/04/20	FOR REVIEW
07	07/05/20	NOT USED
08	11/08/20	SSDA AMENDMENT
09	01/11/21	SSDA AMENDMENT

DESCRIPTION
FOR REVIEW
NOT USED
SSDA AMENDMENT
SSDA AMENDMENT

CHK
RP
RP
RP
RP

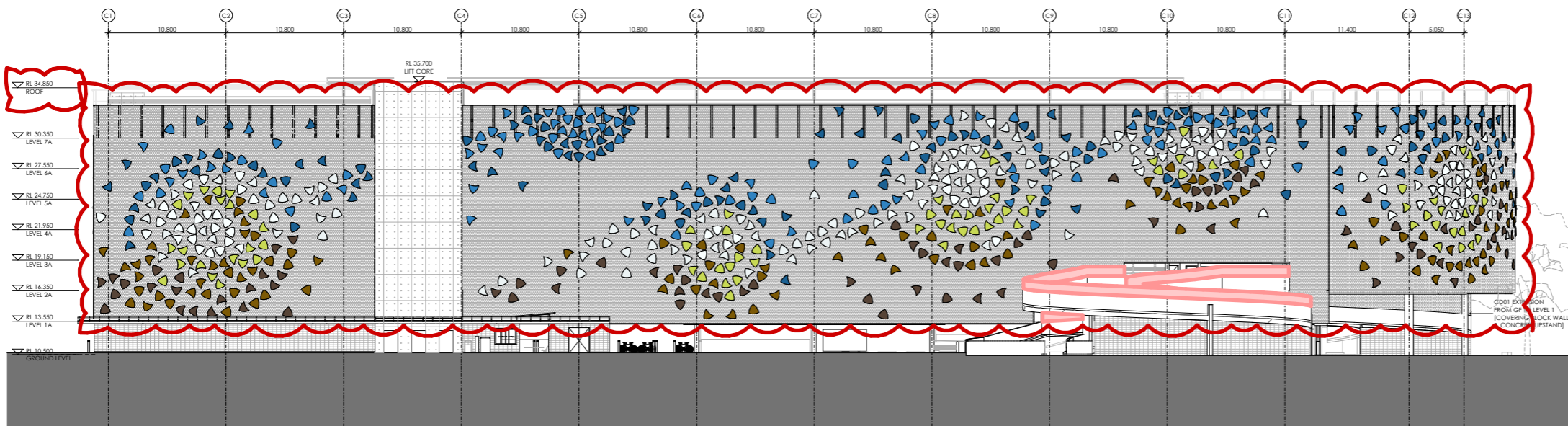
PROJECT
LIVERPOOL HEALTH & ACADEMIC PRECINCT
ELIZABETH STREET LIVERPOOL NSW
CLIENT
HEALTH INFRASTRUCTURE
14/77 PACIFIC HWY, NORTH SYDNEY NSW 2060

PROJECT NORTH SCALE
1:500 @A3
25mm ON ORIGINAL

DRAWING
ELEVATIONS
PRINT DATE
23/11/2021

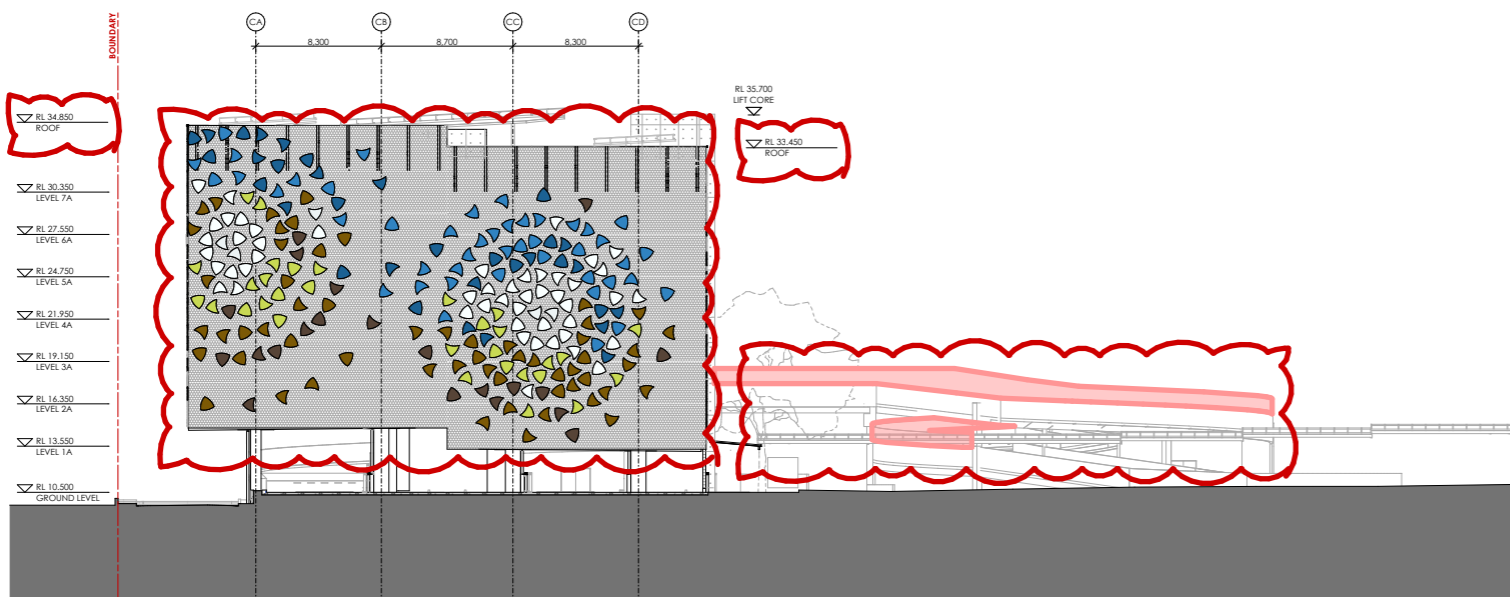
PROJECT NO.
21807
DRAWING NO.
A-SSDA-MSCP-15
ISSUE
08
STATUS
SSDA AMENDMENT

LEP HEIGHT CONTROL
35m ABOVE GROUND

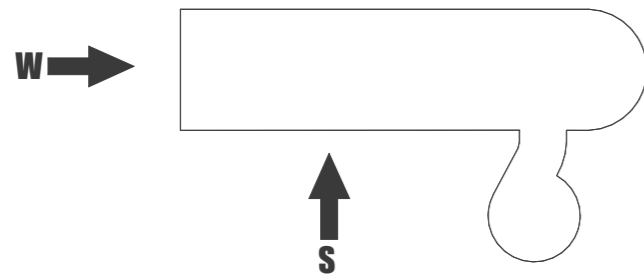


SOUTH ELEVATION

LEP HEIGHT CONTROL
35m ABOVE GROUND



WEST ELEVATION



A NEW FAÇADE ARTWORK TO REPLACE THE PREVIOUS FAÇADE DESIGN.

THE ADDITION OF A PERFORATED METAL SAFETY SCREEN TO THE SPIRAL RAMP.

ADJUSTMENTS TO THE HEIGHT OF THE FAÇADE

EXTENT OF NEW SAFETY SCREEN TO RAMP

fitzpatrick+partners

© Copyright 2021
p. +61 (0)2 8274 8200 w. www.fitzpatrickpartners.com
a. LEVEL 6, 9 CASTLEREAGH ST, SYDNEY 2000, AUSTRALIA

THIS DRAWING IS ISSUED UPON THE CONDITION IT IS NOT COPIED, REPRODUCED, RETAINED OR DISCLOSED TO ANY UNAUTHORISED PERSON EITHER WHOLLY OR IN PART WITHOUT PRIOR CONSENT IN WRITING OF fitzpatrick+partners.
DO NOT SCALE DRAWINGS. CHECK DIMENSIONS BEFORE COMMENCING WORK.
DRAWINGS SHOW DESIGN INTENT ONLY. SHOP DRAWINGS ARE TO BE PROVIDED FOR APPROVAL PRIOR TO CONSTRUCTION OR MANUFACTURE. INCONSISTENCIES ARE TO BE REPORTED TO fitzpatrick + partners.

REV.	DATE	DESCRIPTION
06	24/04/20	FOR REVIEW
07	07/05/20	NOT USED
08	11/08/20	SSDA AMENDMENT
09	01/11/21	SSDA AMENDMENT

DESCRIPTION
FOR REVIEW
NOT USED
SSDA AMENDMENT
SSDA AMENDMENT

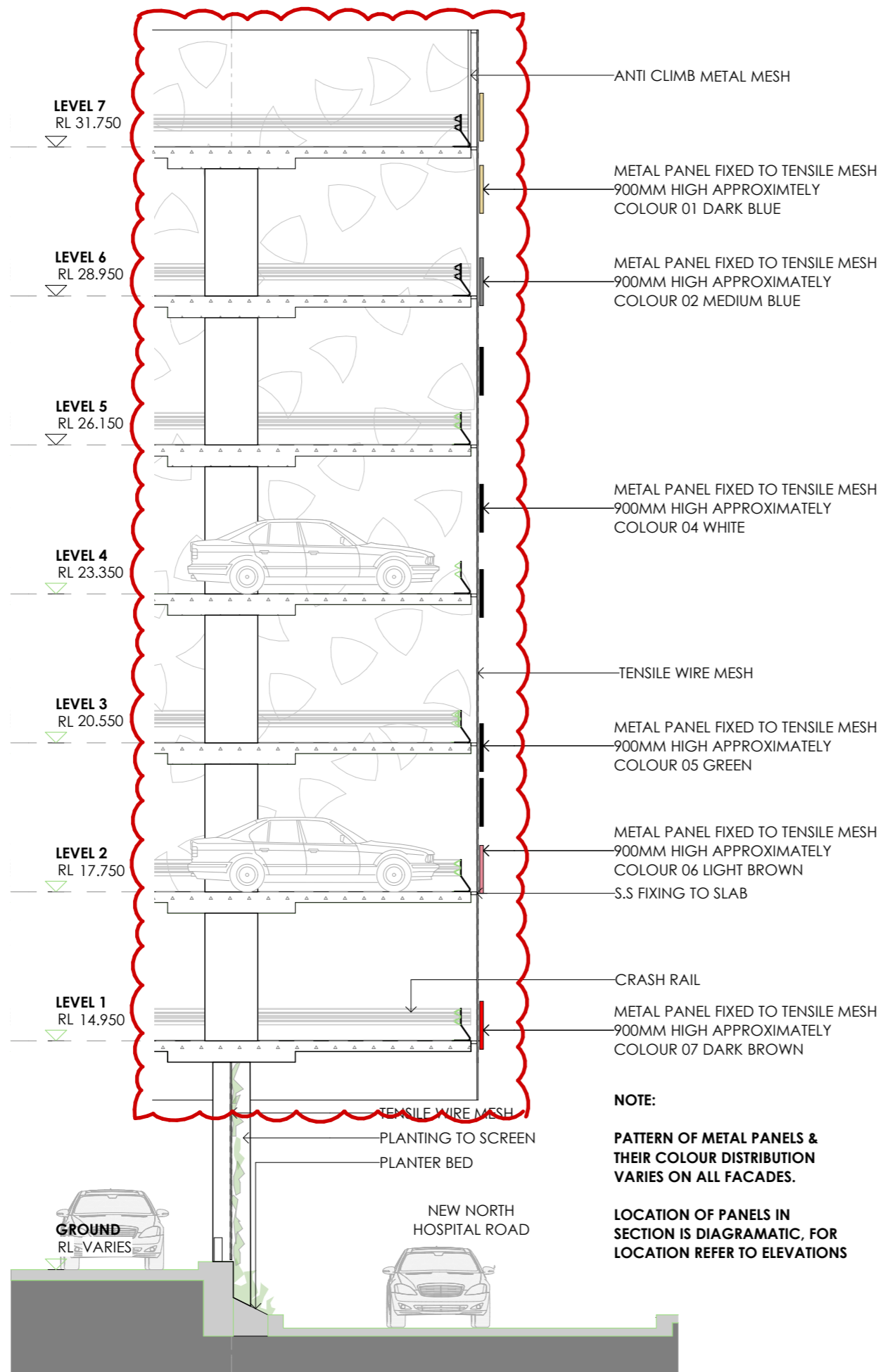
CHK
RP
RP
RP
RP

PROJECT
LIVERPOOL HEALTH & ACADEMIC PRECINCT
ELIZABETH STREET LIVERPOOL NSW
CLIENT
HEALTH INFRASTRUCTURE
14/77 PACIFIC HWY, NORTH SYDNEY NSW 2060

PROJECT NORTH SCALE
1:500 @A3
25mm ON ORIGINAL

DRAWING
ELEVATIONS
PRINT DATE
23/11/2021

PROJECT NO.	DRAWING NO.	ISSUE
21807	A-SSDA-MSCP-16	08
STATUS SSDA AMENDMENT		



TYPICAL FACADE SECTION

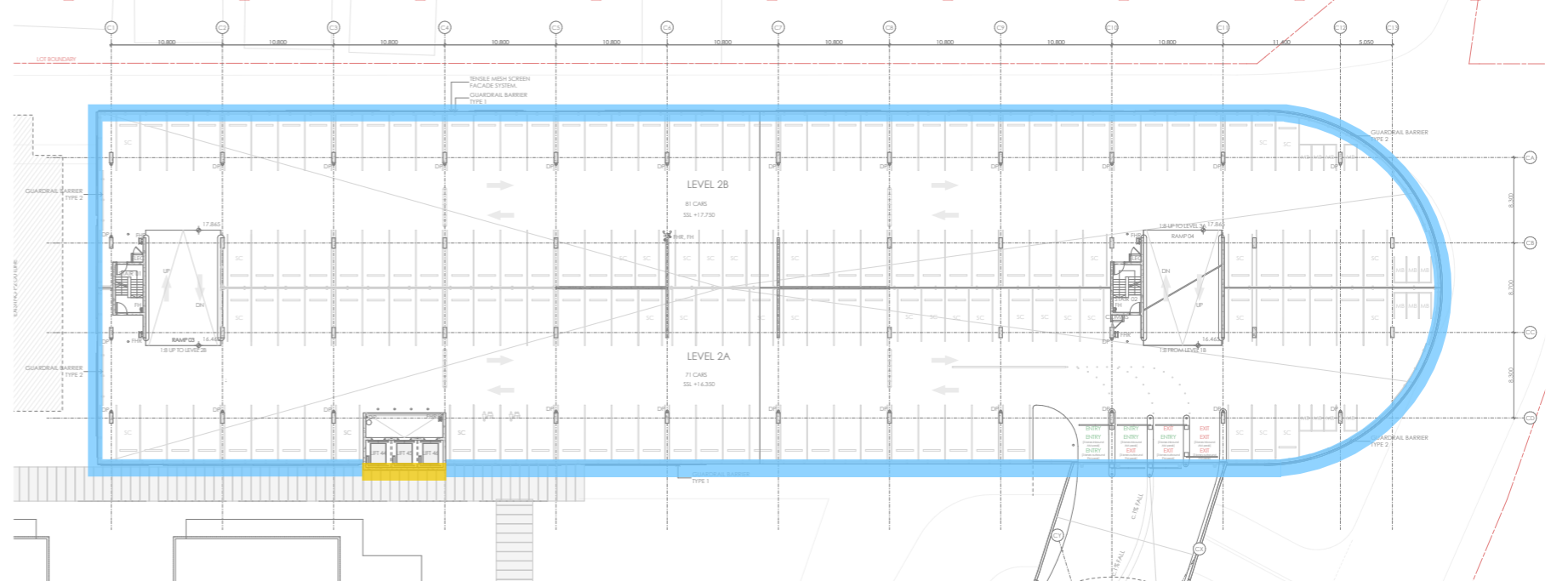




FREE AREA CALCULATION

ALUMINIUM PANELS (12.3% SOLID AREA)
 TENSILE MESH (100% OPEN AREA)
TOTAL OPEN AREA = APPROX 87.7%

CONCRETE BLOCK WALL
TOTAL OPEN AREA = 0%



fitzpatrick+partners

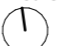
© Copyright 2021
 p. +61 (0)2 8274 8200 w. www.fitzpatrickpartners.com
 G. LEVEL 6, 9 CASTLEREAGH ST, SYDNEY 2000, AUSTRALIA

THIS DRAWING IS ISSUED UPON THE CONDITION IT IS NOT COPIED, REPRODUCED, RETAINED OR DISCLOSED TO ANY UNAUTHORISED PERSON EITHER WHOLLY OR IN PART WITHOUT PRIOR CONSENT IN WRITING OF fitzpatrick+partners
 DO NOT SCALE DRAWINGS. CHECK DIMENSIONS BEFORE COMMENCING WORK.
 DRAWINGS SHOW DESIGN INTENT ONLY. SHOP DRAWINGS ARE TO BE PROVIDED FOR APPROVAL PRIOR TO CONSTRUCTION OR MANUFACTURE. INCONSISTENCIES ARE TO BE REPORTED TO fitzpatrick + partners.

REV.	DATE
06	24/04/20
07	07/05/20
08	11/08/20
09	01/11/21

DESCRIPTION
 FOR REVIEW
 NOT USED
 SSDA AMENDMENT
 SSDA AMENDMENT

CHK RP RP RP RP RP
 PROJECT LIVERPOOL HEALTH & ACADEMIC PRECINCT
 ELIZABETH STREET LIVERPOOL NSW
 CLIENT HEALTH INFRASTRUCTURE
 14/77 PACIFIC HWY, NORTH SYDNEY NSW 2060

PROJECT NORTH SCALE

 25mm ON ORIGINAL

DRAWING FACADE DETAILS
 PRINT DATE 23/11/2021

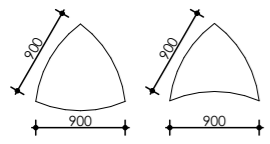
PROJECT NO. 21807 DRAWING NO. A-SSDA-MSCP-18 ISSUE 08
 STATUS
SSDA AMENDMENT



A STAINLESS STEEL
ANTI-CLIMB METAL MESH



B ALUMINIUM PANELS FIXED TO TENSILE WIRE MESH
COLOUR 01 DARK BLUE
COLOUR 02 MID BLUE
COLOUR 03 LIGHT BLUE
COLOUR 04 WHITE
COLOUR 05 GREEN
COLOUR 06 LIGHT BROWN
COLOUR 07 DARK BROWN



PANEL SIZES



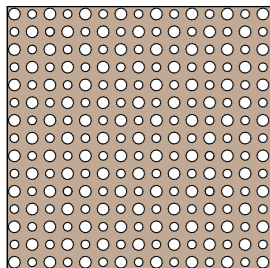
C STAINLESS STEEL HI-TENSILE WIRE MESH



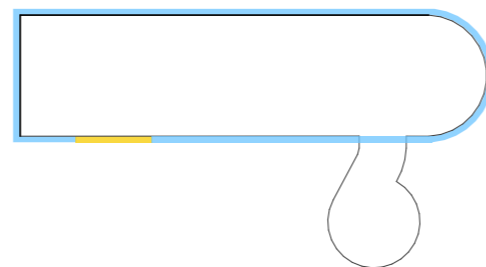
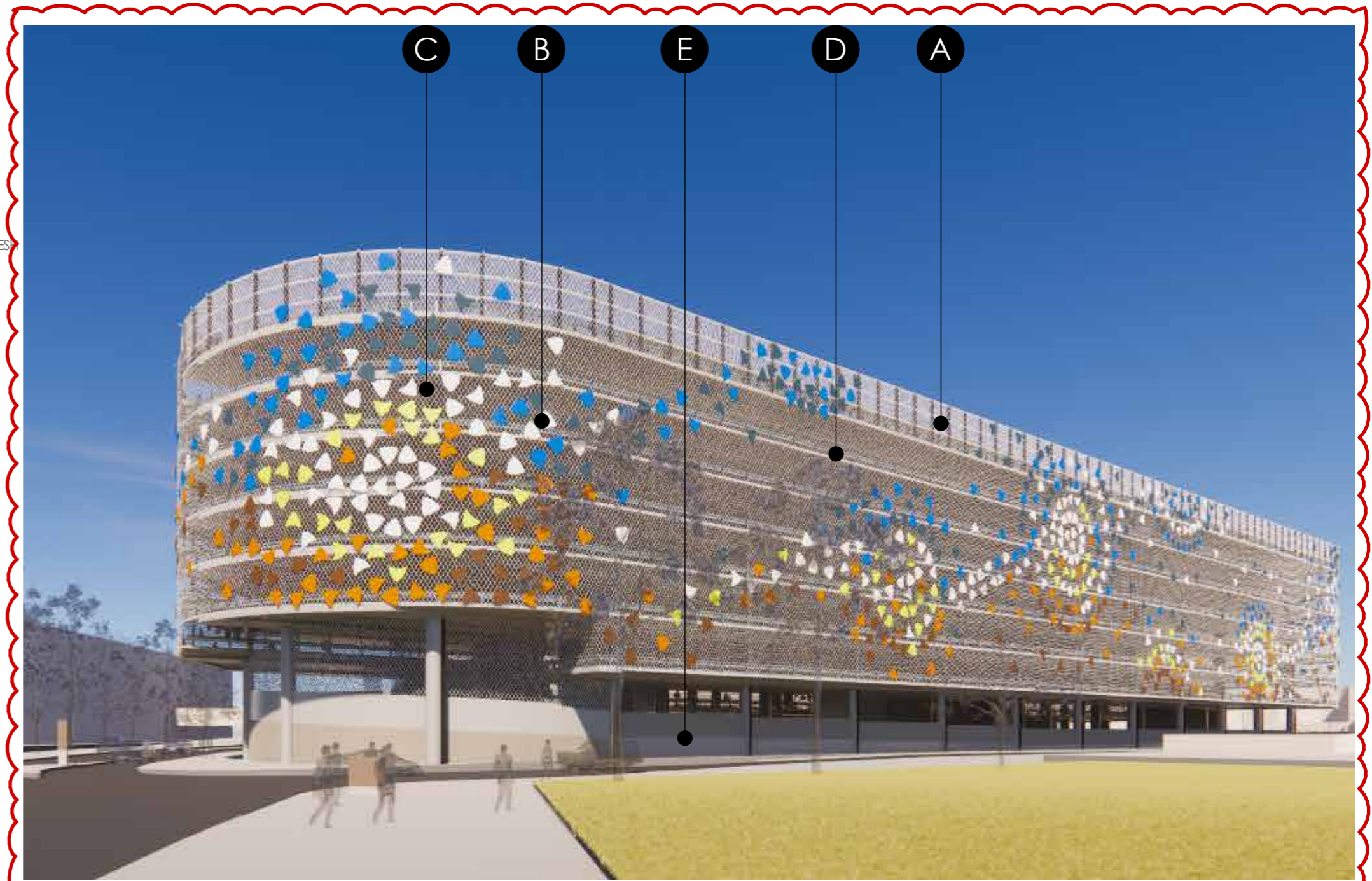
D CRASH BARRIER
TYPE 1 : STANDARD BARRIER
TYPE 2 : HEAVY DUTY BARRIER



E CONCRETE



F PERFORATED METAL PANEL
COLOUR: BROWN



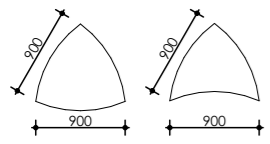
A NEW FAÇADE ARTWORK TO REPLACE THE PREVIOUS FAÇADE DESIGN.
THE ADDITION OF A PERFORATED METAL SAFETY SCREEN TO THE SPIRAL RAMP.
ADJUSTMENTS TO THE HEIGHT OF THE FAÇADE



A STAINLESS STEEL
ANTI-CLIMB METAL MESH



B ALUMINIUM PANELS FIXED TO TENSILE WIRE MESH
COLOUR 01 DARK BLUE
COLOUR 02 MID BLUE
COLOUR 03 LIGHT BLUE
COLOUR 04 WHITE
COLOUR 05 GREEN
COLOUR 06 LIGHT BROWN
COLOUR 07 DARK BROWN



PANEL SIZES



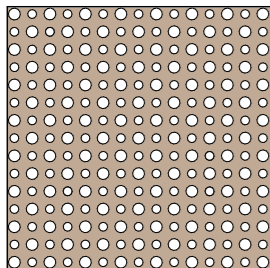
C STAINLESS STEEL HI-TENSILE WIRE MESH



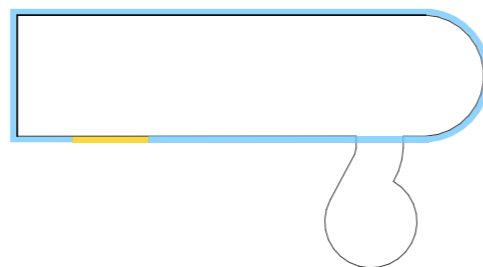
D CRASH BARRIER
TYPE 1 : STANDARD BARRIER
TYPE 2 : HEAVY DUTY BARRIER



E CONCRETE



F PERFORATED METAL PANEL
COLOUR: BROWN



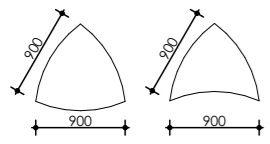
A NEW FAÇADE ARTWORK TO REPLACE THE PREVIOUS FAÇADE DESIGN.
THE ADDITION OF A PERFORATED METAL SAFETY SCREEN TO THE SPIRAL RAMP.
ADJUSTMENTS TO THE HEIGHT OF THE FAÇADE



A STAINLESS STEEL
ANTI-CLIMB METAL MESH



B ALUMINIUM PANELS FIXED TO TENSILE WIRE MESH
COLOUR 01 DARK BLUE
COLOUR 02 MID BLUE
COLOUR 03 LIGHT BLUE
COLOUR 04 WHITE
COLOUR 05 GREEN
COLOUR 06 LIGHT BROWN
COLOUR 07 DARK BROWN



PANEL SIZES



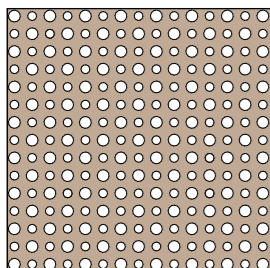
C STAINLESS STEEL HI-TENSILE WIRE MESH



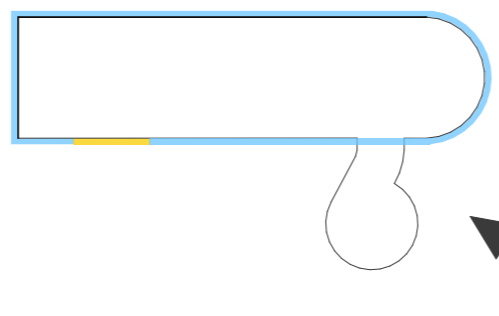
D CRASH BARRIER
TYPE 1 : STANDARD BARRIER
TYPE 2 : HEAVY DUTY BARRIER



E CONCRETE



F PERFORATED METAL PANEL
COLOUR: BROWN



A NEW FAÇADE ARTWORK TO REPLACE THE PREVIOUS FAÇADE DESIGN.
THE ADDITION OF A PERFORATED METAL SAFETY SCREEN TO THE SPIRAL RAMP.
ADJUSTMENTS TO THE HEIGHT OF THE FAÇADE

REV.	DATE	DESCRIPTION
06	24/04/20	FOR REVIEW
07	07/05/20	NOT USED
08	11/08/20	SSDA AMENDMENT
09	01/11/21	SSDA AMENDMENT

CHK	PROJECT
RP	LIVERPOOL HEALTH & ACADEMIC PRECINCT
RP	ELIZABETH STREET LIVERPOOL NSW
RP	CLIENT
RP	HEALTH INFRASTRUCTURE
RP	14/77 PACIFIC HWY, NORTH SYDNEY NSW 2060

PROJECT NORTH	SCALE
25mm ON ORIGINAL	

DRAWING	SCHEDULE OF FINISHES
PRINT DATE	23/11/2021

PROJECT NO.	DRAWING NO.	ISSUE
21807	A-SSDA-MSCP-21	08
STATUS		
SSDA AMENDMENT		



fitzpatrick+partners

© Copyright 2021
 p. +61 (0)2 8274 8200 w. www.fitzpatrickpartners.com
 G. LEVEL 6, 9 CASTLEREAGH ST, SYDNEY 2000, AUSTRALIA

THIS DRAWING IS ISSUED UPON THE CONDITION IT IS NOT COPIED, REPRODUCED, RETAINED OR DISCLOSED TO ANY UNAUTHORISED PERSON EITHER WHOLLY OR IN PART WITHOUT PRIOR CONSENT IN WRITING OF fitzpatrick+partners.
 DO NOT SCALE DRAWINGS. CHECK DIMENSIONS BEFORE COMMENCING WORK.
 DRAWINGS SHOW DESIGN INTENT ONLY. SHOP DRAWINGS ARE TO BE PROVIDED FOR APPROVAL PRIOR TO CONSTRUCTION OR MANUFACTURE. INCONSISTENCIES ARE TO BE REPORTED TO fitzpatrick + partners.

REV.	DATE
06	24/04/20
07	07/05/20
08	11/08/20
09	01/11/21

DESCRIPTION
FOR REVIEW
NOT USED
SSDA AMENDMENT
SSDA AMENDMENT

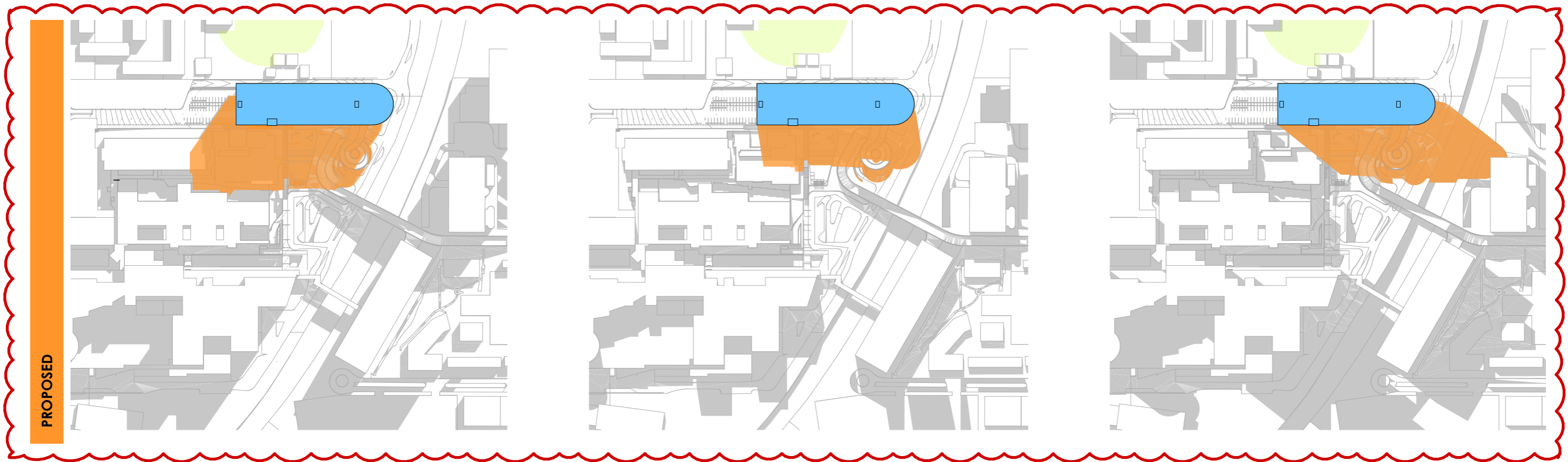
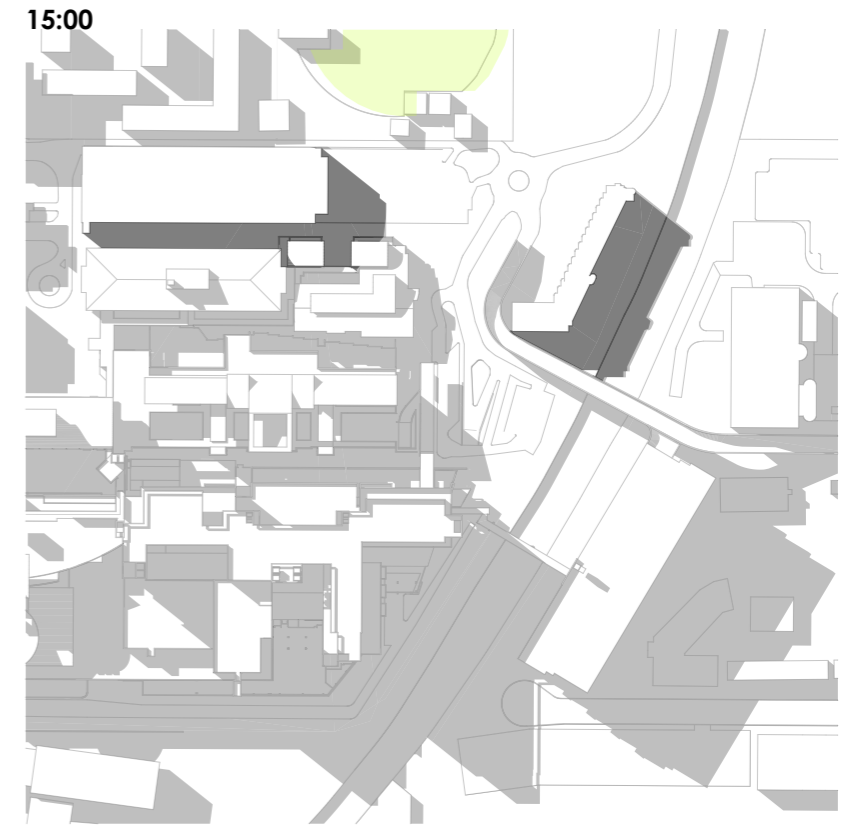
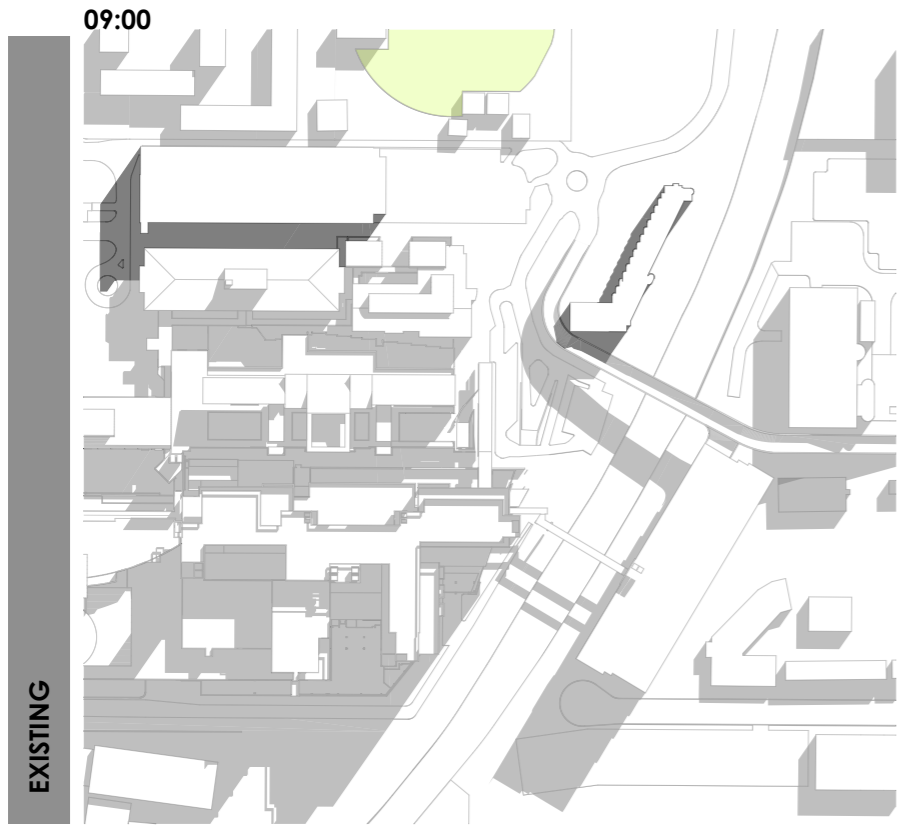
CHK
RP
RP
RP
RP




PROJECT
 LIVERPOOL HEALTH & ACADEMIC PRECINCT
 ELIZABETH STREET LIVERPOOL NSW
 CLIENT
 HEALTH INFRASTRUCTURE
 14/77 PACIFIC HWY, NORTH SYDNEY NSW 2060

PROJECT NORTH SCALE
 25mm ON ORIGINAL

DRAWING
 3D VIEW
 PRINT DATE
 23/11/2021

PROJECT NO.	DRAWING NO.	ISSUE
21807	A-SSDA-MSCP-22	08
STATUS SSDA AMENDMENT		



-  EXISTING SUN SHADOWS
-  PROPOSED SUN SHADOWS
-  PROPOSED CAR PARK MSCP

fitzpatrick+partners

© Copyright 2021
 p. +61 (0)2 8274 8200 w. www.fitzpatrickpartners.com
 G. LEVEL 6, 9 CASTLEREAGH ST, SYDNEY 2000, AUSTRALIA


THIS DRAWING IS ISSUED UPON THE CONDITION IT IS NOT COPIED, REPRODUCED, RETAINED OR DISCLOSED TO ANY UNAUTHORISED PERSON EITHER WHOLLY OR IN PART WITHOUT PRIOR CONSENT IN WRITING OF fitzpatrick+partners.
 DO NOT SCALE DRAWINGS. CHECK DIMENSIONS BEFORE COMMENCING WORK.
 DRAWINGS SHOW DESIGN INTENT ONLY. SHOP DRAWINGS ARE TO BE PROVIDED FOR APPROVAL PRIOR TO CONSTRUCTION OR MANUFACTURE. INCONSISTENCIES ARE TO BE REPORTED TO fitzpatrick + partners.

REV.	DATE
06	24/04/20
07	07/05/20
08	11/08/20
09	01/11/21

DESCRIPTION
FOR REVIEW
NOT USED
SSDA AMENDMENT
SSDA AMENDMENT

CHK
RP
RP
RP
RP

PROJECT
 LIVERPOOL HEALTH & ACADEMIC PRECINCT
 ELIZABETH STREET LIVERPOOL NSW
 CLIENT
 HEALTH INFRASTRUCTURE
 14/77 PACIFIC HWY, NORTH SYDNEY NSW 2060

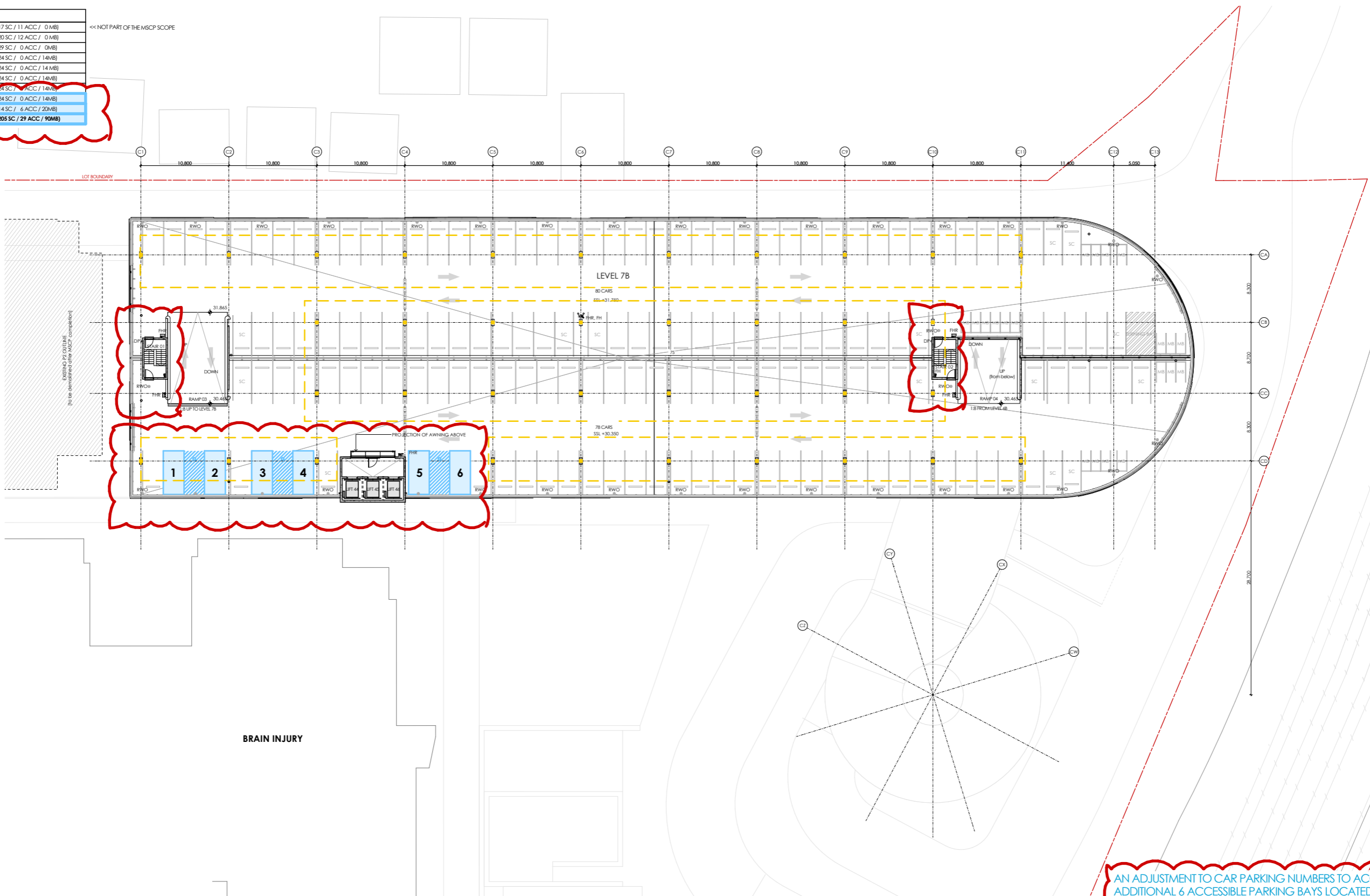
PROJECT NORTH SCALE

 25mm ON ORIGINAL

DRAWING
 SHADOW DIAGRAMS WINTER
 SOLSTICE 21ST JUNE
 PRINT DATE
 23/11/2021

PROJECT NO. 21807	DRAWING NO. A-SSDA-MSCP-24	ISSUE 08
STATUS SSDA AMENDMENT		

CAR PARK NUMBERS	
ON GRADE	66 (17 SC / 11 ACC / 0 MB)
GROUND LEVEL	94 (20 SC / 12 ACC / 0 MB)
LEVEL 1A+1B	144 (29 SC / 0 ACC / 0 MB)
LEVEL 2A+2B	152 (24 SC / 0 ACC / 14 MB)
LEVEL 3A+3B	159 (24 SC / 0 ACC / 14 MB)
LEVEL 4A+4B	158 (24 SC / 0 ACC / 14 MB)
LEVEL 5A+5B	156 (24 SC / 0 ACC / 14 MB)
LEVEL 6A+6B	157 (24 SC / 0 ACC / 14 MB)
LEVEL 7A+7B	152 (14 SC / 6 ACC / 20 MB)
TOTAL	1244 (205 SC / 29 ACC / 90 MB)

<< NOT PART OF THE MSCP SCOPE



EXISTING PC OUTLINE
(to be demolished after MSCP completion)

BRAIN INJURY

- LOCATION OF STRUCTURE FOR NEW SOLAR PANEL ARRAY
- MODIFICATION TO CAR PARK NUMBERS
- SITE BOUNDARY

AN ADJUSTMENT TO CAR PARKING NUMBERS TO ACCOMMODATE AN ADDITIONAL 6 ACCESSIBLE PARKING BAYS LOCATED ON THE ROOF (RESULTING IN A NET LOSS OF 3 SPACES OVERALL).

LOCATION OF STRUCTURE FOR NEW SOLAR PANEL ARRAY

FIRE STAIR (WEST) RELOCATED TO GRID C1/CC ON ALL LEVELS (PREVIOUSLY ADJACENT TO LIFT CORE)

FIRE STAIR (EAST) GRID C10/CC ON ALL LEVELS RECONFIGURED ON ALL LEVELS

fitzpatrick+partners

© Copyright 2021
p. +61 (0)2 8274 8200 w. www.fitzpatrickpartners.com
a. LEVEL 6, 9 CASTLEREAGH ST, SYDNEY 2000, AUSTRALIA

THIS DRAWING IS ISSUED UPON THE CONDITION IT IS NOT COPIED, REPRODUCED, RETAINED OR DISCLOSED TO ANY UNAUTHORISED PERSON EITHER WHOLLY OR IN PART WITHOUT PRIOR CONSENT IN WRITING OF fitzpatrick+partners.
DO NOT SCALE DRAWINGS. CHECK DIMENSIONS BEFORE COMMENCING WORK.
DRAWINGS SHOW DESIGN INTENT ONLY. SHOP DRAWINGS ARE TO BE PROVIDED FOR APPROVAL PRIOR TO CONSTRUCTION OR MANUFACTURE. INCONSISTENCIES ARE TO BE REPORTED TO fitzpatrick + partners.

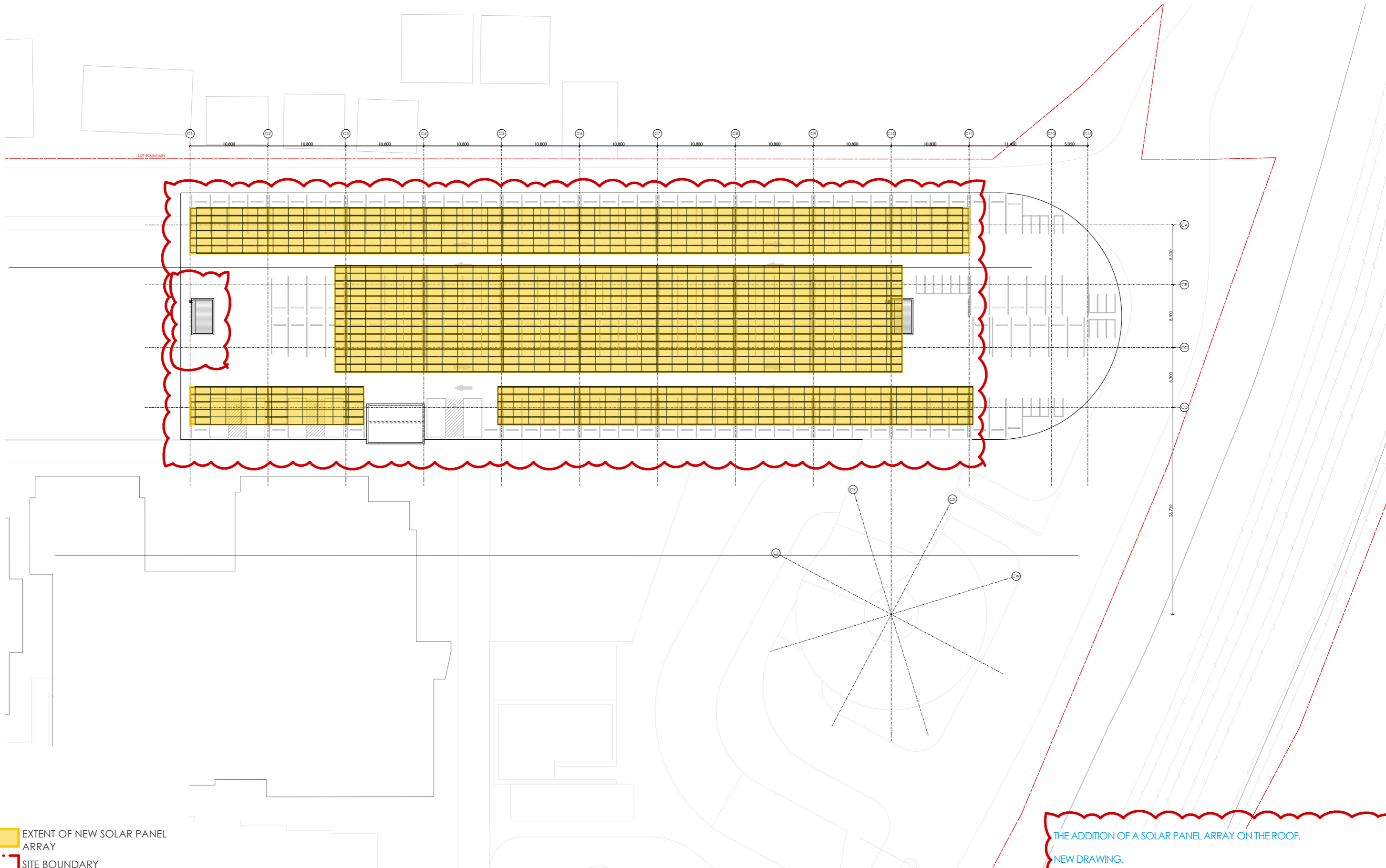
REV.	DATE	DESCRIPTION
06	24/04/20	FOR REVIEW
07	07/05/20	NOT USED
08	11/08/20	SSDA AMENDMENT
09	01/11/21	SSDA AMENDMENT

CHK RP RP RP RP RP
PROJECT LIVERPOOL HEALTH & ACADEMIC PRECINCT
ELIZABETH STREET LIVERPOOL NSW
CLIENT HEALTH INFRASTRUCTURE
14/77 PACIFIC HWY, NORTH SYDNEY NSW 2060

PROJECT NORTH SCALE 1:500 @A3
25mm ON ORIGINAL

DRAWING GA LEVEL 07
PRINT DATE 23/11/2021

PROJECT NO. 21807 DRAWING NO. A-SSDA-MSCP-27 ISSUE 08
STATUS SSDA AMENDMENT



EXTENT OF NEW SOLAR PANEL ARRAY
 SITE BOUNDARY

THE ADDITION OF A SOLAR PANEL ARRAY ON THE ROOF.
 NEW DRAWING.
 FIRE STAIR (EAST) GRID C10/CC ON ALL LEVELS RECONFIGURED ON ALL LEVELS

fitzpatrick+partners

© Copyright 2021
 p. +61 (0)2 8274 8200 w. www.fitzpatrickpartners.com
 a. LEVEL 6, 9 CASTLEREAGH ST, SYDNEY 2000, AUSTRALIA

THIS DRAWING IS ISSUED UPON THE CONDITION IT IS NOT COPIED, REPRODUCED, RETAINED OR DISCLOSED TO ANY UNAUTHORISED PERSON EITHER WHOLLY OR IN PART WITHOUT PRIOR CONSENT IN WRITINGS OF fitzpatrick+partners.
 DO NOT SCALE DRAWINGS. CHECK DIMENSIONS BEFORE COMMENCING WORK.
 DRAWINGS SHOW DESIGN INTENT ONLY. SHOP DRAWINGS ARE TO BE PROVIDED FOR APPROVAL PRIOR TO CONSTRUCTION OR MANUFACTURE. INCONSISTENCIES ARE TO BE REPORTED TO fitzpatrick + partners.

REV.	DATE	DESCRIPTION
06	24/04/20	FOR REVIEW
07	07/05/20	NOT USED
08	11/08/20	SSDA AMENDMENT
09	01/11/21	SSDA AMENDMENT

CHK	PROJECT
RP	LIVERPOOL HEALTH & ACADEMIC PRECINCT
RP	ELIZABETH STREET LIVERPOOL NSW
RP	CLIENT
RP	HEALTH INFRASTRUCTURE
RP	14/77 PACIFIC HWY, NORTH SYDNEY NSW 2060

PROJECT NORTH SCALE
 1:500 @A3
 25mm ON ORIGINAL

DRAWING	PROJECT NO.	DRAWING NO.	ISSUE
GA LEVEL 08 ROOF PLAN	21807	A-SSDA-MSCP-28	08
PRINT DATE	STATUS		
23/11/2021	SSDA AMENDMENT		

PROJECT NO.	DRAWING NO.	ISSUE
21807	A-SSDA-MSCP-28	08
STATUS		
SSDA AMENDMENT		