



SSD-10381

Green Square Integrated Community Facilities & School

ISSUE H OCTOBER 2021

PREPARED FOR

PREPARED BY



Education
School Infrastructure



CONTENTS

EXECUTIVE SUMMARY	3
LANDSCAPE DESIGN STATEMENT	7
PLACE PRINCIPLES	8
LANDSCAPE MASTERPLAN	10
TREE MANAGEMENT PLAN	11
GREEN STAR CALCULATION - ECOLOGICAL VALUE	12
SITE PLAN	13
DETAIL PLAN NORTH	14
DETAIL PLAN	15
SCHEDULE	16
PLANT ZONING	17
PLANTING PALETTE	18
TYPICAL DETAILS	19
TYPICAL DETAILS	20
TYPICAL DETAILS	21
PLANT ZONING	24
PLANT ZONING	25
ROOF LANDSCAPE PLAN	26
DETAIL PLAN NORTH	27
DETAIL PLAN SOUTH	29
SCHEDULE	32
PLANT ZONING	34
PLANTING PALETTE	35
TYPICAL PLANTER ON STRUCTURE DETAILS	36

EXECUTIVE SUMMARY



INTRODUCTION

This landscape design report has been prepared in support of SSD-10381 for the proposed Green Square Integrated Community Facility and School. It has been prepared by Turf Design Studio Pty Ltd with input from relevant other organisations and disciplines. It is to be read in conjunction with the Landscape Drawings, Architectural Drawings and Report, the EIS prepared by Architectus and accompanying other reports. This report forms Appendix L of the EIS.

PROJECT DESCRIPTION

The proposed development is located at 3 Joynton Avenue Zetland. The development is known as the Green Square Integrated Community Facility and School (GSICFS). This is a joint project between School Infrastructure NSW and the City of Sydney.

The development will comprise a four-storey building made up of various indoor and outdoor functional spaces including:

- Primary education facilities for up to 600 kindergarten to year 6 students
 - Indoor and outdoor learning spaces
 - Administration and staff rooms
 - Library and School community hall
- Shared multi-function spaces within for school and community use
 - 2 x multipurpose community facilities rooms to be operated solely by City of Sydney
 - 2 x multipurpose rooms to be shared by the City of Sydney and the primary school
- At ground level there is
 - play spaces which will be a shared use between school and community.
 - multipurpose games court

SEARS ADDRESSED IN THIS REPORT

SECRETARY'S ENVIRONMENTAL ASSESSMENT REQUIREMENTS	ADDRESSED IN REPORT	PAGE NO.
2. Policies		
<ul style="list-style-type: none"> • Sydney Landscape Code Volume 2: All development except for single dwellings <ul style="list-style-type: none"> - Amenity Items - Planting - Soil Depth, Volume and Quality - Development Entries - Materials and Finishes - Maintenance - Irrigation 	<p>The location of the following amenity items can be found in Landscape General Arrangement Plans:</p> <ul style="list-style-type: none"> - The design has promoted the amenity of the development by considering the location of furniture in relation to environmental factors such as sun/shade. Eg. The location of sandstone bleacher seats both underneath tall, shady trees for respite, and in sunlight for warmth during the colder months on groundfloor. Other amenity items that Turf has considered includes: <ul style="list-style-type: none"> > Bike parking - located along cycleways and in close proximity to building entries > Shade structures - providing shade and weather protection > Landscape - providing generous areas of soft landscape - The design has selected plants species suitable to site conditions and scale of the development by: <ul style="list-style-type: none"> > Selecting predominately endemic plants (eastern suburbs banksia scrub/heath) > Planting mixes in lieu of monoculture planting to add further resilience and biodiversity > Selecting hardy, low water use plants to help minimise maintenance and watering > Ensuring sufficient soil depth, width and volume to ensure optimal growth through arborist advice. This has been achieved by setting down the contaminated soil to provide enough room for healthy tree root growth in new soil. Tree root barrier has also been specified to protect roots from external elements. - The design has ensured all podium landscapes will provide soil depths and volumes consistent with minimum requirements of the ADG. This has been achieved by raising planter beds and accumulating soil volume from furniture hollows. Further demonstration that the soil proposed by Turf is fit for purpose includes: <ul style="list-style-type: none"> > Nominating lightweight soil for planting on structure - The design has used landscape to help define and soften all entry points by strategically placing plants to the eastern, southern and western entries. Turf has also considered wayfinding and safety measures by ensuring planting does not interfere with site lines to and from the street. Planting has been implemented for the following development entries: <ul style="list-style-type: none"> > Low planters with small shrubs have been integrated along the eastern entry (Joynton Avenue) to retain sight lines to and from the street. Planting has also been integrated into the public artwork outside the school entry to further enhance visual interest. > A welcoming low planter with small shrubs wraps around the south-west corner to soften the facade on entry. > The climbing species along the western basketball facade that leads to the western entrance acts as a landmark. The vertical green wall will assist in overall site wayfinding and create a sense of identity for the development. - The designs material palette has been selected in relation to the following considerations to meet the requirement of: <ul style="list-style-type: none"> > Use: Materiality for the development connects with the existing public domain palette and local character - concrete unit pavers - consistent with the recently upgraded streetscape. > Colour, texture and finish: Different materials are used to emphasise circulation routes eg. Concrete banding with unit pavers along east-west and north-south pedestrian links. Turf has also used materials to identify a hierarchy of spaces eg. Pigmented concrete and patterns in areas intended to 'stay'. In doing so, Turf has ensured that material selections form a cohesive palette with built elements by incorporating colours from the architect's colour palette into pavement colours. - Turf has well considered an efficient and effective maintenance strategy for the development. Further considerations include: <ul style="list-style-type: none"> > All landscaped spaces and planters within site to be easily and safely accessible > Landscape design incorporating xeriscaping principles eg. selection of low water, robust use plants > All planters on structure are located away from the building edge, not obstructed by elements like fences, and are no higher than 900mm ensuring safe access for maintenance. Refer to Typical Planter on Structure Details for further information. - Irrigation <p>Turf has specified drip irrigation, an appropriate, efficient and low water use irrigation strategy. The drip irrigation will be specified with a smart irrigation system to schedule watering as required. Other methods Turf has considered to ensure an efficient irrigation system include:</p> <ul style="list-style-type: none"> > Providing sufficient drainage from all garden beds and irrigated areas by outlet pipes and drainage gravel, refer to Typical Details Ground Planting > Specifying the use of mulch in garden beds to reduce water evaporation from soil 	<p>10, 14 - 16, 27 - 30</p> <p>37</p> <p>24</p>

4. Built Form and Design		
<ul style="list-style-type: none"> Provide a detailed landscape design, demonstrating consideration of the function, equity, biodiversity and amenity of outdoor play spaces, and integration with built form, security, shade structures, topography, canopy trees and other vegetation. 	<p>The detailed landscape design for Ground Floor and Rooftop (Level 3) demonstrate the following items:</p> <ul style="list-style-type: none"> - Everyday function, day and night: <ul style="list-style-type: none"> > Designated play spaces shared between school and facility will be separated by security gates. The location of these security gates can be found on Landscape General Arrangement Plans, refer to architectural drawings for detailed information and time of use. > The groundfloor courtyard will function as an outdoor play / learning / lunch space during school hours. During community hours, the groundfloor excluding OOSH after school care centre, will be accessible by the community. > The strategic placement of uplighting in landscaping will help deter crime during evening / night time use as per CPTED safety principles. > Levels 1, 2 and 3 (rooftop) function as an outdoor play / learning space and are not accessible by the public. - Equity in the development: <ul style="list-style-type: none"> >The ground level is completely accessible with no major level deviations along the footpath, and grades no steeper than 1:40. For further details on levels and grades please refer to Landscape General Arrangement Plans. > Tactiles have been provided at the bottom and top of stairs as per Australian Standards. Sufficient space for wheelchairs has been allowed for between furniture elements and play equipment. - The generous internal courtyard located adjacent to the Waranara Early Learning Education Centre connects with Green Squares natural and indigenous heritage through endemic specie selection to strengthen local biodiversity and resilience, while ultimately connecting people with place. <ul style="list-style-type: none"> > The landscape design reflects the sites original Botany aquifer character. The ancient sand basin which once featured open heathland vegetation, ridges, lagoons and soaks have been expressed through the planting character, materiality and play space forms. The endemic planting palette comprises predominately of eastern banksia scrub /heath highlighted in Plant Zoning Plans. - The design has promoted outdoor play spaces by considering the location of elements in relation to environmental factors such as sun/shade. Refer to responses provided under the Sydney Landscape Code Volume 2 - Amenity Items. - The landscape design is intergrated with built form through the following points: <ul style="list-style-type: none"> > Colour palette coordination of walls, floor and furniture with the buildings pink shade palette > Use of landscape to soften building entry points > Celebrating the multi-use court with permeable vertical greening around the perimeter edge - Improving security and sense of and safety in design is considered by the following: <ul style="list-style-type: none"> > Security gates at all entrance / exit points, refer to architectural report for more information > Passive surveillance / high visibility from levels 1 - 3 to address CPTED > Low planting at entrance / exit points as to not interfere with sight to and from the street > Uplighting of landscape to improve visibility - COLA areas are located on both groundfloor and rooftop play / learning areas for user respite. <ul style="list-style-type: none"> > The awning in the northern courtyard covers approximately 50% of the play zone, allowing students to sit / play / eat in either shade or sun. > The undercroft of the western courtyard provides full shade to the play zone below for respite > The vergola on the rooftop provides full to partial shade to students below, refer to the Architect's report for more information on shade structures - The relatively flat site of GSICGS has been transformed to represent the sites original Botany aquifer character. This is represented through the mounding on the rooftop highlighting the sand dunes that once sat on this landscape. - GSICFS's landscape design is informed by CSIRO's projected impacts of climate change and City of Sydney's Urban Forest Strategy. This is manifested by the site's increase of tree canopy coverage, refer to Tree Management Plan. Large shady trees have been positioned in locations that maximise shade within the outdoor play spaces, in turn reducing the immediate urban heat island effect. - The design has selected plants species suitable to site conditions and scale of the development by: <ul style="list-style-type: none"> > Selecting predominately endemic plants (eastern suburbs banksia scrub/heath) > Planting mixes in lieu of monoculture planting to add further resilience and biodiversity > Selecting hardy, low water use plants to help minimise maintenance and watering Refer to Plant Zoning Plans for further information on vegetation. 	<p>10, 14 - 16, 27 - 30</p> <p>4</p>

4. Built Form and Design		
<ul style="list-style-type: none"> Demonstrate good environmental amenity including access to natural daylight and ventilation, acoustic separation, access to landscape and outdoor spaces and future flexibility. 	<p>Considerations Turf has made to ensure good environmental amenity include:</p> <ul style="list-style-type: none"> - Access to natural daylight and ventilation All groundfloor and rooftop planting is exposed to sunlight and outdoor air for optimal growth. > The planting in partial shade has been accounted for in species selection. > Level 1 and 2 has indoor planting in partial to full shade, similarly species selection for this environmental factor has been accounted for. - Acoustic separation > Addressed by others - Access to landscape and outdoor spaces All ground floor classrooms open out onto the ground floor plays space which consists of planting, playspaces and tree planting. The connection to landscape continues up the building through internal planting on levels 1, 2 and external greening (including bush tucker gardens) on the rooftop. The planting selection to podium landscaping under vergola structures has been well considered to ensure optimal growth in partial to full shade. Planting mixes in lieu of monoculture planting adds further resilience. Each level is universally accessible via a lift, connecting all greenspaces without compromising design quality. - Future Flexibility The flexible spaces on the groundfloor and rooftop are driven by change dependant on the user. For example the the sandstone amphitheatre on groundfloor south can be used as either a place of respite to eat lunch, a place to learn as an informal outdoor classroom and a place for play. Similarly the furniture upstairs on the rooftop are adaptable to be either respite or learning activities. For further details and location of elements, refer to General Arrangement Plans. 	10, 14 – 16, 27 – 30
9. Ecological Sustainable Development (ESD)		
<ul style="list-style-type: none"> Include preliminary consideration of building performance and mitigation of climate change, including consideration of Green Star Performance. Provide a statement regarding how the design of the future development is responsive to the CSIRO projected impacts of climate change, specifically: <ul style="list-style-type: none"> - How these will inform landscape design, material selection and social equity aspects (respite/shelter areas). 	<p>With Australia’s climate warming on average by 1.44 ± 0.24 °C (CSIRO, 2020), the percentage increase of tree canopy cover alongside increased respite/shelter areas is crucial for the health and wellbeing of GSICF’s users. Refer to for Green Star Calculations – Ecological Value for more information on tree canopy cover for this development.</p> <p>GSICFS’s landscape design is informed by CSIRO’s projected impacts of climate change and City of Sydney’s Urban Forest Strategy. This is manifested by the site’s increase of tree canopy coverage, refer to Tree Management Plan. Large shady trees have been positioned in locations that maximise shade within the outdoor play spaces, in turn reducing the immediate urban heat island effect.</p> <p>In addition, consideration has been given to the incorporation of low water demand plants species with hotter days and extended drought periods that Australia is projected to see. The landscaping design has adopted xeriscaping principles through the selection of low water use plants, predominately the eastern suburbs banksia scrub/heath.</p> <p>CSIRO has influenced the material selection for the development, for example for timber elements (playpod and furniture) Accoya (Radiata Pine) has replaced standard hardwood for its maintenance and sustainability benefits.</p>	12 11
Plans and Documents		
<p>Landscape architectural drawings showing key dimensions, RLs, TOW levels, scale bar and north point, including:</p> <ul style="list-style-type: none"> Integrated landscape plans at appropriate scale, with detail of new and retained planting, shade structures, tree canopy cover materials and finishes proposed including articulation of playground spaces Plan identifying significant trees, trees to be removed and trees to be retained or transplanted Details of any planting on structure, confirming sufficient soil volume, drainage, irrigation and easy access for maintenance 	<p>Refer to all Landscape General Arrangement Plans. Refer to the architectural package for shade structure details.</p> <p>Refer to Tree Management Plan</p> <p>Turf has ensured all podium landscapes will provide soil depths and volumes consistent with minimum requirements of the ADG. This has been achieved by raising planter beds. Drip irrigation will be specified with a smart Irrigation system to schedule watering as required. Turf has also considered an efficient and effective maintenance strategy for the development where all landscaped spaces and planters within site are easily and safely accessible.</p> <p>Refer to:</p> <ul style="list-style-type: none"> - Sydney Landscape Code Volume 2 - Soil Depth, Volume and Quality for confirmation of sufficient soil amounts - For further information on Turf’s drainage and irrigation strategy refer to Landscape Design Statement (Drainage & Irrigation) - For detail drawings see, Typical Planter on Structure Details 	10, 14 – 16, 27 – 30 11 4 7 37
<ul style="list-style-type: none"> Schedule of materials and finishes. 	Refer to Schedule Ground & Schedule Rooftop for material palette	17, 33, 34
ARCHITECTUS COMMENTS		
<ul style="list-style-type: none"> There is a Green Square Community and Cultural Precinct Public Domain Coordination Plan. How does the proposed landscape scheme respond to this Plan? Also, as a result of the proposal, there will be impacts to the public domain (i.e. including loss of wayfinding, bicycle racks, play courts and street lighting etc) due to proposal. How are we responding to this matter? 	<p>The Landscape design responds to the Public Domain Coordination Plan’s vision by enhancing “green” in our site. Statistics of increased canopy coverage, outdoor nature play can be found on pp. 11-12.</p> <p>The following responds to the proposals impact on the public domain:</p> <ul style="list-style-type: none"> - Wayfinding: The landscape design purposely ensures a strong north-south and east-west connection to and from the surrounding streetscape for clear legibility and safety. The material of the groundfloor ties in with the surrounding streetscape pavement (concrete unit paver) as per GSTC Public Domain Strategy. - Bicycle Racks: The amount of bike racks provided in our site is compliant with Traffic advice. Bike rack locations and amounts can be seen on pp. 15 – 17. - Play courts: A multi-purpose games court stands in replacement of the southern halfcourt. This facility will be shared among the school and community. - Street Lighting: Lighting outside of the site boundary does not fall in Turf’s scope. The strategic placement of uplighting in landscaping will help deter crime during evening / night time use as per CPTED safety principles. 	11 – 12 13 – 15
TURF’S RESPONSE		
PAGE NO.		

LANDSCAPE DESIGN STATEMENT



DESIGN STATEMENT

Green Square Integrated Community Facility and School (GSICFS) is expected to become a vibrant, welcoming place to learn for both the attending children and the surrounding and broader community after hours. GSICFS has the opportunity to enhance the local community connecting with its surrounding community assets of the Dry Green Park, Aquatic Centre and Green Square Library along Zetland Avenue.

The landscape design reflects the sites original Botany aquifer character. The ancient sand basin which once featured open heathland vegetation, ridges, lagoons and soaks have been expressed through the planting character, materiality and play space forms.

PLANTING

The generous internal courtyard located adjacent to the Waranara Early Learning Education Centre connects with Green Squares natural and indigenous heritage through endemic specie selection to strengthen local biodiversity and resilience, while ultimately connecting people with place.

Landscape helps soften the eastern, southern and western entries. The climbing species along the western basketball facade has been selected to provide a well balanced foliage coverage that provides the appropriate amount of screening and porosity for both views and natural light. Growth will be controlled by available soil volume in planters and is expected to lessen in vigour as they extend across a mesh canopy.

The communal hall and canteen opens onto a generous green courtyard that spans across the north-south and east-west throughfare link. This green carpet provides flexible and shady outdoor spaces for learning and play and can be seen from all the levels above.

The connection to landscape continues up the building through internal planting on levels 1, 2 and external greening (including bush tucker gardens) on the rooftop. All podium landscapes will provide soil depths and volumes consistent with minimum requirements of the AGD.

The planting selection to podium landscaping under vergola structures has been well considered to ensure optimal growth in partial to full shade. Planting mixes in lieu of monoculture planting adds further resilience. Each level is universally accessible via a lift, connecting all greenspaces without compromising design quality.

MATERIALITY

Proposed materiality for the project connects with the existing public domain palette and local character; concrete unit pavers – consistent with the recently upgraded streetscape. The application of this material combined with concrete banding is proposed in a way that creates a unique sense of place for the site whilst complementing the surrounding urban context and contributing to the sense of public domain continuity (welcoming the integrated community after hours).

DRAINAGE & IRRIGATION

Drainage design will be consistent with overall stormwater requirements, paving will be drained into garden beds wherever possible to allow infiltration of rain water to the water table and reducing stormwater runoff.

Drainage cells will be added to all soft landscape zones on structure. Irrigation will be provided to all soft landscape areas, utilising a rainwater tank sized appropriately to the water volumes required. Consideration has been given to the incorporation of low water demand and low maintenance plant species in all areas to reduce mains consumption and fertiliser contamination of drainage water. Drip irrigation will be specified with a smart Irrigation system to schedule watering as required.

SOIL

The planting will comprise a complementary mix of endemic and indigenous species. Soil requirements will therefore vary according to soil chemistries enjoyed by individual species. Suggested material would equal Australian Native Landscapes 'Low P' mixture. Consideration will be given to the planting arrangement to ensure species sensitive to nutrients will be grouped together.

PLANT ESTABLISHMENT & MAINTENANCE

A landscape maintenance contractor must provide the Superintendent with a proposed maintenance works program for approval. The landscape contractor must keep a logbook of all maintenance works undertaken and include 'works to date' information. All landscaped spaces and planters within the site are easily & safely accessible. Works will include, but not be limited to:

- Monitoring the irrigation system on a weekly basis to ensure plants are not under or over irrigated,
- Replacing dead plant material to establish a complete cover of planting without obvious voids at final completion.
- Replenishment of mulch as required to provide cover to the soil surface minimising weed encroachment.
- Suppression of weed growth.
- Selective pruning / crown lifting / canopy shaping of trees to remove potential future structural defects, establish branching above head height

CLIMATE CHANGE RESPONSE

GSICFS's landscape design is informed by CSIRO's projected impacts of climate change and City of Sydney's Urban Forest Strategy. This is manifested by the site's increase of tree canopy coverage (refer to pg. 8). Large shady trees have been positioned in locations that maximise shade within the outdoor play spaces, in turn reducing the immediate urban heat island effect. With Australia's climate warming on average by 1.44 ± 0.24 °C (CSIRO, 2020), the percentage increase of tree canopy cover alongside increased respite/shelter areas is crucial for the health and wellbeing of GSICF's users.

In addition, consideration has been given to the incorporation of low water demand plants species with hotter days and extended drought periods that Australia is projected to see. The landscaping design has adopted xeriscaping principles through the selection of low water use plants, predominately the eastern suburbs banksia scrub/heath.

PLACE PRINCIPLES LANDSCAPE



BIOPHILIA



Engaging with biophilic principles to promote health & wellbeing.



Forming reconfigurable, integrated & versatile modular spaces.



Activating the ground plane & podium levels with passive & active play.

PLACE PRINCIPLES LANDSCAPE



CULTURE



Promoting cultural learning through indigenous landscape experiences.



INCLUSIVITY



Creating a connected, inclusive environment for all.



OUTDOOR LEARNING



Maximising outdoor learning spaces.

LANDSCAPE MASTERPLAN



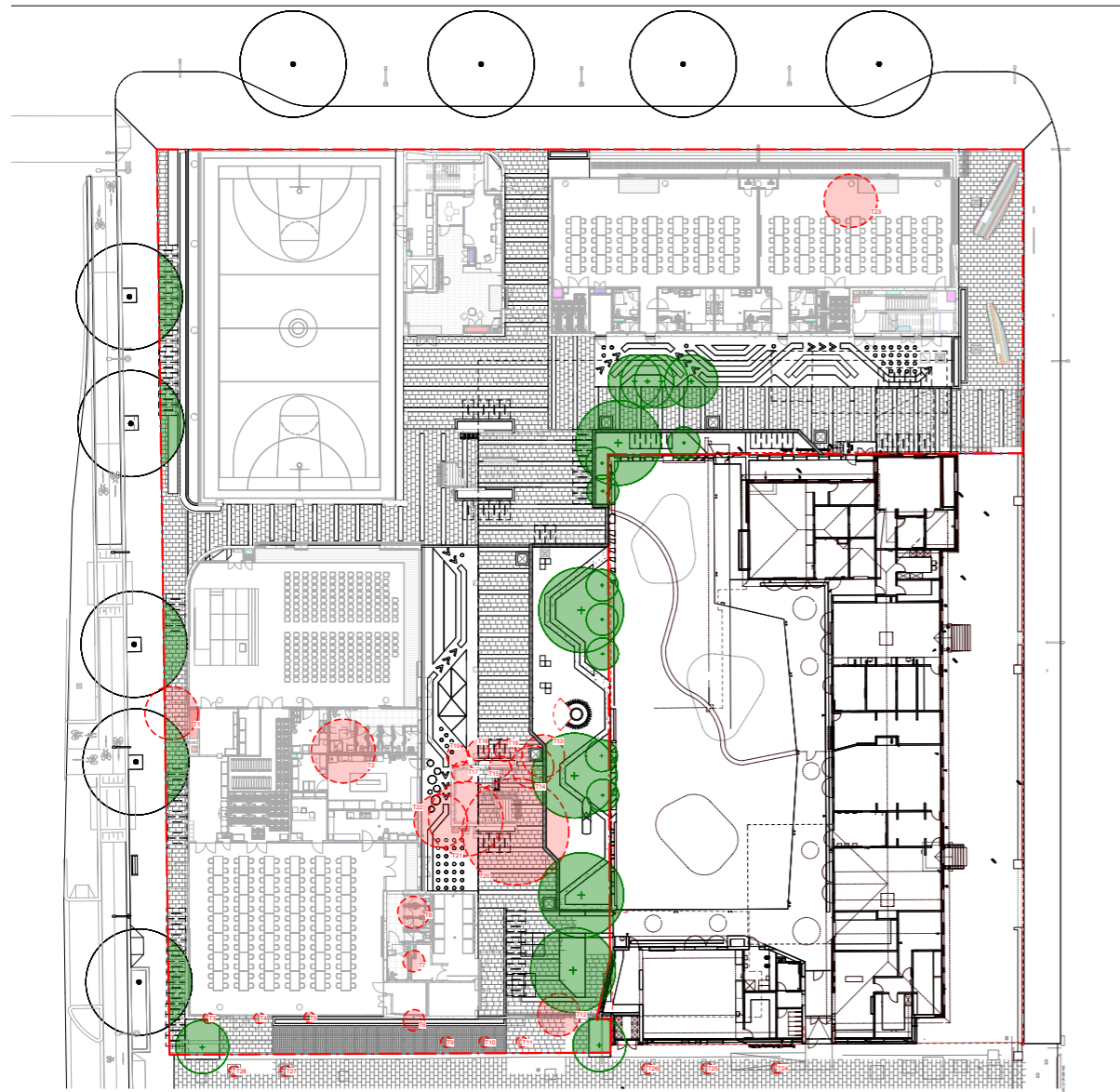
NOTE:

- TOTAL BIKE RACKS: 90 (180 SPACES)
- BIKE RACKS INSIDE SECURITY GATE: 49
- BIKE RACKS OUTSIDE SECURITY GATE: 41



- LEGEND**
- | | |
|-----------------------------------|--------------------------------|
| 1. Internal courtyard | 3. Amphitheatre teaching space |
| 2. Rooftop library learning space | 4. Rooftop mound play space |
| 5. Vergola shade structure | |

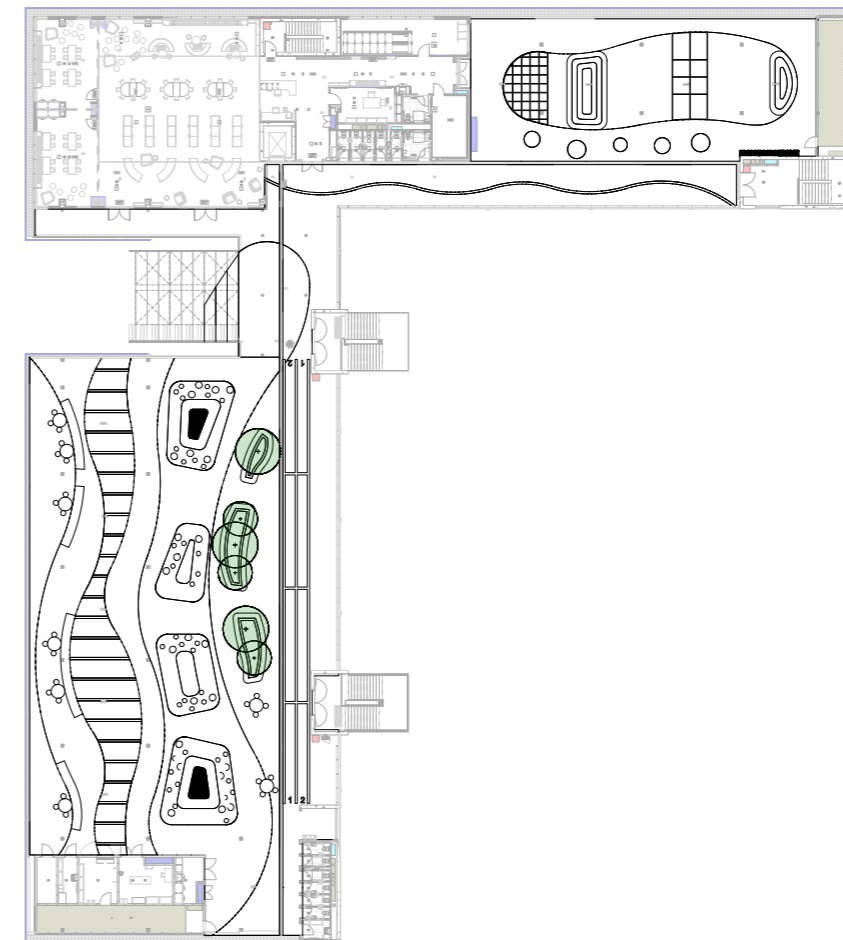
TREE MANAGEMENT PLAN



- TREE MANAGEMENT STATISTICS**
- NUMBER OF TREES REMOVED: 28
 - NUMBER OF NEW TREES: 19
 - STREET TREES BY OTHERS: 1
 - PROPOSED TREE CANOPY COVER (SITE AREA: 4700m²): 403m² / 8.6%
 - TO BE REMOVED TREE CANOPY COVER: 234m² / 5%

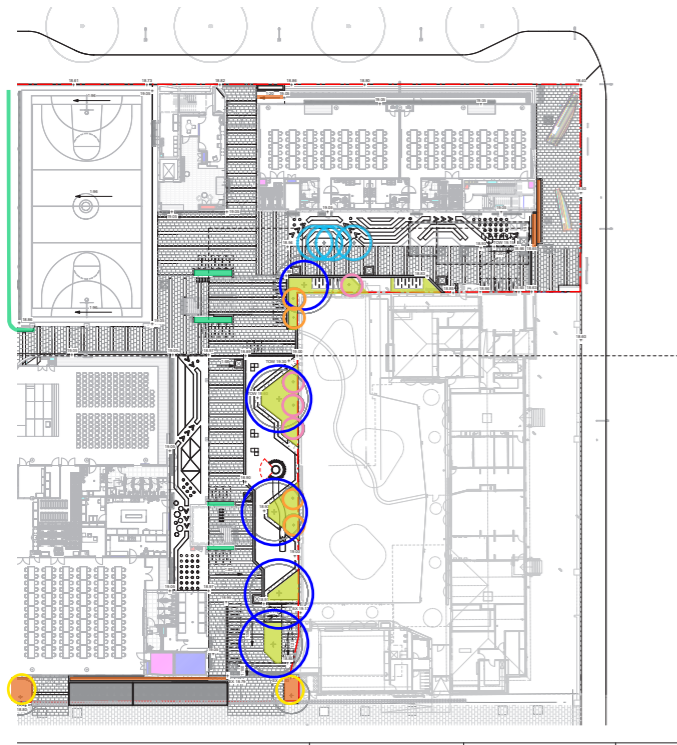
TREE ID	TREE SPECIES	LANDSCAPE SIGNIFICANCE
1	Celtis sinensis	Low
2	Celtis sinensis	Low
3	Zelkova serrata	Low
4	Zelkova serrata	Low
5	Zelkova serrata	Low
6	Melaleuca quinquenervia	Medium
7	Melaleuca quinquenervia	Medium
8	Melaleuca quinquenervia	Medium
9	Zelkova serrata	Low
10	Zelkova serrata	Low
11	Zelkova serrata	Low
12	Jacaranda mimosifolia	Medium
13	Murraya paniculata	Medium
14	Murraya paniculata	Medium
15	Hovea forsteriana	Medium
16	Hovea forsteriana	Medium
17	Hovea forsteriana	Medium
18	Hovea forsteriana	Medium
19	Hovea forsteriana	Medium
20	Celtis sinensis	Low
21	Celtis sinensis	Low
22	Celtis sinensis	Low
23	Melia azadirach	Medium
24	Zelkova serrata	Low
25	Zelkova serrata	Low
26	Zelkova serrata	Low
27	Zelkova serrata	Low
28	Zelkova serrata	Low

NOTE: TREE NUMBERS AND PROPOSED MANAGEMENT IN ACCORDANCE WITH ANALYSIS REPORT. REFER TO ARBORIST REPORT FOR FURTHER INFORMATION.



- TREE MANAGEMENT STATISTICS**
- NUMBER OF NEW TREES: 6
 - PROPOSED TREE CANOPY COVER (SITE AREA: 4700m²): 55m² / 1.2%

GREEN STAR CALCULATION - ECOLOGICAL VALUE



GROUND LEVEL

Native Planting Area:

Mix 1: 103m²

Mix 3: 65m²

Mix 7: 20m²

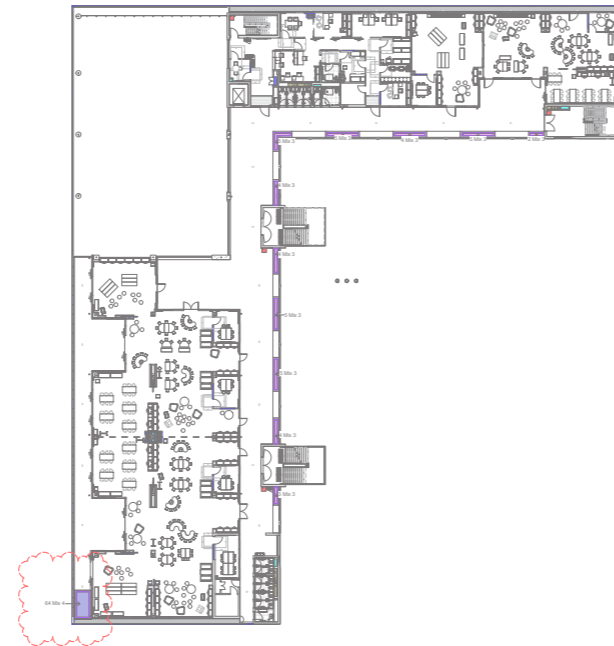
Total: 188m²

Native Greenwall Area (100% Coverage):

Basketball Greenwall: 140m²

Stairwell Greenwall: 93.3m²

Total: 233.3m²



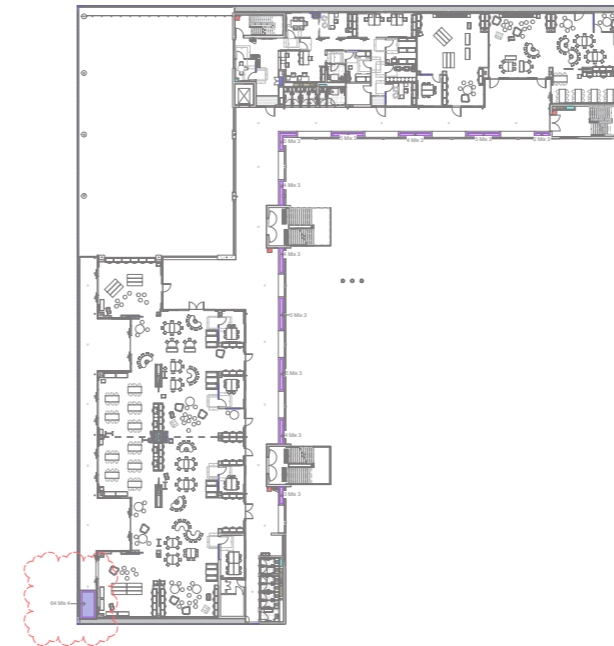
LEVEL 1

Native Planting Area:

Mix 4: 12.5m²

Mix 3: 6m²

Total: 18.5m²



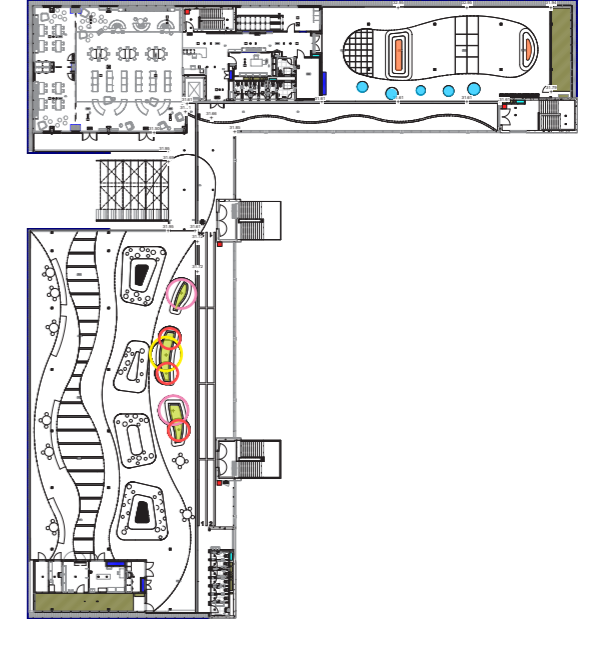
LEVEL 2

Native Planting Area:

Mix 4: 12.5m²

Mix 3: 6m²

Total: 18.5m²



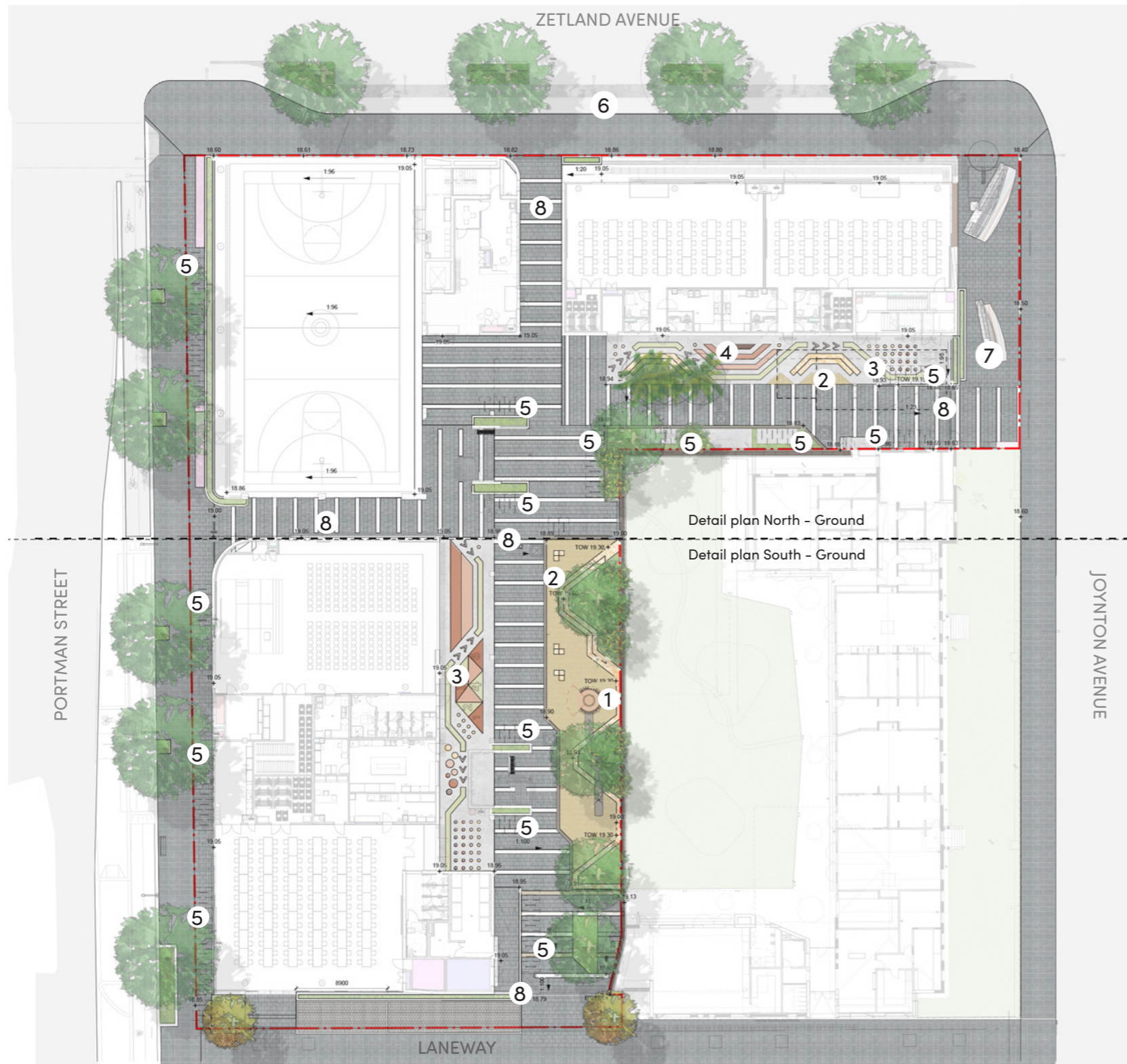
LEVEL 3

Native Planting Area: 28.2m²

Ecological Value

DESCRIPTION	M2 / %
Total site area	4700 / 100%
Native planting area	253.2 / 5.4%
Groundfloor	188
Level 1	18.5
Level 2	18.5
Rooftop	28.2
Greenwall Native planting area	233.3 / 4.9%
Basketball perimeter planting	140
Stairwell planting	93.3
TOTAL NATIVE PLANTING AREA	486.5 / 10.6%

SITE PLAN GROUND



NOTE:

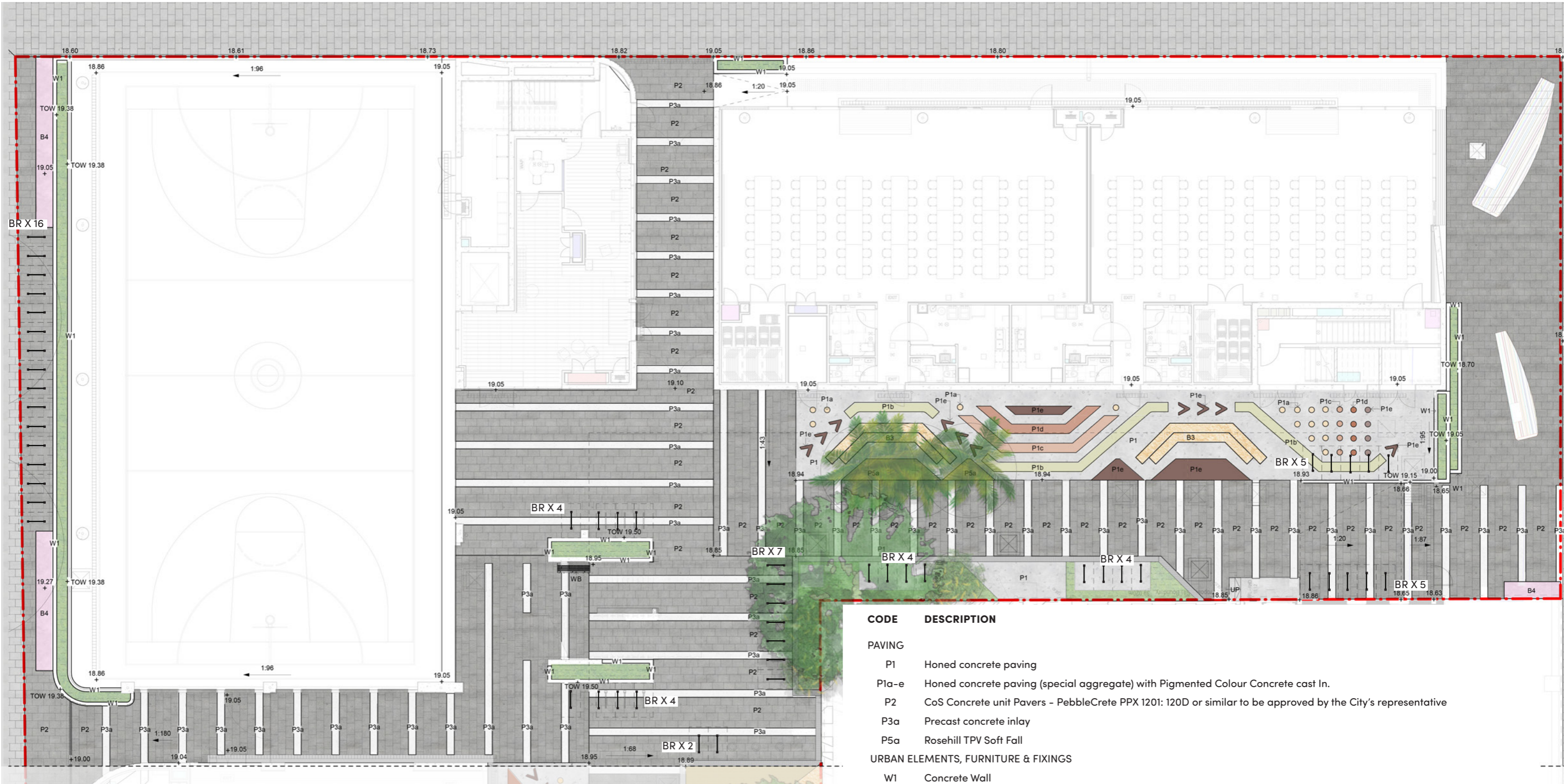
- TOTAL BIKE RACKS: 90 (180 SPACES)
- BIKE RACKS INSIDE SECURITY GATE: 49
- BIKE RACKS OUTSIDE SECURITY GATE: 41



LEGEND

- - Site boundary
- 1. Playpod
- 2. Outdoor learning
- 3. Play line markings
- 4. Outdoor breakout space
- 5. Bike parking
- 6. Kiss and ride
- 7. Public art by others
- 8. Security gate (refer to architect's drawings for further details)

DETAIL PLAN NORTH GROUND



CODE	DESCRIPTION
PAVING	
P1	Honed concrete paving
P1a-e	Honed concrete paving (special aggregate) with Pigmented Colour Concrete cast In.
P2	CoS Concrete unit Pavers - PebbleCrete PPX 1201: 120D or similar to be approved by the City's representative
P3a	Precast concrete inlay
P5a	Rosehill TPV Soft Fall
URBAN ELEMENTS, FURNITURE & FIXINGS	
W1	Concrete Wall
B3	Sandstone bleachers small
B4	Concrete bleacher seating- Colour to match architects wall
BR	Semi Hoop Bike Racks - Subsurface Fixed
WB	Water basin



LEGEND

--- Site boundary

Refer to ground level schedule for further details

DETAIL PLAN SOUTH GROUND

NOTE:
REFER TO SCHEDULE FOR DETAILS

LEGEND

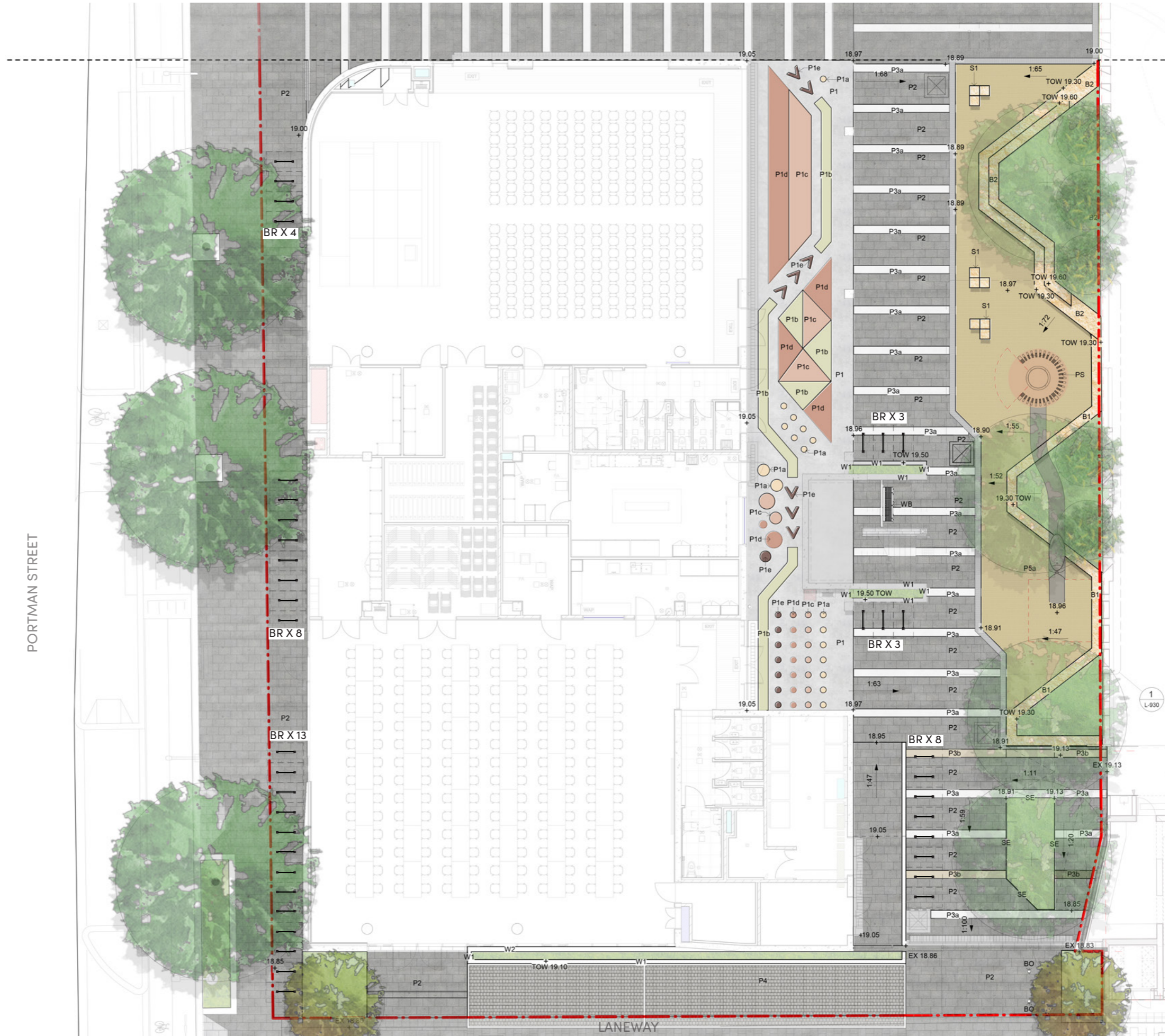
— Site boundary

Refer to ground level schedule for further details

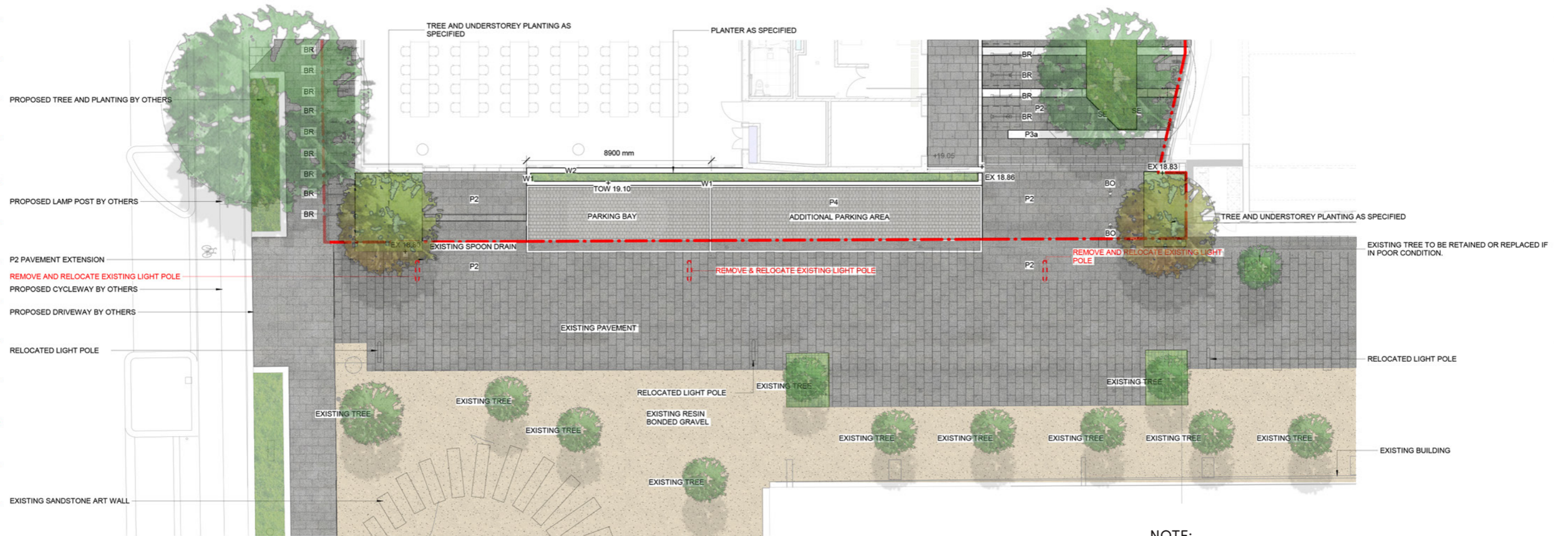
CODE	DESCRIPTION
PAVING	
P1a-e	Honed concrete paving (special aggregate) with Pigmented Colour Concrete cast in.
P2	CoS Concrete unit Pavers - PebbleCrete PPX 1201: 120D or similar to be approved by the City's representative
P3a	Precast concrete inlay
P3b	White concrete unit paver to match existing interpretative banding
P4	CoS Square stone setts L 150 x W 150 x D 60
P5a	Rosehill TPV Soft Fall
WALL, URBAN ELEMENTS, FURNITURE & FIXINGS	
W1 & 2	Concrete Wall
S1	Stacked Sandstone seating Blocks
B1	Sandstone seating wall
B2	Sandstone bleacher seating
PS	Timber Play Pod with stainless Steel Slide
BR	Semi Hoop Bike Racks - Subsurface Fixed
BO	Stainless steel bollard
WB	Water Basin
SE	Flush Steel Edge



PORTMAN STREET



DETAIL PLAN SOUTH GROUND



NOTE:
REFER TO SCHEDULE FOR DETAILS

LEGEND

--- Site boundary

Refer to ground level schedule for further details

CODE DESCRIPTION

PAVING

- P2 CoS Concrete unit Pavers - PebbleCrete PPX 1201: 120D or similar to be approved by the City's representative
- P3a Precast concrete inlay
- P3b White concrete unit paver to match existing interpretative banding
- P4 CoS Square stone setts L 150 x W 150 x D 60

URBAN ELEMENTS, FURNITURE & FIXINGS

- W1&W2 Concrete Wall
- BR Semi Hoop Bike Racks - Subsurface Fixed
- BO Stainless steel bollard
- SE Flush Steel Edge



SCHEDULE GROUND

CODE	ITEM/PRODUCT	DIMENSION	COLOUR + FINISH	SUPPLIER	SHOP DRAWINGS	SAMPLES	NOTES
PAVING							
P1a-e	Honed concrete paving (special aggregate) with Pigmented Colour Concrete cast In.	120mm Thick	Main Colour :White Cement Cast in Pigmented concrete: SUEDE, Evergrade, Pumpkin, Terracotta, Red Rock	-	Required	Required	Inspection points: (1)Approval of sample Colours, (2) at completion of formwork for each shape, for approval by client representative prior to pouring concrete. Contractor must provide minimum 1 week notice. Approval of sample Honing section required prior to commencement of honing.
P2	CoS Concrete unit Pavers - PebbleCrete PPX 1201: 120D or similar to be approved by the City's representative	600x400x50mm	Surface finish: Honed - 150 Chamfer: The paver shall have square edges with no chamfers, unless otherwise specified in the approved construction documents.	PebbleCrete	-	Required	Inspection of completed sample area of pattern setout prior to grouting
P4	CoS Square Stone Setts	150x150x60mm	Refer to CoS Specification	-	-	Required	trafficable surface finishes to comply with Australian slip resistance standard
P3a	Precast concrete inlay	180mm Thick	White Oxide	2 Barrows	Required	Required	Inspection points: (1)Approval of sample Colours, (2) at completion of formwork for each shape, for approval by client representative prior to pouring concrete. Contractor must provide minimum 1 week notice. Approval of sample Honing section required prior to commencement of honing.
P3b	White concrete unit paver to match existing interpretative banding	50mm Thick	To match existing interpretative banding	-	-	Required	Inspection of completed sample area of pattern setout prior to grouting
P5a-b	Rosehill TPV Soft Fall	Thickness to manufacturers specification to conform with required FHOFS	P5a Colour mix of: RH30 Beige - 55% RH31 Cream - 15% RH32 Brown - 30% P5b Colour mix of: RH30 Beige - 13% RH31 Cream - 15% RH32 Brown - 55%	Surface designs	-	Required	Quality Systems: AS/NZS4422:2016 Amdt.1 Softfall thickness to manufacturer's specification for the equipment provided.
URBAN ELEMENTS, FURNITURE & FIXINGS							
W1	Concrete Wall	H varies x W 200mm	Colour: To match hob wall, refer arc. Finish: To match hob wall, refer arc.	-	-	Required	
W2	Concrete Wall	H varies x W 200mm	Colour: To match hob wall, refer arc. Finish: To match hob wall, refer arc.	-	-	Required	
SE	Flush Steel Edge	6mm thick x 100mm(H)	Finish: Hot dipped galvanised	-	-	Required	
S1	Stacked Sandstone seating Blocks	4x 500x500x300mm	Stone Type: Mount White Sandstone Colour: Sanstone- Brown range Finish: Sawn Cut all sides	Gosford Quarries	Required	Required	
S2	Sandstone seating Blocks	500x500x350mm	Stone Type: Mount White Sandstone Colour: Sanstone- Brown range Finish: Sawn Cut all sides	Gosford Quarries	Required	Required	
B1	Sandstone Bleacher seating Large	500x500x300mm	Stone Type: Mount White Sandstone Colour: Sanstone- Brown range Finish: Sawn Cut all sides	Gosford Quarries	Required	Required	
B2	Sandstone Bleacher seating small	500x500x200mm	Stone Type: Mount White Sandstone Colour: Sandstone- Brown range Finish: Sawn Cut all sides	Gosford Quarries	Required	Required	
B3	Concrete Bleacher seating	900x500x450mm	Colour: To match hob wall, refer arc. Finish: To match hob wall, refer arc.	-	-	Required	
B4	Concrete Bleacher seating	900(W)x450(H)xVaries	Class 2 Off form concrete wall. Colour: refer to Architecture colours	-	Required	Required	
PS	Timber Play Pod with stainless Steel Slide	Refer to detail	Timber: Australian hardwood. DAR pencil round.	Structure & Slide: Studio 2 Rope Elements: Kaebel Leisure	Required	Required	
BR	Semi Hoop Bike Racks - Subsurface Fixed	-	Stainless steel	Street Furniture Australia	-	Required	
BO	Stainless Steel Bollard	880mm (h) x 165mm dia	"Brushed Stainless Steel- Flat Top"	Street Furniture Australia	-	Required	Removable surface fixed model. Install to manufacturers recommendation.
WB	Wash Basin - Aquofill Hydrobank	1724x501x956mm	Stainless Steel, End Panel Light grey	CIVIQ	-	Required	Approval of sample required prior to installation.
	Irrigation	All planting areas to have drip irrigation will be specified with a smart Irrigation					

PLANT ZONING GROUND



Author _____ Client _____ Drawing Title _____



TREES



Livistona australis

Corymbia gummifera



Banksia ericifolia

Banksia serrata

Zelkova serrata

UNDERSTOREY



Hibbertia scandens

Philodendron xanadu



Grevillea buxifolia

Grevillea speciose

Xanthorrhoea australis

Lomandra longifolia

Ficinia nodosa



Dianella caerulea

Westringia fruticosa

Eriostemon australasius

Goodenia ovata

Telopea speciosissima

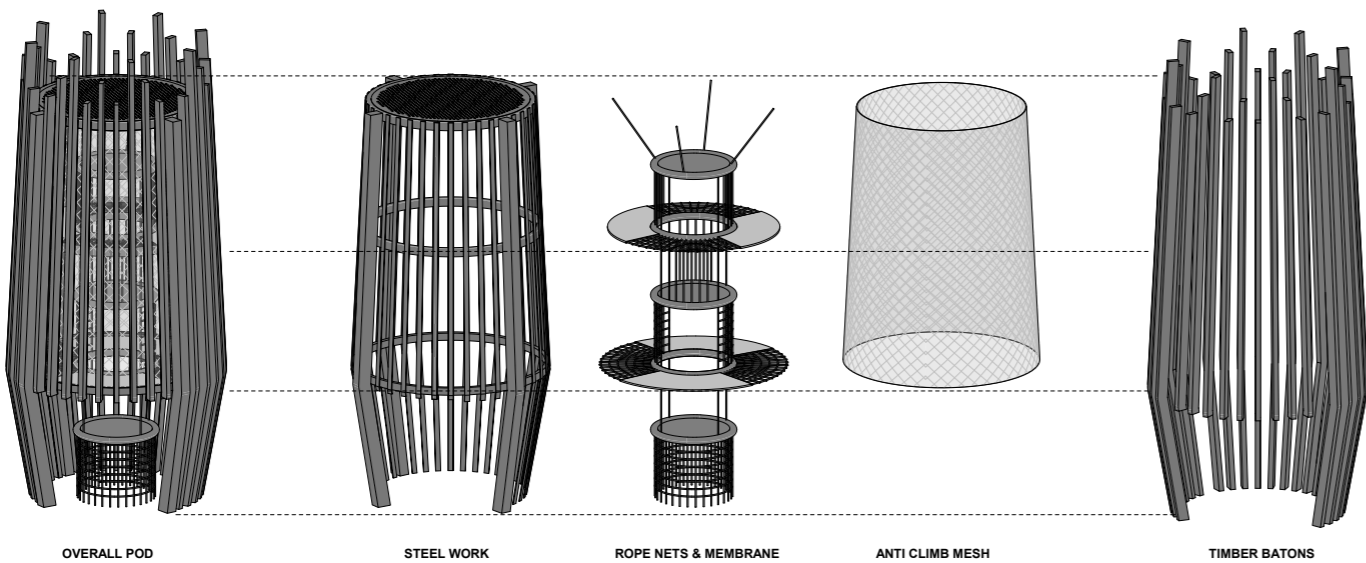
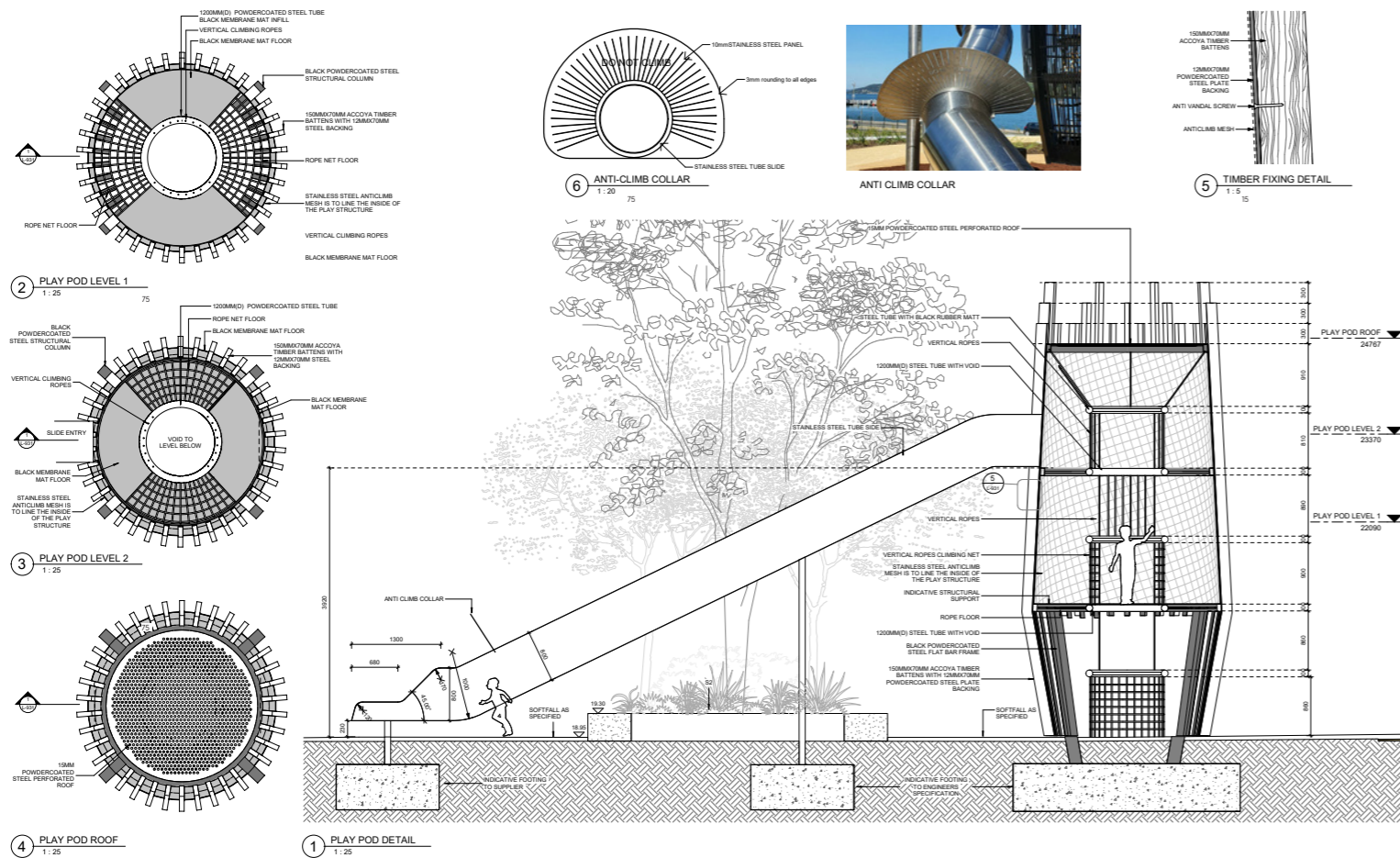
PLANTING PALETTE

GROUND



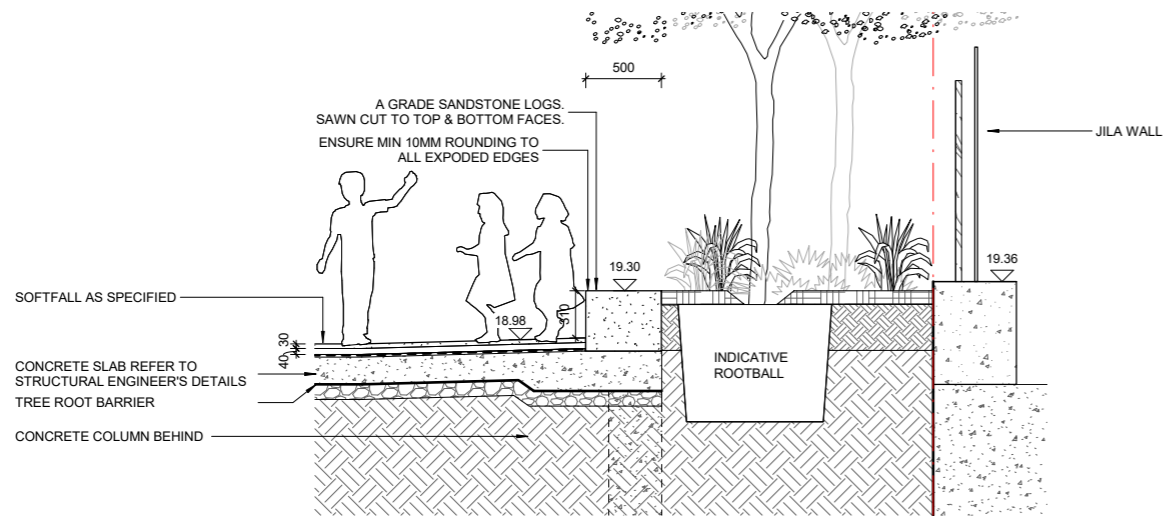
CODE	BOTANICAL NAME	COMMON NAME	MATURE HEIGHT	MATURE SPREAD	POT SIZE	DENSITY	QUANTITY
GROUND LEVEL							
TREES							
	<i>Livistona australis</i>	Cabbage Tree Palm	16m	2m	5-9m	As Shown	8
	<i>Eucalyptus tereticornis</i>	Forest Red Gum	20m	7m	400L	As Shown	5
	<i>Banksia ericifolia</i>	Heath-leaved Banksia	5m	4m	100L	As Shown	5
	<i>Callistemon citrinus</i>	Crimson Bottlebrush	3m	3m	100L	As Shown	12
	<i>Banksia serrata</i>	Old Man Banksia	8m	4m	100L	As Shown	11
	<i>Acacia implexa</i>	Hickory Wattle	6m	5m	100L	As Shown	5
	<i>Acacia floribunda</i>	Gossamer Wattle	5m	3m	100L	As Shown	2
UNDERSTOREY							
SHRUBS							
	<i>Philodendron xanadu</i>	Xanadu	1m	1.5m	400mL	300mm	143
	<i>Grevillea buxifolia</i>	Red Spider Flower	1.5m	3m	400mL	300mm	143
	<i>Grevillea speciose</i>	Red Spider Flower	2m	3m	400mL	300mm	143
	<i>Xanthorrhoea australis</i>	Grass Tree	3m	1m	400L	300mm	143
	<i>Lomandra longifolia</i>	Basket Grass	1m	1.2m	150mL	300mm	143
	<i>Ficinia nodosa</i>	Knobby Club Rush	1.5m	0.6m	150mL	300mm	143
	<i>Dianella caerulea</i>	Blue Flax-lily	1m	1m	150mL	300mm	143
	<i>Westringia fruticosa</i>	Coastal Rosemary	1.5m	3m	400mL	300mm	143
	<i>Eriostemon australasius</i>	Pink Wax Flower	1m	1m	400mL	300mm	143
	<i>Telopea speciosissima</i>	Waratah	3m	1m	50L	300mm	143
GROUND COVER							
	<i>Goodenia ovata</i>	Hop Goodenia	1.5m	1.5m	400mL	300mm	143
CLIMBERS							
	<i>Hibbertia scandens</i>	The Snake Vine	-	-	200mL	600mm	172

TYPICAL DETAILS PLAY STRUCTURE

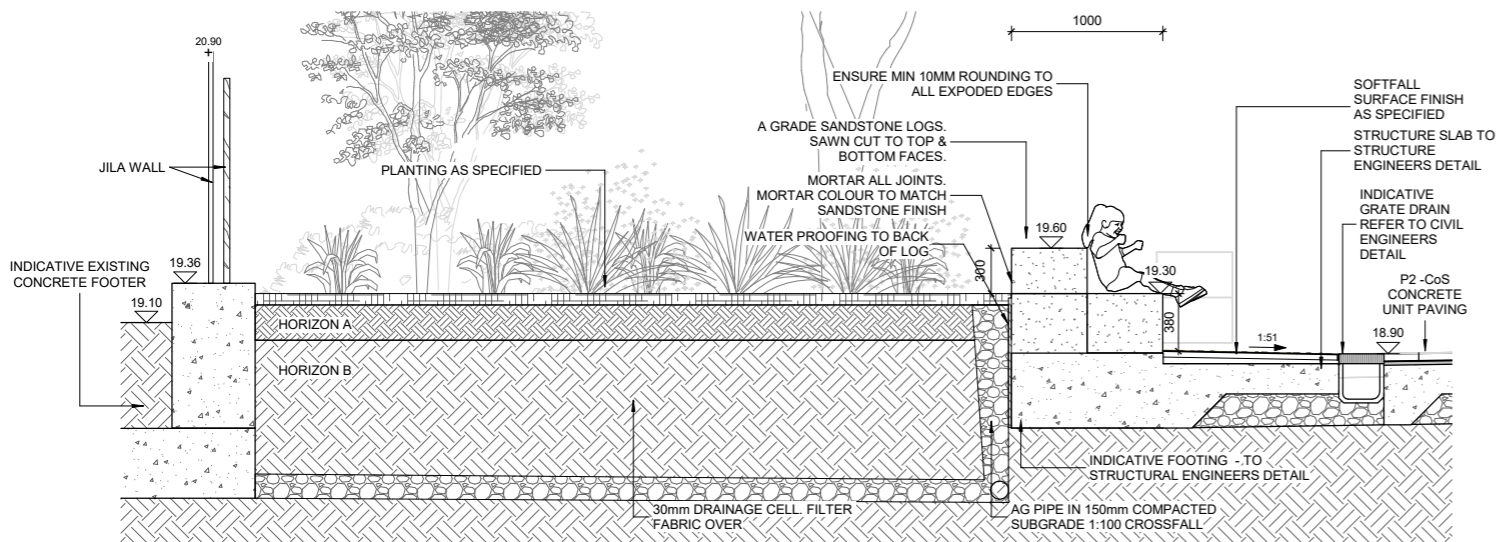


TYPICAL DETAILS

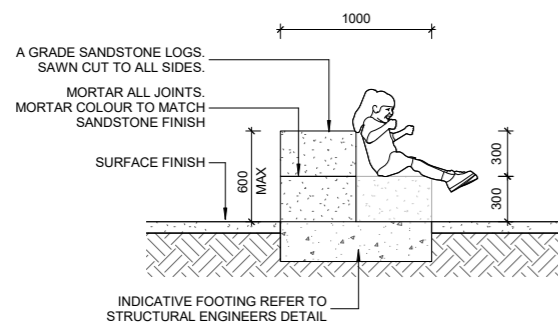
SANDSTONE ELEMENTS



1 B1 - TREE PIT INTERFACE WITH SOFTFALL
1:25 50



2 B2 - AMPHITHEATRE LARGE DETAIL
1:50



3 S1 - SANDSTONE TYPICAL
1:50

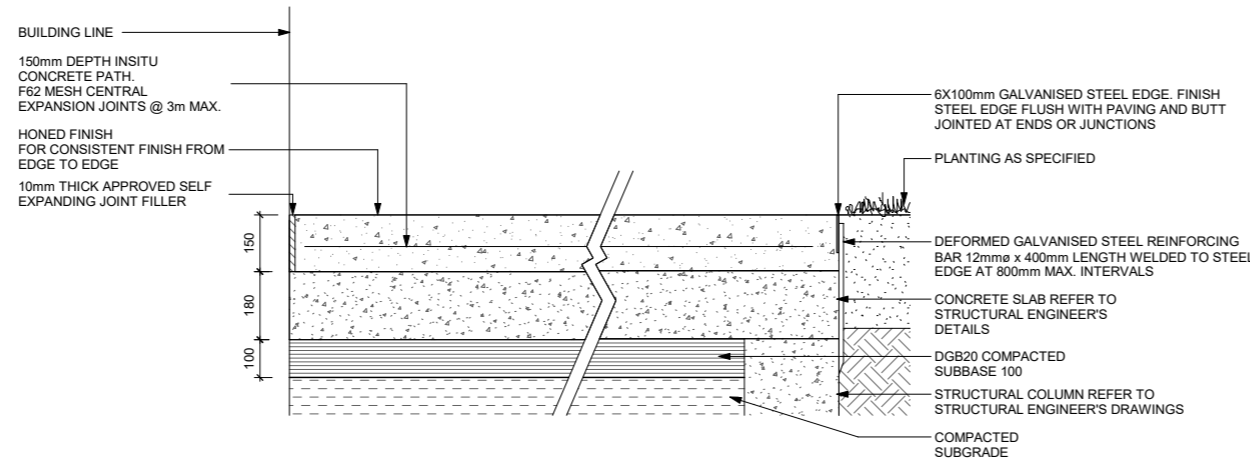


TYPICAL DETAILS

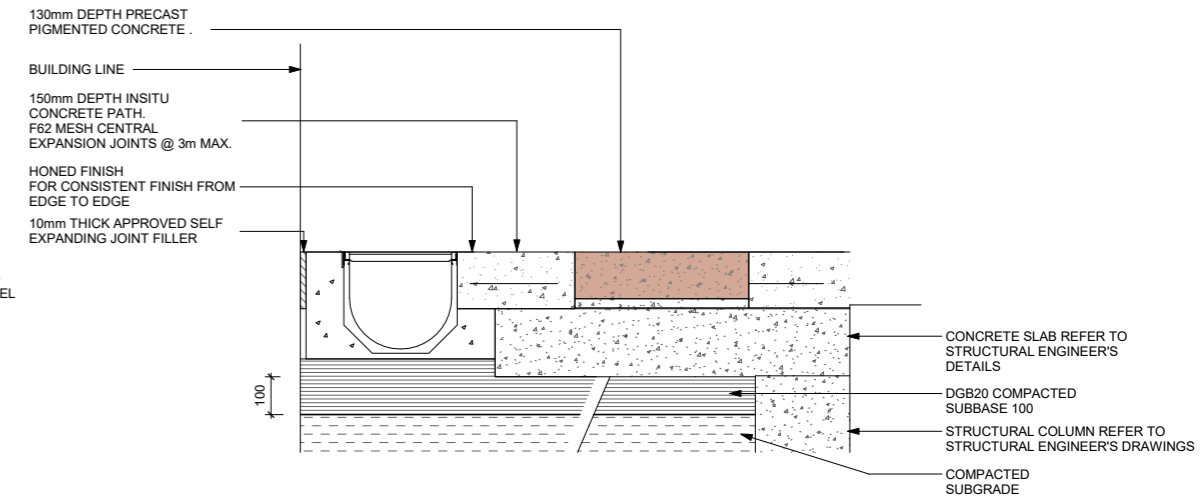
PAVING DETAILS



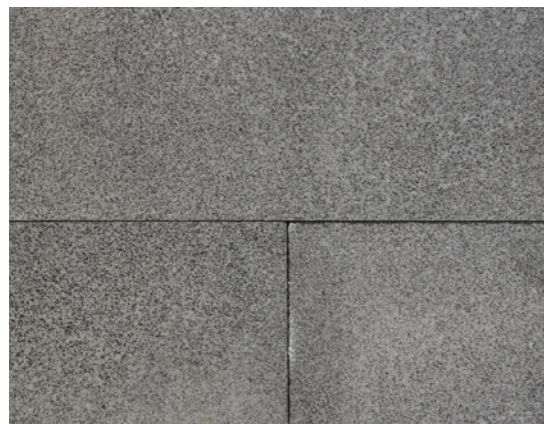
INSITU CONCRETE AND PIGMENTED DETAIL



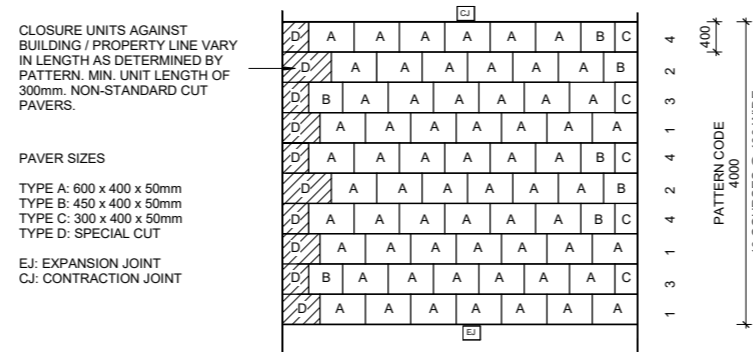
1 INSITU CONCRETE DETAIL
1:20



2 INSITU CONCRETE / PIGMENT CONCRETE DETAIL - GROUND
1:20

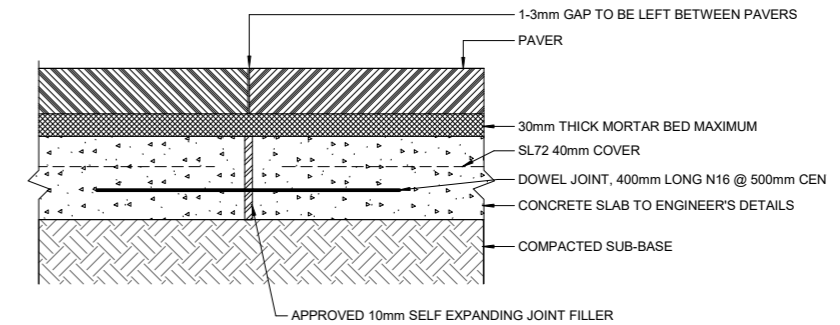


COS CONCRETE UNIT PAVER DETAIL (HONED EXPOSED AGGREGATE) - ZETLAND AVE & PORTMAN ST



NOTE:
1. MAINTAIN PAVER BAND WIDTH OF 400mm EXCEPT WHERE REQUIRED TO ADJUST PAVERS TO SUIT SITE CONDITIONS, THEN MIN. 350mm BAND WIDTH OVER MIN. 5 COURSES IS ACCEPTABLE.
2. 1-3mm GAP BETWEEN PAVERS.
3. PAVERS TO BE SET OUT 90 DEGREES TO BACK OF KERB

2 TYPICAL CONCRETE UNIT PAVING MODULE
1:100

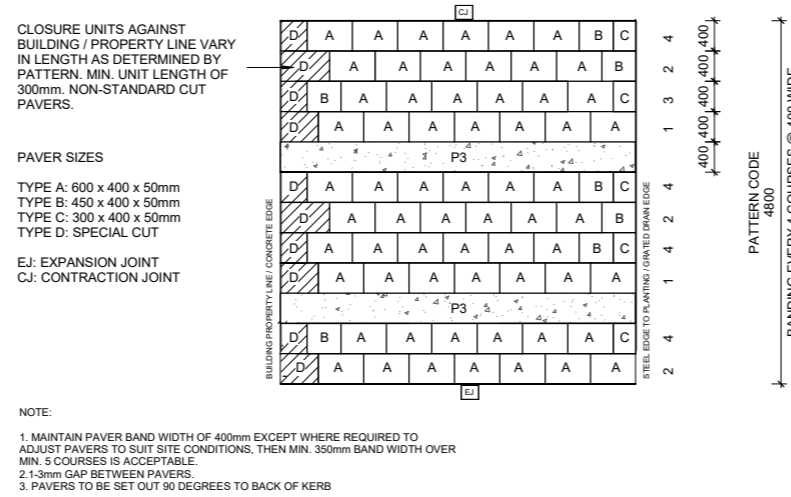


3 EXPANSION JOINT
1:10

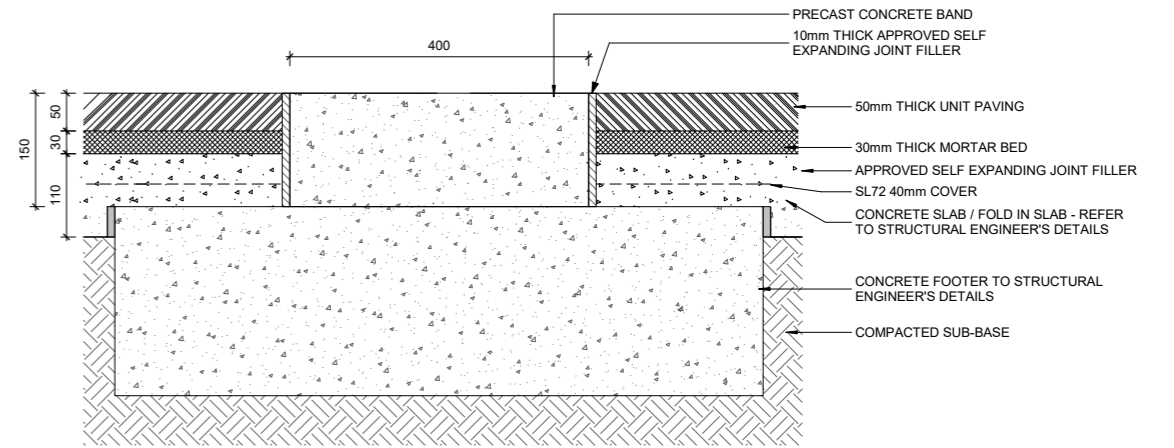
TYPICAL DETAILS



COS CONCRETE UNIT PAVER DETAIL (HONED EXPOSED AGGREGATE) WITH CONCRETE BANDING - GROUND FLOOR PAVING



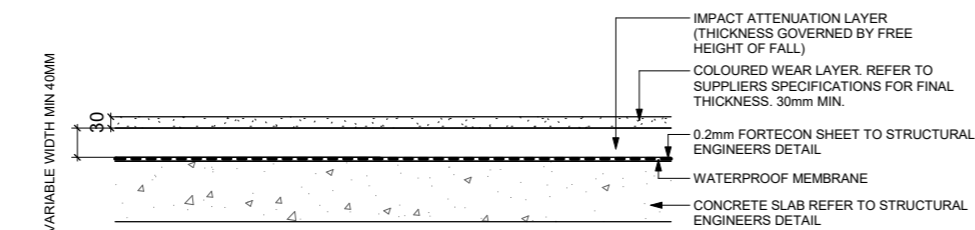
1 TYPICAL CONCRETE UNIT PAVING MODULE WITH CONCRETE BANDING
1 : 100



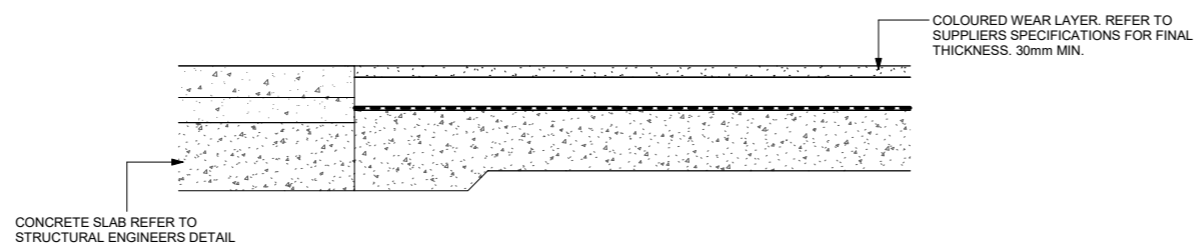
3 TYPICAL PAVING DETAIL SECTION WITH CONCRETE BANDING
1 : 10



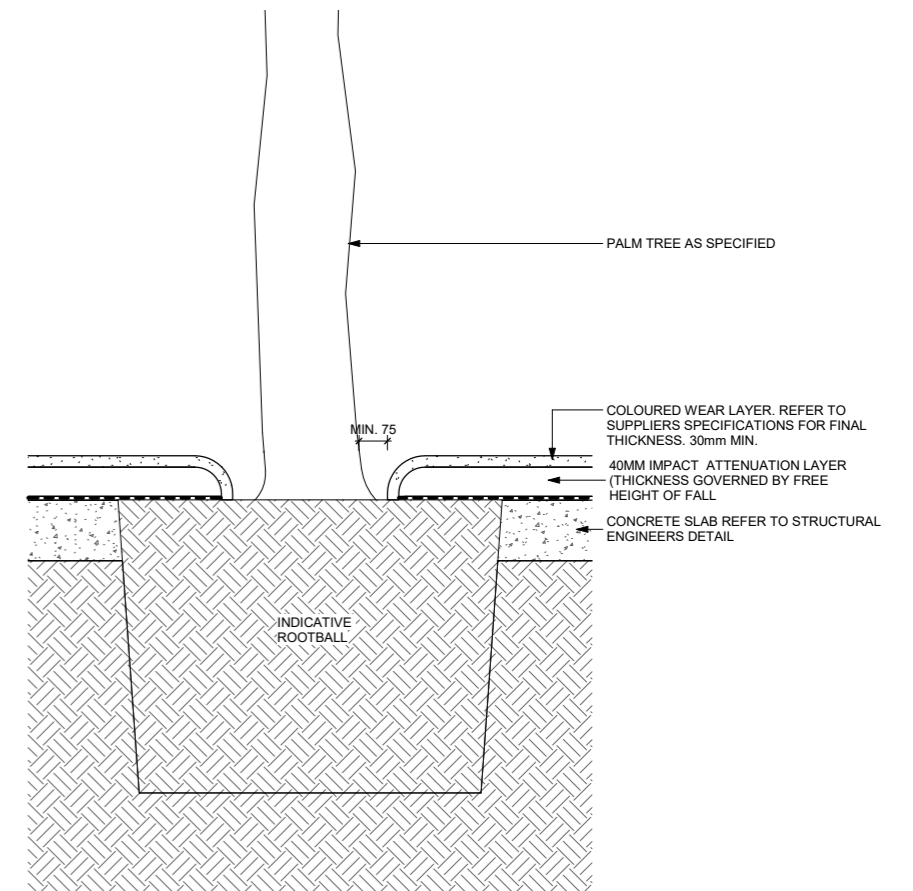
ROSEHILL TPV - ROOFTOP MOUNDING AREA



1 SOFTFALL DETAIL
1 : 10

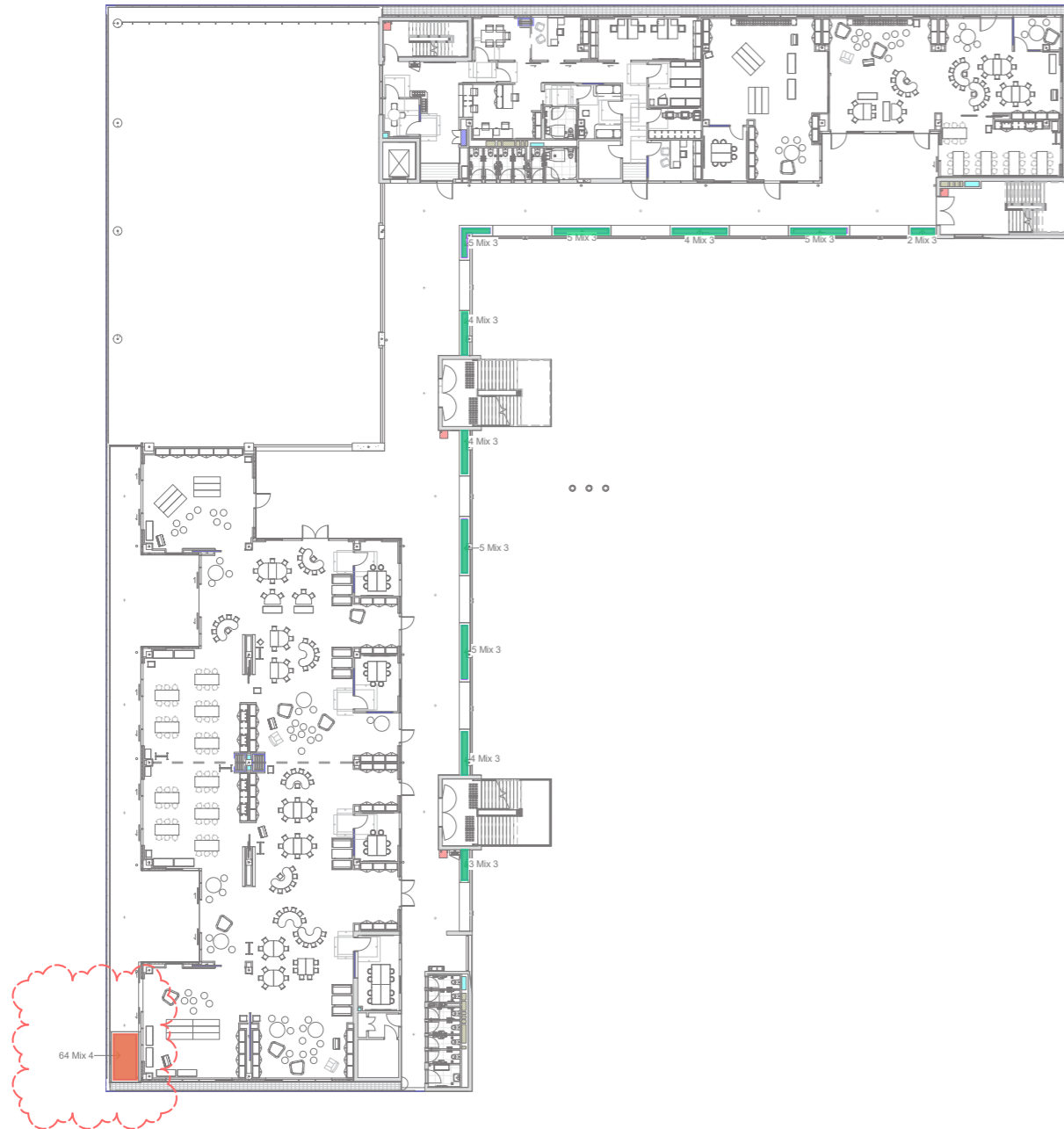


2 SOFTFALL INTERFACE WITH INSITU CONCRETE
1 : 20



SOFTFALL INTERFACE WITH PALM
1 : 20

PLANT ZONING LEVEL 1



UNDERSTOREY



Hibbertia scandens

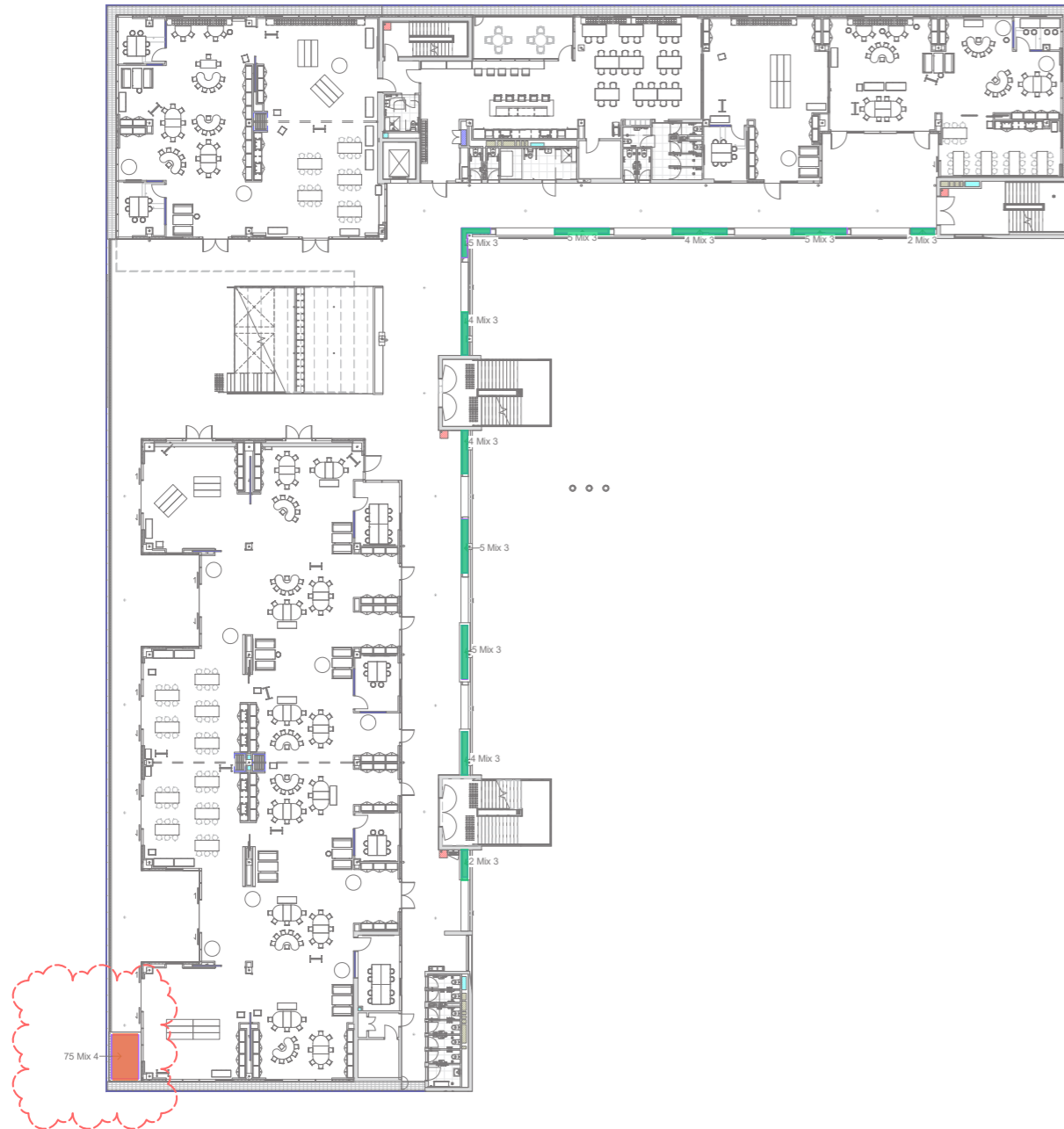


Asplenium australasicum *Asplenium nidus* *Dicksonia antarctica* *Viola hederacea*



0 10m
SCALE - 1:500 @ A3

PLANT ZONING LEVEL 2



UNDERSTOREY



Hibbertia scandens

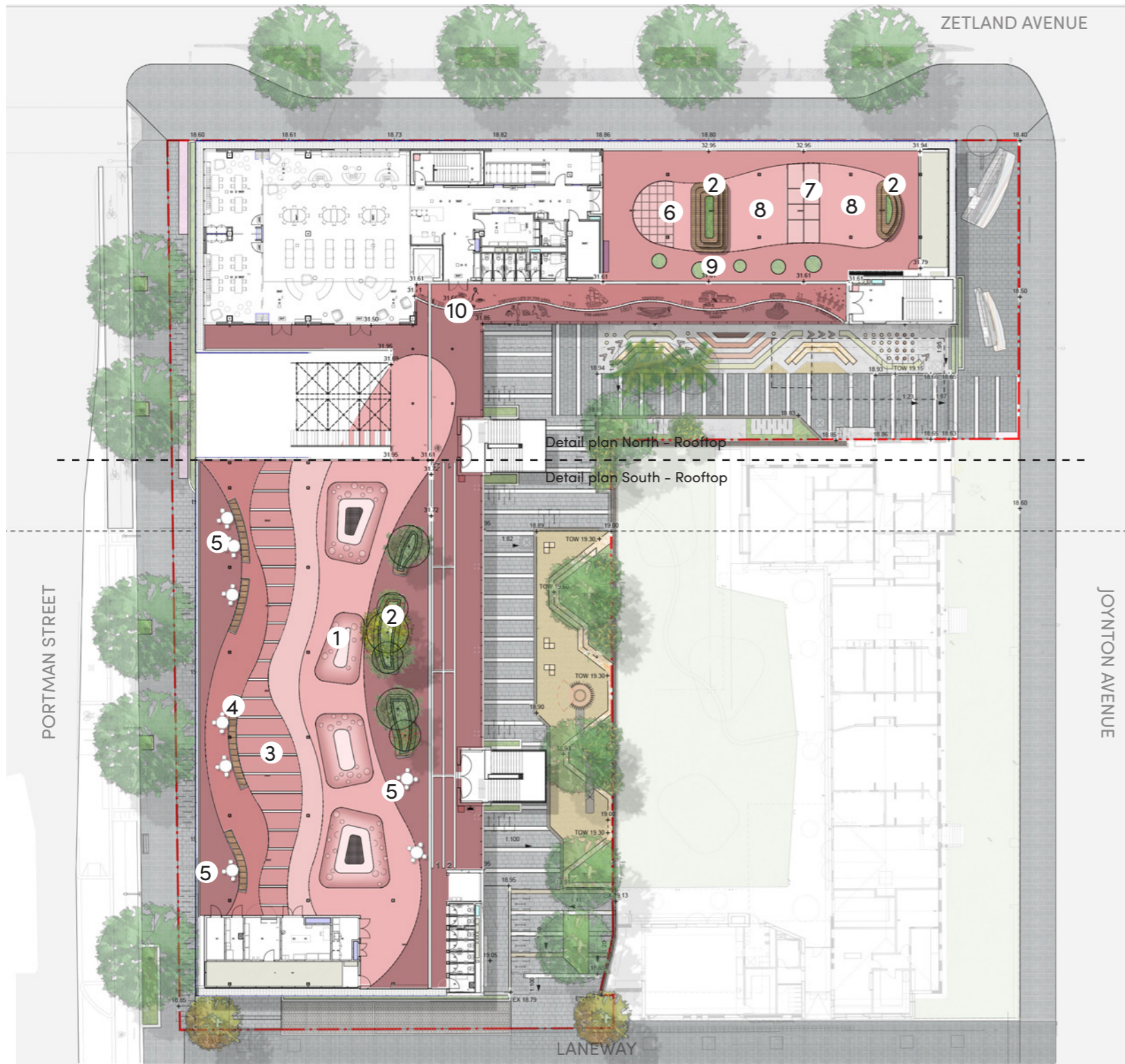


Asplenium australasicum *Asplenium nidus* *Dicksonia antarctica* *Viola hederacea*



ROOF LANDSCAPE PLAN

ROOFTOP



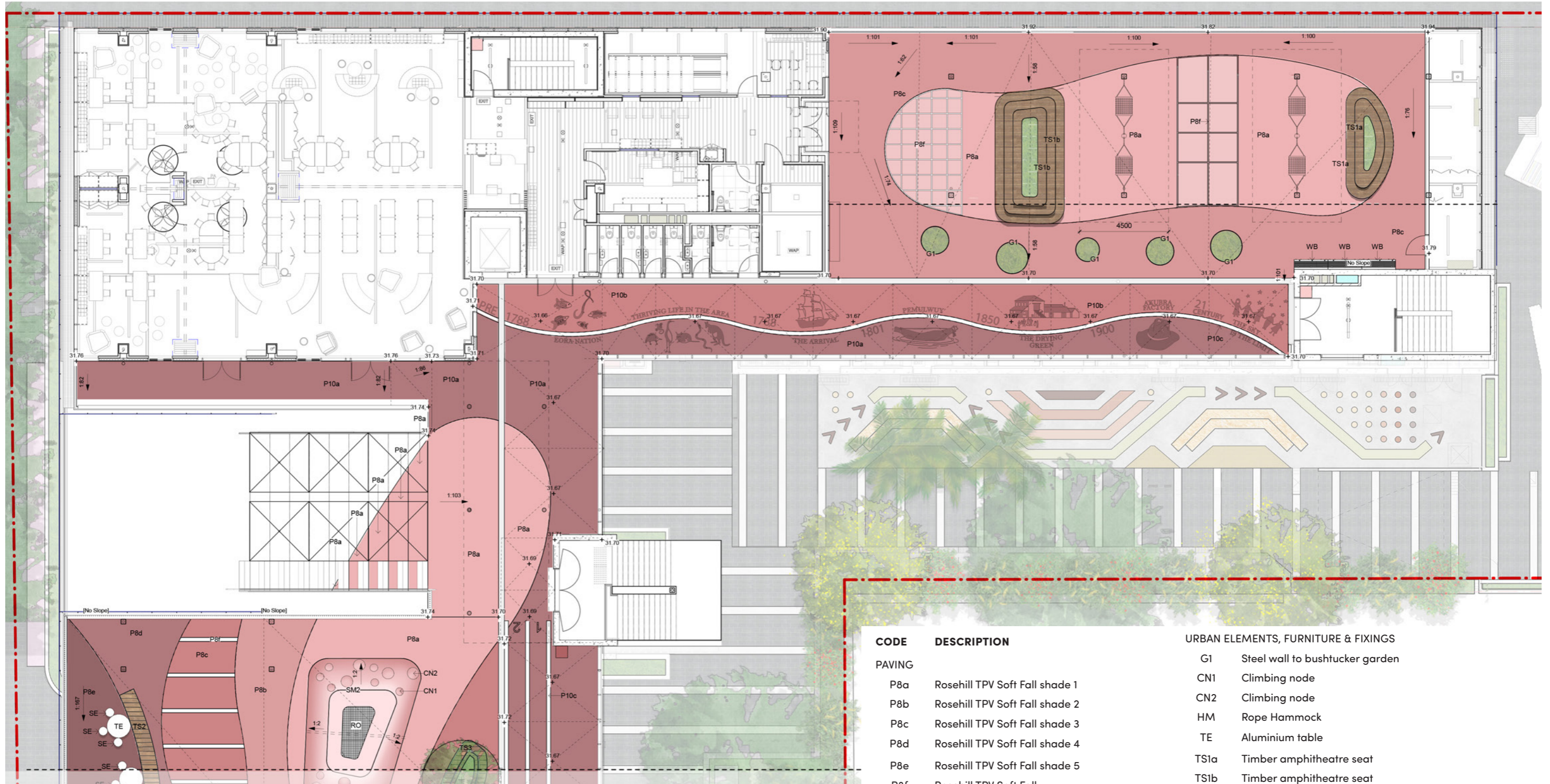
LEGEND

- Site boundary
- 1. Sofffall mounding
- 2. Planted seating
- 3. Banding in sofffall
- 4. Timber seating
- 5. Fixed furniture
- 6. Checkerboard play line markings
- 7. Handball line markings
- 8. Hammocks
- 9. Bush tucker gardens
- 10. Historical timeline

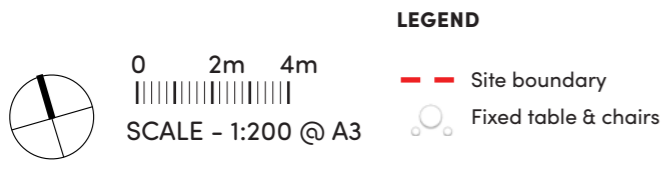


DETAIL PLAN NORTH ROOFTOP

NOTE:
REFER TO SCHEDULE FOR DETAILS



CODE	DESCRIPTION	URBAN ELEMENTS, FURNITURE & FIXINGS
PAVING		
P8a	Rosehill TPV Soft Fall shade 1	G1 Steel wall to bushtucker garden
P8b	Rosehill TPV Soft Fall shade 2	CN1 Climbing node
P8c	Rosehill TPV Soft Fall shade 3	CN2 Climbing node
P8d	Rosehill TPV Soft Fall shade 4	HM Rope Hammock
P8e	Rosehill TPV Soft Fall shade 5	TE Aluminium table
P8f	Rosehill TPV Soft Fall	TS1a Timber amphitheatre seat
P10a	Honed concrete paving (special aggregate) with Pigmented Colour Concrete cast In.	TS1b Timber amphitheatre seat
P10b	Honed concrete paving (special aggregate) with Pigmented Colour Concrete cast In.	TS2 Wide Timber seat
P10c	Honed concrete paving (special aggregate) with Pigmented Colour Concrete cast In.	TS3c Timber planter seat
P11	Concrete Honed Inlay	TS4 Timber seat
		WB Wash Basin - Aquofill Hydrobank with: 3x Anti-bacterial bottle refill points & 3x Drinking Fountains
		SE Timber top seat with aluminium frame
		SM2 Sofffall mound
		RO Rope Nets



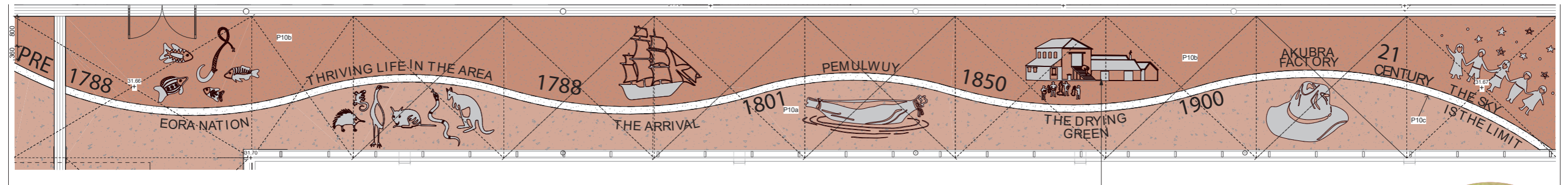
DETAIL NORTH ROOFTOP

THRIVING LIFE IN THE AREA (FAUNA & FLORA)



1801 - PEMULWUY RESISTANCE LEADER
(TOOLS/INDIGENOUS PEOPLE)

1900 - FACTORIES & AKUBRA HATS
(RABBIT ICON/HAT)



EORA NATION
OCCUPIED FOR THOUSANDS OF YEARS,
TO FISH, FORAGE AND HUNT



1788 - THE ARRIVAL
(SHIPS/SPYGLASS TELESCOPE)



1850 - DRYING SHEEPSKINS
'GREEN SQUARE USED TO STINK'



21C - YOU ARE THE FUTURE
(SKY IS THE LIMIT)

DETAIL PLAN SOUTH ROOFTOP

NOTE:
REFER TO SCHEDULE ROOFTOP FOR FURTHER DETAILS

LEGEND

- - - Site boundary
- Fixed Tables & Chairs

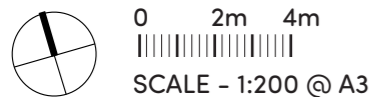
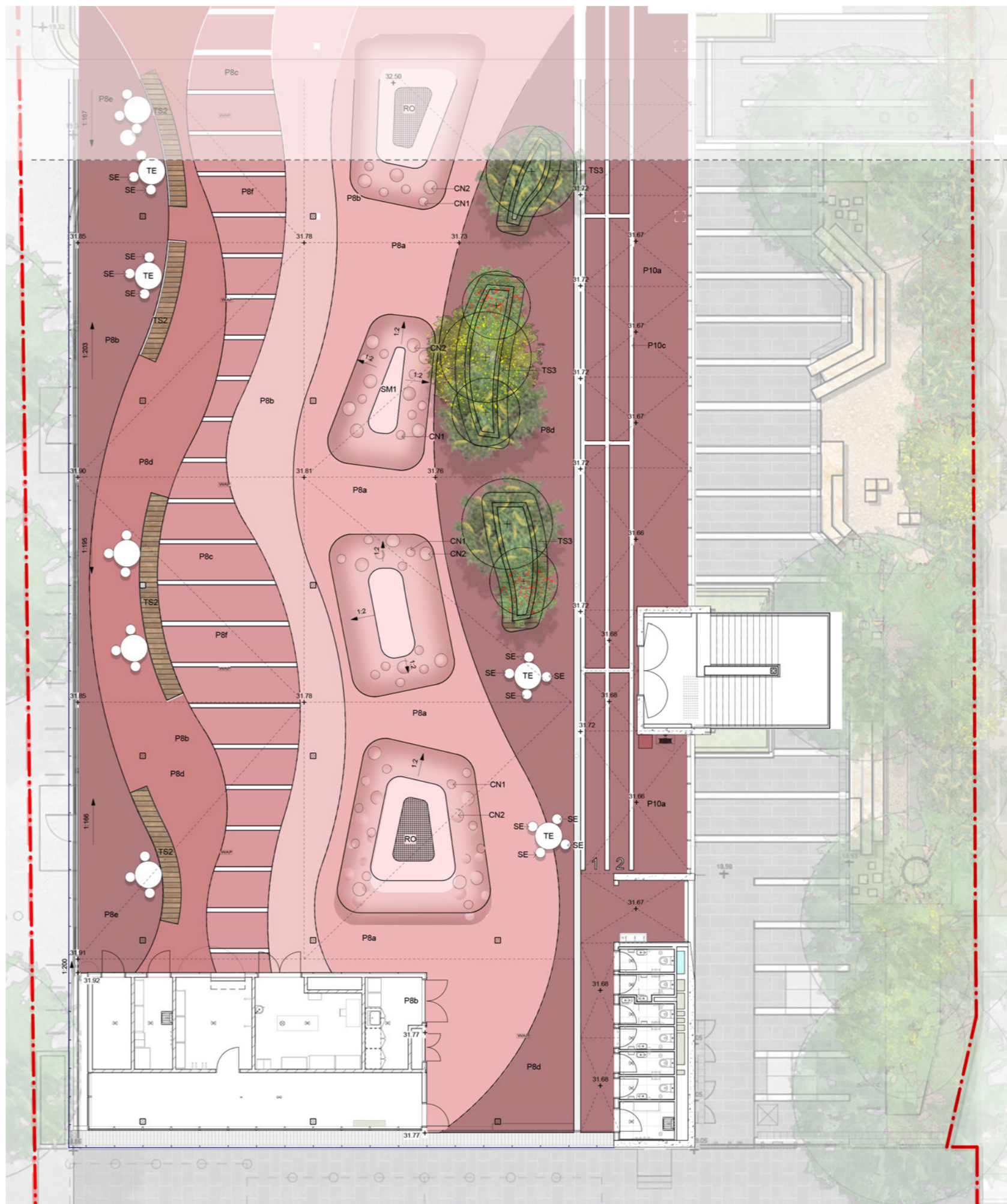
CODE DESCRIPTION

PAVING

- P8a Rosehill TPV Soft Fall shade 1
- P8b Rosehill TPV Soft Fall shade 2
- P8c Rosehill TPV Soft Fall shade 3
- P8d Rosehill TPV Soft Fall shade 4
- P8e Rosehill TPV Soft Fall shade 5
- P8f Rosehill TPV Soft Fall
- P10a Honed concrete paving (special aggregate) with Pigmented Colour Concrete cast In.
- P10b Honed concrete paving (special aggregate) with Pigmented Colour Concrete cast In.
- P10c Honed concrete paving (special aggregate) with Pigmented Colour Concrete cast In.
- P11 Concrete Honed Inlay

URBAN ELEMENTS, FURNITURE & FIXINGS

- G1 Steel wall to bushtucker garden
- CN1 Climbing node
- CN2 Climbing node
- HM Rope Hammock
- TE Aluminium table
- TS1a Timber amphitheatre seat
- TS1b Timber amphitheatre seat
- TS2 Wide Timber seat
- TS3c Timber planter seat
- TS4 Timber seat
- WB Wash Basin - Aquofill Hydrobank with: 3x Anti-bacterial bottle refill points & 3x Drinking Fountains
- SE Timber top seat with aluminium frame
- SM1 Sofffall mound
- SM2 Sofffall mound
- RO Rope Nets







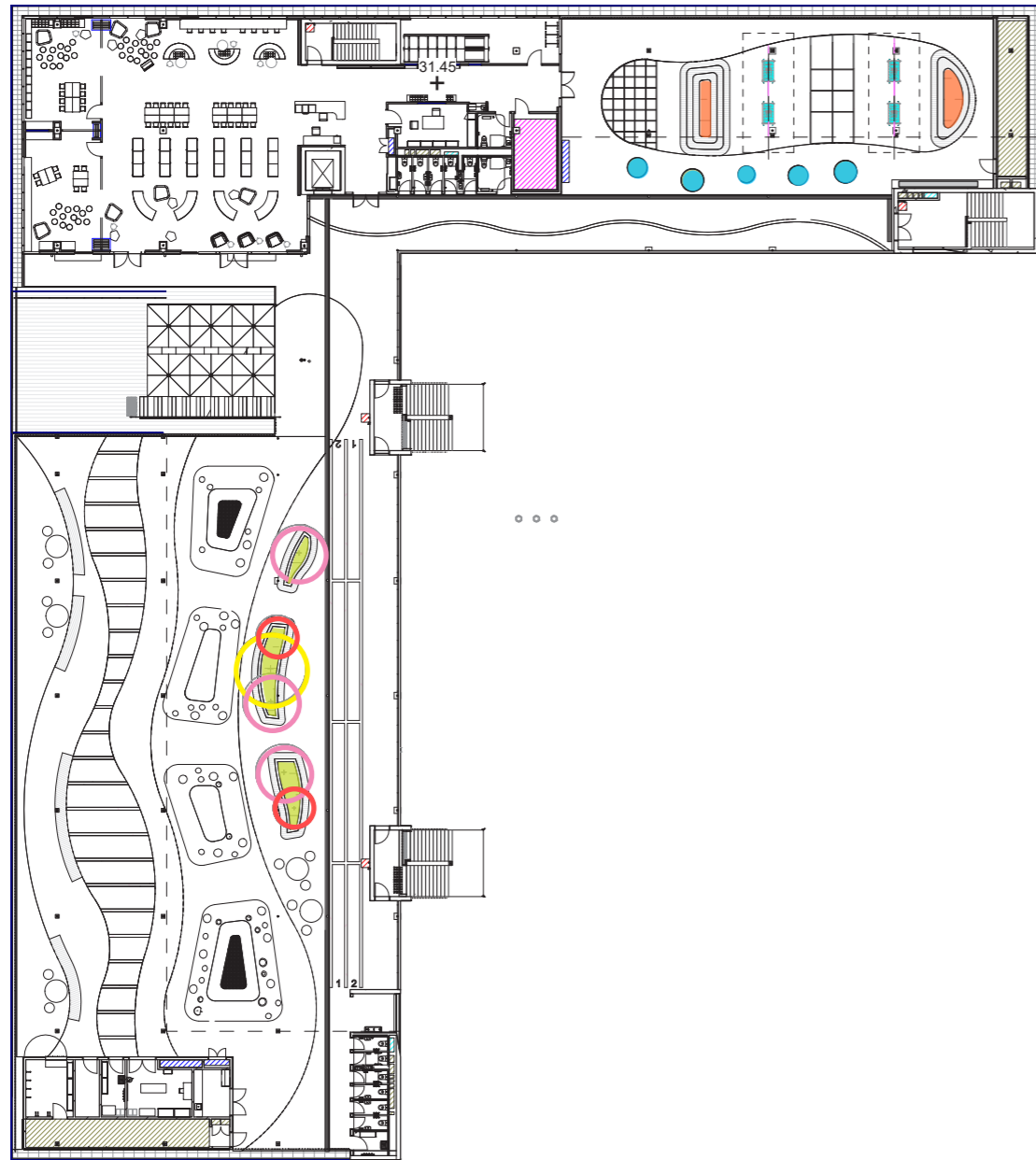
SCHEDULE ROOFTOP

CODE	ITEM/PRODUCT	DIMENSION	COLOUR + FINISH	SUPPLIER	SHOP DRAWINGS	SAMPLES	NOTES
PAVING							
P8a	Rosehill TPV Soft Fall shade 1	Thickness to manufacturers specification to conform with required FHOF's	Colour: 9345 C (shade of pink)	Surface designs	-	Required	Quality Systems: AS/NZS4422:2016 Amdt.1 Sofffall thickness to manufacturer's specification for the equipment provided. Trafficable surface finishes to comply with Australian slip resistance standard.
P8b	Rosehill TPV Soft Fall shade 2	Thickness to manufacturers specification to conform with required FHOF's	Colour: 2050 C (shade of pink)	Surface designs	-	Required	TQuality Systems: AS/NZS4422:2016 Amdt.1 Sofffall thickness to manufacturer's specification for the equipment provided. Trafficable surface finishes to comply with Australian slip resistance standard
P8c	Rosehill TPV Soft Fall shade 3	Thickness to manufacturers specification to conform with required FHOF's	Colour: 4031 C (shade of pink)	Surface designs	-	Required	Quality Systems: AS/NZS4422:2016 Amdt.1 Sofffall thickness to manufacturer's specification for the equipment provided. Trafficable surface finishes to comply with Australian slip resistance standard
P8d	Rosehill TPV Soft Fall shade 4	Thickness to manufacturers specification to conform with required FHOF's	Colour: 4050 C (shade of pink)	Surface designs	-	Required	Quality Systems: AS/NZS4422:2016 Amdt.1 Sofffall thickness to manufacturer's specification for the equipment provided. Trafficable surface finishes to comply with Australian slip resistance standard.
P8e	Rosehill TPV Soft Fall shade 5	Thickness to manufacturers specification to conform with required FHOF's	Colour: 2439 C (shade of pink)	Surface designs	-	Required	Quality Systems: AS/NZS4422:2016 Amdt.1 Sofffall thickness to manufacturer's specification for the equipment provided. Trafficable surface finishes to comply with Australian slip resistance standard.
P8f	Rosehill TPV Soft Fall	Thickness to manufacturers specification to conform with required FHOF's	Colour: 11-0601 TPG (white)	Surface designs	-	Required	Quality Systems: AS/NZS4422:2016 Amdt.1 Sofffall thickness to manufacturer's specification for the equipment provided. Trafficable surface finishes to comply with Australian slip resistance standard.
P10a	Honed concrete paving (special aggregate) with Pigmented Colour Concrete cast In.	150mm Thick	Colour: 4050 C (shade of pink)	Cathay	-	Required	Inspection points: (1)Approval of sample Colours, (2) at completion of formwork for each shape, for approval by client representative prior to pouring concrete. Contractor must provide minimum 1 week notice. Approval of sample Honing section required prior to commencement of honing. Trafficable surface finishes to comply with Australian slip resistance standard.
P10b	Honed concrete paving (special aggregate) with Pigmented Colour Concrete cast In.	150mm Thick	Colour: 2439 C (shade of pink)	Cathay	-	Required	Inspection points: (1)Approval of sample Colours, (2) at completion of formwork for each shape, for approval by client representative prior to pouring concrete. Contractor must provide minimum 1 week notice. Approval of sample Honing section required prior to commencement of honing. Trafficable surface finishes to comply with Australian slip resistance standard.
P10c	Honed concrete paving (special aggregate) with Pigmented Colour Concrete cast In.	150mm Thick	Colour: 11-0601 TPG (white)	Cathay	-	Required	Inspection points: (1)Approval of sample Colours, (2) at completion of formwork for each shape, for approval by client representative prior to pouring concrete. Contractor must provide minimum 1 week notice. Approval of sample Honing section required prior to commencement of honing. Trafficable surface finishes to comply with Australian slip resistance standard.
P11	Concrete Honed Inlay	150mm thick. 3mm Inlay	Colour: 11-0601 TPG (white)	Cathay	Required	Required	Inspection points: (1)Approval of sample Colours, (2) at completion of formwork for each shape, for approval by client representative prior to pouring concrete. Contractor must provide minimum 1 week notice. Approval of sample Honing section required prior to commencement of honing. Trafficable surface finishes to comply with Australian slip resistance standard.
URBAN ELEMENTS, FURNITURE & FIXINGS							
G1	Steel wall to bushtucker garden	Diameter varies, Steel Thickness: 20mm, Height: 500mm	Panton: 2050 C	Michelle Herbut I.D	Required	Required	Hold Point: Approval of sample and Shop Drawings required prior to installation.
CN1	Climbing node	200mm Diameter	Colour: 2439 C (pink shade)	Surface designs	Required	Required	Quality Systems: AS/NZS4422:2016 Amdt.1 Sofffall thickness to manufacturer's specification for the equipment provided.
CN2	Climbing node	400mm Diameter	Colour: 4050 (Pink Shade)	Surface designs	Required	Required	Quality Systems: AS/NZS4422:2016 Amdt.1 Sofffall thickness to manufacturer's specification for the equipment provided.
HM	Rope Hammock	2600x850	Hammock Support: Black Powdercoated Steel. Rope Colour: Natural beige	Keabel Leasure	Required	Required	Hold Point: Approval of sample and Shop Drawings required prior to installation.
TE	Aluminium table	1200mm wide x 620mm high	Aluminium powdercoated. Colour: White	MICHELLE HERBUT I.D.	Required	Required	Hold Point: Approval of sample and Shop Drawings required prior to installation.
TS1a	Timber amphitheatre seat	300mm High, 450 Wide, length varies.	150mmx70mm Accoya (Radiata Pine Timber Appearance class: Grade A1 Durability: Class 1. Finish colour: Solid Opaqu Tekona (TEKNOS)	MICHELLE HERBUT I.D.	Required	Required	Hold Point: Approval of sample and Shop Drawings required prior to installation.
TS1b	Timber amphitheatre seat	300mm High, 450 Wide, length varies.	150mmx70mm Accoya (Radiata Pine Timber Appearance class: Grade A1 Durability: Class 1. Finish colour: Solid Opaqu Tekona (TEKNOS)	MICHELLE HERBUT I.D.	Required	Required	Hold Point: Approval of sample and Shop Drawings required prior to installation.

CODE	ITEM/PRODUCT	DIMENSION	COLOUR + FINISH	SUPPLIER	SHOP DRAWINGS	SAMPLES	NOTES
URBAN ELEMENTS, FURNITURE & FIXINGS							
TS2	Wide Timber seat	350mm High, 800 Wide, length varies.	150mmx70mm Accoya (Radiata Pine Timber Appearance class: Grade A1 Durability: Class 1. Finish colour: Solid Opaqu Tekona (TEKNOS)	MICHELLE HERBUT I.D.	Required	Required	Hold Point: Approval of sample and Shop Drawings required prior to installation.
TS3c	Timber planter seat	350mm High seat w 300 High backrest (650mm). Refer to Section through Planter Seat.	150mmx70mm Accoya (Radiata Pine Timber Appearance class: Grade A1 Durability: Class 1. Finish colour: Solid Opaqu Tekona (TEKNOS)	MICHELLE HERBUT I.D.	Required	Required	Hold Point: Approval of sample and Shop Drawings required prior to installation.
TS4	Timber seat	350mm High, 450 Wide	150mmx70mm Accoya (Radiata Pine Timber Appearance class: Grade A1 Durability: Class 1. Finish colour: Solid Opaqu Tekona (TEKNOS)	MICHELLE HERBUT I.D.	Required	Required	Hold Point: Approval of sample and Shop Drawings required prior to installation.
WB	Wash Basin - Aquofill Hydrobank with: 3x Anti-bacterial bottle refill points & 3x Drinking Fountains	1724x501x956mm	Stainless Steel, End Panel Light grey	CIVIQ	Required	Required	Hold Point: Approval of sample and Shop Drawings required prior to installation.
SE	Timber top seat with aluminium frame	450mm wide x 350mm high	Seat: Timber to match TS1, Frame: Powdercoated aluminium, colour: white	MICHELLE HERBUT I.D.	Required	Required	Hold Point: Approval of sample and Shop Drawings required prior to installation.
SM1	Sofffall mound	Height varies from 900- to 1000mm. Width varies.	Colour: Even gradient of 2050 C starting from base of mound to 9345 C	Sofffall: Surface designs	Required	Required	Quality Systems: AS/NZS4422:2016 Amdt.1 Sofffall thickness to manufacturer's specification for the equipment provided.
SM2	Sofffall mound	Height varies from 900- to 1000mm. Width varies.	Colour: Even gradient of 2050 C starting from base of mound to 9345 C	Sofffall: Surface designs Rope Elements: Kabel Leisure	Required	Required	Quality Systems: AS/NZS4422:2016 Amdt.1 Sofffall thickness to manufacturer's specification for the equipment provided.
RO	Rope Nets	Refer to detail	Rope Colour to be coordinated with the rope supplier prior to construction	Kabel Leisure	Required	Required	Hold Point: - approval of sample and shop drawings required prior to installation. - Prior to rope being installed
SI	Irrigation	All planting areas to have drip irrigation will be specified with a smart Irrigation					

PLANT ZONING

ROOFTOP



TREES



Banksia ericifolia



Callistemon citrinus



Acacia implexa



UNDERSTOREY



Grevillea buxifolia

Goodenia ovata

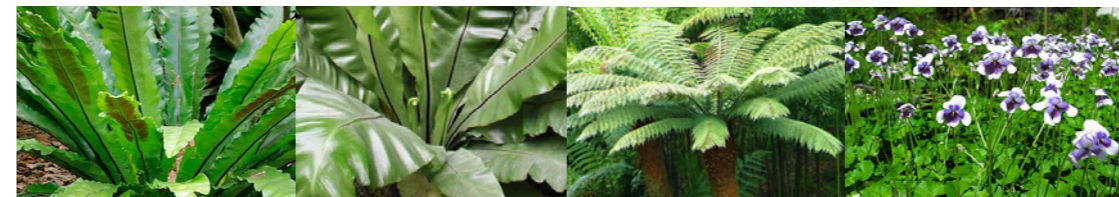
Lomandra longifolia

Eriostemon australasius



Dianella caerulea

Westringia fruticosa

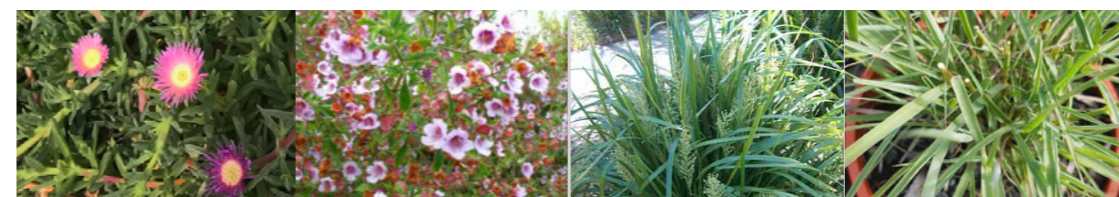


Asplenium australasicum

Asplenium nidus

Dicksonia antarctica

Viola hederacea

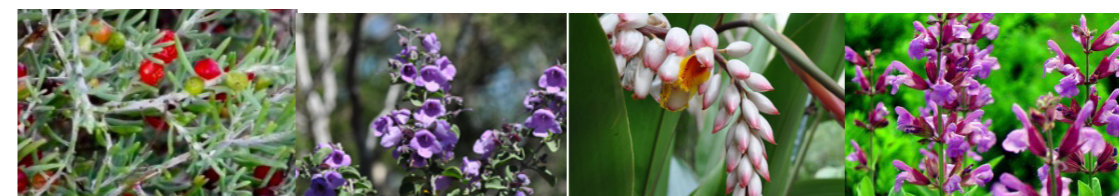


Carpobrotus glaucescens

Prostanthera incisa

Lomandra longifolia

Cymbopogon ambiguus



Enchylaena tomentosa

Prostanthera rotundifolia

Alpinia caerulea

Salvia officinalis

PLANTING PALETTE

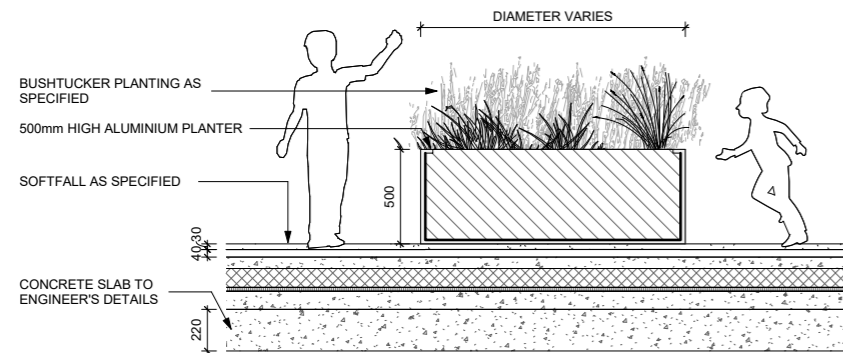
ROOFTOP



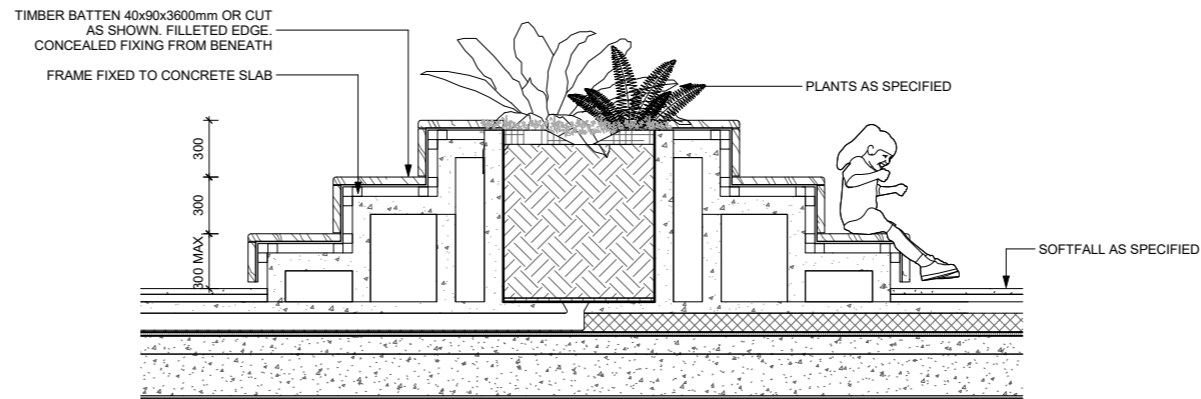
CODE	BOTANICAL NAME	COMMON NAME	MATURE HEIGHT	MATURE SPREAD	POT SIZE	DENSITY	QUANTITY
ROOFTOP							
TREES							
	<i>Banksia ericifolia</i>	Heath-leaved Banksia	4m	4m	100L	As Shown	3
	<i>Callistemon citrinus</i>	Crimson Bottlebrush	3m	3m	100L	As Shown	2
	<i>Acacia implexa</i>	Hickory Wattle	6m	5m	100L	As Shown	1
UNDERSTOREY							
SEAT PLANTING							
	<i>Grevillea buxifolia</i>	Red Spider Flower	1.5m	3m	400mL	300mm	24
	<i>Goodenia ovata</i>	Hop goodenia	1.5m	1.5m	400mL	300mm	24
	<i>Lomandra longifolia</i>	Basket Grass	1.5m	0.6m	150mL	300mm	24
	<i>Eriostemon australasius</i>	Pink Wax Flower	1.5m	0.2m	150mL	300mm	24
	<i>Dianella caerulea</i>	Blue Flax-lily	1m	1m	150mL	300mm	24
	<i>Westringia fruticosa</i>	Coastal Rosemary	1.5m	3m	400mL	300mm	24
SHADE PLANTING							
	<i>Asplenium australasicum</i>	Spleenworts	1.5m	2.5m	400mL	300mm	21
	<i>Asplenium nidus</i>	Bird's Nest Fern	1.5m	2.5m	400mL	300mm	21
	<i>Dicksonia antarctica</i>	Man Fern	2m	2m	400mL	300mm	21
	<i>Viola hederacea</i>	Native Violet	0.15m	1m	150mL	300mm	21
BUSH TUCKER GARDEN: SHRUBS							
	<i>Lomandra longifolia</i>	Basket Grass	1.5m	0.6m	150mL	300mm	14
	<i>Prostanthera rotundifolia</i>	Round-leaf Mint Bush	1.5m	2.5m	400L	300mm	14
	<i>Alpinia caerulea</i>	Native Ginger	1.7m	2m	400mL	300mm	14
	<i>Prostanthera incisa</i>	Native Thyme	1.5m	1m	400mL	300mm	14
	<i>Cymbopogon ambiguus</i>	Native Lemongrass	0.7m	0.7m	150mL	300mm	14
	<i>Enchylaena tomentosa</i>	Ruby Saltmarsh	1.0m	1.0m	150mL	300mm	14
	<i>Salvia officinalis</i>	Sage	2m	1m	400mL	300mm	14
BUSH TUCKER GARDEN: GROUND COVER							
	<i>Goodenia ovata</i>	Hop Goodenia	1.5m	1.5m	400mL	300mm	14
	<i>Carpobrotus glaucescens</i>	Pig Face	0.4m	2m	400mL	300mm	14

TYPICAL PLANTER ON STRUCTURE DETAILS

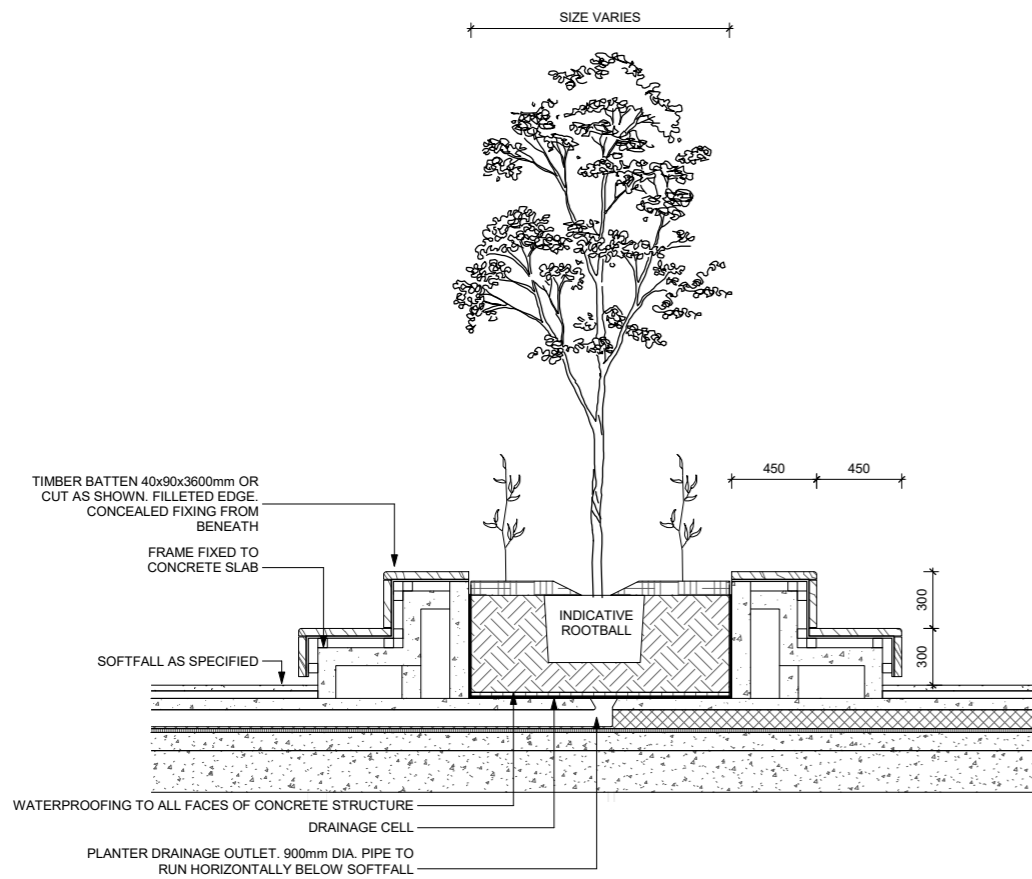
ROOFTOP



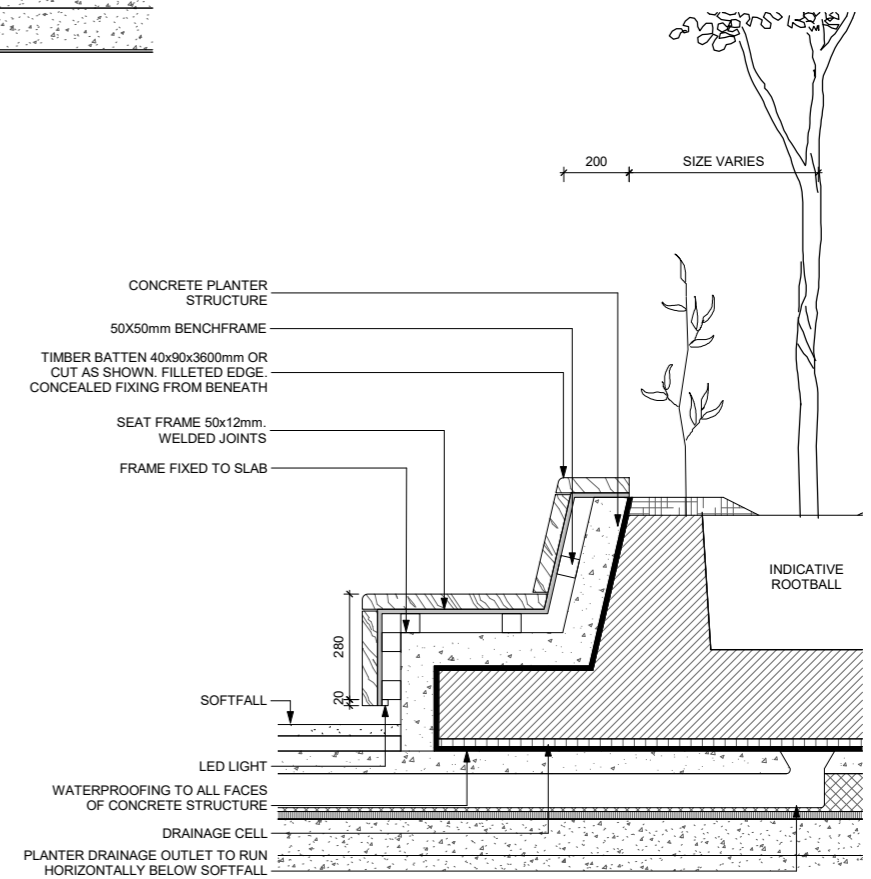
3 G1 - DETAIL OF ALUMINIUM PLANTER
1:40



5 TS1b - TIMBER AMPHITHEATRE
1:40



1 TS1a - TIMBER AMPHITHEATRE
1:40



4 TS3 - DETAIL SECTION THROUGH TIMBER PLANTER SEAT
1:20

turf

SYDNEY

35 Wellington St
Chippendale NSW
2008

P (02) 8394 9990

ABN: 77 097 739 663

TURFDESIGN.COM