



School Infrastructure NSW
Preliminary Construction Management Plan
Green Square Integrated Community Facility and
School
3 Joynton Avenue
Zetland NSW

16 August 2021
58719/136260 (Rev 1)
JBS&G Australia Pty Ltd

School Infrastructure NSW
Preliminary Construction Management Plan
Green Square Integrated Community Facility and
School
3 Joynton Avenue
Zetland NSW

16 August 2021

58719/136260 (Rev 1)
JBS&G Australia Pty Ltd

Table of Contents

Abbreviations.....	v
1. Introduction.....	1
1.1 Background.....	1
1.2 Proposed Works.....	2
1.3 Site Description.....	2
2. Site Operations.....	3
2.1 Legislative Requirements.....	3
2.2 Hours of Operation.....	3
2.3 Public Safety, Amenity & Site Security.....	3
2.4 Neighbour Management.....	4
2.5 Construction Phasing Strategy.....	4
3. Environment & Amenity.....	5
3.1 Noise & Vibration.....	5
3.2 Dust.....	6
3.3 Odour Control.....	6
3.4 Vegetation Protection.....	6
3.5 Stormwater & Sediment Control.....	6
4. Traffic Management.....	8
4.1 Construction Entry & Exit.....	8
4.2 Pedestrian Protection.....	8
5. Waste & Materials Reuse.....	10
5.1 Storage of Dangerous Goods.....	10
5.2 Waste Management & Recycling Principles.....	10
5.3 Site Contamination.....	10
5.4 Hazardous Materials Audit.....	11
5.5 Hazardous Materials Management Plan.....	11
6. Services Disconnection.....	12
7. Limitations.....	13

List of Figures

Figure 1 Site Location

Figure 2 Site Layout

Appendices

Appendix A Proposed Development Plans

Appendix B GSICFS Master Program

Abbreviations

Term	Definition
CMP	Construction Management Plan
COLA	Covered Outdoor Learning Spaces
CoS	Council of the City of Sydney
CPTMP	Construction Pedestrian Traffic Management Plan
EFSG	Educational Facilities Standards and Guidelines
EIS	Environmental Impact Statement
EPA	Environment Protection Authority
GSICFS	Green Square Integrated Community Facility and School
ICNG	Interim Construction Noise Guidelines
JBS&G	JBS&G Australia Pty Ltd
LGA	Local Government Area
NMLs	Noise Management Levels
OSHC	Out of Hours School Care
SINSW	School Infrastructure NSW
SSD	State Significant Development
SSDA	State Significant Development Application
TfNSW	Transport for NSW
WHS	Work Health and Safety

1. Introduction

1.1 Background

JBS&G Australia Pty Ltd (JBS&G) was engaged by School Infrastructure NSW (SINSW, the client) to prepare a Preliminary Construction Management Plan (CMP) to accompany an Environmental Impact Statement (EIS) prepared in support of the State Significant Development Application (SSDA) SSD 10381 for the development of 'Green Square Integrated Community Facility and School' (GSICFS) at 3 Joynton Avenue, Green Square (the 'Site').

The purpose of this document is to address Secretary's Environmental Assessment Requirements (SEARs) issued for the project, specifically item 21 'Construction Hours' as well as outline key intentions and constraints for the construction activities of the proposed GSICFS. SEARs item 21 requires the following:

Identify proposed construction hours and provide details of the instances where it is expected that works will be required to be carried out outside the standard construction hours.

Construction of the GSICFS is subject to the current SSDA (SSD 10381). Approval for demolition, site remediation and preparation works has been separately granted by the Council of the City of Sydney (CoS) under the following development applications (DAs) listed below.

- DA D/2011/1022: Demolition of buildings of lesser significance and partial internal demolition/rectification works to heritage listed buildings on the former South Sydney Hospital site, including the removal of 26 trees from the site and removal of northern car park, ancillary pathways, services and site rectification works.
- DA D/2020/923: Remediation and site preparation (refer to **Section 5.3**).

Based on the GSICFS master program (**Appendix B**), the construction program is anticipated to be completed between October 2021 and August 2023, with indicative timing for each stage as follows:

- Demolition and site remediation – October 2021 to February 2022
- New build construction:
 - Substructure – June to August 2022
 - Basement – July to September 2022
 - GF, L1, L2, L3 and L4 structure: July 2022 to January 2023
 - Access – October to December 2022
 - Façade – November 2022 to February 2023
 - Fitout – October 2022 to May 2023
 - Completion - June 2022 to August 2023

The works described in this preliminary CMP will be carried out by a Head Contractor on behalf of the SINSW. Once the Head Contractor has been appointed, a comprehensive CMP will be prepared by the Head Contractor with specific details and strategies for the management of activities on-site.

SINSW will ensure that the Head Contractor complies with the minimum standards detailed in this preliminary CMP, the accompanying EIS and supporting documentation as well as the requirements of the Council of the City of Sydney (CoS). The Head Contractor's requirements outlined in this preliminary CMP will be specifically included in the *GC21 General Conditions of Contract, GC21 Preliminaries, GC21 Conditions of Tendering and GC21 Tender Schedules*.

1.2 Proposed Works

The EIS seeks development consent for the works described below. GSICFS is a joint development between the City of Sydney (CoS) and SINSW (the Parties) located at 3 Joynton Ave Zetland.

The development will comprise a four storey building made up of various indoor and outdoor functional spaces including:

- Primary education facilities for up to 600 kindergarten to year 6 students:
 - Indoor and outdoor learning spaces
 - Administration and staff rooms
 - Library and School community hall
- Shared multi-function spaces within for school and community use:
 - 2 x multipurpose community facilities rooms to be operated solely by City of Sydney
 - 2 x multipurpose rooms to be shared by the City of Sydney and the primary school
- At ground level there is:
 - play spaces which will be a shared use between school and community.
 - multipurpose games court

1.3 Site Description

The subject site is located within the CoS LGA in the suburb of Green Square. The proposed development site covers an area of approximately 4,700m². The site is defined by Zetland Avenue to the north, Joynton Avenue to the east and a shared pedestrian path connecting Portman Street to the west. Site Plans are provided in **Appendix A**.

2. Site Operations

2.1 Legislative Requirements

The works will be undertaken in accordance with the following legislative requirements and any others that must be complied with in undertaking the works as required:

- *Work Health and Safety Act 2011*, NSW Government Legislation (WHS Act 2011)
- *NSW Environmental Protection Agency Protection of the Environment Operations Act 1997*, NSW Government Legislation, (POEO Act 1997)
- *Contaminated Land Management Act 1997*, NSW Government Legislation (CLM Act 1997)
- *Protection of the Environment Operations (Waste) Regulation 2014*, NSW Government Legislation (POEO Waste Regulation 2014)
- *Heritage Act 1977*, NSW Government Legislation (Heritage Act 1977)
- *Roads Act 1993*, NSW Government Legislation (Roads Act 1993)

2.2 Hours of Operation

The hours of demolition and construction (including the delivery of materials to and from site) will be in accordance with the *Interim Construction Noise Guideline*, DECC 2009:

- Monday to Friday - 7.00am and 6.00pm;
- Saturday - 8.00am to 1.00pm;
- No work on Sundays or public holidays;

Or, as otherwise approved by the consent authority.

Instances where works will be required to be carried out outside of standard construction hours are expected to include:

- Emergency works to avoid the loss of life, damage to property or to prevent environmental harm and/or to avoid structural damage to the building.
- Works where noise levels are assessed as not being above noise management levels (NMLs).
- Works where NMLs are exceeded, however mitigation measures and relevant notification occurs.

2.3 Public Safety, Amenity & Site Security

Appropriate hoarding / fencing (as specified in Australian Standards and SafeWork NSW requirements) will be installed to prevent public access and to maintain security to the area of the Works. Vehicular access/egress gates will be erected as required. These gates will be manned by qualified traffic supervisors at the times of vehicular access and egress to the Site. The site will be closed to the public at all times.

The works will be staged as detailed in **Section 2.5**. At various times, different portions of the site will be fenced. These protection measures will be reviewed at the time of contract award for the works to ensure alignment with proposed preferred construction methodologies and to ensure that the safety of nearby sensitive receptors including adjoining day care centre and general public is maintained at all times during the works.

The Head Contractor will need to comply with its duty under WHS management in accordance with the legislative requirements listed in **Section 2.1** of this document.

2.4 Neighbour Management

From the commencement of construction until completion of the works, the Head Contractor will be required to maintain a community liaison officer on the project. This officer will be contactable by both a mobile phone and email and the contact details will be clearly advertised on site hoardings, community updates and the like. The Head Contractor will be required to maintain a register of complaints and to report on the status of complaints on a monthly basis. For complaints that cannot be addressed by the Head Contractor, these will be presented to the appointed representative from the NSW Department of Education for resolution of the issues and for decisions to be made.

2.5 Construction Phasing Strategy

Delivery of the project will be undertaken in sequential phases. Phasing will involve enabling works separate to this application followed by defined main construction phases for the new building and external works. These phases are defined as follows:

- Phase 1 – Demolition of the existing Hydrotherapy Building and associated external works;
- Phase 2 – Construction of the new building, carpark and two outdoor sport courts;

Refer to architectural plans (**Appendix A**) for construction extent during each phase.

3. Environment & Amenity

The Head Contractor undertaking the works will be required to submit for review a comprehensive Environmental Management Plan (EMP) to ensure that all elements of the plan meet all statutory requirements, requirements of the accompanying EIS, planning approval and requirements as set out in Clause 6: Environmental Protection in the GC21 Preliminaries document.

The environmental performance of the Head Contractor will be monitored throughout the works. The following specific environmental management principles will be implemented on site.

3.1 Noise & Vibration

Reasonable and feasible measures will be implemented to reduce the noise arising from the Works so that noise from the site will not exceed the limits set out in the *Interim Construction Noise Guidelines*, DECC 2009 (ICNG) and *NSW Industrial Noise Policy*, EPA 2000. No machine work will occur outside normal working hours unless approval has been given by SINSW.

The following measures are proposed with reference to the ICNG:

- Use NMLs to identify demolition, excavation and construction noise sources or scenarios that require engineering controls or administrative management;
- Promote clear understanding of ways to identify and minimize noise from construction works;
- Focus on applying all feasible and reasonable work practices to minimize construction noise impacts;
- Provide flexibility in the selection of site-specific and reasonable work practices to minimize noise impacts;
- Undertake construction/ demolition work within approved standard hours where reasonably practicable with noise that is audible to other premises. Approval is required for works undertaken outside standard hours; and
- The use of noise reduction techniques including, but not limited to, barriers, enclosures and silencers shall be employed to ensure compliance with construction and demolition noise criteria.

The benchmarks used to assess vibration impacts due to the construction works are documented in the Noise and Vibration Impact Assessment Report, prepared by Acoustic Logic. The Noise and Vibration Impact Assessment documents recommendations and requirements for mitigation of noise and vibration during construction. This report forms part of the SSD application. The Noise and Vibration Impact Assessment notes that whilst not strictly required as part of ICNG, consideration should be given to the potential for cumulative noise/vibration impacts relating to construction associated with neighbouring developments, with feasible and reasonable mitigation measures to be implemented if possible, to minimise impacts on surrounding uses.

The noise mitigation treatment proposed by the Head Contractor will be included in the detailed Construction Management Plan. The following project-specific mitigation measures will need to be included in the plan:

- Checking of compliant maintenance regimes and statutory supervision of all equipment, such as making sure all trucks and machinery involved in the works are checked for defective exhaust systems and general servicing;
- Installation of localised noise barriers between piling rigs and nearby sensitive receptors including adjoining day care centre;

- Noise and vibration monitoring during construction particularly out of hours works;
- Selection of quietest feasible construction equipment;
- Use of rock saws and ripping where feasible in preference to rock breakers if rock removal is required (unlikely);
- Localised treatment, such as barriers, shrouds and the like around fixed plant, such as pumps, generators and concrete pumps;
- Provision of respite periods, particularly on Saturdays; and
- Trial testing of vibration levels where equipment is identified as having the potential to exceed the human comfort criteria or potential impact to heritage structures.

3.2 Dust

To control dust generation where necessary, water will be sprayed at the source of origin and surrounding areas to prevent airborne dust particles migrating into the surrounding environment. Management of dust prevention is to be developed by the Head Contractor and included in the detailed construction management plan.

Additional precautions that will be implemented during the Works include the covering of all haulage trucks with tarpaulins, management of dirt tracking to and from the Site and monitoring of weather conditions (including wind). Management and contingency plans will be developed to prevent any foreseeable impacts from dust. The Head Contractor will visually monitor for dust generation regularly throughout the Works.

3.3 Odour Control

Odour issues will be minimal for demolition and construction activity on site. All plant and machinery involved in the Works will be regularly serviced and checked for exhaust emissions and catalytic converters. Waste will be regularly removed from the Site.

3.4 Vegetation Protection

The Head Contractor upon appointment will be required to prepare a detailed site-specific Construction Management Plan. This Plan will need to demonstrate the measures that will protect trees and vegetation being retained under the development works. Vegetation protection should be in accordance with Australian Standard 4970-2009, *Protection of Trees on Development Sites*. Where branch pruning works are required, works should be carried out in accordance with Australia Standard AS 4373-2007 *Pruning of Amenity Trees* and the works are to be undertaken by an experienced and qualified arborist.

Recommendations and requirements for vegetation protection are documented in the Arborist Report produced by C M S Surveyors Pty Ltd and it forms part of the SSD Application.

3.5 Stormwater & Sediment Control

As a minimum, the erosion and sediment controls for the Works shall be designed, installed and maintained in accordance with the requirements of *Managing Urban Stormwater: Soils and Construction* "The Blue Book" 2004 (4th edition).

Reference should be made to the Stormwater Management Plan produced by Bonacci Consulting Engineers as part of the SSD Application for stormwater and sediment control.

Drainage of surface run-off will be allowed to flow along existing contours (down slope) with the existing drainage system on-site of kerbs, gutters, gully pits, pipes and stormwater runoff passing through installed filtration systems prior to being discharged off-site.

The site will be continually cleaned of rubble to minimise possible sediment flow during rainfall periods. Stormwater kerbs and drainage lines will have sediment controls in the form of hay bales or sedimentation socks.

Stormwater grate inlets surrounding works areas will be covered with geotextile fabric to allow water to enter into drains whilst retaining sediments.

Should external surface run-off flow into works areas, it may need to be diverted (using hay bales) to reduce sediment transportation. All drainage control devices will be regularly checked particularly prior, during and after heavy rainfall periods.

The Head Contractor will be required to prepare a detailed Stormwater Management Plan which will cover all aspects of stormwater and sediment management and control during construction.

4. Traffic Management

As part of its Construction Management Plan, the Head Contractor will be required to submit a Construction Traffic Management Plan for approval by SINSW prior to commencement of the works. A preliminary Construction Pedestrian Traffic Management Plan (CPTMP) has been prepared by Traffix as part of the SSD Application.

During construction, the following vehicles and equipment may be used:

- Bulldozers, backhoes and excavators;
- Articulated and heavy rigid trucks;
- Mobile cranes;
- Concrete delivery trucks;
- Concrete pumps;
- Man and material hoists;
- Scissor and boom lifts, and
- Forklift trucks.

4.1 Construction Entry & Exit

Details of service vehicle movements including likely arrival and departures routes have been assessed within the Preliminary CPTMP produced by Traffix.

Construction vehicles would be restricted to the state road network and vehicles will likely originate from this network, with movements along local streets prohibited. It is envisaged the main construction entry point will be off Portman Street. The primary construction vehicle access to the site will be via Portman Street.

Additional access points are:

- Joynton Avenue – Services access and additional entry; and
- Zetland Avenue – will be the Main Entry once the facility is operative

A detailed list of mitigation measures for vehicle movements is included in the Preliminary CPTMP produced by Traffix.

Potential cumulative construction impacts relating to neighbouring developments have been considered in the Preliminary CPTMP, with construction activities not expected to conflict with GSICFS. Recommendation was provided to liaise with neighbouring developments to ensure critical construction activities do not overlap to minimise construction impacts.

4.2 Pedestrian Protection

Temporary hoarding appropriate to the interaction between pedestrians and construction works (as per SafeWork NSW requirements and Australian Standards) will be constructed to prevent unauthorised access to the Site.

Pedestrians will be diverted and controlled by traffic controllers as necessary. Authorised traffic controllers will be stationed at the entry and exit gates to the site. The traffic controllers will be contacted via two-way radio by the entering/exiting vehicles. The traffic controllers will then stop pedestrian movement across the entry/exit point during the movement of vehicles into and out of the access gates. Authorised personnel will be directed through the B-class hoarding along the street frontages.

The Head Contractor will need to produce a detailed Traffic Management Plan which addresses pedestrian and vehicle activities at or near the site.

5. Waste & Materials Reuse

5.1 Storage of Dangerous Goods

Dangerous goods (such as petrol, diesel, oxy-acetylene, oils, glues etc) will be stored in a lockable compound with sufficient ventilation and bunded to prevent spills from entering the ground or waterways in accordance with relevant codes of practice and standards. Material safety data sheets on all of these flammable and potentially harmful liquids will be provided by the Head Contractor undertaking the Works.

5.2 Waste Management & Recycling Principles

Demolition and removal of in-ground services will be required on site. Where possible, any material generated from the works will be recycled apart from selected soft demolition materials and hazardous materials such as asbestos, lead-based paints, phenols and polychlorinated biphenyls (PCB). The Head Contractor will be required to achieve compliance with the EPA guidelines. All contaminated and hazardous wastes are required to be disposed by licensed subcontractors.

The following measures are adopted to encourage the management and reduction of waste to minimize the loss of natural resources and landfill space:

- Emphasise the importance of recycling and waste reduction;
- Encourage the use of recycled materials where it is reasonably practical;
- Minimise the use of packaging materials and recycle packaging materials where possible;
- Waste concrete to be sent to a concrete recycling plant where possible;
- Provide sufficient waste bins and regularly empty them;
- Provide recycling bins or use commingled recycling bins;
- Separate waste streams on-site where possible;
- Avoid mixing contaminated materials with clean materials;
- Separate removed native vegetation from general construction waste, mulched and stockpiled for re-use; and
- Non-recyclable general waste will be disposed at an approved waste disposal facility.

References should be made to the City of Sydney Council's waste management guidelines. The Head Contractor must comply with the requirements as set out in the GC21 Preliminaries document (Section 6.3 – Waste Management) in its waste management practices.

5.3 Site Contamination

Previous contamination investigation identified the presence of fill material underlying the site reported to be impacted with polycyclic aromatic hydrocarbon (PAH), heavy metals, total petroleum hydrocarbons (TPH) and asbestos to varying degrees. A Remedial Action Plan (RAP) has been prepared by JBS&G to address identified contamination issues and included as part of the SSD Application. The remediation strategy proposed in the RAP (JBS&G 2020) comprises a cap and containment strategy based on physical separation, inclusive of implementation of an on-going site environmental management plan.

Approval for remediation and site preparation works has been separately granted under DA D/2020/923. Noting that the built form and landscaping elements as proposed in the SSDA works are to form part of the capping layer, some remediation works will therefore be required to be completed during the construction phase (SSDA) works. It will be required that the RAP be implemented consistent with the requirements of this CMP.

5.4 Hazardous Materials Audit

A licensed demolition contractor and/ or Head Contractor are to inspect the site to determine the presence of any hazardous materials in accordance with the requirements of AS2601.

5.5 Hazardous Materials Management Plan

A Hazardous Materials Management Plan will be prepared in accordance with the requirements of AS2601 prior to the commencement of any demolition works.

The removal, handling and disposal of asbestos materials are to be undertaken only by an appropriately licensed contractor and in accordance with the requirements of the SafeWork NSW and the NSW EPA).

All asbestos and other hazardous materials are to be appropriately contained and disposed of at a facility holding the appropriate licence issued by the NSW EPA.

Signage compliant with requirements of SafeWork NSW and Australian Standards is to be displayed on sites where buildings to be demolished contain asbestos materials.

Any hazardous materials discovered during the Works should be dealt with by the Head Contractor in accordance with the requirements set out in the GC21 Preliminaries document (Section 5.6 – Hazardous Substances).

6. Services Disconnection

In general terms the following principles will be adopted when disconnecting services:

- If the Head Contractor proposes to carry out 'out of hours' work, the Head Contractor must provide details of the time and frequency of such work. No work will occur outside normal working hours unless approval has been given by SINSW. It is anticipated that such work will be kept to a minimum;
- All Service authorities will be consulted prior to the Works commencing to ascertain lead times and correct termination locations;
- All termination works will be undertaken in accordance with design engineers' specifications and instructions;
- All termination works will be undertaken by suitably licensed contractors;
- Any termination works that impact on adjoining owners will be notified and will be undertaken out of hours to minimise impact; and
- The Head Contractor must comply with the requirements as set out in the GC21 Preliminaries document (Section 5.4 – Existing Services) for locating and dealing with the existing services.

7. Limitations

This report has been prepared for use by the client who has commissioned the works in accordance with the project brief only, and has been based in part on information obtained from the client and other parties.

The advice herein relates only to this project and all results conclusions and recommendations made should be reviewed by a competent person with experience in environmental investigations, before being used for any other purpose.

JBS&G accepts no liability for use or interpretation by any person or body other than the client who commissioned the works. This report should not be reproduced without prior approval by the client, or amended in any way without prior approval by JBS&G, and should not be relied upon by other parties, who should make their own enquires.

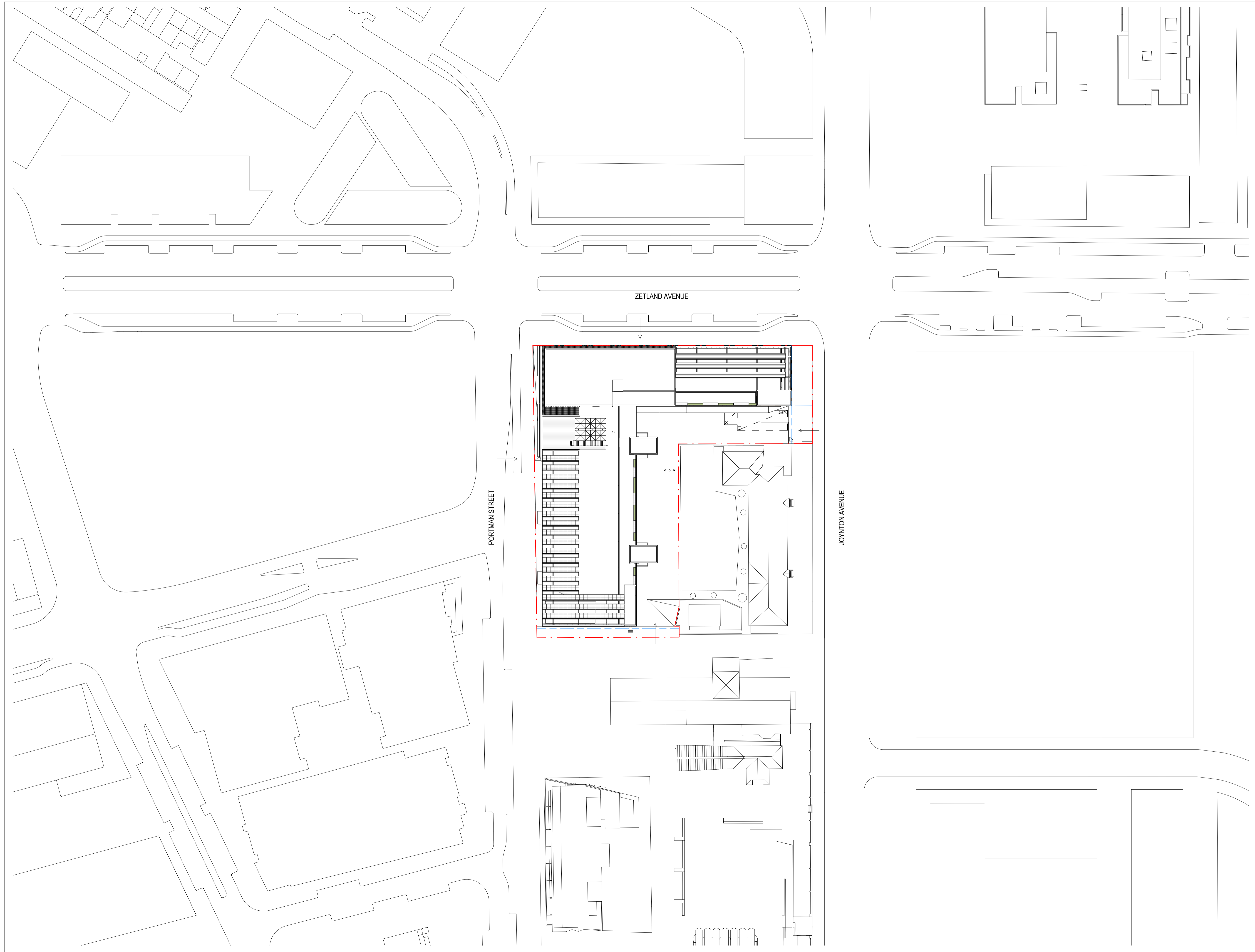
Sampling and chemical analysis of environmental media is based on appropriate guidance documents made and approved by the relevant regulatory authorities. Conclusions arising from the review and assessment of environmental data are based on the sampling and analysis considered appropriate based on the regulatory requirements.

Limited sampling and laboratory analyses were undertaken as part of the investigations undertaken, as described herein. Ground conditions between sampling locations and media may vary, and this should be considered when extrapolating between sampling points. Chemical analytes are based on the information detailed in the site history. Further chemicals or categories of chemicals may exist at the site, which were not identified in the site history and which may not be expected at the site.

Changes to the subsurface conditions may occur subsequent to the investigations described herein, through natural processes or through the intentional or accidental addition of contaminants. The conclusions and recommendations reached in this report are based on the information obtained at the time of the investigations.

This report does not provide a complete assessment of the environmental status of the site, and it is limited to the scope defined herein. Should information become available regarding conditions at the site including previously unknown sources of contamination, JBS&G reserves the right to review the report in the context of the additional information.

Appendix A Proposed Development Plans



NSW ARCHITECTS REGISTRATION BOARD /
 NOMINATED ARCHITECTS
 8556 NIWOTSHKA TITCHKOSKY
 7115 JULIAN WIGHTON
 7053 MATTHEW BLAIR
 7151 PHILLIP ROSSINGTON
 4937 JAMES GROSS
 Telephone +61 2 8297 7200
 Facsimile +61 2 8297 7299
 www.bvn.com.au

INTELLECTUAL PROPERTY
 COPYRIGHT BVN ARCHITECTURE PTY LIMITED. UNLESS OTHERWISE
 AGREED IN WRITING, ALL RIGHTS TO THIS DOCUMENT ARE SUBJECT TO
 PAYMENT IN FULL OF ALL BVN CHARGES. THIS DOCUMENT MAY ONLY
 BE USED FOR THE EXPRESS PURPOSE AND PROJECT FOR WHICH IT
 HAS BEEN CREATED AND DELIVERED. AS NOTED IN WRITING BY
 BVN AND THIS DOCUMENT MAY NOT BE OTHERWISE USED OR COPIED.
 ANY UNAUTHORIZED USE OF THIS DOCUMENT IS AT THE USER'S SOLE
 RISK AND WITHOUT LIMITING BVN'S RIGHTS, THE USER RELEASES AND
 INDEMNIFIES BVN FROM AND AGAINST ALL LOSS SO ARISING.

NOTE
 CONTRACTOR TO CHECK AND VERIFY ALL DIMENSIONS ON SITE PRIOR
 TO COMMENCEMENT OF WORK OR PREPARATION OF SHOP DRAWINGS.
 DO NOT SCALE THIS DRAWING.

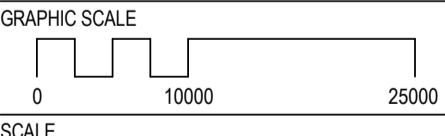
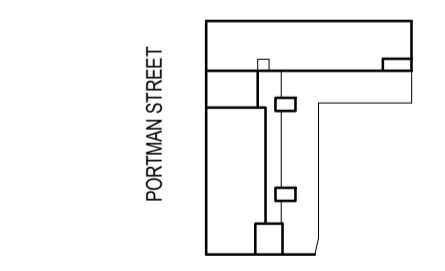
ISSUE	DATE	FOR
A	05/03/21	SSDA

STRUCTURAL AND CIVIL ENGINEER
MEINHARDT BONACCI
 +61 2 8247 8400
BUILDING SERVICES
STANTEC
 +61 2 9493 9700
ESD & GREEN STAR
NDY
 +61 2 9928 6800
LANDSCAPE ARCHITECT
TURF DESIGN
 +61 2 8394 9990
BCA AND DDA
PHILLIP CHUN
 +61 2 9412 23202
PROJECT MANAGER
COLLIERS INTERNATIONAL
 +61 2 9257 0222
END USER
CITY OF SYDNEY
 +61 2 9265 9333
END USER
NSW DEPARTMENT OF EDUCATION
 1300 679 332
CLIENT

SCHOOL INFRASTRUCTURE NSW
 PROJECT

GREEN SQUARE INTEGRATED
COMMUNITY FACILITY AND SCHOOL
 ZETLAND AVENUE, GREEN SQUARE 2017
 BVN PROJECT NUMBER

1908014.000
 DRAWING KEY



1 : 500@A1
 STATUS

SSDA
 DRAWING

PROPOSED SITE PLAN

ISSUE
DA-A10-XX-01
A

ISSUE	DATE	FOR
A	05/03/21	SSDA

STRUCTURAL AND CIVIL ENGINEER

MEINHARDT BONACCI

+61 2 8247 8400

BUILDING SERVICES

STANTEC

+61 2 9493 9700

ESD & GREEN STAR

NDY

+61 2 9928 6800

LANDSCAPE ARCHITECT

TURF DESIGN

+61 2 8394 9990

BCA AND DDA

PHILLIP CHUN

+61 2 9412 23202

PROJECT MANAGER

COLLIERS INTERNATIONAL

+61 2 9257 0222

END USER

CITY OF SYDNEY

+61 2 9265 9333

END USER

NSW DEPARTMENT OF EDUCATION

1300 679 332

CLIENT

SCHOOL INFRASTRUCTURE NSW

PROJECT

GREEN SQUARE INTEGRATED

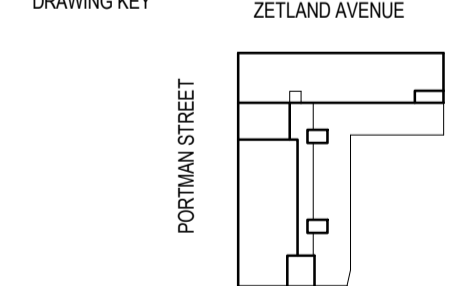
COMMUNITY FACILITY AND SCHOOL

ZETLAND AVENUE, GREEN SQUARE 2017

BVN PROJECT NUMBER

1908014.000

DRAWING KEY ZETLAND AVENUE



TRUE NORTH PROJECT NORTH



GRAPHIC SCALE



SCALE

1:200@A1

STATUS

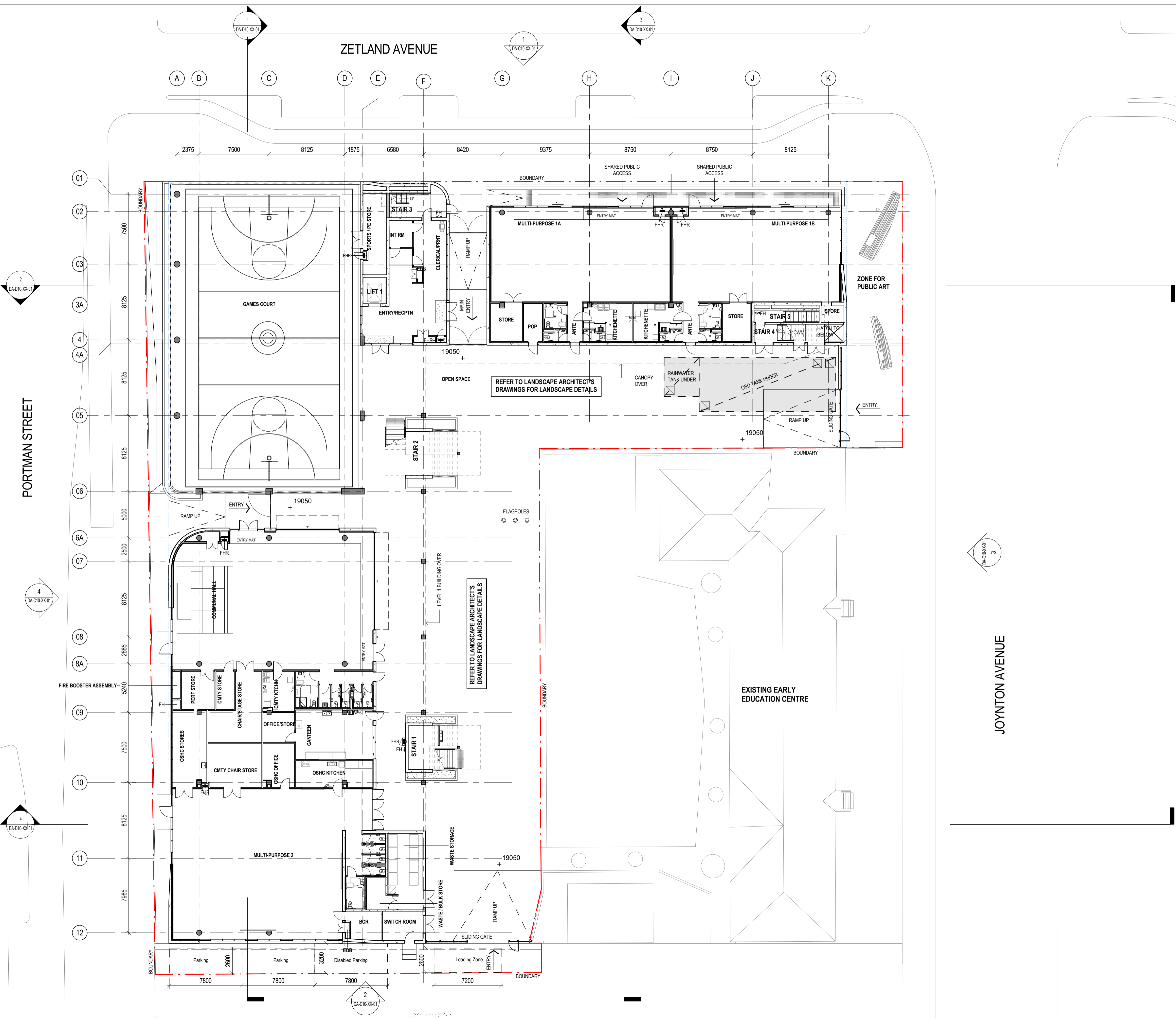
SSDA

DRAWING

GA PLAN - GROUND LEVEL

ISSUE

DA-B10-00-00 A



ISSUE	DATE	FOR
A	05/03/21	SSDA

STRUCTURAL AND CIVIL ENGINEER

MEINHARDT BONACCI
 +61 2 8247 8400

BUILDING SERVICES

STANTEC
 +61 2 9493 9700

ESD & GREEN STAR

NDY
 +61 2 9928 6800

LANDSCAPE ARCHITECT

TURF DESIGN
 +61 2 8394 9990

BCA AND DDA

PHILLIP CHUN
 +61 2 9412 23202

PROJECT MANAGER

COLLIERS INTERNATIONAL
 +61 2 9257 0222

END USER

CITY OF SYDNEY
 +61 2 9265 9333

END USER

NSW DEPARTMENT OF EDUCATION
 1300 679 332

CLIENT

SCHOOL INFRASTRUCTURE NSW

PROJECT

GREEN SQUARE INTEGRATED

COMMUNITY FACILITY AND SCHOOL
 ZETLAND AVENUE, GREEN SQUARE 2017
 BVN PROJECT NUMBER

1908014.000

DRAWING KEY

ZETLAND AVENUE

PORTMAN STREET

JOYNTON AVENUE

TRUE NORTH

PROJECT NORTH

GRAPHIC SCALE

0 4000 10000

SCALE

1:200@A1

STATUS

SSDA

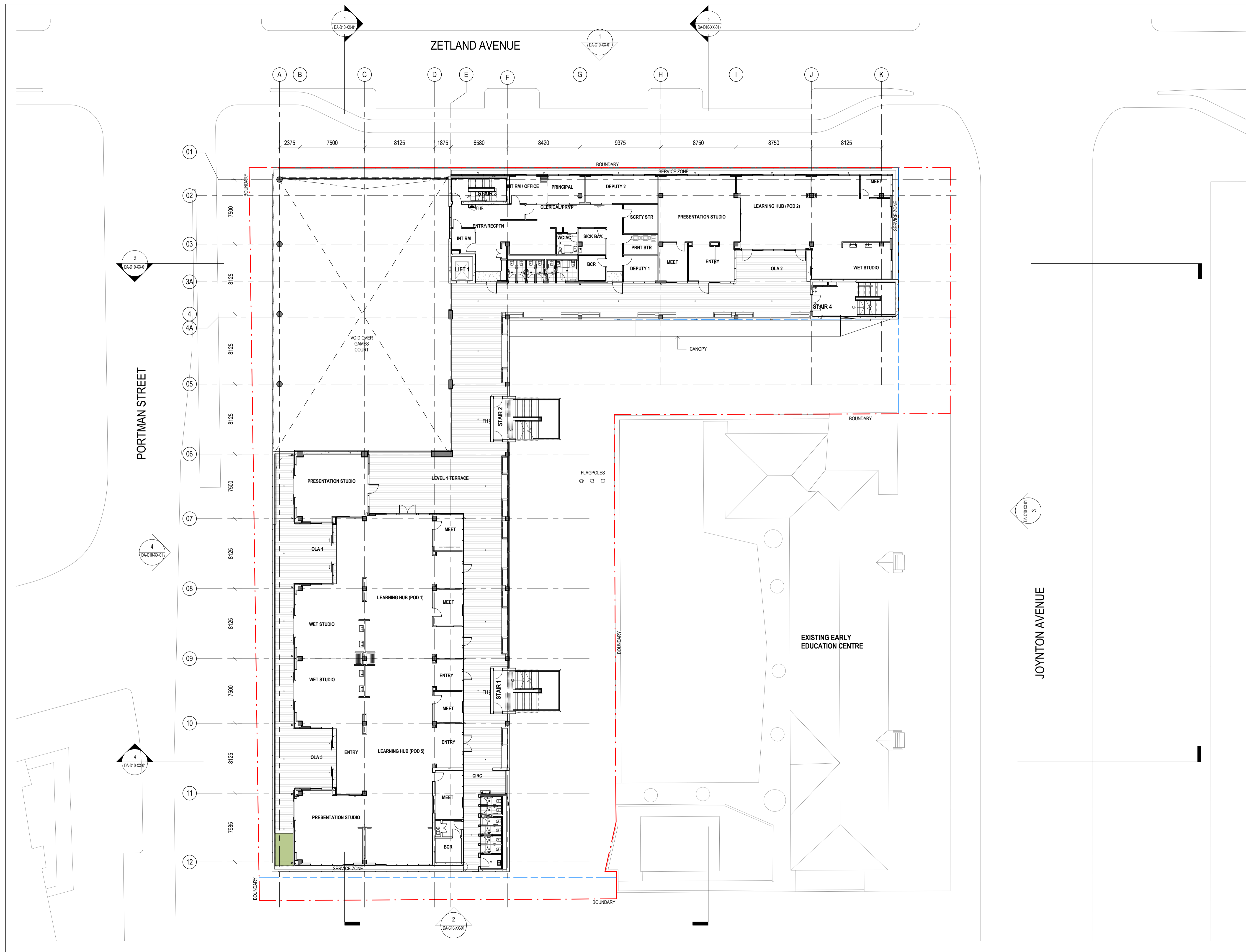
DRAWING

GA PLAN - LEVEL 01

ISSUE

DA-B10-01-00

A



ISSUE	DATE	FOR
A	05/03/21	SSDA

STRUCTURAL AND CIVIL ENGINEER

MEINHARDT BONACCI

+61 2 8247 8400

BUILDING SERVICES

STANTEC

+61 2 9493 9700

ESD & GREEN STAR

NDY

+61 2 9928 6800

LANDSCAPE ARCHITECT

TURF DESIGN

+61 2 8394 9990

BCA AND DDA

PHILLIP CHUN

+61 2 9412 23202

PROJECT MANAGER

COLLIERS INTERNATIONAL

+61 2 9257 0222

END USER

CITY OF SYDNEY

+61 2 9265 9333

END USER

NSW DEPARTMENT OF EDUCATION

1300 679 332

CLIENT

SCHOOL INFRASTRUCTURE NSW

PROJECT

GREEN SQUARE INTEGRATED

COMMUNITY FACILITY AND SCHOOL

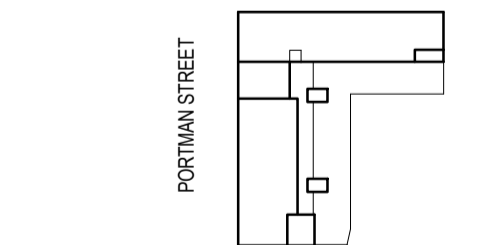
ZETLAND AVENUE, GREEN SQUARE 2017

BVN PROJECT NUMBER

1908014.000

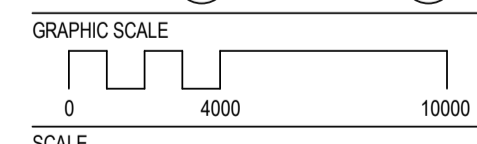
DRAWING KEY

ZETLAND AVENUE



TRUE NORTH

PROJECT NORTH



1:200@A1

STATUS

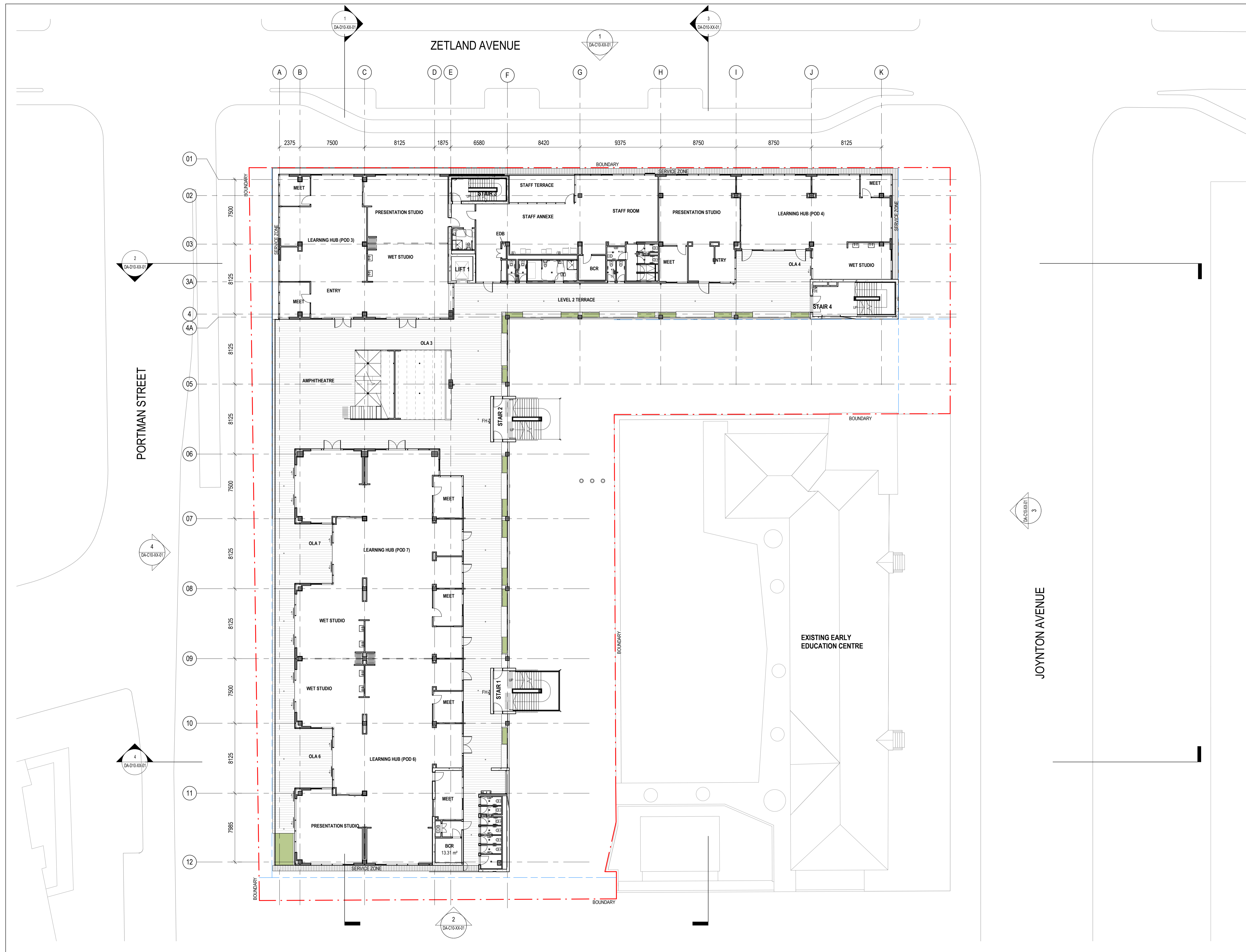
SSDA

DRAWING

GA PLAN - LEVEL 02

ISSUE
A

DA-B10-02-00



INTELLECTUAL PROPERTY
 COPYRIGHT BVN ARCHITECTURE PTY LIMITED. UNLESS OTHERWISE
 AGREED IN WRITING, ALL RIGHTS TO THIS DOCUMENT ARE SUBJECT TO
 PAYMENT IN FULL OF ALL BVN CHARGES. THIS DOCUMENT MAY ONLY
 BE USED FOR THE EXPRESS PURPOSE AND PROJECT FOR WHICH IT
 HAS BEEN CREATED AND DELIVERED. AS NOTIFIED IN WRITING BY
 BVN AND THIS DOCUMENT MAY NOT BE OTHERWISE USED OR COPIED.
 ANY UNAUTHORIZED USE OF THIS DOCUMENT IS AT THE USER'S SOLE
 RISK AND WITHOUT LIMITING RIGHTS THE USER RELEASES AND
 INDEMNIFIES BVN FROM AND AGAINST ALL LOSS OR ARISING.

NOTE
 CONTRACTOR TO CHECK AND VERIFY ALL DIMENSIONS ON SITE PRIOR TO
 COMMENCEMENT OF WORK OR PREPARATION OF SHOP DRAWINGS.
 DO NOT SCALE THIS DRAWING

ISSUE	DATE	FOR
A	05/03/21	SSDA

STRUCTURAL AND CIVIL ENGINEER

MEINHARDT BONACCI

+61 2 8247 8400

BUILDING SERVICES

STANTEC

+61 2 9493 9700

ESD & GREEN STAR

NDY

+61 2 9928 6800

LANDSCAPE ARCHITECT

TURF DESIGN

+61 2 8394 9990

BCA AND DDA

PHILLIP CHUN

+61 2 9412 23202

PROJECT MANAGER

COLLIERS INTERNATIONAL

+61 2 9257 0222

END USER

CITY OF SYDNEY

+61 2 9265 9333

END USER

NSW DEPARTMENT OF EDUCATION

1300 679 332

CLIENT

SCHOOL INFRASTRUCTURE NSW

PROJECT

GREEN SQUARE INTEGRATED

COMMUNITY FACILITY AND SCHOOL

ZETLAND AVENUE, GREEN SQUARE 2017

BVN PROJECT NUMBER

1908014.000

DRAWING KEY

ZETLAND AVENUE

PORTMAN STREET

JOYNTON AVENUE

EXISTING EARLY EDUCATION CENTRE

BOUNDARY

TRUE NORTH

PROJECT NORTH

GRAPHIC SCALE

SCALE

0 4000 10000

1:200@A1

STATUS

SSDA

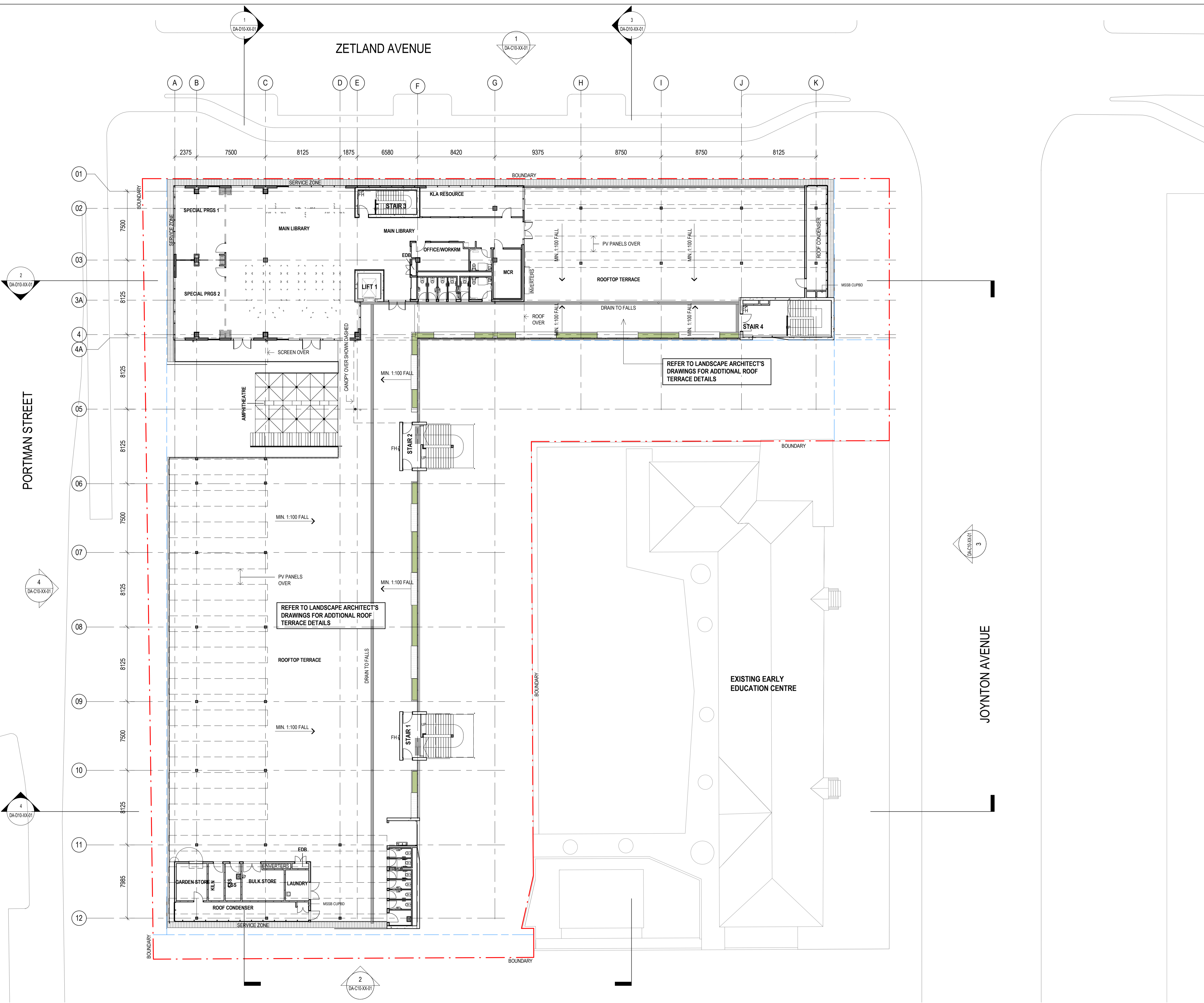
DRAWING

GA PLAN - LEVEL 03

ISSUE

DA-B10-03-00

A



INTELLECTUAL PROPERTY
COPYRIGHT BVN ARCHITECTURE PTY LIMITED. UNLESS OTHERWISE
AGREED IN WRITING ALL RIGHTS TO THIS DOCUMENT ARE SUBJECT TO
PAYMENT IN FULL OF ALL BVN CHARGES. THIS DOCUMENT MAY ONLY
BE USED FOR THE EXPRESS PURPOSE AND PROJECT FOR WHICH IT
HAS BEEN CREATED AND DELIVERED. AS NOTIFIED IN WRITING BY
BVN AND THIS DOCUMENT MAY NOT BE OTHERWISE USED OR COPIED.
ANY UNAUTHORIZED USE OF THIS DOCUMENT IS AT THE USER'S SOLE
RISK AND WITHOUT LIMITING RIGHTS THE USER RELEASES AND
INDEMNIFIES BVN FROM AND AGAINST ALL LOSS SO ARISING.

NOTE
CONTRACTOR TO CHECK AND VERIFY ALL DIMENSIONS ON SITE PRIOR
TO COMMENCEMENT OF WORK OR PREPARATION OF SHOP DRAWINGS.
DO NOT SCALE THIS DRAWING

ISSUE	DATE	FOR
A	05/03/21	SSDA

STRUCTURAL AND CIVIL ENGINEER

MEINHARDT BONACCI

+61 2 8247 8400

BUILDING SERVICES

STANTEC

+61 2 9493 9700

ESD & GREEN STAR

NDY

+61 2 9928 6800

LANDSCAPE ARCHITECT

TURF DESIGN

+61 2 8394 9990

BCA AND DDA

PHILLIP CHUN

+61 2 9412 23202

PROJECT MANAGER

COLLIERS INTERNATIONAL

+61 2 9257 0222

END USER

CITY OF SYDNEY

+61 2 9265 9333

END USER

NSW DEPARTMENT OF EDUCATION

1300 679 332

CLIENT

SCHOOL INFRASTRUCTURE NSW

PROJECT

GREEN SQUARE INTEGRATED

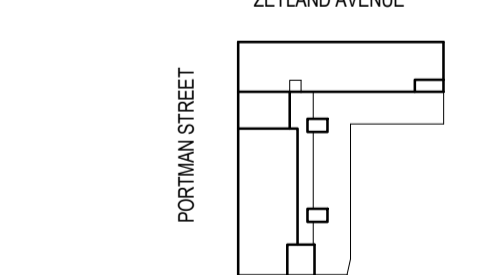
COMMUNITY FACILITY AND SCHOOL

ZETLAND AVENUE, GREEN SQUARE 2017

BVN PROJECT NUMBER

1908014.000

DRAWING KEY ZETLAND AVENUE



TRUE NORTH PROJECT NORTH



GRAPHIC SCALE



SCALE

1:200@A1

STATUS

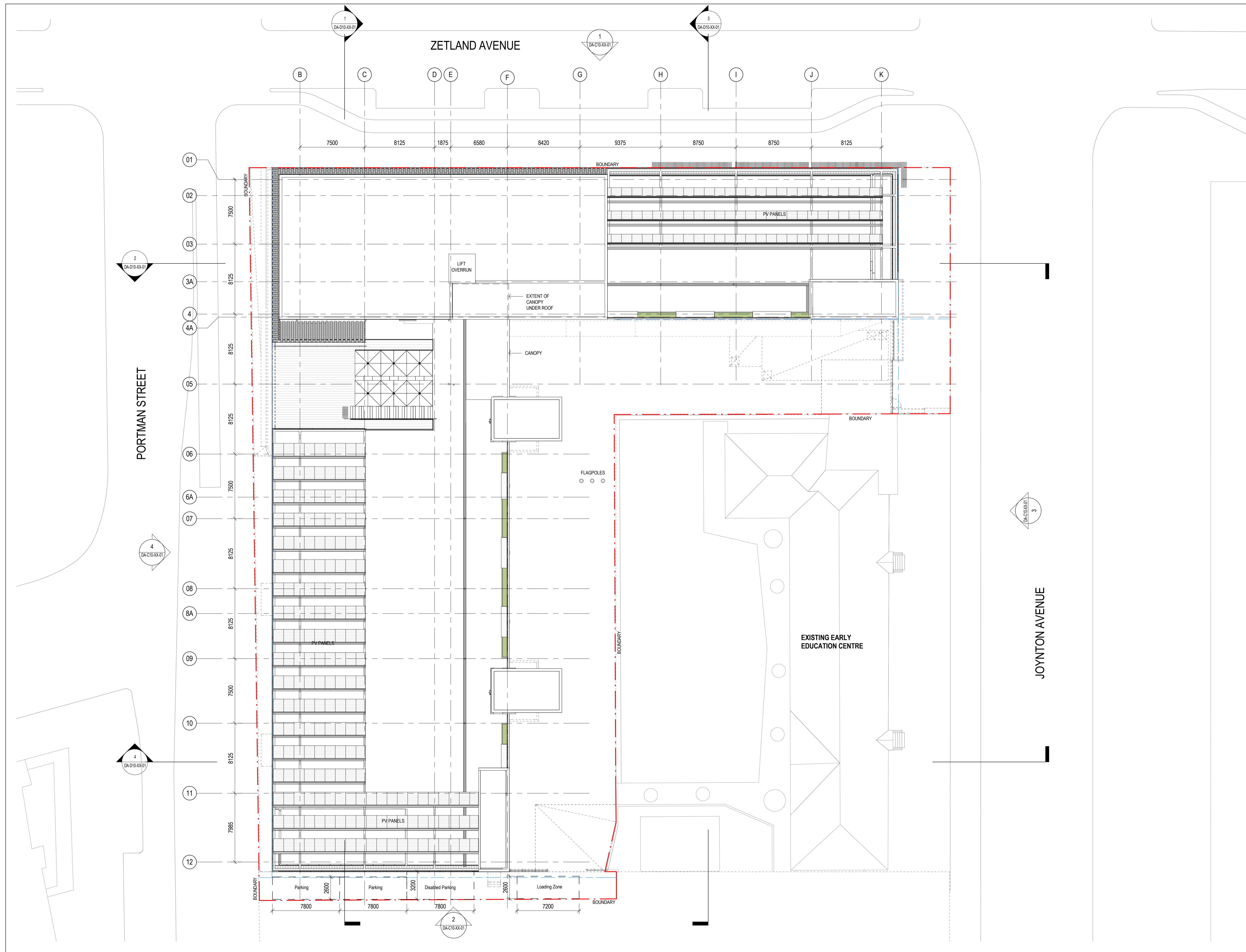
SCHEMATIC DESIGN

DRAWING

GA PLAN - ROOF PLAN

ISSUE

AR-DA-B10-04-00 A



INTELLECTUAL PROPERTY
 COPYRIGHT BVN ARCHITECTURE PTY LIMITED. UNLESS OTHERWISE
 AGREED IN WRITING ALL RIGHTS TO THIS DOCUMENT ARE SUBJECT TO
 PAYMENT IN FULL OF ALL BVN CHARGES. THIS DOCUMENT MAY ONLY
 BE USED FOR THE EXPRESS PURPOSE AND PROJECT FOR WHICH IT
 HAS BEEN CREATED AND DELIVERED. AS NOTIFIED IN WRITING BY
 BVN AND THIS DOCUMENT MAY NOT BE OTHERWISE USED. DA-COP-01
 ANY UNAUTHORIZED USE OF THIS DOCUMENT IS AT THE USER'S SOLE
 RISK AND WITHOUT LIMITING BVN'S RIGHTS THE USER RELEASES AND
 INDEMNIFIES BVN FROM AND AGAINST ALL LOSS SO ARISING.

NOTE
 CONTRACTOR TO CHECK AND VERIFY ALL DIMENSIONS ON SITE PRIOR
 TO COMMENCEMENT OF WORK OR PREPARATION OF SHOP DRAWINGS.
 DO NOT SCALE THIS DRAWING

ISSUE	DATE	FOR
A	05/03/21	SSDA

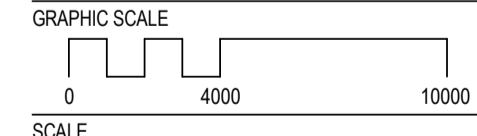
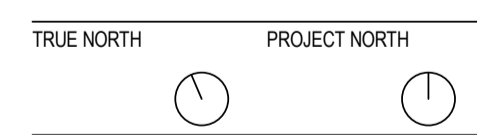
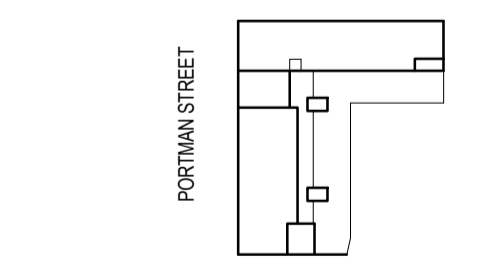
STRUCTURAL AND CIVIL ENGINEER
MEINHARDT BONACCI
 +61 2 8247 8400
 BUILDING SERVICES
STANTEC
 +61 2 9493 9700
 ESD & GREEN STAR
NDY
 +61 2 9928 6800
 LANDSCAPE ARCHITECT
TURF DESIGN
 +61 2 8394 9990
 BCA AND DDA
PHILLIP CHUN
 +61 2 9412 23202
 PROJECT MANAGER
COLLIERS INTERNATIONAL
 +61 2 9257 0222
 END USER
CITY OF SYDNEY
 +61 2 9265 9333
 END USER
NSW DEPARTMENT OF EDUCATION
 1300 679 332
 CLIENT

SCHOOL INFRASTRUCTURE NSW
 PROJECT

GREEN SQUARE INTEGRATED
 COMMUNITY FACILITY AND SCHOOL
 ZETLAND AVENUE, GREEN SQUARE 2017
 BVN PROJECT NUMBER

1908014.000

DRAWING KEY ZETLAND AVENUE



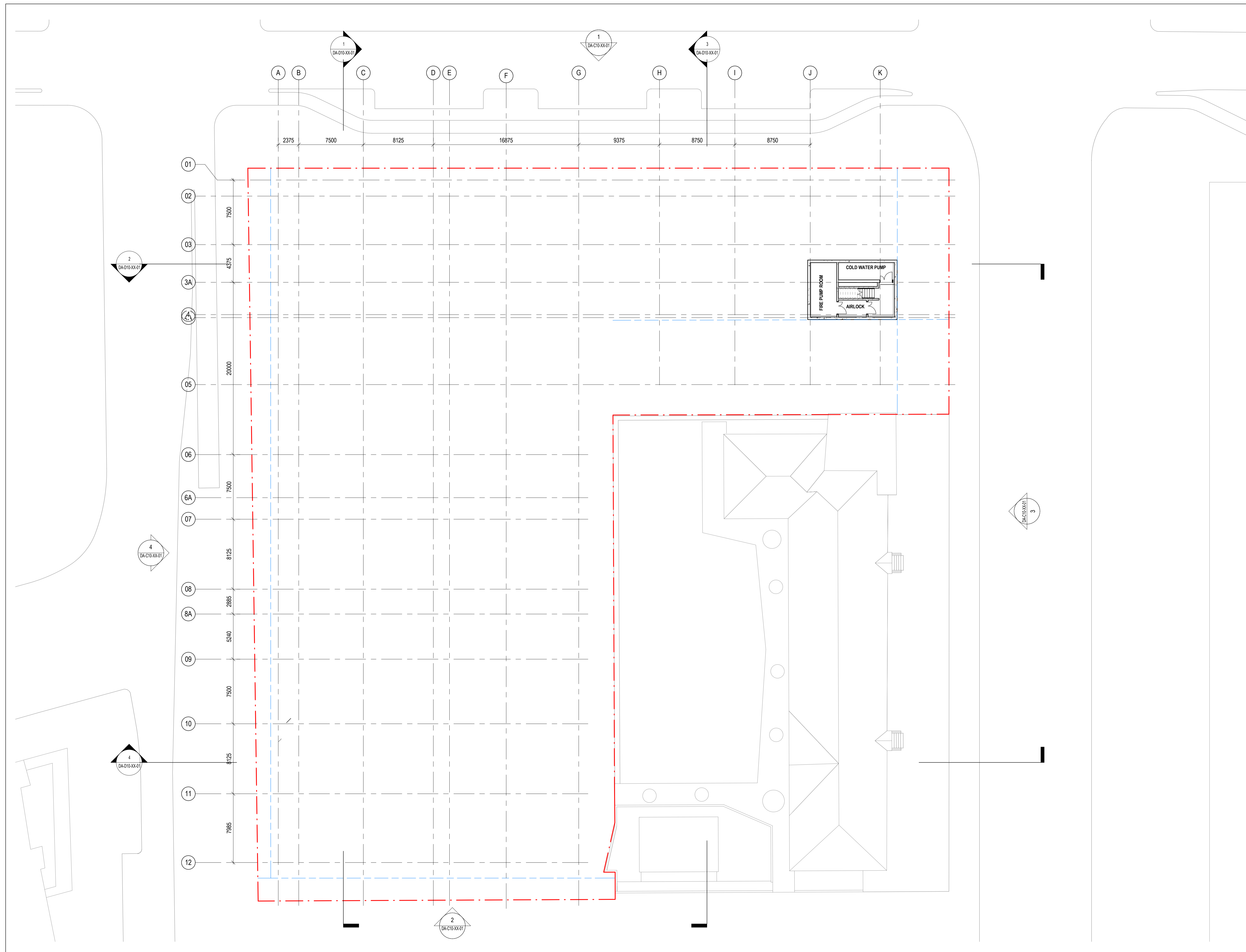
1:200@A1
 STATUS

SCHEMATIC DESIGN
 DRAWING

GA PLAN - BASEMENT

ISSUE
A

AR-DA-B10-B0-00



ISSUE	DATE	FOR
A	05/03/21	SSDA

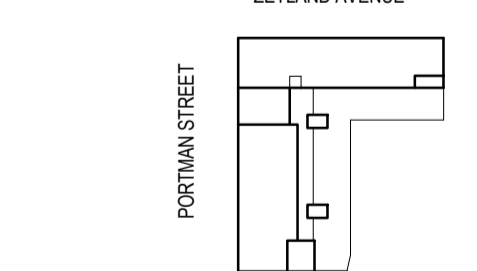
STRUCTURAL AND CIVIL ENGINEER
MEINHARDT BONACCI
 +61 2 8247 8400
 BUILDING SERVICES
STANTEC
 +61 2 9493 9700
 ESD & GREEN STAR
NDY
 +61 2 9928 6800
 LANDSCAPE ARCHITECT
TURF DESIGN
 +61 2 8394 9990
 BCA AND DDA
PHILLIP CHUN
 +61 2 9412 23202
 PROJECT MANAGER
COLLIERS INTERNATIONAL
 +61 2 9257 0222
 END USER
CITY OF SYDNEY
 +61 2 9265 9333
 END USER
NSW DEPARTMENT OF EDUCATION
 1300 679 332
 CLIENT

SCHOOL INFRASTRUCTURE NSW
 PROJECT

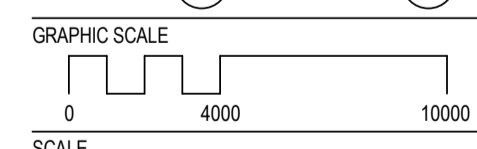
**GREEN SQUARE INTEGRATED
 COMMUNITY FACILITY AND SCHOOL**
 ZETLAND AVENUE, GREEN SQUARE 2017
 B.V.N. PROJECT NUMBER

1908014.000

DRAWING KEY ZETLAND AVENUE



TRUE NORTH PROJECT NORTH



SCALE

1:200@A1

STATUS

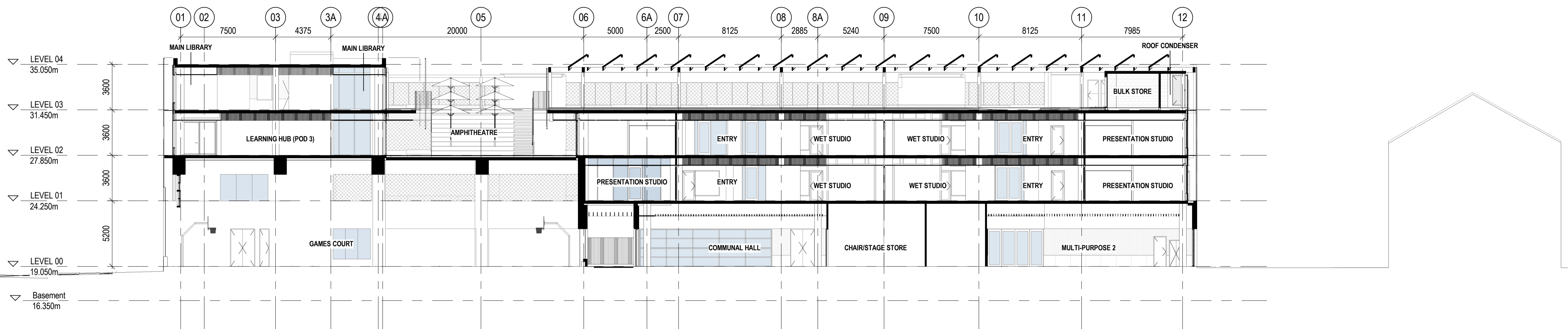
SSDA

DRAWING

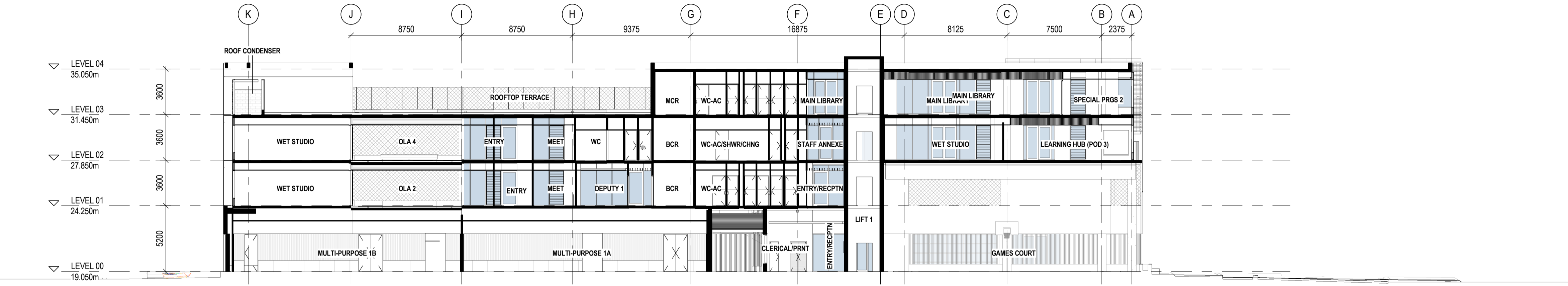
SECTIONS 01

DA-D10-XX-01

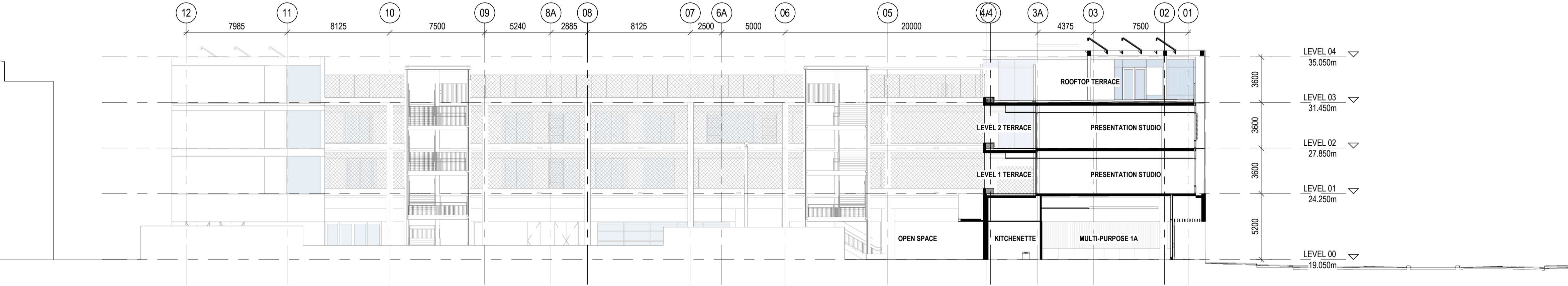
ISSUE A



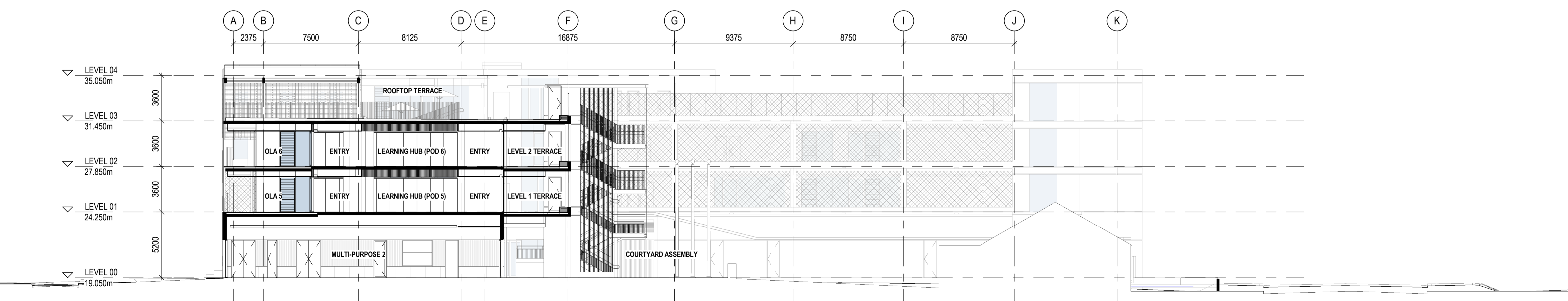
1 SECTION 01
 1:200



2 SECTION 02
 1:200

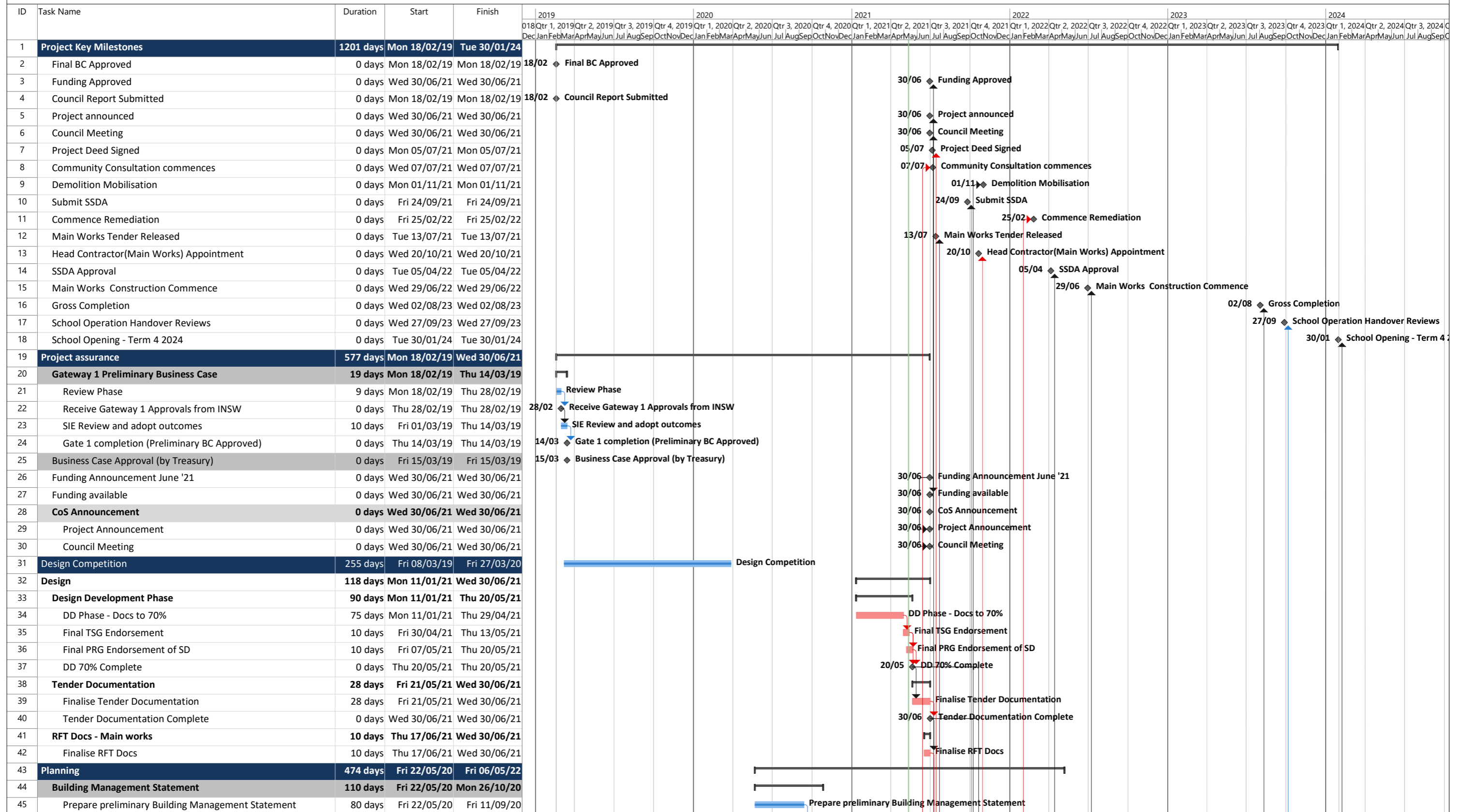


3 SECTION 03
 1:200



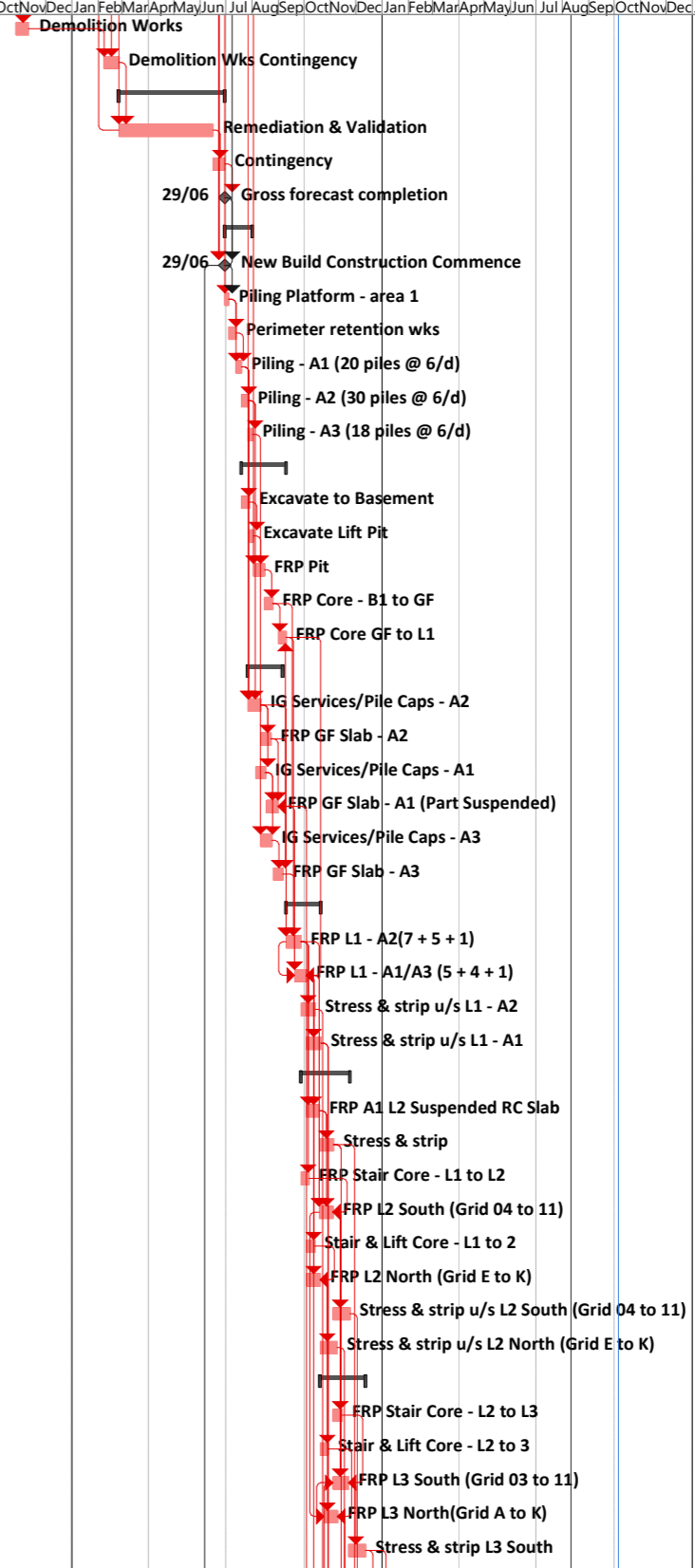
4 SECTION 04
 1:200

Appendix B GSICFS Master Program



Project: 201102 Green Square ICF Date: Wed 12/05/21	Task		Summary		Inactive Summary		Manual Summary		External Milestone	◆	Progress	
	Critical Task		Project Summary		Manual Task		Start-only		Deadline	↓	Manual Progress	
	Split		Inactive Task		Duration-only		Finish-only		Critical			
	Milestone	◆	Inactive Milestone	◆	Manual Summary Rollup		External Tasks		Critical Split			

ID	Task Name	Duration	Start	Finish	2019			2020			2021			2022			2023			2024		
					Qtr 1	Qtr 2	Qtr 3	Qtr 1	Qtr 2	Qtr 3	Qtr 1	Qtr 2	Qtr 3	Qtr 1	Qtr 2	Qtr 3	Qtr 1	Qtr 2	Qtr 3	Qtr 1	Qtr 2	Qtr 3
134	Demolition Works	10 days	Wed 27/10/21	Wed 10/11/21																		
135	Demolition Wks Contingency	13 days	Tue 08/02/22	Thu 24/02/22																		
136	Site Remediation Works	80 days	Fri 25/02/22	Wed 29/06/22																		
137	Remediation & Validation	70 days	Fri 25/02/22	Wed 15/06/22																		
138	Contingency	10 days	Thu 16/06/22	Wed 29/06/22																		
139	Gross forecast completion	0 days	Wed 29/06/22	Wed 29/06/22																		
140	Substructure	25 days	Wed 29/06/22	Mon 01/08/22																		
141	New Build Construction Commence	0 days	Wed 29/06/22	Wed 29/06/22																		
142	Piling Platform - area 1	3 days	Thu 30/06/22	Mon 04/07/22																		
143	Perimeter retention wks	7 days	Mon 04/07/22	Tue 12/07/22																		
144	Piling - A1 (20 piles @ 6/d)	5 days	Wed 13/07/22	Tue 19/07/22																		
145	Piling - A2 (30 piles @ 6/d)	6 days	Tue 19/07/22	Tue 26/07/22																		
146	Piling - A3 (18 piles @ 6/d)	4 days	Wed 27/07/22	Mon 01/08/22																		
147	Basement	42 days	Tue 19/07/22	Fri 09/09/22																		
148	Excavate to Basement	8 days	Tue 19/07/22	Thu 28/07/22																		
149	Excavate Lift Pit	3 days	Fri 29/07/22	Tue 02/08/22																		
150	FRP Pit	10 days	Tue 02/08/22	Mon 15/08/22																		
151	FRP Core - B1 to GF	8 days	Mon 15/08/22	Wed 24/08/22																		
152	FRP Core GF to L1	8 days	Wed 31/08/22	Fri 09/09/22																		
153	GF Structure	32 days	Wed 27/07/22	Mon 05/09/22																		
154	IG Services/Pile Caps - A2	12 days	Wed 27/07/22	Wed 10/08/22																		
155	FRP GF Slab - A2	9 days	Thu 11/08/22	Mon 22/08/22																		
156	IG Services/Pile Caps - A1	8 days	Fri 05/08/22	Tue 16/08/22																		
157	FRP GF Slab - A1 (Part Suspended)	11 days	Wed 17/08/22	Wed 31/08/22																		
158	IG Services/Pile Caps - A3	10 days	Thu 11/08/22	Tue 23/08/22																		
159	FRP GF Slab - A3	8 days	Fri 26/08/22	Mon 05/09/22																		
160	L1 Structure	32 days	Sat 10/09/22	Thu 20/10/22																		
161	FRP L1 - A2(7 + 5 + 1)	13 days	Sat 10/09/22	Tue 27/09/22																		
162	FRP L1 - A1/A3 (5 + 4 + 1)	11 days	Tue 20/09/22	Mon 03/10/22																		
163	Stress & strip u/s L1 - A2	14 days	Tue 27/09/22	Fri 14/10/22																		
164	Stress & strip u/s L1 - A1	14 days	Tue 04/10/22	Thu 20/10/22																		
165	L2 Structure	45.5 days	Tue 27/09/22	Wed 23/11/22																		
166	FRP A1 L2 Suspended RC Slab	12 days	Tue 04/10/22	Tue 18/10/22																		
167	Stress & strip	14 days	Wed 19/10/22	Fri 04/11/22																		
168	FRP Stair Core - L1 to L2	8 days	Tue 27/09/22	Thu 06/10/22																		
169	FRP L2 South (Grid 04 to 11)	13 days	Wed 19/10/22	Thu 03/11/22																		
170	Stair & Lift Core - L1 to 2	8 days	Tue 04/10/22	Thu 13/10/22																		
171	FRP L2 North (Grid E to K)	13 days	Tue 04/10/22	Wed 19/10/22																		
172	Stress & strip u/s L2 South (Grid 04 to 11)	14 days	Fri 04/11/22	Wed 23/11/22																		
173	Stress & strip u/s L2 North (Grid E to K)	14 days	Thu 20/10/22	Tue 08/11/22																		
174	L3 Structure	41.5 days	Thu 20/10/22	Mon 12/12/22																		
175	FRP Stair Core - L2 to L3	8 days	Fri 04/11/22	Mon 14/11/22																		
176	Stair & Lift Core - L2 to 3	8 days	Thu 20/10/22	Sat 29/10/22																		
177	FRP L3 South (Grid 03 to 11)	14 days	Fri 04/11/22	Tue 22/11/22																		
178	FRP L3 North(Grid A to K)	13 days	Mon 24/10/22	Wed 09/11/22																		
179	Stress & strip L3 South	14 days	Tue 22/11/22	Mon 12/12/22																		



Project: 201102 Green Square ICF Date: Wed 12/05/21	Task		Summary		Inactive Summary		Manual Summary		External Milestone		Progress	
	Critical Task		Project Summary		Manual Task		Start-only		Deadline		Manual Progress	
	Split		Inactive Task		Duration-only		Finish-only		Critical			
	Milestone		Inactive Milestone		Manual Summary Rollup		External Tasks		Critical Split			



© JBS&G

This document is and shall remain the property of JBS&G. The document may only be used for the purposes for which it was commissioned and in accordance with the Terms of Engagement for the commission. Unauthorised use of this document in any form whatsoever is prohibited

Document Distribution

Rev No.	Copies	Recipient	Date
A	1 x electronic copy	Mark Thebridge Colliers International Pty Ltd Via email: Mark.Thebridge@colliers.com	12/03/2021
0	1 x electronic copy	Andy Watts SINSW Via email: Andrew.Watts32@det.nsw.edu.au	6/05/2021
1	1 x electronic copy	Andy Watts SINSW Via email: Andrew.Watts32@det.nsw.edu.au	16/08/2021

Document Status

Rev No.	Author	Reviewer	Approved for Issue		
		Name	Name	Signature	Date
A	Sahani Gunatunge	Joanne Rosner	Draft for client review		12/03/2021
0	Sahani Gunatunge	Joanne Rosner	Joanne Rosner		6/05/2021
1	Sahani Gunatunge	Joanne Rosner	Joanne Rosner		16/08/2021

