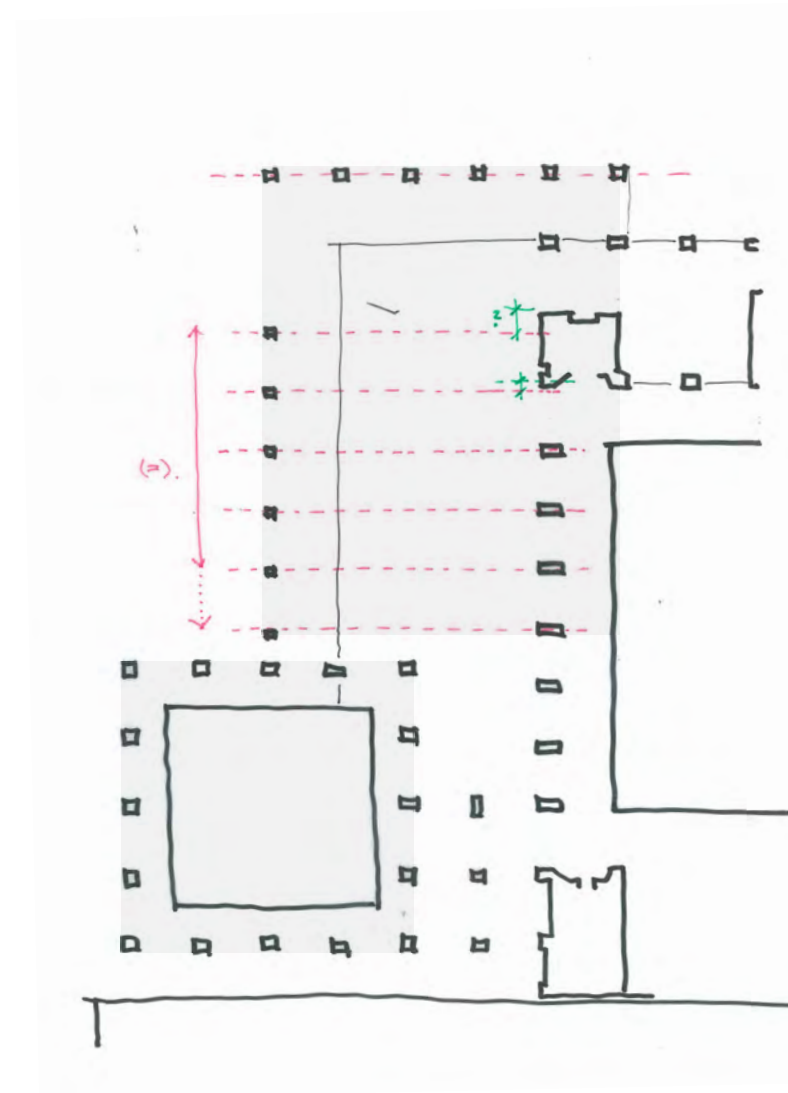


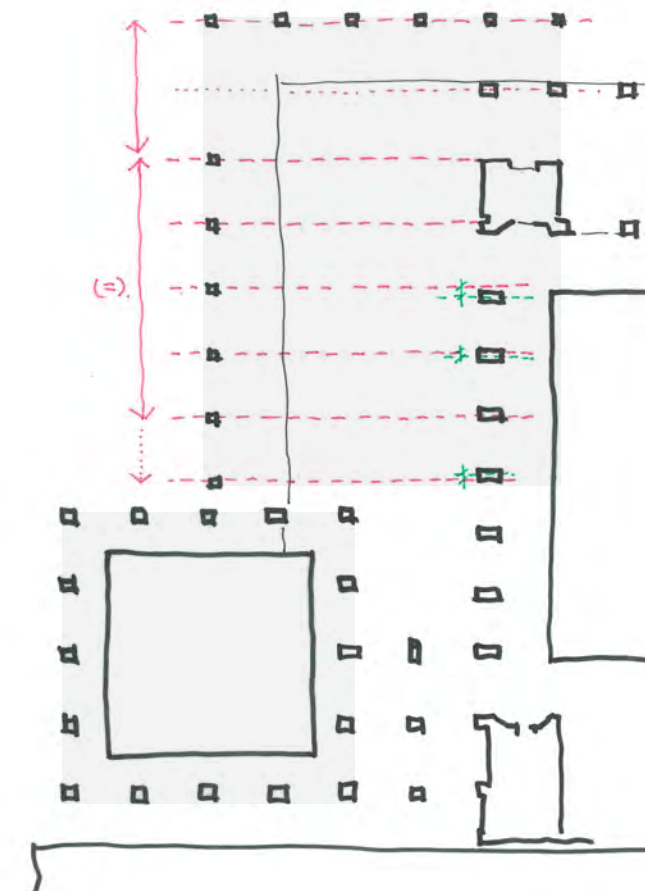
1 Delete column to emphasize entry

Column spacing to facade remains irregular



3 Uniform columns at facade
Set-out in line with existing columns

*Large entry bay difficult to resolve in ceiling
Eccentric beam near lift core*



4 Uniform columns at facade
Set-out eccentric to existing columns

Eccentric beams require transfer beam

Option 3

- Reposition and reduction of columns to create large bay to entry
- Columns aligned with existing

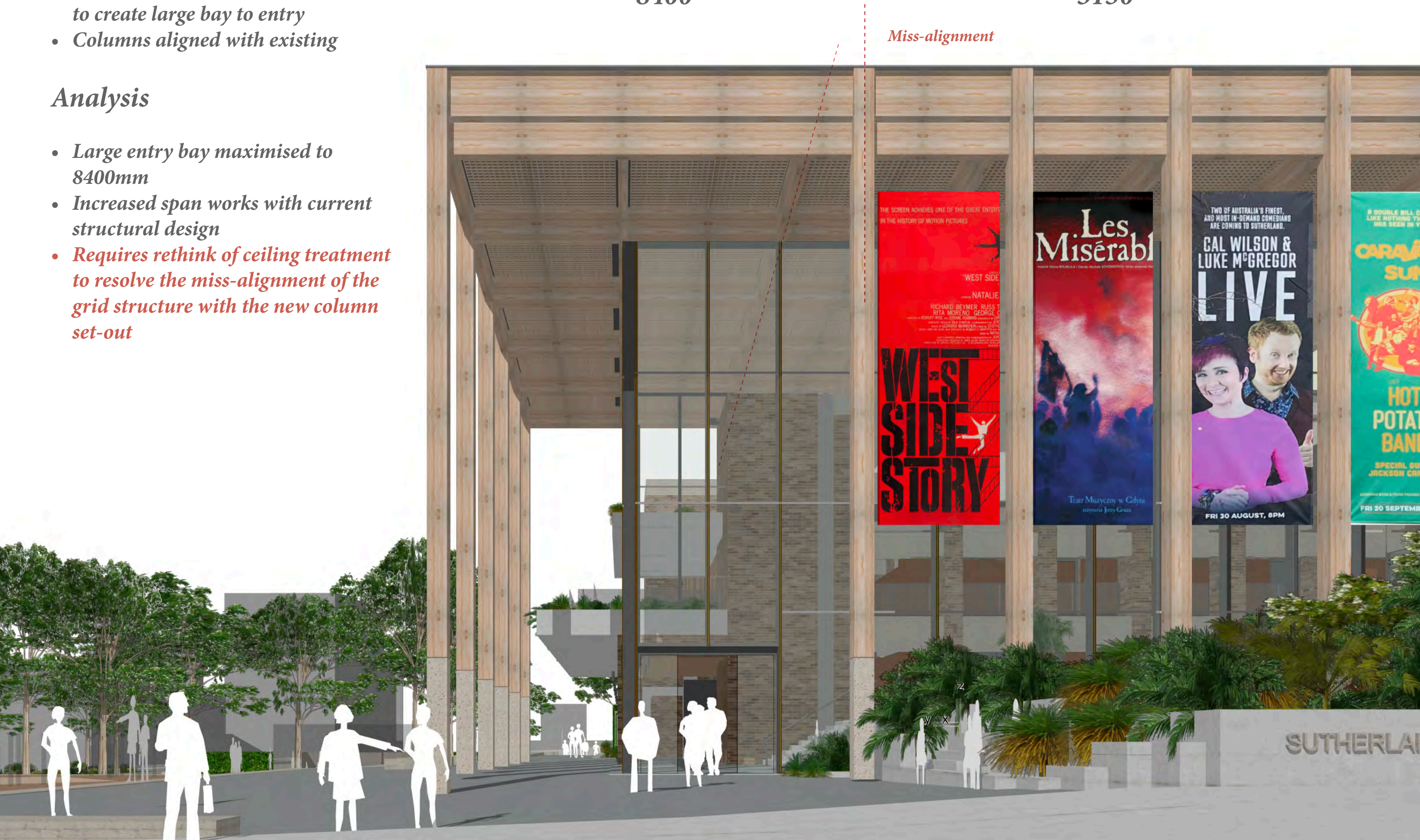
Analysis

- Large entry bay maximised to 8400mm
- Increased span works with current structural design
- Requires rethink of ceiling treatment to resolve the miss-alignment of the grid structure with the new column set-out

8400

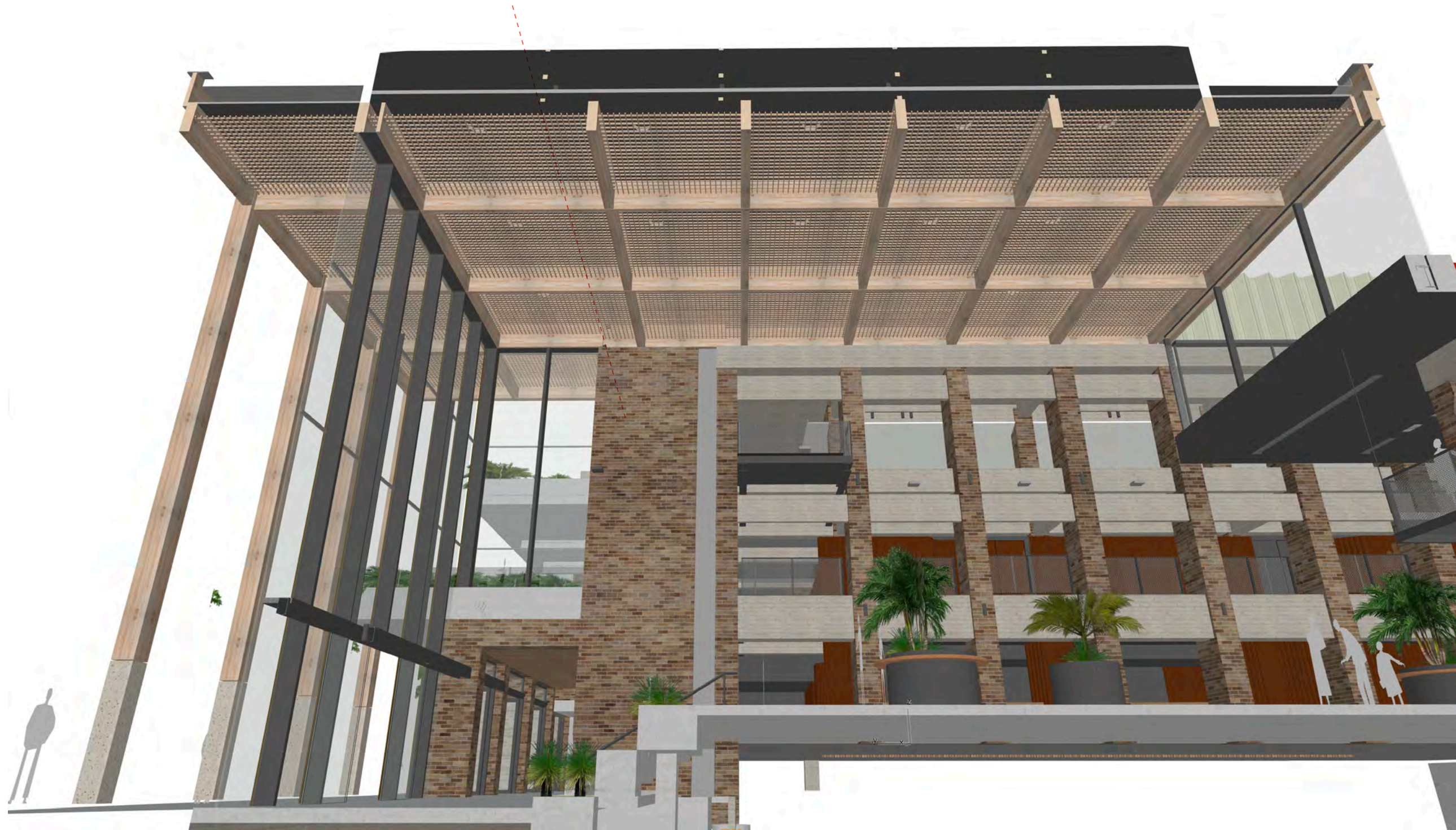
3150

Miss-alignment



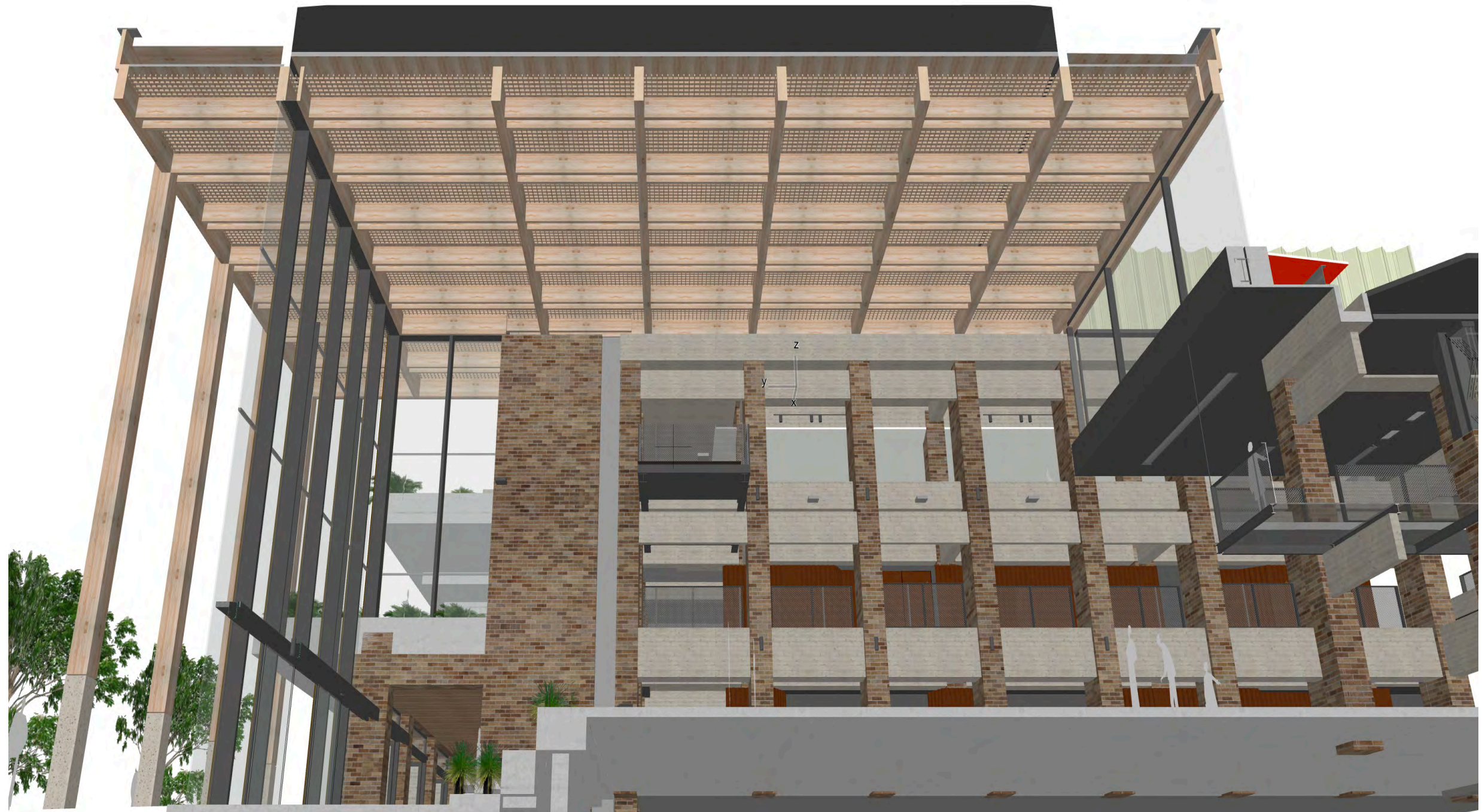
Option 3

- *Alignment of beam and column leads to misalignment at lift core*
- *Large variation in bay size*



Option 3A

- *Additional beams in direction of secondary structure (north-south)*
- *Beams can be reduced in width and depth but additional connections may increase cost*
- *Revised estimate required to confirm cost neutral*
- *Miss-alignment at lift remains visible*



Option 4

CHROFI | NBR ARCHITECTURE.

- Large entry bay
- Even columns and banners
- Gridded ceiling concept remains

7360

3415



- Columns & beams miss-aligns with existing internal facade



*Alignment
with lifts haft is important
as viewed from entry*

APPENDIX E: Design Integrity Panel Terms of Reference

Sutherland Entertainment Centre Major Refurbishment

Design Integrity Panel Terms of Reference

1. Purpose

The role of the Design Integrity Panel (the DIP) is to provide independent, expert and impartial design advice as part of Sutherland Shire Council's proposed Design Excellence Strategy prepared in response to the Planning Secretary's Environment Assessment Requirements and in consultation with Government Architect NSW to ensure that design integrity and the outcomes envisaged by Council, the community, stakeholders and the Design Review Panel are maintained through the process.

2. Scope of Review

During review sessions, the project Architect will present material displaying how the design has progressed at key milestones and the Panel will review, providing independent and impartial advice as to the design quality generally and whether the integrity of the design and design intent has been maintained from the competition phase.

3. Panel Members

Council will retain all members from the Design Review Panel engaged at the competition phase in the form of the Design Integrity Panel. The panel members are as follows;

- **Darlene van der Breggen** (GANSW, panel chair) Darlene is an accomplished architect and urban designer and is Strategic Design Advisor to the Government Architect NSW.
- **Colin Sargent** (Senior Development Manager, Central Precinct Renewal, Transport NSW, panel member) Colin is an expert in major project delivery. He is a former Director, Planning and Design for the Barangaroo Delivery Authority and has over 18 years' experience in design and delivery management roles across the public and private sectors.
- **Craig Gamble** (Setting Line, Theatre Consultant, panel member) Craig is a theatre design consultant with over 35 years national and international experience working in, designing and building theatres, museums, galleries and other cultural and creative spaces.

4. Role of the Chair

The Chair is responsible for clarifying and summarising the Panel's comments all issues and subsequently providing advice, informed by the Panel's expertise, to the consent authority and the proponent team. As the Government Architect's nominee, responsibility for final advice and recommendations rests with the Chair.

5. Meetings

The DIP will convene to review the design prior to lodgement of the State Significant Development Application, prior to tenders being called for the design finalisation and construction of the main works and prior to any substantive design change to ensure the design integrity is maintained.

Each session will comprise

- a briefing to panel members by the Project Managers,
- presentation from the project Architect presenting the design as it has progressed,
- panel questions,
- panel review,
- chair summary of advice and
- panel debrief

Observations and outcomes, as endorsed by the Chair, will be recorded by a Council representative of and be distributed to Panel members for their review and subsequent endorsement.

6. Session Attendance

The project architect will present the design material to the Panel. Key stakeholders will also be invited to attend the review session as observers and may be invited to brief the panel on specific issues relating to their respective areas.

7. Confidentiality

All information relating to any proposal undertaking Design Review is communicated to Panel members and review attendees in the strictest confidence. Upon lodgement of an application, the Government Architect's final recommendations and advice which have been informed by the NSW SDRP will be made publicly available during the assessment exhibition period.



Sutherland Shire Council

4 Eton Street, Sutherland NSW 2232

Locked Bag 17, Sutherland NSW 1499

T 02 9710 0333 ssc@ssc.nsw.gov.au