

TRINITY GRAMMAR SCHOOL - THE RENEWAL PROJECT

SUMMER HILL, NSW

DRAWING SCHEDULE

DRAWING NO.	DRAWING TITLE
[REVISION]	
000[H]	COVER SHEET
100[H]	LANDSCAPE MASTERPLAN
101[H]	INDEX PLAN
200[H]	LANDSCAPE PLAN
201[H]	LANDSCAPE PLAN
202[H]	LANDSCAPE PLAN
203[H]	LANDSCAPE PLAN
204[H]	LANDSCAPE PLAN
205[H]	LANDSCAPE PLAN
206[H]	LANDSCAPE PLAN
207[H]	LANDSCAPE PLAN
601[H]	LANDSCAPE DETAILS

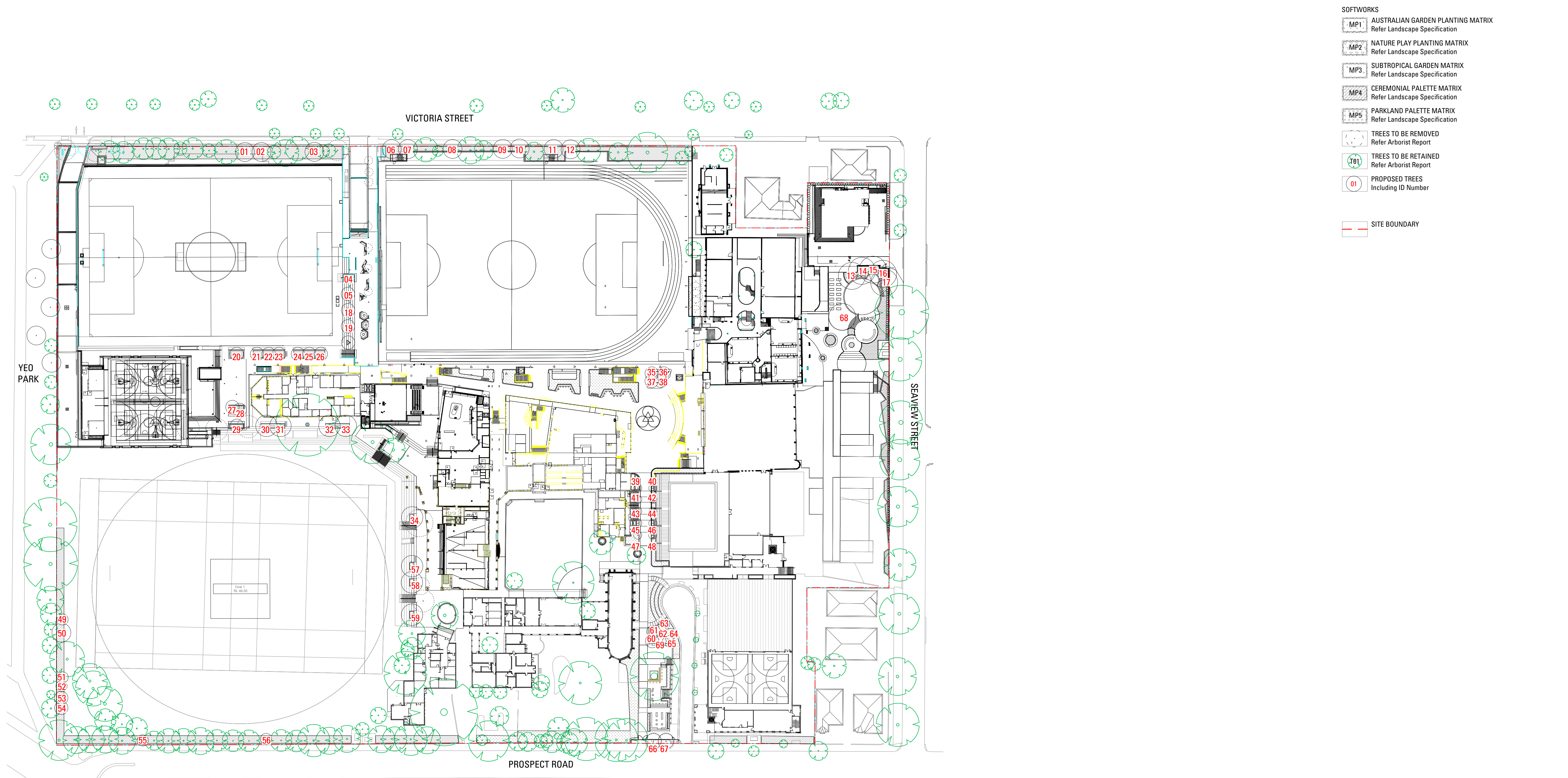
LOCATION PLAN

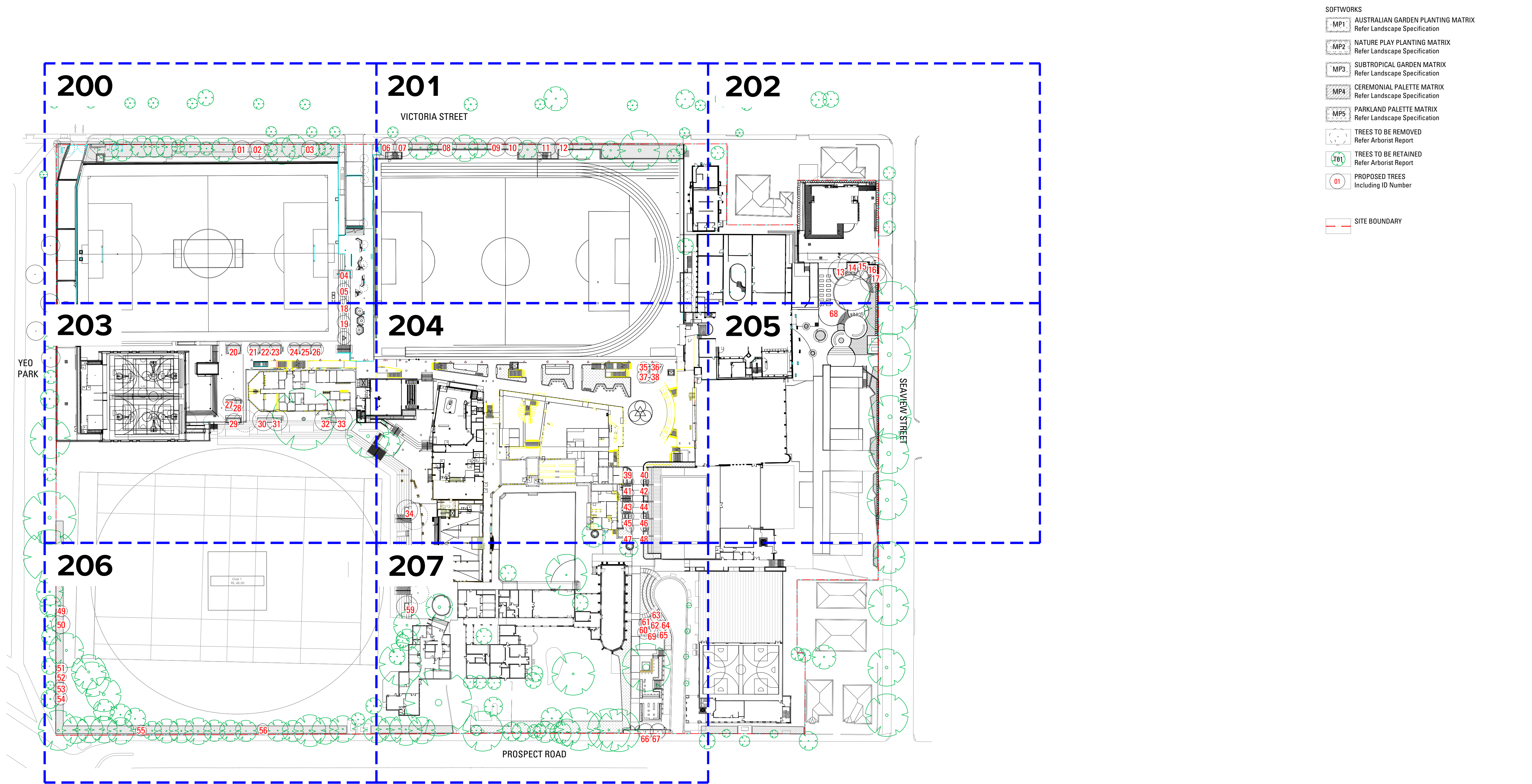
SCALE: NTS

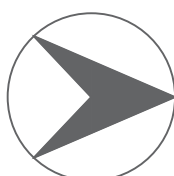
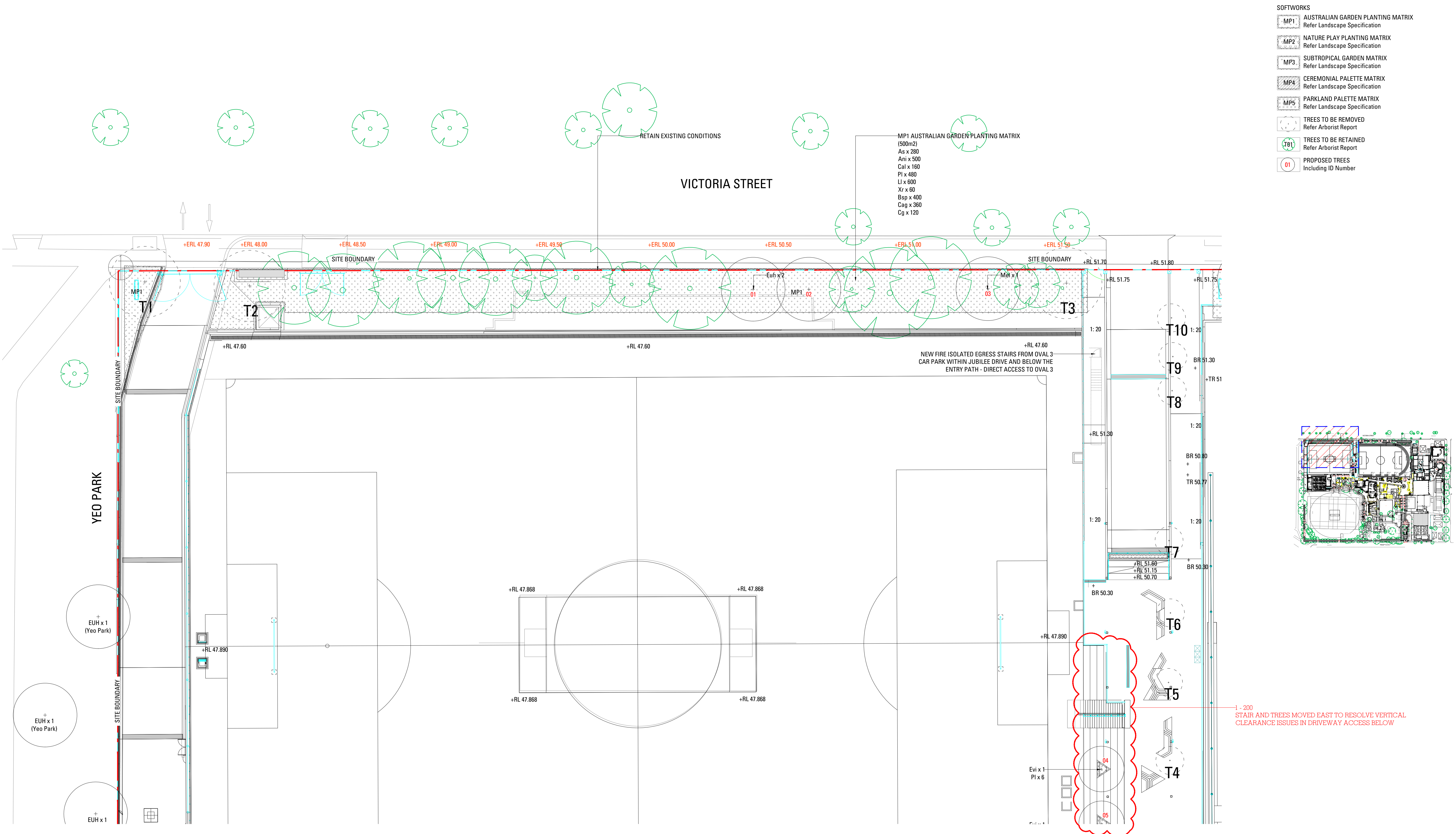


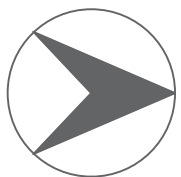
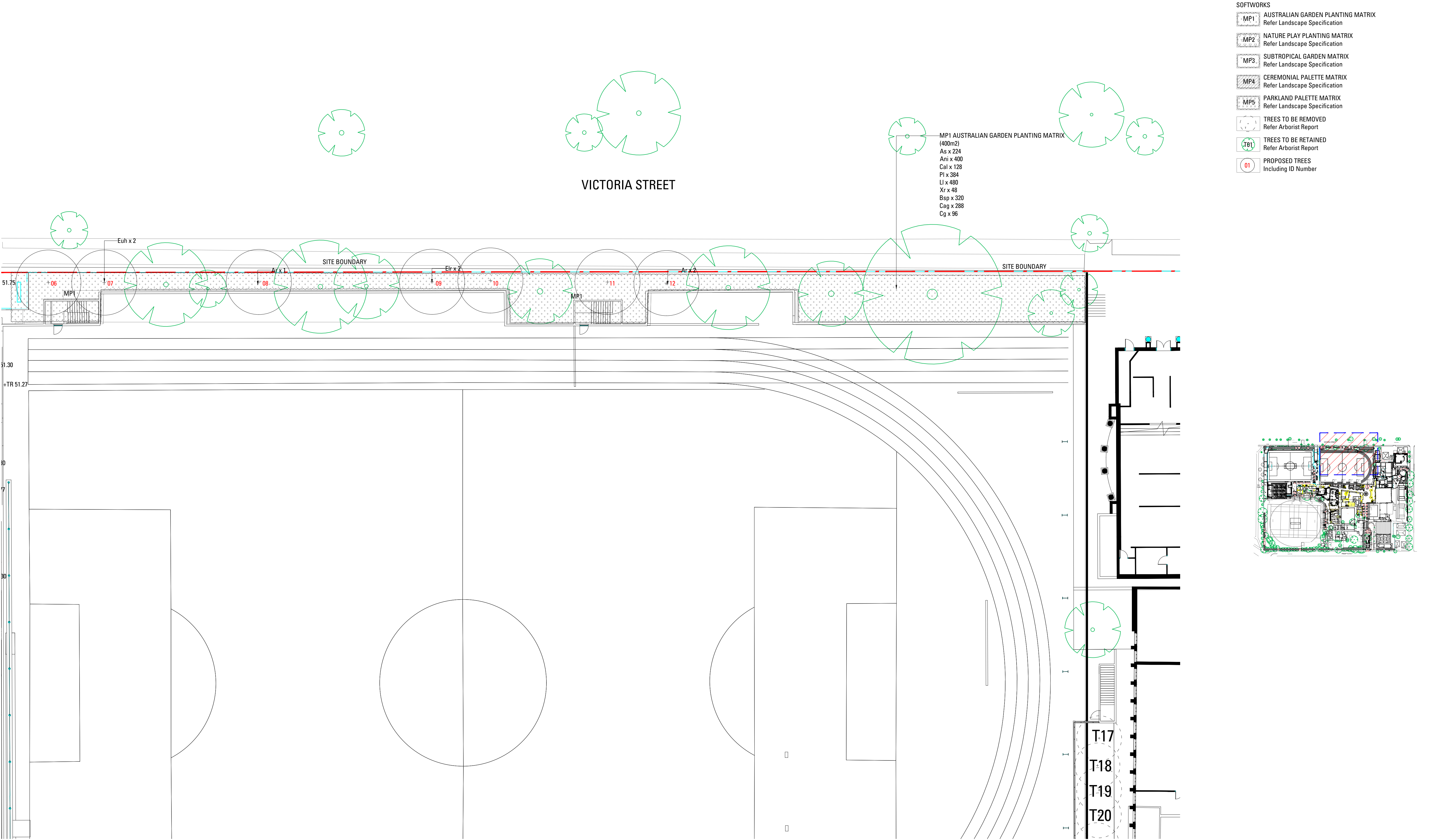
PLANTING SCHEDULE

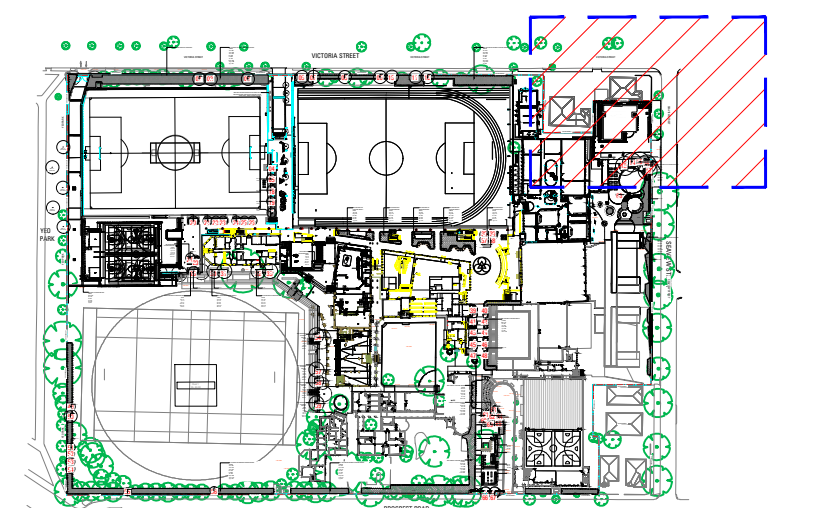
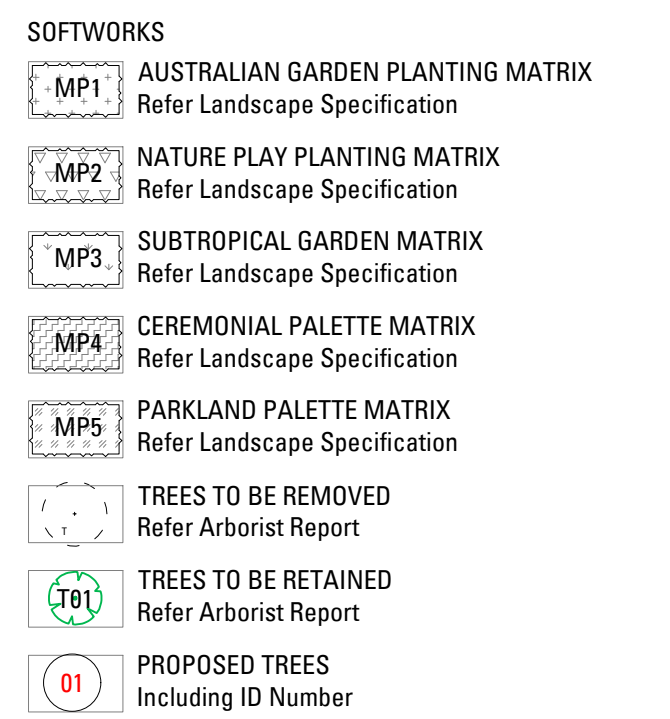
18-586 TRINITY GRAMMAR PLANT SCHEDULE - CAMPUS						
CODE	BOTANIC NAME	COMMON NAME	MATURE SIZE (h x w) (m)	PROPOSED POT SIZE	QUANTITY	TREE ID NUMBERS
TREES						
Ar	Agathis robusta	Smooth-bark kauri	30 x 10	400L	11	08,11,12,30,31,32,33,34,57,58,59
Apa	Acer palmatum	Japanese Maple	4 x 4	200L	1	69
Bi	Banksia integrifolia	Coast Banksia	15 x 6	200L	3	15,16,17
Ca	Cyathea australis	Rough Tree Fern	5 x 2	200L	4	35,36,37,38
Eci	Eucalyptus cinerea	Silver Shadow	12 x 8	200L	16	20,21,22,23,24,25,26,27,28,29,51,52,53,54,55,56
Euh	Eucalyptus haemastoma	Broad-leaved scribbly gum	15 x 6	100L	4	01,02,06,07
Elr	Eucalyptus leucokylon 'Rosea'	Red Flowering Yellow Gum	15 x 7	200L	2	09,10
Evi	Eucalyptus victrix	Snow Queen	8 x 4	200L	6	04,05,18,19,64,65
Mg	Magnolia grandiflora 'Little Gem'	Dwarf Magnolia	8 x 5	200L	10	39,40,41,42,43,44,45,46,47,48
Mal	Malalauca leucodendra	Weeping Paperbark	30 x 20	400L	3	03,13,14
Li	Lagerstroemia indica	Crape Myrtle	6 x 4	200L	4	49,50,60,61
Ti	Tristaniaopsis 'Luscious'	Luscious Water Gum	10 x 5	200L	5	62,63,66,67,68
SUBTOTAL					69	
SHRUBS						
Asm	Acronesia smithii 'minor'	Dwarf Lilly Pilly	3 x 2	45L	178	
Cal	Correa alba	White Correa	1.5 x 1.5	45L	52	
Def	Dichondra repens 'Silver Falls'	Kidney Weed	0.2 x spreading	150mm	32	
Mp	Myoporum parvifolium 'Yareena'	Yareena	0.5 x spreading	150mm	18	
Pl	Poa labillardierei	Common Tussock-grass	1.2 x 1	300 mm	24	
Vh	Viola hederacea	Native Violet	0.2 x 0.5	150mm	80	
MP1 - AUSTRALIAN GARDEN PLANTING MATRIX					QUANTITY/25M2	TOTAL QUANTITY
As	Adenanthos sericeus	Woolly Bush	5 x 1.5	45L	14	882
Ani	Anigozanthos	Kangaroo Paw	1 x 1	300 mm	25	1575
Cal	Correa alba	White Correa	1.5 x 1.5	45L	8	504
Pl	Poa labillardierei	Common Tussock-grass	1.2 x 1	300 mm	24	1512
Lj	Lamandra longifolia	Spriny Headed Mat Rush	1 x 1	150mm	30	1680
Xt	Xanthorrhoea resinosa	Grass Tree	Varies x 1.5	45L	3	189
Bsp	Banksia spinulosa 'Birthday Candles'	Giant Candles Banksia	0.5 x 1	150mm	20	1260
Cag	Casuarina glauca	Cousin It	0.2 x 2	300 mm	18	1134
Cg	Carpobrotus glaucescens	Pig Face	0.25 x spreading	150mm	6	378
MP2 - NATURE PLAY PLANTING MATRIX						
As	Adenanthos sericeus	Woolly Bush	5 x 1.5	45L	14	182
Ani	Anigozanthos	Kangaroo Paw	1 x 1	300 mm	25	325
Cal	Correa alba	White Correa	1.5 x 1.5	45L	8	104
De	Dianella caerulea	Flax Lily	0.5 x 0.5	200 mm	24	312
Lj	Lamandra 'Tanika'	Mat Rush	0.6 x 0.6	300 mm	30	380
Pa	Pennisetum alopecuroides	Swamp Foxtail	1 x 1	300 mm	6	78
Cag	Casuarina glauca	Cousin It	0.2 x 2	300 mm	20	260
Csp	Chrysopsis halum semipapposum	Clustersed Everlasting	0.3 x spreading	150mm	12	156
Wff	Weinmannia frutescens 'Flat n Fruity'	Pig Face	0.3 x spreading	150mm	6	78
MP3 - SUBTROPICAL PLANTING MATRIX						
Aa	Asplenium australasicum	Birds Nest Fern	1.5 x 1.5	45L	18	180
Cag	Casuarina glauca	Cousin It	0.2 x 2	300 mm	15	150
De	Dianella caerulea	Flax Lily	0.5 x 0.5	300 mm	30	300
Ljr	Liriope muscari 'Just Right'	Lilyturf	0.45 x 0.45	300 mm	30	300
Hv	Hardenbergia violacea	Purple coral pea	1 x spreading	150mm	18	180
Tgr	Thunbergia grandiflora	Blue Thunbergia	0.3 x spreading	150mm	12	120
MP4 - FORMAL PLANTING MATRIX						
Bim	Baeckea imbricata	Heath Myrtle	1 x 1	300 mm	6	162
En	Erasmophila nivea	Emu Bush	2 x 2	300 mm	12	324
Ti	Teucrium fruticans	Germandet	1.5 x 1.5	200mm	24	648
Def	Dichondra repens 'Silver Falls'	Kidney Weed	0.2 x spreading	150mm	50	1350
Ljr	Liriope muscari 'Just Right'	Lilyturf	0.45 x 0.45	300 mm	24	648
Sr	Salvia rosmarinus	Rosemary	2 x 1	300 mm	18	486
Sch	Santolina Chamaecyparissus	Lavender Cotton	0.6 x .03	300 mm	30	810
MP5 - PARKLAND PLANTING MATRIX						
Cal	Correa alba	White Correa	1.5 x 1.5	45L	16	52
Ljr	Liriope muscari 'Just Right'	Lilyturf	0.45 x 0.45	300 mm	22	72
Pa	Pennisetum alopecuroides	Swamp Foxtail	1 x 1	300 mm	16	52
Hs	Hibbertia scandens	Snake Vine	0.15 x spreading	150mm	30	98
Sch	Santolina Chamaecyparissus	Lavender Cotton	0.6 x .03	300 mm	20	66
Hh	Hedera helix	Ivy	0.5 x Spreading	150mm	20	66
MP6 - MULTI PURPOSE PAVILION PLANTING MATRIX						
Def	Dichondra repens 'Silver Falls'	Kidney Weed	0.2 x spreading	150mm		100
Fp	Ficus pumila	Creeping Fig	0.25 x spreading	150mm		50
Pt	Pittosporum tobira	Dwarf Pittosporum	1.5 x 1	300 mm		55
Px	Philodendron 'Xanadu'	Xanadu	1 x 1	150mm		58
Rp	Rumex crispus	Creeping Rosemary	0.6 x 1	150mm		40
Tj	Trachelospermum jasminoides	Star Jasmine	0.25 x 1	150mm		65
18-586 TRINITY GRAMMAR PLANT SCHEDULE - YEO PARK						
CODE	BOTANIC NAME	COMMON NAME	MATURE SIZE (h x w) (m)	PROPOSED POT SIZE	QUANTITY	
TREES						
EUH	Eucalyptus haemastoma	Brood-leaved scribbly gum	15 x 6	100L	5	

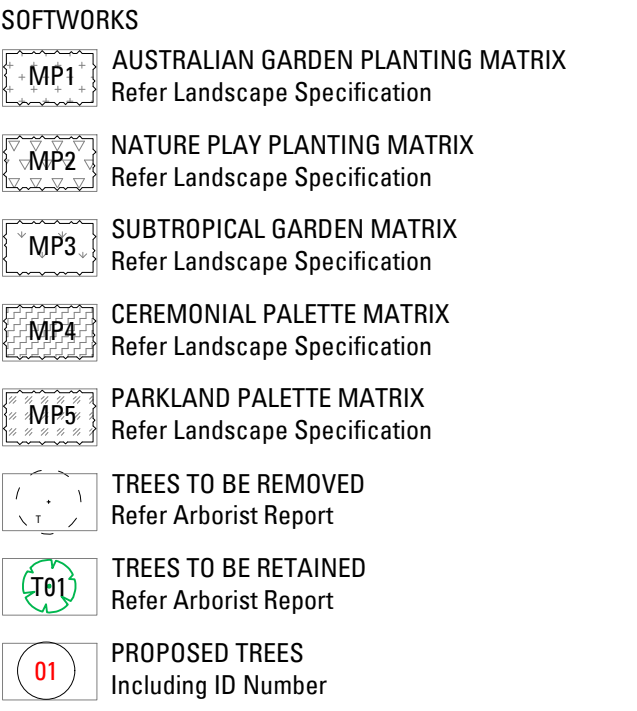


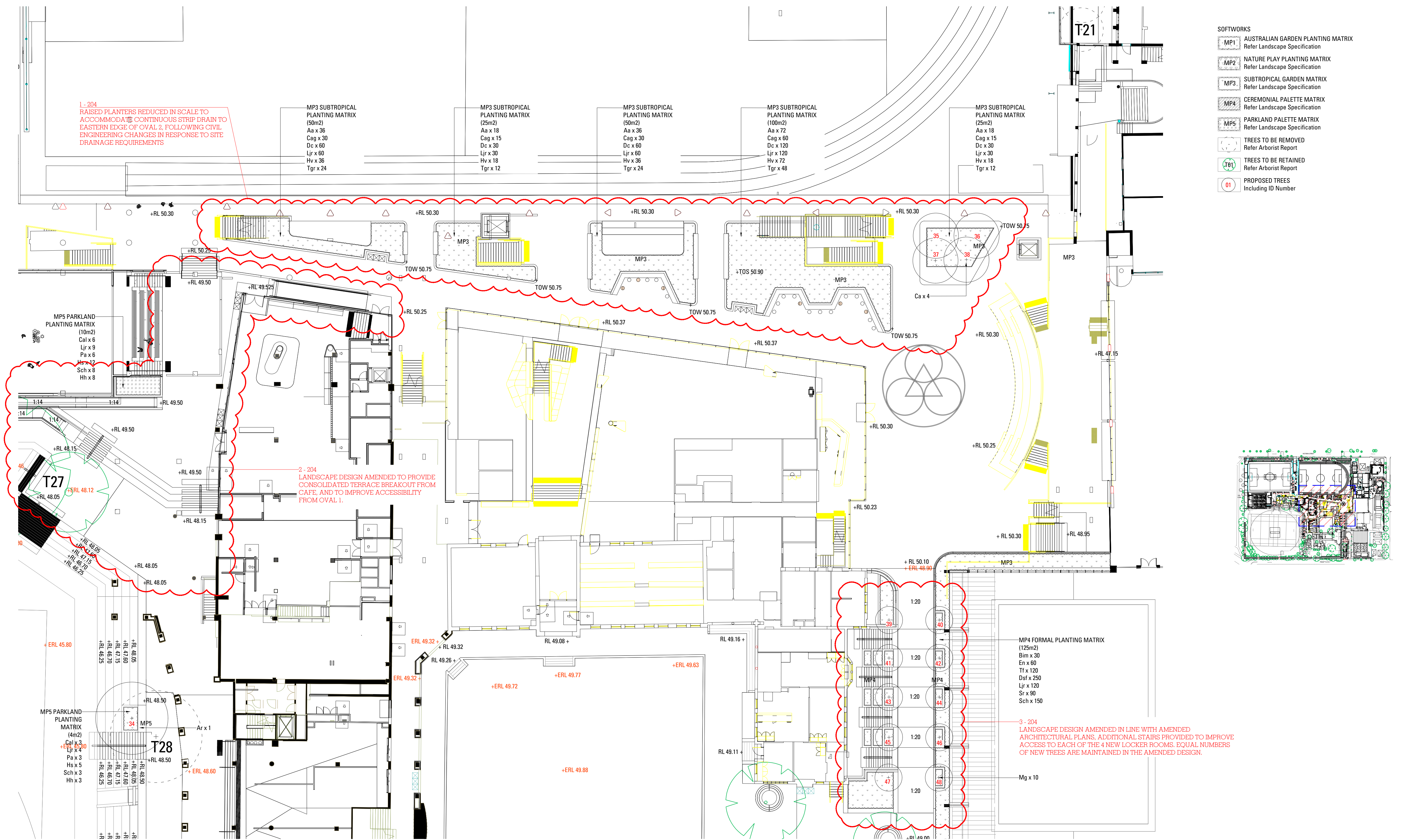


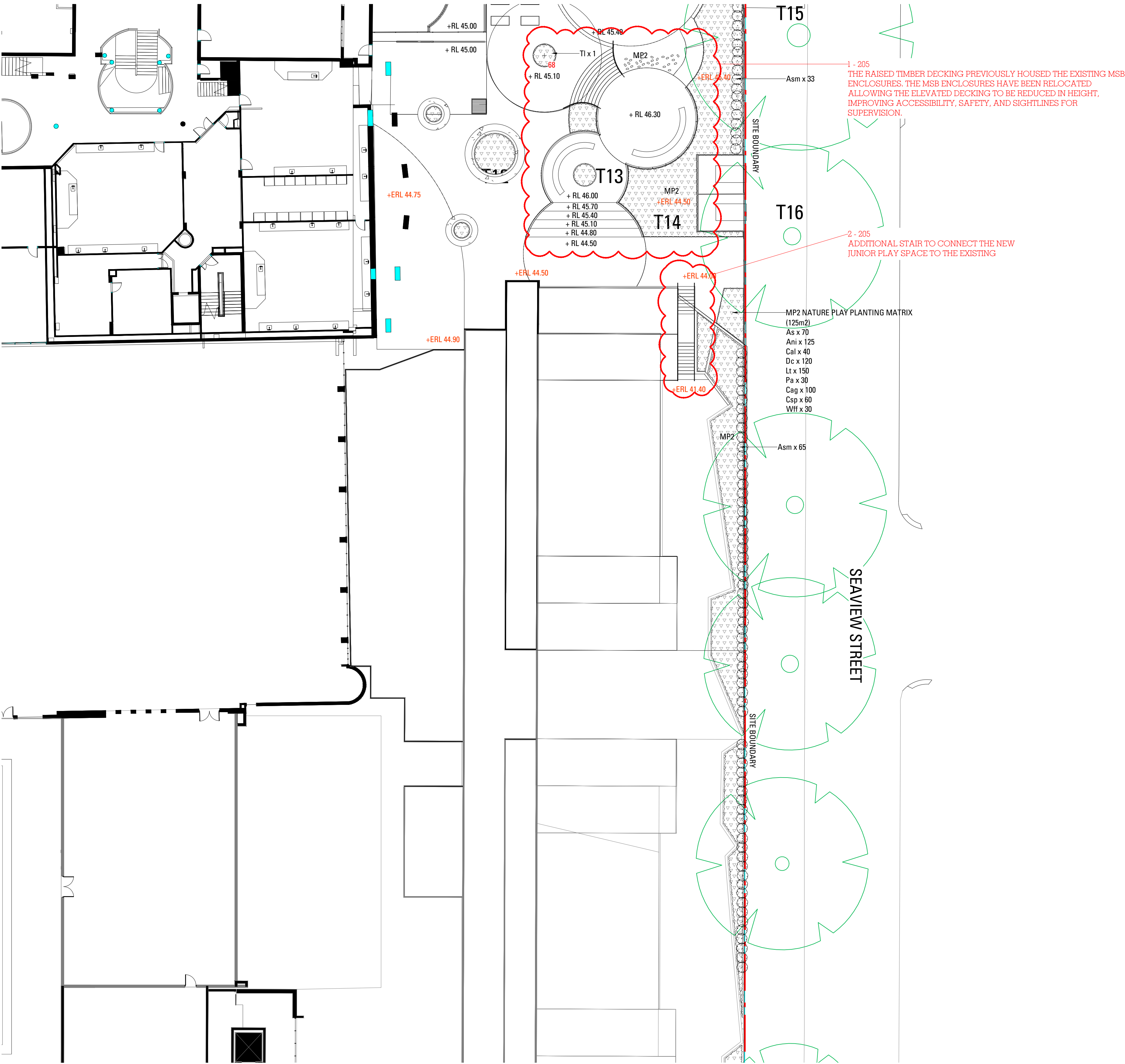




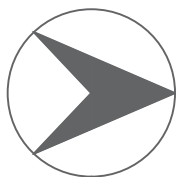
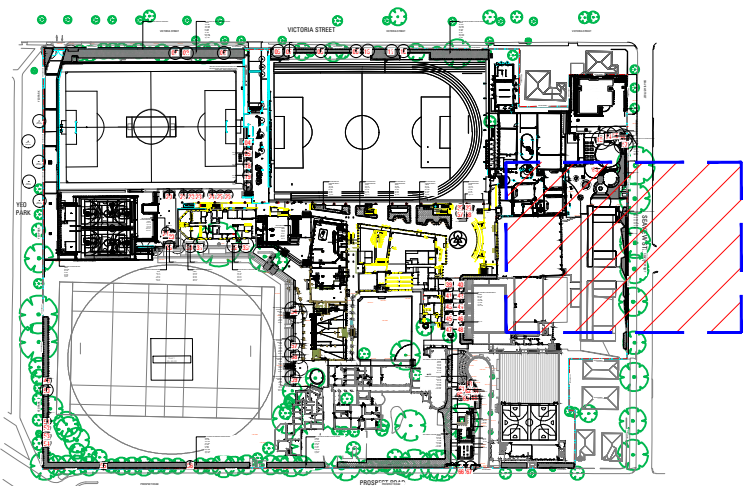


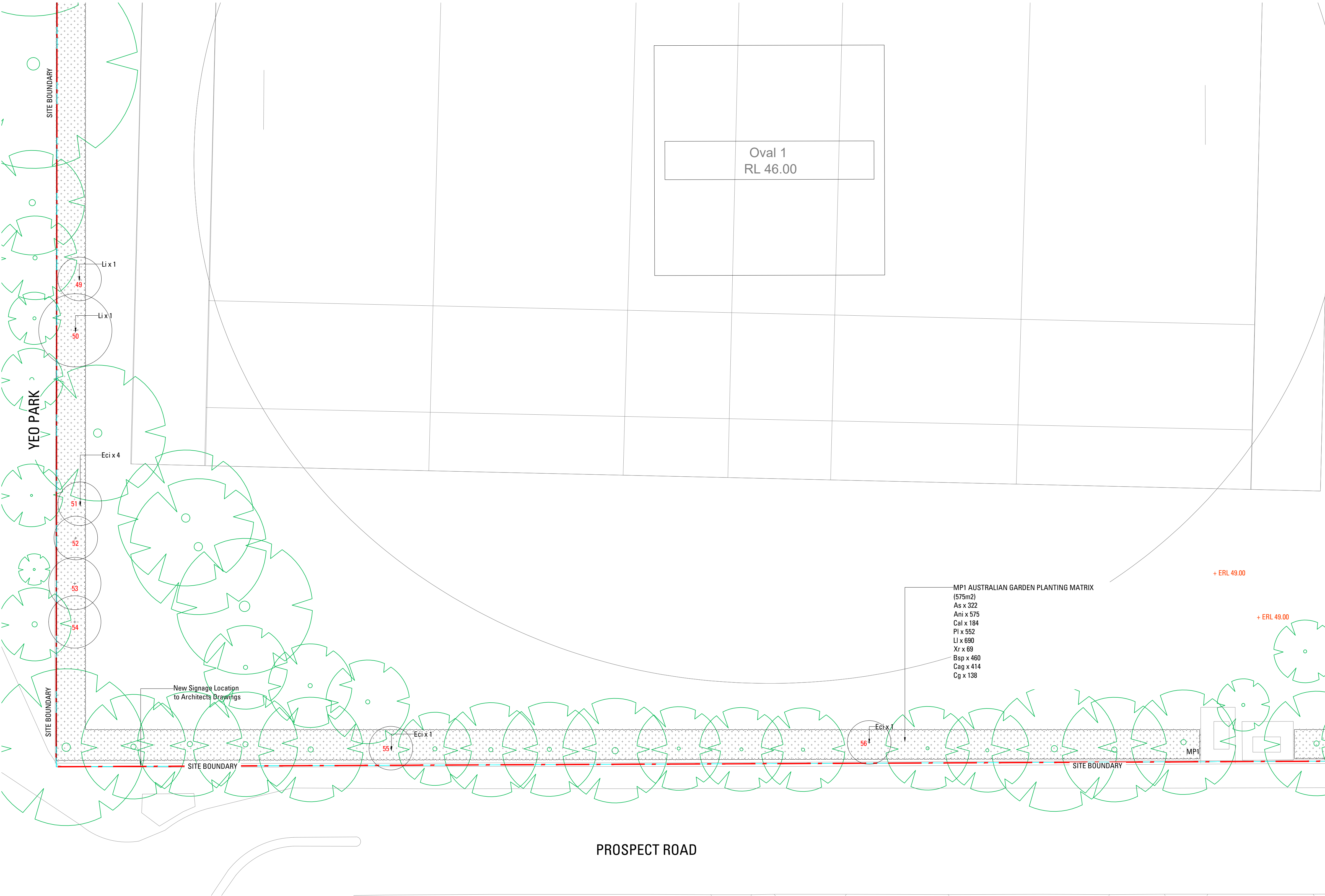






- SOFTWORKS
- MP1 AUSTRALIAN GARDEN PLANTING MATRIX
Refer Landscape Specification
 - MP2 NATURE PLAY PLANTING MATRIX
Refer Landscape Specification
 - MP3 SUBTROPICAL GARDEN MATRIX
Refer Landscape Specification
 - MP4 CEREMONIAL PALETTE MATRIX
Refer Landscape Specification
 - MP5 PARKLAND PALETTE MATRIX
Refer Landscape Specification
 - Trees to be removed
Refer Arborist Report
 - Trees to be retained
Refer Arborist Report
 - Proposed trees
Including ID Number





- SOFTWORKS
- MP1 AUSTRALIAN GARDEN PLANTING MATRIX
Refer Landscape Specification
 - MP2 NATURE PLAY PLANTING MATRIX
Refer Landscape Specification
 - MP3 SUBTROPICAL GARDEN MATRIX
Refer Landscape Specification
 - MP4 CEREMONIAL PALETTE MATRIX
Refer Landscape Specification
 - MP5 PARKLAND PALETTE MATRIX
Refer Landscape Specification
 - TREES TO BE REMOVED
Refer Arborist Report
 - TREES TO BE RETAINED
Refer Arborist Report
 - PROPOSED TREES
Including ID Number

